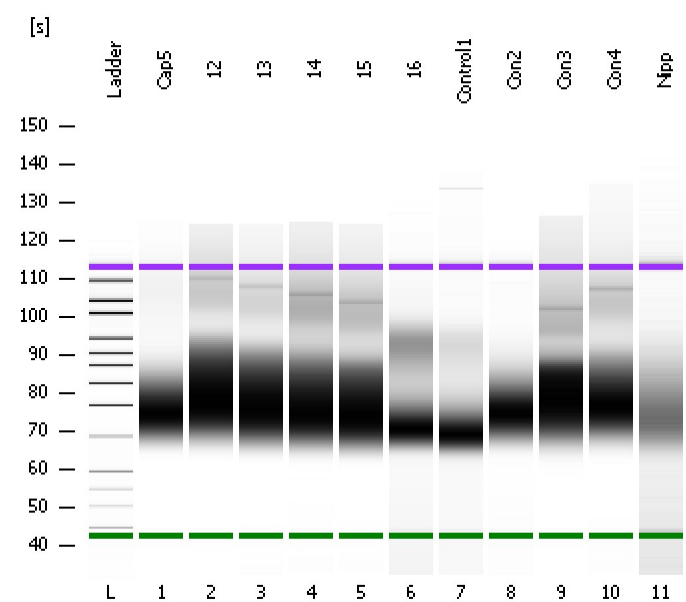


Assay Class: High Sensitivity DNA Assay  
Data Path: C:\...ents and Settings\Bioanalyzer\2012-06-04\2012-06-04\_003.xad

Created: 6/4/2012 11:57:43 AM  
Modified: 6/4/2012 12:39:03 PM

### Electrophoresis File Run Summary



#### Instrument Information:

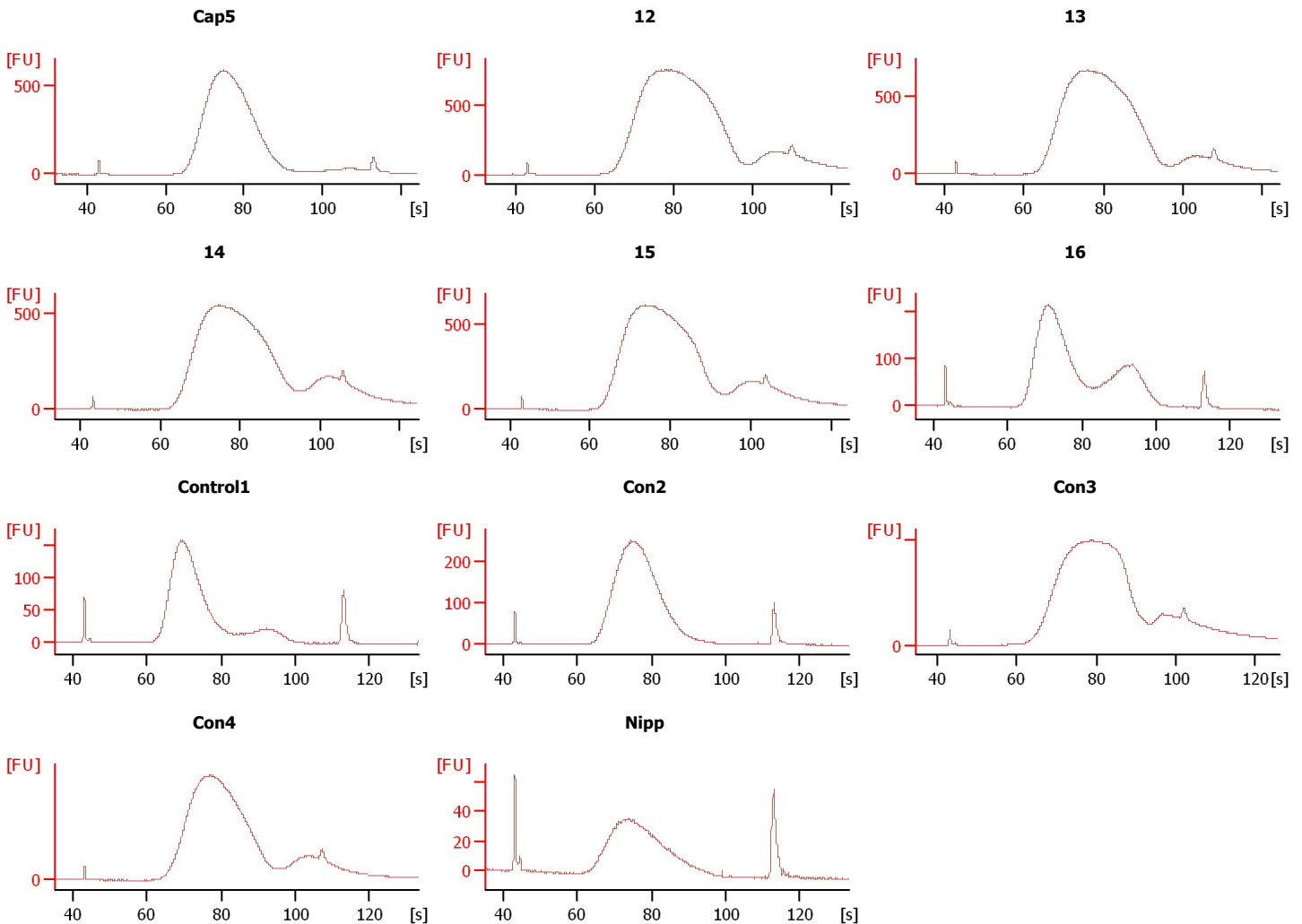
Instrument Name: DE13701086      Firmware: C.01.069  
Serial#: DE13701086      Type: G2938B

#### Assay Information:

Assay Origin Path: C:\Program Files\Agilent\2100 bioanalyzer\2100 expert\assays\dsDNA\High Sensitivity DNA.xsy  
Assay Class: High Sensitivity DNA Assay  
Version: 1.03  
Assay Comments: Copyright © 2003-2010 Agilent Technologies

#### Chip Information:

Chip Lot #:      Reagent Kit Lot #:      Chip Comments:



Assay Class: High Sensitivity DNA Assay  
 Data Path: C:\...ents and Settings\Bioanalyzer\2012-06-04\2012-06-04\_003.xad

Created: 6/4/2012 11:57:43 AM  
 Modified: 6/4/2012 12:39:03 PM

**Electrophoresis File Run Summary (Chip Summary)**

Sample Name	Sample Comment	Rest. Digest	Status	Observation	Result Label	Result Color
Cap5		<input type="checkbox"/>	✓			
12		<input type="checkbox"/>	✓			
13		<input type="checkbox"/>	✓			
14		<input type="checkbox"/>	✓			
15		<input type="checkbox"/>	✓			
16		<input type="checkbox"/>	✓			
Control1		<input type="checkbox"/>	✓			
Con2		<input type="checkbox"/>	✓			
Con3		<input type="checkbox"/>	✓			
Con4		<input type="checkbox"/>	✓			
Nipp		<input type="checkbox"/>	✓			
Ladder		<input type="checkbox"/>	✓			

**Chip Lot #**

**Reagent Kit Lot #**

**Chip Comments :**

Assay Class: High Sensitivity DNA Assay  
Data Path: C:\...ents and Settings\Bioanalyzer\2012-06-04\2012-06-04\_003.xad

Created: 6/4/2012 11:57:43 AM  
Modified: 6/4/2012 12:39:03 PM

## Electrophoresis Assay Details

### General Analysis Settings

Number of Available Sample and Ladder Wells (Max.) : 12  
Minimum Visible Range [s] : 32  
Maximum Visible Range [s] : 138  
Start Analysis Time Range [s] : 33  
End Analysis Time Range [s] : 137.5  
Ladder Concentration [pg/ $\mu$ l] : 1950  
Uses Standard Area for Ladder Fragments  
Lower Marker Concentration [pg/ $\mu$ l] : 125  
Upper Marker Concentration [pg/ $\mu$ l] : 75  
Used Upper Marker for Quantitation  
Standard Curve Fit is Point to Point  
Show Data Aligned to Lower and Upper Marker

### Integrator Settings

Integration Start Time [s] : 33.05  
Integration End Time [s] : 137  
Slope Threshold : 0.8  
Height Threshold [FU] : 5  
Area Threshold : 0.1  
Width Threshold [s] : 0.6  
Baseline Plateau [s] : 0.5

### Filter Settings

Filter Width [s] : 0.5  
Polynomial Order : 4

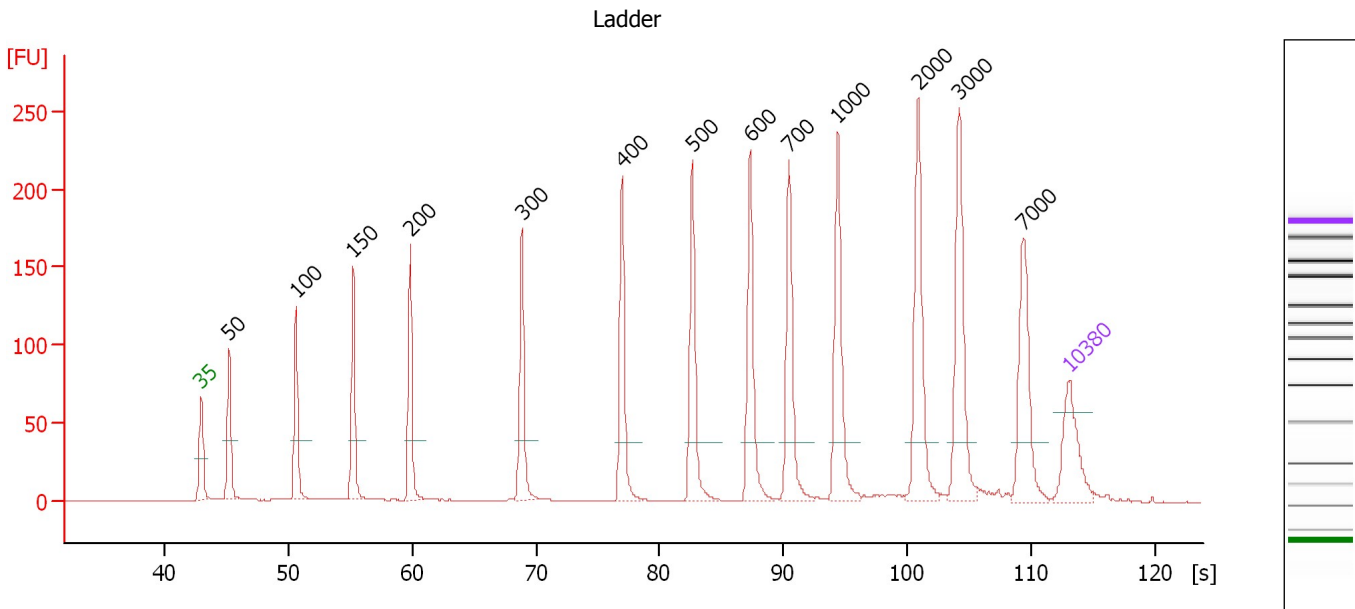
### Ladder

Ladder Peak	Size	Area
1	35	160
2	50	210
3	100	208
4	150	221
5	200	242
6	300	270
7	400	305
8	500	306
9	600	336
10	700	321
11	1000	366
12	2000	413
13	3000	411
14	7000	400
15	10380	214

Assay Class: High Sensitivity DNA Assay  
 Data Path: C:\...ents and Settings\Bioanalyzer\2012-06-04\2012-06-04\_003.xad

Created: 6/4/2012 11:57:43 AM  
 Modified: 6/4/2012 12:39:03 PM

**Electropherogram Summary**



**Overall Results for Ladder**

Noise: 0.2

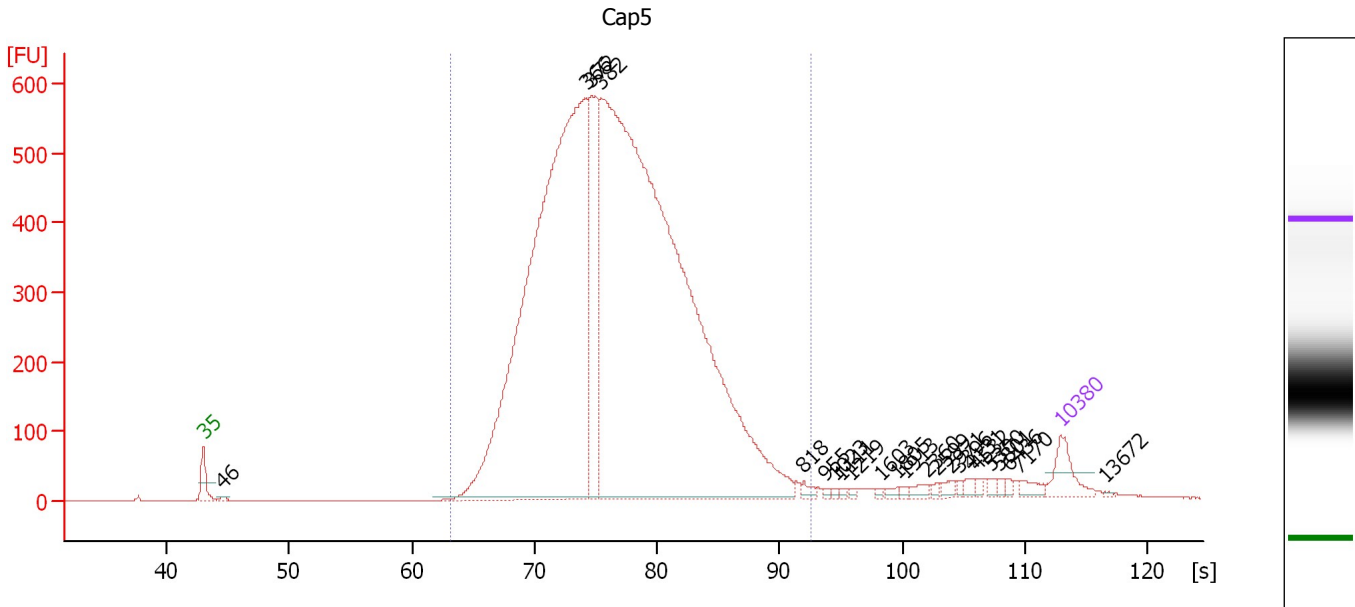
**Peak table for Ladder**

Peak	Size [bp]	Conc. [pg/μl]	Molarity [pmol/l]	Observations
1	35	125.00	5,411.3	Lower Marker
2	50	150.00	4,545.5	Ladder Peak
3	100	150.00	2,272.7	Ladder Peak
4	150	150.00	1,515.2	Ladder Peak
5	200	150.00	1,136.4	Ladder Peak
6	300	150.00	757.6	Ladder Peak
7	400	150.00	568.2	Ladder Peak
8	500	150.00	454.5	Ladder Peak
9	600	150.00	378.8	Ladder Peak
10	700	150.00	324.7	Ladder Peak
11	1,000	150.00	227.3	Ladder Peak
12	2,000	150.00	113.6	Ladder Peak
13	3,000	150.00	75.8	Ladder Peak
14	7,000	150.00	32.5	Ladder Peak
15	10,380	75.00	10.9	Upper Marker

Assay Class: High Sensitivity DNA Assay  
 Data Path: C:\...ents and Settings\Bioanalyzer\2012-06-04\2012-06-04\_003.xad

Created: 6/4/2012 11:57:43 AM  
 Modified: 6/4/2012 12:39:03 PM

**Electropherogram Summary Continued ...**



**Overall Results for sample 1 : Cap5**

Number of peaks found: 23                      Corr. Area 1: 11,242.5  
 Noise: 0.2

**Peak table for sample 1 : Cap5**

Peak	Size [bp]	Conc. [pg/μl]	Molarity [pmol/l]	Observations
1	35	125.00	5,411.3	Lower Marker
2	46	10.67	353.0	
3	366	3,452.87	14,297.9	
4	372	556.11	2,265.8	
5	382	4,852.68	19,264.7	
6	818	18.19	33.7	
7	955	7.51	11.9	
8	1,023	5.47	8.1	
9	1,111	6.58	9.0	
10	1,219	5.64	7.0	
11	1,603	5.35	5.1	
12	1,805	9.97	8.4	
13	1,913	7.02	5.6	
14	2,360	17.01	10.9	
15	2,599	8.01	4.7	
16	2,971	15.17	7.7	
17	3,396	7.93	3.5	
18	4,131	12.86	4.7	
19	4,532	8.56	2.9	
20	5,300	11.24	3.2	
21	5,801	9.57	2.5	
22	6,436	8.75	2.1	
23	7,170	25.20	5.3	
24	10,380	75.00	10.9	Upper Marker
25	13,672	0.00	0.0	

Assay Class: High Sensitivity DNA Assay  
Data Path: C:\...ents and Settings\Bioanalyzer\2012-06-04\2012-06-04\_003.xad

Created: 6/4/2012 11:57:43 AM  
Modified: 6/4/2012 12:39:03 PM

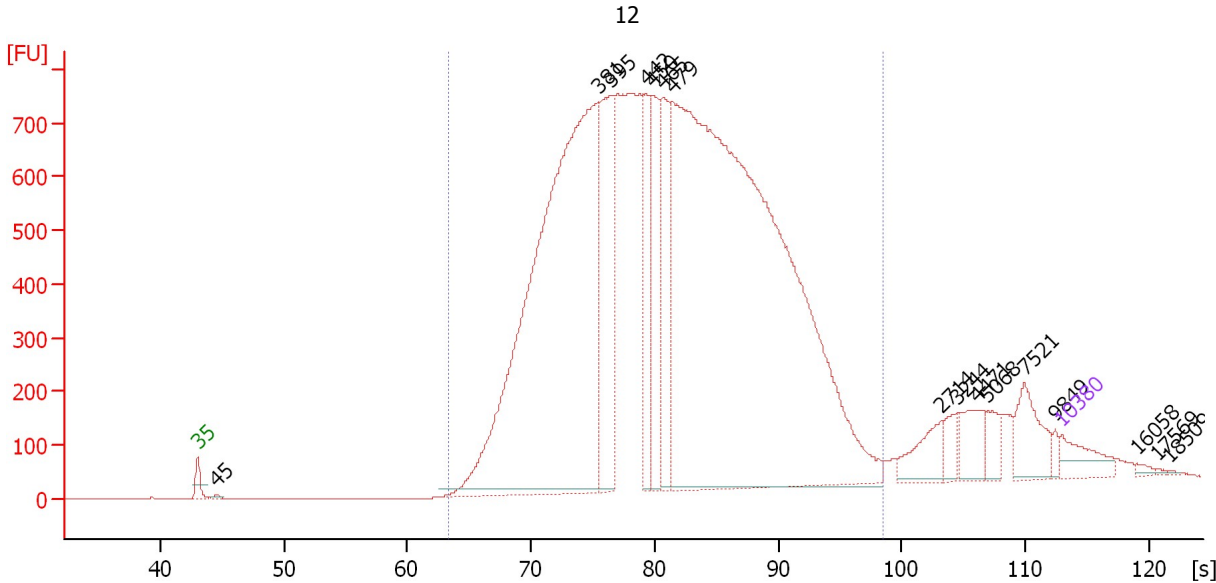
**Electropherogram Summary Continued ...****... Region table for sample 1 : Cap5**

<b>From [s]</b>	<b>To [s]</b>	<b>Average Size [bp]</b>	<b>Molarity [pmol/l]</b>	<b>Conc. [pg/μl]</b>	<b>Corr. Area % of Total</b>	<b>Size distribution in CV [%]</b>	<b>Co lor</b>
63.18	92.54	408	34,348.3	8,736.16	11,242.5	96	21.3

Assay Class: High Sensitivity DNA Assay  
 Data Path: C:\...ents and Settings\Bioanalyzer\2012-06-04\2012-06-04\_003.xad

Created: 6/4/2012 11:57:43 AM  
 Modified: 6/4/2012 12:39:03 PM

**Electropherogram Summary Continued ...**



**Overall Results for sample 2 : 12**

Number of peaks found: 16                      Corr. Area 1: 20,761.8  
 Noise: 0.3

**Peak table for sample 2 : 12**

Peak	Size [bp]	Conc. [pg/μl]	Molarity [pmol/l]	Observations
1	35	125.00	5,411.3	Lower Marker
2	45	8.13	272.9	
3	381	2,937.13	11,669.5	
4	395	608.05	2,333.3	
5	442	282.15	967.9	
6	450	377.78	1,271.7	
7	465	350.65	1,141.6	
8	479	4,520.06	14,291.8	
9	2,714	100.18	55.9	
10	3,244	51.76	24.2	
11	4,471	94.54	32.0	
12	5,068	53.49	16.0	
13	7,521	133.96	27.0	
14	9,849	16.11	2.5	
15	10,380	75.00	10.9	Upper Marker
16	16,058	0.00	0.0	
17	17,569	0.00	0.0	
18	18,509	0.00	0.0	

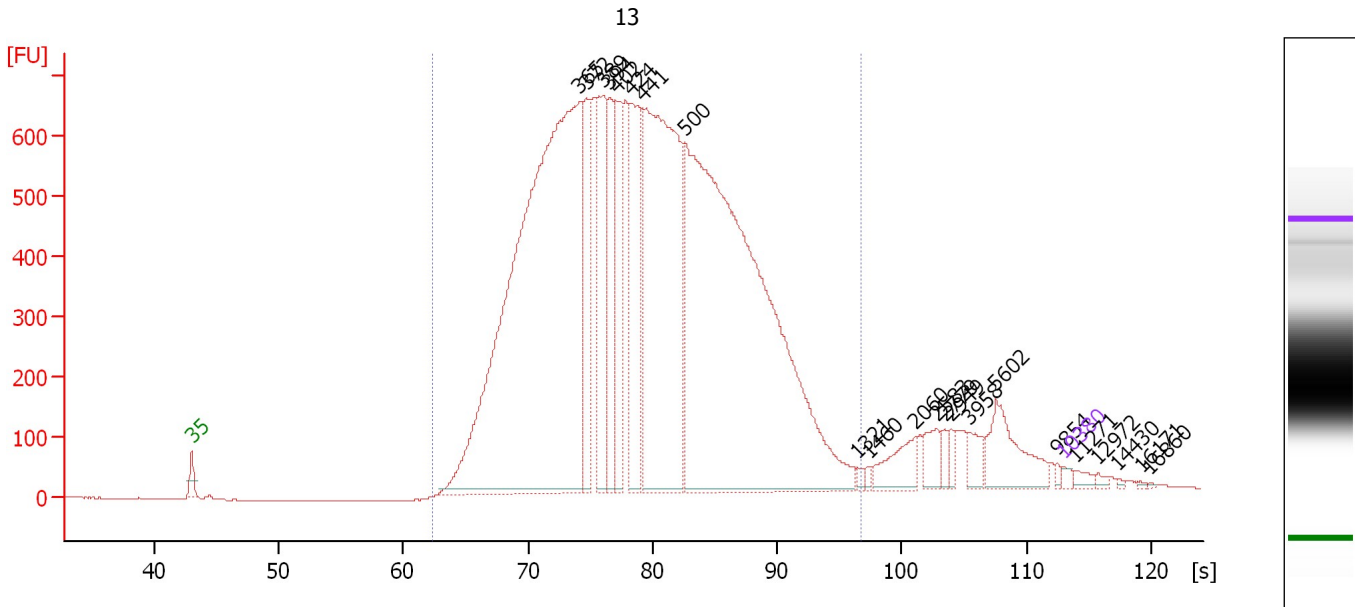
**Region table for sample 2 : 12**

From [s]	To [s]	Average Size [bp]	Molarity [pmol/l]	Conc. [pg/μl]	Corr. Area % of Total	Size distribution in CV [%]	Color
63.35	98.55	507	33,552.6	9,757.31	20,761.8	93	37.1

Assay Class: High Sensitivity DNA Assay  
 Data Path: C:\...ents and Settings\Bioanalyzer\2012-06-04\2012-06-04\_003.xad

Created: 6/4/2012 11:57:43 AM  
 Modified: 6/4/2012 12:39:03 PM

**Electropherogram Summary Continued ...**



**Overall Results for sample 3 : 13**

Number of peaks found: 22                      Corr. Area 1: 18,310.5  
 Noise: 0.8

**Peak table for sample 3 : 13**

Peak	Size [bp]	Conc. [pg/μl]	Molarity [pmol/l]	Observations
1	35	125.00	5,411.3	Lower Marker
2	365	22,455.16	93,200.0	
3	372	2,014.69	8,205.7	
4	389	2,852.45	11,122.3	
5	394	2,356.36	9,051.0	
6	402	1,875.19	7,067.6	
7	424	3,223.69	11,519.3	
8	441	9,629.69	33,049.2	
9	500	19,911.81	60,347.3	
10	1,321	72.62	83.3	
11	1,460	68.61	71.2	
12	2,060	638.46	469.7	
13	2,583	395.61	232.1	
14	2,779	166.35	90.7	
15	2,949	165.98	85.3	
16	3,958	335.63	128.5	
17	5,602	1,135.35	307.1	
18	9,854	59.35	9.1	
19	10,380	75.00	10.9	Upper Marker
20	11,271	0.00	0.0	
21	12,972	0.00	0.0	
22	14,430	0.00	0.0	
23	16,171	0.00	0.0	
24	16,860	0.00	0.0	



Assay Class: High Sensitivity DNA Assay  
Data Path: C:\...ents and Settings\Bioanalyzer\2012-06-04\2012-06-04\_003.xad

Created: 6/4/2012 11:57:43 AM  
Modified: 6/4/2012 12:39:03 PM

**Electropherogram Summary Continued ...**

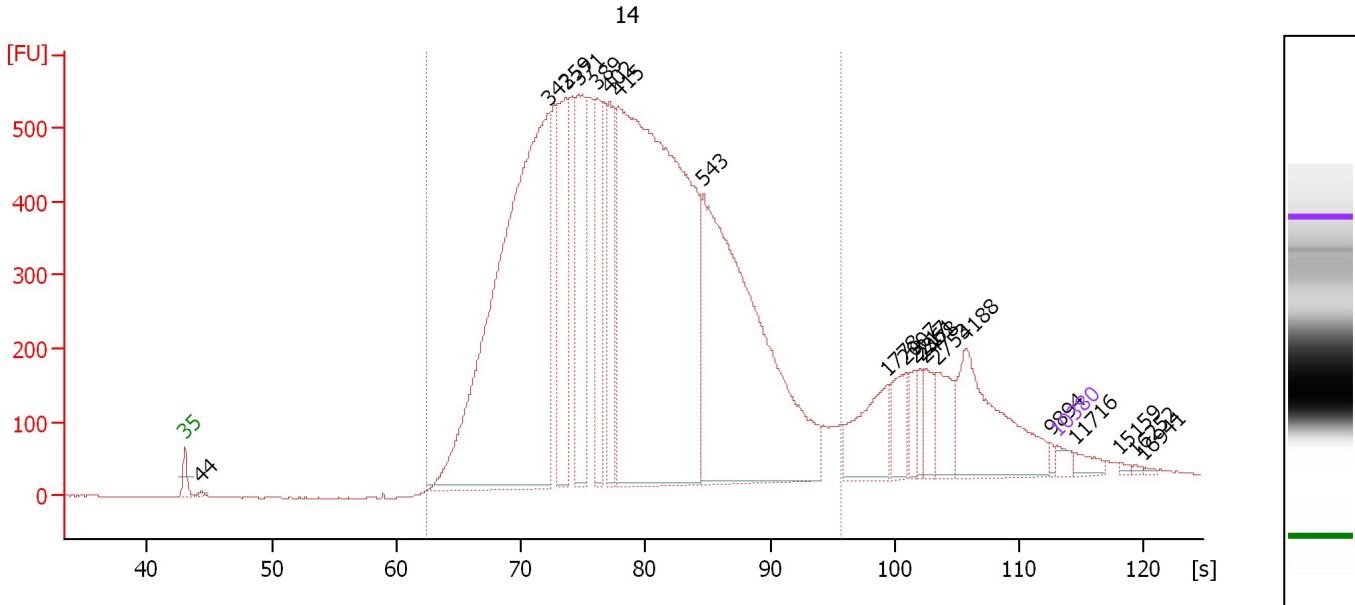
... Region table for sample 3 : 13

From [s]	To [s]	Average Size [bp]	Molarity [pmol/l]	Conc. [pg/μl]	Corr. Area % of Total	Size distribution in CV [%]	Color
62.38	96.80	460	254,894.6	68,938.77	18,310.5 93	31.8	

Assay Class: High Sensitivity DNA Assay  
 Data Path: C:\...ents and Settings\Bioanalyzer\2012-06-04\2012-06-04\_003.xad

Created: 6/4/2012 11:57:43 AM  
 Modified: 6/4/2012 12:39:03 PM

**Electropherogram Summary Continued ...**



**Overall Results for sample 4 : 14**

Number of peaks found: 20                      Corr. Area 1: 14,696.7  
 Noise: 0.7

**Peak table for sample 4 : 14**

Peak	Size [bp]	Conc. [pg/μl]	Molarity [pmol/l]	Observations
1	35	125.00	5,411.3	Lower Marker
2	44	23.41	808.0	
3	342	8,959.80	39,749.1	
4	359	1,656.95	7,000.2	
5	371	1,625.97	6,632.0	
6	389	1,176.02	4,579.3	
7	402	1,128.99	4,255.2	
8	415	9,826.83	35,885.5	
9	543	5,759.08	16,064.1	
10	1,778	684.91	583.6	
11	2,007	346.13	261.3	
12	2,217	142.46	97.4	
13	2,361	144.64	92.8	
14	2,478	239.63	146.5	
15	2,753	359.65	197.9	
16	4,188	1,203.63	435.5	
17	9,894	40.61	6.2	
18	10,380	75.00	10.9	Upper Marker
19	11,716	0.00	0.0	
20	15,159	0.00	0.0	
21	16,252	0.00	0.0	
22	16,941	0.00	0.0	

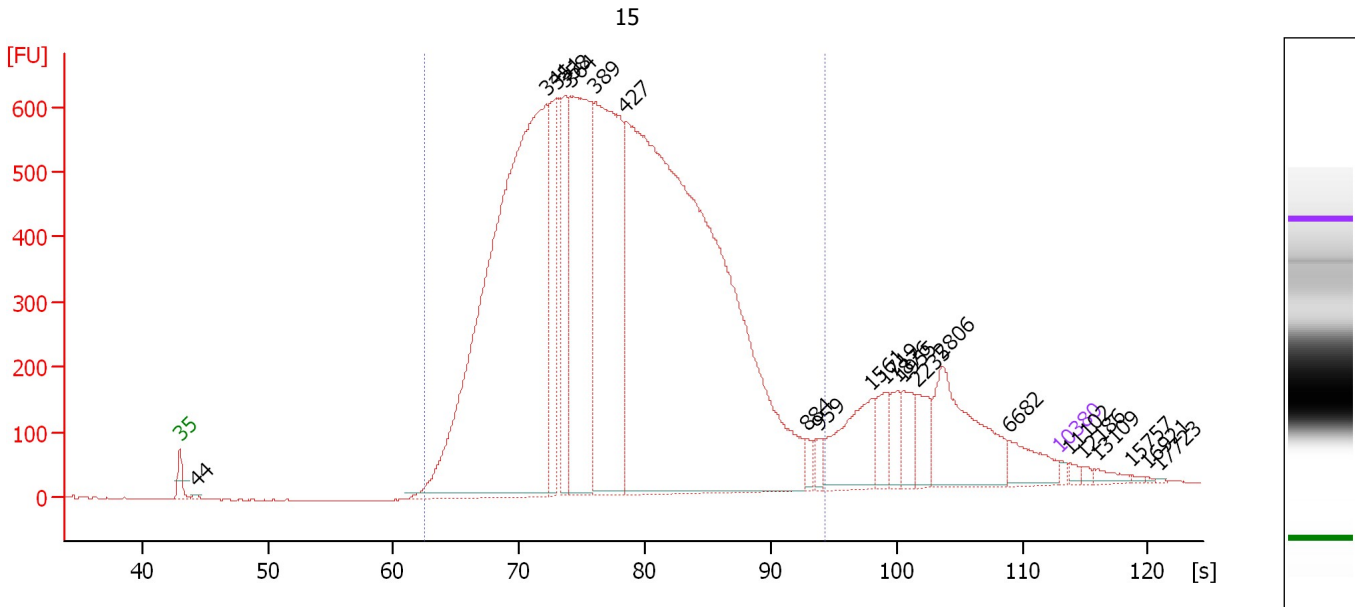
**Region table for sample 4 : 14**

From [s]	To [s]	Average Size [bp]	Molarity [pmol/l]	Conc. [pg/μl]	Corr. Area % of Total	Size distribution in CV [%]	Color	
62.47	95.63	449	127,756.1	33,757.12	14,696.7	88	31.9	Blue

Assay Class: High Sensitivity DNA Assay  
 Data Path: C:\...ents and Settings\Bioanalyzer\2012-06-04\2012-06-04\_003.xad

Created: 6/4/2012 11:57:43 AM  
 Modified: 6/4/2012 12:39:03 PM

**Electropherogram Summary Continued ...**



**Overall Results for sample 5 : 15**

Number of peaks found: 22                      Corr. Area 1: 16,801.1  
 Noise: 0.8

**Peak table for sample 5 : 15**

Peak	Size [bp]	Conc. [pg/μl]	Molarity [pmol/l]	Observations
1	35	125.00	5,411.3	Lower Marker
2	44	81.53	2,838.2	
3	341	26,113.21	116,075.4	
4	351	3,454.17	14,913.7	
5	358	2,821.53	11,930.1	
6	364	8,888.10	36,979.5	
7	389	10,456.60	40,721.2	
8	427	34,218.35	121,532.9	
9	884	264.80	453.7	
10	959	254.18	401.6	
11	1,561	1,832.21	1,778.5	
12	1,719	699.19	616.4	
13	1,876	524.04	423.2	
14	1,955	612.03	474.3	
15	2,235	738.38	500.5	
16	2,806	2,625.97	1,418.0	
17	6,682	790.68	179.3	
18	10,380	75.00	10.9	Upper Marker
19	11,102	0.00	0.0	
20	12,186	0.00	0.0	
21	13,109	0.00	0.0	
22	15,757	0.00	0.0	
23	16,921	0.00	0.0	
24	17,723	0.00	0.0	

Assay Class: High Sensitivity DNA Assay  
Data Path: C:\...ents and Settings\Bioanalyzer\2012-06-04\2012-06-04\_003.xad

Created: 6/4/2012 11:57:43 AM  
Modified: 6/4/2012 12:39:03 PM

**Electropherogram Summary Continued ...**

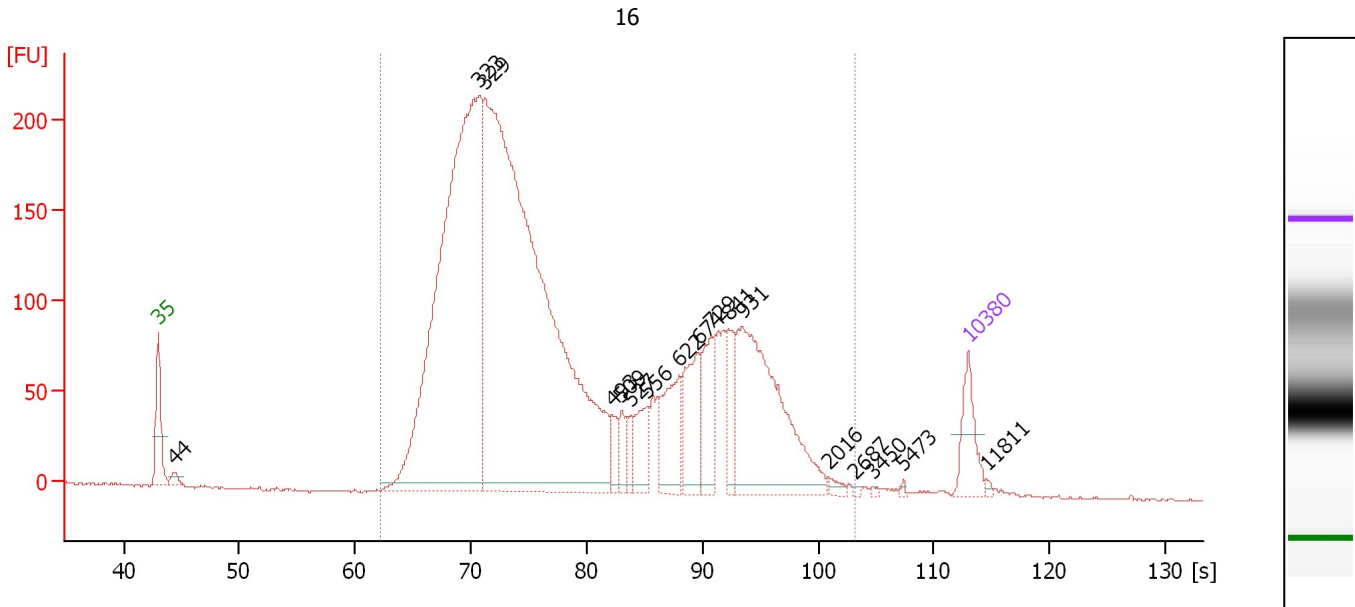
... Region table for sample 5 : 15

From [s]	To [s]	Average Size [bp]	Molarity [pmol/l]	Conc. [pg/μl]	Corr. Area % of Total	Size distribution in CV [%]	Color
62.52	94.36	428	333,853.5	85,231.78	16,801.1 89	28.6	■

Assay Class: High Sensitivity DNA Assay  
 Data Path: C:\...ents and Settings\Bioanalyzer\2012-06-04\2012-06-04\_003.xad

Created: 6/4/2012 11:57:43 AM  
 Modified: 6/4/2012 12:39:03 PM

**Electropherogram Summary Continued ...**



**Overall Results for sample 6 : 16**

Number of peaks found: 17                      Corr. Area 1: 4,310.7  
 Noise: 0.6

**Peak table for sample 6 : 16**

Peak	Size [bp]	Conc. [pg/μl]	Molarity [pmol/l]	Observations
1	35	125.00	5,411.3	Lower Marker
2	44	21.97	748.4	
3	323	1,711.16	8,034.6	
4	329	2,388.27	10,985.7	
5	493	42.68	131.2	
6	509	42.42	126.3	
7	527	37.87	108.9	
8	556	84.00	228.8	
9	622	142.01	345.7	
10	674	148.51	333.7	
11	729	117.26	243.8	
12	841	77.65	139.9	
13	931	463.93	755.4	
14	2,016	10.67	8.0	
15	2,687	2.79	1.6	
16	3,450	3.14	1.4	
17	5,473	3.08	0.9	
18	10,380	75.00	10.9	Upper Marker
19	11,811	0.00	0.0	

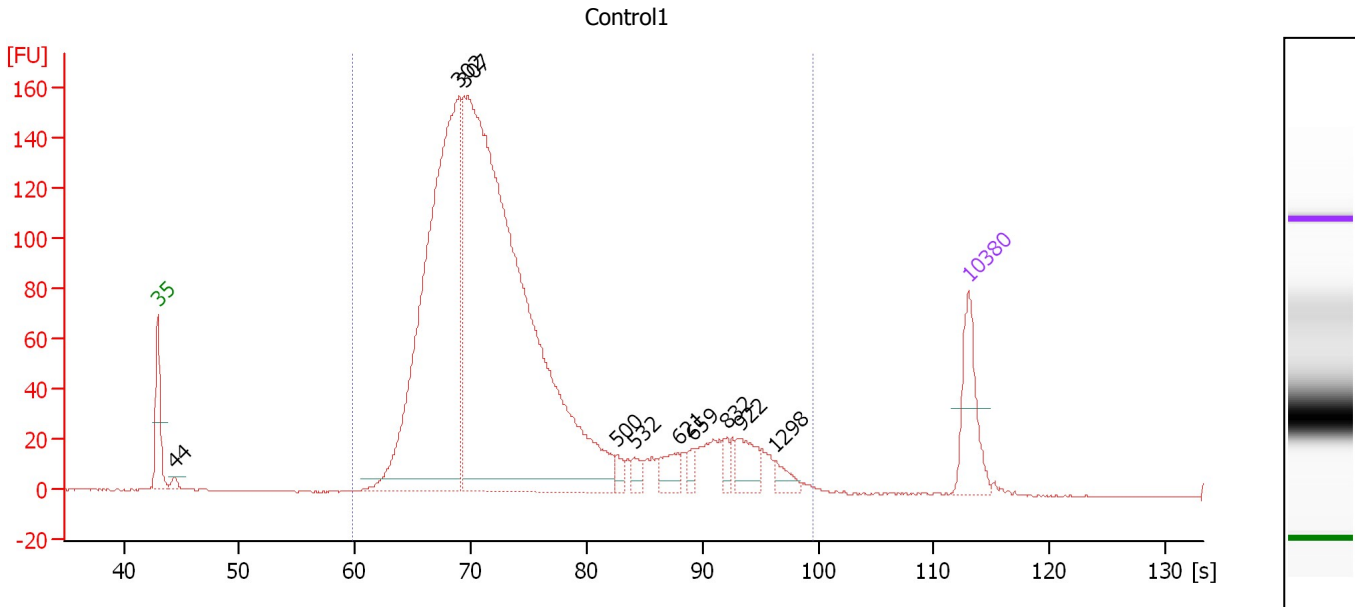
**Region table for sample 6 : 16**

From [s]	To [s]	Average Size [bp]	Molarity [pmol/l]	Conc. [pg/μl]	Corr. Area	% of Total	Size distribution in CV [%]	Color
62.24	103.27	527	20,340.4	5,233.11	4,310.7	99	63.6	■

Assay Class: High Sensitivity DNA Assay  
 Data Path: C:\...ents and Settings\Bioanalyzer\2012-06-04\2012-06-04\_003.xad

Created: 6/4/2012 11:57:43 AM  
 Modified: 6/4/2012 12:39:03 PM

**Electropherogram Summary Continued ...**



**Overall Results for sample 7 : Control1**

Number of peaks found: 10      Corr. Area 1: 2,498.1  
 Noise: 0.2

**Peak table for sample 7 : Control1**

Peak	Size [bp]	Conc. [pg/μl]	Molarity [pmol/l]	Observations
1	35	125.00	5,411.3	Lower Marker
2	44	12.70	435.4	
3	302	959.00	4,812.0	
4	307	1,635.56	8,075.8	
5	500	14.16	42.9	
6	532	15.24	43.4	
7	621	30.40	74.2	
8	659	15.15	34.8	
9	832	14.39	26.2	
10	922	41.95	68.9	
11	1,298	18.08	21.1	
12	10,380	75.00	10.9	Upper Marker

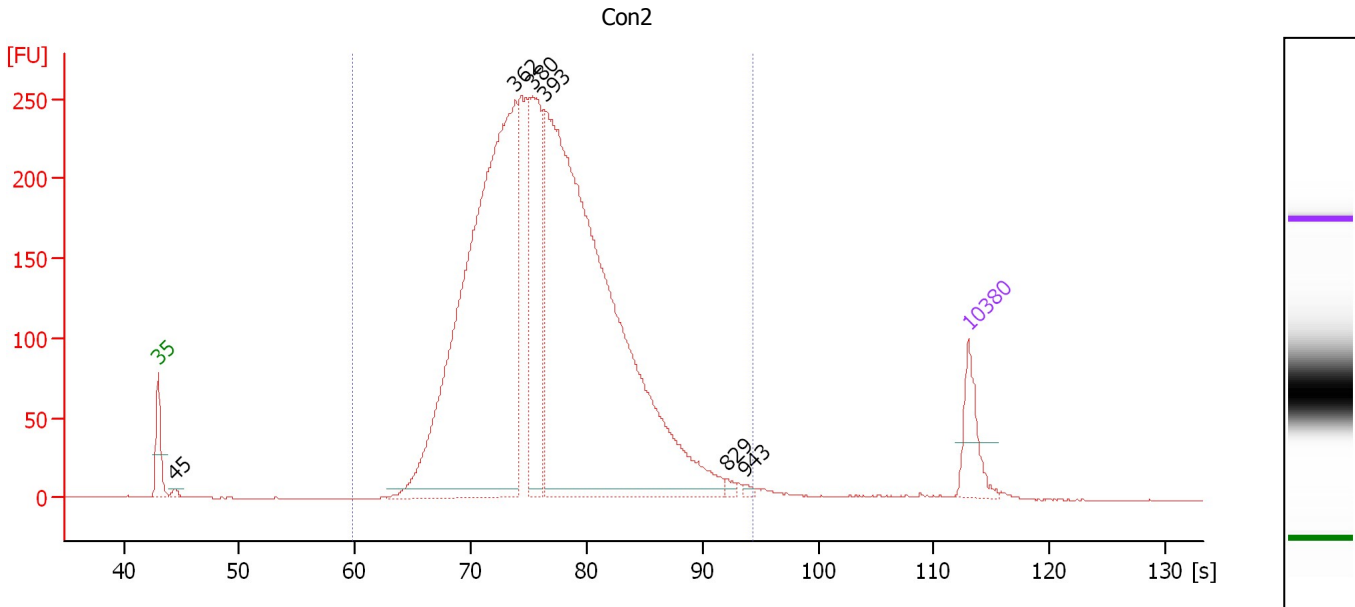
**Region table for sample 7 : Control1**

From [s]	To [s]	Average Size [bp]	Molarity [pmol/l]	Conc. [pg/μl]	Corr. Area % of Total	Size distribution in CV [%]	Color
59.86	99.55	401	12,712.7	2,831.14	2,498.1 99	52.8	Blue

Assay Class: High Sensitivity DNA Assay  
 Data Path: C:\...ents and Settings\Bioanalyzer\2012-06-04\2012-06-04\_003.xad

Created: 6/4/2012 11:57:43 AM  
 Modified: 6/4/2012 12:39:03 PM

**Electropherogram Summary Continued ...**



**Overall Results for sample 8 : Con2**

Number of peaks found: 6                      Corr. Area 1: 4,633.1  
 Noise: 0.1

**Peak table for sample 8 : Con2**

Peak	Size [bp]	Conc. [pg/μl]	Molarity [pmol/l]	Observations
1	35	125.00	5,411.3	Lower Marker
2	45	11.12	377.7	
3	362	1,667.13	6,978.0	
4	380	347.22	1,384.9	
5	393	1,997.59	7,704.9	
6	829	9.24	16.9	
7	943	5.49	8.8	
8	10,380	75.00	10.9	Upper Marker

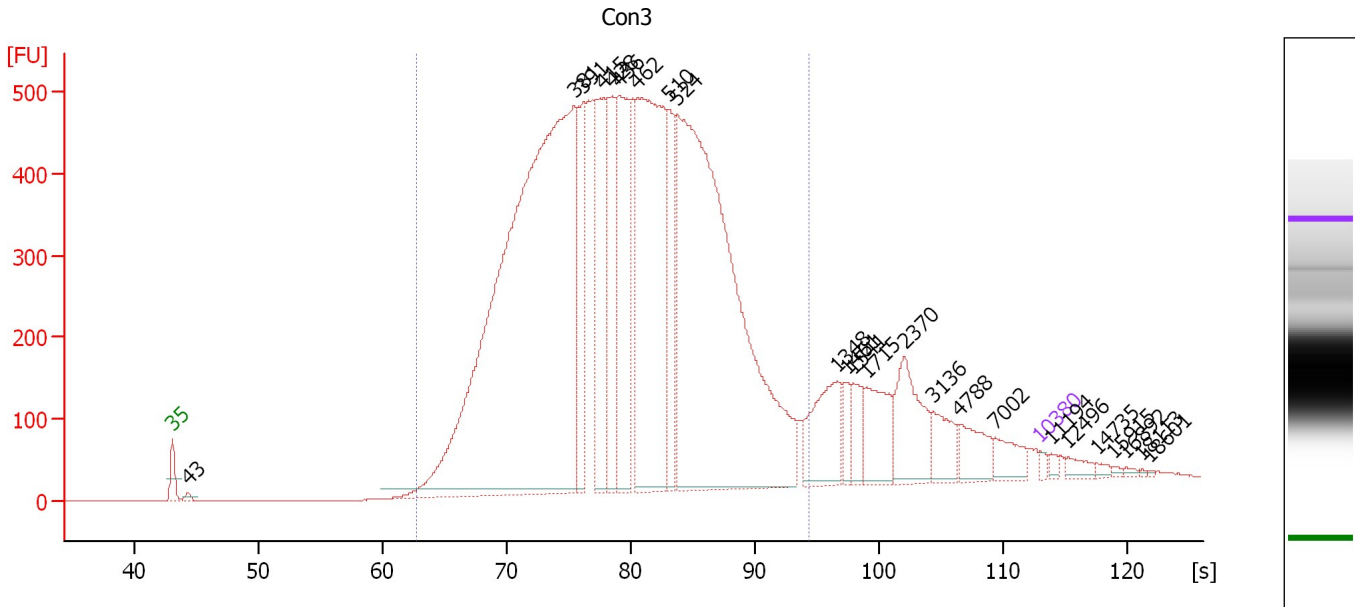
**Region table for sample 8 : Con2**

From [s]	To [s]	Average Size [bp]	Molarity [pmol/l]	Conc. [pg/μl]	Corr. Area % of Total	Size distribution in CV [%]	Color
59.86	94.36	409	17,478.1	4,430.44	98	23.5	Blue

Assay Class: High Sensitivity DNA Assay  
 Data Path: C:\...ents and Settings\Bioanalyzer\2012-06-04\2012-06-04\_003.xad

Created: 6/4/2012 11:57:43 AM  
 Modified: 6/4/2012 12:39:03 PM

**Electropherogram Summary Continued ...**



**Overall Results for sample 9 : Con3**

Number of peaks found: 24                      Corr. Area 1: 13,311.5  
 Noise: 0.2

**Peak table for sample 9 : Con3**

Peak	Size [bp]	Conc. [pg/μl]	Molarity [pmol/l]	Observations
1	35	125.00	5,411.3	Lower Marker
2	43	114.92	4,015.5	
3	381	25,302.34	100,639.1	
4	391	2,333.47	9,051.5	
5	415	3,203.75	11,699.9	
6	428	2,419.63	8,568.5	
7	436	3,897.65	13,537.1	
8	462	8,528.28	27,957.6	
9	510	2,018.95	6,002.1	
10	524	16,672.11	48,165.2	
11	1,348	1,586.13	1,782.5	
12	1,461	343.68	356.3	
13	1,541	589.07	579.0	
14	1,715	1,126.50	995.4	
15	2,370	1,440.72	920.9	
16	3,136	648.31	313.2	
17	4,788	668.44	211.5	
18	7,002	483.67	104.7	
19	10,380	75.00	10.9	Upper Marker
20	11,194	0.00	0.0	
21	12,496	0.00	0.0	
22	14,735	0.00	0.0	
23	15,915	0.00	0.0	
24	16,892	0.00	0.0	
25	18,113	0.00	0.0	
26	18,601	0.00	0.0	



Assay Class: High Sensitivity DNA Assay  
Data Path: C:\...ents and Settings\Bioanalyzer\2012-06-04\2012-06-04\_003.xad

Created: 6/4/2012 11:57:43 AM  
Modified: 6/4/2012 12:39:03 PM

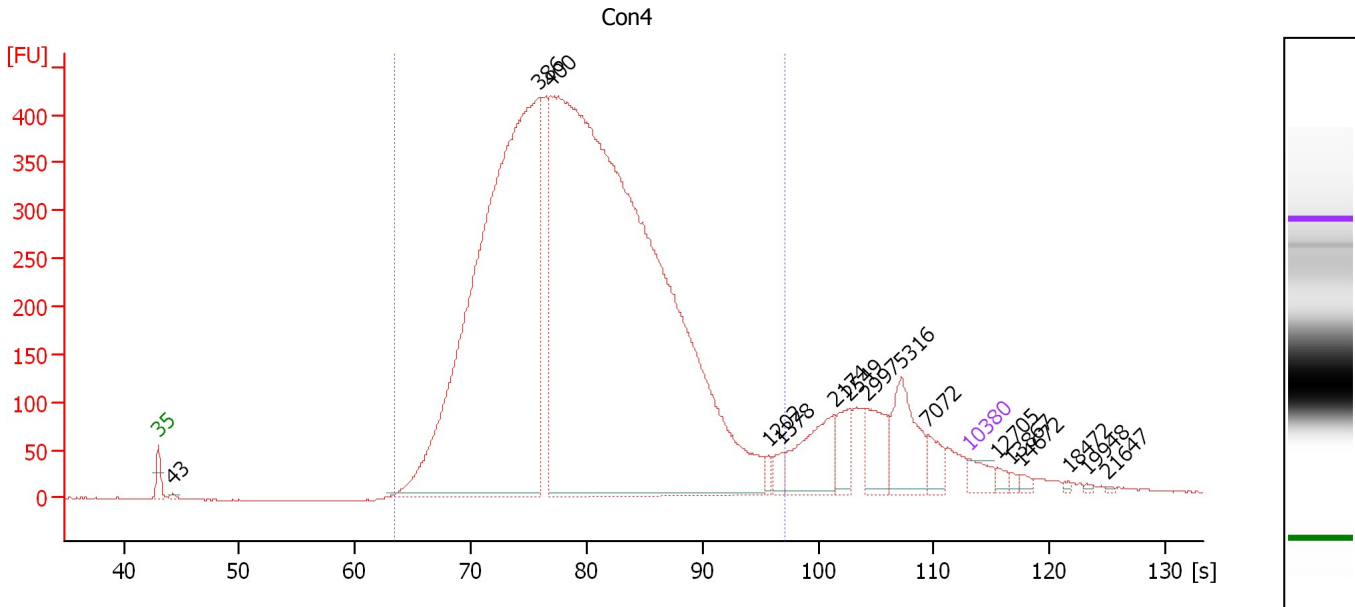
**Electropherogram Summary Continued ...****... Region table for sample 9 :      Con3**

<b>From [s]</b>	<b>To [s]</b>	<b>Average Size [bp]</b>	<b>Molarity [pmol/l]</b>	<b>Conc. [pg/μl]</b>	<b>Corr. Area % of Total</b>	<b>Size distribution in CV [%]</b>	<b>Co lor</b>
62.77	94.36	458	256,896.5	70,209.77	13,311.5	88	28.0

Assay Class: High Sensitivity DNA Assay  
 Data Path: C:\...ents and Settings\Bioanalyzer\2012-06-04\2012-06-04\_003.xad

Created: 6/4/2012 11:57:43 AM  
 Modified: 6/4/2012 12:39:03 PM

**Electropherogram Summary Continued ...**



**Overall Results for sample 10 : Con4**

Number of peaks found: 16                      Corr. Area 1: 9,717.2  
 Noise: 0.7

**Peak table for sample 10 : Con4**

Peak	Size [bp]	Conc. [pg/μl]	Molarity [pmol/l]	Observations
1	35	125.00	5,411.3	Lower Marker
2	43	17.76	622.3	
3	386	5,442.90	21,347.4	
4	400	8,909.76	33,758.3	
5	1,202	32.17	40.5	
6	1,378	52.69	57.9	
7	2,174	306.05	213.3	
8	2,549	131.86	78.4	
9	2,997	203.82	103.0	
10	5,316	301.63	86.0	
11	7,072	91.51	19.6	
12	10,380	75.00	10.9	Upper Marker
13	12,705	0.00	0.0	
14	13,867	0.00	0.0	
15	14,672	0.00	0.0	
16	18,472	0.00	0.0	
17	19,948	0.00	0.0	
18	21,647	0.00	0.0	

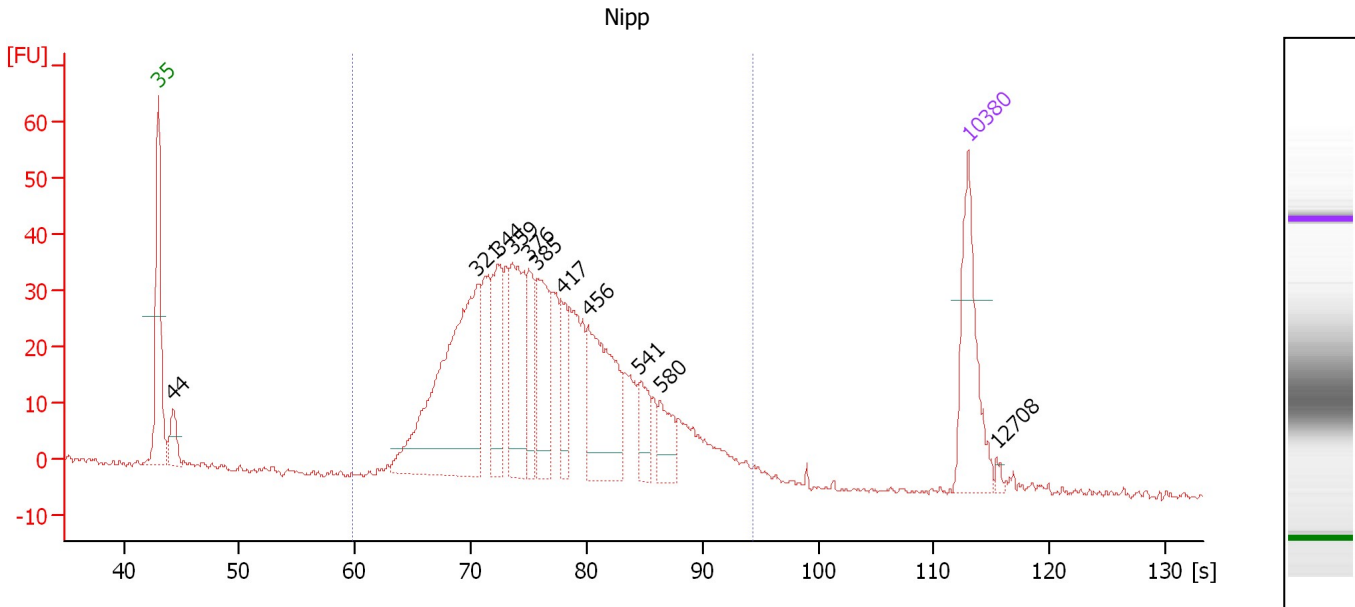
**Region table for sample 10 : Con4**

From [s]	To [s]	Average Size [bp]	Molarity [pmol/l]	Conc. [pg/μl]	Corr. Area % of Total	Size distribution in CV [%]	Color
63.47	97.11	465	52,507.4	14,497.10	9,717.2 89	32.8	Blue

Assay Class: High Sensitivity DNA Assay  
 Data Path: C:\...ents and Settings\Bioanalyzer\2012-06-04\2012-06-04\_003.xad

Created: 6/4/2012 11:57:43 AM  
 Modified: 6/4/2012 12:39:03 PM

**Electropherogram Summary Continued ...**



**Overall Results for sample 11 : Nipp**

Number of peaks found: 11                      Corr. Area 1: 825.1  
 Noise: 0.5

**Peak table for sample 11 : Nipp**

Peak	Size [bp]	Conc. [pg/µl]	Molarity [pmol/l]	Observations
1	35	125.00	5,411.3	Lower Marker
2	44	31.52	1,095.7	
3	321	280.08	1,322.2	
4	344	79.42	349.8	
5	359	103.41	436.7	
6	376	51.90	209.1	
7	385	81.26	319.8	
8	417	35.96	130.7	
9	456	120.53	400.5	
10	541	29.13	81.5	
11	580	29.40	76.8	
12	10,380	75.00	10.9	Upper Marker
13	12,708	0.00	0.0	

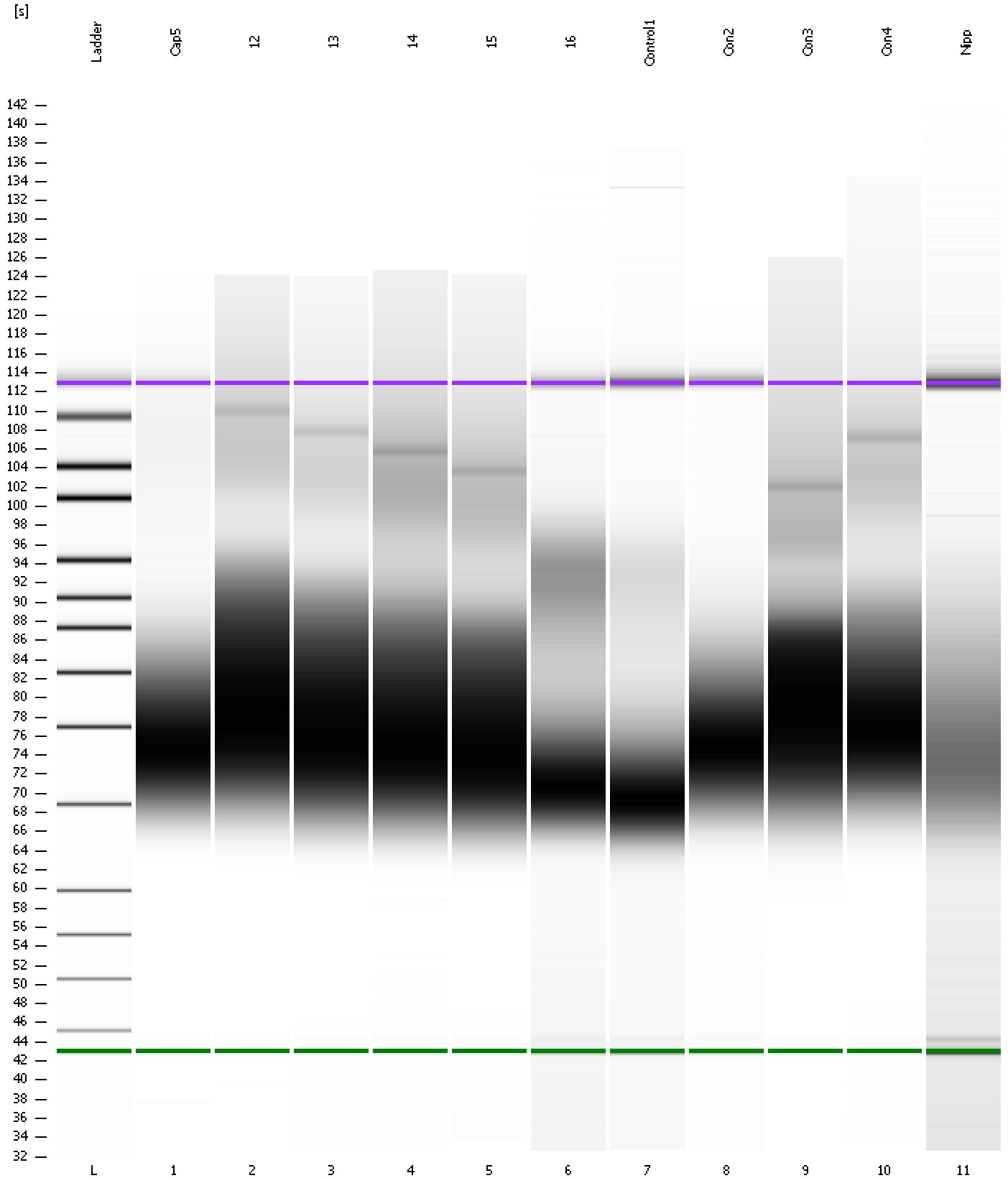
**Region table for sample 11 : Nipp**

From [s]	To [s]	Average Size [bp]	Molarity [pmol/l]	Conc. [pg/µl]	Corr. Area % of Total	Size distribution in CV [%]	Color
59.86	94.36	417	4,646.0	1,162.05	825.1 95	29.1	Blue

Assay Class: High Sensitivity DNA Assay  
Data Path: C:\...ents and Settings\Bioanalyzer\2012-06-04\2012-06-04\_003.xad

Created: 6/4/2012 11:57:43 AM  
Modified: 6/4/2012 12:39:03 PM

**Gel Image**



Assay Class: High Sensitivity DNA Assay  
 Data Path: C:\...ents and Settings\Bioanalyzer\2012-06-04\2012-06-04\_003.xad

Created: 6/4/2012 11:57:43 AM  
 Modified: 6/4/2012 12:39:03 PM

**Run Logbook**

Description	Number	Source	Category	Sub Category	Time	Time Zone	User	Host
Run ended on port 1 (Number of wells acquired: 12)		Instrument	Run		6/4/2012 12:39:00 PM	(GMT --07:00) Pacific Standard Time	UC Davis	D8XSMGH1
Run started on port 1 (File: C:\Documents and Settings\Bioanalyzer\2012-06-04\2012-06-04_003.xad)		Instrument	Run		6/4/2012 11:57:49 AM	(GMT --07:00) Pacific Standard Time	UC Davis	D8XSMGH1
Product Number : G2938B		Instrument	Run		6/4/2012 11:57:49 AM	(GMT --07:00) Pacific Standard Time	UC Davis	D8XSMGH1
Name :		Instrument	Run		6/4/2012 11:57:49 AM	(GMT --07:00) Pacific Standard Time	UC Davis	D8XSMGH1
Vendor : Agilent Technologies		Instrument	Run		6/4/2012 11:57:49 AM	(GMT --07:00) Pacific Standard Time	UC Davis	D8XSMGH1
Serial# : DE13701086		Instrument	Run		6/4/2012 11:57:49 AM	(GMT --07:00) Pacific Standard Time	UC Davis	D8XSMGH1
Firmware : C.01.069		Instrument	Run		6/4/2012 11:57:49 AM	(GMT --07:00) Pacific Standard Time	UC Davis	D8XSMGH1
Cartridge : Electrode		Instrument	Run		6/4/2012 11:57:49 AM	(GMT --07:00) Pacific Standard Time	UC Davis	D8XSMGH1