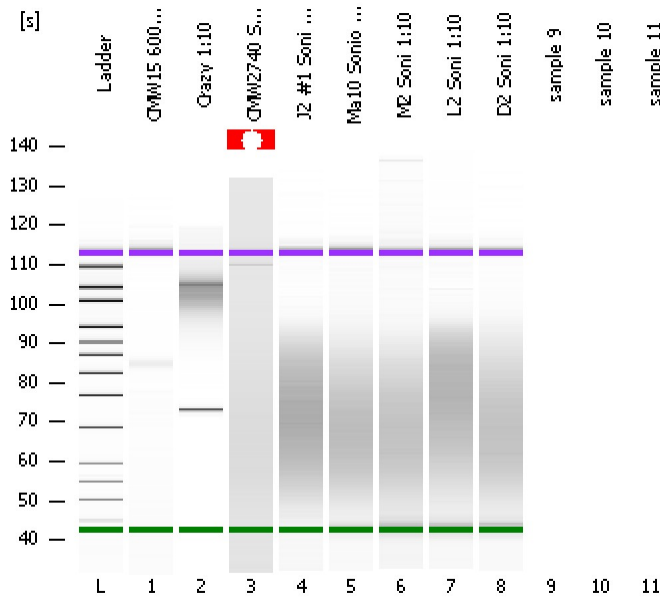


Assay Class: High Sensitivity DNA Assay
Data Path: C:\...ents and Settings\Bioanalyzer\2012-06-04\2012-06-04_004.xad

Created: 6/4/2012 1:32:43 PM
Modified: 6/4/2012 2:13:33 PM

Electrophoresis File Run Summary



Instrument Information:

Instrument Name: DE13701086 Firmware: C.01.069
Serial#: DE13701086 Type: G2938B

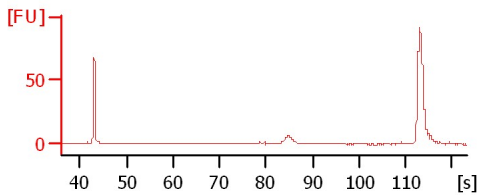
Assay Information:

Assay Origin Path: C:\Program Files\Agilent\2100 bioanalyzer\2100 expert\assays\dsDNA\High Sensitivity DNA.xsy
Assay Class: High Sensitivity DNA Assay
Version: 1.03
Assay Comments: Copyright © 2003-2010 Agilent Technologies

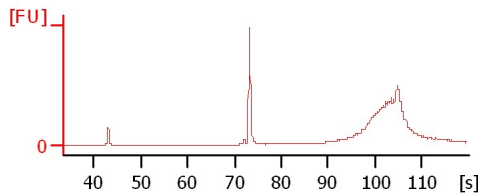
Chip Information:

Chip Lot #:
Reagent Kit Lot #:
Chip Comments:

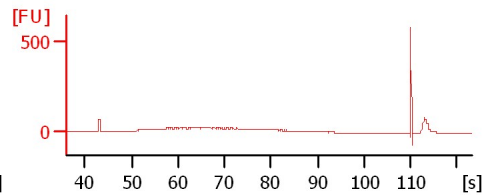
CMW15 600bp Lib (Pippin 612bp)



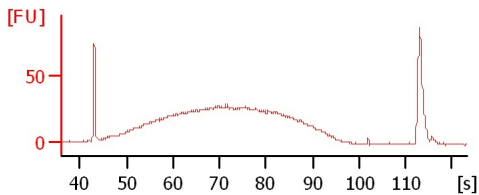
Crazy 1:10



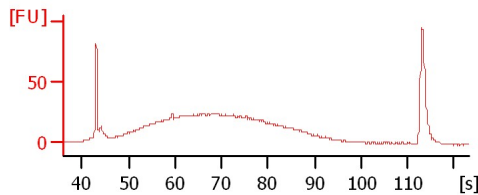
CMW2740 Soni 1:10



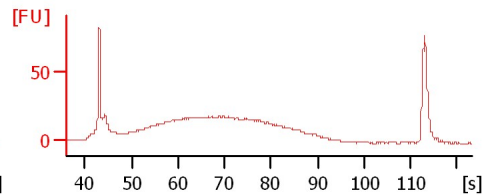
J2 #1 Soni 1:10



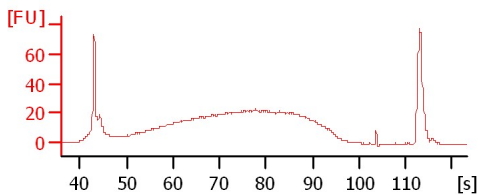
Ma10 Sonio 1:10



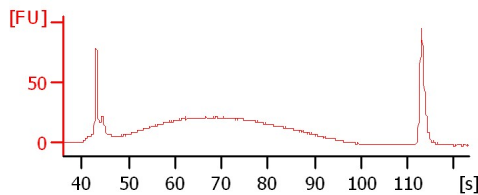
M2 Soni 1:10



L2 Soni 1:10



D2 Soni 1:10



Assay Class: High Sensitivity DNA Assay
Data Path: C:\...ents and Settings\Bioanalyzer\2012-06-04\2012-06-04_004.xad

Created: 6/4/2012 1:32:43 PM
Modified: 6/4/2012 2:13:33 PM

Electrophoresis File Run Summary (Chip Summary)

Sample Name	Sample Comment	Rest. Digest	Status	Observation	Result Label	Result Color
CMW15 600bp Lib (Pippin 612bp)		<input type="checkbox"/>	✓			
Crazy 1:10		<input type="checkbox"/>	✓			
CMW2740 Soni 1:10		<input type="checkbox"/>	⚠			
J2 #1 Soni 1:10		<input type="checkbox"/>	✓			
Ma10 Sonio 1:10		<input type="checkbox"/>	✓			
M2 Soni 1:10		<input type="checkbox"/>	✓			
L2 Soni 1:10		<input type="checkbox"/>	✓			
D2 Soni 1:10		<input type="checkbox"/>	✓			
sample 9		<input type="checkbox"/>				
sample 10		<input type="checkbox"/>				
sample 11		<input type="checkbox"/>				
Ladder		<input type="checkbox"/>	✓			

Chip Lot #

Reagent Kit Lot #

Chip Comments :

Assay Class: High Sensitivity DNA Assay
Data Path: C:\...ents and Settings\Bioanalyzer\2012-06-04\2012-06-04_004.xad

Created: 6/4/2012 1:32:43 PM
Modified: 6/4/2012 2:13:33 PM

Electrophoresis Assay Details

General Analysis Settings

Number of Available Sample and Ladder Wells (Max.) : 12
Minimum Visible Range [s] : 32
Maximum Visible Range [s] : 138
Start Analysis Time Range [s] : 33
End Analysis Time Range [s] : 137.5
Ladder Concentration [pg/ μ l] : 1950
Uses Standard Area for Ladder Fragments
Lower Marker Concentration [pg/ μ l] : 125
Upper Marker Concentration [pg/ μ l] : 75
Used Upper Marker for Quantitation
Standard Curve Fit is Point to Point
Show Data Aligned to Lower and Upper Marker

Integrator Settings

Integration Start Time [s] : 33.05
Integration End Time [s] : 137
Slope Threshold : 0.8
Height Threshold [FU] : 5
Area Threshold : 0.1
Width Threshold [s] : 0.6
Baseline Plateau [s] : 0.5

Filter Settings

Filter Width [s] : 0.5
Polynomial Order : 4

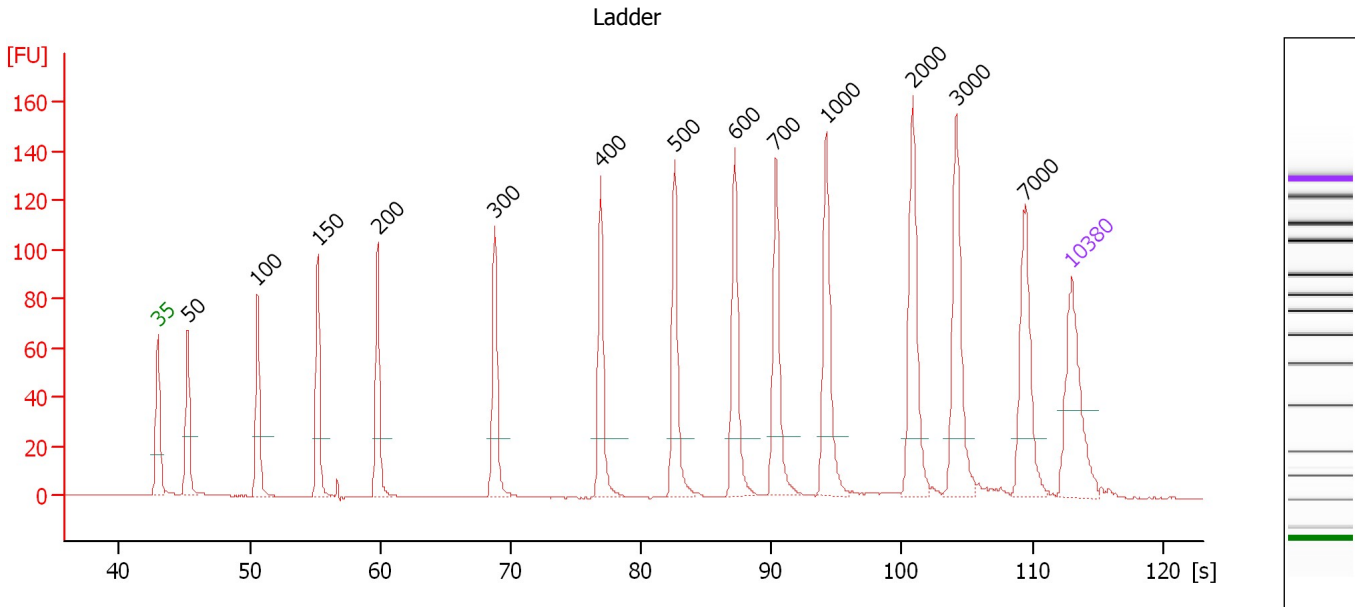
Ladder

Ladder Peak	Size	Area
1	35	160
2	50	210
3	100	208
4	150	221
5	200	242
6	300	270
7	400	305
8	500	306
9	600	336
10	700	321
11	1000	366
12	2000	413
13	3000	411
14	7000	400
15	10380	214

Assay Class: High Sensitivity DNA Assay
 Data Path: C:\...ents and Settings\Bioanalyzer\2012-06-04\2012-06-04_004.xad

Created: 6/4/2012 1:32:43 PM
 Modified: 6/4/2012 2:13:33 PM

Electropherogram Summary



Overall Results for Ladder

Noise: 0.1

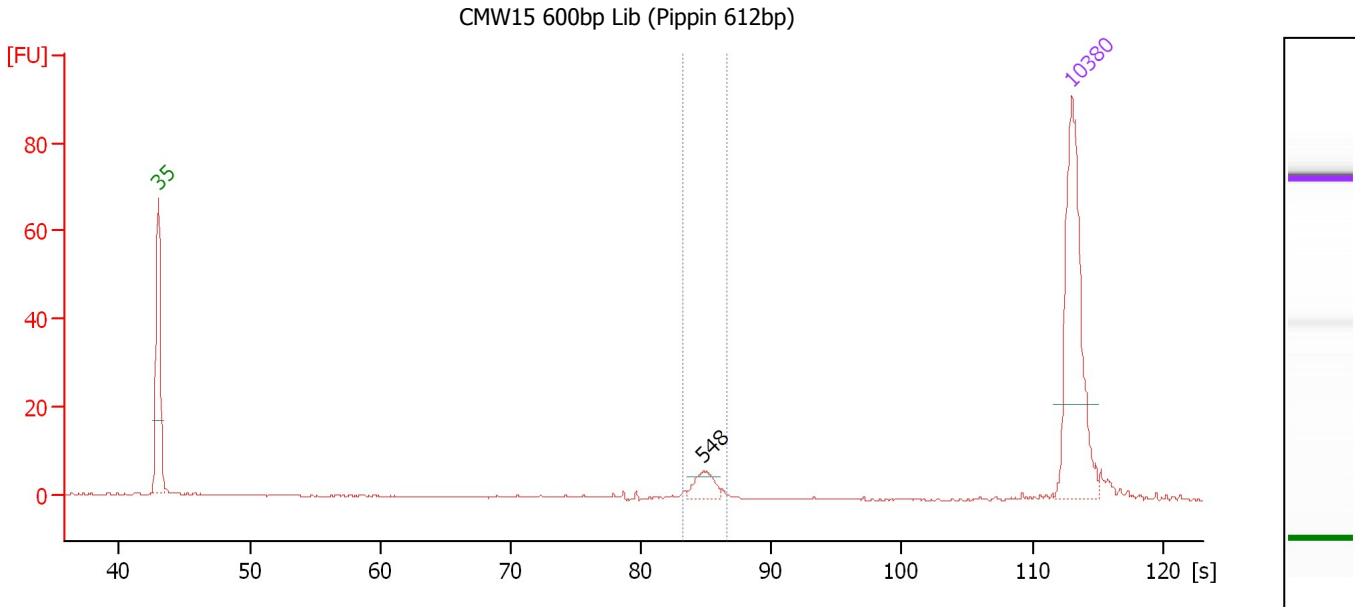
Peak table for Ladder

Peak	Size [bp]	Conc. [pg/μl]	Molarity [pmol/l]	Observations
1	35	125.00	5,411.3	Lower Marker
2	50	150.00	4,545.5	Ladder Peak
3	100	150.00	2,272.7	Ladder Peak
4	150	150.00	1,515.2	Ladder Peak
5	200	150.00	1,136.4	Ladder Peak
6	300	150.00	757.6	Ladder Peak
7	400	150.00	568.2	Ladder Peak
8	500	150.00	454.5	Ladder Peak
9	600	150.00	378.8	Ladder Peak
10	700	150.00	324.7	Ladder Peak
11	1,000	150.00	227.3	Ladder Peak
12	2,000	150.00	113.6	Ladder Peak
13	3,000	150.00	75.8	Ladder Peak
14	7,000	150.00	32.5	Ladder Peak
15	10,380	75.00	10.9	Upper Marker

Assay Class: High Sensitivity DNA Assay
 Data Path: C:\...ents and Settings\Bioanalyzer\2012-06-04\2012-06-04_004.xad

Created: 6/4/2012 1:32:43 PM
 Modified: 6/4/2012 2:13:33 PM

Electropherogram Summary Continued ...



Overall Results for sample 1 : CMW15 600bp Lib (Pippin 612bp)

Number of peaks found: 1 Corr. Area 1: 14.1
 Noise: 0.1

Peak table for sample 1 : CMW15 600bp Lib (Pippin 612bp)

Peak	Size [bp]	Conc. [pg/μl]	Molarity [pmol/l]	Observations
1	35	125.00	5,411.3	Lower Marker
2	548	11.74	32.5	
3	10,380	75.00	10.9	Upper Marker

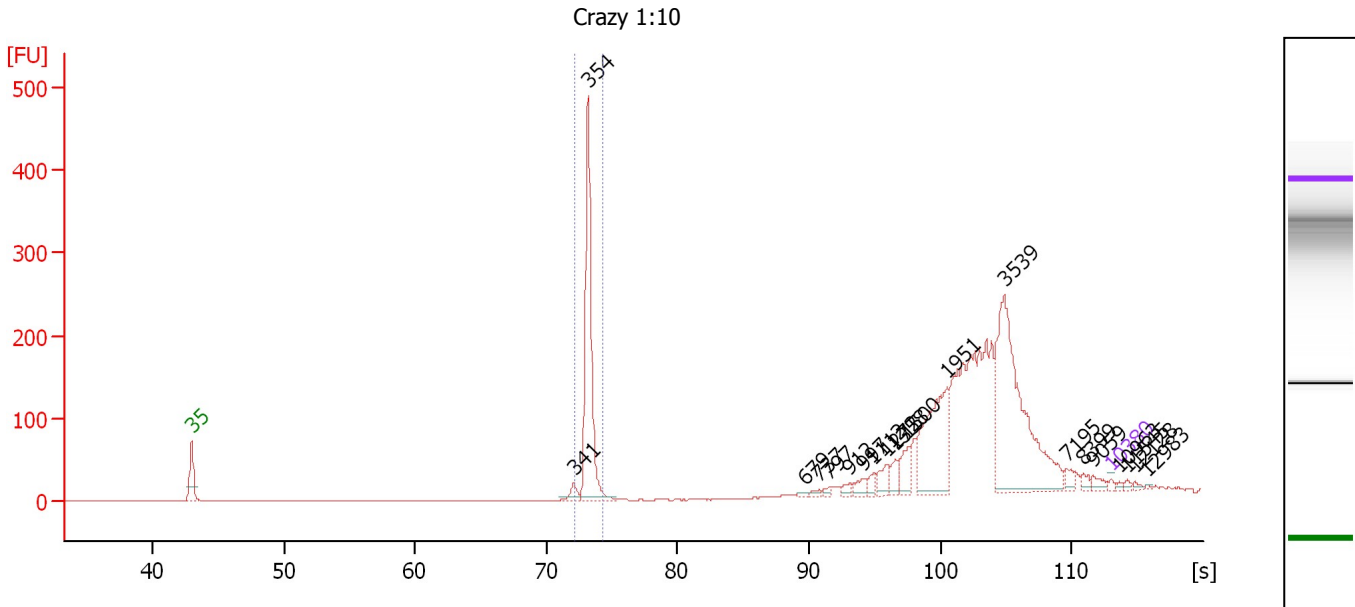
Region table for sample 1 : CMW15 600bp Lib (Pippin 612bp)

From [s]	To [s]	Average Size [bp]	Molarity [pmol/l]	Conc. [pg/μl]	Corr. Area	% of Total	Size distribution in CV [%]	Color
83.15	86.60	550	34.2	12.42	14.1	38	3.0	Blue

Assay Class: High Sensitivity DNA Assay
 Data Path: C:\...ents and Settings\Bioanalyzer\2012-06-04\2012-06-04_004.xad

Created: 6/4/2012 1:32:43 PM
 Modified: 6/4/2012 2:13:33 PM

Electropherogram Summary Continued ...



Overall Results for sample 2 : Crazy 1:10

Number of peaks found: 20 Corr. Area 1: 378.6
 Noise: 0.1

Peak table for sample 2 : Crazy 1:10

Peak	Size [bp]	Conc. [pg/μl]	Molarity [pmol/l]	Observations
1	35	125.00	5,411.3	Lower Marker
2	341	342.62	1,522.4	
3	354	6,642.98	28,422.3	
4	679	89.18	199.0	
5	737	131.51	270.3	
6	797	129.48	246.0	
7	912	191.81	318.8	
8	997	272.52	414.1	
9	1,112	240.73	328.1	
10	1,272	488.34	581.7	
11	1,358	380.54	424.5	
12	1,500	654.32	660.8	
13	1,951	3,203.80	2,488.4	
14	3,539	6,782.44	2,903.6	
15	7,195	239.37	50.4	
16	8,399	166.34	30.0	
17	9,059	204.24	34.2	
18	10,380	75.00	10.9	Upper Marker
19	10,963	0.00	0.0	
20	11,545	0.00	0.0	
21	12,128	0.00	0.0	
22	12,983	0.00	0.0	

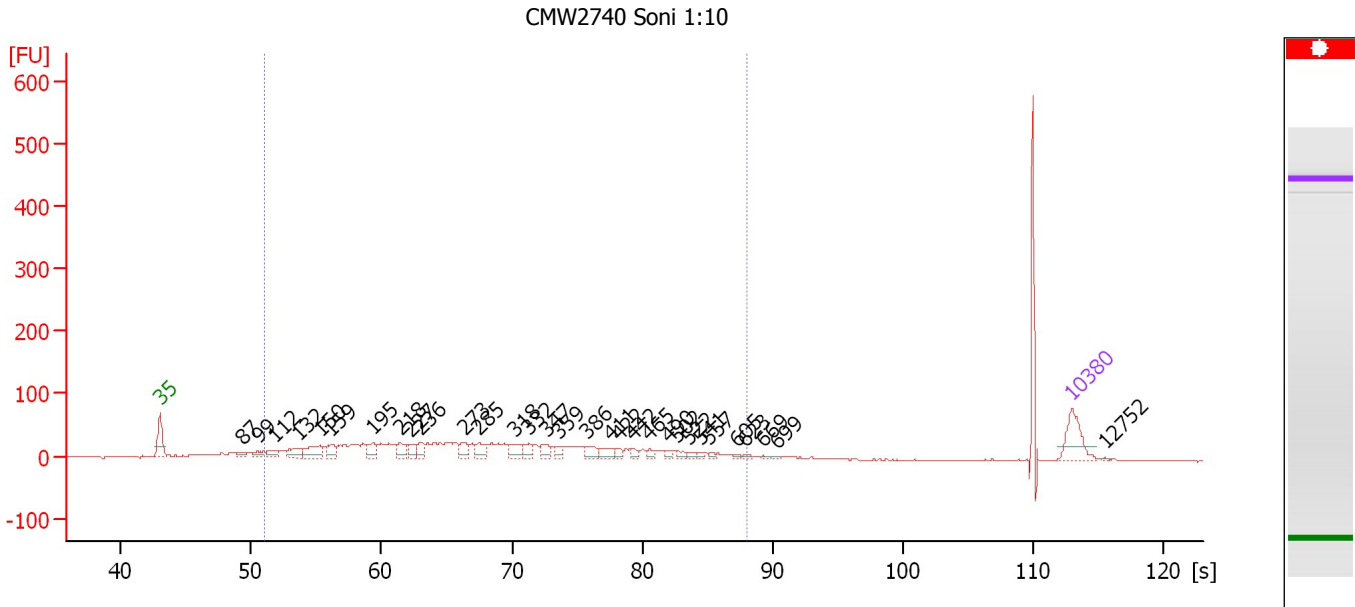
Region table for sample 2 : Crazy 1:10

From [s]	To [s]	Average Size [bp]	Molarity [pmol/l]	Conc. [pg/μl]	Corr. Area % of Total	Size distribution in CV [%]	Color
72.22	74.33	355	27,541.0	6,449.67	378.6 17	0.9	Blue

Assay Class: High Sensitivity DNA Assay
 Data Path: C:\...ents and Settings\Bioanalyzer\2012-06-04\2012-06-04_004.xad

Created: 6/4/2012 1:32:43 PM
 Modified: 6/4/2012 2:13:33 PM

Electropherogram Summary Continued ...



Overall Results for sample 3 : CMW2740 Soni 1:10

Number of peaks found: 31 Corr. Area 1: 1,002.7
 Noise: 0.8

Peak table for sample 3 : CMW2740 Soni 1:10

Peak	Size [bp]	Conc. [pg/μl]	Molarity [pmol/l]	Observations
1	35	125.00	5,411.3	Lower Marker
2	87	18.51	320.7	
3	99	27.31	418.2	
4	112	33.85	457.9	
5	132	51.20	586.1	
6	150	77.08	777.6	
7	159	38.62	366.9	
8	195	43.63	339.1	
9	218	41.72	290.1	
10	227	30.80	205.7	
11	236	36.12	232.2	
12	273	35.77	198.5	
13	285	38.21	203.1	
14	318	41.63	198.6	
15	332	31.14	142.2	
16	347	31.81	138.8	
17	359	19.94	84.2	
18	386	29.56	116.1	
19	411	29.73	109.5	
20	422	15.70	56.4	
21	442	15.30	52.5	
22	465	12.50	40.7	
23	490	10.67	33.0	
24	502	13.85	41.8	
25	522	9.50	27.5	
26	541	8.13	22.8	

Assay Class: High Sensitivity DNA Assay
 Data Path: C:\...ents and Settings\Bioanalyzer\2012-06-04\2012-06-04_004.xad


Created: 6/4/2012 1:32:43 PM
 Modified: 6/4/2012 2:13:33 PM

Electropherogram Summary Continued ...

... Peak table for sample 3 : CMW2740 Soni 1:10

Peak	Size [bp]	Conc. [pg/µl]	Molarity [pmol/l]	Observations
27	557	7.88	21.4	
28	605	5.16	12.9	
29	623	6.89	16.7	
30	669	5.16	11.7	
31	699	4.41	9.6	
32	10,380	75.00	10.9	Upper Marker
33	12,752	0.00	0.0	

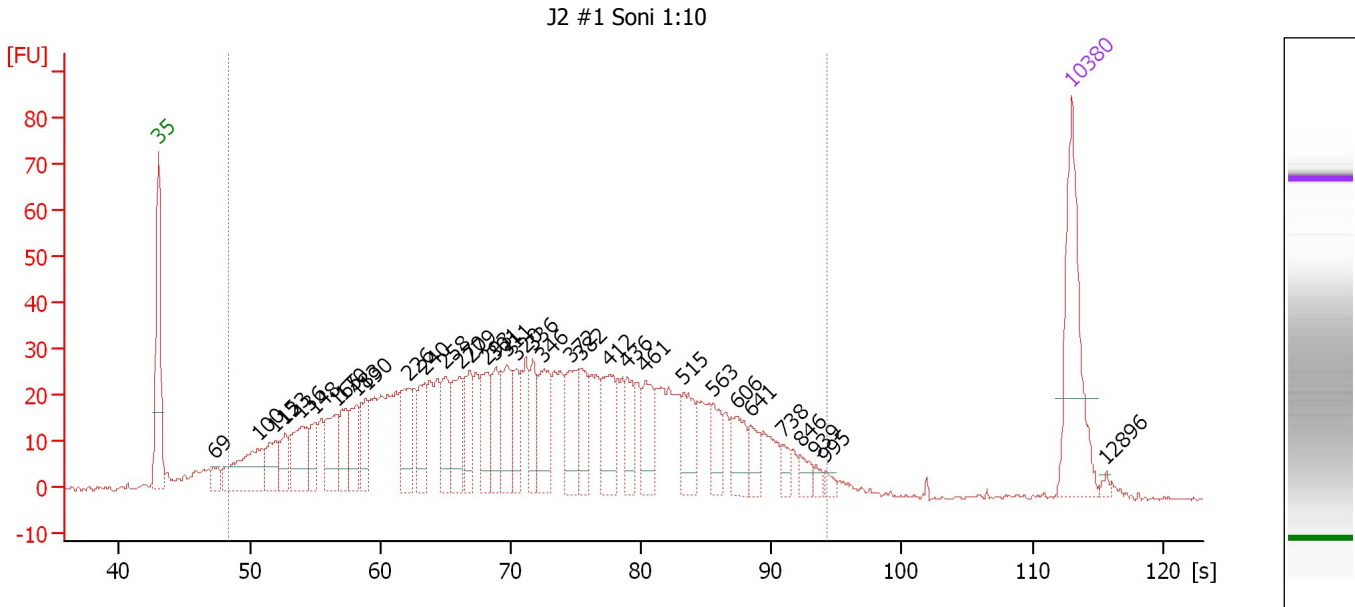
Region table for sample 3 : CMW2740 Soni 1:10

From [s]	To [s]	Average Size [bp]	Molarity [pmol/l]	Conc. [pg/µl]	Corr. Area % of Total	Size distribution in CV [%]	Color	
51.05	88.05	301	8,415.5	1,291.82	1,002.7	82	39.6	

Assay Class: High Sensitivity DNA Assay
 Data Path: C:\...ents and Settings\Bioanalyzer\2012-06-04\2012-06-04_004.xad

Created: 6/4/2012 1:32:43 PM
 Modified: 6/4/2012 2:13:33 PM

Electropherogram Summary Continued ...



Overall Results for sample 4 : J2 #1 Soni 1:10

Number of peaks found: 35 Corr. Area 1: 1,282.4
 Noise: 0.3

Peak table for sample 4 : J2 #1 Soni 1:10

Peak	Size [bp]	Conc. [pg/μl]	Molarity [pmol/l]	Observations
1	35	125.00	5,411.3	Lower Marker
2	69	13.03	286.5	
3	100	76.92	1,165.3	
4	115	33.39	441.5	
5	123	27.72	341.7	
6	136	55.71	621.0	
7	148	26.37	270.2	
8	165	44.78	410.6	
9	170	36.19	321.7	
10	183	36.39	302.0	
11	190	33.25	264.5	
12	226	46.52	311.7	
13	240	34.20	215.8	
14	258	37.15	218.4	
15	270	48.26	270.7	
16	279	32.01	174.0	
17	293	35.99	186.4	
18	301	36.15	182.2	
19	311	43.09	209.7	
20	320	32.40	153.2	
21	336	29.49	133.1	
22	346	47.20	206.7	
23	372	42.93	175.1	
24	382	34.08	135.3	
25	412	47.33	174.1	
26	436	25.92	90.2	

Assay Class: High Sensitivity DNA Assay
 Data Path: C:\...ents and Settings\Bioanalyzer\2012-06-04\2012-06-04_004.xad


Created: 6/4/2012 1:32:43 PM
 Modified: 6/4/2012 2:13:33 PM

Electropherogram Summary Continued ...

... Peak table for sample 4 : J2 #1 Soni 1:10

Peak	Size [bp]	Conc. [pg/µl]	Molarity [pmol/l]	Observations
27	461	34.39	113.0	
28	515	31.93	94.0	
29	563	22.95	61.8	
30	606	27.38	68.5	
31	641	16.01	37.9	
32	738	8.51	17.5	
33	846	9.64	17.3	
34	939	4.87	7.9	
35	995	4.49	6.8	
36	▶ 10,380	75.00	10.9	Upper Marker
37	12,896	0.00	0.0	

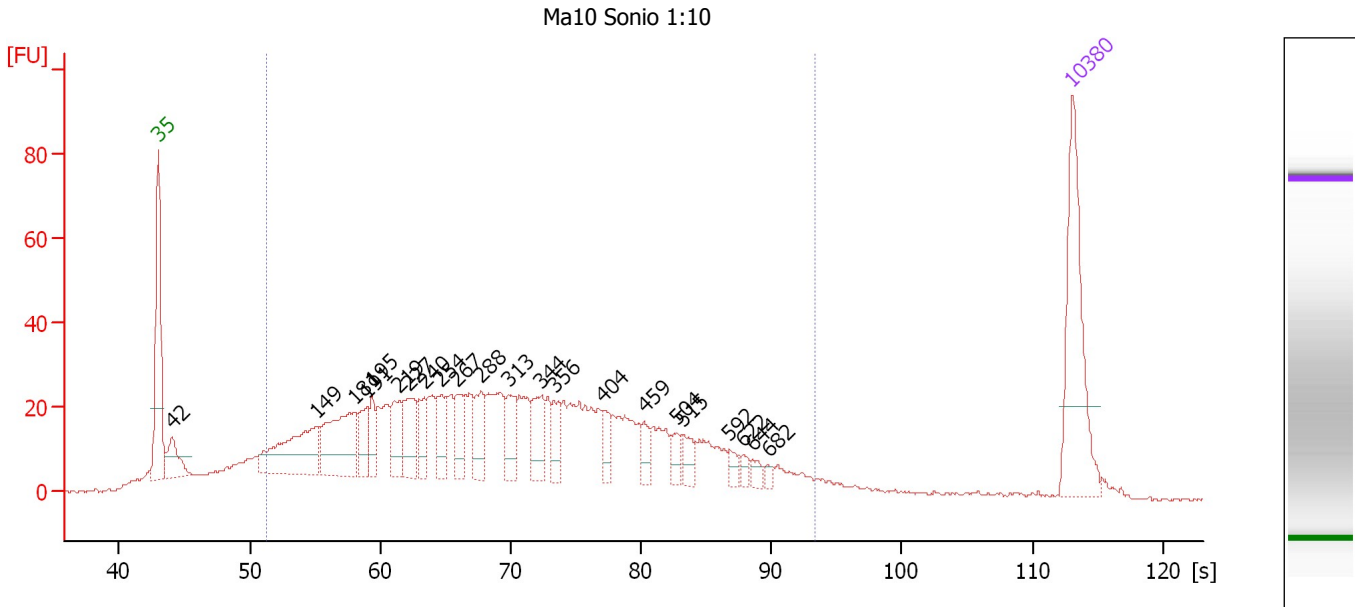
Region table for sample 4 : J2 #1 Soni 1:10

From [s]	To [s]	Average Size [bp]	Molarity [pmol/l]	Conc. [pg/µl]	Corr. Area % of Total	Size distribution in CV [%]	Color
48.38	94.19	360	10,137.8	1,639.92	1,282.4 96	46.8	

Assay Class: High Sensitivity DNA Assay
 Data Path: C:\...ents and Settings\Bioanalyzer\2012-06-04\2012-06-04_004.xad

Created: 6/4/2012 1:32:43 PM
 Modified: 6/4/2012 2:13:33 PM

Electropherogram Summary Continued ...



Overall Results for sample 5 : Ma10 Sonio 1:10

Number of peaks found: 22 Corr. Area 1: 1,073.7
 Noise: 0.3

Peak table for sample 5 : Ma10 Sonio 1:10

Peak	Size [bp]	Conc. [pg/μl]	Molarity [pmol/l]	Observations
1	35	125.00	5,411.3	Lower Marker
2	42	32.39	1,164.9	
3	149	91.78	935.3	
4	181	83.19	697.3	
5	191	24.58	195.1	
6	195	22.87	177.5	
7	219	32.72	226.8	
8	227	38.66	258.3	
9	240	23.82	150.5	
10	254	24.13	143.9	
11	267	27.23	154.5	
12	288	29.39	154.4	
13	313	25.91	125.3	
14	344	32.14	141.5	
15	356	18.19	77.4	
16	404	13.70	51.4	
17	459	11.82	39.0	
18	504	10.44	31.4	
19	515	13.38	39.4	
20	592	7.38	18.9	
21	622	5.45	13.3	
22	644	5.80	13.6	
23	682	3.67	8.2	
24	10,380	75.00	10.9	Upper Marker

Assay Class: High Sensitivity DNA Assay
Data Path: C:\...ents and Settings\Bioanalyzer\2012-06-04\2012-06-04_004.xad

Created: 6/4/2012 1:32:43 PM
Modified: 6/4/2012 2:13:33 PM

Electropherogram Summary Continued ...

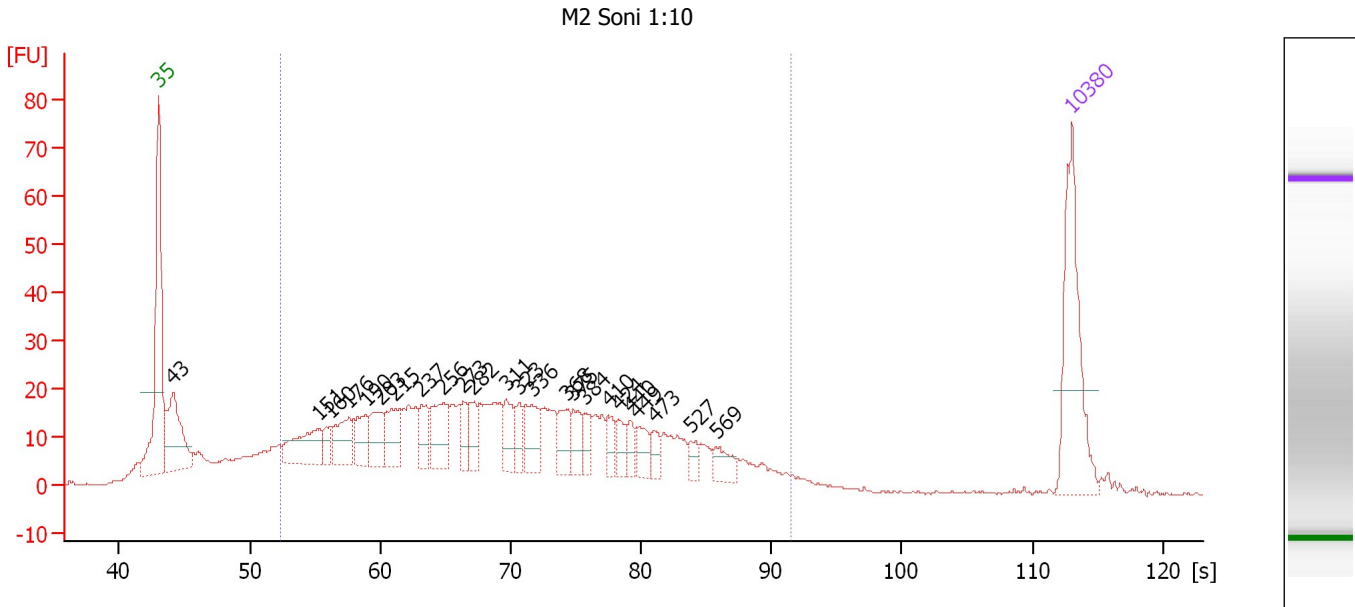
... Region table for sample 5 : Ma10 Sonio 1:10

From [s]	To [s]	Average Size [bp]	Molarity [pmol/l]	Conc. [pg/μl]	Corr. Area % of Total	Size distribution in CV [%]	Color
51.24	93.37	336	7,245.7	1,180.37	1,073.7 86	45.2	■

Assay Class: High Sensitivity DNA Assay
 Data Path: C:\...ents and Settings\Bioanalyzer\2012-06-04\2012-06-04_004.xad

Created: 6/4/2012 1:32:43 PM
 Modified: 6/4/2012 2:13:33 PM

Electropherogram Summary Continued ...



Overall Results for sample 6 : M2 Soni 1:10

Number of peaks found: 24 Corr. Area 1: 776.3
 Noise: 0.3

Peak table for sample 6 : M2 Soni 1:10


Peak	Size [bp]	Conc. [pg/μl]	Molarity [pmol/l]	Observations
1	35	125.00	5,411.3	Lower Marker
2	43	85.60	3,050.9	
3	151	50.77	508.7	
4	160	15.40	145.5	
5	176	38.93	335.1	
6	190	30.57	243.8	
7	203	30.68	229.0	
8	215	34.47	242.8	
9	237	25.18	160.9	
10	256	40.90	241.8	
11	273	18.97	105.2	
12	282	20.18	108.6	
13	311	24.51	119.5	
14	323	17.04	80.0	
15	336	32.51	146.8	
16	368	22.18	91.3	
17	375	18.42	74.5	
18	384	14.37	56.6	
19	410	14.08	52.0	
20	424	13.14	47.0	
21	440	12.64	43.5	
22	449	16.79	56.6	
23	473	9.91	31.7	
24	527	8.10	23.3	
25	569	14.89	39.6	
26	10,380	75.00	10.9	Upper Marker

Assay Class: High Sensitivity DNA Assay
Data Path: C:\...ents and Settings\Bioanalyzer\2012-06-04\2012-06-04_004.xad

Created: 6/4/2012 1:32:43 PM
Modified: 6/4/2012 2:13:33 PM

Electropherogram Summary Continued ...

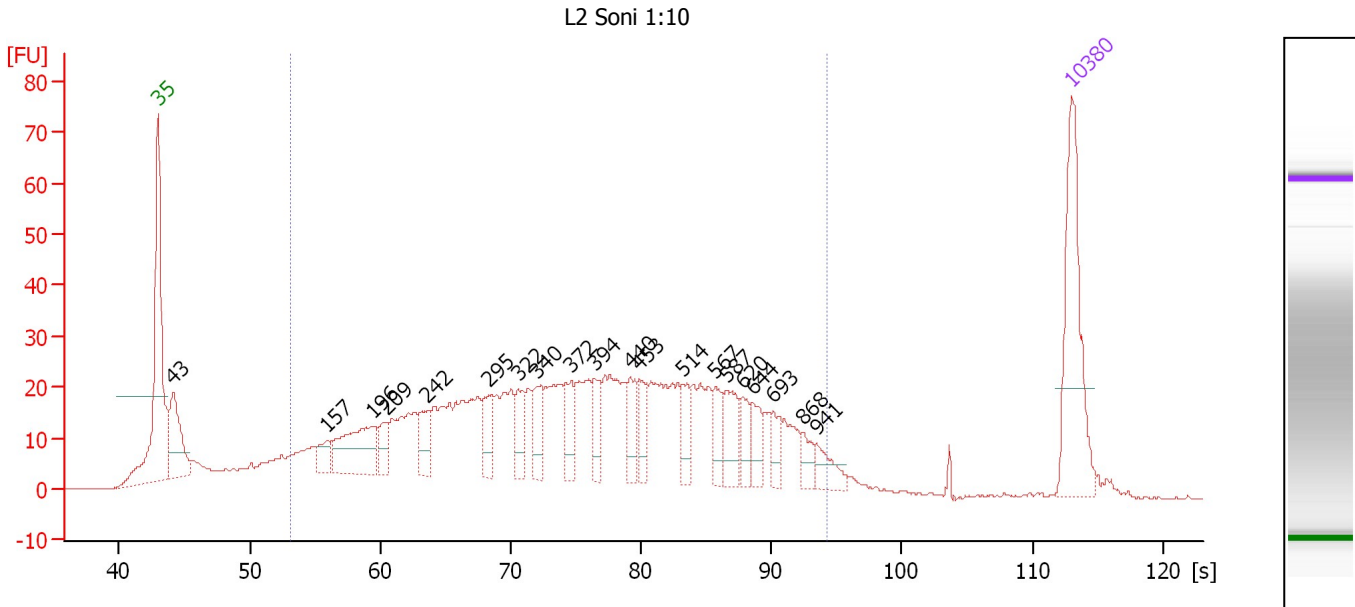
... Region table for sample 6 : M2 Soni 1:10

From [s]	To [s]	Average Size [bp]	Molarity [pmol/l]	Conc. [pg/μl]	Corr. Area % of Total	Size distribution in CV [%]	Color	
52.33	91.42	331	6,370.0	1,064.64	776.3	80	41.0	

Assay Class: High Sensitivity DNA Assay
 Data Path: C:\...ents and Settings\Bioanalyzer\2012-06-04\2012-06-04_004.xad

Created: 6/4/2012 1:32:43 PM
 Modified: 6/4/2012 2:13:33 PM

Electropherogram Summary Continued ...



Overall Results for sample 7 : L2 Soni 1:10

Number of peaks found: 20 Corr. Area 1: 971.0
 Noise: 0.2

Peak table for sample 7 : L2 Soni 1:10

Peak	Size [bp]	Conc. [pg/μl]	Molarity [pmol/l]	Observations
1	35	125.00	5,411.3	Lower Marker
2	43	66.60	2,369.1	
3	157	15.25	147.1	
4	196	68.33	527.2	
5	209	19.04	138.4	
6	242	23.41	146.3	
7	295	24.65	126.8	
8	322	23.24	109.2	
9	340	23.55	105.0	
10	372	23.04	93.9	
11	394	19.82	76.2	
12	440	24.93	85.9	
13	453	18.69	62.5	
14	514	17.38	51.2	
15	567	20.18	53.9	
16	587	26.79	69.1	
17	620	16.44	40.2	
18	644	18.07	42.5	
19	693	15.63	34.2	
20	868	10.23	17.9	
21	941	14.65	23.6	
22	10,380	75.00	10.9	Upper Marker

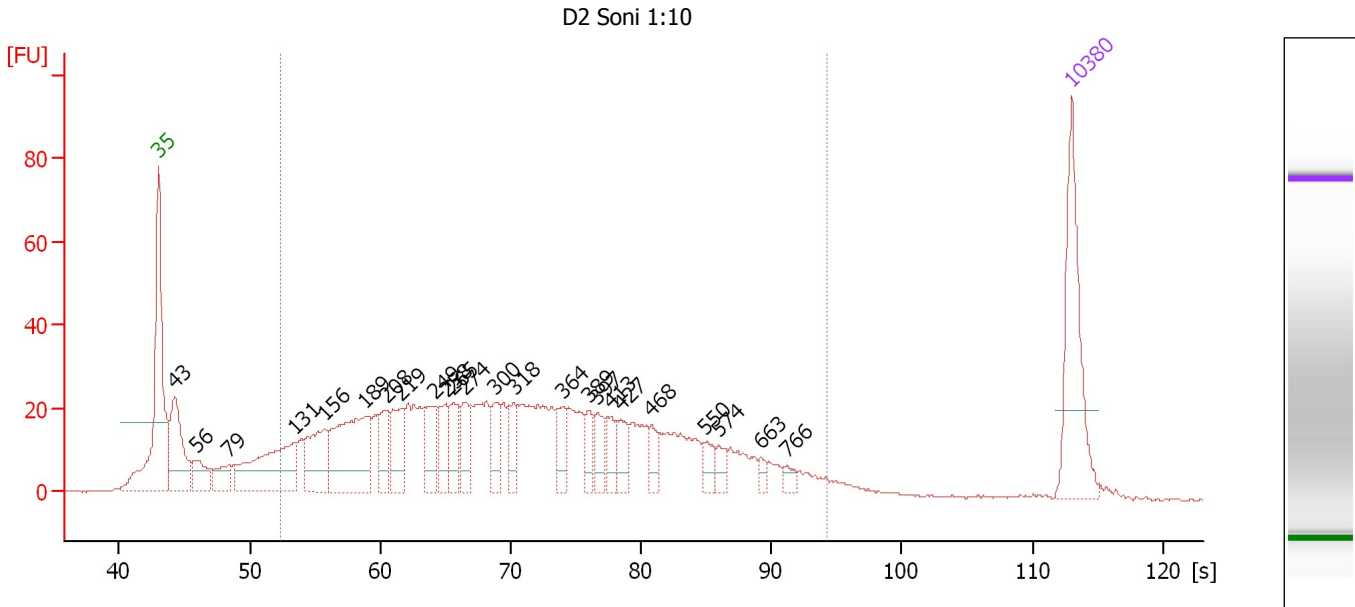
Region table for sample 7 : L2 Soni 1:10

From [s]	To [s]	Average Size [bp]	Molarity [pmol/l]	Conc. [pg/μl]	Corr. Area % of Total	Size distribution in CV [%]	Color
53.13	94.19	412	6,013.7	1,206.06	971.0 86	43.4	Blue

Assay Class: High Sensitivity DNA Assay
 Data Path: C:\...ents and Settings\Bioanalyzer\2012-06-04\2012-06-04_004.xad

Created: 6/4/2012 1:32:43 PM
 Modified: 6/4/2012 2:13:33 PM

Electropherogram Summary Continued ...



Overall Results for sample 8 : D2 Soni 1:10

Number of peaks found: 24 Corr. Area 1: 979.4
 Noise: 0.2

Peak table for sample 8 : D2 Soni 1:10

Peak	Size [bp]	Conc. [pg/μl]	Molarity [pmol/l]	Observations
1	35	125.00	5,411.3	Lower Marker
2	43	87.87	3,074.9	
3	56	32.10	875.6	
4	79	26.03	498.8	
5	131	116.22	1,348.1	
6	156	64.70	629.9	
7	189	125.47	1,005.6	
8	208	35.53	259.0	
9	219	43.83	303.3	
10	249	36.19	220.6	
11	258	31.91	187.3	
12	265	29.86	170.8	
13	274	31.34	173.5	
14	300	24.00	121.2	
15	318	24.36	116.1	
16	364	21.10	87.7	
17	389	18.90	73.6	
18	397	19.31	73.8	
19	413	15.78	57.9	
20	427	21.77	77.2	
21	468	13.97	45.2	
22	550	13.12	36.2	
23	574	11.07	29.2	
24	663	6.20	14.1	
25	766	6.30	12.5	
26	10,380	75.00	10.9	Upper Marker

Assay Class: High Sensitivity DNA Assay
Data Path: C:\...ents and Settings\Bioanalyzer\2012-06-04\2012-06-04_004.xad

Created: 6/4/2012 1:32:43 PM
Modified: 6/4/2012 2:13:33 PM

Electropherogram Summary Continued ...

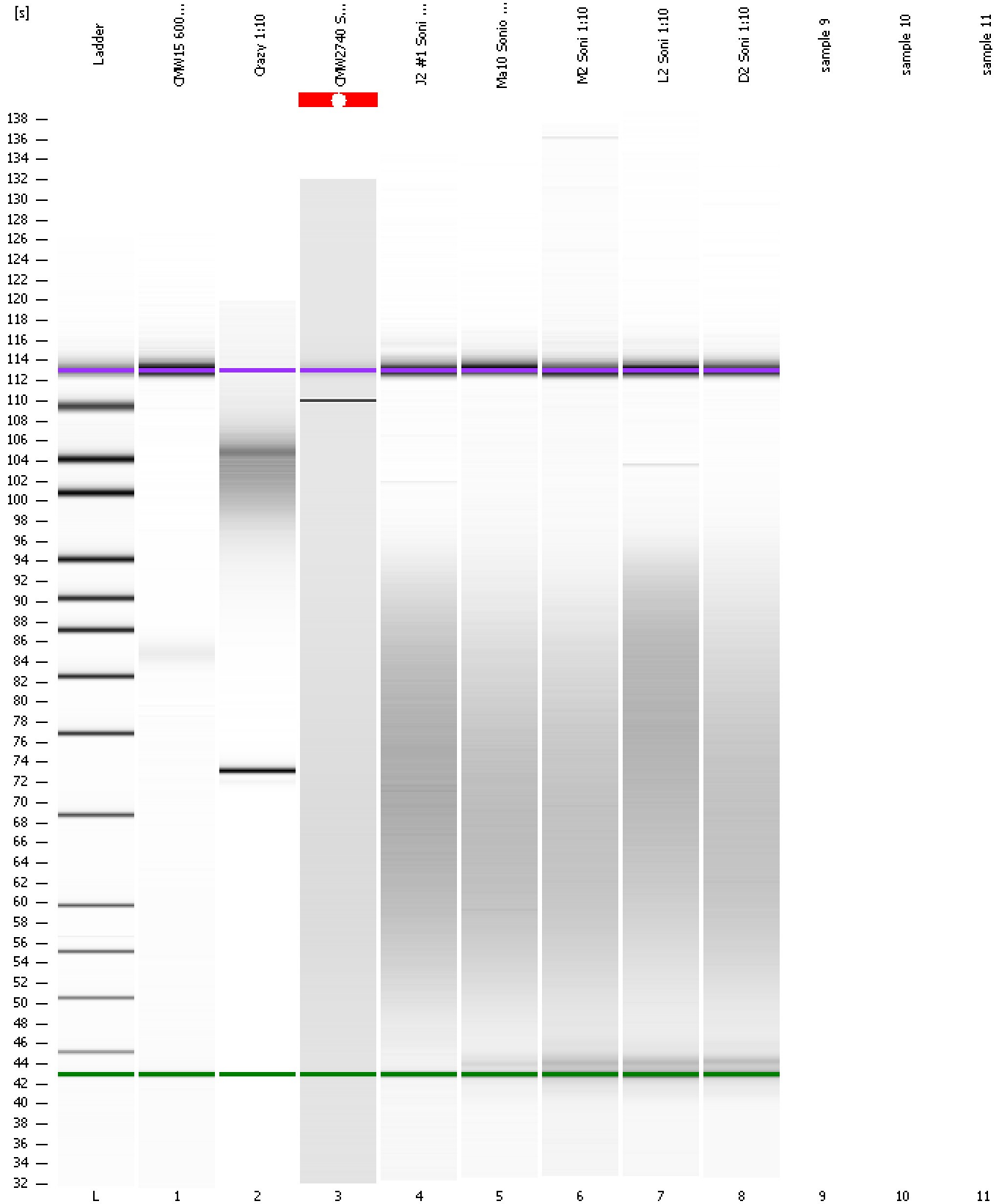
... Region table for sample 8 : D2 Soni 1:10

From [s]	To [s]	Average Size [bp]	Molarity [pmol/l]	Conc. [pg/μl]	Corr. Area % of Total	Size distribution in CV [%]	Color
52.38	94.19	350	6,769.0	1,157.69	979.4	84	45.9

Assay Class: High Sensitivity DNA Assay
Data Path: C:\...ents and Settings\Bioanalyzer\2012-06-04\2012-06-04_004.xad

Created: 6/4/2012 1:32:43 PM
Modified: 6/4/2012 2:13:33 PM

Gel Image



Assay Class: High Sensitivity DNA Assay
Data Path: C:\...ents and Settings\Bioanalyzer\2012-06-04\2012-06-04_004.xad

Created: 6/4/2012 1:32:43 PM
Modified: 6/4/2012 2:13:33 PM

Invalid Samples

Sample 9 has not been run, no results available.

Sample 10 has not been run, no results available.

Sample 11 has not been run, no results available.

Assay Class: High Sensitivity DNA Assay
 Data Path: C:\...ents and Settings\Bioanalyzer\2012-06-04\2012-06-04_004.xad

Created: 6/4/2012 1:32:43 PM
 Modified: 6/4/2012 2:13:33 PM

Run Logbook

Description	Number	Source	Category	Sub Category	Time	Time Zone	User	Host
Run ended on port 1 (Number of wells acquired: 9)		Instrument	Run		6/4/2012 2:05:28 PM	(GMT --07:00) Pacific Standard Time	UC Davis	D8XSMGH1
Instrument error occurred on port 1, Optical signal too high (1605h)	559	Instrument	Run	Sample 3	6/4/2012 1:50:51 PM	(GMT --07:00) Pacific Standard Time	UC Davis	D8XSMGH1
Run started on port 1 (File: C:\Documents and Settings\Bioanalyzer\2012-06-04\2012-06-04_004.xad)		Instrument	Run		6/4/2012 1:32:49 PM	(GMT --07:00) Pacific Standard Time	UC Davis	D8XSMGH1
Product Number : G2938B		Instrument	Run		6/4/2012 1:32:49 PM	(GMT --07:00) Pacific Standard Time	UC Davis	D8XSMGH1
Name :		Instrument	Run		6/4/2012 1:32:49 PM	(GMT --07:00) Pacific Standard Time	UC Davis	D8XSMGH1
Vendor : Agilent Technologies		Instrument	Run		6/4/2012 1:32:49 PM	(GMT --07:00) Pacific Standard Time	UC Davis	D8XSMGH1
Serial# : DE13701086		Instrument	Run		6/4/2012 1:32:49 PM	(GMT --07:00) Pacific Standard Time	UC Davis	D8XSMGH1
Firmware : C.01.069		Instrument	Run		6/4/2012 1:32:49 PM	(GMT --07:00) Pacific Standard Time	UC Davis	D8XSMGH1
Cartridge : Electrode		Instrument	Run		6/4/2012 1:32:49 PM	(GMT --07:00) Pacific Standard Time	UC Davis	D8XSMGH1