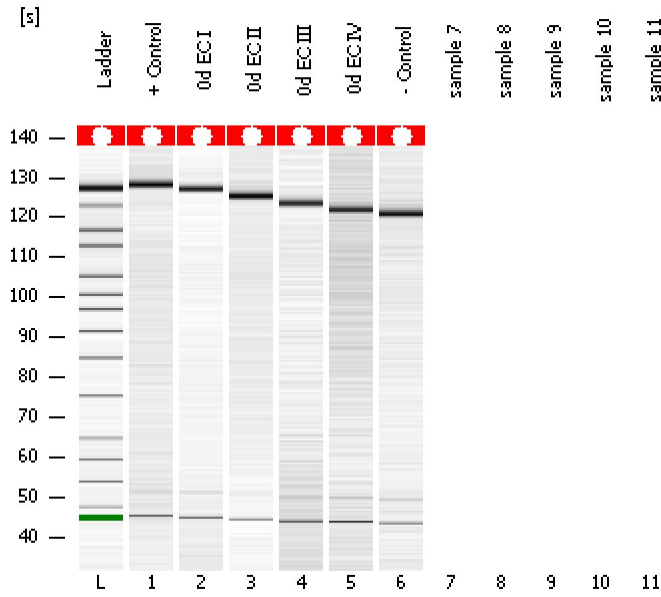


Assay Class: High Sensitivity DNA Assay
Data Path: C:\...ents and Settings\Bioanalyzer\2012-06-04\2012-06-04_005.xad

Created: 6/4/2012 3:15:15 PM
Modified: 6/4/2012 3:42:19 PM

Electrophoresis File Run Summary



Instrument Information:

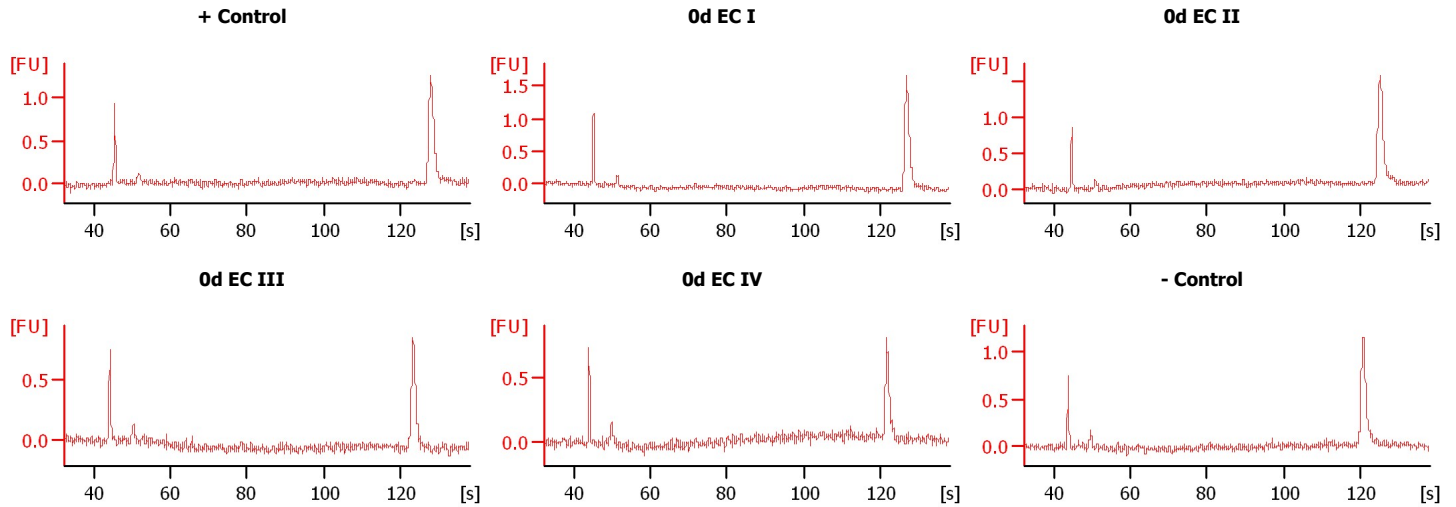
Instrument Name: DE13701086 Firmware: C.01.069
Serial#: DE13701086 Type: G2938B

Assay Information:

Assay Origin Path: C:\Program Files\Agilent\2100 bioanalyzer\2100 expert\assays\dsDNA\High Sensitivity DNA.xsy
Assay Class: High Sensitivity DNA Assay
Version: 1.03
Assay Comments: Copyright © 2003-2010 Agilent Technologies

Chip Information:

Chip Lot #:
Reagent Kit Lot #:
Chip Comments:



Assay Class: High Sensitivity DNA Assay
 Data Path: C:\...ents and Settings\Bioanalyzer\2012-06-04\2012-06-04_005.xad

Created: 6/4/2012 3:15:15 PM
 Modified: 6/4/2012 3:42:19 PM

Electrophoresis File Run Summary (Chip Summary)

| Sample Name | Sample Comment | Rest. Digest | Status | Observation | Result Label | Result Color |
|-------------|----------------|--------------------------|--------|-------------|--------------|--------------|
| + Control | | <input type="checkbox"/> | ✓ | | | |
| 0d EC I | | <input type="checkbox"/> | ✓ | | | |
| 0d EC II | | <input type="checkbox"/> | ✓ | | | |
| 0d EC III | | <input type="checkbox"/> | ✓ | | | |
| 0d EC IV | | <input type="checkbox"/> | ✓ | | | |
| - Control | | <input type="checkbox"/> | ✓ | | | |
| sample 7 | | <input type="checkbox"/> | | | | |
| sample 8 | | <input type="checkbox"/> | | | | |
| sample 9 | | <input type="checkbox"/> | | | | |
| sample 10 | | <input type="checkbox"/> | | | | |
| sample 11 | | <input type="checkbox"/> | | | | |
| Ladder | | <input type="checkbox"/> | ✓ | | | |

Chip Lot #

Reagent Kit Lot #

Chip Comments :

Assay Class: High Sensitivity DNA Assay
Data Path: C:\...ents and Settings\Bioanalyzer\2012-06-04\2012-06-04_005.xad

Created: 6/4/2012 3:15:15 PM
Modified: 6/4/2012 3:42:19 PM

Electrophoresis Assay Details

General Analysis Settings

Number of Available Sample and Ladder Wells (Max.) : 12
Minimum Visible Range [s] : 32
Maximum Visible Range [s] : 138
Start Analysis Time Range [s] : 33
End Analysis Time Range [s] : 137.5
Ladder Concentration [pg/μl] : 1950
Uses Standard Area for Ladder Fragments
Lower Marker Concentration [pg/μl] : 125
Upper Marker Concentration [pg/μl] : 75
Used Upper Marker for Quantitation
Standard Curve Fit is Point to Point
Show Data Aligned to Lower and Upper Marker

Integrator Settings

Integration Start Time [s] : 33.05
Integration End Time [s] : 137
Slope Threshold : 0.8
Height Threshold [FU] : 5
Area Threshold : 0.1
Width Threshold [s] : 0.6
Baseline Plateau [s] : 0.5

Filter Settings

Filter Width [s] : 0.5
Polynomial Order : 4

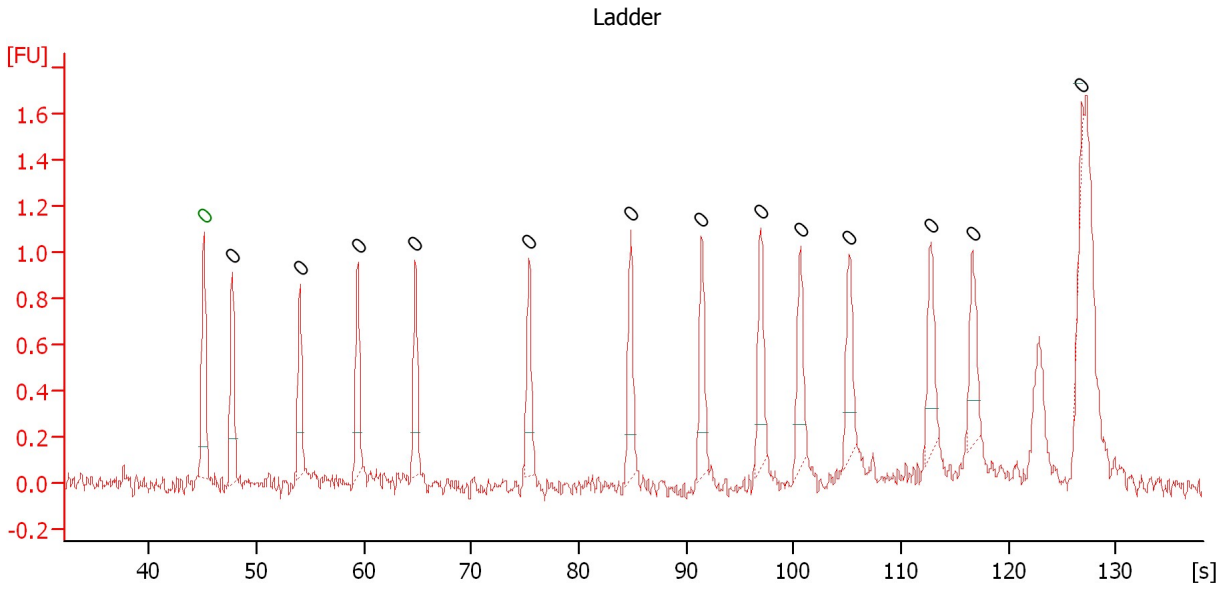
Ladder

| Ladder Peak | Size | Area |
|-------------|-------|------|
| 1 | 35 | 160 |
| 2 | 50 | 210 |
| 3 | 100 | 208 |
| 4 | 150 | 221 |
| 5 | 200 | 242 |
| 6 | 300 | 270 |
| 7 | 400 | 305 |
| 8 | 500 | 306 |
| 9 | 600 | 336 |
| 10 | 700 | 321 |
| 11 | 1000 | 366 |
| 12 | 2000 | 413 |
| 13 | 3000 | 411 |
| 14 | 7000 | 400 |
| 15 | 10380 | 214 |

Assay Class: High Sensitivity DNA Assay
 Data Path: C:\...ents and Settings\Bioanalyzer\2012-06-04\2012-06-04_005.xad

Created: 6/4/2012 3:15:15 PM
 Modified: 6/4/2012 3:42:19 PM

Electropherogram Summary



Overall Results for Ladder

Noise: 0.0

Peak table for Ladder

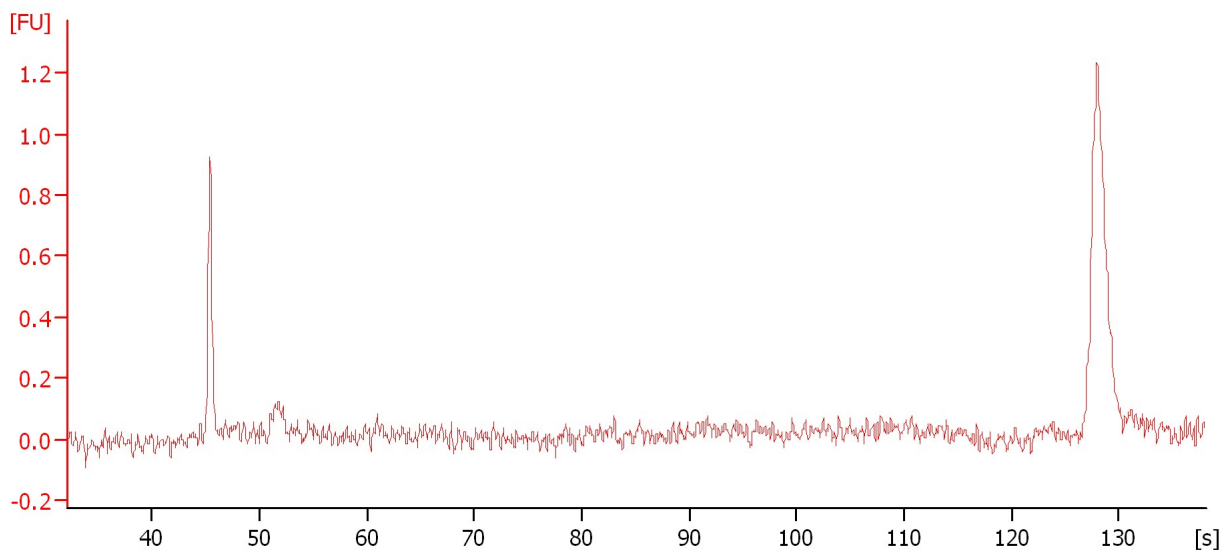
| Peak | Size [bp] | Conc. [pg/μl] | Molarity [pmol/l] | Observations |
|------|-----------|---------------|-------------------|--------------|
| 1 | 0 | 0.00 | 0.0 | Lower Marker |
| 2 | 0 | 0.00 | 0.0 | Ladder Peak |
| 3 | 0 | 0.00 | 0.0 | Ladder Peak |
| 4 | 0 | 0.00 | 0.0 | Ladder Peak |
| 5 | 0 | 0.00 | 0.0 | Ladder Peak |
| 6 | 0 | 0.00 | 0.0 | Ladder Peak |
| 7 | 0 | 0.00 | 0.0 | Ladder Peak |
| 8 | 0 | 0.00 | 0.0 | Ladder Peak |
| 9 | 0 | 0.00 | 0.0 | Ladder Peak |
| 10 | 0 | 0.00 | 0.0 | Ladder Peak |
| 11 | 0 | 0.00 | 0.0 | Ladder Peak |
| 12 | 0 | 0.00 | 0.0 | Ladder Peak |
| 13 | 0 | 0.00 | 0.0 | Ladder Peak |
| 14 | 0 | 0.00 | 0.0 | Ladder Peak |

Assay Class: High Sensitivity DNA Assay
Data Path: C:\...ents and Settings\Bioanalyzer\2012-06-04\2012-06-04_005.xad

Created: 6/4/2012 3:15:15 PM
Modified: 6/4/2012 3:42:19 PM

Electropherogram Summary Continued ...

+ Control



Overall Results for sample 1 : + Control

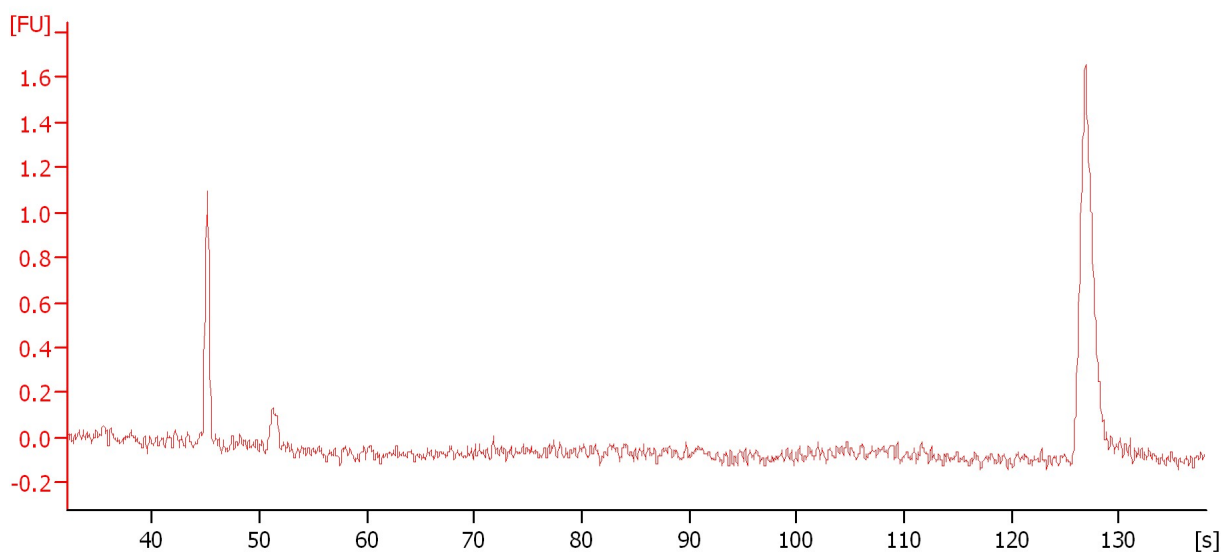
Noise: 0.0

Assay Class: High Sensitivity DNA Assay
Data Path: C:\...ents and Settings\Bioanalyzer\2012-06-04\2012-06-04_005.xad

Created: 6/4/2012 3:15:15 PM
Modified: 6/4/2012 3:42:19 PM

Electropherogram Summary Continued ...

0d EC I



Overall Results for sample 2 : 0d EC I

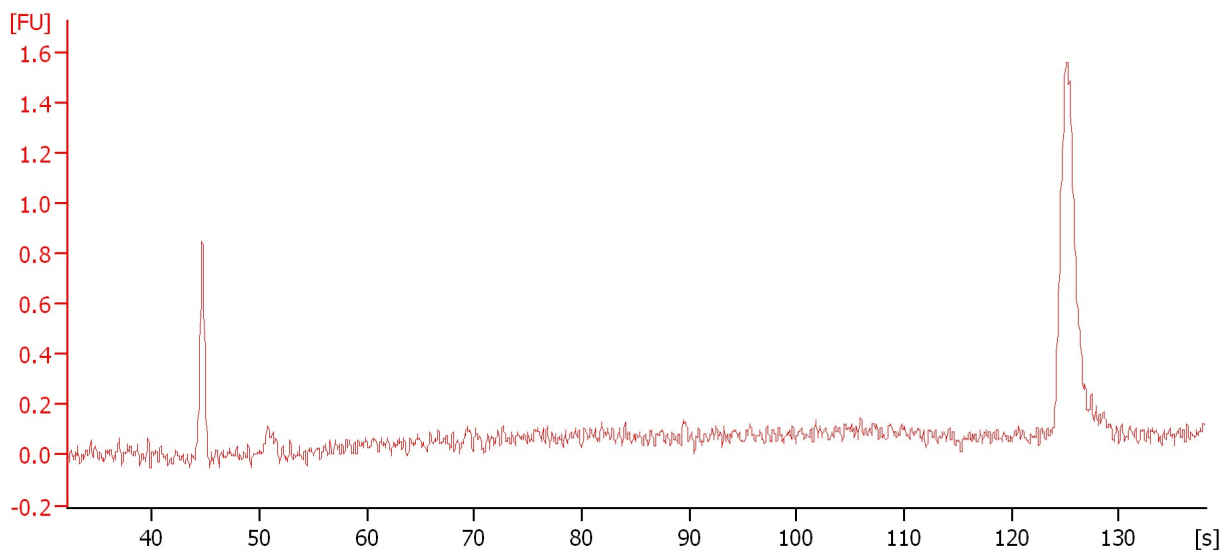
Noise: 0.0

Assay Class: High Sensitivity DNA Assay
Data Path: C:\...ents and Settings\Bioanalyzer\2012-06-04\2012-06-04_005.xad

Created: 6/4/2012 3:15:15 PM
Modified: 6/4/2012 3:42:19 PM

Electropherogram Summary Continued ...

0d EC II



Overall Results for sample 3 : 0d EC II

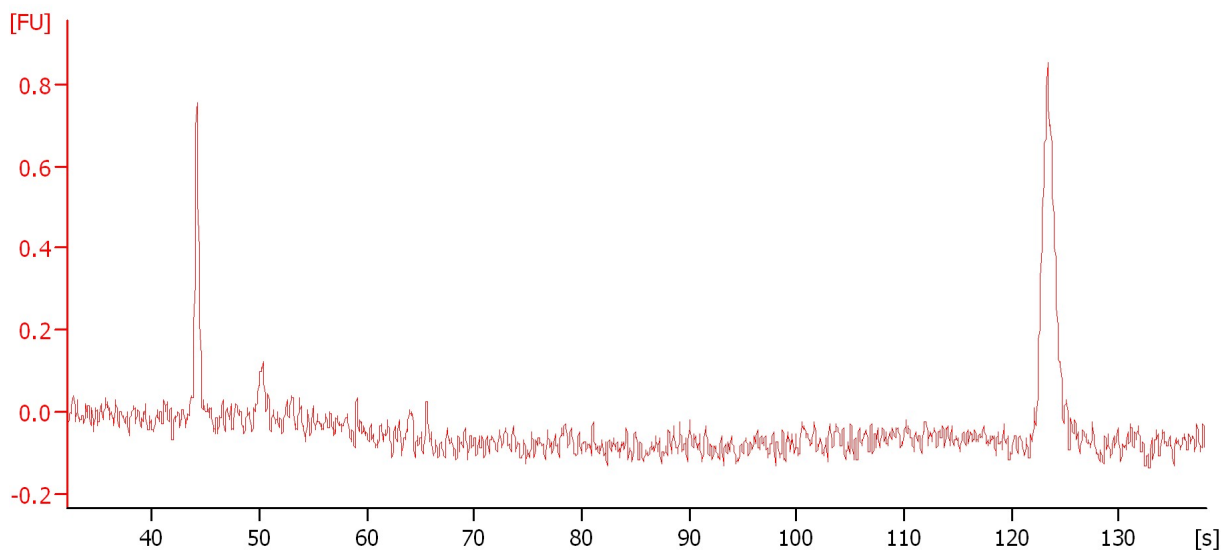
Noise: 0.0

Assay Class: High Sensitivity DNA Assay
Data Path: C:\...ents and Settings\Bioanalyzer\2012-06-04\2012-06-04_005.xad

Created: 6/4/2012 3:15:15 PM
Modified: 6/4/2012 3:42:19 PM

Electropherogram Summary Continued ...

0d EC III



Overall Results for sample 4 : 0d EC III

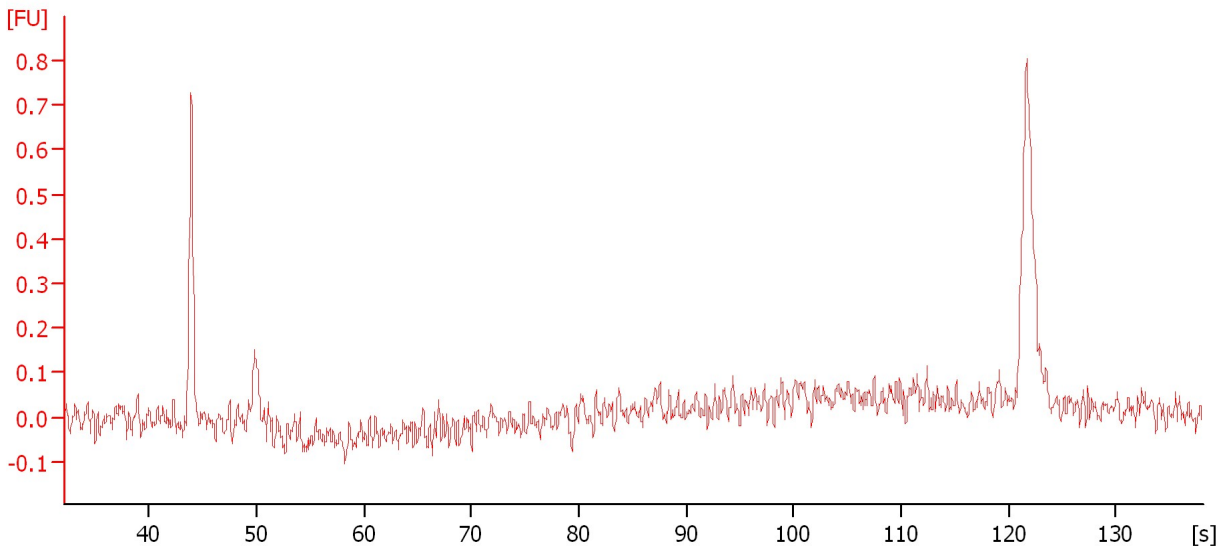
Noise: 0.0

Assay Class: High Sensitivity DNA Assay
Data Path: C:\...ents and Settings\Bioanalyzer\2012-06-04\2012-06-04_005.xad

Created: 6/4/2012 3:15:15 PM
Modified: 6/4/2012 3:42:19 PM

Electropherogram Summary Continued ...

0d EC IV



Overall Results for sample 5 : 0d EC IV

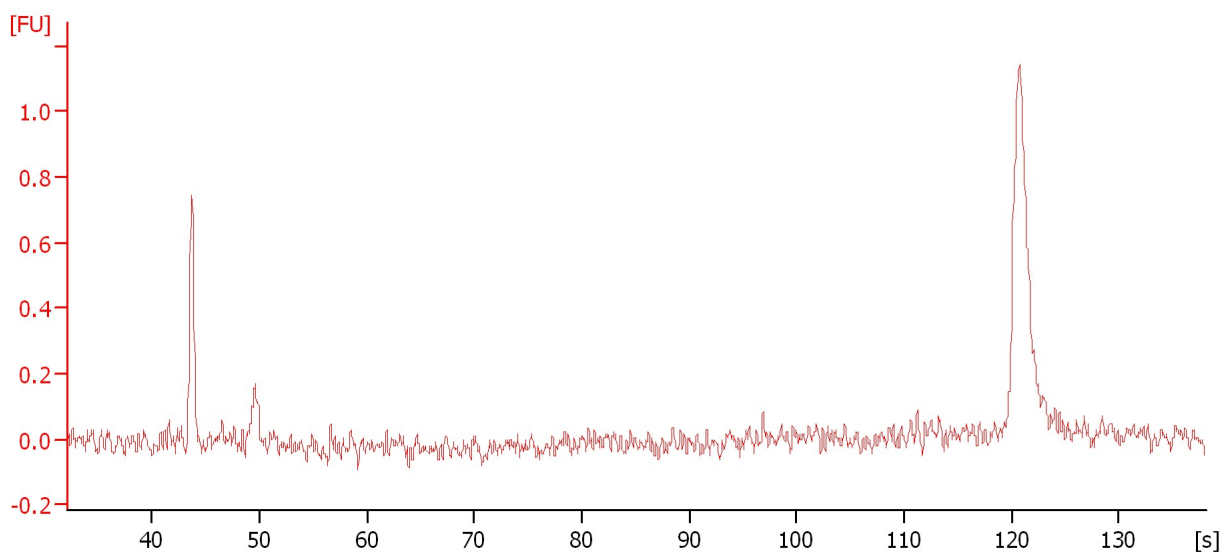
Noise: 0.0

Assay Class: High Sensitivity DNA Assay
Data Path: C:\...ents and Settings\Bioanalyzer\2012-06-04\2012-06-04_005.xad

Created: 6/4/2012 3:15:15 PM
Modified: 6/4/2012 3:42:19 PM

Electropherogram Summary Continued ...

- Control



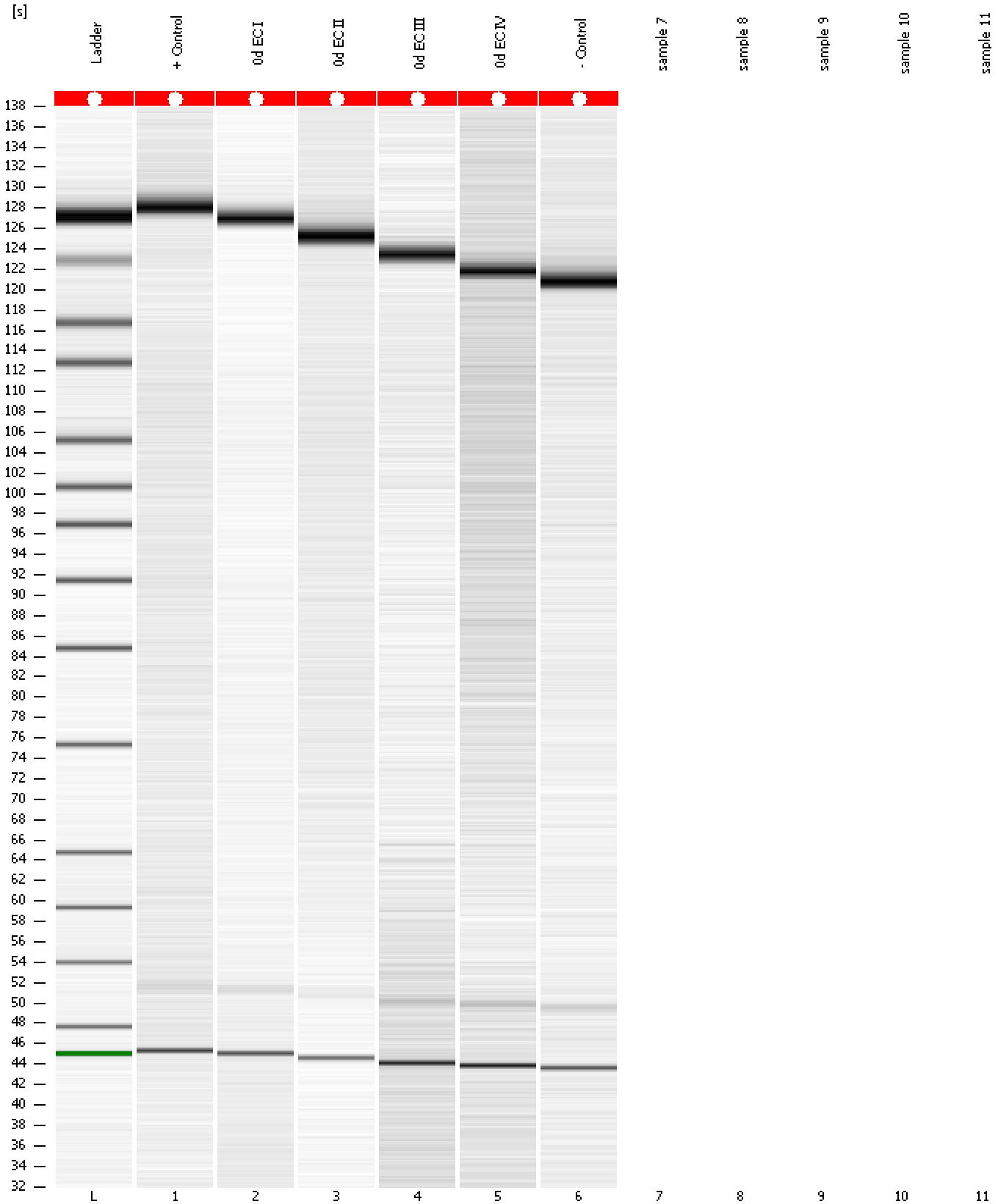
Overall Results for sample 6 : - Control

Noise: 0.0

Assay Class: High Sensitivity DNA Assay
Data Path: C:\...ents and Settings\Bioanalyzer\2012-06-04\2012-06-04_005.xad

Created: 6/4/2012 3:15:15 PM
Modified: 6/4/2012 3:42:19 PM

Gel Image



Assay Class: High Sensitivity DNA Assay
Data Path: C:\...ents and Settings\Bioanalyzer\2012-06-04\2012-06-04_005.xad

Created: 6/4/2012 3:15:15 PM
Modified: 6/4/2012 3:42:19 PM

Invalid Samples

Sample 7 has not been run, no results available.

Sample 8 has not been run, no results available.

Sample 9 has not been run, no results available.

Sample 10 has not been run, no results available.

Sample 11 has not been run, no results available.

Assay Class: High Sensitivity DNA Assay
 Data Path: C:\...ents and Settings\Bioanalyzer\2012-06-04\2012-06-04_005.xad

Created: 6/4/2012 3:15:15 PM
 Modified: 6/4/2012 3:42:19 PM

Run Logbook

| Description | Number | Source | Category | Sub Category | Time | Time Zone | User | Host |
|---|--------|------------|----------|--------------|---------------------|-------------------------------------|----------|----------|
| Run ended on port 1 (Number of wells acquired: 7) | | Instrument | Run | | 6/4/2012 3:42:16 PM | (GMT --07:00) Pacific Standard Time | UC Davis | D8XSMGH1 |
| Run started on port 1 (File: C:\Documents and Settings\Bioanalyzer\2012-06-04\2012-06-04_005.xad) | | Instrument | Run | | 6/4/2012 3:15:20 PM | (GMT --07:00) Pacific Standard Time | UC Davis | D8XSMGH1 |
| Product Number : G2938B | | Instrument | Run | | 6/4/2012 3:15:20 PM | (GMT --07:00) Pacific Standard Time | UC Davis | D8XSMGH1 |
| Name : | | Instrument | Run | | 6/4/2012 3:15:20 PM | (GMT --07:00) Pacific Standard Time | UC Davis | D8XSMGH1 |
| Vendor : Agilent Technologies | | Instrument | Run | | 6/4/2012 3:15:20 PM | (GMT --07:00) Pacific Standard Time | UC Davis | D8XSMGH1 |
| Serial# : DE13701086 | | Instrument | Run | | 6/4/2012 3:15:20 PM | (GMT --07:00) Pacific Standard Time | UC Davis | D8XSMGH1 |
| Firmware : C.01.069 | | Instrument | Run | | 6/4/2012 3:15:20 PM | (GMT --07:00) Pacific Standard Time | UC Davis | D8XSMGH1 |
| Cartridge : Electrode | | Instrument | Run | | 6/4/2012 3:15:20 PM | (GMT --07:00) Pacific Standard Time | UC Davis | D8XSMGH1 |