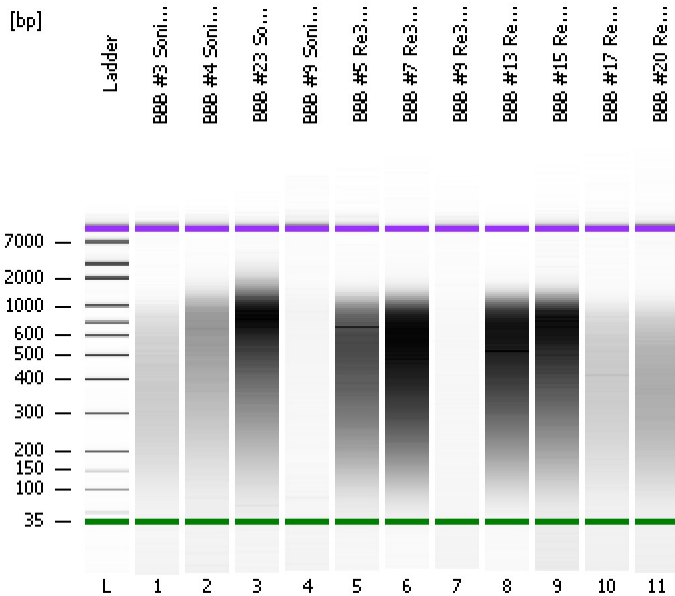


Assay Class: High Sensitivity DNA Assay  
Data Path: C:\...ents and Settings\Bioanalyzer\2012-06-05\2012-06-05\_002.xad

Created: 6/5/2012 11:41:43 AM  
Modified: 6/5/2012 12:26:35 PM

**Electrophoresis File Run Summary**



Instrument Information:

Instrument Name: DE13701086      Firmware: C.01.069  
Serial#: DE13701086      Type: G2938B

Assay Information:

Assay Origin Path: C:\Program Files\Agilent\2100 bioanalyzer\2100 expert\assays\dsDNA\High Sensitivity DNA.xsy  
Assay Class: High Sensitivity DNA Assay  
Version: 1.03  
Assay Comments: Copyright © 2003-2010 Agilent Technologies

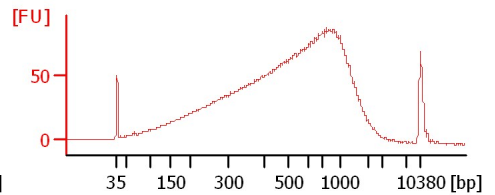
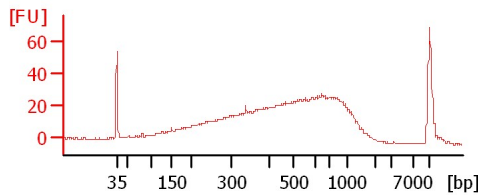
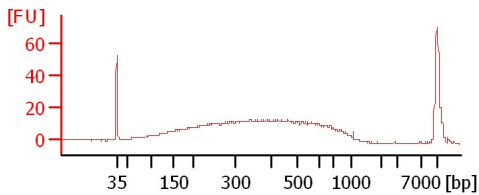
Chip Information:

Chip Lot #:   
Reagent Kit Lot #:   
Chip Comments:

**BBB #3 Soni 6/5/12**

**BBB #4 Soni 6/5/12**

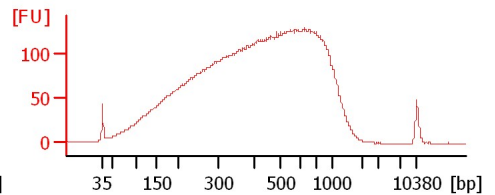
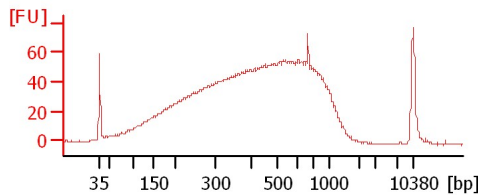
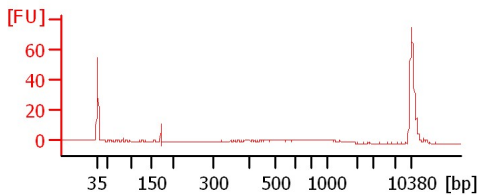
**BBB #23 Soni 6/5/12**



**BBB #9 Soni 6/5/12**

**BBB #5 Re3cylc 6/4/12**

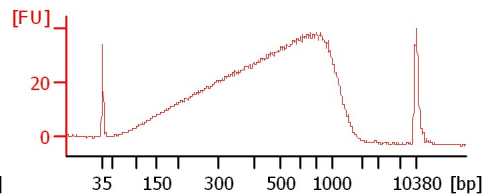
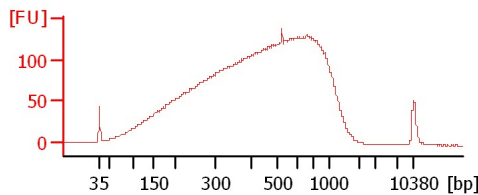
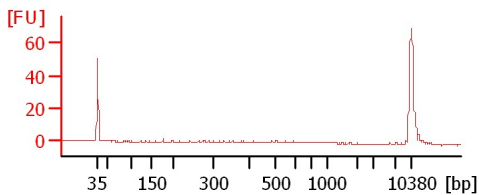
**BBB #7 Re3cylc 6/4/12**



**BBB #9 Re3cylc 6/4/12**

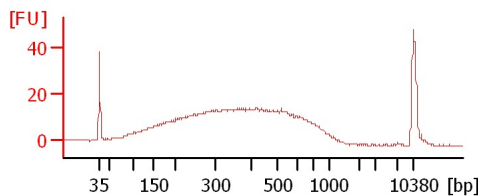
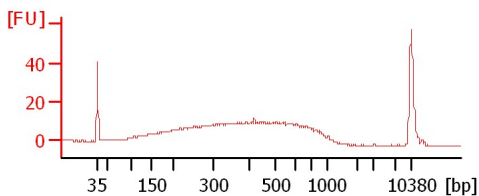
**BBB #13 Re3cylc 6/4/12**

**BBB #15 Re3cylc 6/4/12**



**BBB #17 Re3cylc 6/4/12**

**BBB #20 Re3cylc 6/4/12**



Assay Class: High Sensitivity DNA Assay  
 Data Path: C:\...ents and Settings\Bioanalyzer\2012-06-05\2012-06-05\_002.xad

Created: 6/5/2012 11:41:43 AM  
 Modified: 6/5/2012 12:26:35 PM

**Electrophoresis File Run Summary (Chip Summary)**

Sample Name	Sample Comment	Rest. Digest	Status	Observation	Result Label	Result Color
BBB #3 Soni 6/5/12		<input type="checkbox"/>	✓			
BBB #4 Soni 6/5/12		<input type="checkbox"/>	✓			
BBB #23 Soni 6/5/12		<input type="checkbox"/>	✓			
BBB #9 Soni 6/5/12		<input type="checkbox"/>	✓			
BBB #5 Re3cylc 6/4/12		<input type="checkbox"/>	✓			
BBB #7 Re3cylc 6/4/12		<input type="checkbox"/>	✓			
BBB #9 Re3cylc 6/4/12		<input type="checkbox"/>	✓			
BBB #13 Re3cylc 6/4/12		<input type="checkbox"/>	✓			
BBB #15 Re3cylc 6/4/12		<input type="checkbox"/>	✓			
BBB #17 Re3cylc 6/4/12		<input type="checkbox"/>	✓			
BBB #20 Re3cylc 6/4/12		<input type="checkbox"/>	✓			
Ladder		<input type="checkbox"/>	✓			

**Chip Lot #**

**Reagent Kit Lot #**

**Chip Comments :**

Assay Class: High Sensitivity DNA Assay  
Data Path: C:\...ents and Settings\Bioanalyzer\2012-06-05\2012-06-05\_002.xad

Created: 6/5/2012 11:41:43 AM  
Modified: 6/5/2012 12:26:35 PM

**Electrophoresis Assay Details**

**General Analysis Settings**

Number of Available Sample and Ladder Wells (Max.) : 12  
Minimum Visible Range [s] : 32  
Maximum Visible Range [s] : 138  
Start Analysis Time Range [s] : 33  
End Analysis Time Range [s] : 137.5  
Ladder Concentration [pg/μl] : 1950  
Uses Standard Area for Ladder Fragments  
Lower Marker Concentration [pg/μl] : 125  
Upper Marker Concentration [pg/μl] : 75  
Used Upper Marker for Quantitation  
Standard Curve Fit is Point to Point  
Show Data Aligned to Lower and Upper Marker

**Integrator Settings**

Integration Start Time [s] : 33.05  
Integration End Time [s] : 137  
Slope Threshold : 0.8  
Height Threshold [FU] : 5  
Area Threshold : 0.1  
Width Threshold [s] : 0.6  
Baseline Plateau [s] : 0.5

**Filter Settings**

Filter Width [s] : 0.5  
Polynomial Order : 4

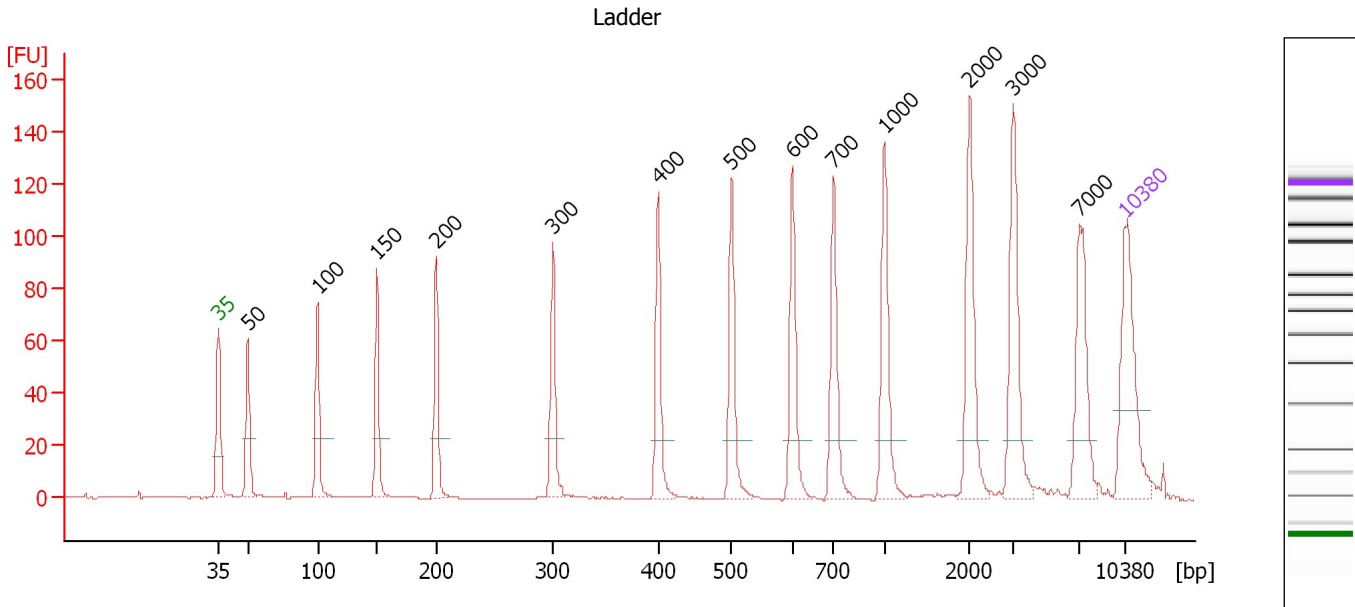
**Ladder**

Ladder Peak	Size	Area
1	35	160
2	50	210
3	100	208
4	150	221
5	200	242
6	300	270
7	400	305
8	500	306
9	600	336
10	700	321
11	1000	366
12	2000	413
13	3000	411
14	7000	400
15	10380	214

Assay Class: High Sensitivity DNA Assay  
 Data Path: C:\...ents and Settings\Bioanalyzer\2012-06-05\2012-06-05\_002.xad

Created: 6/5/2012 11:41:43 AM  
 Modified: 6/5/2012 12:26:35 PM

**Electropherogram Summary**



**Overall Results for Ladder**

Noise: 0.1

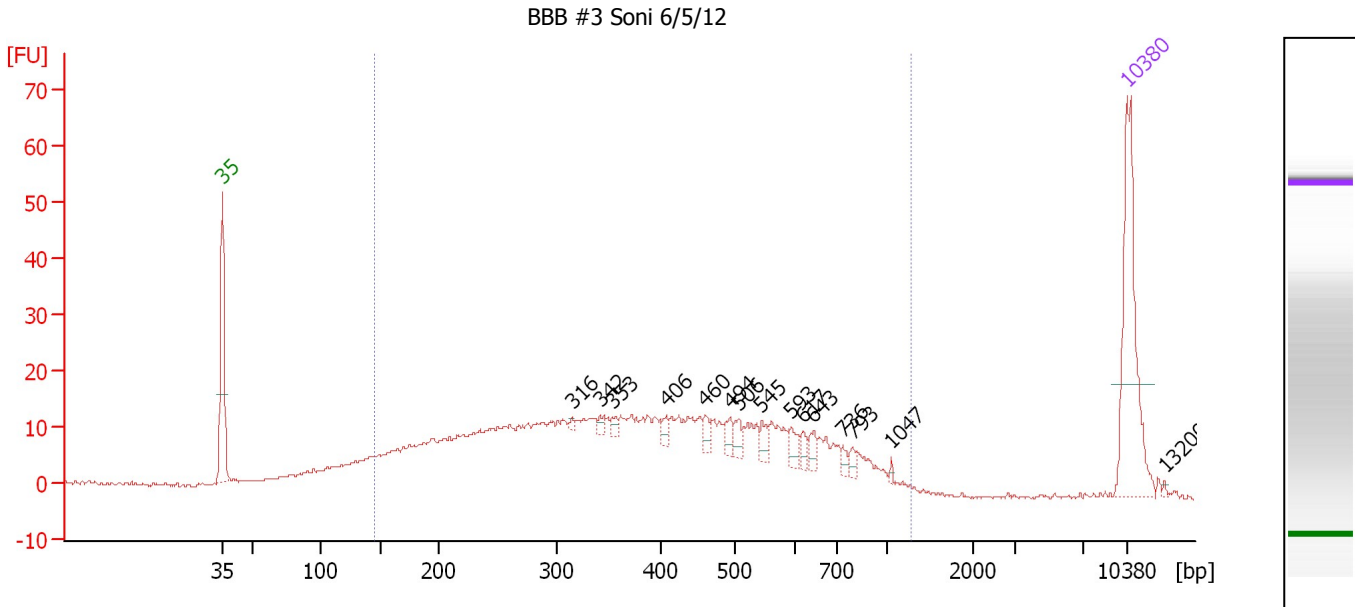
**Peak table for Ladder**

Peak	Size [bp]	Conc. [pg/μl]	Molarity [pmol/l]	Observations
1	35	125.00	5,411.3	Lower Marker
2	50	150.00	4,545.5	Ladder Peak
3	100	150.00	2,272.7	Ladder Peak
4	150	150.00	1,515.2	Ladder Peak
5	200	150.00	1,136.4	Ladder Peak
6	300	150.00	757.6	Ladder Peak
7	400	150.00	568.2	Ladder Peak
8	500	150.00	454.5	Ladder Peak
9	600	150.00	378.8	Ladder Peak
10	700	150.00	324.7	Ladder Peak
11	1,000	150.00	227.3	Ladder Peak
12	2,000	150.00	113.6	Ladder Peak
13	3,000	150.00	75.8	Ladder Peak
14	7,000	150.00	32.5	Ladder Peak
15	10,380	75.00	10.9	Upper Marker

Assay Class: High Sensitivity DNA Assay  
 Data Path: C:\...ents and Settings\Bioanalyzer\2012-06-05\2012-06-05\_002.xad

Created: 6/5/2012 11:41:43 AM  
 Modified: 6/5/2012 12:26:35 PM

**Electropherogram Summary Continued ...**



**Setpoint Deviations for sample 1 : BBB #3 Soni 6/5/12**

Height Threshold [FU] : 2

**Overall Results for sample 1 : BBB #3 Soni 6/5/12**

Number of peaks found: 15                      Corr. Area 1: 602.7  
 Noise: 0.2

**Peak table for sample 1 : BBB #3 Soni 6/5/12**

Peak	Size [bp]	Conc. [pg/μl]	Molarity [pmol/l]	Observations
1	35	125.00	5,411.3	Lower Marker
2	316	2.16	10.4	
3	342	4.26	18.9	
4	353	4.29	18.4	
5	406	6.65	24.8	
6	460	6.79	22.4	
7	494	8.53	26.2	
8	506	8.01	24.0	
9	545	7.80	21.7	
10	593	8.92	22.8	
11	617	5.72	14.0	
12	643	7.09	16.7	
13	736	4.15	8.6	
14	793	3.97	7.6	
15	1,047	1.53	2.2	
16	10,380	75.00	10.9	Upper Marker
17	13,200	0.00	0.0	

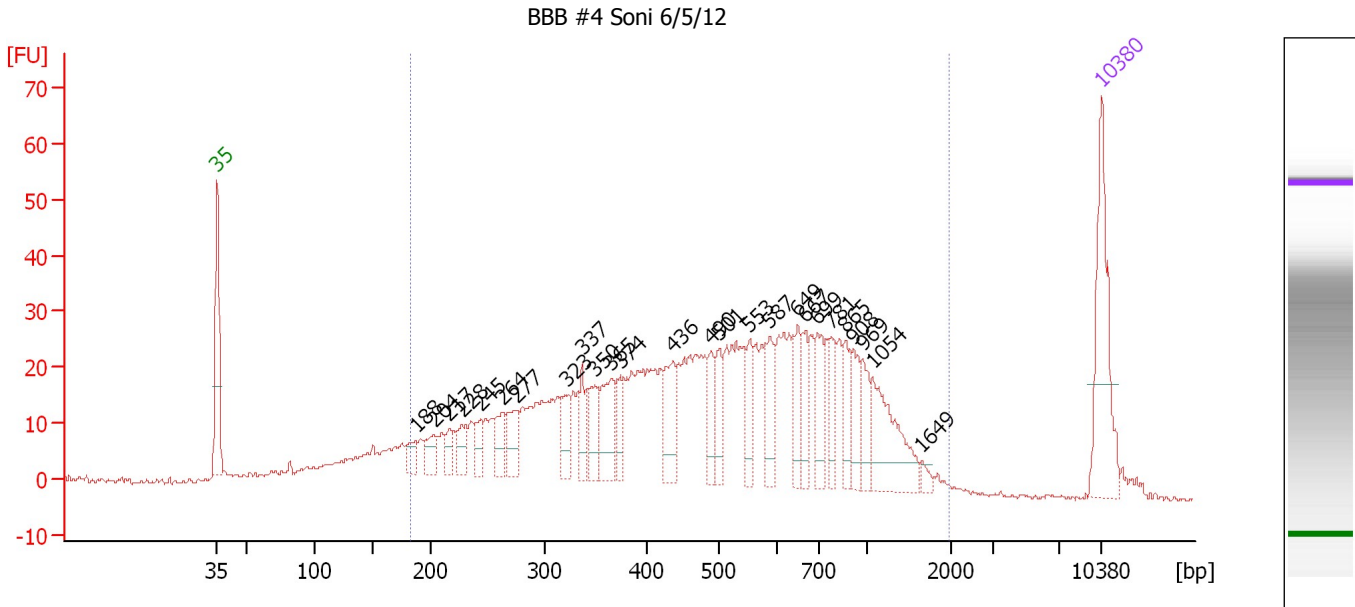
**Region table for sample 1 : BBB #3 Soni 6/5/12**

From [bp]	To [bp]	Average Size [bp]	Molarity [pmol/l]	Conc. [pg/μl]	Corr. Area	% of Total	Size distribution in CV [%]	Color
145	1,266	413	4,636.5	948.97	602.7	90	44.6	Blue

Assay Class: High Sensitivity DNA Assay  
 Data Path: C:\...ents and Settings\Bioanalyzer\2012-06-05\2012-06-05\_002.xad

Created: 6/5/2012 11:41:43 AM  
 Modified: 6/5/2012 12:26:35 PM

**Electropherogram Summary Continued ...**



**Overall Results for sample 2 : BBB #4 Soni 6/5/12**

Number of peaks found: 26                      Corr. Area 1: 1,031.8  
 Noise: 0.3

**Peak table for sample 2 : BBB #4 Soni 6/5/12**

Peak	Size [bp]	Conc. [pg/μl]	Molarity [pmol/l]	Observations
1	35	125.00	5,411.3	Lower Marker
2	188	17.59	141.9	
3	204	21.18	157.6	
4	217	15.19	106.0	
5	228	20.84	138.3	
6	245	17.79	110.2	
7	264	25.61	147.0	
8	277	33.61	184.2	
9	323	28.31	132.9	
10	337	22.87	102.8	
11	350	29.65	128.5	
12	365	50.16	208.5	
13	374	22.45	91.0	
14	436	41.47	144.0	
15	490	26.77	82.8	
16	501	28.81	87.1	
17	553	26.77	73.4	
18	587	33.49	86.5	
19	649	31.31	73.1	
20	667	25.23	57.3	
21	699	32.58	70.6	
22	781	25.27	49.0	
23	865	23.09	40.4	
24	908	24.13	40.3	
25	969	23.63	36.9	
26	1,054	67.84	97.5	


Assay Class: High Sensitivity DNA Assay  
Data Path: C:\...ents and Settings\Bioanalyzer\2012-06-05\2012-06-05\_002.xad

Created: 6/5/2012 11:41:43 AM  
Modified: 6/5/2012 12:26:35 PM

**Electropherogram Summary Continued ...****... Peak table for sample 2 : BBB #4 Soni 6/5/12**

Peak	Size [bp]	Conc. [pg/μl]	Molarity [pmol/l]	Observations
27	1,649	5.32	4.9	
28	 10,380	75.00	10.9	Upper Marker

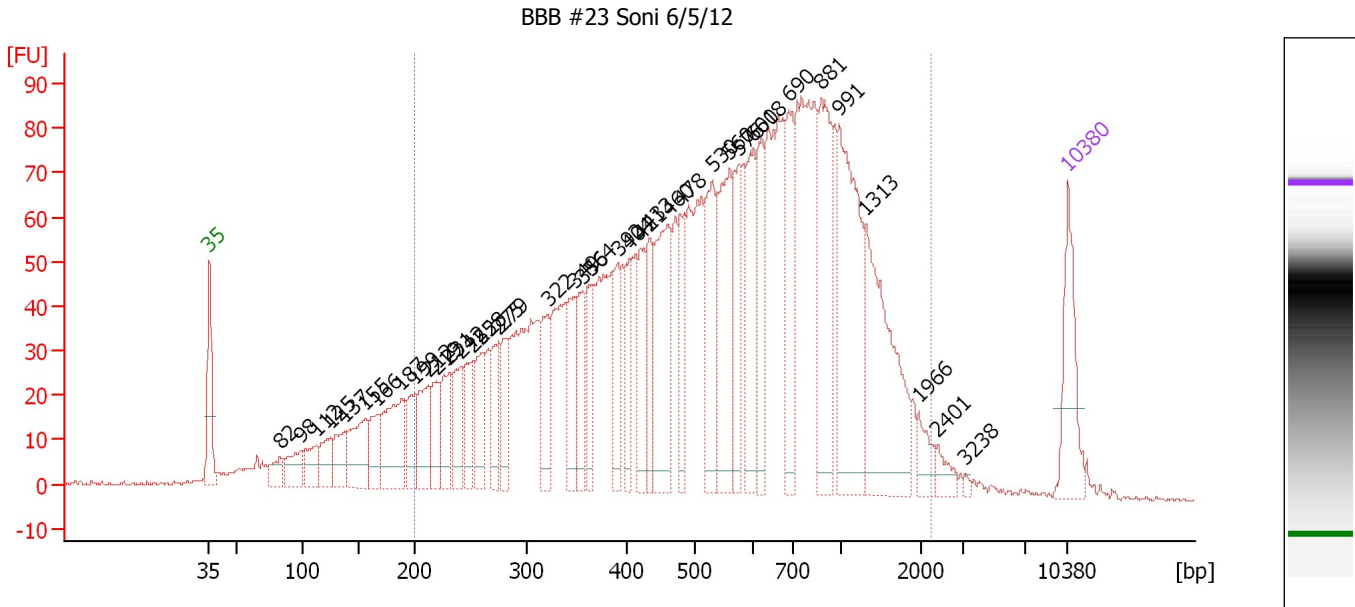
**Region table for sample 2 : BBB #4 Soni 6/5/12**

From [bp]	To [bp]	Average Size [bp]	Molarity [pmol/l]	Conc. [pg/μl]	Corr. Area	% of Total	Size distribution in CV [%]	Color
184	1,973	564	5,978.3	1,592.50	1,031.8	90	53.5	

Assay Class: High Sensitivity DNA Assay  
 Data Path: C:\...ents and Settings\Bioanalyzer\2012-06-05\2012-06-05\_002.xad

Created: 6/5/2012 11:41:43 AM  
 Modified: 6/5/2012 12:26:35 PM

**Electropherogram Summary Continued ...**



**Overall Results for sample 3 : BBB #23 Soni 6/5/12**

Number of peaks found: 39                      Corr. Area 1: 2,791.5  
 Noise: 0.4

**Peak table for sample 3 : BBB #23 Soni 6/5/12**

Peak	Size [bp]	Conc. [pg/μl]	Molarity [pmol/l]	Observations
1	35	125.00	5,411.3	Lower Marker
2	82	30.42	561.0	
3	98	52.15	807.3	
4	112	47.59	645.2	
5	125	48.33	587.8	
6	137	55.66	615.8	
7	155	95.91	937.5	
8	166	62.70	572.5	
9	187	124.09	1,003.6	
10	199	65.96	501.7	
11	212	75.04	537.0	
12	219	57.81	399.1	
13	231	73.82	485.2	
14	242	65.24	409.1	
15	252	66.95	403.0	
16	258	73.81	432.6	
17	275	60.49	333.4	
18	279	66.02	358.2	
19	322	77.39	364.4	
20	349	75.69	328.1	
21	356	72.24	307.6	
22	364	59.55	247.6	
23	392	61.20	236.5	
24	404	61.53	230.7	
25	421	78.33	281.9	
26	433	65.01	227.3	



Assay Class: High Sensitivity DNA Assay  
 Data Path: C:\...ents and Settings\Bioanalyzer\2012-06-05\2012-06-05\_002.xad

Created: 6/5/2012 11:41:43 AM  
 Modified: 6/5/2012 12:26:35 PM

**Electropherogram Summary Continued ...**

**... Peak table for sample 3 : BBB #23 Soni 6/5/12**

Peak	Size [bp]	Conc. [pg/μl]	Molarity [pmol/l]	Observations
27	460	172.98	569.5	
28	478	75.21	238.4	
29	530	121.07	346.1	
30	560	157.28	425.8	
31	576	88.10	231.6	
32	600	105.22	265.5	
33	618	86.07	211.0	
34	690	106.58	234.1	
35	881	159.68	274.5	
36	991	229.24	350.3	
37	1,313	198.42	229.0	
38	1,966	25.13	19.4	
39	2,401	17.14	10.8	
40	3,238	3.24	1.5	
41	10,380	75.00	10.9	Upper Marker

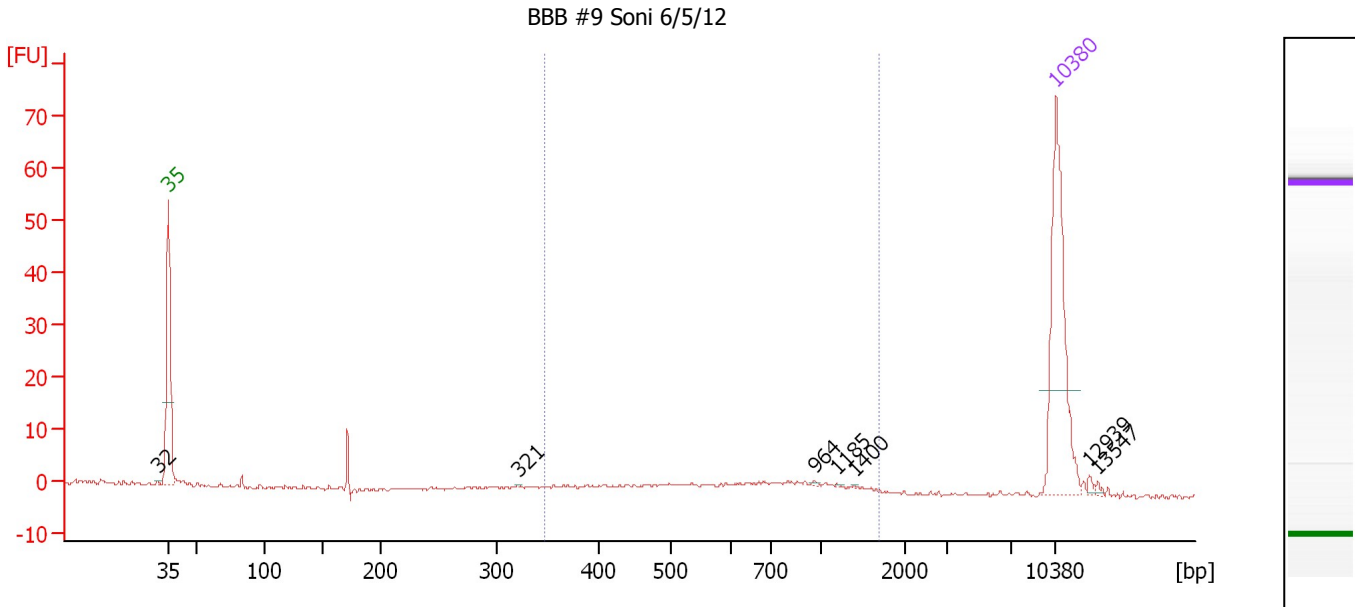
**Region table for sample 3 : BBB #23 Soni 6/5/12**

From [bp]	To [bp]	Average Size [bp]	Molarity [pmol/l]	Conc. [pg/μl]	Corr. Area	% of Total	Size distribution in CV [%]	Color
200	2,244	650	14,577.9	4,270.83	2,791.5	88	58.2	<span style="color: blue;">■</span>

Assay Class: High Sensitivity DNA Assay  
 Data Path: C:\...ents and Settings\Bioanalyzer\2012-06-05\2012-06-05\_002.xad

Created: 6/5/2012 11:41:43 AM  
 Modified: 6/5/2012 12:26:35 PM

**Electropherogram Summary Continued ...**



**Setpoint Deviations for sample 4 : BBB #9 Soni 6/5/12**

Height Threshold [FU] : 0.6

**Overall Results for sample 4 : BBB #9 Soni 6/5/12**

Number of peaks found: 7                      Corr. Area 1: 29.0  
 Noise: 0.3

**Peak table for sample 4 : BBB #9 Soni 6/5/12**

Peak	Size [bp]	Conc. [pg/μl]	Molarity [pmol/l]	Observations
1	32	0.00	0.0	
2	35	125.00	5,411.3	Lower Marker
3	321	0.37	1.8	
4	964	0.46	0.7	
5	1,185	0.33	0.4	
6	1,400	0.19	0.2	
7	10,380	75.00	10.9	Upper Marker
8	12,939	0.00	0.0	
9	13,547	0.00	0.0	

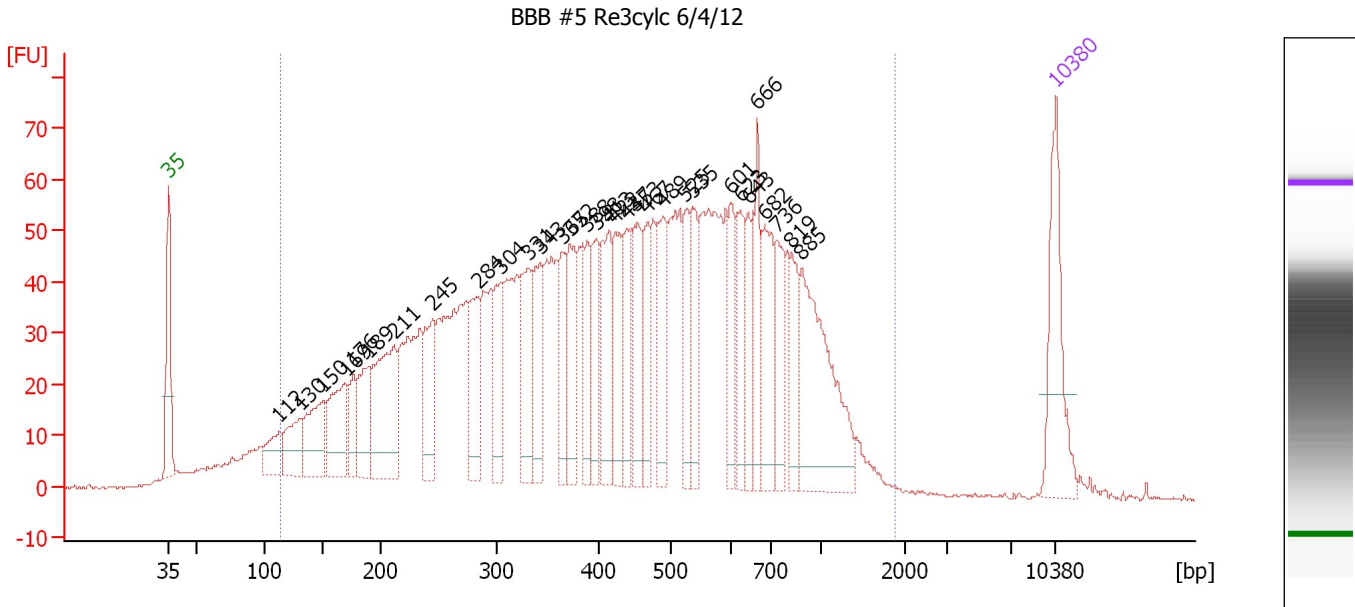
**Region table for sample 4 : BBB #9 Soni 6/5/12**

From [bp]	To [bp]	Average Size [bp]	Molarity [pmol/l]	Conc. [pg/μl]	Corr. Area	% of Total	Size distribution in CV [%]	Color
347	1,695	748	86.2	35.41	29.0	72	40.2	Blue

Assay Class: High Sensitivity DNA Assay  
 Data Path: C:\...ents and Settings\Bioanalyzer\2012-06-05\2012-06-05\_002.xad

Created: 6/5/2012 11:41:43 AM  
 Modified: 6/5/2012 12:26:35 PM

**Electropherogram Summary Continued ...**



**Overall Results for sample 5 : BBB #5 Re3cylc 6/4/12**

Number of peaks found: 32                      Corr. Area 1: 2,442.8  
 Noise: 0.3

**Peak table for sample 5 : BBB #5 Re3cylc 6/4/12**

Peak	Size [bp]	Conc. [pg/μl]	Molarity [pmol/l]	Observations
1	35	125.00	5,411.3	Lower Marker
2	112	42.12	570.2	
3	130	56.95	662.8	
4	150	79.59	804.2	
5	169	88.90	796.2	
6	176	36.12	311.6	
7	189	66.24	529.9	
8	211	145.09	1,043.0	
9	245	78.41	485.3	
10	284	76.53	407.8	
11	304	70.78	352.5	
12	331	82.77	378.5	
13	343	70.70	312.4	
14	365	55.39	229.9	
15	372	71.87	293.0	
16	388	51.01	199.0	
17	398	58.32	222.2	
18	413	81.65	299.2	
19	422	66.64	239.1	
20	437	51.16	177.2	
21	453	71.12	238.0	
22	467	50.98	165.4	
23	489	71.25	220.6	
24	525	50.86	146.8	
25	535	57.70	163.3	
26	601	46.07	116.1	

Assay Class: High Sensitivity DNA Assay  
 Data Path: C:\...ents and Settings\Bioanalyzer\2012-06-05\2012-06-05\_002.xad


Created: 6/5/2012 11:41:43 AM  
 Modified: 6/5/2012 12:26:35 PM

### Electropherogram Summary Continued ...

#### ... Peak table for sample 5 : BBB #5 Re3cylc 6/4/12

Peak	Size [bp]	Conc. [pg/μl]	Molarity [pmol/l]	Observations
27	623	52.37	127.3	
28	643	52.03	122.6	
29	666	53.25	121.2	
30	682	72.11	160.1	
31	736	55.29	113.8	
32	819	46.40	85.8	
33	885	157.65	269.9	
34	▶ 10,380	75.00	10.9	Upper Marker

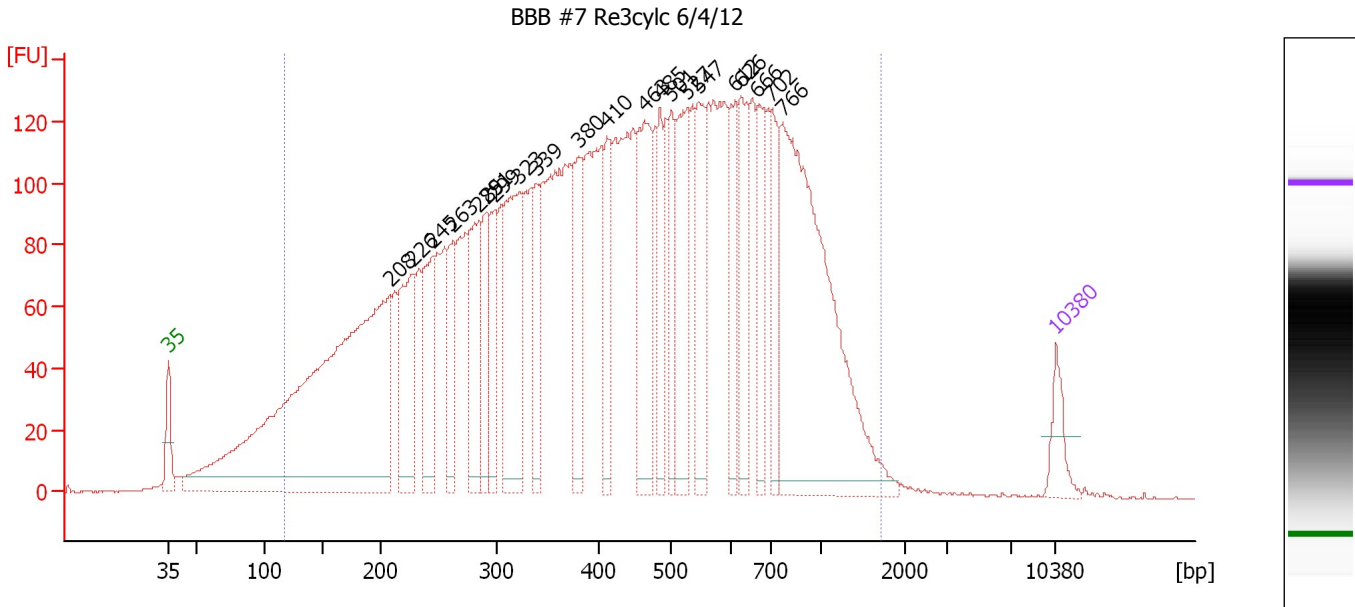
#### Region table for sample 5 : BBB #5 Re3cylc 6/4/12

From [bp]	To [bp]	Average Size [bp]	Molarity [pmol/l]	Conc. [pg/μl]	Corr. Area	% of Total	Size distribution in CV [%]	Color
114	1,888	479	16,313.5	3,459.52	2,442.8	95	53.3	

Assay Class: High Sensitivity DNA Assay  
 Data Path: C:\...ents and Settings\Bioanalyzer\2012-06-05\2012-06-05\_002.xad

Created: 6/5/2012 11:41:43 AM  
 Modified: 6/5/2012 12:26:35 PM

**Electropherogram Summary Continued ...**



**Overall Results for sample 6 : BBB #7 Re3cylc 6/4/12**

Number of peaks found: 21                      Corr. Area 1: 5,654.6  
 Noise: 0.2

**Peak table for sample 6 : BBB #7 Re3cylc 6/4/12**

Peak	Size [bp]	Conc. [pg/μl]	Molarity [pmol/l]	Observations
1	35	125.00	5,411.3	Lower Marker
2	208	2,501.20	18,261.8	
3	226	442.34	2,959.7	
4	245	306.26	1,891.2	
5	263	206.34	1,189.9	
6	285	338.63	1,798.7	
7	291	247.54	1,287.1	
8	299	230.50	1,169.8	
9	323	554.19	2,601.9	
10	339	212.12	947.7	
11	380	289.88	1,156.3	
12	410	225.51	833.1	
13	463	434.68	1,421.7	
14	485	209.55	654.2	
15	501	209.16	632.5	
16	527	374.18	1,076.7	
17	547	278.10	770.0	
18	612	229.33	567.9	
19	626	260.43	630.1	
20	666	214.81	488.4	
21	702	195.16	421.1	
22	766	1,294.91	2,561.8	
23	10,380	75.00	10.9	Upper Marker

Assay Class: High Sensitivity DNA Assay  
Data Path: C:\...ents and Settings\Bioanalyzer\2012-06-05\2012-06-05\_002.xad

Created: 6/5/2012 11:41:43 AM  
Modified: 6/5/2012 12:26:35 PM

**Electropherogram Summary Continued ...**

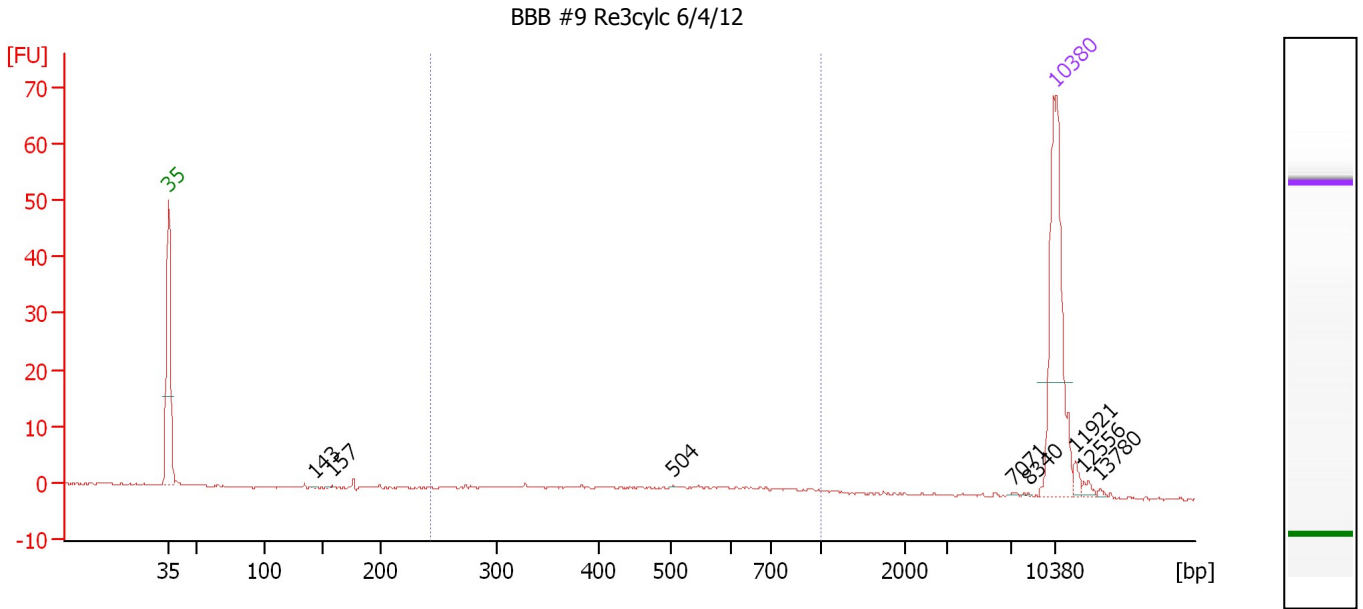
... Region table for sample 6 : BBB #7 Re3cylc 6/4/12

From [bp]	To [bp]	Average Size [bp]	Molarity [pmol/l]	Conc. [pg/μl]	Corr. Area	% of Total	Size distribution in CV [%]	Color
116	1,718	484	65,177.8	13,801.49	5,654.6	95	53.7	■

Assay Class: High Sensitivity DNA Assay  
 Data Path: C:\...ents and Settings\Bioanalyzer\2012-06-05\2012-06-05\_002.xad

Created: 6/5/2012 11:41:43 AM  
 Modified: 6/5/2012 12:26:35 PM

**Electropherogram Summary Continued ...**



**Setpoint Deviations for sample 7 : BBB #9 Re3cylc 6/4/12**

Height Threshold [FU] : 0.2

**Overall Results for sample 7 : BBB #9 Re3cylc 6/4/12**

Number of peaks found: 8                      Corr. Area 1: 28.9  
 Noise: 0.2

**Peak table for sample 7 : BBB #9 Re3cylc 6/4/12**

Peak	Size [bp]	Conc. [pg/μl]	Molarity [pmol/l]	Observations
1	35	125.00	5,411.3	Lower Marker
2	143	0.43	4.5	
3	157	0.61	5.9	
4	504	0.20	0.6	
5	7,071	0.36	0.1	
6	8,340	0.23	0.0	
7	10,380	75.00	10.9	Upper Marker
8	11,921	0.00	0.0	
9	12,556	0.00	0.0	
10	13,780	0.00	0.0	

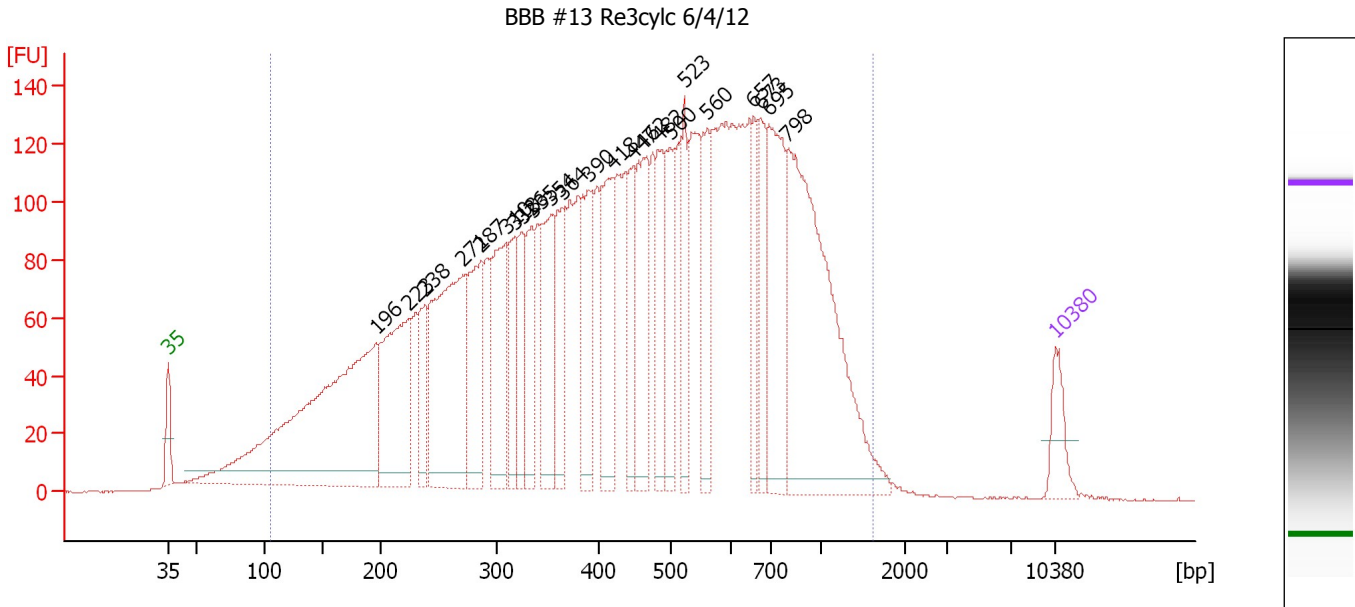
**Region table for sample 7 : BBB #9 Re3cylc 6/4/12**

From [bp]	To [bp]	Average Size [bp]	Molarity [pmol/l]	Conc. [pg/μl]	Corr. Area	% of Total	Size distribution in CV [%]	Color
243	1,000	519	148.0	42.64	28.9	60	34.9	Blue

Assay Class: High Sensitivity DNA Assay  
 Data Path: C:\...ents and Settings\Bioanalyzer\2012-06-05\2012-06-05\_002.xad

Created: 6/5/2012 11:41:43 AM  
 Modified: 6/5/2012 12:26:35 PM

**Electropherogram Summary Continued ...**



**Overall Results for sample 8 : BBB #13 Re3cylc 6/4/12**

Number of peaks found: 23                      Corr. Area 1: 5,344.8  
 Noise: 0.2

**Peak table for sample 8 : BBB #13 Re3cylc 6/4/12**

Peak	Size [bp]	Conc. [pg/μl]	Molarity [pmol/l]	Observations
1	35	125.00	5,411.3	Lower Marker
2	196	1,381.42	10,677.8	
3	223	522.42	3,541.8	
4	238	163.10	1,038.2	
5	271	709.71	3,964.1	
6	287	330.57	1,743.0	
7	310	340.49	1,666.5	
8	318	161.16	767.4	
9	326	186.67	868.5	
10	335	186.19	842.5	
11	354	272.06	1,165.2	
12	364	224.66	934.8	
13	390	250.33	972.6	
14	418	288.91	1,047.5	
15	447	166.53	564.5	
16	462	310.24	1,017.7	
17	482	223.04	701.4	
18	500	182.67	553.5	
19	523	174.73	506.2	
20	560	213.08	576.6	
21	657	160.22	369.7	
22	673	171.80	387.0	
23	695	392.00	855.2	
24	798	958.90	1,821.0	
25	10,380	75.00	10.9	Upper Marker



Assay Class: High Sensitivity DNA Assay  
Data Path: C:\...ents and Settings\Bioanalyzer\2012-06-05\2012-06-05\_002.xad

Created: 6/5/2012 11:41:43 AM  
Modified: 6/5/2012 12:26:35 PM

**Electropherogram Summary Continued ...**

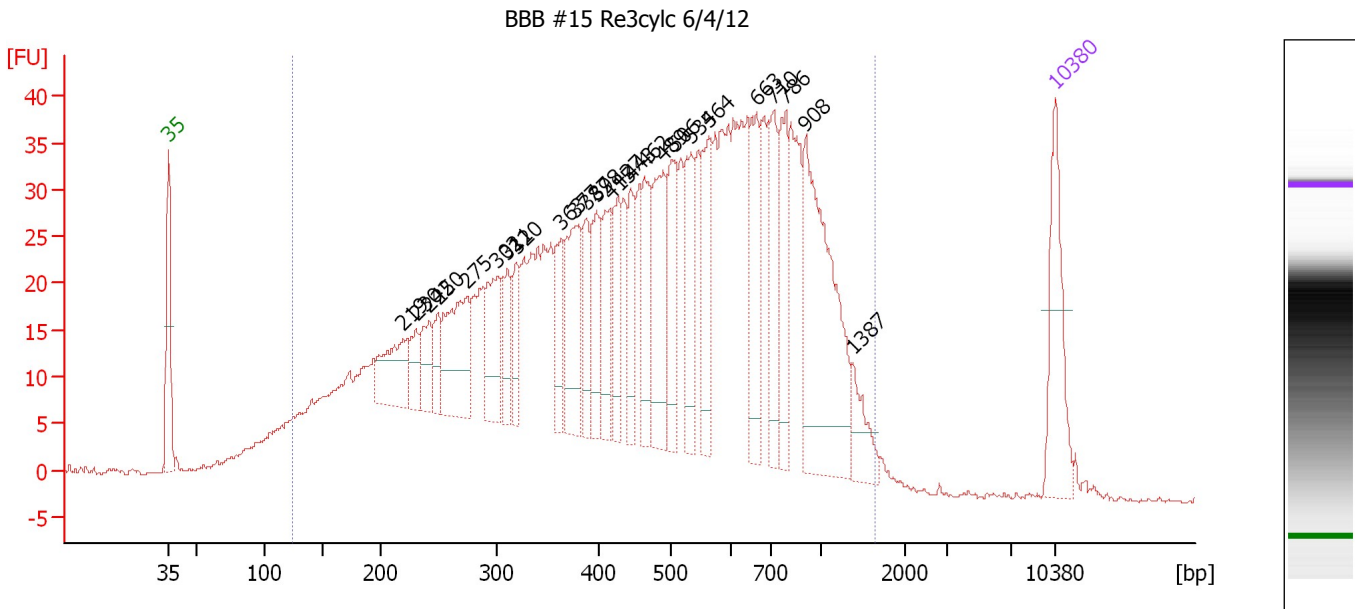
... Region table for sample 8 : BBB #13 Re3cylc 6/4/12

From [bp]	To [bp]	Average Size [bp]	Molarity [pmol/l]	Conc. [pg/μl]	Corr. Area	% of Total	Size distribution in CV [%]	Color
105	1,622	494	50,557.7	10,842.68	5,344.8	96	52.5	■

Assay Class: High Sensitivity DNA Assay  
 Data Path: C:\...ents and Settings\Bioanalyzer\2012-06-05\2012-06-05\_002.xad

Created: 6/5/2012 11:41:43 AM  
 Modified: 6/5/2012 12:26:35 PM

**Electropherogram Summary Continued ...**



**Overall Results for sample 9 : BBB #15 Re3cylc 6/4/12**

Number of peaks found: 25                      Corr. Area 1: 1,461.0  
 Noise: 0.1

**Peak table for sample 9 : BBB #15 Re3cylc 6/4/12**

Peak	Size [bp]	Conc. [pg/μl]	Molarity [pmol/l]	Observations
1	35	125.00	5,411.3	Lower Marker
2	219	81.24	562.2	
3	230	35.35	232.5	
4	242	43.29	271.2	
5	250	29.52	179.2	
6	275	120.42	664.6	
7	302	77.15	387.4	
8	311	40.18	195.8	
9	320	41.16	195.2	
10	363	55.16	230.1	
11	377	100.34	403.2	
12	387	47.78	186.9	
13	398	66.35	252.8	
14	415	60.06	219.3	
15	427	54.87	194.9	
16	443	52.24	178.6	
17	462	79.78	261.5	
18	489	105.70	327.6	
19	506	79.17	237.2	
20	534	73.87	209.8	
21	564	78.89	212.1	
22	663	83.00	189.6	
23	710	79.23	169.0	
24	786	79.51	153.3	
25	908	221.47	369.5	
26	1,387	33.74	36.9	


Assay Class: High Sensitivity DNA Assay  
Data Path: C:\...ents and Settings\Bioanalyzer\2012-06-05\2012-06-05\_002.xad

Created: 6/5/2012 11:41:43 AM  
Modified: 6/5/2012 12:26:35 PM

**Electropherogram Summary Continued ...****... Peak table for sample 9 : BBB #15 Re3cylc 6/4/12**

Peak	Size [bp]	Conc. [pg/ $\mu$ l]	Molarity [pmol/l]	Observations
27	10,380	75.00	10.9	Upper Marker

**Region table for sample 9 : BBB #15 Re3cylc 6/4/12**

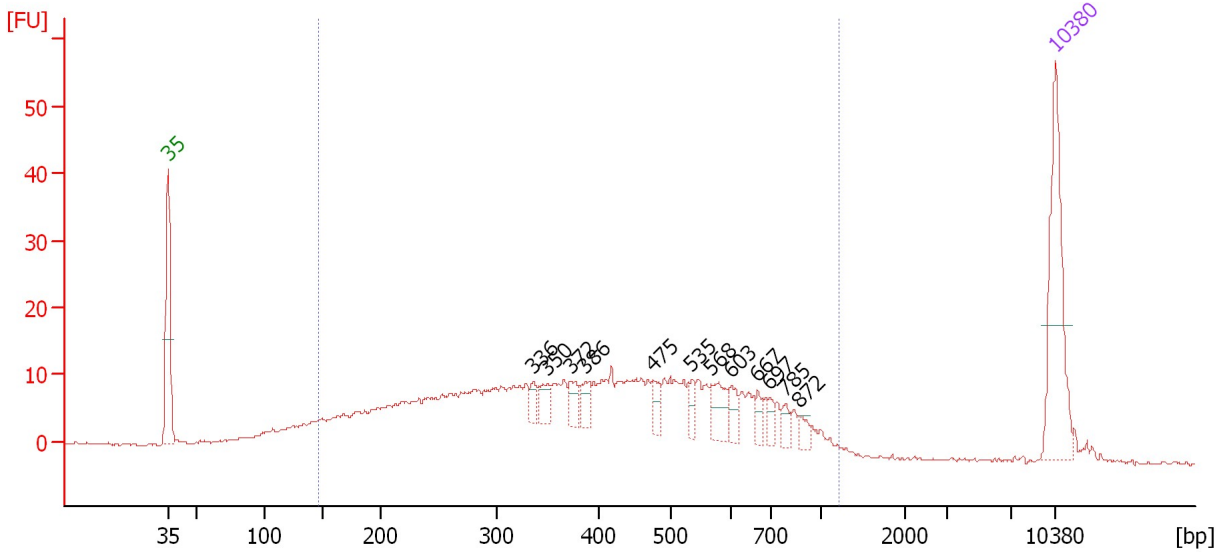
From [bp]	To [bp]	Average Size [bp]	Molarity [pmol/l]	Conc. [pg/ $\mu$ l]	Corr. Area	% of Total	Size distribution in CV [%]	Color
123	1,640	525	16,423.6	3,810.99	1,461.0	96	51.9	

Assay Class: High Sensitivity DNA Assay  
 Data Path: C:\...ents and Settings\Bioanalyzer\2012-06-05\2012-06-05\_002.xad

Created: 6/5/2012 11:41:43 AM  
 Modified: 6/5/2012 12:26:35 PM

**Electropherogram Summary Continued ...**

BBB #17 Re3cylc 6/4/12



**Overall Results for sample 10 : BBB #17 Re3cylc 6/4/12**

Number of peaks found: 12                      Corr. Area 1: 456.7  
 Noise: 0.1

**Peak table for sample 10 : BBB #17 Re3cylc 6/4/12**

Peak	Size [bp]	Conc. [pg/μl]	Molarity [pmol/l]	Observations
1	35	125.00	5,411.3	Lower Marker
2	336	9.75	43.9	
3	350	14.07	60.9	
4	372	14.40	58.7	
5	386	12.71	49.9	
6	475	11.94	38.1	
7	535	11.07	31.4	
8	568	22.95	61.2	
9	603	12.38	31.1	
10	667	9.52	21.6	
11	697	8.34	18.1	
12	785	7.44	14.4	
13	872	7.09	12.3	
14	10,380	75.00	10.9	Upper Marker

**Region table for sample 10 : BBB #17 Re3cylc 6/4/12**

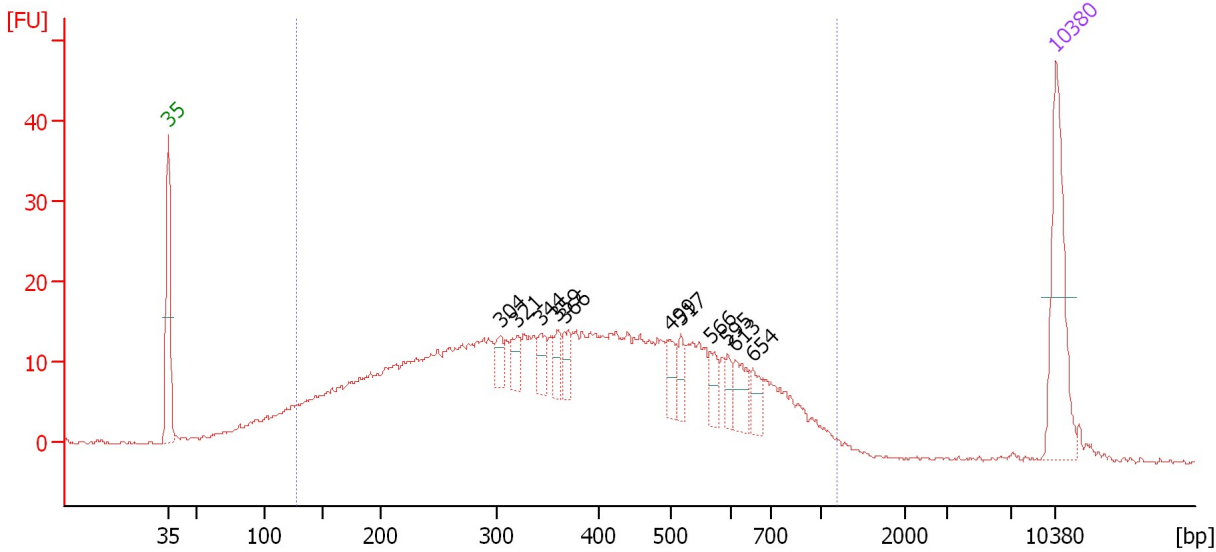
From [bp]	To [bp]	Average Size [bp]	Molarity [pmol/l]	Conc. [pg/μl]	Corr. Area	% of Total	Size distribution in CV [%]	Color
147	1,221	432	4,218.9	905.17	456.7	92	43.7	Blue

Assay Class: High Sensitivity DNA Assay  
 Data Path: C:\...ents and Settings\Bioanalyzer\2012-06-05\2012-06-05\_002.xad

Created: 6/5/2012 11:41:43 AM  
 Modified: 6/5/2012 12:26:35 PM

**Electropherogram Summary Continued ...**

BBB #20 Re3cylc 6/4/12



**Overall Results for sample 11 : BBB #20 Re3cylc 6/4/12**

Number of peaks found: 11                      Corr. Area 1: 640.4  
 Noise: 0.2

**Peak table for sample 11 : BBB #20 Re3cylc 6/4/12**

Peak	Size [bp]	Conc. [pg/µl]	Molarity [pmol/l]	Observations
1	35	125.00	5,411.3	Lower Marker
2	304	14.68	73.2	
3	321	18.33	86.5	
4	344	17.54	77.3	
5	359	14.94	63.0	
6	366	18.57	76.8	
7	499	20.87	63.3	
8	517	14.96	43.9	
9	566	16.60	44.4	
10	595	11.93	30.4	
11	613	23.79	58.8	
12	654	16.22	37.6	
13	10,380	75.00	10.9	Upper Marker

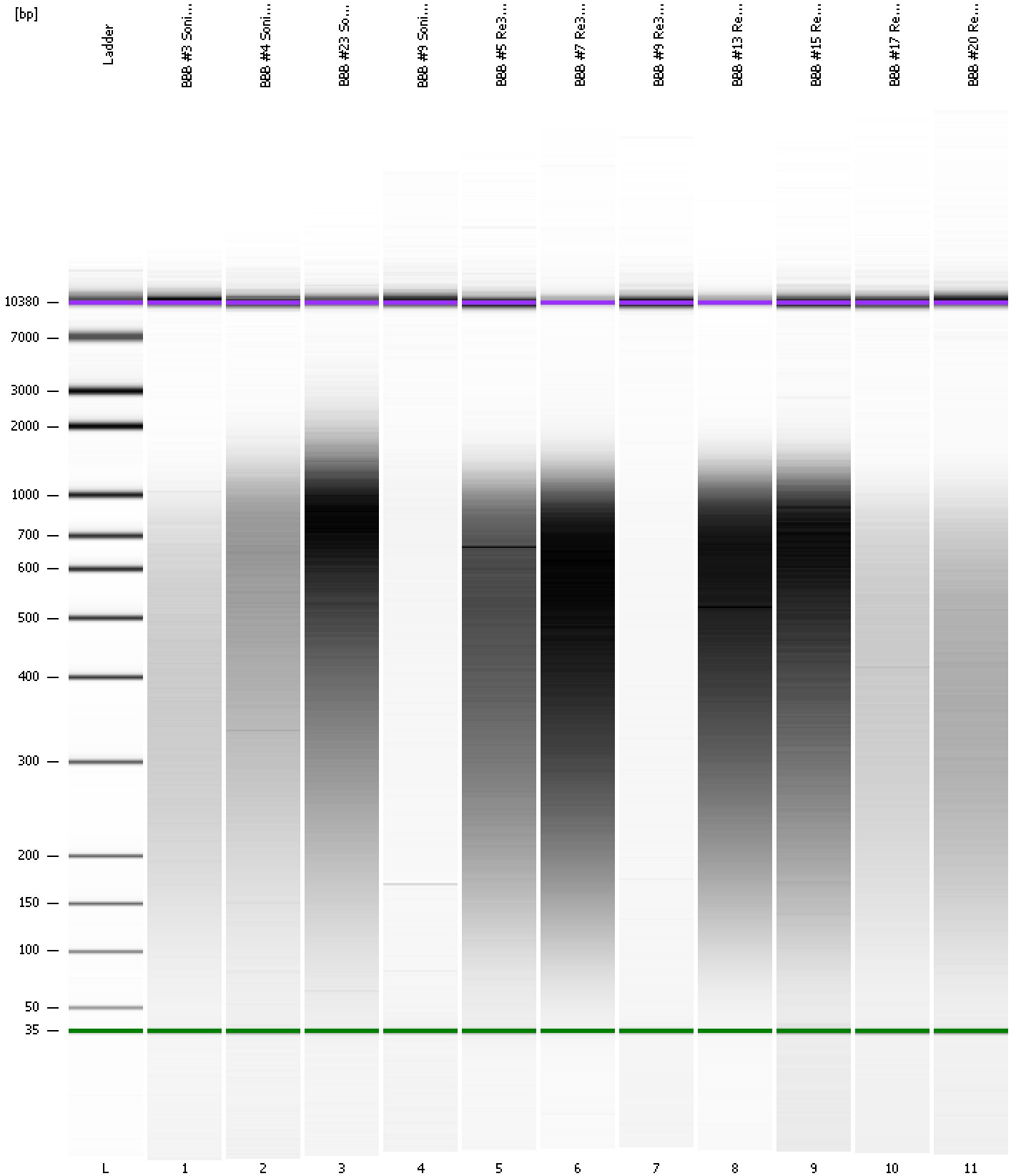
**Region table for sample 11 : BBB #20 Re3cylc 6/4/12**

From [bp]	To [bp]	Average Size [bp]	Molarity [pmol/l]	Conc. [pg/µl]	Corr. Area	% of Total	Size distribution in CV [%]	Color
128	1,193	401	7,464.6	1,460.55	640.4	93	44.5	Blue

Assay Class: High Sensitivity DNA Assay  
Data Path: C:\...ents and Settings\Bioanalyzer\2012-06-05\2012-06-05\_002.xad

Created: 6/5/2012 11:41:43 AM  
Modified: 6/5/2012 12:26:35 PM

**Gel Image**



Assay Class: High Sensitivity DNA Assay  
 Data Path: C:\...ents and Settings\Bioanalyzer\2012-06-05\2012-06-05\_002.xad

Created: 6/5/2012 11:41:43 AM  
 Modified: 6/5/2012 12:26:35 PM

**Run Logbook**

Description	Number	Source	Category	Sub Category	Time	Time Zone	User	Host
Run ended on port 1 (Number of wells acquired: 12)		Instrument	Run		6/5/2012 12:23:02 PM	(GMT --07:00) Pacific Standard Time	UC Davis	D8XSMGH1
Run started on port 1 (File: C:\Documents and Settings\Bioanalyzer\2012-06-05\2012-06-05_002.xad)		Instrument	Run		6/5/2012 11:41:49 AM	(GMT --07:00) Pacific Standard Time	UC Davis	D8XSMGH1
Product Number : G2938B		Instrument	Run		6/5/2012 11:41:49 AM	(GMT --07:00) Pacific Standard Time	UC Davis	D8XSMGH1
Name :		Instrument	Run		6/5/2012 11:41:49 AM	(GMT --07:00) Pacific Standard Time	UC Davis	D8XSMGH1
Vendor : Agilent Technologies		Instrument	Run		6/5/2012 11:41:49 AM	(GMT --07:00) Pacific Standard Time	UC Davis	D8XSMGH1
Serial# : DE13701086		Instrument	Run		6/5/2012 11:41:49 AM	(GMT --07:00) Pacific Standard Time	UC Davis	D8XSMGH1
Firmware : C.01.069		Instrument	Run		6/5/2012 11:41:49 AM	(GMT --07:00) Pacific Standard Time	UC Davis	D8XSMGH1
Cartridge : Electrode		Instrument	Run		6/5/2012 11:41:49 AM	(GMT --07:00) Pacific Standard Time	UC Davis	D8XSMGH1