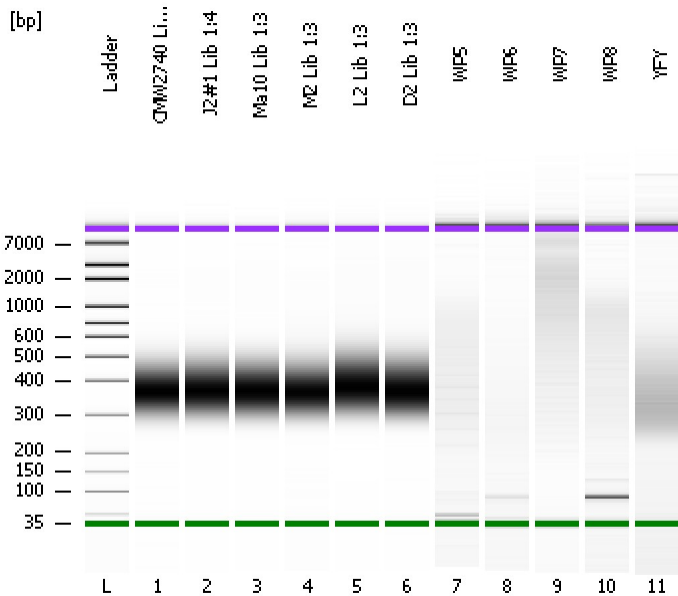


Assay Class: High Sensitivity DNA Assay
Data Path: C:\...ents and Settings\Bioanalyzer\2012-06-06\2012-06-06_001.xad

Created: 6/6/2012 9:24:54 AM
Modified: 6/6/2012 10:15:09 AM

Electrophoresis File Run Summary



Instrument Information:

Instrument Name: DE13701086 Firmware: C.01.069
Serial#: DE13701086 Type: G2938B

Assay Information:

Assay Origin Path: C:\Program Files\Agilent\2100 bioanalyzer\2100 expert\assays\dsDNA\High Sensitivity DNA.xsy
Assay Class: High Sensitivity DNA Assay
Version: 1.03
Assay Comments: Copyright © 2003-2010 Agilent Technologies

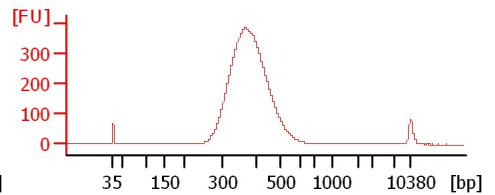
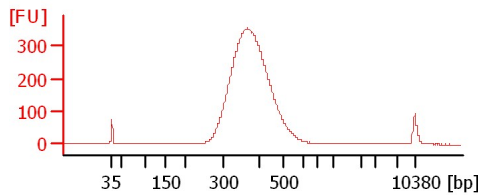
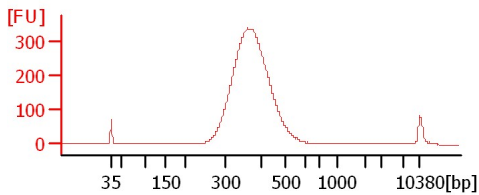
Chip Information:

Chip Lot #:
Reagent Kit Lot #:
Chip Comments:

CMW2740 Lib 1:4

J2#1 Lib 1:4

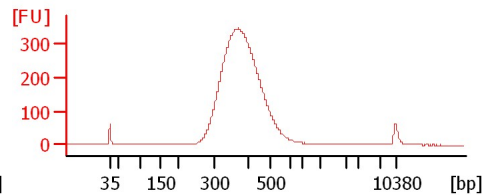
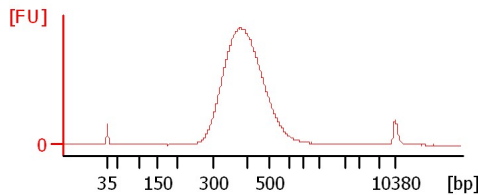
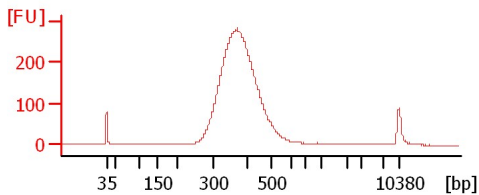
Ma10 Lib 1:3



M2 Lib 1:3

L2 Lib 1:3

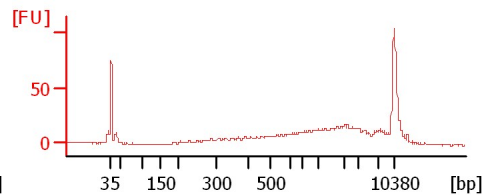
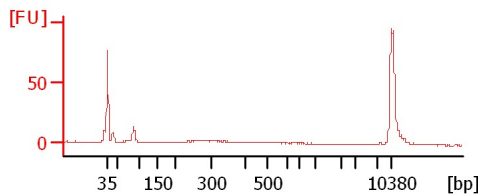
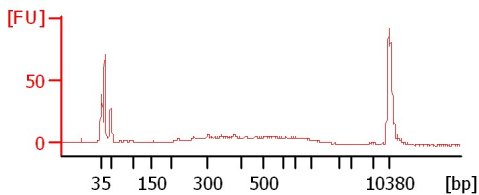
D2 Lib 1:3



WP5

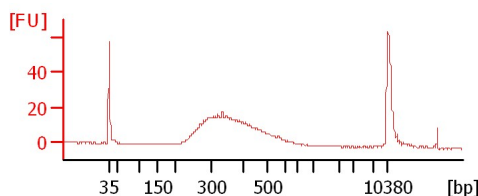
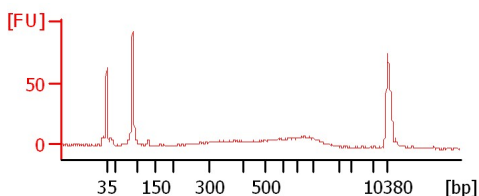
WP6

WP7



WP8

YFY



Assay Class: High Sensitivity DNA Assay
 Data Path: C:\...ents and Settings\Bioanalyzer\2012-06-06\2012-06-06_001.xad

Created: 6/6/2012 9:24:54 AM
 Modified: 6/6/2012 10:15:09 AM

Electrophoresis File Run Summary (Chip Summary)

Sample Name	Sample Comment	Rest. Digest	Status	Observation	Result Label	Result Color
CMW2740 Lib 1:4		<input type="checkbox"/>	✓			
J2#1 Lib 1:4		<input type="checkbox"/>	✓			
Ma10 Lib 1:3		<input type="checkbox"/>	✓			
M2 Lib 1:3		<input type="checkbox"/>	✓			
L2 Lib 1:3		<input type="checkbox"/>	✓			
D2 Lib 1:3		<input type="checkbox"/>	✓			
WP5		<input type="checkbox"/>	✓			
WP6		<input type="checkbox"/>	✓			
WP7		<input type="checkbox"/>	✓			
WP8		<input type="checkbox"/>	✓			
YFY		<input type="checkbox"/>	✓			
Ladder		<input type="checkbox"/>	✓			

Chip Lot #

Reagent Kit Lot #

Chip Comments :

Assay Class: High Sensitivity DNA Assay
Data Path: C:\...ents and Settings\Bioanalyzer\2012-06-06\2012-06-06_001.xad

Created: 6/6/2012 9:24:54 AM
Modified: 6/6/2012 10:15:09 AM

Electrophoresis Assay Details

General Analysis Settings

Number of Available Sample and Ladder Wells (Max.) : 12
Minimum Visible Range [s] : 32
Maximum Visible Range [s] : 138
Start Analysis Time Range [s] : 33
End Analysis Time Range [s] : 137.5
Ladder Concentration [pg/μl] : 1950
Uses Standard Area for Ladder Fragments
Lower Marker Concentration [pg/μl] : 125
Upper Marker Concentration [pg/μl] : 75
Used Upper Marker for Quantitation
Standard Curve Fit is Point to Point
Show Data Aligned to Lower and Upper Marker

Integrator Settings

Integration Start Time [s] : 33.05
Integration End Time [s] : 137
Slope Threshold : 0.8
Height Threshold [FU] : 5
Area Threshold : 0.1
Width Threshold [s] : 0.6
Baseline Plateau [s] : 0.5

Filter Settings

Filter Width [s] : 0.5
Polynomial Order : 4

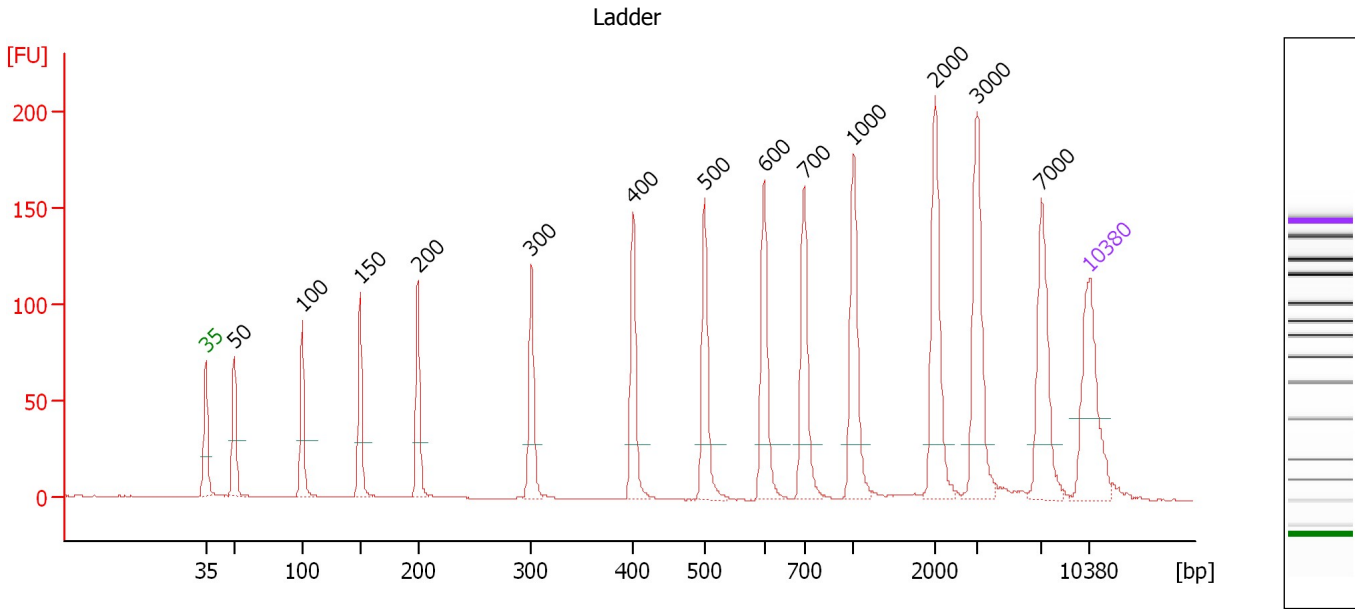
Ladder

Ladder Peak	Size	Area
1	35	160
2	50	210
3	100	208
4	150	221
5	200	242
6	300	270
7	400	305
8	500	306
9	600	336
10	700	321
11	1000	366
12	2000	413
13	3000	411
14	7000	400
15	10380	214

Assay Class: High Sensitivity DNA Assay
 Data Path: C:\...ents and Settings\Bioanalyzer\2012-06-06\2012-06-06_001.xad

Created: 6/6/2012 9:24:54 AM
 Modified: 6/6/2012 10:15:09 AM

Electropherogram Summary



Overall Results for Ladder

Noise: 0.1

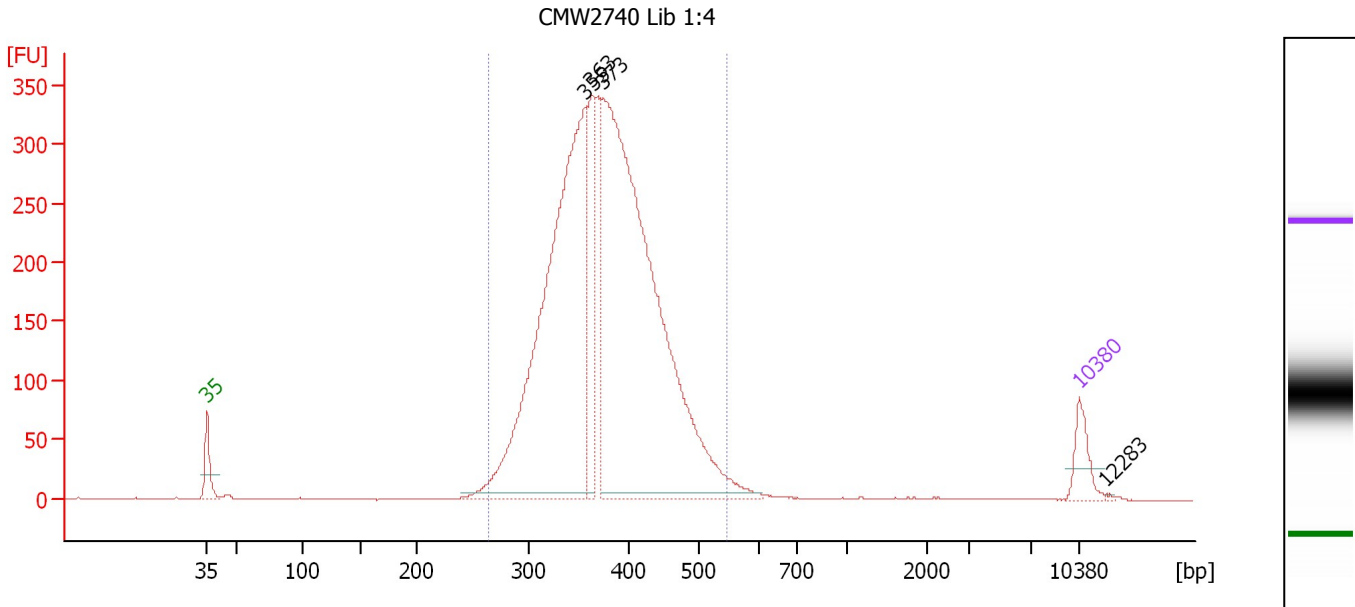
Peak table for Ladder

Peak	Size [bp]	Conc. [pg/μl]	Molarity [pmol/l]	Observations
1	35	125.00	5,411.3	Lower Marker
2	50	150.00	4,545.5	Ladder Peak
3	100	150.00	2,272.7	Ladder Peak
4	150	150.00	1,515.2	Ladder Peak
5	200	150.00	1,136.4	Ladder Peak
6	300	150.00	757.6	Ladder Peak
7	400	150.00	568.2	Ladder Peak
8	500	150.00	454.5	Ladder Peak
9	600	150.00	378.8	Ladder Peak
10	700	150.00	324.7	Ladder Peak
11	1,000	150.00	227.3	Ladder Peak
12	2,000	150.00	113.6	Ladder Peak
13	3,000	150.00	75.8	Ladder Peak
14	7,000	150.00	32.5	Ladder Peak
15	10,380	75.00	10.9	Upper Marker

Assay Class: High Sensitivity DNA Assay
 Data Path: C:\...ents and Settings\Bioanalyzer\2012-06-06\2012-06-06_001.xad

Created: 6/6/2012 9:24:54 AM
 Modified: 6/6/2012 10:15:09 AM

Electropherogram Summary Continued ...



Overall Results for sample 1 : CMW2740 Lib 1:4

Number of peaks found: 4 Corr. Area 1: 4,661.4
 Noise: 0.2

Peak table for sample 1 : CMW2740 Lib 1:4

Peak	Size [bp]	Conc. [pg/μl]	Molarity [pmol/l]	Observations
1	35	125.00	5,411.3	Lower Marker
2	355	2,118.93	9,037.5	
3	363	383.37	1,601.6	
4	373	2,711.21	11,004.7	
5	10,380	75.00	10.9	Upper Marker
6	12,283	0.00	0.0	

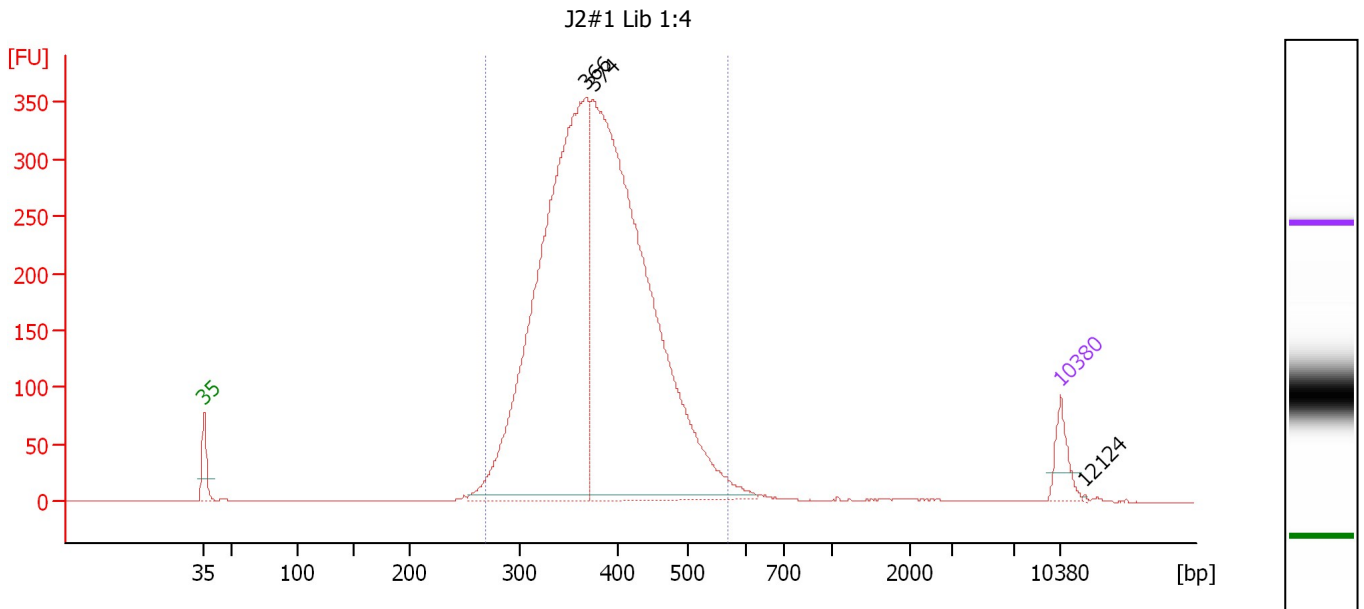
Region table for sample 1 : CMW2740 Lib 1:4

From [bp]	To [bp]	Average Size [bp]	Molarity [pmol/l]	Conc. [pg/μl]	Corr. Area	% of Total	Size distribution in CV [%]	Color
264	545	378	22,085.8	5,381.51	4,661.4	97	13.8	Blue

Assay Class: High Sensitivity DNA Assay
 Data Path: C:\...ents and Settings\Bioanalyzer\2012-06-06\2012-06-06_001.xad

Created: 6/6/2012 9:24:54 AM
 Modified: 6/6/2012 10:15:09 AM

Electropherogram Summary Continued ...



Overall Results for sample 2 : J2#1 Lib 1:4

Number of peaks found: 3 Corr. Area 1: 5,075.5
 Noise: 0.1

Peak table for sample 2 : J2#1 Lib 1:4

Peak	Size [bp]	Conc. [pg/μl]	Molarity [pmol/l]	Observations
1	35	125.00	5,411.3	Lower Marker
2	366	2,752.53	11,384.3	
3	374	3,090.64	12,506.1	
4	10,380	75.00	10.9	Upper Marker
5	12,124	0.00	0.0	

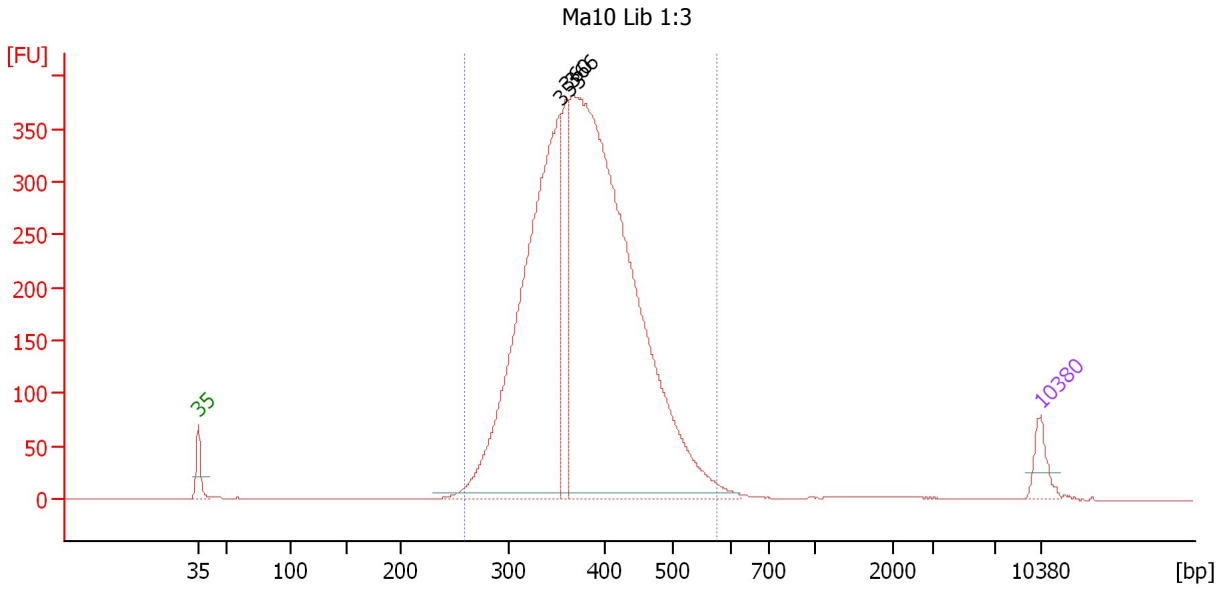
Region table for sample 2 : J2#1 Lib 1:4

From [bp]	To [bp]	Average Size [bp]	Molarity [pmol/l]	Conc. [pg/μl]	Corr. Area	% of Total	Size distribution in CV [%]	Color
269	569	383	23,660.8	5,825.86	5,075.5	97	14.8	Blue

Assay Class: High Sensitivity DNA Assay
 Data Path: C:\...ents and Settings\Bioanalyzer\2012-06-06\2012-06-06_001.xad

Created: 6/6/2012 9:24:54 AM
 Modified: 6/6/2012 10:15:09 AM

Electropherogram Summary Continued ...



Overall Results for sample 3 : Ma10 Lib 1:3

Number of peaks found: 3 Corr. Area 1: 5,509.7
 Noise: 0.1

Peak table for sample 3 : Ma10 Lib 1:3

Peak	Size [bp]	Conc. [pg/μl]	Molarity [pmol/l]	Observations
1	35	125.00	5,411.3	Lower Marker
2	353	2,493.42	10,697.4	
3	360	386.64	1,628.4	
4	366	4,138.54	17,141.9	
5	10,380	75.00	10.9	Upper Marker

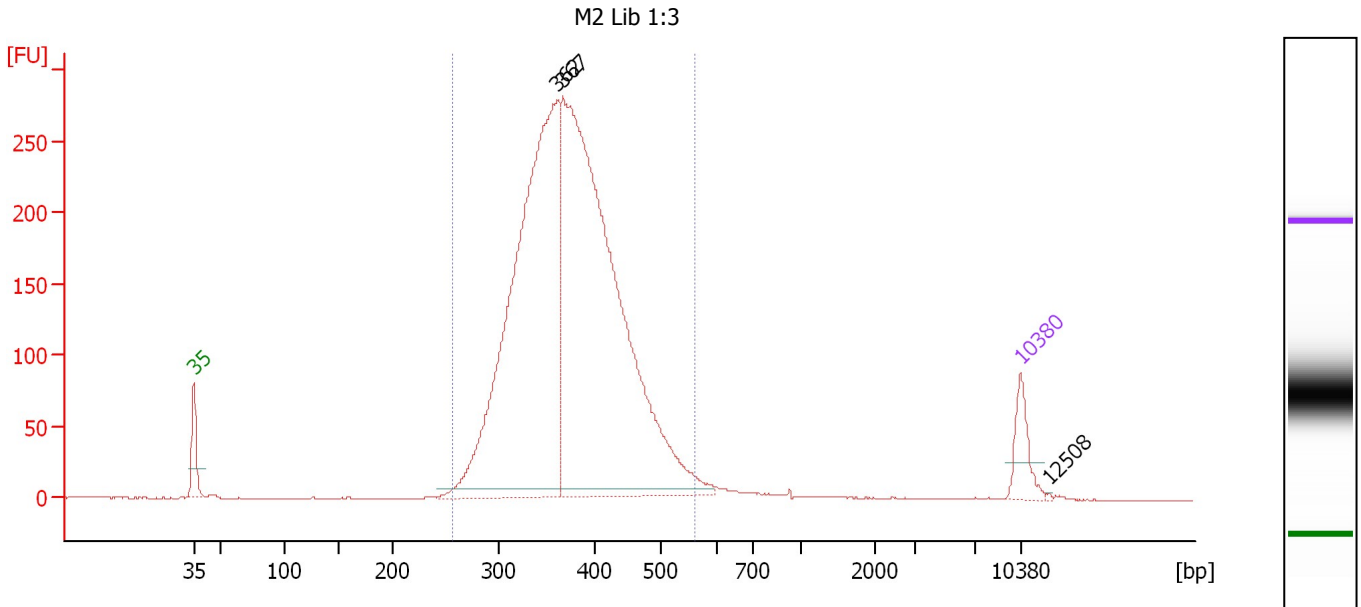
Region table for sample 3 : Ma10 Lib 1:3

From [bp]	To [bp]	Average Size [bp]	Molarity [pmol/l]	Conc. [pg/μl]	Corr. Area	% of Total	Size distribution in CV [%]	Color
260	576	381	28,254.9	6,916.91	5,509.7	98	14.9	Blue

Assay Class: High Sensitivity DNA Assay
 Data Path: C:\...ents and Settings\Bioanalyzer\2012-06-06\2012-06-06_001.xad

Created: 6/6/2012 9:24:54 AM
 Modified: 6/6/2012 10:15:09 AM

Electropherogram Summary Continued ...



Overall Results for sample 4 : M2 Lib 1:3

Number of peaks found: 3 Corr. Area 1: 3,885.1
 Noise: 0.2

Peak table for sample 4 : M2 Lib 1:3

Peak	Size [bp]	Conc. [pg/μl]	Molarity [pmol/l]	Observations
1	35	125.00	5,411.3	Lower Marker
2	362	1,914.68	8,017.8	
3	367	2,308.75	9,520.8	
4	10,380	75.00	10.9	Upper Marker
5	12,508	0.00	0.0	

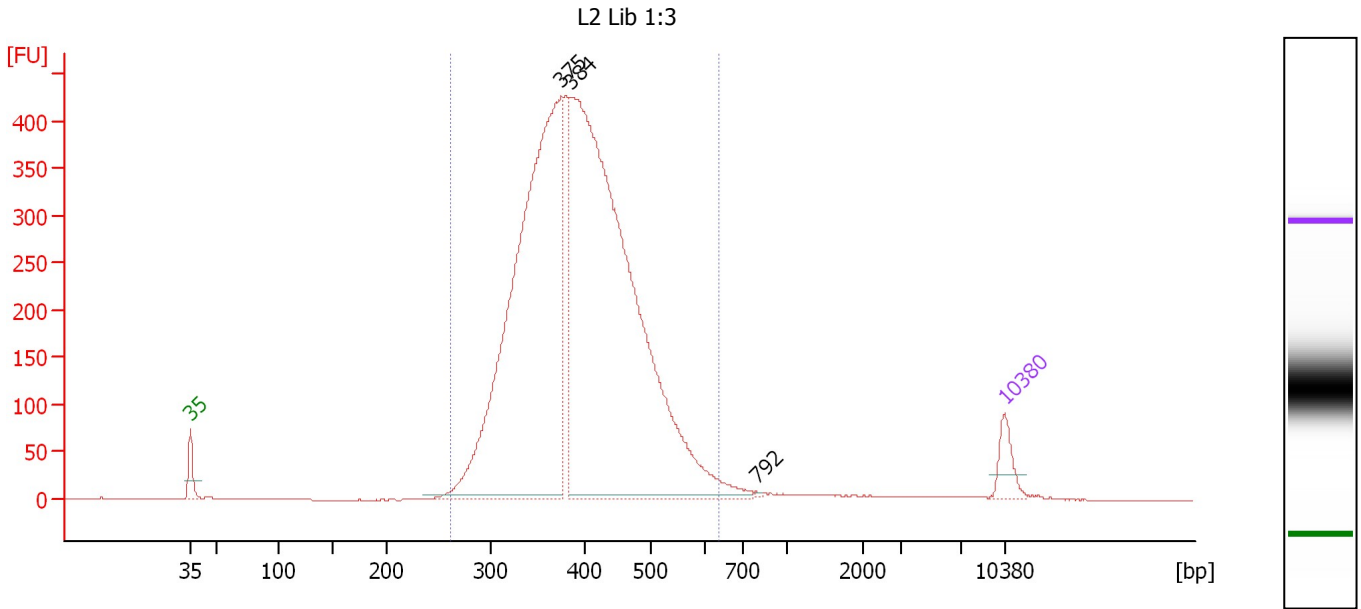
Region table for sample 4 : M2 Lib 1:3

From [bp]	To [bp]	Average Size [bp]	Molarity [pmol/l]	Conc. [pg/μl]	Corr. Area	% of Total	Size distribution in CV [%]	Color
257	562	378	17,493.8	4,248.90	3,885.1	97	14.7	Blue

Assay Class: High Sensitivity DNA Assay
 Data Path: C:\...ents and Settings\Bioanalyzer\2012-06-06\2012-06-06_001.xad

Created: 6/6/2012 9:24:54 AM
 Modified: 6/6/2012 10:15:09 AM

Electropherogram Summary Continued ...



Overall Results for sample 5 : L2 Lib 1:3

Number of peaks found: 3 Corr. Area 1: 6,618.6
 Noise: 0.1

Peak table for sample 5 : L2 Lib 1:3

Peak	Size [bp]	Conc. [pg/μl]	Molarity [pmol/l]	Observations
1	35	125.00	5,411.3	Lower Marker
2	375	2,851.69	11,513.8	
3	384	3,689.31	14,543.6	
4	792	4.00	7.7	
5	10,380	75.00	10.9	Upper Marker

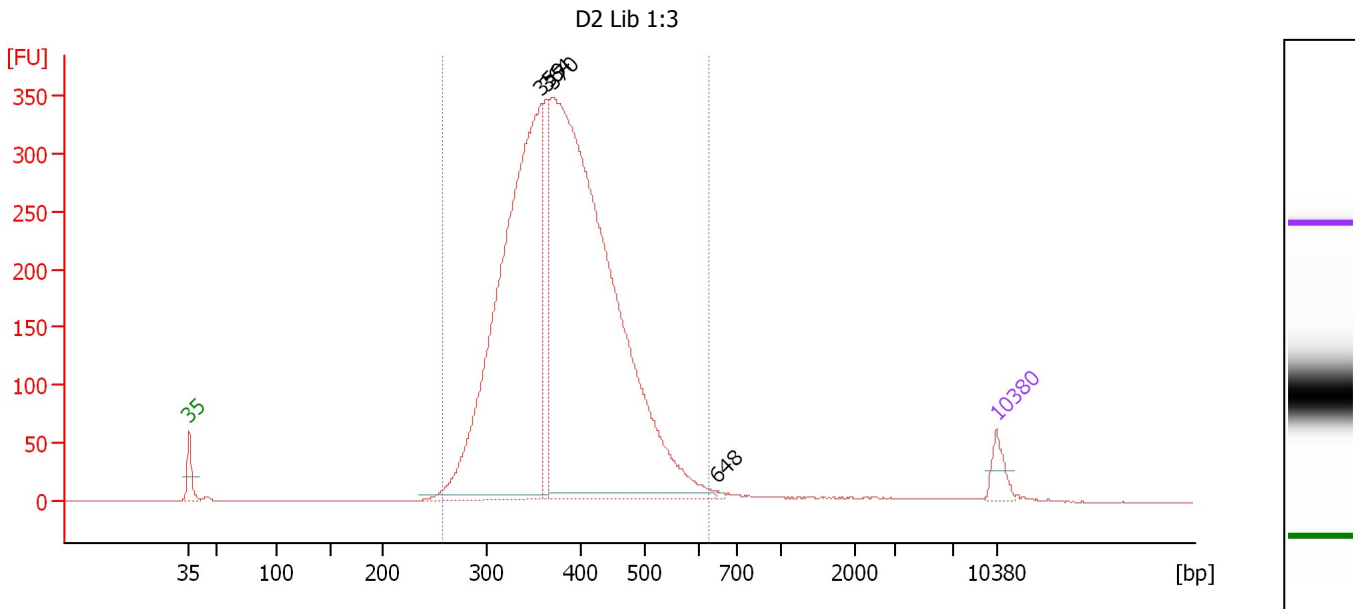
Region table for sample 5 : L2 Lib 1:3

From [bp]	To [bp]	Average Size [bp]	Molarity [pmol/l]	Conc. [pg/μl]	Corr. Area	% of Total	Size distribution in CV [%]	Color
262	636	400	26,578.8	6,792.04	6,618.6	97	16.6	Blue

Assay Class: High Sensitivity DNA Assay
 Data Path: C:\...ents and Settings\Bioanalyzer\2012-06-06\2012-06-06_001.xad

Created: 6/6/2012 9:24:54 AM
 Modified: 6/6/2012 10:15:09 AM

Electropherogram Summary Continued ...



Overall Results for sample 6 : D2 Lib 1:3

Number of peaks found: 4 Corr. Area 1: 5,290.2
 Noise: 0.1

Peak table for sample 6 : D2 Lib 1:3

Peak	Size [bp]	Conc. [pg/μl]	Molarity [pmol/l]	Observations
1	35	125.00	5,411.3	Lower Marker
2	359	3,371.93	14,246.4	
3	364	520.58	2,164.9	
4	370	4,941.94	20,233.5	
5	648	6.32	14.8	
6	10,380	75.00	10.9	Upper Marker

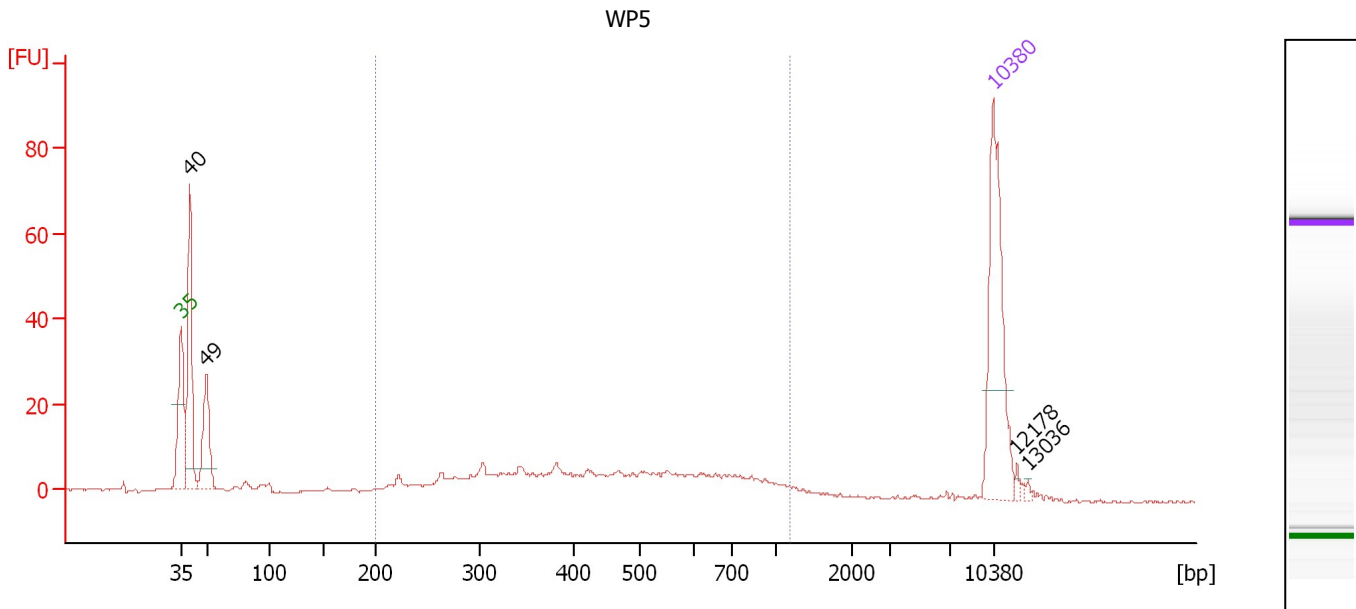
Region table for sample 6 : D2 Lib 1:3

From [bp]	To [bp]	Average Size [bp]	Molarity [pmol/l]	Conc. [pg/μl]	Corr. Area	% of Total	Size distribution in CV [%]	Color
258	625	386	35,652.5	8,791.74	5,290.2	97	16.2	Blue

Assay Class: High Sensitivity DNA Assay
 Data Path: C:\...ents and Settings\Bioanalyzer\2012-06-06\2012-06-06_001.xad

Created: 6/6/2012 9:24:54 AM
 Modified: 6/6/2012 10:15:09 AM

Electropherogram Summary Continued ...



Overall Results for sample 7 : WP5

Number of peaks found: 4 Corr. Area 1: 209.7
 Noise: 0.2

Peak table for sample 7 : WP5

Peak	Size [bp]	Conc. [pg/μl]	Molarity [pmol/l]	Observations
1	35	125.00	5,411.3	Lower Marker
2	40	116.28	4,422.7	
3	49	59.39	1,828.7	
4	10,380	75.00	10.9	Upper Marker
5	12,178	0.00	0.0	
6	13,036	0.00	0.0	

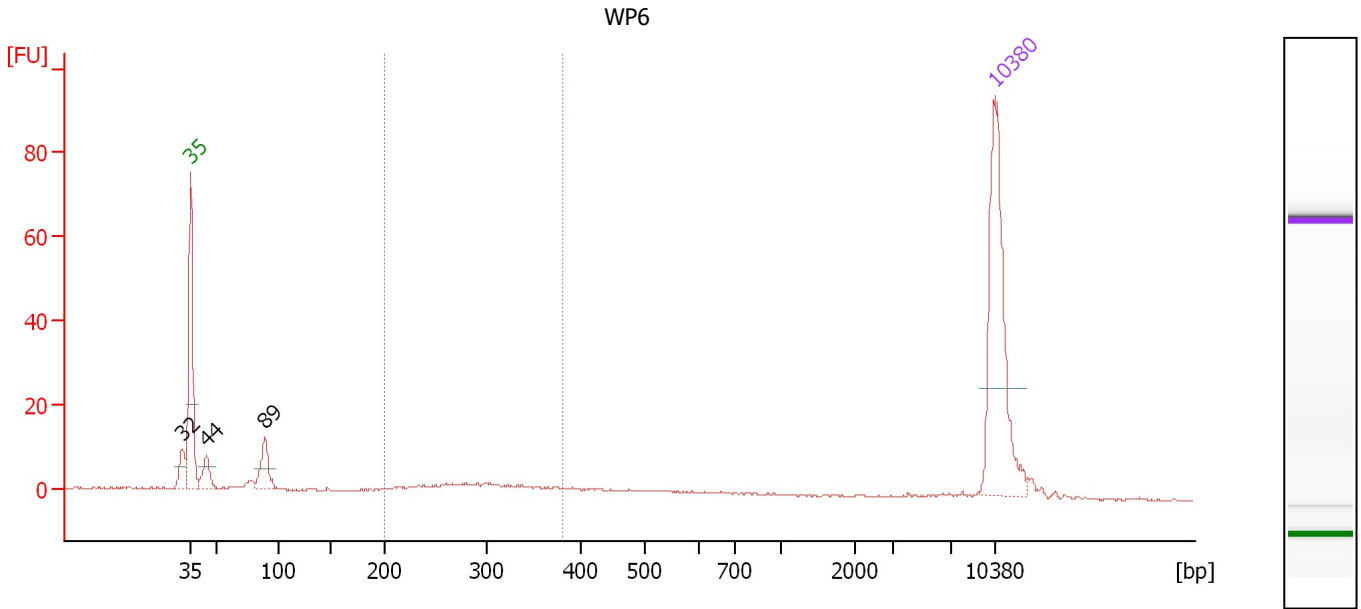
Region table for sample 7 : WP5

From [bp]	To [bp]	Average Size [bp]	Molarity [pmol/l]	Conc. [pg/μl]	Corr. Area	% of Total	Size distribution in CV [%]	Color
200	1,182	483	806.2	207.03	209.7	56	41.1	Blue

Assay Class: High Sensitivity DNA Assay
 Data Path: C:\...ents and Settings\Bioanalyzer\2012-06-06\2012-06-06_001.xad

Created: 6/6/2012 9:24:54 AM
 Modified: 6/6/2012 10:15:09 AM

Electropherogram Summary Continued ...



Overall Results for sample 8 : WP6

Number of peaks found: 3 Corr. Area 1: 32.4
 Noise: 0.2

Peak table for sample 8 : WP6

Peak	Size [bp]	Conc. [pg/μl]	Molarity [pmol/l]	Observations
1	32	0.00	0.0	
2	35	125.00	5,411.3	Lower Marker
3	44	16.40	566.8	
4	89	24.22	412.9	
5	10,380	75.00	10.9	Upper Marker

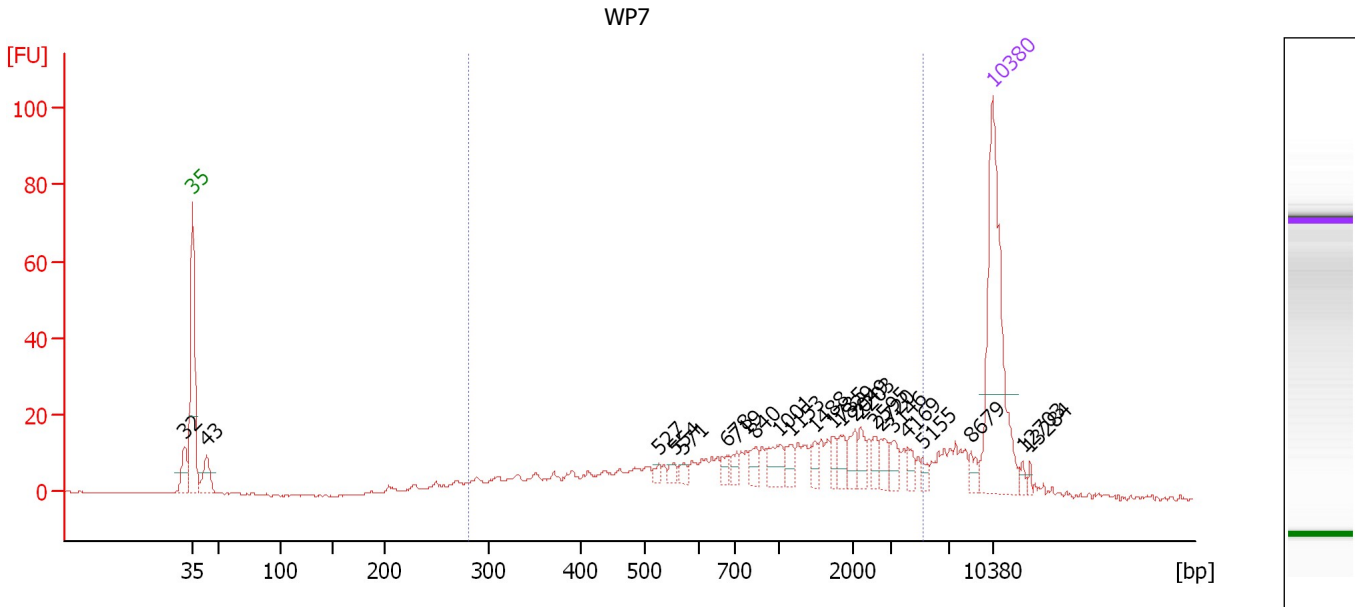
Region table for sample 8 : WP6

From [bp]	To [bp]	Average Size [bp]	Molarity [pmol/l]	Conc. [pg/μl]	Corr. Area	% of Total	Size distribution in CV [%]	Color
200	382	294	162.4	30.65	32.4	28	15.7	Blue

Assay Class: High Sensitivity DNA Assay
 Data Path: C:\...ents and Settings\Bioanalyzer\2012-06-06\2012-06-06_001.xad

Created: 6/6/2012 9:24:54 AM
 Modified: 6/6/2012 10:15:09 AM

Electropherogram Summary Continued ...



Overall Results for sample 9 : WP7

Number of peaks found: 23 Corr. Area 1: 422.4
 Noise: 0.1


Peak table for sample 9 : WP7

Peak	Size [bp]	Conc. [pg/μl]	Molarity [pmol/l]	Observations
1	32	0.00	0.0	
2	35	125.00	5,411.3	Lower Marker
3	43	19.93	702.5	
4	527	2.90	8.4	
5	554	3.61	9.9	
6	571	3.99	10.6	
7	678	5.05	11.3	
8	719	5.13	10.8	
9	840	6.80	12.3	
10	1,001	11.95	18.1	
11	1,153	6.34	8.3	
12	1,488	5.39	5.5	
13	1,735	5.06	4.4	
14	1,829	7.41	6.1	
15	2,049	7.92	5.9	
16	2,203	6.82	4.7	
17	2,595	4.84	2.8	
18	2,720	6.84	3.8	
19	3,146	6.27	3.0	
20	4,169	4.34	1.6	
21	5,155	3.13	0.9	
22	8,679	4.40	0.8	
23	10,380	75.00	10.9	Upper Marker
24	12,703	0.00	0.0	
25	13,284	0.00	0.0	

Assay Class: High Sensitivity DNA Assay
Data Path: C:\...ents and Settings\Bioanalyzer\2012-06-06\2012-06-06_001.xad

Created: 6/6/2012 9:24:54 AM
Modified: 6/6/2012 10:15:09 AM

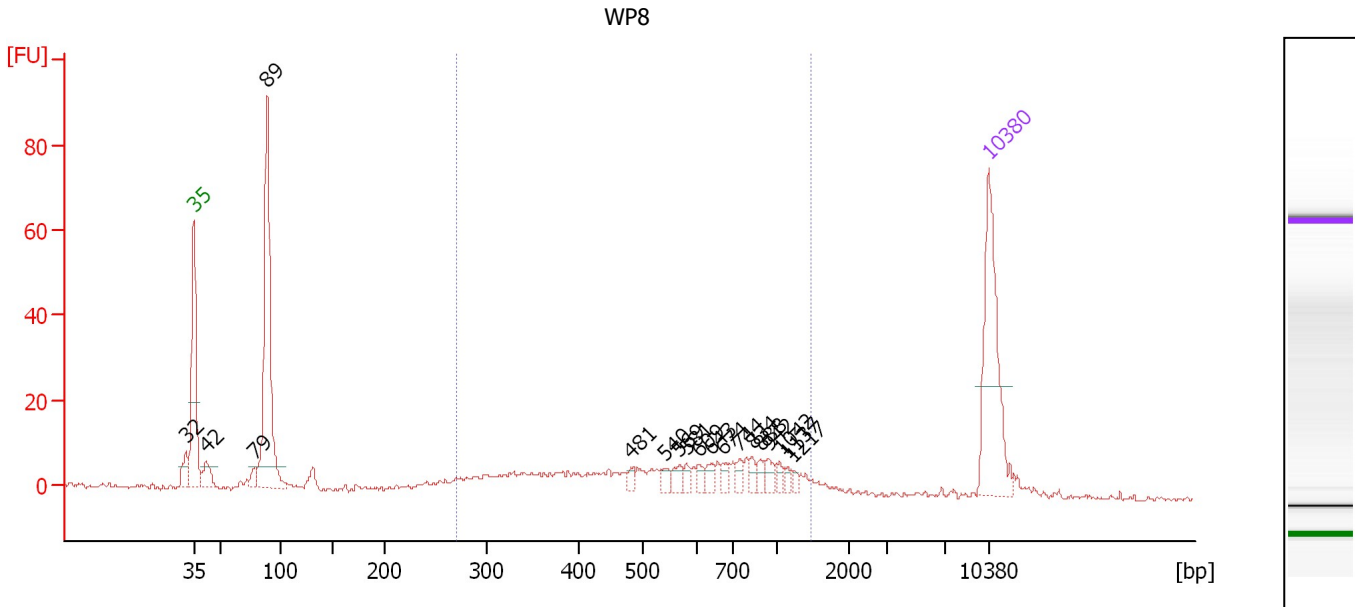
Electropherogram Summary Continued ...**... Region table for sample 9 : WP7**

From [bp]	To [bp]	Average Size [bp]	Molarity [pmol/l]	Conc. [pg/μl]	Corr. Area	% of Total	Size distribution in CV [%]	Co lor
281	5,190	1,385	680.6	304.07	422.4	77	79.9	

Assay Class: High Sensitivity DNA Assay
 Data Path: C:\...ents and Settings\Bioanalyzer\2012-06-06\2012-06-06_001.xad

Created: 6/6/2012 9:24:54 AM
 Modified: 6/6/2012 10:15:09 AM

Electropherogram Summary Continued ...



Overall Results for sample 10 : WP8

Number of peaks found: 18 Corr. Area 1: 190.7
 Noise: 0.5

Peak table for sample 10 : WP8

Peak	Size [bp]	Conc. [pg/μl]	Molarity [pmol/l]	Observations
1	32	0.00	0.0	
2	35	125.00	5,411.3	Lower Marker
3	42	20.54	744.5	
4	79	9.92	191.2	
5	89	201.39	3,440.8	
6	481	4.83	15.2	
7	540	6.04	17.0	
8	569	8.18	21.8	
9	581	4.99	13.0	
10	609	5.02	12.5	
11	643	7.03	16.6	
12	674	5.90	13.3	
13	744	5.91	12.0	
14	834	5.47	9.9	
15	888	5.90	10.1	
16	942	7.10	11.4	
17	1,042	4.58	6.7	
18	1,137	3.63	4.8	
19	1,217	3.23	4.0	
20	10,380	75.00	10.9	Upper Marker

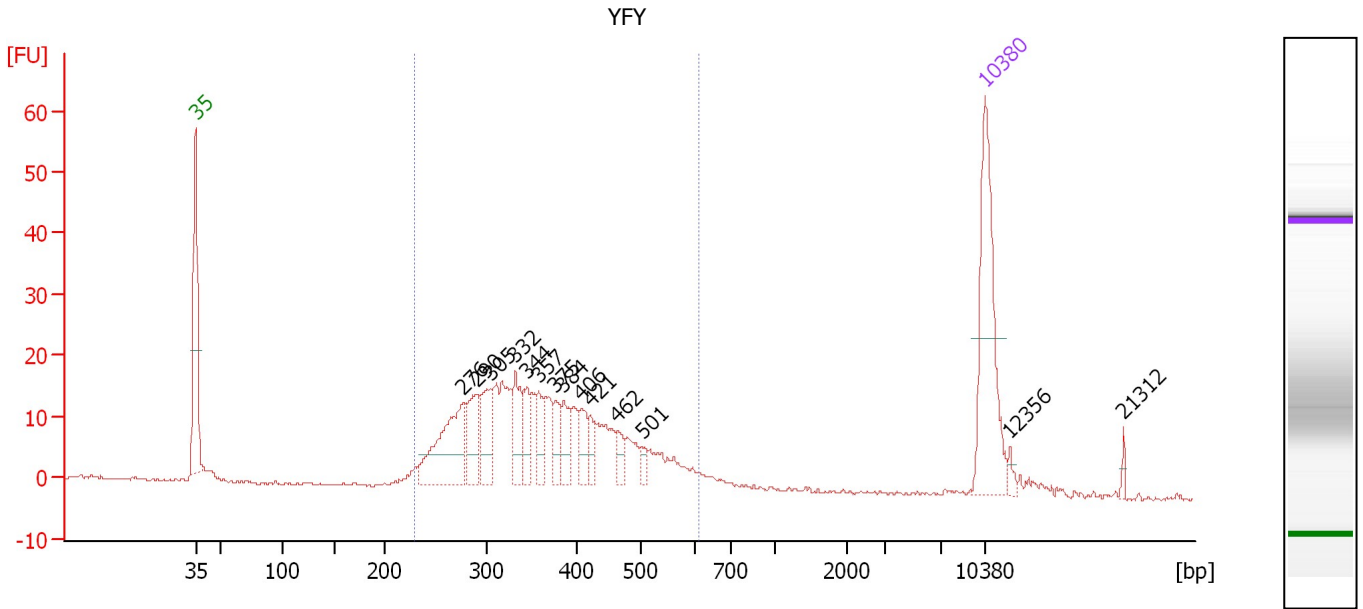
Region table for sample 10 : WP8

From [bp]	To [bp]	Average Size [bp]	Molarity [pmol/l]	Conc. [pg/μl]	Corr. Area	% of Total	Size distribution in CV [%]	Color
270	1,464	615	667.8	213.23	190.7	49	43.8	Blue

Assay Class: High Sensitivity DNA Assay
 Data Path: C:\...ents and Settings\Bioanalyzer\2012-06-06\2012-06-06_001.xad

Created: 6/6/2012 9:24:54 AM
 Modified: 6/6/2012 10:15:09 AM

Electropherogram Summary Continued ...



Overall Results for sample 11 : YFY

Number of peaks found: 14 Corr. Area 1: 362.2
 Noise: 0.2

Peak table for sample 11 : YFY

Peak	Size [bp]	Conc. [pg/μl]	Molarity [pmol/l]	Observations
1	35	125.00	5,411.3	Lower Marker
2	276	81.05	444.2	
3	290	33.32	174.0	
4	305	34.62	172.1	
5	332	31.30	142.9	
6	344	18.80	82.8	
7	357	22.62	96.0	
8	375	15.31	61.8	
9	384	18.97	74.9	
10	406	16.73	62.5	
11	421	11.43	41.2	
12	462	10.54	34.5	
13	501	6.02	18.2	
14	10,380	75.00	10.9	Upper Marker
15	12,356	0.00	0.0	
16	21,312	0.00	0.0	

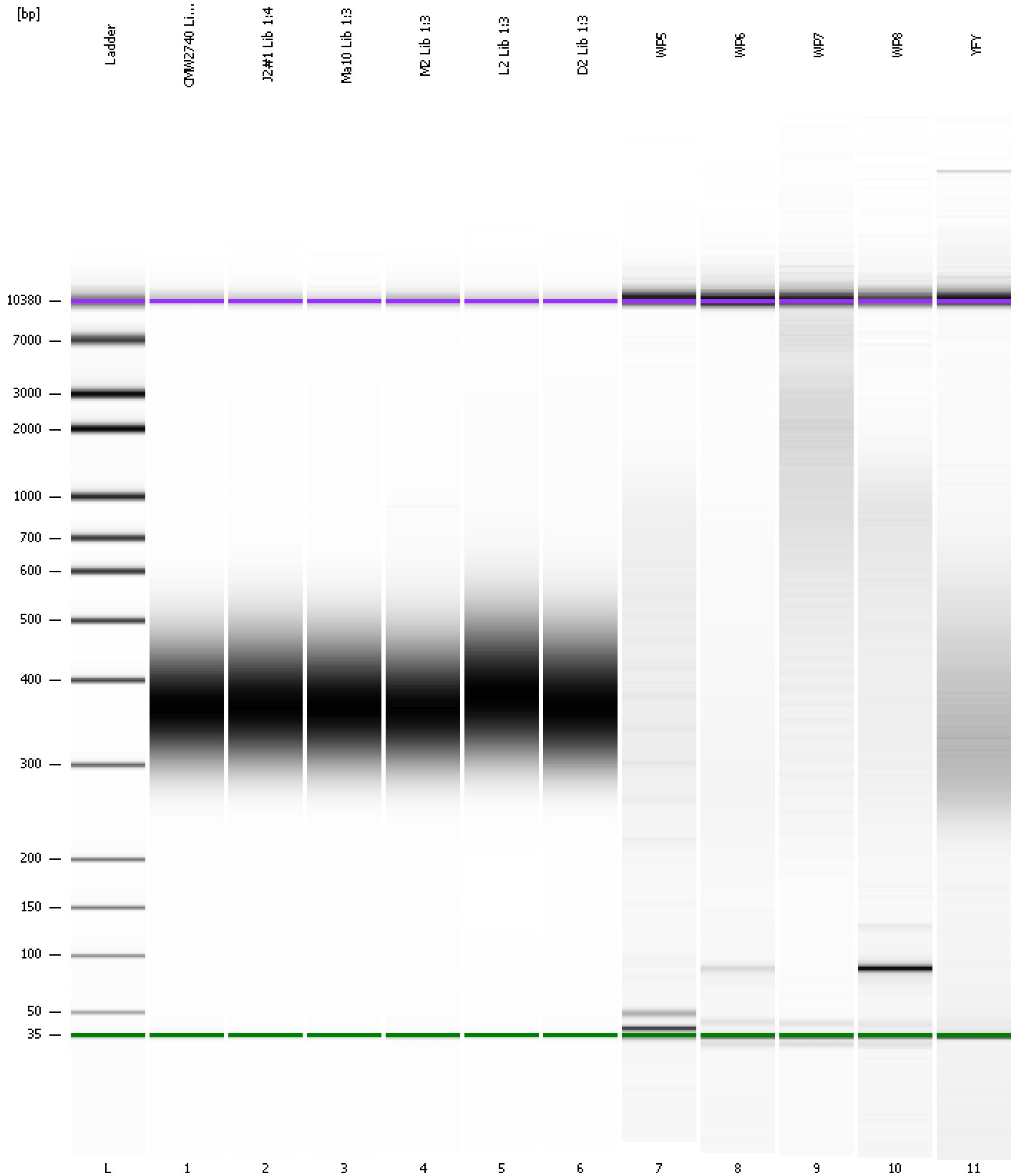
Region table for sample 11 : YFY

From [bp]	To [bp]	Average Size [bp]	Molarity [pmol/l]	Conc. [pg/μl]	Corr. Area	% of Total	Size distribution in CV [%]	Color
230	612	368	2,266.2	512.88	362.2	92	23.0	Blue

Assay Class: High Sensitivity DNA Assay
Data Path: C:\...ents and Settings\Bioanalyzer\2012-06-06\2012-06-06_001.xad

Created: 6/6/2012 9:24:54 AM
Modified: 6/6/2012 10:15:09 AM

Gel Image



Assay Class: High Sensitivity DNA Assay
 Data Path: C:\...ents and Settings\Bioanalyzer\2012-06-06\2012-06-06_001.xad

Created: 6/6/2012 9:24:54 AM
 Modified: 6/6/2012 10:15:09 AM

Run Logbook

Description	Number	Source	Category	Sub Category	Time	Time Zone	User	Host
Run ended on port 1 (Number of wells acquired: 12)		Instrument	Run		6/6/2012 10:06:13 AM	(GMT --07:00) Pacific Standard Time	UC Davis	D8XSMGH1
Run started on port 1 (File: C:\Documents and Settings\Bioanalyzer\2012-06-06\2012-06-06_001.xad)		Instrument	Run		6/6/2012 9:24:59 AM	(GMT --07:00) Pacific Standard Time	UC Davis	D8XSMGH1
Product Number : G2938B		Instrument	Run		6/6/2012 9:24:59 AM	(GMT --07:00) Pacific Standard Time	UC Davis	D8XSMGH1
Name :		Instrument	Run		6/6/2012 9:24:59 AM	(GMT --07:00) Pacific Standard Time	UC Davis	D8XSMGH1
Vendor : Agilent Technologies		Instrument	Run		6/6/2012 9:24:59 AM	(GMT --07:00) Pacific Standard Time	UC Davis	D8XSMGH1
Serial# : DE13701086		Instrument	Run		6/6/2012 9:24:59 AM	(GMT --07:00) Pacific Standard Time	UC Davis	D8XSMGH1
Firmware : C.01.069		Instrument	Run		6/6/2012 9:24:59 AM	(GMT --07:00) Pacific Standard Time	UC Davis	D8XSMGH1
Cartridge : Electrode		Instrument	Run		6/6/2012 9:24:59 AM	(GMT --07:00) Pacific Standard Time	UC Davis	D8XSMGH1