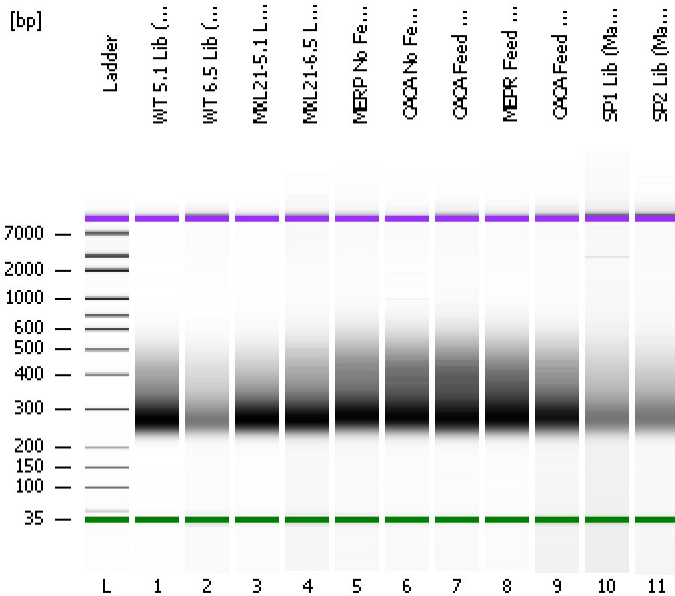


Assay Class: High Sensitivity DNA Assay
Data Path: C:\...ents and Settings\Bioanalyzer\2012-06-06\2012-06-06_002.xad

Created: 6/6/2012 3:06:18 PM
Modified: 6/6/2012 3:52:39 PM

Electrophoresis File Run Summary



Instrument Information:

Instrument Name: DE13701086 Firmware: C.01.069
Serial#: DE13701086 Type: G2938B

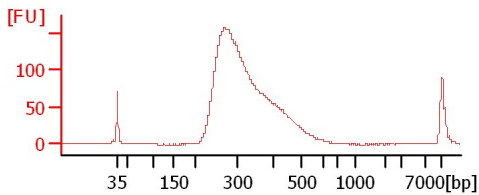
Assay Information:

Assay Origin Path: C:\Program Files\Agilent\2100 bioanalyzer\2100 expert\assays\dsDNA\High Sensitivity DNA.xsy
Assay Class: High Sensitivity DNA Assay
Version: 1.03
Assay Comments: Copyright © 2003-2010 Agilent Technologies

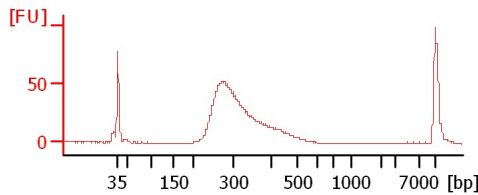
Chip Information:

Chip Lot #:
Reagent Kit Lot #:
Chip Comments:

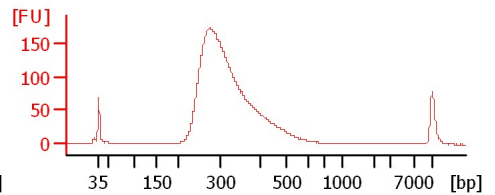
WT 5.1 Lib (Lorence) 6/6/12



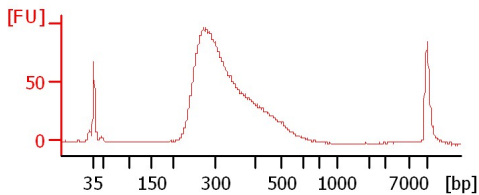
WT 6.5 Lib (Lorence) 6/6/12



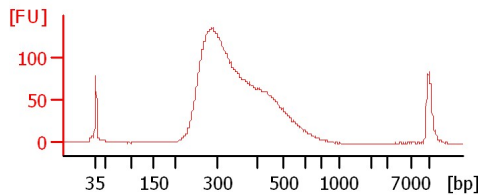
MXL21-5.1 Lib (Lorence) 6/6/12



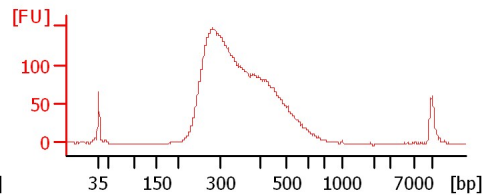
MXL21-6.5 Lib (Lorence) 6/6/12



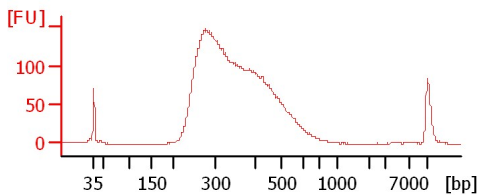
MERP No Feed Lib (Marisco) 6/6/12



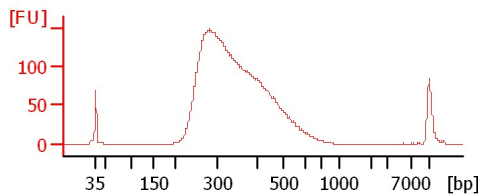
CACA No Feed Lib (Marisco) 6/6/12



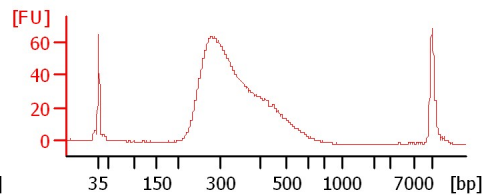
CACA Feed Diet (Marisco) 6/6/12



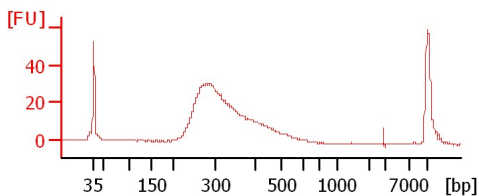
MEPR Feed OH (Marisco) 6/6/12



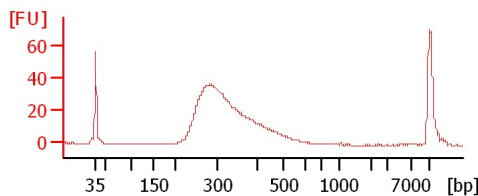
CACA Feed OH (Marisco) 6/6/12



SP1 Lib (Manoharan) 6/6/12



SP2 Lib (Manoharan) 6/6/12



Assay Class: High Sensitivity DNA Assay
 Data Path: C:\...ents and Settings\Bioanalyzer\2012-06-06\2012-06-06_002.xad

Created: 6/6/2012 3:06:18 PM
 Modified: 6/6/2012 3:52:39 PM

Electrophoresis File Run Summary (Chip Summary)

Sample Name	Sample Comment	Rest. Digest	Status	Observation	Result Label	Result Color
WT 5.1 Lib (Lorence) 6/6/12		<input type="checkbox"/>	✓			
WT 6.5 Lib (Lorence) 6/6/12		<input type="checkbox"/>	✓			
MXL21-5.1 Lib (Lorence) 6/6/12		<input type="checkbox"/>	✓			
MXL21-6.5 Lib (Lorence) 6/6/12		<input type="checkbox"/>	✓			
MERP No Feed Lib (Marisco) 6/6/12		<input type="checkbox"/>	✓			
CACA No Feed Lib (Marisco) 6/6/12		<input type="checkbox"/>	✓			
CACA Feed Diet (Marisco) 6/6/12		<input type="checkbox"/>	✓			
MEPR Feed OH (Marisco) 6/6/12		<input type="checkbox"/>	✓			
CACA Feed OH (Marisco) 6/6/12		<input type="checkbox"/>	✓			
SP1 Lib (Manoharan) 6/6/12		<input type="checkbox"/>	✓			
SP2 Lib (Manoharan) 6/6/12		<input type="checkbox"/>	✓			
Ladder		<input type="checkbox"/>	✓			

Chip Lot #

Reagent Kit Lot #

Chip Comments :

Assay Class: High Sensitivity DNA Assay
Data Path: C:\...ents and Settings\Bioanalyzer\2012-06-06\2012-06-06_002.xad

Created: 6/6/2012 3:06:18 PM
Modified: 6/6/2012 3:52:39 PM

Electrophoresis Assay Details

General Analysis Settings

Number of Available Sample and Ladder Wells (Max.) : 12
Minimum Visible Range [s] : 32
Maximum Visible Range [s] : 138
Start Analysis Time Range [s] : 33
End Analysis Time Range [s] : 137.5
Ladder Concentration [pg/μl] : 1950
Uses Standard Area for Ladder Fragments
Lower Marker Concentration [pg/μl] : 125
Upper Marker Concentration [pg/μl] : 75
Used Upper Marker for Quantitation
Standard Curve Fit is Point to Point
Show Data Aligned to Lower and Upper Marker

Integrator Settings

Integration Start Time [s] : 33.05
Integration End Time [s] : 137
Slope Threshold : 0.8
Height Threshold [FU] : 5
Area Threshold : 0.1
Width Threshold [s] : 0.6
Baseline Plateau [s] : 0.5

Filter Settings

Filter Width [s] : 0.5
Polynomial Order : 4

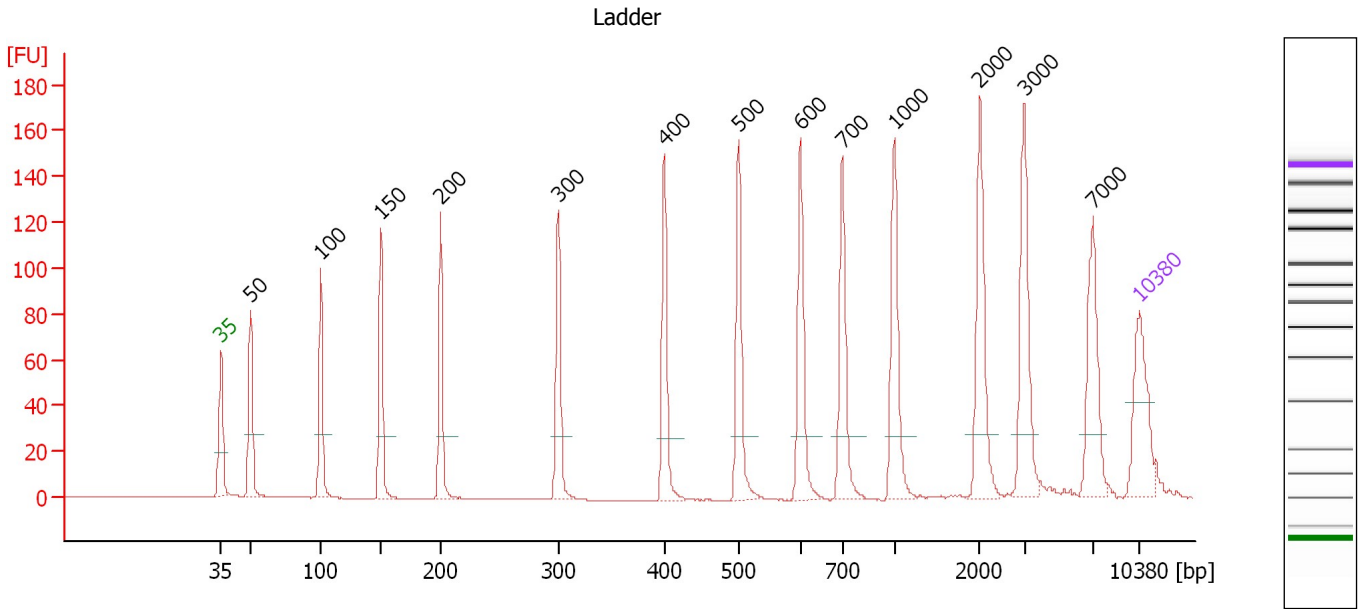
Ladder

Ladder Peak	Size	Area
1	35	160
2	50	210
3	100	208
4	150	221
5	200	242
6	300	270
7	400	305
8	500	306
9	600	336
10	700	321
11	1000	366
12	2000	413
13	3000	411
14	7000	400
15	10380	214

Assay Class: High Sensitivity DNA Assay
 Data Path: C:\...ents and Settings\Bioanalyzer\2012-06-06\2012-06-06_002.xad

Created: 6/6/2012 3:06:18 PM
 Modified: 6/6/2012 3:52:39 PM

Electropherogram Summary



Overall Results for Ladder

Noise: 0.1

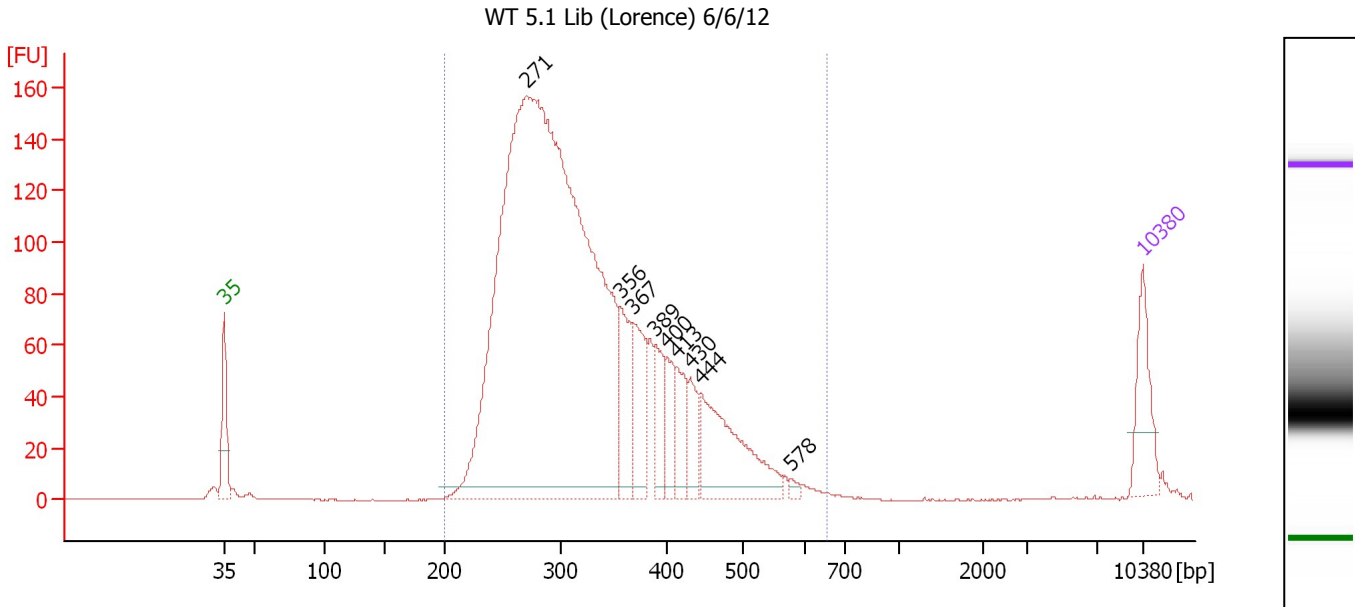
Peak table for Ladder

Peak	Size [bp]	Conc. [pg/μl]	Molarity [pmol/l]	Observations
1	35	125.00	5,411.3	Lower Marker
2	50	150.00	4,545.5	Ladder Peak
3	100	150.00	2,272.7	Ladder Peak
4	150	150.00	1,515.2	Ladder Peak
5	200	150.00	1,136.4	Ladder Peak
6	300	150.00	757.6	Ladder Peak
7	400	150.00	568.2	Ladder Peak
8	500	150.00	454.5	Ladder Peak
9	600	150.00	378.8	Ladder Peak
10	700	150.00	324.7	Ladder Peak
11	1,000	150.00	227.3	Ladder Peak
12	2,000	150.00	113.6	Ladder Peak
13	3,000	150.00	75.8	Ladder Peak
14	7,000	150.00	32.5	Ladder Peak
15	10,380	75.00	10.9	Upper Marker

Assay Class: High Sensitivity DNA Assay
 Data Path: C:\...ents and Settings\Bioanalyzer\2012-06-06\2012-06-06_002.xad

Created: 6/6/2012 3:06:18 PM
 Modified: 6/6/2012 3:52:39 PM

Electropherogram Summary Continued ...



Overall Results for sample 1 : WT 5.1 Lib (Lorence) 6/6/12

Number of peaks found: 9 Corr. Area 1: 2,678.8
 Noise: 0.2

Peak table for sample 1 : WT 5.1 Lib (Lorence) 6/6/12

Peak	Size [bp]	Conc. [pg/μl]	Molarity [pmol/l]	Observations
1	35	125.00	5,411.3	Lower Marker
2	271	2,711.48	15,173.2	
3	356	123.43	526.0	
4	367	129.21	533.3	
5	389	77.32	301.4	
6	400	62.94	238.6	
7	413	73.07	268.4	
8	430	56.43	198.7	
9	444	227.06	775.0	
10	578	8.00	21.0	
11	10,380	75.00	10.9	Upper Marker

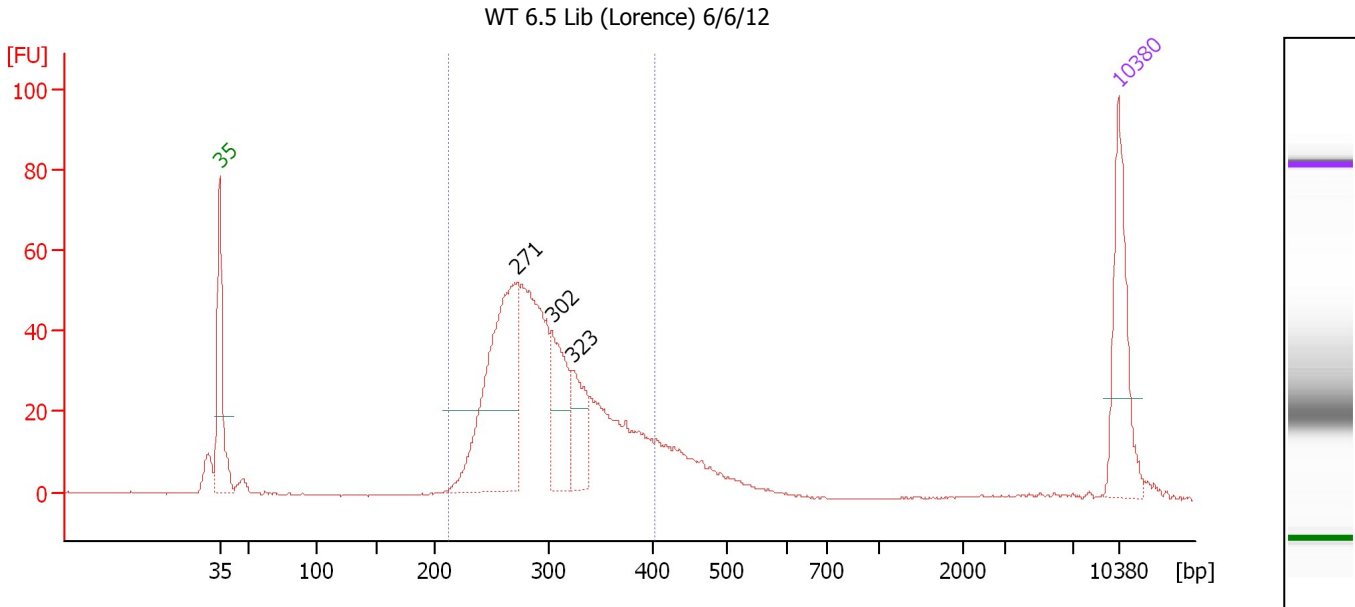
Region table for sample 1 : WT 5.1 Lib (Lorence) 6/6/12

From [bp]	To [bp]	Average Size [bp]	Molarity [pmol/l]	Conc. [pg/μl]	Corr. Area	% of Total	Size distribution in CV [%]	Color
200	656	328	16,847.9	3,427.80	2,678.8	99	22.9	Blue

Assay Class: High Sensitivity DNA Assay
 Data Path: C:\...ents and Settings\Bioanalyzer\2012-06-06\2012-06-06_002.xad

Created: 6/6/2012 3:06:18 PM
 Modified: 6/6/2012 3:52:39 PM

Electropherogram Summary Continued ...



Setpoint Deviations for sample 2 : WT 6.5 Lib (Lorence) 6/6/12

Height Threshold [FU] : 20

Overall Results for sample 2 : WT 6.5 Lib (Lorence) 6/6/12

Number of peaks found: 3 Corr. Area 1: 709.5
 Noise: 0.1

Peak table for sample 2 : WT 6.5 Lib (Lorence) 6/6/12

Peak	Size [bp]	Conc. [pg/µl]	Molarity [pmol/l]	Observations
1	35	125.00	5,411.3	Lower Marker
2	271	274.75	1,534.4	
3	302	96.97	486.3	
4	323	59.66	280.1	
5	10,380	75.00	10.9	Upper Marker

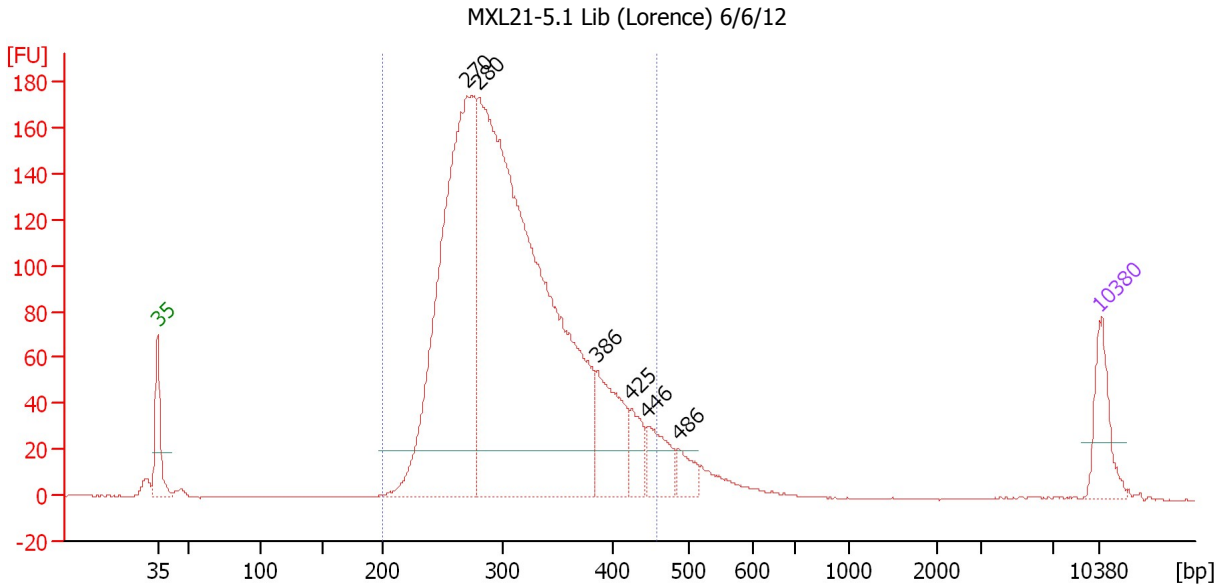
Region table for sample 2 : WT 6.5 Lib (Lorence) 6/6/12

From [bp]	To [bp]	Average Size [bp]	Molarity [pmol/l]	Conc. [pg/µl]	Corr. Area	% of Total	Size distribution in CV [%]	Color
213	401	299	4,132.7	796.26	709.5	85	14.4	Blue

Assay Class: High Sensitivity DNA Assay
 Data Path: C:\...ents and Settings\Bioanalyzer\2012-06-06\2012-06-06_002.xad

Created: 6/6/2012 3:06:18 PM
 Modified: 6/6/2012 3:52:39 PM

Electropherogram Summary Continued ...



Setpoint Deviations for sample 3 : MXL21-5.1 Lib (Lorence) 6/6/12

Height Threshold [FU] : 20

Overall Results for sample 3 : MXL21-5.1 Lib (Lorence) 6/6/12

Number of peaks found: 6 Corr. Area 1: 2,589.4
 Noise: 0.2

Peak table for sample 3 : MXL21-5.1 Lib (Lorence) 6/6/12

Peak	Size [bp]	Conc. [pg/μl]	Molarity [pmol/l]	Observations
1	35	125.00	5,411.3	Lower Marker
2	270	1,189.78	6,680.6	
3	280	2,019.42	10,935.2	
4	386	190.43	747.1	
5	425	64.95	231.5	
6	446	87.46	297.1	
7	486	42.24	131.8	
8	10,380	75.00	10.9	Upper Marker

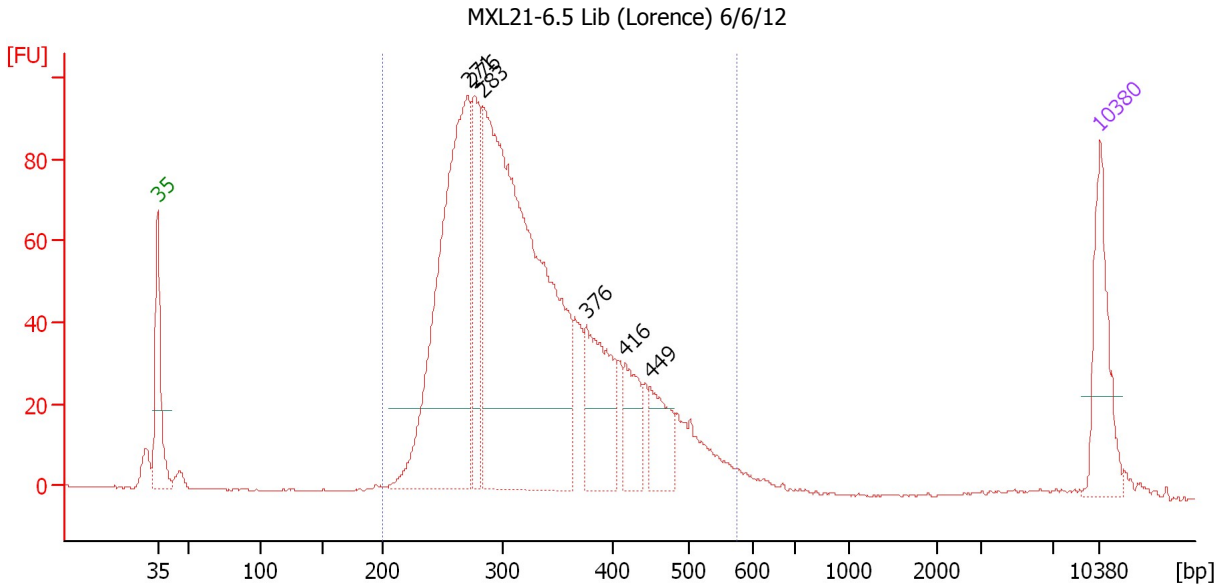
Region table for sample 3 : MXL21-5.1 Lib (Lorence) 6/6/12

From [bp]	To [bp]	Average Size [bp]	Molarity [pmol/l]	Conc. [pg/μl]	Corr. Area	% of Total	Size distribution in CV [%]	Color
200	458	310	17,157.3	3,387.00	2,589.4	93	16.9	Blue

Assay Class: High Sensitivity DNA Assay
 Data Path: C:\...ents and Settings\Bioanalyzer\2012-06-06\2012-06-06_002.xad

Created: 6/6/2012 3:06:18 PM
 Modified: 6/6/2012 3:52:39 PM

Electropherogram Summary Continued ...



Setpoint Deviations for sample 4 : MXL21-6.5 Lib (Lorence) 6/6/12

Height Threshold [FU] : 20

Overall Results for sample 4 : MXL21-6.5 Lib (Lorence) 6/6/12

Number of peaks found: 6 Corr. Area 1: 1,610.7
 Noise: 0.2

Peak table for sample 4 : MXL21-6.5 Lib (Lorence) 6/6/12

Peak	Size [bp]	Conc. [pg/μl]	Molarity [pmol/l]	Observations
1	35	125.00	5,411.3	Lower Marker
2	271	536.44	3,002.2	
3	276	141.06	774.2	
4	283	876.83	4,696.9	
5	376	133.82	539.4	
6	416	58.13	211.7	
7	449	58.36	197.0	
8	10,380	75.00	10.9	Upper Marker

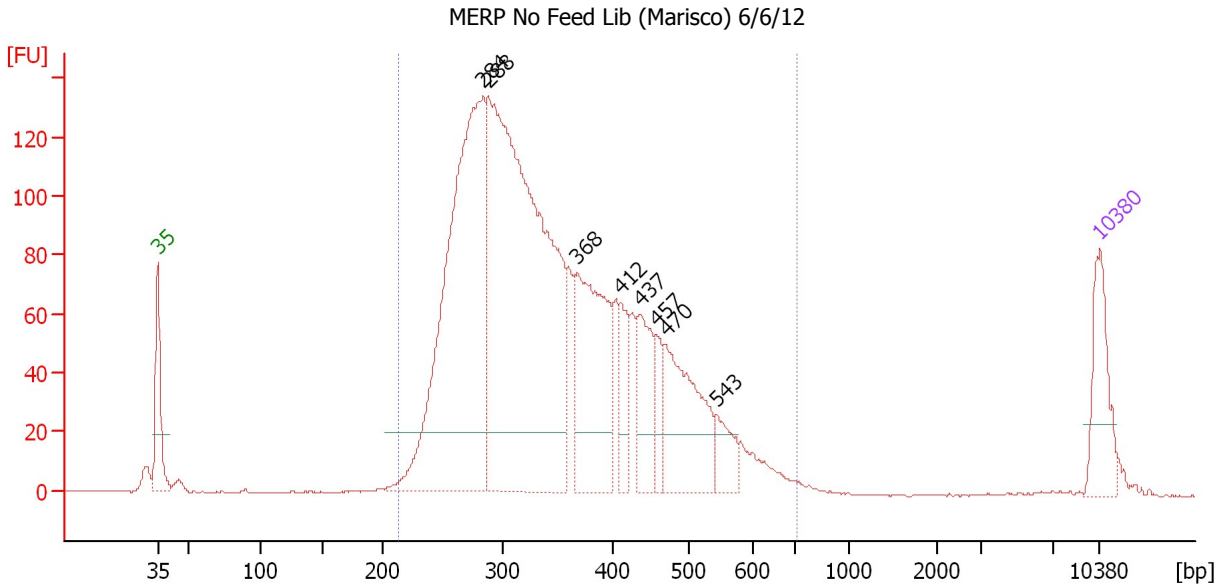
Region table for sample 4 : MXL21-6.5 Lib (Lorence) 6/6/12

From [bp]	To [bp]	Average Size [bp]	Molarity [pmol/l]	Conc. [pg/μl]	Corr. Area	% of Total	Size distribution in CV [%]	Color
200	576	329	9,552.6	1,952.70	1,610.7	96	22.4	Blue

Assay Class: High Sensitivity DNA Assay
 Data Path: C:\...ents and Settings\Bioanalyzer\2012-06-06\2012-06-06_002.xad

Created: 6/6/2012 3:06:18 PM
 Modified: 6/6/2012 3:52:39 PM

Electropherogram Summary Continued ...



Setpoint Deviations for sample 5 : MERP No Feed Lib (Marisco) 6/6/12

Height Threshold [FU] : 20

Overall Results for sample 5 : MERP No Feed Lib (Marisco) 6/6/12

Number of peaks found: 8 Corr. Area 1: 2,616.3
 Noise: 0.2

Peak table for sample 5 : MERP No Feed Lib (Marisco) 6/6/12

Peak	Size [bp]	Conc. [pg/µl]	Molarity [pmol/l]	Observations
1	35	125.00	5,411.3	Lower Marker
2	284	840.92	4,494.2	
3	288	1,180.59	6,212.3	
4	368	305.80	1,259.4	
5	412	62.81	231.1	
6	437	106.48	369.6	
7	457	44.38	147.0	
8	470	197.74	637.6	
9	543	51.02	142.3	
10	10,380	75.00	10.9	Upper Marker

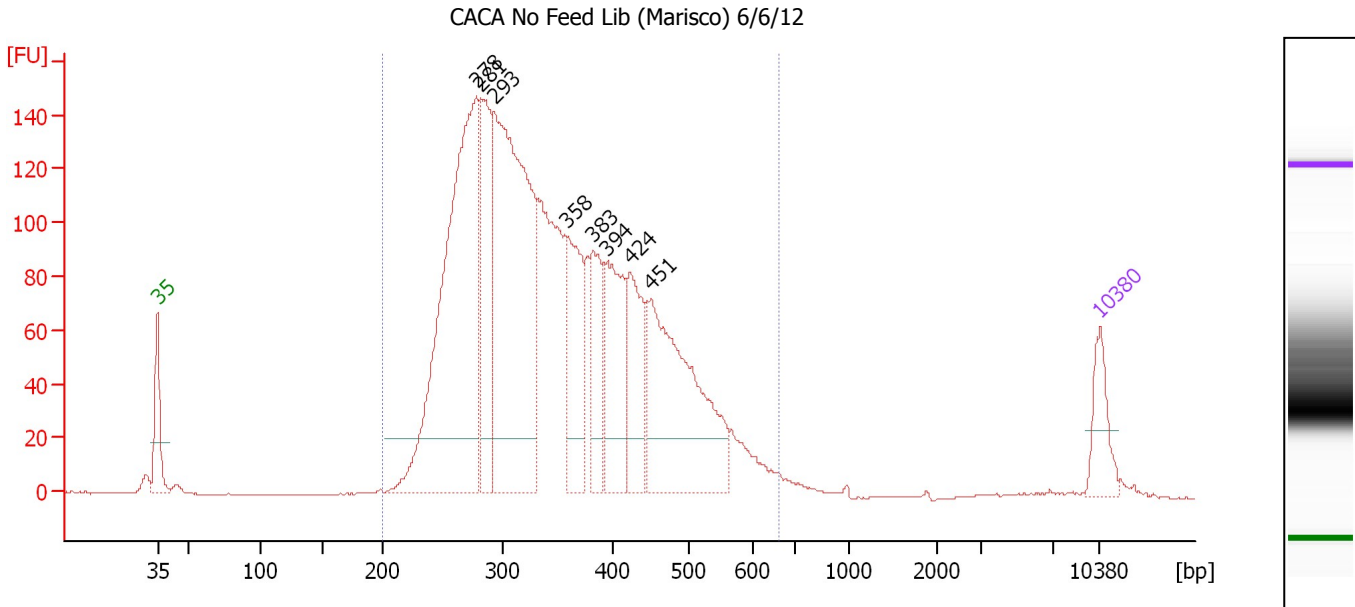
Region table for sample 5 : MERP No Feed Lib (Marisco) 6/6/12

From [bp]	To [bp]	Average Size [bp]	Molarity [pmol/l]	Conc. [pg/µl]	Corr. Area	% of Total	Size distribution in CV [%]	Color
213	705	355	13,893.2	3,002.02	2,616.3	95	25.6	Blue

Assay Class: High Sensitivity DNA Assay
 Data Path: C:\...ents and Settings\Bioanalyzer\2012-06-06\2012-06-06_002.xad

Created: 6/6/2012 3:06:18 PM
 Modified: 6/6/2012 3:52:39 PM

Electropherogram Summary Continued ...



Setpoint Deviations for sample 6 : CACAO No Feed Lib (Marisco) 6/6/12

Height Threshold [FU] : 20

Overall Results for sample 6 : CACAO No Feed Lib (Marisco) 6/6/12

Number of peaks found: 8 Corr. Area 1: 3,005.3
 Noise: 0.1

Peak table for sample 6 : CACAO No Feed Lib (Marisco) 6/6/12

Peak	Size [bp]	Conc. [pg/µl]	Molarity [pmol/l]	Observations
1	35	125.00	5,411.3	Lower Marker
2	278	1,155.28	6,300.9	
3	281	331.56	1,785.8	
4	293	1,109.70	5,742.2	
5	358	282.69	1,195.1	
6	383	182.55	722.7	
7	394	273.44	1,050.6	
8	424	211.36	755.0	
9	451	572.54	1,923.9	
10	10,380	75.00	10.9	Upper Marker

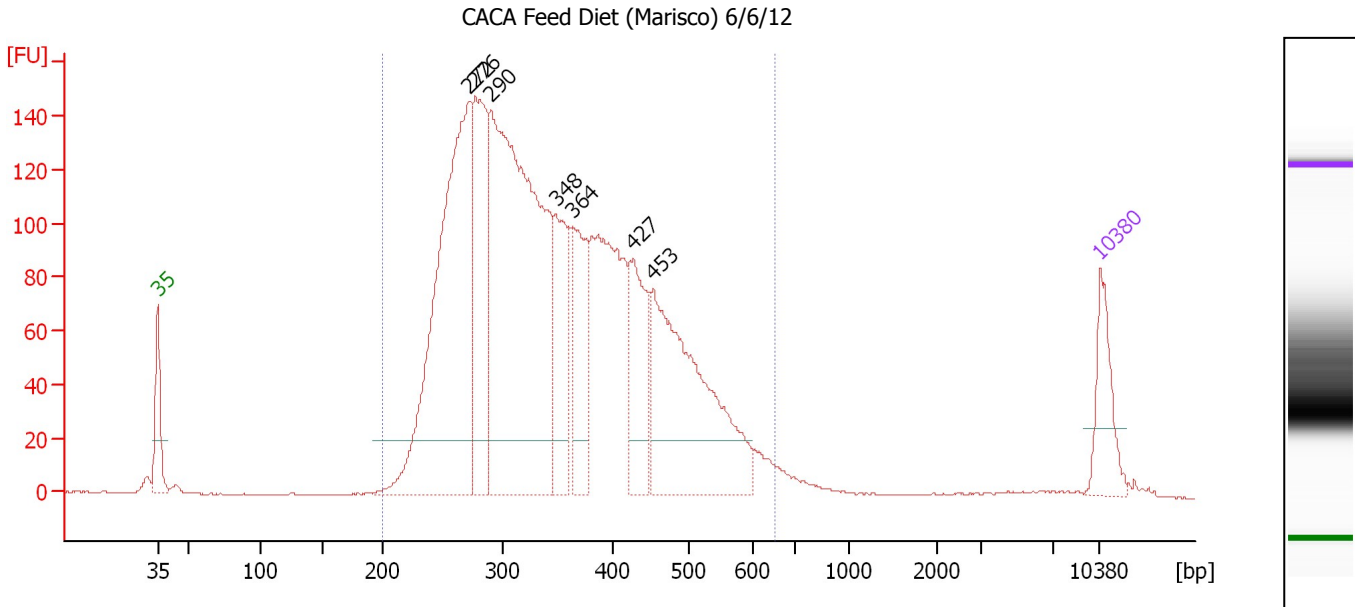
Region table for sample 6 : CACAO No Feed Lib (Marisco) 6/6/12

From [bp]	To [bp]	Average Size [bp]	Molarity [pmol/l]	Conc. [pg/µl]	Corr. Area	% of Total	Size distribution in CV [%]	Color
200	661	356	22,550.8	4,893.80	3,005.3	98	24.7	Blue

Assay Class: High Sensitivity DNA Assay
 Data Path: C:\...ents and Settings\Bioanalyzer\2012-06-06\2012-06-06_002.xad

Created: 6/6/2012 3:06:18 PM
 Modified: 6/6/2012 3:52:39 PM

Electropherogram Summary Continued ...



Setpoint Deviations for sample 7 : CACAF Feed Diet (Marisco) 6/6/12

Height Threshold [FU] : 20

Overall Results for sample 7 : CACAF Feed Diet (Marisco) 6/6/12

Number of peaks found: 7 Corr. Area 1: 3,197.7
 Noise: 0.2

Peak table for sample 7 : CACAF Feed Diet (Marisco) 6/6/12

Peak	Size [bp]	Conc. [pg/μl]	Molarity [pmol/l]	Observations
1	35	125.00	5,411.3	Lower Marker
2	272	844.68	4,709.1	
3	276	351.55	1,927.5	
4	290	1,118.73	5,854.6	
5	348	206.50	898.1	
6	364	189.43	789.6	
7	427	179.93	638.5	
8	453	481.80	1,610.4	
9	10,380	75.00	10.9	Upper Marker

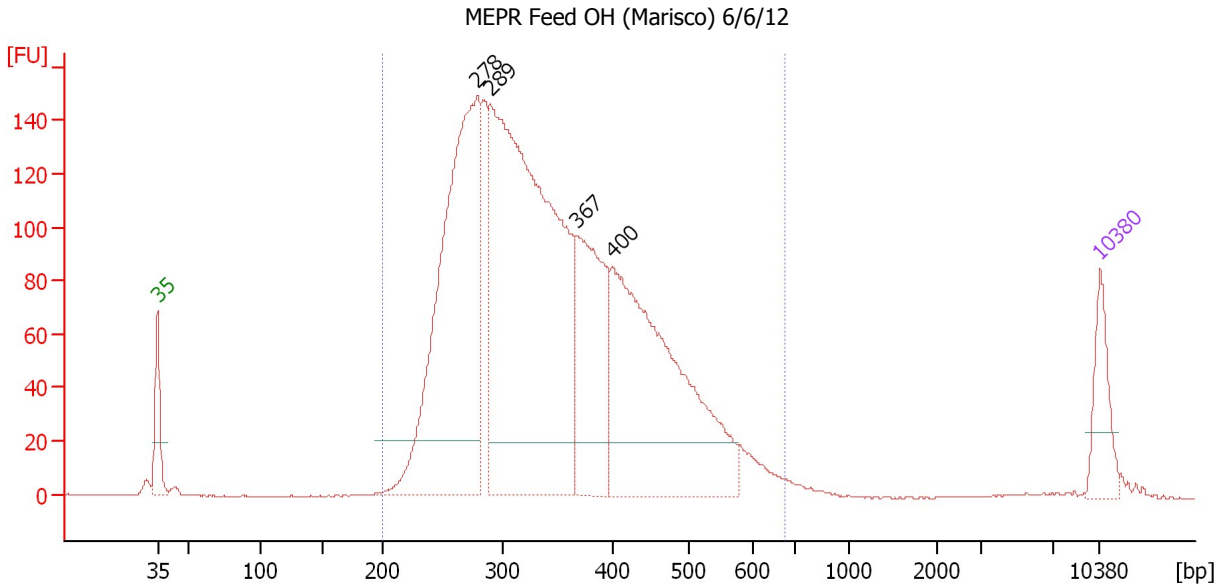
Region table for sample 7 : CACAF Feed Diet (Marisco) 6/6/12

From [bp]	To [bp]	Average Size [bp]	Molarity [pmol/l]	Conc. [pg/μl]	Corr. Area	% of Total	Size distribution in CV [%]	Color
200	654	356	17,556.2	3,794.92	3,197.7	97	25.3	Blue

Assay Class: High Sensitivity DNA Assay
 Data Path: C:\...ents and Settings\Bioanalyzer\2012-06-06\2012-06-06_002.xad

Created: 6/6/2012 3:06:18 PM
 Modified: 6/6/2012 3:52:39 PM

Electropherogram Summary Continued ...



Setpoint Deviations for sample 8 : MEPR Feed OH (Marisco) 6/6/12

Height Threshold [FU] : 20

Overall Results for sample 8 : MEPR Feed OH (Marisco) 6/6/12

Number of peaks found: 4 Corr. Area 1: 3,089.8
 Noise: 0.2

Peak table for sample 8 : MEPR Feed OH (Marisco) 6/6/12

Peak	Size [bp]	Conc. [pg/μl]	Molarity [pmol/l]	Observations
1	35	125.00	5,411.3	Lower Marker
2	278	1,014.65	5,522.5	
3	289	1,505.09	7,889.6	
4	367	380.48	1,570.5	
5	400	754.47	2,860.5	
6	10,380	75.00	10.9	Upper Marker

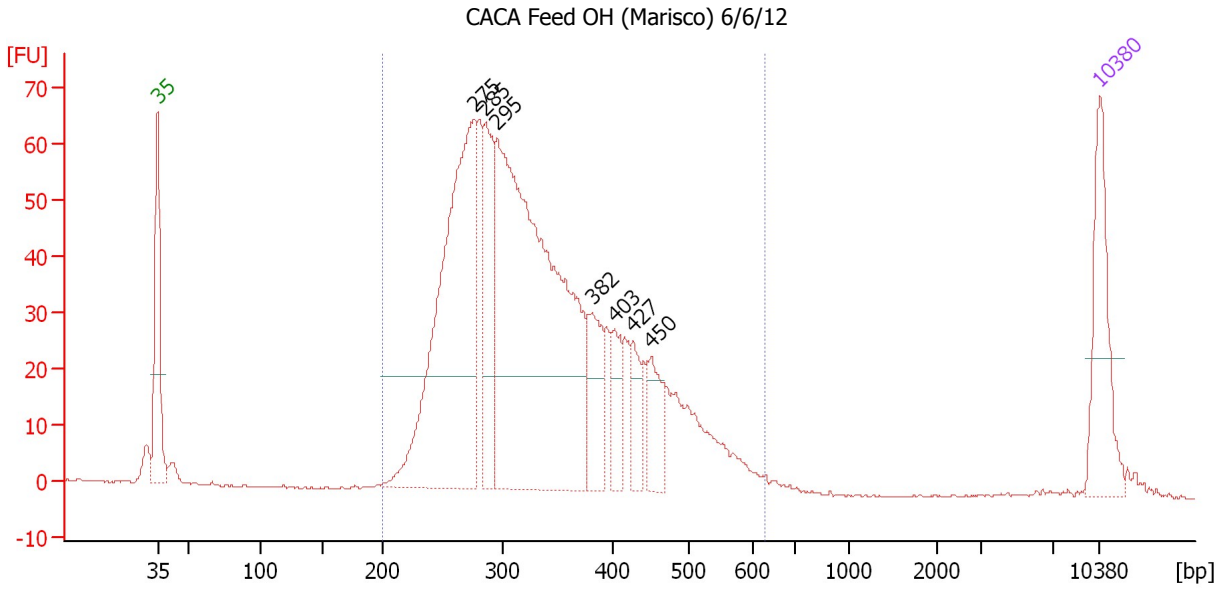
Region table for sample 8 : MEPR Feed OH (Marisco) 6/6/12

From [bp]	To [bp]	Average Size [bp]	Molarity [pmol/l]	Conc. [pg/μl]	Corr. Area	% of Total	Size distribution in CV [%]	Color
200	674	351	17,681.9	3,792.87	3,089.8	98	24.9	Blue

Assay Class: High Sensitivity DNA Assay
 Data Path: C:\...ents and Settings\Bioanalyzer\2012-06-06\2012-06-06_002.xad

Created: 6/6/2012 3:06:18 PM
 Modified: 6/6/2012 3:52:39 PM

Electropherogram Summary Continued ...



Setpoint Deviations for sample 9 : CACA Feed OH (Marisco) 6/6/12

Height Threshold [FU] : 20

Overall Results for sample 9 : CACA Feed OH (Marisco) 6/6/12

Number of peaks found: 7 Corr. Area 1: 1,183.9
 Noise: 0.1

Peak table for sample 9 : CACA Feed OH (Marisco) 6/6/12

Peak	Size [bp]	Conc. [pg/μl]	Molarity [pmol/l]	Observations
1	35	125.00	5,411.3	Lower Marker
2	275	463.48	2,550.5	
3	285	126.79	674.0	
4	295	698.66	3,591.9	
5	382	70.96	281.8	
6	403	42.25	159.0	
7	427	32.91	116.9	
8	450	46.74	157.4	
9	10,380	75.00	10.9	Upper Marker

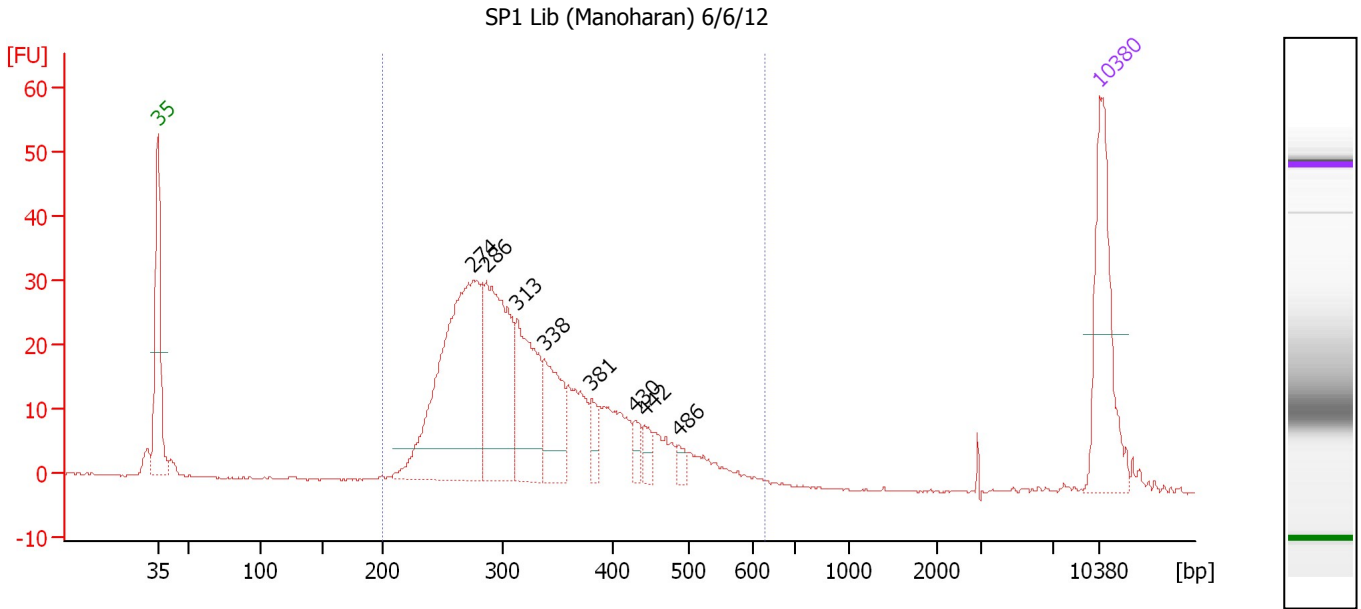
Region table for sample 9 : CACA Feed OH (Marisco) 6/6/12

From [bp]	To [bp]	Average Size [bp]	Molarity [pmol/l]	Conc. [pg/μl]	Corr. Area	% of Total	Size distribution in CV [%]	Color
200	631	340	8,134.7	1,702.75	1,183.9	97	23.8	Blue

Assay Class: High Sensitivity DNA Assay
 Data Path: C:\...ents and Settings\Bioanalyzer\2012-06-06\2012-06-06_002.xad

Created: 6/6/2012 3:06:18 PM
 Modified: 6/6/2012 3:52:39 PM

Electropherogram Summary Continued ...



Overall Results for sample 10 : SP1 Lib (Manoharan) 6/6/12

Number of peaks found: 8 Corr. Area 1: 523.0
 Noise: 0.2

Peak table for sample 10 : SP1 Lib (Manoharan) 6/6/12

Peak	Size [bp]	Conc. [pg/μl]	Molarity [pmol/l]	Observations
1	35	125.00	5,411.3	Lower Marker
2	274	278.47	1,537.1	
3	286	160.21	849.3	
4	313	103.85	503.1	
5	338	63.09	283.0	
6	381	14.68	58.4	
7	430	11.20	39.5	
8	442	11.59	39.7	
9	486	8.12	25.3	
10	10,380	75.00	10.9	Upper Marker

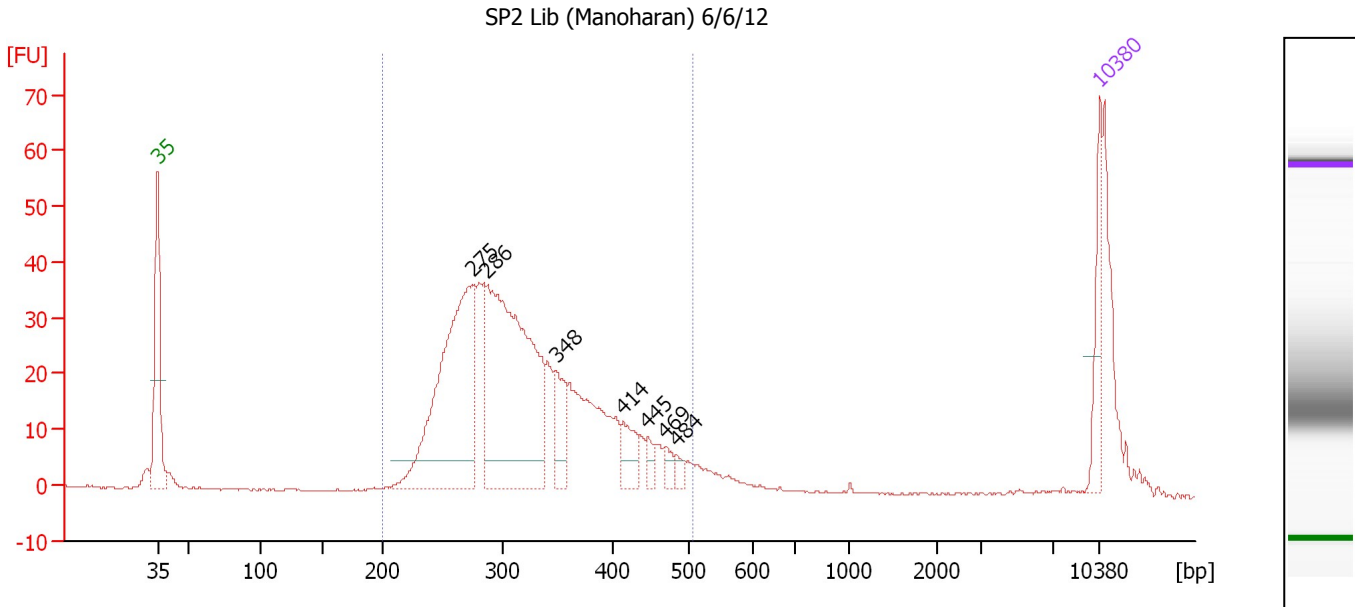
Region table for sample 10 : SP1 Lib (Manoharan) 6/6/12

From [bp]	To [bp]	Average Size [bp]	Molarity [pmol/l]	Conc. [pg/μl]	Corr. Area	% of Total	Size distribution in CV [%]	Color
200	629	331	3,974.1	815.62	523.0	96	23.1	Blue

Assay Class: High Sensitivity DNA Assay
 Data Path: C:\...ents and Settings\Bioanalyzer\2012-06-06\2012-06-06_002.xad

Created: 6/6/2012 3:06:18 PM
 Modified: 6/6/2012 3:52:39 PM

Electropherogram Summary Continued ...



Overall Results for sample 11 : SP2 Lib (Manoharan) 6/6/12

Number of peaks found: 7 Corr. Area 1: 606.4
 Noise: 0.2

Peak table for sample 11 : SP2 Lib (Manoharan) 6/6/12

Peak	Size [bp]	Conc. [pg/μl]	Molarity [pmol/l]	Observations
1	35	125.00	5,411.3	Lower Marker
2	275	679.28	3,747.0	
3	286	821.31	4,357.7	
4	348	87.63	381.2	
5	414	65.27	239.1	
6	445	23.68	80.5	
7	469	22.54	72.8	
8	484	17.06	53.4	
9	10,380	75.00	10.9	Upper Marker

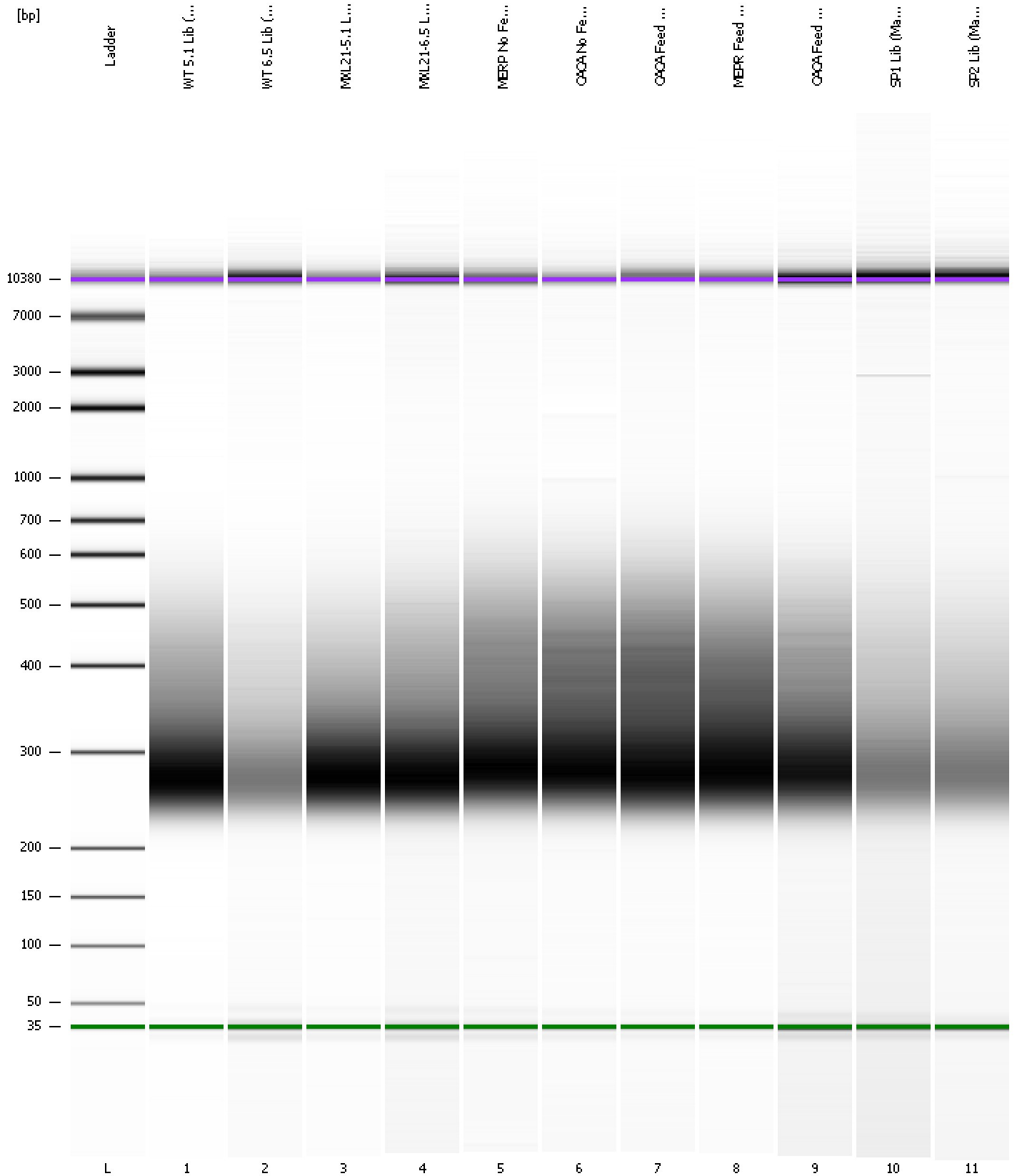
Region table for sample 11 : SP2 Lib (Manoharan) 6/6/12

From [bp]	To [bp]	Average Size [bp]	Molarity [pmol/l]	Conc. [pg/μl]	Corr. Area	% of Total	Size distribution in CV [%]	Color
200	507	323	11,704.0	2,379.35	606.4	85	19.6	Blue

Assay Class: High Sensitivity DNA Assay
Data Path: C:\...ents and Settings\Bioanalyzer\2012-06-06\2012-06-06_002.xad

Created: 6/6/2012 3:06:18 PM
Modified: 6/6/2012 3:52:39 PM

Gel Image



Assay Class: High Sensitivity DNA Assay Created: 6/6/2012 3:06:18 PM
 Data Path: C:\...ents and Settings\Bioanalyzer\2012-06-06\2012-06-06_002.xad Modified: 6/6/2012 3:52:39 PM

Run Logbook

Description	Number	Source	Category	Sub Category	Time	Time Zone	User	Host
Run ended on port 1 (Number of wells acquired: 12)		Instrument	Run		6/6/2012 3:47:37 PM	(GMT --07:00) Pacific Standard Time	UC Davis	D8XSMGH1
Run started on port 1 (File: C:\Documents and Settings\Bioanalyzer\2012-06-06\2012-06-06_002.xad)		Instrument	Run		6/6/2012 3:06:24 PM	(GMT --07:00) Pacific Standard Time	UC Davis	D8XSMGH1
Product Number : G2938B		Instrument	Run		6/6/2012 3:06:24 PM	(GMT --07:00) Pacific Standard Time	UC Davis	D8XSMGH1
Name :		Instrument	Run		6/6/2012 3:06:24 PM	(GMT --07:00) Pacific Standard Time	UC Davis	D8XSMGH1
Vendor : Agilent Technologies		Instrument	Run		6/6/2012 3:06:24 PM	(GMT --07:00) Pacific Standard Time	UC Davis	D8XSMGH1
Serial# : DE13701086		Instrument	Run		6/6/2012 3:06:24 PM	(GMT --07:00) Pacific Standard Time	UC Davis	D8XSMGH1
Firmware : C.01.069		Instrument	Run		6/6/2012 3:06:24 PM	(GMT --07:00) Pacific Standard Time	UC Davis	D8XSMGH1
Cartridge : Electrode		Instrument	Run		6/6/2012 3:06:24 PM	(GMT --07:00) Pacific Standard Time	UC Davis	D8XSMGH1