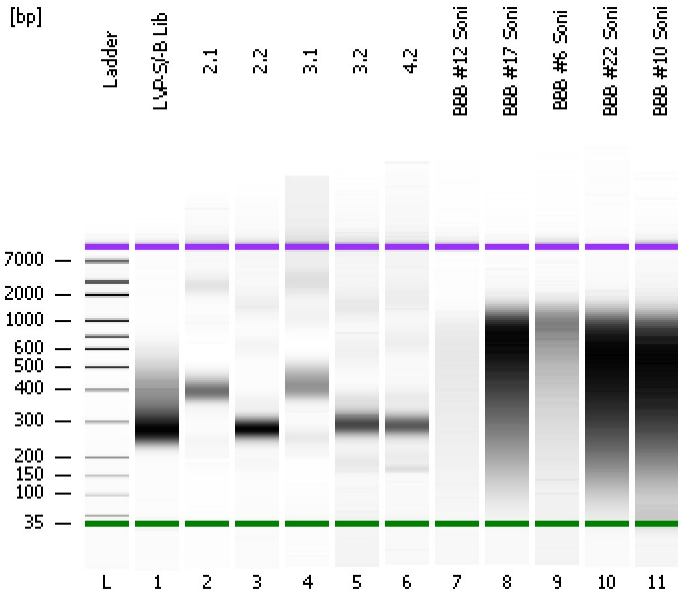


Assay Class: High Sensitivity DNA Assay
Data Path: C:\...ents and Settings\Bioanalyzer\2012-06-07\2012-06-07_001.xad

Created: 6/7/2012 11:56:27 AM
Modified: 6/7/2012 12:55:16 PM

Electrophoresis File Run Summary



Instrument Information:

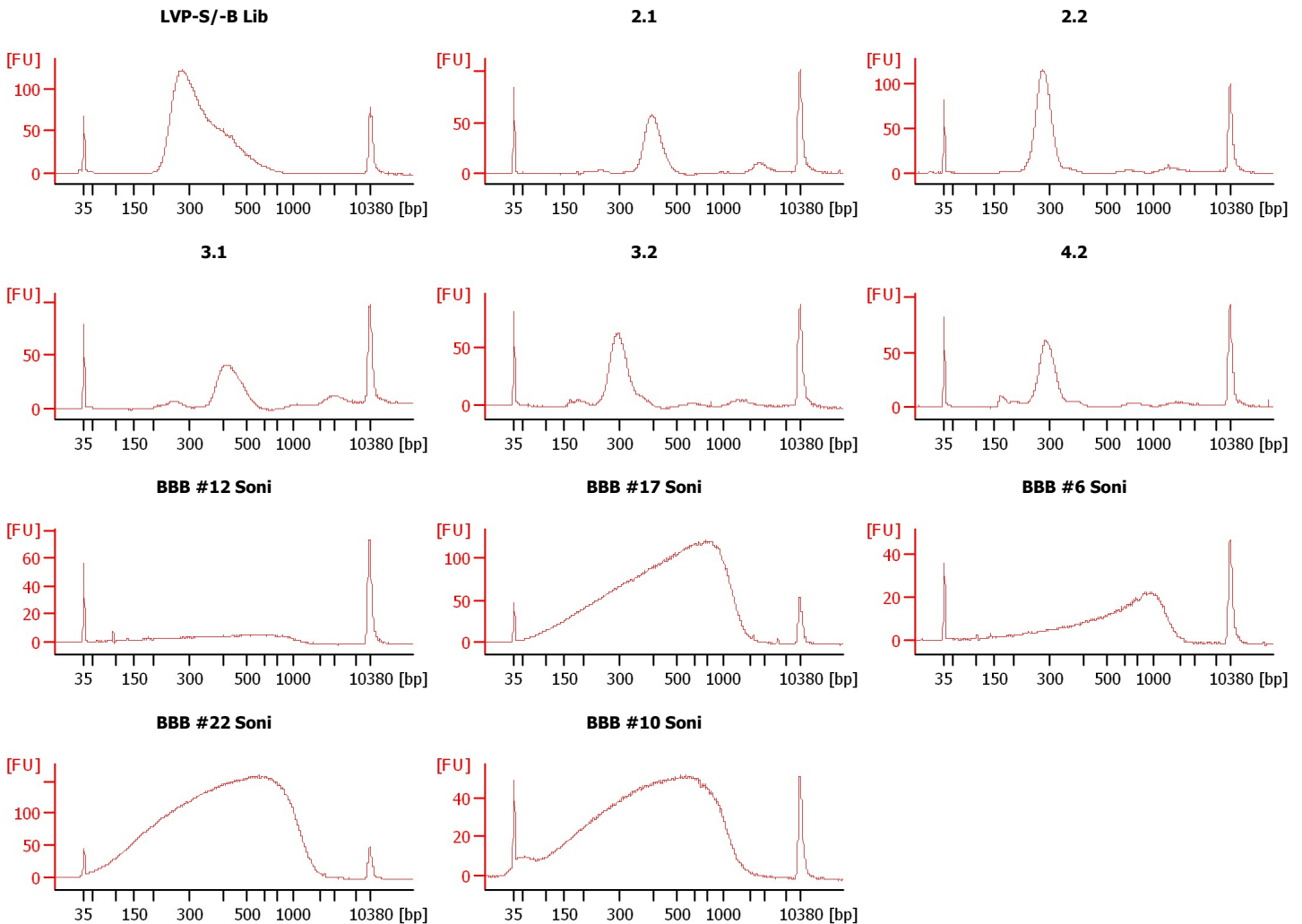
Instrument Name: DE13701086 Firmware: C.01.069
Serial#: DE13701086 Type: G2938B

Assay Information:

Assay Origin Path: C:\Program Files\Agilent\2100 bioanalyzer\2100 expert\assays\dsDNA\High Sensitivity DNA.xsy
Assay Class: High Sensitivity DNA Assay
Version: 1.03
Assay Comments: Copyright © 2003-2010 Agilent Technologies

Chip Information:

Chip Lot #: Reagent Kit Lot #: Chip Comments:



Assay Class: High Sensitivity DNA Assay
 Data Path: C:\...ents and Settings\Bioanalyzer\2012-06-07\2012-06-07_001.xad

Created: 6/7/2012 11:56:27 AM
 Modified: 6/7/2012 12:55:16 PM

Electrophoresis File Run Summary (Chip Summary)

Sample Name	Sample Comment	Rest. Digest	Status	Observation	Result Label	Result Color
LVP-S/-B Lib		<input type="checkbox"/>	✓			
2.1		<input type="checkbox"/>	✓			
2.2		<input type="checkbox"/>	✓			
3.1		<input type="checkbox"/>	✓			
3.2		<input type="checkbox"/>	✓			
4.2		<input type="checkbox"/>	✓			
BBB #12 Soni		<input type="checkbox"/>	✓			
BBB #17 Soni		<input type="checkbox"/>	✓			
BBB #6 Soni		<input type="checkbox"/>	✓			
BBB #22 Soni		<input type="checkbox"/>	✓			
BBB #10 Soni		<input type="checkbox"/>	✓			
Ladder		<input type="checkbox"/>	✓			

Chip Lot #

Reagent Kit Lot #

Chip Comments :

Assay Class: High Sensitivity DNA Assay
Data Path: C:\...ents and Settings\Bioanalyzer\2012-06-07\2012-06-07_001.xad

Created: 6/7/2012 11:56:27 AM
Modified: 6/7/2012 12:55:16 PM

Electrophoresis Assay Details

General Analysis Settings

Number of Available Sample and Ladder Wells (Max.) : 12
Minimum Visible Range [s] : 32
Maximum Visible Range [s] : 138
Start Analysis Time Range [s] : 33
End Analysis Time Range [s] : 137.5
Ladder Concentration [pg/μl] : 1950
Uses Standard Area for Ladder Fragments
Lower Marker Concentration [pg/μl] : 125
Upper Marker Concentration [pg/μl] : 75
Used Upper Marker for Quantitation
Standard Curve Fit is Point to Point
Show Data Aligned to Lower and Upper Marker

Integrator Settings

Integration Start Time [s] : 33.05
Integration End Time [s] : 137
Slope Threshold : 0.8
Height Threshold [FU] : 5
Area Threshold : 0.1
Width Threshold [s] : 0.6
Baseline Plateau [s] : 0.5

Filter Settings

Filter Width [s] : 0.5
Polynomial Order : 4

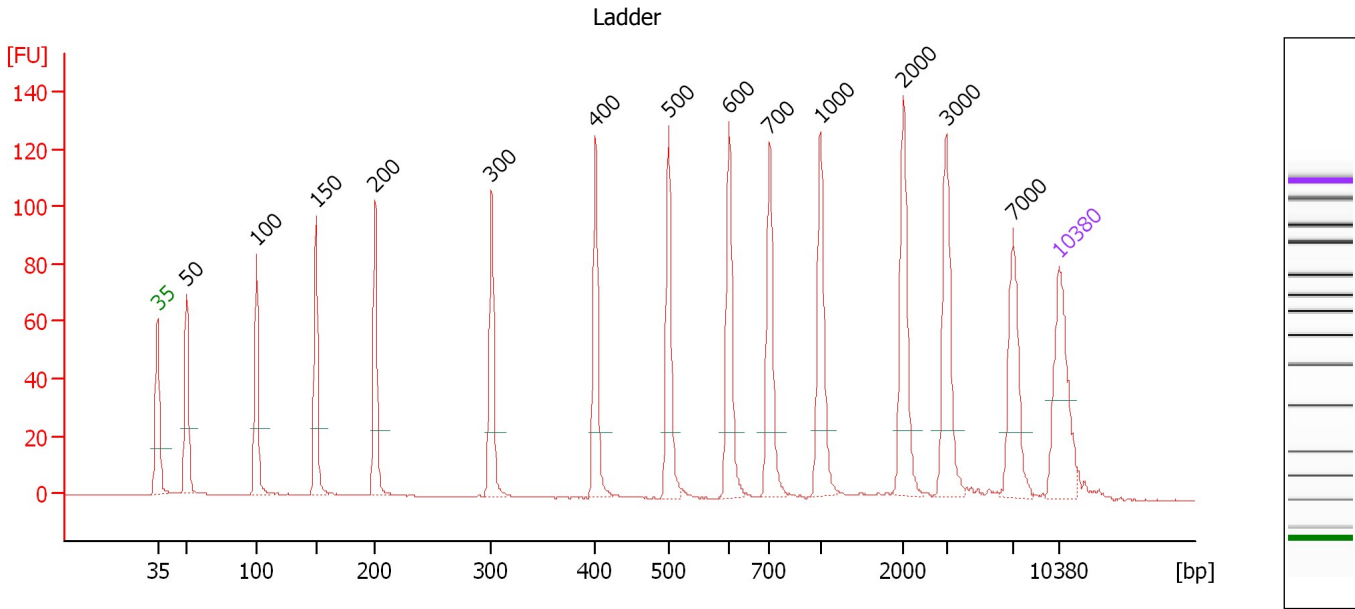
Ladder

Ladder Peak	Size	Area
1	35	160
2	50	210
3	100	208
4	150	221
5	200	242
6	300	270
7	400	305
8	500	306
9	600	336
10	700	321
11	1000	366
12	2000	413
13	3000	411
14	7000	400
15	10380	214

Assay Class: High Sensitivity DNA Assay
 Data Path: C:\...ents and Settings\Bioanalyzer\2012-06-07\2012-06-07_001.xad

Created: 6/7/2012 11:56:27 AM
 Modified: 6/7/2012 12:55:16 PM

Electropherogram Summary



Overall Results for Ladder

Noise: 0.1

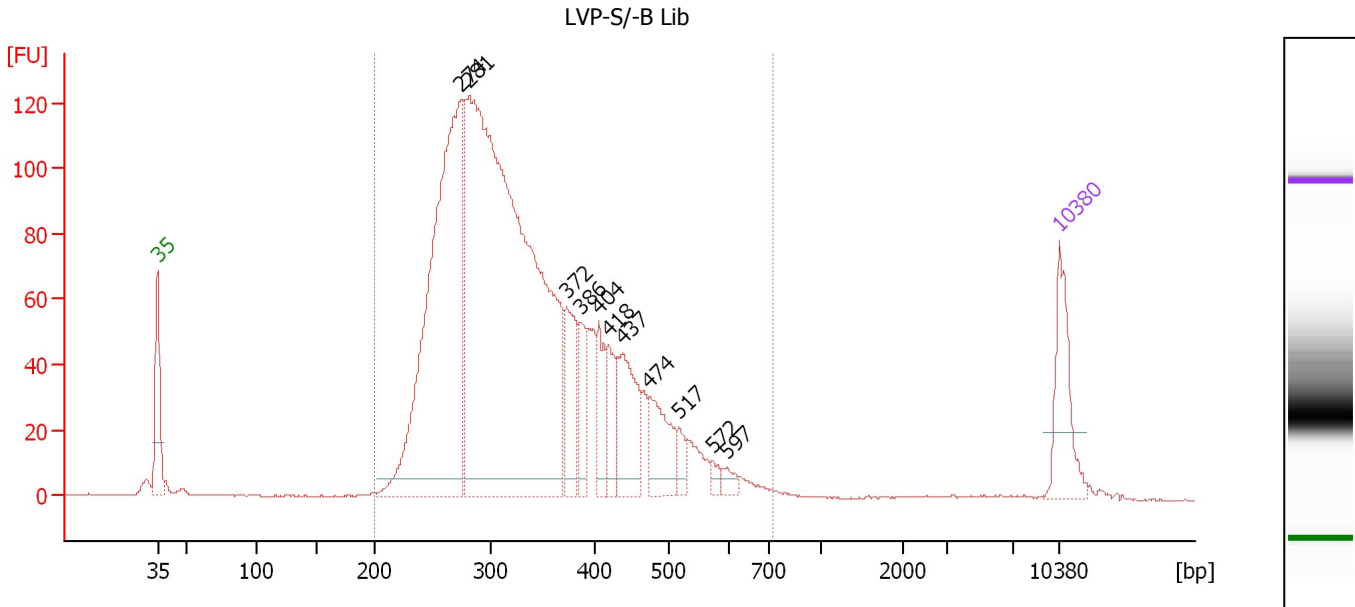
Peak table for Ladder

Peak	Size [bp]	Conc. [pg/μl]	Molarity [pmol/l]	Observations
1	35	125.00	5,411.3	Lower Marker
2	50	150.00	4,545.5	Ladder Peak
3	100	150.00	2,272.7	Ladder Peak
4	150	150.00	1,515.2	Ladder Peak
5	200	150.00	1,136.4	Ladder Peak
6	300	150.00	757.6	Ladder Peak
7	400	150.00	568.2	Ladder Peak
8	500	150.00	454.5	Ladder Peak
9	600	150.00	378.8	Ladder Peak
10	700	150.00	324.7	Ladder Peak
11	1,000	150.00	227.3	Ladder Peak
12	2,000	150.00	113.6	Ladder Peak
13	3,000	150.00	75.8	Ladder Peak
14	7,000	150.00	32.5	Ladder Peak
15	10,380	75.00	10.9	Upper Marker

Assay Class: High Sensitivity DNA Assay
 Data Path: C:\...ents and Settings\Bioanalyzer\2012-06-07\2012-06-07_001.xad

Created: 6/7/2012 11:56:27 AM
 Modified: 6/7/2012 12:55:16 PM

Electropherogram Summary Continued ...



Overall Results for sample 1 : LVP-S/-B Lib

Number of peaks found: 11 Corr. Area 1: 2,218.6
 Noise: 0.2

Peak table for sample 1 : LVP-S/-B Lib

Peak	Size [bp]	Conc. [pg/μl]	Molarity [pmol/l]	Observations
1	35	125.00	5,411.3	Lower Marker
2	274	773.72	4,280.4	
3	281	1,501.70	8,107.2	
4	372	103.49	421.5	
5	386	59.21	232.7	
6	404	62.66	235.0	
7	418	57.13	207.1	
8	437	120.53	417.7	
9	474	82.63	264.0	
10	517	22.38	65.5	
11	572	10.18	27.0	
12	597	13.00	33.0	
13	10,380	75.00	10.9	Upper Marker

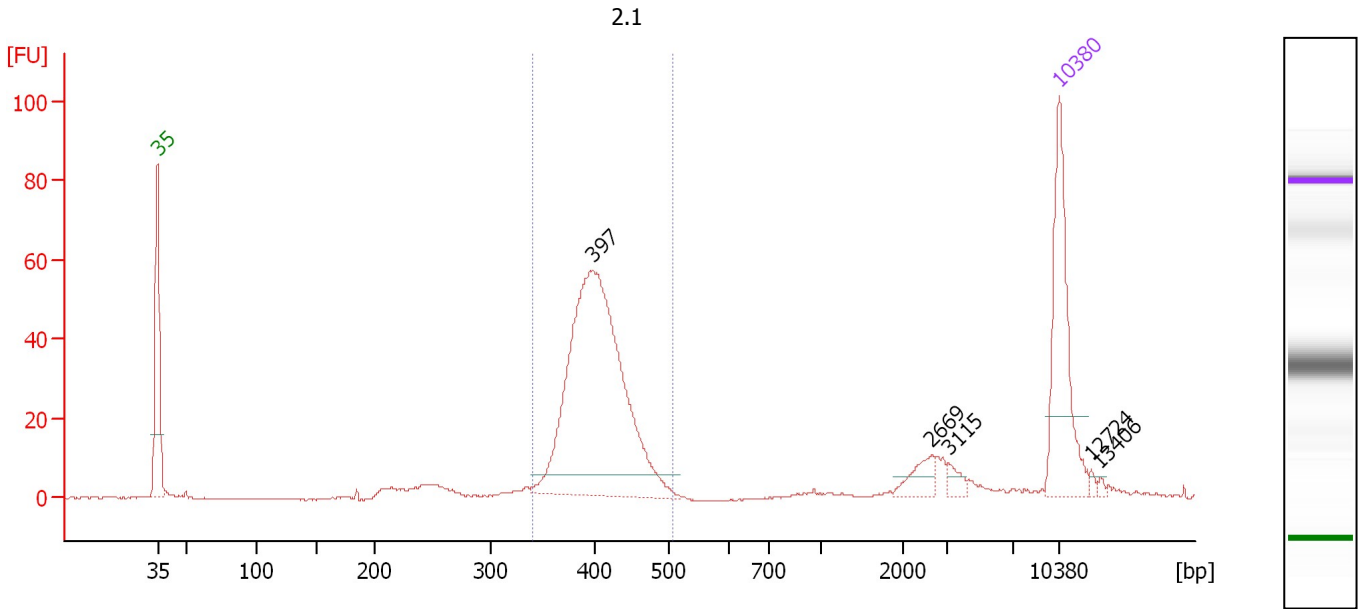
Region table for sample 1 : LVP-S/-B Lib

From [bp]	To [bp]	Average Size [bp]	Molarity [pmol/l]	Conc. [pg/μl]	Corr. Area	% of Total	Size distribution in CV [%]	Color
200	715	340	14,246.9	2,968.46	2,218.6	98	25.0	Blue

Assay Class: High Sensitivity DNA Assay
 Data Path: C:\...ents and Settings\Bioanalyzer\2012-06-07\2012-06-07_001.xad

Created: 6/7/2012 11:56:27 AM
 Modified: 6/7/2012 12:55:16 PM

Electropherogram Summary Continued ...



Overall Results for sample 2 : 2.1

Number of peaks found: 5 Corr. Area 1: 389.1
 Noise: 0.1

Peak table for sample 2 : 2.1

Peak	Size [bp]	Conc. [pg/μl]	Molarity [pmol/l]	Observations
1	35	125.00	5,411.3	Lower Marker
2	397	342.05	1,306.9	
3	2,669	14.02	8.0	
4	3,115	6.57	3.2	
5	10,380	75.00	10.9	Upper Marker
6	12,724	0.00	0.0	
7	13,406	0.00	0.0	

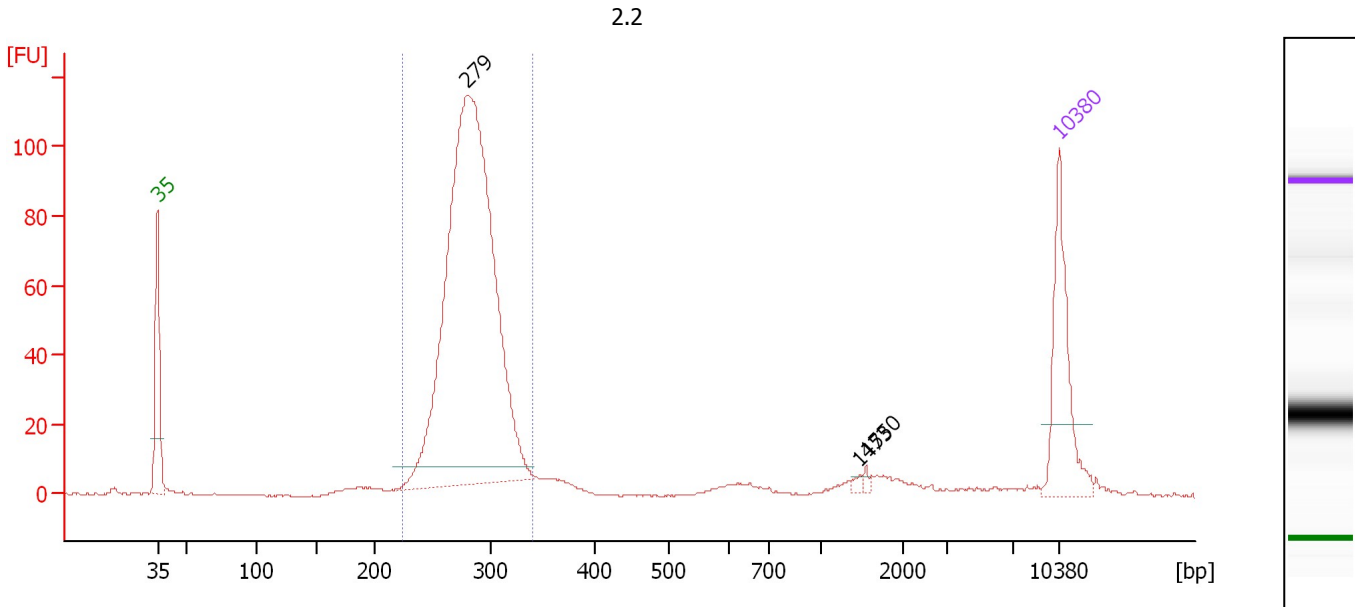
Region table for sample 2 : 2.1

From [bp]	To [bp]	Average Size [bp]	Molarity [pmol/l]	Conc. [pg/μl]	Corr. Area	% of Total	Size distribution in CV [%]	Color
339	508	406	1,312.0	349.77	389.1	76	7.6	Blue

Assay Class: High Sensitivity DNA Assay
 Data Path: C:\...ents and Settings\Bioanalyzer\2012-06-07\2012-06-07_001.xad

Created: 6/7/2012 11:56:27 AM
 Modified: 6/7/2012 12:55:16 PM

Electropherogram Summary Continued ...



Overall Results for sample 3 : 2.2

Number of peaks found: 3 Corr. Area 1: 807.2
 Noise: 0.2

Peak table for sample 3 : 2.2

Peak	Size [bp]	Conc. [pg/μl]	Molarity [pmol/l]	Observations
1	35	125.00	5,411.3	Lower Marker
2	279	818.50	4,439.2	
3	1,473	2.97	3.1	
4	1,550	2.69	2.6	
5	10,380	75.00	10.9	Upper Marker

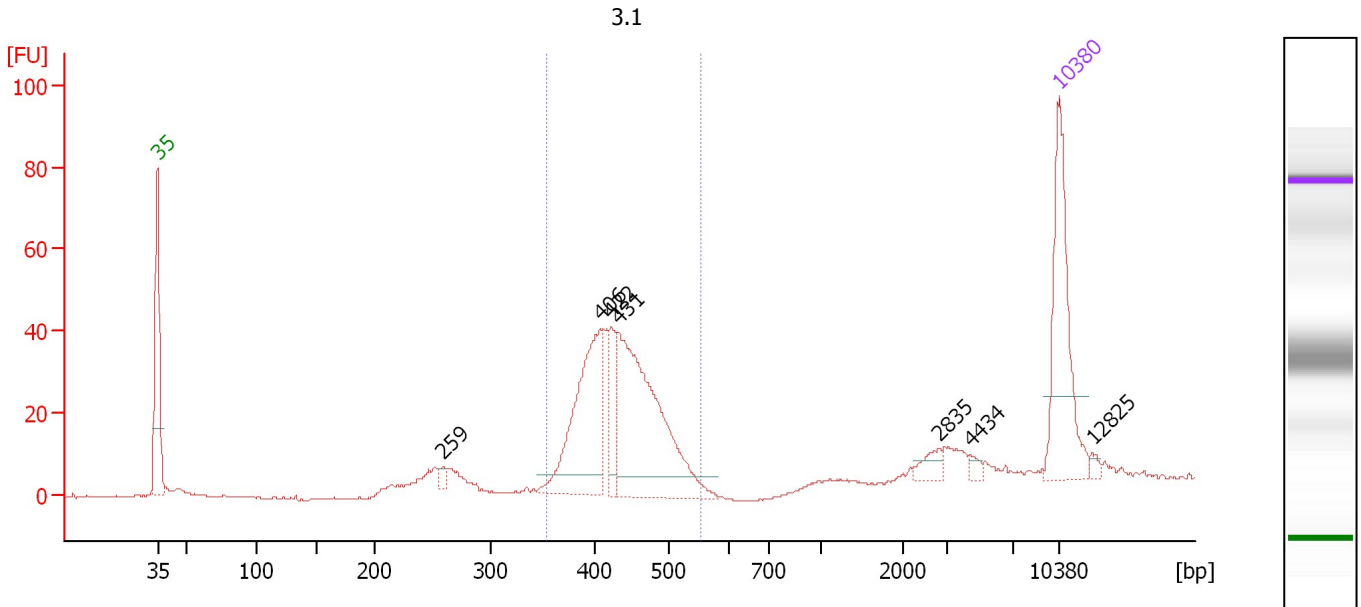
Region table for sample 3 : 2.2

From [bp]	To [bp]	Average Size [bp]	Molarity [pmol/l]	Conc. [pg/μl]	Corr. Area	% of Total	Size distribution in CV [%]	Color
224	340	282	4,662.1	865.73	807.2	84	7.2	Blue

Assay Class: High Sensitivity DNA Assay
 Data Path: C:\...ents and Settings\Bioanalyzer\2012-06-07\2012-06-07_001.xad

Created: 6/7/2012 11:56:27 AM
 Modified: 6/7/2012 12:55:16 PM

Electropherogram Summary Continued ...



Overall Results for sample 4 : 3.1

Number of peaks found: 7 Corr. Area 1: 351.9
 Noise: 0.2

Peak table for sample 4 : 3.1

Peak	Size [bp]	Conc. [pg/μl]	Molarity [pmol/l]	Observations
1	35	125.00	5,411.3	Lower Marker
2	259	5.81	34.0	
3	406	123.65	461.4	
4	422	30.82	110.7	
5	431	182.96	643.6	
6	2,835	9.02	4.8	
7	4,434	3.58	1.2	
8	10,380	75.00	10.9	Upper Marker
9	12,825	0.00	0.0	

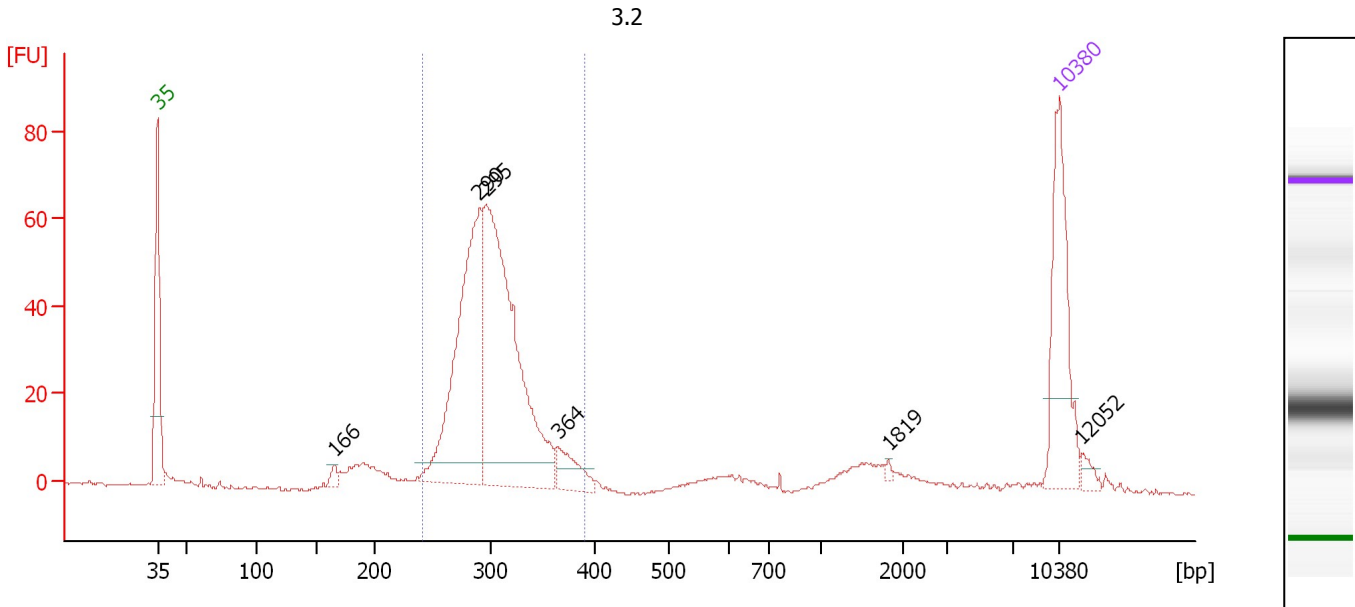
Region table for sample 4 : 3.1

From [bp]	To [bp]	Average Size [bp]	Molarity [pmol/l]	Conc. [pg/μl]	Corr. Area	% of Total	Size distribution in CV [%]	Color
352	553	433	1,177.8	333.62	351.9	68	9.6	Blue

Assay Class: High Sensitivity DNA Assay
 Data Path: C:\...ents and Settings\Bioanalyzer\2012-06-07\2012-06-07_001.xad

Created: 6/7/2012 11:56:27 AM
 Modified: 6/7/2012 12:55:16 PM

Electropherogram Summary Continued ...



Overall Results for sample 5 : 3.2

Number of peaks found: 6 Corr. Area 1: 520.5
 Noise: 0.3

Peak table for sample 5 : 3.2

Peak	Size [bp]	Conc. [pg/μl]	Molarity [pmol/l]	Observations
1	35	125.00	5,411.3	Lower Marker
2	166	7.42	67.9	
3	290	234.42	1,225.5	
4	295	318.05	1,633.2	
5	364	27.60	115.0	
6	1,819	1.92	1.6	
7	10,380	75.00	10.9	Upper Marker
8	12,052	0.00	0.0	

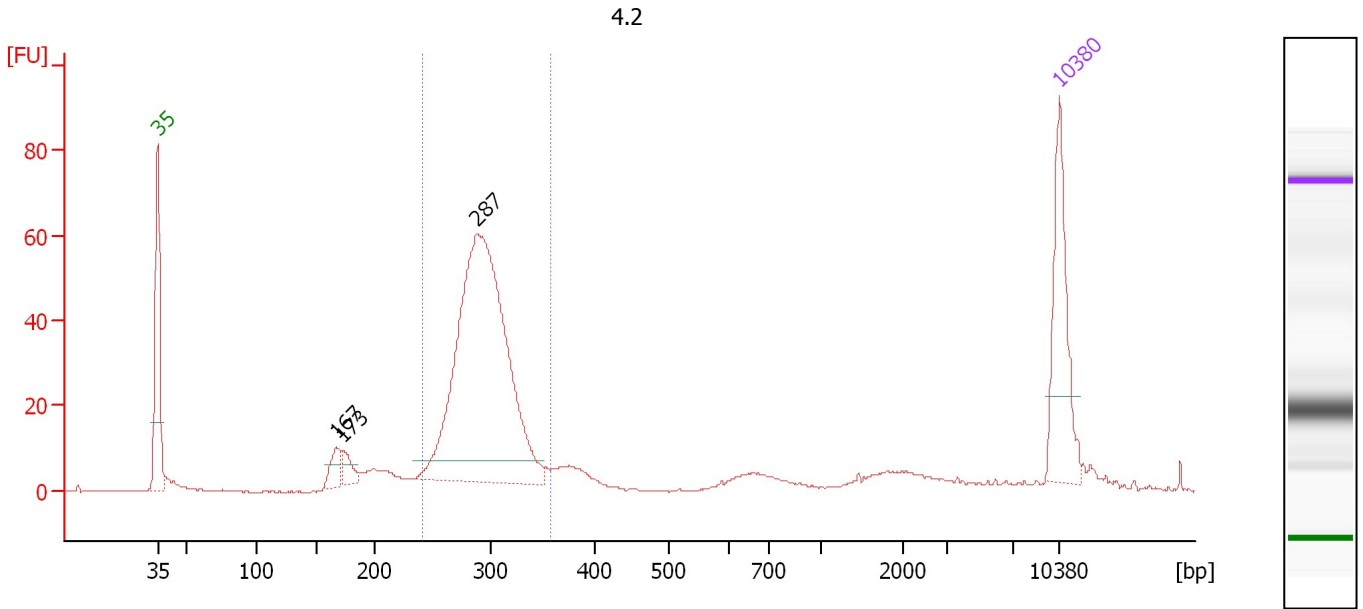
Region table for sample 5 : 3.2

From [bp]	To [bp]	Average Size [bp]	Molarity [pmol/l]	Conc. [pg/μl]	Corr. Area	% of Total	Size distribution in CV [%]	Color
240	389	302	2,891.0	571.07	520.5	80	9.3	Blue

Assay Class: High Sensitivity DNA Assay
 Data Path: C:\...ents and Settings\Bioanalyzer\2012-06-07\2012-06-07_001.xad

Created: 6/7/2012 11:56:27 AM
 Modified: 6/7/2012 12:55:16 PM

Electropherogram Summary Continued ...



Overall Results for sample 6 : 4.2

Number of peaks found: 3 Corr. Area 1: 438.8
 Noise: 0.2

Peak table for sample 6 : 4.2

Peak	Size [bp]	Conc. [pg/μl]	Molarity [pmol/l]	Observations
1	35	125.00	5,411.3	Lower Marker
2	167	21.76	197.6	
3	173	17.73	155.2	
4	287	510.71	2,692.5	
5	10,380	75.00	10.9	Upper Marker

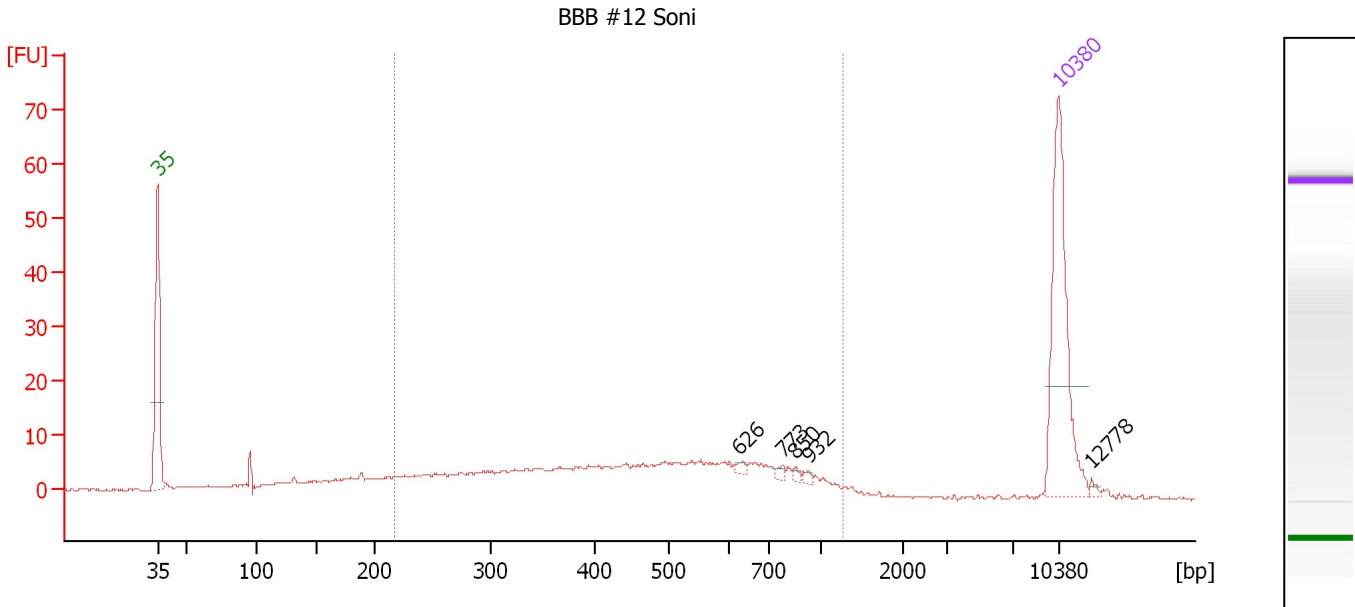
Region table for sample 6 : 4.2

From [bp]	To [bp]	Average Size [bp]	Molarity [pmol/l]	Conc. [pg/μl]	Corr. Area	% of Total	Size distribution in CV [%]	Color
240	357	293	2,856.5	549.97	438.8	65	7.6	Blue

Assay Class: High Sensitivity DNA Assay
 Data Path: C:\...ents and Settings\Bioanalyzer\2012-06-07\2012-06-07_001.xad

Created: 6/7/2012 11:56:27 AM
 Modified: 6/7/2012 12:55:16 PM

Electropherogram Summary Continued ...



Setpoint Deviations for sample 7 : BBB #12 Soni

Height Threshold [FU] : 2

Overall Results for sample 7 : BBB #12 Soni

Number of peaks found: 5 Corr. Area 1: 197.0
 Noise: 0.1

Peak table for sample 7 : BBB #12 Soni

Peak	Size [bp]	Conc. [pg/μl]	Molarity [pmol/l]	Observations
1	35	125.00	5,411.3	Lower Marker
2	626	2.30	5.6	
3	773	2.16	4.2	
4	850	1.73	3.1	
5	932	1.58	2.6	
6	10,380	75.00	10.9	Upper Marker
7	12,778	0.00	0.0	

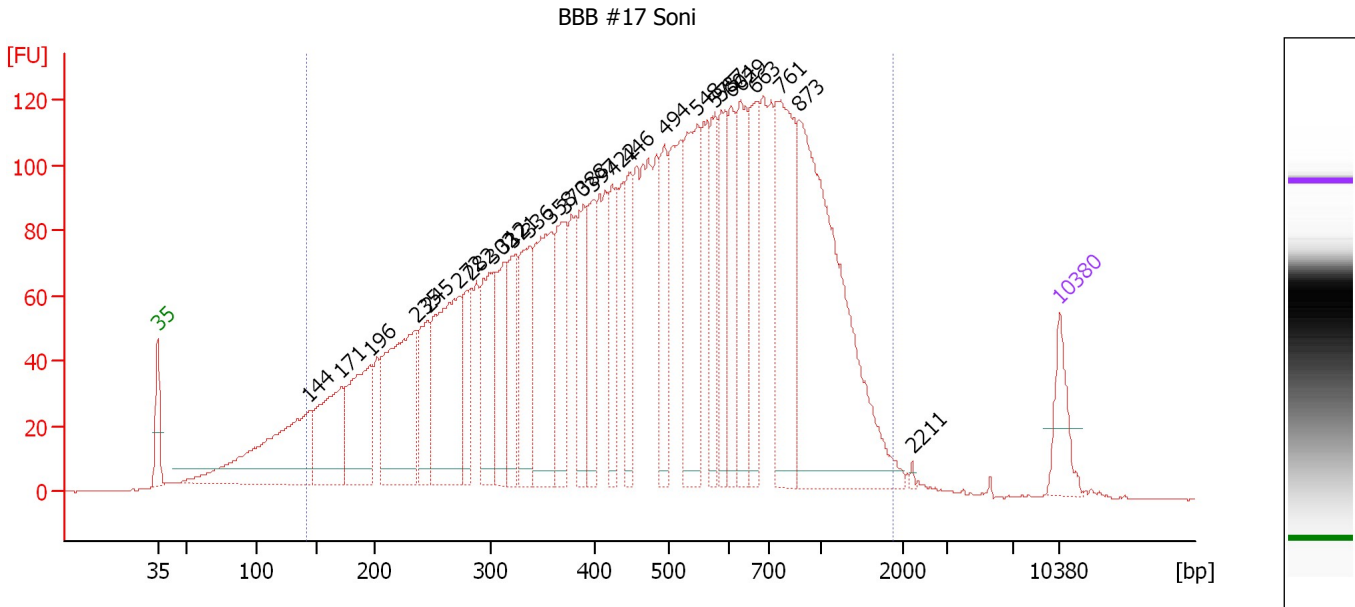
Region table for sample 7 : BBB #12 Soni

From [bp]	To [bp]	Average Size [bp]	Molarity [pmol/l]	Conc. [pg/μl]	Corr. Area	% of Total	Size distribution in CV [%]	Color
217	1,265	500	928.0	245.50	197.0	79	40.6	Blue

Assay Class: High Sensitivity DNA Assay
 Data Path: C:\...ents and Settings\Bioanalyzer\2012-06-07\2012-06-07_001.xad

Created: 6/7/2012 11:56:27 AM
 Modified: 6/7/2012 12:55:16 PM

Electropherogram Summary Continued ...



Overall Results for sample 8 : BBB #17 Soni

Number of peaks found: 27 Corr. Area 1: 4,532.4
 Noise: 0.1

Peak table for sample 8 : BBB #17 Soni

Peak	Size [bp]	Conc. [pg/μl]	Molarity [pmol/l]	Observations
1	35	125.00	5,411.3	Lower Marker
2	144	514.26	5,399.2	
3	171	297.19	2,625.7	
4	196	305.94	2,370.8	
5	235	457.82	2,951.8	
6	245	165.96	1,025.1	
7	272	444.37	2,471.9	
8	282	125.44	675.0	
9	302	227.01	1,139.6	
10	312	181.49	882.8	
11	321	165.17	780.6	
12	336	235.81	1,062.4	
13	358	339.03	1,436.8	
14	370	230.89	946.5	
15	388	191.55	747.2	
16	397	150.59	574.1	
17	422	143.19	513.7	
18	446	146.60	498.4	
19	494	164.03	503.1	
20	548	333.06	921.1	
21	575	171.85	452.9	
22	587	171.41	442.2	
23	604	146.78	368.0	
24	629	217.04	522.7	
25	663	196.57	449.0	
26	761	407.74	811.9	

Assay Class: High Sensitivity DNA Assay
Data Path: C:\...ents and Settings\Bioanalyzer\2012-06-07\2012-06-07_001.xad

Created: 6/7/2012 11:56:27 AM
Modified: 6/7/2012 12:55:16 PM

Electropherogram Summary Continued ...**... Peak table for sample 8 : BBB #17 Soni**

Peak	Size [bp]	Conc. [pg/ μ l]	Molarity [pmol/l]	Observations
27	873	816.23	1,416.8	
28	2,211	4.01	2.7	
29	10,380	75.00	10.9	Upper Marker

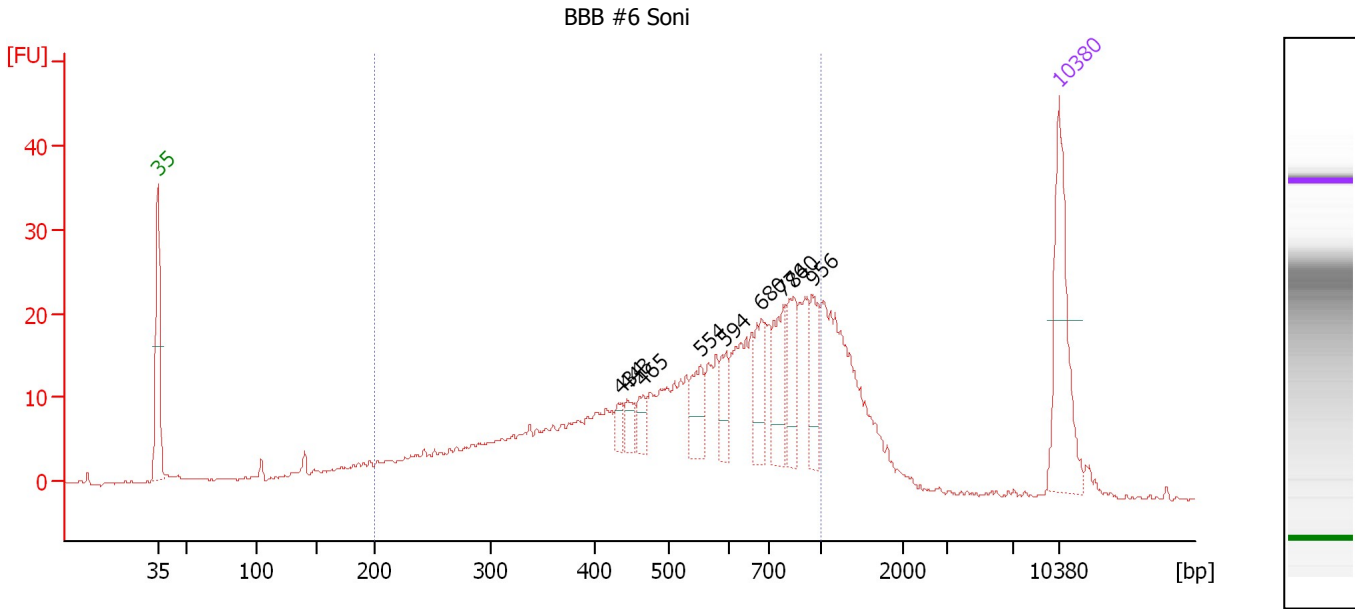
Region table for sample 8 : BBB #17 Soni

From [bp]	To [bp]	Average Size [bp]	Molarity [pmol/l]	Conc. [pg/ μ l]	Corr. Area	% of Total	Size distribution in CV [%]	Color
142	1,887	546	36,139.0	8,787.64	4,532.4	94	55.0	

Assay Class: High Sensitivity DNA Assay
 Data Path: C:\...ents and Settings\Bioanalyzer\2012-06-07\2012-06-07_001.xad

Created: 6/7/2012 11:56:27 AM
 Modified: 6/7/2012 12:55:16 PM

Electropherogram Summary Continued ...



Overall Results for sample 9 : BBB #6 Soni

Number of peaks found: 9 Corr. Area 1: 449.6
 Noise: 0.2

Peak table for sample 9 : BBB #6 Soni

Peak	Size [bp]	Conc. [pg/μl]	Molarity [pmol/l]	Observations
1	35	125.00	5,411.3	Lower Marker
2	434	10.77	37.6	
3	443	13.20	45.1	
4	465	14.33	46.7	
5	554	28.83	78.9	
6	594	23.06	58.8	
7	680	34.12	76.0	
8	776	44.76	87.3	
9	840	35.84	64.6	
10	956	28.00	44.4	
11	10,380	75.00	10.9	Upper Marker

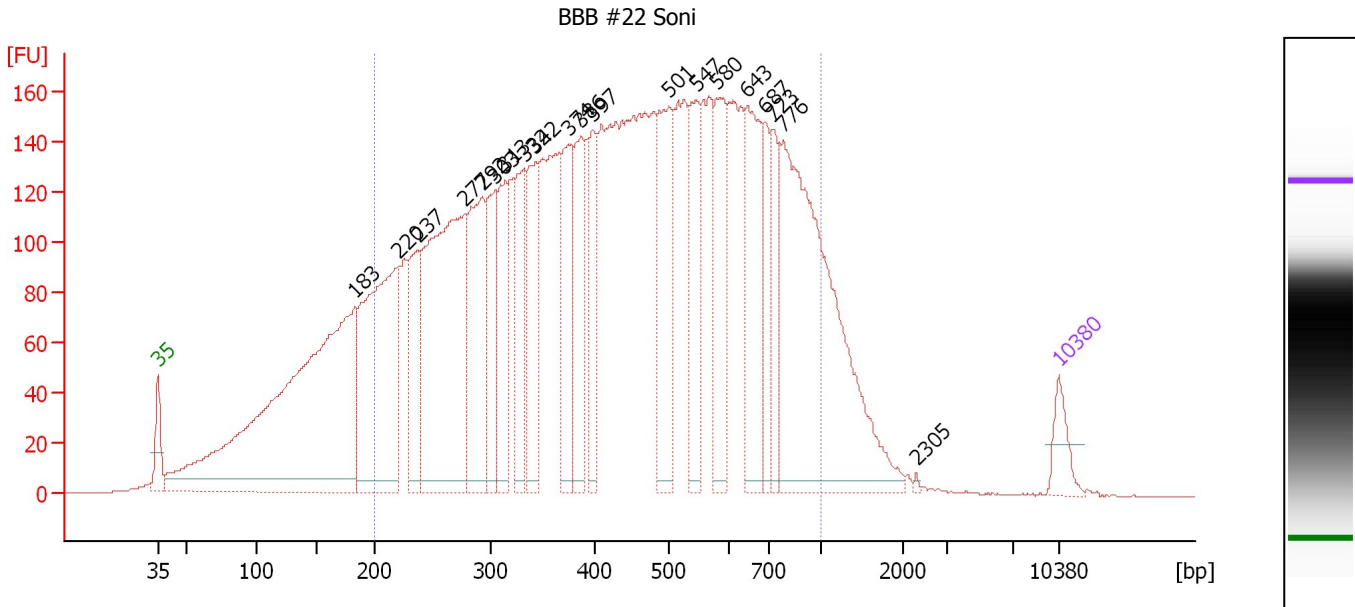
Region table for sample 9 : BBB #6 Soni

From [bp]	To [bp]	Average Size [bp]	Molarity [pmol/l]	Conc. [pg/μl]	Corr. Area	% of Total	Size distribution in CV [%]	Color
200	1,000	564	3,298.9	979.14	449.6	78	36.3	Blue

Assay Class: High Sensitivity DNA Assay
 Data Path: C:\...ents and Settings\Bioanalyzer\2012-06-07\2012-06-07_001.xad

Created: 6/7/2012 11:56:27 AM
 Modified: 6/7/2012 12:55:16 PM

Electropherogram Summary Continued ...



Overall Results for sample 10 : BBB #22 Soni

Number of peaks found: 20 Corr. Area 1: 5,986.7
 Noise: 0.2

Peak table for sample 10 : BBB #22 Soni

Peak	Size [bp]	Conc. [pg/μl]	Molarity [pmol/l]	Observations
1	35	125.00	5,411.3	Lower Marker
2	183	2,400.65	19,887.7	
3	220	1,107.51	7,619.1	
4	237	359.69	2,301.2	
5	277	1,338.78	7,332.6	
6	292	579.24	3,010.1	
7	303	281.15	1,406.2	
8	313	403.20	1,949.1	
9	332	360.82	1,646.8	
10	342	381.20	1,686.5	
11	374	393.43	1,593.9	
12	386	332.32	1,305.3	
13	397	272.42	1,038.5	
14	501	495.60	1,500.1	
15	547	344.17	953.0	
16	580	364.85	953.0	
17	643	473.47	1,115.6	
18	687	206.88	456.0	
19	723	199.39	417.9	
20	776	1,413.89	2,759.6	
21	2,305	5.45	3.6	
22	10,380	75.00	10.9	Upper Marker

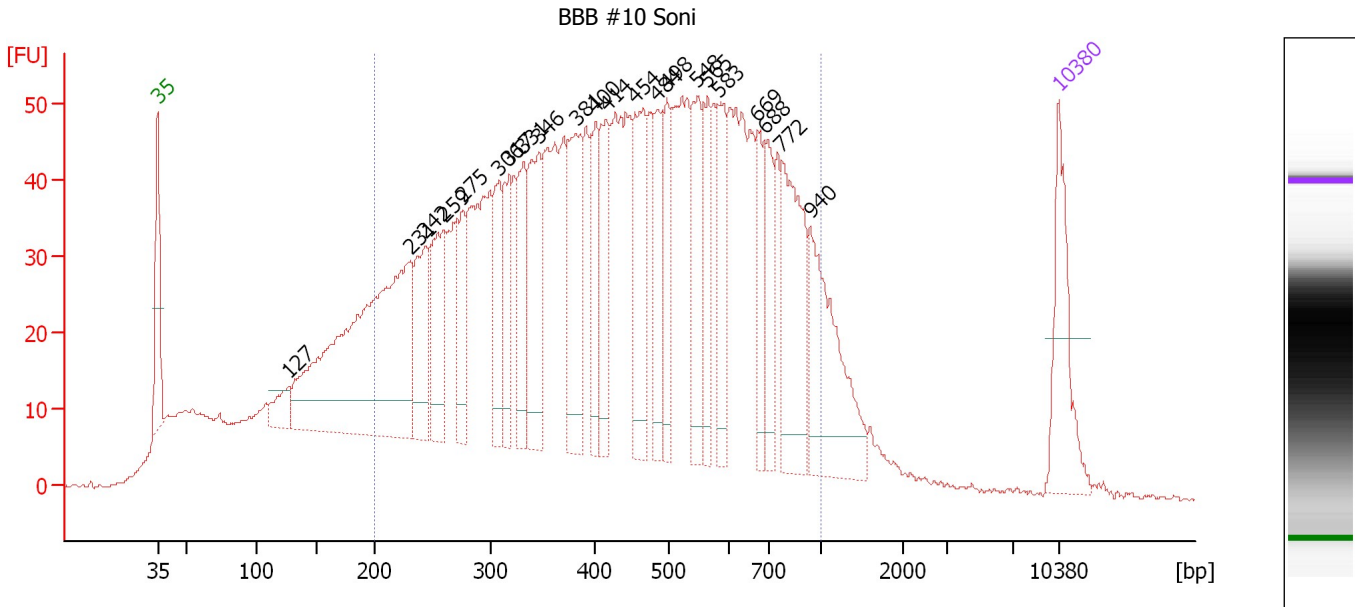
Region table for sample 10 : BBB #22 Soni

From [bp]	To [bp]	Average Size [bp]	Molarity [pmol/l]	Conc. [pg/μl]	Corr. Area	% of Total	Size distribution in CV [%]	Color
200	1,000	467	51,539.5	12,740.29	5,986.7	80	39.5	Blue

Assay Class: High Sensitivity DNA Assay
 Data Path: C:\...ents and Settings\Bioanalyzer\2012-06-07\2012-06-07_001.xad

Created: 6/7/2012 11:56:27 AM
 Modified: 6/7/2012 12:55:16 PM

Electropherogram Summary Continued ...



Overall Results for sample 11 : BBB #10 Soni

Number of peaks found: 22 Corr. Area 1: 1,920.3
 Noise: 0.2

Peak table for sample 11 : BBB #10 Soni

Peak	Size [bp]	Conc. [pg/μl]	Molarity [pmol/l]	Observations
1	35	125.00	5,411.3	Lower Marker
2	127	33.22	395.5	
3	231	497.67	3,266.8	
4	242	94.58	591.1	
5	259	109.02	637.5	
6	275	63.33	348.7	
7	306	77.43	383.0	
8	317	72.15	345.0	
9	331	78.33	359.1	
10	346	120.43	527.4	
11	381	121.26	481.8	
12	400	67.77	256.8	
13	414	84.11	307.8	
14	454	116.42	388.7	
15	484	68.00	212.9	
16	498	68.45	208.2	
17	548	84.86	234.8	
18	565	63.19	169.6	
19	583	70.71	183.8	
20	669	55.71	126.1	
21	688	62.31	137.1	
22	772	141.85	278.5	
23	940	145.03	233.9	
24	10,380	75.00	10.9	Upper Marker

Assay Class: High Sensitivity DNA Assay
Data Path: C:\...ents and Settings\Bioanalyzer\2012-06-07\2012-06-07_001.xad

Created: 6/7/2012 11:56:27 AM
Modified: 6/7/2012 12:55:16 PM

Electropherogram Summary Continued ...

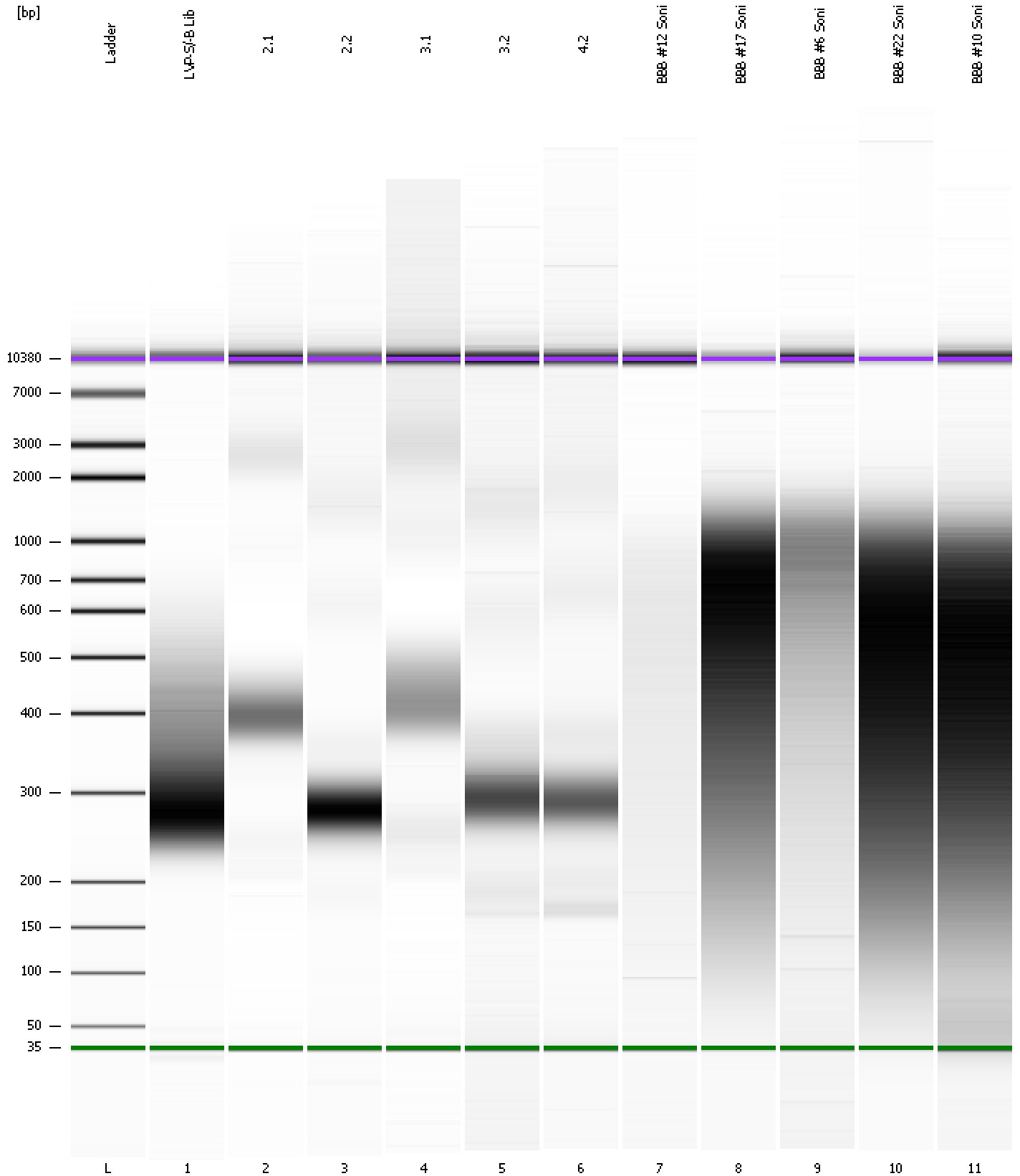
... Region table for sample 11 : **BBB #10 Soni**

From [bp]	To [bp]	Average Size [bp]	Molarity [pmol/l]	Conc. [pg/μl]	Corr. Area	% of Total	Size distribution in CV [%]	Color
200	1,000	464	14,966.8	3,698.66	1,920.3	78	39.0	■

Assay Class: High Sensitivity DNA Assay
Data Path: C:\...ents and Settings\Bioanalyzer\2012-06-07\2012-06-07_001.xad

Created: 6/7/2012 11:56:27 AM
Modified: 6/7/2012 12:55:16 PM

Gel Image



Assay Class: High Sensitivity DNA Assay
 Data Path: C:\...ents and Settings\Bioanalyzer\2012-06-07\2012-06-07_001.xad

Created: 6/7/2012 11:56:27 AM
 Modified: 6/7/2012 12:55:16 PM

Run Logbook

Description	Number	Source	Category	Sub Category	Time	Time Zone	User	Host
Run ended on port 1 (Number of wells acquired: 12)		Instrument	Run		6/7/2012 12:37:41 PM	(GMT --07:00) Pacific Standard Time	UC Davis	D8XSMGH1
Run started on port 1 (File: C:\Documents and Settings\Bioanalyzer\2012-06-07\2012-06-07_001.xad)		Instrument	Run		6/7/2012 11:56:28 AM	(GMT --07:00) Pacific Standard Time	UC Davis	D8XSMGH1
Product Number : G2938B		Instrument	Run		6/7/2012 11:56:28 AM	(GMT --07:00) Pacific Standard Time	UC Davis	D8XSMGH1
Name :		Instrument	Run		6/7/2012 11:56:28 AM	(GMT --07:00) Pacific Standard Time	UC Davis	D8XSMGH1
Vendor : Agilent Technologies		Instrument	Run		6/7/2012 11:56:28 AM	(GMT --07:00) Pacific Standard Time	UC Davis	D8XSMGH1
Serial# : DE13701086		Instrument	Run		6/7/2012 11:56:28 AM	(GMT --07:00) Pacific Standard Time	UC Davis	D8XSMGH1
Firmware : C.01.069		Instrument	Run		6/7/2012 11:56:28 AM	(GMT --07:00) Pacific Standard Time	UC Davis	D8XSMGH1
Cartridge : Electrode		Instrument	Run		6/7/2012 11:56:28 AM	(GMT --07:00) Pacific Standard Time	UC Davis	D8XSMGH1