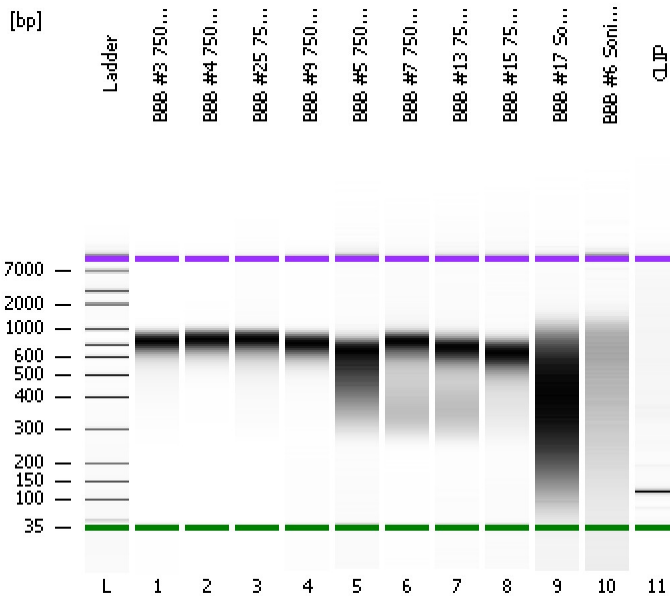


Assay Class: High Sensitivity DNA Assay  
Data Path: C:\...ents and Settings\Bioanalyzer\2012-06-07\2012-06-07\_003.xad

Created: 6/7/2012 4:28:51 PM  
Modified: 6/7/2012 5:23:28 PM

**Electrophoresis File Run Summary**



Instrument Information:

Instrument Name: DE13701086      Firmware: C.01.069  
Serial#: DE13701086      Type: G2938B

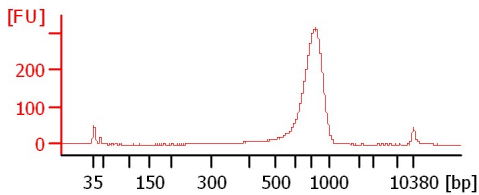
Assay Information:

Assay Origin Path: C:\Program Files\Agilent\2100 bioanalyzer\2100 expert\assays\dsDNA\High Sensitivity DNA.xsy  
Assay Class: High Sensitivity DNA Assay  
Version: 1.03  
Assay Comments: Copyright © 2003-2010 Agilent Technologies

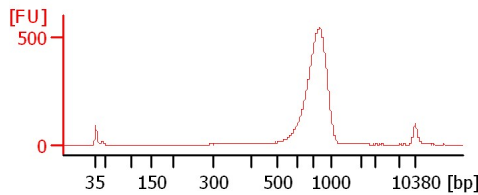
Chip Information:

Chip Lot #:   
Reagent Kit Lot #:   
Chip Comments:

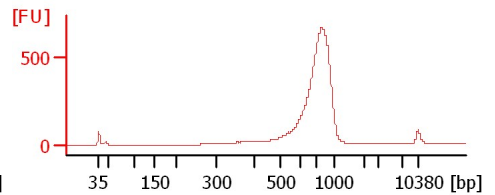
**BBB #3 750bp Lib**



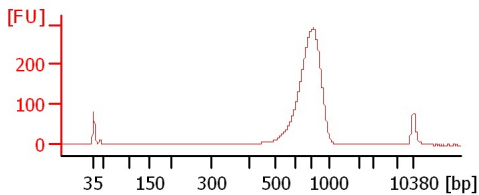
**BBB #4 750bp Lib**



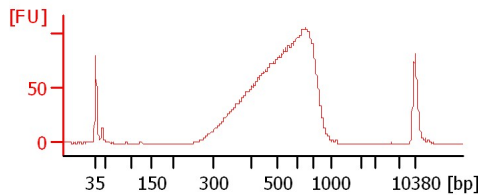
**BBB #25 750bp Lib**



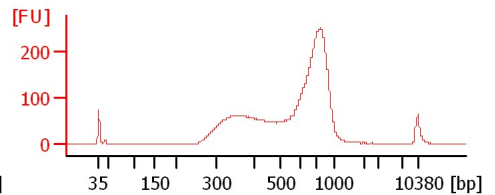
**BBB #9 750bp Lib**



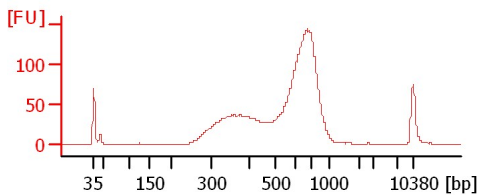
**BBB #5 750bp Lib**



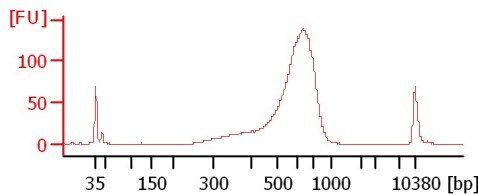
**BBB #7 750bp Lib**



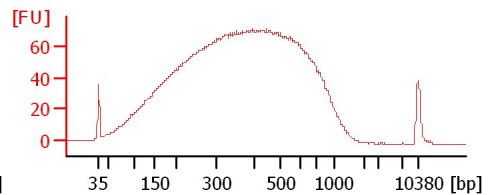
**BBB #13 750bp Lib**



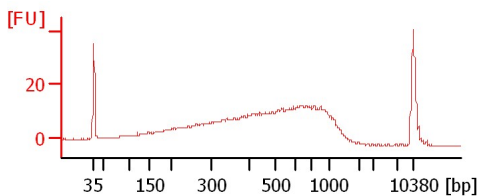
**BBB #15 750bp Lib**



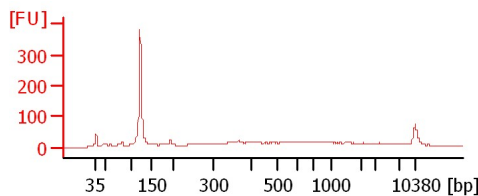
**BBB #17 Soni (5+2Cycl)**



**BBB #6 Soni (5+2Cycl)**



**CLIP**



Assay Class: High Sensitivity DNA Assay  
 Data Path: C:\...ents and Settings\Bioanalyzer\2012-06-07\2012-06-07\_003.xad

Created: 6/7/2012 4:28:51 PM  
 Modified: 6/7/2012 5:23:28 PM

**Electrophoresis File Run Summary (Chip Summary)**

Sample Name	Sample Comment	Rest. Digest	Status	Observation	Result Label	Result Color
BBB #3 750bp Lib		<input type="checkbox"/>	✓			
BBB #4 750bp Lib		<input type="checkbox"/>	✓			
BBB #25 750bp Lib		<input type="checkbox"/>	✓			
BBB #9 750bp Lib		<input type="checkbox"/>	✓			
BBB #5 750bp Lib		<input type="checkbox"/>	✓			
BBB #7 750bp Lib		<input type="checkbox"/>	✓			
BBB #13 750bp Lib		<input type="checkbox"/>	✓			
BBB #15 750bp Lib		<input type="checkbox"/>	✓			
BBB #17 Soni (5+2Cycl)		<input type="checkbox"/>	✓			
BBB #6 Soni (5+2Cycl)		<input type="checkbox"/>	✓			
CLIP		<input type="checkbox"/>	✓			
Ladder		<input type="checkbox"/>	✓			

**Chip Lot #**

**Reagent Kit Lot #**

**Chip Comments :**

Assay Class: High Sensitivity DNA Assay  
Data Path: C:\...ents and Settings\Bioanalyzer\2012-06-07\2012-06-07\_003.xad

Created: 6/7/2012 4:28:51 PM  
Modified: 6/7/2012 5:23:28 PM

**Electrophoresis Assay Details**

**General Analysis Settings**

Number of Available Sample and Ladder Wells (Max.) : 12  
Minimum Visible Range [s] : 32  
Maximum Visible Range [s] : 138  
Start Analysis Time Range [s] : 33  
End Analysis Time Range [s] : 137.5  
Ladder Concentration [pg/μl] : 1950  
Uses Standard Area for Ladder Fragments  
Lower Marker Concentration [pg/μl] : 125  
Upper Marker Concentration [pg/μl] : 75  
Used Upper Marker for Quantitation  
Standard Curve Fit is Point to Point  
Show Data Aligned to Lower and Upper Marker

**Integrator Settings**

Integration Start Time [s] : 33.05  
Integration End Time [s] : 137  
Slope Threshold : 0.8  
Height Threshold [FU] : 5  
Area Threshold : 0.1  
Width Threshold [s] : 0.6  
Baseline Plateau [s] : 0.5

**Filter Settings**

Filter Width [s] : 0.5  
Polynomial Order : 4

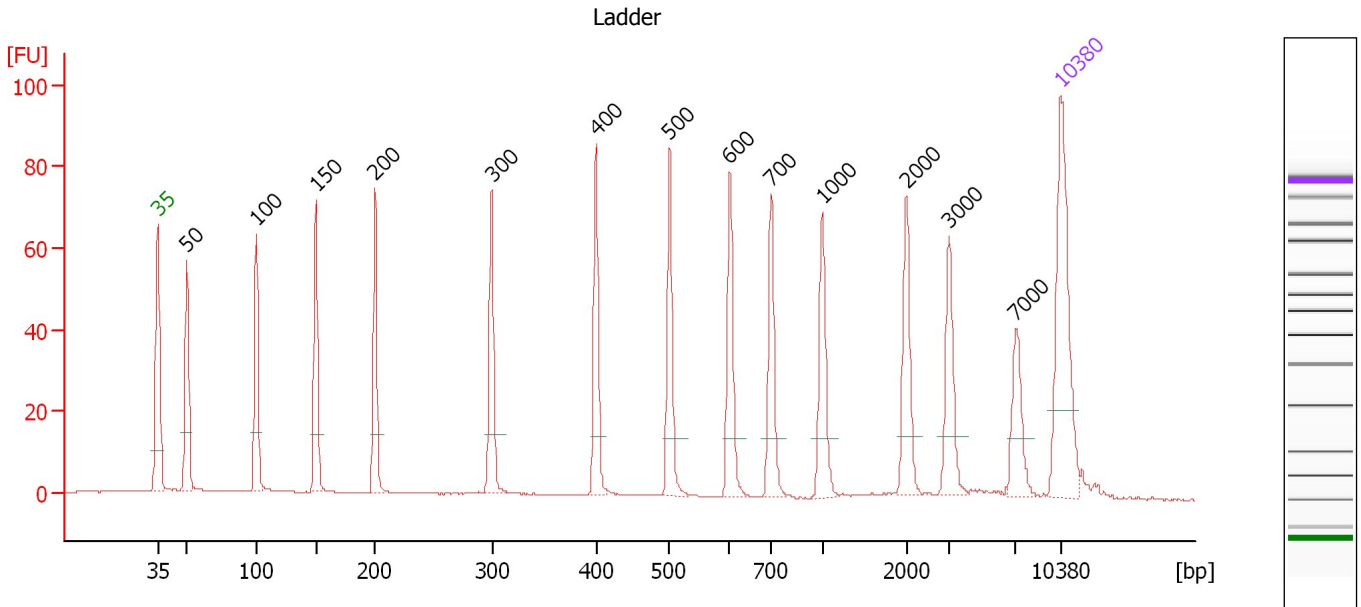
**Ladder**

Ladder Peak	Size	Area
1	35	160
2	50	210
3	100	208
4	150	221
5	200	242
6	300	270
7	400	305
8	500	306
9	600	336
10	700	321
11	1000	366
12	2000	413
13	3000	411
14	7000	400
15	10380	214

Assay Class: High Sensitivity DNA Assay  
 Data Path: C:\...ents and Settings\Bioanalyzer\2012-06-07\2012-06-07\_003.xad

Created: 6/7/2012 4:28:51 PM  
 Modified: 6/7/2012 5:23:28 PM

**Electropherogram Summary**



**Overall Results for Ladder**

Noise: 0.1

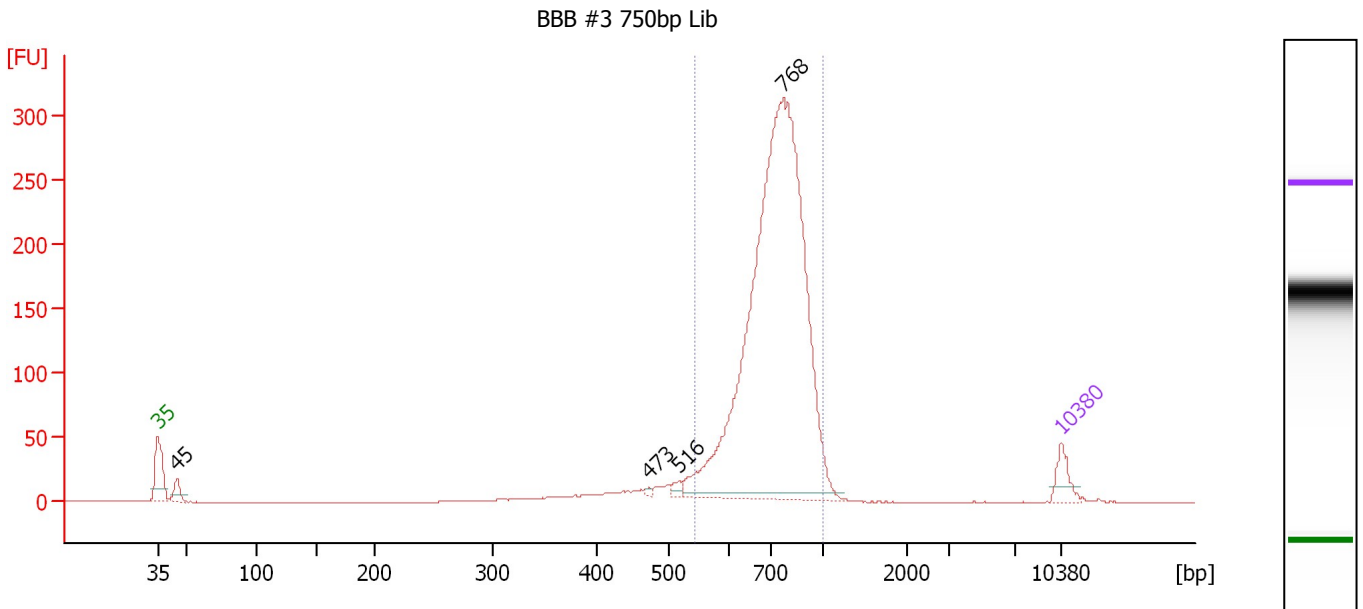
**Peak table for Ladder**

Peak	Size [bp]	Conc. [pg/μl]	Molarity [pmol/l]	Observations
1	35	125.00	5,411.3	Lower Marker
2	50	150.00	4,545.5	Ladder Peak
3	100	150.00	2,272.7	Ladder Peak
4	150	150.00	1,515.2	Ladder Peak
5	200	150.00	1,136.4	Ladder Peak
6	300	150.00	757.6	Ladder Peak
7	400	150.00	568.2	Ladder Peak
8	500	150.00	454.5	Ladder Peak
9	600	150.00	378.8	Ladder Peak
10	700	150.00	324.7	Ladder Peak
11	1,000	150.00	227.3	Ladder Peak
12	2,000	150.00	113.6	Ladder Peak
13	3,000	150.00	75.8	Ladder Peak
14	7,000	150.00	32.5	Ladder Peak
15	10,380	75.00	10.9	Upper Marker

Assay Class: High Sensitivity DNA Assay  
 Data Path: C:\...ents and Settings\Bioanalyzer\2012-06-07\2012-06-07\_003.xad

Created: 6/7/2012 4:28:51 PM  
 Modified: 6/7/2012 5:23:28 PM

**Electropherogram Summary Continued ...**



**Overall Results for sample 1 : BBB #3 750bp Lib**

Number of peaks found: 4                      Corr. Area 1: 1,724.9  
 Noise: 0.1

**Peak table for sample 1 : BBB #3 750bp Lib**

Peak	Size [bp]	Conc. [pg/μl]	Molarity [pmol/l]	Observations
1	35	125.00	5,411.3	Lower Marker
2	45	86.68	2,925.3	
3	473	9.55	30.6	
4	516	27.50	80.8	
5	768	3,709.37	7,315.8	
6	10,380	75.00	10.9	Upper Marker

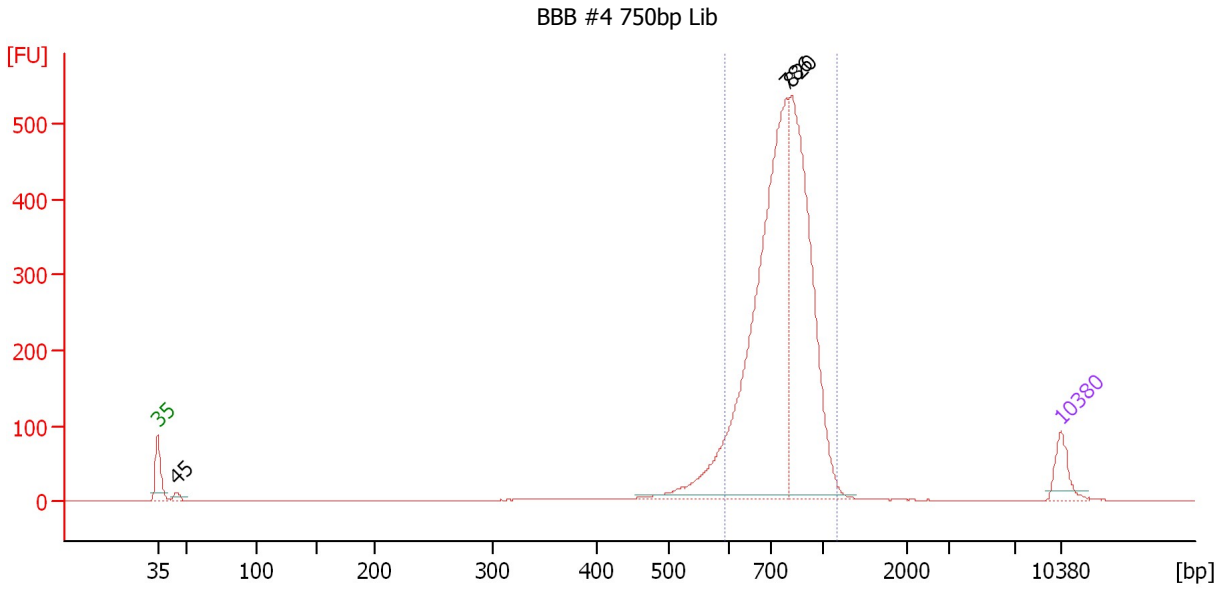
**Region table for sample 1 : BBB #3 750bp Lib**

From [bp]	To [bp]	Average Size [bp]	Molarity [pmol/l]	Conc. [pg/μl]	Corr. Area	% of Total	Size distribution in CV [%]	Color
542	1,000	746	7,648.8	3,696.88	1,724.9	89	14.0	Blue

Assay Class: High Sensitivity DNA Assay  
 Data Path: C:\...ents and Settings\Bioanalyzer\2012-06-07\2012-06-07\_003.xad

Created: 6/7/2012 4:28:51 PM  
 Modified: 6/7/2012 5:23:28 PM

**Electropherogram Summary Continued ...**



**Overall Results for sample 2 : BBB #4 750bp Lib**

Number of peaks found: 3                      Corr. Area 1: 2,905.8  
 Noise: 0.1

**Peak table for sample 2 : BBB #4 750bp Lib**

Peak	Size [bp]	Conc. [pg/μl]	Molarity [pmol/l]	Observations
1	35	125.00	5,411.3	Lower Marker
2	45	26.54	896.5	
3	786	1,816.32	3,502.9	
4	820	1,143.56	2,113.6	
5	10,380	75.00	10.9	Upper Marker

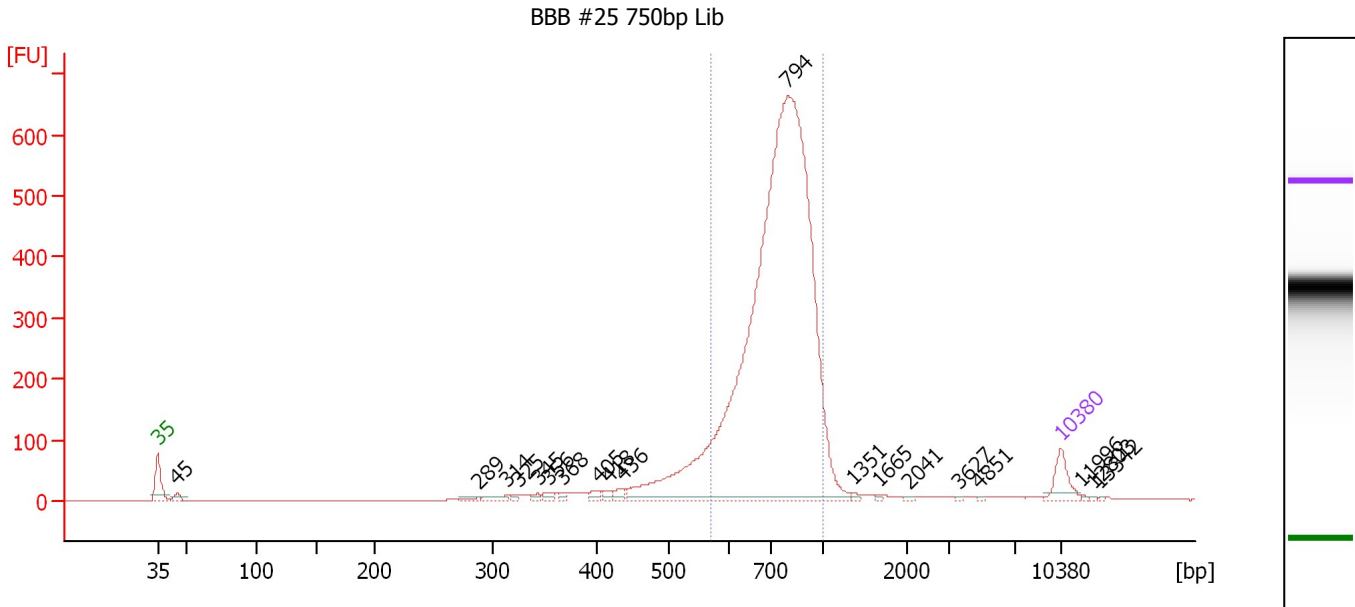
**Region table for sample 2 : BBB #4 750bp Lib**

From [bp]	To [bp]	Average Size [bp]	Molarity [pmol/l]	Conc. [pg/μl]	Corr. Area	% of Total	Size distribution in CV [%]	Color
591	1,164	783	5,571.2	2,822.04	2,905.8	91	14.5	Blue

Assay Class: High Sensitivity DNA Assay  
 Data Path: C:\...ents and Settings\Bioanalyzer\2012-06-07\2012-06-07\_003.xad

Created: 6/7/2012 4:28:51 PM  
 Modified: 6/7/2012 5:23:28 PM

**Electropherogram Summary Continued ...**



**Overall Results for sample 3 : BBB #25 750bp Lib**

Number of peaks found: 19                      Corr. Area 1: 3,750.4  
 Noise: 0.2

**Peak table for sample 3 : BBB #25 750bp Lib**

Peak	Size [bp]	Conc. [pg/μl]	Molarity [pmol/l]	Observations
1	35	125.00	5,411.3	Lower Marker
2	45	31.49	1,064.7	
3	289	13.97	73.3	
4	314	29.98	144.8	
5	325	10.21	47.6	
6	345	17.16	75.4	
7	356	19.39	82.6	
8	368	13.82	56.9	
9	405	19.66	73.6	
10	418	20.18	73.2	
11	436	27.35	95.0	
12	794	4,368.89	8,335.0	
13	1,351	8.44	9.5	
14	1,665	5.14	4.7	
15	2,041	4.56	3.4	
16	3,627	3.28	1.4	
17	4,851	2.79	0.9	
18	10,380	75.00	10.9	Upper Marker
19	11,996	0.00	0.0	
20	12,803	0.00	0.0	
21	13,342	0.00	0.0	

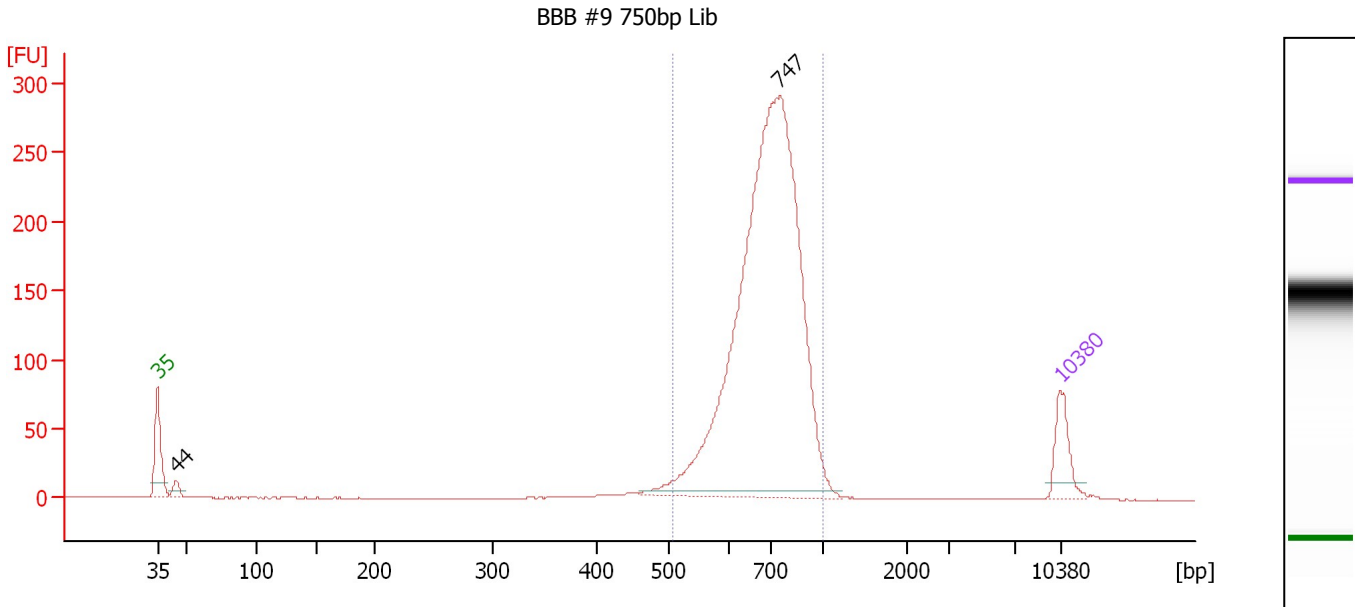
**Region table for sample 3 : BBB #25 750bp Lib**

From [bp]	To [bp]	Average Size [bp]	Molarity [pmol/l]	Conc. [pg/μl]	Corr. Area	% of Total	Size distribution in CV [%]	Color
567	1,000	765	7,926.2	3,923.35	3,750.4	82	14.5	Blue

Assay Class: High Sensitivity DNA Assay  
 Data Path: C:\...ents and Settings\Bioanalyzer\2012-06-07\2012-06-07\_003.xad

Created: 6/7/2012 4:28:51 PM  
 Modified: 6/7/2012 5:23:28 PM

**Electropherogram Summary Continued ...**



**Overall Results for sample 4 : BBB #9 750bp Lib**

Number of peaks found: 2                      Corr. Area 1: 1,800.1  
 Noise: 0.1

**Peak table for sample 4 : BBB #9 750bp Lib**

Peak	Size [bp]	Conc. [pg/μl]	Molarity [pmol/l]	Observations
1	35	125.00	5,411.3	Lower Marker
2	44	31.32	1,069.5	
3	747	1,943.18	3,938.8	
4	10,380	75.00	10.9	Upper Marker

**Region table for sample 4 : BBB #9 750bp Lib**

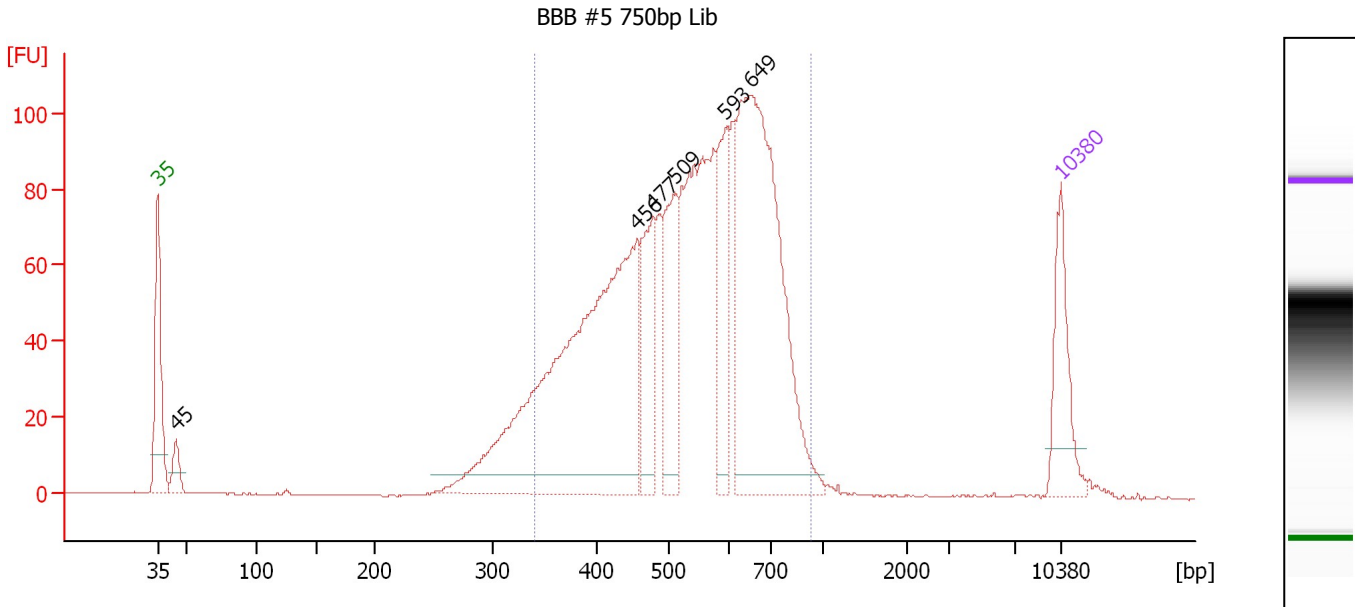
From [bp]	To [bp]	Average Size [bp]	Molarity [pmol/l]	Conc. [pg/μl]	Corr. Area	% of Total	Size distribution in CV [%]	Color
506	1,000	716	4,205.8	1,947.25	1,800.1	94	14.5	Blue



Assay Class: High Sensitivity DNA Assay  
 Data Path: C:\...ents and Settings\Bioanalyzer\2012-06-07\2012-06-07\_003.xad

Created: 6/7/2012 4:28:51 PM  
 Modified: 6/7/2012 5:23:28 PM

**Electropherogram Summary Continued ...**



**Overall Results for sample 5 : BBB #5 750bp Lib**

Number of peaks found: 6                      Corr. Area 1: 1,739.7  
 Noise: 0.1

**Peak table for sample 5 : BBB #5 750bp Lib**

Peak	Size [bp]	Conc. [pg/μl]	Molarity [pmol/l]	Observations
1	35	125.00	5,411.3	Lower Marker
2	45	35.44	1,206.4	
3	456	713.43	2,370.0	
4	477	114.71	364.3	
5	509	132.75	395.3	
6	593	115.02	293.8	
7	649	523.50	1,221.5	
8	10,380	75.00	10.9	Upper Marker

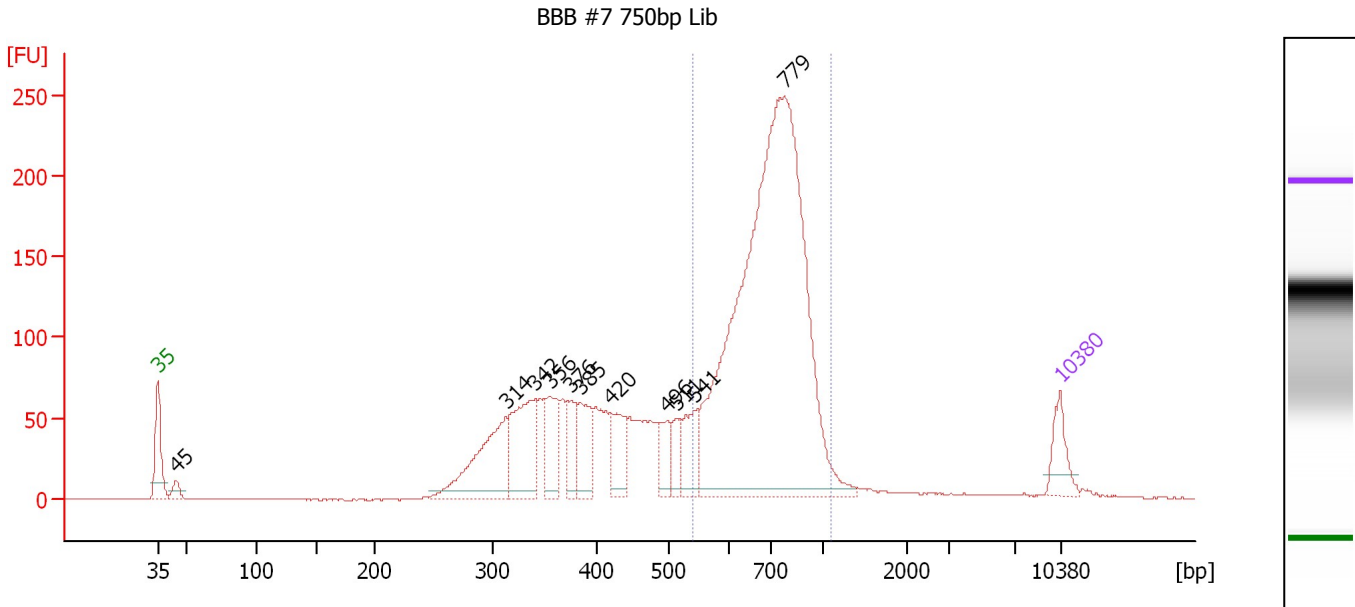
**Region table for sample 5 : BBB #5 750bp Lib**

From [bp]	To [bp]	Average Size [bp]	Molarity [pmol/l]	Conc. [pg/μl]	Corr. Area	% of Total	Size distribution in CV [%]	Color
341	926	545	5,953.2	2,001.68	1,739.7	90	22.1	Blue

Assay Class: High Sensitivity DNA Assay  
 Data Path: C:\...ents and Settings\Bioanalyzer\2012-06-07\2012-06-07\_003.xad

Created: 6/7/2012 4:28:51 PM  
 Modified: 6/7/2012 5:23:28 PM

**Electropherogram Summary Continued ...**



**Overall Results for sample 6 : BBB #7 750bp Lib**

Number of peaks found: 11                      Corr. Area 1: 1,660.9  
 Noise: 0.2

**Peak table for sample 6 : BBB #7 750bp Lib**

Peak	Size [bp]	Conc. [pg/µl]	Molarity [pmol/l]	Observations
1	35	125.00	5,411.3	Lower Marker
2	45	39.17	1,330.0	
3	314	357.05	1,725.3	
4	342	305.66	1,354.9	
5	356	174.37	741.6	
6	376	96.27	387.9	
7	385	157.11	618.2	
8	420	139.15	501.4	
9	496	83.77	255.9	
10	511	71.16	211.1	
11	541	118.10	330.9	
12	779	2,320.77	4,516.4	
13	10,380	75.00	10.9	Upper Marker

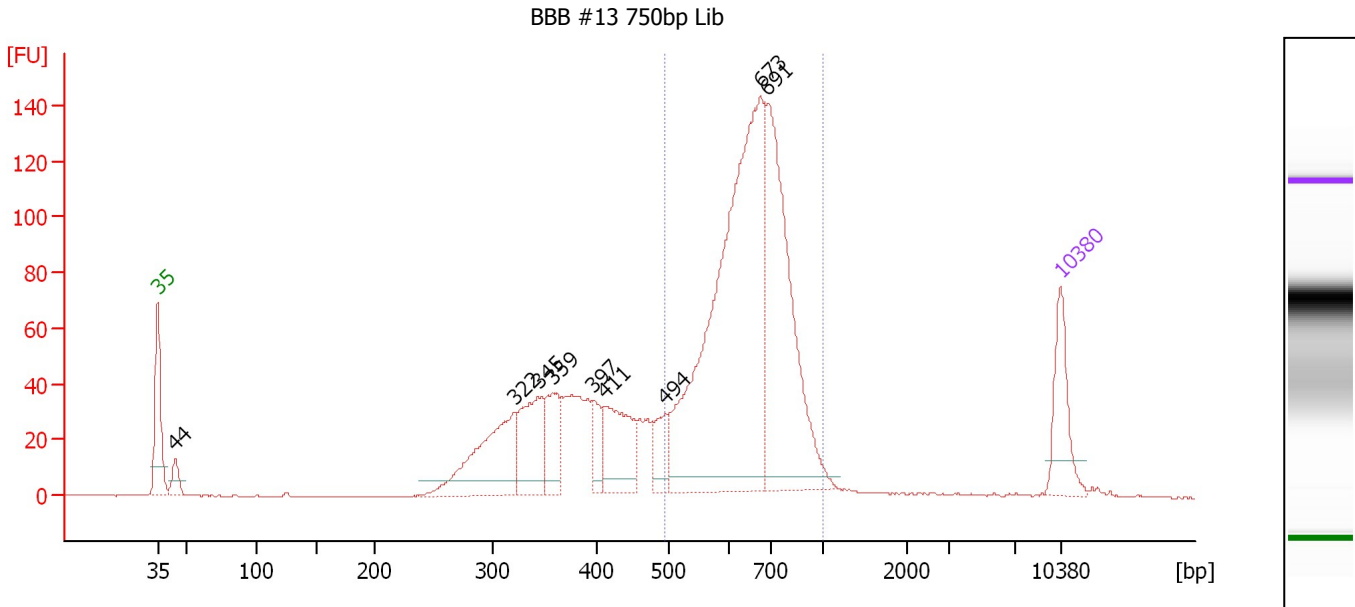
**Region table for sample 6 : BBB #7 750bp Lib**

From [bp]	To [bp]	Average Size [bp]	Molarity [pmol/l]	Conc. [pg/µl]	Corr. Area	% of Total	Size distribution in CV [%]	Color
538	1,095	727	5,148.2	2,406.29	1,660.9	55	16.0	Blue

Assay Class: High Sensitivity DNA Assay  
 Data Path: C:\...ents and Settings\Bioanalyzer\2012-06-07\2012-06-07\_003.xad

Created: 6/7/2012 4:28:51 PM  
 Modified: 6/7/2012 5:23:28 PM

**Electropherogram Summary Continued ...**



**Overall Results for sample 7 : BBB #13 750bp Lib**

Number of peaks found: 9                      Corr. Area 1: 1,086.2  
 Noise: 0.2

**Peak table for sample 7 : BBB #13 750bp Lib**

Peak	Size [bp]	Conc. [pg/μl]	Molarity [pmol/l]	Observations
1	35	125.00	5,411.3	Lower Marker
2	44	35.94	1,235.5	
3	322	212.52	999.4	
4	345	139.81	613.6	
5	359	90.27	381.4	
6	397	44.60	170.3	
7	411	129.68	478.0	
8	494	53.25	163.2	
9	673	829.11	1,866.2	
10	691	430.44	943.3	
11	10,380	75.00	10.9	Upper Marker

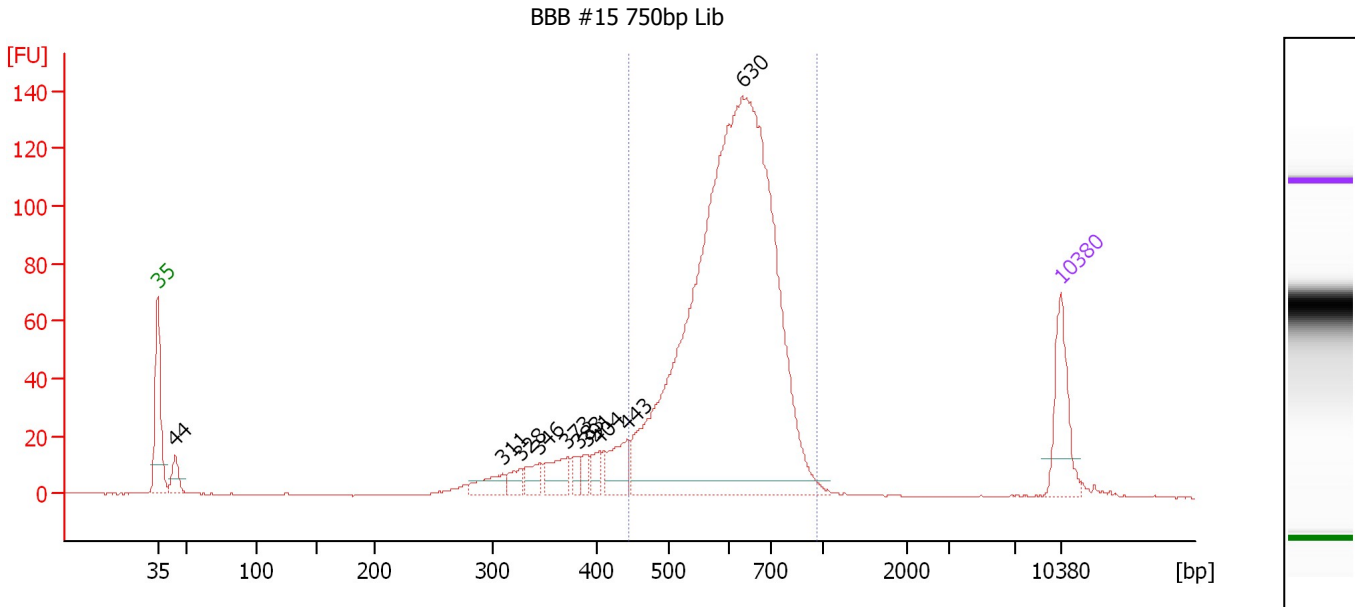
**Region table for sample 7 : BBB #13 750bp Lib**

From [bp]	To [bp]	Average Size [bp]	Molarity [pmol/l]	Conc. [pg/μl]	Corr. Area	% of Total	Size distribution in CV [%]	Color
494	1,000	664	3,102.6	1,328.09	1,086.2	59	15.1	Blue

Assay Class: High Sensitivity DNA Assay  
 Data Path: C:\...ents and Settings\Bioanalyzer\2012-06-07\2012-06-07\_003.xad

Created: 6/7/2012 4:28:51 PM  
 Modified: 6/7/2012 5:23:28 PM

**Electropherogram Summary Continued ...**



**Overall Results for sample 8 : BBB #15 750bp Lib**

Number of peaks found: 10                      Corr. Area 1: 1,207.3  
 Noise: 0.2

**Peak table for sample 8 : BBB #15 750bp Lib**

Peak	Size [bp]	Conc. [pg/μl]	Molarity [pmol/l]	Observations
1	35	125.00	5,411.3	Lower Marker
2	44	40.88	1,403.2	
3	311	38.26	186.7	
4	328	22.92	106.0	
5	346	30.48	133.5	
6	373	47.89	194.5	
7	383	16.80	66.5	
8	391	17.42	67.6	
9	404	23.29	87.3	
10	443	61.77	211.3	
11	630	1,576.55	3,792.7	
12	10,380	75.00	10.9	Upper Marker

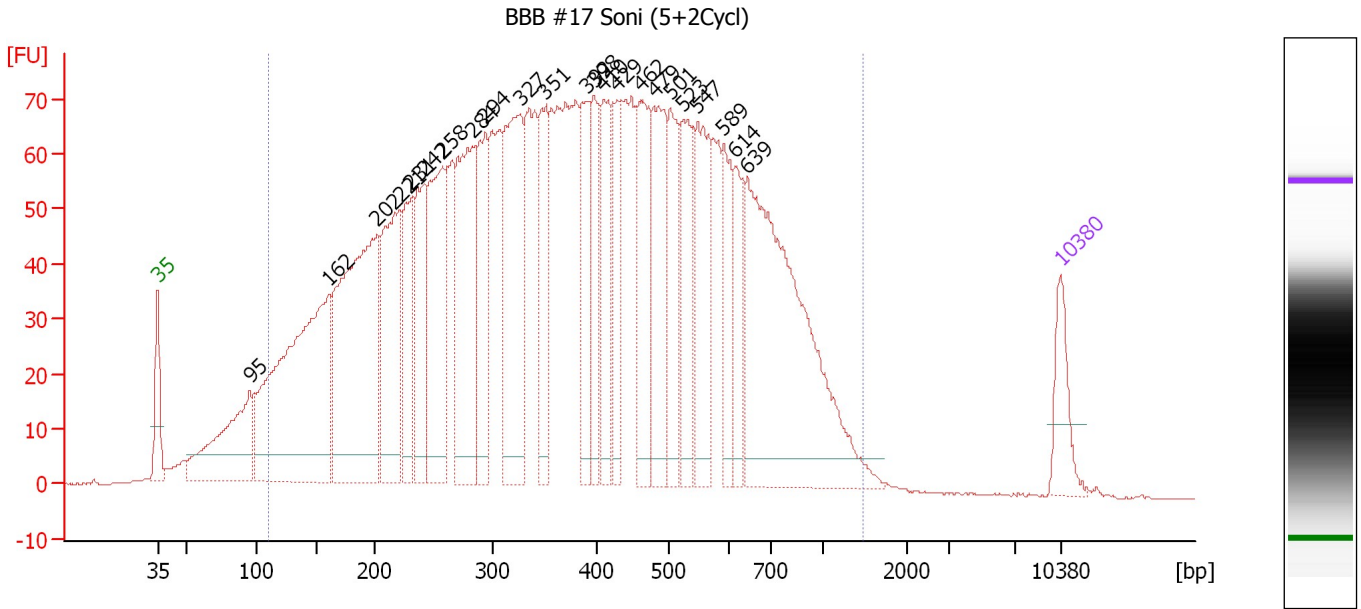
**Region table for sample 8 : BBB #15 750bp Lib**

From [bp]	To [bp]	Average Size [bp]	Molarity [pmol/l]	Conc. [pg/μl]	Corr. Area	% of Total	Size distribution in CV [%]	Color
445	973	617	4,140.7	1,645.38	1,207.3	82	14.5	Blue

Assay Class: High Sensitivity DNA Assay  
 Data Path: C:\...ents and Settings\Bioanalyzer\2012-06-07\2012-06-07\_003.xad

Created: 6/7/2012 4:28:51 PM  
 Modified: 6/7/2012 5:23:28 PM

**Electropherogram Summary Continued ...**



**Overall Results for sample 9 : BBB #17 Soni (5+2Cycl)**

Number of peaks found: 23                      Corr. Area 1: 3,311.2  
 Noise: 0.1

**Peak table for sample 9 : BBB #17 Soni (5+2Cycl)**

Peak	Size [bp]	Conc. [pg/μl]	Molarity [pmol/l]	Observations
1	35	125.00	5,411.3	Lower Marker
2	95	350.91	5,583.0	
3	162	925.30	8,680.7	
4	202	777.70	5,844.4	
5	221	390.19	2,674.8	
6	231	203.43	1,334.3	
7	242	246.77	1,547.9	
8	258	365.83	2,151.5	
9	284	420.95	2,248.2	
10	294	240.46	1,238.2	
11	327	429.75	1,990.8	
12	351	215.91	931.3	
13	392	189.06	730.3	
14	398	152.37	579.4	
15	410	207.64	767.2	
16	429	147.92	522.0	
17	462	253.55	832.0	
18	479	268.23	847.9	
19	501	186.53	563.6	
20	523	207.29	600.6	
21	547	250.88	695.5	
22	589	145.67	374.4	
23	614	114.38	282.2	
24	639	768.81	1,822.8	
25	10,380	75.00	10.9	Upper Marker

Assay Class: High Sensitivity DNA Assay  
Data Path: C:\...ents and Settings\Bioanalyzer\2012-06-07\2012-06-07\_003.xad

Created: 6/7/2012 4:28:51 PM  
Modified: 6/7/2012 5:23:28 PM

**Electropherogram Summary Continued ...**

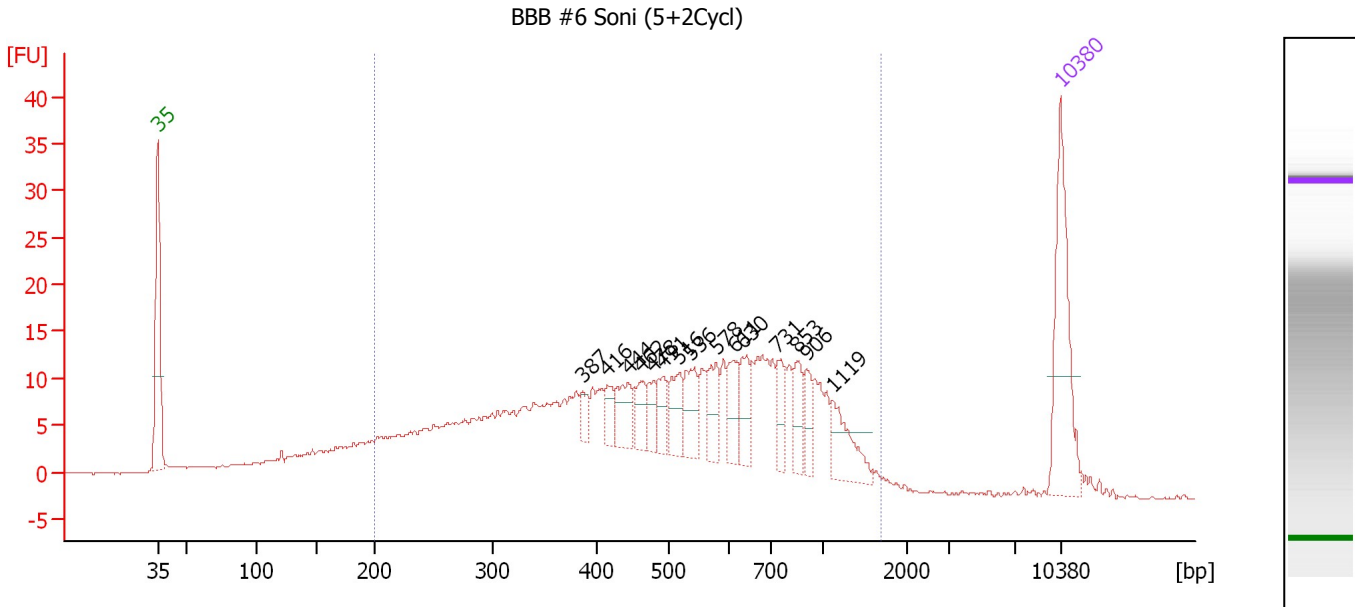
... Region table for sample 9 : BBB #17 Soni (5+2Cycl)

From [bp]	To [bp]	Average Size [bp]	Molarity [pmol/l]	Conc. [pg/μl]	Corr. Area	% of Total	Size distribution in CV [%]	Color
110	1,488	415	48,278.0	9,222.13	3,311.2	95	49.7	■

Assay Class: High Sensitivity DNA Assay  
 Data Path: C:\...ents and Settings\Bioanalyzer\2012-06-07\2012-06-07\_003.xad

Created: 6/7/2012 4:28:51 PM  
 Modified: 6/7/2012 5:23:28 PM

**Electropherogram Summary Continued ...**



**Overall Results for sample 10 : BBB #6 Soni (5+2Cycl)**

Number of peaks found: 15                      Corr. Area 1: 437.9  
 Noise: 0.1

**Peak table for sample 10 : BBB #6 Soni (5+2Cycl)**

Peak	Size [bp]	Conc. [pg/μl]	Molarity [pmol/l]	Observations
1	35	125.00	5,411.3	Lower Marker
2	387	12.38	48.5	
3	416	15.46	56.3	
4	444	29.71	101.3	
5	462	19.28	63.2	
6	478	16.30	51.7	
7	491	21.10	65.1	
8	516	29.33	86.1	
9	536	29.73	84.1	
10	578	24.92	65.4	
11	611	24.90	61.7	
12	630	26.02	62.6	
13	731	21.69	45.0	
14	853	22.74	40.4	
15	906	18.36	30.7	
16	1,119	34.03	46.1	
17	10,380	75.00	10.9	Upper Marker

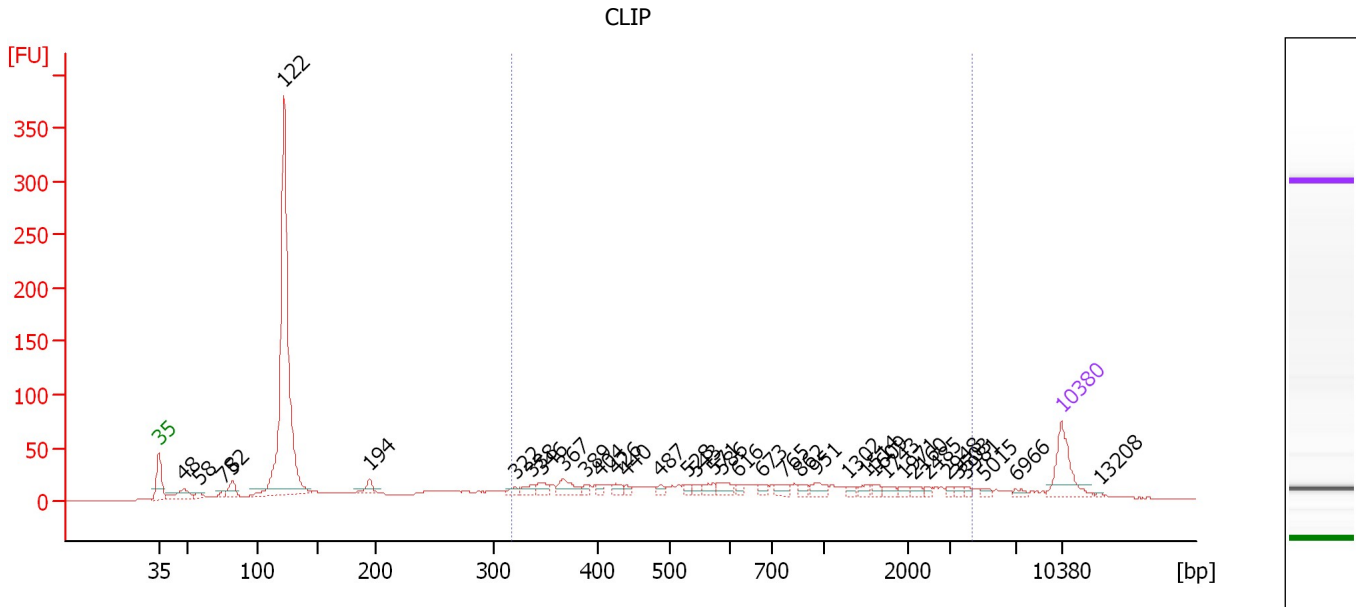
**Region table for sample 10 : BBB #6 Soni (5+2Cycl)**

From [bp]	To [bp]	Average Size [bp]	Molarity [pmol/l]	Conc. [pg/μl]	Corr. Area	% of Total	Size distribution in CV [%]	Color
200	1,686	557	4,090.9	1,124.80	437.9	88	48.4	Blue

Assay Class: High Sensitivity DNA Assay  
 Data Path: C:\...ents and Settings\Bioanalyzer\2012-06-07\2012-06-07\_003.xad

Created: 6/7/2012 4:28:51 PM  
 Modified: 6/7/2012 5:23:28 PM

**Electropherogram Summary Continued ...**



**Overall Results for sample 11 : CLIP**

Number of peaks found: 37                      Corr. Area 1: 585.3  
 Noise: 0.1

**Peak table for sample 11 : CLIP**

Peak	Size [bp]	Conc. [pg/μl]	Molarity [pmol/l]	Observations
1	35	125.00	5,411.3	Lower Marker
2	48	50.85	1,598.3	
3	58	14.86	388.7	
4	75	11.58	234.0	
5	82	37.13	689.6	
6	122	927.60	11,480.7	
7	194	26.50	206.8	
8	322	11.75	55.3	
9	338	17.32	77.6	
10	346	20.26	88.6	
11	367	37.59	155.0	
12	389	9.89	38.5	
13	404	10.96	41.1	
14	426	14.83	52.8	
15	440	9.41	32.4	
16	487	10.88	33.9	
17	528	10.68	30.6	
18	543	9.97	27.8	
19	571	18.81	49.9	
20	586	20.93	54.2	
21	616	9.83	24.2	
22	673	11.58	26.1	
23	765	17.68	35.0	
24	862	11.10	19.5	
25	951	19.19	30.6	
26	1,302	7.01	8.2	



Assay Class: High Sensitivity DNA Assay  
 Data Path: C:\...ents and Settings\Bioanalyzer\2012-06-07\2012-06-07\_003.xad


Created: 6/7/2012 4:28:51 PM  
 Modified: 6/7/2012 5:23:28 PM

**Electropherogram Summary Continued ...**

**... Peak table for sample 11 : CLIP**

Peak	Size [bp]	Conc. [pg/µl]	Molarity [pmol/l]	Observations
27	1,514	10.40	10.4	
28	1,609	9.13	8.6	
29	1,743	10.61	9.2	
30	1,971	8.93	6.9	
31	2,160	8.45	5.9	
32	2,485	5.63	3.4	
33	2,948	5.77	3.0	
34	3,503	6.38	2.8	
35	3,981	6.34	2.4	
36	5,015	6.97	2.1	
37	6,966	6.98	1.5	
38	10,380	75.00	10.9	Upper Marker
39	13,208	0.00	0.0	

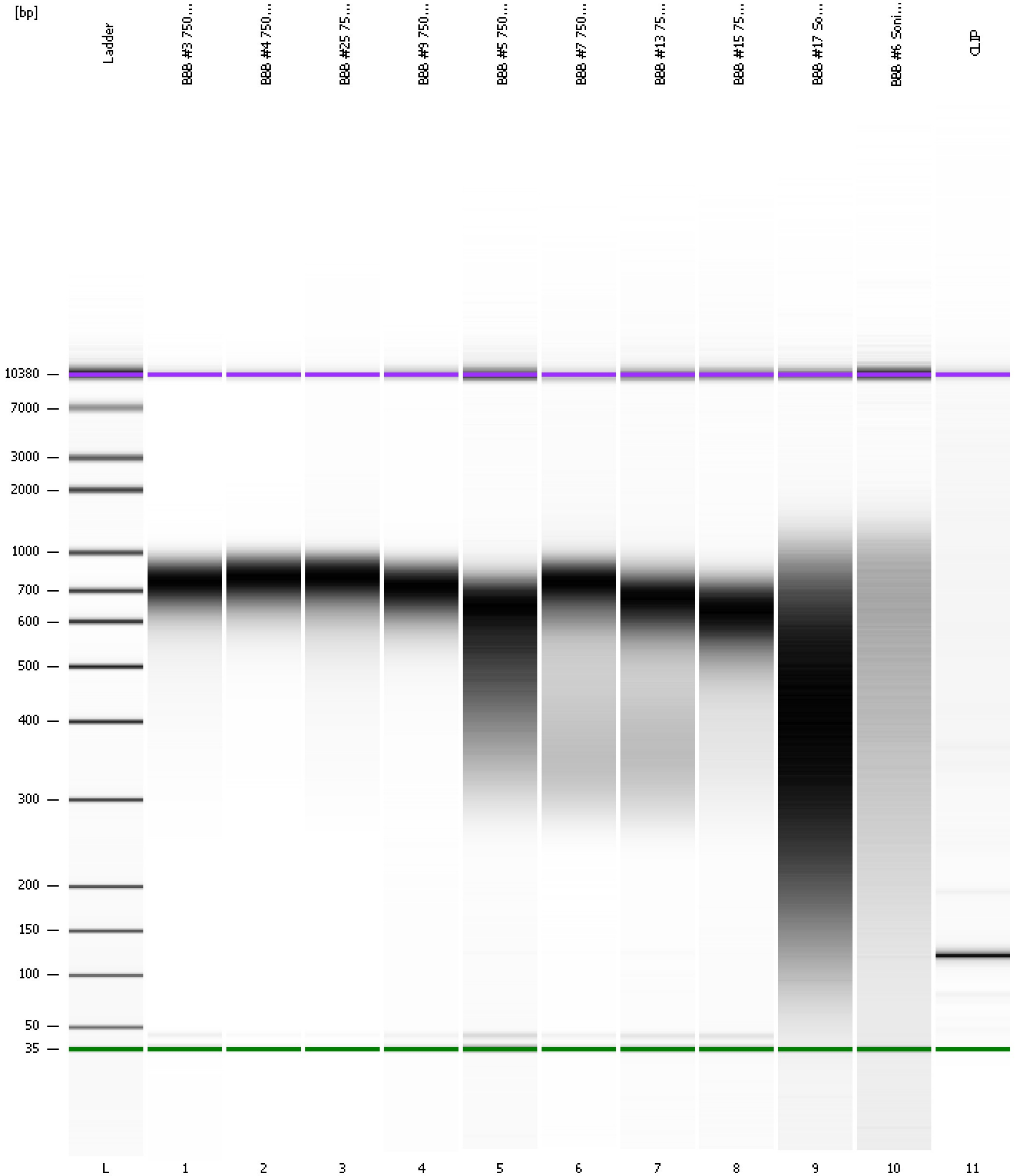
**Region table for sample 11 : CLIP**

From [bp]	To [bp]	Average Size [bp]	Molarity [pmol/l]	Conc. [pg/µl]	Corr. Area	% of Total	Size distribution in CV [%]	Color
318	4,345	990	1,965.5	728.76	585.3	38	85.3	

Assay Class: High Sensitivity DNA Assay  
Data Path: C:\...ents and Settings\Bioanalyzer\2012-06-07\2012-06-07\_003.xad

Created: 6/7/2012 4:28:51 PM  
Modified: 6/7/2012 5:23:28 PM

**Gel Image**



Assay Class: High Sensitivity DNA Assay  
 Data Path: C:\...ents and Settings\Bioanalyzer\2012-06-07\2012-06-07\_003.xad

Created: 6/7/2012 4:28:51 PM  
 Modified: 6/7/2012 5:23:28 PM

**Run Logbook**

Description	Number	Source	Category	Sub Category	Time	Time Zone	User	Host
Run ended on port 1 (Number of wells acquired: 12)		Instrument	Run		6/7/2012 5:10:10 PM	(GMT --07:00) Pacific Standard Time	UC Davis	D8XSMGH1
Run started on port 1 (File: C:\Documents and Settings\Bioanalyzer\2012-06-07\2012-06-07_003.xad)		Instrument	Run		6/7/2012 4:28:56 PM	(GMT --07:00) Pacific Standard Time	UC Davis	D8XSMGH1
Product Number : G2938B		Instrument	Run		6/7/2012 4:28:56 PM	(GMT --07:00) Pacific Standard Time	UC Davis	D8XSMGH1
Name :		Instrument	Run		6/7/2012 4:28:56 PM	(GMT --07:00) Pacific Standard Time	UC Davis	D8XSMGH1
Vendor : Agilent Technologies		Instrument	Run		6/7/2012 4:28:56 PM	(GMT --07:00) Pacific Standard Time	UC Davis	D8XSMGH1
Serial# : DE13701086		Instrument	Run		6/7/2012 4:28:56 PM	(GMT --07:00) Pacific Standard Time	UC Davis	D8XSMGH1
Firmware : C.01.069		Instrument	Run		6/7/2012 4:28:56 PM	(GMT --07:00) Pacific Standard Time	UC Davis	D8XSMGH1
Cartridge : Electrode		Instrument	Run		6/7/2012 4:28:56 PM	(GMT --07:00) Pacific Standard Time	UC Davis	D8XSMGH1