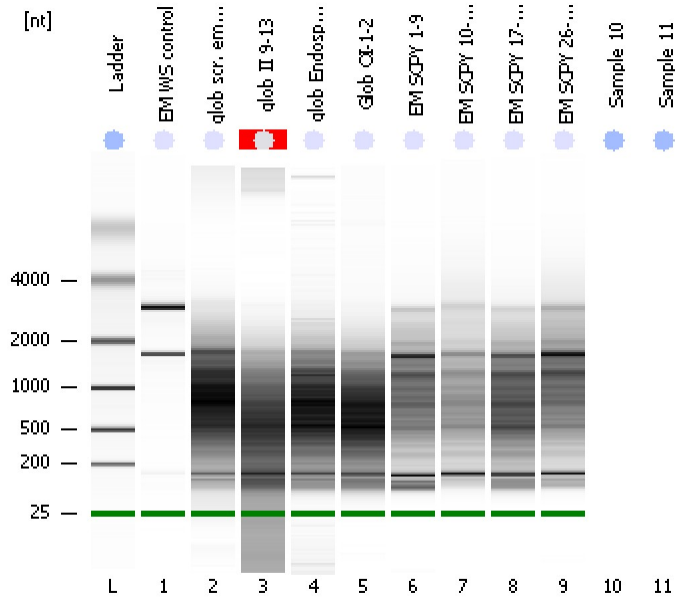


Assay Class: Eukaryote Total RNA Pico
Data Path: C:\...ents and Settings\Bioanalyzer\2012-06-08\2012-06-08_002.xad

Created: 6/8/2012 12:26:02 PM
Modified: 6/8/2012 12:46:14 PM

Electrophoresis File Run Summary



Instrument Information:

Instrument Name: DE13701086 Firmware: C.01.069
Serial#: DE13701086 Type: G2938B

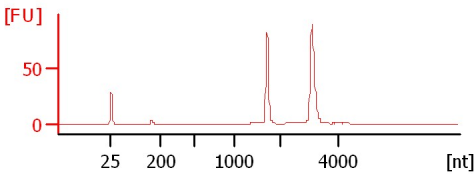
Assay Information:

Assay Origin Path: C:\Program Files\Agilent\2100 bioanalyzer\2100 expert\assays\RNA\Eukaryote Total RNA Pico Series II.xsy
Assay Class: Eukaryote Total RNA Pico
Version: 2.6
Assay Comments: Total RNA Analysis pg sensitivity (Eukaryote)
© Copyright 2003 - 2009 Agilent Technologies, Inc.

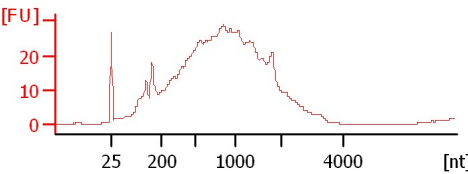
Chip Information:

Chip Lot #:
Reagent Kit Lot #:
Chip Comments:

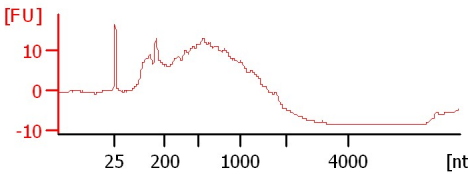
EM WS control
RIN: 9.90



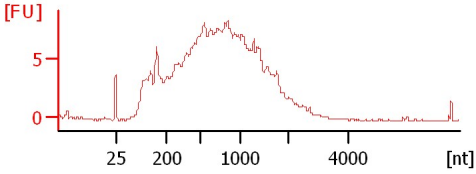
glob scr. embed 6/4
RIN: 2.50



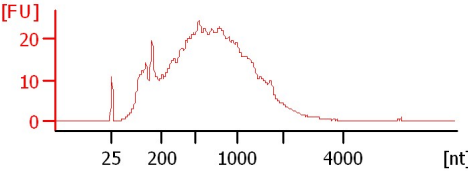
glob II 9-13
RIN N/A



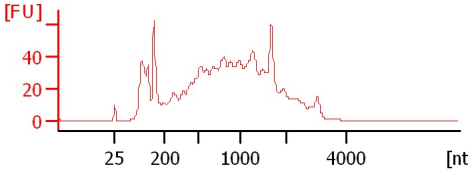
glob Endosperm-9
RIN: 2.20



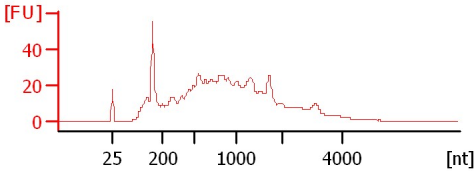
Glob OI-1-2
RIN: 2.10



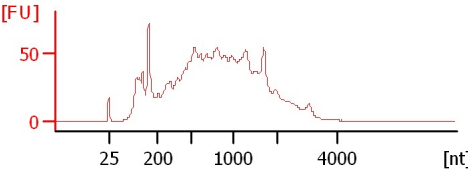
EM SCPY 1-9
RIN: 3



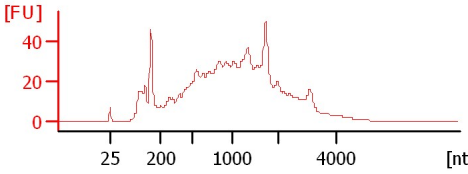
EM SCPY 10-16
RIN: 2.70



EM SCPY 17-25
RIN: 2.60



EM SCPY 26-30
RIN: 3.20



Assay Class: Eukaryote Total RNA Pico
 Data Path: C:\...ents and Settings\Bioanalyzer\2012-06-08\2012-06-08_002.xad

Created: 6/8/2012 12:26:02 PM
 Modified: 6/8/2012 12:46:14 PM

Electrophoresis File Run Summary (Chip Summary)

Sample Name	Sample Comment	Status	Result Label	Result Color
EM WS control		✓	RIN: 9.90	
glob scr. embed 6/4		✓	RIN: 2.50	
glob II 9-13		✓	RIN N/A	
glob Endosperm-9		✓	RIN: 2.20	
Glob OI-1-2		✓	RIN: 2.10	
EM SCPY 1-9		✓	RIN:3	
EM SCPY 10-16		✓	RIN: 2.70	
EM SCPY 17-25		✓	RIN: 2.60	
EM SCPY 26-30		✓	RIN: 3.20	
Sample 10				
Sample 11				
Ladder		✓	All Other Samples	

Chip Lot #

Reagent Kit Lot #

Chip Comments :

Assay Class: Eukaryote Total RNA Pico
Data Path: C:\...ents and Settings\Bioanalyzer\2012-06-08\2012-06-08_002.xad

Created: 6/8/2012 12:26:02 PM
Modified: 6/8/2012 12:46:14 PM

Electrophoresis Assay Details

General Analysis Settings

Number of Available Sample and Ladder Wells (Max.) : 12
Minimum Visible Range [s] : 17
Maximum Visible Range [s] : 70
Start Analysis Time Range [s] : 18
End Analysis Time Range [s] : 69
Ladder Concentration [pg/ μ l] : 1000
Lower Marker Concentration [pg/ μ l] : 0
Upper Marker Concentration [pg/ μ l] : 0
Used Lower Marker for Quantitation
Standard Curve Fit is Logarithmic
Show Data Aligned to Lower Marker

Integrator Settings

Integration Start Time [s] : 18
Integration End Time [s] : 69
Slope Threshold : 0.6
Height Threshold [FU] : 0.5
Area Threshold : 0.2
Width Threshold [s] : 0.3
Baseline Plateau [s] : 6

Filter Settings

Filter Width [s] : 0.5
Polynomial Order : 4

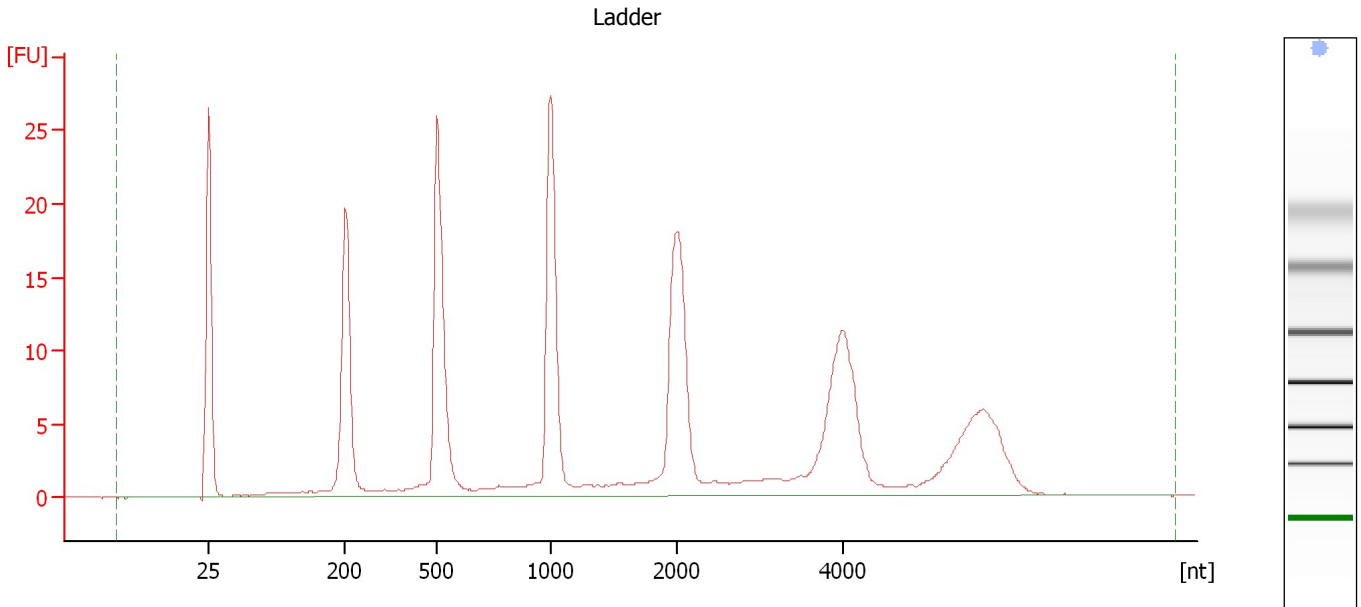
Ladder

Ladder Peak	Size
1	25
2	200
3	500
4	1000
5	2000
6	4000

Assay Class: Eukaryote Total RNA Pico
Data Path: C:\...ents and Settings\Bioanalyzer\2012-06-08\2012-06-08_002.xad

Created: 6/8/2012 12:26:02 PM
Modified: 6/8/2012 12:46:14 PM

Electropherogram Summary



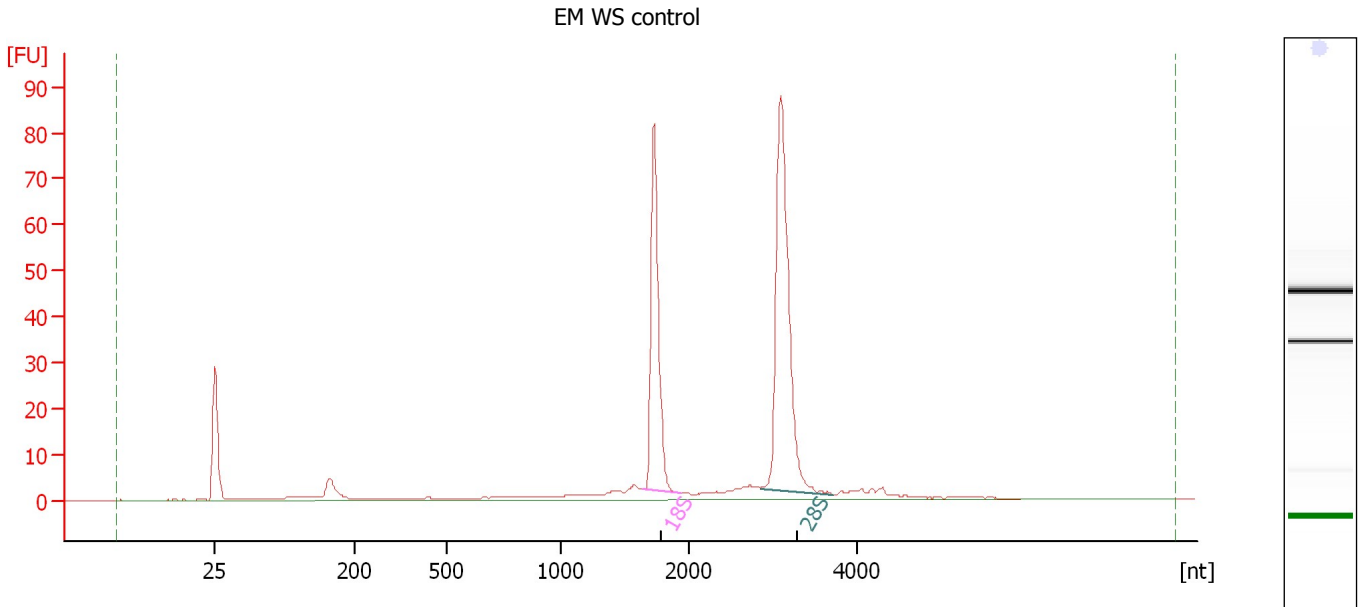
Overall Results for Ladder

RNA Area:	232.8	Result Flagging Color:	
RNA Concentration:	1,000 pg/μl	Result Flagging Label:	All Other Samples

Assay Class: Eukaryote Total RNA Pico
Data Path: C:\...ents and Settings\Bioanalyzer\2012-06-08\2012-06-08_002.xad

Created: 6/8/2012 12:26:02 PM
Modified: 6/8/2012 12:46:14 PM

Electropherogram Summary Continued ...



Overall Results for sample 1 : EM WS control

RNA Area: 274.3 RNA Integrity Number (RIN): 9.9 (B.02.08)
RNA Concentration: 1,178 µg/µl Result Flagging Color:
rRNA Ratio [28s / 18s]: 1.6 Result Flagging Label: RIN: 9.90

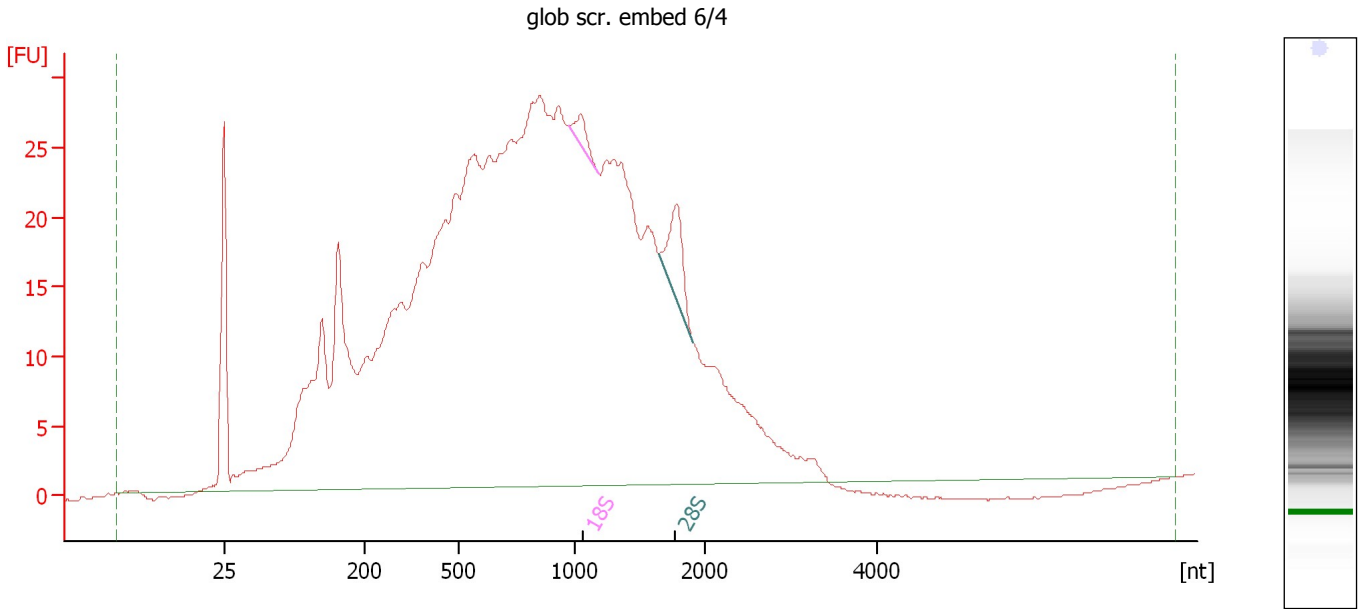
Fragment table for sample 1 : EM WS control

Name	Start Size [nt]	End Size [nt]	Area	% of total Area
18S	1,635	1,928	74.6	27.2
28S	2,847	3,713	116.3	42.4

Assay Class: Eukaryote Total RNA Pico
Data Path: C:\...ents and Settings\Bioanalyzer\2012-06-08\2012-06-08_002.xad

Created: 6/8/2012 12:26:02 PM
Modified: 6/8/2012 12:46:14 PM

Electropherogram Summary Continued ...



Overall Results for sample 2 : glob scr. embed 6/4

RNA Area: 991.1 RNA Integrity Number (RIN): 2.5 (B.02.08)
RNA Concentration: 4,257 pg/μl Result Flagging Color:
rRNA Ratio [28s / 18s]: 3.3 Result Flagging Label: RIN: 2.50

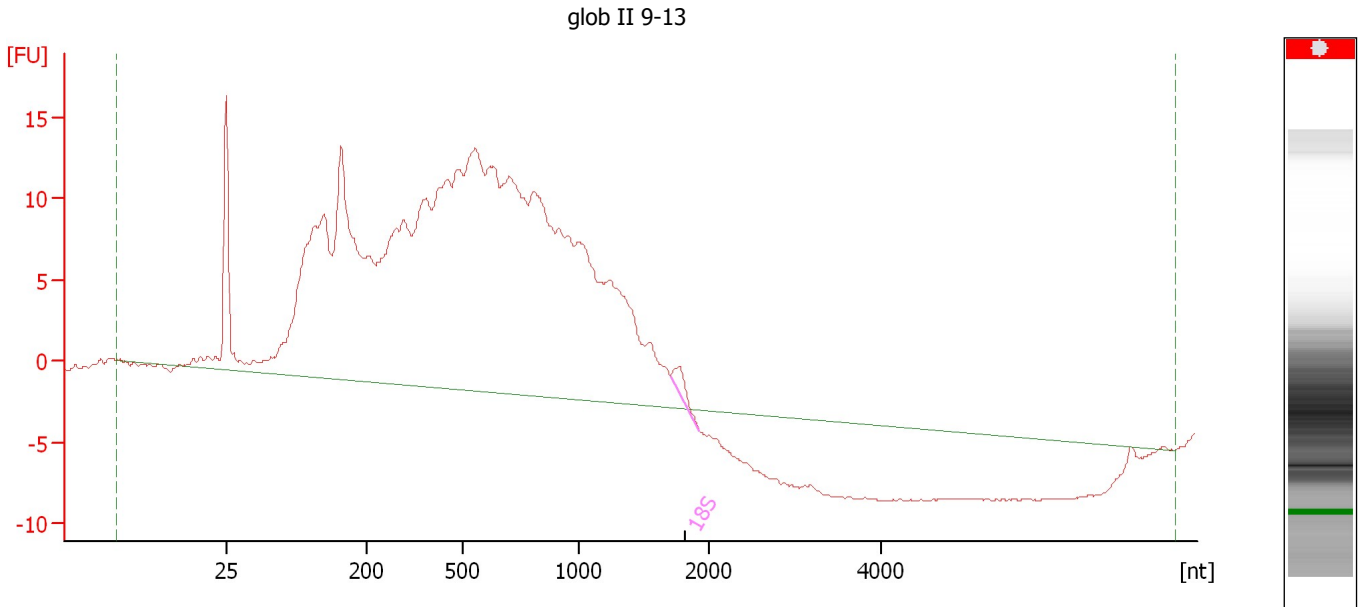
Fragment table for sample 2 : glob scr. embed 6/4

Name	Start Size [nt]	End Size [nt]	Area	% of total Area
18S	966	1,177	3.3	0.3
28S	1,638	1,902	10.8	1.1

Assay Class: Eukaryote Total RNA Pico
Data Path: C:\...ents and Settings\Bioanalyzer\2012-06-08\2012-06-08_002.xad

Created: 6/8/2012 12:26:02 PM
Modified: 6/8/2012 12:46:14 PM

Electropherogram Summary Continued ...



Overall Results for sample 3 : glob II 9-13

RNA Area:	488.0	RNA Integrity Number (RIN):	N/A (B.02.08)
RNA Concentration:	2,096 µg/µl	Result Flagging Color:	
rRNA Ratio [28s / 18s]:	0.0	Result Flagging Label:	RIN N/A

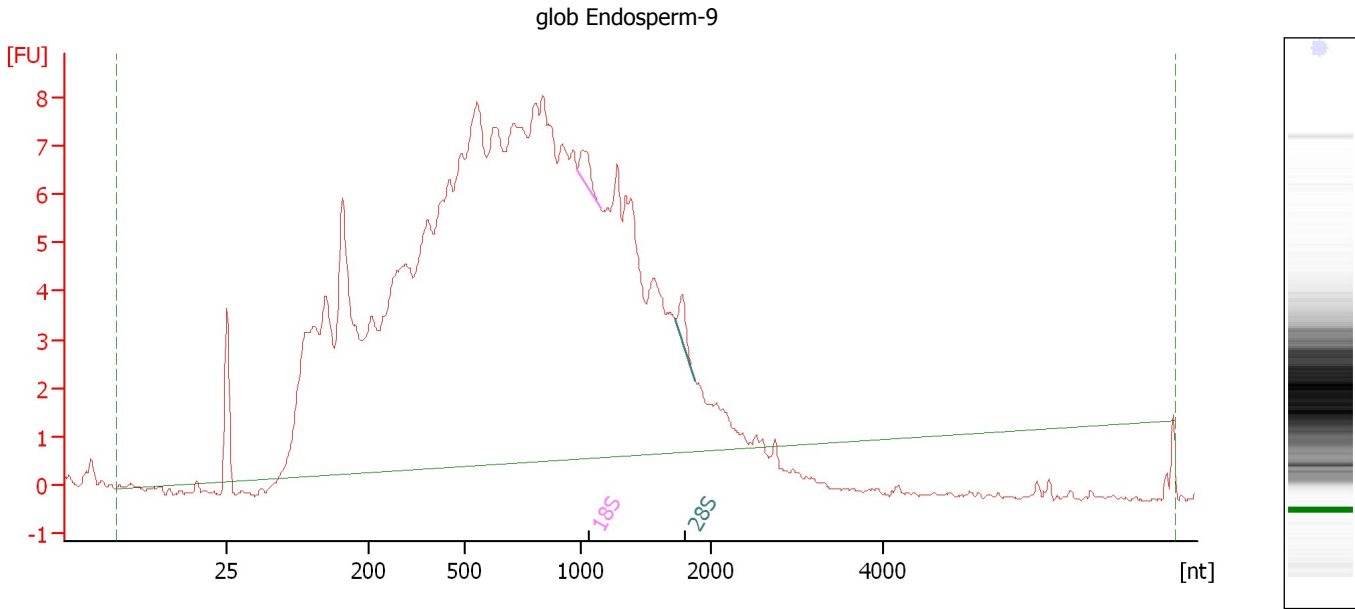
Fragment table for sample 3 : glob II 9-13

Name	Start Size [nt]	End Size [nt]	Area	% of total Area
18S	1,698	1,920	2.1	0.4

Assay Class: Eukaryote Total RNA Pico
Data Path: C:\...ents and Settings\Bioanalyzer\2012-06-08\2012-06-08_002.xad

Created: 6/8/2012 12:26:02 PM
Modified: 6/8/2012 12:46:14 PM

Electropherogram Summary Continued ...



Overall Results for sample 4 : glob Endosperm-9

RNA Area: 250.6 RNA Integrity Number (RIN): 2.2 (B.02.08)
RNA Concentration: 1,076 µg/µl Result Flagging Color:
rRNA Ratio [28s / 18s]: 0.9 Result Flagging Label: RIN: 2.20

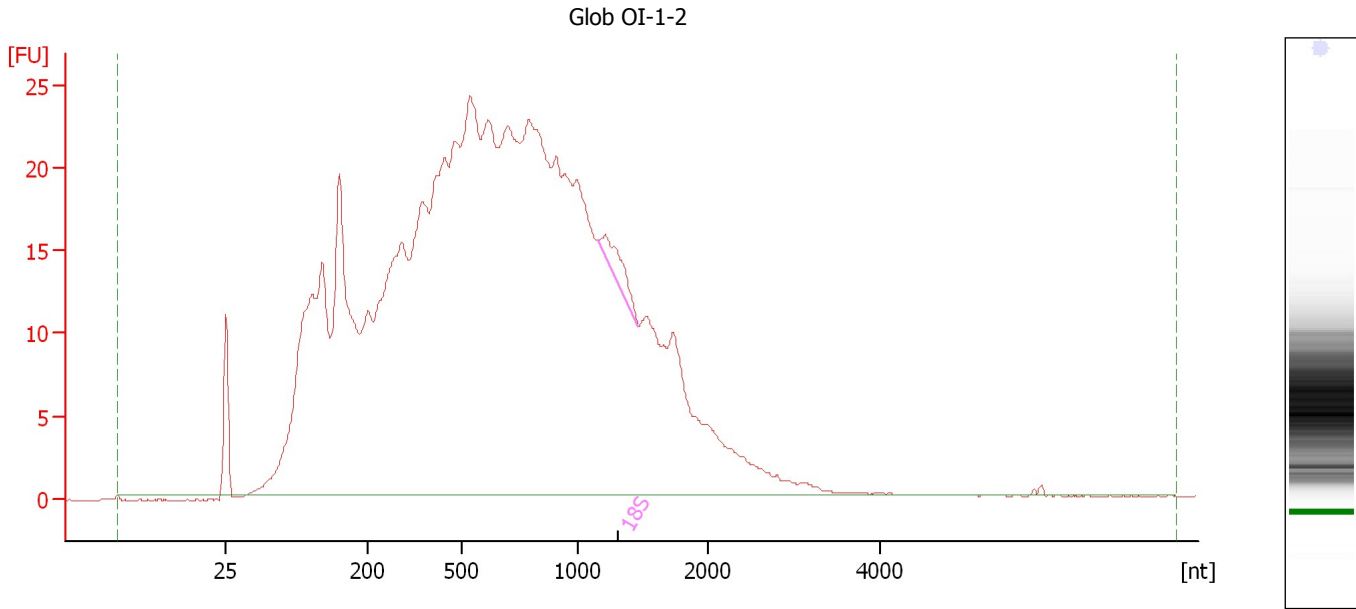
Fragment table for sample 4 : glob Endosperm-9

Name	Start Size [nt]	End Size [nt]	Area	% of total Area
18S	984	1,143	0.9	0.4
28S	1,724	1,863	0.8	0.3

Assay Class: Eukaryote Total RNA Pico
Data Path: C:\...ents and Settings\Bioanalyzer\2012-06-08\2012-06-08_002.xad

Created: 6/8/2012 12:26:02 PM
Modified: 6/8/2012 12:46:14 PM

Electropherogram Summary Continued ...



Overall Results for sample 5 : Glob OI-1-2

RNA Area:	841.7	RNA Integrity Number (RIN):	2.1 (B.02.08)
RNA Concentration:	3,615 pg/μl	Result Flagging Color:	
rRNA Ratio [28s / 18s]:	0.0	Result Flagging Label:	RIN: 2.10

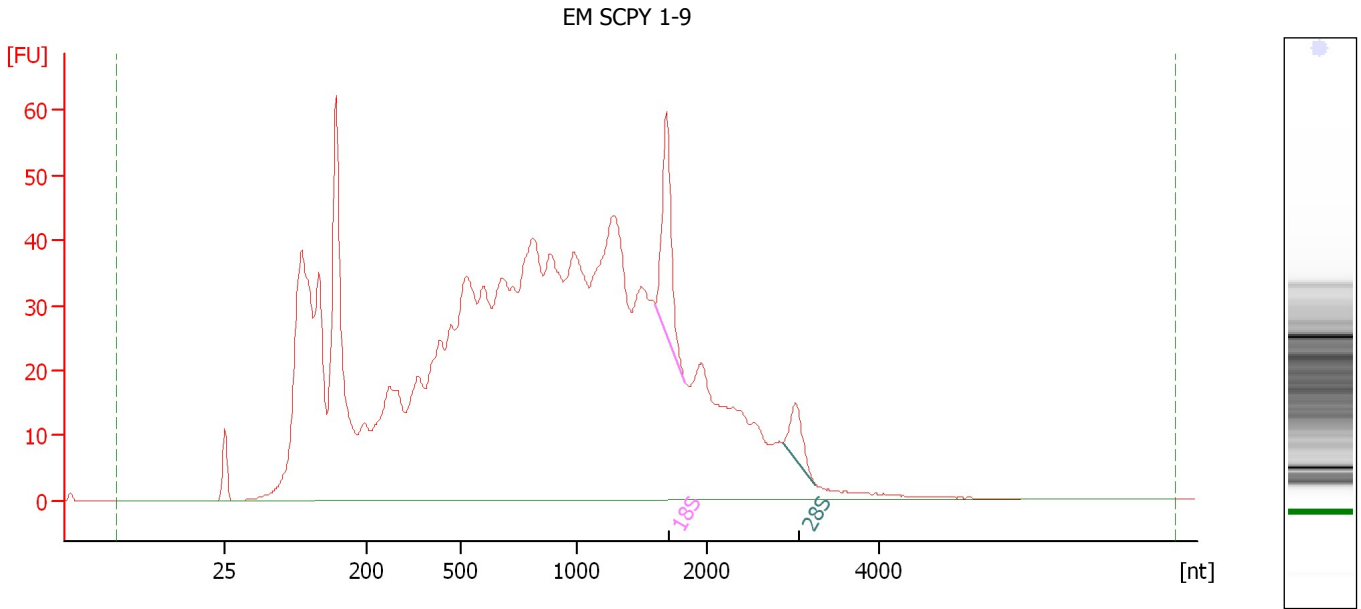
Fragment table for sample 5 : Glob OI-1-2

Name	Start Size [nt]	End Size [nt]	Area	% of total Area
18S	1,155	1,459	4.8	0.6

Assay Class: Eukaryote Total RNA Pico
Data Path: C:\...ents and Settings\Bioanalyzer\2012-06-08\2012-06-08_002.xad

Created: 6/8/2012 12:26:02 PM
Modified: 6/8/2012 12:46:14 PM

Electropherogram Summary Continued ...



Overall Results for sample 6 : EM SCPY 1-9

RNA Area: 1,635.6 RNA Integrity Number (RIN): 3 (B.02.08)
RNA Concentration: 7,025 pg/μl Result Flagging Color:
rRNA Ratio [28s / 18s]: 0.3 Result Flagging Label: RIN:3

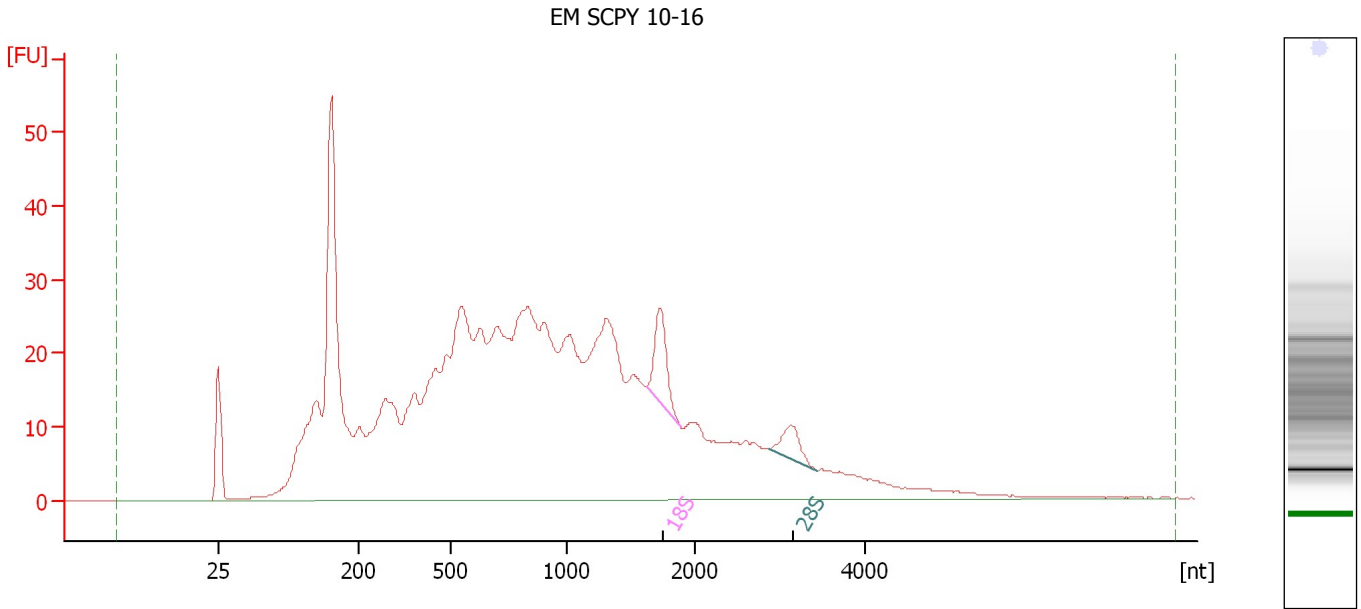
Fragment table for sample 6 : EM SCPY 1-9

Name	Start Size [nt]	End Size [nt]	Area	% of total Area
18S	1,599	1,829	37.0	2.3
28S	2,878	3,265	11.1	0.7

Assay Class: Eukaryote Total RNA Pico
Data Path: C:\...ents and Settings\Bioanalyzer\2012-06-08\2012-06-08_002.xad

Created: 6/8/2012 12:26:02 PM
Modified: 6/8/2012 12:46:14 PM

Electropherogram Summary Continued ...



Overall Results for sample 7 : EM SCPY 10-16

RNA Area: 1,047.6 RNA Integrity Number (RIN): 2.7 (B.02.08)
RNA Concentration: 4,500 pg/μl Result Flagging Color:
rRNA Ratio [28s / 18s]: 0.5 Result Flagging Label: RIN: 2.70

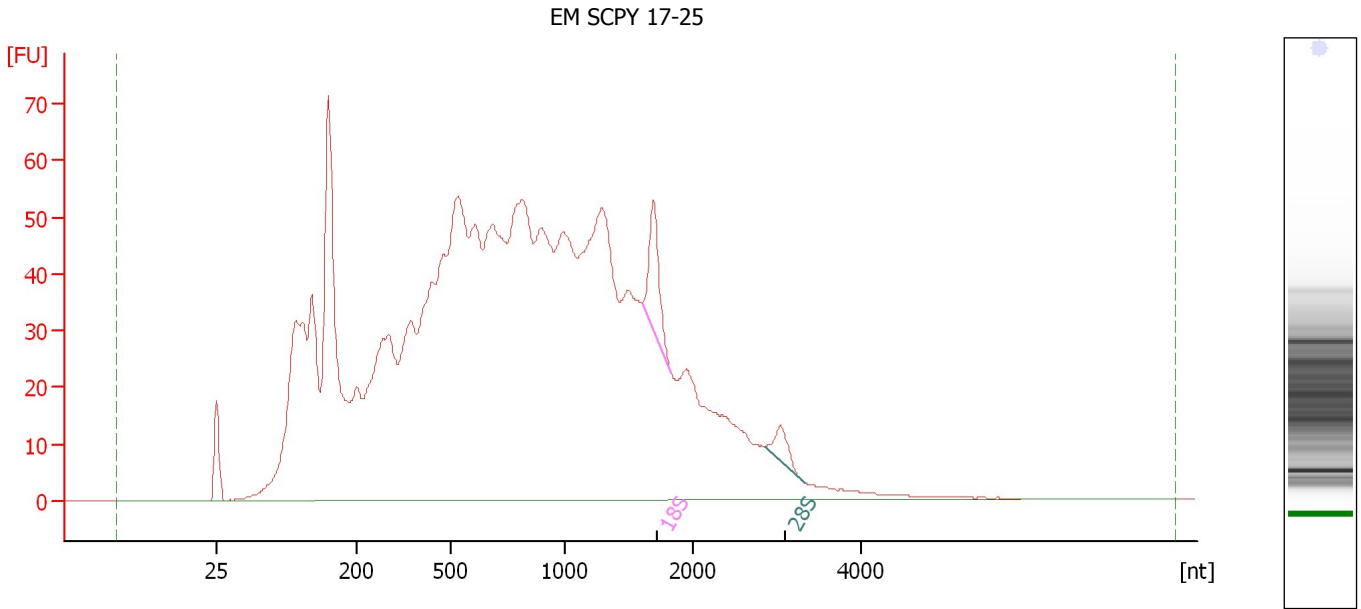
Fragment table for sample 7 : EM SCPY 10-16

Name	Start Size [nt]	End Size [nt]	Area	% of total Area
18S	1,615	1,881	18.5	1.8
28S	2,882	3,440	8.4	0.8

Assay Class: Eukaryote Total RNA Pico
 Data Path: C:\...ents and Settings\Bioanalyzer\2012-06-08\2012-06-08_002.xad

Created: 6/8/2012 12:26:02 PM
 Modified: 6/8/2012 12:46:14 PM

Electropherogram Summary Continued ...



Overall Results for sample 8 : EM SCPY 17-25

RNA Area:	2,104.1	RNA Integrity Number (RIN):	2.6 (B.02.08)
RNA Concentration:	9,037 pg/μl	Result Flagging Color:	
rRNA Ratio [28s / 18s]:	0.3	Result Flagging Label:	RIN: 2.60

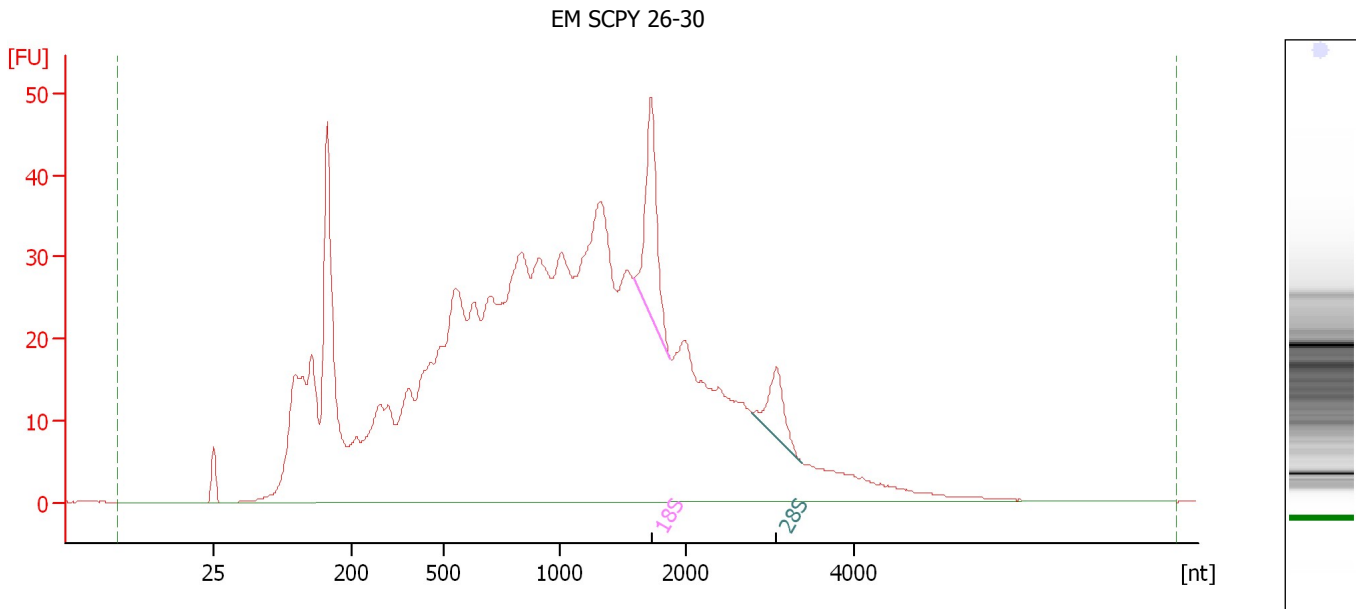
Fragment table for sample 8 : EM SCPY 17-25

Name	Start Size [nt]	End Size [nt]	Area	% of total Area
18S	1,605	1,830	27.5	1.3
28S	2,858	3,327	8.7	0.4

Assay Class: Eukaryote Total RNA Pico
Data Path: C:\...ents and Settings\Bioanalyzer\2012-06-08\2012-06-08_002.xad

Created: 6/8/2012 12:26:02 PM
Modified: 6/8/2012 12:46:14 PM

Electropherogram Summary Continued ...



Overall Results for sample 9 : EM SCPY 26-30

RNA Area: 1,288.0 RNA Integrity Number (RIN): 3.2 (B.02.08)
RNA Concentration: 5,532 pg/μl Result Flagging Color:
rRNA Ratio [28s / 18s]: 0.4 Result Flagging Label: RIN: 3.20

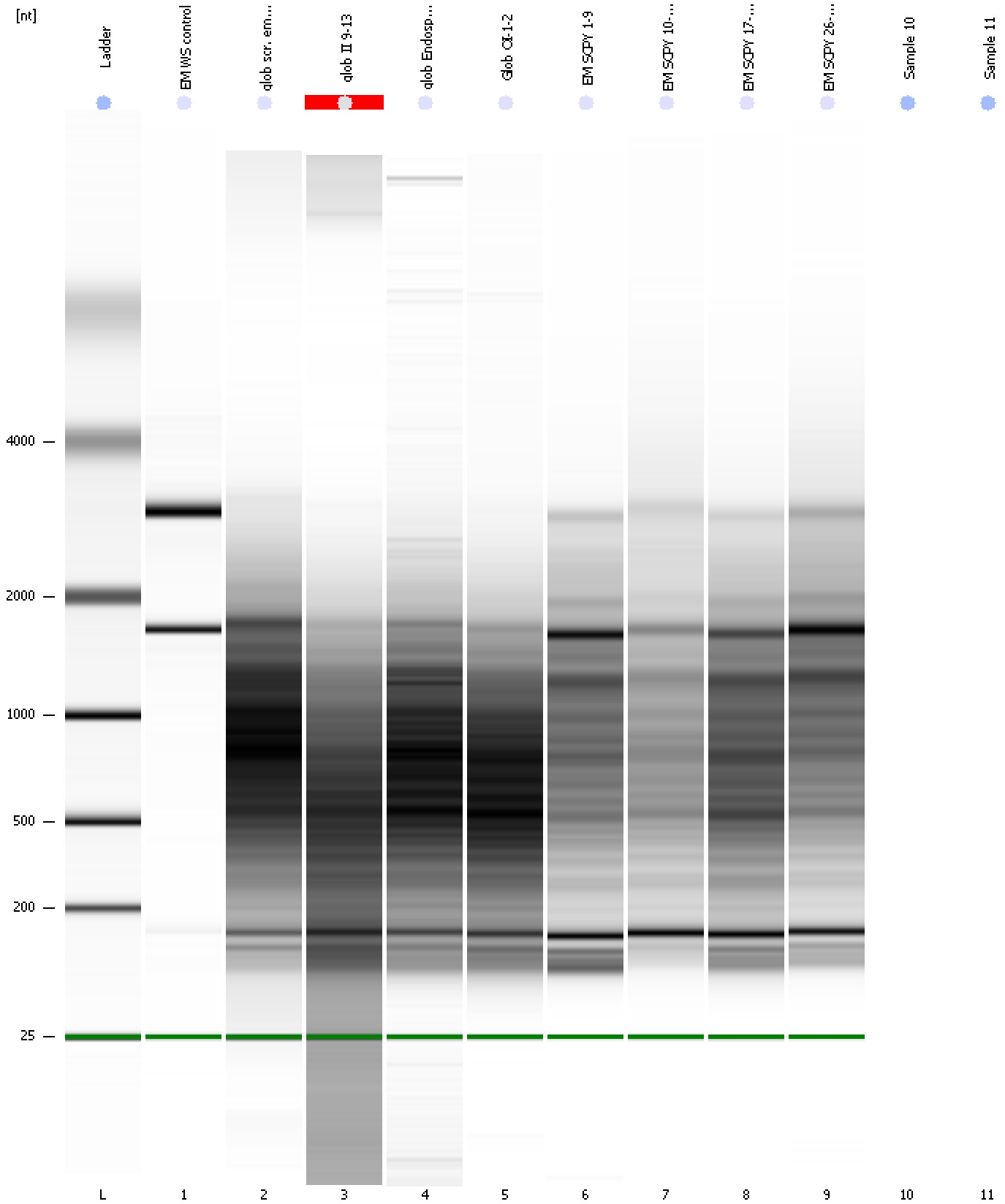
Fragment table for sample 9 : EM SCPY 26-30

Name	Start Size [nt]	End Size [nt]	Area	% of total Area
18S	1,582	1,876	36.8	2.9
28S	2,797	3,386	13.9	1.1

Assay Class: Eukaryote Total RNA Pico
Data Path: C:\...ents and Settings\Bioanalyzer\2012-06-08\2012-06-08_002.xad

Created: 6/8/2012 12:26:02 PM
Modified: 6/8/2012 12:46:14 PM

Gel Image



Assay Class: Eukaryote Total RNA Pico
Data Path: C:\...ents and Settings\Bioanalyzer\2012-06-08\2012-06-08_002.xad

Created: 6/8/2012 12:26:02 PM
Modified: 6/8/2012 12:46:14 PM

Invalid Samples

Sample 10 has not been run, no results available.

Sample 11 has not been run, no results available.

Assay Class: Eukaryote Total RNA Pico
 Data Path: C:\...ents and Settings\Bioanalyzer\2012-06-08\2012-06-08_002.xad

Created: 6/8/2012 12:26:02 PM
 Modified: 6/8/2012 12:46:14 PM

Run Logbook

Description	Number	Source	Category	Sub Category	Time	Time Zone	User	Host
Run ended on port 1 (Number of wells acquired: 10)		Instrument	Run		6/8/2012 12:46:03 PM	(GMT --07:00) Pacific Standard Time	UC Davis	D8XSMGH1
Run started on port 1 (File: C:\Documents and Settings\Bioanalyzer\2012-06-08\2012-06-08_002.xad)		Instrument	Run		6/8/2012 12:26:07 PM	(GMT --07:00) Pacific Standard Time	UC Davis	D8XSMGH1
Product Number : G2938B		Instrument	Run		6/8/2012 12:26:07 PM	(GMT --07:00) Pacific Standard Time	UC Davis	D8XSMGH1
Name :		Instrument	Run		6/8/2012 12:26:07 PM	(GMT --07:00) Pacific Standard Time	UC Davis	D8XSMGH1
Vendor : Agilent Technologies		Instrument	Run		6/8/2012 12:26:07 PM	(GMT --07:00) Pacific Standard Time	UC Davis	D8XSMGH1
Serial# : DE13701086		Instrument	Run		6/8/2012 12:26:07 PM	(GMT --07:00) Pacific Standard Time	UC Davis	D8XSMGH1
Firmware : C.01.069		Instrument	Run		6/8/2012 12:26:07 PM	(GMT --07:00) Pacific Standard Time	UC Davis	D8XSMGH1
Cartridge : Electrode		Instrument	Run		6/8/2012 12:26:07 PM	(GMT --07:00) Pacific Standard Time	UC Davis	D8XSMGH1