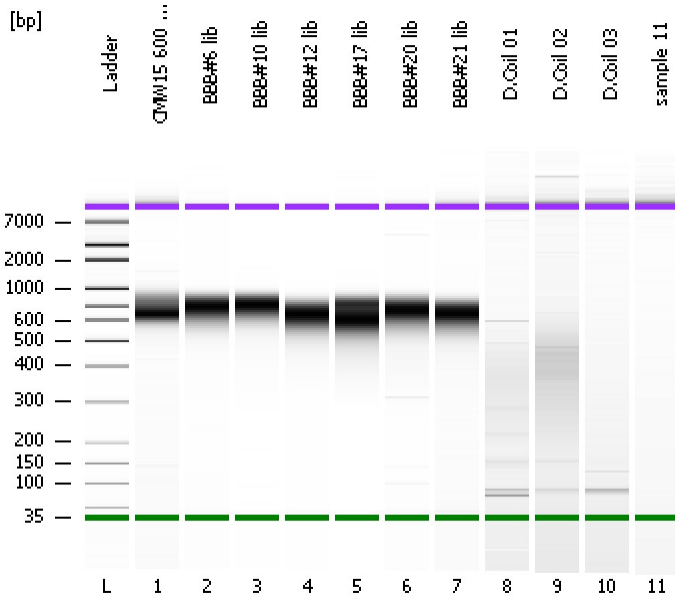


Assay Class: High Sensitivity DNA Assay
Data Path: C:\...ents and Settings\Bioanalyzer\2012-06-12\2012-06-12_003.xad

Created: 6/12/2012 12:20:00 PM
Modified: 6/12/2012 1:01:22 PM

Electrophoresis File Run Summary



Instrument Information:

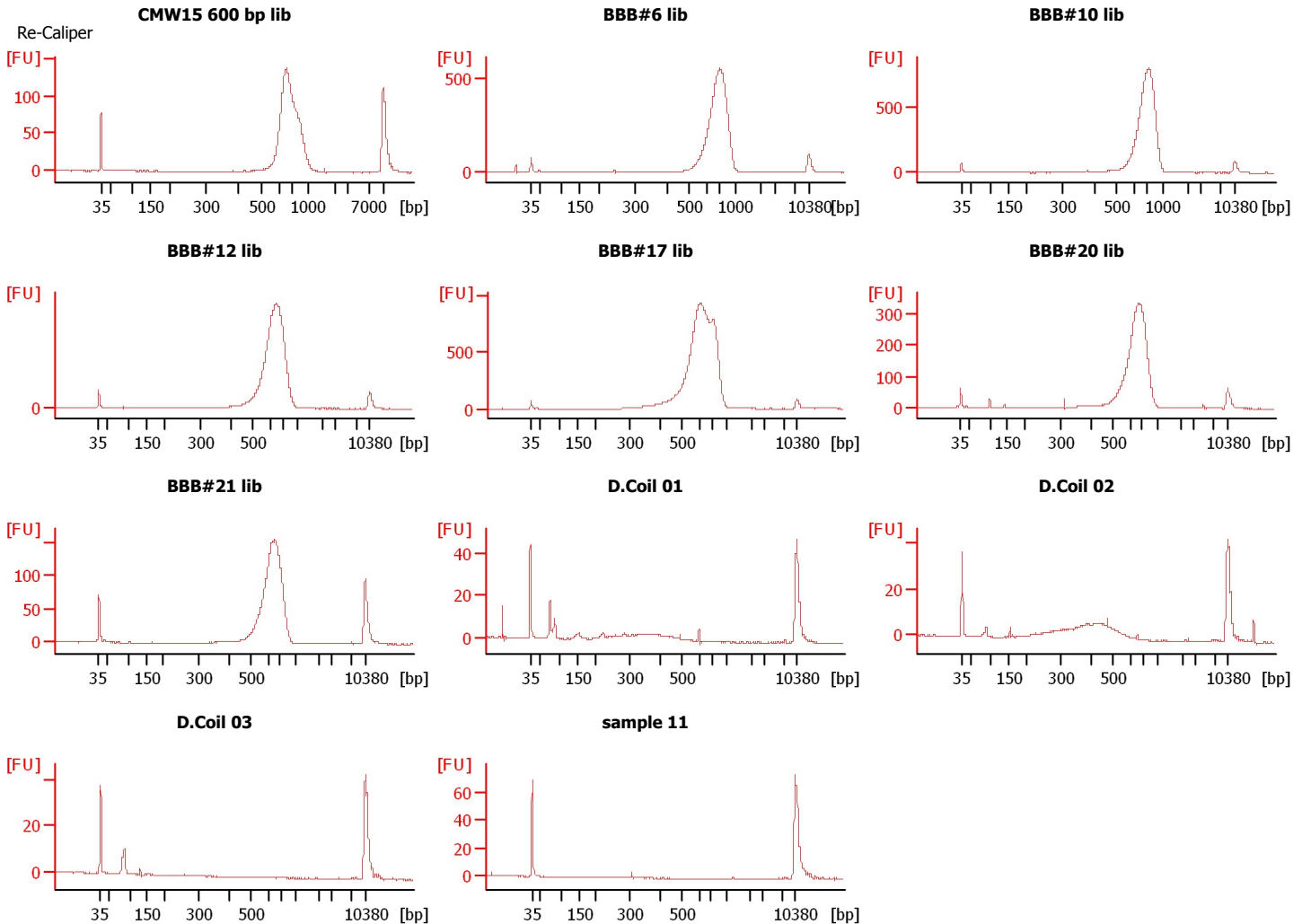
Instrument Name: DE13701086 Firmware: C.01.069
Serial#: DE13701086 Type: G2938B

Assay Information:

Assay Origin Path: C:\Program Files\Agilent\2100 bioanalyzer\2100 expert\assays\dsDNA\High Sensitivity DNA.xsy
Assay Class: High Sensitivity DNA Assay
Version: 1.03
Assay Comments: Copyright © 2003-2010 Agilent Technologies

Chip Information:

Chip Lot #:
Reagent Kit Lot #:
Chip Comments:



Assay Class: High Sensitivity DNA Assay
 Data Path: C:\...ents and Settings\Bioanalyzer\2012-06-12\2012-06-12_003.xad

Created: 6/12/2012 12:20:00 PM
 Modified: 6/12/2012 1:01:22 PM

Electrophoresis File Run Summary (Chip Summary)

Sample Name	Sample Comment	Rest. Digest	Status	Observation	Result Label	Result Color
CMW15 600 bp lib	Re-Caliper	<input type="checkbox"/>	✓			
BBB#6 lib		<input type="checkbox"/>	✓			
BBB#10 lib		<input type="checkbox"/>	✓			
BBB#12 lib		<input type="checkbox"/>	✓			
BBB#17 lib		<input type="checkbox"/>	✓			
BBB#20 lib		<input type="checkbox"/>	✓			
BBB#21 lib		<input type="checkbox"/>	✓			
D.Coil 01		<input type="checkbox"/>	✓			
D.Coil 02		<input type="checkbox"/>	✓			
D.Coil 03		<input type="checkbox"/>	✓			
sample 11		<input type="checkbox"/>	✓			
Ladder		<input type="checkbox"/>	✓			

Chip Lot #

Reagent Kit Lot #

Chip Comments :

Assay Class: High Sensitivity DNA Assay
Data Path: C:\...ents and Settings\Bioanalyzer\2012-06-12\2012-06-12_003.xad

Created: 6/12/2012 12:20:00 PM
Modified: 6/12/2012 1:01:22 PM

Electrophoresis Assay Details

General Analysis Settings

Number of Available Sample and Ladder Wells (Max.) : 12
Minimum Visible Range [s] : 32
Maximum Visible Range [s] : 138
Start Analysis Time Range [s] : 33
End Analysis Time Range [s] : 137.5
Ladder Concentration [pg/μl] : 1950
Uses Standard Area for Ladder Fragments
Lower Marker Concentration [pg/μl] : 125
Upper Marker Concentration [pg/μl] : 75
Used Upper Marker for Quantitation
Standard Curve Fit is Point to Point
Show Data Aligned to Lower and Upper Marker

Integrator Settings

Integration Start Time [s] : 33.05
Integration End Time [s] : 137
Slope Threshold : 0.8
Height Threshold [FU] : 5
Area Threshold : 0.1
Width Threshold [s] : 0.6
Baseline Plateau [s] : 0.5

Filter Settings

Filter Width [s] : 0.5
Polynomial Order : 4

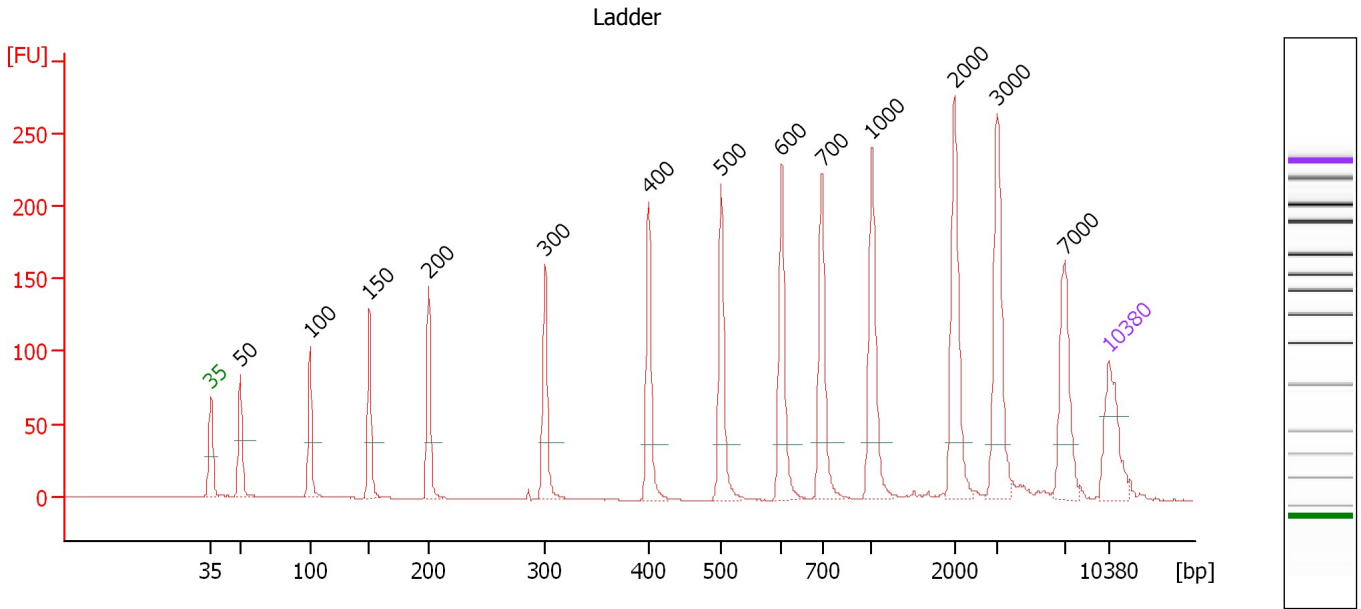
Ladder

Ladder Peak	Size	Area
1	35	160
2	50	210
3	100	208
4	150	221
5	200	242
6	300	270
7	400	305
8	500	306
9	600	336
10	700	321
11	1000	366
12	2000	413
13	3000	411
14	7000	400
15	10380	214

Assay Class: High Sensitivity DNA Assay
 Data Path: C:\...ents and Settings\Bioanalyzer\2012-06-12\2012-06-12_003.xad

Created: 6/12/2012 12:20:00 PM
 Modified: 6/12/2012 1:01:22 PM

Electropherogram Summary



Overall Results for Ladder

Noise: 0.1

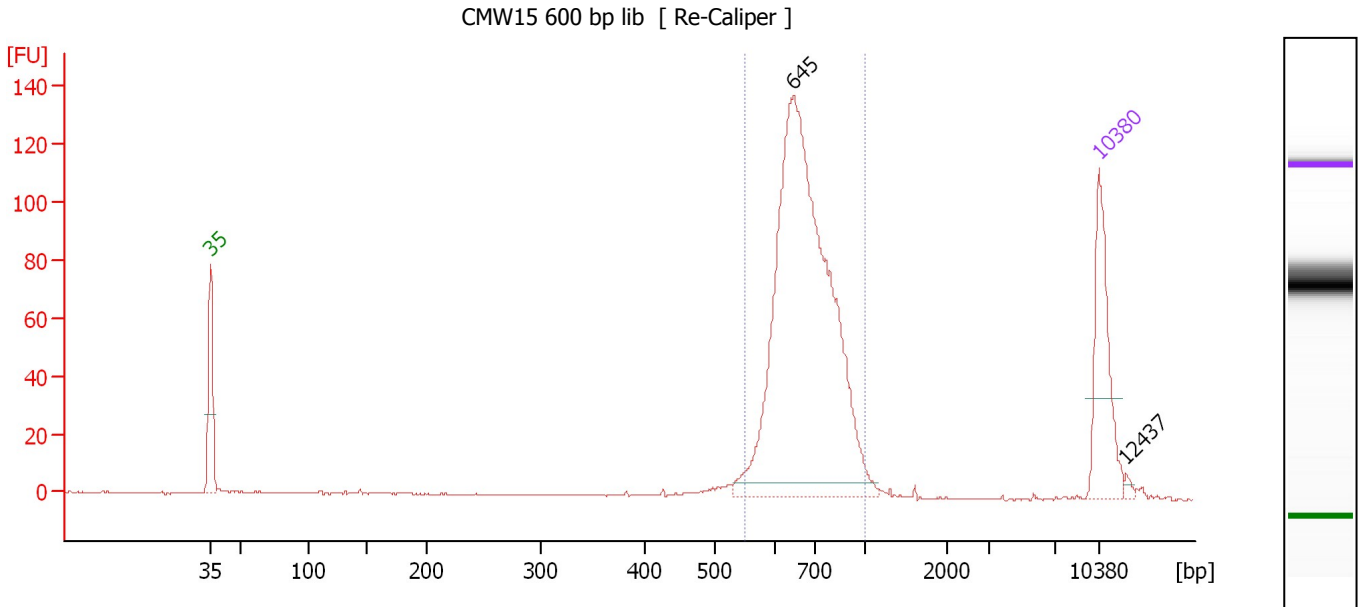
Peak table for Ladder

Peak	Size [bp]	Conc. [pg/μl]	Molarity [pmol/l]	Observations
1	35	125.00	5,411.3	Lower Marker
2	50	150.00	4,545.5	Ladder Peak
3	100	150.00	2,272.7	Ladder Peak
4	150	150.00	1,515.2	Ladder Peak
5	200	150.00	1,136.4	Ladder Peak
6	300	150.00	757.6	Ladder Peak
7	400	150.00	568.2	Ladder Peak
8	500	150.00	454.5	Ladder Peak
9	600	150.00	378.8	Ladder Peak
10	700	150.00	324.7	Ladder Peak
11	1,000	150.00	227.3	Ladder Peak
12	2,000	150.00	113.6	Ladder Peak
13	3,000	150.00	75.8	Ladder Peak
14	7,000	150.00	32.5	Ladder Peak
15	10,380	75.00	10.9	Upper Marker

Assay Class: High Sensitivity DNA Assay
 Data Path: C:\...ents and Settings\Bioanalyzer\2012-06-12\2012-06-12_003.xad

Created: 6/12/2012 12:20:00 PM
 Modified: 6/12/2012 1:01:22 PM

Electropherogram Summary Continued ...



Overall Results for sample 1 : CMW15 600 bp lib

Number of peaks found: 2 Corr. Area 1: 768.1
 Noise: 0.2

Peak table for sample 1 : CMW15 600 bp lib

Peak	Size [bp]	Conc. [pg/μl]	Molarity [pmol/l]	Observations
1	35	125.00	5,411.3	Lower Marker
2	645	606.14	1,424.0	
3	10,380	75.00	10.9	Upper Marker
4	12,437	0.00	0.0	

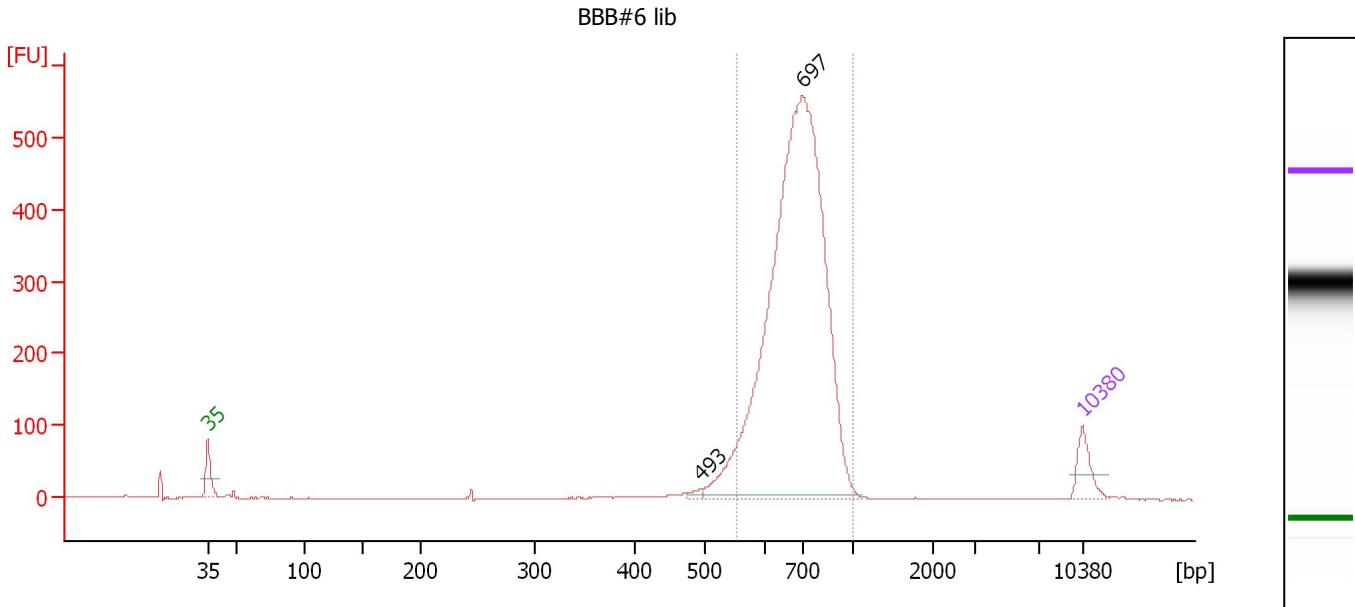
Region table for sample 1 : CMW15 600 bp lib

From [bp]	To [bp]	Average Size [bp]	Molarity [pmol/l]	Conc. [pg/μl]	Corr. Area	% of Total	Size distribution in CV [%]	Color
548	1,000	695	1,299.4	586.08	768.1	92	13.7	Blue

Assay Class: High Sensitivity DNA Assay
 Data Path: C:\...ents and Settings\Bioanalyzer\2012-06-12\2012-06-12_003.xad

Created: 6/12/2012 12:20:00 PM
 Modified: 6/12/2012 1:01:22 PM

Electropherogram Summary Continued ...



Overall Results for sample 2 : BBB#6 lib

Number of peaks found: 2 Corr. Area 1: 3,236.2
 Noise: 0.2

Peak table for sample 2 : BBB#6 lib

Peak	Size [bp]	Conc. [pg/μl]	Molarity [pmol/l]	Observations
1	35	125.00	5,411.3	Lower Marker
2	493	14.98	46.0	
3	697	3,006.34	6,537.5	
4	10,380	75.00	10.9	Upper Marker

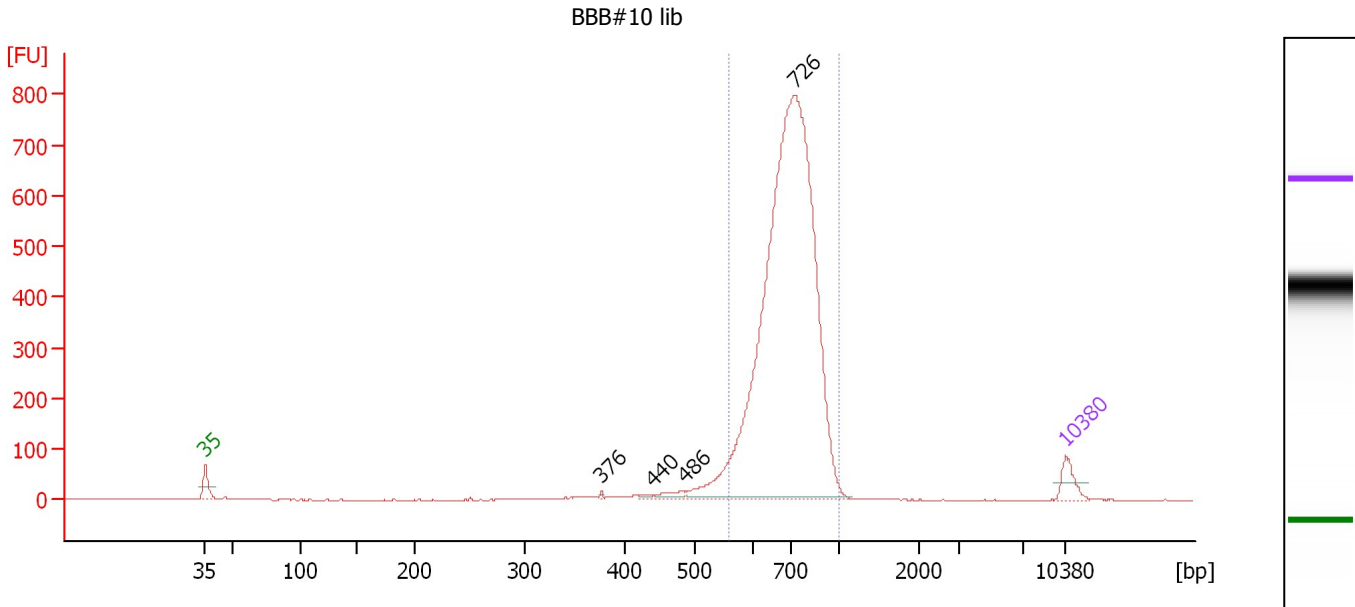
Region table for sample 2 : BBB#6 lib

From [bp]	To [bp]	Average Size [bp]	Molarity [pmol/l]	Conc. [pg/μl]	Corr. Area	% of Total	Size distribution in CV [%]	Color
554	1,000	705	6,199.9	2,840.85	3,236.2	94	12.9	Blue

Assay Class: High Sensitivity DNA Assay
 Data Path: C:\...ents and Settings\Bioanalyzer\2012-06-12\2012-06-12_003.xad

Created: 6/12/2012 12:20:00 PM
 Modified: 6/12/2012 1:01:22 PM

Electropherogram Summary Continued ...



Overall Results for sample 3 : BBB#10 lib

Number of peaks found: 4 Corr. Area 1: 4,320.9
 Noise: 0.2

Peak table for sample 3 : BBB#10 lib

Peak	Size [bp]	Conc. [pg/μl]	Molarity [pmol/l]	Observations
1	35	125.00	5,411.3	Lower Marker
2	376	4.93	19.8	
3	440	12.66	43.6	
4	486	40.84	127.3	
5	726	4,631.96	9,669.5	
6	10,380	75.00	10.9	Upper Marker

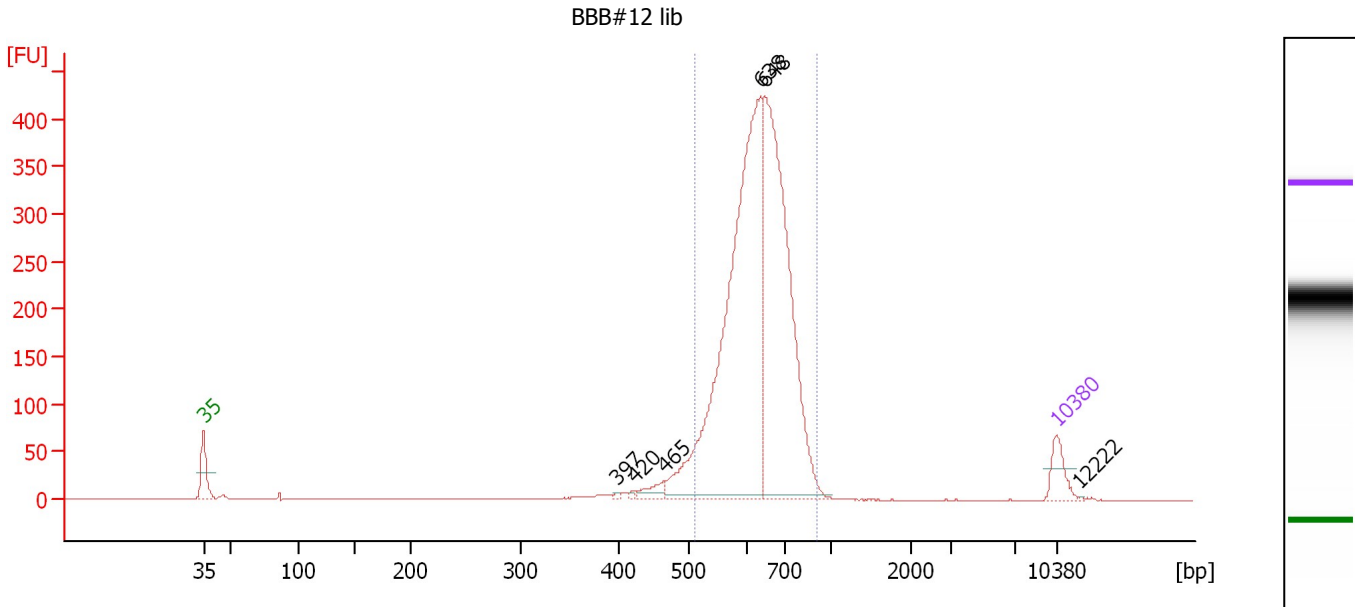
Region table for sample 3 : BBB#10 lib

From [bp]	To [bp]	Average Size [bp]	Molarity [pmol/l]	Conc. [pg/μl]	Corr. Area	% of Total	Size distribution in CV [%]	Color
561	1,000	722	9,472.2	4,443.21	4,320.9	92	12.8	Blue

Assay Class: High Sensitivity DNA Assay
 Data Path: C:\...ents and Settings\Bioanalyzer\2012-06-12\2012-06-12_003.xad

Created: 6/12/2012 12:20:00 PM
 Modified: 6/12/2012 1:01:22 PM

Electropherogram Summary Continued ...



Overall Results for sample 4 : BBB#12 lib

Number of peaks found: 6 Corr. Area 1: 2,758.1
 Noise: 0.2

Peak table for sample 4 : BBB#12 lib

Peak	Size [bp]	Conc. [pg/μl]	Molarity [pmol/l]	Observations
1	35	125.00	5,411.3	Lower Marker
2	397	5.77	22.0	
3	420	7.21	26.0	
4	465	48.42	157.9	
5	638	2,038.53	4,837.9	
6	648	1,484.55	3,470.5	
7	10,380	75.00	10.9	Upper Marker
8	12,222	0.00	0.0	

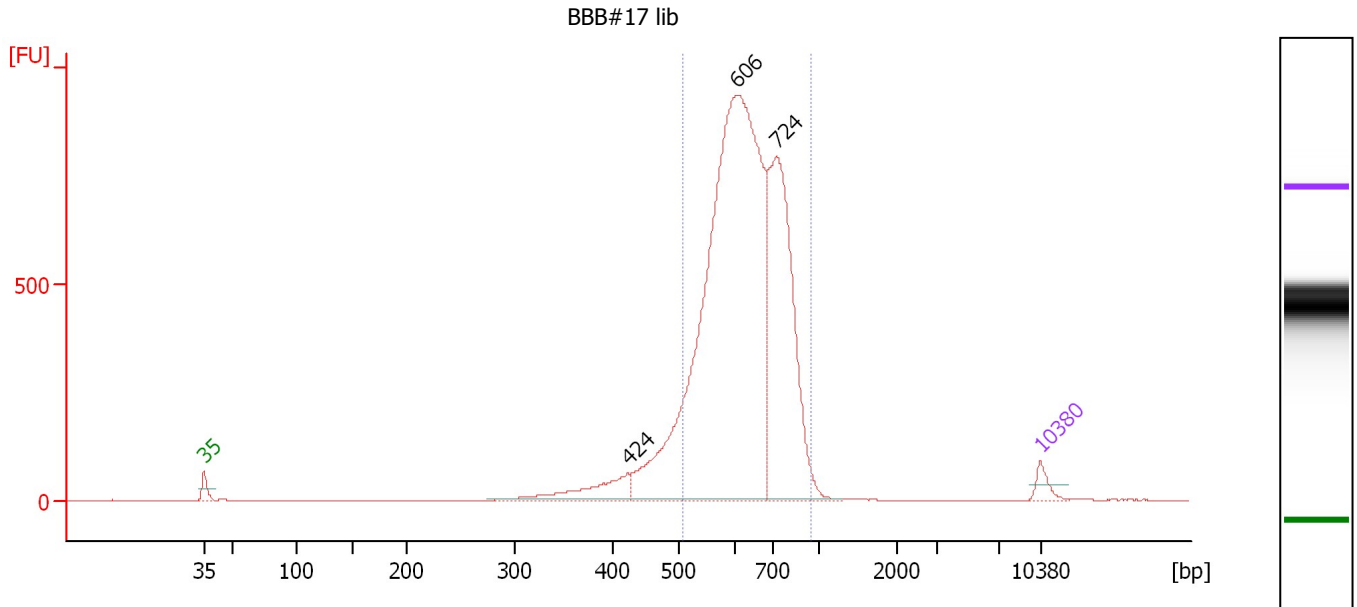
Region table for sample 4 : BBB#12 lib

From [bp]	To [bp]	Average Size [bp]	Molarity [pmol/l]	Conc. [pg/μl]	Corr. Area	% of Total	Size distribution in CV [%]	Color
510	909	640	8,280.0	3,458.61	2,758.1	92	11.0	Blue

Assay Class: High Sensitivity DNA Assay
 Data Path: C:\...ents and Settings\Bioanalyzer\2012-06-12\2012-06-12_003.xad

Created: 6/12/2012 12:20:00 PM
 Modified: 6/12/2012 1:01:22 PM

Electropherogram Summary Continued ...



Overall Results for sample 5 : BBB#17 lib

Number of peaks found: 3 Corr. Area 1: 7,899.7
 Noise: 0.2

Peak table for sample 5 : BBB#17 lib

Peak	Size [bp]	Conc. [pg/μl]	Molarity [pmol/l]	Observations
1	35	125.00	5,411.3	Lower Marker
2	424	401.21	1,434.7	
3	606	6,547.92	16,380.6	
4	724	2,397.73	5,020.4	
5	10,380	75.00	10.9	Upper Marker

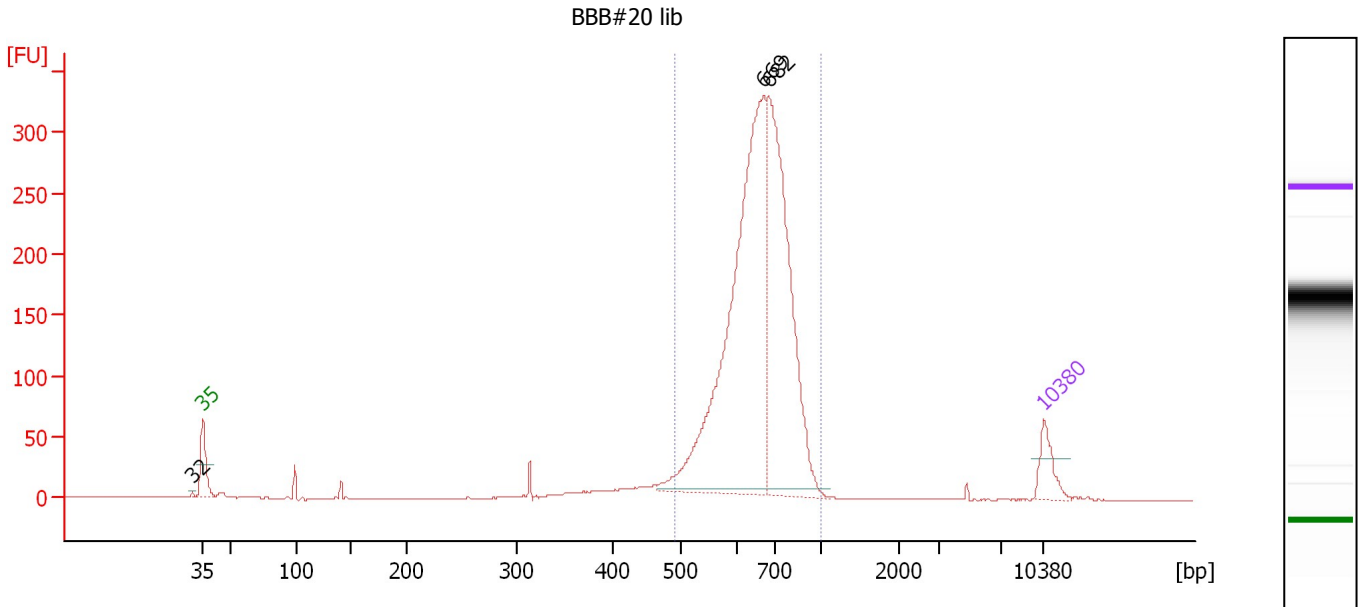
Region table for sample 5 : BBB#17 lib

From [bp]	To [bp]	Average Size [bp]	Molarity [pmol/l]	Conc. [pg/μl]	Corr. Area	% of Total	Size distribution in CV [%]	Color
505	945	646	20,184.5	8,435.59	7,899.7	88	14.0	Blue

Assay Class: High Sensitivity DNA Assay
 Data Path: C:\...ents and Settings\Bioanalyzer\2012-06-12\2012-06-12_003.xad

Created: 6/12/2012 12:20:00 PM
 Modified: 6/12/2012 1:01:22 PM

Electropherogram Summary Continued ...



Overall Results for sample 6 : BBB#20 lib

Number of peaks found: 3 Corr. Area 1: 2,147.1
 Noise: 0.2

Peak table for sample 6 : BBB#20 lib

Peak	Size [bp]	Conc. [pg/μl]	Molarity [pmol/l]	Observations
1	32	0.00	0.0	
2	35	125.00	5,411.3	Lower Marker
3	669	1,704.59	3,861.2	
4	682	1,127.86	2,507.4	
5	10,380	75.00	10.9	Upper Marker

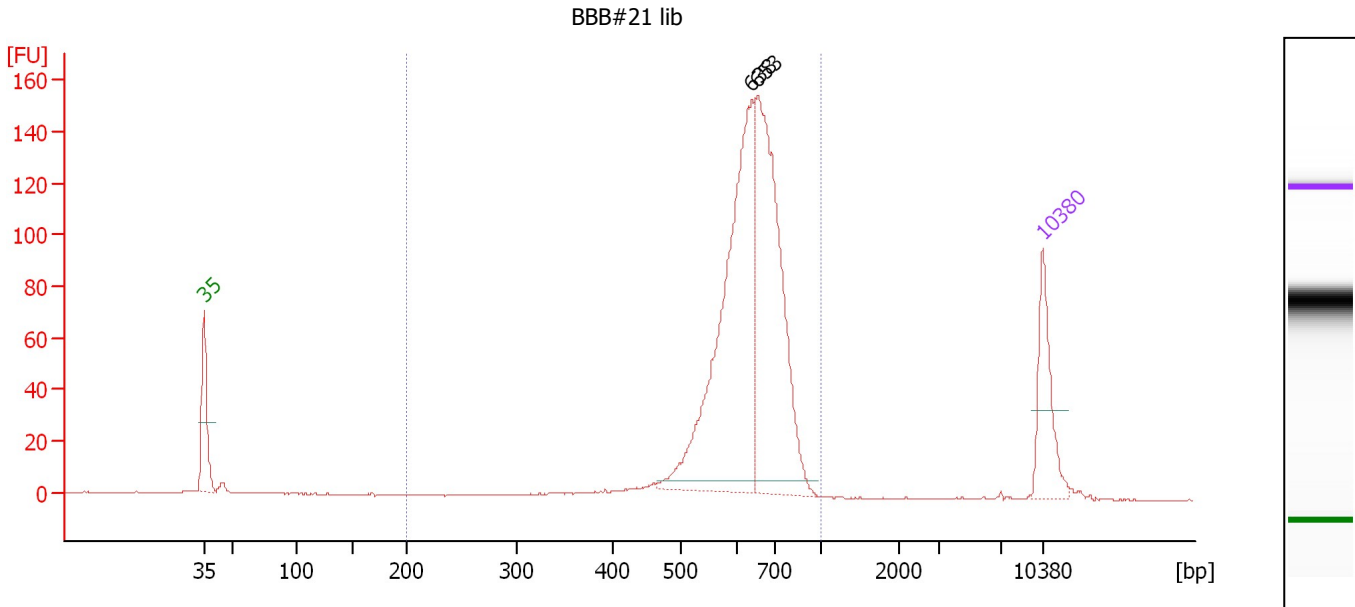
Region table for sample 6 : BBB#20 lib

From [bp]	To [bp]	Average Size [bp]	Molarity [pmol/l]	Conc. [pg/μl]	Corr. Area	% of Total	Size distribution in CV [%]	Color
490	1,000	668	6,658.8	2,885.24	2,147.1	92	13.2	Blue

Assay Class: High Sensitivity DNA Assay
 Data Path: C:\...ents and Settings\Bioanalyzer\2012-06-12\2012-06-12_003.xad

Created: 6/12/2012 12:20:00 PM
 Modified: 6/12/2012 1:01:22 PM

Electropherogram Summary Continued ...



Overall Results for sample 7 : BBB#21 lib

Number of peaks found: 2 Corr. Area 1: 1,033.7
 Noise: 0.1

Peak table for sample 7 : BBB#21 lib

Peak	Size [bp]	Conc. [pg/μl]	Molarity [pmol/l]	Observations
1	35	125.00	5,411.3	Lower Marker
2	638	489.55	1,162.8	
3	653	412.54	956.6	
4	10,380	75.00	10.9	Upper Marker

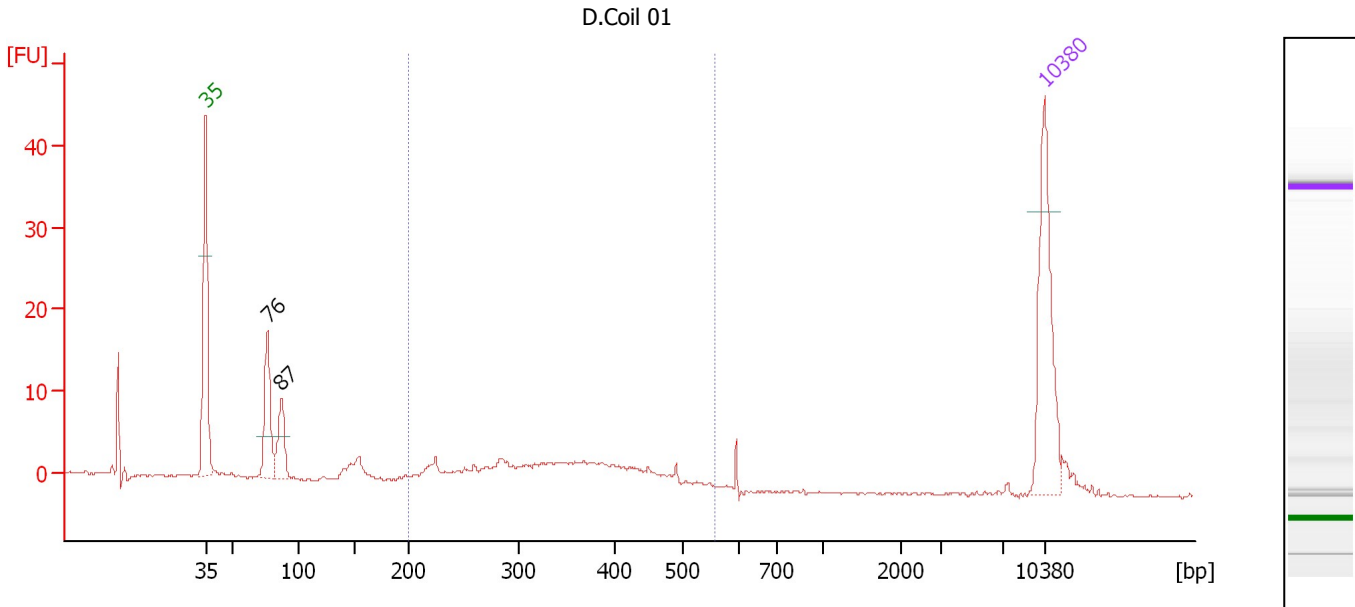
Region table for sample 7 : BBB#21 lib

From [bp]	To [bp]	Average Size [bp]	Molarity [pmol/l]	Conc. [pg/μl]	Corr. Area	% of Total	Size distribution in CV [%]	Color
200	1,000	636	2,378.5	974.68	1,033.7	98	13.2	Blue

Assay Class: High Sensitivity DNA Assay
 Data Path: C:\...ents and Settings\Bioanalyzer\2012-06-12\2012-06-12_003.xad

Created: 6/12/2012 12:20:00 PM
 Modified: 6/12/2012 1:01:22 PM

Electropherogram Summary Continued ...



Overall Results for sample 8 : D.Coil 01

Number of peaks found: 2 Corr. Area 1: 62.3
 Noise: 0.2

Peak table for sample 8 : D.Coil 01

Peak	Size [bp]	Conc. [pg/μl]	Molarity [pmol/l]	Observations
1	35	125.00	5,411.3	Lower Marker
2	76	66.25	1,314.2	
3	87	39.44	686.9	
4	10,380	75.00	10.9	Upper Marker

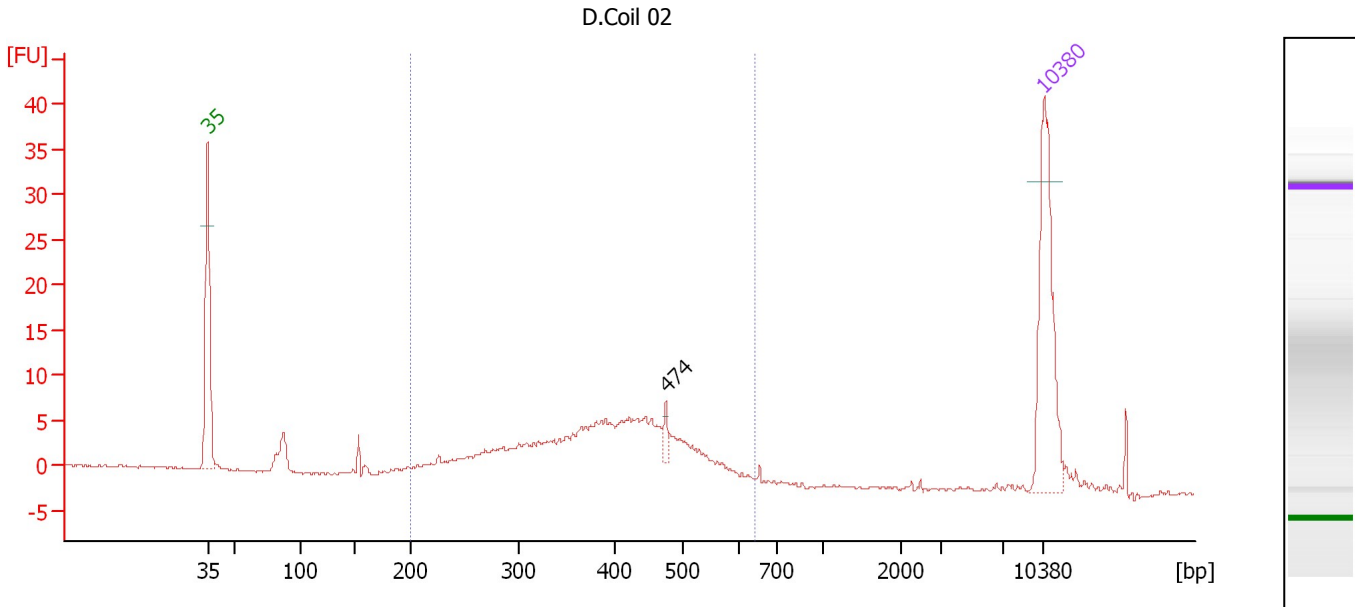
Region table for sample 8 : D.Coil 01

From [bp]	To [bp]	Average Size [bp]	Molarity [pmol/l]	Conc. [pg/μl]	Corr. Area	% of Total	Size distribution in CV [%]	Color
200	557	345	663.0	140.10	62.3	51	22.4	Blue

Assay Class: High Sensitivity DNA Assay
 Data Path: C:\...ents and Settings\Bioanalyzer\2012-06-12\2012-06-12_003.xad

Created: 6/12/2012 12:20:00 PM
 Modified: 6/12/2012 1:01:22 PM

Electropherogram Summary Continued ...



Overall Results for sample 9 : D.Coil 02

Number of peaks found: 1 Corr. Area 1: 144.4
 Noise: 0.1

Peak table for sample 9 : D.Coil 02

Peak	Size [bp]	Conc. [pg/μl]	Molarity [pmol/l]	Observations
1	35	125.00	5,411.3	Lower Marker
2	474	7.07	22.6	
3	10,380	75.00	10.9	Upper Marker

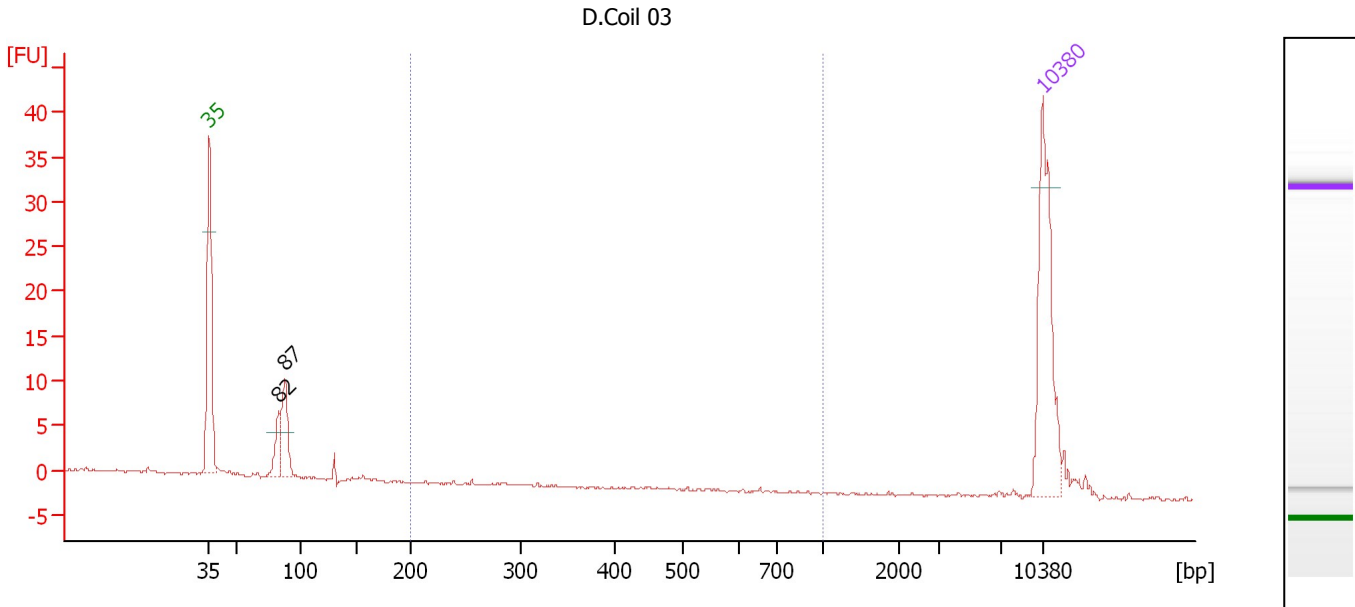
Region table for sample 9 : D.Coil 02

From [bp]	To [bp]	Average Size [bp]	Molarity [pmol/l]	Conc. [pg/μl]	Corr. Area	% of Total	Size distribution in CV [%]	Color
200	641	392	1,346.9	319.58	144.4	87	23.2	Blue

Assay Class: High Sensitivity DNA Assay
 Data Path: C:\...ents and Settings\Bioanalyzer\2012-06-12\2012-06-12_003.xad

Created: 6/12/2012 12:20:00 PM
 Modified: 6/12/2012 1:01:22 PM

Electropherogram Summary Continued ...



Overall Results for sample 10 : D.Coil 03

Number of peaks found: 2 Corr. Area 1: 0.0
 Noise: 0.1

Peak table for sample 10 : D.Coil 03

Peak	Size [bp]	Conc. [pg/μl]	Molarity [pmol/l]	Observations
1	35	125.00	5,411.3	Lower Marker
2	82	24.06	442.0	
3	87	44.29	771.3	
4	10,380	75.00	10.9	Upper Marker

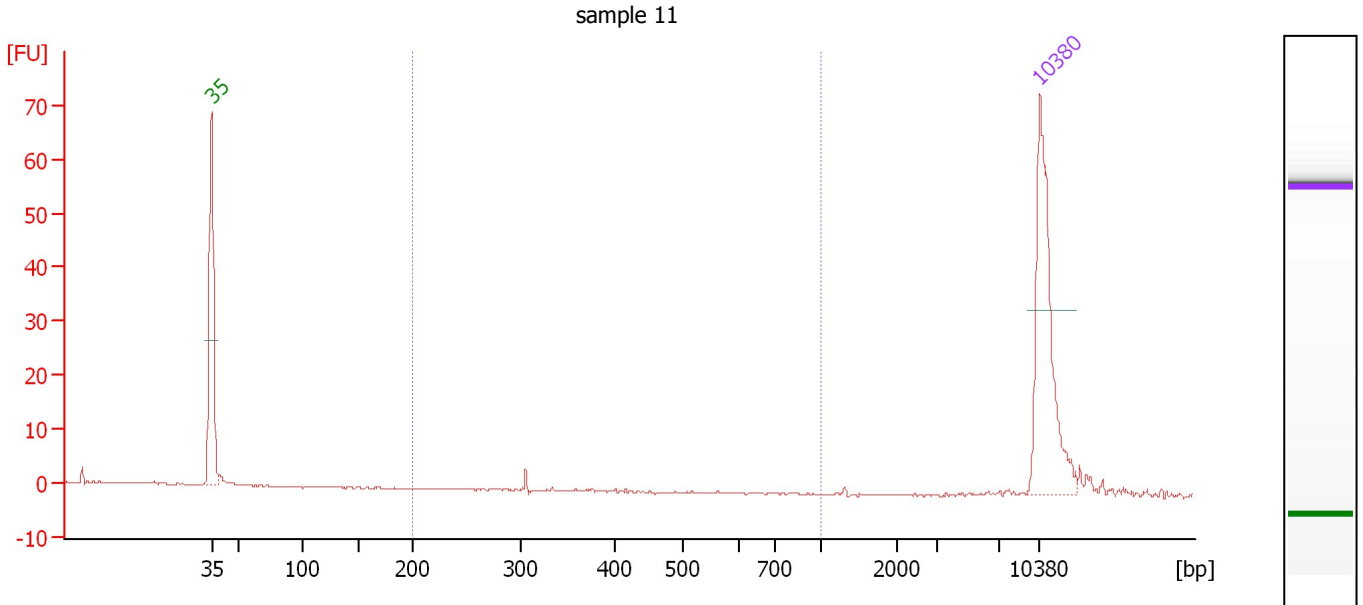
Region table for sample 10 : D.Coil 03

From [bp]	To [bp]	Average Size [bp]	Molarity [pmol/l]	Conc. [pg/μl]	Corr. Area	% of Total	Size distribution in CV [%]	Color
200	1,000	368	0.3	0.06	0.0	0	48.8	Blue

Assay Class: High Sensitivity DNA Assay
 Data Path: C:\...ents and Settings\Bioanalyzer\2012-06-12\2012-06-12_003.xad

Created: 6/12/2012 12:20:00 PM
 Modified: 6/12/2012 1:01:22 PM

Electropherogram Summary Continued ...



Overall Results for sample 11 : sample 11

Number of peaks found: 0 Corr. Area 1: 1.0
 Noise: 0.2

Peak table for sample 11 : sample 11

Peak	Size [bp]	Conc. [pg/μl]	Molarity [pmol/l]	Observations
1	35	125.00	5,411.3	Lower Marker
2	10,380	75.00	10.9	Upper Marker

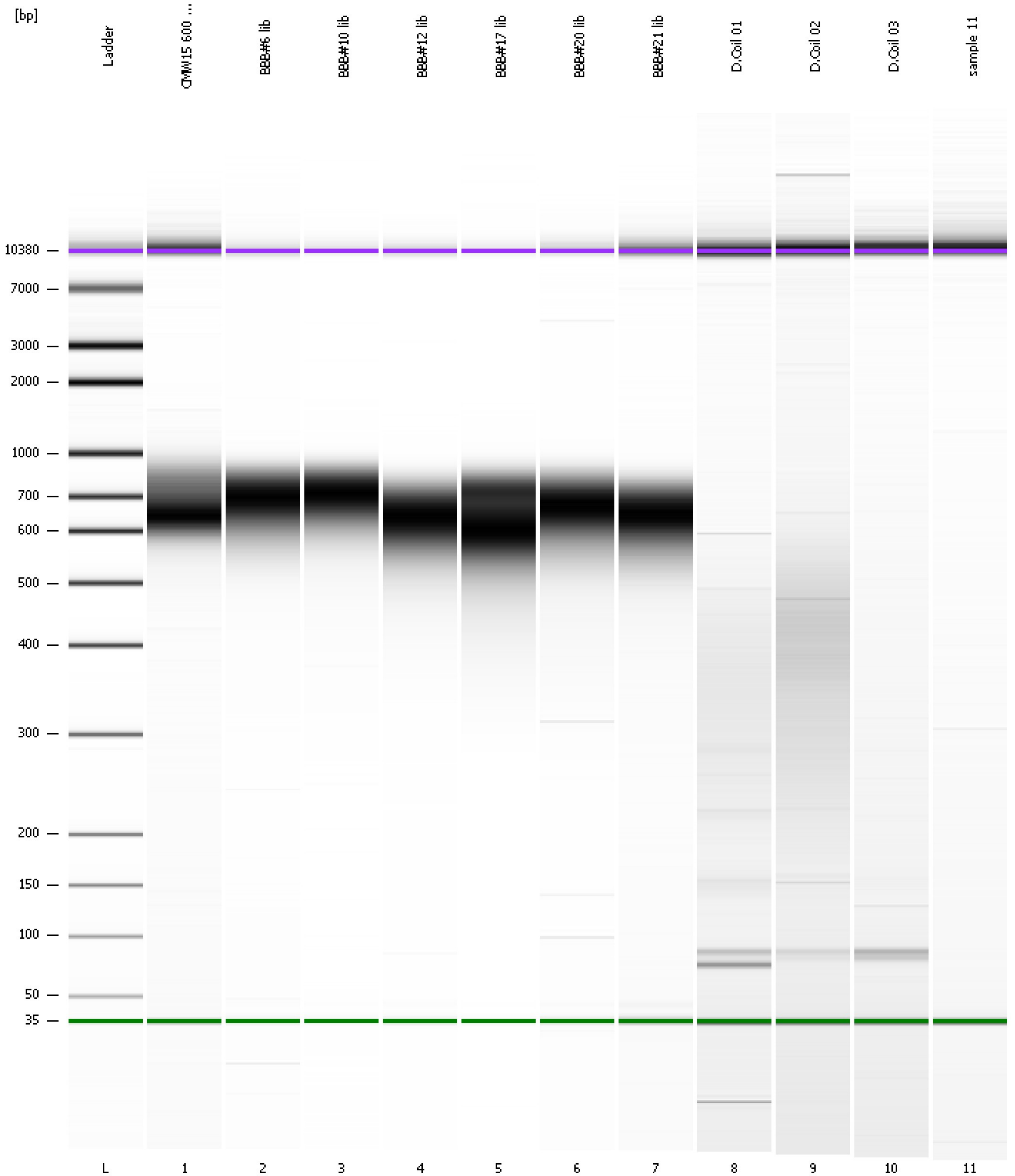
Region table for sample 11 : sample 11

From [bp]	To [bp]	Average Size [bp]	Molarity [pmol/l]	Conc. [pg/μl]	Corr. Area	% of Total	Size distribution in CV [%]	Color
200	1,000	311	5.8	1.20	1.0	6	5.8	Blue

Assay Class: High Sensitivity DNA Assay
Data Path: C:\...ents and Settings\Bioanalyzer\2012-06-12\2012-06-12_003.xad

Created: 6/12/2012 12:20:00 PM
Modified: 6/12/2012 1:01:22 PM

Gel Image



Assay Class: High Sensitivity DNA Assay
 Data Path: C:\...ents and Settings\Bioanalyzer\2012-06-12\2012-06-12_003.xad

Created: 6/12/2012 12:20:00 PM
 Modified: 6/12/2012 1:01:22 PM

Run Logbook

Description	Number	Source	Category	Sub Category	Time	Time Zone	User	Host
Run ended on port 1 (Number of wells acquired: 12)		Instrument	Run		6/12/2012 1:01:18 PM	(GMT --07:00) Pacific Standard Time	UC Davis	D8XSMGH1
Run started on port 1 (File: C:\Documents and Settings\Bioanalyzer\2012-06-12\2012-06-12_003.xad)		Instrument	Run		6/12/2012 12:20:05 PM	(GMT --07:00) Pacific Standard Time	UC Davis	D8XSMGH1
Product Number : G2938B		Instrument	Run		6/12/2012 12:20:05 PM	(GMT --07:00) Pacific Standard Time	UC Davis	D8XSMGH1
Name :		Instrument	Run		6/12/2012 12:20:05 PM	(GMT --07:00) Pacific Standard Time	UC Davis	D8XSMGH1
Vendor : Agilent Technologies		Instrument	Run		6/12/2012 12:20:05 PM	(GMT --07:00) Pacific Standard Time	UC Davis	D8XSMGH1
Serial# : DE13701086		Instrument	Run		6/12/2012 12:20:05 PM	(GMT --07:00) Pacific Standard Time	UC Davis	D8XSMGH1
Firmware : C.01.069		Instrument	Run		6/12/2012 12:20:05 PM	(GMT --07:00) Pacific Standard Time	UC Davis	D8XSMGH1
Cartridge : Electrode		Instrument	Run		6/12/2012 12:20:05 PM	(GMT --07:00) Pacific Standard Time	UC Davis	D8XSMGH1