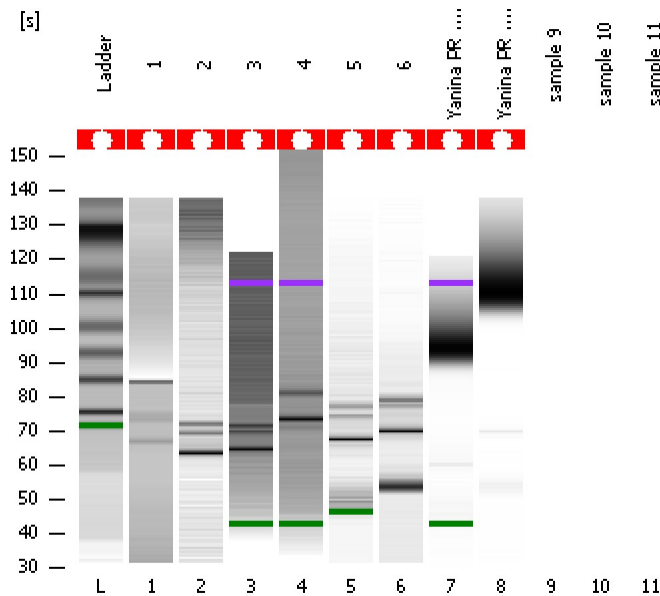


Assay Class: High Sensitivity DNA Assay
Data Path: C:\...ents and Settings\Bioanalyzer\2012-06-12\2012-06-12_001.xad

Created: 6/12/2012 9:13:53 AM
Modified: 6/12/2012 9:46:38 AM

Electrophoresis File Run Summary



Instrument Information:

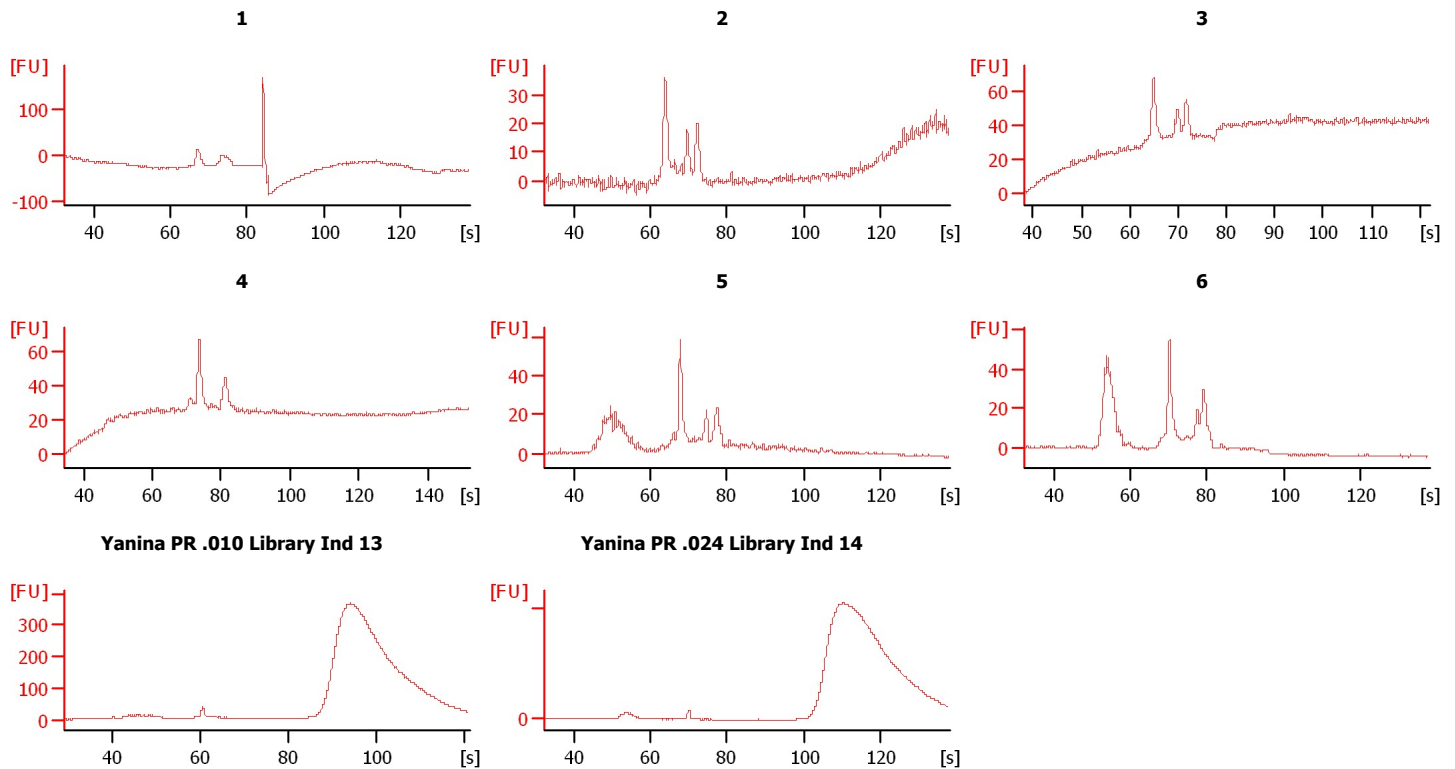
Instrument Name: DE13701086 Firmware: C.01.069
Serial#: DE13701086 Type: G2938B

Assay Information:

Assay Origin Path: C:\Program Files\Agilent\2100 bioanalyzer\2100 expert\assays\dsDNA\High Sensitivity DNA.xsy
Assay Class: High Sensitivity DNA Assay
Version: 1.03
Assay Comments: Copyright © 2003-2010 Agilent Technologies

Chip Information:

Chip Lot #:
Reagent Kit Lot #:
Chip Comments:



Assay Class: High Sensitivity DNA Assay
 Data Path: C:\...ents and Settings\Bioanalyzer\2012-06-12\2012-06-12_001.xad

Created: 6/12/2012 9:13:53 AM
 Modified: 6/12/2012 9:46:38 AM

Electrophoresis File Run Summary (Chip Summary)

Sample Name	Sample Comment	Rest. Digest	Status	Observation	Result Label	Result Color
1		<input type="checkbox"/>	✓			
2		<input type="checkbox"/>	✓			
3		<input type="checkbox"/>	✓			
4		<input type="checkbox"/>	✓			
5		<input type="checkbox"/>	✓			
6		<input type="checkbox"/>	✓			
Yanina PR .010 Library Ind 13		<input type="checkbox"/>	✓			
Yanina PR .024 Library Ind 14		<input type="checkbox"/>	✓			
sample 9		<input type="checkbox"/>				
sample 10		<input type="checkbox"/>				
sample 11		<input type="checkbox"/>				
Ladder		<input type="checkbox"/>	✓			

Chip Lot #

Reagent Kit Lot #

Chip Comments :

Assay Class: High Sensitivity DNA Assay
Data Path: C:\...ents and Settings\Bioanalyzer\2012-06-12\2012-06-12_001.xad

Created: 6/12/2012 9:13:53 AM
Modified: 6/12/2012 9:46:38 AM

Electrophoresis Assay Details

General Analysis Settings

Number of Available Sample and Ladder Wells (Max.) : 12
Minimum Visible Range [s] : 32
Maximum Visible Range [s] : 138
Start Analysis Time Range [s] : 33
End Analysis Time Range [s] : 137.5
Ladder Concentration [pg/μl] : 1950
Uses Standard Area for Ladder Fragments
Lower Marker Concentration [pg/μl] : 125
Upper Marker Concentration [pg/μl] : 75
Used Upper Marker for Quantitation
Standard Curve Fit is Point to Point
Show Data Aligned to Lower and Upper Marker

Integrator Settings

Integration Start Time [s] : 33.05
Integration End Time [s] : 137
Slope Threshold : 0.8
Height Threshold [FU] : 5
Area Threshold : 0.1
Width Threshold [s] : 0.6
Baseline Plateau [s] : 0.5

Filter Settings

Filter Width [s] : 0.5
Polynomial Order : 4

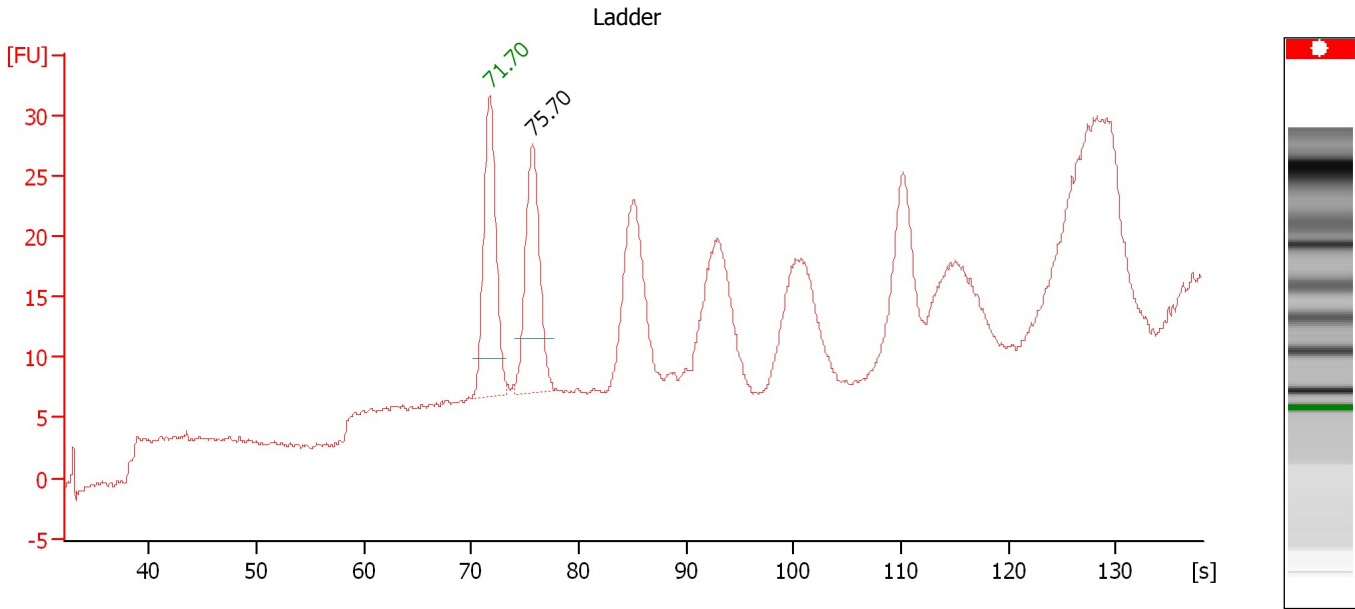
Ladder

Ladder Peak	Size	Area
1	35	160
2	50	210
3	100	208
4	150	221
5	200	242
6	300	270
7	400	305
8	500	306
9	600	336
10	700	321
11	1000	366
12	2000	413
13	3000	411
14	7000	400
15	10380	214

Assay Class: High Sensitivity DNA Assay
Data Path: C:\...ents and Settings\Bioanalyzer\2012-06-12\2012-06-12_001.xad

Created: 6/12/2012 9:13:53 AM
Modified: 6/12/2012 9:46:38 AM

Electropherogram Summary



Overall Results for Ladder

Noise: 0.2

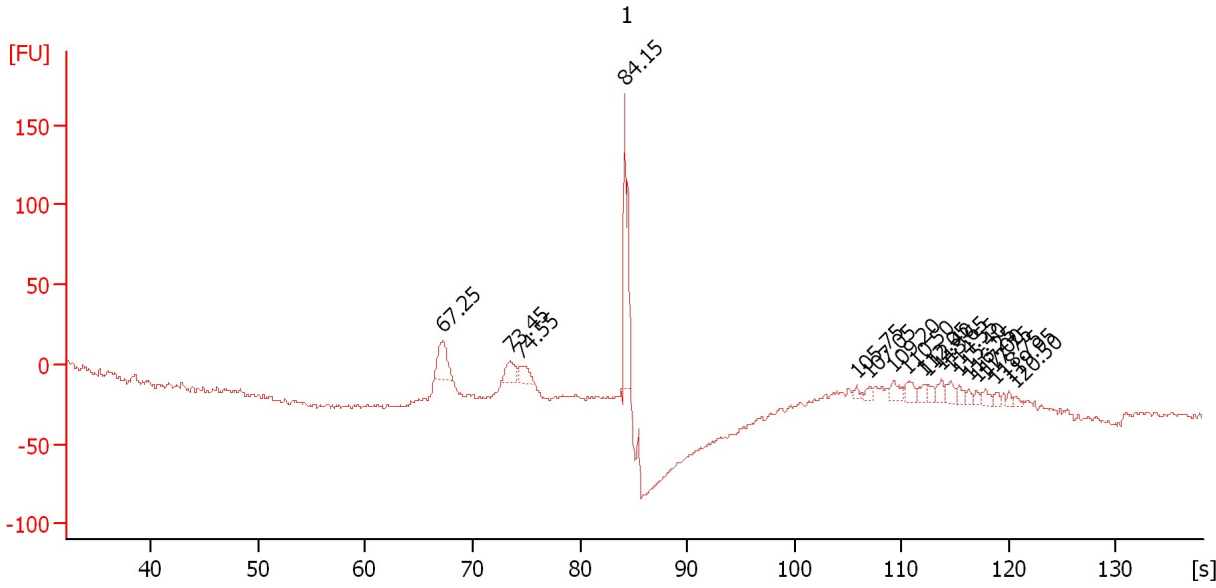
Peak table for Ladder

Peak	Size [bp]	Conc. [pg/μl]	Molarity [pmol/l]	Observations
1	0	0.00	0.0	Lower Marker
2	0	0.00	0.0	Ladder Peak

Assay Class: High Sensitivity DNA Assay
 Data Path: C:\...ents and Settings\Bioanalyzer\2012-06-12\2012-06-12_001.xad

Created: 6/12/2012 9:13:53 AM
 Modified: 6/12/2012 9:46:38 AM

Electropherogram Summary Continued ...



Overall Results for sample 1 : 1

Number of peaks found: 0 Noise: 1.3

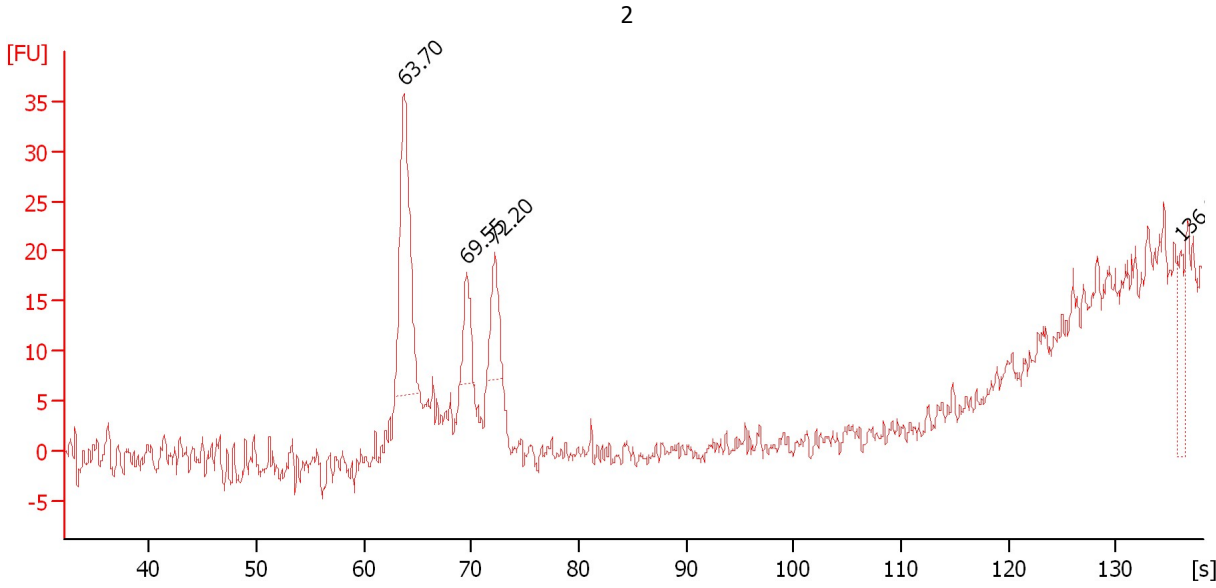
Peak table for sample 1 : 1

Peak	Size [bp]	Conc. [pg/μl]	Molarity [pmol/l]	Observations
1	0	0.00	0.0	
2	0	0.00	0.0	
3	0	0.00	0.0	
4	0	0.00	0.0	
5	0	0.00	0.0	
6	0	0.00	0.0	
7	0	0.00	0.0	
8	0	0.00	0.0	
9	0	0.00	0.0	
10	0	0.00	0.0	
11	0	0.00	0.0	
12	0	0.00	0.0	
13	0	0.00	0.0	
14	0	0.00	0.0	
15	0	0.00	0.0	
16	0	0.00	0.0	
17	0	0.00	0.0	
18	0	0.00	0.0	
19	0	0.00	0.0	

Assay Class: High Sensitivity DNA Assay
Data Path: C:\...ents and Settings\Bioanalyzer\2012-06-12\2012-06-12_001.xad

Created: 6/12/2012 9:13:53 AM
Modified: 6/12/2012 9:46:38 AM

Electropherogram Summary Continued ...



Overall Results for sample 2 : 2

Number of peaks found: 0 Noise: 1.3

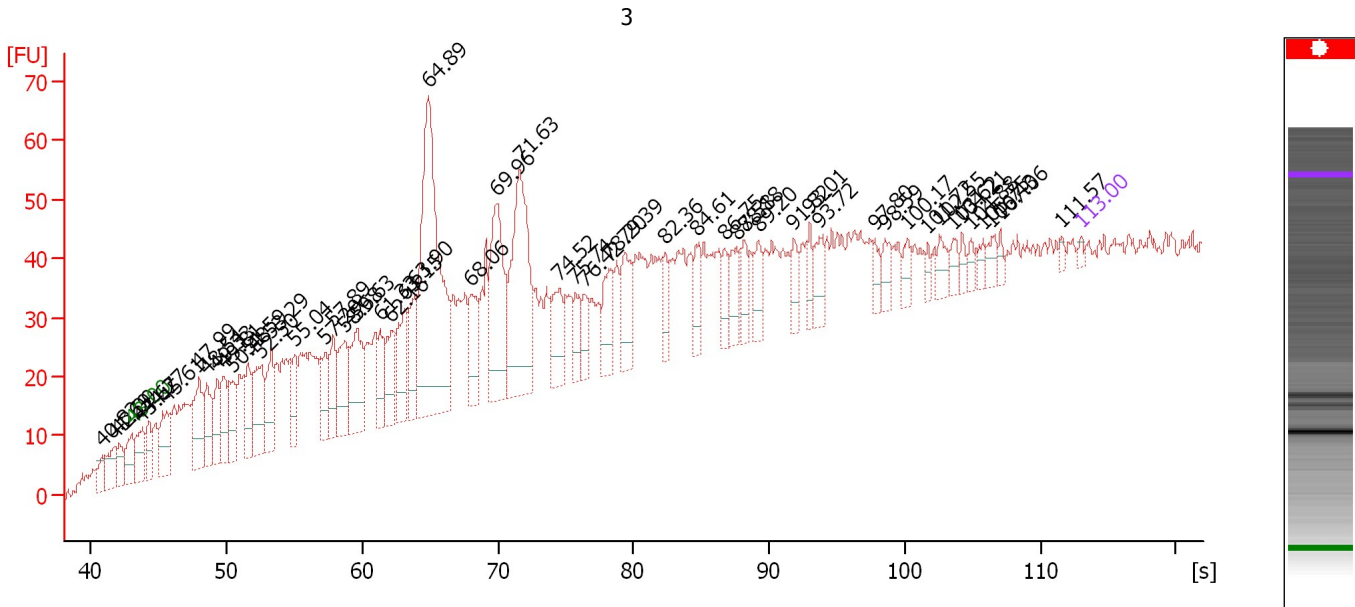
Peak table for sample 2 : 2

Peak	Size [bp]	Conc. [pg/μl]	Molarity [pmol/l]	Observations
1	0	0.00	0.0	
2	0	0.00	0.0	
3	0	0.00	0.0	
4	0	0.00	0.0	

Assay Class: High Sensitivity DNA Assay
 Data Path: C:\...ents and Settings\Bioanalyzer\2012-06-12\2012-06-12_001.xad

Created: 6/12/2012 9:13:53 AM
 Modified: 6/12/2012 9:46:38 AM

Electropherogram Summary Continued ...



Overall Results for sample 3 : 3

Number of peaks found: 53 Noise: 1.2

Peak table for sample 3 : 3

Peak	Size [bp]	Conc. [pg/μl]	Molarity [pmol/l]	Observations
1	0	0.00	0.0	
2	0	0.00	0.0	
3	0	0.00	0.0	
4	0	0.00	0.0	Lower Marker
5	0	0.00	0.0	
6	0	0.00	0.0	
7	0	0.00	0.0	
8	0	0.00	0.0	
9	0	0.00	0.0	
10	0	0.00	0.0	
11	0	0.00	0.0	
12	0	0.00	0.0	
13	0	0.00	0.0	
14	0	0.00	0.0	
15	0	0.00	0.0	
16	0	0.00	0.0	
17	0	0.00	0.0	
18	0	0.00	0.0	
19	0	0.00	0.0	
20	0	0.00	0.0	
21	0	0.00	0.0	
22	0	0.00	0.0	
23	0	0.00	0.0	
24	0	0.00	0.0	
25	0	0.00	0.0	
26	0	0.00	0.0	
27	0	0.00	0.0	

Assay Class: High Sensitivity DNA Assay
Data Path: C:\...ents and Settings\Bioanalyzer\2012-06-12\2012-06-12_001.xad

Created: 6/12/2012 9:13:53 AM
Modified: 6/12/2012 9:46:38 AM

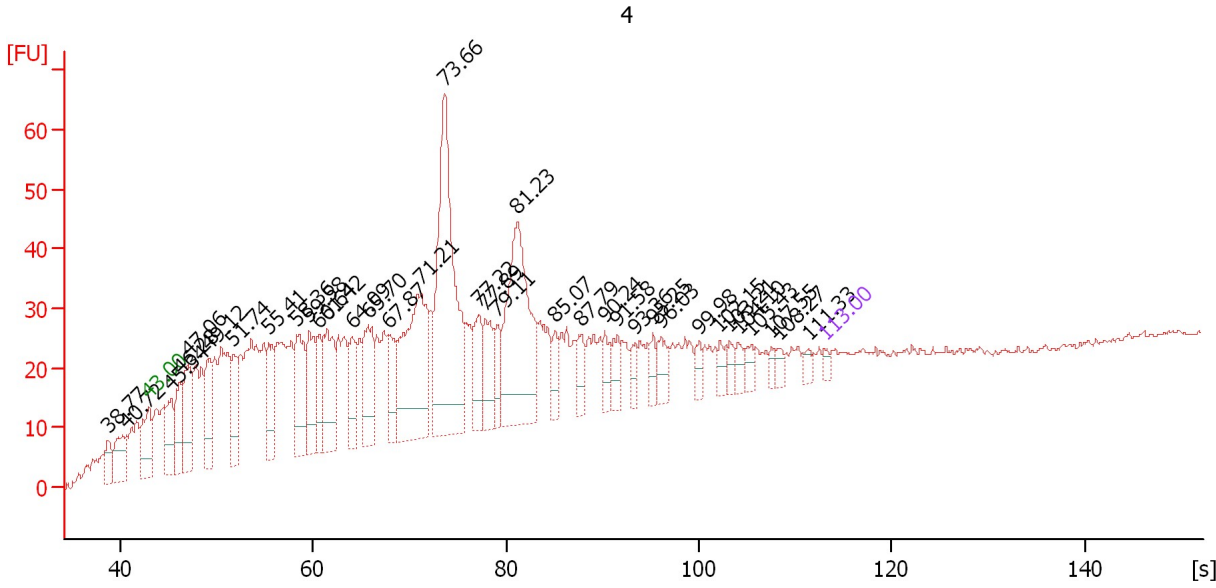
Electropherogram Summary Continued ...**... Peak table for sample 3 : 3**

Peak	Size [bp]	Conc. [pg/μl]	Molarity [pmol/l]	Observations
28	0	0.00	0.0	
29	0	0.00	0.0	
30	0	0.00	0.0	
31	0	0.00	0.0	
32	0	0.00	0.0	
33	0	0.00	0.0	
34	0	0.00	0.0	
35	0	0.00	0.0	
36	0	0.00	0.0	
37	0	0.00	0.0	
38	0	0.00	0.0	
39	0	0.00	0.0	
40	0	0.00	0.0	
41	0	0.00	0.0	
42	0	0.00	0.0	
43	0	0.00	0.0	
44	0	0.00	0.0	
45	0	0.00	0.0	
46	0	0.00	0.0	
47	0	0.00	0.0	
48	0	0.00	0.0	
49	0	0.00	0.0	
50	0	0.00	0.0	
51	0	0.00	0.0	
52	0	0.00	0.0	
53	0	0.00	0.0	
54	0	0.00	0.0	
55	0	0.00	0.0	Upper Marker

Assay Class: High Sensitivity DNA Assay
 Data Path: C:\...ents and Settings\Bioanalyzer\2012-06-12\2012-06-12_001.xad

Created: 6/12/2012 9:13:53 AM
 Modified: 6/12/2012 9:46:38 AM

Electropherogram Summary Continued ...



Overall Results for sample 4 : 4

Number of peaks found: 36 Noise: 0.4

Peak table for sample 4 : 4

Peak	Size [bp]	Conc. [pg/μl]	Molarity [pmol/l]	Observations
1	0	0.00	0.0	
2	0	0.00	0.0	
3	0	0.00	0.0	Lower Marker
4	0	0.00	0.0	
5	0	0.00	0.0	
6	0	0.00	0.0	
7	0	0.00	0.0	
8	0	0.00	0.0	
9	0	0.00	0.0	
10	0	0.00	0.0	
11	0	0.00	0.0	
12	0	0.00	0.0	
13	0	0.00	0.0	
14	0	0.00	0.0	
15	0	0.00	0.0	
16	0	0.00	0.0	
17	0	0.00	0.0	
18	0	0.00	0.0	
19	0	0.00	0.0	
20	0	0.00	0.0	
21	0	0.00	0.0	
22	0	0.00	0.0	
23	0	0.00	0.0	
24	0	0.00	0.0	
25	0	0.00	0.0	
26	0	0.00	0.0	
27	0	0.00	0.0	

Assay Class: High Sensitivity DNA Assay
Data Path: C:\...ents and Settings\Bioanalyzer\2012-06-12\2012-06-12_001.xad

Created: 6/12/2012 9:13:53 AM
Modified: 6/12/2012 9:46:38 AM

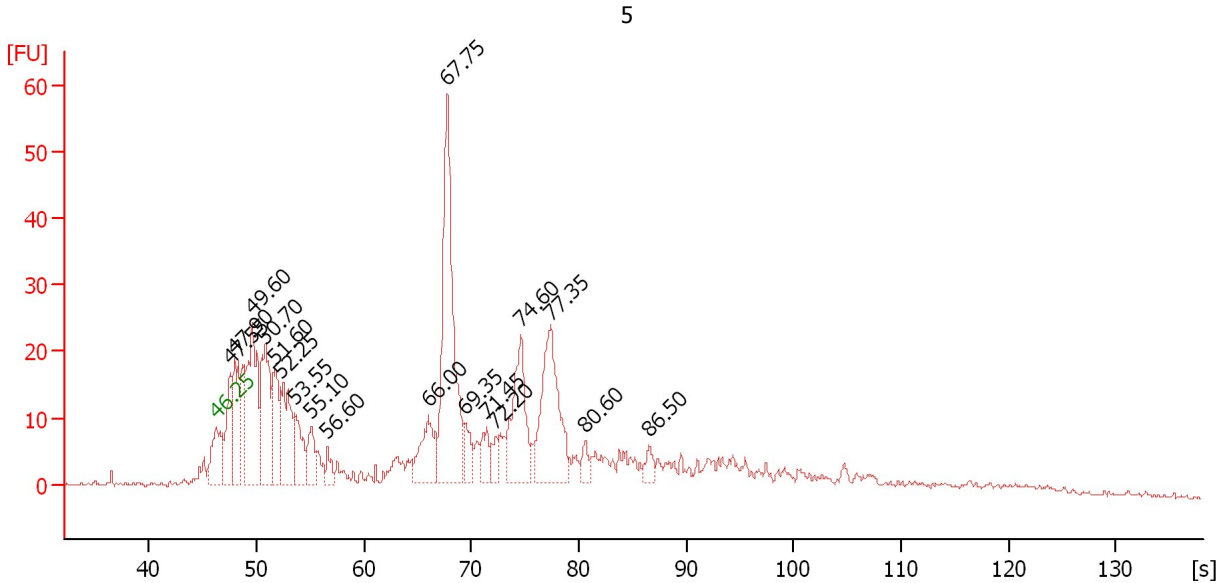
Electropherogram Summary Continued ...**... Peak table for sample 4 : 4**

Peak	Size [bp]	Conc. [pg/μl]	Molarity [pmol/l]	Observations
28	0	0.00	0.0	
29	0	0.00	0.0	
30	0	0.00	0.0	
31	0	0.00	0.0	
32	0	0.00	0.0	
33	0	0.00	0.0	
34	0	0.00	0.0	
35	0	0.00	0.0	
36	0	0.00	0.0	
37	0	0.00	0.0	
38	▶ 0	0.00	0.0	Upper Marker

Assay Class: High Sensitivity DNA Assay
 Data Path: C:\...ents and Settings\Bioanalyzer\2012-06-12\2012-06-12_001.xad

Created: 6/12/2012 9:13:53 AM
 Modified: 6/12/2012 9:46:38 AM

Electropherogram Summary Continued ...



Overall Results for sample 5 : 5

Number of peaks found: 18 Noise: 0.4

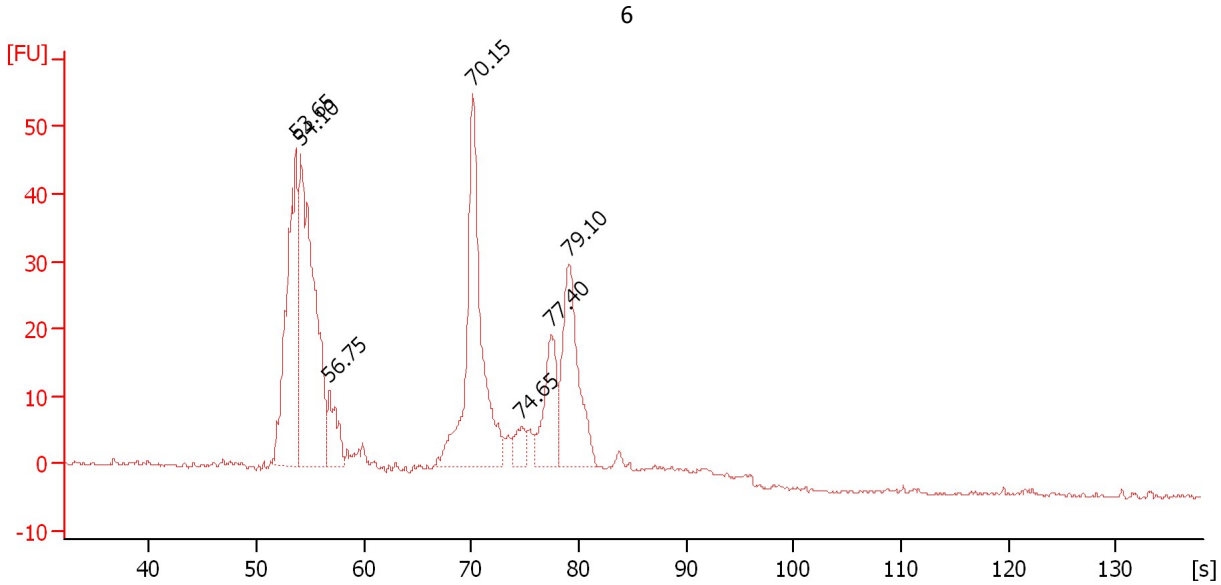
Peak table for sample 5 : 5

Peak	Size [bp]	Conc. [pg/μl]	Molarity [pmol/l]	Observations
1	0	0.00	0.0	Lower Marker
2	0	0.00	0.0	
3	0	0.00	0.0	
4	0	0.00	0.0	
5	0	0.00	0.0	
6	0	0.00	0.0	
7	0	0.00	0.0	
8	0	0.00	0.0	
9	0	0.00	0.0	
10	0	0.00	0.0	
11	0	0.00	0.0	
12	0	0.00	0.0	
13	0	0.00	0.0	
14	0	0.00	0.0	
15	0	0.00	0.0	
16	0	0.00	0.0	
17	0	0.00	0.0	
18	0	0.00	0.0	
19	0	0.00	0.0	

Assay Class: High Sensitivity DNA Assay
Data Path: C:\...ents and Settings\Bioanalyzer\2012-06-12\2012-06-12_001.xad

Created: 6/12/2012 9:13:53 AM
Modified: 6/12/2012 9:46:38 AM

Electropherogram Summary Continued ...



Overall Results for sample 6 : 6

Number of peaks found: 0 Noise: 0.3

Peak table for sample 6 : 6

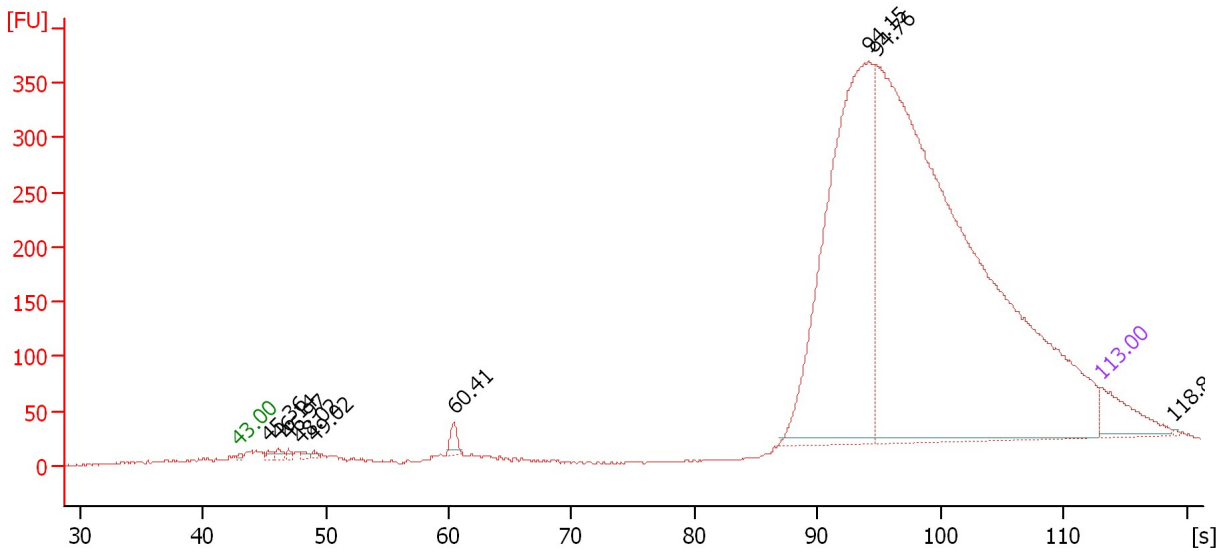
Peak	Size [bp]	Conc. [pg/μl]	Molarity [pmol/l]	Observations
1	0	0.00	0.0	
2	0	0.00	0.0	
3	0	0.00	0.0	
4	0	0.00	0.0	
5	0	0.00	0.0	
6	0	0.00	0.0	
7	0	0.00	0.0	

Assay Class: High Sensitivity DNA Assay
 Data Path: C:\...ents and Settings\Bioanalyzer\2012-06-12\2012-06-12_001.xad

Created: 6/12/2012 9:13:53 AM
 Modified: 6/12/2012 9:46:38 AM

Electropherogram Summary Continued ...

Yanina PR .010 Library Ind 13



Overall Results for sample 7 : Yanina PR .010 Library Ind 13

Number of peaks found: 9 Noise: 0.6

Peak table for sample 7 : Yanina PR .010 Library Ind 13

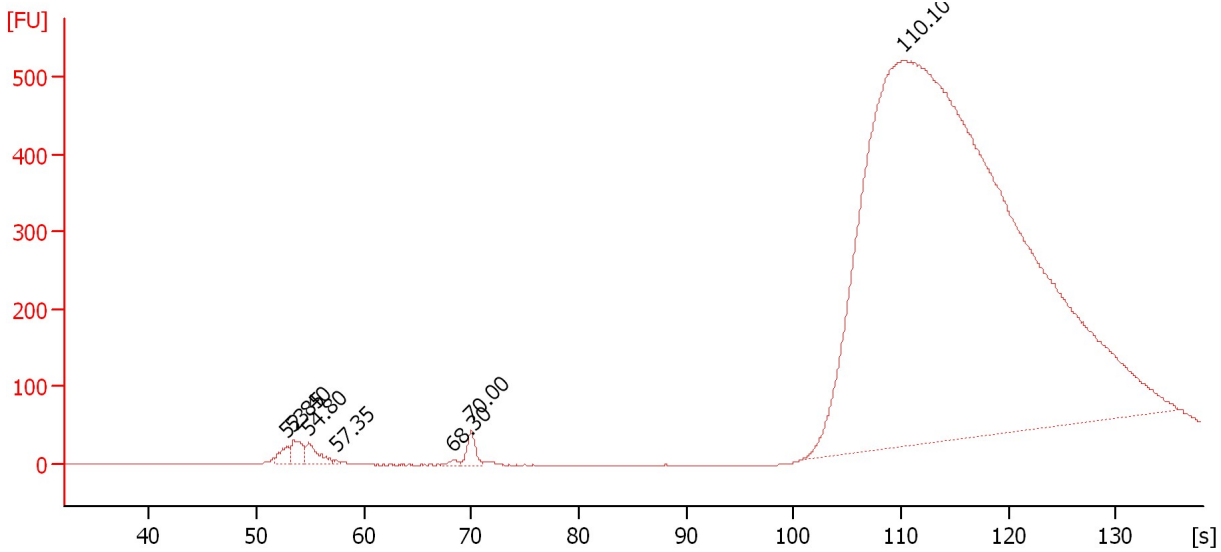
Peak	Size [bp]	Conc. [pg/μl]	Molarity [pmol/l]	Observations
1	0	0.00	0.0	Lower Marker
2	0	0.00	0.0	
3	0	0.00	0.0	
4	0	0.00	0.0	
5	0	0.00	0.0	
6	0	0.00	0.0	
7	0	0.00	0.0	
8	0	0.00	0.0	
9	0	0.00	0.0	
10	0	0.00	0.0	Upper Marker
11	0	0.00	0.0	

Assay Class: High Sensitivity DNA Assay
Data Path: C:\...ents and Settings\Bioanalyzer\2012-06-12\2012-06-12_001.xad

Created: 6/12/2012 9:13:53 AM
Modified: 6/12/2012 9:46:38 AM

Electropherogram Summary Continued ...

Yanina PR .024 Library Ind 14



Overall Results for sample 8 : Yanina PR .024 Library Ind 14

Number of peaks found: 0 Noise: 0.3

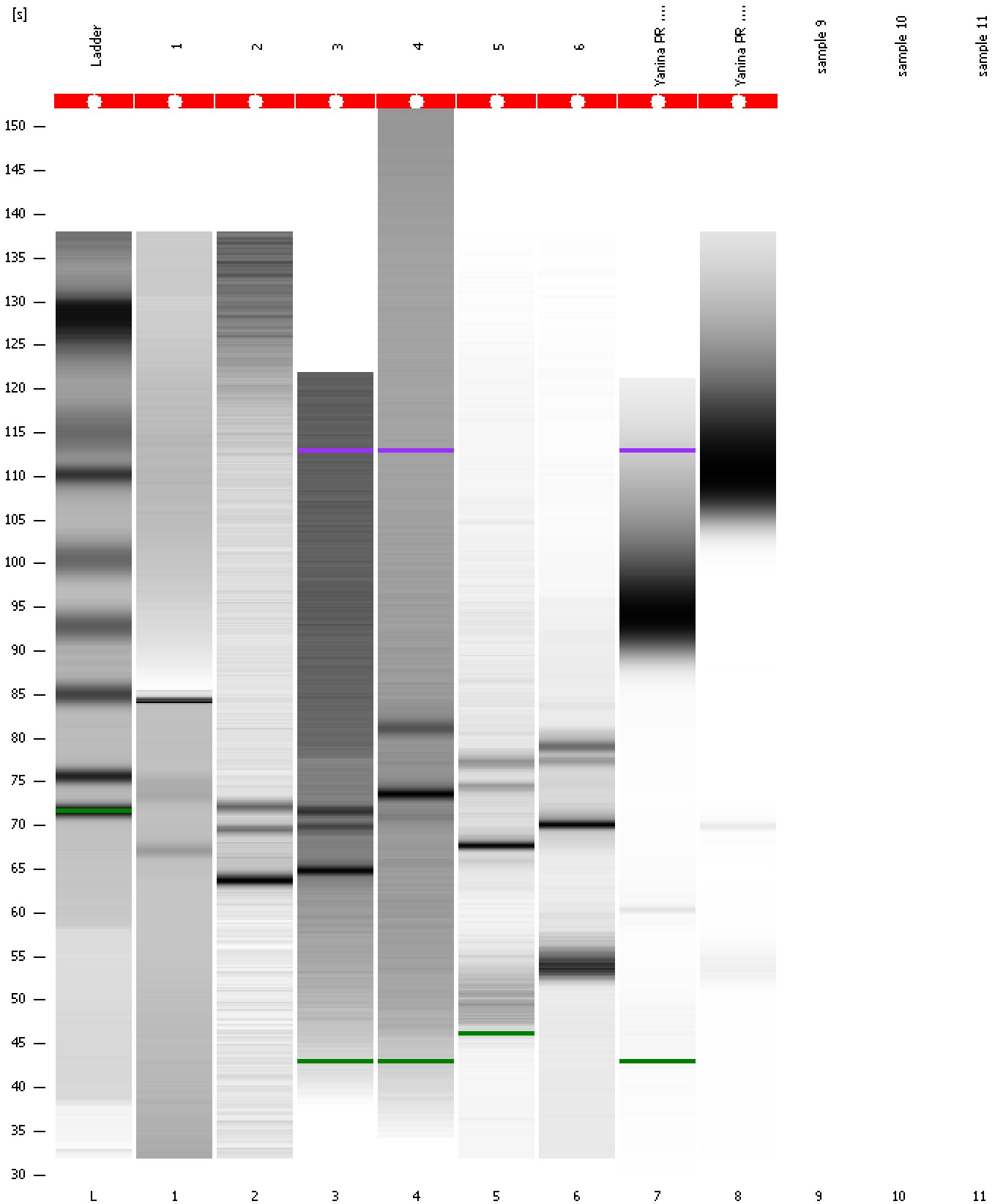
Peak table for sample 8 : Yanina PR .024 Library Ind 14

Peak	Size [bp]	Conc. [pg/μl]	Molarity [pmol/l]	Observations
1	0	0.00	0.0	
2	0	0.00	0.0	
3	0	0.00	0.0	
4	0	0.00	0.0	
5	0	0.00	0.0	
6	0	0.00	0.0	
7	0	0.00	0.0	

Assay Class: High Sensitivity DNA Assay
Data Path: C:\...ents and Settings\Bioanalyzer\2012-06-12\2012-06-12_001.xad

Created: 6/12/2012 9:13:53 AM
Modified: 6/12/2012 9:46:38 AM

Gel Image



Assay Class: High Sensitivity DNA Assay
Data Path: C:\...ents and Settings\Bioanalyzer\2012-06-12\2012-06-12_001.xad

Created: 6/12/2012 9:13:53 AM
Modified: 6/12/2012 9:46:38 AM

Invalid Samples

Sample 9 has not been run, no results available.

Sample 10 has not been run, no results available.

Sample 11 has not been run, no results available.

Assay Class: High Sensitivity DNA Assay
 Data Path: C:\...ents and Settings\Bioanalyzer\2012-06-12\2012-06-12_001.xad

Created: 6/12/2012 9:13:53 AM
 Modified: 6/12/2012 9:46:38 AM

Run Logbook

Description	Number	Source	Category	Sub Category	Time	Time Zone	User	Host
Run ended on port 1 (Number of wells acquired: 9)		Instrument	Run		6/12/2012 9:46:36 AM	(GMT --07:00) Pacific Standard Time	UC Davis	D8XSMGH1
Run started on port 1 (File: C:\Documents and Settings\Bioanalyzer\2012-06-12\2012-06-12_001.xad)		Instrument	Run		6/12/2012 9:13:59 AM	(GMT --07:00) Pacific Standard Time	UC Davis	D8XSMGH1
Product Number : G2938B		Instrument	Run		6/12/2012 9:13:59 AM	(GMT --07:00) Pacific Standard Time	UC Davis	D8XSMGH1
Name :		Instrument	Run		6/12/2012 9:13:59 AM	(GMT --07:00) Pacific Standard Time	UC Davis	D8XSMGH1
Vendor : Agilent Technologies		Instrument	Run		6/12/2012 9:13:59 AM	(GMT --07:00) Pacific Standard Time	UC Davis	D8XSMGH1
Serial# : DE13701086		Instrument	Run		6/12/2012 9:13:59 AM	(GMT --07:00) Pacific Standard Time	UC Davis	D8XSMGH1
Firmware : C.01.069		Instrument	Run		6/12/2012 9:13:59 AM	(GMT --07:00) Pacific Standard Time	UC Davis	D8XSMGH1
Cartridge : Electrode		Instrument	Run		6/12/2012 9:13:59 AM	(GMT --07:00) Pacific Standard Time	UC Davis	D8XSMGH1