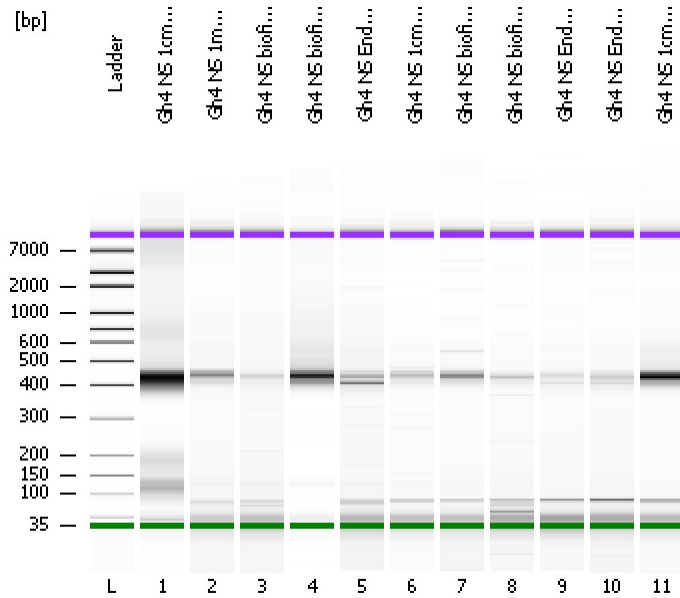


Assay Class: High Sensitivity DNA Assay
Data Path: C:\...ents and Settings\Bioanalyzer\2012-06-12\2012-06-12_004.xad

Created: 6/12/2012 3:04:31 PM
Modified: 6/12/2012 3:45:54 PM

Electrophoresis File Run Summary



Instrument Information:

Instrument Name: DE13701086 Firmware: C.01.069
Serial#: DE13701086 Type: G2938B

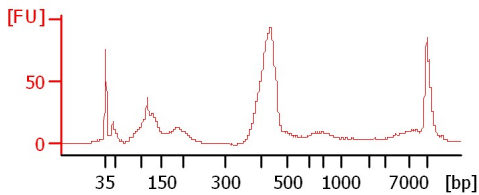
Assay Information:

Assay Origin Path: C:\Program Files\Agilent\2100 bioanalyzer\2100 expert\assays\dsDNA\High Sensitivity DNA.xsy
Assay Class: High Sensitivity DNA Assay
Version: 1.03
Assay Comments: Copyright © 2003-2010 Agilent Technologies

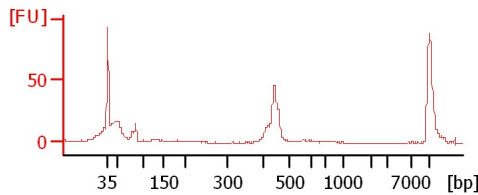
Chip Information:

Chip Lot #:
Reagent Kit Lot #:
Chip Comments:

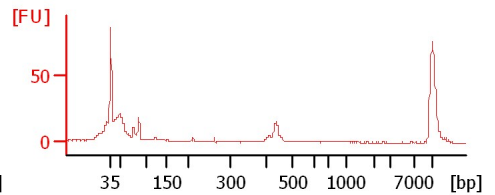
Gh4 NS 1cm pl1



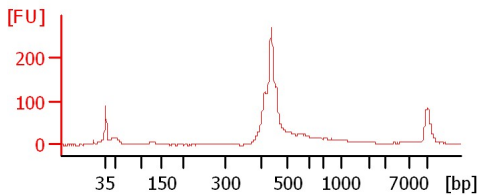
Gh4 NS 1mm pl1



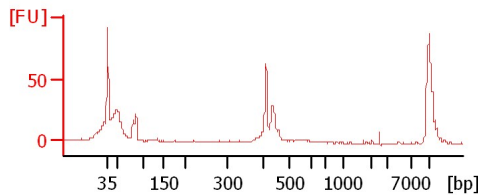
Gh4 NS biofilm-1 pl5



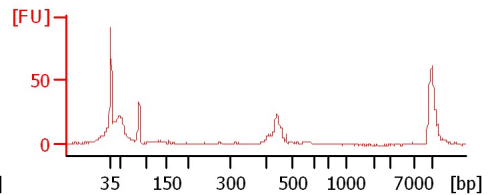
Gh4 NS biofilm-2 pl5



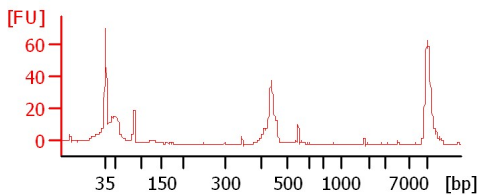
Gh4 NS Endo-2 pl5



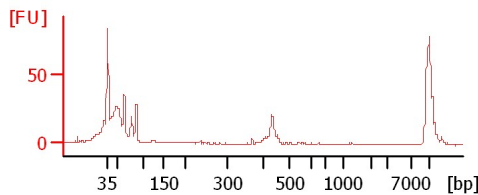
Gh4 NS 1cm pl3



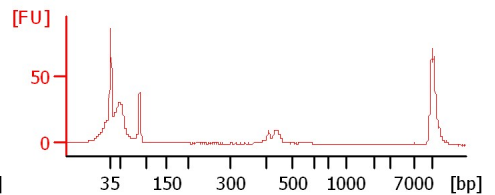
Gh4 NS biofilm-1 pl7



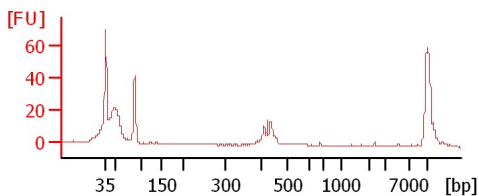
Gh4 NS biofilm-2 pl7



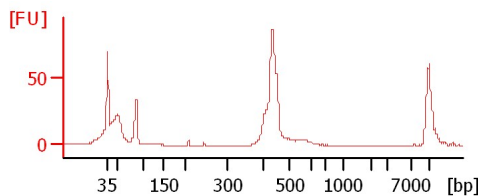
Gh4 NS Endo-1 pl7



Gh4 NS Endo-2 pl7



Gh4 NS 1cm pl 9



Assay Class: High Sensitivity DNA Assay
Data Path: C:\...ents and Settings\Bioanalyzer\2012-06-12\2012-06-12_004.xad

Created: 6/12/2012 3:04:31 PM
Modified: 6/12/2012 3:45:54 PM

Electrophoresis File Run Summary (Chip Summary)

Sample Name	Sample Comment	Rest. Digest	Status	Observation	Result Label	Result Color
Gh4 NS 1cm pl1		<input type="checkbox"/>	✓			
Gh4 NS 1mm pl1		<input type="checkbox"/>	✓			
Gh4 NS biofilm-1 pl5		<input type="checkbox"/>	✓			
Gh4 NS biofilm-2 pl5		<input type="checkbox"/>	✓			
Gh4 NS Endo-2 pl5		<input type="checkbox"/>	✓			
Gh4 NS 1cm pl3		<input type="checkbox"/>	✓			
Gh4 NS biofilm-1 pl7		<input type="checkbox"/>	✓			
Gh4 NS biofilm-2 pl7		<input type="checkbox"/>	✓			
Gh4 NS Endo-1 pl7		<input type="checkbox"/>	✓			
Gh4 NS Endo-2 pl7		<input type="checkbox"/>	✓			
Gh4 NS 1cm pl 9		<input type="checkbox"/>	✓			
Ladder		<input type="checkbox"/>	✓			

Chip Lot #

Reagent Kit Lot #

Chip Comments :

Assay Class: High Sensitivity DNA Assay
Data Path: C:\...ents and Settings\Bioanalyzer\2012-06-12\2012-06-12_004.xad

Created: 6/12/2012 3:04:31 PM
Modified: 6/12/2012 3:45:54 PM

Electrophoresis Assay Details

General Analysis Settings

Number of Available Sample and Ladder Wells (Max.) : 12
Minimum Visible Range [s] : 32
Maximum Visible Range [s] : 138
Start Analysis Time Range [s] : 33
End Analysis Time Range [s] : 137.5
Ladder Concentration [pg/μl] : 1950
Uses Standard Area for Ladder Fragments
Lower Marker Concentration [pg/μl] : 125
Upper Marker Concentration [pg/μl] : 75
Used Upper Marker for Quantitation
Standard Curve Fit is Point to Point
Show Data Aligned to Lower and Upper Marker

Integrator Settings

Integration Start Time [s] : 33.05
Integration End Time [s] : 137
Slope Threshold : 0.8
Height Threshold [FU] : 10
Area Threshold : 0.1
Width Threshold [s] : 0.6
Baseline Plateau [s] : 0.5

Filter Settings

Filter Width [s] : 0.5
Polynomial Order : 4

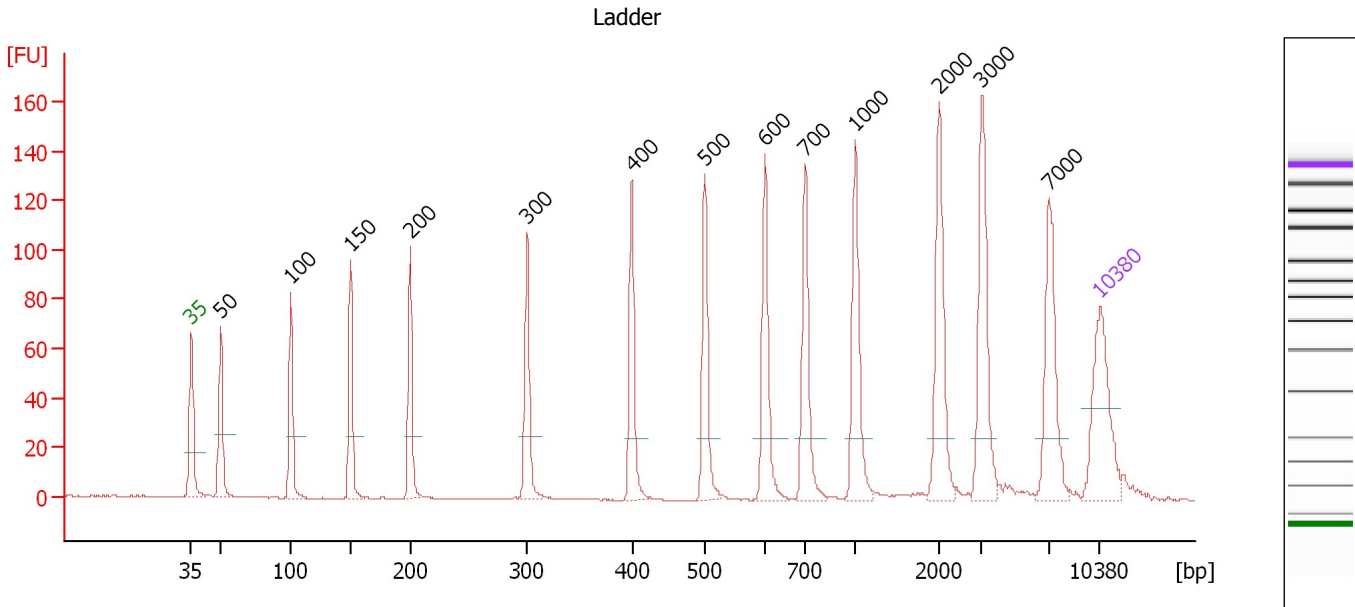
Ladder

Ladder Peak	Size	Area
1	35	160
2	50	210
3	100	208
4	150	221
5	200	242
6	300	270
7	400	305
8	500	306
9	600	336
10	700	321
11	1000	366
12	2000	413
13	3000	411
14	7000	400
15	10380	214

Assay Class: High Sensitivity DNA Assay
 Data Path: C:\...ents and Settings\Bioanalyzer\2012-06-12\2012-06-12_004.xad

Created: 6/12/2012 3:04:31 PM
 Modified: 6/12/2012 3:45:54 PM

Electropherogram Summary



Overall Results for Ladder

Noise: 0.1

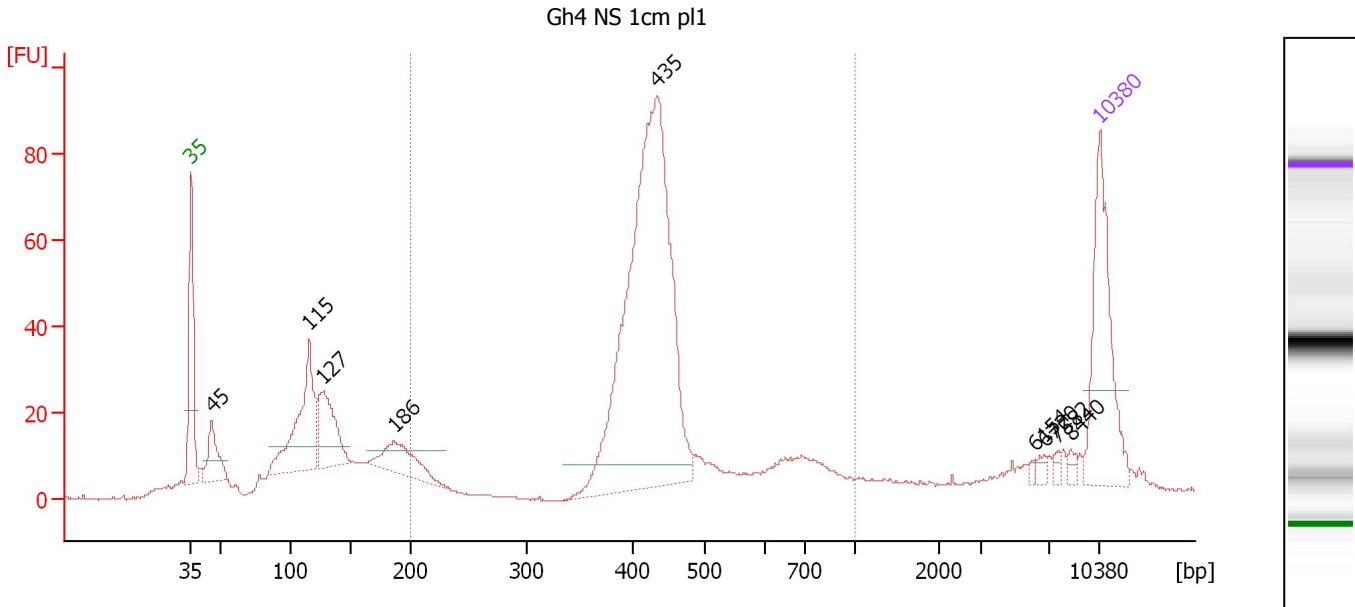
Peak table for Ladder

Peak	Size [bp]	Conc. [pg/μl]	Molarity [pmol/l]	Observations
1	35	125.00	5,411.3	Lower Marker
2	50	150.00	4,545.5	Ladder Peak
3	100	150.00	2,272.7	Ladder Peak
4	150	150.00	1,515.2	Ladder Peak
5	200	150.00	1,136.4	Ladder Peak
6	300	150.00	757.6	Ladder Peak
7	400	150.00	568.2	Ladder Peak
8	500	150.00	454.5	Ladder Peak
9	600	150.00	378.8	Ladder Peak
10	700	150.00	324.7	Ladder Peak
11	1,000	150.00	227.3	Ladder Peak
12	2,000	150.00	113.6	Ladder Peak
13	3,000	150.00	75.8	Ladder Peak
14	7,000	150.00	32.5	Ladder Peak
15	10,380	75.00	10.9	Upper Marker

Assay Class: High Sensitivity DNA Assay
 Data Path: C:\...ents and Settings\Bioanalyzer\2012-06-12\2012-06-12_004.xad

Created: 6/12/2012 3:04:31 PM
 Modified: 6/12/2012 3:45:54 PM

Electropherogram Summary Continued ...



Setpoint Deviations for sample 1 : Gh4 NS 1cm pl1

Height Threshold [FU] : 5

Overall Results for sample 1 : Gh4 NS 1cm pl1

Number of peaks found: 9 Corr. Area 1: 611.9
 Noise: 0.2

Peak table for sample 1 : Gh4 NS 1cm pl1

Peak	Size [bp]	Conc. [pg/μl]	Molarity [pmol/l]	Observations
1	35	125.00	5,411.3	Lower Marker
2	45	42.61	1,423.7	
3	115	115.88	1,521.6	
4	127	70.83	847.3	
5	186	49.84	405.1	
6	435	435.87	1,519.2	
7	6,154	2.03	0.5	
8	6,720	3.78	0.9	
9	7,582	2.77	0.6	
10	8,440	3.45	0.6	
11	10,380	75.00	10.9	Upper Marker

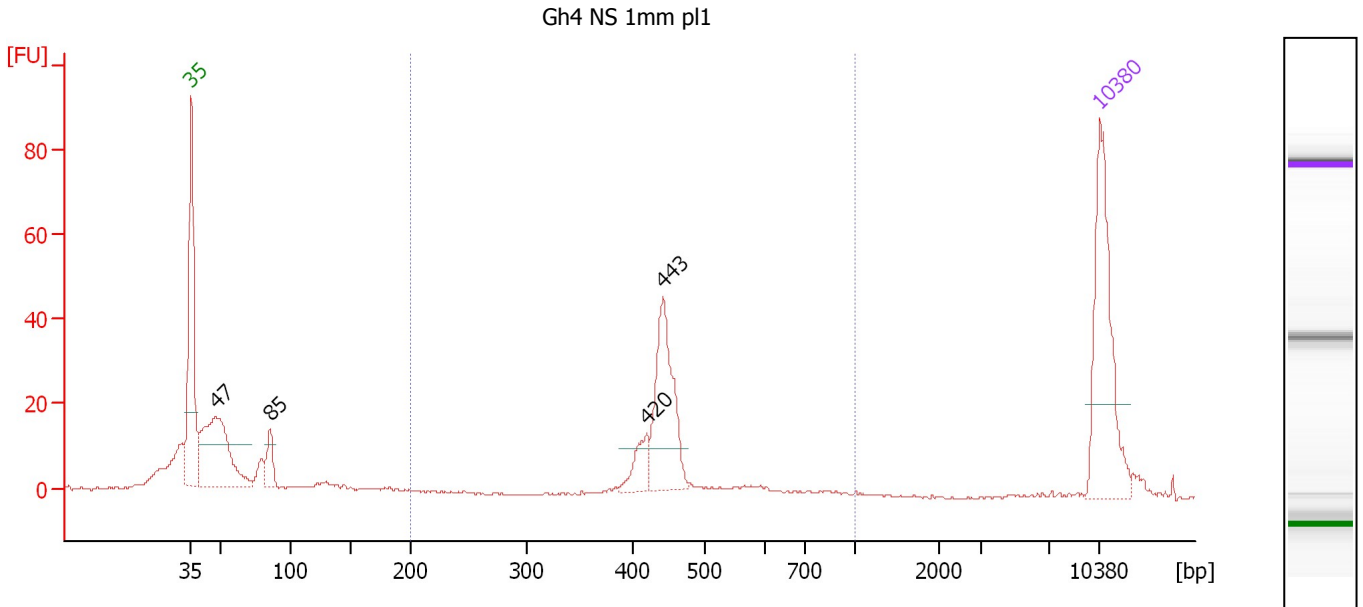
Region table for sample 1 : Gh4 NS 1cm pl1

From [bp]	To [bp]	Average Size [bp]	Molarity [pmol/l]	Conc. [pg/μl]	Corr. Area	% of Total	Size distribution in CV [%]	Color
200	1,000	453	2,110.2	576.99	611.9	56	25.5	Blue

Assay Class: High Sensitivity DNA Assay
 Data Path: C:\...ents and Settings\Bioanalyzer\2012-06-12\2012-06-12_004.xad

Created: 6/12/2012 3:04:31 PM
 Modified: 6/12/2012 3:45:54 PM

Electropherogram Summary Continued ...



Overall Results for sample 2 : Gh4 NS 1mm pl1

Number of peaks found: 4 Corr. Area 1: 140.1
 Noise: 0.2

Peak table for sample 2 : Gh4 NS 1mm pl1

Peak	Size [bp]	Conc. [pg/μl]	Molarity [pmol/l]	Observations
1	35	125.00	5,411.3	Lower Marker
2	47	128.60	4,115.5	
3	85	20.43	363.5	
4	420	21.03	75.8	
5	443	82.99	283.9	
6	10,380	75.00	10.9	Upper Marker

Region table for sample 2 : Gh4 NS 1mm pl1

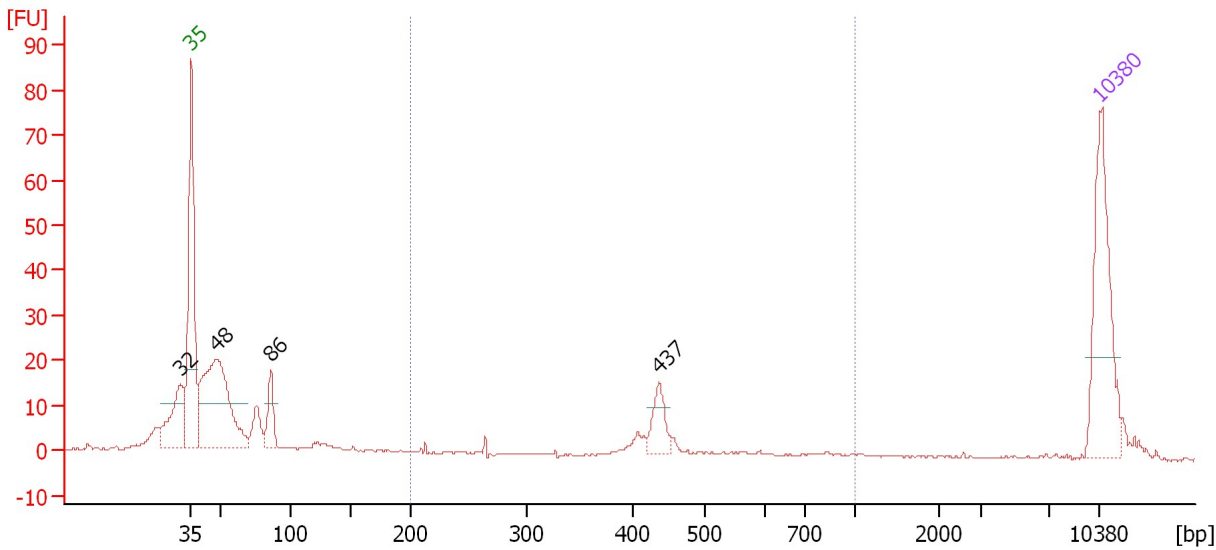
From [bp]	To [bp]	Average Size [bp]	Molarity [pmol/l]	Conc. [pg/μl]	Corr. Area	% of Total	Size distribution in CV [%]	Color
200	1,000	459	421.3	124.86	140.1	40	15.8	Blue

Assay Class: High Sensitivity DNA Assay
 Data Path: C:\...ents and Settings\Bioanalyzer\2012-06-12\2012-06-12_004.xad

Created: 6/12/2012 3:04:31 PM
 Modified: 6/12/2012 3:45:54 PM

Electropherogram Summary Continued ...

Gh4 NS biofilm-1 pl5



Overall Results for sample 3 : Gh4 NS biofilm-1 pl5

Number of peaks found: 4 Corr. Area 1: 40.1
 Noise: 0.2

Peak table for sample 3 : Gh4 NS biofilm-1 pl5

Peak	Size [bp]	Conc. [pg/μl]	Molarity [pmol/l]	Observations
1	32	0.00	0.0	
2	35	125.00	5,411.3	Lower Marker
3	48	186.67	5,914.8	
4	86	30.15	531.6	
5	437	24.63	85.4	
6	10,380	75.00	10.9	Upper Marker

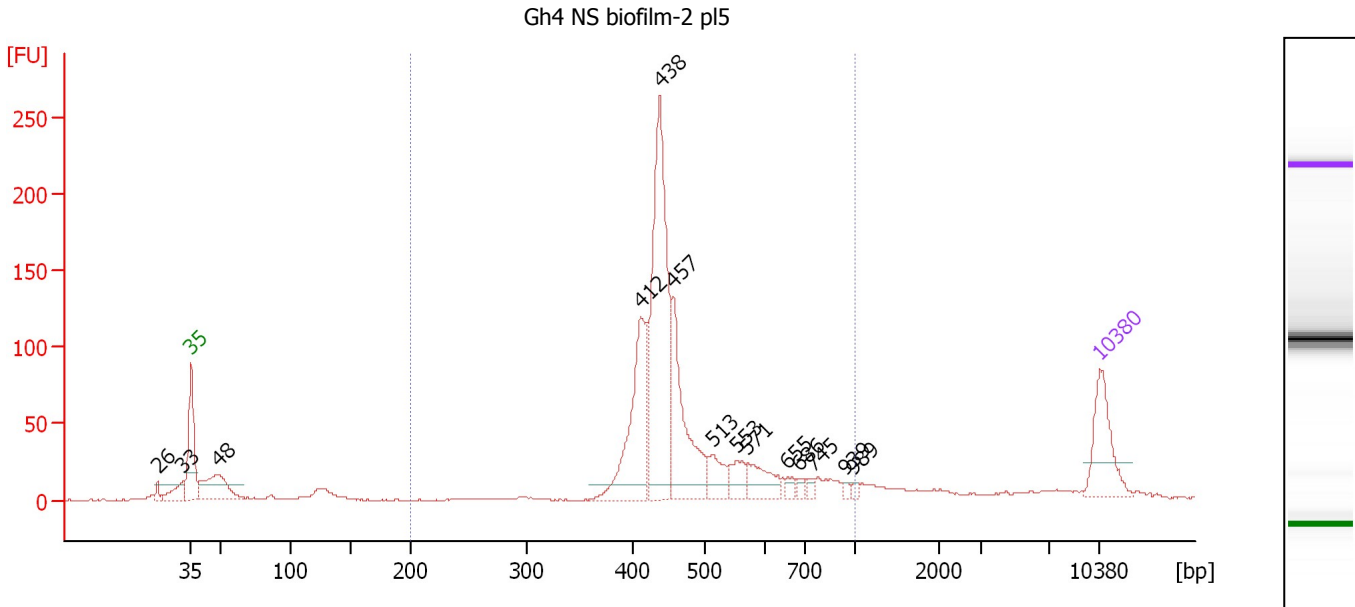
Region table for sample 3 : Gh4 NS biofilm-1 pl5

From [bp]	To [bp]	Average Size [bp]	Molarity [pmol/l]	Conc. [pg/μl]	Corr. Area	% of Total	Size distribution in CV [%]	Color
200	1,000	447	157.6	43.87	40.1	14	21.1	Blue

Assay Class: High Sensitivity DNA Assay
 Data Path: C:\...ents and Settings\Bioanalyzer\2012-06-12\2012-06-12_004.xad

Created: 6/12/2012 3:04:31 PM
 Modified: 6/12/2012 3:45:54 PM

Electropherogram Summary Continued ...



Overall Results for sample 4 : Gh4 NS biofilm-2 pl5

Number of peaks found: 14 Corr. Area 1: 1,088.4
 Noise: 0.3

Peak table for sample 4 : Gh4 NS biofilm-2 pl5

Peak	Size [bp]	Conc. [pg/μl]	Molarity [pmol/l]	Observations
1	26	0.00	0.0	
2	33	0.00	0.0	
3	35	125.00	5,411.3	Lower Marker
4	48	116.98	3,664.8	
5	412	216.73	796.2	
6	438	398.96	1,378.7	
7	457	187.03	619.9	
8	513	45.78	135.2	
9	553	33.19	90.9	
10	571	52.06	138.1	
11	655	11.19	25.9	
12	686	8.41	18.6	
13	745	8.22	16.7	
14	939	5.71	9.2	
15	989	5.31	8.1	
16	10,380	75.00	10.9	Upper Marker

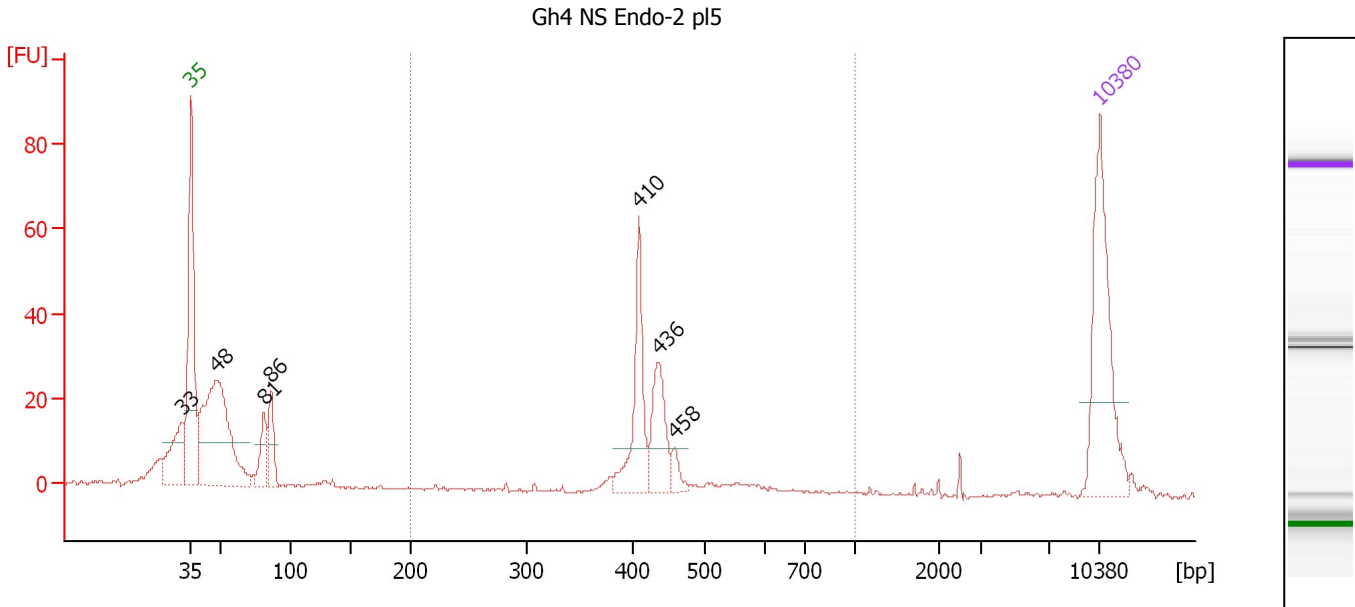
Region table for sample 4 : Gh4 NS biofilm-2 pl5

From [bp]	To [bp]	Average Size [bp]	Molarity [pmol/l]	Conc. [pg/μl]	Corr. Area	% of Total	Size distribution in CV [%]	Color
200	1,000	481	3,243.9	988.52	1,088.4	81	21.7	Blue

Assay Class: High Sensitivity DNA Assay
 Data Path: C:\...ents and Settings\Bioanalyzer\2012-06-12\2012-06-12_004.xad

Created: 6/12/2012 3:04:31 PM
 Modified: 6/12/2012 3:45:54 PM

Electropherogram Summary Continued ...



Overall Results for sample 5 : Gh4 NS Endo-2 pl5

Number of peaks found: 7 Corr. Area 1: 131.7
 Noise: 0.3

Peak table for sample 5 : Gh4 NS Endo-2 pl5

Peak	Size [bp]	Conc. [pg/μl]	Molarity [pmol/l]	Observations
1	33	0.00	0.0	
2	35	125.00	5,411.3	Lower Marker
3	48	191.65	6,063.4	
4	81	28.93	542.5	
5	86	31.61	557.5	
6	410	61.50	227.3	
7	436	43.19	150.0	
8	458	9.30	30.7	
9	10,380	75.00	10.9	Upper Marker

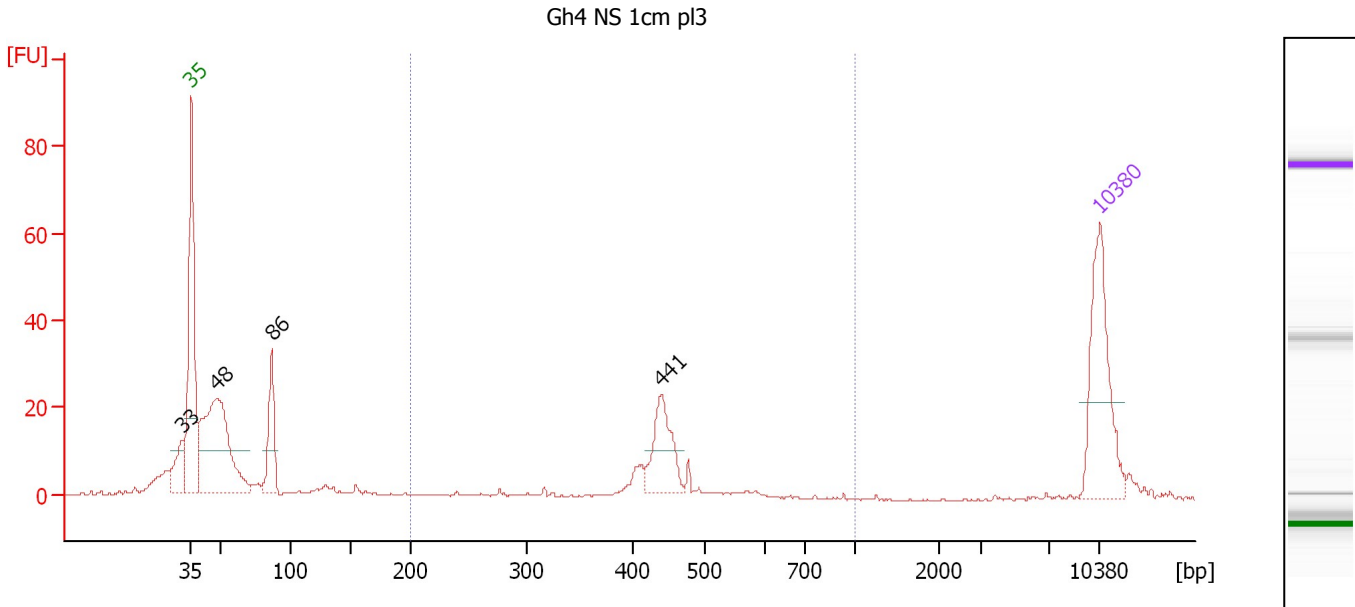
Region table for sample 5 : Gh4 NS Endo-2 pl5

From [bp]	To [bp]	Average Size [bp]	Molarity [pmol/l]	Conc. [pg/μl]	Corr. Area	% of Total	Size distribution in CV [%]	Color
200	1,000	432	432.3	121.97	131.7	34	10.0	Blue

Assay Class: High Sensitivity DNA Assay
 Data Path: C:\...ents and Settings\Bioanalyzer\2012-06-12\2012-06-12_004.xad

Created: 6/12/2012 3:04:31 PM
 Modified: 6/12/2012 3:45:54 PM

Electropherogram Summary Continued ...



Overall Results for sample 6 : Gh4 NS 1cm pl3

Number of peaks found: 4 Corr. Area 1: 83.1
 Noise: 0.2

Peak table for sample 6 : Gh4 NS 1cm pl3

Peak	Size [bp]	Conc. [pg/μl]	Molarity [pmol/l]	Observations
1	33	0.00	0.0	
2	35	125.00	5,411.3	Lower Marker
3	48	214.08	6,762.2	
4	86	60.68	1,065.9	
5	441	56.57	194.4	
6	10,380	75.00	10.9	Upper Marker

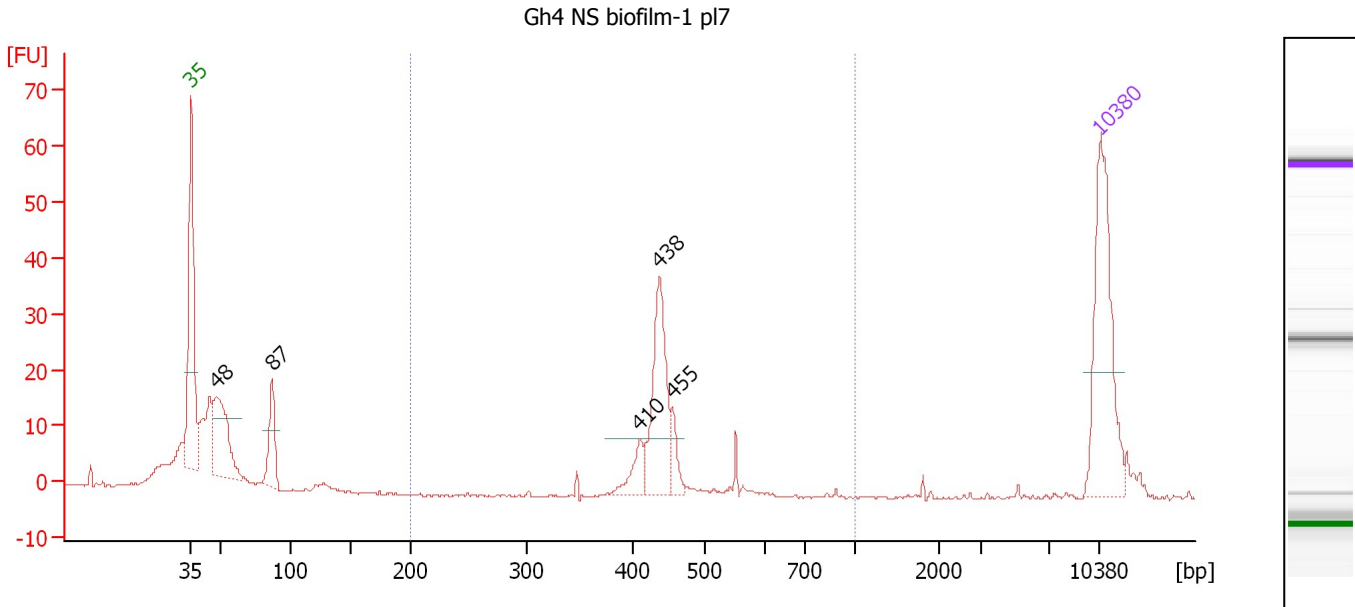
Region table for sample 6 : Gh4 NS 1cm pl3

From [bp]	To [bp]	Average Size [bp]	Molarity [pmol/l]	Conc. [pg/μl]	Corr. Area	% of Total	Size distribution in CV [%]	Color
200	1,000	437	352.2	97.55	83.1	25	14.9	Blue

Assay Class: High Sensitivity DNA Assay
 Data Path: C:\...ents and Settings\Bioanalyzer\2012-06-12\2012-06-12_004.xad

Created: 6/12/2012 3:04:31 PM
 Modified: 6/12/2012 3:45:54 PM

Electropherogram Summary Continued ...



Overall Results for sample 7 : Gh4 NS biofilm-1 pl7

Number of peaks found: 5 Corr. Area 1: 87.0
 Noise: 0.2

Peak table for sample 7 : Gh4 NS biofilm-1 pl7

Peak	Size [bp]	Conc. [pg/μl]	Molarity [pmol/l]	Observations
1	35	125.00	5,411.3	Lower Marker
2	48	77.13	2,443.5	
3	87	37.03	647.9	
4	410	17.57	64.9	
5	438	71.63	247.9	
6	455	12.67	42.2	
7	10,380	75.00	10.9	Upper Marker

Region table for sample 7 : Gh4 NS biofilm-1 pl7

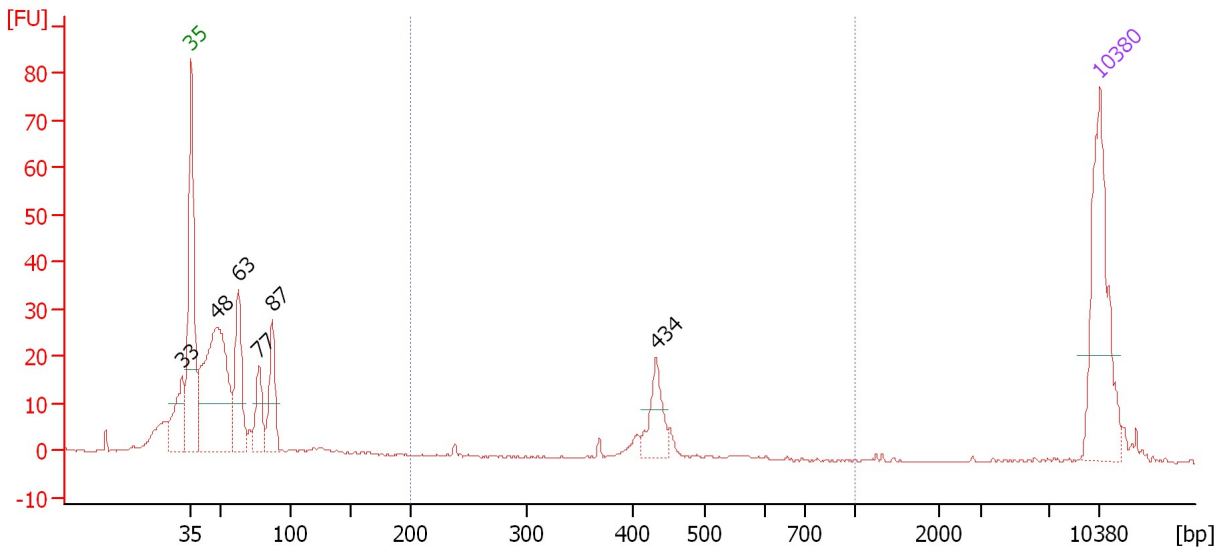
From [bp]	To [bp]	Average Size [bp]	Molarity [pmol/l]	Conc. [pg/μl]	Corr. Area	% of Total	Size distribution in CV [%]	Color
200	1,000	442	362.1	105.04	87.0	35	8.5	Blue

Assay Class: High Sensitivity DNA Assay
 Data Path: C:\...ents and Settings\Bioanalyzer\2012-06-12\2012-06-12_004.xad

Created: 6/12/2012 3:04:31 PM
 Modified: 6/12/2012 3:45:54 PM

Electropherogram Summary Continued ...

Gh4 NS biofilm-2 pl7



Overall Results for sample 8 : Gh4 NS biofilm-2 pl7

Number of peaks found: 6 Corr. Area 1: 40.2
 Noise: 0.1

Peak table for sample 8 : Gh4 NS biofilm-2 pl7

Peak	Size [bp]	Conc. [pg/μl]	Molarity [pmol/l]	Observations
1	33	0.00	0.0	
2	35	125.00	5,411.3	Lower Marker
3	48	198.31	6,282.1	
4	63	71.56	1,730.6	
5	77	36.04	705.0	
6	87	47.26	822.7	
7	434	31.48	110.0	
8	10,380	75.00	10.9	Upper Marker

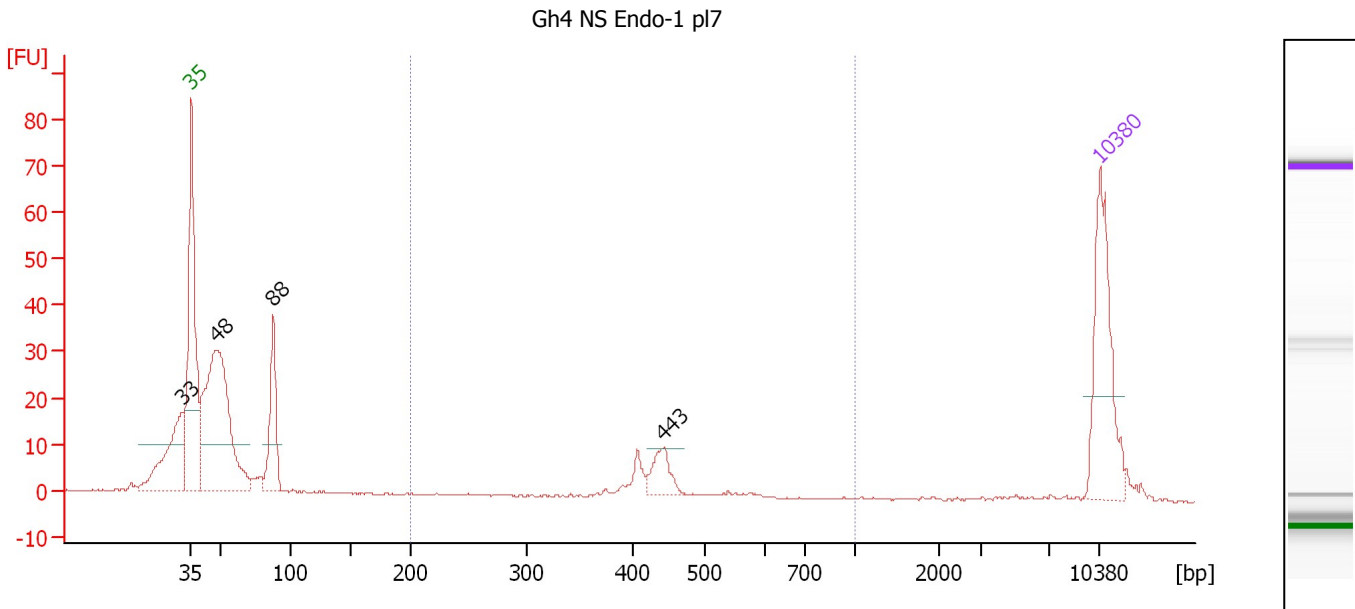
Region table for sample 8 : Gh4 NS biofilm-2 pl7

From [bp]	To [bp]	Average Size [bp]	Molarity [pmol/l]	Conc. [pg/μl]	Corr. Area	% of Total	Size distribution in CV [%]	Color
200	1,000	427	153.3	42.61	40.2	12	7.8	Blue

Assay Class: High Sensitivity DNA Assay
 Data Path: C:\...ents and Settings\Bioanalyzer\2012-06-12\2012-06-12_004.xad

Created: 6/12/2012 3:04:31 PM
 Modified: 6/12/2012 3:45:54 PM

Electropherogram Summary Continued ...



Overall Results for sample 9 : Gh4 NS Endo-1 pl7

Number of peaks found: 4 Corr. Area 1: 39.3
 Noise: 0.1

Peak table for sample 9 : Gh4 NS Endo-1 pl7

Peak	Size [bp]	Conc. [pg/μl]	Molarity [pmol/l]	Observations
1	33	0.00	0.0	
2	35	125.00	5,411.3	Lower Marker
3	48	263.17	8,372.4	
4	88	72.40	1,253.2	
5	443	23.92	81.7	
6	10,380	75.00	10.9	Upper Marker

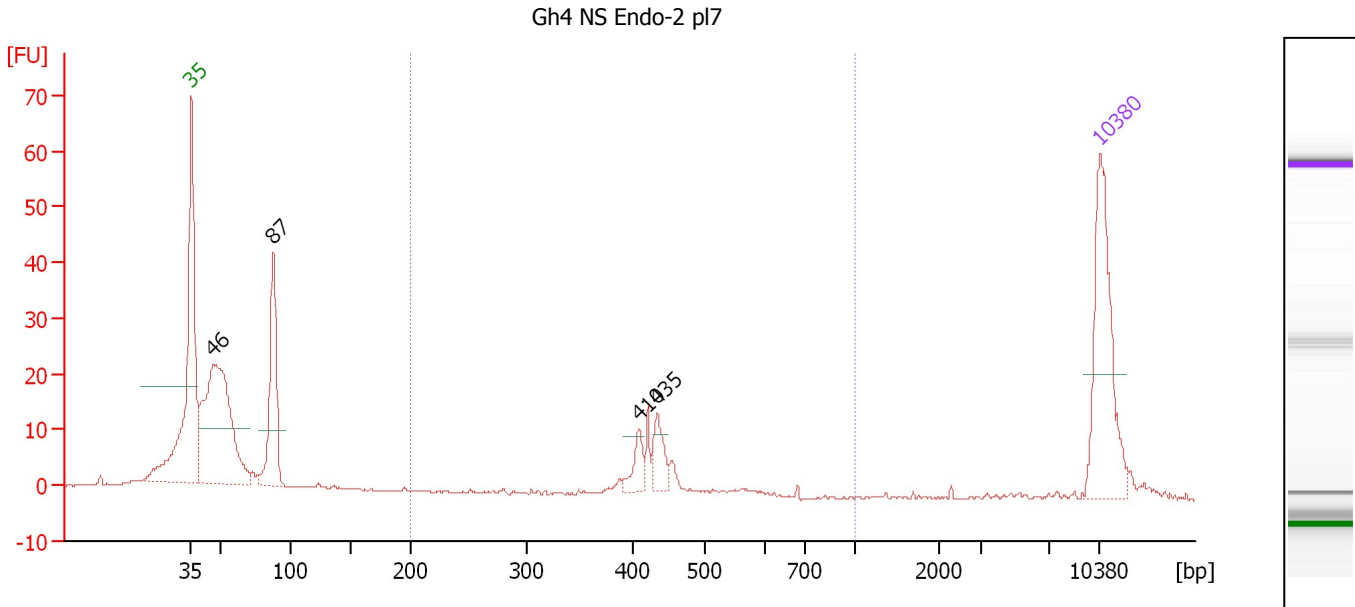
Region table for sample 9 : Gh4 NS Endo-1 pl7

From [bp]	To [bp]	Average Size [bp]	Molarity [pmol/l]	Conc. [pg/μl]	Corr. Area	% of Total	Size distribution in CV [%]	Color
200	1,000	436	158.3	45.15	39.3	12	9.5	Blue

Assay Class: High Sensitivity DNA Assay
 Data Path: C:\...ents and Settings\Bioanalyzer\2012-06-12\2012-06-12_004.xad

Created: 6/12/2012 3:04:31 PM
 Modified: 6/12/2012 3:45:54 PM

Electropherogram Summary Continued ...



Overall Results for sample 10 : Gh4 NS Endo-2 pl7

Number of peaks found: 4 Corr. Area 1: 46.1
 Noise: 0.2

Peak table for sample 10 : Gh4 NS Endo-2 pl7

Peak	Size [bp]	Conc. [pg/μl]	Molarity [pmol/l]	Observations
1	35	125.00	5,411.3	Lower Marker
2	46	229.37	7,535.9	
3	87	99.73	1,727.8	
4	410	15.64	57.8	
5	435	19.94	69.5	
6	10,380	75.00	10.9	Upper Marker

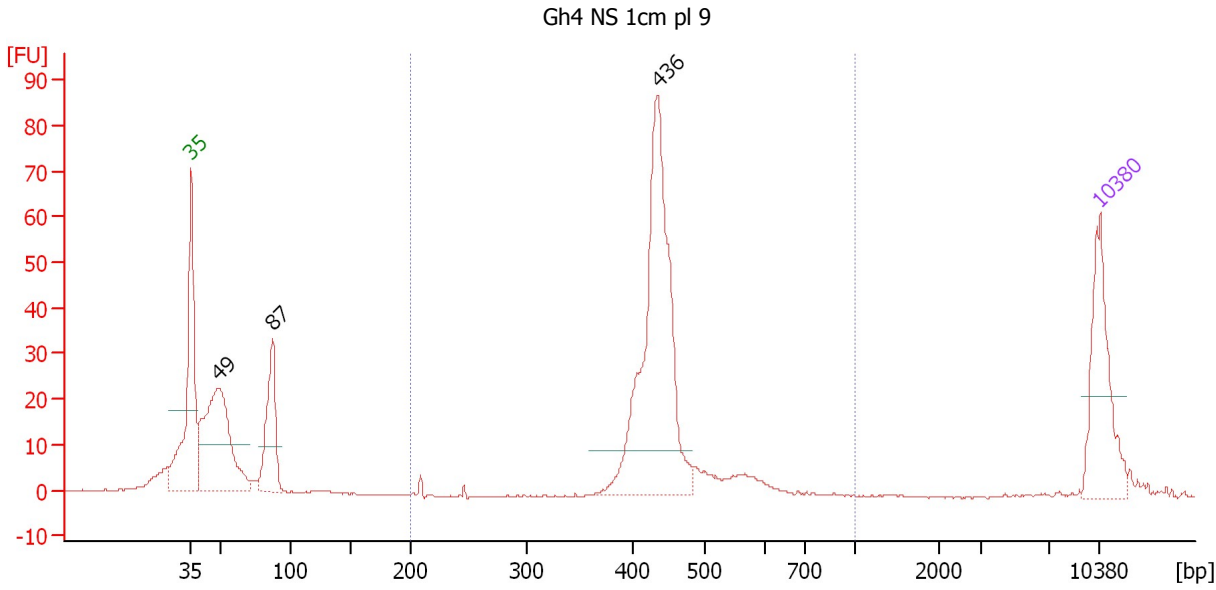
Region table for sample 10 : Gh4 NS Endo-2 pl7

From [bp]	To [bp]	Average Size [bp]	Molarity [pmol/l]	Conc. [pg/μl]	Corr. Area	% of Total	Size distribution in CV [%]	Color
200	1,000	435	206.4	58.69	46.1	19	9.6	Blue

Assay Class: High Sensitivity DNA Assay
 Data Path: C:\...ents and Settings\Bioanalyzer\2012-06-12\2012-06-12_004.xad

Created: 6/12/2012 3:04:31 PM
 Modified: 6/12/2012 3:45:54 PM

Electropherogram Summary Continued ...



Overall Results for sample 11 : Gh4 NS 1cm pl 9

Number of peaks found: 3 Corr. Area 1: 291.9
 Noise: 0.2

Peak table for sample 11 : Gh4 NS 1cm pl 9

Peak	Size [bp]	Conc. [pg/μl]	Molarity [pmol/l]	Observations
1	35	125.00	5,411.3	Lower Marker
2	49	222.57	6,922.8	
3	87	99.80	1,742.0	
4	436	316.54	1,101.1	
5	10,380	75.00	10.9	Upper Marker

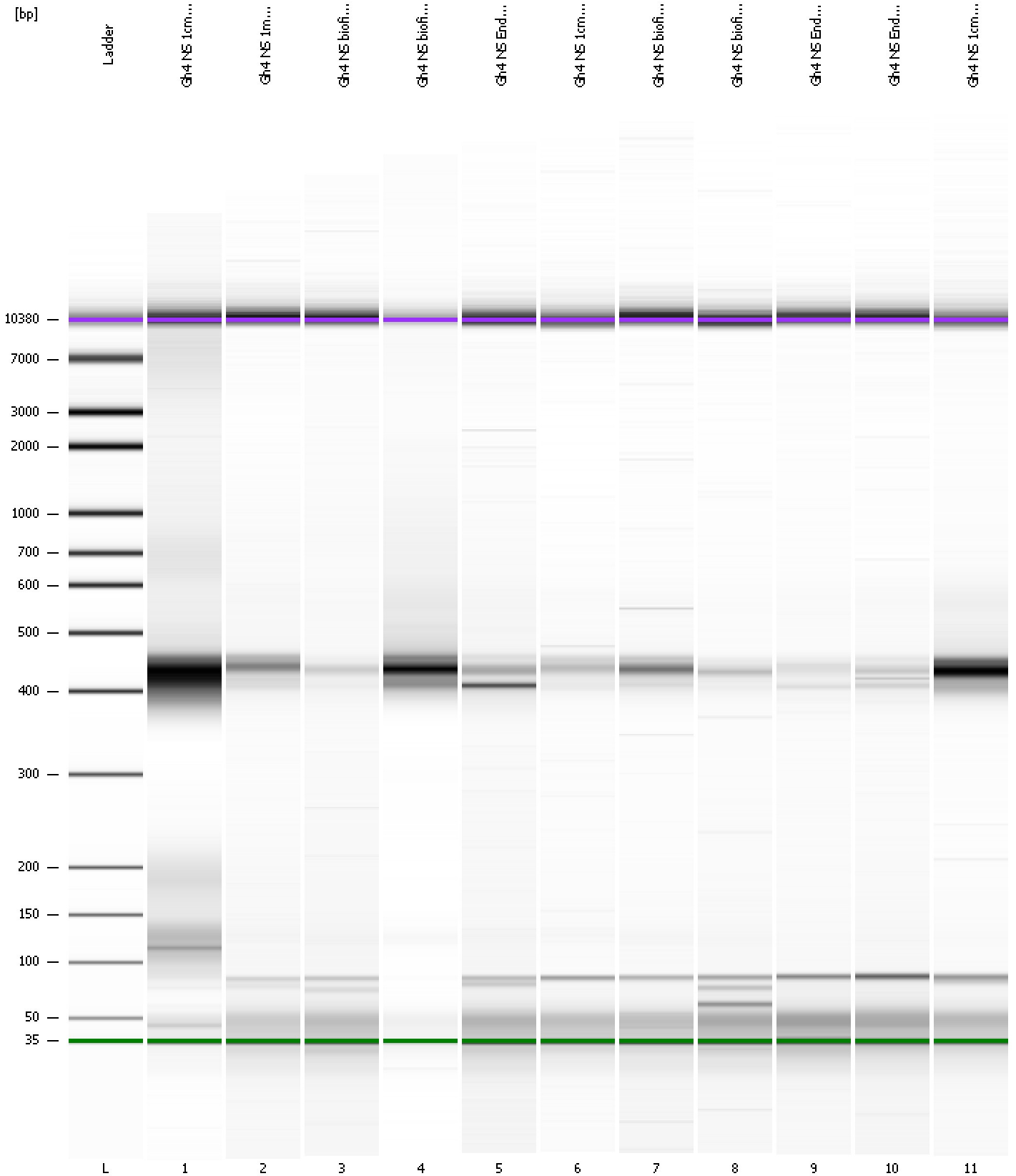
Region table for sample 11 : Gh4 NS 1cm pl 9

From [bp]	To [bp]	Average Size [bp]	Molarity [pmol/l]	Conc. [pg/μl]	Corr. Area	% of Total	Size distribution in CV [%]	Color
200	1,000	448	1,241.4	360.55	291.9	57	12.8	Blue

Assay Class: High Sensitivity DNA Assay
Data Path: C:\...ents and Settings\Bioanalyzer\2012-06-12\2012-06-12_004.xad

Created: 6/12/2012 3:04:31 PM
Modified: 6/12/2012 3:45:54 PM

Gel Image



Assay Class: High Sensitivity DNA Assay
 Data Path: C:\...ents and Settings\Bioanalyzer\2012-06-12\2012-06-12_004.xad

Created: 6/12/2012 3:04:31 PM
 Modified: 6/12/2012 3:45:54 PM

Run Logbook

Description	Number	Source	Category	Sub Category	Time	Time Zone	User	Host
Run ended on port 1 (Number of wells acquired: 12)		Instrument	Run		6/12/2012 3:45:50 PM	(GMT --07:00) Pacific Standard Time	UC Davis	D8XSMGH1
Run started on port 1 (File: C:\Documents and Settings\Bioanalyzer\2012-06-12\2012-06-12_004.xad)		Instrument	Run		6/12/2012 3:04:36 PM	(GMT --07:00) Pacific Standard Time	UC Davis	D8XSMGH1
Product Number : G2938B		Instrument	Run		6/12/2012 3:04:36 PM	(GMT --07:00) Pacific Standard Time	UC Davis	D8XSMGH1
Name :		Instrument	Run		6/12/2012 3:04:36 PM	(GMT --07:00) Pacific Standard Time	UC Davis	D8XSMGH1
Vendor : Agilent Technologies		Instrument	Run		6/12/2012 3:04:36 PM	(GMT --07:00) Pacific Standard Time	UC Davis	D8XSMGH1
Serial# : DE13701086		Instrument	Run		6/12/2012 3:04:36 PM	(GMT --07:00) Pacific Standard Time	UC Davis	D8XSMGH1
Firmware : C.01.069		Instrument	Run		6/12/2012 3:04:36 PM	(GMT --07:00) Pacific Standard Time	UC Davis	D8XSMGH1
Cartridge : Electrode		Instrument	Run		6/12/2012 3:04:36 PM	(GMT --07:00) Pacific Standard Time	UC Davis	D8XSMGH1