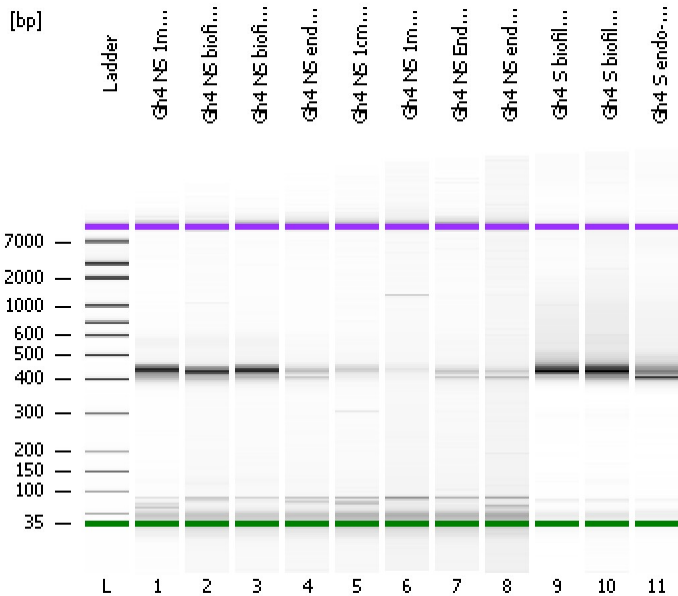


Assay Class: High Sensitivity DNA Assay
Data Path: C:\...ents and Settings\Bioanalyzer\2012-06-12\2012-06-12_005.xad

Created: 6/12/2012 3:49:23 PM
Modified: 6/12/2012 4:31:54 PM

Electrophoresis File Run Summary



Instrument Information:

Instrument Name: DE13701086 Firmware: C.01.069
Serial#: DE13701086 Type: G2938B

Assay Information:

Assay Origin Path: C:\Program Files\Agilent\2100 bioanalyzer\2100 expert\assays\dsDNA\High Sensitivity DNA.xsy
Assay Class: High Sensitivity DNA Assay
Version: 1.03
Assay Comments: Copyright © 2003-2010 Agilent Technologies

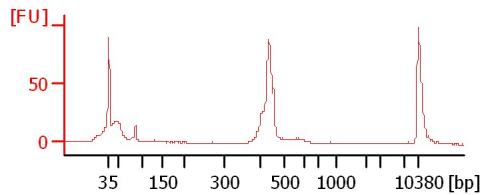
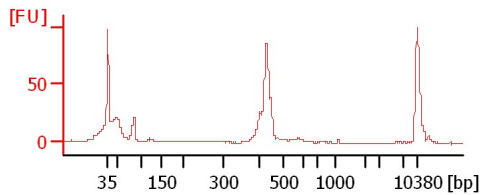
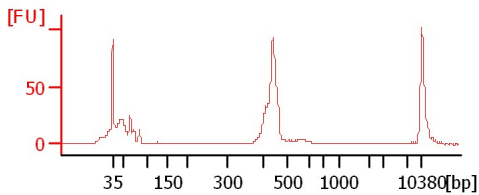
Chip Information:

Chip Lot #: Reagent Kit Lot #: Chip Comments:

Gh4 NS 1mm pl9

Gh4 NS biofilm-1 pl13

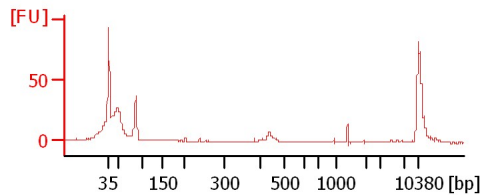
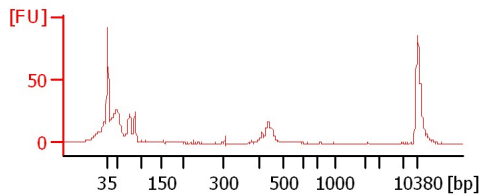
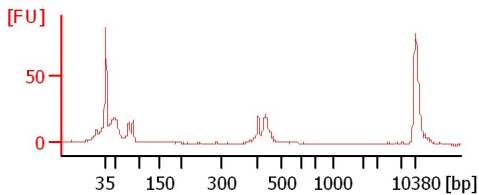
Gh4 NS biofilm-2 pl13



Gh4 NS endo-1 pl13

Gh4 NS 1cm pl11

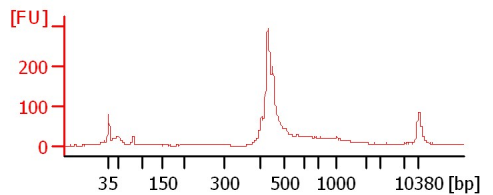
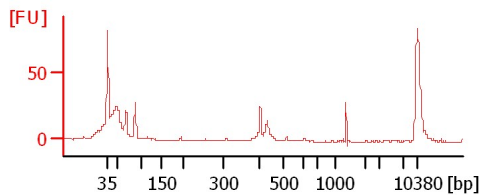
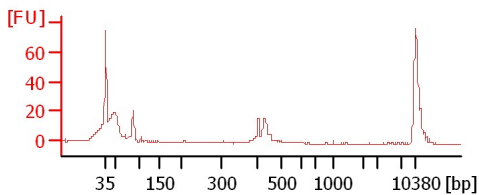
Gh4 NS 1mm pl11



Gh4 NS Endo-1 pl15

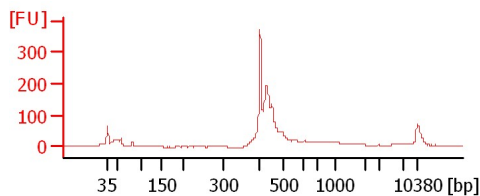
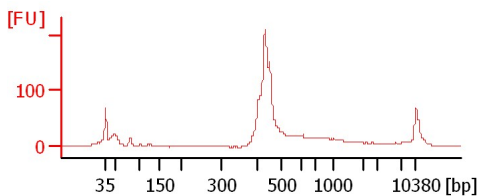
Gh4 NS endo-2 pl15

Gh4 S biofilm-1 pl 6



Gh4 S biofilm-2 pl 6

Gh4 S endo-1 pl 6



Assay Class: High Sensitivity DNA Assay
 Data Path: C:\...ents and Settings\Bioanalyzer\2012-06-12\2012-06-12_005.xad

Created: 6/12/2012 3:49:23 PM
 Modified: 6/12/2012 4:31:54 PM

Electrophoresis File Run Summary (Chip Summary)

Sample Name	Sample Comment	Rest. Digest	Status	Observation	Result Label	Result Color
Gh4 NS 1mm pl9		<input type="checkbox"/>	✓			
Gh4 NS biofilm-1 pl13		<input type="checkbox"/>	✓			
Gh4 NS biofilm-2 pl13		<input type="checkbox"/>	✓			
Gh4 NS endo-1 pl13		<input type="checkbox"/>	✓			
Gh4 NS 1cm pl11		<input type="checkbox"/>	✓			
Gh4 NS 1mm pl11		<input type="checkbox"/>	✓			
Gh4 NS Endo-1 pl15		<input type="checkbox"/>	✓			
Gh4 NS endo-2 pl15		<input type="checkbox"/>	✓			
Gh4 S biofilm-1 pl 6		<input type="checkbox"/>	✓			
Gh4 S biofilm-2 pl 6		<input type="checkbox"/>	✓			
Gh4 S endo-1 pl 6		<input type="checkbox"/>	✓			
Ladder		<input type="checkbox"/>	✓			

Chip Lot #

Reagent Kit Lot #

Chip Comments :

Assay Class: High Sensitivity DNA Assay
Data Path: C:\...ents and Settings\Bioanalyzer\2012-06-12\2012-06-12_005.xad

Created: 6/12/2012 3:49:23 PM
Modified: 6/12/2012 4:31:54 PM

Electrophoresis Assay Details

General Analysis Settings

Number of Available Sample and Ladder Wells (Max.) : 12
Minimum Visible Range [s] : 32
Maximum Visible Range [s] : 138
Start Analysis Time Range [s] : 33
End Analysis Time Range [s] : 137.5
Ladder Concentration [pg/μl] : 1950
Uses Standard Area for Ladder Fragments
Lower Marker Concentration [pg/μl] : 125
Upper Marker Concentration [pg/μl] : 75
Used Upper Marker for Quantitation
Standard Curve Fit is Point to Point
Show Data Aligned to Lower and Upper Marker

Integrator Settings

Integration Start Time [s] : 33.05
Integration End Time [s] : 137
Slope Threshold : 0.8
Height Threshold [FU] : 5
Area Threshold : 0.1
Width Threshold [s] : 0.6
Baseline Plateau [s] : 0.5

Filter Settings

Filter Width [s] : 0.5
Polynomial Order : 4

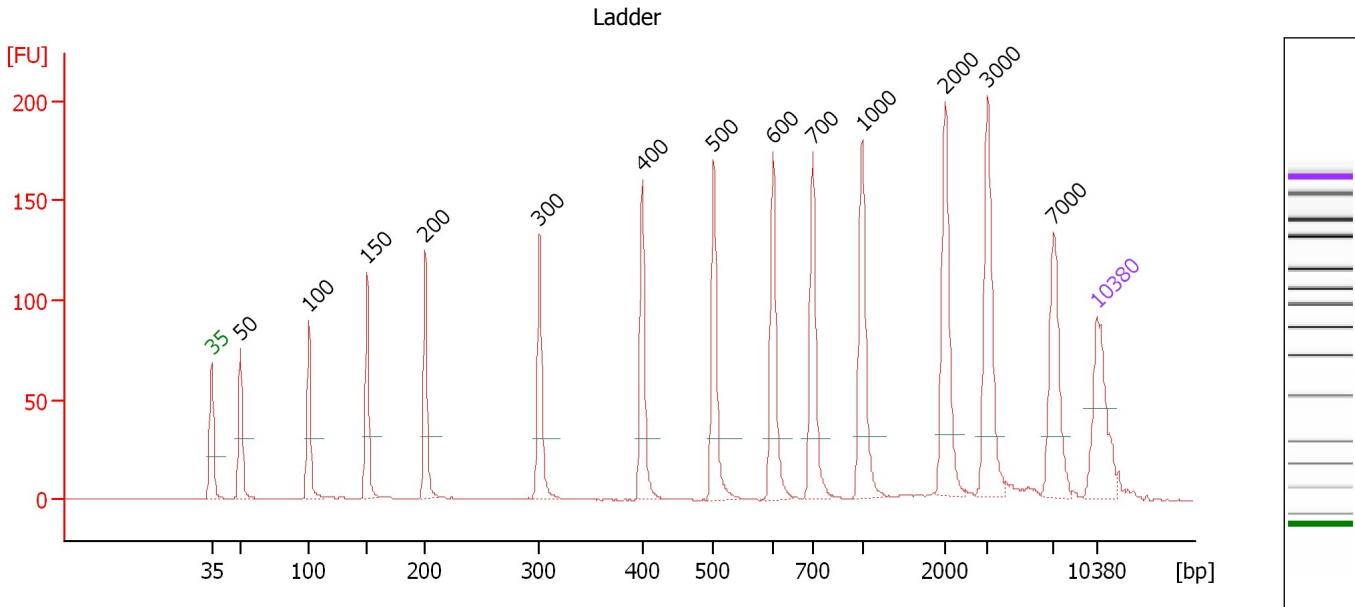
Ladder

Ladder Peak	Size	Area
1	35	160
2	50	210
3	100	208
4	150	221
5	200	242
6	300	270
7	400	305
8	500	306
9	600	336
10	700	321
11	1000	366
12	2000	413
13	3000	411
14	7000	400
15	10380	214

Assay Class: High Sensitivity DNA Assay
 Data Path: C:\...ents and Settings\Bioanalyzer\2012-06-12\2012-06-12_005.xad

Created: 6/12/2012 3:49:23 PM
 Modified: 6/12/2012 4:31:54 PM

Electropherogram Summary



Overall Results for Ladder

Noise: 0.1

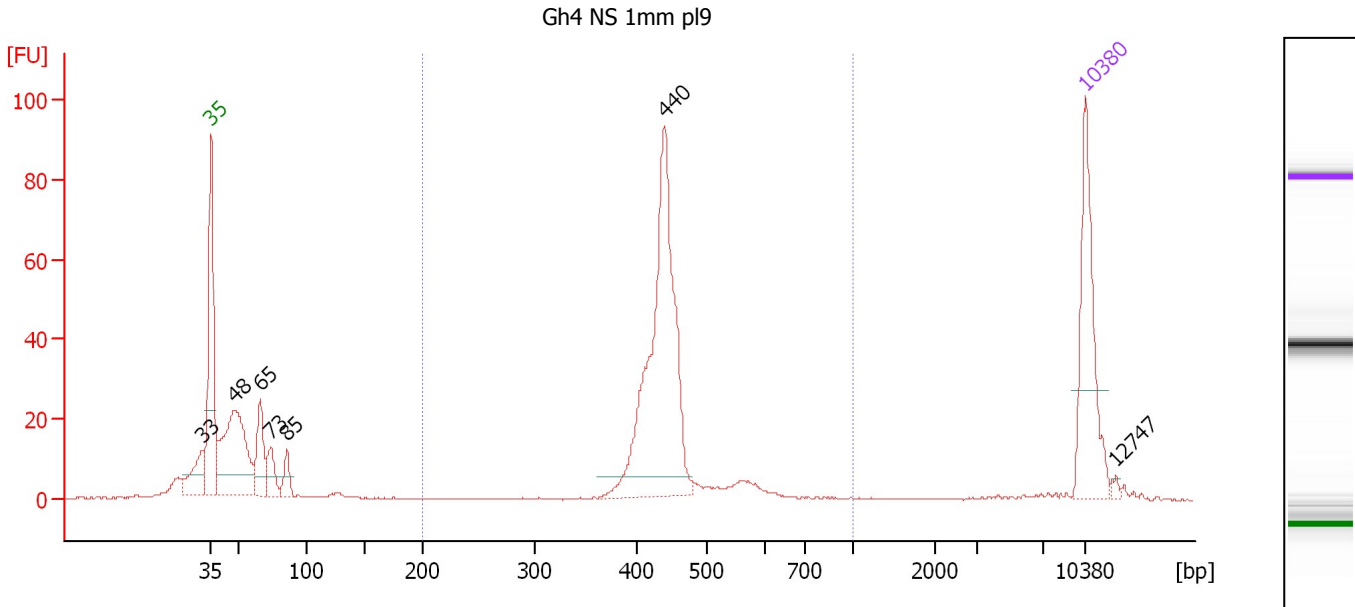
Peak table for Ladder

Peak	Size [bp]	Conc. [pg/μl]	Molarity [pmol/l]	Observations
1	35	125.00	5,411.3	Lower Marker
2	50	150.00	4,545.5	Ladder Peak
3	100	150.00	2,272.7	Ladder Peak
4	150	150.00	1,515.2	Ladder Peak
5	200	150.00	1,136.4	Ladder Peak
6	300	150.00	757.6	Ladder Peak
7	400	150.00	568.2	Ladder Peak
8	500	150.00	454.5	Ladder Peak
9	600	150.00	378.8	Ladder Peak
10	700	150.00	324.7	Ladder Peak
11	1,000	150.00	227.3	Ladder Peak
12	2,000	150.00	113.6	Ladder Peak
13	3,000	150.00	75.8	Ladder Peak
14	7,000	150.00	32.5	Ladder Peak
15	10,380	75.00	10.9	Upper Marker

Assay Class: High Sensitivity DNA Assay
 Data Path: C:\...ents and Settings\Bioanalyzer\2012-06-12\2012-06-12_005.xad

Created: 6/12/2012 3:49:23 PM
 Modified: 6/12/2012 4:31:54 PM

Electropherogram Summary Continued ...



Overall Results for sample 1 : Gh4 NS 1mm pl9

Number of peaks found: 7 Corr. Area 1: 304.5
 Noise: 0.2

Peak table for sample 1 : Gh4 NS 1mm pl9

Peak	Size [bp]	Conc. [pg/μl]	Molarity [pmol/l]	Observations
1	33	0.00	0.0	
2	35	125.00	5,411.3	Lower Marker
3	48	164.78	5,238.5	
4	65	51.12	1,186.1	
5	73	27.54	570.0	
6	85	19.26	342.9	
7	440	266.77	918.1	
8	10,380	75.00	10.9	Upper Marker
9	12,747	0.00	0.0	

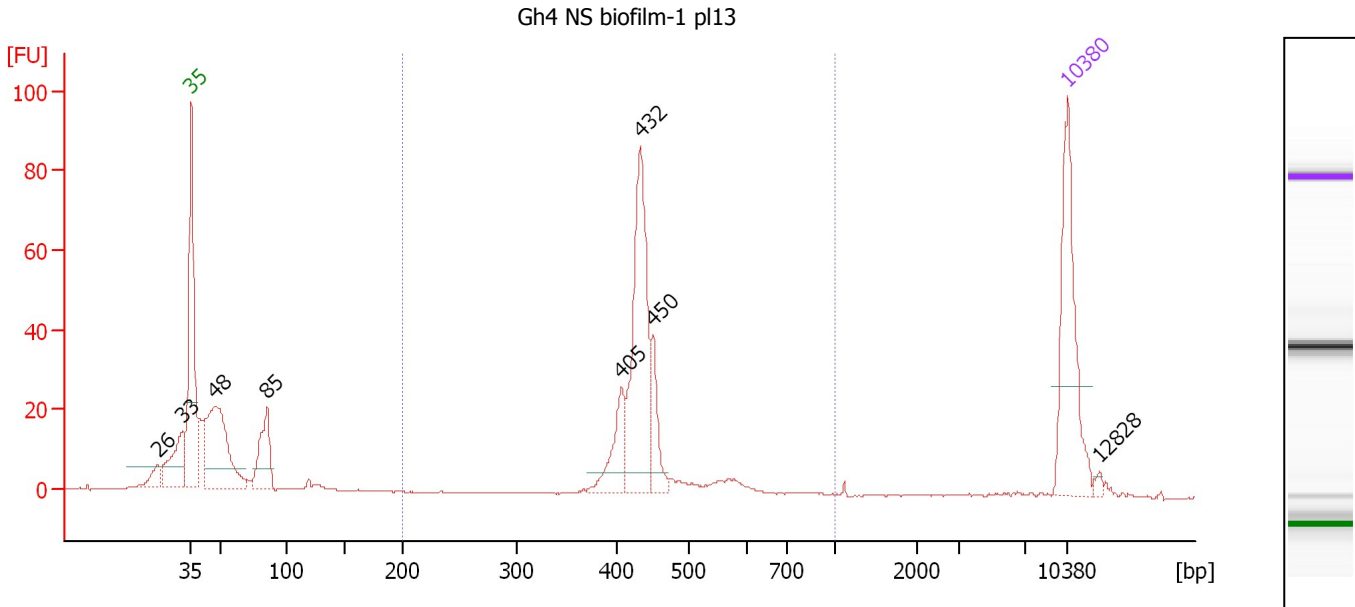
Region table for sample 1 : Gh4 NS 1mm pl9

From [bp]	To [bp]	Average Size [bp]	Molarity [pmol/l]	Conc. [pg/μl]	Corr. Area	% of Total	Size distribution in CV [%]	Color
200	1,000	446	1,049.4	304.38	304.5	52	11.7	Blue

Assay Class: High Sensitivity DNA Assay
 Data Path: C:\...ents and Settings\Bioanalyzer\2012-06-12\2012-06-12_005.xad

Created: 6/12/2012 3:49:23 PM
 Modified: 6/12/2012 4:31:54 PM

Electropherogram Summary Continued ...



Overall Results for sample 2 : Gh4 NS biofilm-1 pl13

Number of peaks found: 8 Corr. Area 1: 249.4
 Noise: 0.2

Peak table for sample 2 : Gh4 NS biofilm-1 pl13

Peak	Size [bp]	Conc. [pg/μl]	Molarity [pmol/l]	Observations
1	26	0.00	0.0	
2	33	0.00	0.0	
3	35	125.00	5,411.3	Lower Marker
4	48	138.52	4,411.3	
5	85	55.91	994.4	
6	405	38.40	143.6	
7	432	139.26	488.2	
8	450	30.47	102.6	
9	10,380	75.00	10.9	Upper Marker
10	12,828	0.00	0.0	

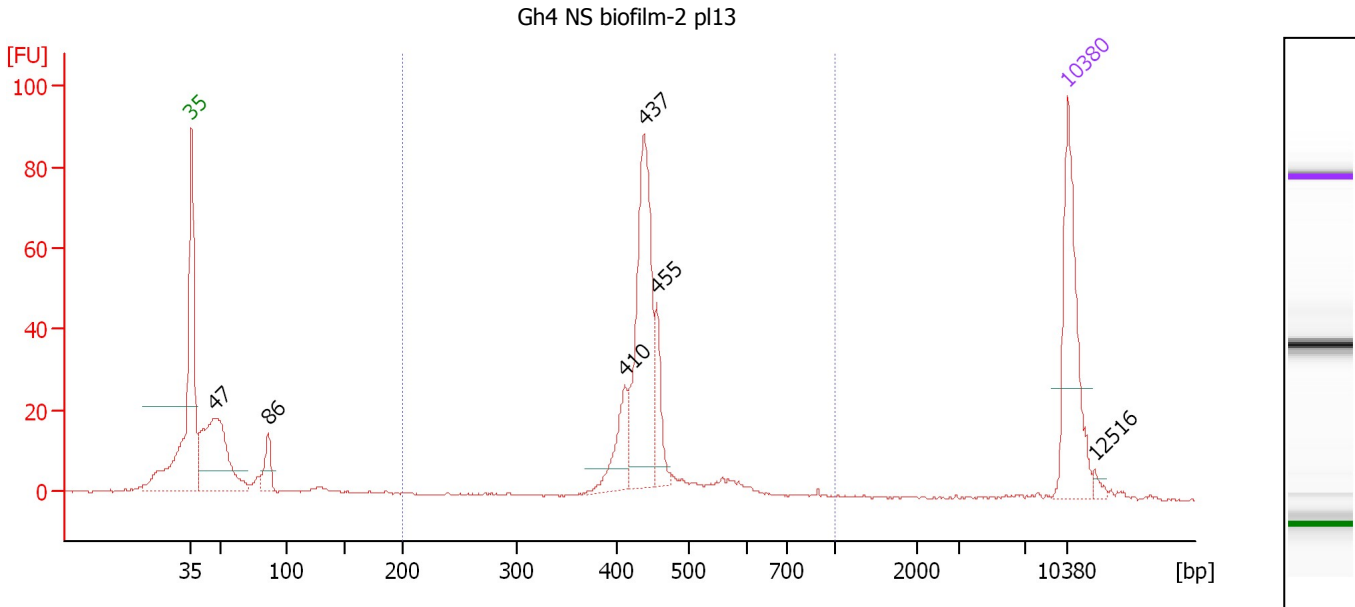
Region table for sample 2 : Gh4 NS biofilm-1 pl13

From [bp]	To [bp]	Average Size [bp]	Molarity [pmol/l]	Conc. [pg/μl]	Corr. Area	% of Total	Size distribution in CV [%]	Color
200	1,000	444	814.4	235.22	249.4	49	12.8	Blue

Assay Class: High Sensitivity DNA Assay
 Data Path: C:\...ents and Settings\Bioanalyzer\2012-06-12\2012-06-12_005.xad

Created: 6/12/2012 3:49:23 PM
 Modified: 6/12/2012 4:31:54 PM

Electropherogram Summary Continued ...



Overall Results for sample 3 : Gh4 NS biofilm-2 pl13

Number of peaks found: 6 Corr. Area 1: 288.5
 Noise: 0.2

Peak table for sample 3 : Gh4 NS biofilm-2 pl13

Peak	Size [bp]	Conc. [pg/μl]	Molarity [pmol/l]	Observations
1	35	125.00	5,411.3	Lower Marker
2	47	155.04	5,009.0	
3	86	24.71	435.2	
4	410	39.30	145.3	
5	437	154.97	537.2	
6	455	31.39	104.5	
7	10,380	75.00	10.9	Upper Marker
8	12,516	0.00	0.0	

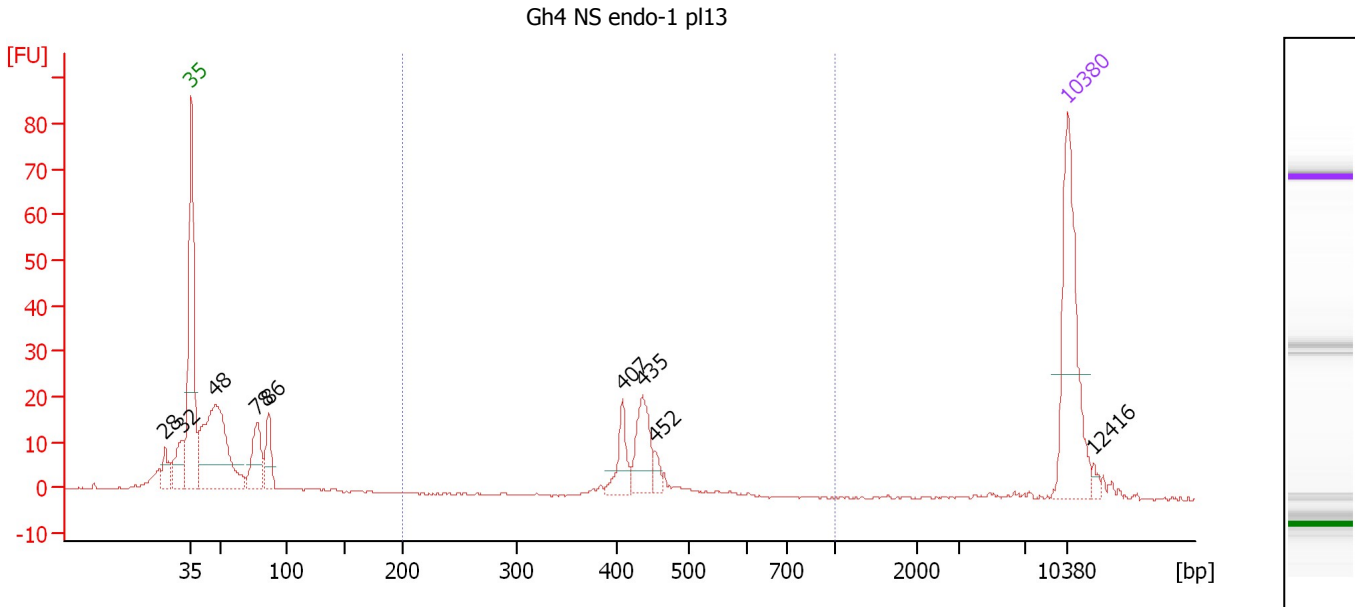
Region table for sample 3 : Gh4 NS biofilm-2 pl13

From [bp]	To [bp]	Average Size [bp]	Molarity [pmol/l]	Conc. [pg/μl]	Corr. Area	% of Total	Size distribution in CV [%]	Color
200	1,000	449	976.8	282.05	288.5	61	15.1	Blue

Assay Class: High Sensitivity DNA Assay
 Data Path: C:\...ents and Settings\Bioanalyzer\2012-06-12\2012-06-12_005.xad

Created: 6/12/2012 3:49:23 PM
 Modified: 6/12/2012 4:31:54 PM

Electropherogram Summary Continued ...



Overall Results for sample 4 : Gh4 NS endo-1 pl13

Number of peaks found: 9 Corr. Area 1: 78.0
 Noise: 0.2

Peak table for sample 4 : Gh4 NS endo-1 pl13

Peak	Size [bp]	Conc. [pg/μl]	Molarity [pmol/l]	Observations
1	28	0.00	0.0	
2	32	0.00	0.0	
3	35	125.00	5,411.3	Lower Marker
4	48	157.22	4,997.3	
5	78	42.83	834.1	
6	86	27.80	489.3	
7	407	23.61	88.0	
8	435	37.63	131.1	
9	452	6.84	22.9	
10	10,380	75.00	10.9	Upper Marker
11	12,416	0.00	0.0	

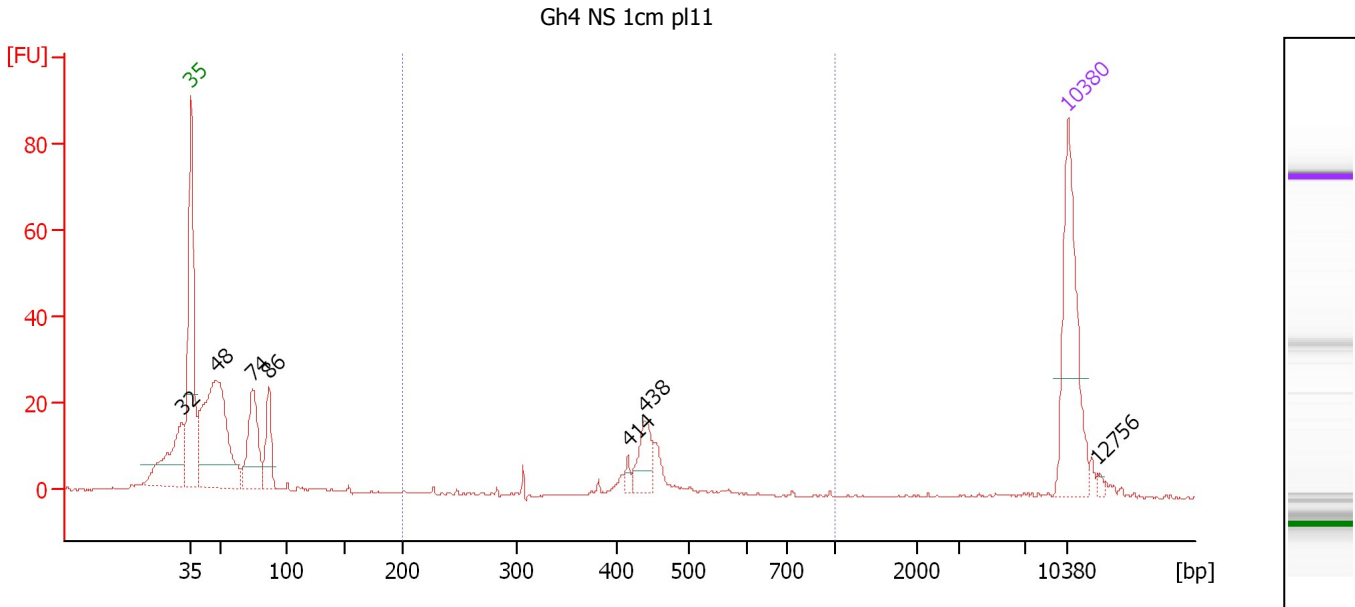
Region table for sample 4 : Gh4 NS endo-1 pl13

From [bp]	To [bp]	Average Size [bp]	Molarity [pmol/l]	Conc. [pg/μl]	Corr. Area	% of Total	Size distribution in CV [%]	Color
200	1,000	437	291.1	83.38	78.0	25	8.7	Blue

Assay Class: High Sensitivity DNA Assay
 Data Path: C:\...ents and Settings\Bioanalyzer\2012-06-12\2012-06-12_005.xad

Created: 6/12/2012 3:49:23 PM
 Modified: 6/12/2012 4:31:54 PM

Electropherogram Summary Continued ...



Overall Results for sample 5 : Gh4 NS 1cm pl11

Number of peaks found: 7 Corr. Area 1: 58.0
 Noise: 0.2

Peak table for sample 5 : Gh4 NS 1cm pl11

Peak	Size [bp]	Conc. [pg/μl]	Molarity [pmol/l]	Observations
1	32	0.00	0.0	
2	35	125.00	5,411.3	Lower Marker
3	48	212.27	6,641.0	
4	74	75.15	1,534.0	
5	86	40.79	715.3	
6	414	5.26	19.2	
7	438	28.86	99.7	
8	10,380	75.00	10.9	Upper Marker
9	12,756	0.00	0.0	

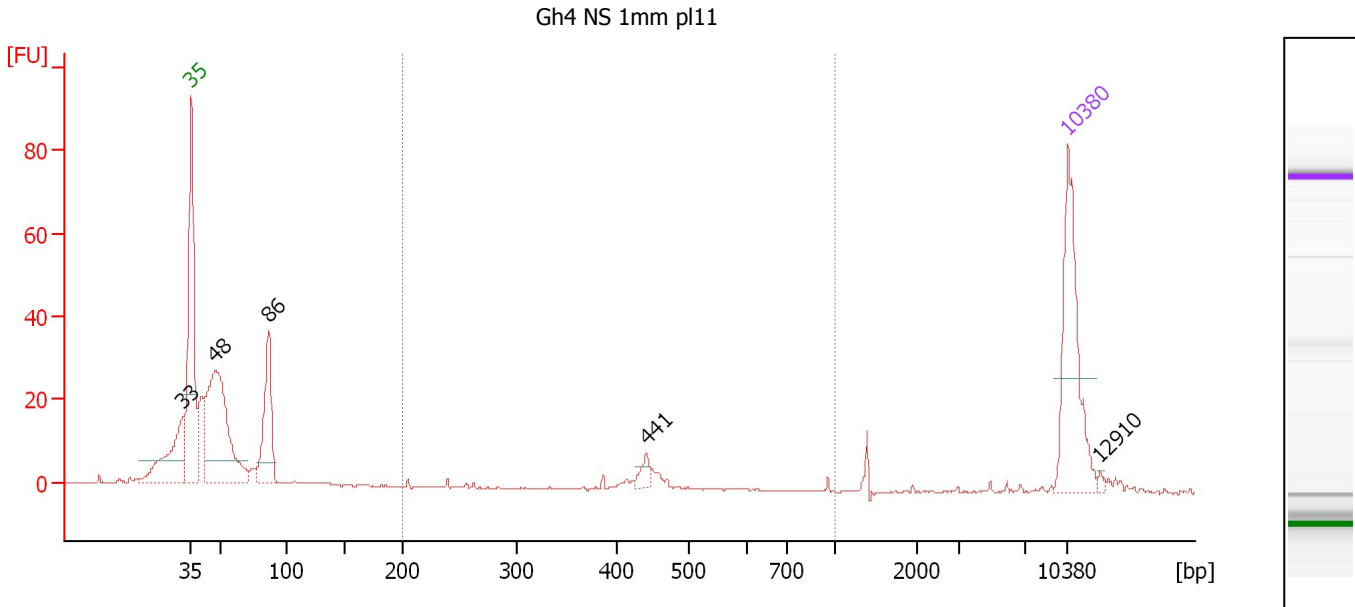
Region table for sample 5 : Gh4 NS 1cm pl11

From [bp]	To [bp]	Average Size [bp]	Molarity [pmol/l]	Conc. [pg/μl]	Corr. Area	% of Total	Size distribution in CV [%]	Color
200	1,000	443	217.9	62.40	58.0	16	13.0	Blue

Assay Class: High Sensitivity DNA Assay
 Data Path: C:\...ents and Settings\Bioanalyzer\2012-06-12\2012-06-12_005.xad

Created: 6/12/2012 3:49:23 PM
 Modified: 6/12/2012 4:31:54 PM

Electropherogram Summary Continued ...



Overall Results for sample 6 : Gh4 NS 1mm pl11

Number of peaks found: 5 Corr. Area 1: 19.0
 Noise: 0.1

Peak table for sample 6 : Gh4 NS 1mm pl11

Peak	Size [bp]	Conc. [pg/μl]	Molarity [pmol/l]	Observations
1	33	0.00	0.0	
2	35	125.00	5,411.3	Lower Marker
3	48	197.32	6,276.6	
4	86	84.08	1,481.2	
5	441	9.42	32.4	
6	10,380	75.00	10.9	Upper Marker
7	12,910	0.00	0.0	

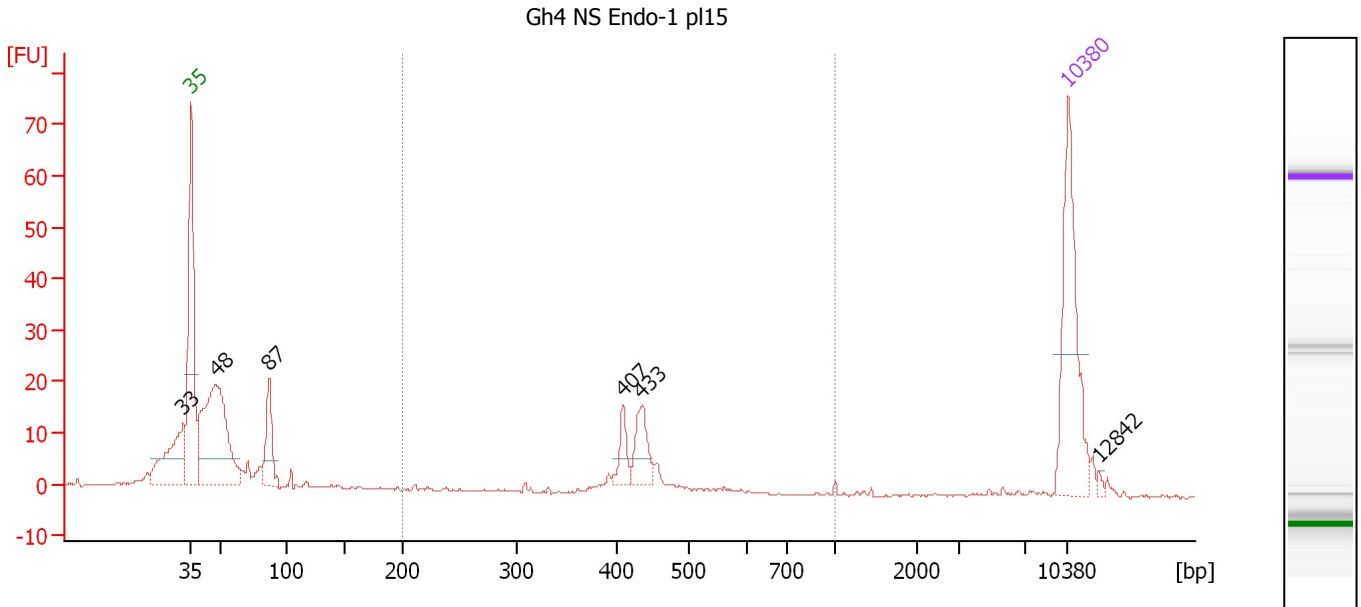
Region table for sample 6 : Gh4 NS 1mm pl11

From [bp]	To [bp]	Average Size [bp]	Molarity [pmol/l]	Conc. [pg/μl]	Corr. Area	% of Total	Size distribution in CV [%]	Color
200	1,000	443	76.3	20.74	19.0	6	24.4	Blue

Assay Class: High Sensitivity DNA Assay
 Data Path: C:\...ents and Settings\Bioanalyzer\2012-06-12\2012-06-12_005.xad

Created: 6/12/2012 3:49:23 PM
 Modified: 6/12/2012 4:31:54 PM

Electropherogram Summary Continued ...



Overall Results for sample 7 : Gh4 NS Endo-1 pl15

Number of peaks found: 6 Corr. Area 1: 52.9
 Noise: 0.2

Peak table for sample 7 : Gh4 NS Endo-1 pl15

Peak	Size [bp]	Conc. [pg/μl]	Molarity [pmol/l]	Observations
1	33	0.00	0.0	
2	35	125.00	5,411.3	Lower Marker
3	48	186.06	5,904.1	
4	87	44.00	770.4	
5	407	16.41	61.1	
6	433	27.92	97.7	
7	10,380	75.00	10.9	Upper Marker
8	12,842	0.00	0.0	

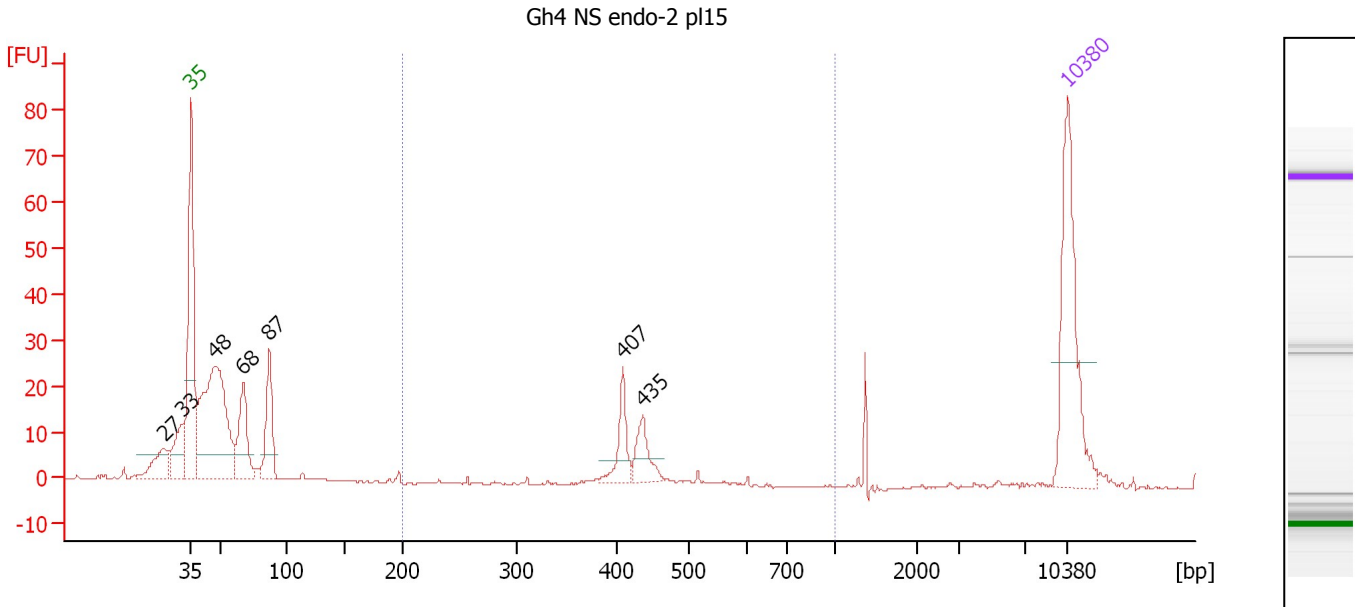
Region table for sample 7 : Gh4 NS Endo-1 pl15

From [bp]	To [bp]	Average Size [bp]	Molarity [pmol/l]	Conc. [pg/μl]	Corr. Area	% of Total	Size distribution in CV [%]	Color
200	1,000	431	229.3	64.37	52.9	20	11.4	Blue

Assay Class: High Sensitivity DNA Assay
 Data Path: C:\...ents and Settings\Bioanalyzer\2012-06-12\2012-06-12_005.xad

Created: 6/12/2012 3:49:23 PM
 Modified: 6/12/2012 4:31:54 PM

Electropherogram Summary Continued ...



Overall Results for sample 8 : Gh4 NS endo-2 pl15

Number of peaks found: 7 Corr. Area 1: 58.8
 Noise: 0.2

Peak table for sample 8 : Gh4 NS endo-2 pl15

Peak	Size [bp]	Conc. [pg/μl]	Molarity [pmol/l]	Observations
1	27	0.00	0.0	
2	33	0.00	0.0	
3	35	125.00	5,411.3	Lower Marker
4	48	201.10	6,414.2	
5	68	56.71	1,273.0	
6	87	50.90	888.5	
7	407	25.27	94.0	
8	435	22.99	80.0	
9	10,380	75.00	10.9	Upper Marker

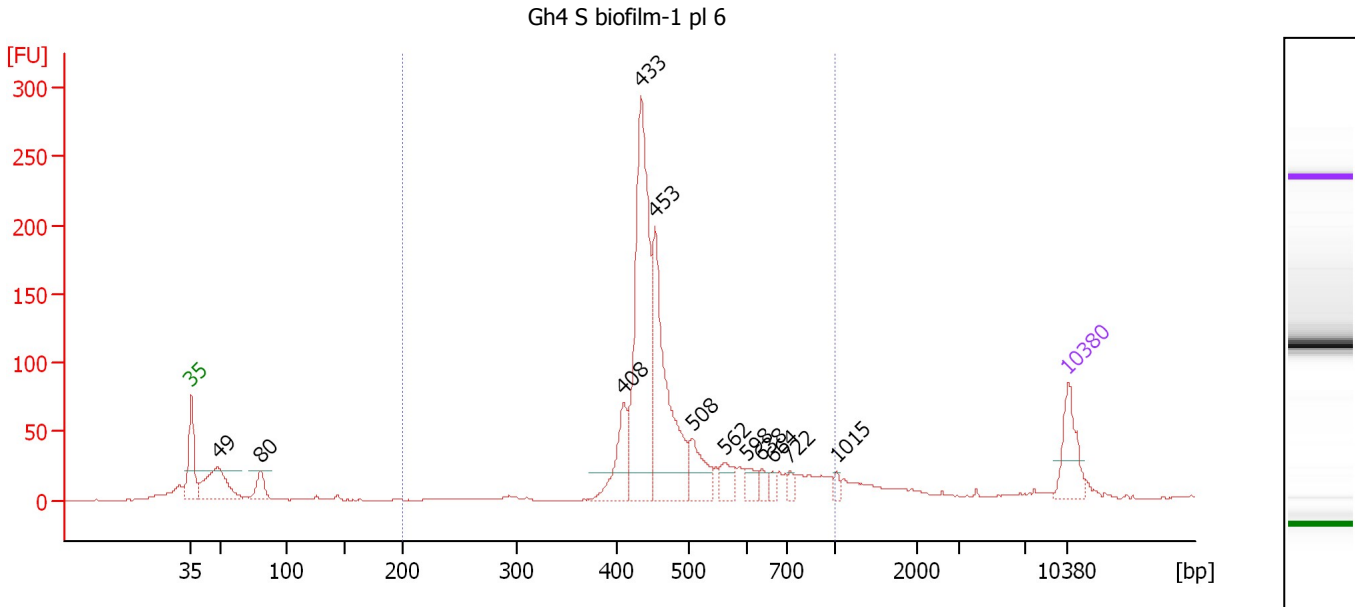
Region table for sample 8 : Gh4 NS endo-2 pl15

From [bp]	To [bp]	Average Size [bp]	Molarity [pmol/l]	Conc. [pg/μl]	Corr. Area	% of Total	Size distribution in CV [%]	Color
200	1,000	431	226.7	63.24	58.8	16	13.0	Blue

Assay Class: High Sensitivity DNA Assay
 Data Path: C:\...ents and Settings\Bioanalyzer\2012-06-12\2012-06-12_005.xad

Created: 6/12/2012 3:49:23 PM
 Modified: 6/12/2012 4:31:54 PM

Electropherogram Summary Continued ...



Setpoint Deviations for sample 9 : Gh4 S biofilm-1 pl 6

Height Threshold [FU] : 20

Overall Results for sample 9 : Gh4 S biofilm-1 pl 6

Number of peaks found: 12 Corr. Area 1: 1,173.3
 Noise: 0.3

Peak table for sample 9 : Gh4 S biofilm-1 pl 6

Peak	Size [bp]	Conc. [pg/μl]	Molarity [pmol/l]	Observations
1	35	125.00	5,411.3	Lower Marker
2	49	175.65	5,452.0	
3	80	51.09	964.2	
4	408	115.34	428.2	
5	433	527.75	1,847.2	
6	453	372.40	1,246.5	
7	508	87.23	260.4	
8	562	40.99	110.4	
9	598	29.56	74.9	
10	638	17.32	41.2	
11	664	15.61	35.6	
12	722	15.00	31.5	
13	1,015	11.23	16.8	
14	10,380	75.00	10.9	Upper Marker

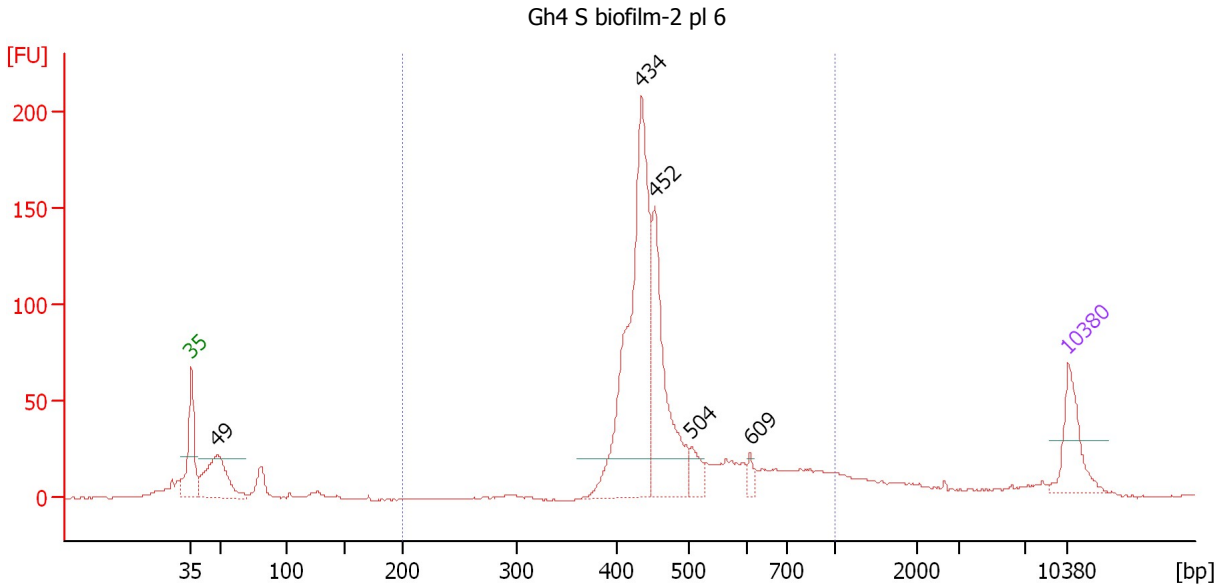
Region table for sample 9 : Gh4 S biofilm-1 pl 6

From [bp]	To [bp]	Average Size [bp]	Molarity [pmol/l]	Conc. [pg/μl]	Corr. Area	% of Total	Size distribution in CV [%]	Color
200	1,000	494	4,101.2	1,278.40	1,173.3	81	22.8	Blue

Assay Class: High Sensitivity DNA Assay
 Data Path: C:\...ents and Settings\Bioanalyzer\2012-06-12\2012-06-12_005.xad

Created: 6/12/2012 3:49:23 PM
 Modified: 6/12/2012 4:31:54 PM

Electropherogram Summary Continued ...



Setpoint Deviations for sample 10 : Gh4 S biofilm-2 pl 6

Height Threshold [FU] : 20

Overall Results for sample 10 : Gh4 S biofilm-2 pl 6

Number of peaks found: 5 Corr. Area 1: 913.6
 Noise: 0.3

Peak table for sample 10 : Gh4 S biofilm-2 pl 6

Peak	Size [bp]	Conc. [pg/μl]	Molarity [pmol/l]	Observations
1	35	125.00	5,411.3	Lower Marker
2	49	188.56	5,876.6	
3	434	618.83	2,161.2	
4	452	298.15	999.2	
5	504	40.35	121.2	
6	609	16.38	40.8	
7	10,380	75.00	10.9	Upper Marker

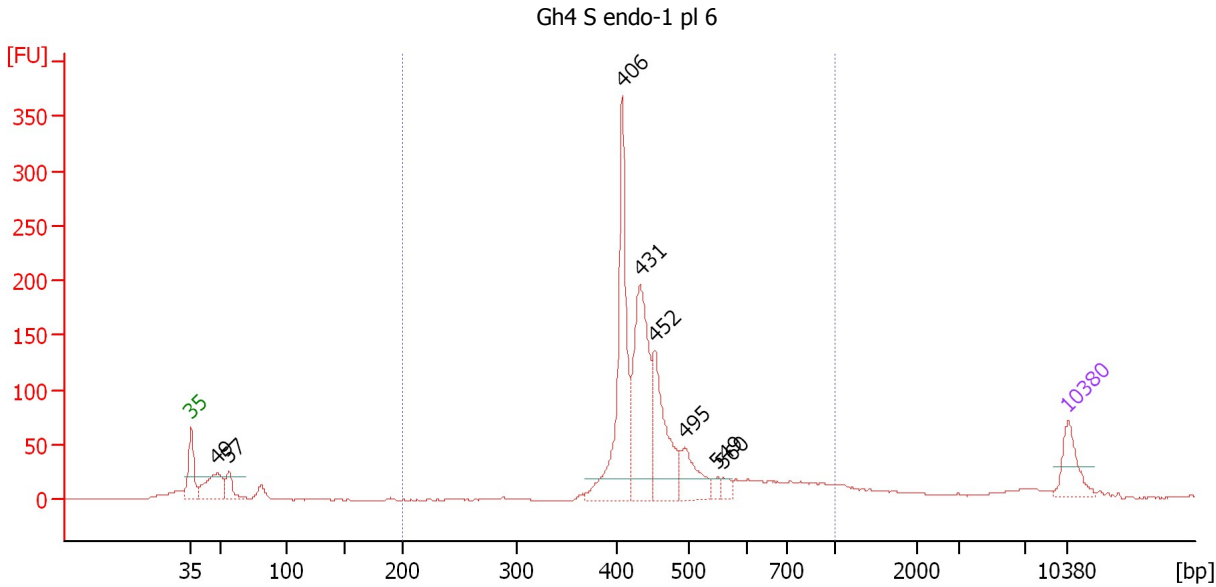
Region table for sample 10 : Gh4 S biofilm-2 pl 6

From [bp]	To [bp]	Average Size [bp]	Molarity [pmol/l]	Conc. [pg/μl]	Corr. Area	% of Total	Size distribution in CV [%]	Color
200	1,000	487	3,619.1	1,110.26	913.6	80	23.1	Blue

Assay Class: High Sensitivity DNA Assay
 Data Path: C:\...ents and Settings\Bioanalyzer\2012-06-12\2012-06-12_005.xad

Created: 6/12/2012 3:49:23 PM
 Modified: 6/12/2012 4:31:54 PM

Electropherogram Summary Continued ...



Setpoint Deviations for sample 11 : Gh4 S endo-1 pl 6

Height Threshold [FU] : 20

Overall Results for sample 11 : Gh4 S endo-1 pl 6

Number of peaks found: 8 Corr. Area 1: 1,195.2
 Noise: 0.3

Peak table for sample 11 : Gh4 S endo-1 pl 6

Peak	Size [bp]	Conc. [pg/μl]	Molarity [pmol/l]	Observations
1	35	125.00	5,411.3	Lower Marker
2	49	158.73	4,937.7	
3	57	70.33	1,871.2	
4	406	490.84	1,830.3	
5	431	413.61	1,452.6	
6	452	271.21	908.4	
7	495	119.06	364.4	
8	549	19.08	52.7	
9	560	24.28	65.7	
10	10,380	75.00	10.9	Upper Marker

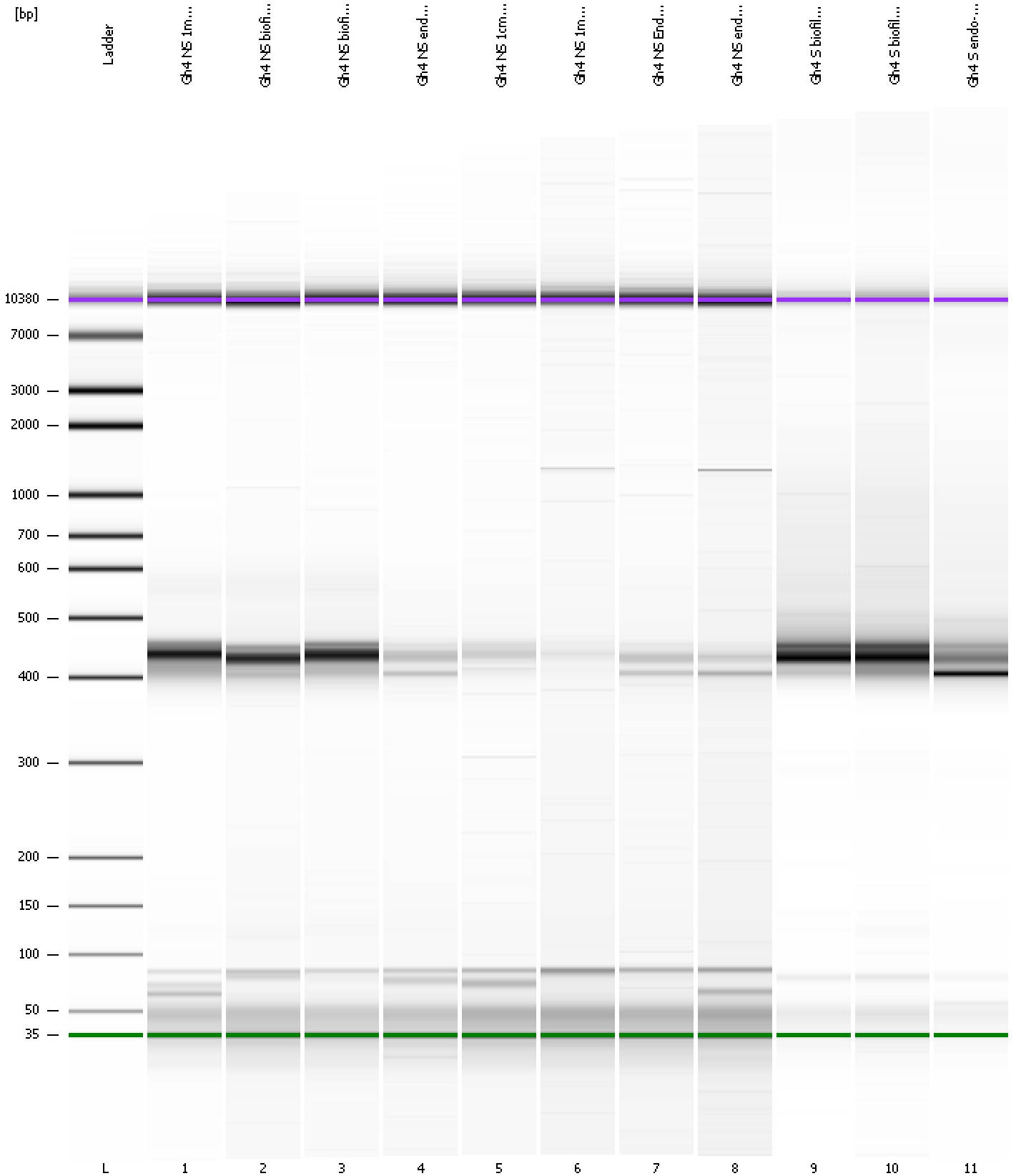
Region table for sample 11 : Gh4 S endo-1 pl 6

From [bp]	To [bp]	Average Size [bp]	Molarity [pmol/l]	Conc. [pg/μl]	Corr. Area	% of Total	Size distribution in CV [%]	Color
200	1,000	474	4,795.4	1,436.33	1,195.2	82	22.9	Blue

Assay Class: High Sensitivity DNA Assay
Data Path: C:\...ents and Settings\Bioanalyzer\2012-06-12\2012-06-12_005.xad

Created: 6/12/2012 3:49:23 PM
Modified: 6/12/2012 4:31:54 PM

Gel Image



Assay Class: High Sensitivity DNA Assay
 Data Path: C:\...ents and Settings\Bioanalyzer\2012-06-12\2012-06-12_005.xad

Created: 6/12/2012 3:49:23 PM
 Modified: 6/12/2012 4:31:54 PM

Run Logbook

Description	Number	Source	Category	Sub Category	Time	Time Zone	User	Host
Run ended on port 1 (Number of wells acquired: 12)		Instrument	Run		6/12/2012 4:30:40 PM	(GMT --07:00) Pacific Standard Time	UC Davis	D8XSMGH1
Run started on port 1 (File: C:\Documents and Settings\Bioanalyzer\2012-06-12\2012-06-12_005.xad)		Instrument	Run		6/12/2012 3:49:29 PM	(GMT --07:00) Pacific Standard Time	UC Davis	D8XSMGH1
Product Number : G2938B		Instrument	Run		6/12/2012 3:49:29 PM	(GMT --07:00) Pacific Standard Time	UC Davis	D8XSMGH1
Name :		Instrument	Run		6/12/2012 3:49:29 PM	(GMT --07:00) Pacific Standard Time	UC Davis	D8XSMGH1
Vendor : Agilent Technologies		Instrument	Run		6/12/2012 3:49:29 PM	(GMT --07:00) Pacific Standard Time	UC Davis	D8XSMGH1
Serial# : DE13701086		Instrument	Run		6/12/2012 3:49:29 PM	(GMT --07:00) Pacific Standard Time	UC Davis	D8XSMGH1
Firmware : C.01.069		Instrument	Run		6/12/2012 3:49:29 PM	(GMT --07:00) Pacific Standard Time	UC Davis	D8XSMGH1
Cartridge : Electrode		Instrument	Run		6/12/2012 3:49:29 PM	(GMT --07:00) Pacific Standard Time	UC Davis	D8XSMGH1