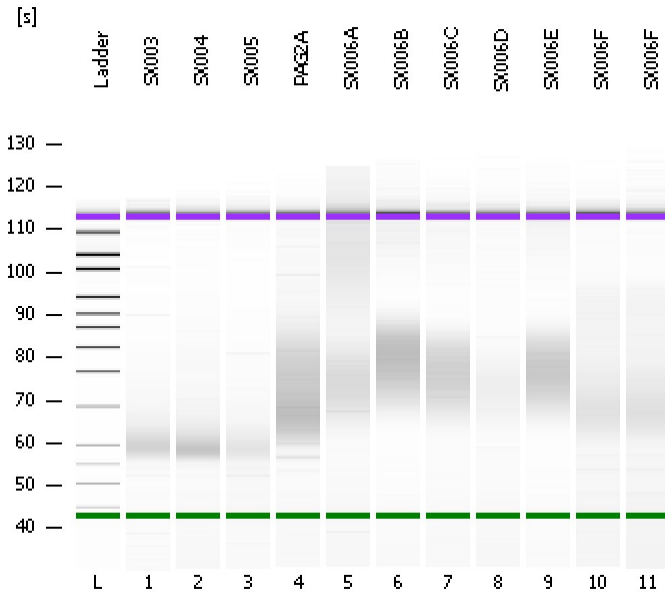


Assay Class: High Sensitivity DNA Assay
Data Path: C:\...ents and Settings\Bioanalyzer\2012-06-13\2012-06-13_002.xad

Created: 6/13/2012 11:15:35 AM
Modified: 6/13/2012 11:58:10 AM

Electrophoresis File Run Summary



Instrument Information:

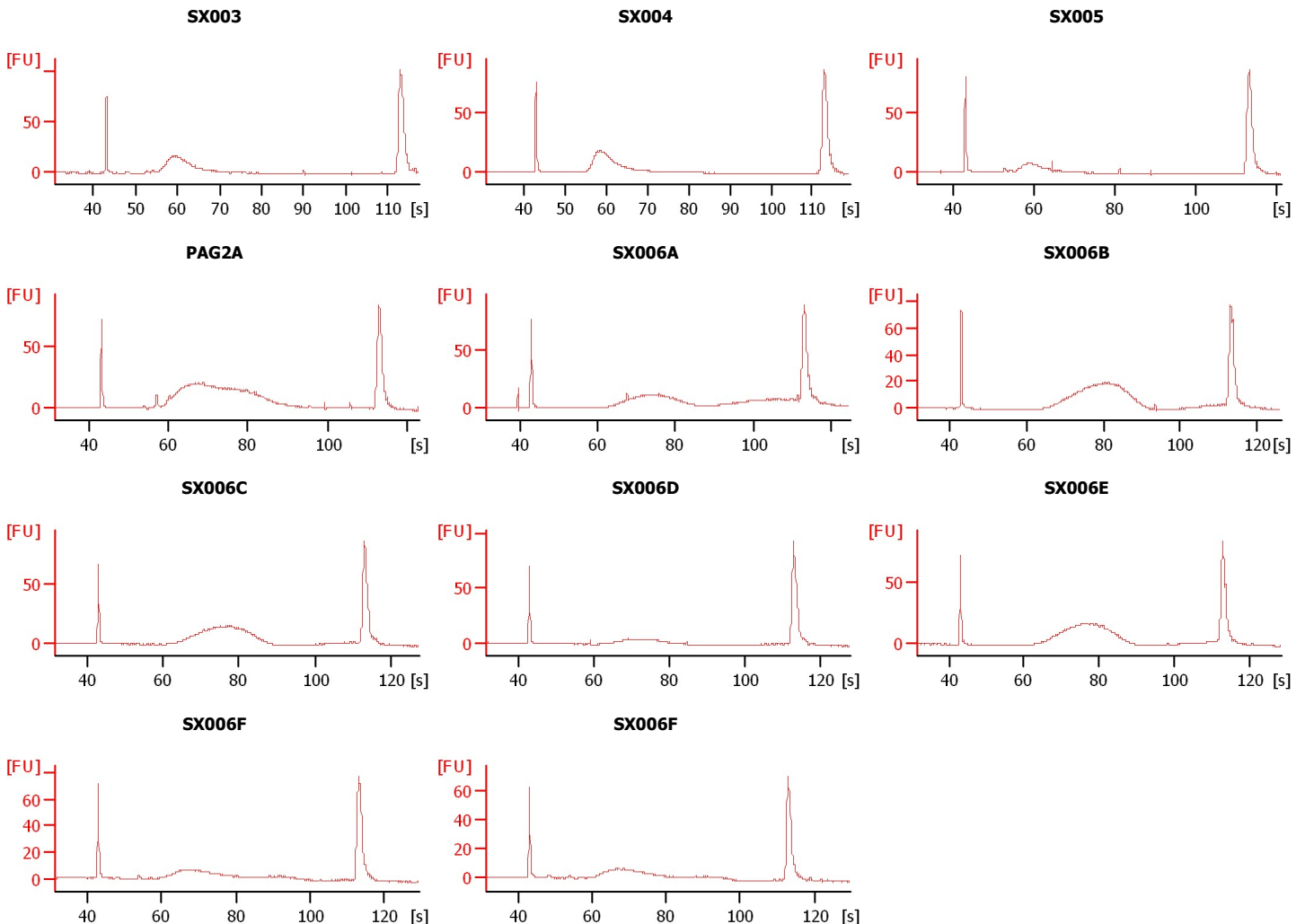
Instrument Name: DE13701086 Firmware: C.01.069
Serial#: DE13701086 Type: G2938B

Assay Information:

Assay Origin Path: C:\Program Files\Agilent\2100 bioanalyzer\2100 expert\assays\dsDNA\High Sensitivity DNA.xsy
Assay Class: High Sensitivity DNA Assay
Version: 1.03
Assay Comments: Copyright © 2003-2010 Agilent Technologies

Chip Information:

Chip Lot #:
Reagent Kit Lot #:
Chip Comments:



Assay Class: High Sensitivity DNA Assay
 Data Path: C:\...ents and Settings\Bioanalyzer\2012-06-13\2012-06-13_002.xad

Created: 6/13/2012 11:15:35 AM
 Modified: 6/13/2012 11:58:10 AM

Electrophoresis File Run Summary (Chip Summary)

| Sample Name | Sample Comment | Rest. Digest | Status | Observation | Result Label | Result Color |
|-------------|----------------|--------------------------|--------|-------------|--------------|--------------|
| SX003 | | <input type="checkbox"/> | ✓ | | | |
| SX004 | | <input type="checkbox"/> | ✓ | | | |
| SX005 | | <input type="checkbox"/> | ✓ | | | |
| PAG2A | | <input type="checkbox"/> | ✓ | | | |
| SX006A | | <input type="checkbox"/> | ✓ | | | |
| SX006B | | <input type="checkbox"/> | ✓ | | | |
| SX006C | | <input type="checkbox"/> | ✓ | | | |
| SX006D | | <input type="checkbox"/> | ✓ | | | |
| SX006E | | <input type="checkbox"/> | ✓ | | | |
| SX006F | | <input type="checkbox"/> | ✓ | | | |
| SX006F | | <input type="checkbox"/> | ✓ | | | |
| Ladder | | <input type="checkbox"/> | ✓ | | | |

Chip Lot #

Reagent Kit Lot #

Chip Comments :

Assay Class: High Sensitivity DNA Assay
 Data Path: C:\...ents and Settings\Bioanalyzer\2012-06-13\2012-06-13_002.xad

Created: 6/13/2012 11:15:35 AM
 Modified: 6/13/2012 11:58:10 AM

Electrophoresis Assay Details

General Analysis Settings

Number of Available Sample and Ladder Wells (Max.) : 12
 Minimum Visible Range [s] : 32
 Maximum Visible Range [s] : 138
 Start Analysis Time Range [s] : 33
 End Analysis Time Range [s] : 137.5
 Ladder Concentration [pg/μl] : 1950
 Uses Standard Area for Ladder Fragments
 Lower Marker Concentration [pg/μl] : 125
 Upper Marker Concentration [pg/μl] : 75
 Used Upper Marker for Quantitation
 Standard Curve Fit is Point to Point
 Show Data Aligned to Lower and Upper Marker

Integrator Settings

Integration Start Time [s] : 33.05
 Integration End Time [s] : 137
 Slope Threshold : 0.8
 Height Threshold [FU] : 5
 Area Threshold : 0.1
 Width Threshold [s] : 0.6
 Baseline Plateau [s] : 0.5

Filter Settings

Filter Width [s] : 0.5
 Polynomial Order : 4

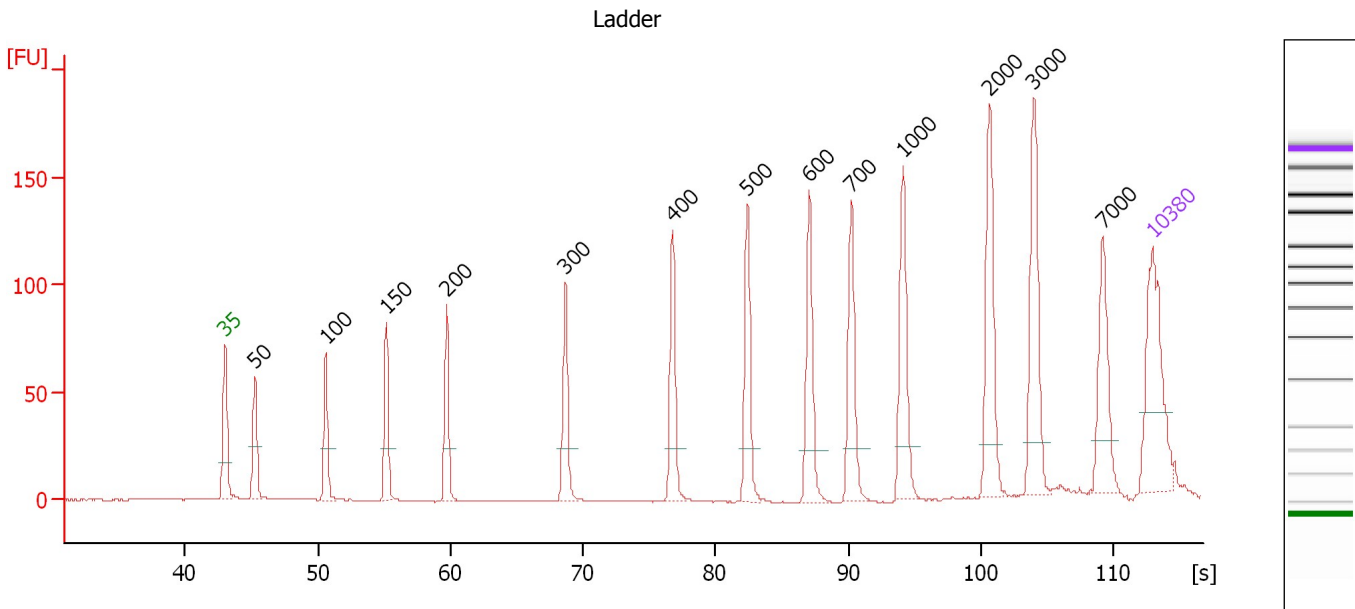
Ladder

| Ladder Peak | Size | Area |
|-------------|-------|------|
| 1 | 35 | 160 |
| 2 | 50 | 210 |
| 3 | 100 | 208 |
| 4 | 150 | 221 |
| 5 | 200 | 242 |
| 6 | 300 | 270 |
| 7 | 400 | 305 |
| 8 | 500 | 306 |
| 9 | 600 | 336 |
| 10 | 700 | 321 |
| 11 | 1000 | 366 |
| 12 | 2000 | 413 |
| 13 | 3000 | 411 |
| 14 | 7000 | 400 |
| 15 | 10380 | 214 |

Assay Class: High Sensitivity DNA Assay
 Data Path: C:\...ents and Settings\Bioanalyzer\2012-06-13\2012-06-13_002.xad

Created: 6/13/2012 11:15:35 AM
 Modified: 6/13/2012 11:58:10 AM

Electropherogram Summary



Overall Results for Ladder

Noise: 0.2

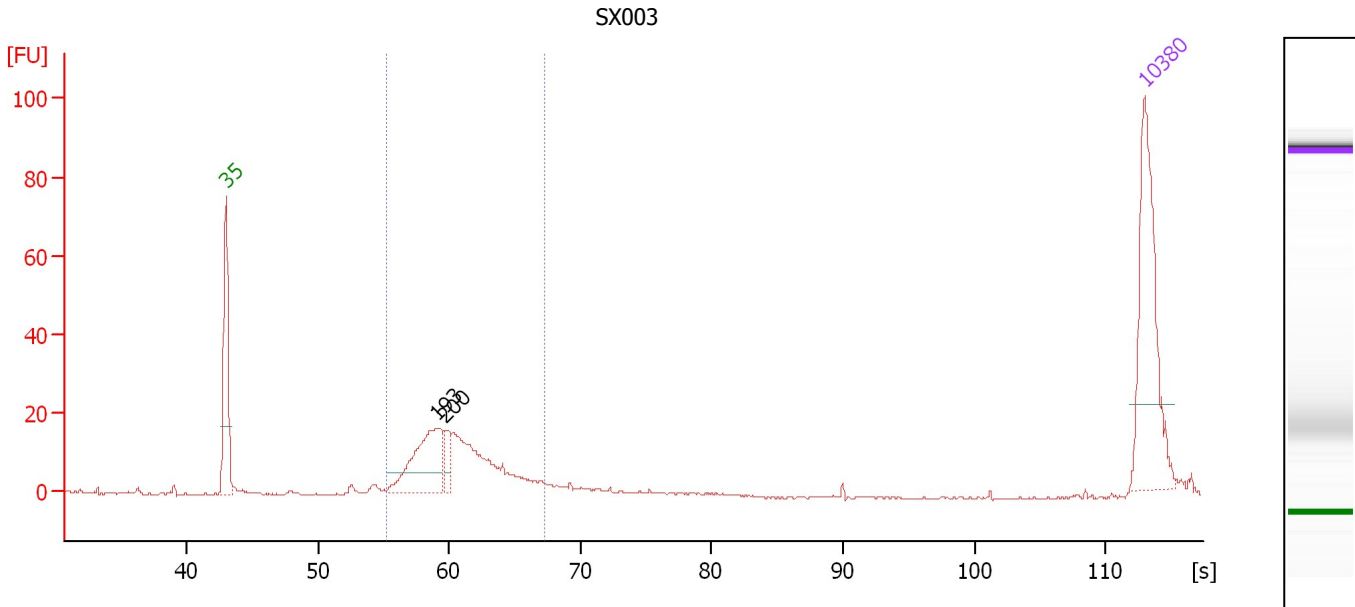
Peak table for Ladder

| Peak | Size [bp] | Conc. [pg/μl] | Molarity [pmol/l] | Observations |
|------|-----------|---------------|-------------------|--------------|
| 1 | 35 | 125.00 | 5,411.3 | Lower Marker |
| 2 | 50 | 150.00 | 4,545.5 | Ladder Peak |
| 3 | 100 | 150.00 | 2,272.7 | Ladder Peak |
| 4 | 150 | 150.00 | 1,515.2 | Ladder Peak |
| 5 | 200 | 150.00 | 1,136.4 | Ladder Peak |
| 6 | 300 | 150.00 | 757.6 | Ladder Peak |
| 7 | 400 | 150.00 | 568.2 | Ladder Peak |
| 8 | 500 | 150.00 | 454.5 | Ladder Peak |
| 9 | 600 | 150.00 | 378.8 | Ladder Peak |
| 10 | 700 | 150.00 | 324.7 | Ladder Peak |
| 11 | 1,000 | 150.00 | 227.3 | Ladder Peak |
| 12 | 2,000 | 150.00 | 113.6 | Ladder Peak |
| 13 | 3,000 | 150.00 | 75.8 | Ladder Peak |
| 14 | 7,000 | 150.00 | 32.5 | Ladder Peak |
| 15 | 10,380 | 75.00 | 10.9 | Upper Marker |

Assay Class: High Sensitivity DNA Assay
 Data Path: C:\...ents and Settings\Bioanalyzer\2012-06-13\2012-06-13_002.xad

Created: 6/13/2012 11:15:35 AM
 Modified: 6/13/2012 11:58:10 AM

Electropherogram Summary Continued ...



Overall Results for sample 1 : SX003

Number of peaks found: 2 Corr. Area 1: 175.1
 Noise: 0.2

Peak table for sample 1 : SX003

| Peak | Size [bp] | Conc. [pg/μl] | Molarity [pmol/l] | Observations |
|------|-----------|---------------|-------------------|--------------|
| 1 | 35 | 125.00 | 5,411.3 | Lower Marker |
| 2 | 193 | 79.33 | 623.4 | |
| 3 | 200 | 15.38 | 116.8 | |
| 4 | 10,380 | 75.00 | 10.9 | Upper Marker |

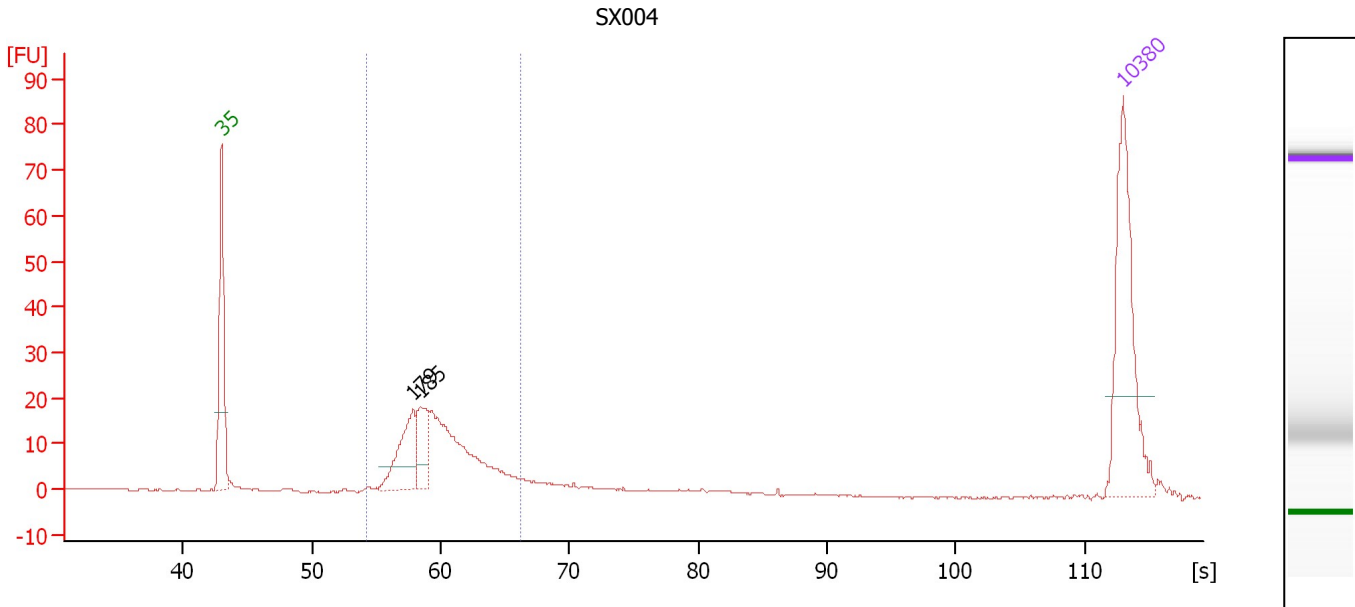
Region table for sample 1 : SX003

| From [s] | To [s] | Average Size [bp] | Molarity [pmol/l] | Conc. [pg/μl] | Corr. Area % of Total | Size distribution in CV [%] | Color |
|----------|--------|-------------------|-------------------|---------------|-----------------------|-----------------------------|-------|
| 55.24 | 67.27 | 209 | 1,324.4 | 179.18 | 175.1 92 | 13.6 | Blue |

Assay Class: High Sensitivity DNA Assay
 Data Path: C:\...ents and Settings\Bioanalyzer\2012-06-13\2012-06-13_002.xad

Created: 6/13/2012 11:15:35 AM
 Modified: 6/13/2012 11:58:10 AM

Electropherogram Summary Continued ...



Overall Results for sample 2 : SX004

Number of peaks found: 2 Corr. Area 1: 195.9
 Noise: 0.2

Peak table for sample 2 : SX004

| Peak | Size [bp] | Conc. [pg/μl] | Molarity [pmol/l] | Observations |
|------|-----------|---------------|-------------------|--------------|
| 1 | 35 | 125.00 | 5,411.3 | Lower Marker |
| 2 | 179 | 55.64 | 470.2 | |
| 3 | 185 | 35.70 | 292.0 | |
| 4 | 10,380 | 75.00 | 10.9 | Upper Marker |

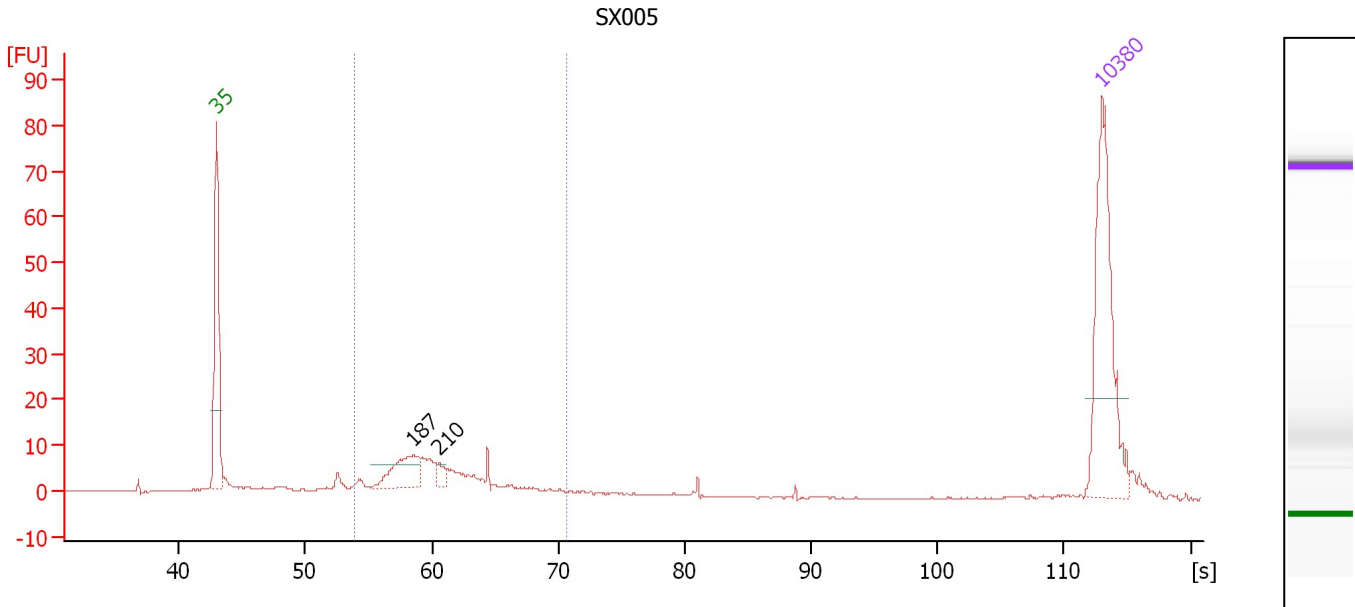
Region table for sample 2 : SX004

| From [s] | To [s] | Average Size [bp] | Molarity [pmol/l] | Conc. [pg/μl] | Corr. Area % of Total | Size distribution in CV [%] | Color |
|----------|--------|-------------------|-------------------|---------------|-----------------------|-----------------------------|-------|
| 54.19 | 66.18 | 203 | 1,698.6 | 222.65 | 195.9 81 | 13.8 | Blue |

Assay Class: High Sensitivity DNA Assay
 Data Path: C:\...ents and Settings\Bioanalyzer\2012-06-13\2012-06-13_002.xad

Created: 6/13/2012 11:15:35 AM
 Modified: 6/13/2012 11:58:10 AM

Electropherogram Summary Continued ...



Overall Results for sample 3 : SX005

Number of peaks found: 2 Corr. Area 1: 103.8
 Noise: 0.2

Peak table for sample 3 : SX005

| Peak | Size [bp] | Conc. [pg/μl] | Molarity [pmol/l] | Observations |
|------|-----------|---------------|-------------------|--------------|
| 1 | 35 | 125.00 | 5,411.3 | Lower Marker |
| 2 | 187 | 36.41 | 295.1 | |
| 3 | 210 | 5.86 | 42.4 | |
| 4 | 10,380 | 75.00 | 10.9 | Upper Marker |

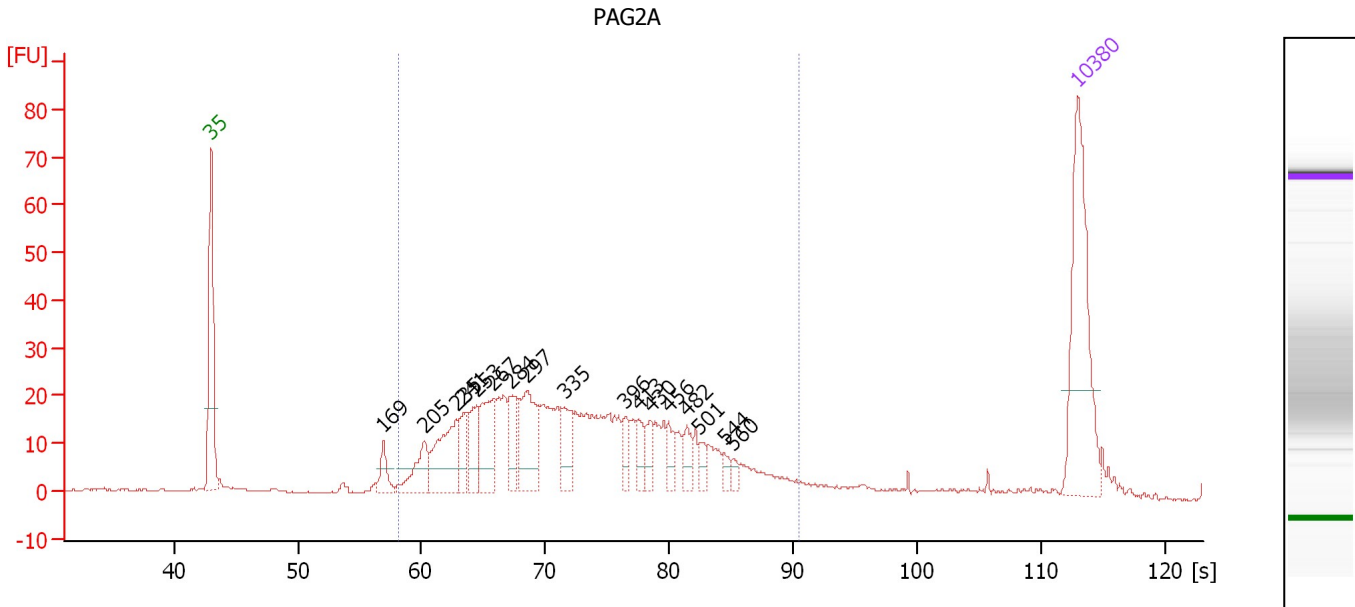
Region table for sample 3 : SX005

| From [s] | To [s] | Average Size [bp] | Molarity [pmol/l] | Conc. [pg/μl] | Corr. Area % of Total | Size distribution in CV [%] | Color |
|----------|--------|-------------------|-------------------|---------------|-----------------------|-----------------------------|-------|
| 53.95 | 70.62 | 208 | 893.1 | 117.81 | 103.8 73 | 18.4 | Blue |

Assay Class: High Sensitivity DNA Assay
 Data Path: C:\...ents and Settings\Bioanalyzer\2012-06-13\2012-06-13_002.xad

Created: 6/13/2012 11:15:35 AM
 Modified: 6/13/2012 11:58:10 AM

Electropherogram Summary Continued ...



Overall Results for sample 4 : PAG2A

Number of peaks found: 17 Corr. Area 1: 617.1
 Noise: 0.2

Peak table for sample 4 : PAG2A

| Peak | Size [bp] | Conc. [pg/μl] | Molarity [pmol/l] | Observations |
|------|-----------|---------------|-------------------|--------------|
| 1 | 35 | 125.00 | 5,411.3 | Lower Marker |
| 2 | 169 | 15.06 | 135.0 | |
| 3 | 205 | 28.07 | 207.0 | |
| 4 | 235 | 52.13 | 336.1 | |
| 5 | 241 | 17.15 | 107.9 | |
| 6 | 253 | 25.05 | 150.0 | |
| 7 | 267 | 43.36 | 245.6 | |
| 8 | 284 | 26.19 | 139.7 | |
| 9 | 297 | 49.83 | 253.8 | |
| 10 | 335 | 24.51 | 110.9 | |
| 11 | 396 | 12.00 | 45.9 | |
| 12 | 413 | 12.74 | 46.7 | |
| 13 | 430 | 10.86 | 38.2 | |
| 14 | 456 | 11.90 | 39.5 | |
| 15 | 482 | 10.38 | 32.6 | |
| 16 | 501 | 7.66 | 23.2 | |
| 17 | 544 | 5.25 | 14.6 | |
| 18 | 560 | 4.16 | 11.3 | |
| 19 | 10,380 | 75.00 | 10.9 | Upper Marker |

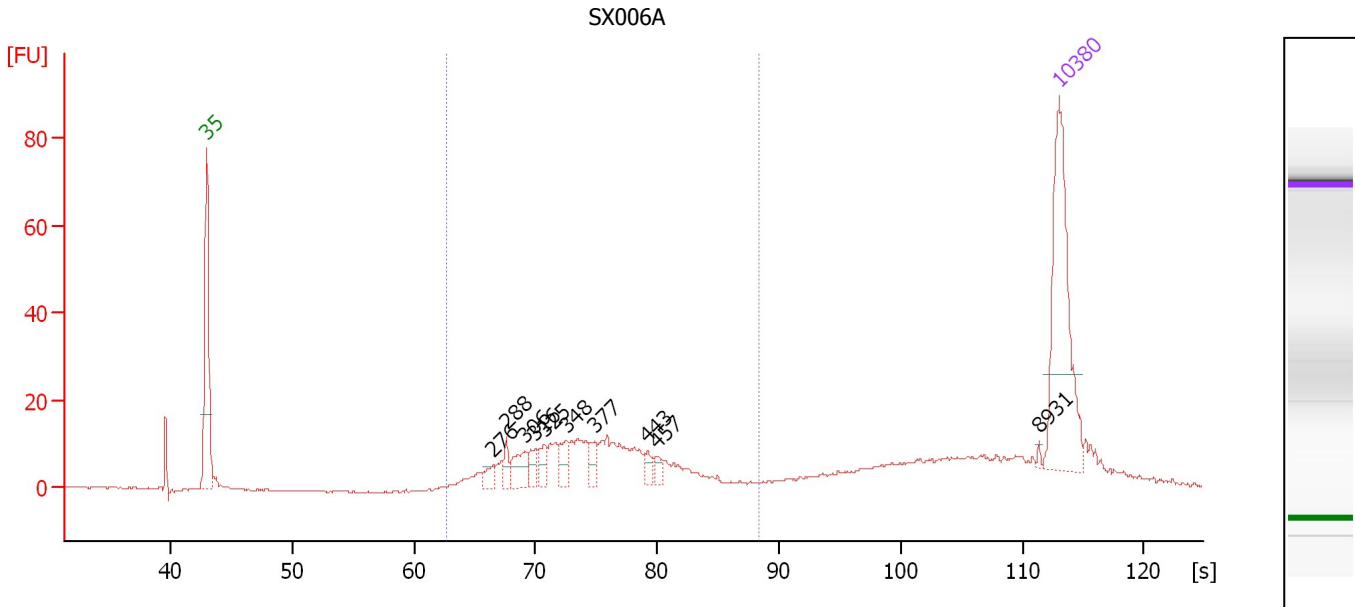
Region table for sample 4 : PAG2A

| From [s] | To [s] | Average Size [bp] | Molarity [pmol/l] | Conc. [pg/μl] | Corr. Area % of Total | Size distribution in CV [%] | Color |
|----------|--------|-------------------|-------------------|---------------|-----------------------|-----------------------------|-------|
| 58.20 | 90.55 | 361 | 3,012.4 | 633.01 | 617.1 89 | 30.5 | ■ |

Assay Class: High Sensitivity DNA Assay
 Data Path: C:\...ents and Settings\Bioanalyzer\2012-06-13\2012-06-13_002.xad

Created: 6/13/2012 11:15:35 AM
 Modified: 6/13/2012 11:58:10 AM

Electropherogram Summary Continued ...



Overall Results for sample 5 : SX006A

Number of peaks found: 10 Corr. Area 1: 200.7
 Noise: 0.2

Peak table for sample 5 : SX006A

| Peak | Size [bp] | Conc. [pg/μl] | Molarity [pmol/l] | Observations |
|------|-----------|---------------|-------------------|--------------|
| 1 | 35 | 125.00 | 5,411.3 | Lower Marker |
| 2 | 276 | 7.60 | 41.7 | |
| 3 | 288 | 8.14 | 42.8 | |
| 4 | 306 | 16.89 | 83.5 | |
| 5 | 316 | 9.73 | 46.6 | |
| 6 | 325 | 9.10 | 42.4 | |
| 7 | 348 | 12.58 | 54.7 | |
| 8 | 377 | 8.67 | 34.9 | |
| 9 | 443 | 5.56 | 19.0 | |
| 10 | 457 | 4.09 | 13.6 | |
| 11 | 8,931 | 0.97 | 0.2 | |
| 12 | 10,380 | 75.00 | 10.9 | Upper Marker |

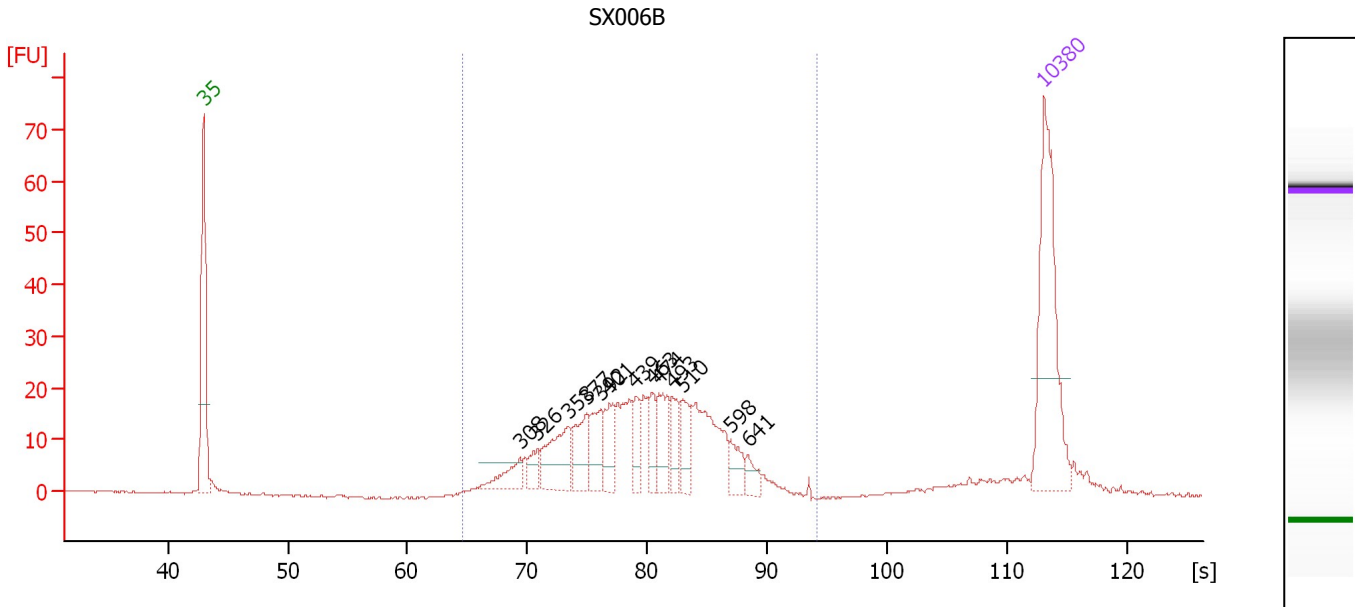
Region table for sample 5 : SX006A

| From [s] | To [s] | Average Size [bp] | Molarity [pmol/l] | Conc. [pg/μl] | Corr. Area % of Total | Size distribution in CV [%] | Color |
|----------|--------|-------------------|-------------------|---------------|-----------------------|-----------------------------|-------|
| 62.75 | 88.28 | 376 | 822.6 | 194.20 | 200.7 61 | 19.0 | Blue |

Assay Class: High Sensitivity DNA Assay
 Data Path: C:\...ents and Settings\Bioanalyzer\2012-06-13\2012-06-13_002.xad

Created: 6/13/2012 11:15:35 AM
 Modified: 6/13/2012 11:58:10 AM

Electropherogram Summary Continued ...



Overall Results for sample 6 : SX006B

Number of peaks found: 13 Corr. Area 1: 383.6
 Noise: 0.2

Peak table for sample 6 : SX006B

| Peak | Size [bp] | Conc. [pg/μl] | Molarity [pmol/l] | Observations |
|------|-----------|---------------|-------------------|--------------|
| 1 | 35 | 125.00 | 5,411.3 | Lower Marker |
| 2 | 308 | 16.60 | 81.6 | |
| 3 | 326 | 11.73 | 54.5 | |
| 4 | 358 | 39.55 | 167.4 | |
| 5 | 377 | 26.84 | 108.0 | |
| 6 | 392 | 22.76 | 88.0 | |
| 7 | 401 | 21.06 | 79.7 | |
| 8 | 439 | 17.23 | 59.4 | |
| 9 | 463 | 15.35 | 50.2 | |
| 10 | 474 | 22.91 | 73.3 | |
| 11 | 493 | 18.76 | 57.6 | |
| 12 | 510 | 17.80 | 52.9 | |
| 13 | 598 | 12.90 | 32.7 | |
| 14 | 641 | 8.74 | 20.7 | |
| 15 | 10,380 | 75.00 | 10.9 | Upper Marker |

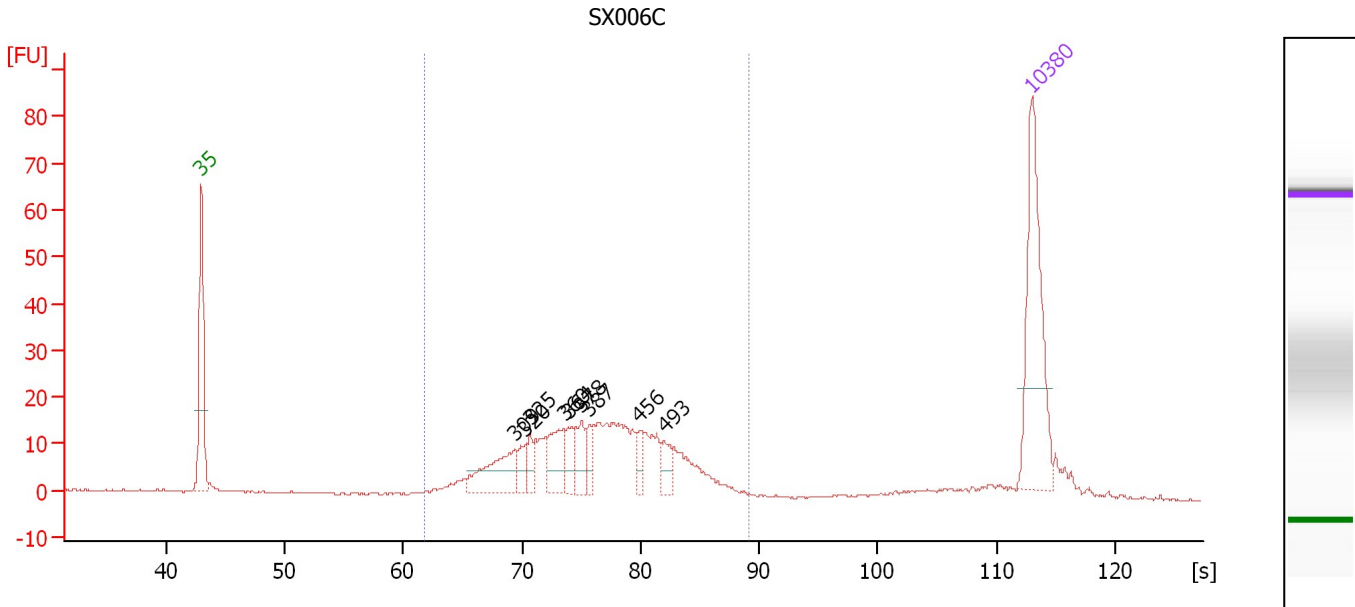
Region table for sample 6 : SX006B

| From [s] | To [s] | Average Size [bp] | Molarity [pmol/l] | Conc. [pg/μl] | Corr. Area % of Total | Size distribution in CV [%] | Color |
|----------|--------|-------------------|-------------------|---------------|-----------------------|-----------------------------|-------|
| 64.51 | 94.16 | 456 | 1,388.6 | 391.31 | 383.6 91 | 21.6 | Blue |

Assay Class: High Sensitivity DNA Assay
 Data Path: C:\...ents and Settings\Bioanalyzer\2012-06-13\2012-06-13_002.xad

Created: 6/13/2012 11:15:35 AM
 Modified: 6/13/2012 11:58:10 AM

Electropherogram Summary Continued ...



Overall Results for sample 7 : SX006C

Number of peaks found: 9 Corr. Area 1: 319.6
 Noise: 0.2

Peak table for sample 7 : SX006C

| Peak | Size [bp] | Conc. [pg/μl] | Molarity [pmol/l] | Observations |
|------|-----------|---------------|-------------------|--------------|
| 1 | 35 | 125.00 | 5,411.3 | Lower Marker |
| 2 | 309 | 46.22 | 226.5 | |
| 3 | 320 | 12.72 | 60.2 | |
| 4 | 325 | 11.07 | 51.6 | |
| 5 | 360 | 28.88 | 121.5 | |
| 6 | 364 | 15.21 | 63.2 | |
| 7 | 378 | 18.91 | 75.7 | |
| 8 | 387 | 12.11 | 47.5 | |
| 9 | 456 | 10.47 | 34.8 | |
| 10 | 493 | 13.01 | 40.0 | |
| 11 | 10,380 | 75.00 | 10.9 | Upper Marker |

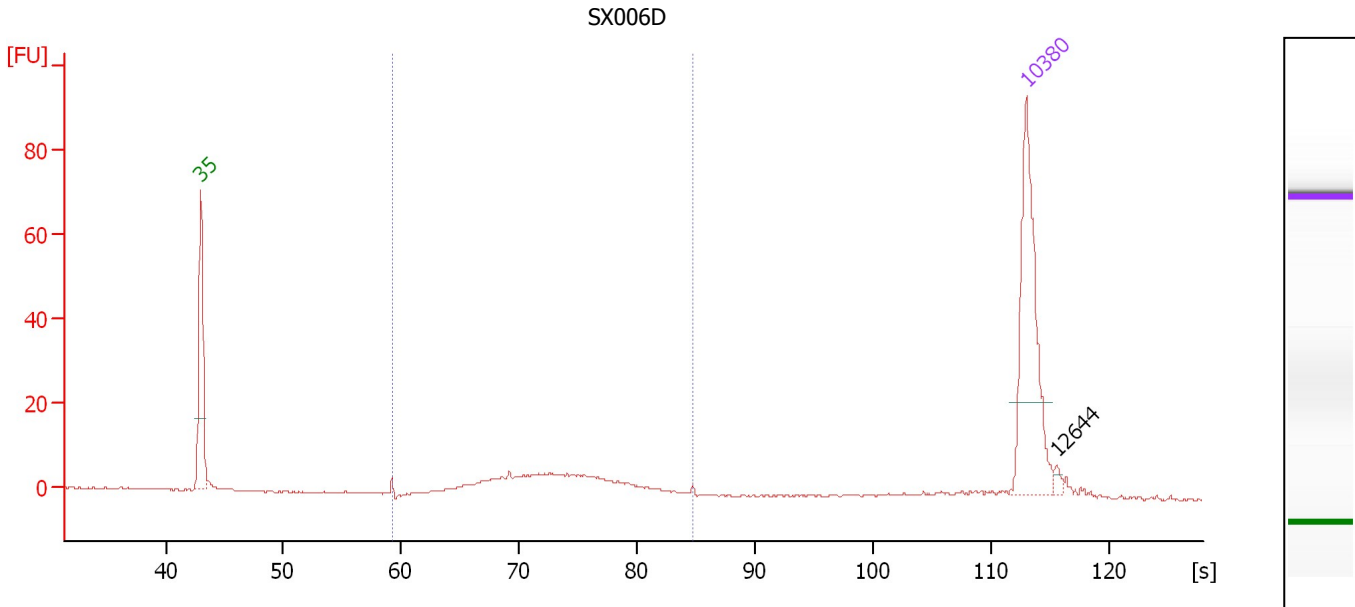
Region table for sample 7 : SX006C

| From [s] | To [s] | Average Size [bp] | Molarity [pmol/l] | Conc. [pg/μl] | Corr. Area | % of Total | Size distribution in CV [%] | Color |
|----------|--------|-------------------|-------------------|---------------|------------|------------|-----------------------------|-------|
| 61.78 | 89.10 | 402 | 1,353.4 | 338.25 | 319.6 | 89 | 20.5 | Blue |

Assay Class: High Sensitivity DNA Assay
 Data Path: C:\...ents and Settings\Bioanalyzer\2012-06-13\2012-06-13_002.xad

Created: 6/13/2012 11:15:35 AM
 Modified: 6/13/2012 11:58:10 AM

Electropherogram Summary Continued ...



Overall Results for sample 8 : SX006D

Number of peaks found: 1 Corr. Area 1: 80.5
 Noise: 0.2

Peak table for sample 8 : SX006D

| Peak | Size [bp] | Conc. [pg/μl] | Molarity [pmol/l] | Observations |
|------|-----------|---------------|-------------------|--------------|
| 1 | 35 | 125.00 | 5,411.3 | Lower Marker |
| 2 | 10,380 | 75.00 | 10.9 | Upper Marker |
| 3 | 12,644 | 0.00 | 0.0 | |

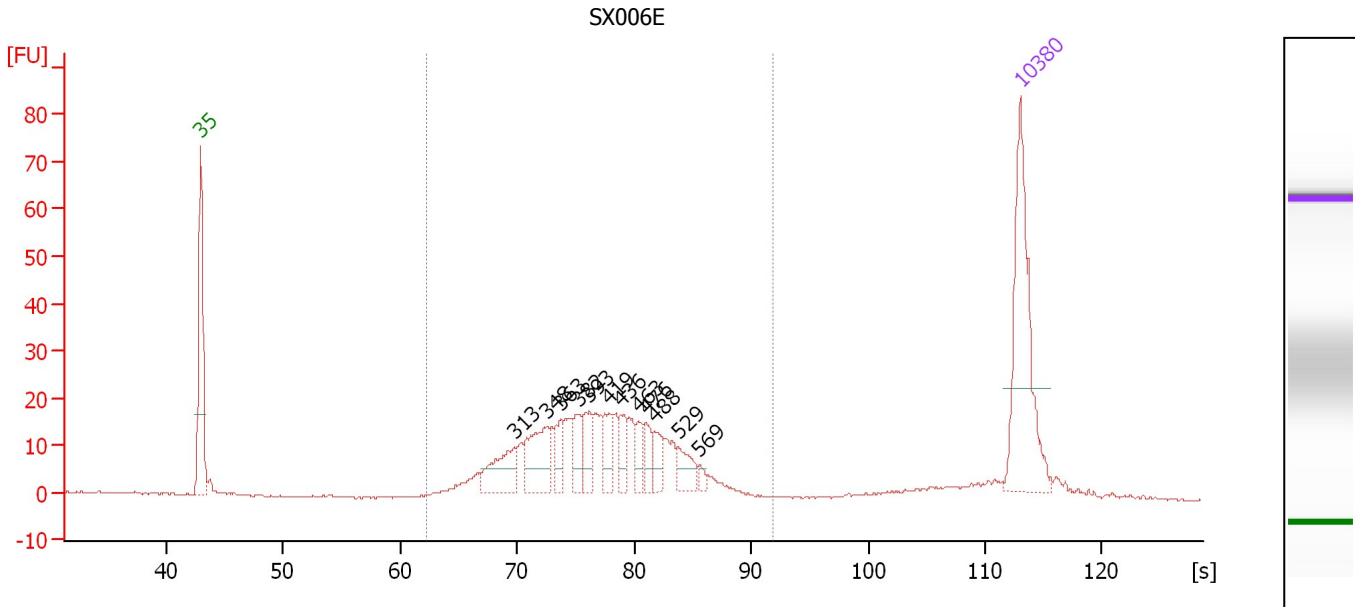
Region table for sample 8 : SX006D

| From [s] | To [s] | Average Size [bp] | Molarity [pmol/l] | Conc. [pg/μl] | Corr. Area % of Total | Size distribution in CV [%] | Color | |
|----------|--------|-------------------|-------------------|---------------|-----------------------|-----------------------------|-------|------|
| 59.29 | 84.77 | 361 | 326.0 | 74.41 | 80.5 | 72 | 17.8 | Blue |

Assay Class: High Sensitivity DNA Assay
 Data Path: C:\...ents and Settings\Bioanalyzer\2012-06-13\2012-06-13_002.xad

Created: 6/13/2012 11:15:35 AM
 Modified: 6/13/2012 11:58:10 AM

Electropherogram Summary Continued ...



Overall Results for sample 9 : SX006E

Number of peaks found: 12 Corr. Area 1: 361.0
 Noise: 0.2

Peak table for sample 9 : SX006E

| Peak | Size [bp] | Conc. [pg/μl] | Molarity [pmol/l] | Observations |
|------|-----------|---------------|-------------------|--------------|
| 1 | 35 | 125.00 | 5,411.3 | Lower Marker |
| 2 | 313 | 34.42 | 166.6 | |
| 3 | 348 | 40.37 | 176.0 | |
| 4 | 363 | 14.32 | 59.8 | |
| 5 | 382 | 18.10 | 71.8 | |
| 6 | 393 | 19.24 | 74.2 | |
| 7 | 419 | 16.52 | 59.7 | |
| 8 | 436 | 14.06 | 48.8 | |
| 9 | 463 | 11.71 | 38.3 | |
| 10 | 476 | 12.49 | 39.7 | |
| 11 | 488 | 13.03 | 40.5 | |
| 12 | 529 | 15.66 | 44.8 | |
| 13 | 569 | 3.29 | 8.8 | |
| 14 | 10,380 | 75.00 | 10.9 | Upper Marker |

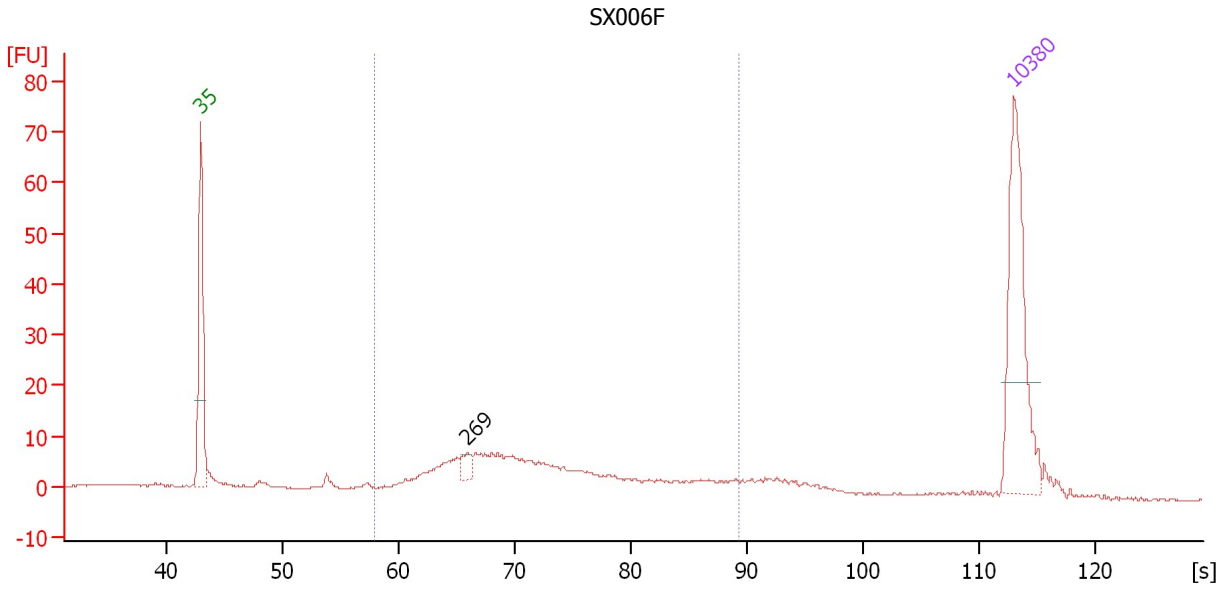
Region table for sample 9 : SX006E

| From [s] | To [s] | Average Size [bp] | Molarity [pmol/l] | Conc. [pg/μl] | Corr. Area | % of Total | Size distribution in CV [%] | Color |
|----------|--------|-------------------|-------------------|---------------|------------|------------|-----------------------------|-------|
| 62.26 | 91.84 | 413 | 1,418.9 | 364.24 | 361.0 | 89 | 20.8 | Blue |

Assay Class: High Sensitivity DNA Assay
 Data Path: C:\...ents and Settings\Bioanalyzer\2012-06-13\2012-06-13_002.xad

Created: 6/13/2012 11:15:35 AM
 Modified: 6/13/2012 11:58:10 AM

Electropherogram Summary Continued ...



Overall Results for sample 10 : SX006F

Number of peaks found: 1 Corr. Area 1: 175.6
 Noise: 0.2

Peak table for sample 10 : SX006F

| Peak | Size [bp] | Conc. [pg/μl] | Molarity [pmol/l] | Observations |
|------|-----------|---------------|-------------------|--------------|
| 1 | 35 | 125.00 | 5,411.3 | Lower Marker |
| 2 | 269 | 8.69 | 48.9 | |
| 3 | 10,380 | 75.00 | 10.9 | Upper Marker |

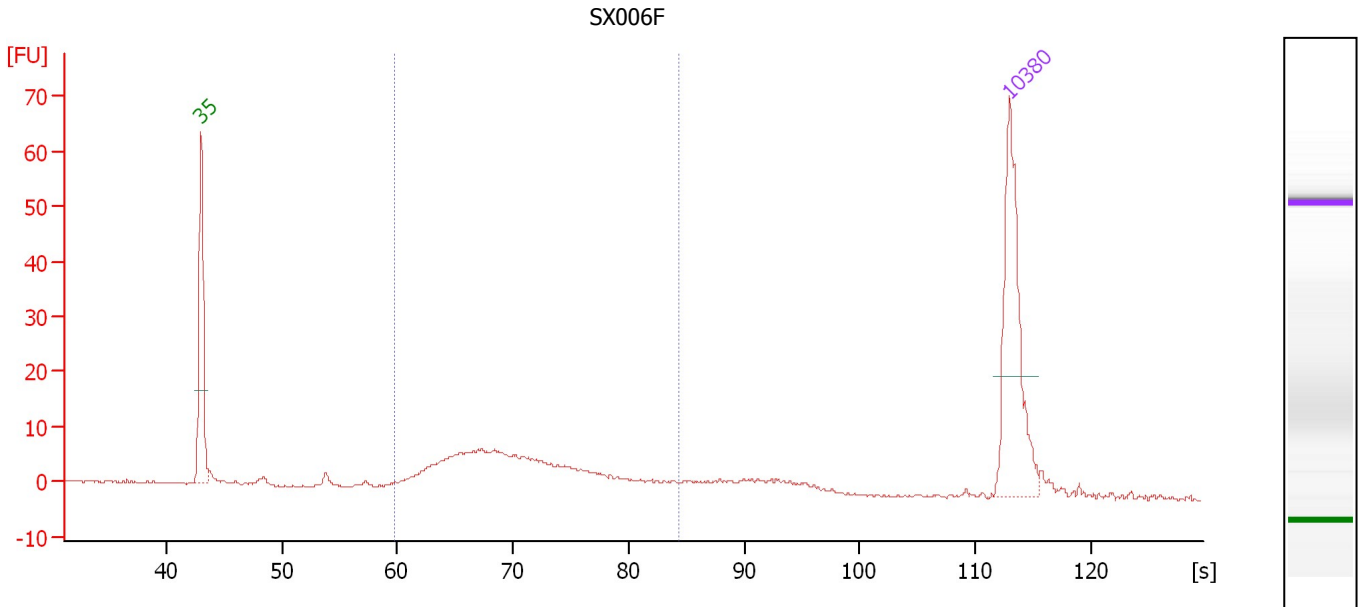
Region table for sample 10 : SX006F

| From [s] | To [s] | Average Size [bp] | Molarity [pmol/l] | Conc. [pg/μl] | Corr. Area | % of Total | Size distribution in CV [%] | Color |
|----------|--------|-------------------|-------------------|---------------|------------|------------|-----------------------------|-------|
| 57.93 | 89.36 | 360 | 875.5 | 184.20 | 175.6 | 73 | 31.2 | Blue |

Assay Class: High Sensitivity DNA Assay
 Data Path: C:\...ents and Settings\Bioanalyzer\2012-06-13\2012-06-13_002.xad

Created: 6/13/2012 11:15:35 AM
 Modified: 6/13/2012 11:58:10 AM

Electropherogram Summary Continued ...



Overall Results for sample 11 : SX006F

Number of peaks found: 0 Corr. Area 1: 137.7
 Noise: 0.2

Peak table for sample 11 : SX006F

| Peak | Size [bp] | Conc. [pg/μl] | Molarity [pmol/l] | Observations |
|------|-----------|---------------|-------------------|--------------|
| 1 | 35 | 125.00 | 5,411.3 | Lower Marker |
| 2 | 10,380 | 75.00 | 10.9 | Upper Marker |

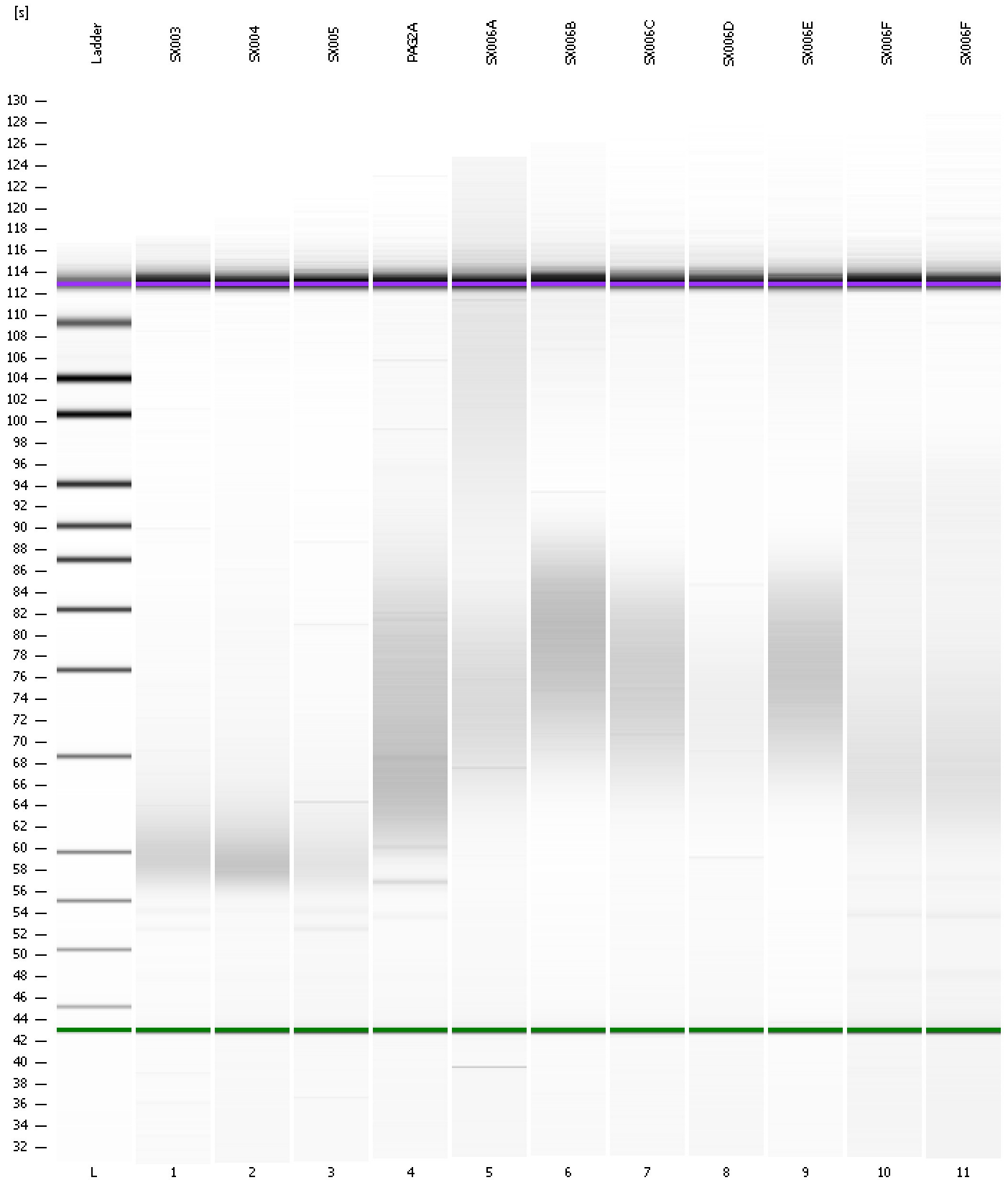
Region table for sample 11 : SX006F

| From [s] | To [s] | Average Size [bp] | Molarity [pmol/l] | Conc. [pg/μl] | Corr. Area | % of Total | Size distribution in CV [%] | Color |
|----------|--------|-------------------|-------------------|---------------|------------|------------|-----------------------------|-------|
| 59.73 | 84.35 | 328 | 815.4 | 165.39 | 137.7 | 74 | 22.8 | Blue |

Assay Class: High Sensitivity DNA Assay
Data Path: C:\...ents and Settings\Bioanalyzer\2012-06-13\2012-06-13_002.xad

Created: 6/13/2012 11:15:35 AM
Modified: 6/13/2012 11:58:10 AM

Gel Image



Assay Class: High Sensitivity DNA Assay
 Data Path: C:\...ents and Settings\Bioanalyzer\2012-06-13\2012-06-13_002.xad

Created: 6/13/2012 11:15:35 AM
 Modified: 6/13/2012 11:58:10 AM

Run Logbook

| Description | Number | Source | Category | Sub Category | Time | Time Zone | User | Host |
|---|--------|------------|----------|--------------|-----------------------|-------------------------------------|----------|----------|
| Run ended on port 1 (Number of wells acquired: 12) | | Instrument | Run | | 6/13/2012 11:56:54 AM | (GMT --07:00) Pacific Standard Time | UC Davis | D8XSMGH1 |
| Run started on port 1 (File: C:\Documents and Settings\Bioanalyzer\2012-06-13\2012-06-13_002.xad) | | Instrument | Run | | 6/13/2012 11:15:41 AM | (GMT --07:00) Pacific Standard Time | UC Davis | D8XSMGH1 |
| Product Number : G2938B | | Instrument | Run | | 6/13/2012 11:15:41 AM | (GMT --07:00) Pacific Standard Time | UC Davis | D8XSMGH1 |
| Name : | | Instrument | Run | | 6/13/2012 11:15:41 AM | (GMT --07:00) Pacific Standard Time | UC Davis | D8XSMGH1 |
| Vendor : Agilent Technologies | | Instrument | Run | | 6/13/2012 11:15:41 AM | (GMT --07:00) Pacific Standard Time | UC Davis | D8XSMGH1 |
| Serial# : DE13701086 | | Instrument | Run | | 6/13/2012 11:15:41 AM | (GMT --07:00) Pacific Standard Time | UC Davis | D8XSMGH1 |
| Firmware : C.01.069 | | Instrument | Run | | 6/13/2012 11:15:41 AM | (GMT --07:00) Pacific Standard Time | UC Davis | D8XSMGH1 |
| Cartridge : Electrode | | Instrument | Run | | 6/13/2012 11:15:41 AM | (GMT --07:00) Pacific Standard Time | UC Davis | D8XSMGH1 |