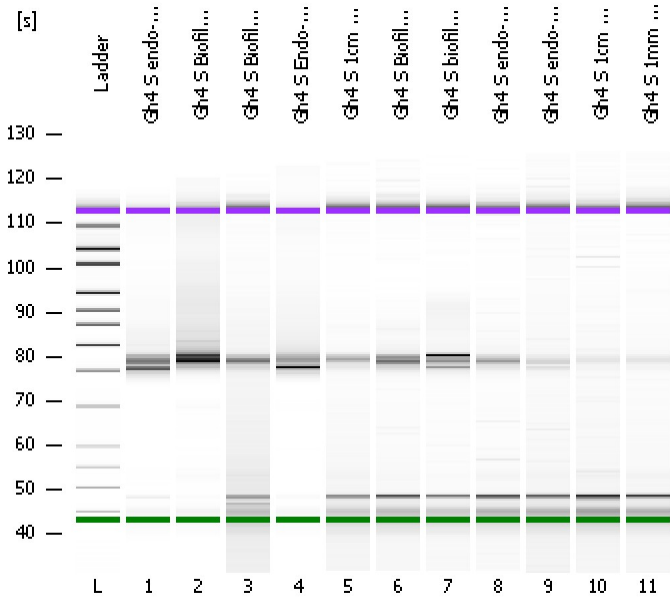


Assay Class: High Sensitivity DNA Assay
Data Path: C:\...ents and Settings\Bioanalyzer\2012-06-14\2012-06-14_003.xad

Created: 6/14/2012 10:11:32 AM
Modified: 6/14/2012 10:54:41 AM

Electrophoresis File Run Summary



Instrument Information:

Instrument Name: DE13701086 Firmware: C.01.069
Serial#: DE13701086 Type: G2938B

Assay Information:

Assay Origin Path: C:\Program Files\Agilent\2100 bioanalyzer\2100 expert\assays\dsDNA\High Sensitivity DNA.xsy
Assay Class: High Sensitivity DNA Assay
Version: 1.03
Assay Comments: Copyright © 2003-2010 Agilent Technologies

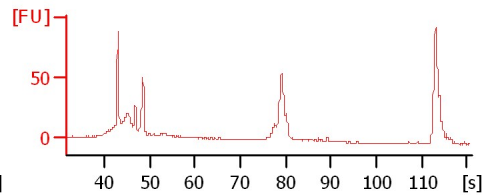
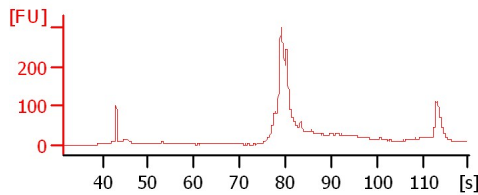
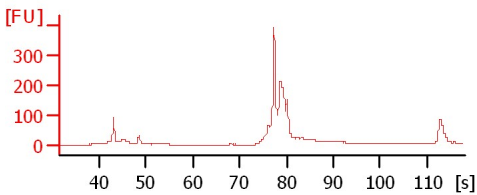
Chip Information:

Chip Lot #:
Reagent Kit Lot #:
Chip Comments:

Gh4 S endo-2 pl6

Gh4 S Biofilm1 pl8

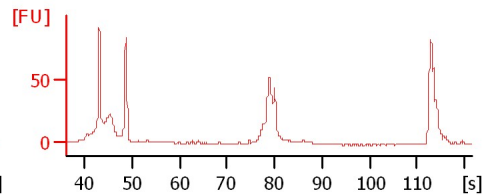
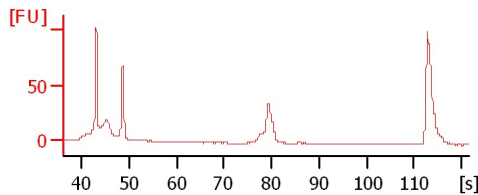
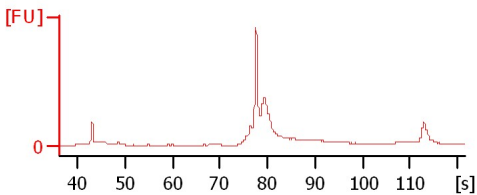
Gh4 S Biofilm2 pl8



Gh4 S Endo-2 pl8

Gh4 S 1cm pl10

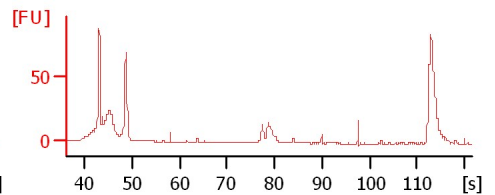
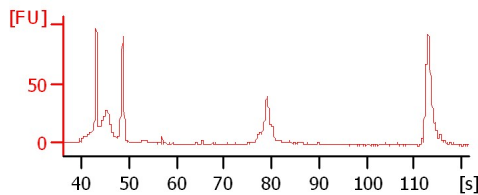
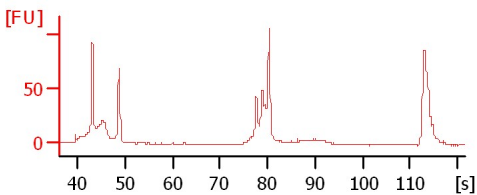
Gh4 S Biofilm-1 pl14



Gh4 S biofilm-2 pl14

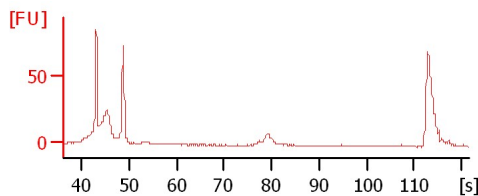
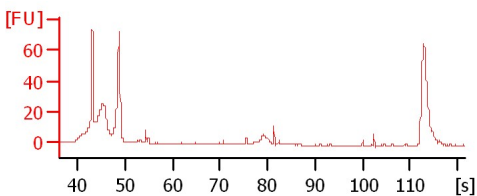
Gh4 S endo-1 pl14

Gh4 S endo-2 pl14



Gh4 S 1cm pl12

Gh4 S 1mm pl12



Assay Class: High Sensitivity DNA Assay
 Data Path: C:\...ents and Settings\Bioanalyzer\2012-06-14\2012-06-14_003.xad

Created: 6/14/2012 10:11:32 AM
 Modified: 6/14/2012 10:54:41 AM

Electrophoresis File Run Summary (Chip Summary)

Sample Name	Sample Comment	Rest. Digest	Status	Observation	Result Label	Result Color
Gh4 S endo-2 pl6		<input type="checkbox"/>	✓			
Gh4 S Biofilm1 pl8		<input type="checkbox"/>	✓			
Gh4 S Biofilm2 pl8		<input type="checkbox"/>	✓			
Gh4 S Endo-2 pl8		<input type="checkbox"/>	✓			
Gh4 S 1cm pl10		<input type="checkbox"/>	✓			
Gh4 S Biofilm-1 pl14		<input type="checkbox"/>	✓			
Gh4 S biofilm-2 pl14		<input type="checkbox"/>	✓			
Gh4 S endo-1 pl14		<input type="checkbox"/>	✓			
Gh4 S endo-2 pl14		<input type="checkbox"/>	✓			
Gh4 S 1cm pl12		<input type="checkbox"/>	✓			
Gh4 S 1mm pl12		<input type="checkbox"/>	✓			
Ladder		<input type="checkbox"/>	✓			

Chip Lot #

Reagent Kit Lot #

Chip Comments :

Assay Class: High Sensitivity DNA Assay
Data Path: C:\...ents and Settings\Bioanalyzer\2012-06-14\2012-06-14_003.xad

Created: 6/14/2012 10:11:32 AM
Modified: 6/14/2012 10:54:41 AM

Electrophoresis Assay Details

General Analysis Settings

Number of Available Sample and Ladder Wells (Max.) : 12
Minimum Visible Range [s] : 32
Maximum Visible Range [s] : 138
Start Analysis Time Range [s] : 33
End Analysis Time Range [s] : 137.5
Ladder Concentration [pg/μl] : 1950
Uses Standard Area for Ladder Fragments
Lower Marker Concentration [pg/μl] : 125
Upper Marker Concentration [pg/μl] : 75
Used Upper Marker for Quantitation
Standard Curve Fit is Point to Point
Show Data Aligned to Lower and Upper Marker

Integrator Settings

Integration Start Time [s] : 33.05
Integration End Time [s] : 137
Slope Threshold : 0.8
Height Threshold [FU] : 20
Area Threshold : 0.1
Width Threshold [s] : 0.6
Baseline Plateau [s] : 0.5

Filter Settings

Filter Width [s] : 0.5
Polynomial Order : 4

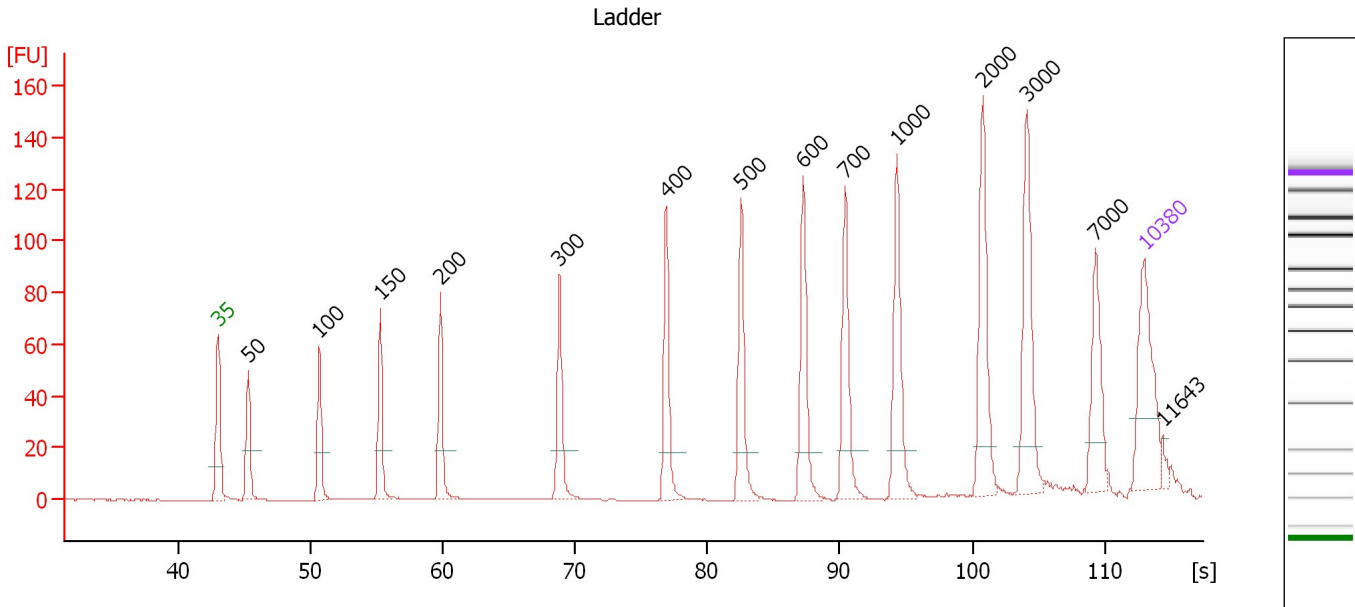
Ladder

Ladder Peak	Size	Area
1	35	160
2	50	210
3	100	208
4	150	221
5	200	242
6	300	270
7	400	305
8	500	306
9	600	336
10	700	321
11	1000	366
12	2000	413
13	3000	411
14	7000	400
15	10380	214

Assay Class: High Sensitivity DNA Assay
 Data Path: C:\...ents and Settings\Bioanalyzer\2012-06-14\2012-06-14_003.xad

Created: 6/14/2012 10:11:32 AM
 Modified: 6/14/2012 10:54:41 AM

Electropherogram Summary



Overall Results for Ladder

Noise: 0.2

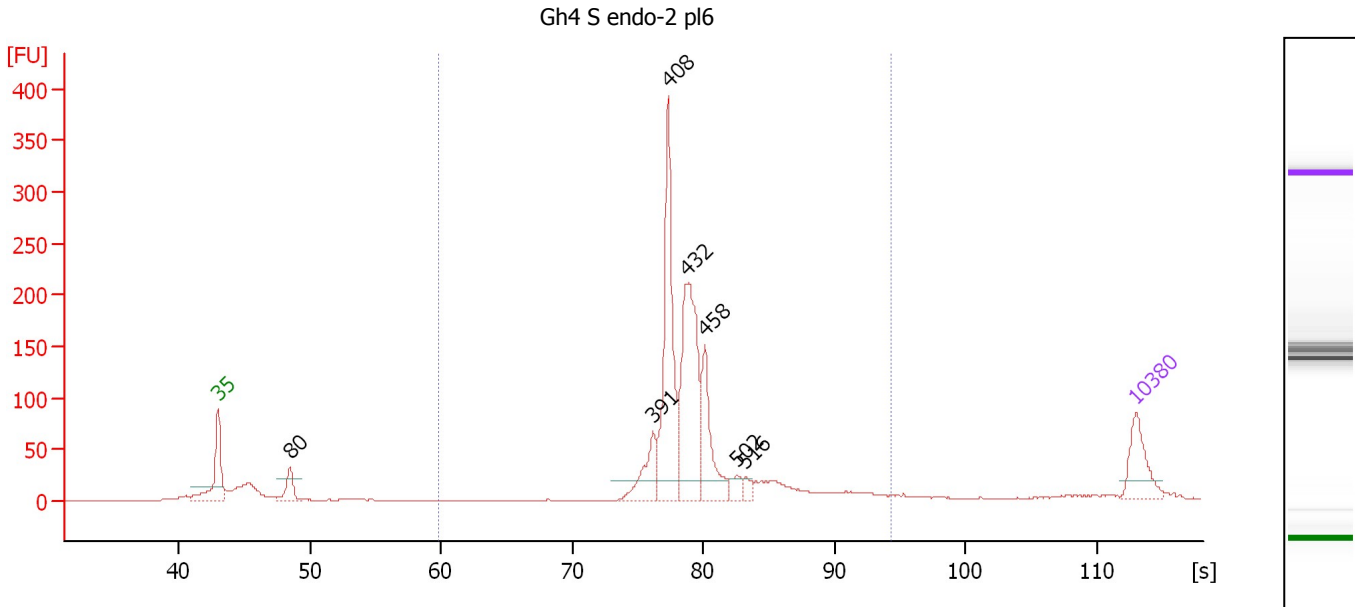
Peak table for Ladder

Peak	Size [bp]	Conc. [pg/µl]	Molarity [pmol/l]	Observations
1	35	125.00	5,411.3	Lower Marker
2	50	150.00	4,545.5	Ladder Peak
3	100	150.00	2,272.7	Ladder Peak
4	150	150.00	1,515.2	Ladder Peak
5	200	150.00	1,136.4	Ladder Peak
6	300	150.00	757.6	Ladder Peak
7	400	150.00	568.2	Ladder Peak
8	500	150.00	454.5	Ladder Peak
9	600	150.00	378.8	Ladder Peak
10	700	150.00	324.7	Ladder Peak
11	1,000	150.00	227.3	Ladder Peak
12	2,000	150.00	113.6	Ladder Peak
13	3,000	150.00	75.8	Ladder Peak
14	7,000	150.00	32.5	Ladder Peak
15	10,380	75.00	10.9	Upper Marker
16	11,643	0.00	0.0	

Assay Class: High Sensitivity DNA Assay
 Data Path: C:\...ents and Settings\Bioanalyzer\2012-06-14\2012-06-14_003.xad

Created: 6/14/2012 10:11:32 AM
 Modified: 6/14/2012 10:54:41 AM

Electropherogram Summary Continued ...



Overall Results for sample 1 : Gh4 S endo-2 pl6

Number of peaks found: 7 Corr. Area 1: 1,215.6
 Noise: 0.2

Peak table for sample 1 : Gh4 S endo-2 pl6

Peak	Size [bp]	Conc. [pg/μl]	Molarity [pmol/l]	Observations
1	35	125.00	5,411.3	Lower Marker
2	80	62.15	1,180.1	
3	391	102.29	396.1	
4	408	384.14	1,427.2	
5	432	386.65	1,354.6	
6	458	166.28	550.2	
7	502	27.94	84.4	
8	516	19.27	56.6	
9	10,380	75.00	10.9	Upper Marker

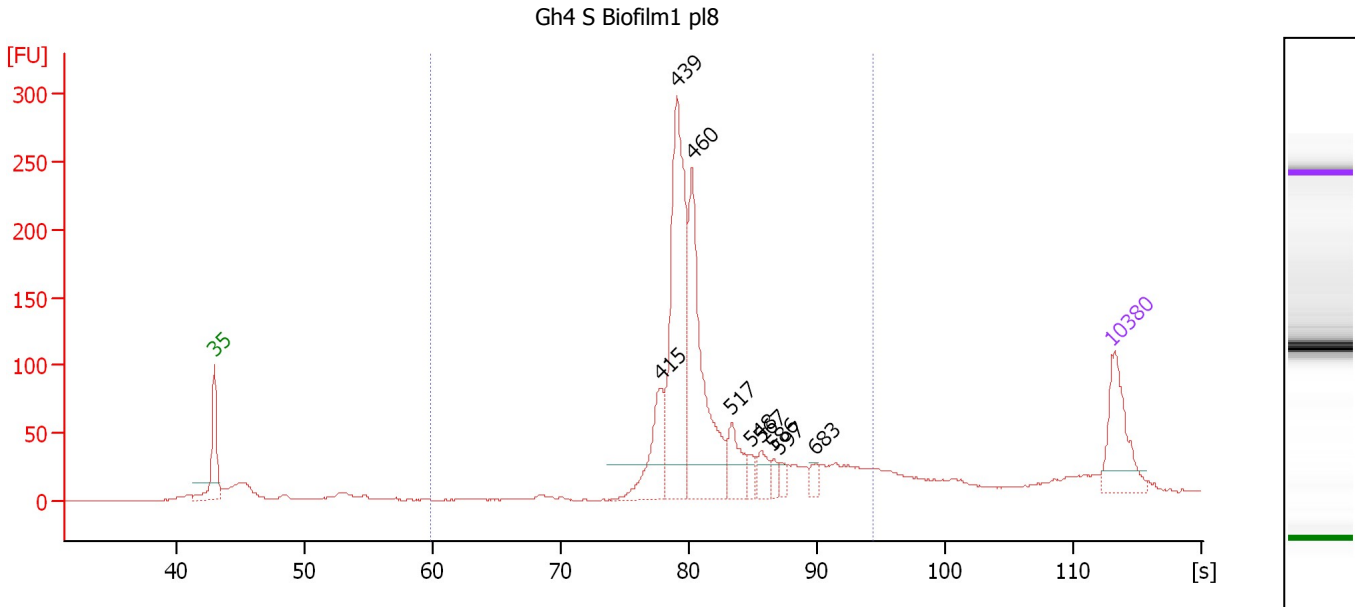
Region table for sample 1 : Gh4 S endo-2 pl6

From [s]	To [s]	Average Size [bp]	Molarity [pmol/l]	Conc. [pg/μl]	Corr. Area % of Total	Size distribution in CV [%]	Color
59.80	94.29	451	4,033.8	1,172.27	1,215.6 86	17.4	Blue

Assay Class: High Sensitivity DNA Assay
 Data Path: C:\...ents and Settings\Bioanalyzer\2012-06-14\2012-06-14_003.xad

Created: 6/14/2012 10:11:32 AM
 Modified: 6/14/2012 10:54:41 AM

Electropherogram Summary Continued ...



Setpoint Deviations for sample 2 : Gh4 S Biofilm1 pl8

Height Threshold [FU] : 25

Overall Results for sample 2 : Gh4 S Biofilm1 pl8

Number of peaks found: 9 Corr. Area 1: 1,372.1
 Noise: 0.3

Peak table for sample 2 : Gh4 S Biofilm1 pl8

Peak	Size [bp]	Conc. [pg/μl]	Molarity [pmol/l]	Observations
1	35	125.00	5,411.3	Lower Marker
2	415	101.46	370.1	
3	439	350.76	1,210.4	
4	460	281.00	925.8	
5	517	57.42	168.3	
6	548	16.07	44.4	
7	567	24.91	66.6	
8	586	12.33	31.9	
9	597	11.24	28.5	
10	683	14.35	31.8	
11	10,380	75.00	10.9	Upper Marker

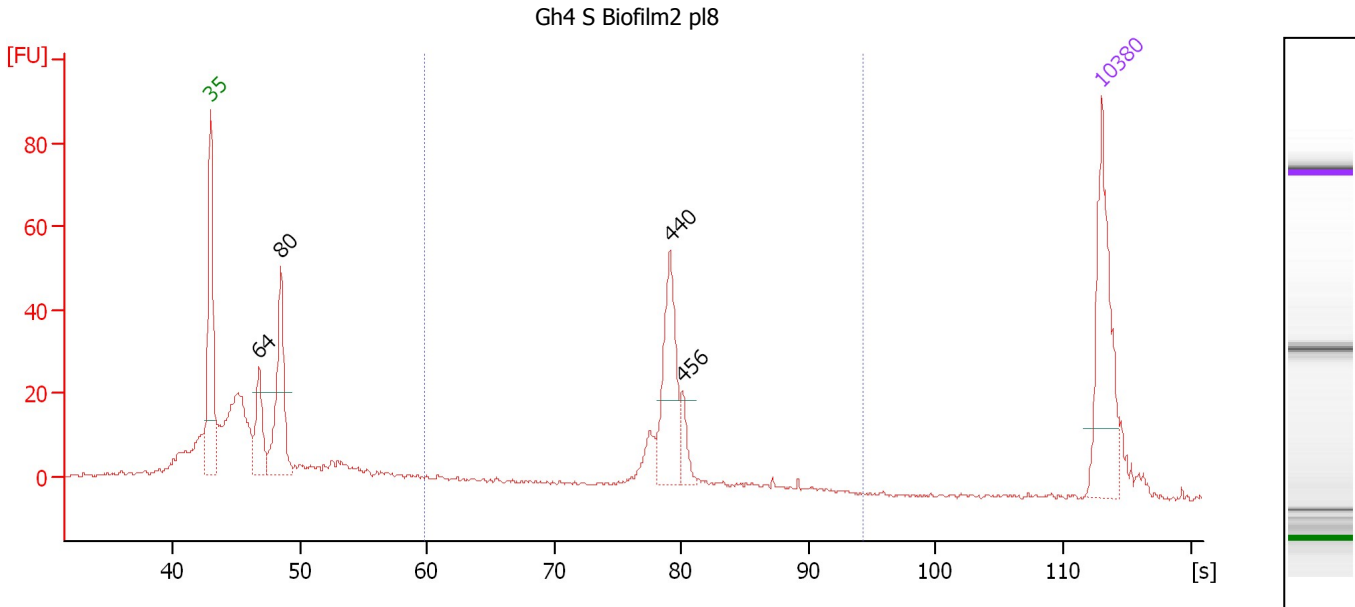
Region table for sample 2 : Gh4 S Biofilm1 pl8

From [s]	To [s]	Average Size [bp]	Molarity [pmol/l]	Conc. [pg/μl]	Corr. Area % of Total	Size distribution in CV [%]	Color
59.80	94.29	503	2,923.0	925.37	1,372.1 83	23.1	Blue

Assay Class: High Sensitivity DNA Assay
 Data Path: C:\...ents and Settings\Bioanalyzer\2012-06-14\2012-06-14_003.xad

Created: 6/14/2012 10:11:32 AM
 Modified: 6/14/2012 10:54:41 AM

Electropherogram Summary Continued ...



Overall Results for sample 3 : Gh4 S Biofilm2 pl8

Number of peaks found: 4 Corr. Area 1: 160.1
 Noise: 0.4

Peak table for sample 3 : Gh4 S Biofilm2 pl8

Peak	Size [bp]	Conc. [pg/μl]	Molarity [pmol/l]	Observations
1	35	125.00	5,411.3	Lower Marker
2	64	55.57	1,312.9	
3	80	116.86	2,209.0	
4	440	86.32	297.5	
5	456	18.00	59.8	
6	10,380	75.00	10.9	Upper Marker

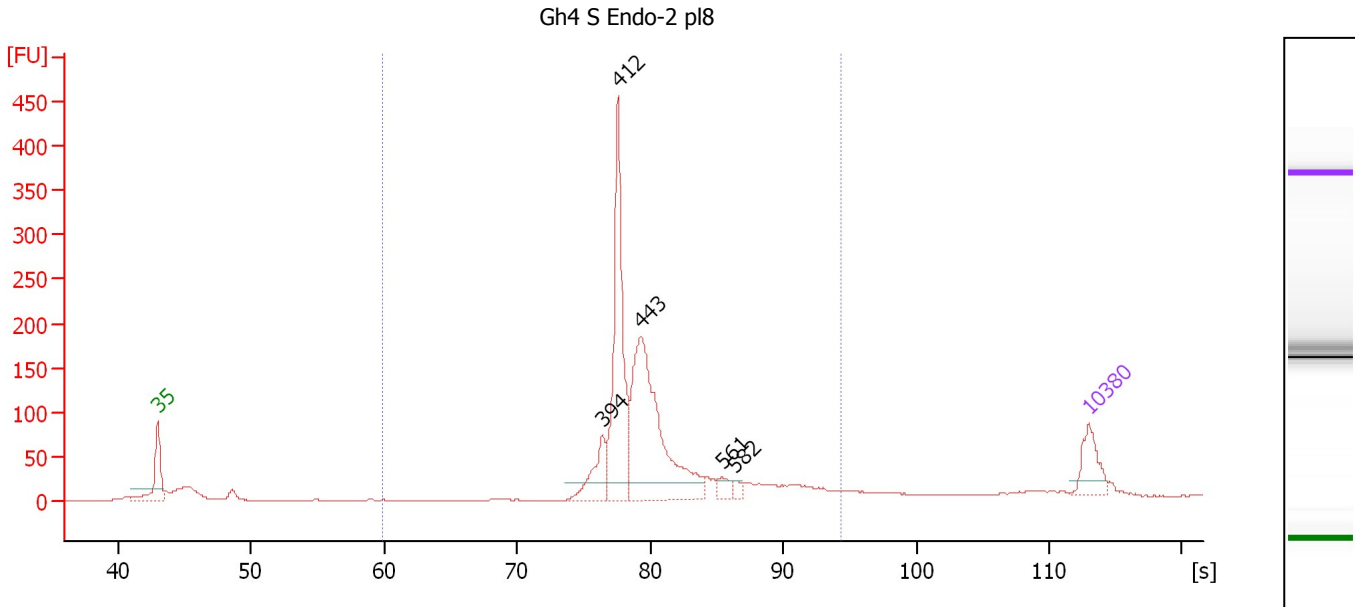
Region table for sample 3 : Gh4 S Biofilm2 pl8

From [s]	To [s]	Average Size [bp]	Molarity [pmol/l]	Conc. [pg/μl]	Corr. Area % of Total	Size distribution in CV [%]	Color
59.80	94.29	431	615.3	165.27	160.1 30	16.5	Blue

Assay Class: High Sensitivity DNA Assay
 Data Path: C:\...ents and Settings\Bioanalyzer\2012-06-14\2012-06-14_003.xad

Created: 6/14/2012 10:11:32 AM
 Modified: 6/14/2012 10:54:41 AM

Electropherogram Summary Continued ...



Overall Results for sample 4 : Gh4 S Endo-2 pl8

Number of peaks found: 5 Corr. Area 1: 1,324.6
 Noise: 0.3

Peak table for sample 4 : Gh4 S Endo-2 pl8

Peak	Size [bp]	Conc. [pg/μl]	Molarity [pmol/l]	Observations
1	35	125.00	5,411.3	Lower Marker
2	394	118.57	455.9	
3	412	482.83	1,775.0	
4	443	622.81	2,131.7	
5	561	31.57	85.2	
6	582	14.29	37.2	
7	10,380	75.00	10.9	Upper Marker

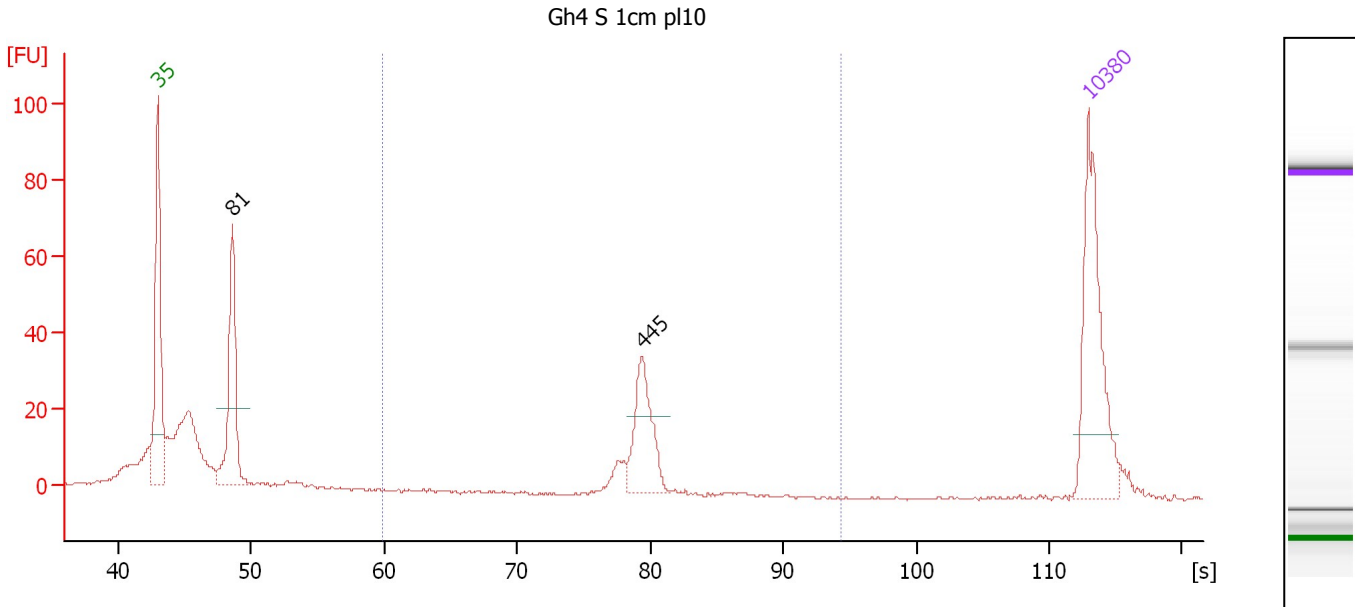
Region table for sample 4 : Gh4 S Endo-2 pl8

From [s]	To [s]	Average Size [bp]	Molarity [pmol/l]	Conc. [pg/μl]	Corr. Area % of Total	Size distribution in CV [%]	Color
59.80	94.29	467	4,514.8	1,343.04	1,324.6 88	20.5	Blue

Assay Class: High Sensitivity DNA Assay
 Data Path: C:\...ents and Settings\Bioanalyzer\2012-06-14\2012-06-14_003.xad

Created: 6/14/2012 10:11:32 AM
 Modified: 6/14/2012 10:54:41 AM

Electropherogram Summary Continued ...



Overall Results for sample 5 : Gh4 S 1cm pl10

Number of peaks found: 2 Corr. Area 1: 79.3
 Noise: 0.4

Peak table for sample 5 : Gh4 S 1cm pl10

Peak	Size [bp]	Conc. [pg/μl]	Molarity [pmol/l]	Observations
1	35	125.00	5,411.3	Lower Marker
2	81	108.93	2,040.8	
3	445	56.58	192.7	
4	10,380	75.00	10.9	Upper Marker

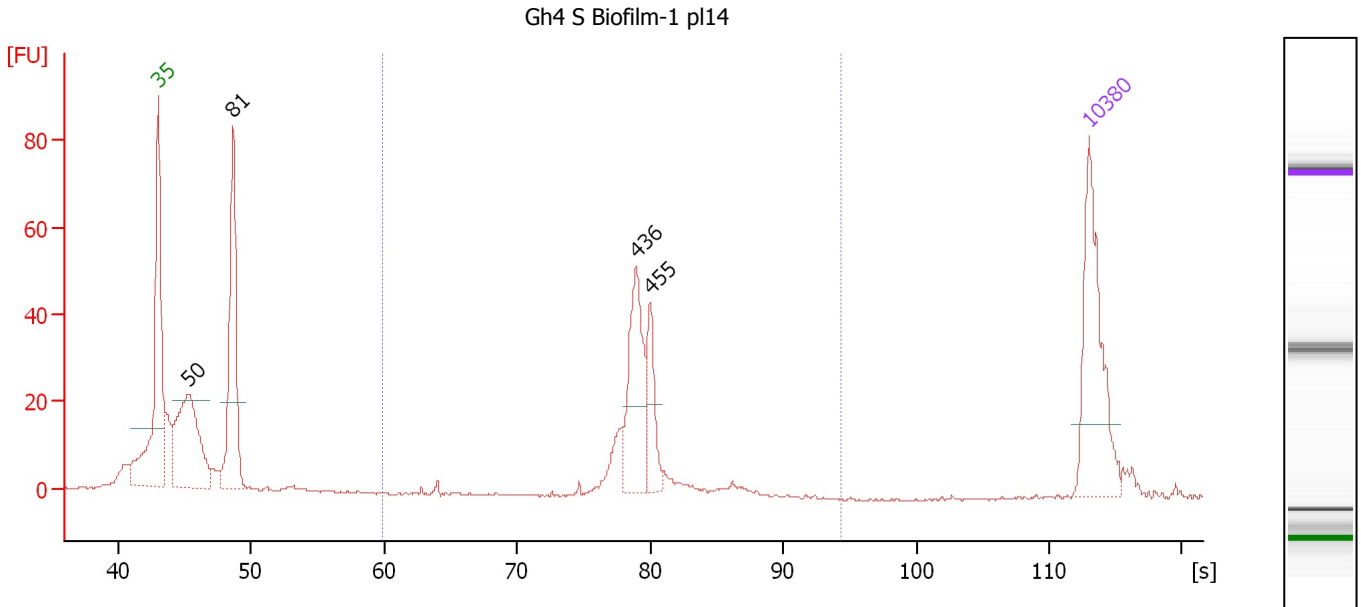
Region table for sample 5 : Gh4 S 1cm pl10

From [s]	To [s]	Average Size [bp]	Molarity [pmol/l]	Conc. [pg/μl]	Corr. Area % of Total	Size distribution in CV [%]	Color
59.80	94.29	442	216.8	63.20	79.3	23	3.6

Assay Class: High Sensitivity DNA Assay
 Data Path: C:\...ents and Settings\Bioanalyzer\2012-06-14\2012-06-14_003.xad

Created: 6/14/2012 10:11:32 AM
 Modified: 6/14/2012 10:54:41 AM

Electropherogram Summary Continued ...



Overall Results for sample 6 : Gh4 S Biofilm-1 pl14

Number of peaks found: 4 Corr. Area 1: 154.0
 Noise: 0.2

Peak table for sample 6 : Gh4 S Biofilm-1 pl14

Peak	Size [bp]	Conc. [pg/μl]	Molarity [pmol/l]	Observations
1	35	125.00	5,411.3	Lower Marker
2	50	140.12	4,211.2	
3	81	152.51	2,845.8	
4	436	80.84	280.6	
5	455	36.82	122.6	
6	10,380	75.00	10.9	Upper Marker

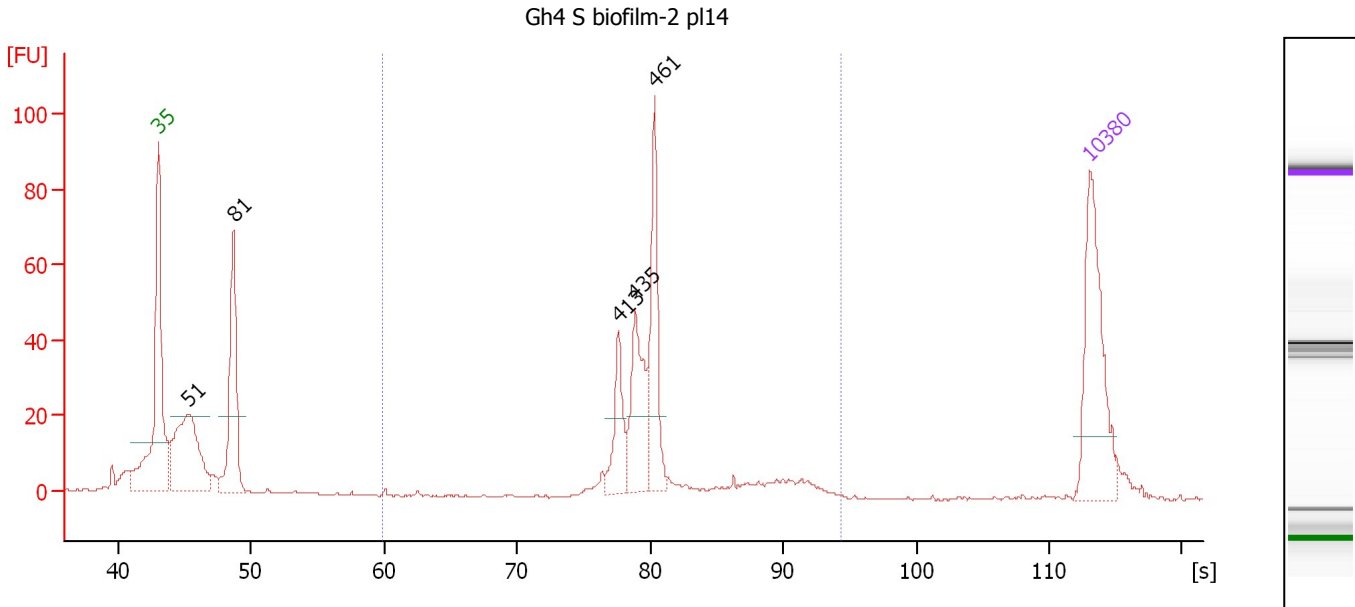
Region table for sample 6 : Gh4 S Biofilm-1 pl14

From [s]	To [s]	Average Size [bp]	Molarity [pmol/l]	Conc. [pg/μl]	Corr. Area % of Total	Size distribution in CV [%]	Color
59.80	94.29	442	510.4	148.02	154.0 36	7.3	Blue

Assay Class: High Sensitivity DNA Assay
 Data Path: C:\...ents and Settings\Bioanalyzer\2012-06-14\2012-06-14_003.xad

Created: 6/14/2012 10:11:32 AM
 Modified: 6/14/2012 10:54:41 AM

Electropherogram Summary Continued ...



Overall Results for sample 7 : Gh4 S biofilm-2 pl14

Number of peaks found: 5 Corr. Area 1: 251.2
 Noise: 0.3

Peak table for sample 7 : Gh4 S biofilm-2 pl14

Peak	Size [bp]	Conc. [pg/µl]	Molarity [pmol/l]	Observations
1	35	125.00	5,411.3	Lower Marker
2	51	128.27	3,836.3	
3	81	116.46	2,168.2	
4	413	38.56	141.4	
5	435	63.70	221.8	
6	461	70.32	231.2	
7	10,380	75.00	10.9	Upper Marker

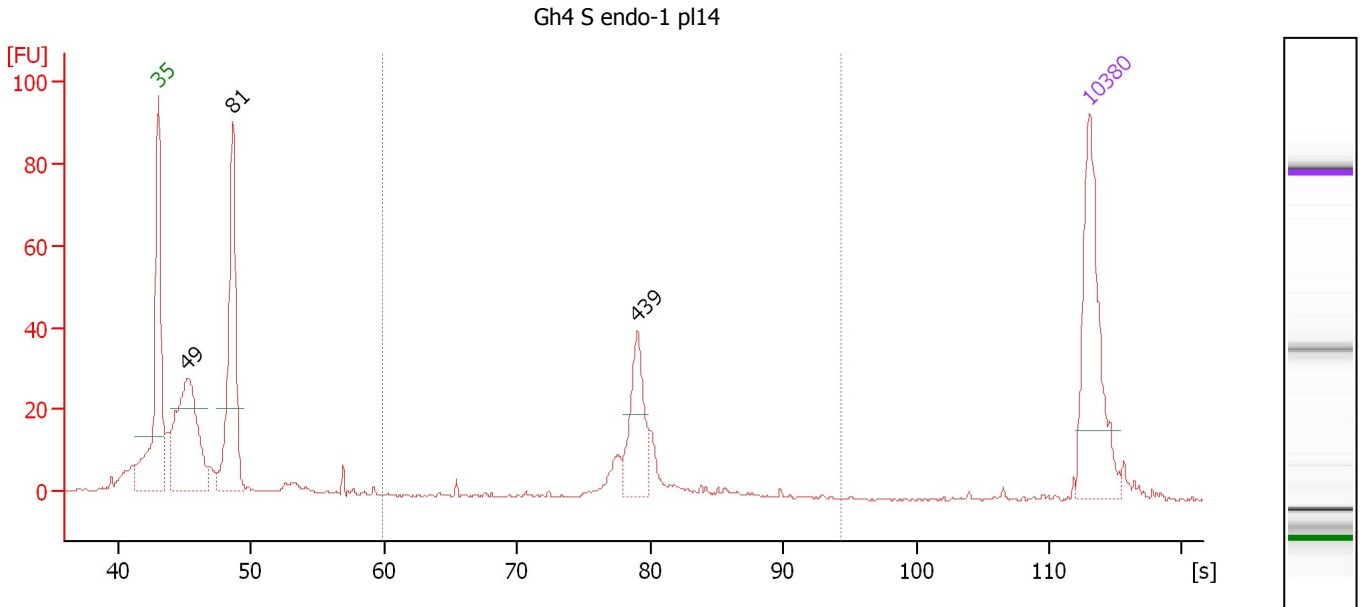
Region table for sample 7 : Gh4 S biofilm-2 pl14

From [s]	To [s]	Average Size [bp]	Molarity [pmol/l]	Conc. [pg/µl]	Corr. Area % of Total	Size distribution in CV [%]	Color
59.80	94.29	479	721.8	219.46	251.2 51	20.7	Blue

Assay Class: High Sensitivity DNA Assay
 Data Path: C:\...ents and Settings\Bioanalyzer\2012-06-14\2012-06-14_003.xad

Created: 6/14/2012 10:11:32 AM
 Modified: 6/14/2012 10:54:41 AM

Electropherogram Summary Continued ...



Overall Results for sample 8 : Gh4 S endo-1 pl14

Number of peaks found: 3 Corr. Area 1: 107.3
 Noise: 0.2

Peak table for sample 8 : Gh4 S endo-1 pl14

Peak	Size [bp]	Conc. [pg/μl]	Molarity [pmol/l]	Observations
1	35	125.00	5,411.3	Lower Marker
2	49	158.65	4,872.9	
3	81	163.03	3,046.9	
4	439	55.14	190.5	
5	10,380	75.00	10.9	Upper Marker

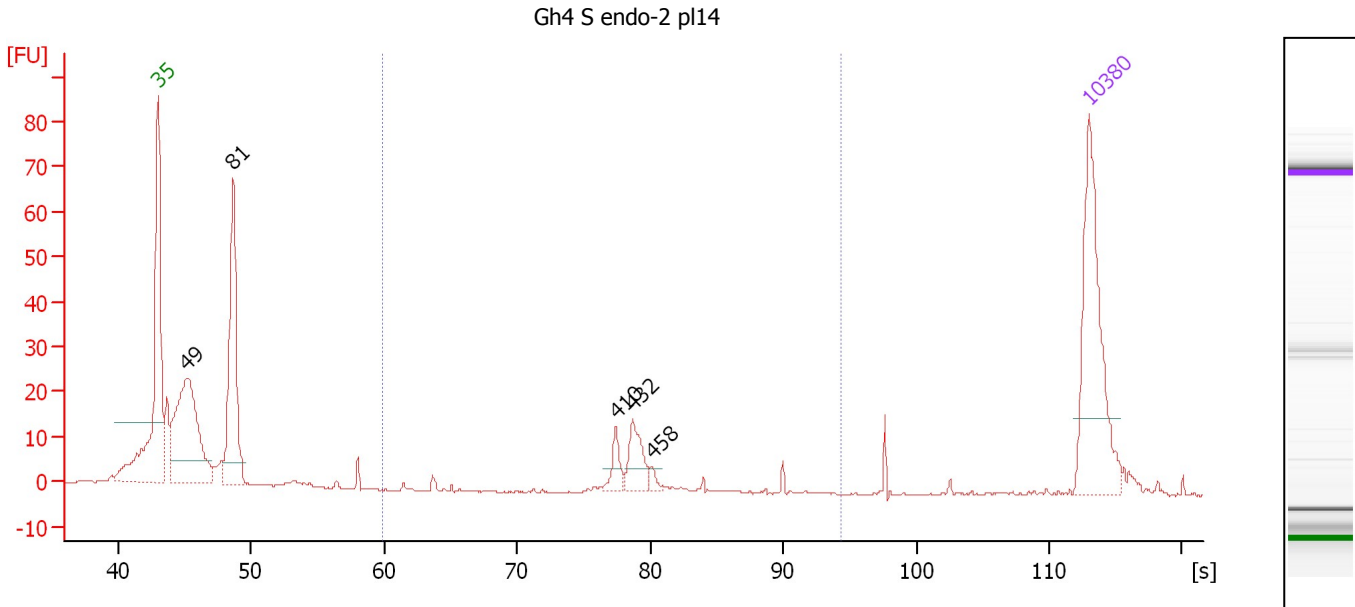
Region table for sample 8 : Gh4 S endo-1 pl14

From [s]	To [s]	Average Size [bp]	Molarity [pmol/l]	Conc. [pg/μl]	Corr. Area % of Total	Size distribution in CV [%]	Color
59.80	94.29	447	320.9	93.10	107.3 24	11.8	Blue

Assay Class: High Sensitivity DNA Assay
 Data Path: C:\...ents and Settings\Bioanalyzer\2012-06-14\2012-06-14_003.xad

Created: 6/14/2012 10:11:32 AM
 Modified: 6/14/2012 10:54:41 AM

Electropherogram Summary Continued ...



Setpoint Deviations for sample 9 : Gh4 S endo-2 pl14

Height Threshold [FU] : 5

Overall Results for sample 9 : Gh4 S endo-2 pl14

Number of peaks found: 5 Corr. Area 1: 43.1
 Noise: 0.2

Peak table for sample 9 : Gh4 S endo-2 pl14

Peak	Size [bp]	Conc. [pg/μl]	Molarity [pmol/l]	Observations
1	35	125.00	5,411.3	Lower Marker
2	49	149.11	4,576.5	
3	81	127.15	2,372.4	
4	410	12.02	44.5	
5	432	22.55	79.2	
6	458	3.86	12.8	
7	10,380	75.00	10.9	Upper Marker

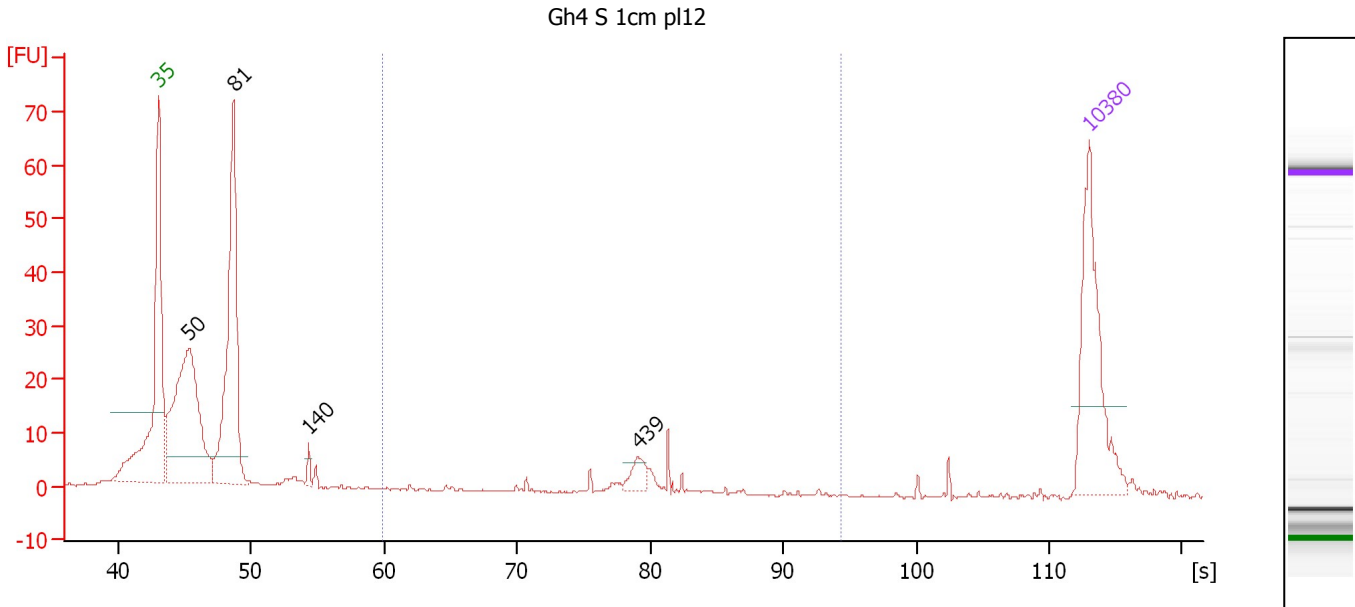
Region table for sample 9 : Gh4 S endo-2 pl14

From [s]	To [s]	Average Size [bp]	Molarity [pmol/l]	Conc. [pg/μl]	Corr. Area	% of Total	Size distribution in CV [%]	Color
59.80	94.29	439	146.1	40.95	43.1	14	14.6	Blue

Assay Class: High Sensitivity DNA Assay
 Data Path: C:\...ents and Settings\Bioanalyzer\2012-06-14\2012-06-14_003.xad

Created: 6/14/2012 10:11:32 AM
 Modified: 6/14/2012 10:54:41 AM

Electropherogram Summary Continued ...



Setpoint Deviations for sample 10 : Gh4 S 1cm pl12

Height Threshold [FU] : 5

Overall Results for sample 10 : Gh4 S 1cm pl12

Number of peaks found: 4 Corr. Area 1: 23.8
 Noise: 0.1

Peak table for sample 10 : Gh4 S 1cm pl12

Peak	Size [bp]	Conc. [pg/μl]	Molarity [pmol/l]	Observations
1	35	125.00	5,411.3	Lower Marker
2	50	224.38	6,743.8	
3	81	212.92	3,964.6	
4	140	6.50	70.5	
5	439	12.13	41.9	
6	10,380	75.00	10.9	Upper Marker

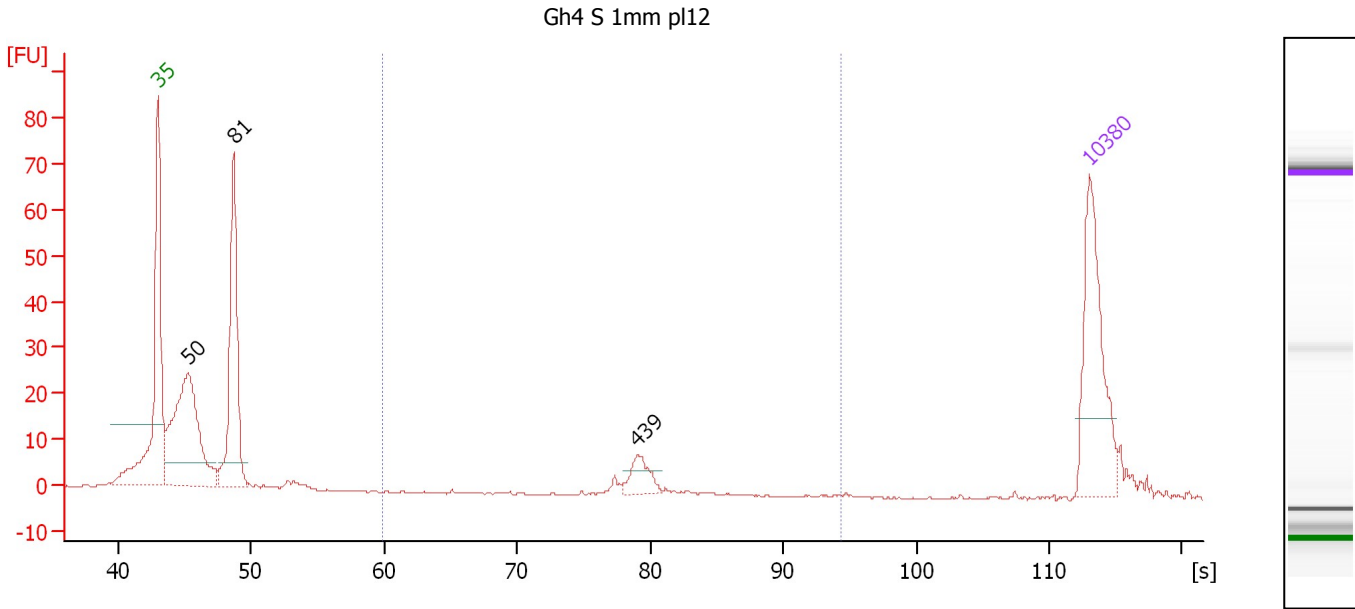
Region table for sample 10 : Gh4 S 1cm pl12

From [s]	To [s]	Average Size [bp]	Molarity [pmol/l]	Conc. [pg/μl]	Corr. Area % of Total	Size distribution in CV [%]	Color	
59.80	94.29	444	100.8	28.63	23.8	8	14.9	■

Assay Class: High Sensitivity DNA Assay
 Data Path: C:\...ents and Settings\Bioanalyzer\2012-06-14\2012-06-14_003.xad

Created: 6/14/2012 10:11:32 AM
 Modified: 6/14/2012 10:54:41 AM

Electropherogram Summary Continued ...



Setpoint Deviations for sample 11 : Gh4 S 1mm pl12

Height Threshold [FU] : 5

Overall Results for sample 11 : Gh4 S 1mm pl12

Number of peaks found: 3 Corr. Area 1: 20.7
 Noise: 0.2

Peak table for sample 11 : Gh4 S 1mm pl12

Peak	Size [bp]	Conc. [pg/µl]	Molarity [pmol/l]	Observations
1	35	125.00	5,411.3	Lower Marker
2	50	193.41	5,879.8	
3	81	155.89	2,900.6	
4	439	19.76	68.3	
5	10,380	75.00	10.9	Upper Marker

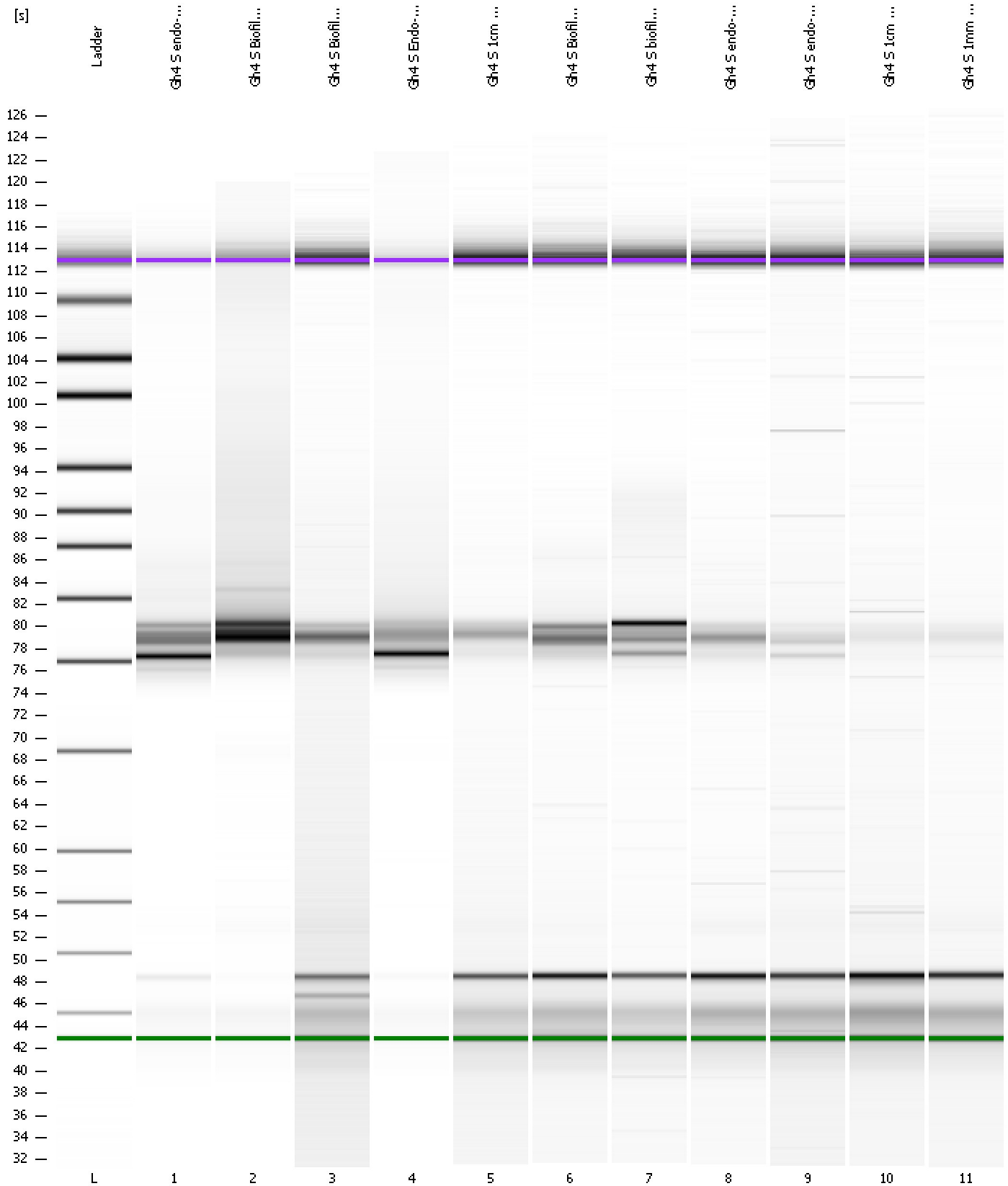
Region table for sample 11 : Gh4 S 1mm pl12

From [s]	To [s]	Average Size [bp]	Molarity [pmol/l]	Conc. [pg/µl]	Corr. Area % of Total	Size distribution in CV [%]	Color	
59.80	94.29	440	75.1	21.78	20.7	7	4.5	Blue

Assay Class: High Sensitivity DNA Assay
Data Path: C:\...ents and Settings\Bioanalyzer\2012-06-14\2012-06-14_003.xad

Created: 6/14/2012 10:11:32 AM
Modified: 6/14/2012 10:54:41 AM

Gel Image



Assay Class: High Sensitivity DNA Assay
 Data Path: C:\...ents and Settings\Bioanalyzer\2012-06-14\2012-06-14_003.xad

Created: 6/14/2012 10:11:32 AM
 Modified: 6/14/2012 10:54:41 AM

Run Logbook

Description	Number	Source	Category	Sub Category	Time	Time Zone	User	Host
Run ended on port 1 (Number of wells acquired: 12)		Instrument	Run		6/14/2012 10:52:50 AM	(GMT --07:00) Pacific Standard Time	UC Davis	D8XSMGH1
Run started on port 1 (File: C:\Documents and Settings\Bioanalyzer\2012-06-14\2012-06-14_003.xad)		Instrument	Run		6/14/2012 10:11:37 AM	(GMT --07:00) Pacific Standard Time	UC Davis	D8XSMGH1
Product Number : G2938B		Instrument	Run		6/14/2012 10:11:37 AM	(GMT --07:00) Pacific Standard Time	UC Davis	D8XSMGH1
Name :		Instrument	Run		6/14/2012 10:11:37 AM	(GMT --07:00) Pacific Standard Time	UC Davis	D8XSMGH1
Vendor : Agilent Technologies		Instrument	Run		6/14/2012 10:11:37 AM	(GMT --07:00) Pacific Standard Time	UC Davis	D8XSMGH1
Serial# : DE13701086		Instrument	Run		6/14/2012 10:11:37 AM	(GMT --07:00) Pacific Standard Time	UC Davis	D8XSMGH1
Firmware : C.01.069		Instrument	Run		6/14/2012 10:11:37 AM	(GMT --07:00) Pacific Standard Time	UC Davis	D8XSMGH1
Cartridge : Electrode		Instrument	Run		6/14/2012 10:11:37 AM	(GMT --07:00) Pacific Standard Time	UC Davis	D8XSMGH1