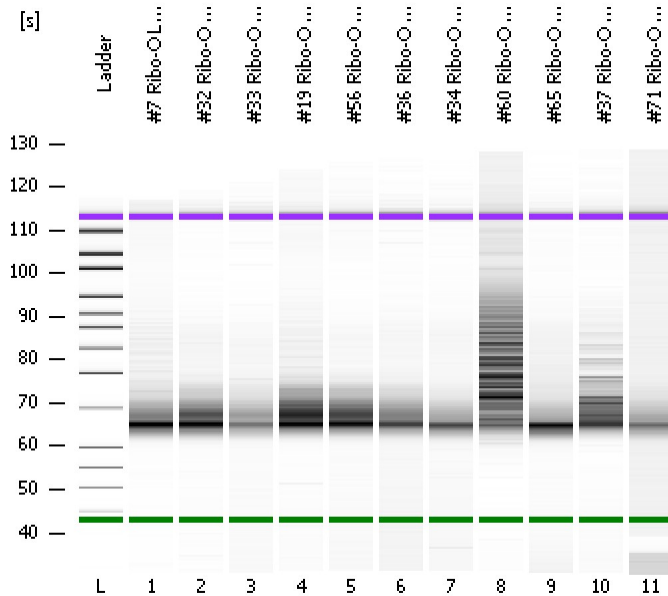


Assay Class: High Sensitivity DNA Assay
Data Path: C:\...ents and Settings\Bioanalyzer\2012-06-15\2012-06-15_002.xad

Created: 6/15/2012 10:59:27 AM
Modified: 6/15/2012 11:41:49 AM

Electrophoresis File Run Summary



Instrument Information:

Instrument Name: DE13701086 Firmware: C.01.069
Serial#: DE13701086 Type: G2938B

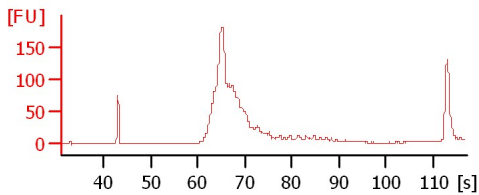
Assay Information:

Assay Origin Path: C:\Program Files\Agilent\2100 bioanalyzer\2100 expert\assays\dsDNA\High Sensitivity DNA.xsy
Assay Class: High Sensitivity DNA Assay
Version: 1.03
Assay Comments: Copyright © 2003-2010 Agilent Technologies

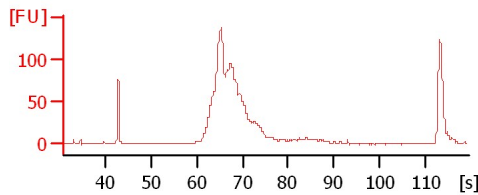
Chip Information:

Chip Lot #: Reagent Kit Lot #: Chip Comments:

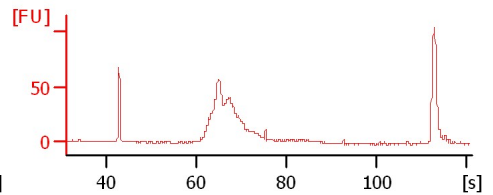
#7 Ribo-O Lib 6/14/12 (post adp purif)



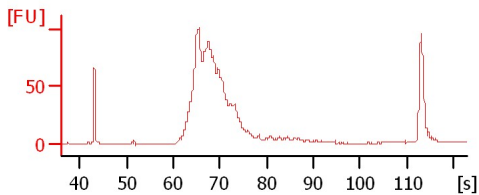
#32 Ribo-O Lib 6/14/12 (post adp purif)



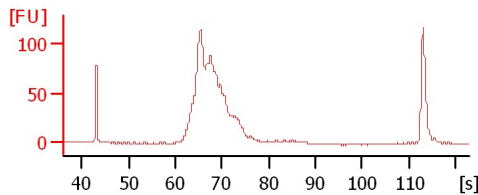
#33 Ribo-O Lib 6/14/12 (post adp purif)



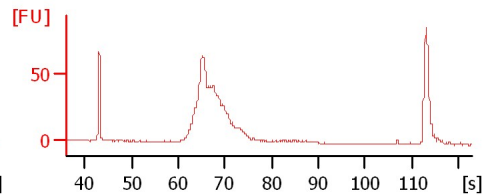
#19 Ribo-O Lib 6/14/12 (post adp purif)



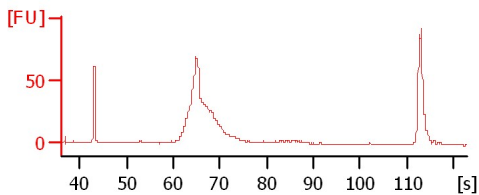
#56 Ribo-O Lib 6/14/12 (post adp purif)



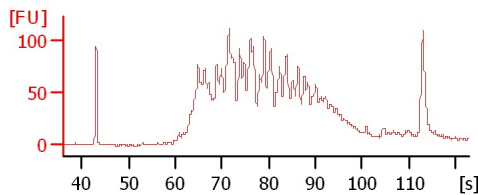
#36 Ribo-O Lib 6/14/12 (post adp purif)



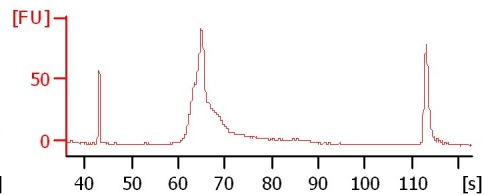
#34 Ribo-O Lib 6/14/12 (post adp purif)



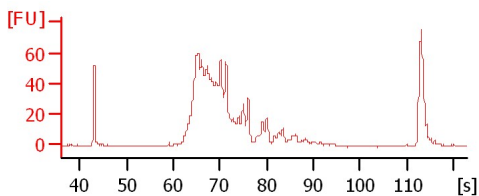
#60 Ribo-O Lib 6/14/12 (post adp purif)



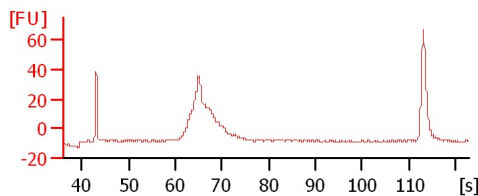
#65 Ribo-O Lib 6/14/12 (post adp purif)



#37 Ribo-O Lib 6/14/12 (post adp purif)



#71 Ribo-O Lib 6/14/12 (post adp purif)



Assay Class: High Sensitivity DNA Assay
Data Path: C:\...ents and Settings\Bioanalyzer\2012-06-15\2012-06-15_002.xad

Created: 6/15/2012 10:59:27 AM
Modified: 6/15/2012 11:41:49 AM

Electrophoresis File Run Summary (Chip Summary)

Sample Name	Sample Comment	Rest. Digest	Status	Observation	Result Label	Result Color
#7 Ribo-O Lib 6/14/12 (post adp purif)		<input type="checkbox"/>	✓			
#32 Ribo-O Lib 6/14/12 (post adp purif)		<input type="checkbox"/>	✓			
#33 Ribo-O Lib 6/14/12 (post adp purif)		<input type="checkbox"/>	✓			
#19 Ribo-O Lib 6/14/12 (post adp purif)		<input type="checkbox"/>	✓			
#56 Ribo-O Lib 6/14/12 (post adp purif)		<input type="checkbox"/>	✓			
#36 Ribo-O Lib 6/14/12 (post adp purif)		<input type="checkbox"/>	✓			
#34 Ribo-O Lib 6/14/12 (post adp purif)		<input type="checkbox"/>	✓			
#60 Ribo-O Lib 6/14/12 (post adp purif)		<input type="checkbox"/>	✓			
#65 Ribo-O Lib 6/14/12 (post adp purif)		<input type="checkbox"/>	✓			
#37 Ribo-O Lib 6/14/12 (post adp purif)		<input type="checkbox"/>	✓			
#71 Ribo-O Lib 6/14/12 (post adp purif)		<input type="checkbox"/>	✓			
Ladder		<input type="checkbox"/>	✓			

Chip Lot #

Reagent Kit Lot #

Chip Comments :

Assay Class: High Sensitivity DNA Assay
Data Path: C:\...ents and Settings\Bioanalyzer\2012-06-15\2012-06-15_002.xad

Created: 6/15/2012 10:59:27 AM
Modified: 6/15/2012 11:41:49 AM

Electrophoresis Assay Details

General Analysis Settings

Number of Available Sample and Ladder Wells (Max.) : 12
Minimum Visible Range [s] : 32
Maximum Visible Range [s] : 138
Start Analysis Time Range [s] : 33
End Analysis Time Range [s] : 137.5
Ladder Concentration [pg/μl] : 1950
Uses Standard Area for Ladder Fragments
Lower Marker Concentration [pg/μl] : 125
Upper Marker Concentration [pg/μl] : 75
Used Upper Marker for Quantitation
Standard Curve Fit is Point to Point
Show Data Aligned to Lower and Upper Marker

Integrator Settings

Integration Start Time [s] : 33.05
Integration End Time [s] : 137
Slope Threshold : 0.8
Height Threshold [FU] : 5
Area Threshold : 0.1
Width Threshold [s] : 0.6
Baseline Plateau [s] : 0.5

Filter Settings

Filter Width [s] : 0.5
Polynomial Order : 4

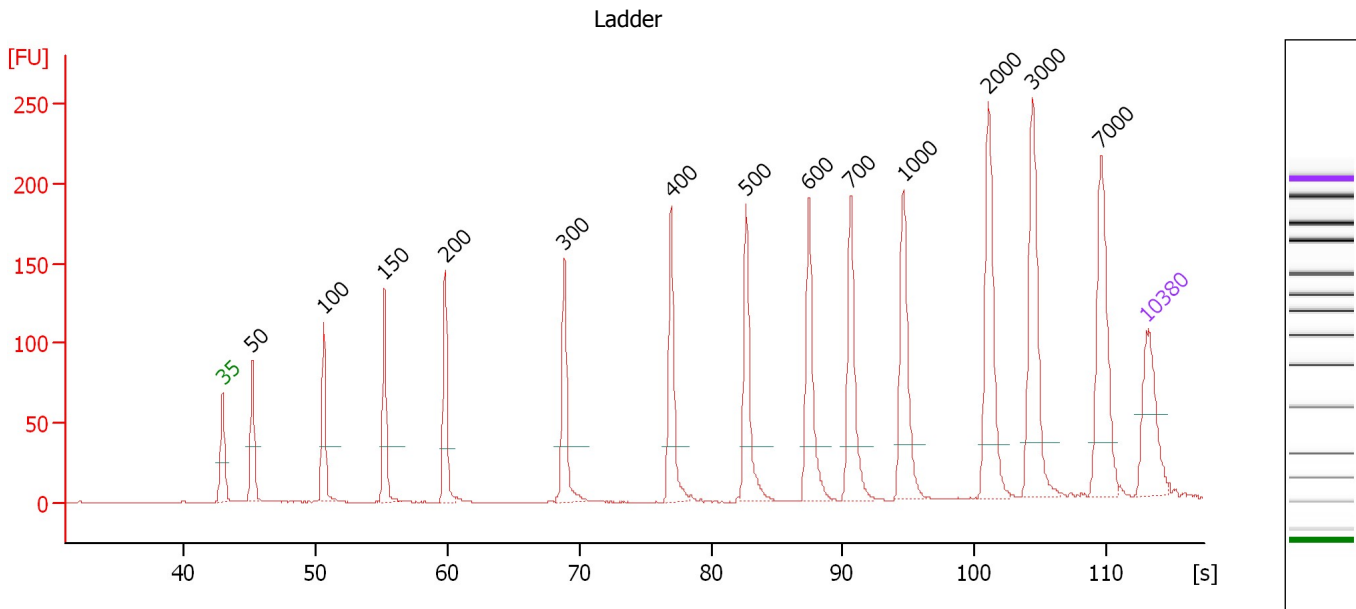
Ladder

Ladder Peak	Size	Area
1	35	160
2	50	210
3	100	208
4	150	221
5	200	242
6	300	270
7	400	305
8	500	306
9	600	336
10	700	321
11	1000	366
12	2000	413
13	3000	411
14	7000	400
15	10380	214

Assay Class: High Sensitivity DNA Assay
 Data Path: C:\...ents and Settings\Bioanalyzer\2012-06-15\2012-06-15_002.xad

Created: 6/15/2012 10:59:27 AM
 Modified: 6/15/2012 11:41:49 AM

Electropherogram Summary



Overall Results for Ladder

Noise: 0.1

Peak table for Ladder

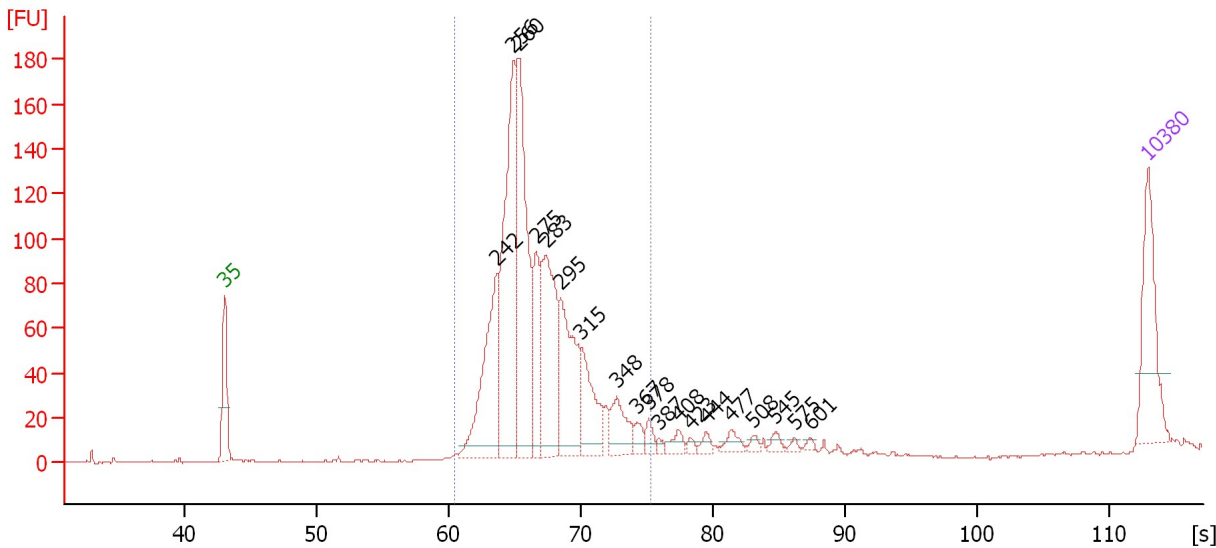
Peak	Size [bp]	Conc. [pg/μl]	Molarity [pmol/l]	Observations
1	35	125.00	5,411.3	Lower Marker
2	50	150.00	4,545.5	Ladder Peak
3	100	150.00	2,272.7	Ladder Peak
4	150	150.00	1,515.2	Ladder Peak
5	200	150.00	1,136.4	Ladder Peak
6	300	150.00	757.6	Ladder Peak
7	400	150.00	568.2	Ladder Peak
8	500	150.00	454.5	Ladder Peak
9	600	150.00	378.8	Ladder Peak
10	700	150.00	324.7	Ladder Peak
11	1,000	150.00	227.3	Ladder Peak
12	2,000	150.00	113.6	Ladder Peak
13	3,000	150.00	75.8	Ladder Peak
14	7,000	150.00	32.5	Ladder Peak
15	10,380	75.00	10.9	Upper Marker

Assay Class: High Sensitivity DNA Assay
 Data Path: C:\...ents and Settings\Bioanalyzer\2012-06-15\2012-06-15_002.xad

Created: 6/15/2012 10:59:27 AM
 Modified: 6/15/2012 11:41:49 AM

Electropherogram Summary Continued ...

#7 Ribo-O Lib 6/14/12 (post adp purif)



Overall Results for sample 1 : #7 Ribo-O Lib 6/14/12 (post adp purif)

Number of peaks found: 19 Corr. Area 1: 1,322.3
 Noise: 0.2

Peak table for sample 1 : #7 Ribo-O Lib 6/14/12 (post adp purif)

Peak	Size [bp]	Conc. [pg/μl]	Molarity [pmol/l]	Observations
1	35	125.00	5,411.3	Lower Marker
2	242	178.95	1,118.8	
3	256	289.08	1,711.9	
4	260	278.12	1,618.5	
5	275	80.52	444.0	
6	283	179.30	958.8	
7	295	146.23	749.8	
8	315	79.80	384.4	
9	348	47.16	205.5	
10	367	13.57	56.0	
11	378	12.89	51.7	
12	387	4.73	18.5	
13	408	13.04	48.5	
14	423	5.14	18.4	
15	444	8.49	29.0	
16	477	12.54	39.8	
17	508	5.91	17.6	
18	545	7.29	20.3	
19	575	3.53	9.3	
20	601	3.49	8.8	
21	10,380	75.00	10.9	Upper Marker

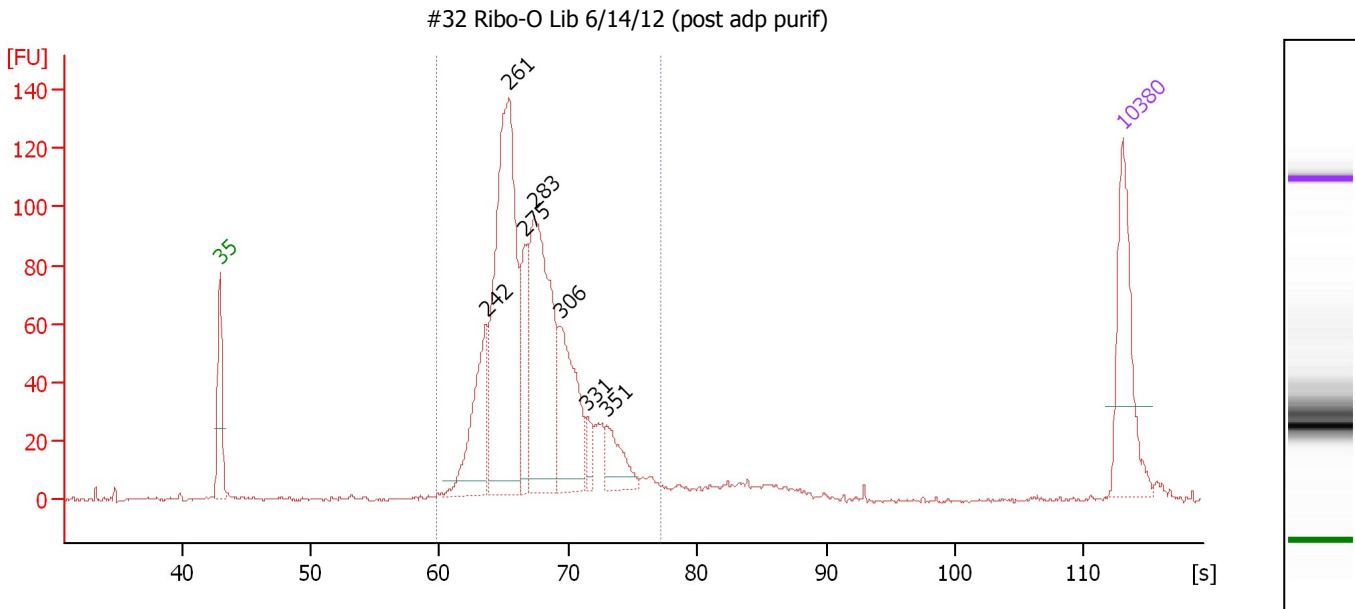
Region table for sample 1 : #7 Ribo-O Lib 6/14/12 (post adp purif)

From [s]	To [s]	Average Size [bp]	Molarity [pmol/l]	Conc. [pg/μl]	Corr. Area % of Total	Size distribution in CV [%]	Color
60.45	75.35	277	7,270.2	1,309.64	1,322.3 93	12.1	Blue

Assay Class: High Sensitivity DNA Assay
 Data Path: C:\...ents and Settings\Bioanalyzer\2012-06-15\2012-06-15_002.xad

Created: 6/15/2012 10:59:27 AM
 Modified: 6/15/2012 11:41:49 AM

Electropherogram Summary Continued ...



Overall Results for sample 2 : #32 Ribo-O Lib 6/14/12 (post adp purif)

Number of peaks found: 7 Corr. Area 1: 1,230.4
 Noise: 0.4

Peak table for sample 2 : #32 Ribo-O Lib 6/14/12 (post adp purif)

Peak	Size [bp]	Conc. [pg/μl]	Molarity [pmol/l]	Observations
1	35	125.00	5,411.3	Lower Marker
2	242	115.15	720.6	
3	261	360.97	2,091.7	
4	275	67.32	370.5	
5	283	245.25	1,312.4	
6	306	121.86	602.6	
7	331	17.01	77.8	
8	351	39.58	171.0	
9	10,380	75.00	10.9	Upper Marker

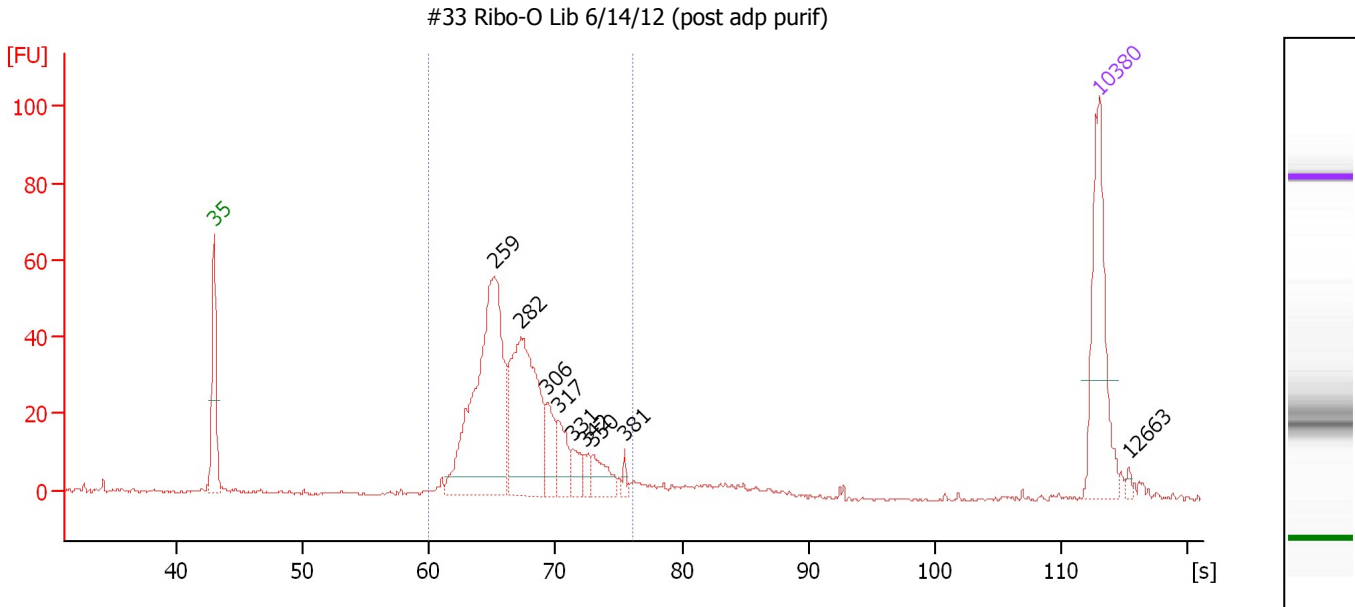
Region table for sample 2 : #32 Ribo-O Lib 6/14/12 (post adp purif)

From [s]	To [s]	Average Size [bp]	Molarity [pmol/l]	Conc. [pg/μl]	Corr. Area % of Total	Size distribution in CV [%]	Color
59.85	77.19	283	5,778.0	1,062.76	1,230.4 92	13.0	Blue

Assay Class: High Sensitivity DNA Assay
 Data Path: C:\...ents and Settings\Bioanalyzer\2012-06-15\2012-06-15_002.xad

Created: 6/15/2012 10:59:27 AM
 Modified: 6/15/2012 11:41:49 AM

Electropherogram Summary Continued ...



Overall Results for sample 3 : #33 Ribo-O Lib 6/14/12 (post adp purif)

Number of peaks found: 9 Corr. Area 1: 517.1
 Noise: 0.4

Peak table for sample 3 : #33 Ribo-O Lib 6/14/12 (post adp purif)

Peak	Size [bp]	Conc. [pg/μl]	Molarity [pmol/l]	Observations
1	35	125.00	5,411.3	Lower Marker
2	259	260.78	1,526.0	
3	282	170.74	916.0	
4	306	31.43	155.6	
5	317	27.45	131.2	
6	331	16.85	77.1	
7	342	10.63	47.1	
8	350	23.40	101.2	
9	381	4.63	18.4	
10	10,380	75.00	10.9	Upper Marker
11	12,663	0.00	0.0	

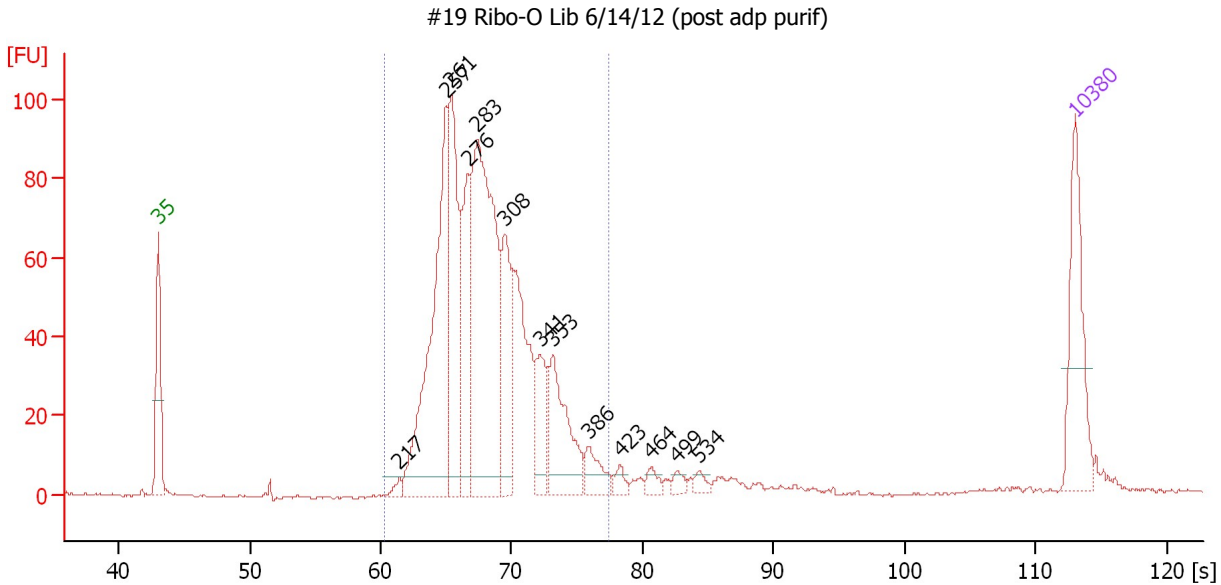
Region table for sample 3 : #33 Ribo-O Lib 6/14/12 (post adp purif)

From [s]	To [s]	Average Size [bp]	Molarity [pmol/l]	Conc. [pg/μl]	Corr. Area	% of Total	Size distribution in CV [%]	Color
60.02	76.03	281	3,029.3	553.06	517.1	88	12.9	Blue

Assay Class: High Sensitivity DNA Assay
 Data Path: C:\...ents and Settings\Bioanalyzer\2012-06-15\2012-06-15_002.xad

Created: 6/15/2012 10:59:27 AM
 Modified: 6/15/2012 11:41:49 AM

Electropherogram Summary Continued ...



Overall Results for sample 4 : #19 Ribo-O Lib 6/14/12 (post adp purif)

Number of peaks found: 13 Corr. Area 1: 1,084.5
 Noise: 0.4

Peak table for sample 4 : #19 Ribo-O Lib 6/14/12 (post adp purif)

Peak	Size [bp]	Conc. [pg/μl]	Molarity [pmol/l]	Observations
1	35	125.00	5,411.3	Lower Marker
2	217	8.12	56.7	
3	257	288.71	1,703.4	
4	261	174.70	1,013.6	
5	276	119.08	654.6	
6	283	361.71	1,934.1	
7	308	108.58	534.5	
8	341	55.26	245.8	
9	353	99.84	428.5	
10	386	26.77	105.0	
11	423	9.48	34.0	
12	464	10.04	32.8	
13	499	7.93	24.1	
14	534	7.31	20.7	
15	10,380	75.00	10.9	Upper Marker

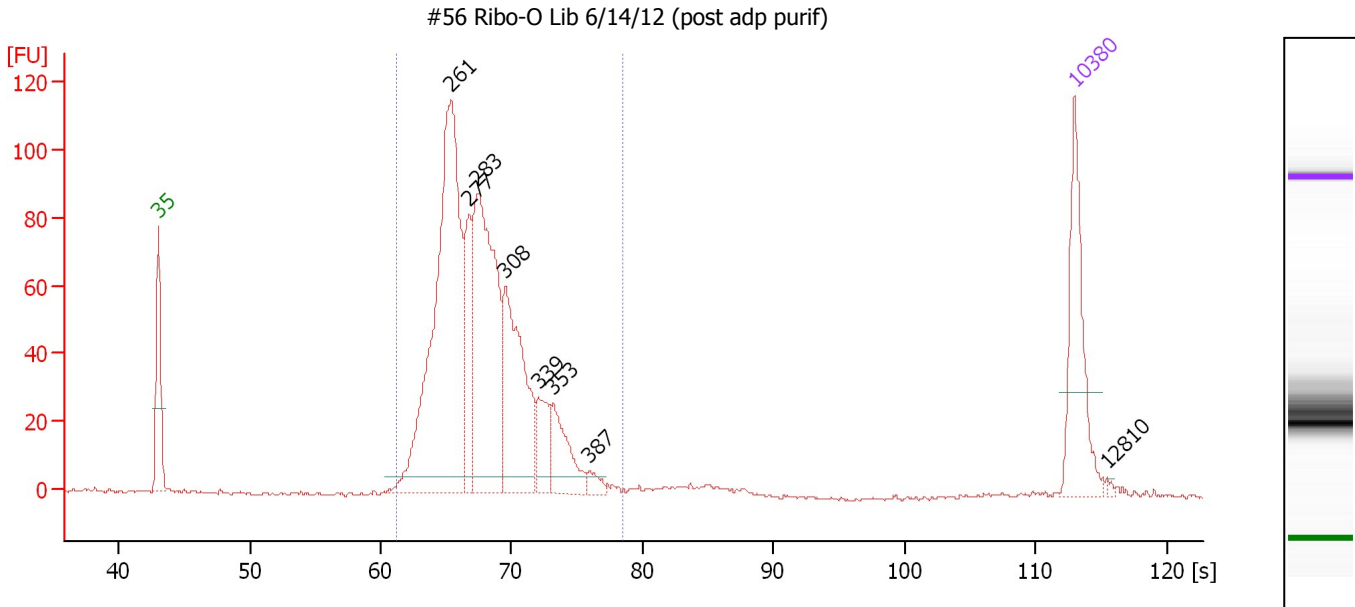
Region table for sample 4 : #19 Ribo-O Lib 6/14/12 (post adp purif)

From [s]	To [s]	Average Size [bp]	Molarity [pmol/l]	Conc. [pg/μl]	Corr. Area	% of Total	Size distribution in CV [%]	Color
60.36	77.44	293	7,339.1	1,392.42	1,084.5	92	13.0	Blue

Assay Class: High Sensitivity DNA Assay
 Data Path: C:\...ents and Settings\Bioanalyzer\2012-06-15\2012-06-15_002.xad

Created: 6/15/2012 10:59:27 AM
 Modified: 6/15/2012 11:41:49 AM

Electropherogram Summary Continued ...



Overall Results for sample 5 : #56 Ribo-O Lib 6/14/12 (post adp purif)

Number of peaks found: 8 Corr. Area 1: 1,044.7
 Noise: 0.6

Peak table for sample 5 : #56 Ribo-O Lib 6/14/12 (post adp purif)

Peak	Size [bp]	Conc. [pg/μl]	Molarity [pmol/l]	Observations
1	35	125.00	5,411.3	Lower Marker
2	261	436.82	2,533.0	
3	277	78.29	429.0	
4	283	272.14	1,454.9	
5	308	163.65	805.6	
6	339	39.26	175.7	
7	353	55.22	237.1	
8	387	9.27	36.3	
9	10,380	75.00	10.9	Upper Marker
10	12,810	0.00	0.0	

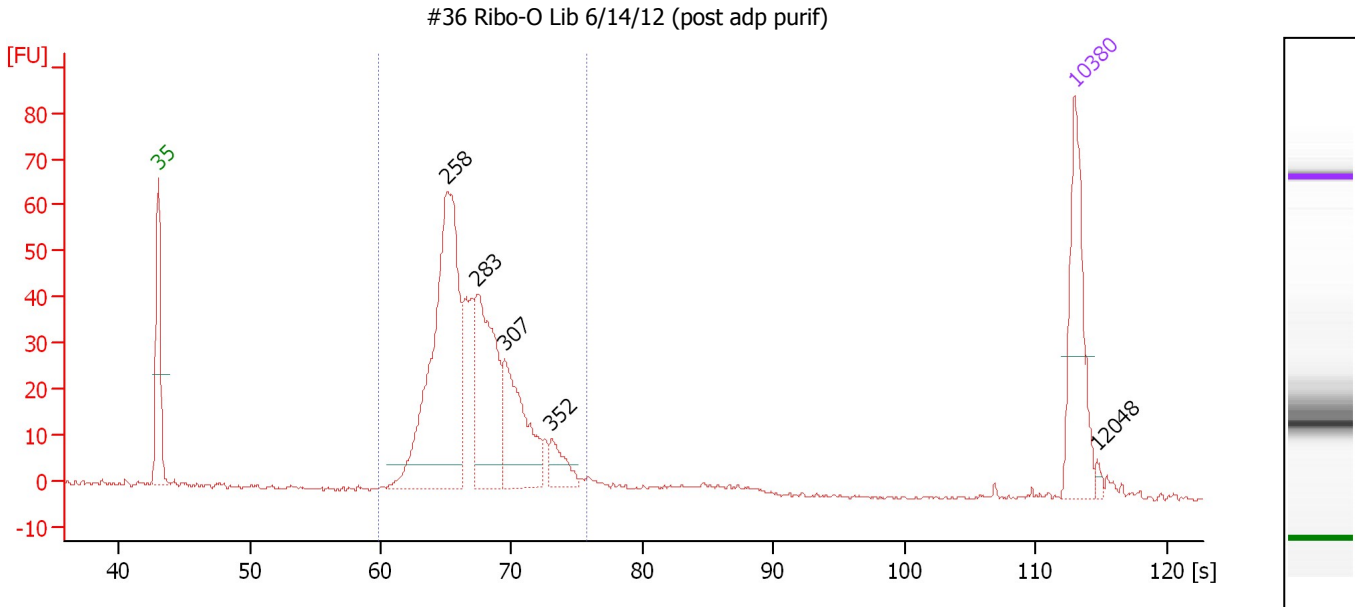
Region table for sample 5 : #56 Ribo-O Lib 6/14/12 (post adp purif)

From [s]	To [s]	Average Size [bp]	Molarity [pmol/l]	Conc. [pg/μl]	Corr. Area	% of Total	Size distribution CV [%]	Color
61.20	78.43	288	5,558.8	1,040.58	1,044.7	97	12.5	Blue

Assay Class: High Sensitivity DNA Assay
 Data Path: C:\...ents and Settings\Bioanalyzer\2012-06-15\2012-06-15_002.xad

Created: 6/15/2012 10:59:27 AM
 Modified: 6/15/2012 11:41:49 AM

Electropherogram Summary Continued ...



Overall Results for sample 6 : #36 Ribo-O Lib 6/14/12 (post adp purif)

Number of peaks found: 5 Corr. Area 1: 531.9
 Noise: 0.4

Peak table for sample 6 : #36 Ribo-O Lib 6/14/12 (post adp purif)

Peak	Size [bp]	Conc. [pg/μl]	Molarity [pmol/l]	Observations
1	35	125.00	5,411.3	Lower Marker
2	258	324.33	1,907.0	
3	283	149.62	800.9	
4	307	104.41	515.0	
5	352	25.06	108.0	
6	10,380	75.00	10.9	Upper Marker
7	12,048	0.00	0.0	

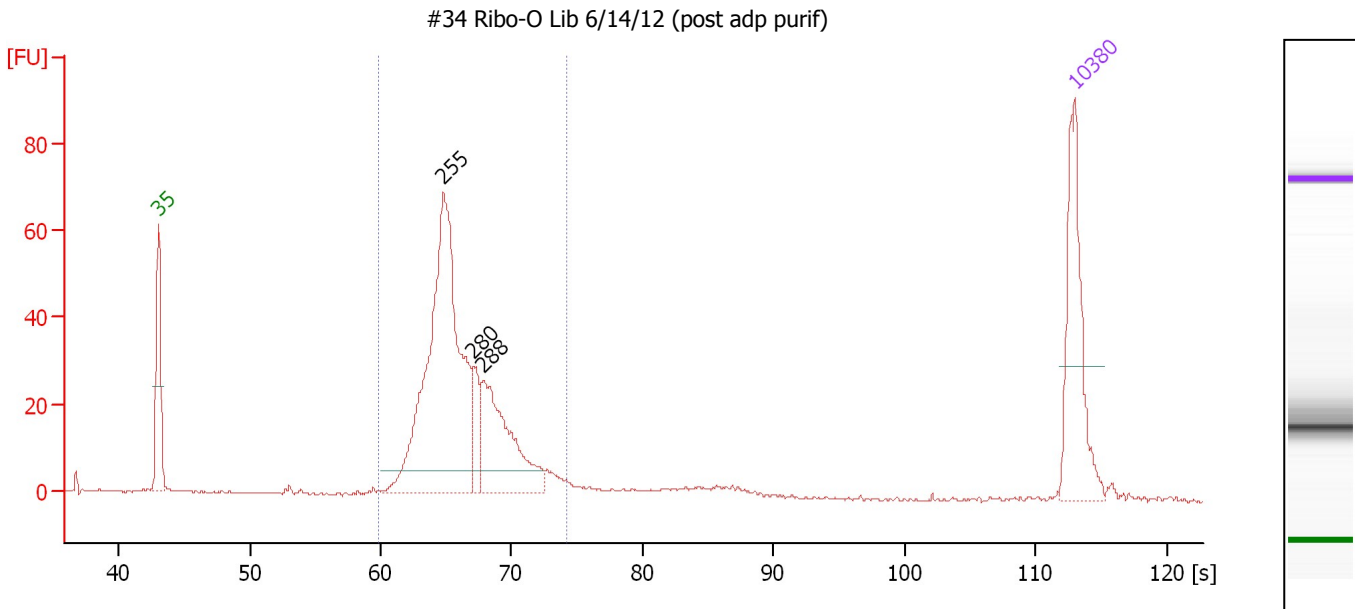
Region table for sample 6 : #36 Ribo-O Lib 6/14/12 (post adp purif)

From [s]	To [s]	Average Size [bp]	Molarity [pmol/l]	Conc. [pg/μl]	Corr. Area % of Total	Size distribution in CV [%]	Color
59.85	75.76	282	3,722.0	683.61	531.9 94	11.8	Blue

Assay Class: High Sensitivity DNA Assay
 Data Path: C:\...ents and Settings\Bioanalyzer\2012-06-15\2012-06-15_002.xad

Created: 6/15/2012 10:59:27 AM
 Modified: 6/15/2012 11:41:49 AM

Electropherogram Summary Continued ...



Overall Results for sample 7 : #34 Ribo-O Lib 6/14/12 (post adp purif)

Number of peaks found: 3 Corr. Area 1: 453.2
 Noise: 0.2

Peak table for sample 7 : #34 Ribo-O Lib 6/14/12 (post adp purif)

Peak	Size [bp]	Conc. [pg/μl]	Molarity [pmol/l]	Observations
1	35	125.00	5,411.3	Lower Marker
2	255	360.57	2,144.9	
3	280	28.82	155.9	
4	288	115.97	611.1	
5	10,380	75.00	10.9	Upper Marker

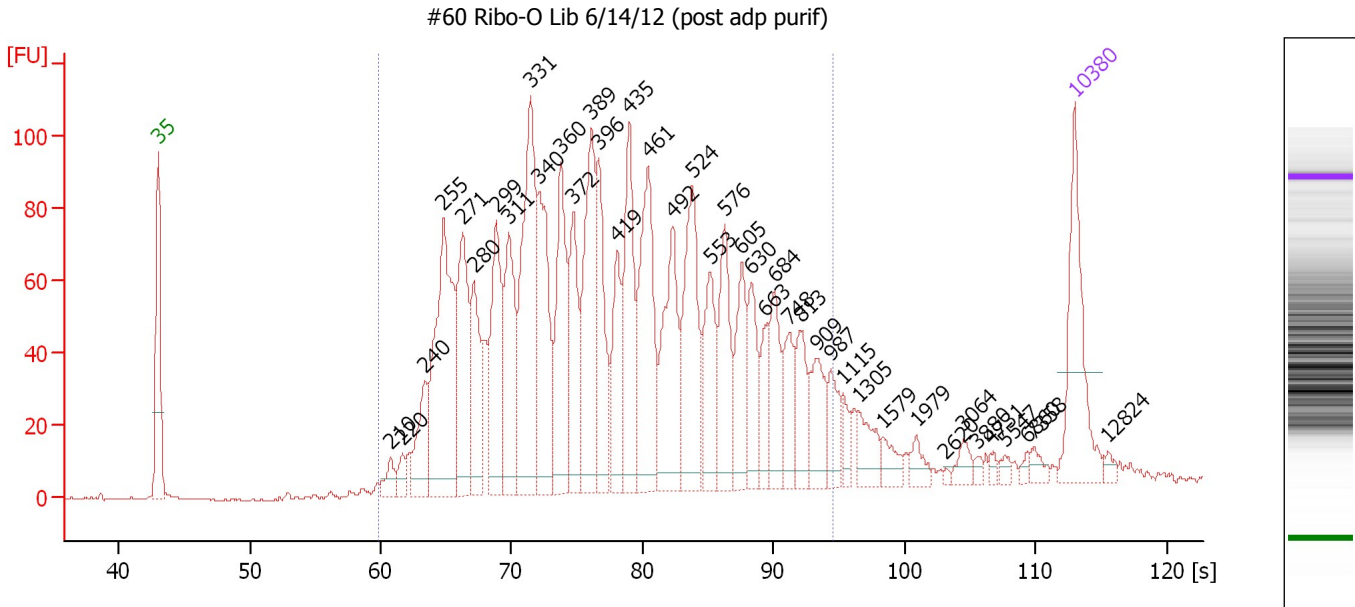
Region table for sample 7 : #34 Ribo-O Lib 6/14/12 (post adp purif)

From [s]	To [s]	Average Size [bp]	Molarity [pmol/l]	Conc. [pg/μl]	Corr. Area	% of Total	Size distribution CV [%]	Color
59.85	74.27	271	2,960.2	523.96	453.2	89	11.3	Blue

Assay Class: High Sensitivity DNA Assay
 Data Path: C:\...ents and Settings\Bioanalyzer\2012-06-15\2012-06-15_002.xad

Created: 6/15/2012 10:59:27 AM
 Modified: 6/15/2012 11:41:49 AM

Electropherogram Summary Continued ...



Overall Results for sample 8 : #60 Ribo-O Lib 6/14/12 (post adp purif)

Number of peaks found: 41 Corr. Area 1: 2,447.6
 Noise: 0.2

Peak table for sample 8 : #60 Ribo-O Lib 6/14/12 (post adp purif)

Peak	Size [bp]	Conc. [pg/μl]	Molarity [pmol/l]	Observations
1	35	125.00	5,411.3	Lower Marker
2	210	17.76	128.2	
3	220	13.81	95.1	
4	240	57.33	362.6	
5	255	212.38	1,263.6	
6	271	121.14	677.9	
7	280	80.20	433.5	
8	299	112.55	569.5	
9	311	103.60	504.4	
10	331	190.16	869.4	
11	340	120.79	538.6	
12	360	116.54	490.4	
13	372	79.35	323.3	
14	389	130.49	507.9	
15	396	89.31	341.7	
16	419	63.76	230.5	
17	435	105.21	366.5	
18	461	135.38	445.4	
19	492	108.94	335.2	
20	524	118.07	341.6	
21	553	67.48	185.0	
22	576	73.61	193.7	
23	605	55.98	140.1	
24	630	48.57	116.8	
25	663	28.23	64.5	
26	684	53.31	118.1	

Assay Class: High Sensitivity DNA Assay
 Data Path: C:\...ents and Settings\Bioanalyzer\2012-06-15\2012-06-15_002.xad


Created: 6/15/2012 10:59:27 AM
 Modified: 6/15/2012 11:41:49 AM

Electropherogram Summary Continued ...

... Peak table for sample 8 : #60 Ribo-O Lib 6/14/12 (post adp purif)

Peak	Size [bp]	Conc. [pg/µl]	Molarity [pmol/l]	Observations
27	748	39.28	79.6	
28	813	38.30	71.4	
29	909	42.75	71.3	
30	987	25.46	39.1	
31	1,115	11.66	15.8	
32	1,305	24.83	28.8	
33	1,579	14.46	13.9	
34	1,979	11.28	8.6	
35	2,620	1.96	1.1	
36	3,064	10.18	5.0	
37	3,880	3.51	1.4	
38	4,731	3.99	1.3	
39	5,547	5.04	1.4	
40	6,860	3.93	0.9	
41	7,358	7.29	1.5	
42	10,380	75.00	10.9	Upper Marker
43	12,824	0.00	0.0	

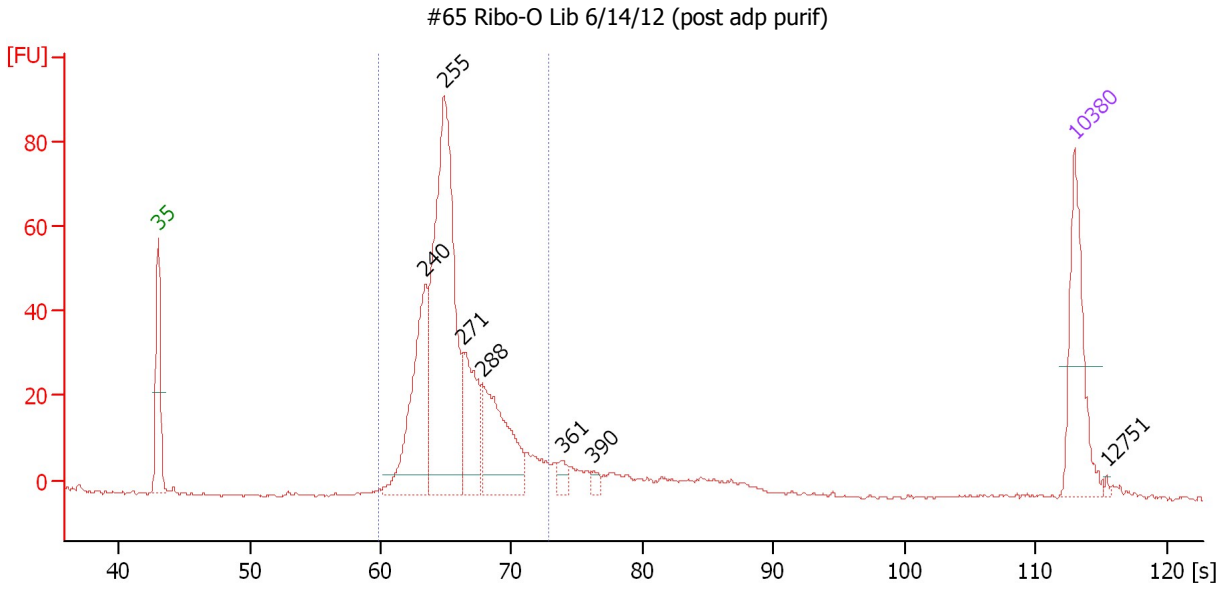
Region table for sample 8 : #60 Ribo-O Lib 6/14/12 (post adp purif)

From [s]	To [s]	Average Size [bp]	Molarity [pmol/l]	Conc. [pg/µl]	Corr. Area % of Total	Size distribution in CV [%]	Color	
59.85	94.56	446	9,845.5	2,442.83	2,447.6	93	37.0	

Assay Class: High Sensitivity DNA Assay
 Data Path: C:\...ents and Settings\Bioanalyzer\2012-06-15\2012-06-15_002.xad

Created: 6/15/2012 10:59:27 AM
 Modified: 6/15/2012 11:41:49 AM

Electropherogram Summary Continued ...



Overall Results for sample 9 : #65 Ribo-O Lib 6/14/12 (post adp purif)

Number of peaks found: 7 Corr. Area 1: 523.8
 Noise: 0.4

Peak table for sample 9 : #65 Ribo-O Lib 6/14/12 (post adp purif)

Peak	Size [bp]	Conc. [pg/μl]	Molarity [pmol/l]	Observations
1	35	125.00	5,411.3	Lower Marker
2	240	165.64	1,047.8	
3	255	383.58	2,277.2	
4	271	93.40	521.4	
5	288	124.83	656.4	
6	361	11.45	48.0	
7	390	7.28	28.3	
8	10,380	75.00	10.9	Upper Marker
9	12,751	0.00	0.0	

Region table for sample 9 : #65 Ribo-O Lib 6/14/12 (post adp purif)

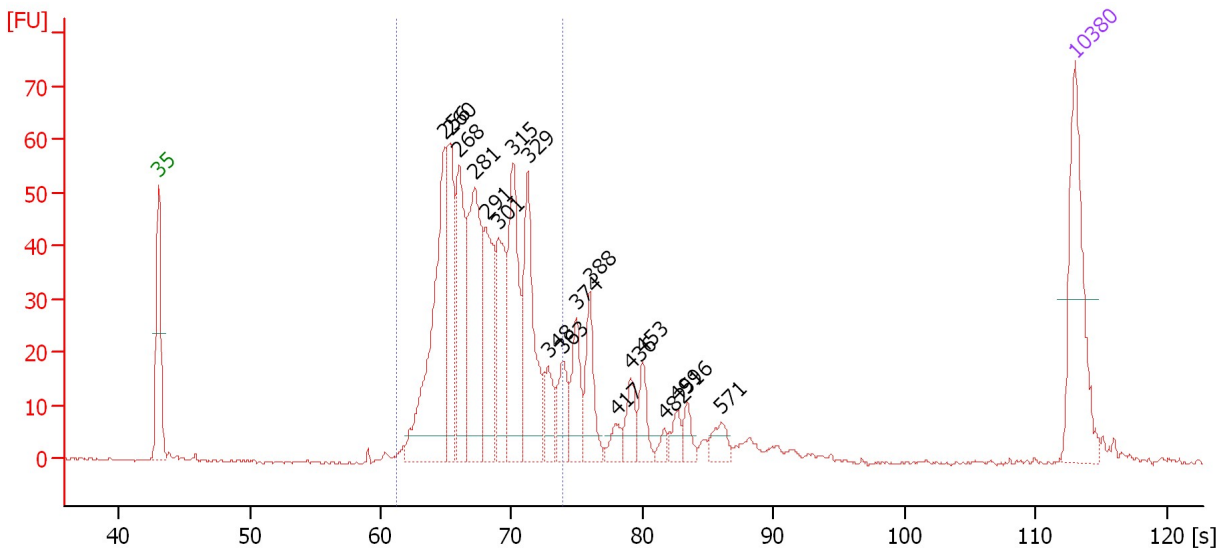
From [s]	To [s]	Average Size [bp]	Molarity [pmol/l]	Conc. [pg/μl]	Corr. Area	% of Total	Size distribution in CV [%]	Color
59.85	72.76	265	4,333.3	750.63	523.8	89	10.3	Blue

Assay Class: High Sensitivity DNA Assay
 Data Path: C:\...ents and Settings\Bioanalyzer\2012-06-15\2012-06-15_002.xad

Created: 6/15/2012 10:59:27 AM
 Modified: 6/15/2012 11:41:49 AM

Electropherogram Summary Continued ...

#37 Ribo-O Lib 6/14/12 (post adp purif)



Overall Results for sample 10 : #37 Ribo-O Lib 6/14/12 (post adp purif)

Number of peaks found: 19 Corr. Area 1: 625.2
 Noise: 0.3

Peak table for sample 10 : #37 Ribo-O Lib 6/14/12 (post adp purif)

Peak	Size [bp]	Conc. [pg/µl]	Molarity [pmol/l]	Observations
1	35	125.00	5,411.3	Lower Marker
2	256	176.48	1,046.0	
3	260	81.33	473.5	
4	268	93.65	529.7	
5	281	134.26	723.6	
6	291	85.93	447.7	
7	301	73.14	368.0	
8	315	106.48	511.6	
9	329	102.92	474.0	
10	348	27.34	118.9	
11	363	31.20	130.4	
12	374	38.28	154.9	
13	388	40.86	159.7	
14	417	12.35	44.9	
15	436	20.97	72.8	
16	453	21.69	72.6	
17	482	6.84	21.5	
18	499	12.03	36.6	
19	516	12.35	36.3	
20	571	14.20	37.7	
21	10,380	75.00	10.9	Upper Marker

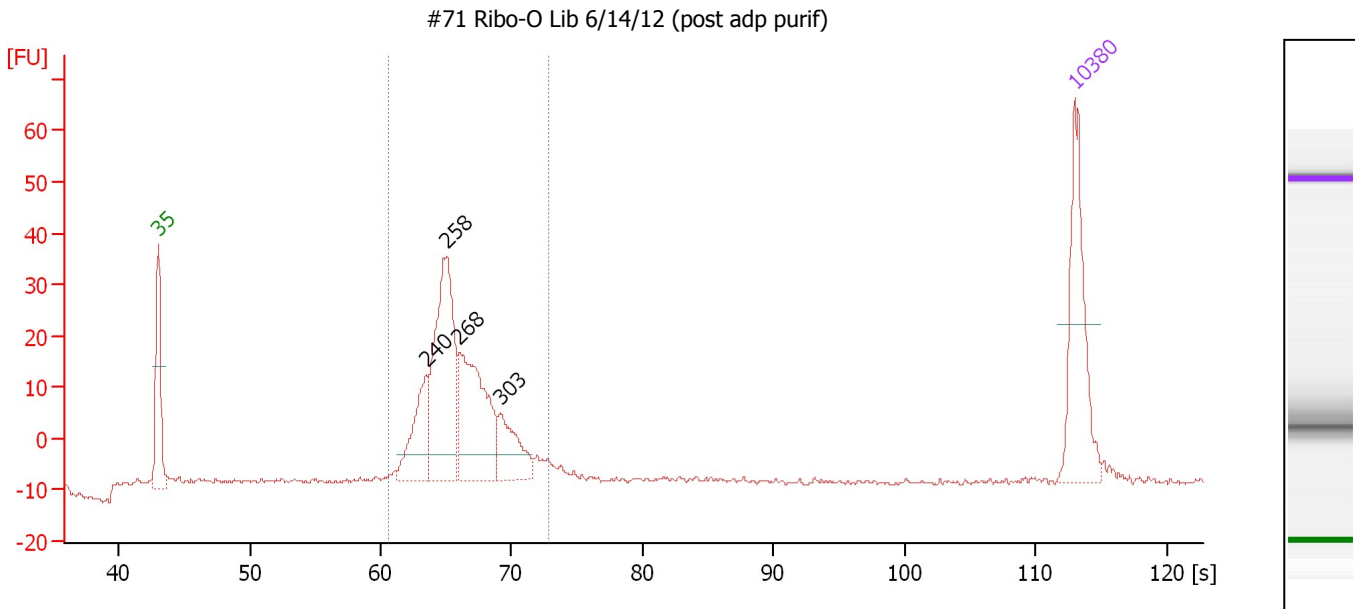
Region table for sample 10 : #37 Ribo-O Lib 6/14/12 (post adp purif)

From [s]	To [s]	Average Size [bp]	Molarity [pmol/l]	Conc. [pg/µl]	Corr. Area % of Total	Size distribution in CV [%]	Color
61.20	73.89	289	4,883.4	919.78	625.2 77	11.1	Blue

Assay Class: High Sensitivity DNA Assay
 Data Path: C:\...ents and Settings\Bioanalyzer\2012-06-15\2012-06-15_002.xad

Created: 6/15/2012 10:59:27 AM
 Modified: 6/15/2012 11:41:49 AM

Electropherogram Summary Continued ...



Overall Results for sample 11 : #71 Ribo-O Lib 6/14/12 (post adp purif)

Number of peaks found: 4 Corr. Area 1: 209.2
 Noise: 0.5

Peak table for sample 11 : #71 Ribo-O Lib 6/14/12 (post adp purif)

Peak	Size [bp]	Conc. [pg/μl]	Molarity [pmol/l]	Observations
1	35	125.00	5,411.3	Lower Marker
2	240	63.88	403.3	
3	258	173.42	1,019.1	
4	268	136.11	769.4	
5	303	48.98	244.9	
6	10,380	75.00	10.9	Upper Marker

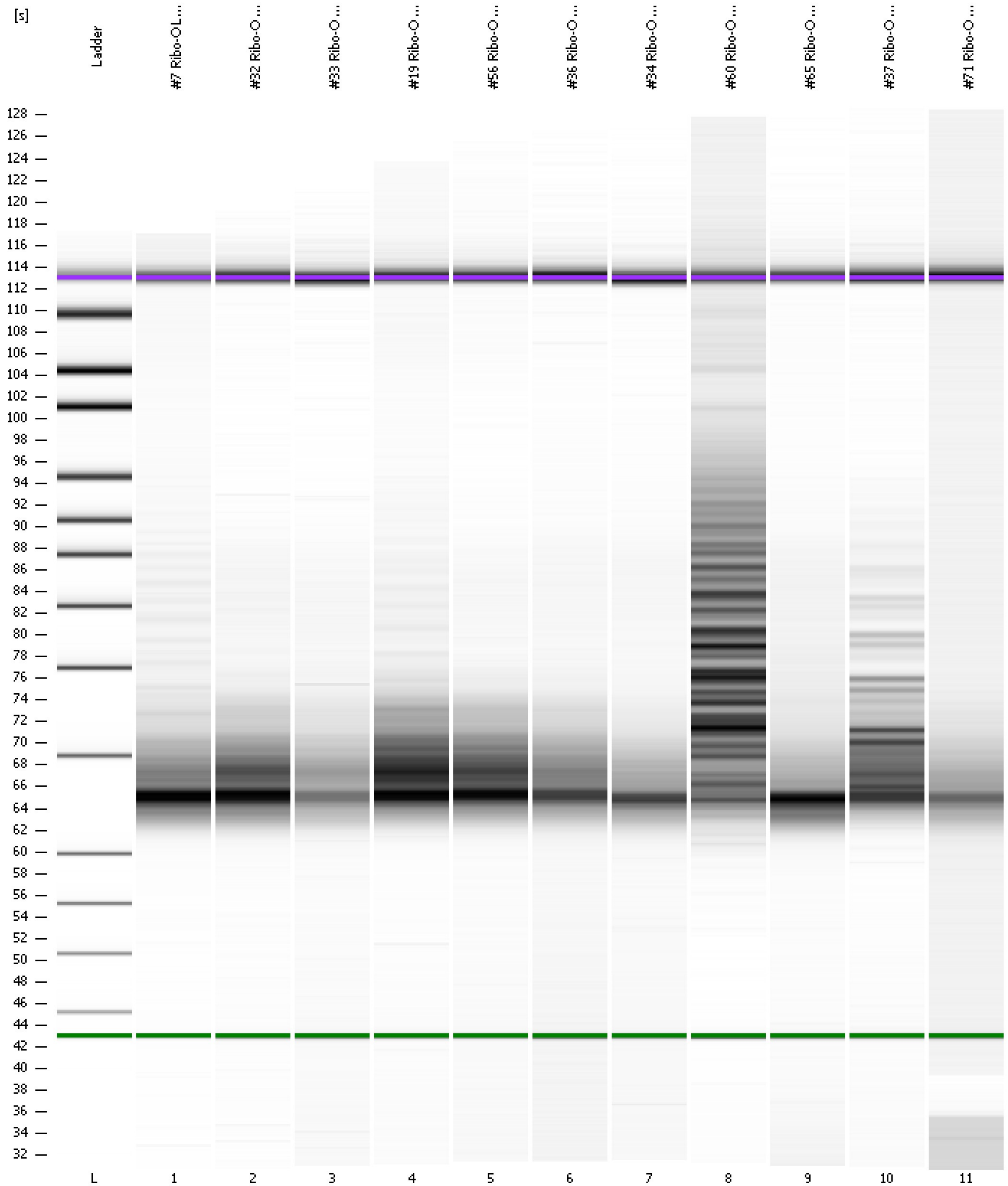
Region table for sample 11 : #71 Ribo-O Lib 6/14/12 (post adp purif)

From [s]	To [s]	Average Size [bp]	Molarity [pmol/l]	Conc. [pg/μl]	Corr. Area	% of Total	Size distribution in CV [%]	Color
60.65	72.85	266	1,783.7	312.38	209.2	95	8.1	Blue

Assay Class: High Sensitivity DNA Assay
Data Path: C:\...ents and Settings\Bioanalyzer\2012-06-15\2012-06-15_002.xad

Created: 6/15/2012 10:59:27 AM
Modified: 6/15/2012 11:41:49 AM

Gel Image



Assay Class: High Sensitivity DNA Assay
 Data Path: C:\...ents and Settings\Bioanalyzer\2012-06-15\2012-06-15_002.xad

Created: 6/15/2012 10:59:27 AM
 Modified: 6/15/2012 11:41:49 AM

Run Logbook

Description	Number	Source	Category	Sub Category	Time	Time Zone	User	Host
Run ended on port 1 (Number of wells acquired: 12)		Instrument	Run		6/15/2012 11:40:47 AM	(GMT --07:00) Pacific Standard Time	UC Davis	D8XSMGH1
Run started on port 1 (File: C:\Documents and Settings\Bioanalyzer\2012-06-15\2012-06-15_002.xad)		Instrument	Run		6/15/2012 10:59:33 AM	(GMT --07:00) Pacific Standard Time	UC Davis	D8XSMGH1
Product Number : G2938B		Instrument	Run		6/15/2012 10:59:33 AM	(GMT --07:00) Pacific Standard Time	UC Davis	D8XSMGH1
Name :		Instrument	Run		6/15/2012 10:59:33 AM	(GMT --07:00) Pacific Standard Time	UC Davis	D8XSMGH1
Vendor : Agilent Technologies		Instrument	Run		6/15/2012 10:59:33 AM	(GMT --07:00) Pacific Standard Time	UC Davis	D8XSMGH1
Serial# : DE13701086		Instrument	Run		6/15/2012 10:59:33 AM	(GMT --07:00) Pacific Standard Time	UC Davis	D8XSMGH1
Firmware : C.01.069		Instrument	Run		6/15/2012 10:59:33 AM	(GMT --07:00) Pacific Standard Time	UC Davis	D8XSMGH1
Cartridge : Electrode		Instrument	Run		6/15/2012 10:59:33 AM	(GMT --07:00) Pacific Standard Time	UC Davis	D8XSMGH1