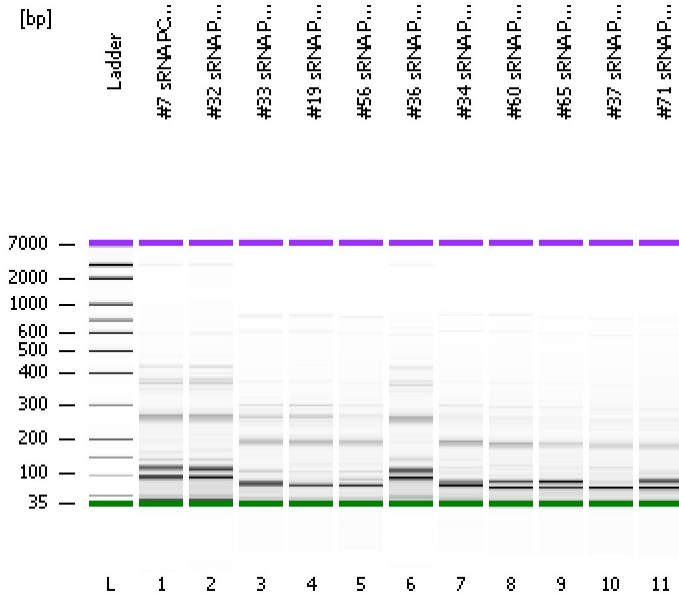


Assay Class: High Sensitivity DNA Assay  
Data Path: C:\...ents and Settings\Bioanalyzer\2012-06-20\2012-06-20\_002.xad

Created: 6/20/2012 10:32:17 AM  
Modified: 6/26/2012 9:49:19 AM

**Electrophoresis File Run Summary**



Instrument Information:

Instrument Name: DE13701086      Firmware: C.01.069  
Serial#: DE13701086      Type: G2938B

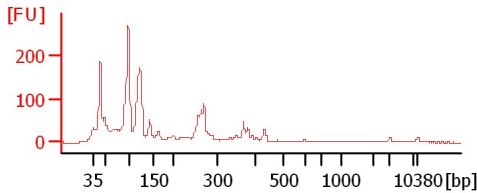
Assay Information:

Assay Origin Path: C:\Program Files\Agilent\2100 bioanalyzer\2100 expert\assays\dsDNA\High Sensitivity DNA.xsy  
Assay Class: High Sensitivity DNA Assay  
Version: 1.03  
Assay Comments: Copyright © 2003-2010 Agilent Technologies

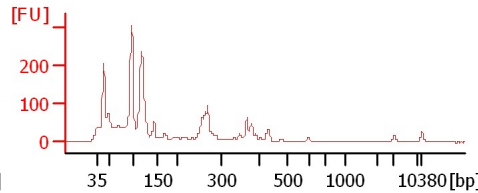
Chip Information:

Chip Lot #:   
Reagent Kit Lot #:   
Chip Comments:

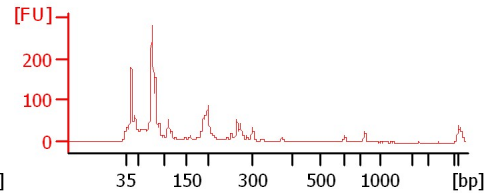
**#7 sRNA PCR 1:2 (6/19/12) 11 CYC**



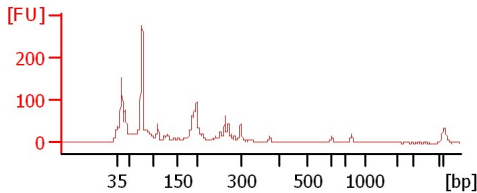
**#32 sRNA PCR 1:2 (6/19/12) 11 CYC**



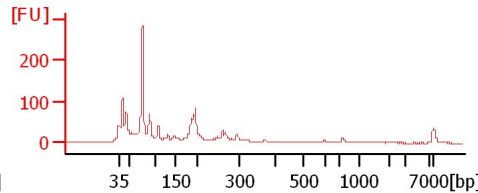
**#33 sRNA PCR 1:2 (6/19/12) 11 CYC**



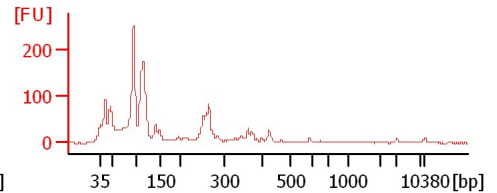
**#19 sRNA PCR 1:2 (6/19/12) 11 CYC**



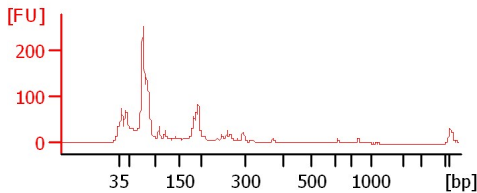
**#56 sRNA PCR 1:2 (6/19/12) 11 CYC**



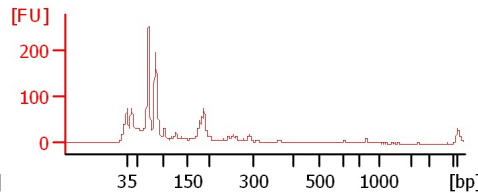
**#36 sRNA PCR 1:2 (6/19/12) 11 CYC**



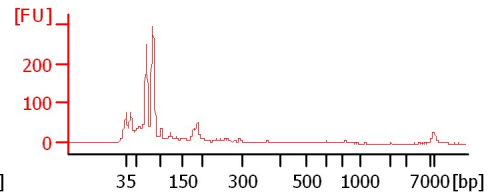
**#34 sRNA PCR 1:2 (6/19/12) 11 CYC**



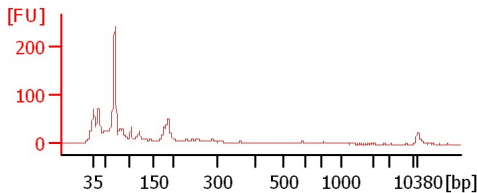
**#60 sRNA PCR 1:2 (6/19/12) 11 CYC**



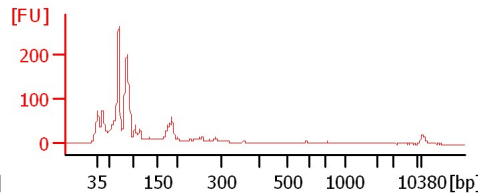
**#65 sRNA PCR 1:2 (6/19/12) 11 CYC**



**#37 sRNA PCR 1:2 (6/19/12) 11 CYC**



**#71 sRNA PCR 1:2 (6/19/12) 11 CYC**



Assay Class: High Sensitivity DNA Assay  
Data Path: C:\...ents and Settings\Bioanalyzer\2012-06-20\2012-06-20\_002.xad

Created: 6/20/2012 10:32:17 AM  
Modified: 6/26/2012 9:49:19 AM

**Electrophoresis File Run Summary (Chip Summary)**

Sample Name	Sample Comment	Rest. Digest	Status	Observation	Result Label	Result Color
#7 sRNA PCR 1:2 (6/19/12) 11 CYC		<input type="checkbox"/>	✓			
#32 sRNA PCR 1:2 (6/19/12) 11 CYC		<input type="checkbox"/>	✓			
#33 sRNA PCR 1:2 (6/19/12) 11 CYC		<input type="checkbox"/>	✓			
#19 sRNA PCR 1:2 (6/19/12) 11 CYC		<input type="checkbox"/>	✓			
#56 sRNA PCR 1:2 (6/19/12) 11 CYC		<input type="checkbox"/>	✓			
#36 sRNA PCR 1:2 (6/19/12) 11 CYC		<input type="checkbox"/>	✓			
#34 sRNA PCR 1:2 (6/19/12) 11 CYC		<input type="checkbox"/>	✓			
#60 sRNA PCR 1:2 (6/19/12) 11 CYC		<input type="checkbox"/>	✓			
#65 sRNA PCR 1:2 (6/19/12) 11 CYC		<input type="checkbox"/>	✓			
#37 sRNA PCR 1:2 (6/19/12) 11 CYC		<input type="checkbox"/>	✓			
#71 sRNA PCR 1:2 (6/19/12) 11 CYC		<input type="checkbox"/>	✓			
Ladder		<input type="checkbox"/>	✓			

**Chip Lot #**

**Reagent Kit Lot #**

**Chip Comments :**

Assay Class: High Sensitivity DNA Assay  
Data Path: C:\...ents and Settings\Bioanalyzer\2012-06-20\2012-06-20\_002.xad

Created: 6/20/2012 10:32:17 AM  
Modified: 6/26/2012 9:49:19 AM

**Electrophoresis Assay Details**

**General Analysis Settings**

Number of Available Sample and Ladder Wells (Max.) : 12  
Minimum Visible Range [s] : 32  
Maximum Visible Range [s] : 138  
Start Analysis Time Range [s] : 33  
End Analysis Time Range [s] : 137.5  
Ladder Concentration [pg/μl] : 1950  
Uses Standard Area for Ladder Fragments  
Lower Marker Concentration [pg/μl] : 125  
Upper Marker Concentration [pg/μl] : 75  
Used Upper Marker for Quantitation  
Standard Curve Fit is Point to Point  
Show Data Aligned to Lower and Upper Marker

**Integrator Settings**

Integration Start Time [s] : 33.05  
Integration End Time [s] : 137  
Slope Threshold : 0.8  
Height Threshold [FU] : 5  
Area Threshold : 0.1  
Width Threshold [s] : 0.6  
Baseline Plateau [s] : 0.5

**Filter Settings**

Filter Width [s] : 0.5  
Polynomial Order : 4

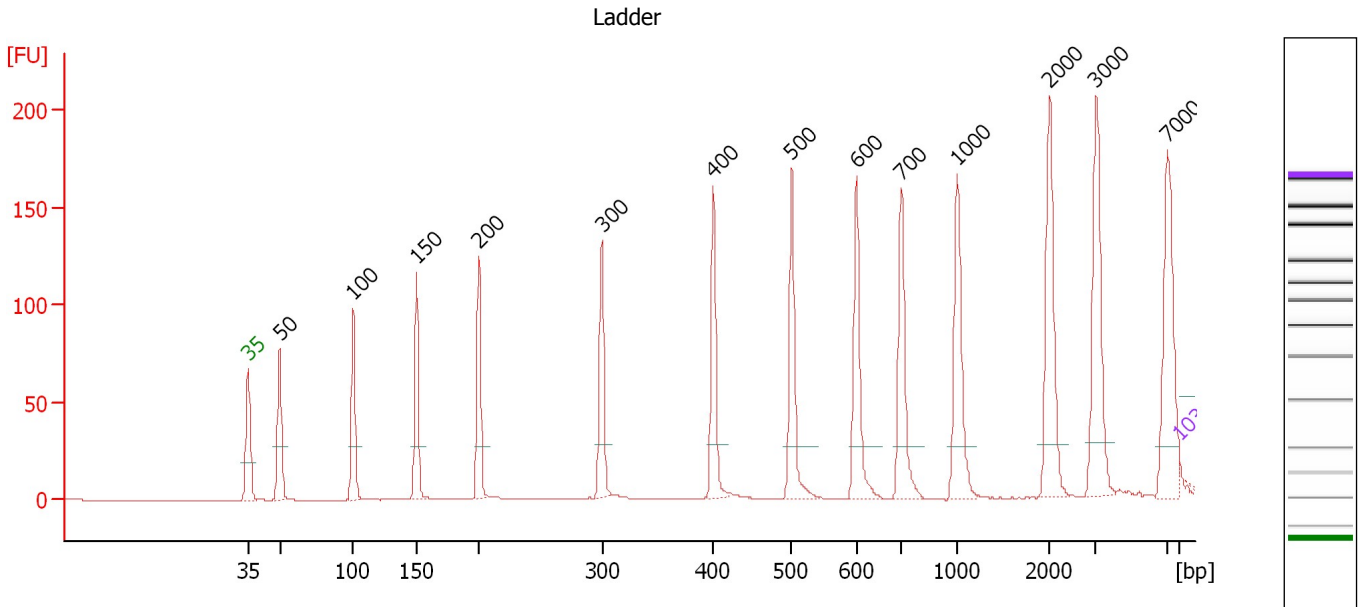
**Ladder**

Ladder Peak	Size	Area
1	35	160
2	50	210
3	100	208
4	150	221
5	200	242
6	300	270
7	400	305
8	500	306
9	600	336
10	700	321
11	1000	366
12	2000	413
13	3000	411
14	7000	400
15	10380	214

Assay Class: High Sensitivity DNA Assay  
 Data Path: C:\...ents and Settings\Bioanalyzer\2012-06-20\2012-06-20\_002.xad

Created: 6/20/2012 10:32:17 AM  
 Modified: 6/26/2012 9:49:19 AM

**Electropherogram Summary**



**Overall Results for Ladder**

Noise: 0.1

**Peak table for Ladder**

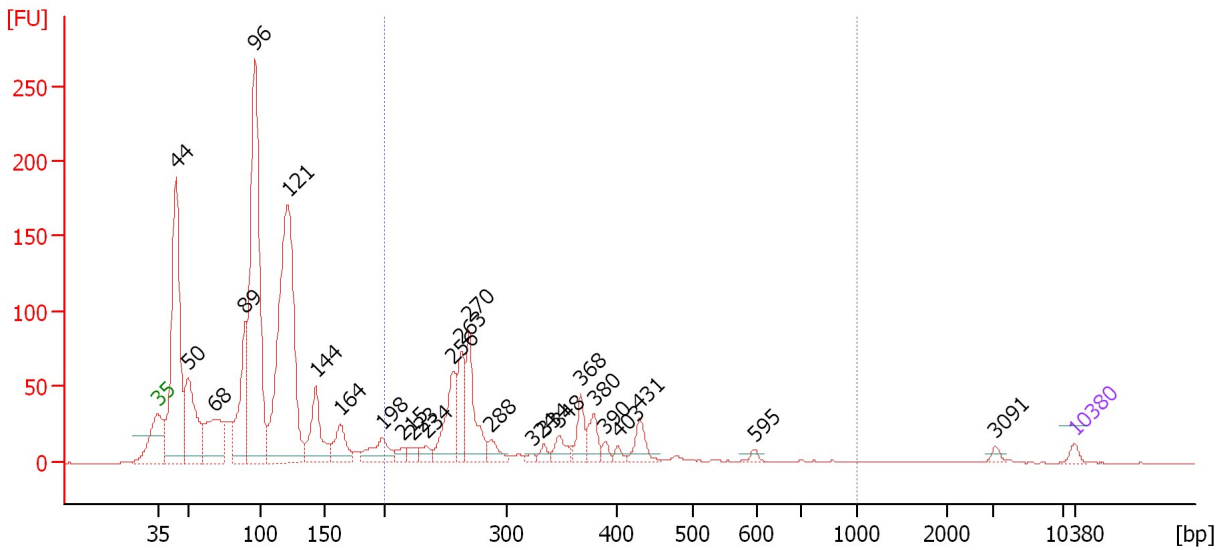
Peak	Size [bp]	Conc. [pg/μl]	Molarity [pmol/l]	Observations
1	35	125.00	5,411.3	Lower Marker
2	50	150.00	4,545.5	Ladder Peak
3	100	150.00	2,272.7	Ladder Peak
4	150	150.00	1,515.2	Ladder Peak
5	200	150.00	1,136.4	Ladder Peak
6	300	150.00	757.6	Ladder Peak
7	400	150.00	568.2	Ladder Peak
8	500	150.00	454.5	Ladder Peak
9	600	150.00	378.8	Ladder Peak
10	700	150.00	324.7	Ladder Peak
11	1,000	150.00	227.3	Ladder Peak
12	2,000	150.00	113.6	Ladder Peak
13	3,000	150.00	75.8	Ladder Peak
14	7,000	150.00	32.5	Ladder Peak
15	10,380	75.00	10.9	Upper Marker
16	17,755	0.00	0.0	

Assay Class: High Sensitivity DNA Assay  
 Data Path: C:\...ents and Settings\Bioanalyzer\2012-06-20\2012-06-20\_002.xad

Created: 6/20/2012 10:32:17 AM  
 Modified: 6/26/2012 9:49:19 AM

**Electropherogram Summary Continued ...**

#7 sRNA PCR 1:2 (6/19/12) 11 CYC



**Overall Results for sample 1 : #7 sRNA PCR 1:2 (6/19/12) 11 CYC**

Number of peaks found: 26                      Corr. Area 1: 482.3  
 Noise: 0.2


**Peak table for sample 1 : #7 sRNA PCR 1:2 (6/19/12) 11 CYC**

Peak	Size [bp]	Conc. [pg/μl]	Molarity [pmol/l]	Observations
1	35	125.00	5,411.3	Lower Marker
2	44	4,890.83	168,444.3	
3	50	1,990.37	60,733.2	
4	68	1,482.94	33,264.7	
5	89	1,762.37	30,035.0	
6	96	6,975.80	110,069.3	
7	121	6,974.82	87,150.0	
8	144	1,273.93	13,420.0	
9	164	655.50	6,060.4	
10	198	604.41	4,624.4	
11	215	195.74	1,382.5	
12	223	174.54	1,185.6	
13	234	212.81	1,378.6	
14	256	1,143.10	6,763.0	
15	263	904.26	5,210.8	
16	270	1,311.75	7,367.5	
17	288	277.00	1,457.3	
18	324	74.82	350.1	
19	334	126.57	573.4	
20	348	286.20	1,245.3	
21	368	423.87	1,743.9	
22	380	397.35	1,583.6	
23	390	115.51	448.5	
24	403	91.94	345.6	
25	431	381.08	1,340.8	
26	595	57.88	147.5	


Assay Class: High Sensitivity DNA Assay  
Data Path: C:\...ents and Settings\Bioanalyzer\2012-06-20\2012-06-20\_002.xad

Created: 6/20/2012 10:32:17 AM  
Modified: 6/26/2012 9:49:19 AM

**Electropherogram Summary Continued ...****... Peak table for sample 1 : #7 sRNA PCR 1:2 (6/19/12) 11 CYC**

Peak	Size [bp]	Conc. [pg/μl]	Molarity [pmol/l]	Observations
27	3,091	61.70	30.2	
28	 10,380	75.00	10.9	Upper Marker

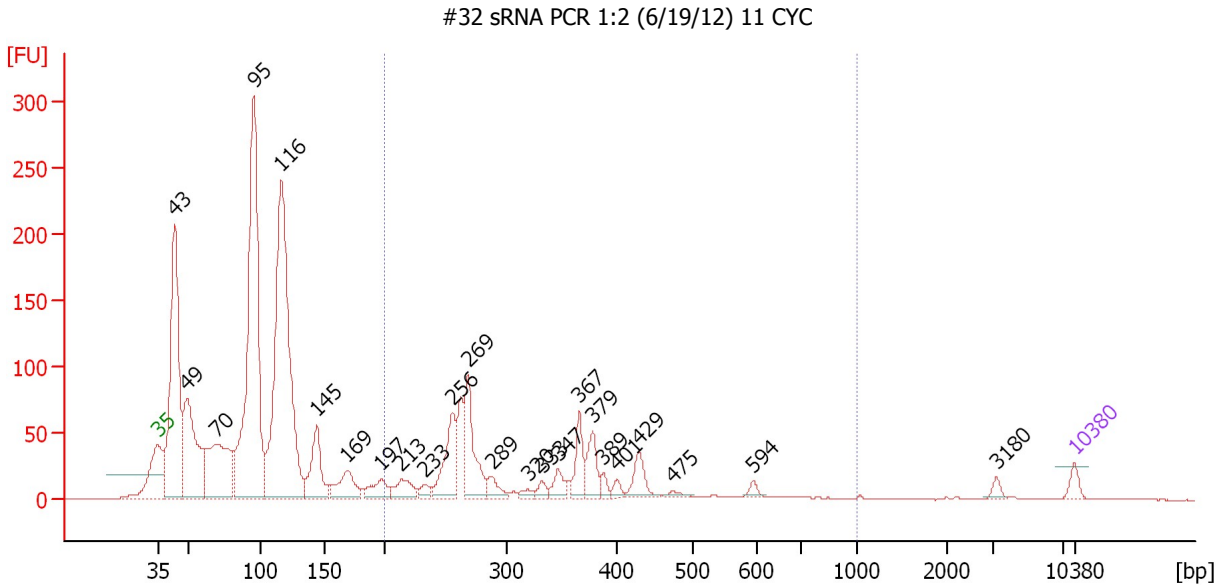
**Region table for sample 1 : #7 sRNA PCR 1:2 (6/19/12) 11 CYC**

From [bp]	To [bp]	Average Size [bp]	Molarity [pmol/l]	Conc. [pg/μl]	Corr. Area	% of Total	Size distribution in CV [%]	Color
200	1,000	320	34,849.7	6,740.61	482.3	24	29.6	

Assay Class: High Sensitivity DNA Assay  
 Data Path: C:\...ents and Settings\Bioanalyzer\2012-06-20\2012-06-20\_002.xad

Created: 6/20/2012 10:32:17 AM  
 Modified: 6/26/2012 9:49:19 AM

**Electropherogram Summary Continued ...**



**Setpoint Deviations for sample 2 : #32 sRNA PCR 1:2 (6/19/12) 11 CYC**

Height Threshold [FU] : 2

**Overall Results for sample 2 : #32 sRNA PCR 1:2 (6/19/12) 11 CYC**

Number of peaks found: 24                      Corr. Area 1: 596.9  
 Noise: 0.3

**Peak table for sample 2 : #32 sRNA PCR 1:2 (6/19/12) 11 CYC**

Peak	Size [bp]	Conc. [pg/μl]	Molarity [pmol/l]	Observations
1	35	125.00	5,411.3	Lower Marker
2	43	2,730.82	95,539.0	
3	49	1,545.10	47,495.8	
4	70	1,336.25	28,995.2	
5	95	4,502.07	71,859.1	
6	116	4,497.73	58,705.0	
7	145	631.76	6,617.7	
8	169	396.92	3,555.8	
9	197	227.45	1,748.8	
10	213	240.72	1,708.4	
11	233	94.15	611.2	
12	256	590.87	3,503.4	
13	269	738.09	4,163.3	
14	289	147.68	775.6	
15	320	54.82	259.7	
16	333	76.22	346.8	
17	347	168.17	733.5	
18	367	325.38	1,344.1	
19	379	287.48	1,150.3	
20	389	82.84	322.9	
21	401	66.84	252.7	
22	429	236.08	833.3	

Assay Class: High Sensitivity DNA Assay  
 Data Path: C:\...ents and Settings\Bioanalyzer\2012-06-20\2012-06-20\_002.xad

Created: 6/20/2012 10:32:17 AM  
 Modified: 6/26/2012 9:49:19 AM

### Electropherogram Summary Continued ...

#### ... Peak table for sample 2 : #32 sRNA PCR 1:2 (6/19/12) 11 CYC

Peak	Size [bp]	Conc. [pg/μl]	Molarity [pmol/l]	Observations
23	475	46.50	148.4	
24	594	49.44	126.2	
25	3,180	49.82	23.7	
26	10,380	75.00	10.9	Upper Marker

#### Region table for sample 2 : #32 sRNA PCR 1:2 (6/19/12) 11 CYC

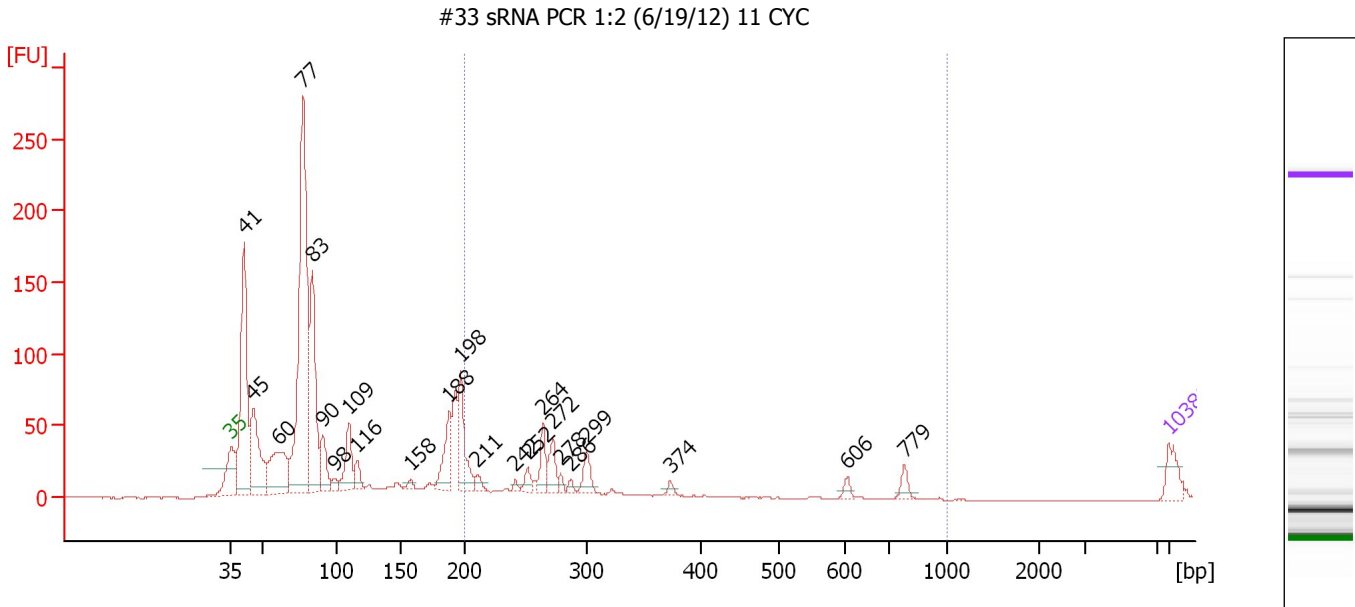
From [bp]	To [bp]	Average Size [bp]	Molarity [pmol/l]	Conc. [pg/μl]	Corr. Area	% of Total	Size distribution in CV [%]	Color
200	1,000	335	20,320.2	4,044.35	596.9	25	31.6	



Assay Class: High Sensitivity DNA Assay  
 Data Path: C:\...ents and Settings\Bioanalyzer\2012-06-20\2012-06-20\_002.xad

Created: 6/20/2012 10:32:17 AM  
 Modified: 6/26/2012 9:49:19 AM

**Electropherogram Summary Continued ...**



**Overall Results for sample 3 : #33 sRNA PCR 1:2 (6/19/12) 11 CYC**

Number of peaks found: 23                      Corr. Area 1: 242.7  
 Noise: 0.2

**Peak table for sample 3 : #33 sRNA PCR 1:2 (6/19/12) 11 CYC**

Peak	Size [bp]	Conc. [pg/μl]	Molarity [pmol/l]	Observations
1	35	125.00	5,411.3	Lower Marker
2	41	1,086.08	40,084.0	
3	45	530.36	17,723.0	
4	60	440.21	11,069.7	
5	77	1,894.06	37,199.0	
6	83	760.87	13,846.6	
7	90	194.87	3,264.4	
8	98	40.66	626.3	
9	109	224.60	3,112.1	
10	116	83.10	1,089.2	
11	158	25.27	242.6	
12	188	230.05	1,850.6	
13	198	295.20	2,262.6	
14	211	39.34	282.5	
15	242	19.09	119.7	
16	252	55.66	335.2	
17	264	115.14	660.7	
18	272	112.59	627.6	
19	278	25.10	136.6	
20	286	22.03	116.5	
21	299	94.75	480.1	
22	374	21.49	87.1	
23	606	26.96	67.4	
24	779	43.66	84.9	
25	10,380	75.00	10.9	Upper Marker

Assay Class: High Sensitivity DNA Assay  
Data Path: C:\...ents and Settings\Bioanalyzer\2012-06-20\2012-06-20\_002.xad

Created: 6/20/2012 10:32:17 AM  
Modified: 6/26/2012 9:49:19 AM

**Electropherogram Summary Continued ...**

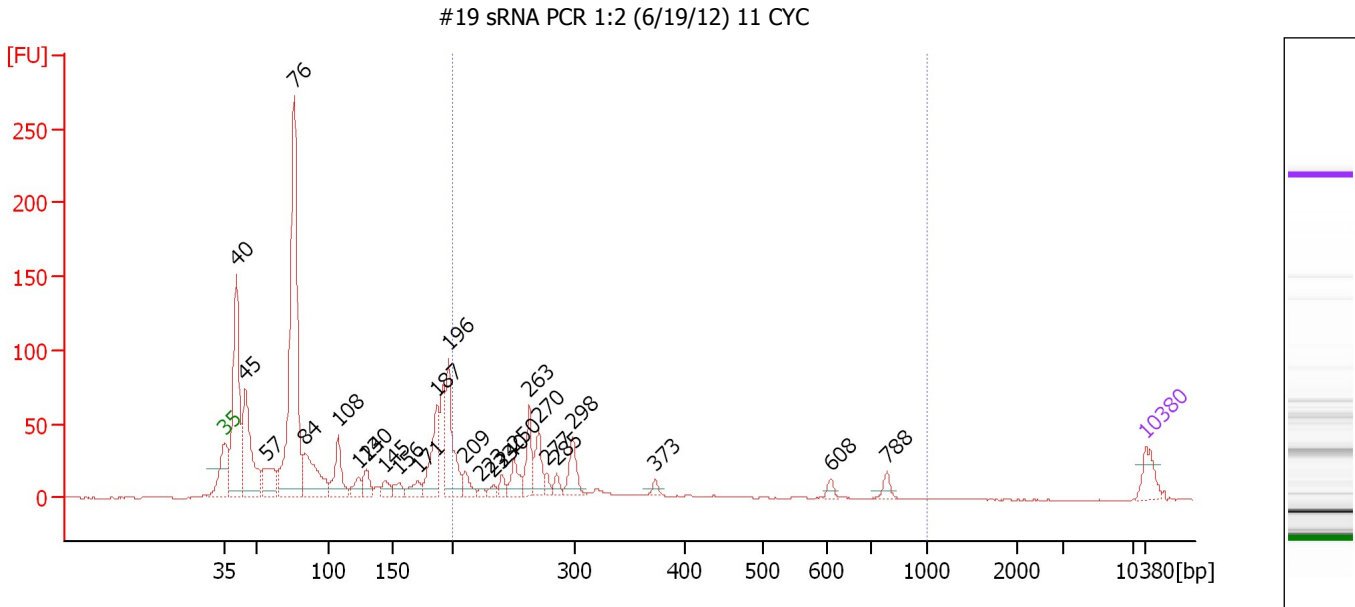
... Region table for sample 3 : #33 sRNA PCR 1:2 (6/19/12) 11 CYC

From [bp]	To [bp]	Average Size [bp]	Molarity [pmol/l]	Conc. [pg/μl]	Corr. Area	% of Total	Size distribution in CV [%]	Color
200	1,000	305	4,614.2	814.34	242.7	14	46.8	■

Assay Class: High Sensitivity DNA Assay  
 Data Path: C:\...ents and Settings\Bioanalyzer\2012-06-20\2012-06-20\_002.xad

Created: 6/20/2012 10:32:17 AM  
 Modified: 6/26/2012 9:49:19 AM

**Electropherogram Summary Continued ...**



**Overall Results for sample 4 : #19 sRNA PCR 1:2 (6/19/12) 11 CYC**

Number of peaks found: 26                      Corr. Area 1: 343.0  
 Noise: 0.2

**Peak table for sample 4 : #19 sRNA PCR 1:2 (6/19/12) 11 CYC**

Peak	Size [bp]	Conc. [pg/μl]	Molarity [pmol/l]	Observations
1	35	125.00	5,411.3	Lower Marker
2	40	990.33	37,145.9	
3	45	633.14	21,431.4	
4	57	228.72	6,060.7	
5	76	1,827.98	36,339.8	
6	84	416.49	7,554.0	
7	108	237.86	3,347.6	
8	124	80.40	984.1	
9	130	97.23	1,131.8	
10	145	65.08	679.9	
11	156	59.83	580.6	
12	171	76.32	675.1	
13	187	300.27	2,435.3	
14	196	383.51	2,966.5	
15	209	77.09	557.7	
16	223	20.18	137.4	
17	233	29.18	189.6	
18	240	41.83	263.9	
19	250	113.06	684.4	
20	263	158.36	913.8	
21	270	142.29	797.0	
22	277	37.79	207.0	
23	285	39.88	212.0	
24	298	142.95	726.4	
25	373	24.72	100.4	
26	608	24.18	60.2	

Assay Class: High Sensitivity DNA Assay  
 Data Path: C:\...ents and Settings\Bioanalyzer\2012-06-20\2012-06-20\_002.xad


Created: 6/20/2012 10:32:17 AM  
 Modified: 6/26/2012 9:49:19 AM

### Electropherogram Summary Continued ...

#### ... Peak table for sample 4 : #19 sRNA PCR 1:2 (6/19/12) 11 CYC

Peak	Size [bp]	Conc. [pg/μl]	Molarity [pmol/l]	Observations
27	788	34.35	66.1	
28	 10,380	75.00	10.9	Upper Marker

#### Region table for sample 4 : #19 sRNA PCR 1:2 (6/19/12) 11 CYC

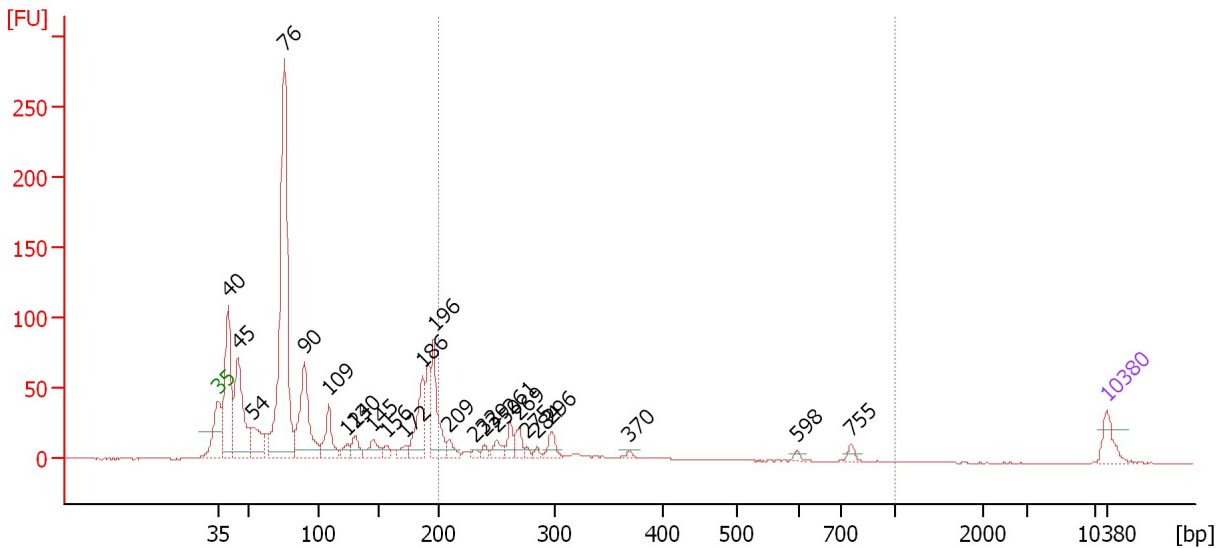
From [bp]	To [bp]	Average Size [bp]	Molarity [pmol/l]	Conc. [pg/μl]	Corr. Area	% of Total	Size distribution in CV [%]	Color
200	1,000	313	6,569.9	1,194.18	343.0	21	43.4	

Assay Class: High Sensitivity DNA Assay  
 Data Path: C:\...ents and Settings\Bioanalyzer\2012-06-20\2012-06-20\_002.xad

Created: 6/20/2012 10:32:17 AM  
 Modified: 6/26/2012 9:49:19 AM

**Electropherogram Summary Continued ...**

#56 sRNA PCR 1:2 (6/19/12) 11 CYC



**Overall Results for sample 5 : #56 sRNA PCR 1:2 (6/19/12) 11 CYC**

Number of peaks found: 25                      Corr. Area 1: 245.0  
 Noise: 0.2

**Peak table for sample 5 : #56 sRNA PCR 1:2 (6/19/12) 11 CYC**

Peak	Size [bp]	Conc. [pg/μl]	Molarity [pmol/l]	Observations
1	35	125.00	5,411.3	Lower Marker
2	40	729.86	27,605.0	
3	45	649.27	21,932.5	
4	54	228.16	6,441.2	
5	76	1,976.27	39,367.9	
6	90	588.81	9,901.4	
7	109	223.70	3,116.2	
8	124	52.02	634.8	
9	130	86.48	1,005.4	
10	145	108.21	1,128.4	
11	156	37.22	360.5	
12	172	47.72	420.2	
13	186	287.48	2,336.8	
14	196	335.64	2,591.5	
15	209	59.25	428.7	
16	232	20.19	132.0	
17	239	27.95	176.9	
18	250	60.07	364.2	
19	261	70.56	409.2	
20	269	73.62	414.6	
21	275	16.14	88.8	
22	284	17.44	93.2	
23	296	65.99	337.4	
24	370	13.29	54.5	
25	598	13.66	34.6	
26	755	25.99	52.2	

Assay Class: High Sensitivity DNA Assay  
 Data Path: C:\...ents and Settings\Bioanalyzer\2012-06-20\2012-06-20\_002.xad

Created: 6/20/2012 10:32:17 AM  
 Modified: 6/26/2012 9:49:19 AM

### Electropherogram Summary Continued ...

#### ... Peak table for sample 5 : #56 sRNA PCR 1:2 (6/19/12) 11 CYC

Peak	Size [bp]	Conc. [pg/μl]	Molarity [pmol/l]	Observations
27	10,380	75.00	10.9	Upper Marker

#### Region table for sample 5 : #56 sRNA PCR 1:2 (6/19/12) 11 CYC

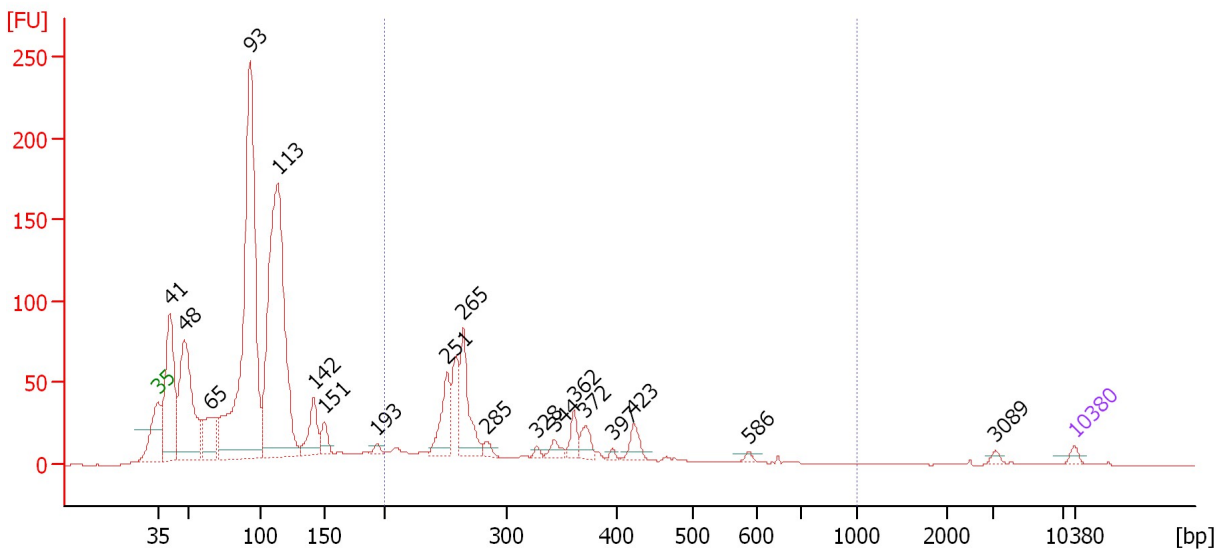
From [bp]	To [bp]	Average Size [bp]	Molarity [pmol/l]	Conc. [pg/μl]	Corr. Area	% of Total	Size distribution in CV [%]	Color
200	1,000	324	4,728.0	866.07	245.0	16	44.6	

Assay Class: High Sensitivity DNA Assay  
 Data Path: C:\...ents and Settings\Bioanalyzer\2012-06-20\2012-06-20\_002.xad

Created: 6/20/2012 10:32:17 AM  
 Modified: 6/26/2012 9:49:19 AM

**Electropherogram Summary Continued ...**

#36 sRNA PCR 1:2 (6/19/12) 11 CYC



**Overall Results for sample 6 : #36 sRNA PCR 1:2 (6/19/12) 11 CYC**

Number of peaks found: 19      Corr. Area 1: 442.3  
 Noise: 0.2

**Peak table for sample 6 : #36 sRNA PCR 1:2 (6/19/12) 11 CYC**

Peak	Size [bp]	Conc. [pg/μl]	Molarity [pmol/l]	Observations
1	35	125.00	5,411.3	Lower Marker
2	41	2,872.85	106,037.3	
3	48	3,300.81	103,958.9	
4	65	1,077.05	25,096.3	
5	93	9,316.87	152,107.5	
6	113	7,935.01	106,095.8	
7	142	820.25	8,739.6	
8	151	346.70	3,489.4	
9	193	99.34	780.2	
10	251	933.49	5,625.6	
11	265	1,313.68	7,521.3	
12	285	129.66	689.9	
13	328	70.89	327.4	
14	344	197.57	870.4	
15	362	292.64	1,226.0	
16	372	295.27	1,201.3	
17	397	58.18	222.0	
18	423	300.98	1,078.5	
19	586	65.43	169.2	
20	3,089	56.13	27.5	
21	10,380	75.00	10.9	Upper Marker

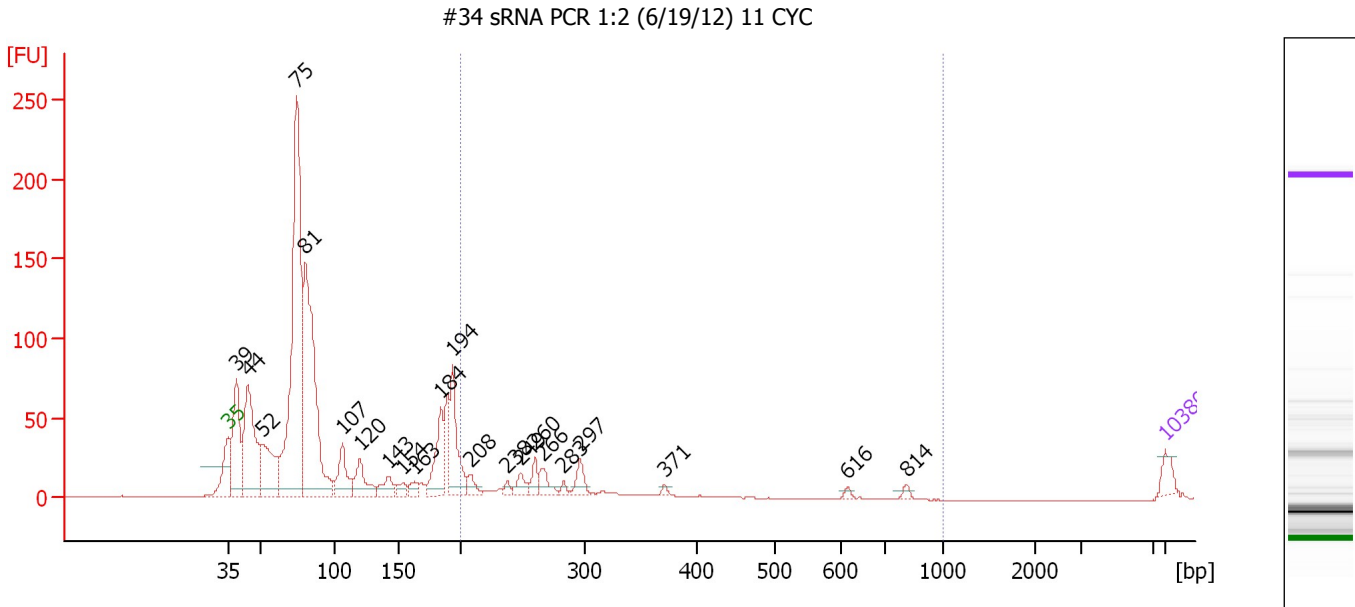
**Region table for sample 6 : #36 sRNA PCR 1:2 (6/19/12) 11 CYC**

From [bp]	To [bp]	Average Size [bp]	Molarity [pmol/l]	Conc. [pg/μl]	Corr. Area	% of Total	Size distribution in CV [%]	Color
200	1,000	325	35,467.9	6,829.62	442.3	23	33.1	Blue

Assay Class: High Sensitivity DNA Assay  
 Data Path: C:\...ents and Settings\Bioanalyzer\2012-06-20\2012-06-20\_002.xad

Created: 6/20/2012 10:32:17 AM  
 Modified: 6/26/2012 9:49:19 AM

**Electropherogram Summary Continued ...**



**Overall Results for sample 7 : #34 sRNA PCR 1:2 (6/19/12) 11 CYC**

Number of peaks found: 22                      Corr. Area 1: 188.7  
 Noise: 0.1

**Peak table for sample 7 : #34 sRNA PCR 1:2 (6/19/12) 11 CYC**

Peak	Size [bp]	Conc. [pg/μl]	Molarity [pmol/l]	Observations
1	35	125.00	5,411.3	Lower Marker
2	39	846.83	33,079.6	
3	44	1,196.62	40,887.5	
4	52	606.49	17,667.1	
5	75	3,209.03	64,791.6	
6	81	2,320.90	43,520.9	
7	107	353.21	5,004.1	
8	120	290.71	3,661.5	
9	143	148.86	1,579.1	
10	154	74.83	735.4	
11	163	81.19	754.3	
12	184	441.72	3,631.3	
13	194	552.24	4,311.5	
14	208	98.89	719.6	
15	238	45.54	289.9	
16	249	107.49	654.6	
17	260	101.52	590.5	
18	266	122.58	698.0	
19	283	35.42	189.4	
20	297	127.28	649.9	
21	371	20.78	84.8	
22	616	22.88	56.3	
23	814	28.17	52.4	
24	10,380	75.00	10.9	Upper Marker



Assay Class: High Sensitivity DNA Assay  
Data Path: C:\...ents and Settings\Bioanalyzer\2012-06-20\2012-06-20\_002.xad

Created: 6/20/2012 10:32:17 AM  
Modified: 6/26/2012 9:49:19 AM

**Electropherogram Summary Continued ...**

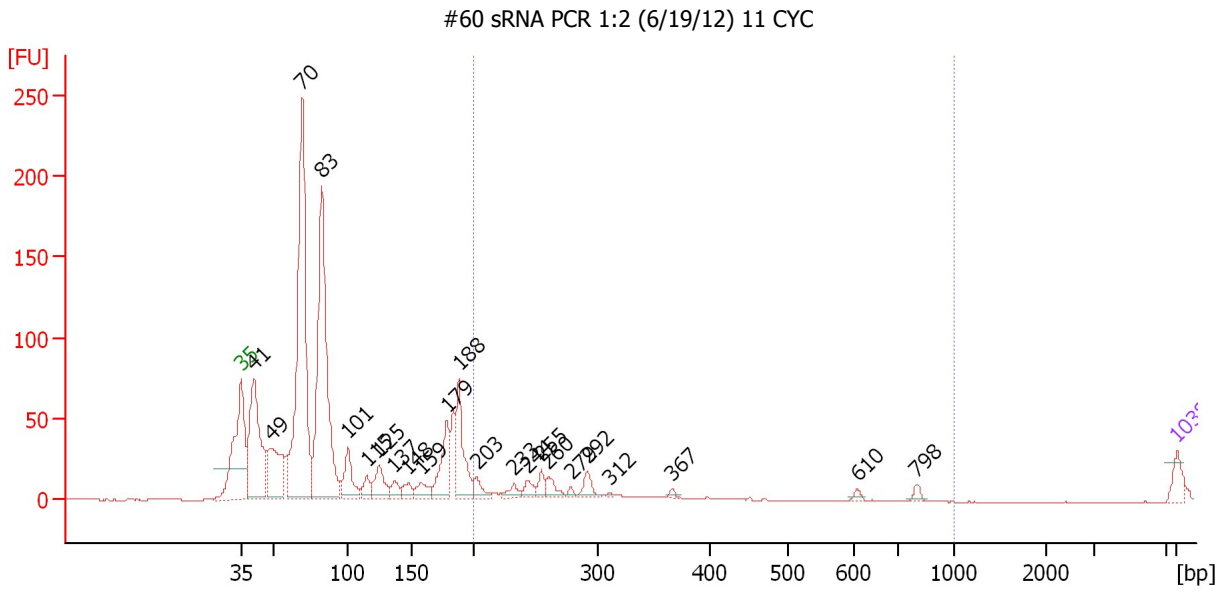
... Region table for sample 7 : **#34 sRNA PCR 1:2 (6/19/12) 11 CYC**

From [bp]	To [bp]	Average Size [bp]	Molarity [pmol/l]	Conc. [pg/μl]	Corr. Area	% of Total	Size distribution in CV [%]	Color
200	1,000	296	5,845.9	1,032.40	188.7	11	41.0	■

Assay Class: High Sensitivity DNA Assay  
 Data Path: C:\...ents and Settings\Bioanalyzer\2012-06-20\2012-06-20\_002.xad

Created: 6/20/2012 10:32:17 AM  
 Modified: 6/26/2012 9:49:19 AM

**Electropherogram Summary Continued ...**



**Setpoint Deviations for sample 8 : #60 sRNA PCR 1:2 (6/19/12) 11 CYC**

Height Threshold [FU] : 2

**Overall Results for sample 8 : #60 sRNA PCR 1:2 (6/19/12) 11 CYC**

Number of peaks found: 23                      Corr. Area 1: 87.3  
 Noise: 0.2

**Peak table for sample 8 : #60 sRNA PCR 1:2 (6/19/12) 11 CYC**


Peak	Size [bp]	Conc. [pg/μl]	Molarity [pmol/l]	Observations
1	35	125.00	5,411.3	Lower Marker
2	41	1,311.26	48,678.1	
3	49	648.32	20,086.5	
4	70	2,986.65	64,931.6	
5	83	2,478.66	45,235.6	
6	101	331.09	4,977.6	
7	115	110.42	1,449.8	
8	125	250.06	3,020.6	
9	137	95.60	1,056.3	
10	148	98.37	1,007.1	
11	159	127.40	1,217.2	
12	179	392.45	3,322.4	
13	188	542.82	4,367.2	
14	203	102.87	768.5	
15	233	76.47	497.1	
16	244	80.81	502.0	
17	255	77.46	460.0	
18	260	97.31	566.4	
19	279	25.66	139.4	
20	292	101.43	526.5	
21	312	10.16	49.3	
22	367	20.09	82.9	

Assay Class: High Sensitivity DNA Assay  
 Data Path: C:\...ents and Settings\Bioanalyzer\2012-06-20\2012-06-20\_002.xad

Created: 6/20/2012 10:32:17 AM  
 Modified: 6/26/2012 9:49:19 AM

### Electropherogram Summary Continued ...

#### ... Peak table for sample 8 : #60 sRNA PCR 1:2 (6/19/12) 11 CYC

Peak	Size [bp]	Conc. [pg/μl]	Molarity [pmol/l]	Observations
23	610	22.19	55.1	
24	798	31.01	58.8	
25	 10,380	75.00	10.9	Upper Marker

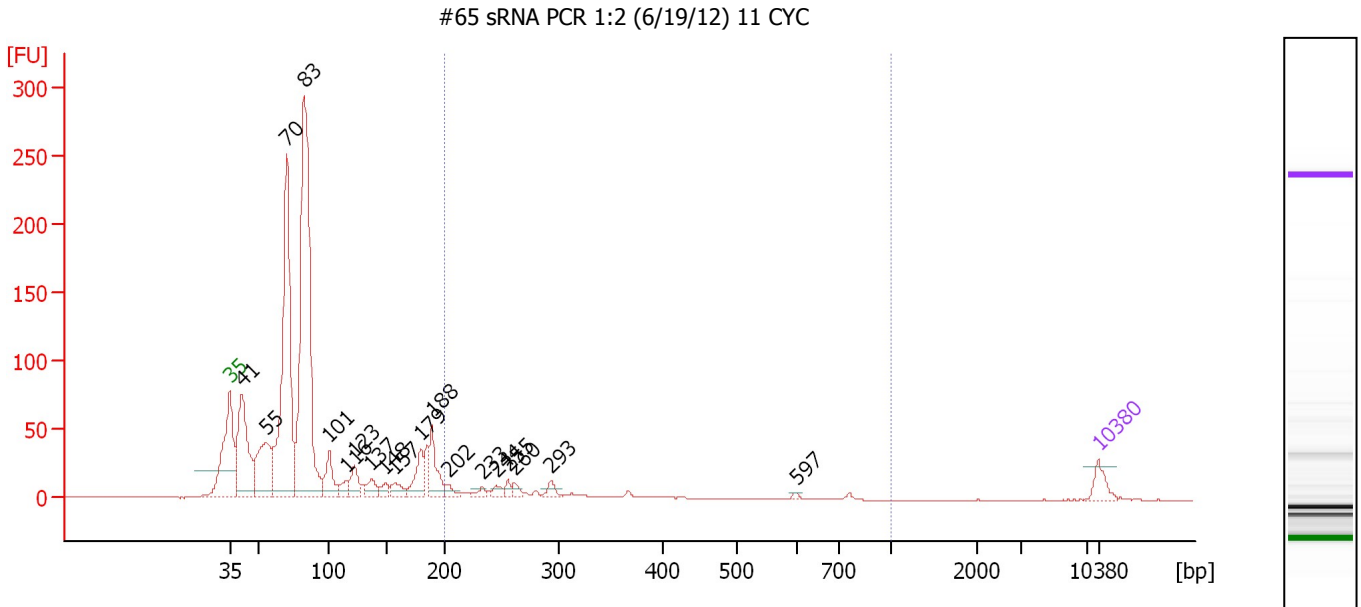
#### Region table for sample 8 : #60 sRNA PCR 1:2 (6/19/12) 11 CYC

From [bp]	To [bp]	Average Size [bp]	Molarity [pmol/l]	Conc. [pg/μl]	Corr. Area	% of Total	Size distribution in CV [%]	Color
200	1,000	278	2,944.7	499.75	87.3	6	40.4	

Assay Class: High Sensitivity DNA Assay  
 Data Path: C:\...ents and Settings\Bioanalyzer\2012-06-20\2012-06-20\_002.xad

Created: 6/20/2012 10:32:17 AM  
 Modified: 6/26/2012 9:49:19 AM

**Electropherogram Summary Continued ...**



**Overall Results for sample 9 : #65 sRNA PCR 1:2 (6/19/12) 11 CYC**

Number of peaks found: 19      Corr. Area 1: 140.3  
 Noise: 0.2

**Peak table for sample 9 : #65 sRNA PCR 1:2 (6/19/12) 11 CYC**

Peak	Size [bp]	Conc. [pg/μl]	Molarity [pmol/l]	Observations
1	35	125.00	5,411.3	Lower Marker
2	41	974.70	35,789.4	
3	55	660.19	18,182.0	
4	70	2,242.01	48,423.2	
5	83	3,111.98	56,836.0	
6	101	251.32	3,755.5	
7	116	89.70	1,173.7	
8	123	162.58	2,010.1	
9	137	108.34	1,198.6	
10	148	67.37	688.8	
11	157	105.65	1,020.5	
12	179	218.86	1,854.2	
13	188	287.27	2,309.6	
14	202	52.21	391.2	
15	233	40.89	266.5	
16	244	46.89	291.0	
17	255	41.16	244.7	
18	260	44.09	256.5	
19	293	52.10	269.8	
20	597	10.90	27.7	
21	10,380	75.00	10.9	Upper Marker

**Region table for sample 9 : #65 sRNA PCR 1:2 (6/19/12) 11 CYC**

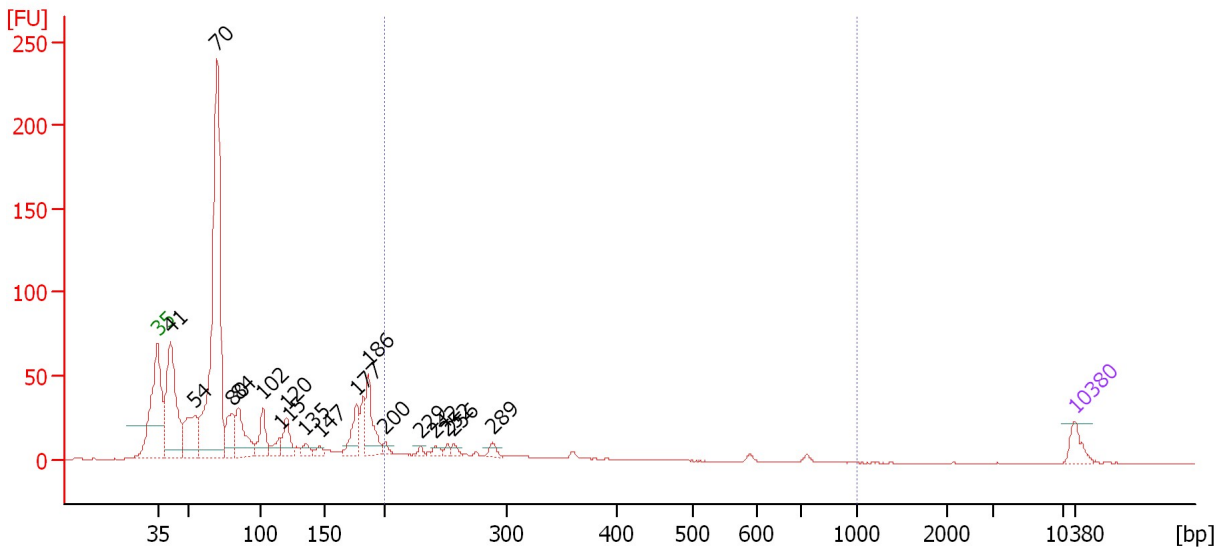
From [bp]	To [bp]	Average Size [bp]	Molarity [pmol/l]	Conc. [pg/μl]	Corr. Area	% of Total	Size distribution in CV [%]	Color
200	1,000	321	3,227.3	597.16	140.3	8	39.8	Blue

Assay Class: High Sensitivity DNA Assay  
 Data Path: C:\...ents and Settings\Bioanalyzer\2012-06-20\2012-06-20\_002.xad

Created: 6/20/2012 10:32:17 AM  
 Modified: 6/26/2012 9:49:19 AM

**Electropherogram Summary Continued ...**

#37 sRNA PCR 1:2 (6/19/12) 11 CYC



**Overall Results for sample 10 : #37 sRNA PCR 1:2 (6/19/12) 11 CYC**

Number of peaks found: 18                      Corr. Area 1: 128.7  
 Noise: 0.2

**Peak table for sample 10 : #37 sRNA PCR 1:2 (6/19/12) 11 CYC**

Peak	Size [bp]	Conc. [pg/μl]	Molarity [pmol/l]	Observations
1	35	125.00	5,411.3	Lower Marker
2	41	1,022.88	37,455.6	
3	54	415.48	11,591.6	
4	70	2,518.35	54,729.2	
5	80	253.11	4,794.2	
6	84	349.99	6,287.6	
7	102	219.55	3,275.9	
8	115	90.90	1,199.3	
9	120	174.27	2,194.3	
10	135	59.31	663.4	
11	147	43.95	453.3	
12	177	208.48	1,787.8	
13	186	313.08	2,543.9	
14	200	35.58	269.5	
15	229	20.93	138.2	
16	242	34.54	216.5	
17	252	27.42	165.1	
18	256	32.08	189.5	
19	289	42.62	223.7	
20	10,380	75.00	10.9	Upper Marker

**Region table for sample 10 : #37 sRNA PCR 1:2 (6/19/12) 11 CYC**

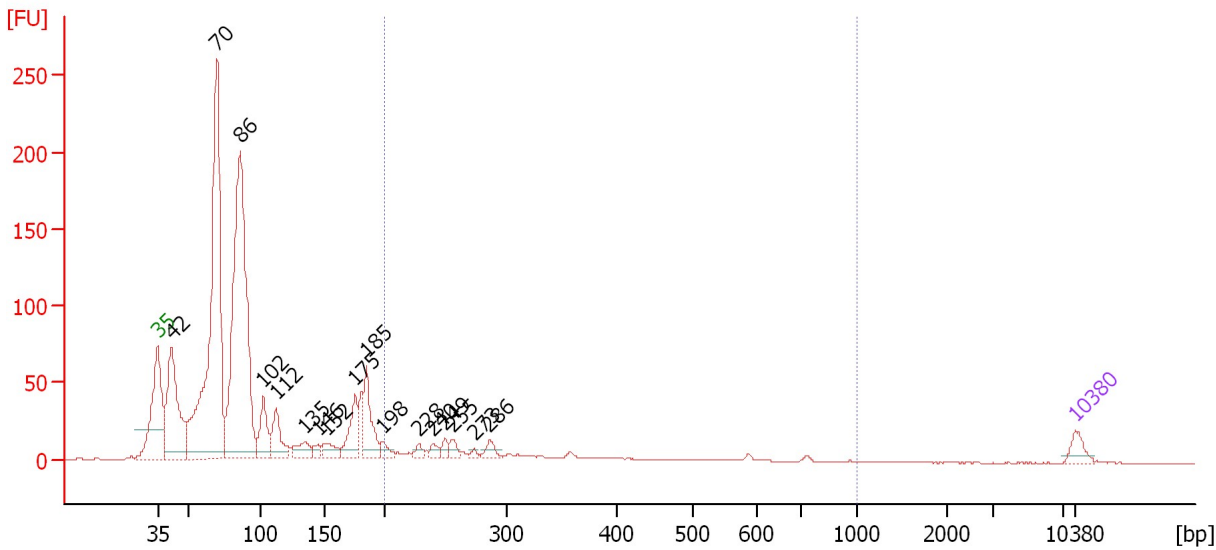
From [bp]	To [bp]	Average Size [bp]	Molarity [pmol/l]	Conc. [pg/μl]	Corr. Area	% of Total	Size distribution in CV [%]	Color
200	1,000	325	3,556.1	664.63	128.7	12	39.0	Blue

Assay Class: High Sensitivity DNA Assay  
 Data Path: C:\...ents and Settings\Bioanalyzer\2012-06-20\2012-06-20\_002.xad

Created: 6/20/2012 10:32:17 AM  
 Modified: 6/26/2012 9:49:19 AM

**Electropherogram Summary Continued ...**

#71 sRNA PCR 1:2 (6/19/12) 11 CYC



**Overall Results for sample 11 : #71 sRNA PCR 1:2 (6/19/12) 11 CYC**

Number of peaks found: 17                      Corr. Area 1: 180.6  
 Noise: 0.1

**Peak table for sample 11 : #71 sRNA PCR 1:2 (6/19/12) 11 CYC**

Peak	Size [bp]	Conc. [pg/µl]	Molarity [pmol/l]	Observations
1	35	125.00	5,411.3	Lower Marker
2	42	1,228.46	44,580.4	
3	70	3,596.70	78,391.6	
4	86	3,447.43	61,053.9	
5	102	348.14	5,179.3	
6	112	343.45	4,643.2	
7	135	165.68	1,861.5	
8	146	72.17	751.3	
9	152	136.86	1,367.6	
10	175	323.32	2,795.1	
11	185	418.87	3,427.0	
12	198	78.30	597.9	
13	228	45.72	304.2	
14	240	58.71	371.0	
15	249	55.51	337.2	
16	255	64.54	383.2	
17	273	22.90	126.9	
18	286	72.67	384.4	
19	10,380	75.00	10.9	Upper Marker

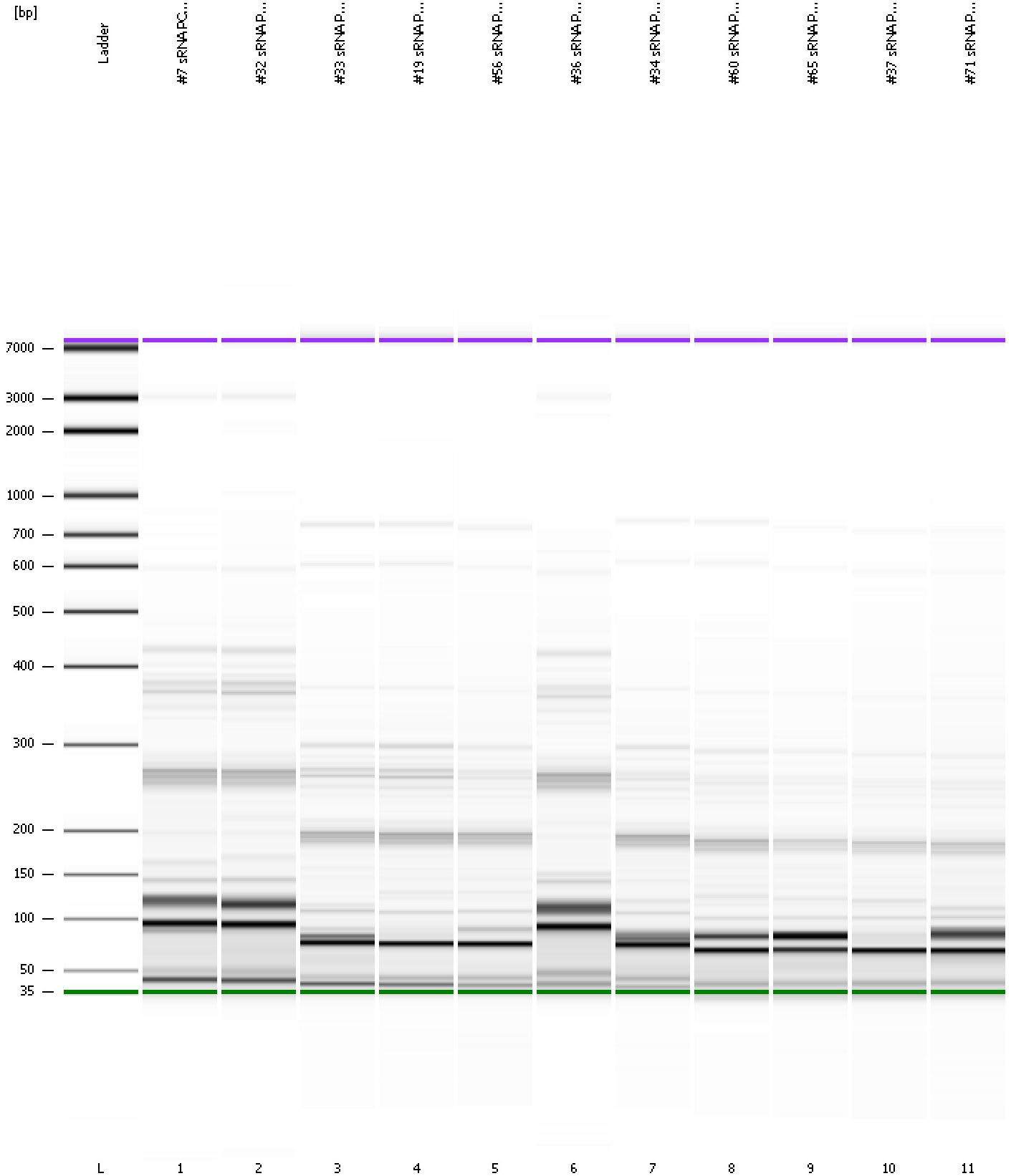
**Region table for sample 11 : #71 sRNA PCR 1:2 (6/19/12) 11 CYC**

From [bp]	To [bp]	Average Size [bp]	Molarity [pmol/l]	Conc. [pg/µl]	Corr. Area	% of Total	Size distribution in CV [%]	Color
200	1,000	339	5,139.5	977.65	180.6	10	42.2	Blue

Assay Class: High Sensitivity DNA Assay  
Data Path: C:\...ents and Settings\Bioanalyzer\2012-06-20\2012-06-20\_002.xad

Created: 6/20/2012 10:32:17 AM  
Modified: 6/26/2012 9:49:19 AM

**Gel Image**



Assay Class: High Sensitivity DNA Assay  
 Data Path: C:\...ents and Settings\Bioanalyzer\2012-06-20\2012-06-20\_002.xad

Created: 6/20/2012 10:32:17 AM  
 Modified: 6/26/2012 9:49:19 AM

**Run Logbook**

Description	Number	Source	Category	Sub Category	Time	Time Zone	User	Host
Run ended on port 1 (Number of wells acquired: 12)		Instrument	Run		6/20/2012 11:13:35 AM	(GMT --07:00) Pacific Standard Time	UC Davis	D8XSMGH1
Run started on port 1 (File: C:\Documents and Settings\Bioanalyzer\2012-06-20\2012-06-20_002.xad)		Instrument	Run		6/20/2012 10:32:22 AM	(GMT --07:00) Pacific Standard Time	UC Davis	D8XSMGH1
Product Number : G2938B		Instrument	Run		6/20/2012 10:32:22 AM	(GMT --07:00) Pacific Standard Time	UC Davis	D8XSMGH1
Name :		Instrument	Run		6/20/2012 10:32:22 AM	(GMT --07:00) Pacific Standard Time	UC Davis	D8XSMGH1
Vendor : Agilent Technologies		Instrument	Run		6/20/2012 10:32:22 AM	(GMT --07:00) Pacific Standard Time	UC Davis	D8XSMGH1
Serial# : DE13701086		Instrument	Run		6/20/2012 10:32:22 AM	(GMT --07:00) Pacific Standard Time	UC Davis	D8XSMGH1
Firmware : C.01.069		Instrument	Run		6/20/2012 10:32:22 AM	(GMT --07:00) Pacific Standard Time	UC Davis	D8XSMGH1
Cartridge : Electrode		Instrument	Run		6/20/2012 10:32:22 AM	(GMT --07:00) Pacific Standard Time	UC Davis	D8XSMGH1