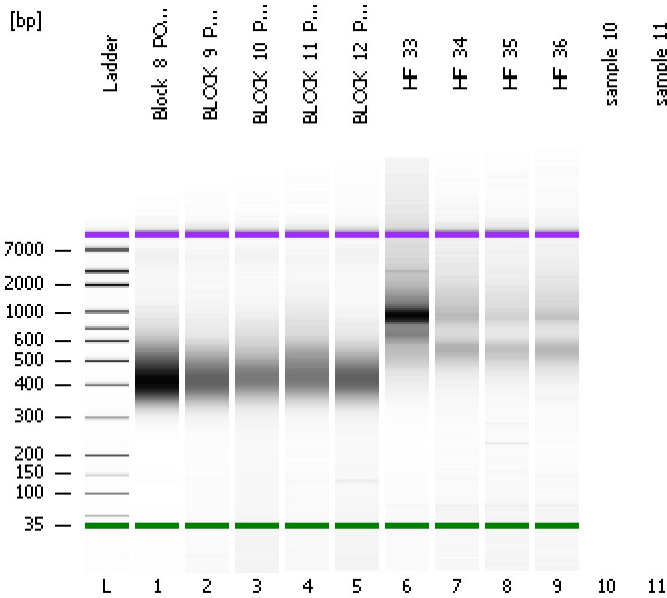


Assay Class: High Sensitivity DNA Assay
Data Path: C:\...ents and Settings\Bioanalyzer\2012-06-21\2012-06-21_002.xad

Created: 6/21/2012 11:42:09 AM
Modified: 6/21/2012 12:17:50 PM

Electrophoresis File Run Summary



Instrument Information:

Instrument Name: DE13701086 Firmware: C.01.069
Serial#: DE13701086 Type: G2938B

Assay Information:

Assay Origin Path: C:\Program Files\Agilent\2100 bioanalyzer\2100 expert\assays\dsDNA\High Sensitivity DNA.xsy
Assay Class: High Sensitivity DNA Assay
Version: 1.03
Assay Comments: Copyright © 2003-2010 Agilent Technologies

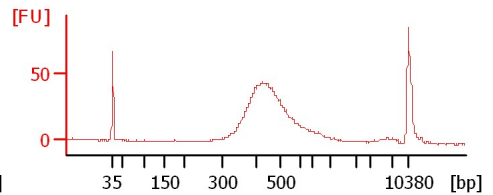
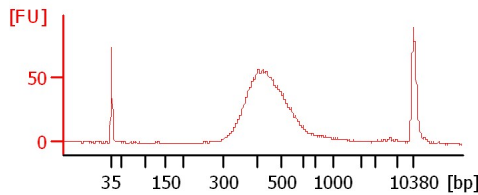
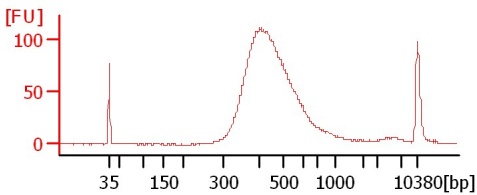
Chip Information:

Chip Lot #:
Reagent Kit Lot #:
Chip Comments:

Block_8_POOL_PURE

BLOCK_9_POOL_PURE

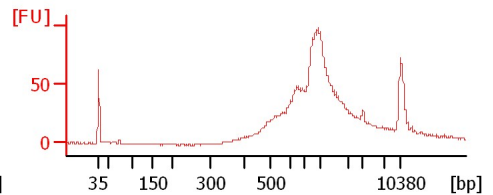
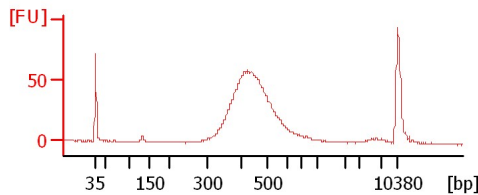
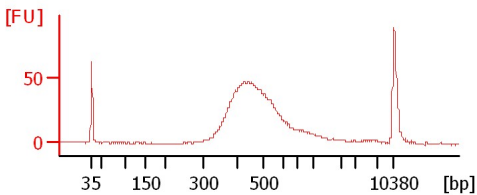
BLOCK_10_POOL_PURE



BLOCK_11_POOL_PURE

BLOCK_12_POOL_PURE

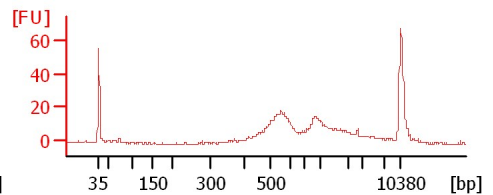
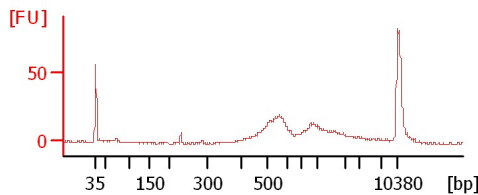
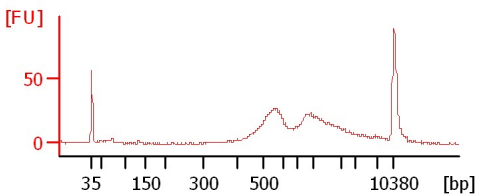
HF_33



HF_34

HF_35

HF_36



Assay Class: High Sensitivity DNA Assay
 Data Path: C:\...ents and Settings\Bioanalyzer\2012-06-21\2012-06-21_002.xad

Created: 6/21/2012 11:42:09 AM
 Modified: 6/21/2012 12:17:50 PM

Electrophoresis File Run Summary (Chip Summary)

Sample Name	Sample Comment	Rest. Digest	Status	Observation	Result Label	Result Color
Block_8_POOL_PURE		<input type="checkbox"/>	✓			
BLOCK_9_POOL_PURE		<input type="checkbox"/>	✓			
BLOCK_10_POOL_PURE		<input type="checkbox"/>	✓			
BLOCK_11_POOL_PURE		<input type="checkbox"/>	✓			
BLOCK_12_POOL_PURE		<input type="checkbox"/>	✓			
HF_33		<input type="checkbox"/>	✓			
HF_34		<input type="checkbox"/>	✓			
HF_35		<input type="checkbox"/>	✓			
HF_36		<input type="checkbox"/>	✓			
sample 10		<input type="checkbox"/>				
sample 11		<input type="checkbox"/>				
Ladder		<input type="checkbox"/>	✓			

Chip Lot #

Reagent Kit Lot #

Chip Comments :

Assay Class: High Sensitivity DNA Assay
Data Path: C:\...ents and Settings\Bioanalyzer\2012-06-21\2012-06-21_002.xad

Created: 6/21/2012 11:42:09 AM
Modified: 6/21/2012 12:17:50 PM

Electrophoresis Assay Details

General Analysis Settings

Number of Available Sample and Ladder Wells (Max.) : 12
Minimum Visible Range [s] : 32
Maximum Visible Range [s] : 138
Start Analysis Time Range [s] : 33
End Analysis Time Range [s] : 137.5
Ladder Concentration [pg/μl] : 1950
Uses Standard Area for Ladder Fragments
Lower Marker Concentration [pg/μl] : 125
Upper Marker Concentration [pg/μl] : 75
Used Upper Marker for Quantitation
Standard Curve Fit is Point to Point
Show Data Aligned to Lower and Upper Marker

Integrator Settings

Integration Start Time [s] : 33.05
Integration End Time [s] : 137
Slope Threshold : 0.8
Height Threshold [FU] : 5
Area Threshold : 0.1
Width Threshold [s] : 0.6
Baseline Plateau [s] : 0.5

Filter Settings

Filter Width [s] : 0.5
Polynomial Order : 4

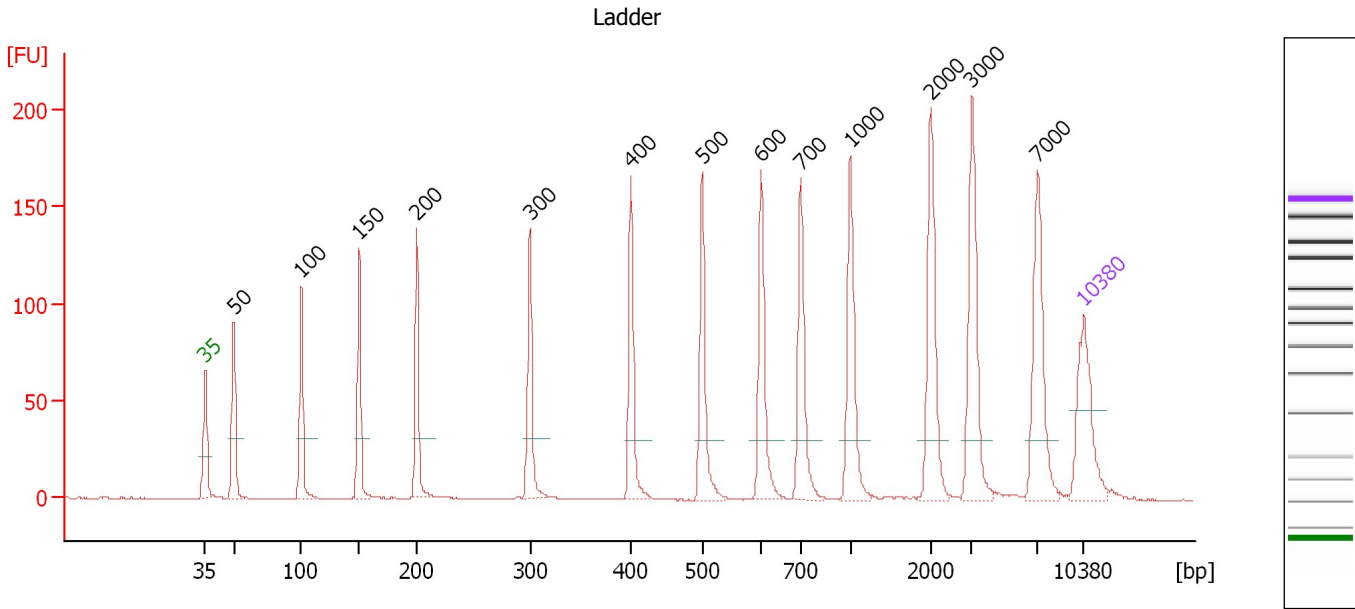
Ladder

Ladder Peak	Size	Area
1	35	160
2	50	210
3	100	208
4	150	221
5	200	242
6	300	270
7	400	305
8	500	306
9	600	336
10	700	321
11	1000	366
12	2000	413
13	3000	411
14	7000	400
15	10380	214

Assay Class: High Sensitivity DNA Assay
 Data Path: C:\...ents and Settings\Bioanalyzer\2012-06-21\2012-06-21_002.xad

Created: 6/21/2012 11:42:09 AM
 Modified: 6/21/2012 12:17:50 PM

Electropherogram Summary



Overall Results for Ladder

Noise: 0.1

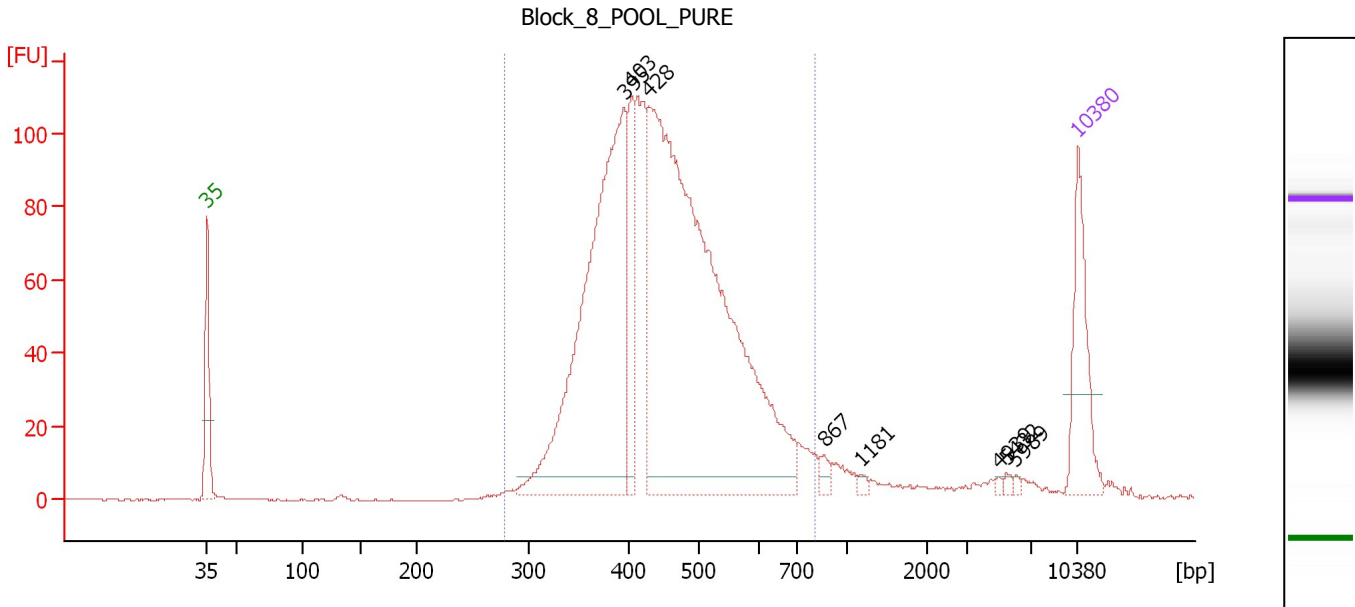
Peak table for Ladder

Peak	Size [bp]	Conc. [pg/μl]	Molarity [pmol/l]	Observations
1	35	125.00	5,411.3	Lower Marker
2	50	150.00	4,545.5	Ladder Peak
3	100	150.00	2,272.7	Ladder Peak
4	150	150.00	1,515.2	Ladder Peak
5	200	150.00	1,136.4	Ladder Peak
6	300	150.00	757.6	Ladder Peak
7	400	150.00	568.2	Ladder Peak
8	500	150.00	454.5	Ladder Peak
9	600	150.00	378.8	Ladder Peak
10	700	150.00	324.7	Ladder Peak
11	1,000	150.00	227.3	Ladder Peak
12	2,000	150.00	113.6	Ladder Peak
13	3,000	150.00	75.8	Ladder Peak
14	7,000	150.00	32.5	Ladder Peak
15	10,380	75.00	10.9	Upper Marker

Assay Class: High Sensitivity DNA Assay
 Data Path: C:\...ents and Settings\Bioanalyzer\2012-06-21\2012-06-21_002.xad

Created: 6/21/2012 11:42:09 AM
 Modified: 6/21/2012 12:17:50 PM

Electropherogram Summary Continued ...



Overall Results for sample 1 : Block 8 POOL PURE

Number of peaks found: 8 Corr. Area 1: 1,740.8
 Noise: 0.2

Peak table for sample 1 : Block 8 POOL PURE

Peak	Size [bp]	Conc. [pg/μl]	Molarity [pmol/l]	Observations
1	35	125.00	5,411.3	Lower Marker
2	395	559.23	2,146.0	
3	403	95.75	359.8	
4	428	937.36	3,322.0	
5	867	10.06	17.6	
6	1,181	3.97	5.1	
7	4,939	2.23	0.7	
8	5,432	3.13	0.9	
9	5,989	2.32	0.6	
10	10,380	75.00	10.9	Upper Marker

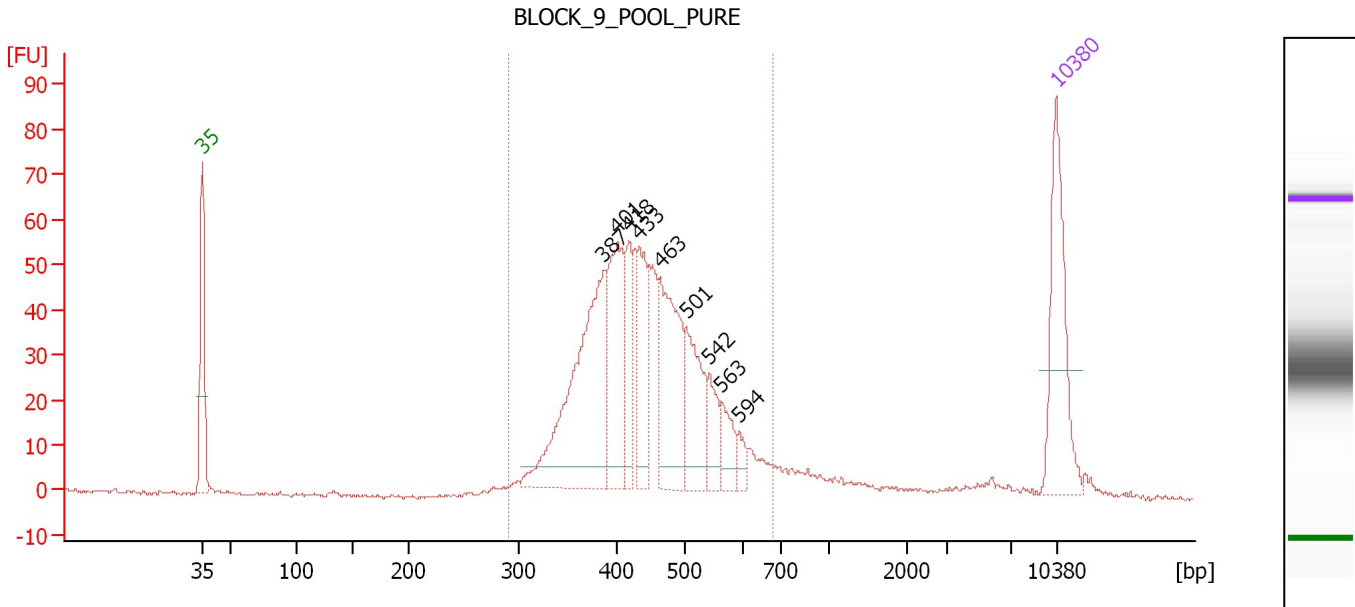
Region table for sample 1 : Block 8 POOL PURE

From [bp]	To [bp]	Average Size [bp]	Molarity [pmol/l]	Conc. [pg/μl]	Corr. Area	% of Total	Size distribution in CV [%]	Color
279	808	454	6,165.1	1,763.36	1,740.8	94	19.6	Blue

Assay Class: High Sensitivity DNA Assay
 Data Path: C:\...ents and Settings\Bioanalyzer\2012-06-21\2012-06-21_002.xad

Created: 6/21/2012 11:42:09 AM
 Modified: 6/21/2012 12:17:50 PM

Electropherogram Summary Continued ...



Overall Results for sample 2 : BLOCK 9 POOL PURE

Number of peaks found: 9 Corr. Area 1: 811.8
 Noise: 0.4

Peak table for sample 2 : BLOCK 9 POOL PURE

Peak	Size [bp]	Conc. [pg/μl]	Molarity [pmol/l]	Observations
1	35	125.00	5,411.3	Lower Marker
2	387	207.77	813.7	
3	401	105.42	398.0	
4	418	50.37	182.4	
5	433	63.08	220.7	
6	463	112.06	366.5	
7	501	71.80	216.9	
8	542	27.68	77.3	
9	563	24.46	65.9	
10	594	10.38	26.5	
11	10,380	75.00	10.9	Upper Marker

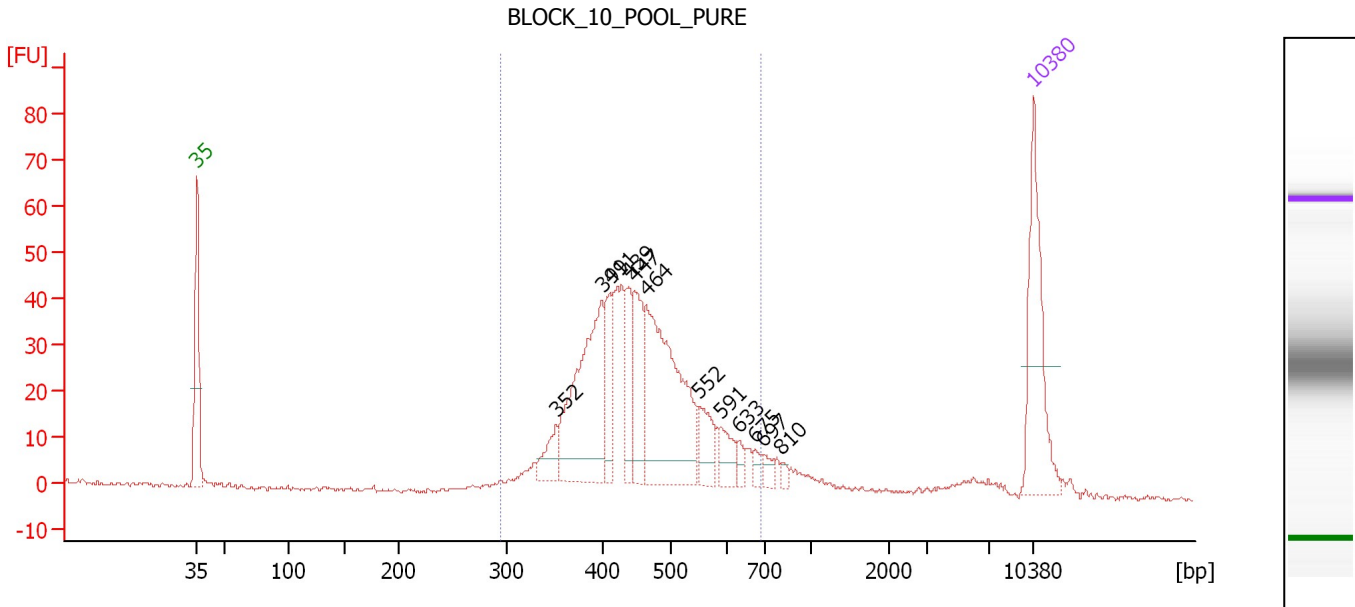
Region table for sample 2 : BLOCK 9 POOL PURE

From [bp]	To [bp]	Average Size [bp]	Molarity [pmol/l]	Conc. [pg/μl]	Corr. Area	% of Total	Size distribution in CV [%]	Color
291	677	444	2,870.9	813.17	811.8	92	16.7	Blue

Assay Class: High Sensitivity DNA Assay
 Data Path: C:\...ents and Settings\Bioanalyzer\2012-06-21\2012-06-21_002.xad

Created: 6/21/2012 11:42:09 AM
 Modified: 6/21/2012 12:17:50 PM

Electropherogram Summary Continued ...



Overall Results for sample 3 : BLOCK 10 POOL PURE

Number of peaks found: 12 Corr. Area 1: 633.6
 Noise: 0.4

Peak table for sample 3 : BLOCK 10 POOL PURE

Peak	Size [bp]	Conc. [pg/μl]	Molarity [pmol/l]	Observations
1	35	125.00	5,411.3	Lower Marker
2	352	24.46	105.4	
3	399	154.30	585.8	
4	411	41.52	152.9	
5	439	39.48	136.3	
6	447	56.60	191.9	
7	464	184.08	600.8	
8	552	28.31	77.7	
9	591	20.87	53.5	
10	633	8.66	20.7	
11	675	7.62	17.1	
12	697	8.09	17.6	
13	810	3.98	7.4	
14	10,380	75.00	10.9	Upper Marker

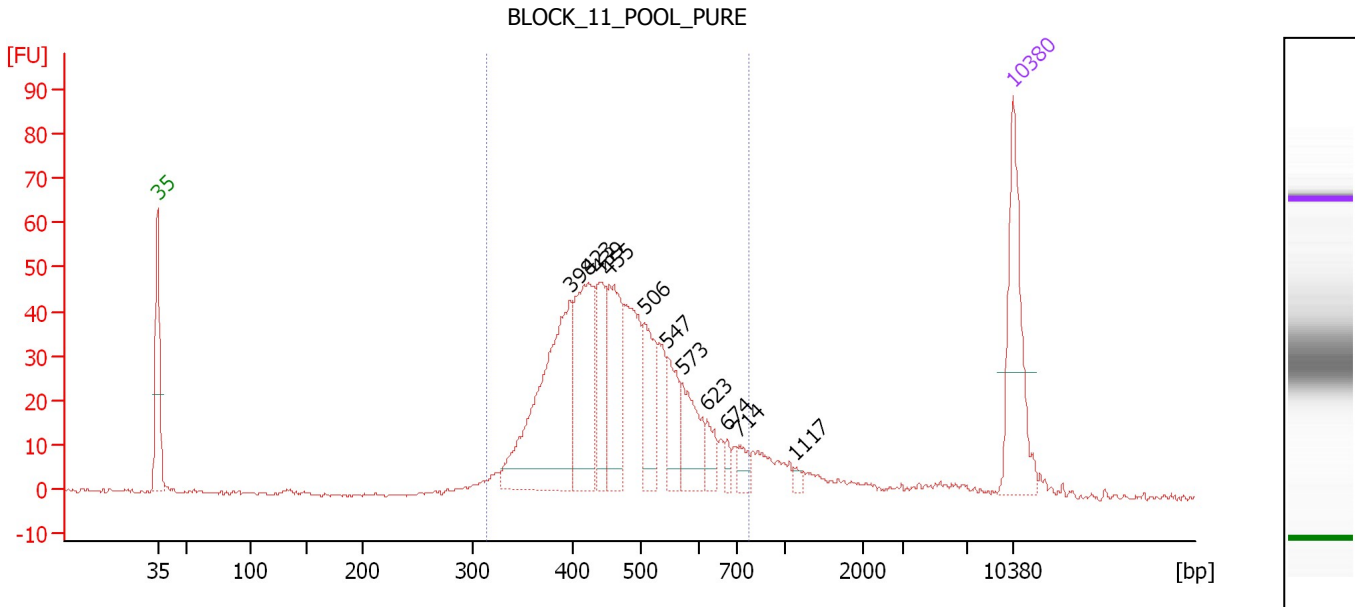
Region table for sample 3 : BLOCK 10 POOL PURE

From [bp]	To [bp]	Average Size [bp]	Molarity [pmol/l]	Conc. [pg/μl]	Corr. Area	% of Total	Size distribution in CV [%]	Color
295	691	457	2,486.6	722.24	633.6	88	17.4	Blue

Assay Class: High Sensitivity DNA Assay
 Data Path: C:\...ents and Settings\Bioanalyzer\2012-06-21\2012-06-21_002.xad

Created: 6/21/2012 11:42:09 AM
 Modified: 6/21/2012 12:17:50 PM

Electropherogram Summary Continued ...



Overall Results for sample 4 : BLOCK 11 POOL PURE

Number of peaks found: 11 Corr. Area 1: 746.4
 Noise: 0.4

Peak table for sample 4 : BLOCK 11 POOL PURE

Peak	Size [bp]	Conc. [pg/μl]	Molarity [pmol/l]	Observations
1	35	125.00	5,411.3	Lower Marker
2	398	196.24	746.7	
3	423	113.05	404.7	
4	439	57.48	198.2	
5	455	86.05	286.7	
6	506	56.81	170.2	
7	547	38.13	105.7	
8	573	48.47	128.2	
9	623	17.27	42.0	
10	674	7.59	17.1	
11	714	11.77	25.0	
12	1,117	4.12	5.6	
13	10,380	75.00	10.9	Upper Marker

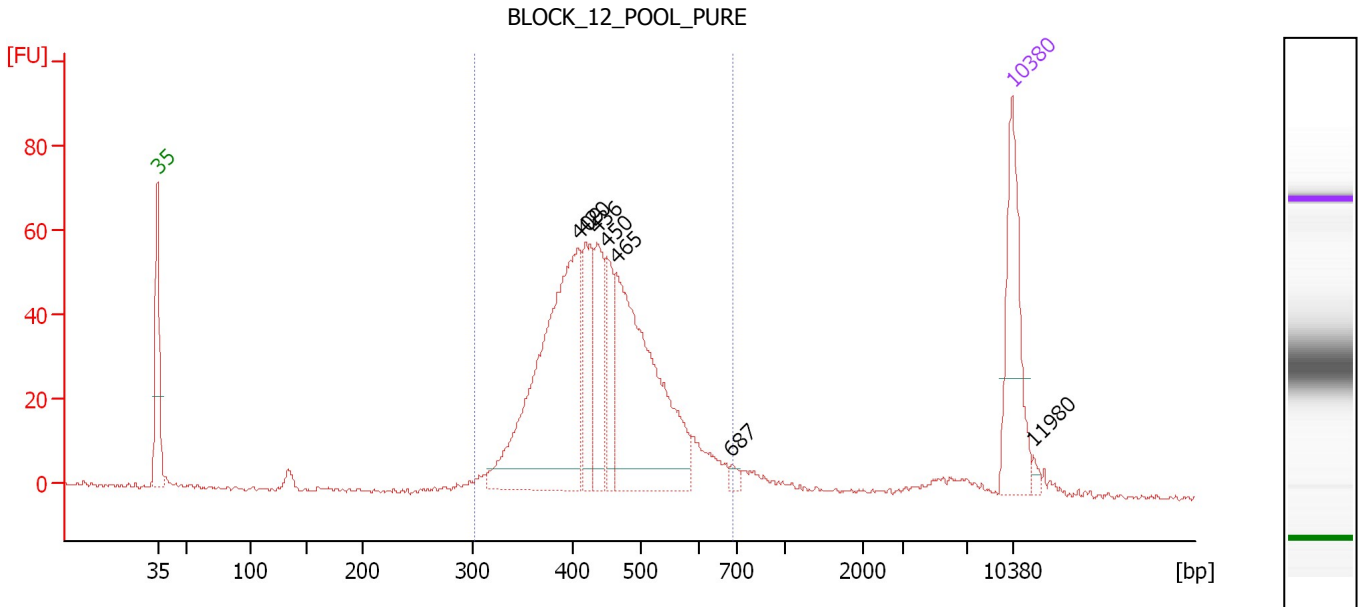
Region table for sample 4 : BLOCK 11 POOL PURE

From [bp]	To [bp]	Average Size [bp]	Molarity [pmol/l]	Conc. [pg/μl]	Corr. Area	% of Total	Size distribution in CV [%]	Color
314	781	473	2,700.8	806.63	746.4	90	18.8	Blue

Assay Class: High Sensitivity DNA Assay
 Data Path: C:\...ents and Settings\Bioanalyzer\2012-06-21\2012-06-21_002.xad

Created: 6/21/2012 11:42:09 AM
 Modified: 6/21/2012 12:17:50 PM

Electropherogram Summary Continued ...



Overall Results for sample 5 : BLOCK 12 POOL PURE

Number of peaks found: 7 Corr. Area 1: 798.3
 Noise: 0.7

Peak table for sample 5 : BLOCK 12 POOL PURE

Peak	Size [bp]	Conc. [pg/μl]	Molarity [pmol/l]	Observations
1	35	125.00	5,411.3	Lower Marker
2	409	295.72	1,096.5	
3	420	69.21	249.7	
4	436	70.89	246.2	
5	450	47.12	158.6	
6	465	243.81	794.7	
7	687	4.97	11.0	
8	10,380	75.00	10.9	Upper Marker
9	11,980	0.00	0.0	

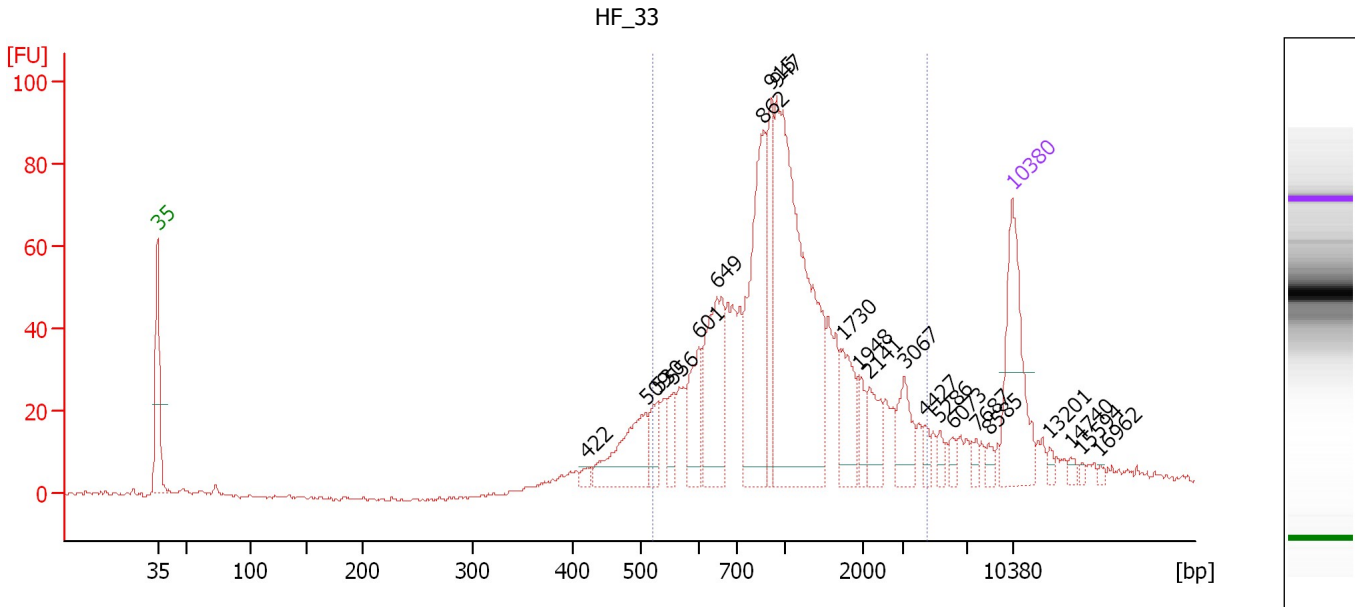
Region table for sample 5 : BLOCK 12 POOL PURE

From [bp]	To [bp]	Average Size [bp]	Molarity [pmol/l]	Conc. [pg/μl]	Corr. Area	% of Total	Size distribution in CV [%]	Color
302	690	448	2,734.4	782.48	798.3	92	16.3	Blue

Assay Class: High Sensitivity DNA Assay
 Data Path: C:\...ents and Settings\Bioanalyzer\2012-06-21\2012-06-21_002.xad

Created: 6/21/2012 11:42:09 AM
 Modified: 6/21/2012 12:17:50 PM

Electropherogram Summary Continued ...



Overall Results for sample 6 : HF_33

Number of peaks found: 22 Corr. Area 1: 989.5
 Noise: 0.4

Peak table for sample 6 : HF_33

Peak	Size [bp]	Conc. [pg/μl]	Molarity [pmol/l]	Observations
1	35	125.00	5,411.3	Lower Marker
2	422	6.03	21.7	
3	509	68.41	203.7	
4	530	21.53	61.6	
5	556	19.74	53.8	
6	601	45.49	114.6	
7	649	92.86	216.8	
8	862	137.45	241.6	
9	915	57.83	95.7	
10	947	283.89	454.1	
11	1,730	38.48	33.7	
12	1,948	12.71	9.9	
13	2,141	25.46	18.0	
14	3,067	27.47	13.6	
15	4,427	6.78	2.3	
16	5,286	7.14	2.0	
17	6,073	6.29	1.6	
18	7,687	5.80	1.1	
19	8,585	4.98	0.9	
20	10,380	75.00	10.9	Upper Marker
21	13,201	0.00	0.0	
22	14,740	0.00	0.0	
23	15,594	0.00	0.0	
24	16,962	0.00	0.0	

Assay Class: High Sensitivity DNA Assay
Data Path: C:\...ents and Settings\Bioanalyzer\2012-06-21\2012-06-21_002.xad

Created: 6/21/2012 11:42:09 AM
Modified: 6/21/2012 12:17:50 PM

Electropherogram Summary Continued ...

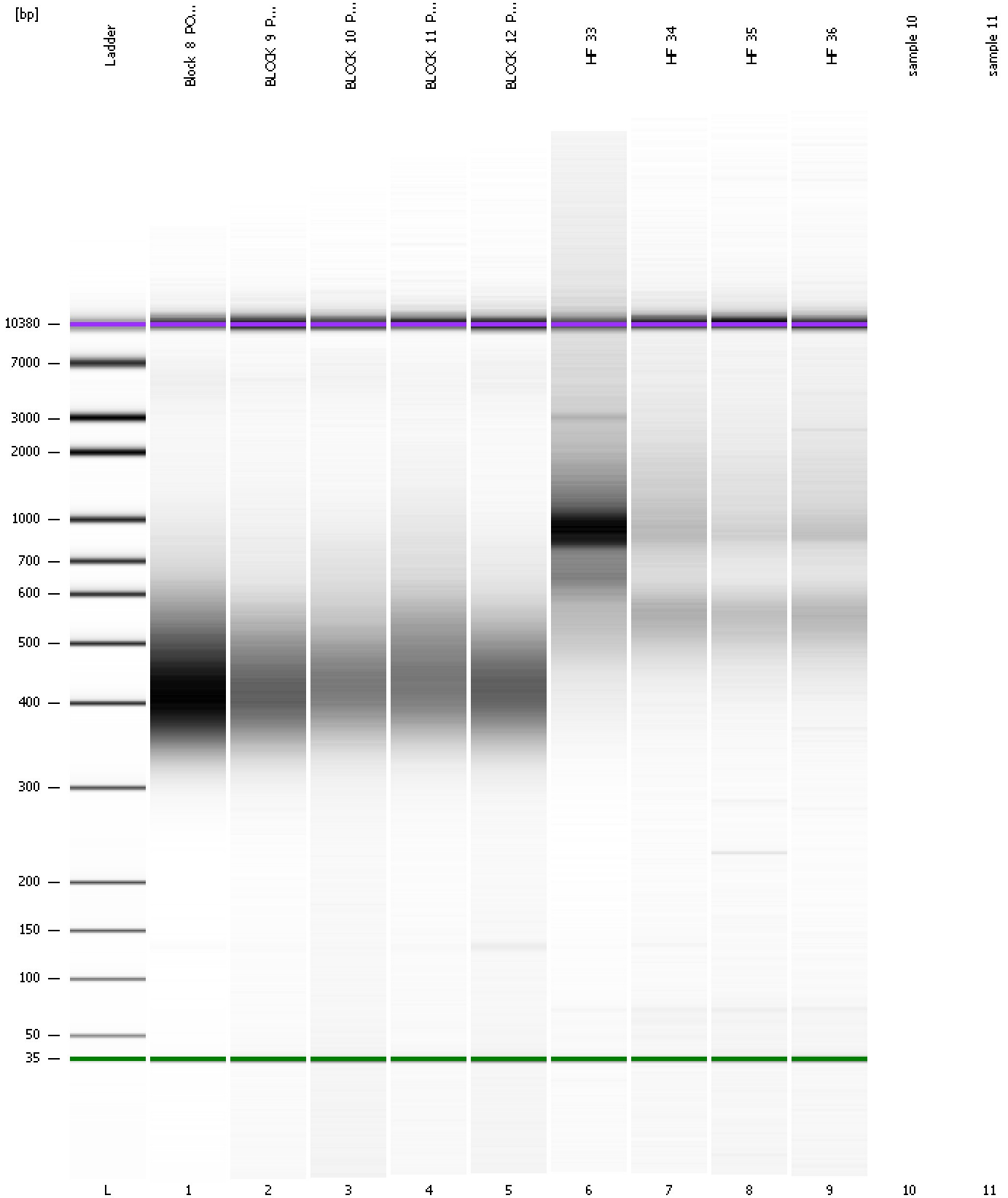
... Region table for sample 6 : HF_33

From [bp]	To [bp]	Average Size [bp]	Molarity [pmol/l]	Conc. [pg/μl]	Corr. Area	% of Total	Size distribution in CV [%]	Color
519	4,548	1,207	1,542.5	931.68	989.5	83	60.3	■

Assay Class: High Sensitivity DNA Assay
Data Path: C:\...ents and Settings\Bioanalyzer\2012-06-21\2012-06-21_002.xad

Created: 6/21/2012 11:42:09 AM
Modified: 6/21/2012 12:17:50 PM

Gel Image



Assay Class: High Sensitivity DNA Assay
 Data Path: C:\...ents and Settings\Bioanalyzer\2012-06-21\2012-06-21_002.xad

Created: 6/21/2012 11:42:09 AM
 Modified: 6/21/2012 12:17:50 PM

Run Logbook

Description	Number	Source	Category	Sub Category	Time	Time Zone	User	Host
Run ended on port 1 (Number of wells acquired: 10)		Instrument	Run		6/21/2012 12:17:46 PM	(GMT --07:00) Pacific Standard Time	UC Davis	D8XSMGH1
Run started on port 1 (File: C:\Documents and Settings\Bioanalyzer\2012-06-21\2012-06-21_002.xad)		Instrument	Run		6/21/2012 11:42:15 AM	(GMT --07:00) Pacific Standard Time	UC Davis	D8XSMGH1
Product Number : G2938B		Instrument	Run		6/21/2012 11:42:15 AM	(GMT --07:00) Pacific Standard Time	UC Davis	D8XSMGH1
Name :		Instrument	Run		6/21/2012 11:42:15 AM	(GMT --07:00) Pacific Standard Time	UC Davis	D8XSMGH1
Vendor : Agilent Technologies		Instrument	Run		6/21/2012 11:42:15 AM	(GMT --07:00) Pacific Standard Time	UC Davis	D8XSMGH1
Serial# : DE13701086		Instrument	Run		6/21/2012 11:42:15 AM	(GMT --07:00) Pacific Standard Time	UC Davis	D8XSMGH1
Firmware : C.01.069		Instrument	Run		6/21/2012 11:42:15 AM	(GMT --07:00) Pacific Standard Time	UC Davis	D8XSMGH1
Cartridge : Electrode		Instrument	Run		6/21/2012 11:42:15 AM	(GMT --07:00) Pacific Standard Time	UC Davis	D8XSMGH1