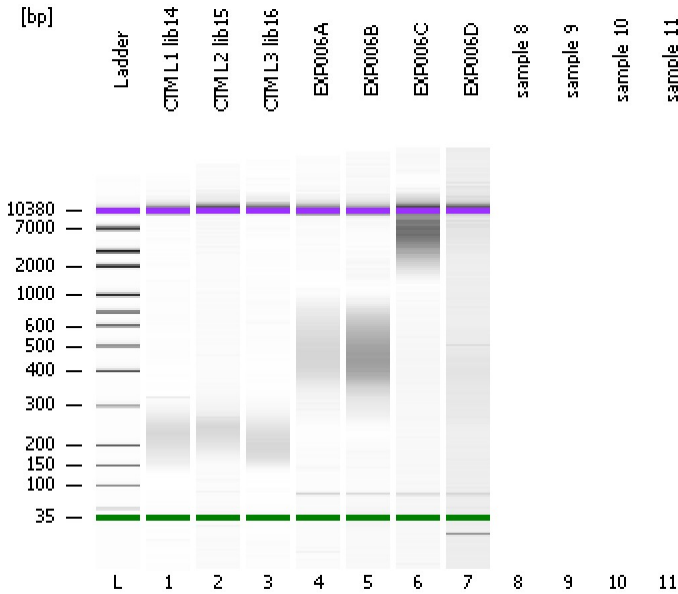


Assay Class: High Sensitivity DNA Assay
Data Path: C:\...ents and Settings\Bioanalyzer\2012-06-21\2012-06-21_003.xad

Created: 6/21/2012 1:19:05 PM
Modified: 6/21/2012 1:53:01 PM

Electrophoresis File Run Summary



Instrument Information:

Instrument Name: DE13701086 Firmware: C.01.069
Serial#: DE13701086 Type: G2938B

Assay Information:

Assay Origin Path: C:\Program Files\Agilent\2100 bioanalyzer\2100 expert\assays\dsDNA\High Sensitivity DNA.xsy
Assay Class: High Sensitivity DNA Assay
Version: 1.03
Assay Comments: Copyright © 2003-2010 Agilent Technologies

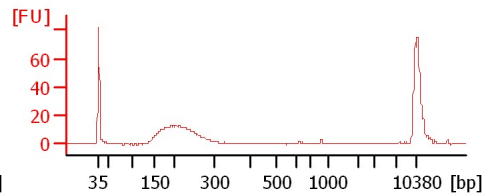
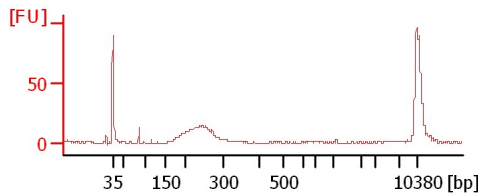
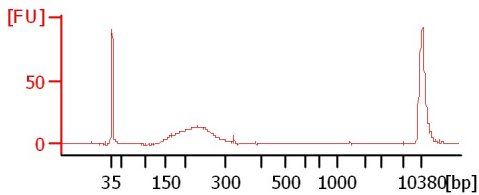
Chip Information:

Chip Lot #: Reagent Kit Lot #: Chip Comments:

CTM L1 lib14

CTM L2 lib15

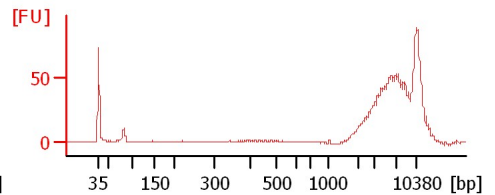
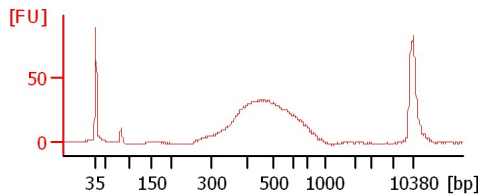
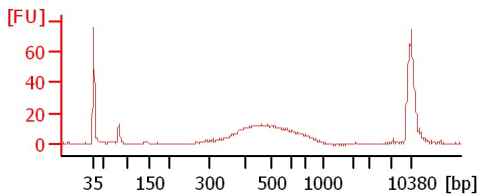
CTM L3 lib16



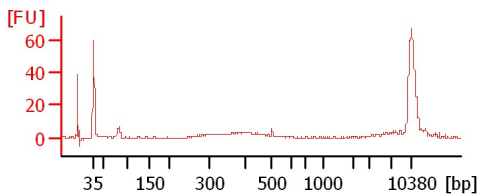
EXP006A

EXP006B

EXP006C



EXP006D



Assay Class: High Sensitivity DNA Assay
Data Path: C:\...ents and Settings\Bioanalyzer\2012-06-21\2012-06-21_003.xad

Created: 6/21/2012 1:19:05 PM
Modified: 6/21/2012 1:53:01 PM

Electrophoresis File Run Summary (Chip Summary)

Sample Name	Sample Comment	Rest. Digest	Status	Observation	Result Label	Result Color
CTM L1 lib14		<input type="checkbox"/>	✓			
CTM L2 lib15		<input type="checkbox"/>	✓			
CTM L3 lib16		<input type="checkbox"/>	✓			
EXP006A		<input type="checkbox"/>	✓			
EXP006B		<input type="checkbox"/>	✓			
EXP006C		<input type="checkbox"/>	✓			
EXP006D		<input type="checkbox"/>	✓			
sample 8		<input type="checkbox"/>				
sample 9		<input type="checkbox"/>				
sample 10		<input type="checkbox"/>				
sample 11		<input type="checkbox"/>				
Ladder		<input type="checkbox"/>	✓			

Chip Lot #

Reagent Kit Lot #

Chip Comments :

Assay Class: High Sensitivity DNA Assay
Data Path: C:\...ents and Settings\Bioanalyzer\2012-06-21\2012-06-21_003.xad

Created: 6/21/2012 1:19:05 PM
Modified: 6/21/2012 1:53:01 PM

Electrophoresis Assay Details

General Analysis Settings

Number of Available Sample and Ladder Wells (Max.) : 12
Minimum Visible Range [s] : 32
Maximum Visible Range [s] : 138
Start Analysis Time Range [s] : 33
End Analysis Time Range [s] : 137.5
Ladder Concentration [pg/μl] : 1950
Uses Standard Area for Ladder Fragments
Lower Marker Concentration [pg/μl] : 125
Upper Marker Concentration [pg/μl] : 75
Used Upper Marker for Quantitation
Standard Curve Fit is Point to Point
Show Data Aligned to Lower and Upper Marker

Integrator Settings

Integration Start Time [s] : 33.05
Integration End Time [s] : 137
Slope Threshold : 0.8
Height Threshold [FU] : 5
Area Threshold : 0.1
Width Threshold [s] : 0.6
Baseline Plateau [s] : 0.5

Filter Settings

Filter Width [s] : 0.5
Polynomial Order : 4

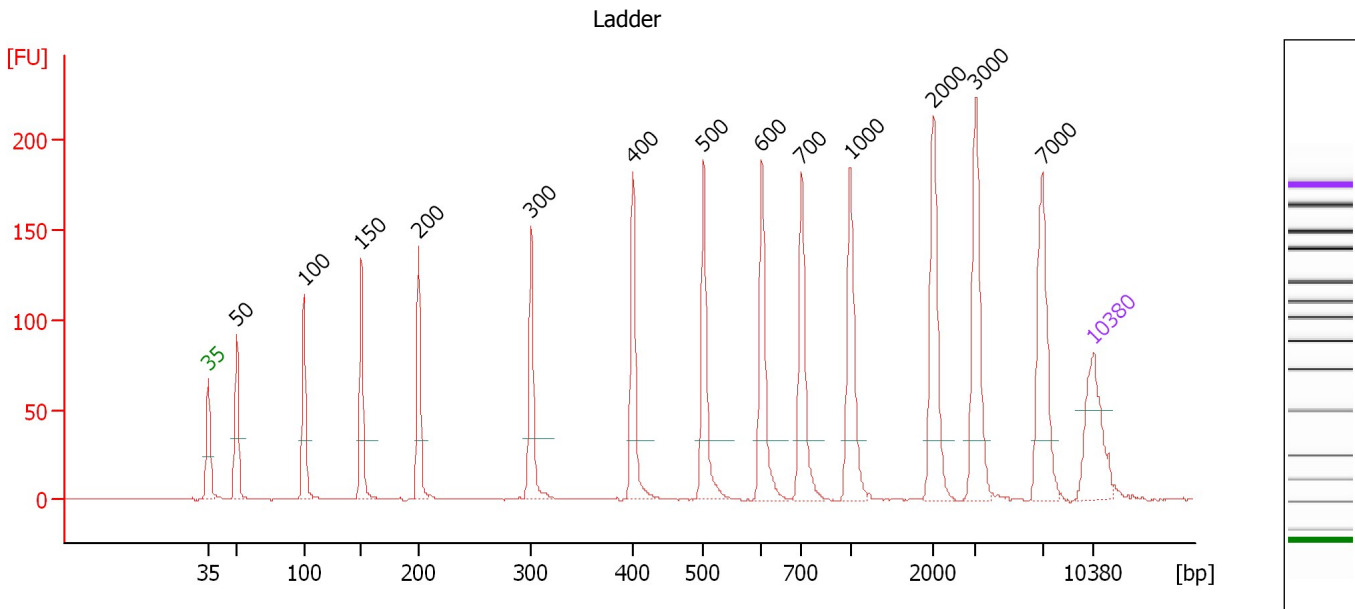
Ladder

Ladder Peak	Size	Area
1	35	160
2	50	210
3	100	208
4	150	221
5	200	242
6	300	270
7	400	305
8	500	306
9	600	336
10	700	321
11	1000	366
12	2000	413
13	3000	411
14	7000	400
15	10380	214

Assay Class: High Sensitivity DNA Assay
 Data Path: C:\...ents and Settings\Bioanalyzer\2012-06-21\2012-06-21_003.xad

Created: 6/21/2012 1:19:05 PM
 Modified: 6/21/2012 1:53:01 PM

Electropherogram Summary



Overall Results for Ladder

Noise: 0.2

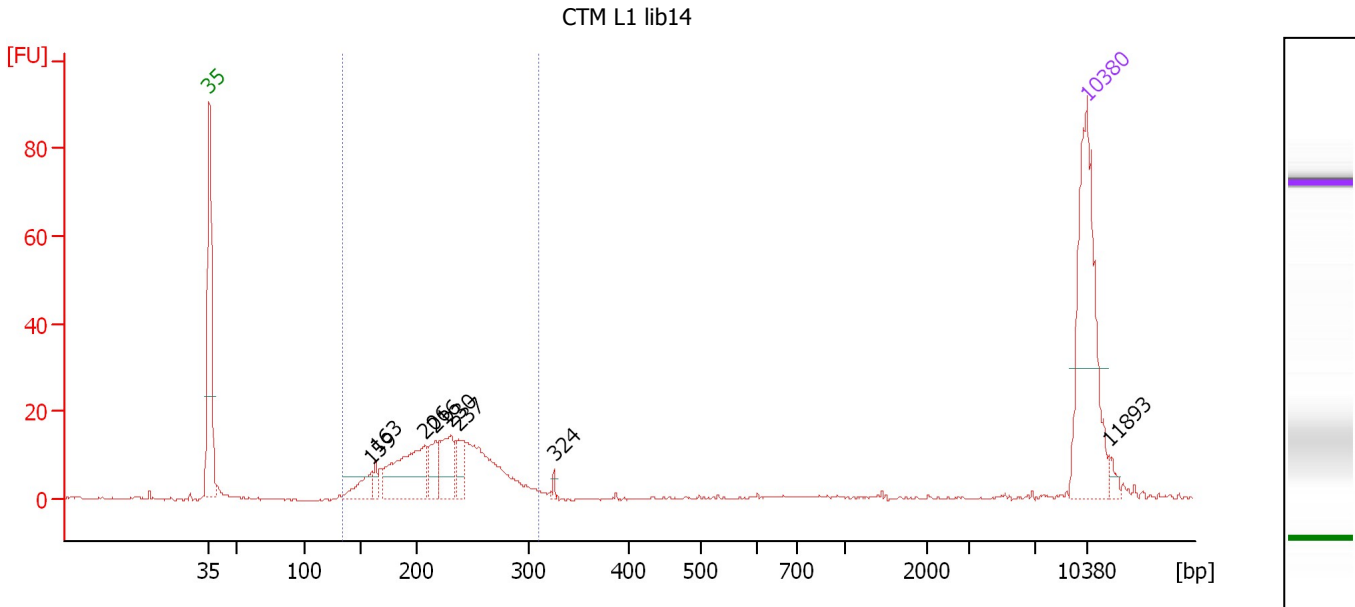
Peak table for Ladder

Peak	Size [bp]	Conc. [pg/μl]	Molarity [pmol/l]	Observations
1	35	125.00	5,411.3	Lower Marker
2	50	150.00	4,545.5	Ladder Peak
3	100	150.00	2,272.7	Ladder Peak
4	150	150.00	1,515.2	Ladder Peak
5	200	150.00	1,136.4	Ladder Peak
6	300	150.00	757.6	Ladder Peak
7	400	150.00	568.2	Ladder Peak
8	500	150.00	454.5	Ladder Peak
9	600	150.00	378.8	Ladder Peak
10	700	150.00	324.7	Ladder Peak
11	1,000	150.00	227.3	Ladder Peak
12	2,000	150.00	113.6	Ladder Peak
13	3,000	150.00	75.8	Ladder Peak
14	7,000	150.00	32.5	Ladder Peak
15	10,380	75.00	10.9	Upper Marker

Assay Class: High Sensitivity DNA Assay
 Data Path: C:\...ents and Settings\Bioanalyzer\2012-06-21\2012-06-21_003.xad

Created: 6/21/2012 1:19:05 PM
 Modified: 6/21/2012 1:53:01 PM

Electropherogram Summary Continued ...



Overall Results for sample 1 : CTM L1 lib14

Number of peaks found: 8 Corr. Area 1: 217.7
 Noise: 0.2

Peak table for sample 1 : CTM L1 lib14

Peak	Size [bp]	Conc. [pg/μl]	Molarity [pmol/l]	Observations
1	35	125.00	5,411.3	Lower Marker
2	159	17.09	163.0	
3	163	8.00	74.3	
4	206	62.64	461.6	
5	216	18.23	127.8	
6	230	29.85	196.7	
7	237	14.32	91.5	
8	324	2.14	10.0	
9	10,380	75.00	10.9	Upper Marker
10	11,893	0.00	0.0	

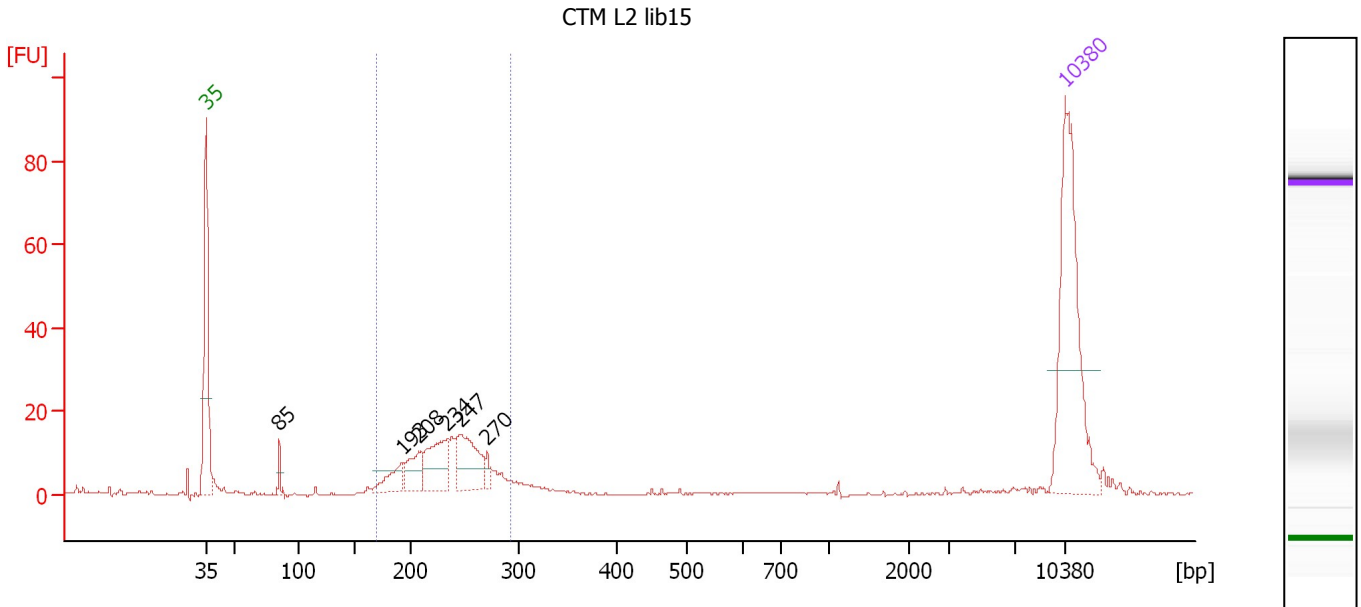
Region table for sample 1 : CTM L1 lib14

From [bp]	To [bp]	Average Size [bp]	Molarity [pmol/l]	Conc. [pg/μl]	Corr. Area	% of Total	Size distribution in CV [%]	Color
134	310	222	1,549.7	218.57	217.7	90	17.2	Blue

Assay Class: High Sensitivity DNA Assay
 Data Path: C:\...ents and Settings\Bioanalyzer\2012-06-21\2012-06-21_003.xad

Created: 6/21/2012 1:19:05 PM
 Modified: 6/21/2012 1:53:01 PM

Electropherogram Summary Continued ...



Overall Results for sample 2 : CTM L2 lib15

Number of peaks found: 6 Corr. Area 1: 159.4
 Noise: 0.2

Peak table for sample 2 : CTM L2 lib15

Peak	Size [bp]	Conc. [pg/μl]	Molarity [pmol/l]	Observations
1	35	125.00	5,411.3	Lower Marker
2	85	6.46	115.1	
3	193	16.56	129.8	
4	208	18.99	138.1	
5	234	35.83	231.9	
6	247	37.28	228.9	
7	270	5.16	29.0	
8	10,380	75.00	10.9	Upper Marker

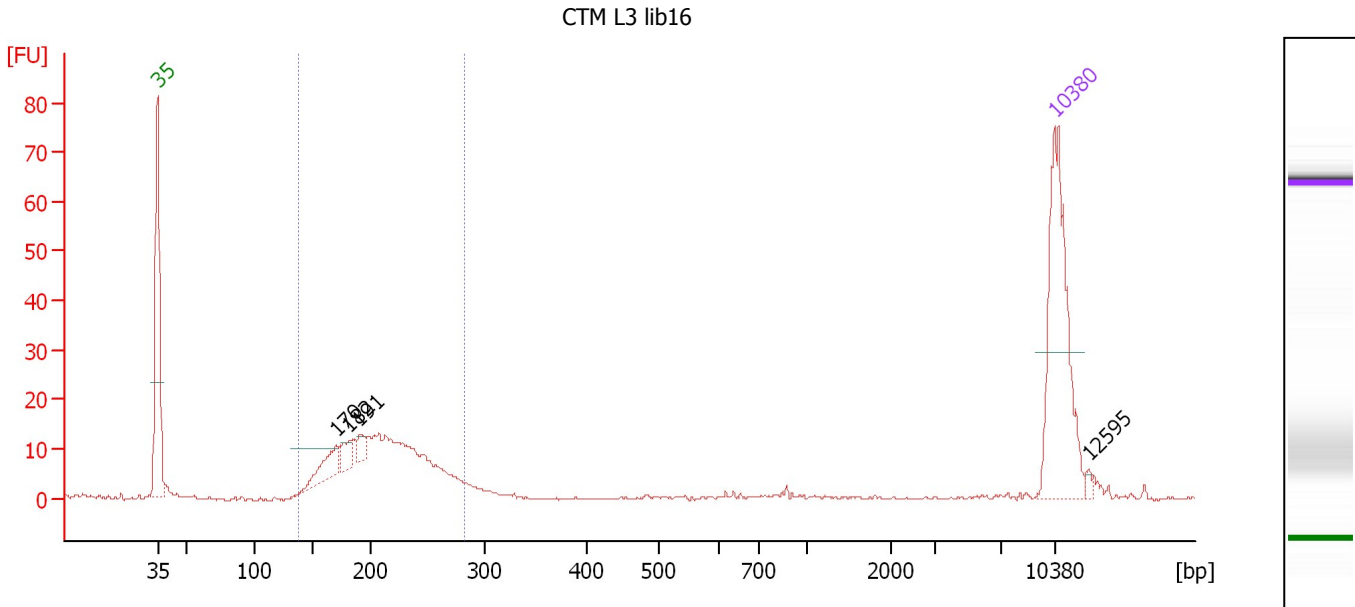
Region table for sample 2 : CTM L2 lib15

From [bp]	To [bp]	Average Size [bp]	Molarity [pmol/l]	Conc. [pg/μl]	Corr. Area	% of Total	Size distribution in CV [%]	Color
169	292	233	933.1	141.74	159.4	80	12.2	Blue

Assay Class: High Sensitivity DNA Assay
 Data Path: C:\...ents and Settings\Bioanalyzer\2012-06-21\2012-06-21_003.xad

Created: 6/21/2012 1:19:05 PM
 Modified: 6/21/2012 1:53:01 PM

Electropherogram Summary Continued ...



Overall Results for sample 3 : CTM L3 lib16

Number of peaks found: 4 Corr. Area 1: 195.7
 Noise: 0.2

Peak table for sample 3 : CTM L3 lib16

Peak	Size [bp]	Conc. [pg/μl]	Molarity [pmol/l]	Observations
1	35	125.00	5,411.3	Lower Marker
2	170	20.37	181.3	
3	182	10.58	88.1	
4	191	7.67	60.9	
5	10,380	75.00	10.9	Upper Marker
6	12,595	0.00	0.0	

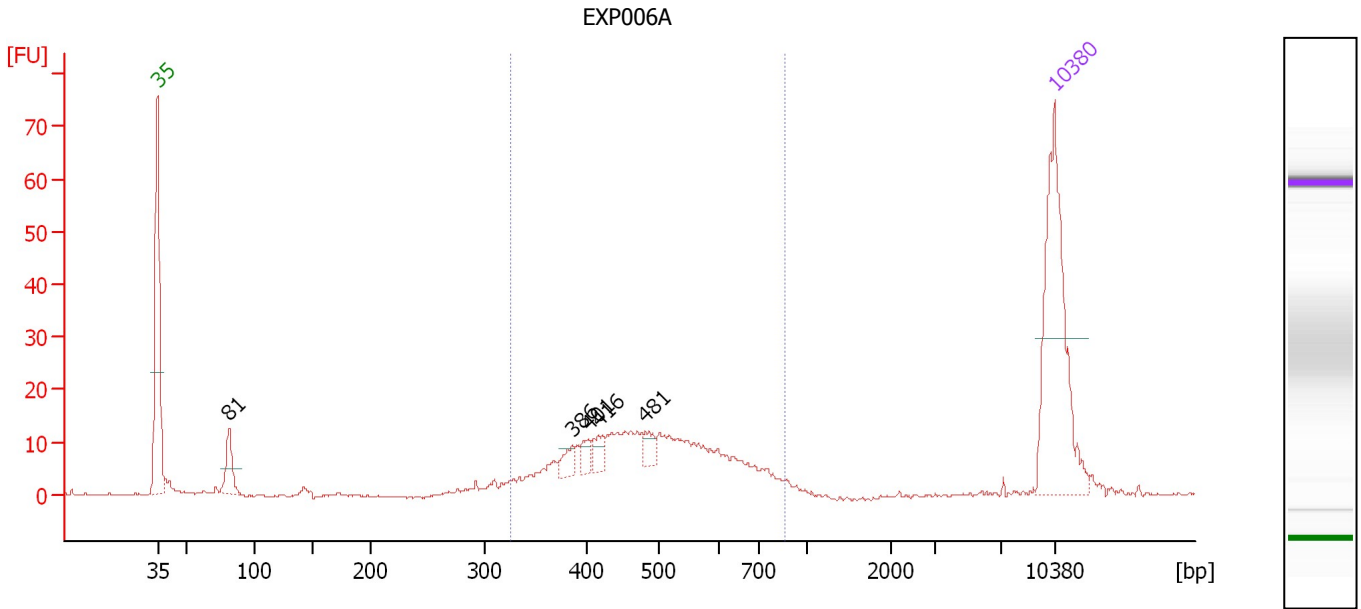
Region table for sample 3 : CTM L3 lib16

From [bp]	To [bp]	Average Size [bp]	Molarity [pmol/l]	Conc. [pg/μl]	Corr. Area	% of Total	Size distribution in CV [%]	Color
138	282	209	1,682.5	224.61	195.7	83	16.2	Blue

Assay Class: High Sensitivity DNA Assay
 Data Path: C:\...ents and Settings\Bioanalyzer\2012-06-21\2012-06-21_003.xad

Created: 6/21/2012 1:19:05 PM
 Modified: 6/21/2012 1:53:01 PM

Electropherogram Summary Continued ...



Overall Results for sample 4 : EXP006A

Number of peaks found: 5 Corr. Area 1: 219.4
 Noise: 0.2

Peak table for sample 4 : EXP006A

Peak	Size [bp]	Conc. [pg/μl]	Molarity [pmol/l]	Observations
1	35	125.00	5,411.3	Lower Marker
2	81	21.27	395.5	
3	386	8.04	31.6	
4	401	6.52	24.6	
5	416	8.39	30.6	
6	481	7.69	24.2	
7	10,380	75.00	10.9	Upper Marker

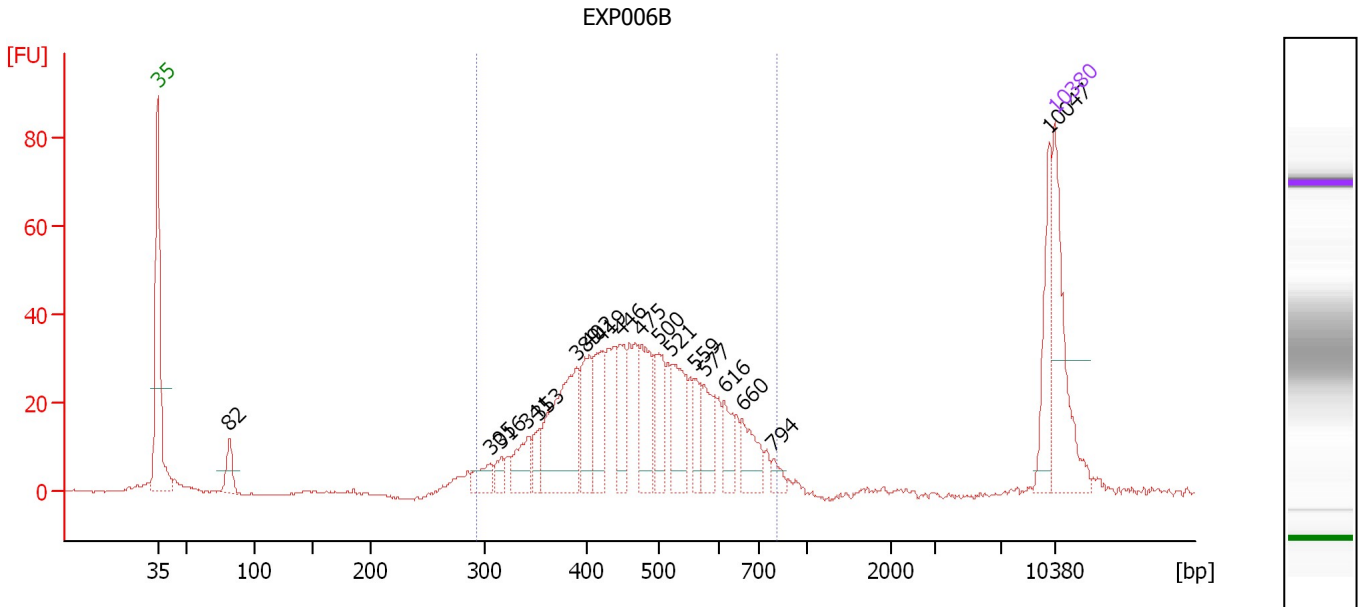
Region table for sample 4 : EXP006A

From [bp]	To [bp]	Average Size [bp]	Molarity [pmol/l]	Conc. [pg/μl]	Corr. Area	% of Total	Size distribution in CV [%]	Color
326	864	498	637.9	197.69	219.4	83	21.6	Blue

Assay Class: High Sensitivity DNA Assay
 Data Path: C:\...ents and Settings\Bioanalyzer\2012-06-21\2012-06-21_003.xad

Created: 6/21/2012 1:19:05 PM
 Modified: 6/21/2012 1:53:01 PM

Electropherogram Summary Continued ...



Overall Results for sample 5 : EXP006B

Number of peaks found: 18 Corr. Area 1: 637.8
 Noise: 0.3

Peak table for sample 5 : EXP006B

Peak	Size [bp]	Conc. [pg/μl]	Molarity [pmol/l]	Observations
1	35	125.00	5,411.3	Lower Marker
2	82	27.07	502.6	
3	305	20.04	99.5	
4	316	11.85	56.8	
5	341	32.51	144.3	
6	353	14.96	64.2	
7	389	118.55	461.3	
8	402	50.02	188.4	
9	419	49.76	179.9	
10	446	38.88	132.0	
11	475	55.57	177.3	
12	500	43.29	131.2	
13	521	53.21	154.7	
14	559	21.04	57.0	
15	577	32.93	86.5	
16	616	23.87	58.7	
17	660	32.31	74.1	
18	794	8.86	16.9	
19	10,047	43.48	6.6	
20	10,380	75.00	10.9	Upper Marker

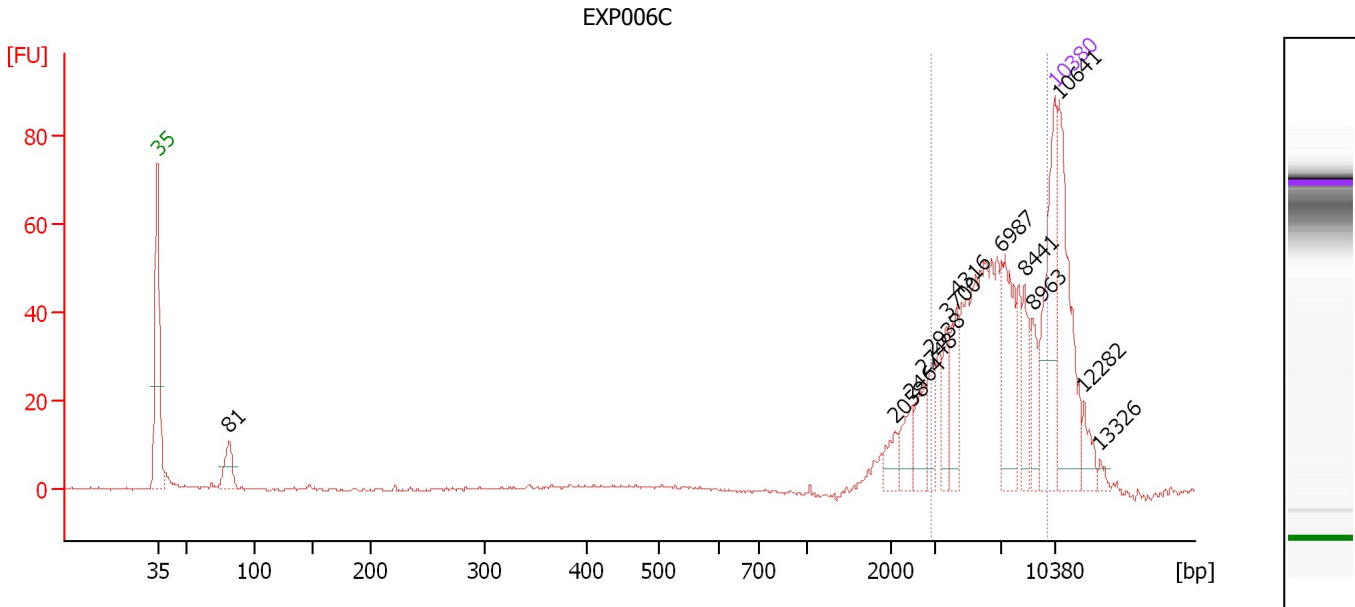
Region table for sample 5 : EXP006B

From [bp]	To [bp]	Average Size [bp]	Molarity [pmol/l]	Conc. [pg/μl]	Corr. Area	% of Total	Size distribution in CV [%]	Color
292	813	479	2,661.0	791.62	637.8	87	21.4	Blue

Assay Class: High Sensitivity DNA Assay
 Data Path: C:\...ents and Settings\Bioanalyzer\2012-06-21\2012-06-21_003.xad

Created: 6/21/2012 1:19:05 PM
 Modified: 6/21/2012 1:53:01 PM

Electropherogram Summary Continued ...



Overall Results for sample 6 : EXP006C

Number of peaks found: 13 Corr. Area 1: 340.9
 Noise: 0.3

Peak table for sample 6 : EXP006C

Peak	Size [bp]	Conc. [pg/μl]	Molarity [pmol/l]	Observations
1	35	125.00	5,411.3	Lower Marker
2	81	30.85	575.6	
3	2,058	13.08	9.6	
4	2,464	17.03	10.5	
5	2,748	20.84	11.5	
6	2,938	15.93	8.2	
7	3,700	18.57	7.6	
8	4,316	28.46	10.0	
9	6,987	50.33	10.9	
10	8,441	22.66	4.1	
11	8,963	17.81	3.0	
12	10,380	75.00	10.9	Upper Marker
13	10,641	0.00	0.0	
14	12,282	0.00	0.0	
15	13,326	0.00	0.0	

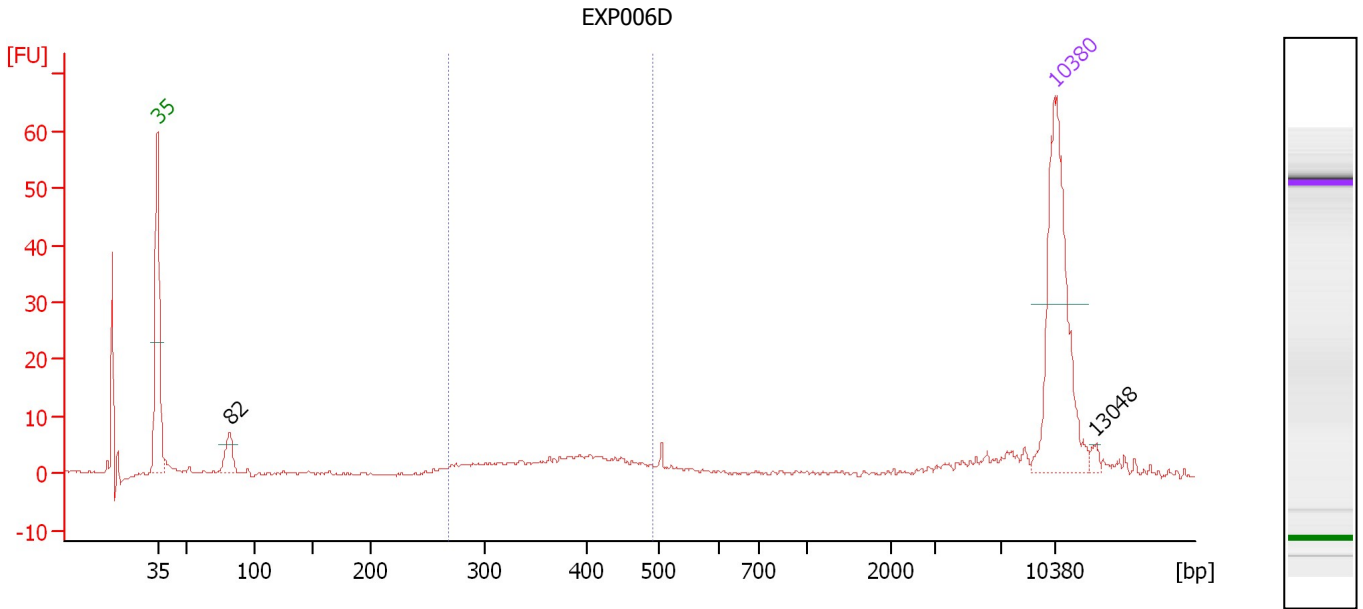
Region table for sample 6 : EXP006C

From [bp]	To [bp]	Average Size [bp]	Molarity [pmol/l]	Conc. [pg/μl]	Corr. Area	% of Total	Size distribution in CV [%]	Color
2,902	9,893	6,348	83.3	317.51	340.9	64	30.4	Blue

Assay Class: High Sensitivity DNA Assay
 Data Path: C:\...ents and Settings\Bioanalyzer\2012-06-21\2012-06-21_003.xad

Created: 6/21/2012 1:19:05 PM
 Modified: 6/21/2012 1:53:01 PM

Electropherogram Summary Continued ...



Overall Results for sample 7 : EXP006D

Number of peaks found: 2 Corr. Area 1: 46.4
 Noise: 0.3

Peak table for sample 7 : EXP006D

Peak	Size [bp]	Conc. [pg/μl]	Molarity [pmol/l]	Observations
1	35	125.00	5,411.3	Lower Marker
2	82	14.98	276.6	
3	10,380	75.00	10.9	Upper Marker
4	13,048	0.00	0.0	

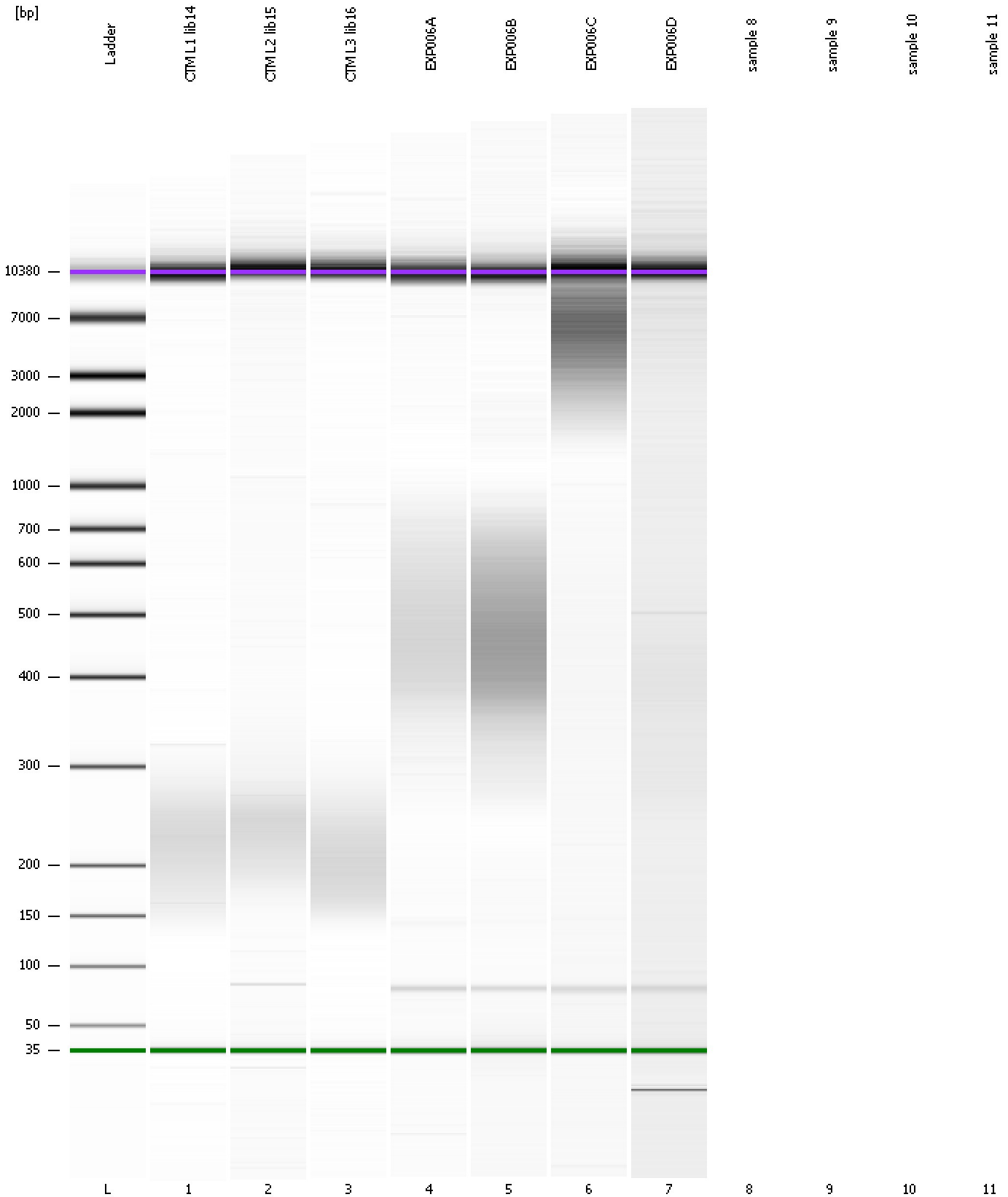
Region table for sample 7 : EXP006D

From [bp]	To [bp]	Average Size [bp]	Molarity [pmol/l]	Conc. [pg/μl]	Corr. Area	% of Total	Size distribution in CV [%]	Color
269	492	376	204.6	49.09	46.4	37	15.5	Blue

Assay Class: High Sensitivity DNA Assay
Data Path: C:\...ents and Settings\Bioanalyzer\2012-06-21\2012-06-21_003.xad

Created: 6/21/2012 1:19:05 PM
Modified: 6/21/2012 1:53:01 PM

Gel Image



Assay Class: High Sensitivity DNA Assay
Data Path: C:\...ents and Settings\Bioanalyzer\2012-06-21\2012-06-21_003.xad

Created: 6/21/2012 1:19:05 PM
Modified: 6/21/2012 1:53:01 PM

Invalid Samples

Sample 8 has not been run, no results available.

Sample 9 has not been run, no results available.

Sample 10 has not been run, no results available.

Sample 11 has not been run, no results available.

Assay Class: High Sensitivity DNA Assay
 Data Path: C:\...ents and Settings\Bioanalyzer\2012-06-21\2012-06-21_003.xad

Created: 6/21/2012 1:19:05 PM
 Modified: 6/21/2012 1:53:01 PM

Run Logbook

Description	Number	Source	Category	Sub Category	Time	Time Zone	User	Host
Run ended on port 1 (Number of wells acquired: 8)		Instrument	Run		6/21/2012 1:48:58 PM	(GMT --07:00) Pacific Standard Time	UC Davis	D8XSMGH1
Run started on port 1 (File: C:\Documents and Settings\Bioanalyzer\2012-06-21\2012-06-21_003.xad)		Instrument	Run		6/21/2012 1:19:10 PM	(GMT --07:00) Pacific Standard Time	UC Davis	D8XSMGH1
Product Number : G2938B		Instrument	Run		6/21/2012 1:19:10 PM	(GMT --07:00) Pacific Standard Time	UC Davis	D8XSMGH1
Name :		Instrument	Run		6/21/2012 1:19:10 PM	(GMT --07:00) Pacific Standard Time	UC Davis	D8XSMGH1
Vendor : Agilent Technologies		Instrument	Run		6/21/2012 1:19:10 PM	(GMT --07:00) Pacific Standard Time	UC Davis	D8XSMGH1
Serial# : DE13701086		Instrument	Run		6/21/2012 1:19:10 PM	(GMT --07:00) Pacific Standard Time	UC Davis	D8XSMGH1
Firmware : C.01.069		Instrument	Run		6/21/2012 1:19:10 PM	(GMT --07:00) Pacific Standard Time	UC Davis	D8XSMGH1
Cartridge : Electrode		Instrument	Run		6/21/2012 1:19:10 PM	(GMT --07:00) Pacific Standard Time	UC Davis	D8XSMGH1