

Assay Class: High Sensitivity DNA Assay  
Data Path: C:\...ents and Settings\Bioanalyzer\2012-06-25\2012-06-25\_001.xad

Created: 6/25/2012 10:03:52 AM  
Modified: 6/25/2012 2:00:53 PM

**Electrophoresis Assay Details**

**General Analysis Settings**

Number of Available Sample and Ladder Wells (Max.) : 12  
Minimum Visible Range [s] : 32  
Maximum Visible Range [s] : 138  
Start Analysis Time Range [s] : 33  
End Analysis Time Range [s] : 137.5  
Ladder Concentration [pg/μl] : 1950  
Uses Standard Area for Ladder Fragments  
Lower Marker Concentration [pg/μl] : 125  
Upper Marker Concentration [pg/μl] : 75  
Used Upper Marker for Quantitation  
Standard Curve Fit is Point to Point  
Show Data Aligned to Lower and Upper Marker

**Integrator Settings**

Integration Start Time [s] : 33.05  
Integration End Time [s] : 137  
Slope Threshold : 0.8  
Height Threshold [FU] : 5  
Area Threshold : 0.1  
Width Threshold [s] : 0.6  
Baseline Plateau [s] : 0.5

**Filter Settings**

Filter Width [s] : 0.5  
Polynomial Order : 4

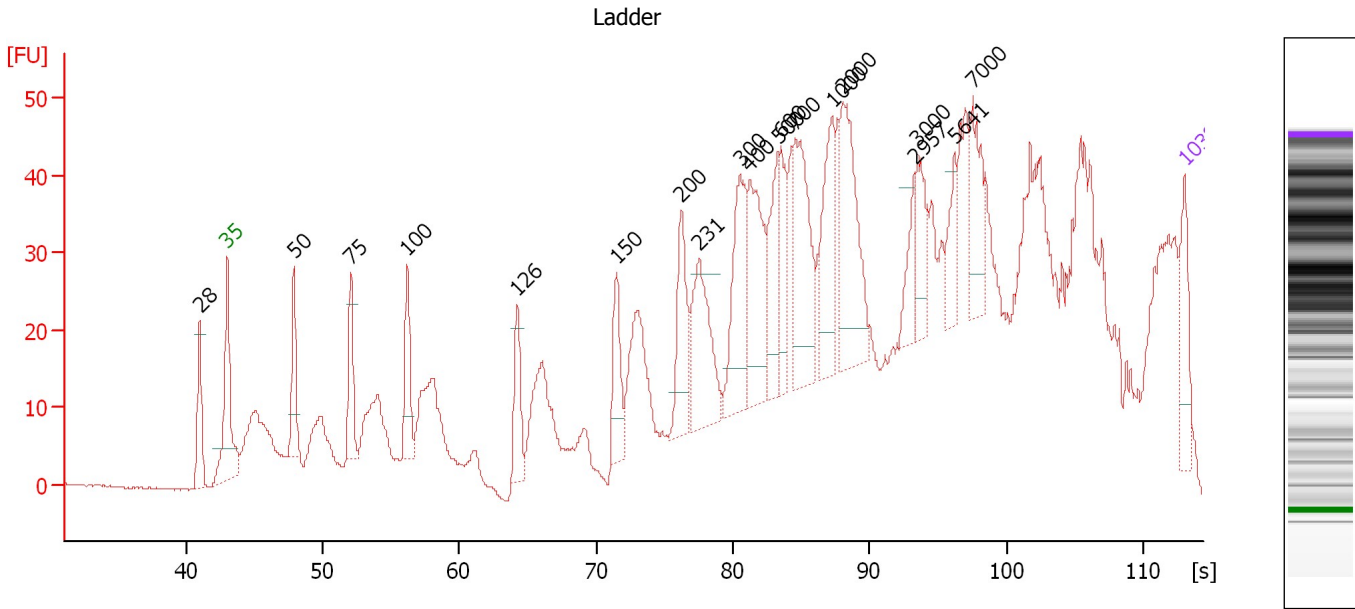
**Ladder**

Ladder Peak	Size	Area
1	35	160
2	50	210
3	100	208
4	150	221
5	200	242
6	300	270
7	400	305
8	500	306
9	600	336
10	700	321
11	1000	366
12	2000	413
13	3000	411
14	7000	400
15	10380	214

Assay Class: High Sensitivity DNA Assay  
 Data Path: C:\...ents and Settings\Bioanalyzer\2012-06-25\2012-06-25\_001.xad

Created: 6/25/2012 10:03:52 AM  
 Modified: 6/25/2012 2:00:53 PM

**Electropherogram Summary**



**Overall Results for Ladder**

Noise: 0.1

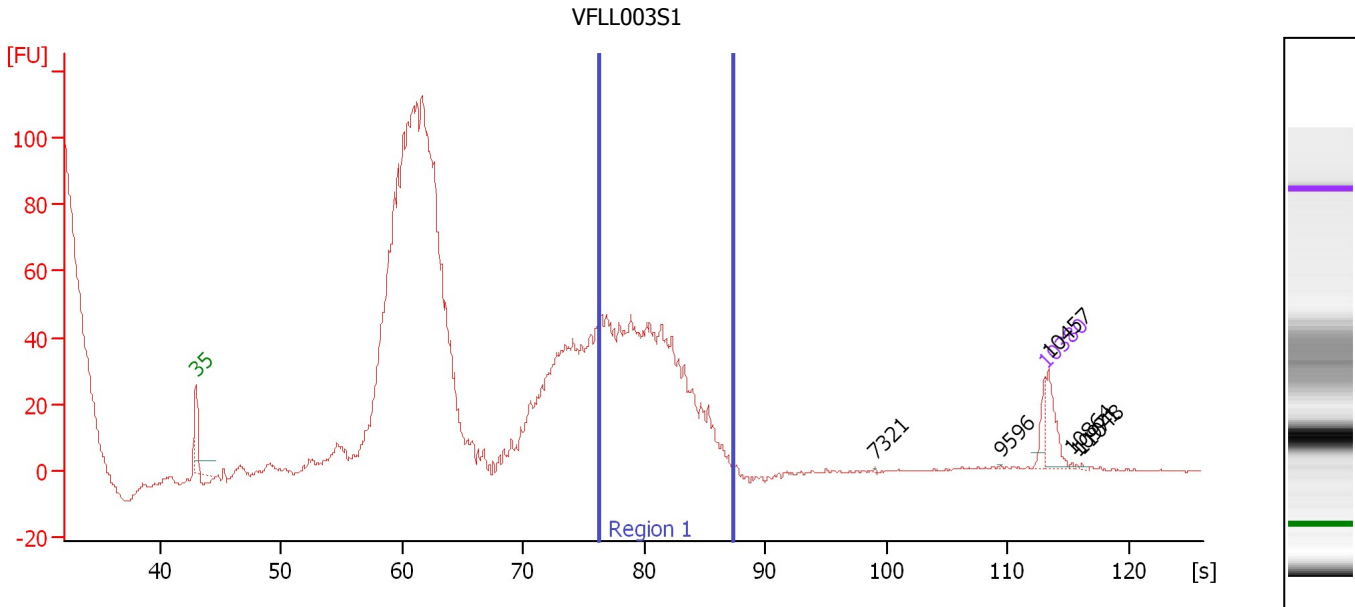
**Peak table for Ladder**

Peak	Size [bp]	Conc. [pg/μl]	Molarity [pmol/l]	Observations
1	28	0.00	0.0	
2	35	125.00	5,411.3	Lower Marker
3	50	150.00	4,545.5	Ladder Peak
4	75	0.00	0.0	
5	100	150.00	2,272.7	Ladder Peak
6	126	0.00	0.0	
7	150	150.00	1,515.2	Ladder Peak
8	200	150.00	1,136.4	Ladder Peak
9	231	0.00	0.0	
10	300	150.00	757.6	Ladder Peak
11	400	150.00	568.2	Ladder Peak
12	500	150.00	454.5	Ladder Peak
13	600	150.00	378.8	Ladder Peak
14	700	150.00	324.7	Ladder Peak
15	1,000	150.00	227.3	Ladder Peak
16	2,000	150.00	113.6	Ladder Peak
17	2,957	0.00	0.0	
18	3,000	150.00	75.8	Ladder Peak
19	5,641	0.00	0.0	
20	7,000	150.00	32.5	Ladder Peak
21	10,380	75.00	10.9	Upper Marker

Assay Class: High Sensitivity DNA Assay  
 Data Path: C:\...ents and Settings\Bioanalyzer\2012-06-25\2012-06-25\_001.xad

Created: 6/25/2012 10:03:52 AM  
 Modified: 6/25/2012 2:00:53 PM

**Electropherogram Summary Continued ...**



**Setpoint Deviations for sample 1 : VFL003S1**

Height Threshold [FU] : 1                      Width Threshold [s] : 0.2

**Overall Results for sample 1 : VFL003S1**

Number of peaks found: 6                      Corr. Area 1: 63.5  
 Noise: 0.4

**Peak table for sample 1 : VFL003S1**

Peak	Size [bp]	Conc. [pg/μl]	Molarity [pmol/l]	Observations
1	35	125.00	5,411.3	Lower Marker
2	7,321	2.27	0.5	
3	9,596	1.59	0.3	
4	10,380	75.00	10.9	Upper Marker
5	10,457	0.00	0.0	
6	10,864	0.00	0.0	
7	10,971	0.00	0.0	
8	11,048	0.00	0.0	

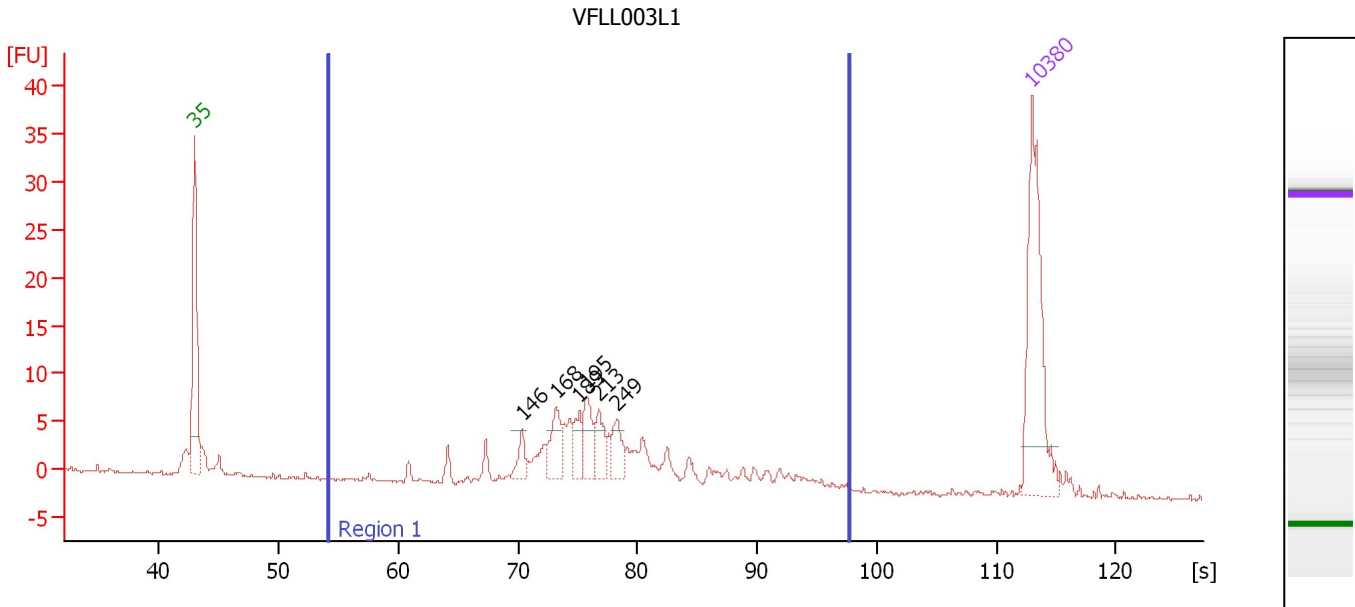
**Region table for sample 1 : VFL003S1**

From [bp]	To [bp]	Average Size [bp]	Molarity [pmol/l]	Conc. [pg/μl]	Corr. Area	% of Total	Size distribution in CV [%]	Color
200	1,000	296	3,638.5	666.54	63.5	15	26.3	Blue

Assay Class: High Sensitivity DNA Assay  
 Data Path: C:\...ents and Settings\Bioanalyzer\2012-06-25\2012-06-25\_001.xad

Created: 6/25/2012 10:03:52 AM  
 Modified: 6/25/2012 2:00:53 PM

**Electropherogram Summary Continued ...**



**Overall Results for sample 2 : VFL003L1**

Number of peaks found: 6                      Corr. Area 1: 113.0  
 Noise: 0.1

**Peak table for sample 2 : VFL003L1**

Peak	Size [bp]	Conc. [pg/μl]	Molarity [pmol/l]	Observations
1	35	125.00	5,411.3	Lower Marker
2	146	15.61	161.6	
3	168	30.69	277.2	
4	189	18.94	152.1	
5	195	28.58	221.6	
6	213	20.43	145.4	
7	249	19.96	121.6	
8	10,380	75.00	10.9	Upper Marker

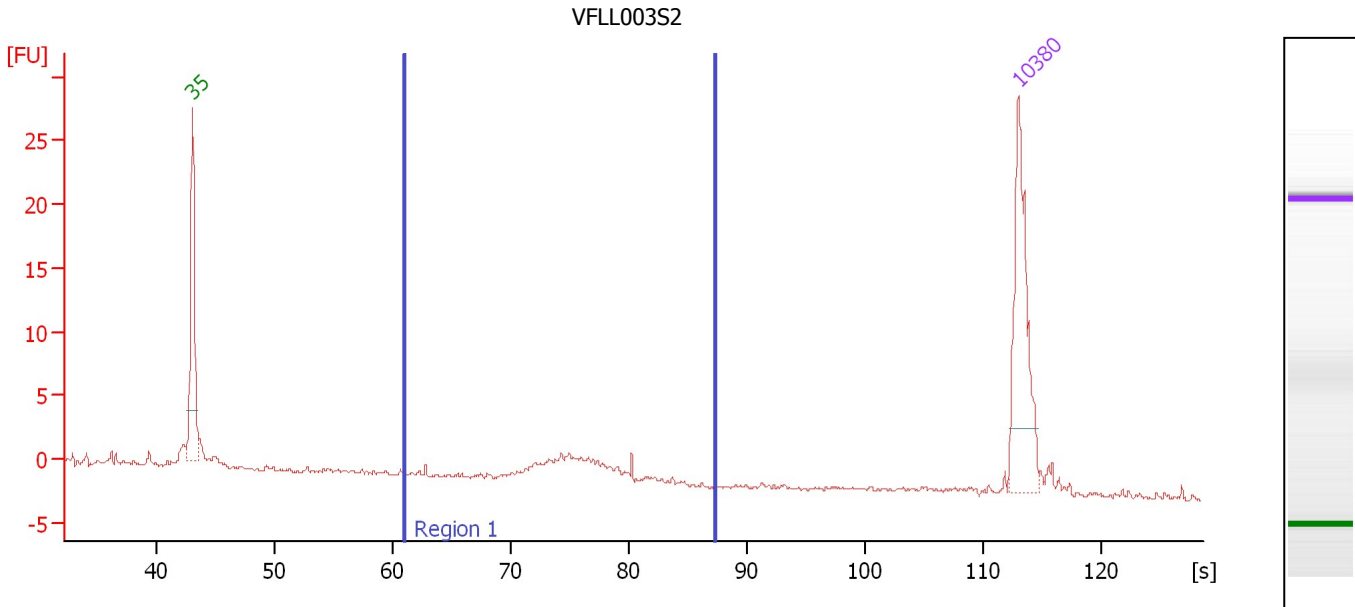
**Region table for sample 2 : VFL003L1**

From [bp]	To [bp]	Average Size [bp]	Molarity [pmol/l]	Conc. [pg/μl]	Corr. Area	% of Total	Size distribution in CV [%]	Color
88	7,021	633	2,061.9	290.57	113.0	88	100.0	Blue

Assay Class: High Sensitivity DNA Assay  
 Data Path: C:\...ents and Settings\Bioanalyzer\2012-06-25\2012-06-25\_001.xad

Created: 6/25/2012 10:03:52 AM  
 Modified: 6/25/2012 2:00:53 PM

**Electropherogram Summary Continued ...**



**Overall Results for sample 3 : VFL003S2**

Number of peaks found: 0                      Corr. Area 1: 17.4  
 Noise: 0.2

**Peak table for sample 3 : VFL003S2**

Peak	Size [bp]	Conc. [pg/μl]	Molarity [pmol/l]	Observations
1	35	125.00	5,411.3	Lower Marker
2	10,380	75.00	10.9	Upper Marker

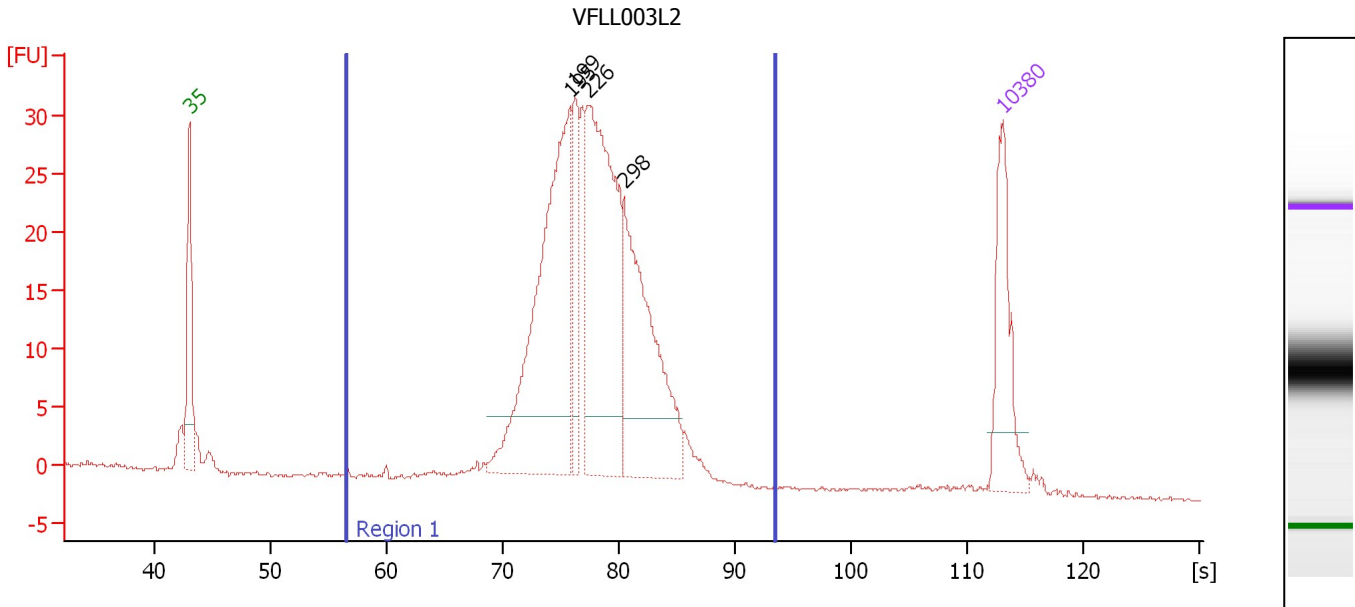
**Region table for sample 3 : VFL003S2**

From [bp]	To [bp]	Average Size [bp]	Molarity [pmol/l]	Conc. [pg/μl]	Corr. Area	% of Total	Size distribution in CV [%]	Color
116	1,000	208	531.9	67.43	17.4	48	30.9	Blue

Assay Class: High Sensitivity DNA Assay  
 Data Path: C:\...ents and Settings\Bioanalyzer\2012-06-25\2012-06-25\_001.xad

Created: 6/25/2012 10:03:52 AM  
 Modified: 6/25/2012 2:00:53 PM

**Electropherogram Summary Continued ...**



**Overall Results for sample 4 : VFL003L2**

Number of peaks found: 4                      Corr. Area 1: 419.6  
 Noise: 0.1

**Peak table for sample 4 : VFL003L2**

Peak	Size [bp]	Conc. [pg/μl]	Molarity [pmol/l]	Observations
1	35	125.00	5,411.3	Lower Marker
2	195	455.32	3,530.5	
3	199	87.02	661.5	
4	226	391.72	2,631.5	
5	298	260.61	1,325.4	
6	10,380	75.00	10.9	Upper Marker

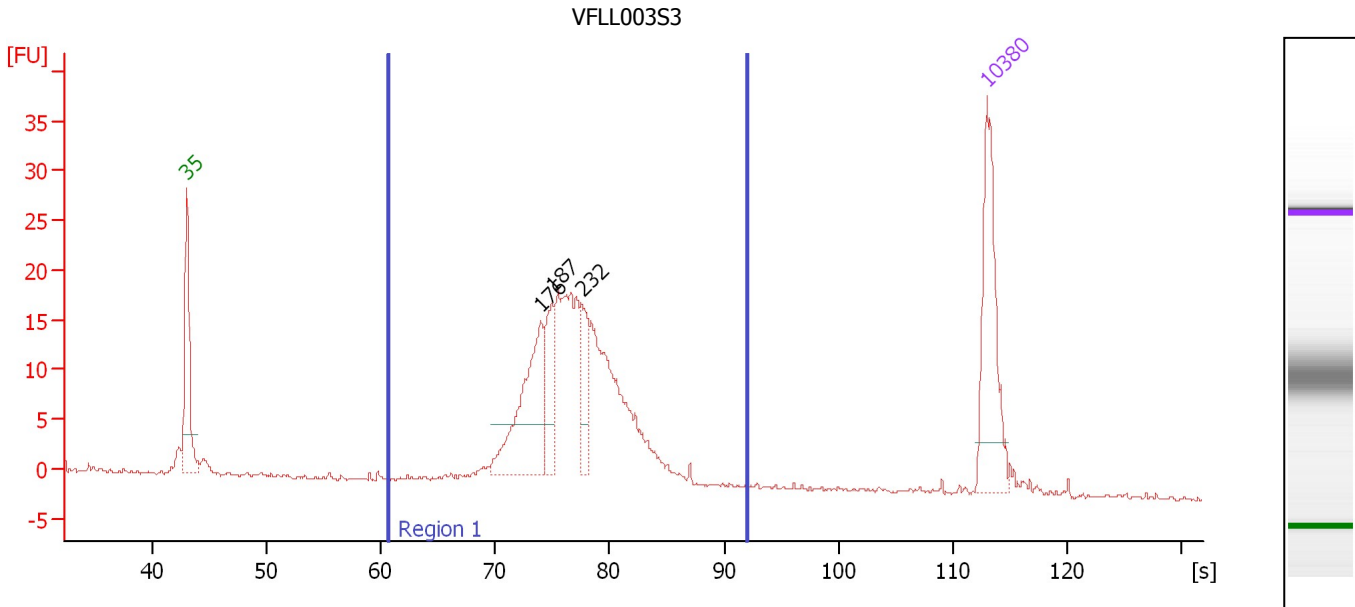
**Region table for sample 4 : VFL003L2**

From [bp]	To [bp]	Average Size [bp]	Molarity [pmol/l]	Conc. [pg/μl]	Corr. Area	% of Total	Size distribution in CV [%]	Color
101	2,992	289	8,974.0	1,335.77	419.6	96	66.0	Blue

Assay Class: High Sensitivity DNA Assay  
 Data Path: C:\...ents and Settings\Bioanalyzer\2012-06-25\2012-06-25\_001.xad

Created: 6/25/2012 10:03:52 AM  
 Modified: 6/25/2012 2:00:53 PM

**Electropherogram Summary Continued ...**



**Overall Results for sample 5 : VFL003S3**

Number of peaks found: 3                      Corr. Area 1: 226.9  
 Noise: 0.2

**Peak table for sample 5 : VFL003S3**

Peak	Size [bp]	Conc. [pg/μl]	Molarity [pmol/l]	Observations
1	35	125.00	5,411.3	Lower Marker
2	176	138.58	1,192.5	
3	187	51.71	418.9	
4	232	43.95	287.2	
5	10,380	75.00	10.9	Upper Marker

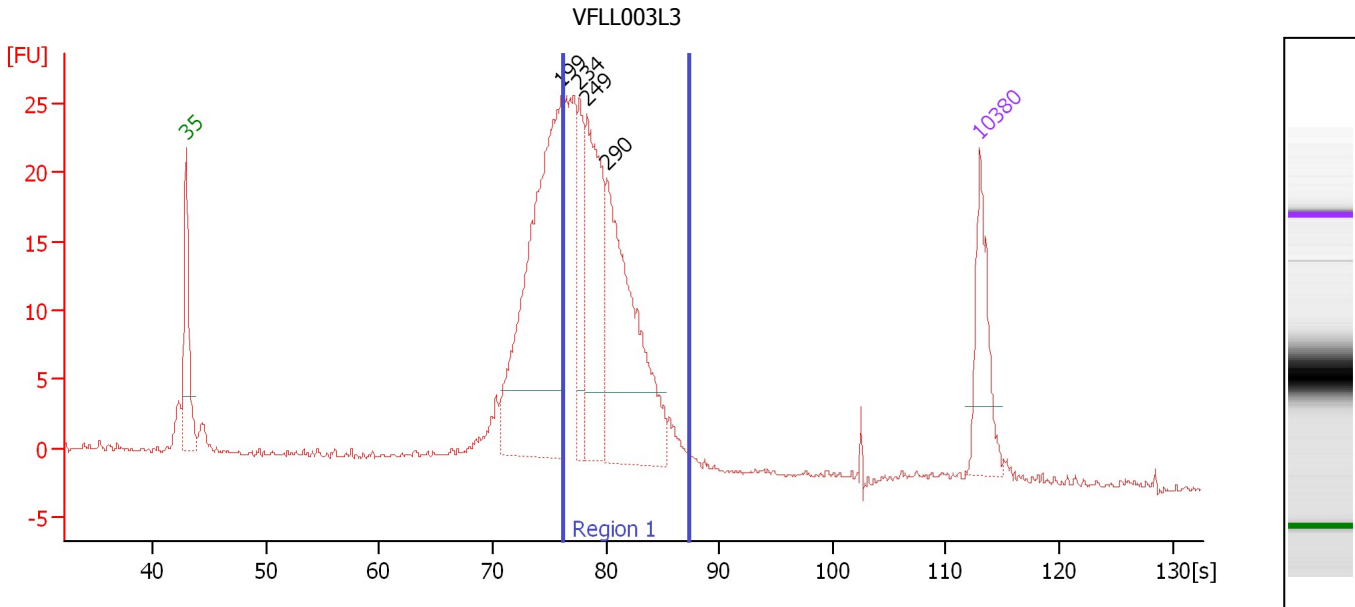
**Region table for sample 5 : VFL003S3**

From [bp]	To [bp]	Average Size [bp]	Molarity [pmol/l]	Conc. [pg/μl]	Corr. Area	% of Total	Size distribution in CV [%]	Color
114	2,713	264	4,374.0	617.01	226.9	94	69.6	Blue

Assay Class: High Sensitivity DNA Assay  
 Data Path: C:\...ents and Settings\Bioanalyzer\2012-06-25\2012-06-25\_001.xad

Created: 6/25/2012 10:03:52 AM  
 Modified: 6/25/2012 2:00:53 PM

**Electropherogram Summary Continued ...**



**Overall Results for sample 6 : VFL003L3**

Number of peaks found: 4                      Corr. Area 1: 207.6  
 Noise: 0.2

**Peak table for sample 6 : VFL003L3**

Peak	Size [bp]	Conc. [pg/μl]	Molarity [pmol/l]	Observations
1	35	125.00	5,411.3	Lower Marker
2	199	618.62	4,713.5	
3	234	101.93	660.0	
4	249	259.33	1,574.9	
5	290	358.76	1,871.6	
6	10,380	75.00	10.9	Upper Marker

**Region table for sample 6 : VFL003L3**

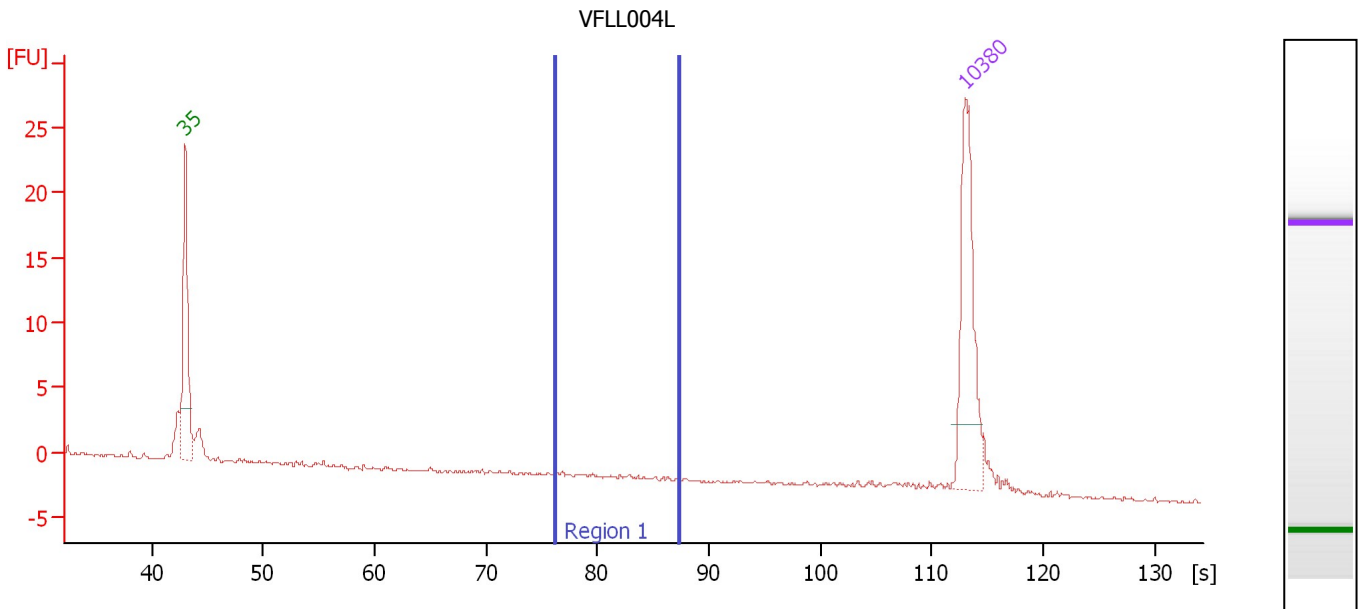
From [bp]	To [bp]	Average Size [bp]	Molarity [pmol/l]	Conc. [pg/μl]	Corr. Area	% of Total	Size distribution in CV [%]	Color
200	1,000	339	5,043.8	953.22	207.6	55	47.0	Blue



Assay Class: High Sensitivity DNA Assay  
 Data Path: C:\...ents and Settings\Bioanalyzer\2012-06-25\2012-06-25\_001.xad

Created: 6/25/2012 10:03:52 AM  
 Modified: 6/25/2012 2:00:53 PM

**Electropherogram Summary Continued ...**



**Overall Results for sample 7 : VFL004L**

Number of peaks found: 0                      Corr. Area 1: 0.1  
 Noise: 0.1

**Peak table for sample 7 : VFL004L**

Peak	Size [bp]	Conc. [pg/μl]	Molarity [pmol/l]	Observations
1	35	125.00	5,411.3	Lower Marker
2	10,380	75.00	10.9	Upper Marker

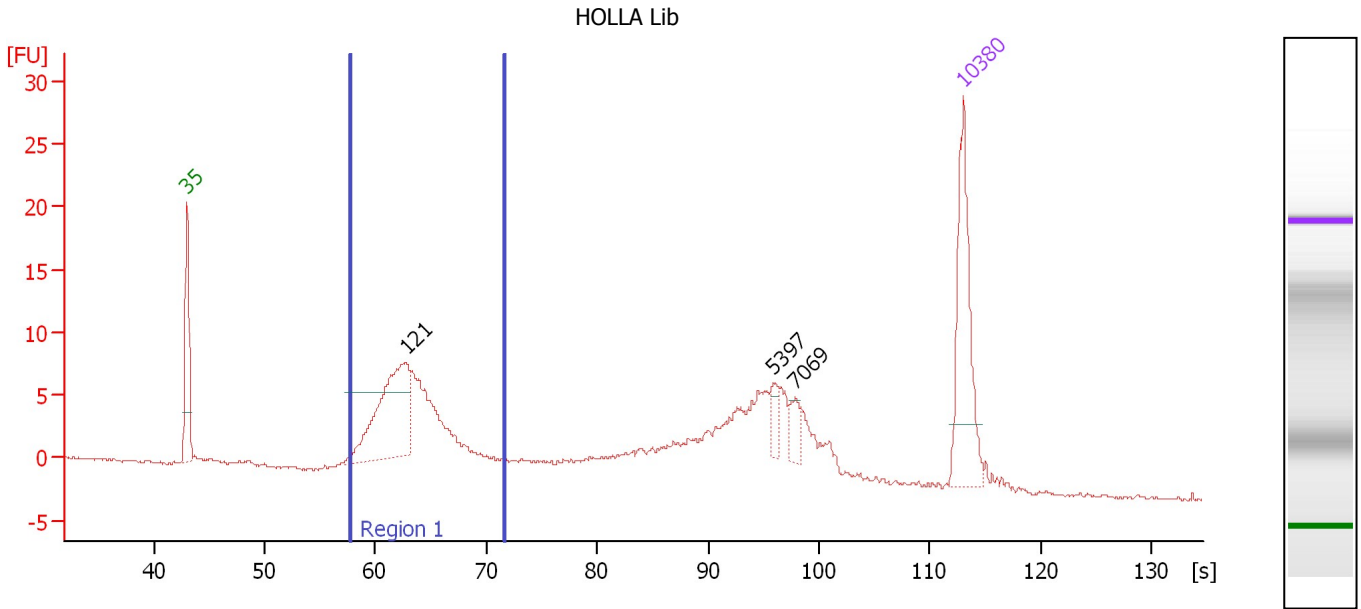
**Region table for sample 7 : VFL004L**

From [bp]	To [bp]	Average Size [bp]	Molarity [pmol/l]	Conc. [pg/μl]	Corr. Area	% of Total	Size distribution in CV [%]	Color
200	1,000	475	1.4	0.30	0.1	1	52.5	Blue

Assay Class: High Sensitivity DNA Assay  
 Data Path: C:\...ents and Settings\Bioanalyzer\2012-06-25\2012-06-25\_001.xad

Created: 6/25/2012 10:03:52 AM  
 Modified: 6/25/2012 2:00:53 PM

**Electropherogram Summary Continued ...**



**Overall Results for sample 8 : HOLLA Lib**

Number of peaks found: 3                      Corr. Area 1: 91.2  
 Noise: 0.1

**Peak table for sample 8 : HOLLA Lib**

Peak	Size [bp]	Conc. [pg/μl]	Molarity [pmol/l]	Observations
1	35	125.00	5,411.3	Lower Marker
2	121	167.99	2,096.2	
3	5,397	10.85	3.0	
4	7,069	12.24	2.6	
5	10,380	75.00	10.9	Upper Marker

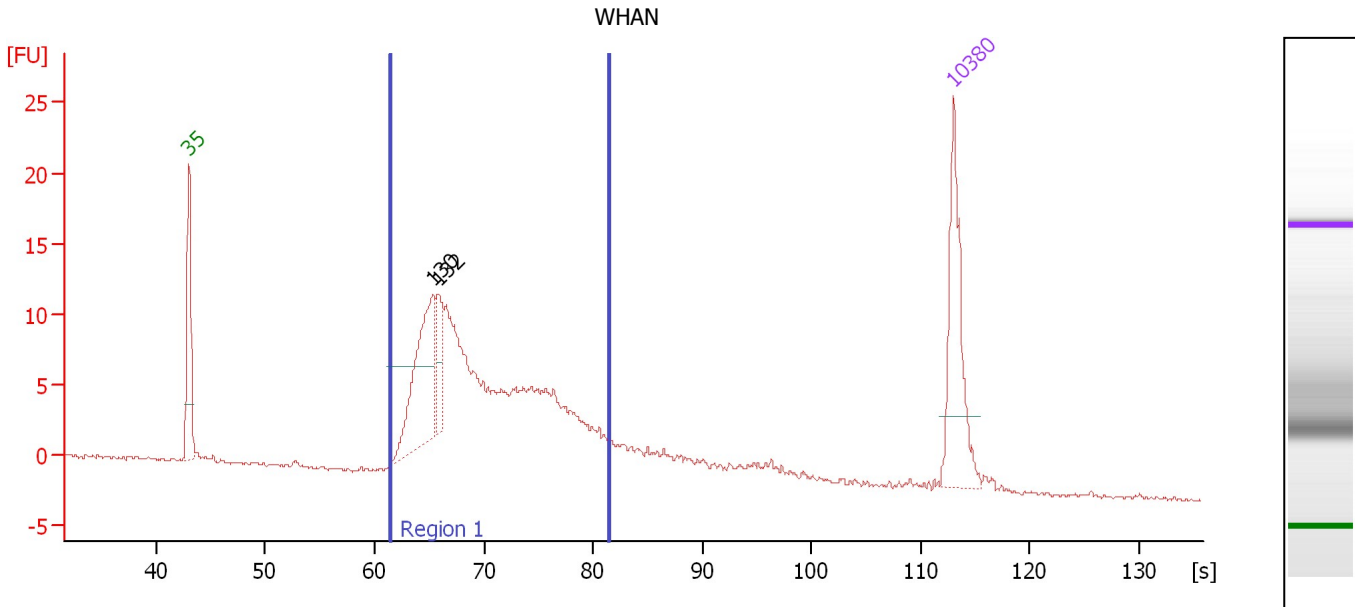
**Region table for sample 8 : HOLLA Lib**

From [bp]	To [bp]	Average Size [bp]	Molarity [pmol/l]	Conc. [pg/μl]	Corr. Area	% of Total	Size distribution in CV [%]	Color
105	152	124	4,804.5	393.10	91.2	42	7.9	Blue

Assay Class: High Sensitivity DNA Assay  
 Data Path: C:\...ents and Settings\Bioanalyzer\2012-06-25\2012-06-25\_001.xad

Created: 6/25/2012 10:03:52 AM  
 Modified: 6/25/2012 2:00:53 PM

**Electropherogram Summary Continued ...**



**Overall Results for sample 9 : WHAN**

Number of peaks found: 2                      Corr. Area 1: 179.5  
 Noise: 0.1

**Peak table for sample 9 : WHAN**

Peak	Size [bp]	Conc. [pg/μl]	Molarity [pmol/l]	Observations
1	35	125.00	5,411.3	Lower Marker
2	130	160.68	1,875.6	
3	132	48.96	563.2	
4	10,380	75.00	10.9	Upper Marker

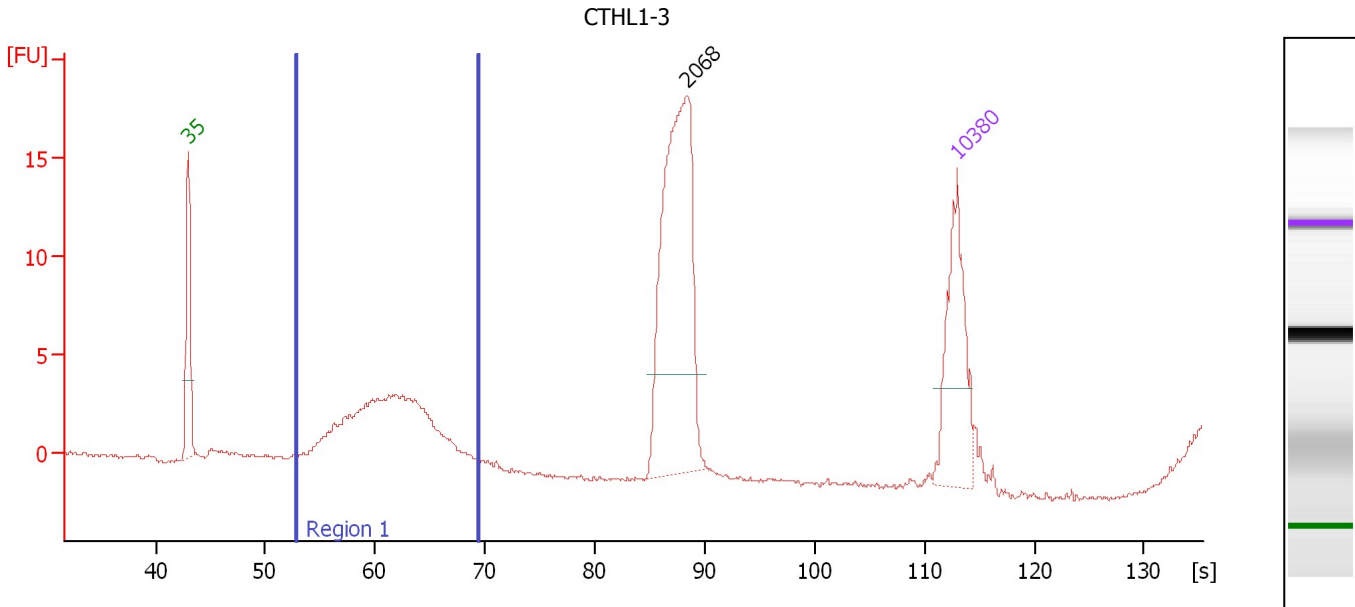
**Region table for sample 9 : WHAN**

From [bp]	To [bp]	Average Size [bp]	Molarity [pmol/l]	Conc. [pg/μl]	Corr. Area	% of Total	Size distribution in CV [%]	Color
117	415	165	8,494.7	846.07	179.5	82	31.3	Blue

Assay Class: High Sensitivity DNA Assay  
 Data Path: C:\...ents and Settings\Bioanalyzer\2012-06-25\2012-06-25\_001.xad

Created: 6/25/2012 10:03:52 AM  
 Modified: 6/25/2012 2:00:53 PM

**Electropherogram Summary Continued ...**



**Overall Results for sample 10 : CTHL1-3**

Number of peaks found: 1      Corr. Area 1: 35.8  
 Noise: 0.1

**Peak table for sample 10 : CTHL1-3**

Peak	Size [bp]	Conc. [pg/μl]	Molarity [pmol/l]	Observations
1	35	125.00	5,411.3	Lower Marker
2	2,068	206.90	151.6	
3	10,380	75.00	10.9	Upper Marker

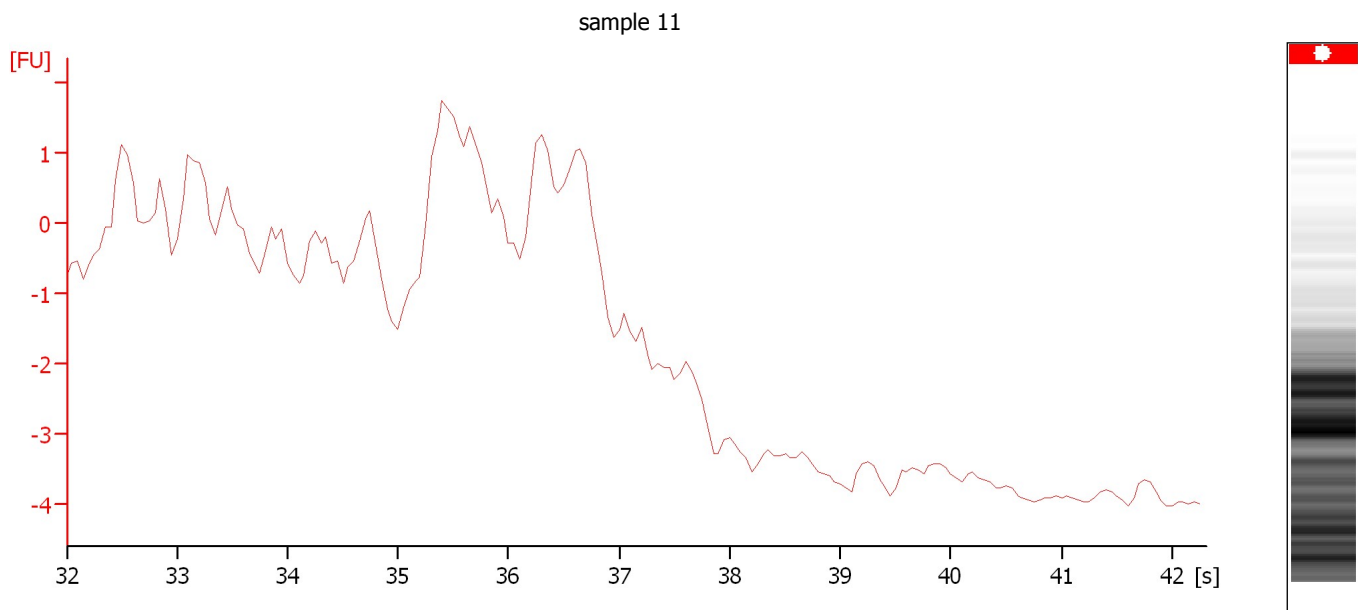
**Region table for sample 10 : CTHL1-3**

From [bp]	To [bp]	Average Size [bp]	Molarity [pmol/l]	Conc. [pg/μl]	Corr. Area	% of Total	Size distribution in CV [%]	Color
80	143	116	2,733.5	207.81	35.8	37	8.2	Blue

Assay Class: High Sensitivity DNA Assay  
Data Path: C:\...ents and Settings\Bioanalyzer\2012-06-25\2012-06-25\_001.xad

Created: 6/25/2012 10:03:52 AM  
Modified: 6/25/2012 2:00:53 PM

**Electropherogram Summary Continued ...**



**Setpoint Deviations for sample 11 : sample 11**

End Analysis Time Range [s] : 42.3

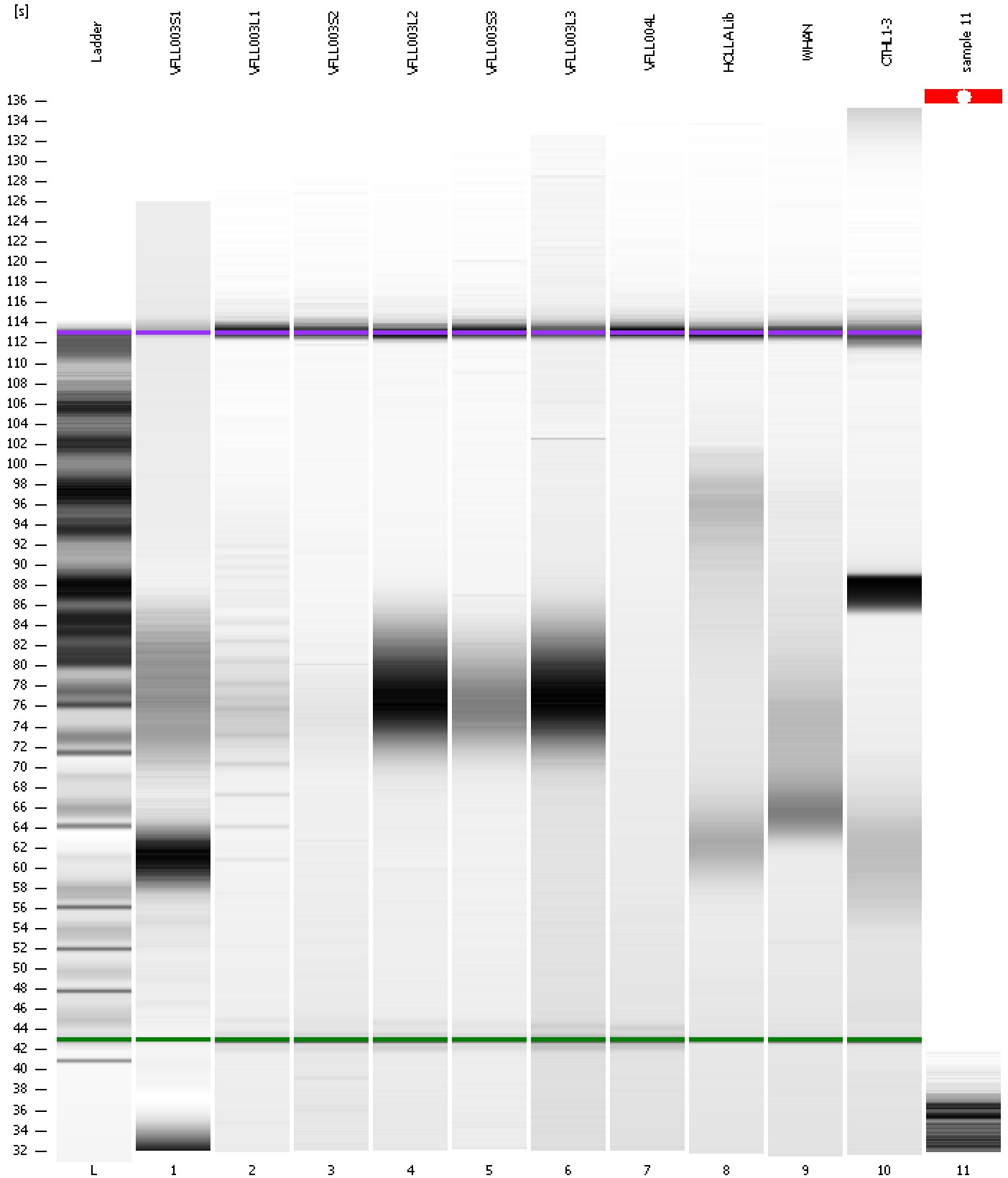
**Overall Results for sample 11 : sample 11**

Noise: 0.4

Assay Class: High Sensitivity DNA Assay  
Data Path: C:\...ents and Settings\Bioanalyzer\2012-06-25\2012-06-25\_001.xad

Created: 6/25/2012 10:03:52 AM  
Modified: 6/25/2012 2:00:53 PM

**Gel Image**



Assay Class: High Sensitivity DNA Assay  
 Data Path: C:\...ents and Settings\Bioanalyzer\2012-06-25\2012-06-25\_001.xad

Created: 6/25/2012 10:03:52 AM  
 Modified: 6/25/2012 2:00:53 PM

**Run Logbook**

Description	Number	Source	Category	Sub Category	Time	Time Zone	User	Host
Run aborted on port 1		Instrument	Run		6/25/2012 10:43:19 AM	(GMT --07:00) Pacific Standard Time	UC Davis	D8XSMGH1
Run started on port 1 (File: C:\Documents and Settings\Bioanalyzer\2012-06-25\2012-06-25_001.xad)		Instrument	Run		6/25/2012 10:03:57 AM	(GMT --07:00) Pacific Standard Time	UC Davis	D8XSMGH1
Product Number : G2938B		Instrument	Run		6/25/2012 10:03:57 AM	(GMT --07:00) Pacific Standard Time	UC Davis	D8XSMGH1
Name :		Instrument	Run		6/25/2012 10:03:57 AM	(GMT --07:00) Pacific Standard Time	UC Davis	D8XSMGH1
Vendor : Agilent Technologies		Instrument	Run		6/25/2012 10:03:57 AM	(GMT --07:00) Pacific Standard Time	UC Davis	D8XSMGH1
Serial# : DE13701086		Instrument	Run		6/25/2012 10:03:57 AM	(GMT --07:00) Pacific Standard Time	UC Davis	D8XSMGH1
Firmware : C.01.069		Instrument	Run		6/25/2012 10:03:57 AM	(GMT --07:00) Pacific Standard Time	UC Davis	D8XSMGH1
Cartridge : Electrode		Instrument	Run		6/25/2012 10:03:57 AM	(GMT --07:00) Pacific Standard Time	UC Davis	D8XSMGH1