

Assay Class: Plant RNA Nano  
Data Path: C:\...ents and Settings\Bioanalyzer\2012-06-25\2012-06-25\_002.xad

Created: 6/25/2012 10:46:51 AM  
Modified: 6/25/2012 11:10:35 AM

**Electrophoresis Assay Details**

**General Analysis Settings**

Number of Available Sample and Ladder Wells (Max.) : 13  
Minimum Visible Range [s] : 17  
Maximum Visible Range [s] : 70  
Start Analysis Time Range [s] : 19  
End Analysis Time Range [s] : 69  
Ladder Concentration [ng/μl] : 150  
Lower Marker Concentration [ng/μl] : 0  
Upper Marker Concentration [ng/μl] : 0  
Used Lower Marker for Quantitation  
Standard Curve Fit is Logarithmic  
Show Data Aligned to Lower Marker

**Integrator Settings**

Integration Start Time [s] : 19  
Integration End Time [s] : 69  
Slope Threshold : 0.6  
Height Threshold [FU] : 0.2  
Area Threshold : 0.1  
Width Threshold [s] : 0.2  
Baseline Plateau [s] : 6

**Filter Settings**

Filter Width [s] : 0.5  
Polynomial Order : 4

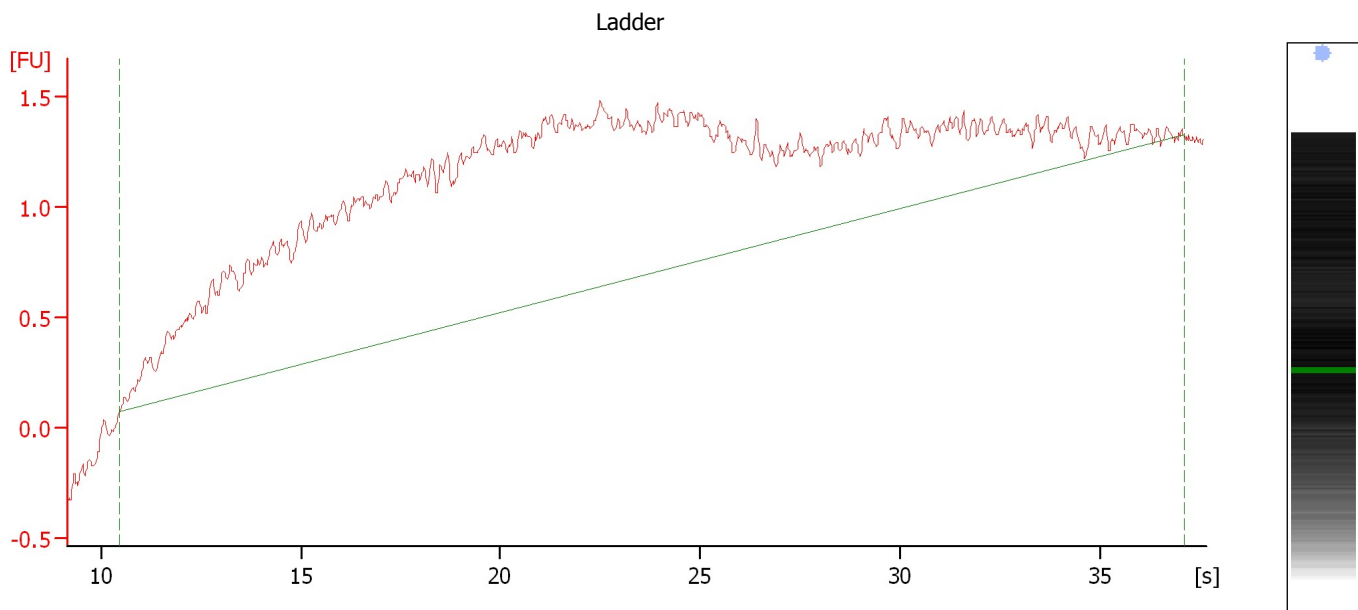
**Ladder**

Ladder Peak	Size
1	25
2	200
3	500
4	1000
5	2000
6	4000

Assay Class: Plant RNA Nano  
Data Path: C:\...ents and Settings\Bioanalyzer\2012-06-25\2012-06-25\_002.xad

Created: 6/25/2012 10:46:51 AM  
Modified: 6/25/2012 11:10:35 AM

### Electropherogram Summary



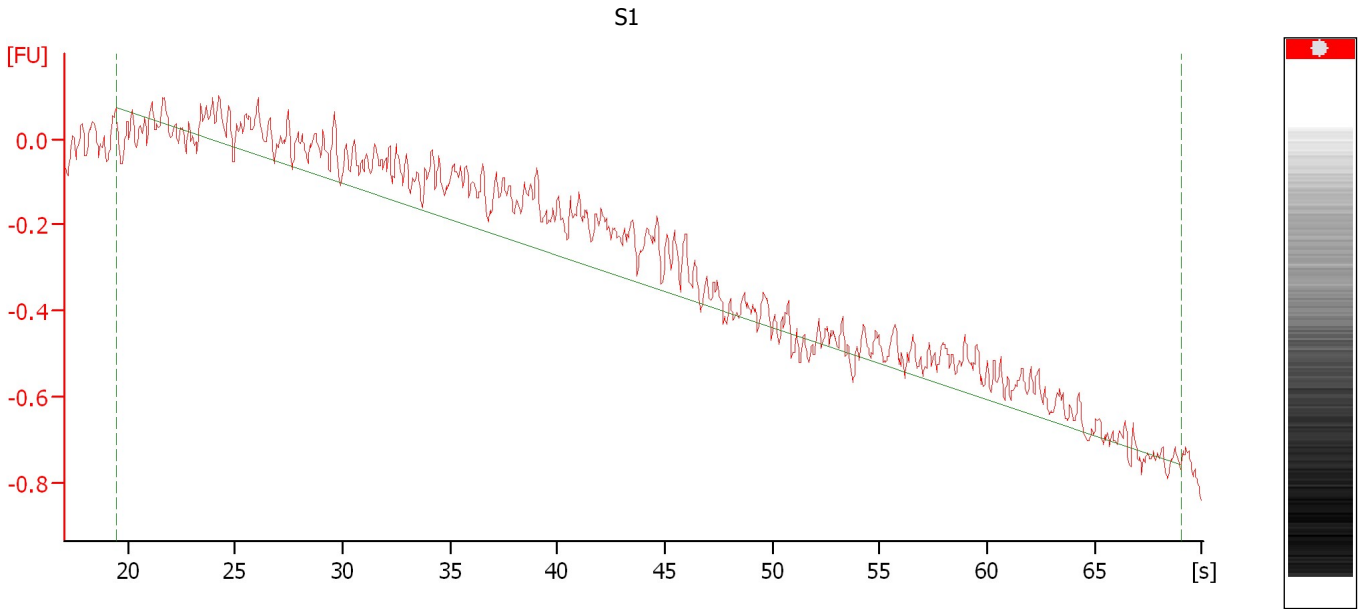
### Overall Results for Ladder

RNA Area:	55.9	Result Flagging Color:	<span style="background-color: #6699ff; border: 1px solid black; display: inline-block; width: 20px; height: 10px;"></span>
RNA Concentration:	150 ng/ $\mu$ l	Result Flagging Label:	All Other Samples

Assay Class: Plant RNA Nano  
Data Path: C:\...ents and Settings\Bioanalyzer\2012-06-25\2012-06-25\_002.xad

Created: 6/25/2012 10:46:51 AM  
Modified: 6/25/2012 11:10:35 AM

**Electropherogram Summary Continued ...**



**Overall Results for sample 1 : S1**

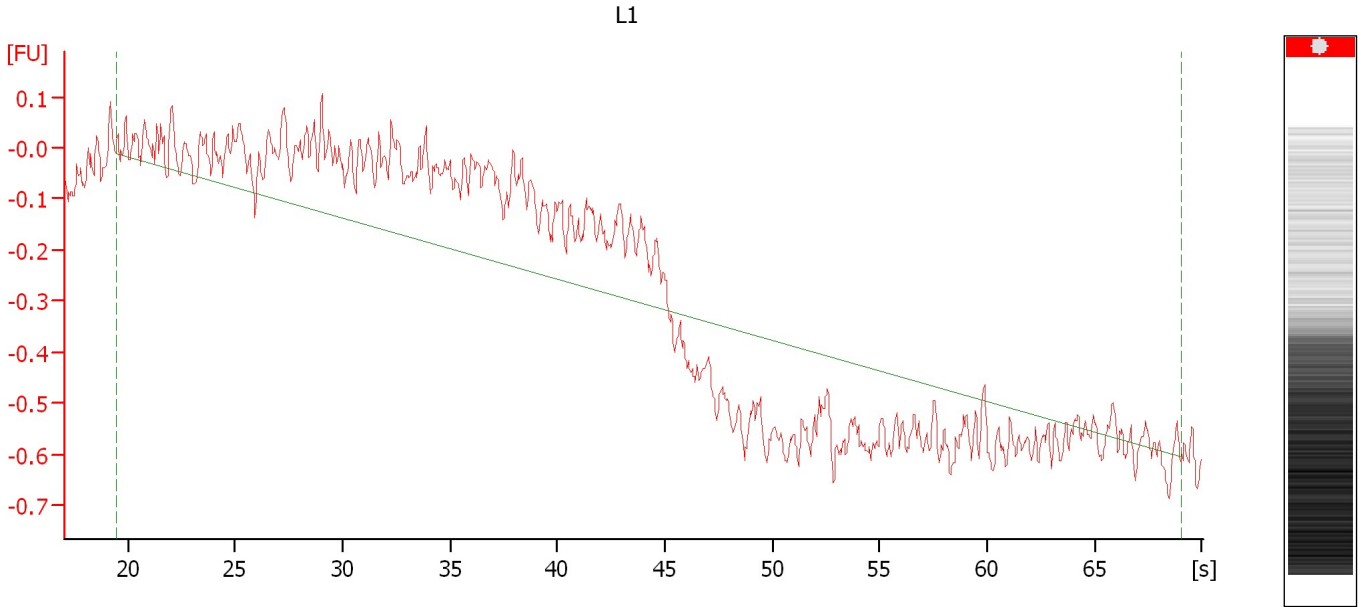
RNA Concentration: 18 ng/μl  
rRNA Ratio [25s / 18s]: 0.0

Result Flagging Color:   
Result Flagging Label: RIN N/A

Assay Class: Plant RNA Nano  
Data Path: C:\...ents and Settings\Bioanalyzer\2012-06-25\2012-06-25\_002.xad

Created: 6/25/2012 10:46:51 AM  
Modified: 6/25/2012 11:10:35 AM

**Electropherogram Summary Continued ...**



**Overall Results for sample 2 : L1**

RNA Concentration: 23 ng/μl  
rRNA Ratio [25s / 18s]: 0.0

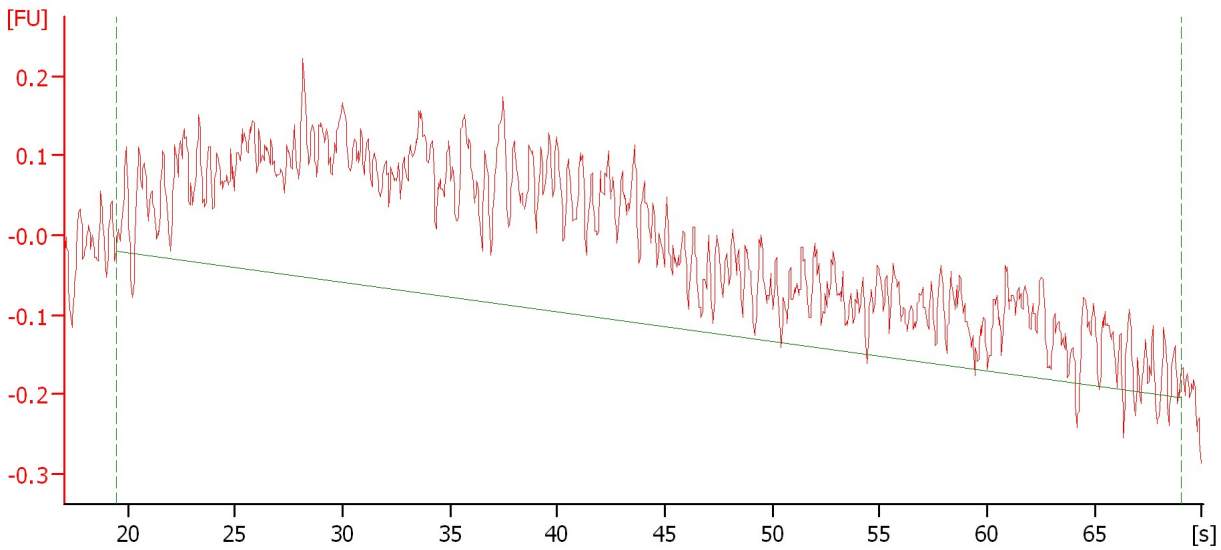
Result Flagging Color:   
Result Flagging Label: RIN N/A

Assay Class: Plant RNA Nano  
Data Path: C:\...ents and Settings\Bioanalyzer\2012-06-25\2012-06-25\_002.xad

Created: 6/25/2012 10:46:51 AM  
Modified: 6/25/2012 11:10:35 AM

**Electropherogram Summary Continued ...**

2



**Overall Results for sample 3 : 2**

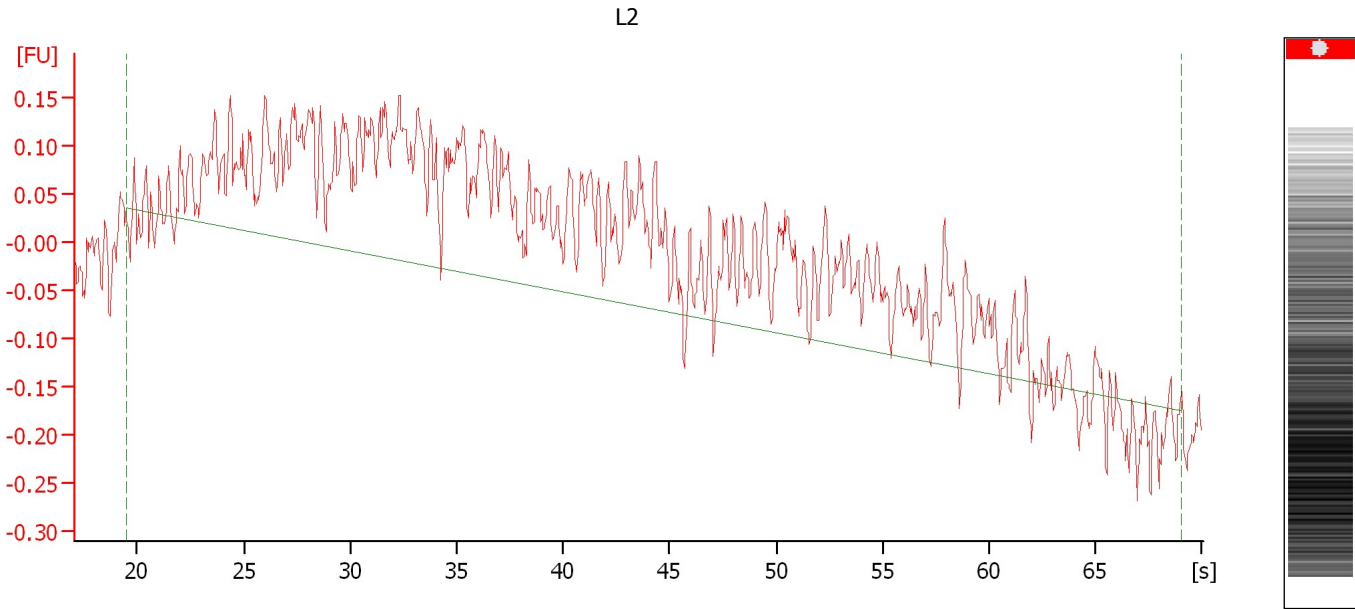
RNA Concentration: 38 ng/ $\mu$ l  
rRNA Ratio [25s / 18s]: 0.0

Result Flagging Color:   
Result Flagging Label: RIN N/A

Assay Class: Plant RNA Nano  
Data Path: C:\...ents and Settings\Bioanalyzer\2012-06-25\2012-06-25\_002.xad

Created: 6/25/2012 10:46:51 AM  
Modified: 6/25/2012 11:10:35 AM

**Electropherogram Summary Continued ...**



**Overall Results for sample 4 : L2**

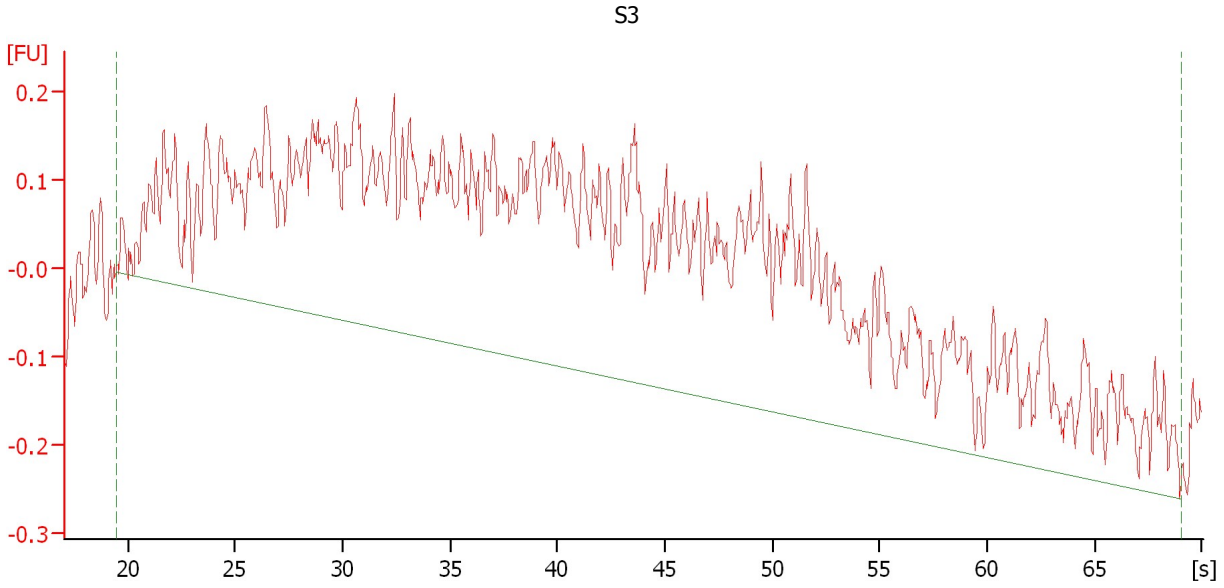
RNA Concentration: 23 ng/ $\mu$ l  
rRNA Ratio [25s / 18s]: 0.0

Result Flagging Color:   
Result Flagging Label: RIN N/A

Assay Class: Plant RNA Nano  
Data Path: C:\...ents and Settings\Bioanalyzer\2012-06-25\2012-06-25\_002.xad

Created: 6/25/2012 10:46:51 AM  
Modified: 6/25/2012 11:10:35 AM

**Electropherogram Summary Continued ...**



**Overall Results for sample 5 : S3**

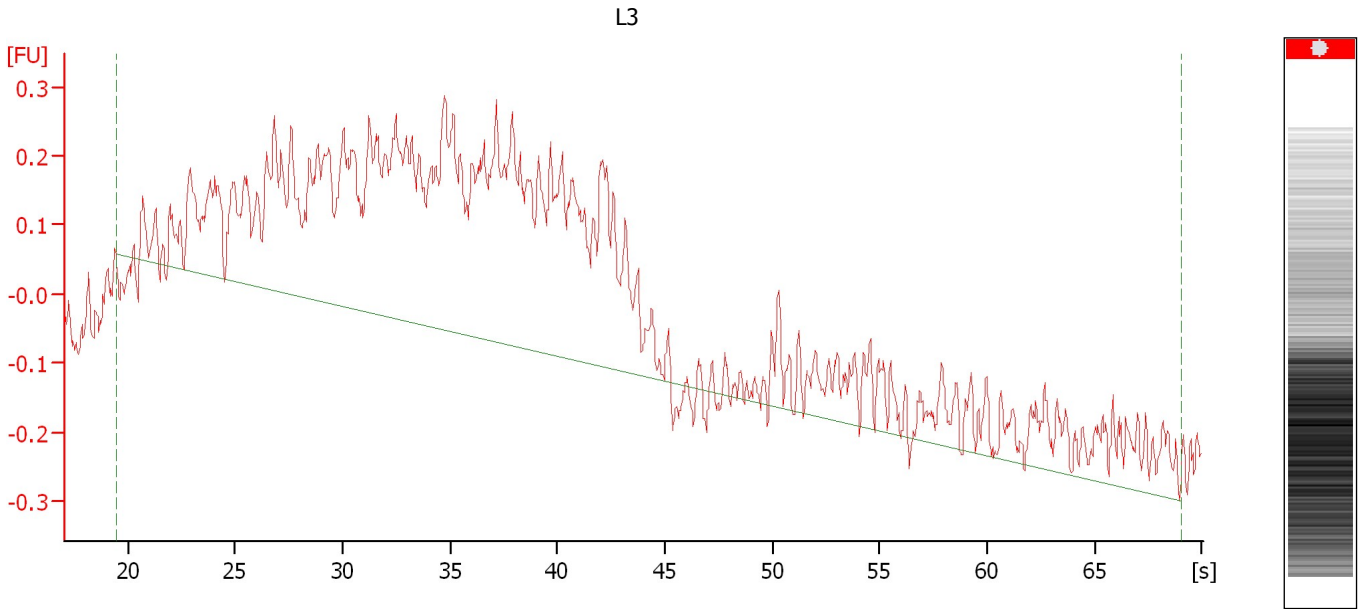
RNA Concentration: 50 ng/μl  
rRNA Ratio [25s / 18s]: 0.0

Result Flagging Color:   
Result Flagging Label: RIN N/A

Assay Class: Plant RNA Nano  
Data Path: C:\...ents and Settings\Bioanalyzer\2012-06-25\2012-06-25\_002.xad

Created: 6/25/2012 10:46:51 AM  
Modified: 6/25/2012 11:10:35 AM

**Electropherogram Summary Continued ...**



**Overall Results for sample 6 : L3**

RNA Concentration: 41 ng/μl  
rRNA Ratio [25s / 18s]: 0.0

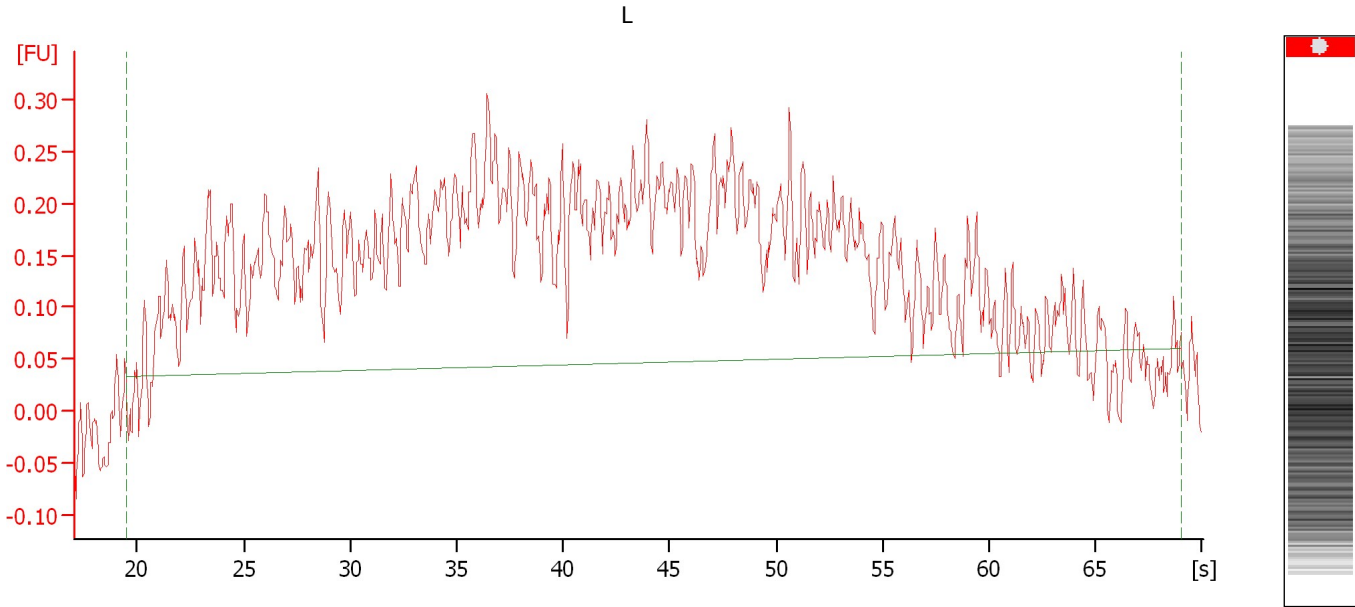
Result Flagging Color:   
Result Flagging Label: RIN N/A



Assay Class: Plant RNA Nano  
Data Path: C:\...ents and Settings\Bioanalyzer\2012-06-25\2012-06-25\_002.xad

Created: 6/25/2012 10:46:51 AM  
Modified: 6/25/2012 11:10:35 AM

**Electropherogram Summary Continued ...**



**Overall Results for sample 7 : L**

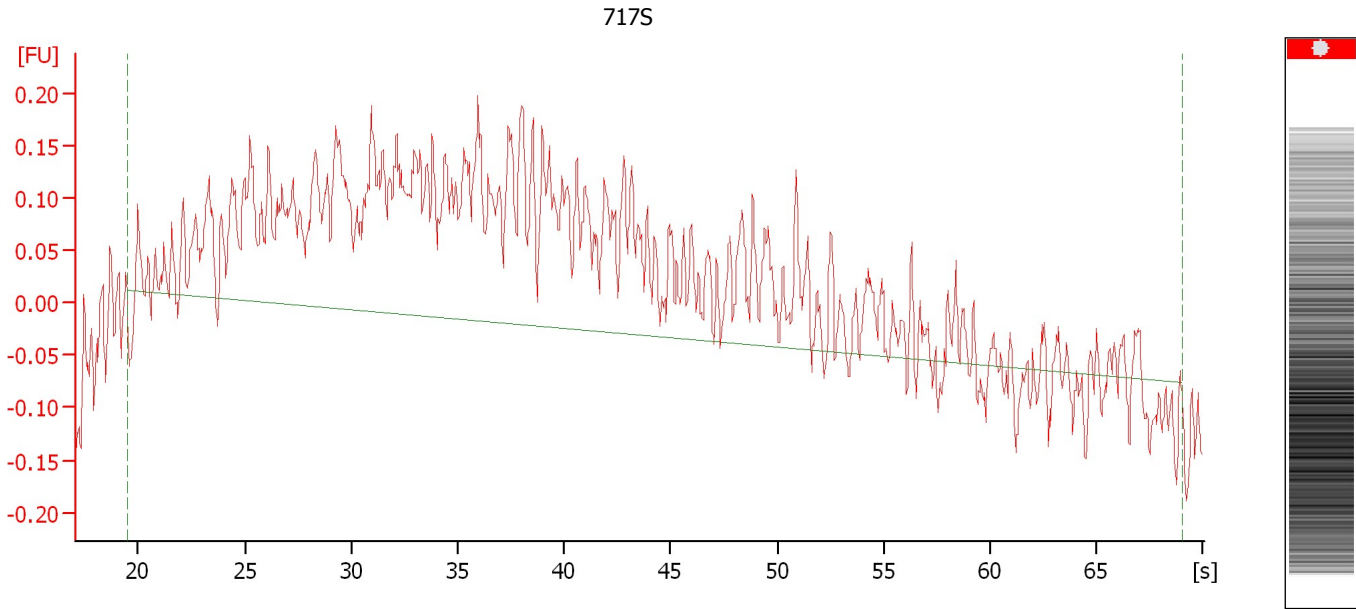
RNA Concentration: 36 ng/ $\mu$ l  
rRNA Ratio [25s / 18s]: 0.0

Result Flagging Color:   
Result Flagging Label: RIN N/A

Assay Class: Plant RNA Nano  
Data Path: C:\...ents and Settings\Bioanalyzer\2012-06-25\2012-06-25\_002.xad

Created: 6/25/2012 10:46:51 AM  
Modified: 6/25/2012 11:10:35 AM

**Electropherogram Summary Continued ...**



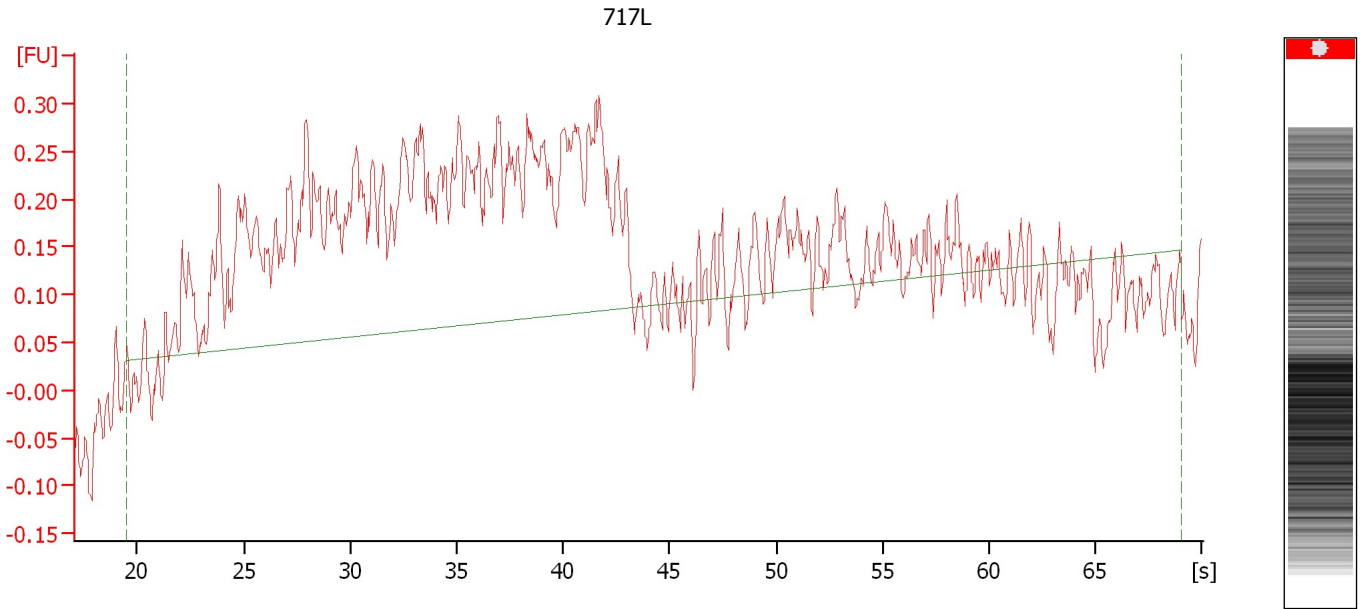
**Overall Results for sample 8 : 717S**

RNA Concentration:	24 ng/μl	Result Flagging Color:	
rRNA Ratio [25s / 18s]:	0.0	Result Flagging Label:	RIN N/A

Assay Class: Plant RNA Nano  
Data Path: C:\...ents and Settings\Bioanalyzer\2012-06-25\2012-06-25\_002.xad

Created: 6/25/2012 10:46:51 AM  
Modified: 6/25/2012 11:10:35 AM

**Electropherogram Summary Continued ...**



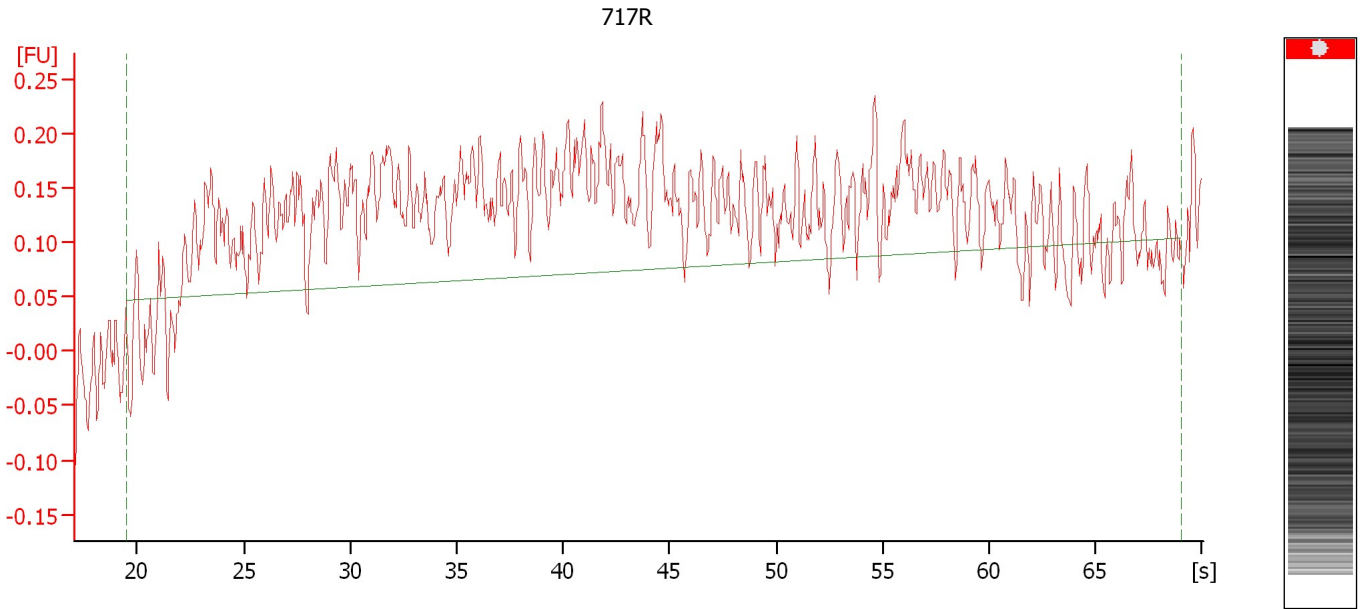
**Overall Results for sample 9 : 717L**

RNA Concentration:	26 ng/ $\mu$ l	Result Flagging Color:	<input type="checkbox"/>
rRNA Ratio [25s / 18s]:	0.0	Result Flagging Label:	RIN N/A

Assay Class: Plant RNA Nano  
Data Path: C:\...ents and Settings\Bioanalyzer\2012-06-25\2012-06-25\_002.xad

Created: 6/25/2012 10:46:51 AM  
Modified: 6/25/2012 11:10:35 AM

**Electropherogram Summary Continued ...**



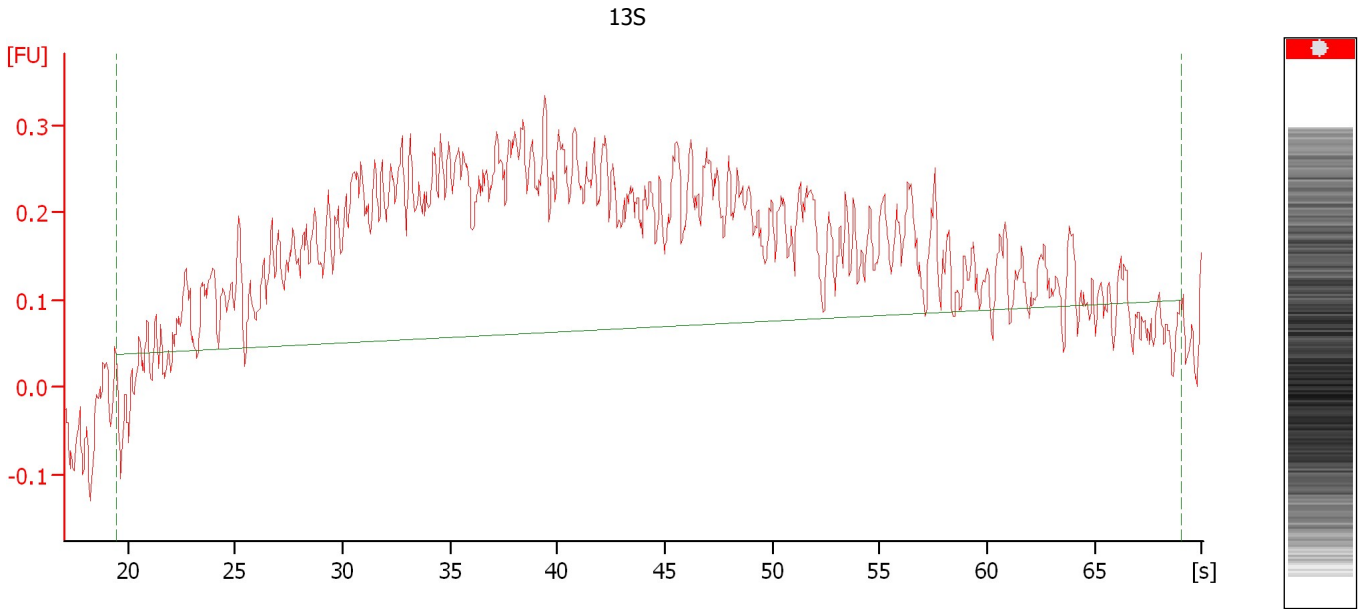
**Overall Results for sample 10 : 717R**

RNA Concentration:	20 ng/μl	Result Flagging Color:	<input type="checkbox"/>
rRNA Ratio [25s / 18s]:	0.0	Result Flagging Label:	RIN N/A

Assay Class: Plant RNA Nano  
Data Path: C:\...ents and Settings\Bioanalyzer\2012-06-25\2012-06-25\_002.xad

Created: 6/25/2012 10:46:51 AM  
Modified: 6/25/2012 11:10:35 AM

**Electropherogram Summary Continued ...**



**Overall Results for sample 11 : 13S**

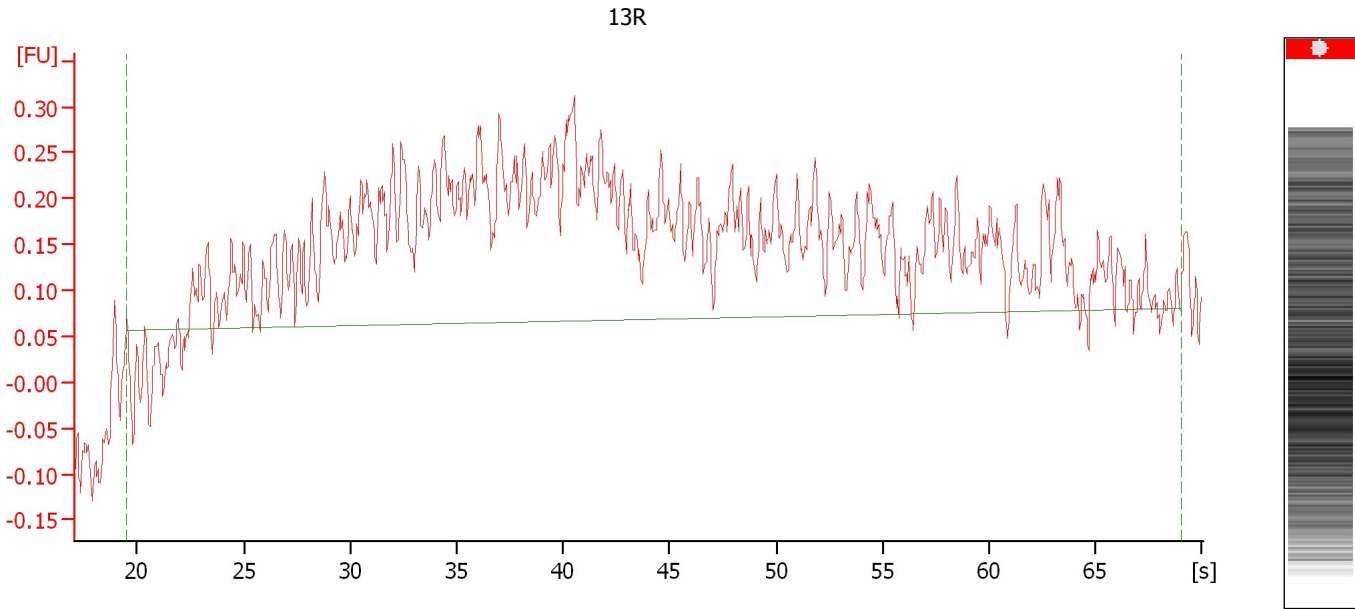
RNA Concentration: 34 ng/ $\mu$ l  
rRNA Ratio [25s / 18s]: 0.0

Result Flagging Color:   
Result Flagging Label: RIN N/A

Assay Class: Plant RNA Nano  
Data Path: C:\...ents and Settings\Bioanalyzer\2012-06-25\2012-06-25\_002.xad

Created: 6/25/2012 10:46:51 AM  
Modified: 6/25/2012 11:10:35 AM

**Electropherogram Summary Continued ...**



**Overall Results for sample 12 : 13R**

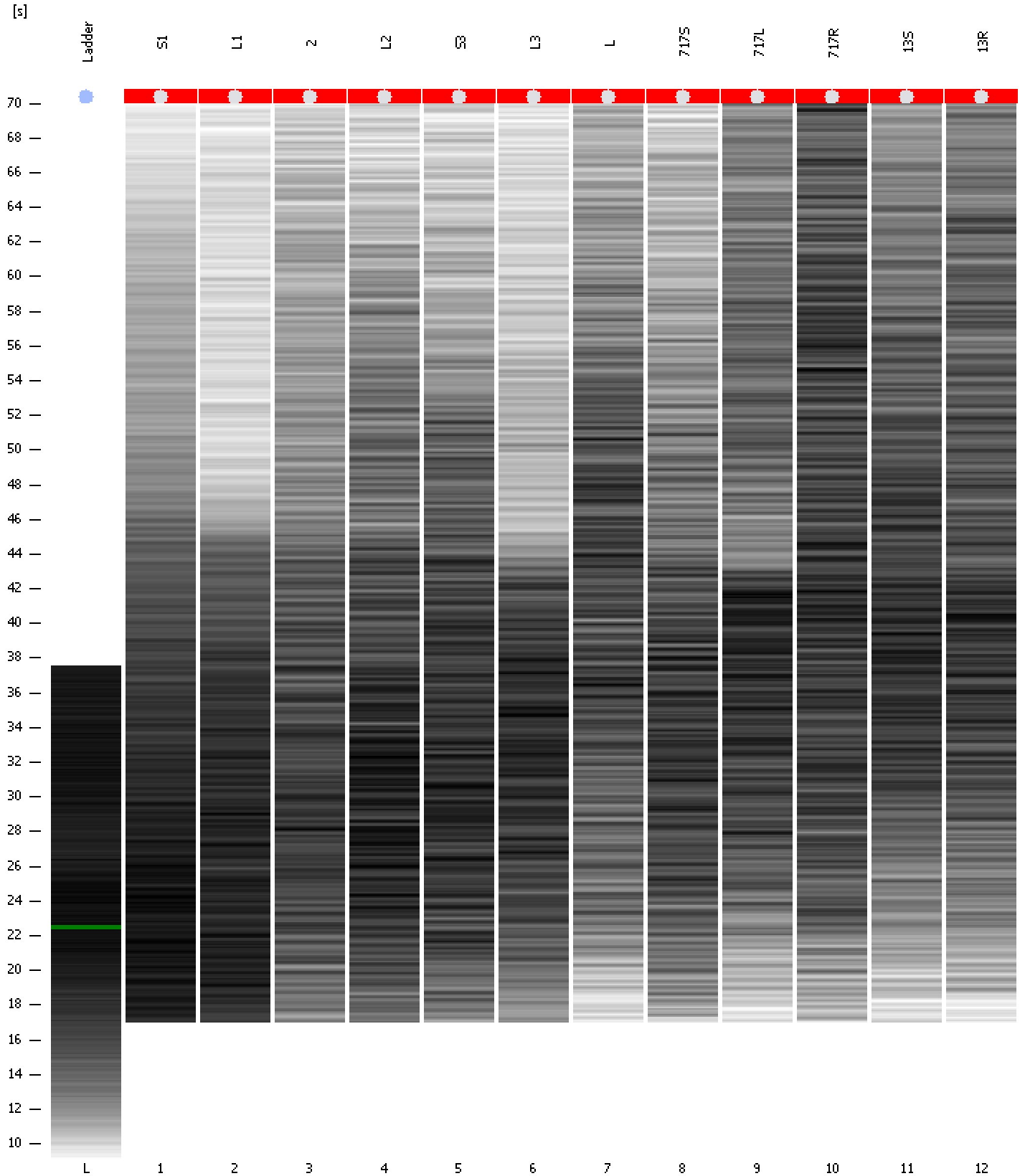
RNA Concentration: 28 ng/ $\mu$ l  
rRNA Ratio [25s / 18s]: 0.0

Result Flagging Color:   
Result Flagging Label: RIN N/A

Assay Class: Plant RNA Nano  
Data Path: C:\...ents and Settings\Bioanalyzer\2012-06-25\2012-06-25\_002.xad

Created: 6/25/2012 10:46:51 AM  
Modified: 6/25/2012 11:10:35 AM

**Gel Image**



Assay Class: Plant RNA Nano  
 Data Path: C:\...ents and Settings\Bioanalyzer\2012-06-25\2012-06-25\_002.xad

Created: 6/25/2012 10:46:51 AM  
 Modified: 6/25/2012 11:10:35 AM

**Run Logbook**

Description	Number	Source	Category	Sub Category	Time	Time Zone	User	Host
Run ended on port 1 (Number of wells acquired: 13)		Instrument	Run		6/25/2012 11:10:33 AM	(GMT --07:00) Pacific Standard Time	UC Davis	D8XSMGH1
Run started on port 1 (File: C:\Documents and Settings\Bioanalyzer\2012-06-25\2012-06-25_002.xad)		Instrument	Run		6/25/2012 10:46:52 AM	(GMT --07:00) Pacific Standard Time	UC Davis	D8XSMGH1
Product Number : G2938B		Instrument	Run		6/25/2012 10:46:52 AM	(GMT --07:00) Pacific Standard Time	UC Davis	D8XSMGH1
Name :		Instrument	Run		6/25/2012 10:46:52 AM	(GMT --07:00) Pacific Standard Time	UC Davis	D8XSMGH1
Vendor : Agilent Technologies		Instrument	Run		6/25/2012 10:46:52 AM	(GMT --07:00) Pacific Standard Time	UC Davis	D8XSMGH1
Serial# : DE13701086		Instrument	Run		6/25/2012 10:46:52 AM	(GMT --07:00) Pacific Standard Time	UC Davis	D8XSMGH1
Firmware : C.01.069		Instrument	Run		6/25/2012 10:46:52 AM	(GMT --07:00) Pacific Standard Time	UC Davis	D8XSMGH1
Cartridge : Electrode		Instrument	Run		6/25/2012 10:46:52 AM	(GMT --07:00) Pacific Standard Time	UC Davis	D8XSMGH1