

Assay Class: Plant RNA Nano
Data Path: C:\...ents and Settings\Bioanalyzer\2012-06-25\2012-06-25_002.xad

Created: 6/25/2012 10:46:51 AM
Modified: 6/25/2012 11:10:35 AM

Electrophoresis Assay Details

General Analysis Settings

Number of Available Sample and Ladder Wells (Max.) : 13
Minimum Visible Range [s] : 17
Maximum Visible Range [s] : 70
Start Analysis Time Range [s] : 19
End Analysis Time Range [s] : 69
Ladder Concentration [ng/μl] : 150
Lower Marker Concentration [ng/μl] : 0
Upper Marker Concentration [ng/μl] : 0
Used Lower Marker for Quantitation
Standard Curve Fit is Logarithmic
Show Data Aligned to Lower Marker

Integrator Settings

Integration Start Time [s] : 19
Integration End Time [s] : 69
Slope Threshold : 0.6
Height Threshold [FU] : 0.2
Area Threshold : 0.1
Width Threshold [s] : 0.2
Baseline Plateau [s] : 6

Filter Settings

Filter Width [s] : 0.5
Polynomial Order : 4

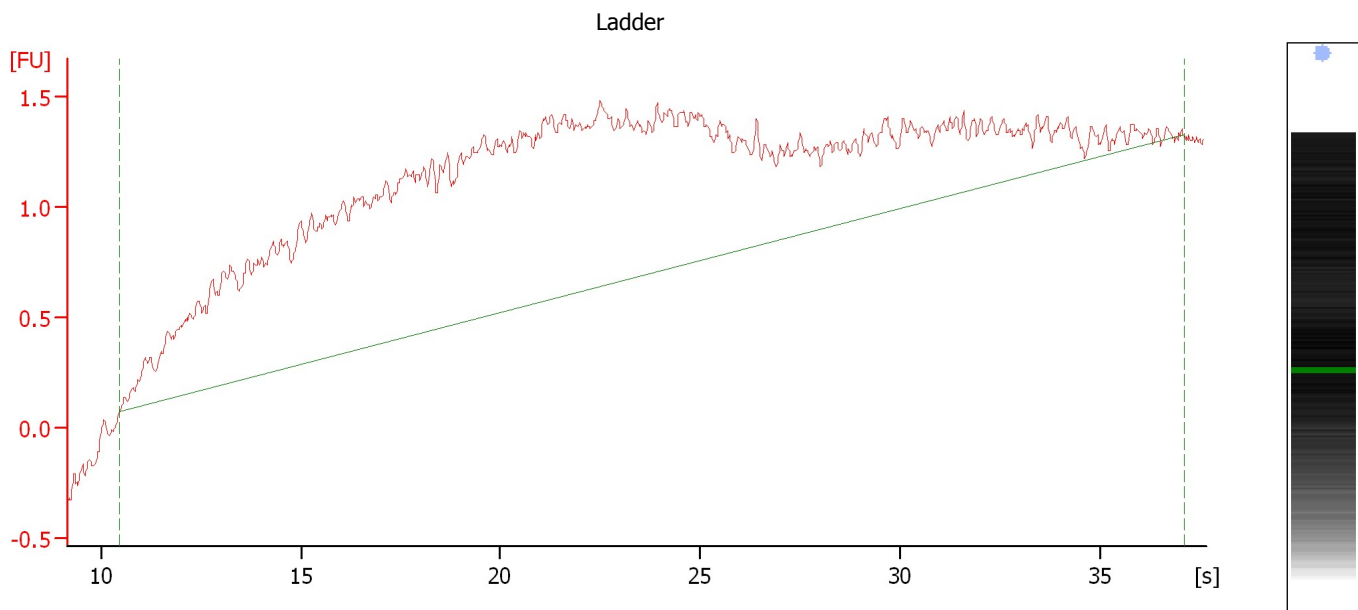
Ladder

Ladder Peak	Size
1	25
2	200
3	500
4	1000
5	2000
6	4000

Assay Class: Plant RNA Nano
Data Path: C:\...ents and Settings\Bioanalyzer\2012-06-25\2012-06-25_002.xad

Created: 6/25/2012 10:46:51 AM
Modified: 6/25/2012 11:10:35 AM

Electropherogram Summary



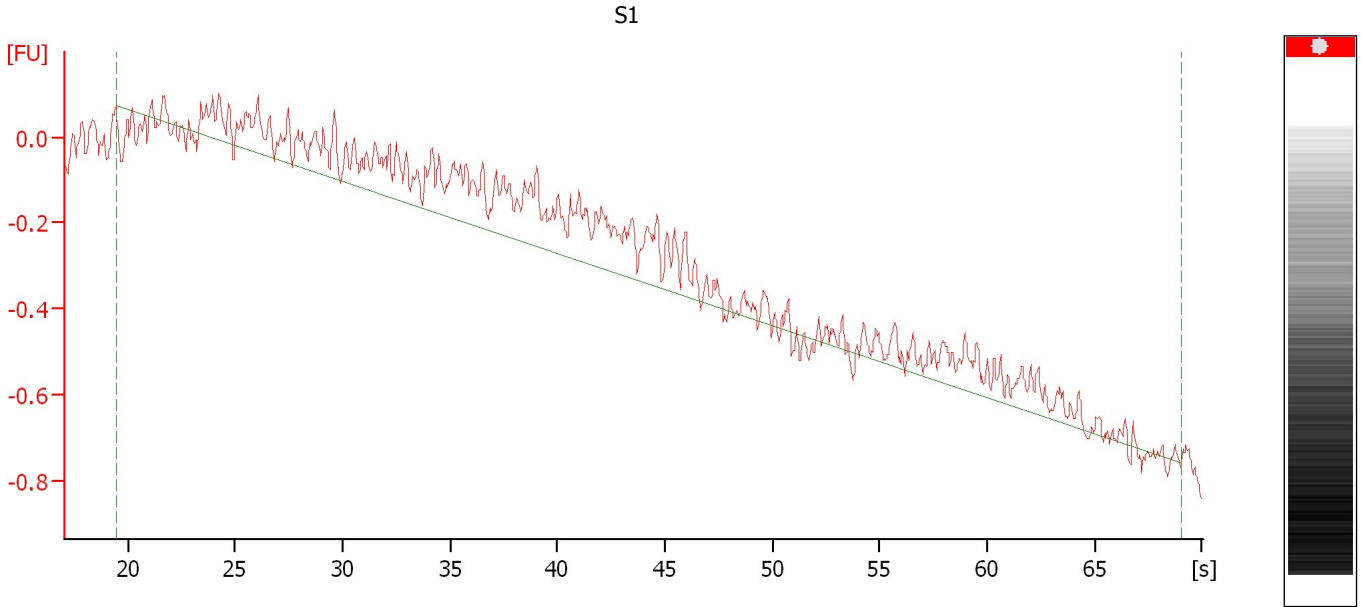
Overall Results for Ladder

RNA Area:	55.9	Result Flagging Color:	
RNA Concentration:	150 ng/ μ l	Result Flagging Label:	All Other Samples

Assay Class: Plant RNA Nano
Data Path: C:\...ents and Settings\Bioanalyzer\2012-06-25\2012-06-25_002.xad

Created: 6/25/2012 10:46:51 AM
Modified: 6/25/2012 11:10:35 AM

Electropherogram Summary Continued ...



Overall Results for sample 1 : S1

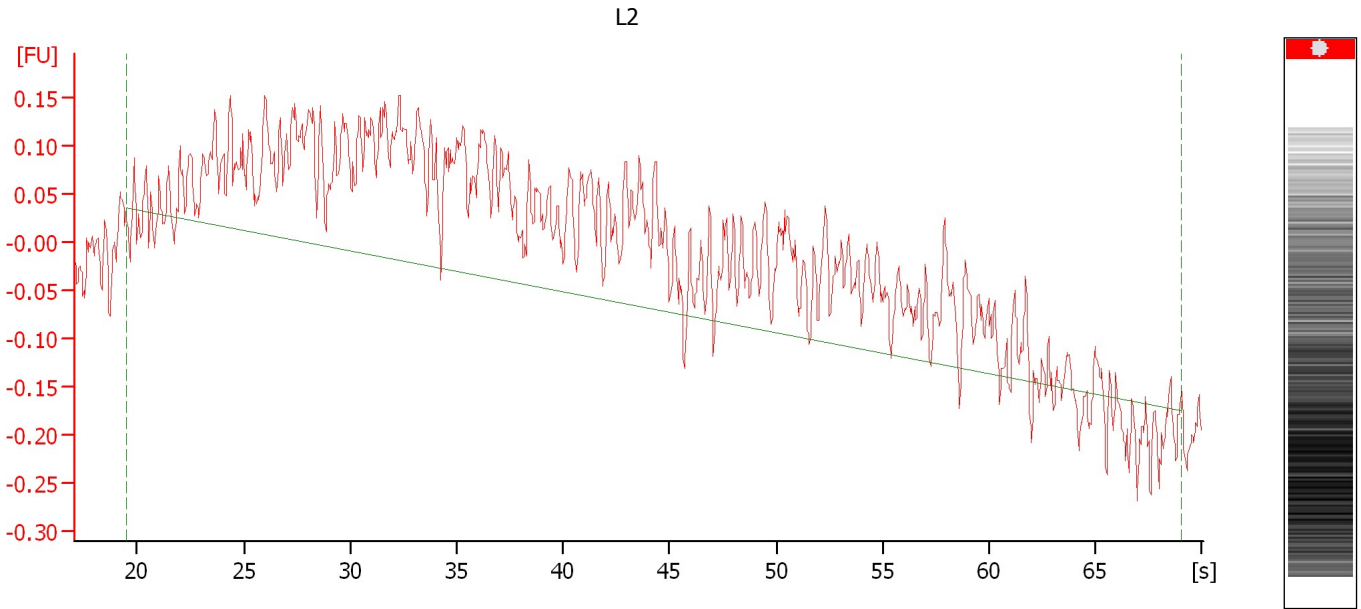
RNA Concentration: 18 ng/ μ l
rRNA Ratio [25s / 18s]: 0.0

Result Flagging Color:
Result Flagging Label: RIN N/A

Assay Class: Plant RNA Nano
Data Path: C:\...ents and Settings\Bioanalyzer\2012-06-25\2012-06-25_002.xad

Created: 6/25/2012 10:46:51 AM
Modified: 6/25/2012 11:10:35 AM

Electropherogram Summary Continued ...



Overall Results for sample 4 : L2

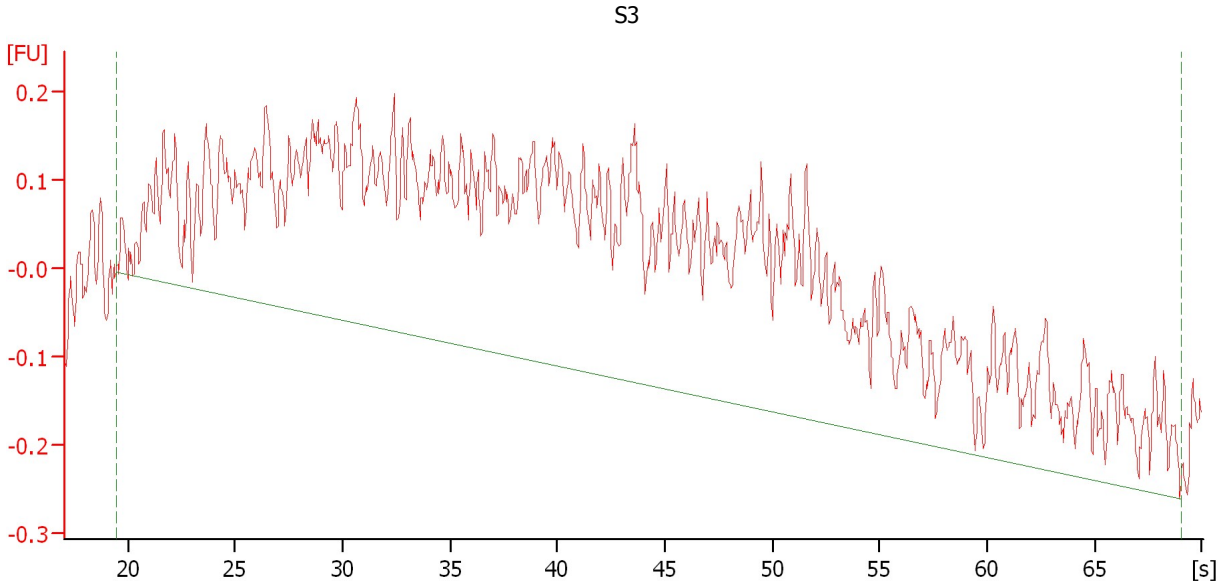
RNA Concentration: 23 ng/ μ l
rRNA Ratio [25s / 18s]: 0.0

Result Flagging Color:
Result Flagging Label: RIN N/A

Assay Class: Plant RNA Nano
Data Path: C:\...ents and Settings\Bioanalyzer\2012-06-25\2012-06-25_002.xad

Created: 6/25/2012 10:46:51 AM
Modified: 6/25/2012 11:10:35 AM

Electropherogram Summary Continued ...



Overall Results for sample 5 : S3

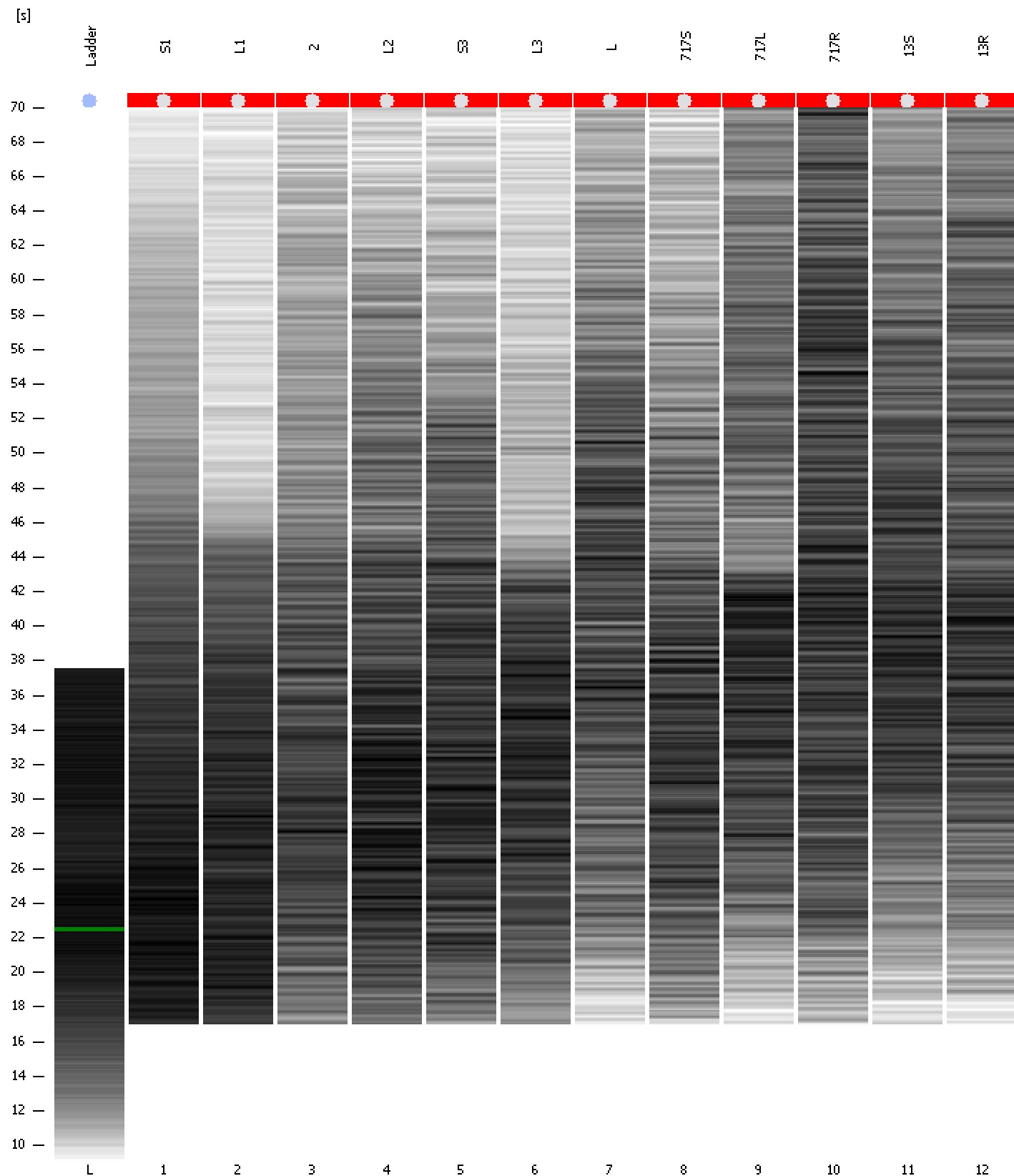
RNA Concentration: 50 ng/μl
rRNA Ratio [25s / 18s]: 0.0

Result Flagging Color:
Result Flagging Label: RIN N/A

Assay Class: Plant RNA Nano
Data Path: C:\...ents and Settings\Bioanalyzer\2012-06-25\2012-06-25_002.xad

Created: 6/25/2012 10:46:51 AM
Modified: 6/25/2012 11:10:35 AM

Gel Image



Assay Class: Plant RNA Nano
 Data Path: C:\...ents and Settings\Bioanalyzer\2012-06-25\2012-06-25_002.xad

Created: 6/25/2012 10:46:51 AM
 Modified: 6/25/2012 11:10:35 AM

Run Logbook

Description	Number	Source	Category	Sub Category	Time	Time Zone	User	Host
Run ended on port 1 (Number of wells acquired: 13)		Instrument	Run		6/25/2012 11:10:33 AM	(GMT --07:00) Pacific Standard Time	UC Davis	D8XSMGH1
Run started on port 1 (File: C:\Documents and Settings\Bioanalyzer\2012-06-25\2012-06-25_002.xad)		Instrument	Run		6/25/2012 10:46:52 AM	(GMT --07:00) Pacific Standard Time	UC Davis	D8XSMGH1
Product Number : G2938B		Instrument	Run		6/25/2012 10:46:52 AM	(GMT --07:00) Pacific Standard Time	UC Davis	D8XSMGH1
Name :		Instrument	Run		6/25/2012 10:46:52 AM	(GMT --07:00) Pacific Standard Time	UC Davis	D8XSMGH1
Vendor : Agilent Technologies		Instrument	Run		6/25/2012 10:46:52 AM	(GMT --07:00) Pacific Standard Time	UC Davis	D8XSMGH1
Serial# : DE13701086		Instrument	Run		6/25/2012 10:46:52 AM	(GMT --07:00) Pacific Standard Time	UC Davis	D8XSMGH1
Firmware : C.01.069		Instrument	Run		6/25/2012 10:46:52 AM	(GMT --07:00) Pacific Standard Time	UC Davis	D8XSMGH1
Cartridge : Electrode		Instrument	Run		6/25/2012 10:46:52 AM	(GMT --07:00) Pacific Standard Time	UC Davis	D8XSMGH1