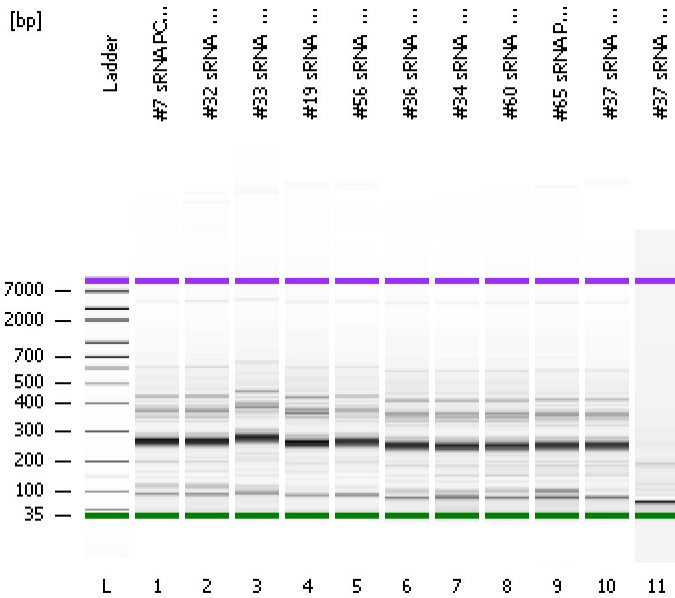


Assay Class: High Sensitivity DNA Assay
Data Path: C:\...ents and Settings\Bioanalyzer\2012-06-25\2012-06-25_003.xad

Created: 6/25/2012 3:08:34 PM
Modified: 6/26/2012 9:40:06 AM

Electrophoresis File Run Summary



Instrument Information:

Instrument Name: DE13701086 Firmware: C.01.069
Serial#: DE13701086 Type: G2938B

Assay Information:

Assay Origin Path: C:\Program Files\Agilent\2100 bioanalyzer\2100 expert\assays\dsDNA\High Sensitivity DNA.xsy
Assay Class: High Sensitivity DNA Assay
Version: 1.03
Assay Comments: Copyright © 2003-2010 Agilent Technologies

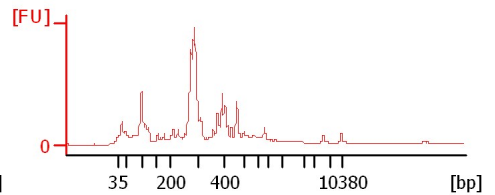
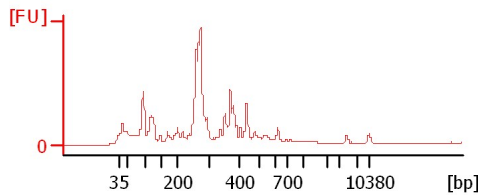
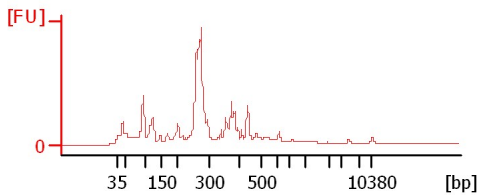
Chip Information:

Chip Lot #:
Reagent Kit Lot #:
Chip Comments:

#7 sRNA PCR (6/25/12) 15 cyc

#32 sRNA PCR (6/25/12) 15 cyc

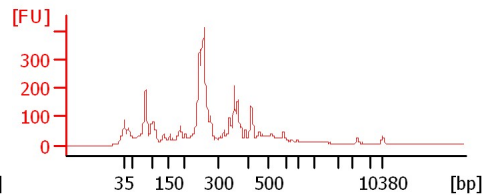
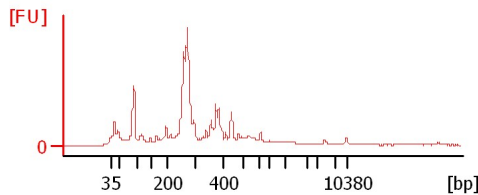
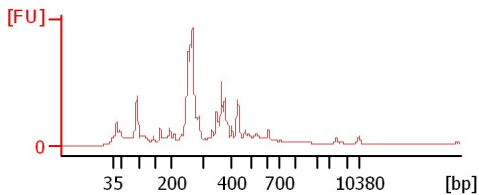
#33 sRNA PCR (6/25/12) 15 cyc



#19 sRNA PCR (6/25/12) 15 cyc

#56 sRNA PCR (6/25/12) 15 cyc

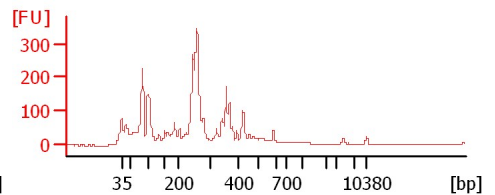
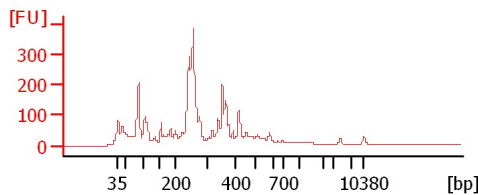
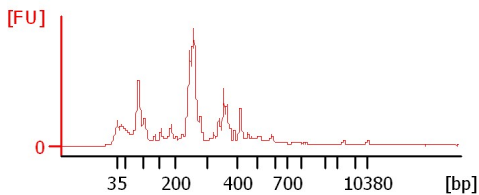
#36 sRNA PCR (6/25/12) 15 cyc



#34 sRNA PCR (6/25/12) 15 cyc

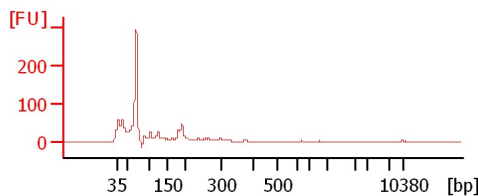
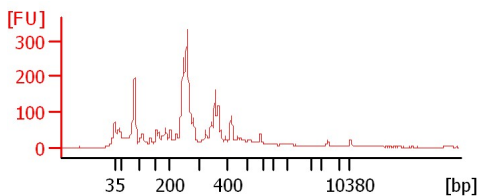
#60 sRNA PCR (6/25/12) 15 cyc

#65 sRNA PCR (6/25/12) 15 cyc



#37 sRNA PCR (6/25/12) 15 cyc

#37 sRNA PCR (6/19/12) 11 cyc



Assay Class: High Sensitivity DNA Assay
Data Path: C:\...ents and Settings\Bioanalyzer\2012-06-25\2012-06-25_003.xad

Created: 6/25/2012 3:08:34 PM
Modified: 6/26/2012 9:40:06 AM

Electrophoresis File Run Summary (Chip Summary)

Sample Name	Sample Comment	Rest. Digest	Status	Observation	Result Label	Result Color
#7 sRNA PCR (6/25/12) 15 cyc		<input type="checkbox"/>	✓			
#32 sRNA PCR (6/25/12) 15 cyc		<input type="checkbox"/>	✓			
#33 sRNA PCR (6/25/12) 15 cyc		<input type="checkbox"/>	✓			
#19 sRNA PCR (6/25/12) 15 cyc		<input type="checkbox"/>	✓			
#56 sRNA PCR (6/25/12) 15 cyc		<input type="checkbox"/>	✓			
#36 sRNA PCR (6/25/12) 15 cyc		<input type="checkbox"/>	✓			
#34 sRNA PCR (6/25/12) 15 cyc		<input type="checkbox"/>	✓			
#60 sRNA PCR (6/25/12) 15 cyc		<input type="checkbox"/>	✓			
#65 sRNA PCR (6/25/12) 15 cyc		<input type="checkbox"/>	✓			
#37 sRNA PCR (6/25/12) 15 cyc		<input type="checkbox"/>	✓			
#37 sRNA PCR (6/19/12) 11 cyc		<input type="checkbox"/>	✓			
Ladder		<input type="checkbox"/>	✓			

Chip Lot #

Reagent Kit Lot #

Chip Comments :

Assay Class: High Sensitivity DNA Assay
Data Path: C:\...ents and Settings\Bioanalyzer\2012-06-25\2012-06-25_003.xad

Created: 6/25/2012 3:08:34 PM
Modified: 6/26/2012 9:40:06 AM

Electrophoresis Assay Details

General Analysis Settings

Number of Available Sample and Ladder Wells (Max.) : 12
Minimum Visible Range [s] : 32
Maximum Visible Range [s] : 138
Start Analysis Time Range [s] : 33
End Analysis Time Range [s] : 137.5
Ladder Concentration [pg/μl] : 1950
Uses Standard Area for Ladder Fragments
Lower Marker Concentration [pg/μl] : 125
Upper Marker Concentration [pg/μl] : 75
Used Upper Marker for Quantitation
Standard Curve Fit is Point to Point
Show Data Aligned to Lower and Upper Marker

Integrator Settings

Integration Start Time [s] : 33.05
Integration End Time [s] : 137
Slope Threshold : 0.8
Height Threshold [FU] : 5
Area Threshold : 0.1
Width Threshold [s] : 0.6
Baseline Plateau [s] : 0.5

Filter Settings

Filter Width [s] : 0.5
Polynomial Order : 4

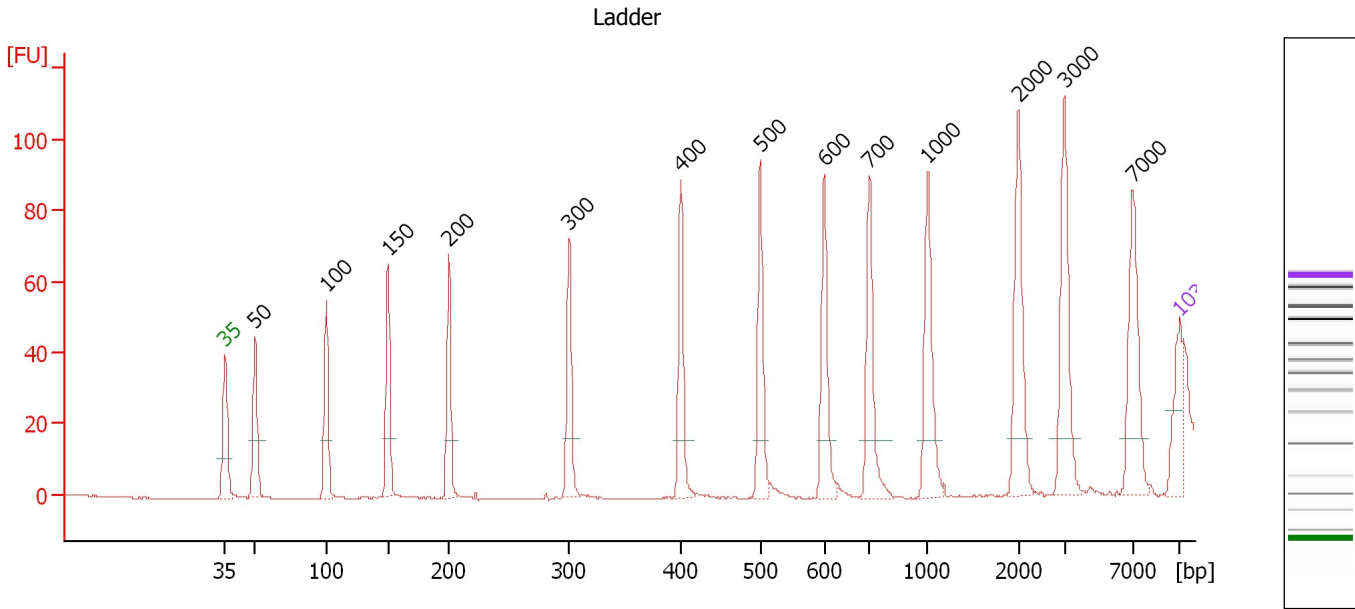
Ladder

Ladder Peak	Size	Area
1	35	160
2	50	210
3	100	208
4	150	221
5	200	242
6	300	270
7	400	305
8	500	306
9	600	336
10	700	321
11	1000	366
12	2000	413
13	3000	411
14	7000	400
15	10380	214

Assay Class: High Sensitivity DNA Assay
 Data Path: C:\...ents and Settings\Bioanalyzer\2012-06-25\2012-06-25_003.xad

Created: 6/25/2012 3:08:34 PM
 Modified: 6/26/2012 9:40:06 AM

Electropherogram Summary



Overall Results for Ladder

Noise: 0.2

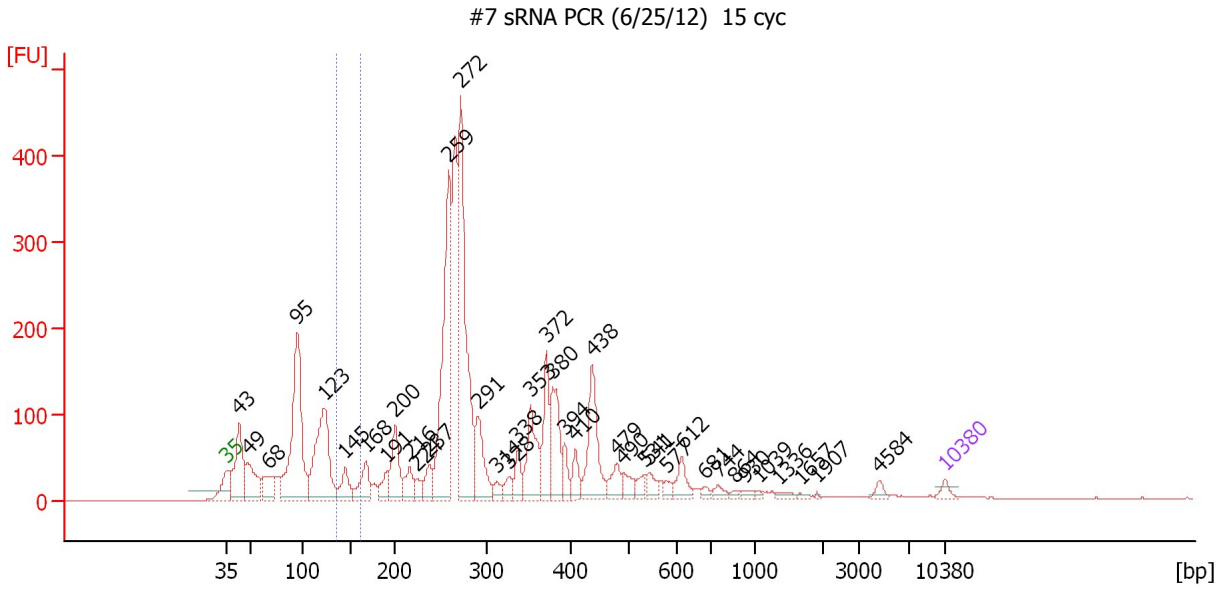
Peak table for Ladder

Peak	Size [bp]	Conc. [pg/μl]	Molarity [pmol/l]	Observations
1	35	125.00	5,411.3	Lower Marker
2	50	150.00	4,545.5	Ladder Peak
3	100	150.00	2,272.7	Ladder Peak
4	150	150.00	1,515.2	Ladder Peak
5	200	150.00	1,136.4	Ladder Peak
6	300	150.00	757.6	Ladder Peak
7	400	150.00	568.2	Ladder Peak
8	500	150.00	454.5	Ladder Peak
9	600	150.00	378.8	Ladder Peak
10	700	150.00	324.7	Ladder Peak
11	1,000	150.00	227.3	Ladder Peak
12	2,000	150.00	113.6	Ladder Peak
13	3,000	150.00	75.8	Ladder Peak
14	7,000	150.00	32.5	Ladder Peak
15	10,380	75.00	10.9	Upper Marker

Assay Class: High Sensitivity DNA Assay
 Data Path: C:\...ents and Settings\Bioanalyzer\2012-06-25\2012-06-25_003.xad

Created: 6/25/2012 3:08:34 PM
 Modified: 6/26/2012 9:40:06 AM

Electropherogram Summary Continued ...



Overall Results for sample 1 : #7 sRNA PCR (6/25/12) 15 cyc

Number of peaks found: 39 Corr. Area 1: 73.5
 Noise: 0.3

Peak table for sample 1 : #7 sRNA PCR (6/25/12) 15 cyc

Peak	Size [bp]	Conc. [pg/μl]	Molarity [pmol/l]	Observations
1	35	125.00	5,411.3	Lower Marker
2	43	1,326.78	46,697.1	
3	49	880.48	27,422.5	
4	68	540.78	12,037.5	
5	95	3,216.06	51,528.8	
6	123	2,300.29	28,335.1	
7	145	445.28	4,641.4	
8	168	555.36	5,007.9	
9	191	292.05	2,312.4	
10	200	788.01	5,984.1	
11	216	359.65	2,522.9	
12	224	164.54	1,111.8	
13	237	337.41	2,155.5	
14	259	3,300.15	19,309.7	
15	272	3,695.13	20,546.9	
16	291	851.90	4,430.8	
17	314	131.61	636.0	
18	328	182.47	844.1	
19	338	296.57	1,330.6	
20	353	953.75	4,094.1	
21	372	778.50	3,170.4	
22	380	896.73	3,578.4	
23	394	267.96	1,029.6	
24	410	268.70	993.3	
25	438	1,107.42	3,834.7	
26	479	299.87	949.3	

Assay Class: High Sensitivity DNA Assay
 Data Path: C:\...ents and Settings\Bioanalyzer\2012-06-25\2012-06-25_003.xad


Created: 6/25/2012 3:08:34 PM
 Modified: 6/26/2012 9:40:06 AM

Electropherogram Summary Continued ...

... Peak table for sample 1 : #7 sRNA PCR (6/25/12) 15 cyc

Peak	Size [bp]	Conc. [pg/µl]	Molarity [pmol/l]	Observations
27	490	224.35	693.4	
28	531	155.94	444.9	
29	541	182.95	512.3	
30	577	109.03	286.5	
31	612	283.08	700.6	
32	681	77.34	172.1	
33	744	100.19	204.2	
34	864	39.81	69.8	
35	930	66.03	107.6	
36	1,039	29.91	43.6	
37	1,336	64.85	73.6	
38	1,657	27.86	25.5	
39	1,907	11.33	9.0	
40	4,584	73.91	24.4	
41	10,380	75.00	10.9	Upper Marker

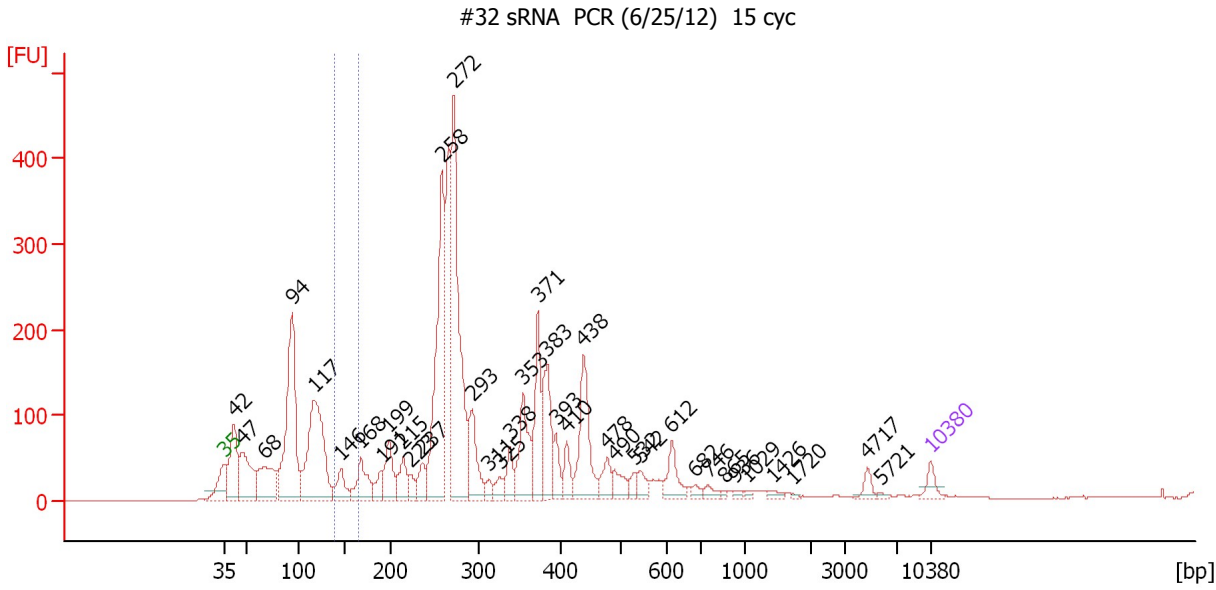
Region table for sample 1 : #7 sRNA PCR (6/25/12) 15 cyc

From [bp]	To [bp]	Average Size [bp]	Molarity [pmol/l]	Conc. [pg/µl]	Corr. Area	% of Total	Size distribution in CV [%]	Color
137	162	148	5,886.2	574.27	73.5	2	4.7	

Assay Class: High Sensitivity DNA Assay
 Data Path: C:\...ents and Settings\Bioanalyzer\2012-06-25\2012-06-25_003.xad

Created: 6/25/2012 3:08:34 PM
 Modified: 6/26/2012 9:40:06 AM

Electropherogram Summary Continued ...



Overall Results for sample 2 : #32 sRNA PCR (6/25/12) 15 cyc

Number of peaks found: 38 Corr. Area 1: 69.5
 Noise: 0.3

Peak table for sample 2 : #32 sRNA PCR (6/25/12) 15 cyc

Peak	Size [bp]	Conc. [pg/μl]	Molarity [pmol/l]	Observations
1	35	125.00	5,411.3	Lower Marker
2	42	715.35	25,961.1	
3	47	649.28	20,739.6	
4	68	626.02	14,021.2	
5	94	1,805.78	29,252.9	
6	117	1,629.49	21,098.3	
7	146	244.25	2,532.8	
8	168	389.54	3,514.2	
9	191	165.41	1,311.9	
10	199	348.60	2,649.8	
11	215	249.76	1,756.4	
12	223	111.60	757.5	
13	237	197.46	1,262.6	
14	258	1,814.53	10,637.2	
15	272	2,079.69	11,576.3	
16	293	456.49	2,364.6	
17	311	79.01	384.6	
18	325	101.49	472.5	
19	338	187.20	839.8	
20	353	547.04	2,346.3	
21	371	561.04	2,289.1	
22	383	538.18	2,129.2	
23	393	176.99	681.8	
24	410	175.90	650.6	
25	438	657.18	2,274.8	
26	478	167.12	530.2	

Assay Class: High Sensitivity DNA Assay
 Data Path: C:\...ents and Settings\Bioanalyzer\2012-06-25\2012-06-25_003.xad

Created: 6/25/2012 3:08:34 PM
 Modified: 6/26/2012 9:40:06 AM

Electropherogram Summary Continued ...

... Peak table for sample 2 : #32 sRNA PCR (6/25/12) 15 cyc

Peak	Size [bp]	Conc. [pg/µl]	Molarity [pmol/l]	Observations
27	490	149.48	462.0	
28	532	76.77	218.7	
29	542	110.18	308.1	
30	612	215.79	534.5	
31	682	48.53	107.9	
32	746	60.51	122.9	
33	865	19.68	34.5	
34	936	26.12	42.3	
35	1,029	20.65	30.4	
36	1,426	33.80	35.9	
37	1,720	10.85	9.6	
38	4,717	65.51	21.0	
39	5,721	12.32	3.3	
40	▶ 10,380	75.00	10.9	Upper Marker

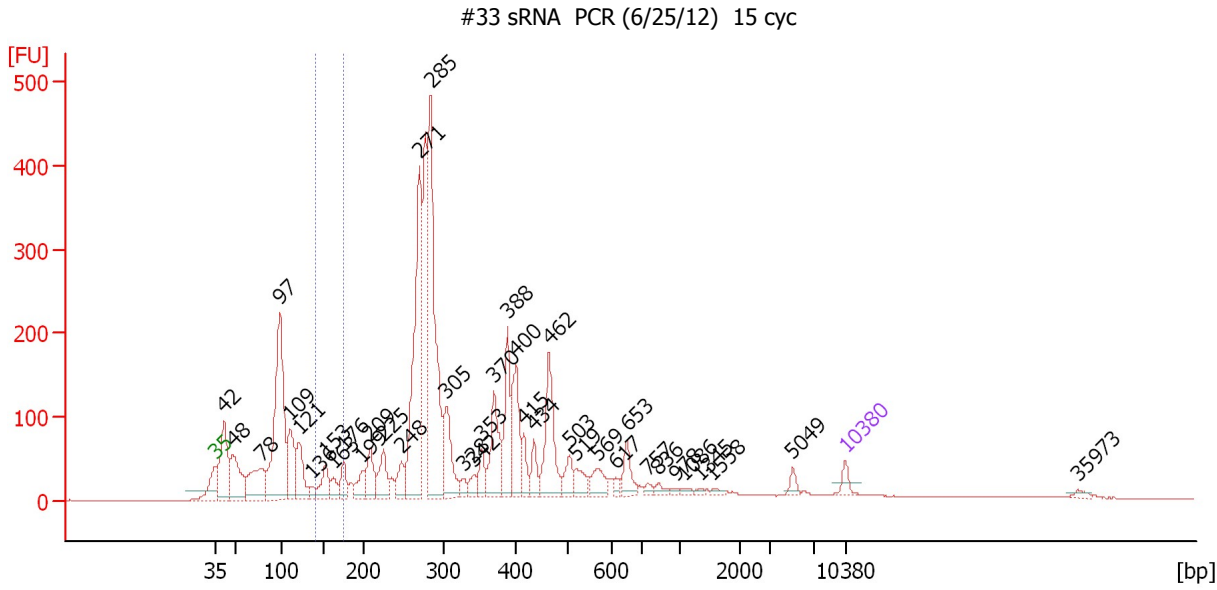
Region table for sample 2 : #32 sRNA PCR (6/25/12) 15 cyc

From [bp]	To [bp]	Average Size [bp]	Molarity [pmol/l]	Conc. [pg/µl]	Corr. Area	% of Total	Size distribution in CV [%]	Color
139	165	150	2,932.0	289.47	69.5	2	5.0	■

Assay Class: High Sensitivity DNA Assay
 Data Path: C:\...ents and Settings\Bioanalyzer\2012-06-25\2012-06-25_003.xad

Created: 6/25/2012 3:08:34 PM
 Modified: 6/26/2012 9:40:06 AM

Electropherogram Summary Continued ...



Overall Results for sample 3 : #33 sRNA PCR (6/25/12) 15 cyc

Number of peaks found: 39 Corr. Area 1: 115.3
 Noise: 0.2

Peak table for sample 3 : #33 sRNA PCR (6/25/12) 15 cyc


Peak	Size [bp]	Conc. [pg/μl]	Molarity [pmol/l]	Observations
1	35	125.00	5,411.3	Lower Marker
2	42	861.30	31,238.8	
3	48	659.29	20,745.4	
4	78	661.61	12,834.9	
5	97	2,146.27	33,367.2	
6	109	563.03	7,791.5	
7	121	481.38	6,048.5	
8	136	90.30	1,004.2	
9	153	278.09	2,748.9	
10	163	142.92	1,326.5	
11	176	215.56	1,857.1	
12	199	201.42	1,532.7	
13	209	329.76	2,388.9	
14	225	324.16	2,180.6	
15	248	220.05	1,344.3	
16	271	2,050.87	11,474.8	
17	285	2,298.02	12,222.5	
18	305	572.03	2,838.2	
19	328	86.72	400.8	
20	342	108.88	481.9	
21	353	185.54	795.9	
22	370	594.70	2,436.2	
23	388	570.04	2,226.1	
24	400	558.59	2,113.6	
25	415	184.36	673.7	
26	434	180.39	629.8	

Assay Class: High Sensitivity DNA Assay
 Data Path: C:\...ents and Settings\Bioanalyzer\2012-06-25\2012-06-25_003.xad


Created: 6/25/2012 3:08:34 PM
 Modified: 6/26/2012 9:40:06 AM

Electropherogram Summary Continued ...

... Peak table for sample 3 : #33 sRNA PCR (6/25/12) 15 cyc

Peak	Size [bp]	Conc. [pg/μl]	Molarity [pmol/l]	Observations
27	462	713.71	2,338.5	
28	503	173.51	523.1	
29	519	165.23	482.4	
30	569	190.86	507.8	
31	617	52.57	129.0	
32	653	202.78	470.5	
33	757	44.13	88.3	
34	836	51.84	93.9	
35	978	24.83	38.5	
36	1,086	26.81	37.4	
37	1,345	20.43	23.0	
38	1,558	23.43	22.8	
39	5,049	55.82	16.8	
40	 10,380	75.00	10.9	Upper Marker
41	35,973	0.00	0.0	

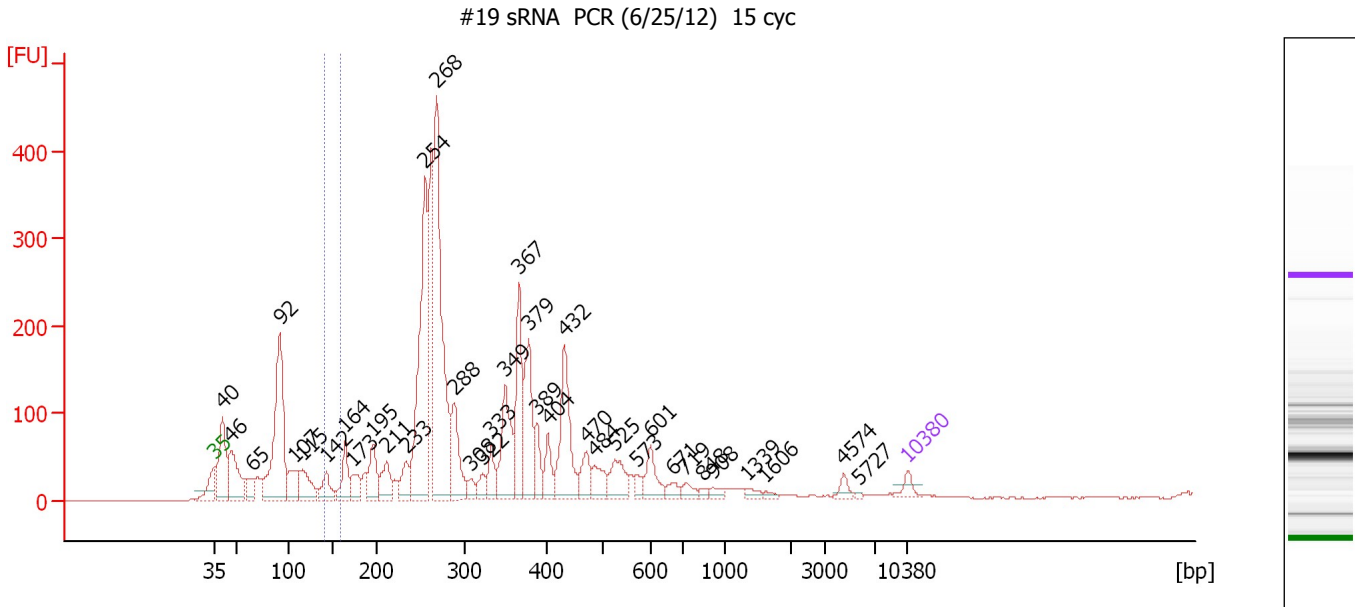
Region table for sample 3 : #33 sRNA PCR (6/25/12) 15 cyc

From [bp]	To [bp]	Average Size [bp]	Molarity [pmol/l]	Conc. [pg/μl]	Corr. Area	% of Total	Size distribution in CV [%]	Color
140	175	158	5,300.1	551.15	115.3	3	6.1	

Assay Class: High Sensitivity DNA Assay
 Data Path: C:\...ents and Settings\Bioanalyzer\2012-06-25\2012-06-25_003.xad

Created: 6/25/2012 3:08:34 PM
 Modified: 6/26/2012 9:40:06 AM

Electropherogram Summary Continued ...



Overall Results for sample 4 : #19 sRNA PCR (6/25/12) 15 cyc

Number of peaks found: 37 Corr. Area 1: 46.7
 Noise: 0.3

Peak table for sample 4 : #19 sRNA PCR (6/25/12) 15 cyc

Peak	Size [bp]	Conc. [pg/μl]	Molarity [pmol/l]	Observations
1	35	125.00	5,411.3	Lower Marker
2	40	916.08	34,326.6	
3	46	749.91	24,576.2	
4	65	224.10	5,198.0	
5	92	1,992.49	32,913.3	
6	107	341.15	4,851.9	
7	115	444.18	5,830.0	
8	142	285.45	3,042.7	
9	164	379.01	3,506.9	
10	173	231.88	2,033.1	
11	195	396.24	3,076.4	
12	211	300.79	2,160.5	
13	233	256.48	1,668.7	
14	254	2,212.30	13,186.0	
15	268	2,604.11	14,743.9	
16	288	627.13	3,302.5	
17	308	102.55	504.8	
18	322	143.54	674.8	
19	333	222.50	1,012.9	
20	349	734.97	3,188.0	
21	367	771.64	3,184.9	
22	379	753.75	3,013.7	
23	389	248.82	969.6	
24	404	239.39	898.4	
25	432	877.18	3,073.8	
26	470	232.57	749.3	

Assay Class: High Sensitivity DNA Assay
 Data Path: C:\...ents and Settings\Bioanalyzer\2012-06-25\2012-06-25_003.xad

Created: 6/25/2012 3:08:34 PM
 Modified: 6/26/2012 9:40:06 AM

Electropherogram Summary Continued ...

... Peak table for sample 4 : #19 sRNA PCR (6/25/12) 15 cyc

Peak	Size [bp]	Conc. [pg/μl]	Molarity [pmol/l]	Observations
27	484	232.36	727.2	
28	525	309.36	892.7	
29	573	69.02	182.4	
30	601	251.53	634.0	
31	671	91.76	207.3	
32	719	88.25	186.0	
33	848	35.90	64.2	
34	908	60.40	100.8	
35	1,339	48.60	55.0	
36	1,606	27.75	26.2	
37	4,574	65.70	21.8	
38	5,727	13.68	3.6	
39	▶ 10,380	75.00	10.9	Upper Marker

Region table for sample 4 : #19 sRNA PCR (6/25/12) 15 cyc

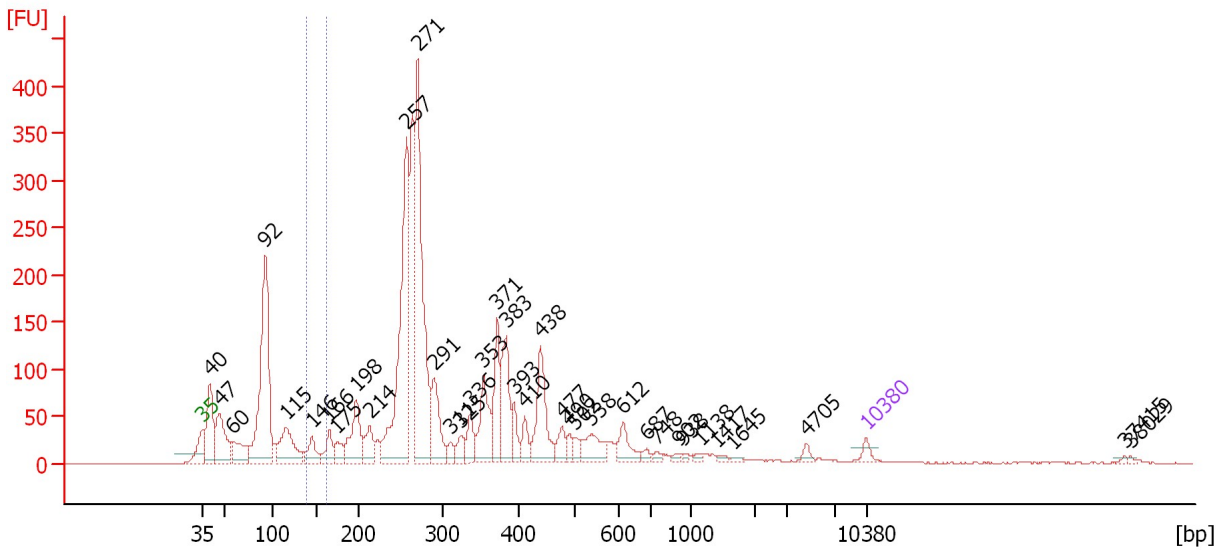
From [bp]	To [bp]	Average Size [bp]	Molarity [pmol/l]	Conc. [pg/μl]	Corr. Area	% of Total	Size distribution in CV [%]	Color
139	159	146	2,494.7	240.58	46.7	1	4.0	■

Assay Class: High Sensitivity DNA Assay
 Data Path: C:\...ents and Settings\Bioanalyzer\2012-06-25\2012-06-25_003.xad

Created: 6/25/2012 3:08:34 PM
 Modified: 6/26/2012 9:40:06 AM

Electropherogram Summary Continued ...

#56 sRNA PCR (6/25/12) 15 cyc



Overall Results for sample 5 : #56 sRNA PCR (6/25/12) 15 cyc

Number of peaks found: 37 Corr. Area 1: 56.7
 Noise: 0.3

Peak table for sample 5 : #56 sRNA PCR (6/25/12) 15 cyc

Peak	Size [bp]	Conc. [pg/μl]	Molarity [pmol/l]	Observations
1	35	125.00	5,411.3	Lower Marker
2	40	1,107.54	41,643.0	
3	47	974.35	31,338.9	
4	60	528.25	13,357.3	
5	92	3,189.35	52,325.6	
6	115	866.30	11,374.1	
7	146	348.71	3,624.7	
8	166	332.46	3,036.9	
9	175	250.75	2,166.9	
10	198	776.43	5,940.5	
11	214	372.37	2,637.5	
12	257	3,395.44	20,004.1	
13	271	3,373.15	18,847.1	
14	291	769.99	4,010.6	
15	311	134.97	658.0	
16	325	203.77	951.3	
17	336	297.99	1,342.8	
18	353	748.95	3,210.6	
19	371	723.70	2,958.4	
20	383	819.76	3,242.8	
21	393	271.49	1,047.6	
22	410	229.27	847.3	
23	438	880.77	3,047.2	
24	477	227.18	722.3	
25	490	124.55	385.1	
26	502	110.49	333.5	

Assay Class: High Sensitivity DNA Assay
 Data Path: C:\...ents and Settings\Bioanalyzer\2012-06-25\2012-06-25_003.xad


Created: 6/25/2012 3:08:34 PM
 Modified: 6/26/2012 9:40:06 AM

Electropherogram Summary Continued ...

... Peak table for sample 5 : #56 sRNA PCR (6/25/12) 15 cyc

Peak	Size [bp]	Conc. [pg/μl]	Molarity [pmol/l]	Observations
27	538	378.88	1,067.1	
28	612	290.95	720.1	
29	687	70.39	155.3	
30	748	51.78	104.9	
31	902	42.58	71.5	
32	938	27.42	44.3	
33	1,138	37.77	50.3	
34	1,417	34.34	36.7	
35	1,645	25.87	23.8	
36	4,705	62.43	20.1	
37	10,380	75.00	10.9	Upper Marker
38	37,415	0.00	0.0	
39	38,029	0.00	0.0	

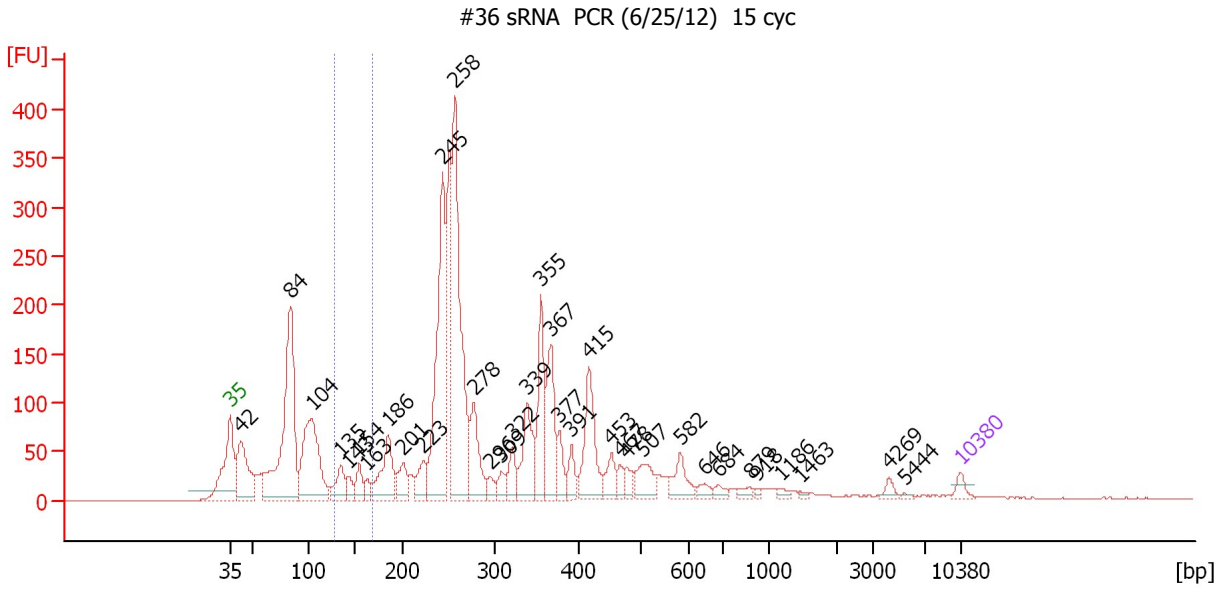
Region table for sample 5 : #56 sRNA PCR (6/25/12) 15 cyc

From [bp]	To [bp]	Average Size [bp]	Molarity [pmol/l]	Conc. [pg/μl]	Corr. Area	% of Total	Size distribution in CV [%]	Color
138	164	149	4,398.4	431.58	56.7	1	4.8	

Assay Class: High Sensitivity DNA Assay
 Data Path: C:\...ents and Settings\Bioanalyzer\2012-06-25\2012-06-25_003.xad

Created: 6/25/2012 3:08:34 PM
 Modified: 6/26/2012 9:40:06 AM

Electropherogram Summary Continued ...



Overall Results for sample 6 : #36 sRNA PCR (6/25/12) 15 cyc

Number of peaks found: 35 Corr. Area 1: 138.6
 Noise: 0.2

Peak table for sample 6 : #36 sRNA PCR (6/25/12) 15 cyc

Peak	Size [bp]	Conc. [pg/μl]	Molarity [pmol/l]	Observations
1	35	125.00	5,411.3	Lower Marker
2	42	1,084.55	39,240.5	
3	84	3,161.13	56,967.2	
4	104	1,872.54	27,210.0	
5	135	395.36	4,447.7	
6	143	188.75	1,998.1	
7	154	258.77	2,538.2	
8	163	144.08	1,338.7	
9	186	780.99	6,362.4	
10	201	336.08	2,527.4	
11	223	326.45	2,213.6	
12	245	2,623.48	16,235.5	
13	258	3,084.84	18,107.2	
14	278	732.49	3,987.0	
15	296	127.75	653.3	
16	309	168.18	824.4	
17	322	288.26	1,358.0	
18	339	717.86	3,207.3	
19	355	841.53	3,587.9	
20	367	847.45	3,496.3	
21	377	272.60	1,096.6	
22	391	227.54	881.7	
23	415	883.24	3,221.2	
24	453	259.07	866.2	
25	467	131.06	425.1	
26	478	145.06	460.1	

Assay Class: High Sensitivity DNA Assay
 Data Path: C:\...ents and Settings\Bioanalyzer\2012-06-25\2012-06-25_003.xad


Created: 6/25/2012 3:08:34 PM
 Modified: 6/26/2012 9:40:06 AM

Electropherogram Summary Continued ...

... Peak table for sample 6 : #36 sRNA PCR (6/25/12) 15 cyc

Peak	Size [bp]	Conc. [pg/µl]	Molarity [pmol/l]	Observations
27	507	357.70	1,068.6	
28	582	297.47	774.0	
29	646	98.67	231.5	
30	684	83.68	185.3	
31	879	79.48	137.1	
32	918	30.63	50.5	
33	1,186	48.02	61.3	
34	1,463	22.37	23.2	
35	4,269	67.36	23.9	
36	5,444	18.44	5.1	
37	10,380	75.00	10.9	Upper Marker

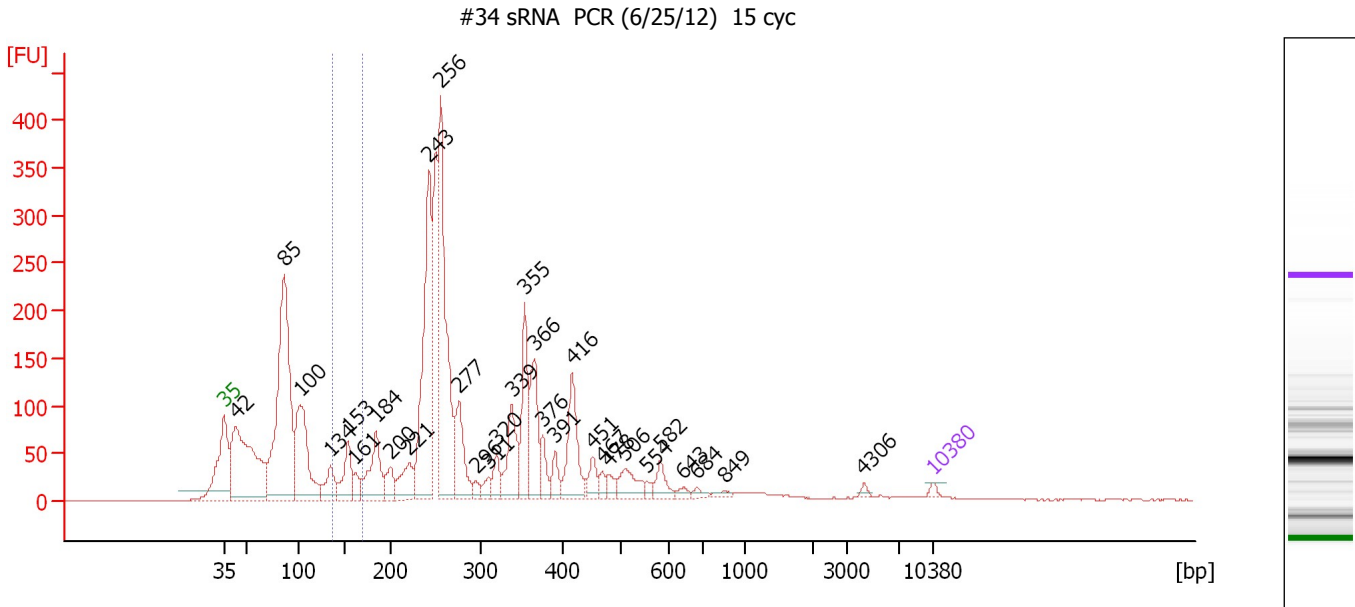
Region table for sample 6 : #36 sRNA PCR (6/25/12) 15 cyc

From [bp]	To [bp]	Average Size [bp]	Molarity [pmol/l]	Conc. [pg/µl]	Corr. Area	% of Total	Size distribution in CV [%]	Color
129	169	147	9,270.7	896.48	138.6	3	7.7	

Assay Class: High Sensitivity DNA Assay
 Data Path: C:\...ents and Settings\Bioanalyzer\2012-06-25\2012-06-25_003.xad

Created: 6/25/2012 3:08:34 PM
 Modified: 6/26/2012 9:40:06 AM

Electropherogram Summary Continued ...



Overall Results for sample 7 : #34 sRNA PCR (6/25/12) 15 cyc

Number of peaks found: 31 Corr. Area 1: 139.8
 Noise: 0.2

Peak table for sample 7 : #34 sRNA PCR (6/25/12) 15 cyc

Peak	Size [bp]	Conc. [pg/μl]	Molarity [pmol/l]	Observations
1	35	125.00	5,411.3	Lower Marker
2	42	5,785.37	206,500.5	
3	85	8,429.59	149,688.0	
4	100	3,486.47	52,813.2	
5	134	820.32	9,254.7	
6	153	1,144.00	11,333.1	
7	161	361.42	3,396.6	
8	184	1,683.48	13,841.9	
9	200	587.67	4,459.9	
10	221	925.17	6,339.6	
11	243	5,401.57	33,654.6	
12	256	6,115.25	36,150.7	
13	277	1,558.73	8,539.0	
14	296	203.30	1,041.8	
15	311	271.54	1,323.8	
16	320	476.24	2,256.2	
17	339	1,376.21	6,159.6	
18	355	1,698.66	7,257.2	
19	366	1,572.38	6,504.7	
20	376	502.07	2,023.6	
21	391	409.53	1,587.9	
22	416	1,625.85	5,921.8	
23	451	432.03	1,450.6	
24	467	208.20	676.0	
25	478	260.63	827.0	
26	506	659.63	1,976.1	

Assay Class: High Sensitivity DNA Assay
 Data Path: C:\...ents and Settings\Bioanalyzer\2012-06-25\2012-06-25_003.xad


Created: 6/25/2012 3:08:34 PM
 Modified: 6/26/2012 9:40:06 AM

Electropherogram Summary Continued ...

... Peak table for sample 7 : #34 sRNA PCR (6/25/12) 15 cyc

Peak	Size [bp]	Conc. [pg/μl]	Molarity [pmol/l]	Observations
27	554	138.36	378.3	
28	582	412.24	1,072.9	
29	643	127.70	300.9	
30	684	119.11	263.8	
31	849	108.44	193.6	
32	4,306	66.26	23.3	
33	▶ 10,380	75.00	10.9	Upper Marker

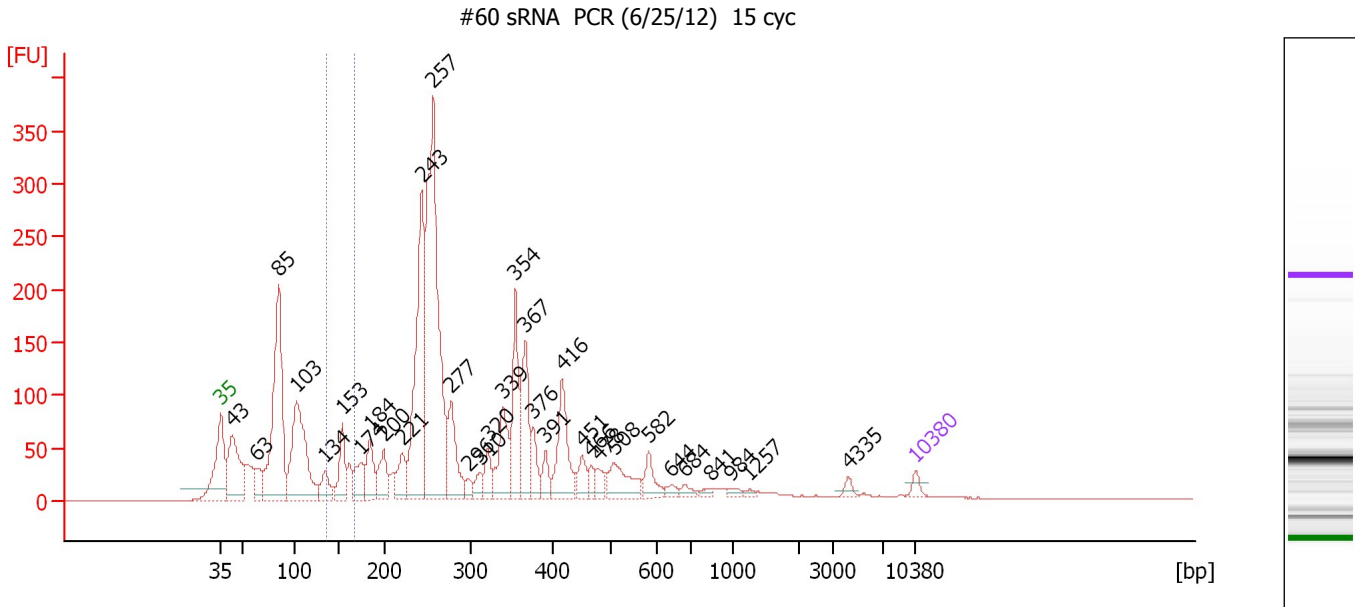
Region table for sample 7 : #34 sRNA PCR (6/25/12) 15 cyc

From [bp]	To [bp]	Average Size [bp]	Molarity [pmol/l]	Conc. [pg/μl]	Corr. Area	% of Total	Size distribution in CV [%]	Color
137	169	153	18,082.8	1,818.02	139.8	3	5.5	

Assay Class: High Sensitivity DNA Assay
 Data Path: C:\...ents and Settings\Bioanalyzer\2012-06-25\2012-06-25_003.xad

Created: 6/25/2012 3:08:34 PM
 Modified: 6/26/2012 9:40:06 AM

Electropherogram Summary Continued ...



Overall Results for sample 8 : #60 sRNA PCR (6/25/12) 15 cyc

Number of peaks found: 33 Corr. Area 1: 132.4
 Noise: 0.2

Peak table for sample 8 : #60 sRNA PCR (6/25/12) 15 cyc

Peak	Size [bp]	Conc. [pg/μl]	Molarity [pmol/l]	Observations
1	35	125.00	5,411.3	Lower Marker
2	43	1,385.82	48,890.7	
3	63	330.33	7,991.3	
4	85	3,048.24	54,450.4	
5	103	2,128.64	31,399.9	
6	134	337.73	3,816.6	
7	153	578.94	5,731.0	
8	174	422.03	3,672.1	
9	184	522.51	4,294.0	
10	200	457.36	3,464.5	
11	221	419.40	2,871.8	
12	243	2,626.60	16,367.6	
13	257	4,542.74	26,833.2	
14	277	795.54	4,349.0	
15	296	119.59	612.2	
16	310	174.67	853.4	
17	320	276.67	1,310.2	
18	339	721.15	3,223.0	
19	354	942.87	4,034.3	
20	367	858.99	3,550.2	
21	376	303.09	1,222.0	
22	391	219.63	851.3	
23	416	848.39	3,091.5	
24	451	236.51	794.9	
25	466	133.27	432.9	
26	478	155.49	492.4	

Assay Class: High Sensitivity DNA Assay
 Data Path: C:\...ents and Settings\Bioanalyzer\2012-06-25\2012-06-25_003.xad


Created: 6/25/2012 3:08:34 PM
 Modified: 6/26/2012 9:40:06 AM

Electropherogram Summary Continued ...

... Peak table for sample 8 : #60 sRNA PCR (6/25/12) 15 cyc

Peak	Size [bp]	Conc. [pg/μl]	Molarity [pmol/l]	Observations
27	508	499.50	1,491.1	
28	582	257.73	671.1	
29	644	81.93	192.8	
30	684	84.15	186.3	
31	841	56.42	101.7	
32	984	53.49	82.3	
33	1,257	34.03	41.0	
34	4,335	58.50	20.4	
35	10,380	75.00	10.9	Upper Marker

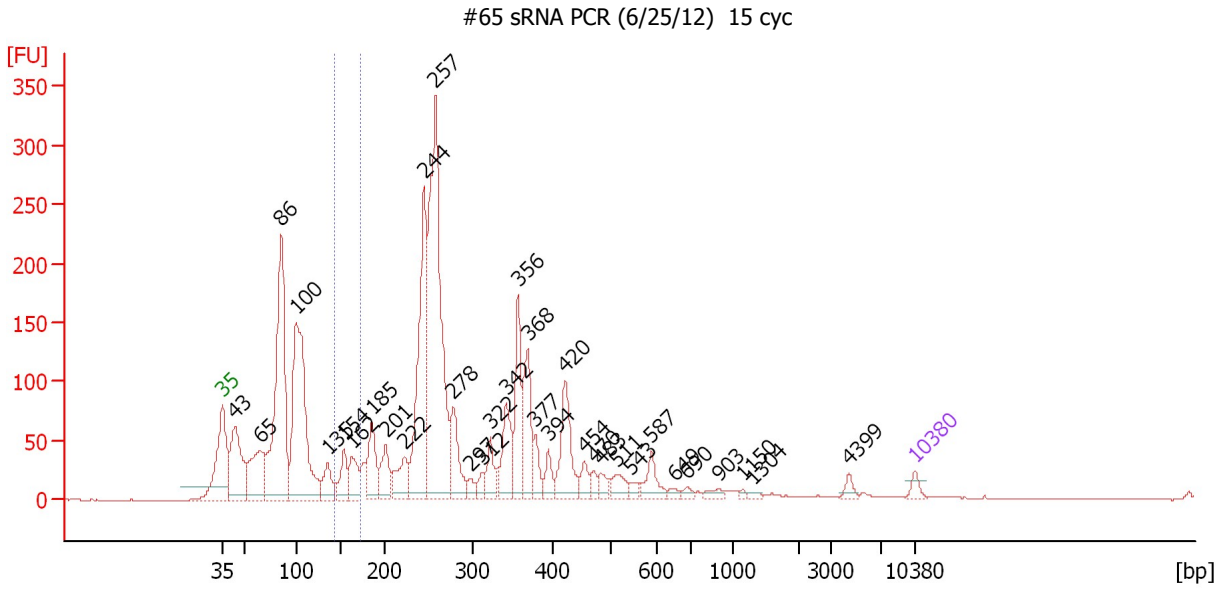
Region table for sample 8 : #60 sRNA PCR (6/25/12) 15 cyc

From [bp]	To [bp]	Average Size [bp]	Molarity [pmol/l]	Conc. [pg/μl]	Corr. Area	% of Total	Size distribution in CV [%]	Color
137	167	153	9,708.1	981.40	132.4	3	5.2	

Assay Class: High Sensitivity DNA Assay
 Data Path: C:\...ents and Settings\Bioanalyzer\2012-06-25\2012-06-25_003.xad

Created: 6/25/2012 3:08:34 PM
 Modified: 6/26/2012 9:40:06 AM

Electropherogram Summary Continued ...



Overall Results for sample 9 : #65 sRNA PCR (6/25/12) 15 cyc

Number of peaks found: 34 Corr. Area 1: 111.5
 Noise: 0.3

Peak table for sample 9 : #65 sRNA PCR (6/25/12) 15 cyc

Peak	Size [bp]	Conc. [pg/μl]	Molarity [pmol/l]	Observations
1	35	125.00	5,411.3	Lower Marker
2	43	1,401.14	48,982.8	
3	65	1,098.46	25,670.5	
4	86	3,778.36	66,913.0	
5	100	3,541.10	53,615.5	
6	135	414.26	4,645.4	
7	154	420.83	4,151.5	
8	162	458.63	4,288.2	
9	185	661.02	5,413.3	
10	201	495.39	3,739.2	
11	222	523.84	3,574.0	
12	244	2,622.89	16,285.4	
13	257	4,479.69	26,364.9	
14	278	729.57	3,973.9	
15	297	121.56	620.0	
16	312	152.93	742.7	
17	322	326.56	1,537.1	
18	342	656.13	2,909.6	
19	356	877.80	3,734.2	
20	368	847.01	3,486.9	
21	377	263.64	1,058.8	
22	394	222.76	857.2	
23	420	838.15	3,024.3	
24	454	189.08	630.8	
25	470	120.93	390.0	
26	483	148.28	465.4	

Assay Class: High Sensitivity DNA Assay
 Data Path: C:\...ents and Settings\Bioanalyzer\2012-06-25\2012-06-25_003.xad


Created: 6/25/2012 3:08:34 PM
 Modified: 6/26/2012 9:40:06 AM

Electropherogram Summary Continued ...

... Peak table for sample 9 : #65 sRNA PCR (6/25/12) 15 cyc

Peak	Size [bp]	Conc. [pg/μl]	Molarity [pmol/l]	Observations
27	511	231.30	686.1	
28	543	92.65	258.6	
29	587	287.19	741.8	
30	649	64.29	150.0	
31	690	64.91	142.6	
32	903	79.41	133.2	
33	1,150	23.65	31.2	
34	1,304	36.81	42.8	
35	4,399	75.90	26.1	
36	▶ 10,380	75.00	10.9	Upper Marker

Region table for sample 9 : #65 sRNA PCR (6/25/12) 15 cyc

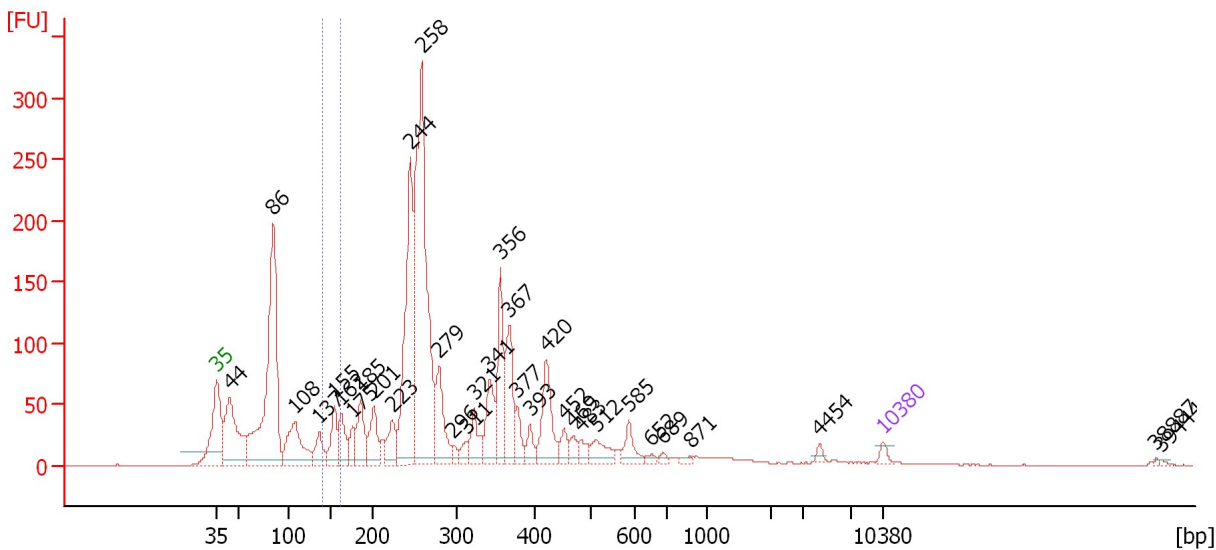
From [bp]	To [bp]	Average Size [bp]	Molarity [pmol/l]	Conc. [pg/μl]	Corr. Area	% of Total	Size distribution in CV [%]	Color
143	172	159	8,690.5	908.10	111.5	3	4.8	

Assay Class: High Sensitivity DNA Assay
 Data Path: C:\...ents and Settings\Bioanalyzer\2012-06-25\2012-06-25_003.xad

Created: 6/25/2012 3:08:34 PM
 Modified: 6/26/2012 9:40:06 AM

Electropherogram Summary Continued ...

#37 sRNA PCR (6/25/12) 15 cyc



Overall Results for sample 10 : #37 sRNA PCR (6/25/12) 15 cyc

Number of peaks found: 33 Corr. Area 1: 82.3
 Noise: 0.2

Peak table for sample 10 : #37 sRNA PCR (6/25/12) 15 cyc

Peak	Size [bp]	Conc. [pg/μl]	Molarity [pmol/l]	Observations
1	35	125.00	5,411.3	Lower Marker
2	44	2,155.78	74,148.2	
3	86	5,516.58	97,552.2	
4	108	1,396.03	19,532.2	
5	137	480.58	5,326.3	
6	155	686.57	6,724.2	
7	162	589.54	5,505.4	
8	175	382.76	3,305.5	
9	185	792.98	6,498.9	
10	201	707.14	5,324.4	
11	223	524.18	3,564.8	
12	244	3,478.30	21,568.0	
13	258	6,232.24	36,647.2	
14	279	1,106.00	6,015.1	
15	296	132.98	681.3	
16	311	201.23	979.9	
17	321	538.32	2,537.6	
18	341	826.08	3,667.2	
19	356	1,188.79	5,063.7	
20	367	1,100.08	4,537.1	
21	377	341.47	1,372.5	
22	393	258.08	993.9	
23	420	1,034.54	3,735.4	
24	452	256.75	860.0	
25	469	183.92	594.6	
26	483	192.30	603.1	

Assay Class: High Sensitivity DNA Assay
 Data Path: C:\...ents and Settings\Bioanalyzer\2012-06-25\2012-06-25_003.xad

Created: 6/25/2012 3:08:34 PM
 Modified: 6/26/2012 9:40:06 AM

Electropherogram Summary Continued ...

... Peak table for sample 10 : #37 sRNA PCR (6/25/12) 15 cyc

Peak	Size [bp]	Conc. [pg/µl]	Molarity [pmol/l]	Observations
27	512	374.63	1,107.6	
28	585	341.02	882.8	
29	652	68.62	159.5	
30	689	70.12	154.2	
31	871	51.15	89.0	
32	4,454	68.04	23.1	
33	10,380	75.00	10.9	Upper Marker
34	38,887	0.00	0.0	
35	39,444	0.00	0.0	

Region table for sample 10 : #37 sRNA PCR (6/25/12) 15 cyc

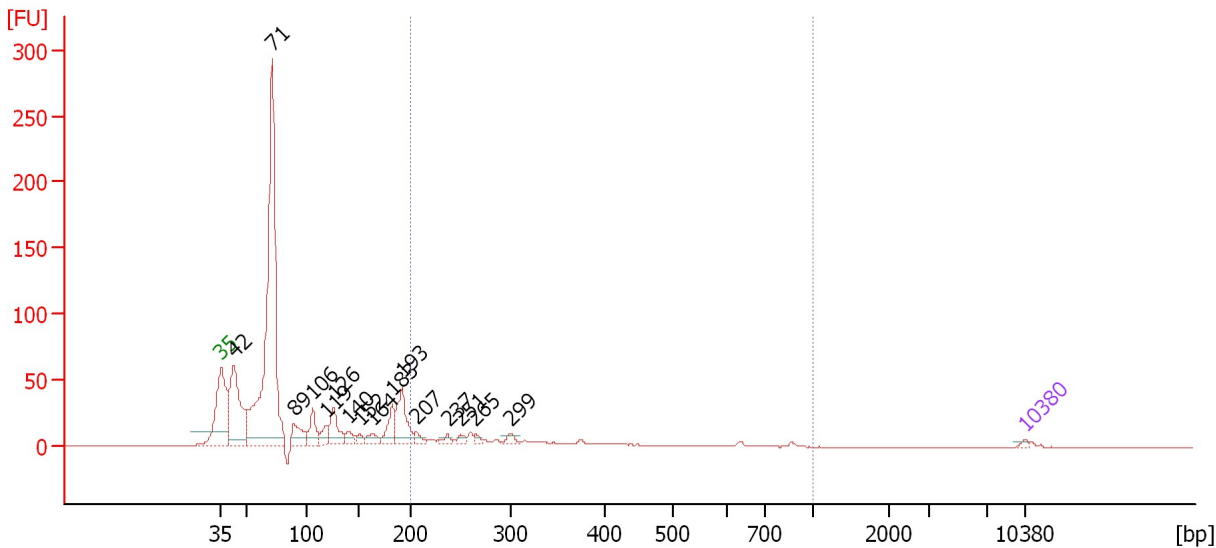
From [bp]	To [bp]	Average Size [bp]	Molarity [pmol/l]	Conc. [pg/µl]	Corr. Area	% of Total	Size distribution in CV [%]	Color
139	162	153	9,980.9	1,003.37	82.3	3	4.2	

Assay Class: High Sensitivity DNA Assay
 Data Path: C:\...ents and Settings\Bioanalyzer\2012-06-25\2012-06-25_003.xad

Created: 6/25/2012 3:08:34 PM
 Modified: 6/26/2012 9:40:06 AM

Electropherogram Summary Continued ...

#37 sRNA PCR (6/19/12) 11 cyc



Overall Results for sample 11 : #37 sRNA PCR (6/19/12) 11 cyc

Number of peaks found: 16 Corr. Area 1: 163.2
 Noise: 0.1

Peak table for sample 11 : #37 sRNA PCR (6/19/12) 11 cyc

Peak	Size [bp]	Conc. [pg/μl]	Molarity [pmol/l]	Observations
1	35	125.00	5,411.3	Lower Marker
2	42	5,527.53	197,074.3	
3	71	19,864.71	421,477.8	
4	89	1,205.93	20,470.0	
5	106	1,196.44	17,084.8	
6	119	644.73	8,180.8	
7	126	1,502.46	18,058.6	
8	140	499.08	5,386.4	
9	152	315.71	3,153.9	
10	164	510.34	4,710.2	
11	183	1,138.64	9,432.2	
12	193	2,126.25	16,709.6	
13	207	333.65	2,443.2	
14	237	242.01	1,544.7	
15	251	240.52	1,454.7	
16	265	196.98	1,127.5	
17	299	251.44	1,272.6	
18	10,380	75.00	10.9	Upper Marker

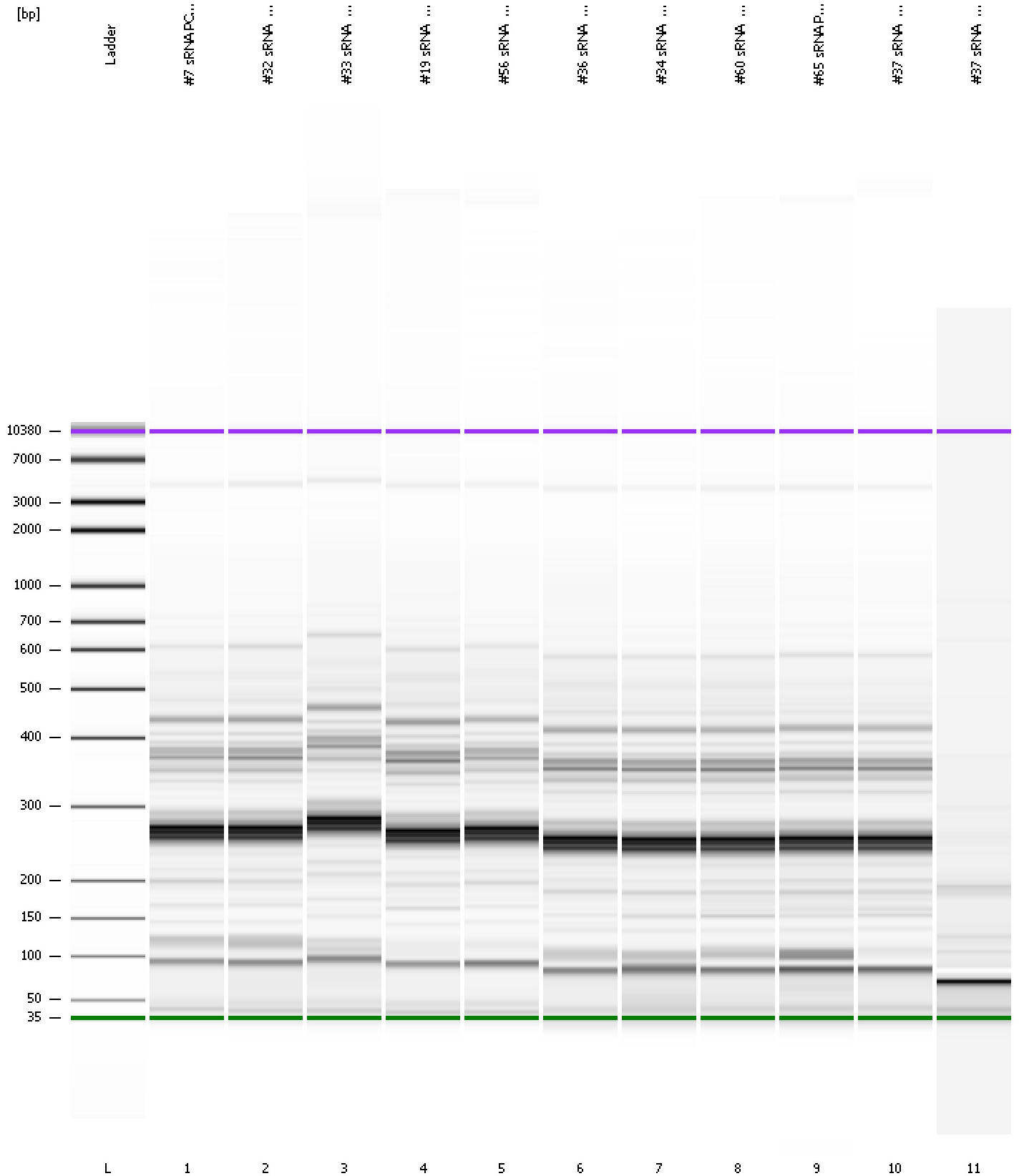
Region table for sample 11 : #37 sRNA PCR (6/19/12) 11 cyc

From [bp]	To [bp]	Average Size [bp]	Molarity [pmol/l]	Conc. [pg/μl]	Corr. Area	% of Total	Size distribution in CV [%]	Color
200	1,000	340	24,324.5	4,632.39	163.2	14	43.7	Blue

Assay Class: High Sensitivity DNA Assay
Data Path: C:\...ents and Settings\Bioanalyzer\2012-06-25\2012-06-25_003.xad

Created: 6/25/2012 3:08:34 PM
Modified: 6/26/2012 9:40:06 AM

Gel Image



Assay Class: High Sensitivity DNA Assay
 Data Path: C:\...ents and Settings\Bioanalyzer\2012-06-25\2012-06-25_003.xad

Created: 6/25/2012 3:08:34 PM
 Modified: 6/26/2012 9:40:06 AM

Run Logbook

Description	Number	Source	Category	Sub Category	Time	Time Zone	User	Host
Run ended on port 1 (Number of wells acquired: 12)		Instrument	Run		6/25/2012 3:49:53 PM	(GMT --07:00) Pacific Standard Time	UC Davis	D8XSMGH1
Run started on port 1 (File: C:\Documents and Settings\Bioanalyzer\2012-06-25\2012-06-25_003.xad)		Instrument	Run		6/25/2012 3:08:39 PM	(GMT --07:00) Pacific Standard Time	UC Davis	D8XSMGH1
Product Number : G2938B		Instrument	Run		6/25/2012 3:08:39 PM	(GMT --07:00) Pacific Standard Time	UC Davis	D8XSMGH1
Name :		Instrument	Run		6/25/2012 3:08:39 PM	(GMT --07:00) Pacific Standard Time	UC Davis	D8XSMGH1
Vendor : Agilent Technologies		Instrument	Run		6/25/2012 3:08:39 PM	(GMT --07:00) Pacific Standard Time	UC Davis	D8XSMGH1
Serial# : DE13701086		Instrument	Run		6/25/2012 3:08:39 PM	(GMT --07:00) Pacific Standard Time	UC Davis	D8XSMGH1
Firmware : C.01.069		Instrument	Run		6/25/2012 3:08:39 PM	(GMT --07:00) Pacific Standard Time	UC Davis	D8XSMGH1
Cartridge : Electrode		Instrument	Run		6/25/2012 3:08:39 PM	(GMT --07:00) Pacific Standard Time	UC Davis	D8XSMGH1