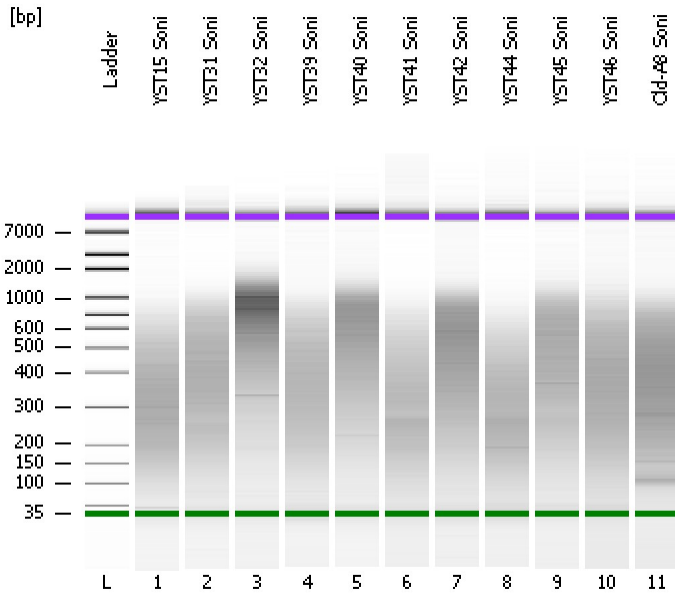


Assay Class: High Sensitivity DNA Assay
Data Path: C:\...ents and Settings\Bioanalyzer\2012-06-25\2012-06-25_004.xad

Created: 6/25/2012 4:16:59 PM
Modified: 6/25/2012 5:01:27 PM

Electrophoresis File Run Summary



Instrument Information:

Instrument Name: DE13701086 Firmware: C.01.069
Serial#: DE13701086 Type: G2938B

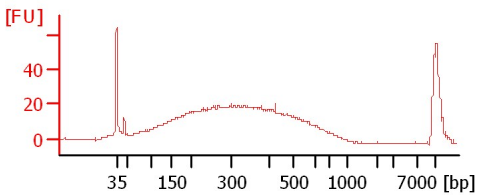
Assay Information:

Assay Origin Path: C:\Program Files\Agilent\2100 bioanalyzer\2100 expert\assays\dsDNA\High Sensitivity DNA.xsy
Assay Class: High Sensitivity DNA Assay
Version: 1.03
Assay Comments: Copyright © 2003-2010 Agilent Technologies

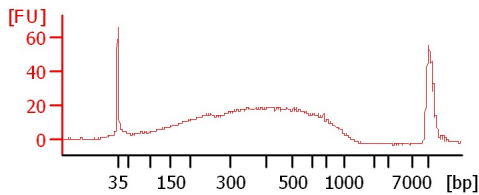
Chip Information:

Chip Lot #:
Reagent Kit Lot #:
Chip Comments:

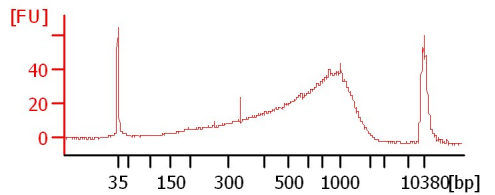
YST15 Soni



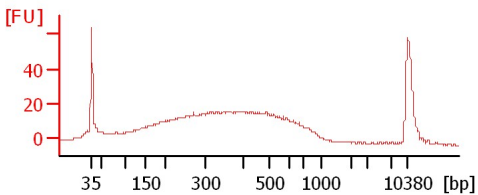
YST31 Soni



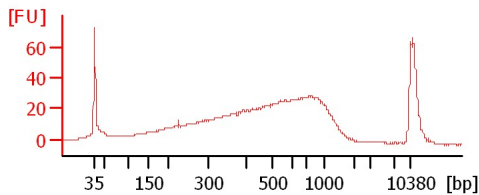
YST32 Soni



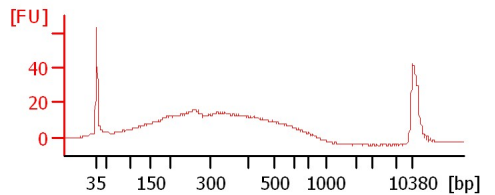
YST39 Soni



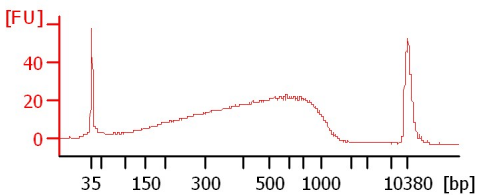
YST40 Soni



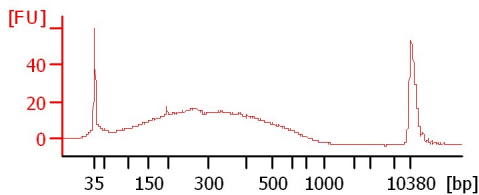
YST41 Soni



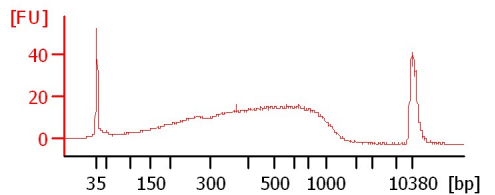
YST42 Soni



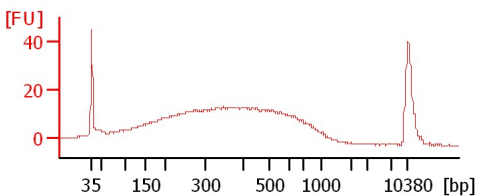
YST44 Soni



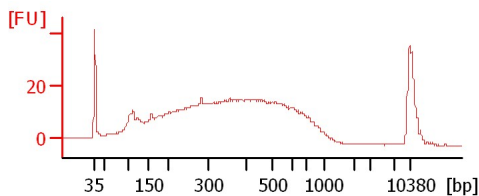
YST45 Soni



YST46 Soni



Old-A8 Soni



Assay Class: High Sensitivity DNA Assay
Data Path: C:\...ents and Settings\Bioanalyzer\2012-06-25\2012-06-25_004.xad

Created: 6/25/2012 4:16:59 PM
Modified: 6/25/2012 5:01:27 PM

Electrophoresis File Run Summary (Chip Summary)

Sample Name	Sample Comment	Rest. Digest	Status	Observation	Result Label	Result Color
YST15 Soni		<input type="checkbox"/>	✓			
YST31 Soni		<input type="checkbox"/>	✓			
YST32 Soni		<input type="checkbox"/>	✓			
YST39 Soni		<input type="checkbox"/>	✓			
YST40 Soni		<input type="checkbox"/>	✓			
YST41 Soni		<input type="checkbox"/>	✓			
YST42 Soni		<input type="checkbox"/>	✓			
YST44 Soni		<input type="checkbox"/>	✓			
YST45 Soni		<input type="checkbox"/>	✓			
YST46 Soni		<input type="checkbox"/>	✓			
Old-A8 Soni		<input type="checkbox"/>	✓			
Ladder		<input type="checkbox"/>	✓			

Chip Lot #

Reagent Kit Lot #

Chip Comments :

Assay Class: High Sensitivity DNA Assay
Data Path: C:\...ents and Settings\Bioanalyzer\2012-06-25\2012-06-25_004.xad

Created: 6/25/2012 4:16:59 PM
Modified: 6/25/2012 5:01:27 PM

Electrophoresis Assay Details

General Analysis Settings

Number of Available Sample and Ladder Wells (Max.) : 12
Minimum Visible Range [s] : 32
Maximum Visible Range [s] : 138
Start Analysis Time Range [s] : 33
End Analysis Time Range [s] : 137.5
Ladder Concentration [pg/μl] : 1950
Uses Standard Area for Ladder Fragments
Lower Marker Concentration [pg/μl] : 125
Upper Marker Concentration [pg/μl] : 75
Used Upper Marker for Quantitation
Standard Curve Fit is Point to Point
Show Data Aligned to Lower and Upper Marker

Integrator Settings

Integration Start Time [s] : 33.05
Integration End Time [s] : 137
Slope Threshold : 0.8
Height Threshold [FU] : 5
Area Threshold : 0.1
Width Threshold [s] : 0.6
Baseline Plateau [s] : 0.5

Filter Settings

Filter Width [s] : 0.5
Polynomial Order : 4

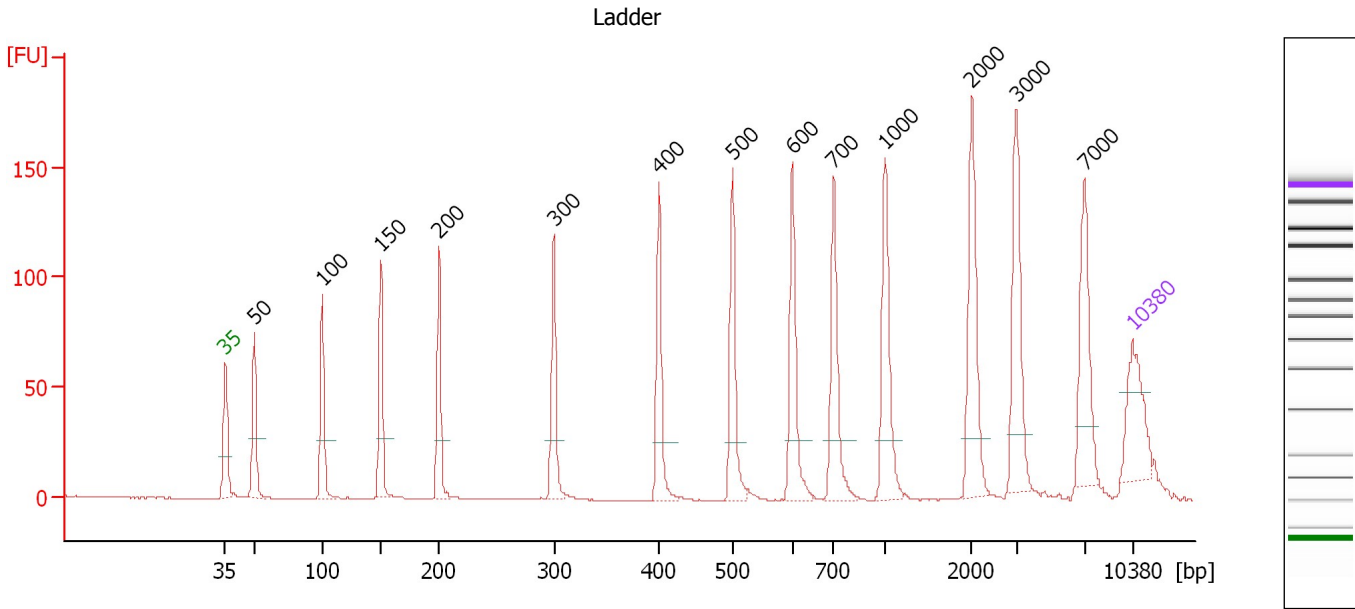
Ladder

Ladder Peak	Size	Area
1	35	160
2	50	210
3	100	208
4	150	221
5	200	242
6	300	270
7	400	305
8	500	306
9	600	336
10	700	321
11	1000	366
12	2000	413
13	3000	411
14	7000	400
15	10380	214

Assay Class: High Sensitivity DNA Assay
 Data Path: C:\...ents and Settings\Bioanalyzer\2012-06-25\2012-06-25_004.xad

Created: 6/25/2012 4:16:59 PM
 Modified: 6/25/2012 5:01:27 PM

Electropherogram Summary



Overall Results for Ladder

Noise: 0.1

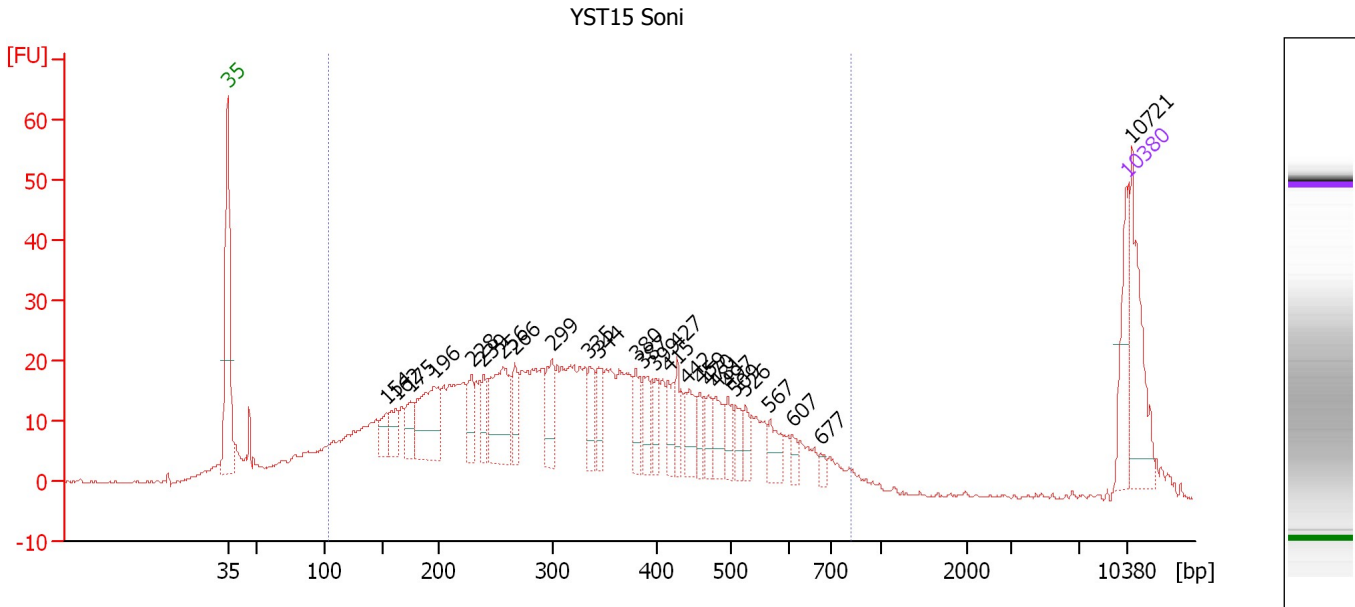
Peak table for Ladder

Peak	Size [bp]	Conc. [pg/μl]	Molarity [pmol/l]	Observations
1	35	125.00	5,411.3	Lower Marker
2	50	150.00	4,545.5	Ladder Peak
3	100	150.00	2,272.7	Ladder Peak
4	150	150.00	1,515.2	Ladder Peak
5	200	150.00	1,136.4	Ladder Peak
6	300	150.00	757.6	Ladder Peak
7	400	150.00	568.2	Ladder Peak
8	500	150.00	454.5	Ladder Peak
9	600	150.00	378.8	Ladder Peak
10	700	150.00	324.7	Ladder Peak
11	1,000	150.00	227.3	Ladder Peak
12	2,000	150.00	113.6	Ladder Peak
13	3,000	150.00	75.8	Ladder Peak
14	7,000	150.00	32.5	Ladder Peak
15	10,380	75.00	10.9	Upper Marker

Assay Class: High Sensitivity DNA Assay
 Data Path: C:\...ents and Settings\Bioanalyzer\2012-06-25\2012-06-25_004.xad

Created: 6/25/2012 4:16:59 PM
 Modified: 6/25/2012 5:01:27 PM

Electropherogram Summary Continued ...



Overall Results for sample 1 : YST15 Soni

Number of peaks found: 27 Corr. Area 1: 918.1
 Noise: 0.2

Peak table for sample 1 : YST15 Soni


Peak	Size [bp]	Conc. [pg/μl]	Molarity [pmol/l]	Observations
1	35	125.00	5,411.3	Lower Marker
2	154	40.91	402.6	
3	162	51.58	481.5	
4	175	54.55	471.6	
5	196	179.78	1,392.5	
6	228	62.28	413.1	
7	239	54.21	344.1	
8	256	182.67	1,080.7	
9	266	56.79	323.0	
10	299	77.84	394.7	
11	335	59.20	267.7	
12	344	54.17	238.8	
13	380	48.62	194.1	
14	387	46.59	182.5	
15	399	44.51	169.2	
16	415	45.64	166.7	
17	427	44.79	158.9	
18	442	62.14	213.1	
19	459	33.85	111.8	
20	470	38.57	124.5	
21	481	48.88	154.1	
22	497	35.53	108.2	
23	509	34.92	103.9	
24	526	31.00	89.2	
25	567	41.40	110.6	
26	607	16.02	40.0	

Assay Class: High Sensitivity DNA Assay
 Data Path: C:\...ents and Settings\Bioanalyzer\2012-06-25\2012-06-25_004.xad

Created: 6/25/2012 4:16:59 PM
 Modified: 6/25/2012 5:01:27 PM

Electropherogram Summary Continued ...

... Peak table for sample 1 : YST15 Soni

Peak	Size [bp]	Conc. [pg/μl]	Molarity [pmol/l]	Observations
27	677	13.08	29.3	
28	 10,380	75.00	10.9	Upper Marker
29	10,721	0.00	0.0	

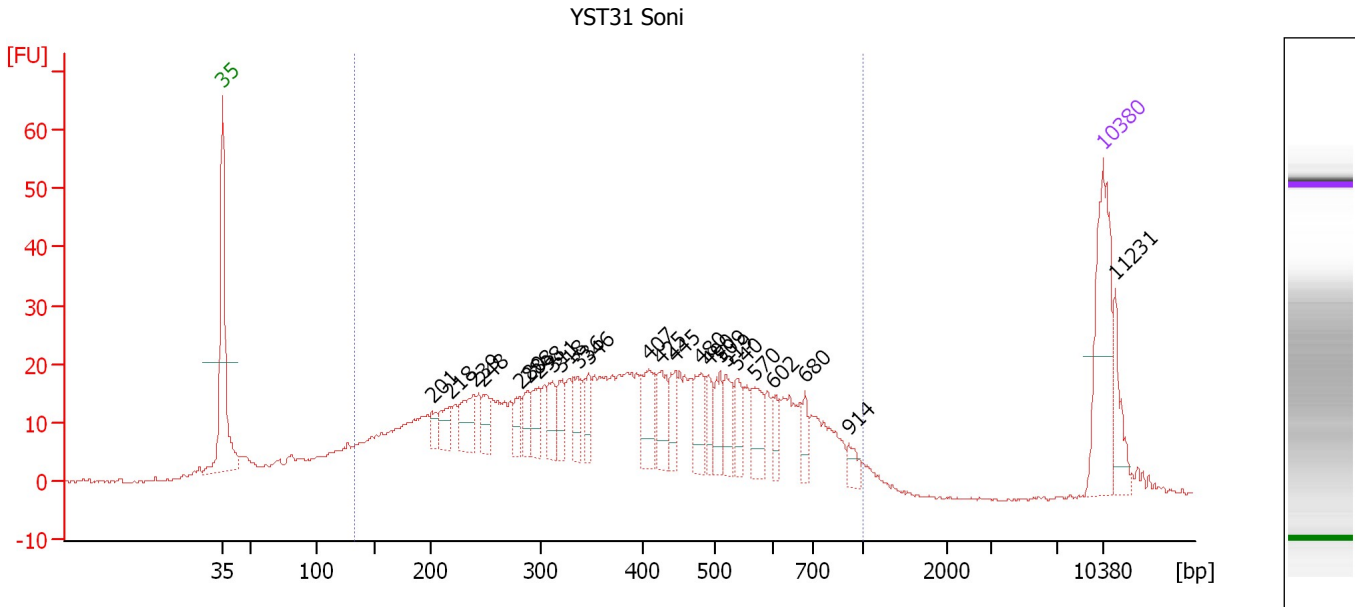
Region table for sample 1 : YST15 Soni

From [bp]	To [bp]	Average Size [bp]	Molarity [pmol/l]	Conc. [pg/μl]	Corr. Area	% of Total	Size distribution in CV [%]	Color
105	826	340	21,916.1	3,683.03	918.1	85	41.3	

Assay Class: High Sensitivity DNA Assay
 Data Path: C:\...ents and Settings\Bioanalyzer\2012-06-25\2012-06-25_004.xad

Created: 6/25/2012 4:16:59 PM
 Modified: 6/25/2012 5:01:27 PM

Electropherogram Summary Continued ...



Overall Results for sample 2 : YST31 Soni

Number of peaks found: 24 Corr. Area 1: 874.6
 Noise: 0.2

Peak table for sample 2 : YST31 Soni

Peak	Size [bp]	Conc. [pg/μl]	Molarity [pmol/l]	Observations
1	35	125.00	5,411.3	Lower Marker
2	201	13.01	97.9	
3	218	22.56	157.1	
4	239	35.82	226.9	
5	248	19.99	122.2	
6	280	17.20	92.9	
7	288	17.71	93.1	
8	298	23.68	120.5	
9	311	23.91	116.7	
10	318	22.76	108.5	
11	336	26.16	118.1	
12	346	19.07	83.5	
13	407	39.92	148.5	
14	425	30.78	109.8	
15	445	21.14	72.0	
16	480	30.19	95.3	
17	490	18.56	57.4	
18	509	23.51	70.0	
19	519	23.39	68.3	
20	540	19.81	55.6	
21	570	26.46	70.4	
22	602	12.87	32.4	
23	680	13.22	29.5	
24	914	10.00	16.6	
25	10,380	75.00	10.9	Upper Marker
26	11,231	0.00	0.0	

Assay Class: High Sensitivity DNA Assay
Data Path: C:\...ents and Settings\Bioanalyzer\2012-06-25\2012-06-25_004.xad

Created: 6/25/2012 4:16:59 PM
Modified: 6/25/2012 5:01:27 PM

Electropherogram Summary Continued ...

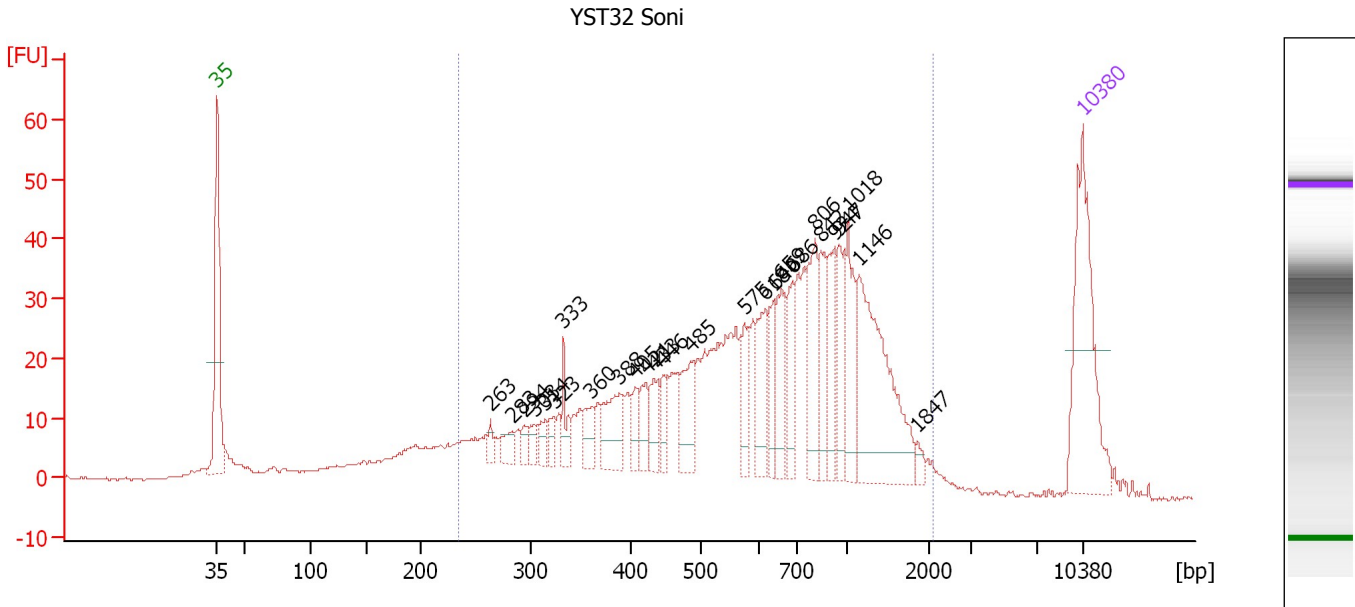
... Region table for sample 2 : YST31 Soni

From [bp]	To [bp]	Average Size [bp]	Molarity [pmol/l]	Conc. [pg/μl]	Corr. Area	% of Total	Size distribution in CV [%]	Color
133	1,000	408	7,170.3	1,443.30	874.6	87	42.5	■

Assay Class: High Sensitivity DNA Assay
 Data Path: C:\...ents and Settings\Bioanalyzer\2012-06-25\2012-06-25_004.xad

Created: 6/25/2012 4:16:59 PM
 Modified: 6/25/2012 5:01:27 PM

Electropherogram Summary Continued ...



Overall Results for sample 3 : YST32 Soni

Number of peaks found: 26 Corr. Area 1: 967.8
 Noise: 0.2

Peak table for sample 3 : YST32 Soni

Peak	Size [bp]	Conc. [pg/μl]	Molarity [pmol/l]	Observations
1	35	125.00	5,411.3	Lower Marker
2	263	6.44	37.1	
3	283	12.50	66.9	
4	294	7.17	37.0	
5	303	9.03	45.1	
6	314	10.99	53.0	
7	323	9.17	43.0	
8	333	17.23	78.5	
9	360	14.27	60.0	
10	388	35.37	138.0	
11	405	13.74	51.4	
12	421	16.10	57.9	
13	433	18.88	66.1	
14	446	14.56	49.5	
15	485	33.66	105.1	
16	575	20.64	54.4	
17	618	32.21	78.9	
18	640	22.01	52.1	
19	659	29.87	68.7	
20	686	26.25	58.0	
21	806	45.88	86.3	
22	842	28.40	51.1	
23	924	25.60	42.0	
24	947	27.51	44.0	
25	1,018	35.58	53.0	
26	1,146	103.42	136.7	

Assay Class: High Sensitivity DNA Assay
 Data Path: C:\...ents and Settings\Bioanalyzer\2012-06-25\2012-06-25_004.xad

Created: 6/25/2012 4:16:59 PM
 Modified: 6/25/2012 5:01:27 PM

Electropherogram Summary Continued ...

... Peak table for sample 3 : YST32 Soni

Peak	Size [bp]	Conc. [pg/μl]	Molarity [pmol/l]	Observations
27	1,847	4.38	3.6	
28	▶ 10,380	75.00	10.9	Upper Marker

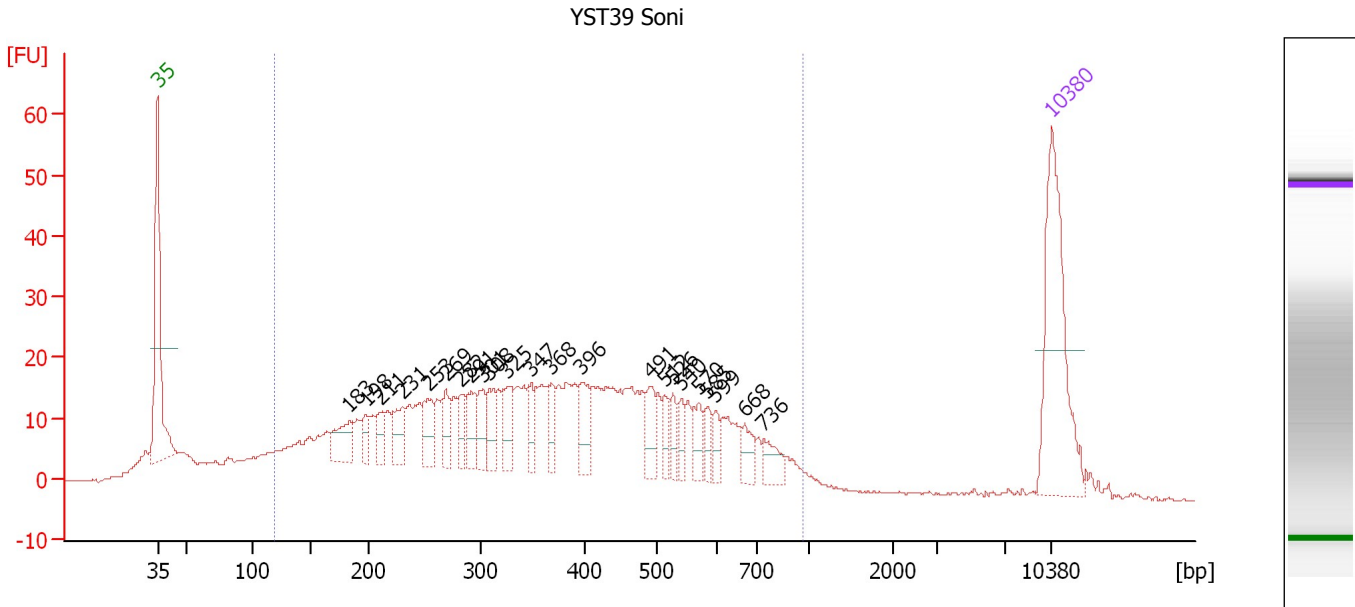
Region table for sample 3 : YST32 Soni

From [bp]	To [bp]	Average Size [bp]	Molarity [pmol/l]	Conc. [pg/μl]	Corr. Area	% of Total	Size distribution in CV [%]	Color
234	2,057	715	3,167.5	1,067.59	967.8	86	52.0	■

Assay Class: High Sensitivity DNA Assay
 Data Path: C:\...ents and Settings\Bioanalyzer\2012-06-25\2012-06-25_004.xad

Created: 6/25/2012 4:16:59 PM
 Modified: 6/25/2012 5:01:27 PM

Electropherogram Summary Continued ...



Overall Results for sample 4 : YST39 Soni

Number of peaks found: 23 Corr. Area 1: 771.4
 Noise: 0.2

Peak table for sample 4 : YST39 Soni

Peak	Size [bp]	Conc. [pg/μl]	Molarity [pmol/l]	Observations
1	35	125.00	5,411.3	Lower Marker
2	183	27.40	226.4	
3	198	11.17	85.6	
4	211	13.68	98.4	
5	231	21.50	141.3	
6	253	23.09	138.2	
7	269	17.75	100.1	
8	282	14.11	76.0	
9	291	16.49	85.8	
10	301	17.68	89.1	
11	308	19.94	98.2	
12	325	21.02	98.0	
13	347	14.18	61.9	
14	368	13.86	57.1	
15	396	21.47	82.2	
16	491	16.68	51.4	
17	512	10.86	32.1	
18	526	10.45	30.1	
19	540	9.89	27.8	
20	570	13.73	36.5	
21	585	8.50	22.0	
22	599	7.89	20.0	
23	668	11.69	26.5	
24	736	13.38	27.5	
25	10,380	75.00	10.9	Upper Marker

Assay Class: High Sensitivity DNA Assay
Data Path: C:\...ents and Settings\Bioanalyzer\2012-06-25\2012-06-25_004.xad

Created: 6/25/2012 4:16:59 PM
Modified: 6/25/2012 5:01:27 PM

Electropherogram Summary Continued ...

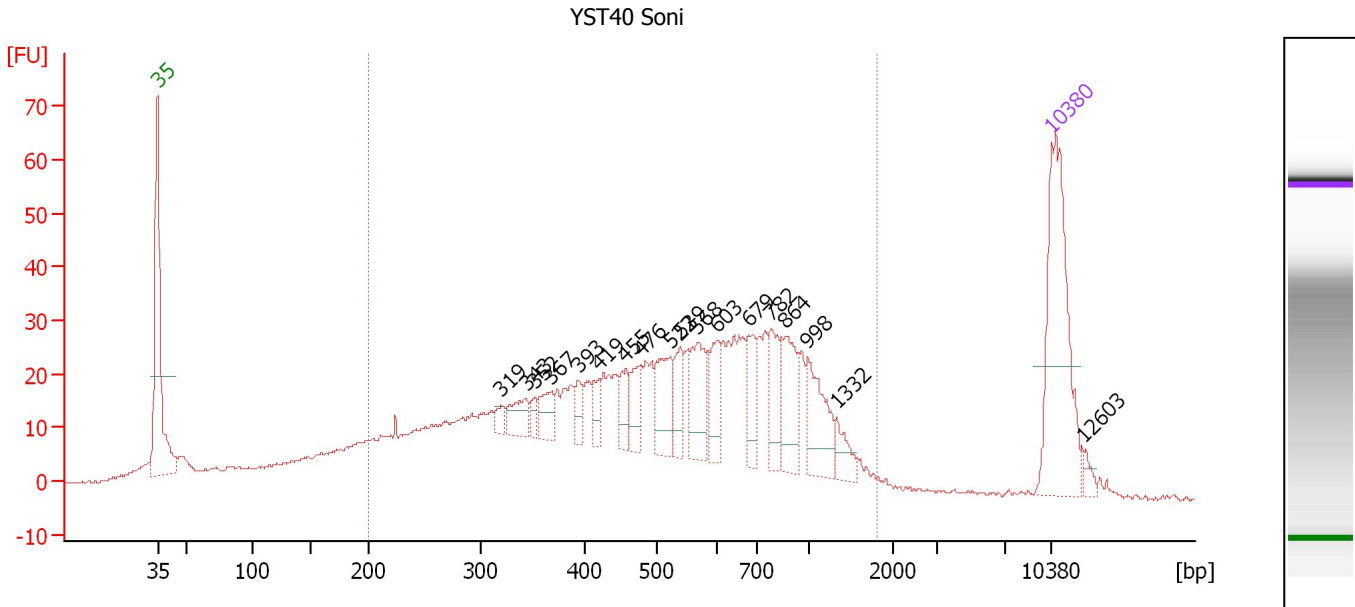
... Region table for sample 4 : YST39 Soni

From [bp]	To [bp]	Average Size [bp]	Molarity [pmol/l]	Conc. [pg/μl]	Corr. Area	% of Total	Size distribution in CV [%]	Color
118	965	389	5,091.6	967.81	771.4	88	42.5	■

Assay Class: High Sensitivity DNA Assay
 Data Path: C:\...ents and Settings\Bioanalyzer\2012-06-25\2012-06-25_004.xad

Created: 6/25/2012 4:16:59 PM
 Modified: 6/25/2012 5:01:27 PM

Electropherogram Summary Continued ...



Overall Results for sample 5 : YST40 Soni

Number of peaks found: 18 Corr. Area 1: 961.7
 Noise: 0.2

Peak table for sample 5 : YST40 Soni

Peak	Size [bp]	Conc. [pg/μl]	Molarity [pmol/l]	Observations
1	35	125.00	5,411.3	Lower Marker
2	319	6.28	29.8	
3	343	16.09	71.1	
4	352	6.13	26.4	
5	367	14.19	58.6	
6	393	8.59	33.1	
7	419	9.05	32.7	
8	455	14.44	48.1	
9	476	16.84	53.6	
10	522	30.39	88.2	
11	539	17.66	49.6	
12	568	30.39	81.1	
13	603	20.28	51.0	
14	679	20.40	45.5	
15	782	23.56	45.6	
16	864	29.57	51.8	
17	998	32.04	48.7	
18	1,332	10.32	11.7	
19	10,380	75.00	10.9	Upper Marker
20	12,603	0.00	0.0	

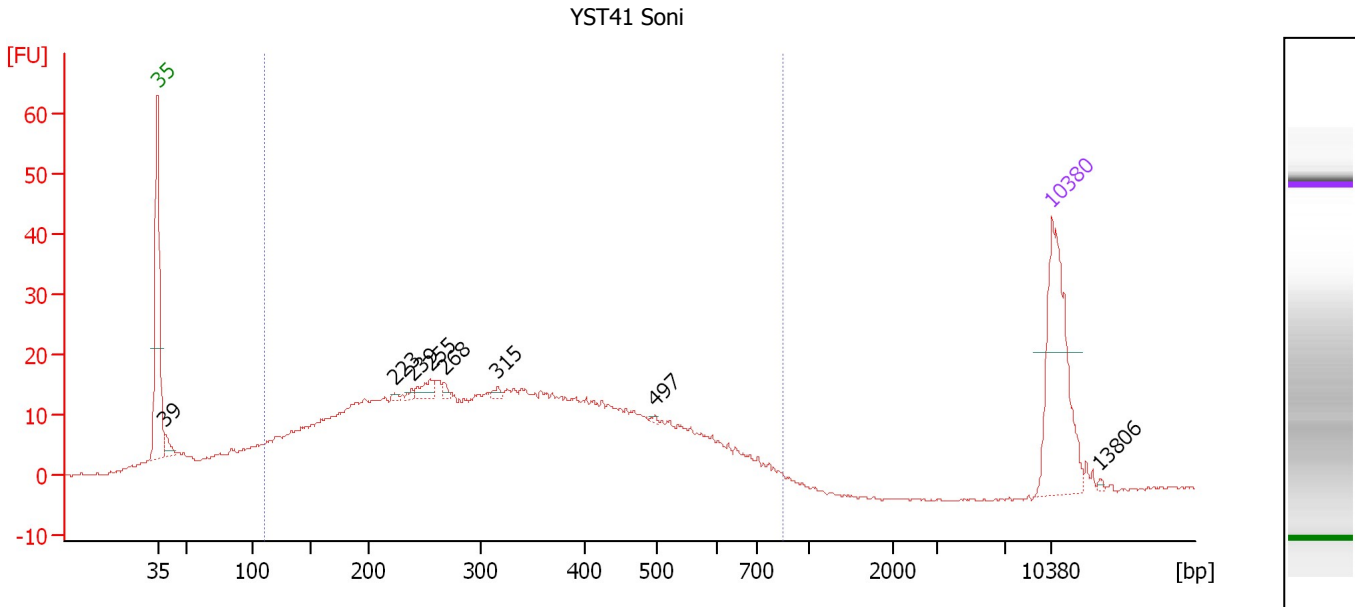
Region table for sample 5 : YST40 Soni

From [bp]	To [bp]	Average Size [bp]	Molarity [pmol/l]	Conc. [pg/μl]	Corr. Area	% of Total	Size distribution in CV [%]	Color
200	1,811	578	3,266.5	913.92	961.7	84	50.5	Blue

Assay Class: High Sensitivity DNA Assay
 Data Path: C:\...ents and Settings\Bioanalyzer\2012-06-25\2012-06-25_004.xad

Created: 6/25/2012 4:16:59 PM
 Modified: 6/25/2012 5:01:27 PM

Electropherogram Summary Continued ...



Setpoint Deviations for sample 6 : YST41 Soni

Height Threshold [FU] : 1

Overall Results for sample 6 : YST41 Soni

Number of peaks found: 8 Corr. Area 1: 674.4
 Noise: 0.2

Peak table for sample 6 : YST41 Soni

Peak	Size [bp]	Conc. [pg/μl]	Molarity [pmol/l]	Observations
1	35	125.00	5,411.3	Lower Marker
2	39	9.16	355.7	
3	223	1.70	11.6	
4	239	2.64	16.7	
5	255	10.06	59.8	
6	268	3.07	17.4	
7	315	2.83	13.6	
8	497	0.94	2.9	
9	10,380	75.00	10.9	Upper Marker
10	13,806	0.00	0.0	

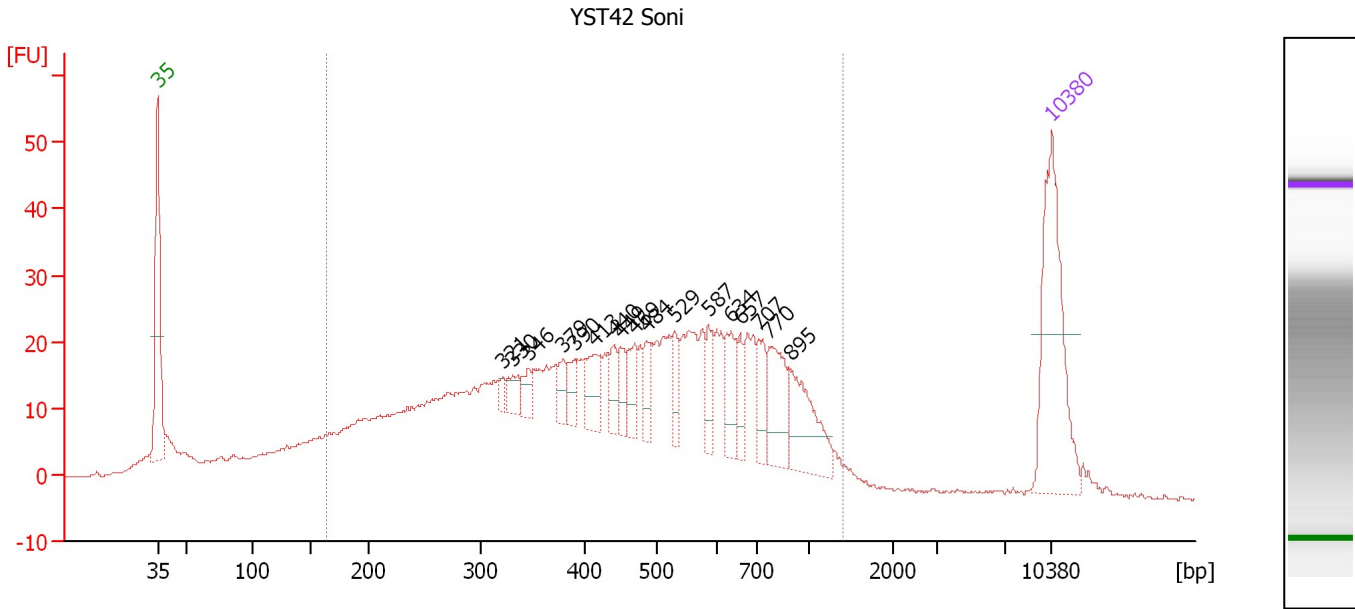
Region table for sample 6 : YST41 Soni

From [bp]	To [bp]	Average Size [bp]	Molarity [pmol/l]	Conc. [pg/μl]	Corr. Area	% of Total	Size distribution in CV [%]	Color
110	846	339	6,505.5	1,098.18	674.4	88	41.6	Blue

Assay Class: High Sensitivity DNA Assay
 Data Path: C:\...ents and Settings\Bioanalyzer\2012-06-25\2012-06-25_004.xad

Created: 6/25/2012 4:16:59 PM
 Modified: 6/25/2012 5:01:27 PM

Electropherogram Summary Continued ...



Overall Results for sample 7 : YST42 Soni

Number of peaks found: 17 Corr. Area 1: 891.0
 Noise: 0.1

Peak table for sample 7 : YST42 Soni

Peak	Size [bp]	Conc. [pg/μl]	Molarity [pmol/l]	Observations
1	35	125.00	5,411.3	Lower Marker
2	321	5.91	27.9	
3	330	11.93	54.7	
4	346	10.20	44.7	
5	379	13.29	53.2	
6	390	13.69	53.2	
7	413	21.94	80.5	
8	440	15.12	52.1	
9	449	12.47	42.1	
10	469	16.78	54.2	
11	484	14.68	45.9	
12	529	14.74	42.2	
13	587	16.04	41.4	
14	634	22.51	53.8	
15	657	14.31	33.0	
16	707	18.87	40.4	
17	770	36.14	71.1	
18	895	40.89	69.2	
19	10,380	75.00	10.9	Upper Marker

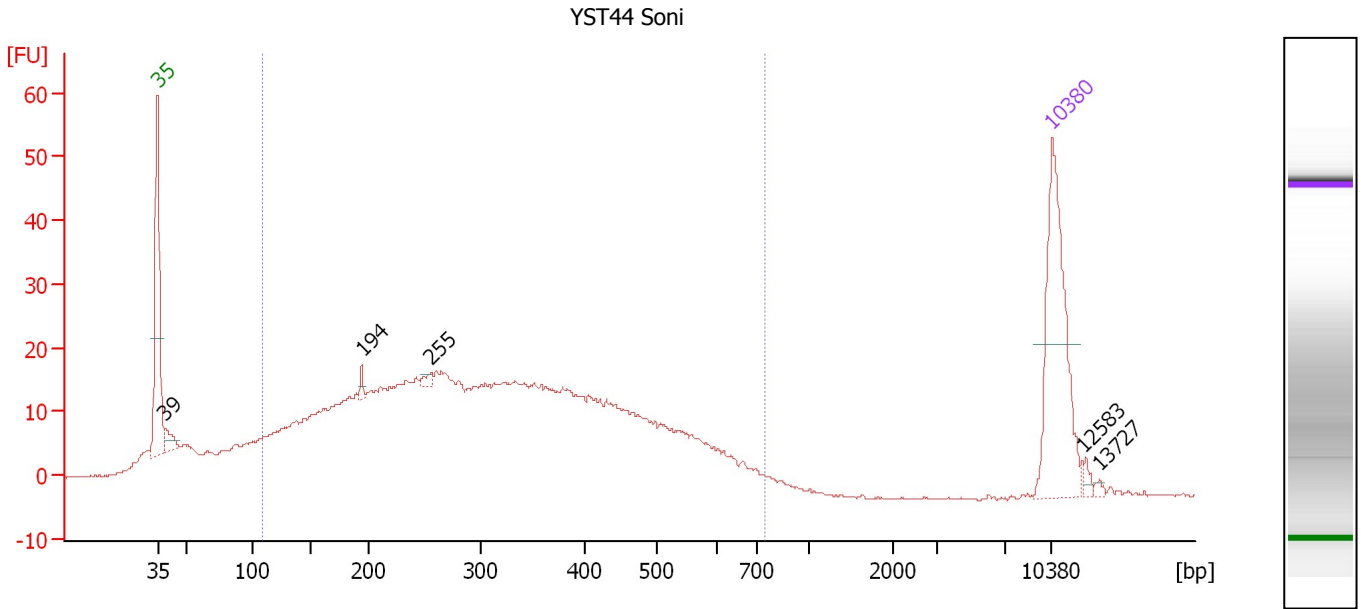
Region table for sample 7 : YST42 Soni

From [bp]	To [bp]	Average Size [bp]	Molarity [pmol/l]	Conc. [pg/μl]	Corr. Area	% of Total	Size distribution in CV [%]	Color
163	1,413	495	4,775.6	1,151.70	891.0	86	46.2	Blue

Assay Class: High Sensitivity DNA Assay
 Data Path: C:\...ents and Settings\Bioanalyzer\2012-06-25\2012-06-25_004.xad

Created: 6/25/2012 4:16:59 PM
 Modified: 6/25/2012 5:01:27 PM

Electropherogram Summary Continued ...



Setpoint Deviations for sample 8 : YST44 Soni

Height Threshold [FU] : 2

Overall Results for sample 8 : YST44 Soni

Number of peaks found: 5 Corr. Area 1: 706.3
 Noise: 0.2

Peak table for sample 8 : YST44 Soni

Peak	Size [bp]	Conc. [pg/μl]	Molarity [pmol/l]	Observations
1	35	125.00	5,411.3	Lower Marker
2	39	12.18	472.4	
3	194	3.99	31.2	
4	255	3.99	23.7	
5	10,380	75.00	10.9	Upper Marker
6	12,583	0.00	0.0	
7	13,727	0.00	0.0	

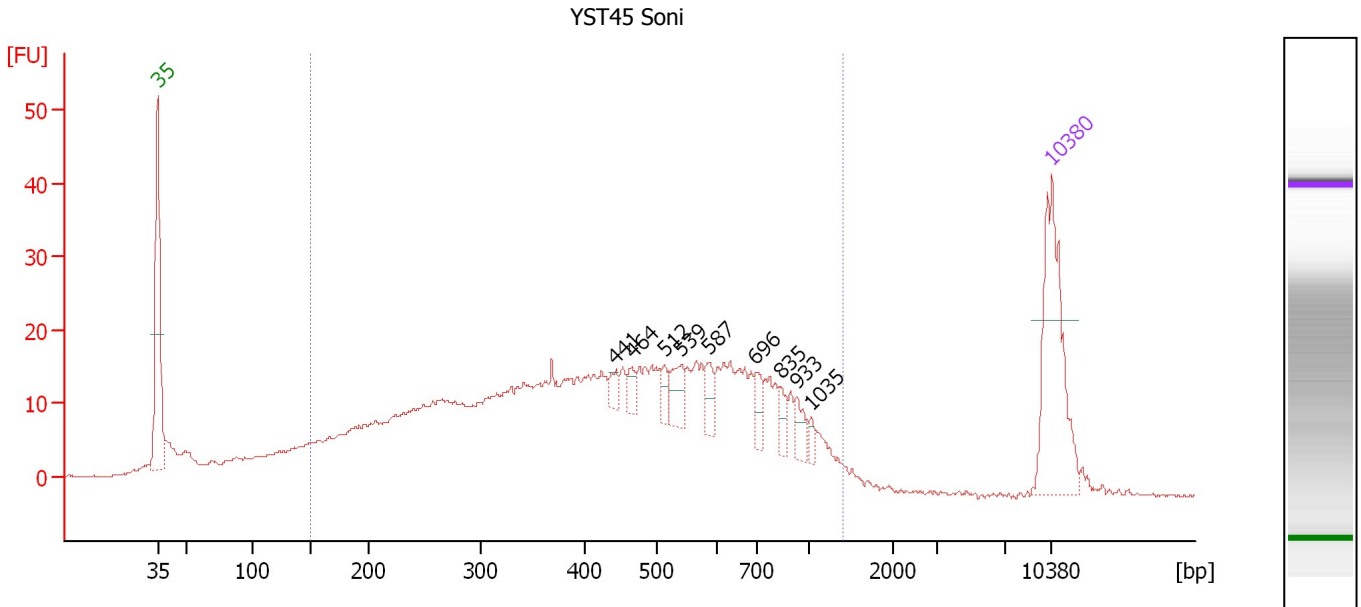
Region table for sample 8 : YST44 Soni

From [bp]	To [bp]	Average Size [bp]	Molarity [pmol/l]	Conc. [pg/μl]	Corr. Area	% of Total	Size distribution in CV [%]	Color
108	740	325	6,249.0	1,021.77	706.3	86	40.4	Blue

Assay Class: High Sensitivity DNA Assay
 Data Path: C:\...ents and Settings\Bioanalyzer\2012-06-25\2012-06-25_004.xad

Created: 6/25/2012 4:16:59 PM
 Modified: 6/25/2012 5:01:27 PM

Electropherogram Summary Continued ...



Overall Results for sample 9 : YST45 Soni

Number of peaks found: 9 Corr. Area 1: 691.3
 Noise: 0.1

Peak table for sample 9 : YST45 Soni

Peak	Size [bp]	Conc. [pg/μl]	Molarity [pmol/l]	Observations
1	35	125.00	5,411.3	Lower Marker
2	441	7.84	26.9	
3	464	8.41	27.4	
4	512	9.46	28.0	
5	539	17.91	50.4	
6	587	11.55	29.8	
7	696	12.19	26.5	
8	835	9.12	16.6	
9	933	11.00	17.9	
10	1,035	4.79	7.0	
11	10,380	75.00	10.9	Upper Marker

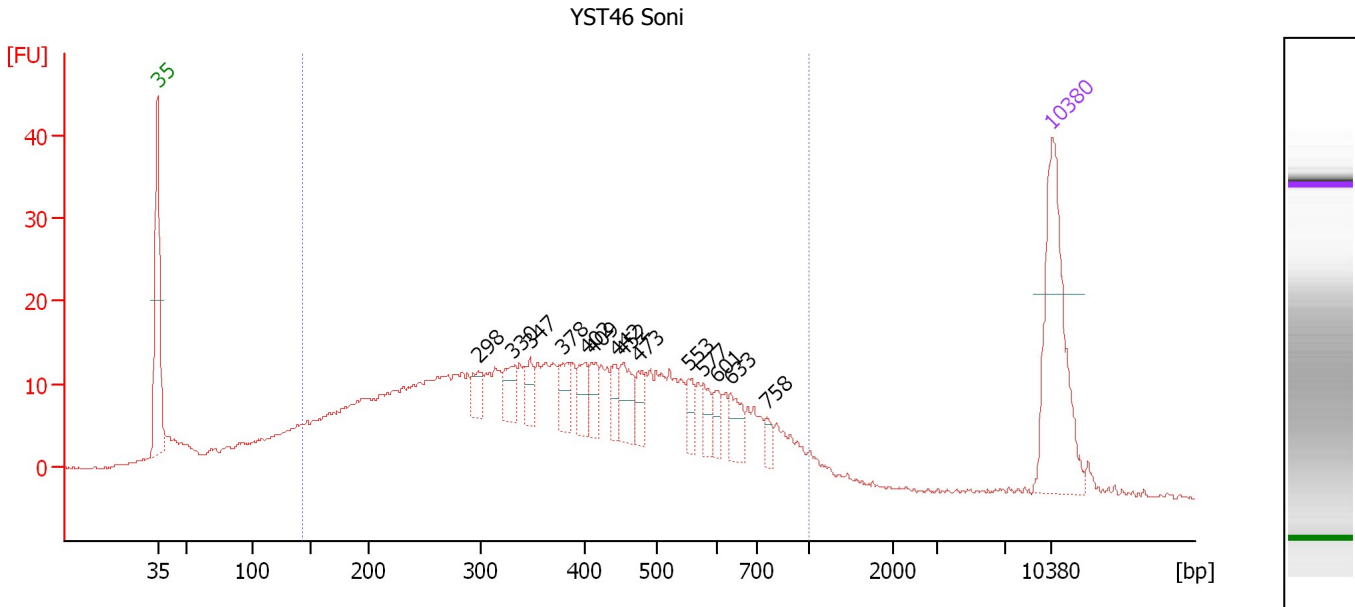
Region table for sample 9 : YST45 Soni

From [bp]	To [bp]	Average Size [bp]	Molarity [pmol/l]	Conc. [pg/μl]	Corr. Area	% of Total	Size distribution in CV [%]	Color
149	1,404	479	5,147.9	1,175.02	691.3	87	48.0	Blue

Assay Class: High Sensitivity DNA Assay
 Data Path: C:\...ents and Settings\Bioanalyzer\2012-06-25\2012-06-25_004.xad

Created: 6/25/2012 4:16:59 PM
 Modified: 6/25/2012 5:01:27 PM

Electropherogram Summary Continued ...



Overall Results for sample 10 : YST46 Soni

Number of peaks found: 14 Corr. Area 1: 618.6
 Noise: 0.2

Peak table for sample 10 : YST46 Soni

Peak	Size [bp]	Conc. [pg/μl]	Molarity [pmol/l]	Observations
1	35	125.00	5,411.3	Lower Marker
2	298	13.58	69.1	
3	330	17.22	79.1	
4	347	14.76	64.4	
5	378	15.91	63.7	
6	402	15.71	59.2	
7	409	14.45	53.5	
8	442	10.91	37.4	
9	452	20.67	69.3	
10	473	12.72	40.7	
11	553	11.62	31.8	
12	577	11.22	29.4	
13	601	8.10	20.4	
14	633	14.83	35.5	
15	758	5.50	11.0	
16	10,380	75.00	10.9	Upper Marker

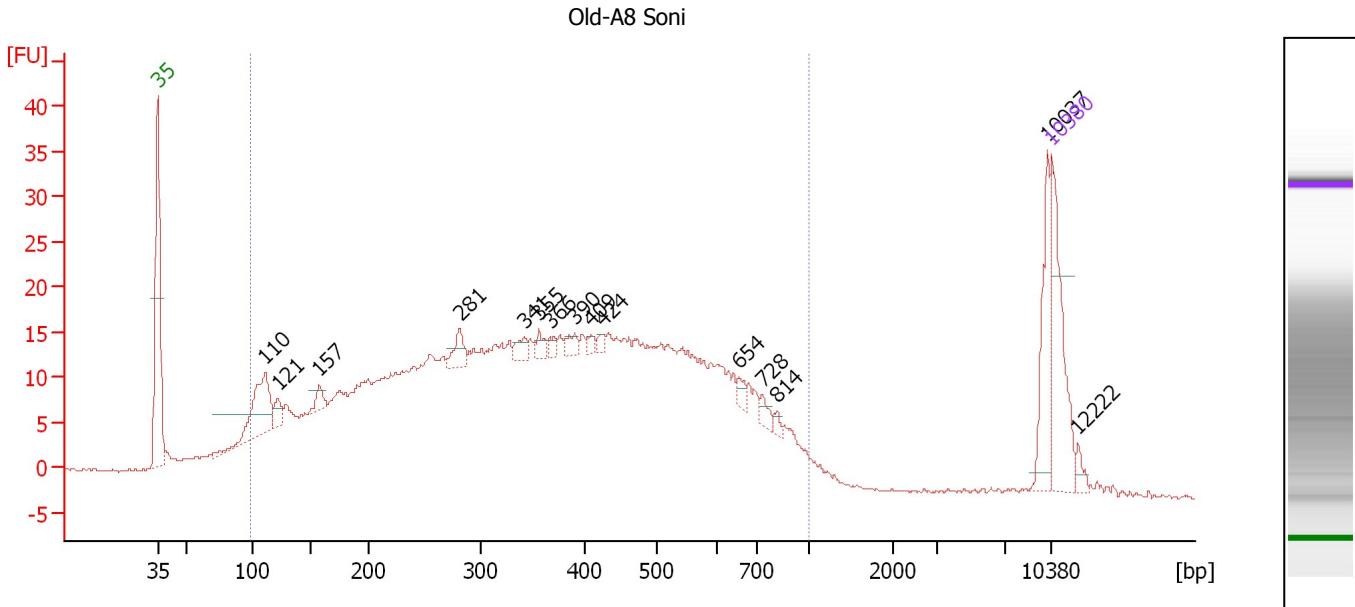
Region table for sample 10 : YST46 Soni

From [bp]	To [bp]	Average Size [bp]	Molarity [pmol/l]	Conc. [pg/μl]	Corr. Area	% of Total	Size distribution in CV [%]	Color
143	1,000	405	5,242.4	1,064.10	618.6	85	42.7	Blue

Assay Class: High Sensitivity DNA Assay
 Data Path: C:\...ents and Settings\Bioanalyzer\2012-06-25\2012-06-25_004.xad

Created: 6/25/2012 4:16:59 PM
 Modified: 6/25/2012 5:01:27 PM

Electropherogram Summary Continued ...



Setpoint Deviations for sample 11 : Old-A8 Soni

Height Threshold [FU] : 2

Overall Results for sample 11 : Old-A8 Soni

Number of peaks found: 15 Corr. Area 1: 763.5
 Noise: 0.1

Peak table for sample 11 : Old-A8 Soni

Peak	Size [bp]	Conc. [pg/µl]	Molarity [pmol/l]	Observations
1	35	125.00	5,411.3	Lower Marker
2	110	96.14	1,323.0	
3	121	16.05	201.0	
4	157	13.75	132.8	
5	281	20.63	111.2	
6	341	11.73	52.1	
7	355	9.60	41.0	
8	366	6.28	26.0	
9	390	9.02	35.0	
10	409	4.91	18.2	
11	424	4.72	16.9	
12	654	7.38	17.1	
13	728	8.28	17.2	
14	814	4.23	7.9	
15	10,037	55.57	8.4	
16	10,380	75.00	10.9	Upper Marker
17	12,222	0.00	0.0	

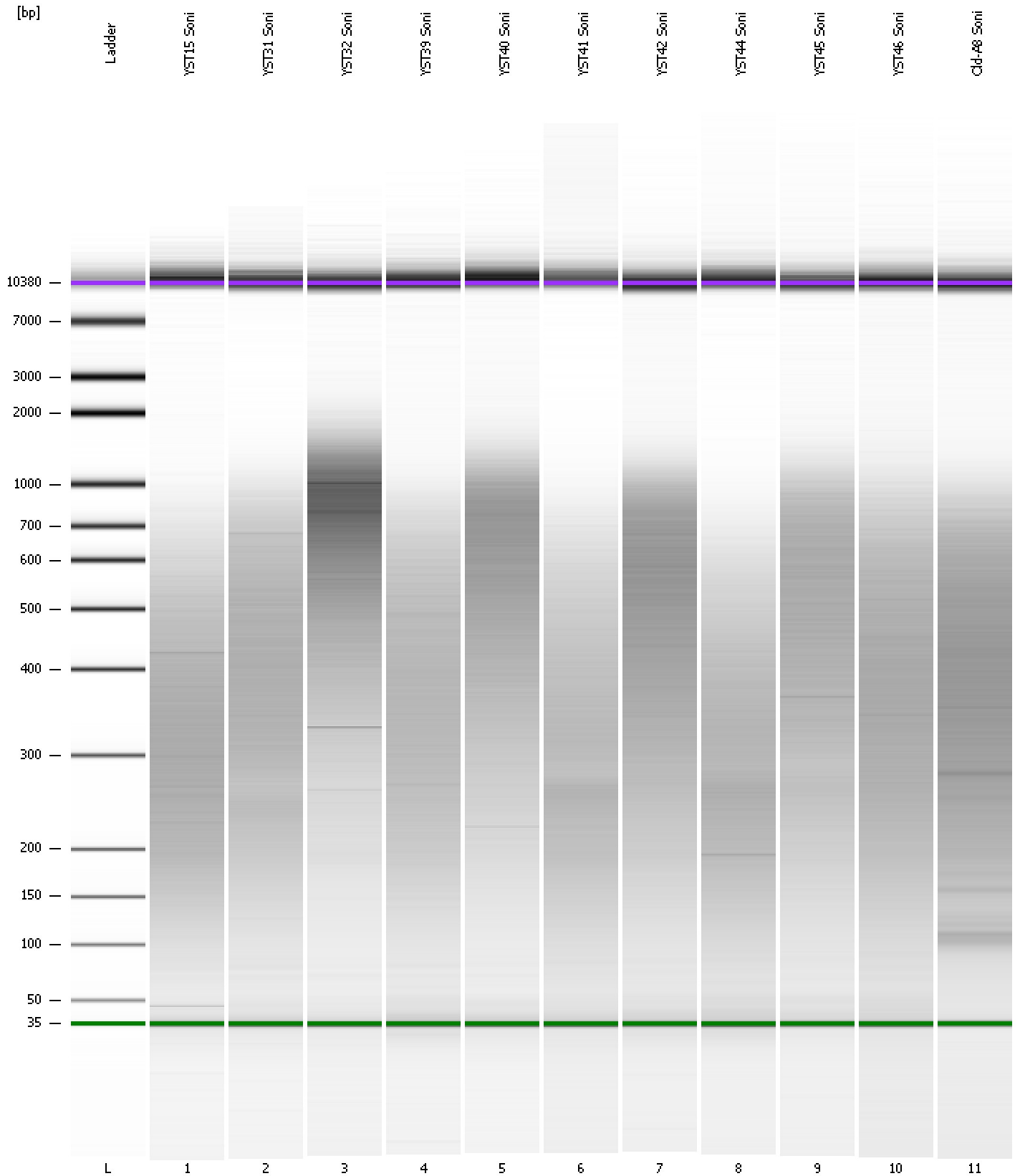
Region table for sample 11 : Old-A8 Soni

From [bp]	To [bp]	Average Size [bp]	Molarity [pmol/l]	Conc. [pg/µl]	Corr. Area	% of Total	Size distribution in CV [%]	Color
97	1,000	387	15,579.4	2,696.29	763.5	91	46.3	Blue

Assay Class: High Sensitivity DNA Assay
Data Path: C:\...ents and Settings\Bioanalyzer\2012-06-25\2012-06-25_004.xad

Created: 6/25/2012 4:16:59 PM
Modified: 6/25/2012 5:01:27 PM

Gel Image



Assay Class: High Sensitivity DNA Assay
 Data Path: C:\...ents and Settings\Bioanalyzer\2012-06-25\2012-06-25_004.xad

Created: 6/25/2012 4:16:59 PM
 Modified: 6/25/2012 5:01:27 PM

Run Logbook

Description	Number	Source	Category	Sub Category	Time	Time Zone	User	Host
Run ended on port 1 (Number of wells acquired: 12)		Instrument	Run		6/25/2012 4:58:18 PM	(GMT --07:00) Pacific Standard Time	UC Davis	D8XSMGH1
Run started on port 1 (File: C:\Documents and Settings\Bioanalyzer\2012-06-25\2012-06-25_004.xad)		Instrument	Run		6/25/2012 4:17:05 PM	(GMT --07:00) Pacific Standard Time	UC Davis	D8XSMGH1
Product Number : G2938B		Instrument	Run		6/25/2012 4:17:05 PM	(GMT --07:00) Pacific Standard Time	UC Davis	D8XSMGH1
Name :		Instrument	Run		6/25/2012 4:17:05 PM	(GMT --07:00) Pacific Standard Time	UC Davis	D8XSMGH1
Vendor : Agilent Technologies		Instrument	Run		6/25/2012 4:17:05 PM	(GMT --07:00) Pacific Standard Time	UC Davis	D8XSMGH1
Serial# : DE13701086		Instrument	Run		6/25/2012 4:17:05 PM	(GMT --07:00) Pacific Standard Time	UC Davis	D8XSMGH1
Firmware : C.01.069		Instrument	Run		6/25/2012 4:17:05 PM	(GMT --07:00) Pacific Standard Time	UC Davis	D8XSMGH1
Cartridge : Electrode		Instrument	Run		6/25/2012 4:17:05 PM	(GMT --07:00) Pacific Standard Time	UC Davis	D8XSMGH1