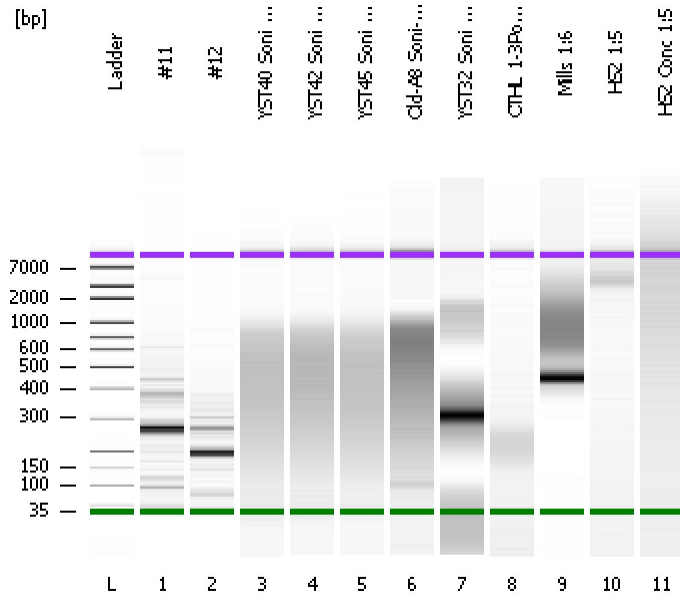


Assay Class: High Sensitivity DNA Assay
Data Path: C:\...ents and Settings\Bioanalyzer\2012-06-26\2012-06-26_002.xad

Created: 6/26/2012 11:30:17 AM
Modified: 6/26/2012 12:15:40 PM

Electrophoresis File Run Summary



Instrument Information:

Instrument Name: DE13701086 Firmware: C.01.069
Serial#: DE13701086 Type: G2938B

Assay Information:

Assay Origin Path: C:\Program Files\Agilent\2100 bioanalyzer\2100 expert\assays\dsDNA\High Sensitivity DNA.xsy
Assay Class: High Sensitivity DNA Assay
Version: 1.03
Assay Comments: Copyright © 2003-2010 Agilent Technologies

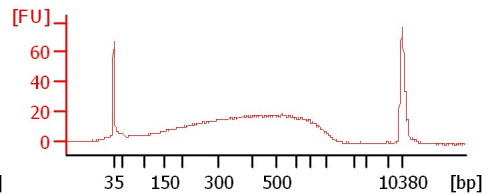
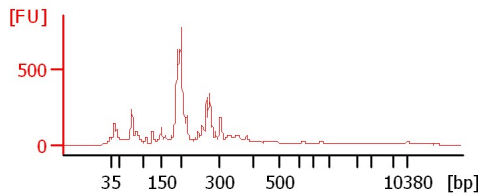
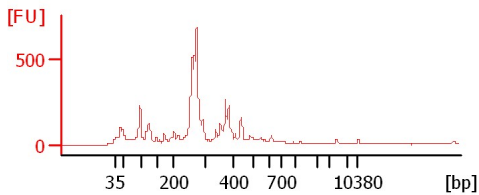
Chip Information:

Chip Lot #:
Reagent Kit Lot #:
Chip Comments:

#11

#12

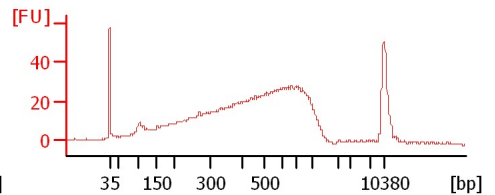
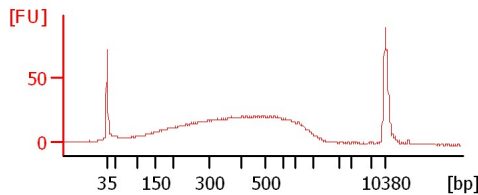
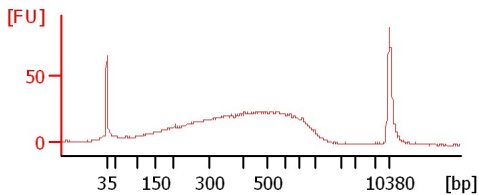
YST40 Soni 9+2 Cycles 1:10



YST42 Soni 9+2 Cycles 1:10

YST45 Soni 9+2 Cycles 1:10

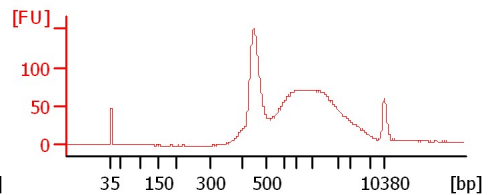
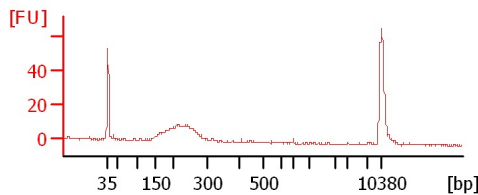
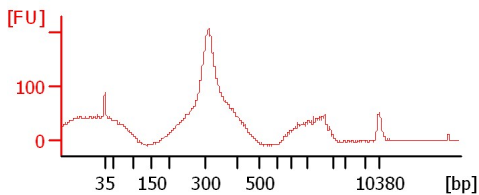
Old-A8 Soni-2 4Cycles 1:10



YST32 Soni 9+3 Cycles 1:10

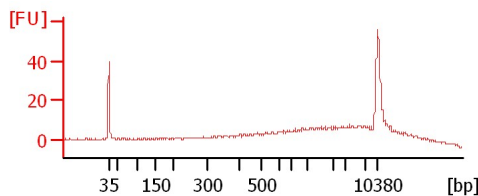
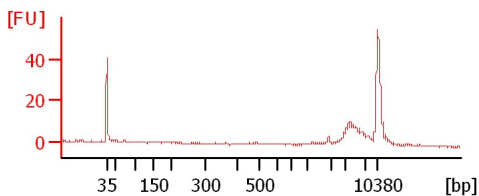
CTHL 1-3Pool 1:10

Mills 1:6



HS2 1:5

HS2 Conc 1:5



Assay Class: High Sensitivity DNA Assay
Data Path: C:\...ents and Settings\Bioanalyzer\2012-06-26\2012-06-26_002.xad

Created: 6/26/2012 11:30:17 AM
Modified: 6/26/2012 12:15:40 PM

Electrophoresis File Run Summary (Chip Summary)

Sample Name	Sample Comment	Rest. Digest	Status	Observation	Result Label	Result Color
#11		<input type="checkbox"/>	✓			
#12		<input type="checkbox"/>	✓			
YST40 Soni 9+2 Cycles 1:10		<input type="checkbox"/>	✓			
YST42 Soni 9+2 Cycles 1:10		<input type="checkbox"/>	✓			
YST45 Soni 9+2 Cycles 1:10		<input type="checkbox"/>	✓			
Old-A8 Soni-2 4Cycles 1:10		<input type="checkbox"/>	✓			
YST32 Soni 9+3 Cycles 1:10		<input type="checkbox"/>	✓			
CTHL 1-3Pool 1:10		<input type="checkbox"/>	✓			
Mills 1:6		<input type="checkbox"/>	✓			
HS2 1:5		<input type="checkbox"/>	✓			
HS2 Conc 1:5		<input type="checkbox"/>	✓			
Ladder		<input type="checkbox"/>	✓			

Chip Lot #

Reagent Kit Lot #

Chip Comments :

Assay Class: High Sensitivity DNA Assay
Data Path: C:\...ents and Settings\Bioanalyzer\2012-06-26\2012-06-26_002.xad

Created: 6/26/2012 11:30:17 AM
Modified: 6/26/2012 12:15:40 PM

Electrophoresis Assay Details

General Analysis Settings

Number of Available Sample and Ladder Wells (Max.) : 12
Minimum Visible Range [s] : 32
Maximum Visible Range [s] : 138
Start Analysis Time Range [s] : 33
End Analysis Time Range [s] : 137.5
Ladder Concentration [pg/μl] : 1950
Uses Standard Area for Ladder Fragments
Lower Marker Concentration [pg/μl] : 125
Upper Marker Concentration [pg/μl] : 75
Used Upper Marker for Quantitation
Standard Curve Fit is Point to Point
Show Data Aligned to Lower and Upper Marker

Integrator Settings

Integration Start Time [s] : 33.05
Integration End Time [s] : 137
Slope Threshold : 0.8
Height Threshold [FU] : 5
Area Threshold : 0.1
Width Threshold [s] : 0.6
Baseline Plateau [s] : 0.5

Filter Settings

Filter Width [s] : 0.5
Polynomial Order : 4

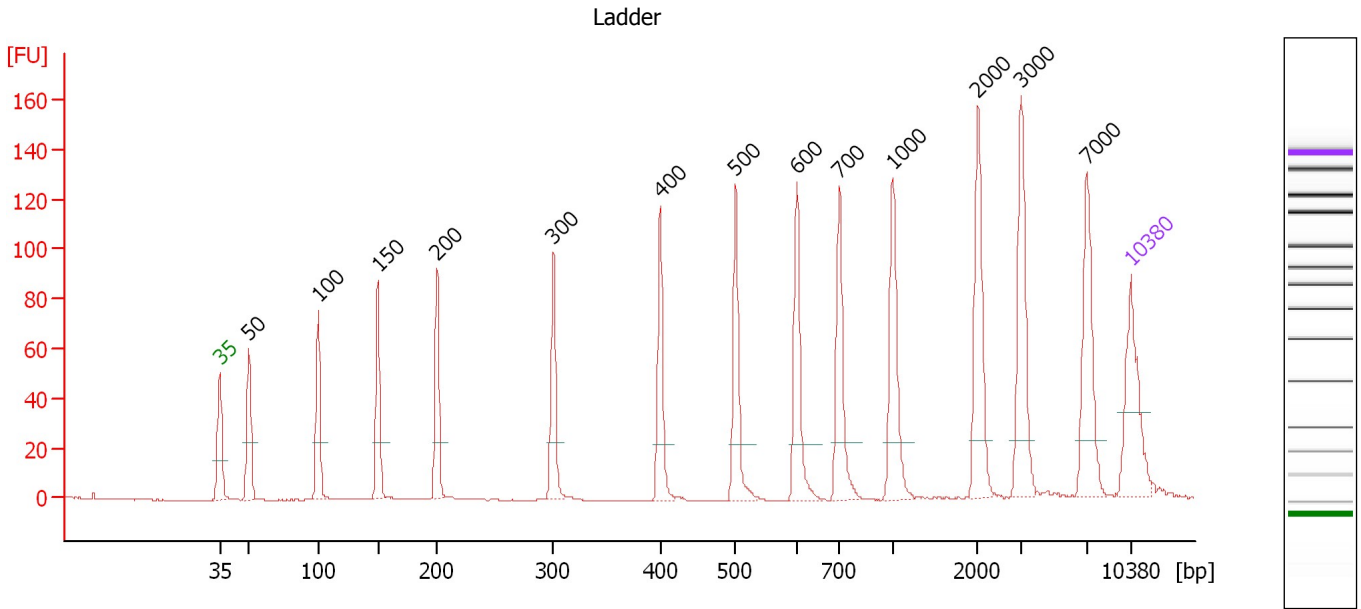
Ladder

Ladder Peak	Size	Area
1	35	160
2	50	210
3	100	208
4	150	221
5	200	242
6	300	270
7	400	305
8	500	306
9	600	336
10	700	321
11	1000	366
12	2000	413
13	3000	411
14	7000	400
15	10380	214

Assay Class: High Sensitivity DNA Assay
 Data Path: C:\...ents and Settings\Bioanalyzer\2012-06-26\2012-06-26_002.xad

Created: 6/26/2012 11:30:17 AM
 Modified: 6/26/2012 12:15:40 PM

Electropherogram Summary



Overall Results for Ladder

Noise: 0.1

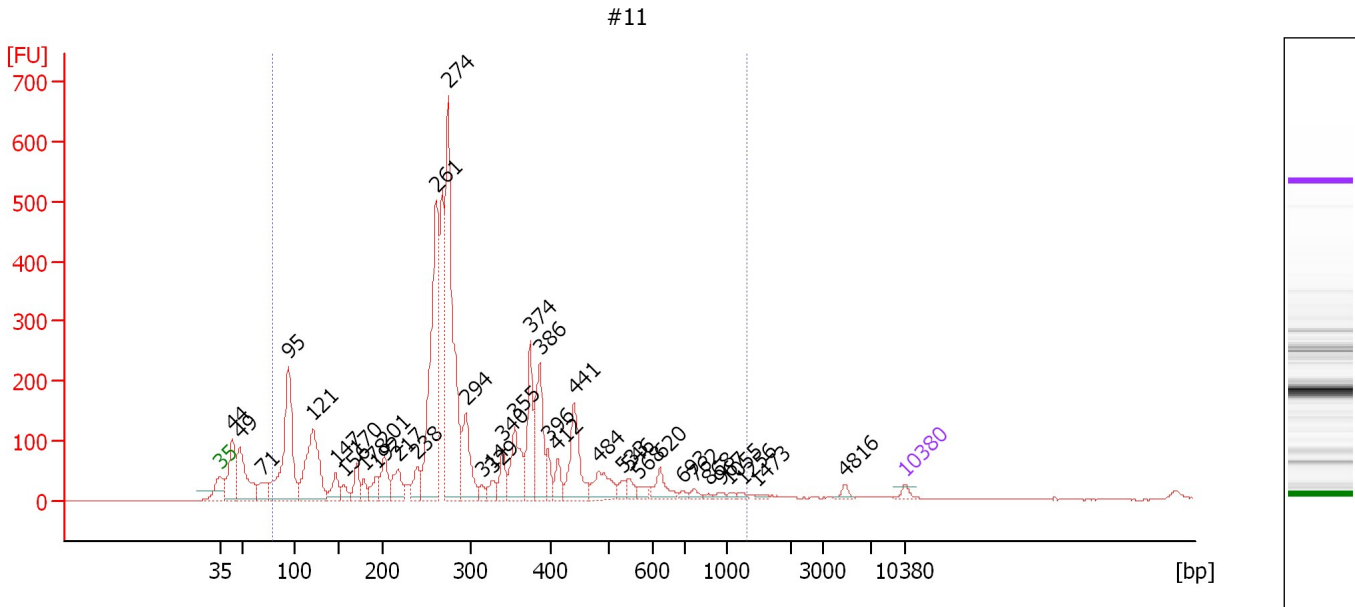
Peak table for Ladder

Peak	Size [bp]	Conc. [pg/μl]	Molarity [pmol/l]	Observations
1	35	125.00	5,411.3	Lower Marker
2	50	150.00	4,545.5	Ladder Peak
3	100	150.00	2,272.7	Ladder Peak
4	150	150.00	1,515.2	Ladder Peak
5	200	150.00	1,136.4	Ladder Peak
6	300	150.00	757.6	Ladder Peak
7	400	150.00	568.2	Ladder Peak
8	500	150.00	454.5	Ladder Peak
9	600	150.00	378.8	Ladder Peak
10	700	150.00	324.7	Ladder Peak
11	1,000	150.00	227.3	Ladder Peak
12	2,000	150.00	113.6	Ladder Peak
13	3,000	150.00	75.8	Ladder Peak
14	7,000	150.00	32.5	Ladder Peak
15	10,380	75.00	10.9	Upper Marker

Assay Class: High Sensitivity DNA Assay
 Data Path: C:\...ents and Settings\Bioanalyzer\2012-06-26\2012-06-26_002.xad

Created: 6/26/2012 11:30:17 AM
 Modified: 6/26/2012 12:15:40 PM

Electropherogram Summary Continued ...



Overall Results for sample 1 : #11

Number of peaks found: 38 Corr. Area 1: 4,657.4
 Noise: 0.3

Peak table for sample 1 : #11

Peak	Size [bp]	Conc. [pg/μl]	Molarity [pmol/l]	Observations
1	35	125.00	5,411.3	Lower Marker
2	44	1,378.87	47,809.2	
3	49	1,580.18	49,089.2	
4	71	463.43	9,923.3	
5	95	3,481.00	55,646.3	
6	121	2,492.37	31,149.2	
7	147	471.36	4,866.9	
8	156	254.15	2,473.2	
9	170	447.26	3,984.9	
10	178	218.65	1,856.6	
11	192	380.17	2,996.8	
12	201	605.09	4,556.4	
13	217	545.74	3,809.5	
14	238	462.87	2,941.8	
15	261	4,333.09	25,159.0	
16	274	5,229.12	28,877.5	
17	294	1,159.76	5,967.2	
18	314	130.07	627.8	
19	329	234.34	1,080.8	
20	340	431.11	1,922.1	
21	355	1,044.41	4,456.2	
22	374	1,112.92	4,504.1	
23	386	1,338.36	5,248.8	
24	396	315.06	1,204.5	
25	412	302.04	1,111.7	
26	441	1,177.54	4,048.8	

Assay Class: High Sensitivity DNA Assay
 Data Path: C:\...ents and Settings\Bioanalyzer\2012-06-26\2012-06-26_002.xad

Created: 6/26/2012 11:30:17 AM
 Modified: 6/26/2012 12:15:40 PM

Electropherogram Summary Continued ...

... Peak table for sample 1 : #11

Peak	Size [bp]	Conc. [pg/µl]	Molarity [pmol/l]	Observations
27	484	599.82	1,878.9	
28	533	160.13	454.9	
29	546	181.88	504.6	
30	568	150.36	400.9	
31	620	369.42	903.3	
32	693	66.98	146.5	
33	762	97.54	194.1	
34	868	37.81	66.0	
35	967	60.77	95.2	
36	1,055	41.87	60.1	
37	1,256	51.50	62.1	
38	1,473	40.94	42.1	
39	4,816	80.27	25.3	
40	▶ 10,380	75.00	10.9	Upper Marker

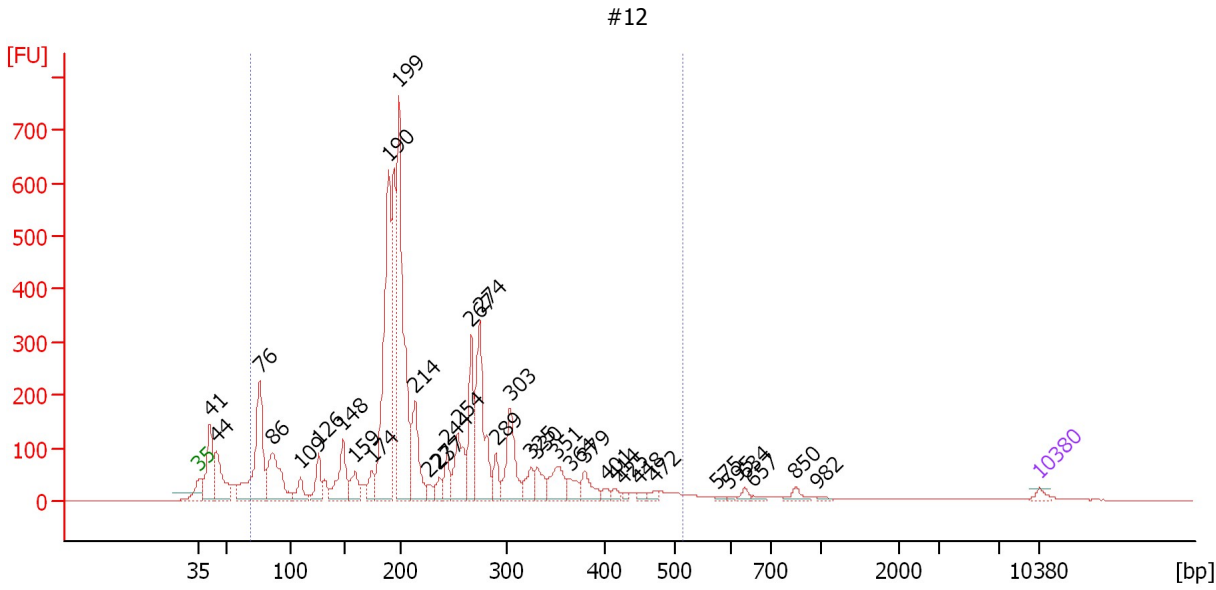
Region table for sample 1 : #11

From [bp]	To [bp]	Average Size [bp]	Molarity [pmol/l]	Conc. [pg/µl]	Corr. Area	% of Total	Size distribution in CV [%]	Color
80	1,310	306	212,558.5	30,072.10	4,657.4	90	47.6	■

Assay Class: High Sensitivity DNA Assay
 Data Path: C:\...ents and Settings\Bioanalyzer\2012-06-26\2012-06-26_002.xad

Created: 6/26/2012 11:30:17 AM
 Modified: 6/26/2012 12:15:40 PM

Electropherogram Summary Continued ...



Overall Results for sample 2 : #12

Number of peaks found: 36 Corr. Area 1: 5,288.2
 Noise: 0.3

Peak table for sample 2 : #12

Peak	Size [bp]	Conc. [pg/μl]	Molarity [pmol/l]	Observations
1	35	125.00	5,411.3	Lower Marker
2	41	1,630.90	60,395.2	
3	44	1,366.57	46,567.2	
4	76	3,184.60	63,509.4	
5	86	1,880.48	32,976.1	
6	109	454.06	6,289.2	
7	126	656.79	7,907.3	
8	148	1,198.28	12,297.7	
9	159	496.48	4,735.6	
10	174	431.62	3,748.2	
11	190	5,163.80	41,260.9	
12	199	5,693.94	43,374.0	
13	214	1,420.32	10,041.9	
14	227	191.03	1,273.8	
15	237	284.87	1,823.6	
16	244	449.84	2,791.7	
17	254	1,138.01	6,785.8	
18	267	1,369.65	7,786.0	
19	274	2,353.84	12,992.9	
20	289	416.10	2,178.4	
21	303	1,308.86	6,542.8	
22	325	396.68	1,850.5	
23	330	453.82	2,082.3	
24	351	676.51	2,921.8	
25	364	288.64	1,202.1	
26	379	425.01	1,699.1	

Assay Class: High Sensitivity DNA Assay
 Data Path: C:\...ents and Settings\Bioanalyzer\2012-06-26\2012-06-26_002.xad


Created: 6/26/2012 11:30:17 AM
 Modified: 6/26/2012 12:15:40 PM

Electropherogram Summary Continued ...

... Peak table for sample 2 : #12

Peak	Size [bp]	Conc. [pg/µl]	Molarity [pmol/l]	Observations
27	401	115.88	437.9	
28	414	110.07	402.9	
29	425	62.16	221.8	
30	448	82.41	279.0	
31	472	100.73	323.3	
32	575	38.21	100.6	
33	595	24.11	61.4	
34	634	97.99	234.1	
35	657	55.30	127.5	
36	850	141.84	253.0	
37	982	36.37	56.1	
38	10,380	75.00	10.9	Upper Marker

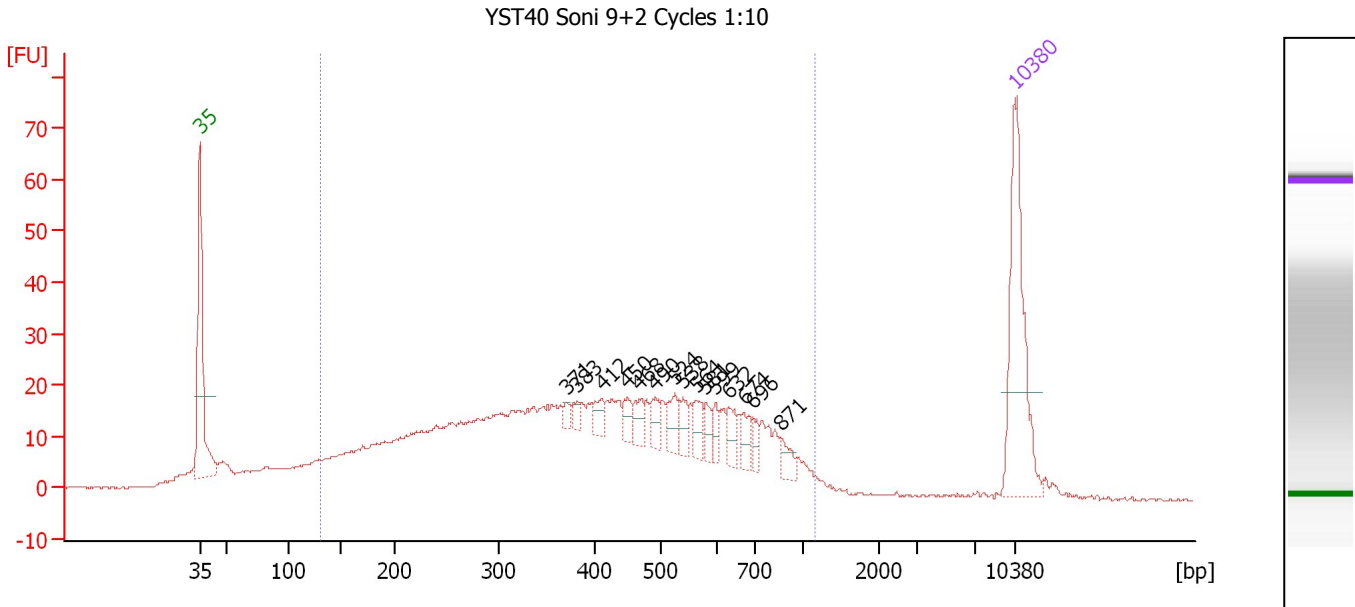
Region table for sample 2 : #12

From [bp]	To [bp]	Average Size [bp]	Molarity [pmol/l]	Conc. [pg/µl]	Corr. Area	% of Total	Size distribution in CV [%]	Color
68	513	227	289,643.8	33,527.92	5,288.2	88	37.4	

Assay Class: High Sensitivity DNA Assay
 Data Path: C:\...ents and Settings\Bioanalyzer\2012-06-26\2012-06-26_002.xad

Created: 6/26/2012 11:30:17 AM
 Modified: 6/26/2012 12:15:40 PM

Electropherogram Summary Continued ...



Overall Results for sample 3 : YST40 Soni 9+2 Cycles 1:10

Number of peaks found: 15 Corr. Area 1: 818.7
 Noise: 0.3

Peak table for sample 3 : YST40 Soni 9+2 Cycles 1:10

Peak	Size [bp]	Conc. [pg/μl]	Molarity [pmol/l]	Observations
1	35	125.00	5,411.3	Lower Marker
2	371	4.48	18.3	
3	383	6.10	24.2	
4	412	10.85	39.9	
5	450	10.17	34.3	
6	468	11.65	37.8	
7	490	11.56	35.8	
8	524	14.60	42.2	
9	538	11.30	31.8	
10	564	12.05	32.4	
11	581	8.96	23.4	
12	599	8.19	20.7	
13	632	12.50	30.0	
14	674	10.44	23.5	
15	696	7.15	15.6	
16	871	8.51	14.8	
17	10,380	75.00	10.9	Upper Marker

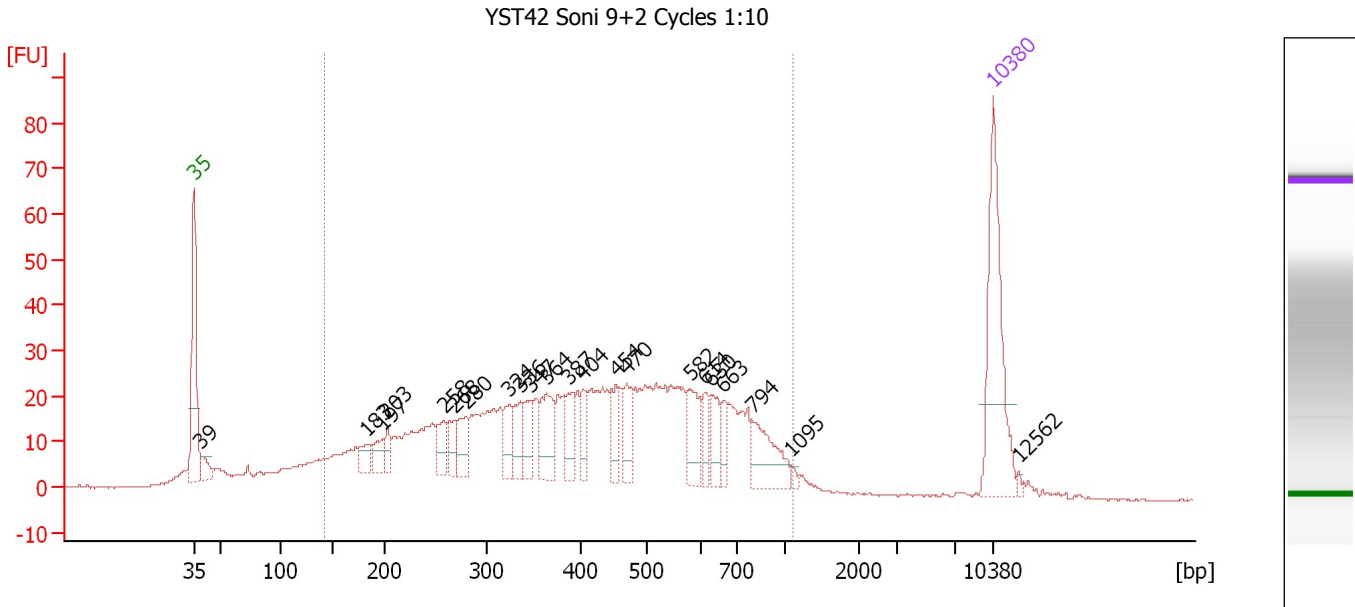
Region table for sample 3 : YST40 Soni 9+2 Cycles 1:10

From [bp]	To [bp]	Average Size [bp]	Molarity [pmol/l]	Conc. [pg/μl]	Corr. Area	% of Total	Size distribution in CV [%]	Color
131	1,172	433	4,730.2	984.45	818.7	87	44.6	Blue

Assay Class: High Sensitivity DNA Assay
 Data Path: C:\...ents and Settings\Bioanalyzer\2012-06-26\2012-06-26_002.xad

Created: 6/26/2012 11:30:17 AM
 Modified: 6/26/2012 12:15:40 PM

Electropherogram Summary Continued ...



Overall Results for sample 4 : YST42 Soni 9+2 Cycles 1:10

Number of peaks found: 22 Corr. Area 1: 965.6
 Noise: 0.2

Peak table for sample 4 : YST42 Soni 9+2 Cycles 1:10

Peak	Size [bp]	Conc. [pg/μl]	Molarity [pmol/l]	Observations
1	35	125.00	5,411.3	Lower Marker
2	39	16.01	616.5	
3	183	15.35	127.0	
4	197	14.85	114.2	
5	203	12.64	94.5	
6	258	19.97	117.2	
7	268	17.17	97.1	
8	280	23.30	126.0	
9	324	20.82	97.2	
10	336	23.55	106.2	
11	347	21.36	93.2	
12	364	35.69	148.4	
13	387	23.08	90.3	
14	404	16.83	63.1	
15	454	23.11	77.1	
16	470	22.20	71.5	
17	582	29.34	76.4	
18	614	13.60	33.5	
19	630	19.29	46.4	
20	663	12.64	28.9	
21	794	37.62	71.8	
22	1,095	2.63	3.6	
23	10,380	75.00	10.9	Upper Marker
24	12,562	0.00	0.0	

Assay Class: High Sensitivity DNA Assay
Data Path: C:\...ents and Settings\Bioanalyzer\2012-06-26\2012-06-26_002.xad

Created: 6/26/2012 11:30:17 AM
Modified: 6/26/2012 12:15:40 PM

Electropherogram Summary Continued ...

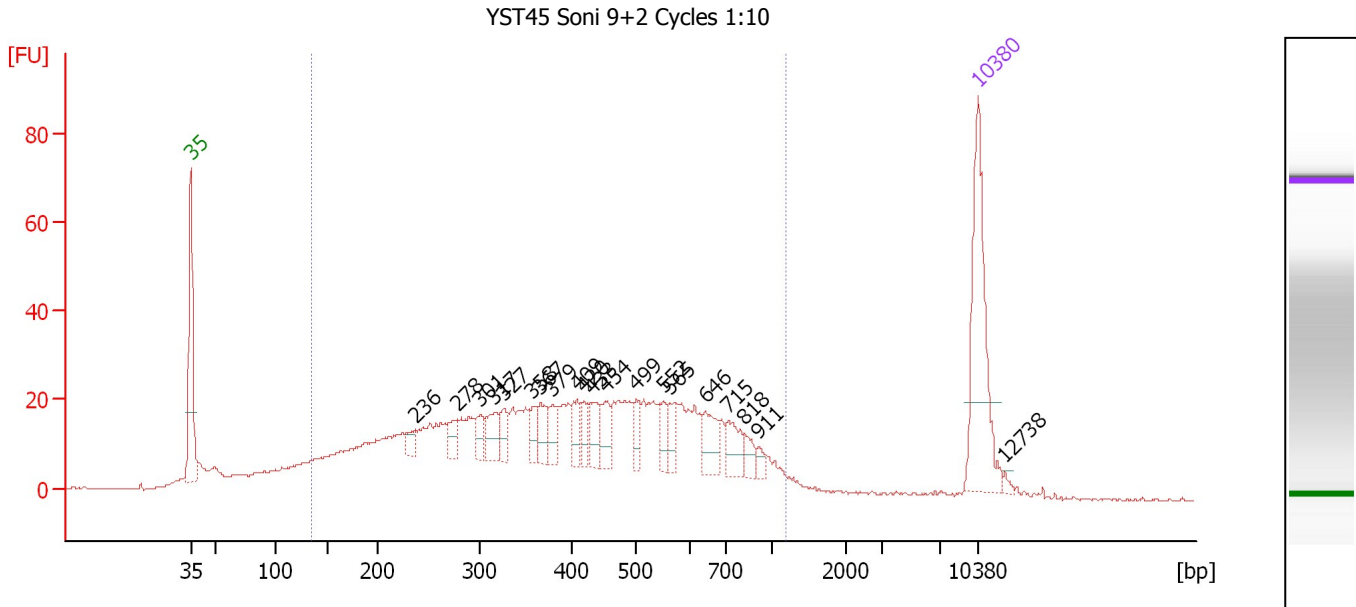
... Region table for sample 4 : YST42 Soni 9+2 Cycles 1:10

From [bp]	To [bp]	Average Size [bp]	Molarity [pmol/l]	Conc. [pg/μl]	Corr. Area	% of Total	Size distribution in CV [%]	Color
143	1,103	443	4,918.5	1,077.34	965.6	87	42.3	■

Assay Class: High Sensitivity DNA Assay
 Data Path: C:\...ents and Settings\Bioanalyzer\2012-06-26\2012-06-26_002.xad

Created: 6/26/2012 11:30:17 AM
 Modified: 6/26/2012 12:15:40 PM

Electropherogram Summary Continued ...



Overall Results for sample 5 : YST45 Soni 9+2 Cycles 1:10

Number of peaks found: 20 Corr. Area 1: 924.0
 Noise: 0.1

Peak table for sample 5 : YST45 Soni 9+2 Cycles 1:10

Peak	Size [bp]	Conc. [pg/μl]	Molarity [pmol/l]	Observations
1	35	125.00	5,411.3	Lower Marker
2	236	9.93	63.6	
3	278	13.47	73.3	
4	301	13.44	67.6	
5	317	19.52	93.3	
6	327	14.60	67.7	
7	358	12.34	52.2	
8	367	17.17	70.9	
9	379	14.99	59.9	
10	409	15.44	57.1	
11	420	11.81	42.6	
12	433	17.01	59.5	
13	454	16.95	56.6	
14	499	12.79	38.8	
15	552	10.97	30.1	
16	565	13.23	35.5	
17	646	20.95	49.2	
18	715	18.73	39.7	
19	818	9.65	17.9	
20	911	5.38	8.9	
21	10,380	75.00	10.9	Upper Marker
22	12,738	0.00	0.0	

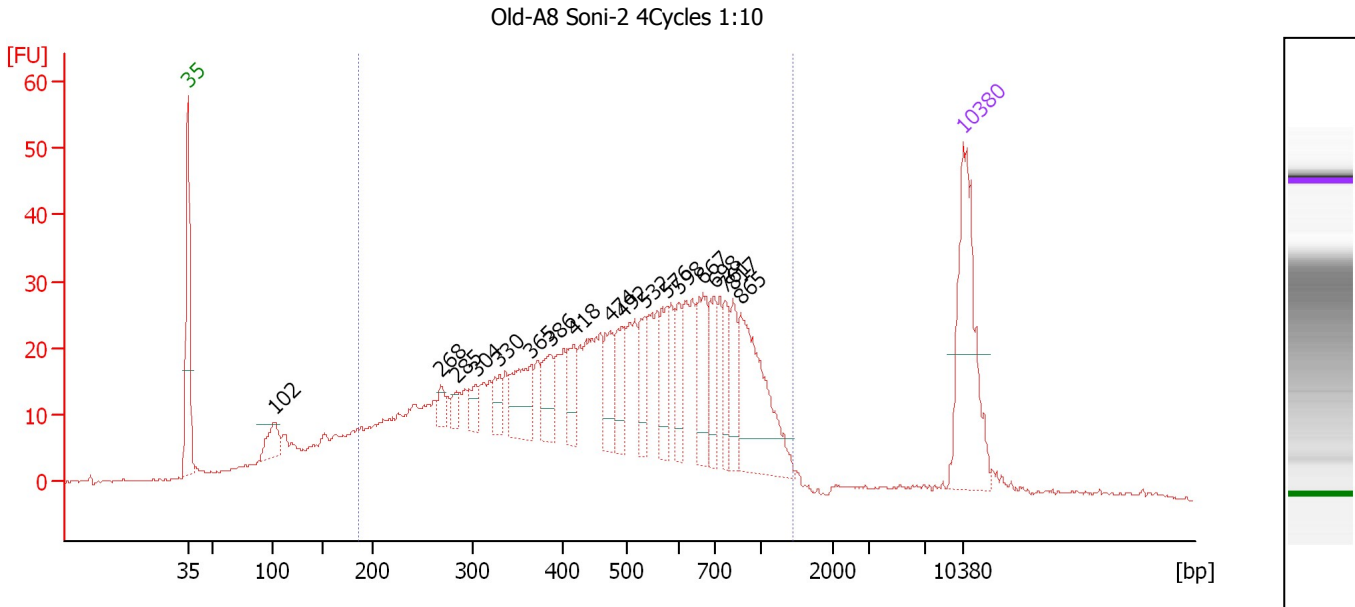
Region table for sample 5 : YST45 Soni 9+2 Cycles 1:10

From [bp]	To [bp]	Average Size [bp]	Molarity [pmol/l]	Conc. [pg/μl]	Corr. Area	% of Total	Size distribution in CV [%]	Color
135	1,181	435	4,746.7	998.79	924.0	87	44.7	Blue

Assay Class: High Sensitivity DNA Assay
 Data Path: C:\...ents and Settings\Bioanalyzer\2012-06-26\2012-06-26_002.xad

Created: 6/26/2012 11:30:17 AM
 Modified: 6/26/2012 12:15:40 PM

Electropherogram Summary Continued ...



Overall Results for sample 6 : Old-A8 Soni-2 4Cycles 1:10

Number of peaks found: 18 Corr. Area 1: 957.5
 Noise: 0.2

Peak table for sample 6 : Old-A8 Soni-2 4Cycles 1:10

Peak	Size [bp]	Conc. [pg/μl]	Molarity [pmol/l]	Observations
1	35	125.00	5,411.3	Lower Marker
2	102	24.25	358.8	
3	268	10.70	60.4	
4	285	8.21	43.7	
5	304	13.15	65.5	
6	330	14.46	66.3	
7	365	39.94	165.8	
8	386	24.17	94.9	
9	418	22.20	80.6	
10	474	28.03	89.6	
11	492	24.97	76.9	
12	532	21.74	61.9	
13	576	25.43	66.9	
14	598	19.55	49.5	
15	667	36.80	83.6	
16	698	24.25	52.7	
17	761	19.98	39.8	
18	817	23.21	43.1	
19	865	82.23	144.0	
20	10,380	75.00	10.9	Upper Marker

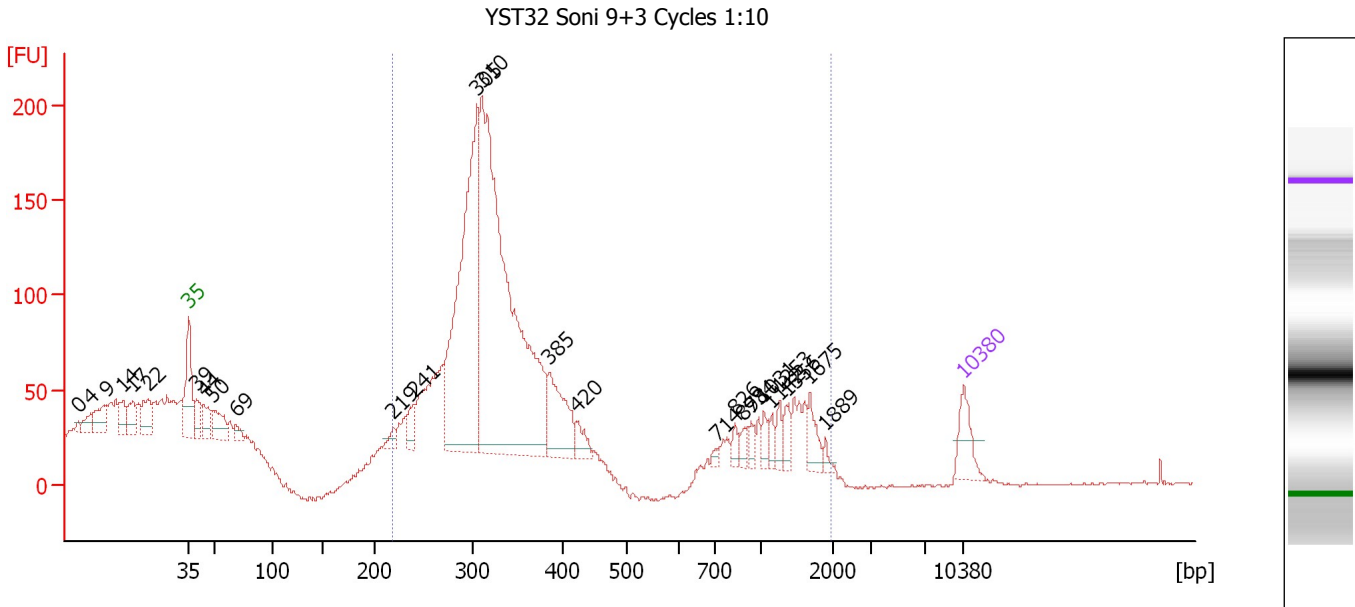
Region table for sample 6 : Old-A8 Soni-2 4Cycles 1:10

From [bp]	To [bp]	Average Size [bp]	Molarity [pmol/l]	Conc. [pg/μl]	Corr. Area	% of Total	Size distribution in CV [%]	Color
185	1,433	526	4,706.5	1,233.29	957.5	85	44.7	Blue

Assay Class: High Sensitivity DNA Assay
 Data Path: C:\...ents and Settings\Bioanalyzer\2012-06-26\2012-06-26_002.xad

Created: 6/26/2012 11:30:17 AM
 Modified: 6/26/2012 12:15:40 PM

Electropherogram Summary Continued ...



Overall Results for sample 7 : YST32 Soni 9+3 Cycles 1:10

Number of peaks found: 26 Corr. Area 1: 1,842.2
 Noise: 0.5

Peak table for sample 7 : YST32 Soni 9+3 Cycles 1:10

Peak	Size [bp]	Conc. [pg/μl]	Molarity [pmol/l]	Observations
1	0	0.00	0.0	
2	4	0.00	0.0	
3	9	0.00	0.0	
4	14	0.00	0.0	
5	17	0.00	0.0	
6	22	0.00	0.0	
7	35	125.00	5,411.3	Lower Marker
8	39	81.95	3,144.3	
9	44	87.79	3,024.2	
10	50	119.56	3,640.9	
11	69	31.78	701.3	
12	219	30.19	208.4	
13	241	61.08	384.8	
14	305	1,056.21	5,244.2	
15	310	1,839.22	8,976.3	
16	385	212.60	836.4	
17	420	48.48	174.7	
18	714	13.58	28.8	
19	826	28.03	51.4	
20	878	26.12	45.1	
21	934	26.67	43.2	
22	1,031	28.14	41.3	
23	1,142	26.35	35.0	
24	1,253	30.16	36.5	
25	1,356	38.58	43.1	
26	1,675	53.34	48.3	

Assay Class: High Sensitivity DNA Assay
 Data Path: C:\...ents and Settings\Bioanalyzer\2012-06-26\2012-06-26_002.xad


Created: 6/26/2012 11:30:17 AM
 Modified: 6/26/2012 12:15:40 PM

Electropherogram Summary Continued ...

... Peak table for sample 7 : YST32 Soni 9+3 Cycles 1:10

Peak	Size [bp]	Conc. [pg/μl]	Molarity [pmol/l]	Observations
27	1,889	14.76	11.8	
28	10,380	75.00	10.9	Upper Marker

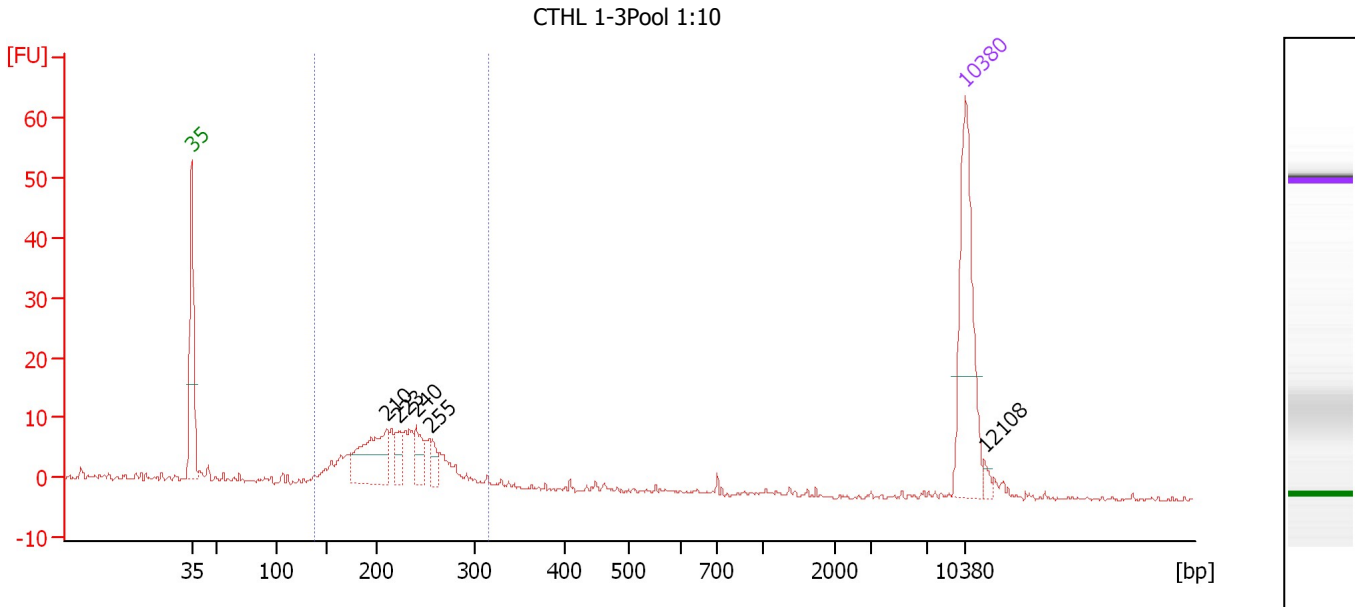
Region table for sample 7 : YST32 Soni 9+3 Cycles 1:10

From [bp]	To [bp]	Average Size [bp]	Molarity [pmol/l]	Conc. [pg/μl]	Corr. Area	% of Total	Size distribution in CV [%]	Color
219	1,961	471	16,923.1	3,756.37	1,842.2	80	79.7	

Assay Class: High Sensitivity DNA Assay
 Data Path: C:\...ents and Settings\Bioanalyzer\2012-06-26\2012-06-26_002.xad

Created: 6/26/2012 11:30:17 AM
 Modified: 6/26/2012 12:15:40 PM

Electropherogram Summary Continued ...



Overall Results for sample 8 : CTHL 1-3Pool 1:10

Number of peaks found: 5 Corr. Area 1: 135.5
 Noise: 0.4

Peak table for sample 8 : CTHL 1-3Pool 1:10

Peak	Size [bp]	Conc. [pg/μl]	Molarity [pmol/l]	Observations
1	35	125.00	5,411.3	Lower Marker
2	210	66.96	482.7	
3	223	14.65	99.7	
4	240	19.87	125.2	
5	255	13.34	79.3	
6	10,380	75.00	10.9	Upper Marker
7	12,108	0.00	0.0	

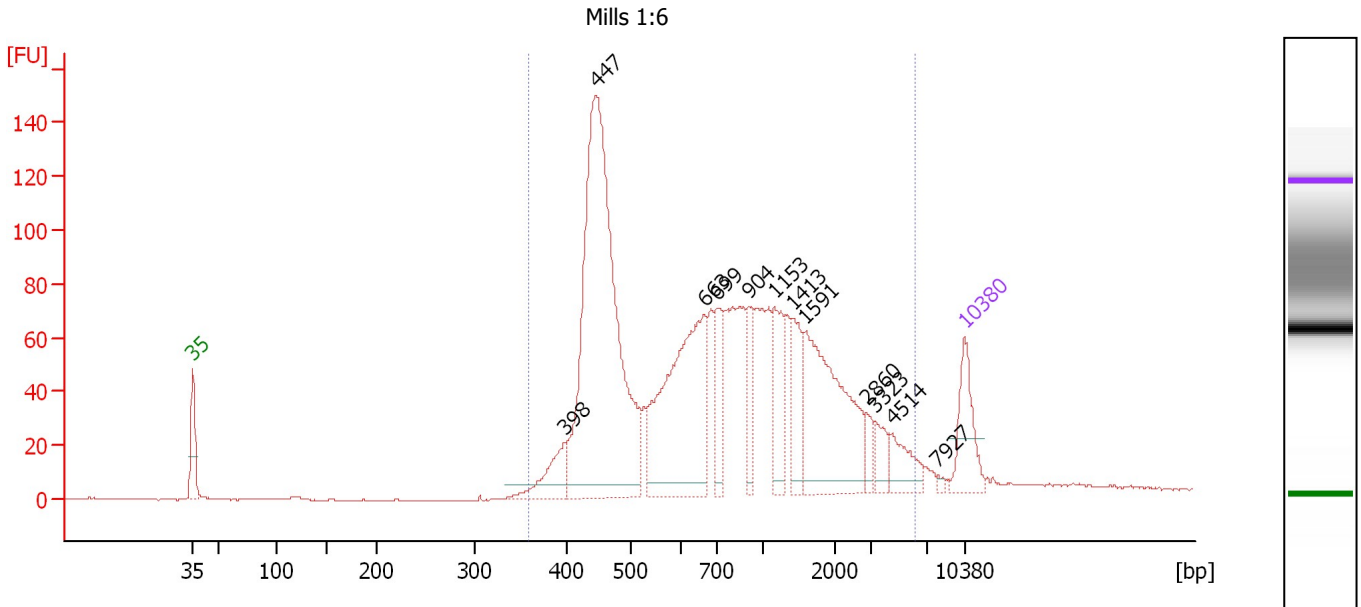
Region table for sample 8 : CTHL 1-3Pool 1:10

From [bp]	To [bp]	Average Size [bp]	Molarity [pmol/l]	Conc. [pg/μl]	Corr. Area	% of Total	Size distribution in CV [%]	Color
138	315	220	1,587.1	222.60	135.5	79	16.8	Blue

Assay Class: High Sensitivity DNA Assay
 Data Path: C:\...ents and Settings\Bioanalyzer\2012-06-26\2012-06-26_002.xad

Created: 6/26/2012 11:30:17 AM
 Modified: 6/26/2012 12:15:40 PM

Electropherogram Summary Continued ...



Overall Results for sample 9 : Mills 1:6

Number of peaks found: 12 Corr. Area 1: 1,974.5
 Noise: 0.2

Peak table for sample 9 : Mills 1:6

Peak	Size [bp]	Conc. [pg/μl]	Molarity [pmol/l]	Observations
1	35	125.00	5,411.3	Lower Marker
2	398	79.57	302.9	
3	447	931.31	3,156.0	
4	663	418.29	955.5	
5	699	86.57	187.7	
6	904	59.19	99.2	
7	1,153	93.90	123.4	
8	1,413	76.06	81.6	
9	1,591	282.34	268.8	
10	2,860	21.53	11.4	
11	3,323	31.23	14.2	
12	4,514	49.97	16.8	
13	7,927	4.80	0.9	
14	10,380	75.00	10.9	Upper Marker

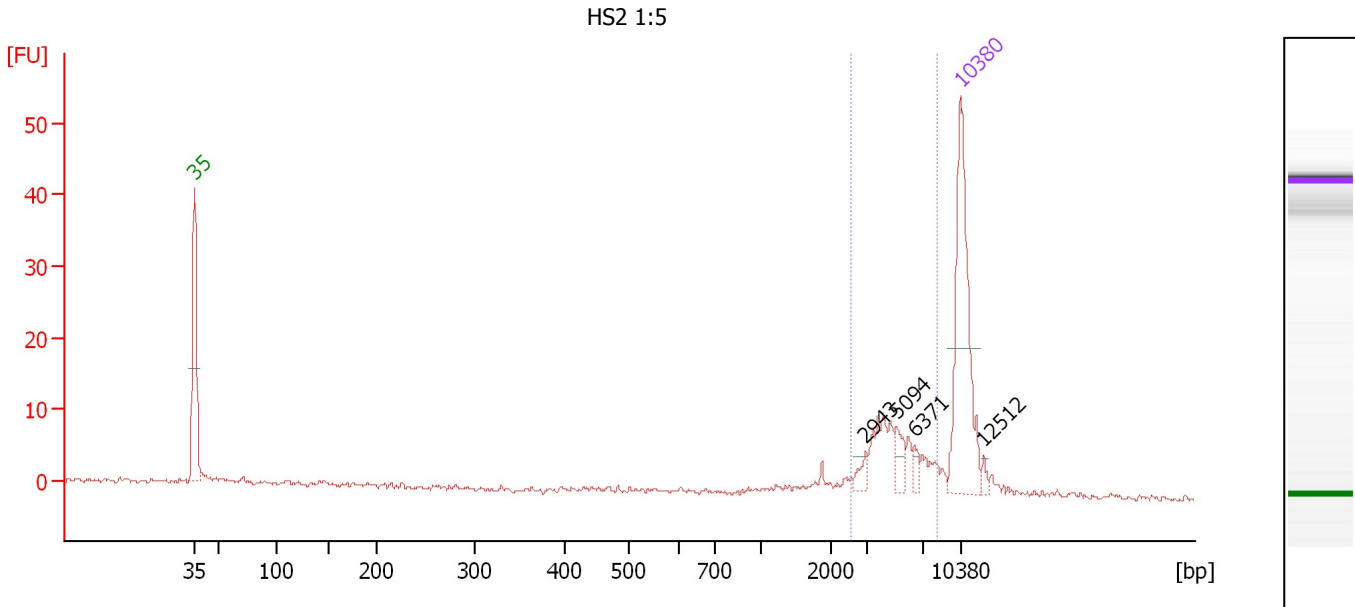
Region table for sample 9 : Mills 1:6

From [bp]	To [bp]	Average Size [bp]	Molarity [pmol/l]	Conc. [pg/μl]	Corr. Area	% of Total	Size distribution in CV [%]	Color
358	6,205	1,081	5,902.1	2,566.18	1,974.5	98	87.1	Blue

Assay Class: High Sensitivity DNA Assay
 Data Path: C:\...ents and Settings\Bioanalyzer\2012-06-26\2012-06-26_002.xad

Created: 6/26/2012 11:30:17 AM
 Modified: 6/26/2012 12:15:40 PM

Electropherogram Summary Continued ...



Overall Results for sample 10 : HS2 1:5

Number of peaks found: 4 Corr. Area 1: 47.5
 Noise: 0.4

Peak table for sample 10 : HS2 1:5

Peak	Size [bp]	Conc. [pg/μl]	Molarity [pmol/l]	Observations
1	35	125.00	5,411.3	Lower Marker
2	2,943	5.77	3.0	
3	5,094	9.56	2.8	
4	6,371	4.54	1.1	
5	10,380	75.00	10.9	Upper Marker
6	12,512	0.00	0.0	

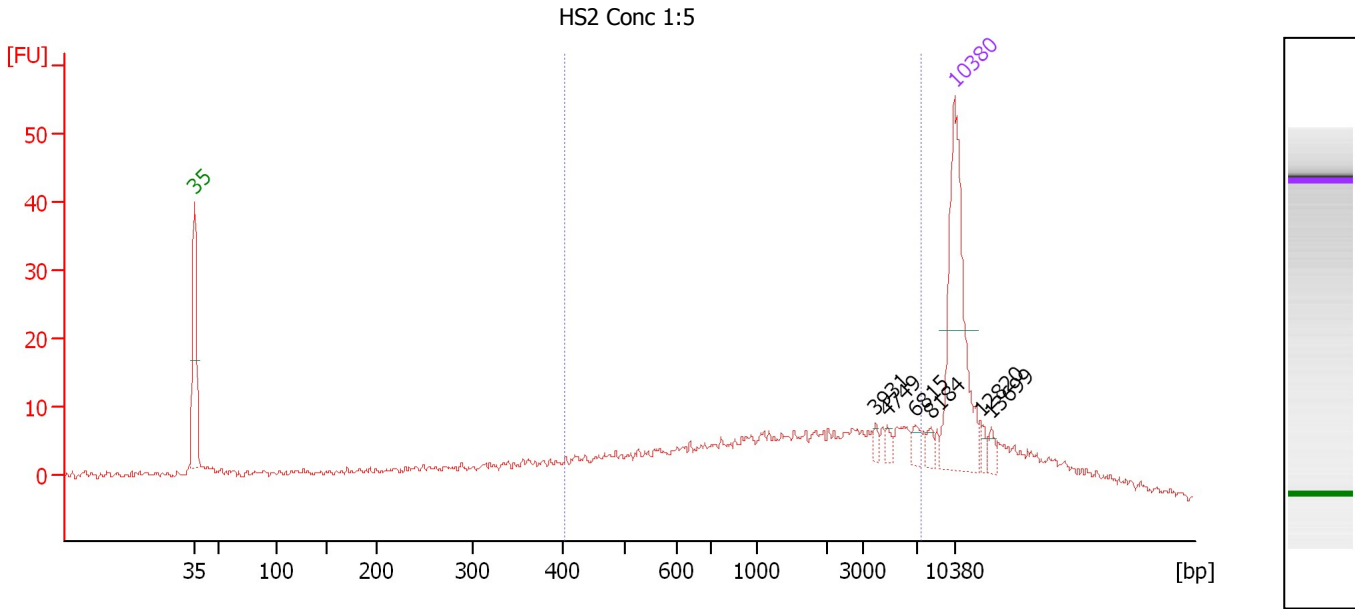
Region table for sample 10 : HS2 1:5

From [bp]	To [bp]	Average Size [bp]	Molarity [pmol/l]	Conc. [pg/μl]	Corr. Area	% of Total	Size distribution in CV [%]	Color
2,542	8,318	4,935	18.9	58.31	47.5	64	30.1	Blue

Assay Class: High Sensitivity DNA Assay
 Data Path: C:\...ents and Settings\Bioanalyzer\2012-06-26\2012-06-26_002.xad

Created: 6/26/2012 11:30:17 AM
 Modified: 6/26/2012 12:15:40 PM

Electropherogram Summary Continued ...



Overall Results for sample 11 : HS2 Conc 1:5

Number of peaks found: 6 Corr. Area 1: 231.8
 Noise: 0.5

Peak table for sample 11 : HS2 Conc 1:5

Peak	Size [bp]	Conc. [pg/μl]	Molarity [pmol/l]	Observations
1	35	125.00	5,411.3	Lower Marker
2	3,931	3.06	1.2	
3	4,749	2.87	0.9	
4	6,815	5.08	1.1	
5	8,184	4.43	0.8	
6	10,380	75.00	10.9	Upper Marker
7	12,820	0.00	0.0	
8	13,699	0.00	0.0	

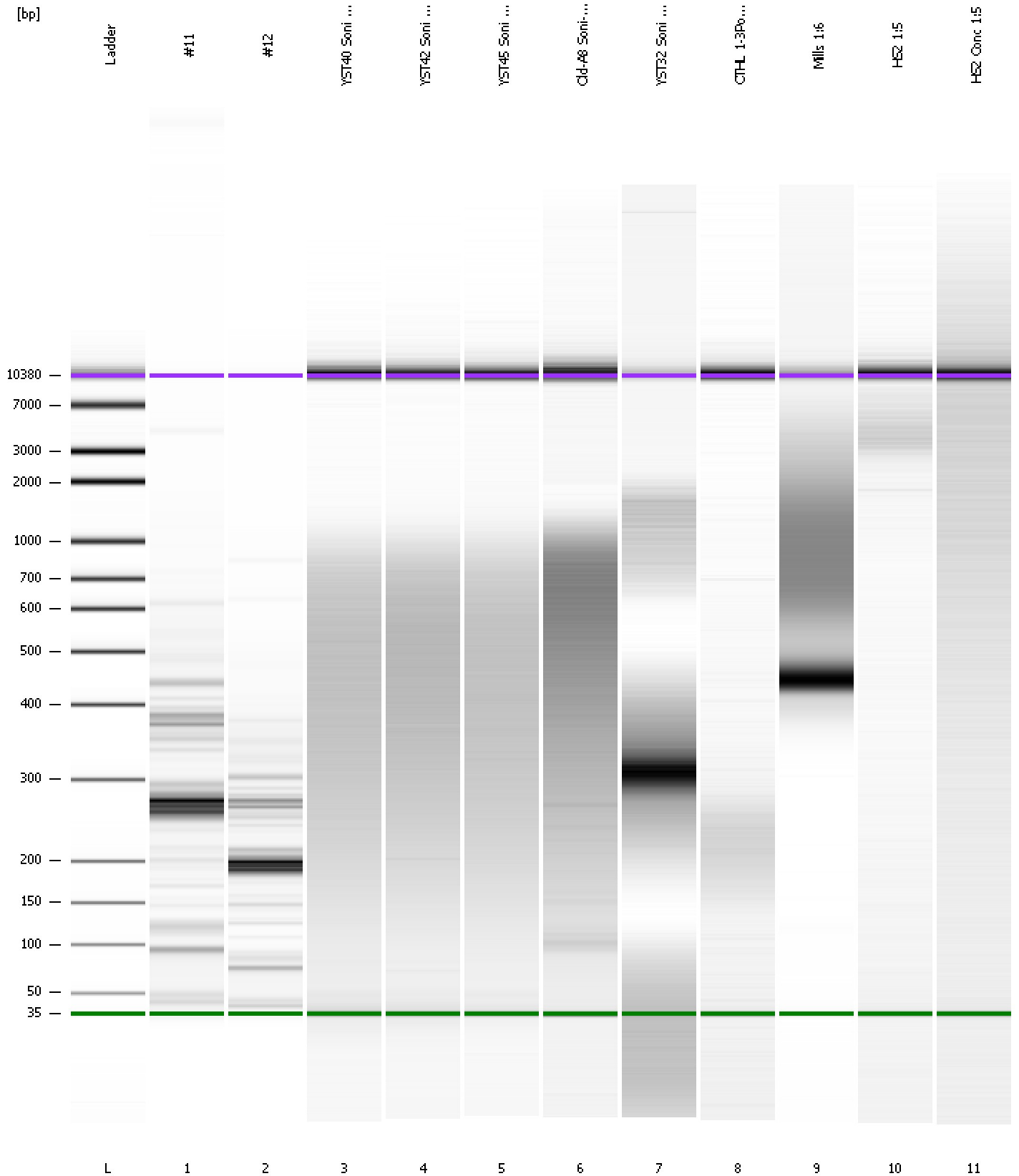
Region table for sample 11 : HS2 Conc 1:5

From [bp]	To [bp]	Average Size [bp]	Molarity [pmol/l]	Conc. [pg/μl]	Corr. Area	% of Total	Size distribution in CV [%]	Color
406	7,319	2,058	439.2	265.97	231.8	56	89.5	Blue

Assay Class: High Sensitivity DNA Assay
Data Path: C:\...ents and Settings\Bioanalyzer\2012-06-26\2012-06-26_002.xad

Created: 6/26/2012 11:30:17 AM
Modified: 6/26/2012 12:15:40 PM

Gel Image



Assay Class: High Sensitivity DNA Assay
 Data Path: C:\...ents and Settings\Bioanalyzer\2012-06-26\2012-06-26_002.xad

Created: 6/26/2012 11:30:17 AM
 Modified: 6/26/2012 12:15:40 PM

Run Logbook

Description	Number	Source	Category	Sub Category	Time	Time Zone	User	Host
Run ended on port 1 (Number of wells acquired: 12)		Instrument	Run		6/26/2012 12:11:30 PM	(GMT --07:00) Pacific Standard Time	UC Davis	D8XSMGH1
Run started on port 1 (File: C:\Documents and Settings\Bioanalyzer\2012-06-26\2012-06-26_002.xad)		Instrument	Run		6/26/2012 11:30:17 AM	(GMT --07:00) Pacific Standard Time	UC Davis	D8XSMGH1
Product Number : G2938B		Instrument	Run		6/26/2012 11:30:17 AM	(GMT --07:00) Pacific Standard Time	UC Davis	D8XSMGH1
Name :		Instrument	Run		6/26/2012 11:30:17 AM	(GMT --07:00) Pacific Standard Time	UC Davis	D8XSMGH1
Vendor : Agilent Technologies		Instrument	Run		6/26/2012 11:30:17 AM	(GMT --07:00) Pacific Standard Time	UC Davis	D8XSMGH1
Serial# : DE13701086		Instrument	Run		6/26/2012 11:30:17 AM	(GMT --07:00) Pacific Standard Time	UC Davis	D8XSMGH1
Firmware : C.01.069		Instrument	Run		6/26/2012 11:30:17 AM	(GMT --07:00) Pacific Standard Time	UC Davis	D8XSMGH1
Cartridge : Electrode		Instrument	Run		6/26/2012 11:30:17 AM	(GMT --07:00) Pacific Standard Time	UC Davis	D8XSMGH1