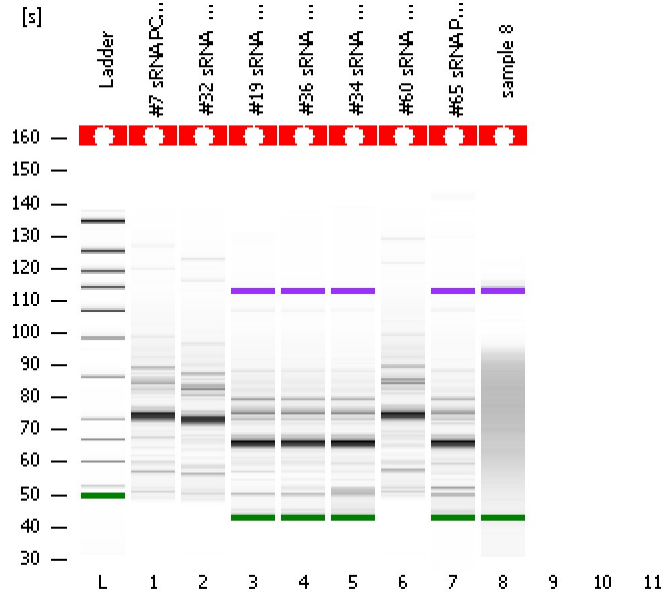


Assay Class: High Sensitivity DNA Assay  
Data Path: C:\...ents and Settings\Bioanalyzer\2012-06-26\2012-06-26\_004.xad

Created: 6/26/2012 3:05:46 PM  
Modified: 6/26/2012 3:38:33 PM

**Electrophoresis File Run Summary**



Instrument Information:

Instrument Name: DE13701086      Firmware: C.01.069  
Serial#: DE13701086      Type: G2938B

Assay Information:

Assay Origin Path: C:\Program Files\Agilent\2100 bioanalyzer\2100 expert\assays\dsDNA\High Sensitivity DNA.xsy  
Assay Class: High Sensitivity DNA Assay  
Version: 1.03  
Assay Comments: Copyright © 2003-2010 Agilent Technologies

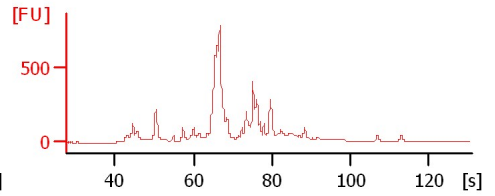
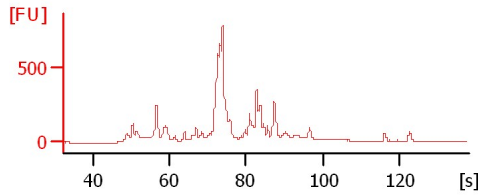
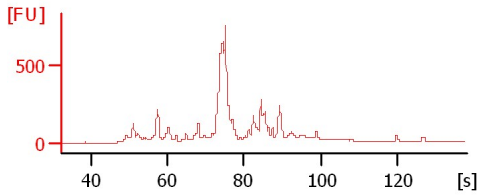
Chip Information:

Chip Lot #:   
Reagent Kit Lot #:   
Chip Comments:

#7 sRNA PCR (6/25/12) 15 cyc

#32 sRNA PCR (6/25/12) 15 cyc

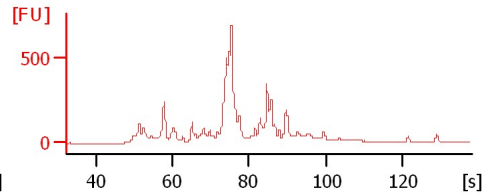
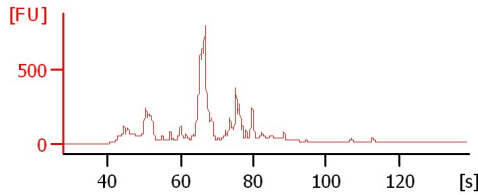
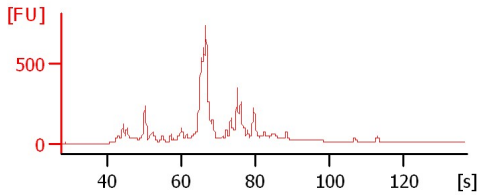
#19 sRNA PCR (6/25/12) 15 cyc



#36 sRNA PCR (6/25/12) 15 cyc

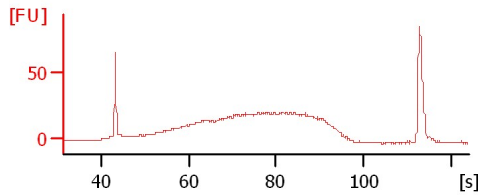
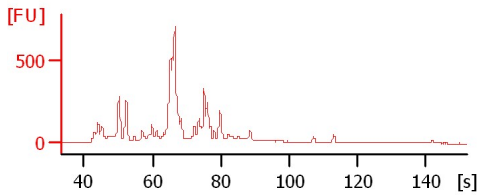
#34 sRNA PCR (6/25/12) 15 cyc

#60 sRNA PCR (6/25/12) 15 cyc



#65 sRNA PCR (6/25/12) 15 cyc

sample 8



Assay Class: High Sensitivity DNA Assay  
 Data Path: C:\...ents and Settings\Bioanalyzer\2012-06-26\2012-06-26\_004.xad

Created: 6/26/2012 3:05:46 PM  
 Modified: 6/26/2012 3:38:33 PM

**Electrophoresis File Run Summary (Chip Summary)**

Sample Name	Sample Comment	Rest. Digest	Status	Observation	Result Label	Result Color
#7 sRNA PCR (6/25/12) 15 cyc		<input type="checkbox"/>	✓			
#32 sRNA PCR (6/25/12) 15 cyc		<input type="checkbox"/>	✓			
#19 sRNA PCR (6/25/12) 15 cyc		<input type="checkbox"/>	✓			
#36 sRNA PCR (6/25/12) 15 cyc		<input type="checkbox"/>	✓			
#34 sRNA PCR (6/25/12) 15 cyc		<input type="checkbox"/>	✓			
#60 sRNA PCR (6/25/12) 15 cyc		<input type="checkbox"/>	✓			
#65 sRNA PCR (6/25/12) 15 cyc		<input type="checkbox"/>	✓			
sample 8		<input type="checkbox"/>	✓			
		<input type="checkbox"/>				
		<input type="checkbox"/>				
		<input type="checkbox"/>				
Ladder		<input type="checkbox"/>	✓			

**Chip Lot #**

**Reagent Kit Lot #**

**Chip Comments :**

Assay Class: High Sensitivity DNA Assay  
Data Path: C:\...ents and Settings\Bioanalyzer\2012-06-26\2012-06-26\_004.xad

Created: 6/26/2012 3:05:46 PM  
Modified: 6/26/2012 3:38:33 PM

**Electrophoresis Assay Details**

**General Analysis Settings**

Number of Available Sample and Ladder Wells (Max.) : 12  
Minimum Visible Range [s] : 32  
Maximum Visible Range [s] : 138  
Start Analysis Time Range [s] : 33  
End Analysis Time Range [s] : 137.5  
Ladder Concentration [pg/μl] : 1950  
Uses Standard Area for Ladder Fragments  
Lower Marker Concentration [pg/μl] : 125  
Upper Marker Concentration [pg/μl] : 75  
Used Upper Marker for Quantitation  
Standard Curve Fit is Point to Point  
Show Data Aligned to Lower and Upper Marker

**Integrator Settings**

Integration Start Time [s] : 33.05  
Integration End Time [s] : 137  
Slope Threshold : 0.8  
Height Threshold [FU] : 5  
Area Threshold : 0.1  
Width Threshold [s] : 0.6  
Baseline Plateau [s] : 0.5

**Filter Settings**

Filter Width [s] : 0.5  
Polynomial Order : 4

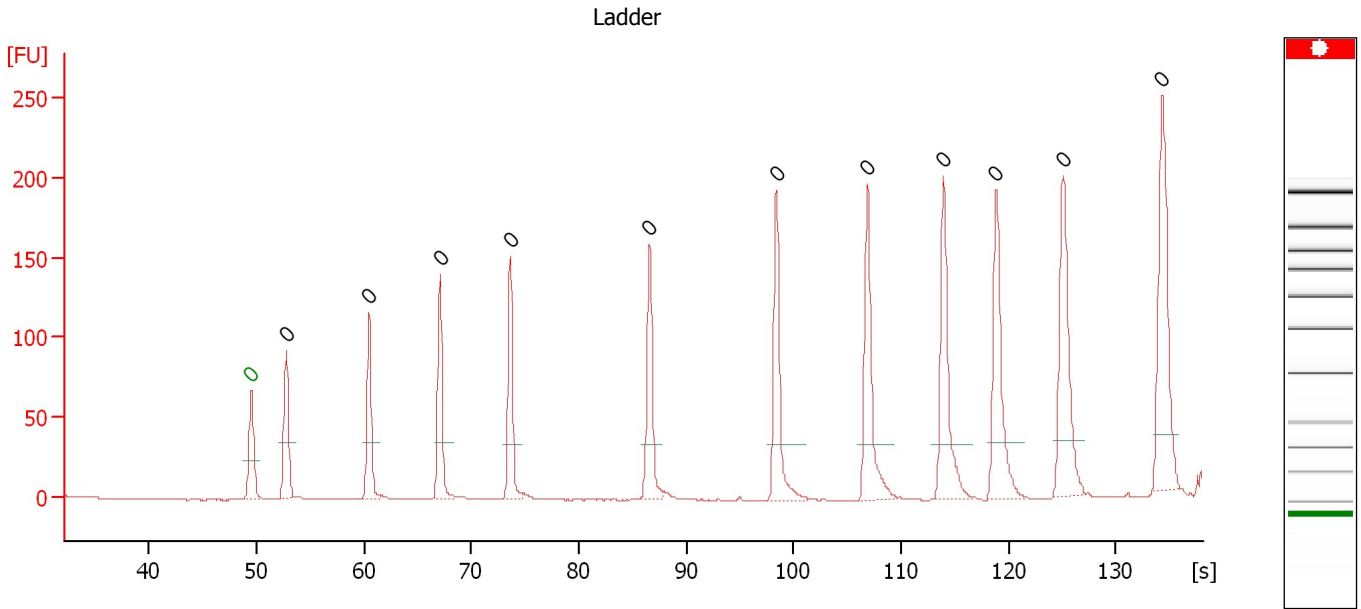
**Ladder**

Ladder Peak	Size	Area
1	35	160
2	50	210
3	100	208
4	150	221
5	200	242
6	300	270
7	400	305
8	500	306
9	600	336
10	700	321
11	1000	366
12	2000	413
13	3000	411
14	7000	400
15	10380	214

Assay Class: High Sensitivity DNA Assay  
 Data Path: C:\...ents and Settings\Bioanalyzer\2012-06-26\2012-06-26\_004.xad

Created: 6/26/2012 3:05:46 PM  
 Modified: 6/26/2012 3:38:33 PM

**Electropherogram Summary**



**Overall Results for Ladder**

Noise: 0.2

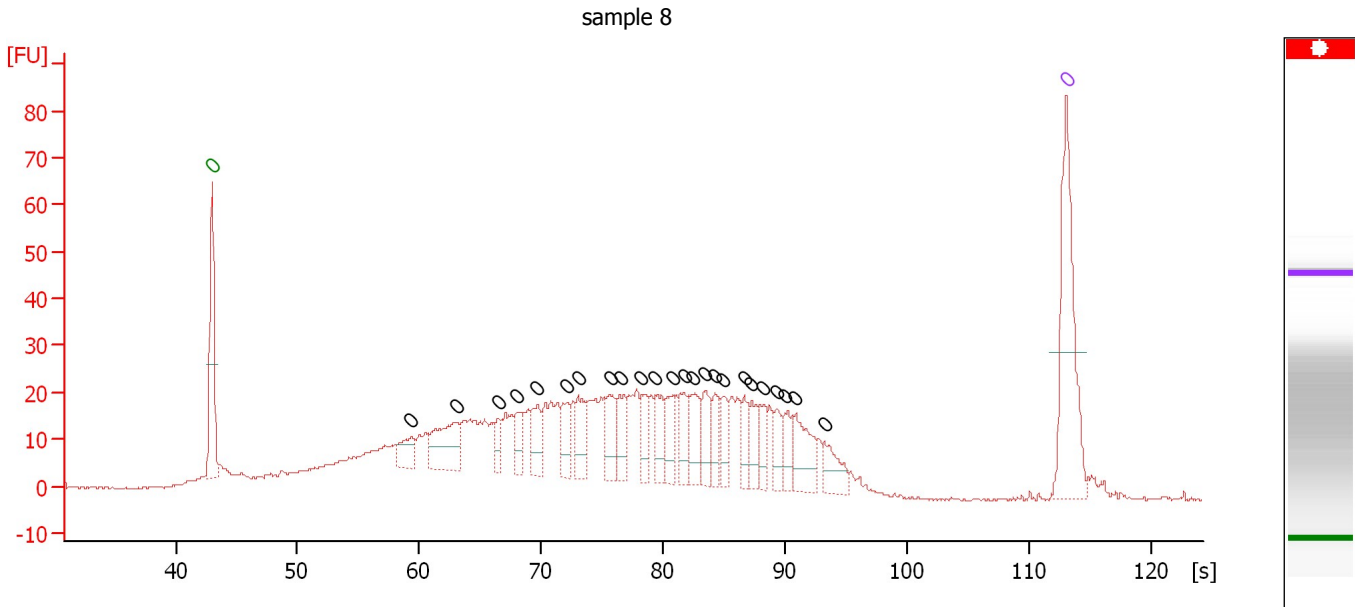
**Peak table for Ladder**

Peak	Size [bp]	Conc. [pg/μl]	Molarity [pmol/l]	Observations
1	0	0.00	0.0	Lower Marker
2	0	0.00	0.0	Ladder Peak
3	0	0.00	0.0	Ladder Peak
4	0	0.00	0.0	Ladder Peak
5	0	0.00	0.0	Ladder Peak
6	0	0.00	0.0	Ladder Peak
7	0	0.00	0.0	Ladder Peak
8	0	0.00	0.0	Ladder Peak
9	0	0.00	0.0	Ladder Peak
10	0	0.00	0.0	Ladder Peak
11	0	0.00	0.0	Ladder Peak
12	0	0.00	0.0	Ladder Peak

Assay Class: High Sensitivity DNA Assay  
 Data Path: C:\...ents and Settings\Bioanalyzer\2012-06-26\2012-06-26\_004.xad

Created: 6/26/2012 3:05:46 PM  
 Modified: 6/26/2012 3:38:33 PM

**Electropherogram Summary Continued ...**



**Overall Results for sample 8 : sample 8**

Number of peaks found: 24                      Noise: 0.2

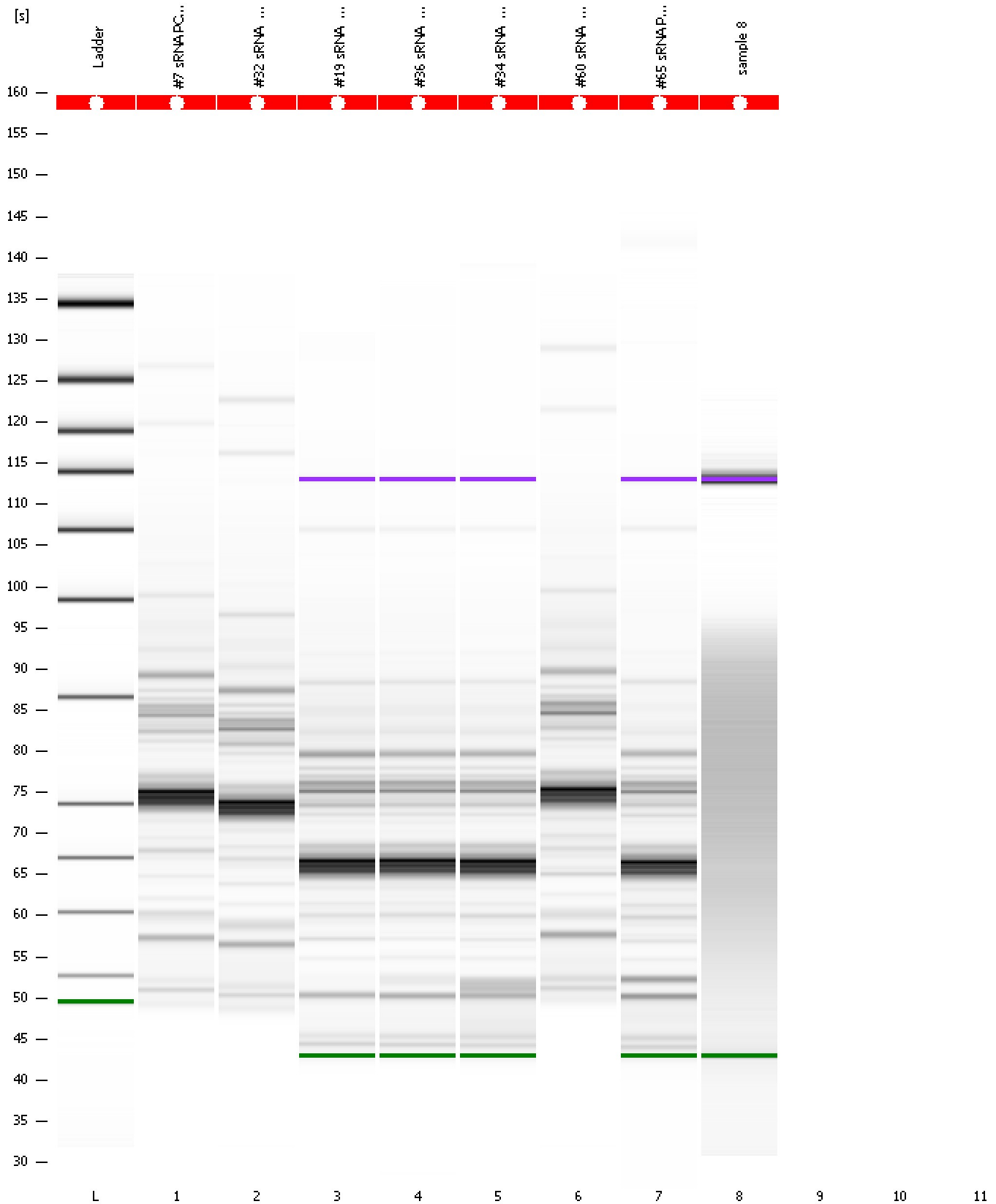
**Peak table for sample 8 : sample 8**

Peak	Size [bp]	Conc. [pg/μl]	Molarity [pmol/l]	Observations
1	0	0.00	0.0	Lower Marker
2	0	0.00	0.0	
3	0	0.00	0.0	
4	0	0.00	0.0	
5	0	0.00	0.0	
6	0	0.00	0.0	
7	0	0.00	0.0	
8	0	0.00	0.0	
9	0	0.00	0.0	
10	0	0.00	0.0	
11	0	0.00	0.0	
12	0	0.00	0.0	
13	0	0.00	0.0	
14	0	0.00	0.0	
15	0	0.00	0.0	
16	0	0.00	0.0	
17	0	0.00	0.0	
18	0	0.00	0.0	
19	0	0.00	0.0	
20	0	0.00	0.0	
21	0	0.00	0.0	
22	0	0.00	0.0	
23	0	0.00	0.0	
24	0	0.00	0.0	
25	0	0.00	0.0	
26	0	0.00	0.0	Upper Marker

Assay Class: High Sensitivity DNA Assay  
Data Path: C:\...ents and Settings\Bioanalyzer\2012-06-26\2012-06-26\_004.xad

Created: 6/26/2012 3:05:46 PM  
Modified: 6/26/2012 3:38:33 PM

**Gel Image**



Assay Class: High Sensitivity DNA Assay  
 Data Path: C:\...ents and Settings\Bioanalyzer\2012-06-26\2012-06-26\_004.xad

Created: 6/26/2012 3:05:46 PM  
 Modified: 6/26/2012 3:38:33 PM

**Run Logbook**

Description	Number	Source	Category	Sub Category	Time	Time Zone	User	Host
Run ended on port 1 (Number of wells acquired: 9)		Instrument	Run		6/26/2012 3:38:30 PM	(GMT --07:00) Pacific Standard Time	UC Davis	D8XSMGH1
Run started on port 1 (File: C:\Documents and Settings\Bioanalyzer\2012-06-26\2012-06-26_004.xad)		Instrument	Run		6/26/2012 3:05:52 PM	(GMT --07:00) Pacific Standard Time	UC Davis	D8XSMGH1
Product Number : G2938B		Instrument	Run		6/26/2012 3:05:52 PM	(GMT --07:00) Pacific Standard Time	UC Davis	D8XSMGH1
Name :		Instrument	Run		6/26/2012 3:05:52 PM	(GMT --07:00) Pacific Standard Time	UC Davis	D8XSMGH1
Vendor : Agilent Technologies		Instrument	Run		6/26/2012 3:05:52 PM	(GMT --07:00) Pacific Standard Time	UC Davis	D8XSMGH1
Serial# : DE13701086		Instrument	Run		6/26/2012 3:05:52 PM	(GMT --07:00) Pacific Standard Time	UC Davis	D8XSMGH1
Firmware : C.01.069		Instrument	Run		6/26/2012 3:05:52 PM	(GMT --07:00) Pacific Standard Time	UC Davis	D8XSMGH1
Cartridge : Electrode		Instrument	Run		6/26/2012 3:05:52 PM	(GMT --07:00) Pacific Standard Time	UC Davis	D8XSMGH1