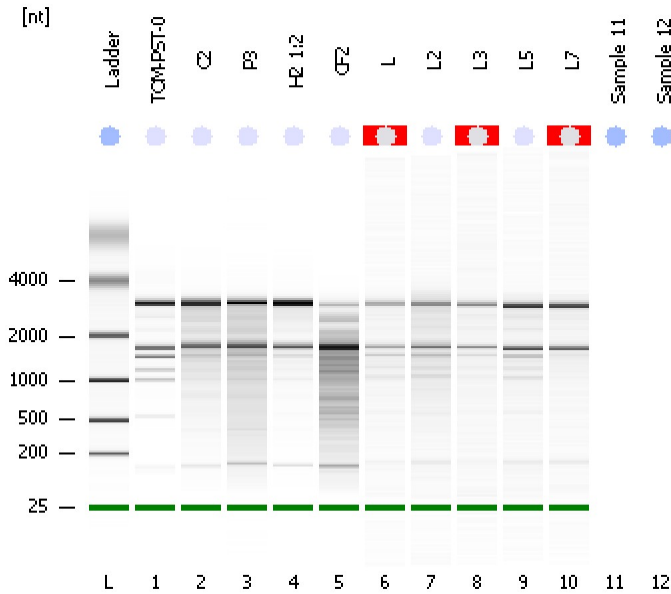


Assay Class: Eukaryote Total RNA Nano
Data Path: C:\...ents and Settings\Bioanalyzer\2012-06-26\2012-06-26_005.xad

Created: 6/26/2012 4:36:24 PM
Modified: 6/26/2012 5:02:42 PM

Electrophoresis File Run Summary



Instrument Information:

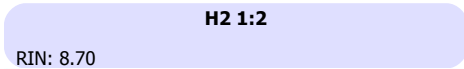
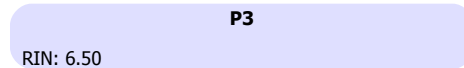
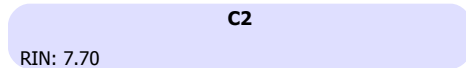
Instrument Name: DE13701086 Firmware: C.01.069
Serial#: DE13701086 Type: G2938B

Assay Information:

Assay Origin Path: C:\Program Files\Agilent\2100 bioanalyzer\2100 expert\assays\RNA\Eukaryote Total RNA Nano Series II.xsy
Assay Class: Eukaryote Total RNA Nano
Version: 2.6
Assay Comments: Total RNA Analysis ng sensitivity (Eukaryote)
© Copyright 2003 - 2009 Agilent Technologies, Inc.

Chip Information:

Chip Lot #:
Reagent Kit Lot #:
Chip Comments:



Assay Class: Eukaryote Total RNA Nano
 Data Path: C:\...ents and Settings\Bioanalyzer\2012-06-26\2012-06-26_005.xad

Created: 6/26/2012 4:36:24 PM
 Modified: 6/26/2012 5:02:42 PM

Electrophoresis File Run Summary (Chip Summary)

Sample Name	Sample Comment	Status	Result Label	Result Color
TOM-PST-0		✓	RIN: 7.50	
C2		✓	RIN: 7.70	
P3		✓	RIN: 6.50	
H2 1:2		✓	RIN: 8.70	
CF2		✓	RIN: 4.60	
L		✓	RIN N/A	
L2		✓	RIN: 7.10	
L3		✓	RIN N/A	
L5		✓	RIN: 7.70	
L7		✓	RIN N/A	
Sample 11				
Sample 12				
Ladder		✓	All Other Samples	

Chip Lot #

Reagent Kit Lot #

Chip Comments :

Assay Class: Eukaryote Total RNA Nano
Data Path: C:\...ents and Settings\Bioanalyzer\2012-06-26\2012-06-26_005.xad

Created: 6/26/2012 4:36:24 PM
Modified: 6/26/2012 5:02:42 PM

Electrophoresis Assay Details

General Analysis Settings

Number of Available Sample and Ladder Wells (Max.) : 13
Minimum Visible Range [s] : 17
Maximum Visible Range [s] : 70
Start Analysis Time Range [s] : 19
End Analysis Time Range [s] : 69
Ladder Concentration [ng/ μ l] : 150
Lower Marker Concentration [ng/ μ l] : 0
Upper Marker Concentration [ng/ μ l] : 0
Used Lower Marker for Quantitation
Standard Curve Fit is Logarithmic
Show Data Aligned to Lower Marker

Integrator Settings

Integration Start Time [s] : 19
Integration End Time [s] : 69
Slope Threshold : 0.6
Height Threshold [FU] : 0.5
Area Threshold : 0.2
Width Threshold [s] : 0.5
Baseline Plateau [s] : 6

Filter Settings

Filter Width [s] : 0.5
Polynomial Order : 4

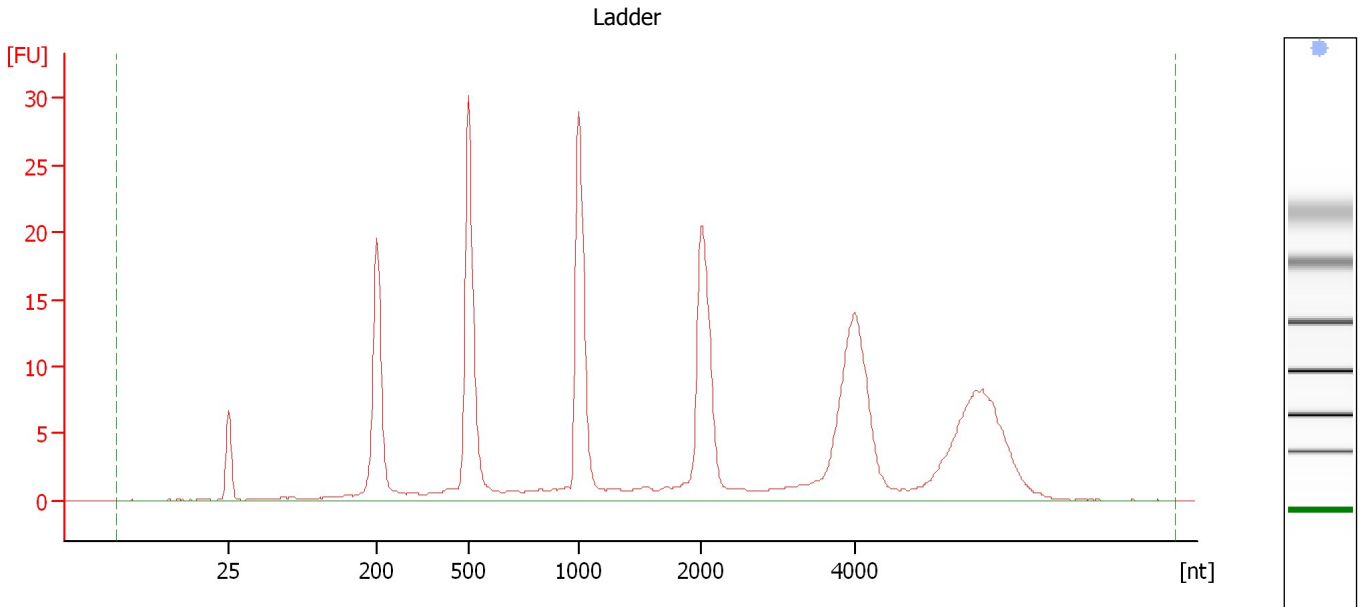
Ladder

Ladder Peak	Size
1	25
2	200
3	500
4	1000
5	2000
6	4000

Assay Class: Eukaryote Total RNA Nano
Data Path: C:\...ents and Settings\Bioanalyzer\2012-06-26\2012-06-26_005.xad

Created: 6/26/2012 4:36:24 PM
Modified: 6/26/2012 5:02:42 PM

Electropherogram Summary



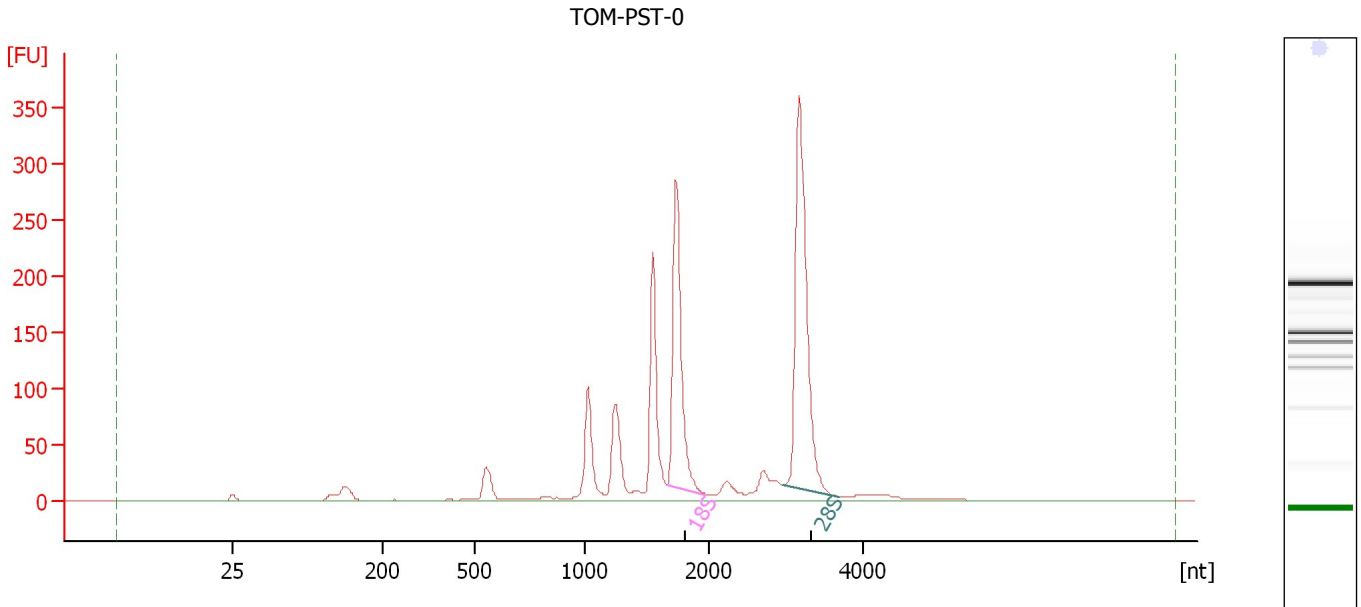
Overall Results for Ladder

RNA Area:	249.1	Result Flagging Color:	
RNA Concentration:	150 ng/μl	Result Flagging Label:	All Other Samples

Assay Class: Eukaryote Total RNA Nano
 Data Path: C:\...ents and Settings\Bioanalyzer\2012-06-26\2012-06-26_005.xad

Created: 6/26/2012 4:36:24 PM
 Modified: 6/26/2012 5:02:42 PM

Electropherogram Summary Continued ...



Overall Results for sample 1 : TOM-PST-0

RNA Area:	1,393.1	RNA Integrity Number (RIN):	7.5 (B.02.08, Anomaly Threshold(s) manually adapted)
RNA Concentration:	839 ng/μl	Result Flagging Color:	
rRNA Ratio [28s / 18s]:	1.6	Result Flagging Label:	RIN: 7.50

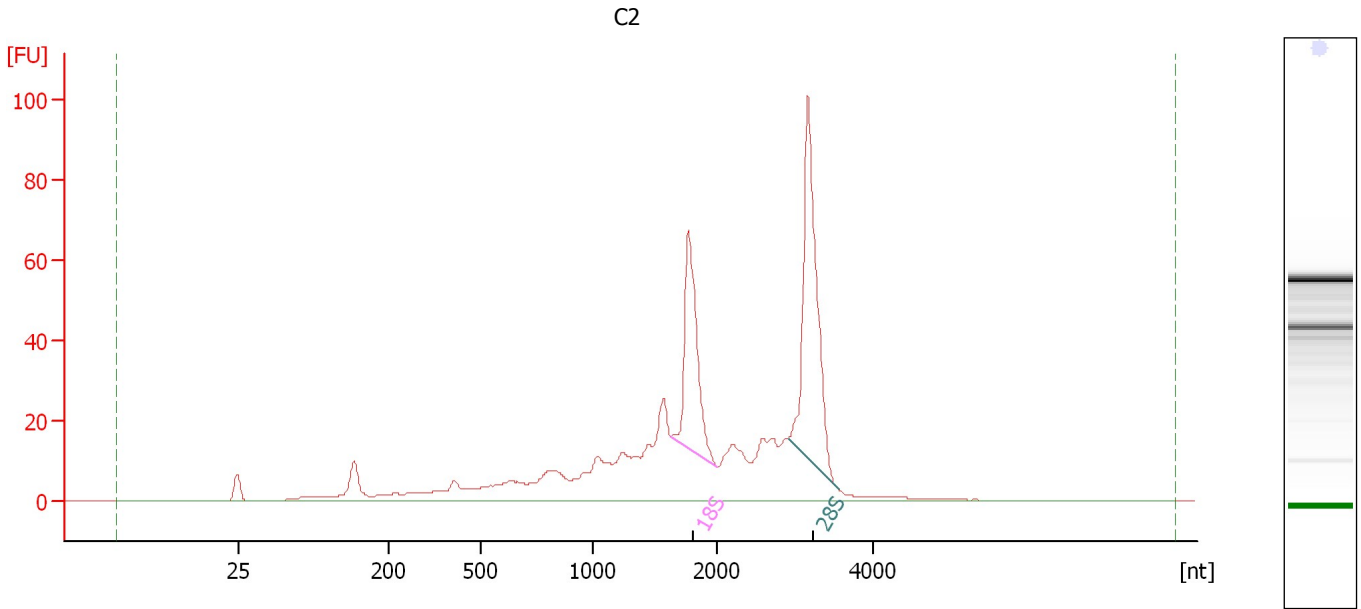
Fragment table for sample 1 : TOM-PST-0

Name	Start Size [nt]	End Size [nt]	Area	% of total Area
18S	1,658	1,969	257.7	18.5
28S	2,963	3,684	403.0	28.9

Assay Class: Eukaryote Total RNA Nano
Data Path: C:\...ents and Settings\Bioanalyzer\2012-06-26\2012-06-26_005.xad

Created: 6/26/2012 4:36:24 PM
Modified: 6/26/2012 5:02:42 PM

Electropherogram Summary Continued ...



Overall Results for sample 2 : C2

RNA Area:	637.5	RNA Integrity Number (RIN):	7.7 (B.02.08)
RNA Concentration:	384 ng/μl	Result Flagging Color:	
rRNA Ratio [28s / 18s]:	1.6	Result Flagging Label:	RIN: 7.70

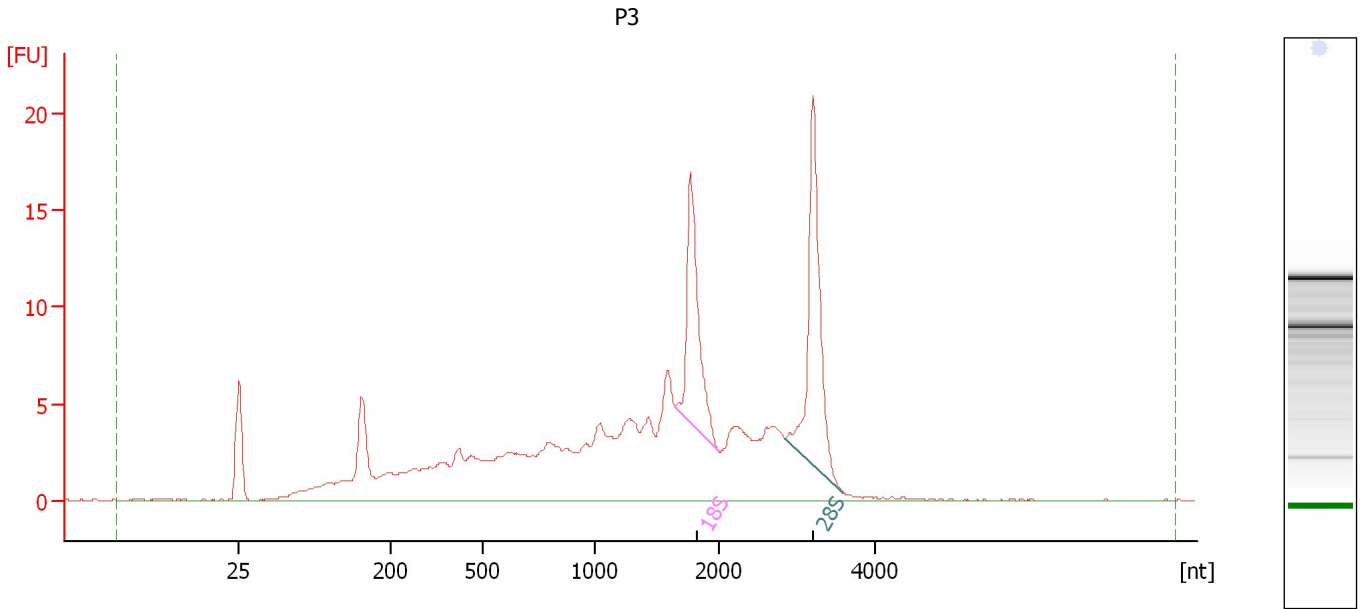
Fragment table for sample 2 : C2

Name	Start Size [nt]	End Size [nt]	Area	% of total Area
18S	1,630	1,998	76.6	12.0
28S	2,906	3,553	124.1	19.5

Assay Class: Eukaryote Total RNA Nano
 Data Path: C:\...ents and Settings\Bioanalyzer\2012-06-26\2012-06-26_005.xad

Created: 6/26/2012 4:36:24 PM
 Modified: 6/26/2012 5:02:42 PM

Electropherogram Summary Continued ...



Overall Results for sample 3 : P3

RNA Area:	197.8	RNA Integrity Number (RIN):	6.5 (B.02.08)
RNA Concentration:	119 ng/μl	Result Flagging Color:	
rRNA Ratio [28s / 18s]:	1.3	Result Flagging Label:	RIN: 6.50

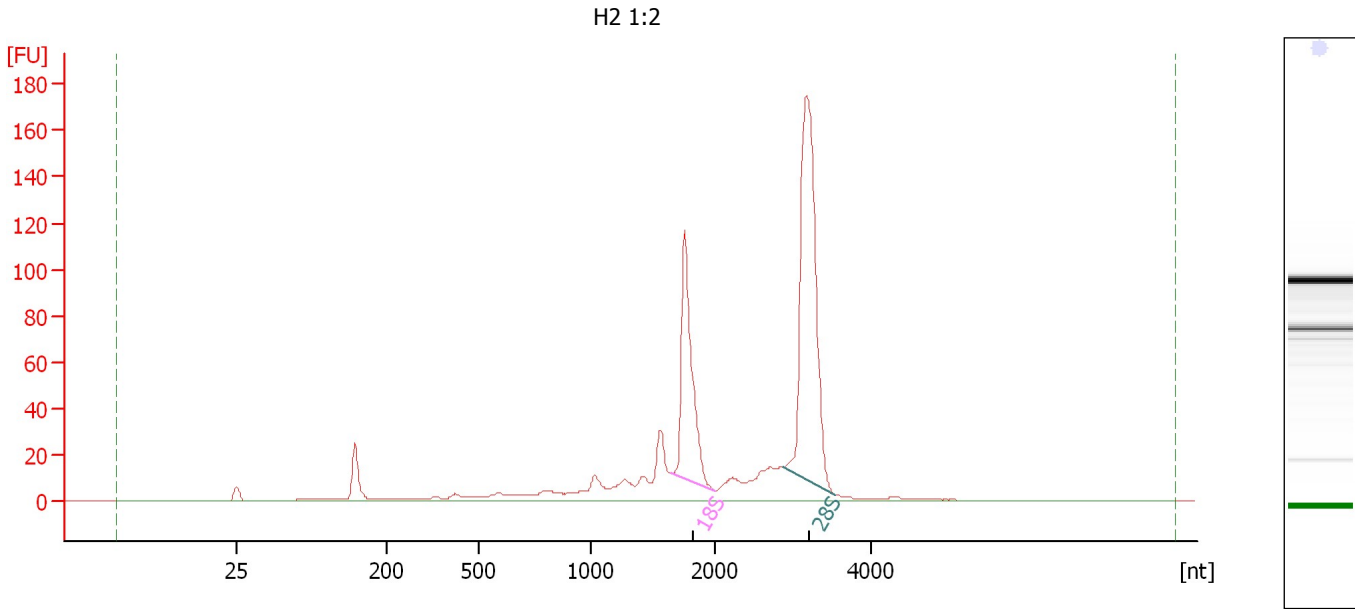
Fragment table for sample 3 : P3

Name	Start Size [nt]	End Size [nt]	Area	% of total Area
18S	1,649	1,991	16.7	8.4
28S	2,851	3,592	22.3	11.3

Assay Class: Eukaryote Total RNA Nano
 Data Path: C:\...ents and Settings\Bioanalyzer\2012-06-26\2012-06-26_005.xad

Created: 6/26/2012 4:36:24 PM
 Modified: 6/26/2012 5:02:42 PM

Electropherogram Summary Continued ...



Overall Results for sample 4 : H2 1:2

RNA Area:	745.1	RNA Integrity Number (RIN):	8.7 (B.02.08)
RNA Concentration:	449 ng/μl	Result Flagging Color:	
rRNA Ratio [28s / 18s]:	2.0	Result Flagging Label:	RIN: 8.70

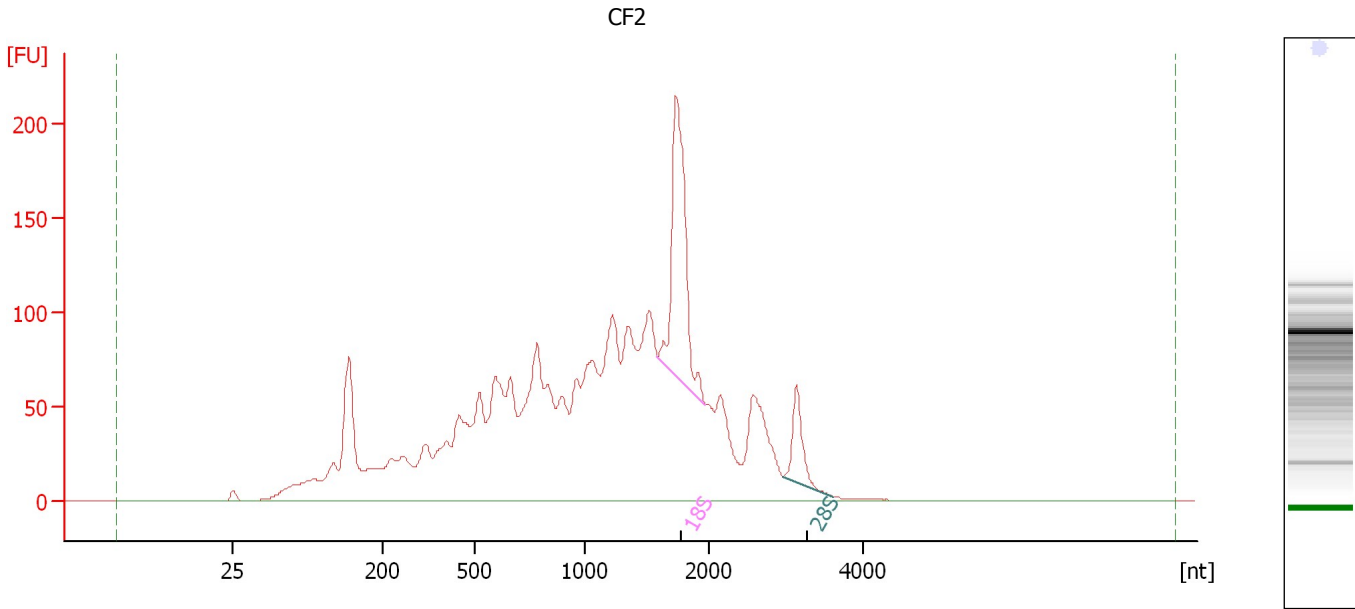
Fragment table for sample 4 : H2 1:2

Name	Start Size [nt]	End Size [nt]	Area	% of total Area
18S	1,637	1,989	130.9	17.6
28S	2,865	3,541	258.9	34.8

Assay Class: Eukaryote Total RNA Nano
Data Path: C:\...ents and Settings\Bioanalyzer\2012-06-26\2012-06-26_005.xad

Created: 6/26/2012 4:36:24 PM
Modified: 6/26/2012 5:02:42 PM

Electropherogram Summary Continued ...



Overall Results for sample 5 : CF2

RNA Area: 2,994.0 RNA Integrity Number (RIN): 4.6 (B.02.08)
RNA Concentration: 1,803 ng/μl Result Flagging Color:
rRNA Ratio [28s / 18s]: 0.2 Result Flagging Label: RIN: 4.60

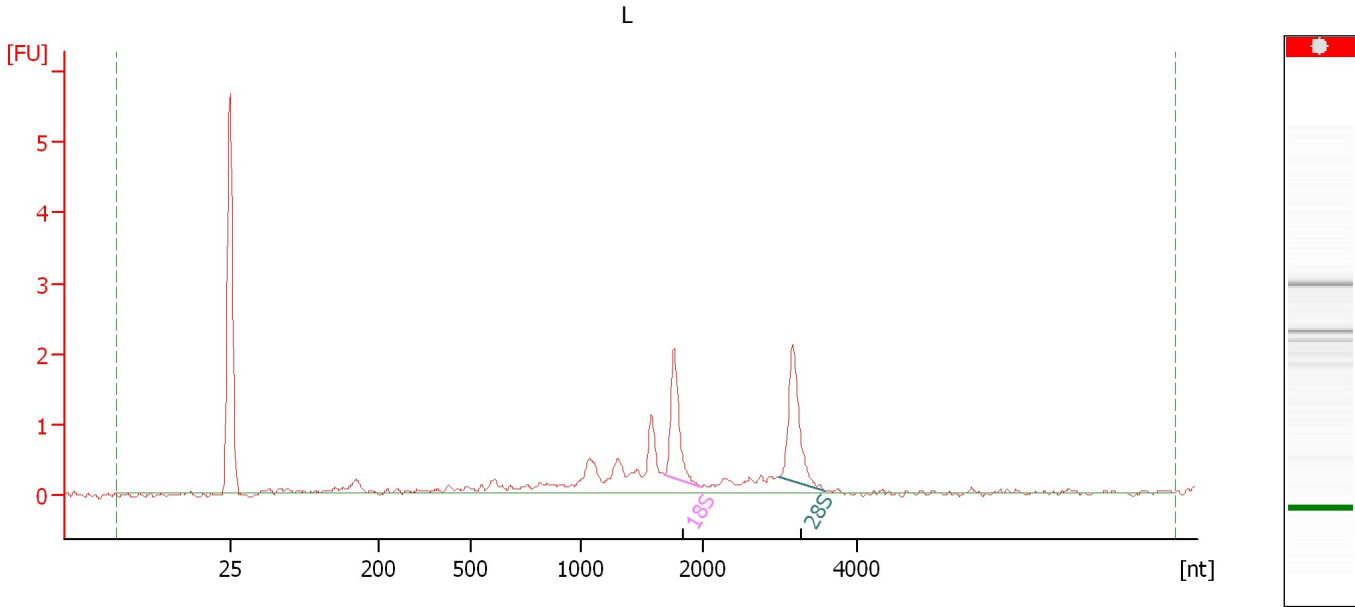
Fragment table for sample 5 : CF2

Name	Start Size [nt]	End Size [nt]	Area	% of total Area
18S	1,581	1,969	232.4	7.8
28S	2,963	3,615	51.5	1.7

Assay Class: Eukaryote Total RNA Nano
Data Path: C:\...ents and Settings\Bioanalyzer\2012-06-26\2012-06-26_005.xad

Created: 6/26/2012 4:36:24 PM
Modified: 6/26/2012 5:02:42 PM

Electropherogram Summary Continued ...



Overall Results for sample 6 : L

RNA Area: 13.1 RNA Integrity Number (RIN): N/A (B.02.08)
RNA Concentration: 8 ng/μl Result Flagging Color:
rRNA Ratio [28s / 18s]: 1.3 Result Flagging Label: RIN N/A

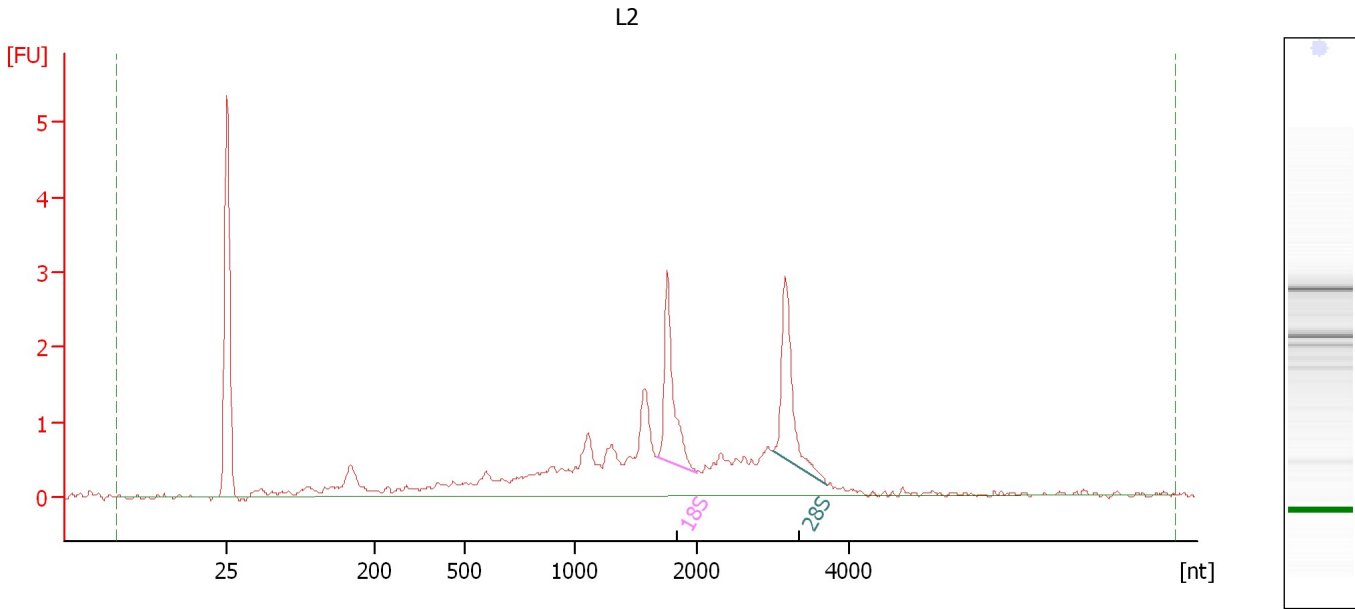
Fragment table for sample 6 : L

Name	Start Size [nt]	End Size [nt]	Area	% of total Area
18S	1,679	1,974	1.8	13.4
28S	2,978	3,578	2.2	17.0

Assay Class: Eukaryote Total RNA Nano
Data Path: C:\...ents and Settings\Bioanalyzer\2012-06-26\2012-06-26_005.xad

Created: 6/26/2012 4:36:24 PM
Modified: 6/26/2012 5:02:42 PM

Electropherogram Summary Continued ...



Overall Results for sample 7 : L2

RNA Area: 26.3 RNA Integrity Number (RIN): 7.1 (B.02.08)
RNA Concentration: 16 ng/μl Result Flagging Color:
rRNA Ratio [28s / 18s]: 1.0 Result Flagging Label: RIN: 7.10

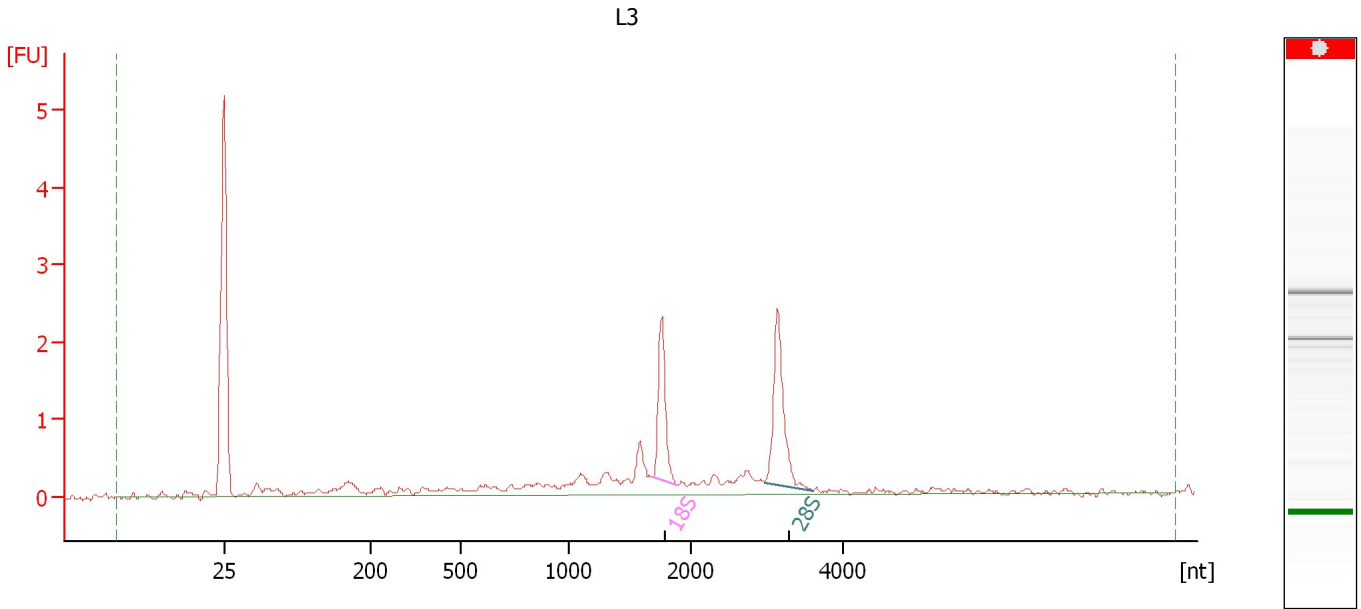
Fragment table for sample 7 : L2

Name	Start Size [nt]	End Size [nt]	Area	% of total Area
18S	1,675	1,989	2.8	10.5
28S	2,979	3,710	2.7	10.3

Assay Class: Eukaryote Total RNA Nano
Data Path: C:\...ents and Settings\Bioanalyzer\2012-06-26\2012-06-26_005.xad

Created: 6/26/2012 4:36:24 PM
Modified: 6/26/2012 5:02:42 PM

Electropherogram Summary Continued ...



Overall Results for sample 8 : L3

RNA Area:	14.5	RNA Integrity Number (RIN):	N/A (B.02.08)
RNA Concentration:	9 ng/μl	Result Flagging Color:	
rRNA Ratio [28s / 18s]:	1.4	Result Flagging Label:	RIN N/A

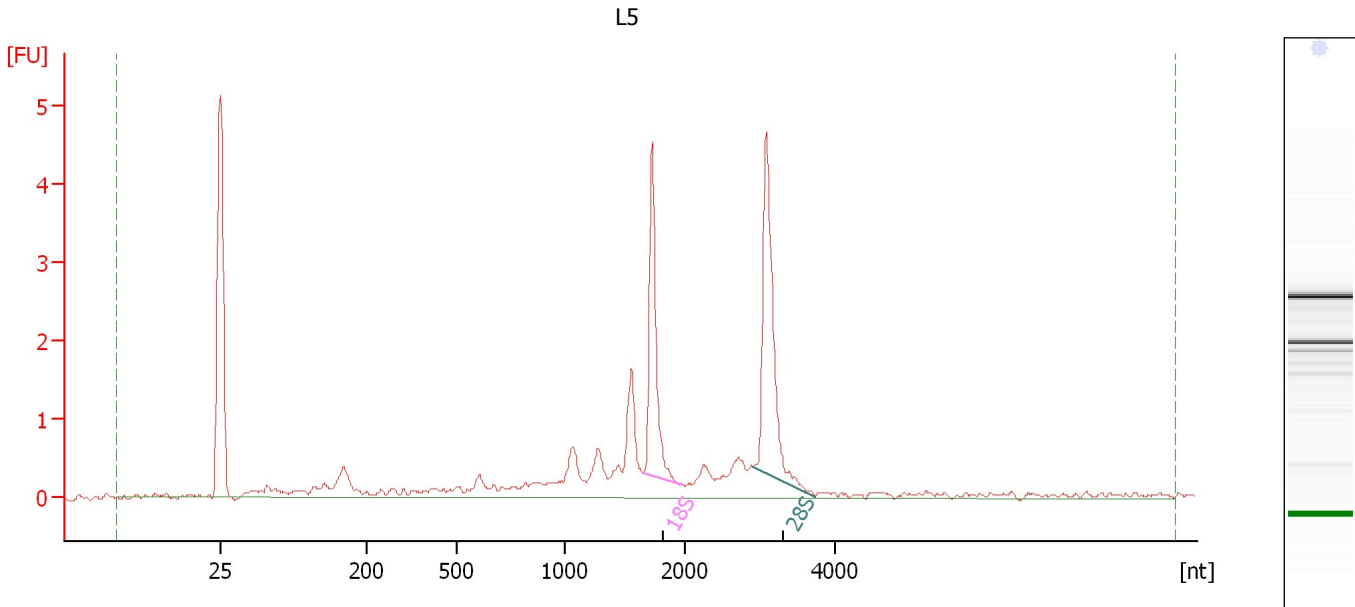
Fragment table for sample 8 : L3

Name	Start Size [nt]	End Size [nt]	Area	% of total Area
18S	1,679	1,881	1.7	11.7
28S	2,967	3,603	2.5	16.9

Assay Class: Eukaryote Total RNA Nano
 Data Path: C:\...ents and Settings\Bioanalyzer\2012-06-26\2012-06-26_005.xad

Created: 6/26/2012 4:36:24 PM
 Modified: 6/26/2012 5:02:42 PM

Electropherogram Summary Continued ...



Overall Results for sample 9 : L5

RNA Area:	24.0	RNA Integrity Number (RIN):	7.7 (B.02.08, Anomaly Threshold(s) manually adapted)
RNA Concentration:	14 ng/μl	Result Flagging Color:	
rRNA Ratio [28s / 18s]:	1.3	Result Flagging Label:	RIN: 7.70

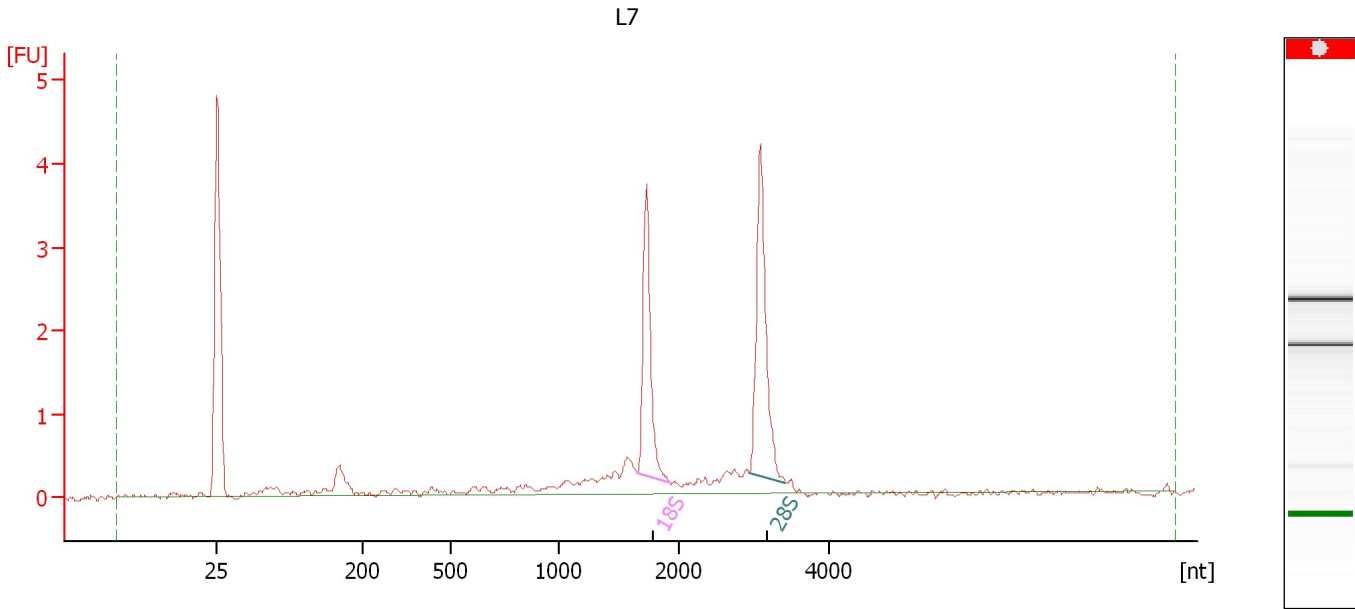
Fragment table for sample 9 : L5

Name	Start Size [nt]	End Size [nt]	Area	% of total Area
18S	1,656	1,974	3.6	15.0
28S	2,897	3,736	4.8	19.9

Assay Class: Eukaryote Total RNA Nano
Data Path: C:\...ents and Settings\Bioanalyzer\2012-06-26\2012-06-26_005.xad

Created: 6/26/2012 4:36:24 PM
Modified: 6/26/2012 5:02:42 PM

Electropherogram Summary Continued ...



Overall Results for sample 10 : L7

RNA Area:	14.8	RNA Integrity Number (RIN):	N/A (B.02.08)
RNA Concentration:	9 ng/μl	Result Flagging Color:	
rRNA Ratio [28s / 18s]:	1.4	Result Flagging Label:	RIN N/A

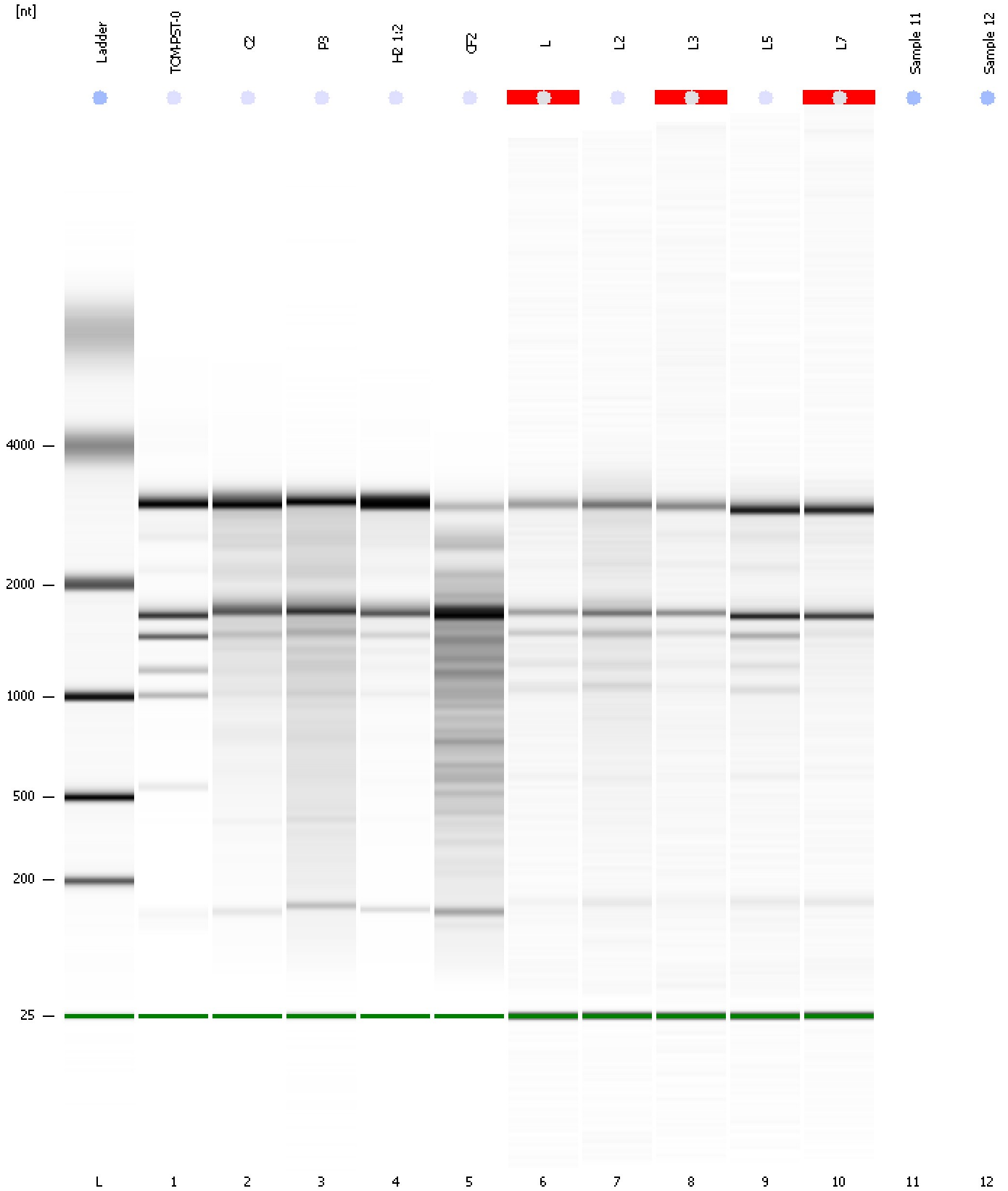
Fragment table for sample 10 : L7

Name	Start Size [nt]	End Size [nt]	Area	% of total Area
18S	1,642	1,927	3.0	20.6
28S	2,941	3,427	4.1	27.8

Assay Class: Eukaryote Total RNA Nano
Data Path: C:\...ents and Settings\Bioanalyzer\2012-06-26\2012-06-26_005.xad

Created: 6/26/2012 4:36:24 PM
Modified: 6/26/2012 5:02:42 PM

Gel Image



Assay Class: Eukaryote Total RNA Nano
Data Path: C:\...ents and Settings\Bioanalyzer\2012-06-26\2012-06-26_005.xad

Created: 6/26/2012 4:36:24 PM
Modified: 6/26/2012 5:02:42 PM

Invalid Samples

Sample 11 has not been run, no results available.

Sample 12 has not been run, no results available.

Assay Class: Eukaryote Total RNA Nano
 Data Path: C:\...ents and Settings\Bioanalyzer\2012-06-26\2012-06-26_005.xad

Created: 6/26/2012 4:36:24 PM
 Modified: 6/26/2012 5:02:42 PM

Run Logbook

Description	Number	Source	Category	Sub Category	Time	Time Zone	User	Host
Run ended on port 1 (Number of wells acquired: 11)		Instrument	Run		6/26/2012 4:57:29 PM	(GMT --07:00) Pacific Standard Time	UC Davis	D8XSMGH1
Run started on port 1 (File: C:\Documents and Settings\Bioanalyzer\2012-06-26\2012-06-26_005.xad)		Instrument	Run		6/26/2012 4:36:29 PM	(GMT --07:00) Pacific Standard Time	UC Davis	D8XSMGH1
Product Number : G2938B		Instrument	Run		6/26/2012 4:36:29 PM	(GMT --07:00) Pacific Standard Time	UC Davis	D8XSMGH1
Name :		Instrument	Run		6/26/2012 4:36:29 PM	(GMT --07:00) Pacific Standard Time	UC Davis	D8XSMGH1
Vendor : Agilent Technologies		Instrument	Run		6/26/2012 4:36:29 PM	(GMT --07:00) Pacific Standard Time	UC Davis	D8XSMGH1
Serial# : DE13701086		Instrument	Run		6/26/2012 4:36:29 PM	(GMT --07:00) Pacific Standard Time	UC Davis	D8XSMGH1
Firmware : C.01.069		Instrument	Run		6/26/2012 4:36:29 PM	(GMT --07:00) Pacific Standard Time	UC Davis	D8XSMGH1
Cartridge : Electrode		Instrument	Run		6/26/2012 4:36:29 PM	(GMT --07:00) Pacific Standard Time	UC Davis	D8XSMGH1