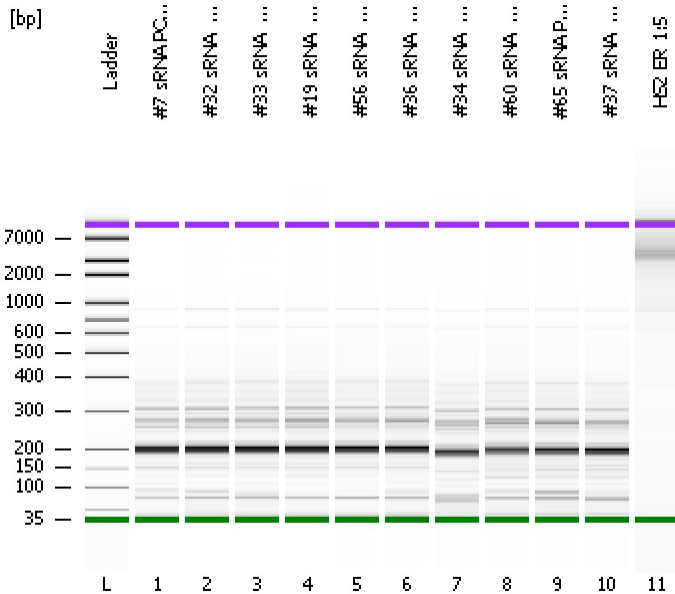


Assay Class: High Sensitivity DNA Assay
Data Path: C:\...ents and Settings\Bioanalyzer\2012-06-27\2012-06-27_002.xad

Created: 6/27/2012 10:17:00 AM
Modified: 6/27/2012 10:58:20 AM

Electrophoresis File Run Summary



Instrument Information:

Instrument Name: DE13701086 Firmware: C.01.069
Serial#: DE13701086 Type: G2938B

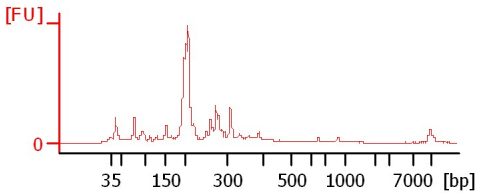
Assay Information:

Assay Origin Path: C:\Program Files\Agilent\2100 bioanalyzer\2100 expert\assays\dsDNA\High Sensitivity DNA.xsy
Assay Class: High Sensitivity DNA Assay
Version: 1.03
Assay Comments: Copyright © 2003-2010 Agilent Technologies

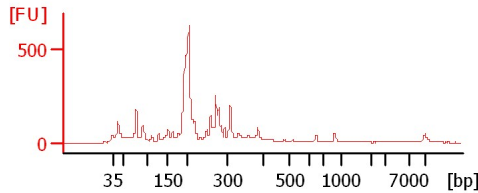
Chip Information:

Chip Lot #:
Reagent Kit Lot #:
Chip Comments:

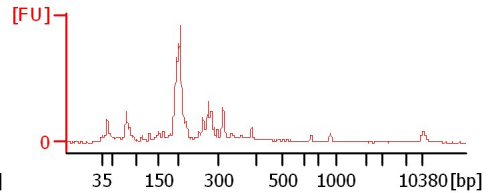
#7 sRNA PCR 1:5 (6/25/12) 15 cyc



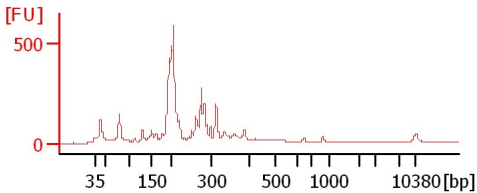
#32 sRNA PCR 1:3 (6/25/12) 15 cyc



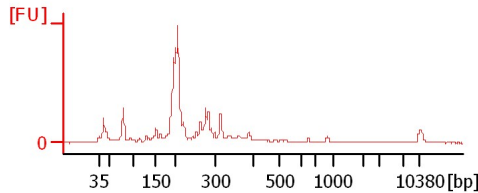
#33 sRNA PCR 1:4 (6/25/12) 15 cyc



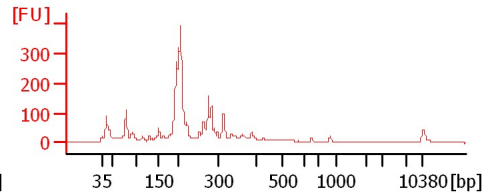
#19 sRNA PCR 1:4 (6/25/12) 15 cyc



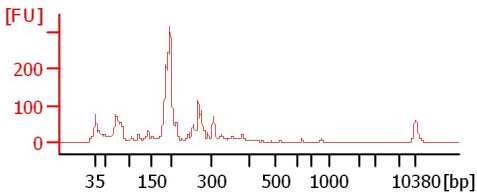
#56 sRNA PCR 1:5 (6/25/12) 15 cyc



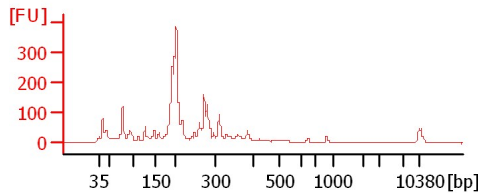
#36 sRNA PCR 1:5 (6/25/12) 15 cyc



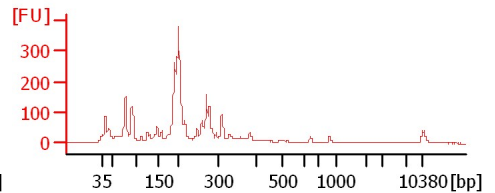
#34 sRNA PCR 1:10 (6/25/12) 15 cyc



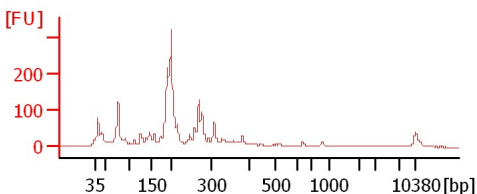
#60 sRNA PCR 1:10 (6/25/12) 15 cyc



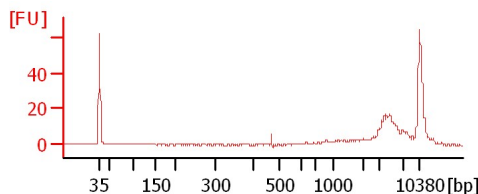
#65 sRNA PCR 1:5(6/25/12) 15 cyc



#37 sRNA PCR 1:6 (6/25/12) 15 cyc



HS2 ER 1:5



Assay Class: High Sensitivity DNA Assay
 Data Path: C:\...ents and Settings\Bioanalyzer\2012-06-27\2012-06-27_002.xad

Created: 6/27/2012 10:17:00 AM
 Modified: 6/27/2012 10:58:20 AM

Electrophoresis File Run Summary (Chip Summary)

Sample Name	Sample Comment	Rest. Digest	Status	Observation	Result Label	Result Color
#7 sRNA PCR 1:5 (6/25/12) 15 cyc		<input type="checkbox"/>	✓			
#32 sRNA PCR 1:3 (6/25/12) 15 cyc		<input type="checkbox"/>	✓			
#33 sRNA PCR 1:4 (6/25/12) 15 cyc		<input type="checkbox"/>	✓			
#19 sRNA PCR 1:4 (6/25/12) 15 cyc		<input type="checkbox"/>	✓			
#56 sRNA PCR 1:5 (6/25/12) 15 cyc		<input type="checkbox"/>	✓			
#36 sRNA PCR 1:5 (6/25/12) 15 cyc		<input type="checkbox"/>	✓			
#34 sRNA PCR 1:10 (6/25/12) 15 cyc		<input type="checkbox"/>	✓			
#60 sRNA PCR 1:10 (6/25/12) 15 cyc		<input type="checkbox"/>	✓			
#65 sRNA PCR 1:5(6/25/12) 15 cyc		<input type="checkbox"/>	✓			
#37 sRNA PCR 1:6 (6/25/12) 15 cyc		<input type="checkbox"/>	✓			
HS2 ER 1:5		<input type="checkbox"/>	✓			
Ladder		<input type="checkbox"/>	✓			

Chip Lot #

Reagent Kit Lot #

Chip Comments :

Assay Class: High Sensitivity DNA Assay
Data Path: C:\...ents and Settings\Bioanalyzer\2012-06-27\2012-06-27_002.xad

Created: 6/27/2012 10:17:00 AM
Modified: 6/27/2012 10:58:20 AM

Electrophoresis Assay Details

General Analysis Settings

Number of Available Sample and Ladder Wells (Max.) : 12
Minimum Visible Range [s] : 32
Maximum Visible Range [s] : 138
Start Analysis Time Range [s] : 33
End Analysis Time Range [s] : 137.5
Ladder Concentration [pg/μl] : 1950
Uses Standard Area for Ladder Fragments
Lower Marker Concentration [pg/μl] : 125
Upper Marker Concentration [pg/μl] : 75
Used Upper Marker for Quantitation
Standard Curve Fit is Point to Point
Show Data Aligned to Lower and Upper Marker

Integrator Settings

Integration Start Time [s] : 33.05
Integration End Time [s] : 137
Slope Threshold : 0.8
Height Threshold [FU] : 5
Area Threshold : 0.1
Width Threshold [s] : 0.6
Baseline Plateau [s] : 0.5

Filter Settings

Filter Width [s] : 0.5
Polynomial Order : 4

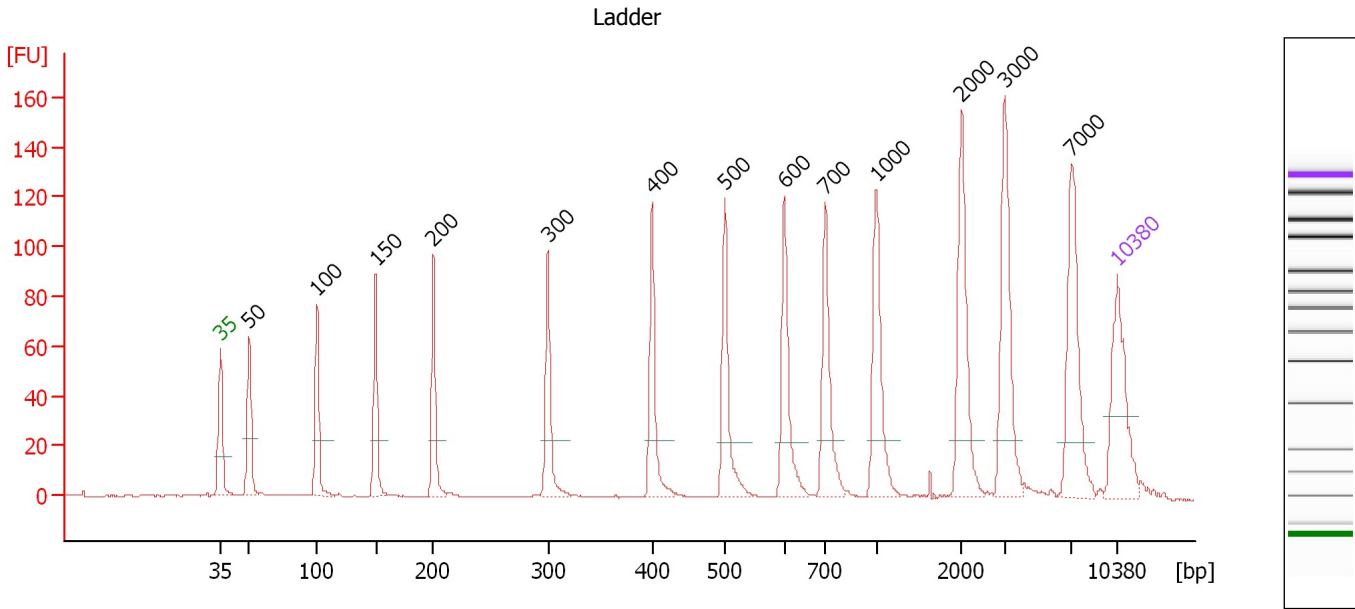
Ladder

Ladder Peak	Size	Area
1	35	160
2	50	210
3	100	208
4	150	221
5	200	242
6	300	270
7	400	305
8	500	306
9	600	336
10	700	321
11	1000	366
12	2000	413
13	3000	411
14	7000	400
15	10380	214

Assay Class: High Sensitivity DNA Assay
 Data Path: C:\...ents and Settings\Bioanalyzer\2012-06-27\2012-06-27_002.xad

Created: 6/27/2012 10:17:00 AM
 Modified: 6/27/2012 10:58:20 AM

Electropherogram Summary



Overall Results for Ladder

Noise: 0.1

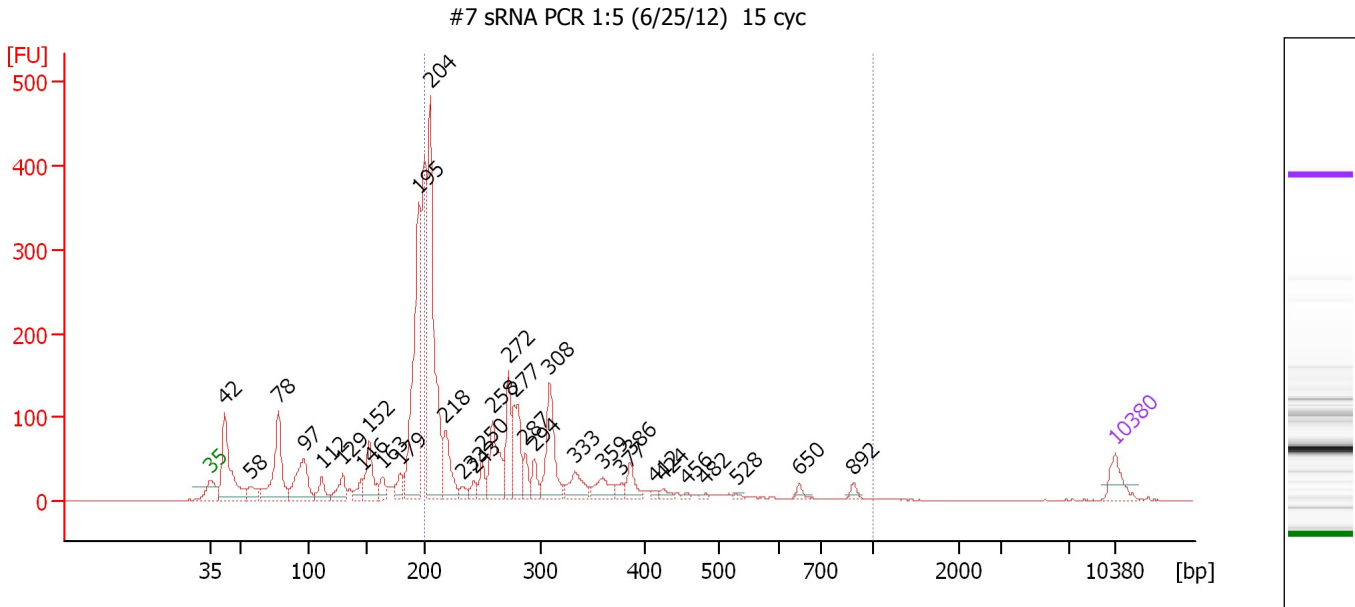
Peak table for Ladder

Peak	Size [bp]	Conc. [pg/μl]	Molarity [pmol/l]	Observations
1	35	125.00	5,411.3	Lower Marker
2	50	150.00	4,545.5	Ladder Peak
3	100	150.00	2,272.7	Ladder Peak
4	150	150.00	1,515.2	Ladder Peak
5	200	150.00	1,136.4	Ladder Peak
6	300	150.00	757.6	Ladder Peak
7	400	150.00	568.2	Ladder Peak
8	500	150.00	454.5	Ladder Peak
9	600	150.00	378.8	Ladder Peak
10	700	150.00	324.7	Ladder Peak
11	1,000	150.00	227.3	Ladder Peak
12	2,000	150.00	113.6	Ladder Peak
13	3,000	150.00	75.8	Ladder Peak
14	7,000	150.00	32.5	Ladder Peak
15	10,380	75.00	10.9	Upper Marker

Assay Class: High Sensitivity DNA Assay
 Data Path: C:\...ents and Settings\Bioanalyzer\2012-06-27\2012-06-27_002.xad

Created: 6/27/2012 10:17:00 AM
 Modified: 6/27/2012 10:58:20 AM

Electropherogram Summary Continued ...



Overall Results for sample 1 : #7 sRNA PCR 1:5 (6/25/12) 15 cyc

Number of peaks found: 33 Corr. Area 1: 1,820.9
 Noise: 0.4

Peak table for sample 1 : #7 sRNA PCR 1:5 (6/25/12) 15 cyc


Peak	Size [bp]	Conc. [pg/μl]	Molarity [pmol/l]	Observations
1	35	125.00	5,411.3	Lower Marker
2	42	564.30	20,149.0	
3	58	95.02	2,498.8	
4	78	490.65	9,494.6	
5	97	321.31	5,017.4	
6	112	94.26	1,276.4	
7	129	109.91	1,286.3	
8	146	71.40	742.6	
9	152	223.85	2,231.0	
10	163	68.13	631.4	
11	179	82.77	702.0	
12	195	1,008.10	7,845.2	
13	204	1,200.80	8,903.2	
14	218	227.07	1,580.2	
15	233	36.81	239.4	
16	243	46.00	287.3	
17	250	84.13	510.8	
18	258	283.98	1,665.8	
19	272	240.46	1,338.9	
20	277	268.03	1,467.5	
21	287	78.69	415.6	
22	294	75.89	390.8	
23	308	328.59	1,614.3	
24	333	118.96	541.6	
25	359	94.19	397.3	
26	377	29.75	119.5	

Assay Class: High Sensitivity DNA Assay
 Data Path: C:\...ents and Settings\Bioanalyzer\2012-06-27\2012-06-27_002.xad

Created: 6/27/2012 10:17:00 AM
 Modified: 6/27/2012 10:58:20 AM

Electropherogram Summary Continued ...

... Peak table for sample 1 : #7 sRNA PCR 1:5 (6/25/12) 15 cyc

Peak	Size [bp]	Conc. [pg/µl]	Molarity [pmol/l]	Observations
27	386	84.85	333.3	
28	412	13.54	49.8	
29	424	22.72	81.2	
30	456	9.67	32.1	
31	482	9.49	29.9	
32	528	6.21	17.8	
33	650	20.12	46.9	
34	892	20.59	35.0	
35	 10,380	75.00	10.9	Upper Marker

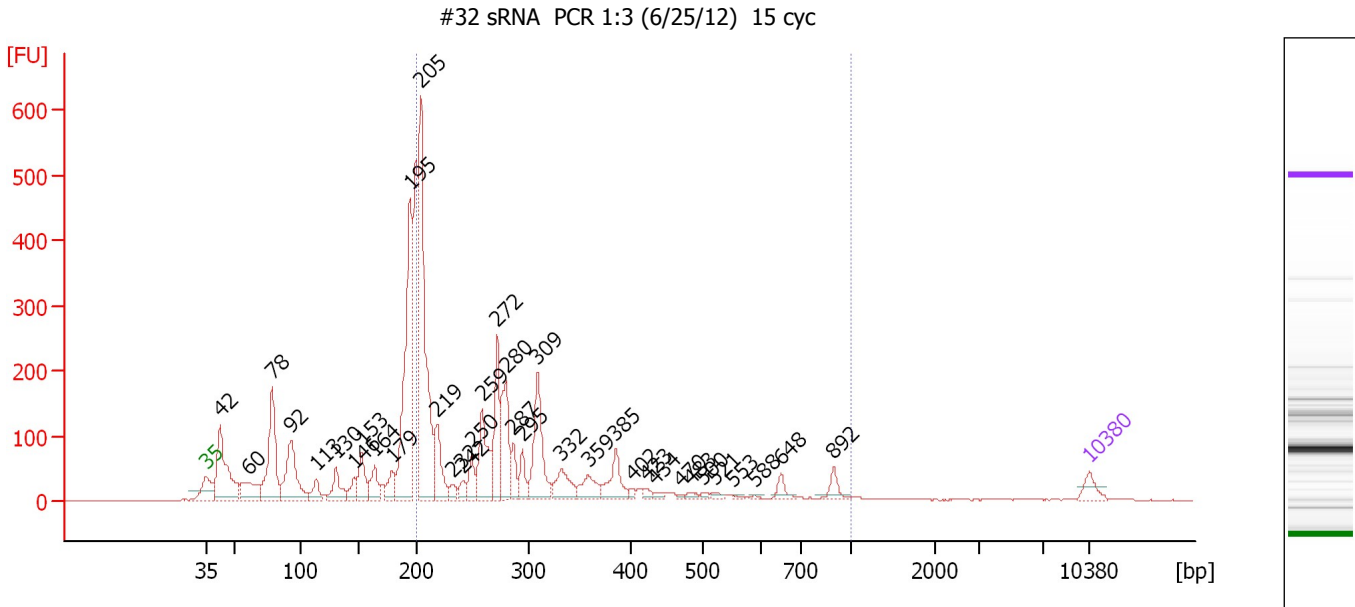
Region table for sample 1 : #7 sRNA PCR 1:5 (6/25/12) 15 cyc

From [bp]	To [bp]	Average Size [bp]	Molarity [pmol/l]	Conc. [pg/µl]	Corr. Area	% of Total	Size distribution in CV [%]	Color
200	1,000	294	22,531.7	3,862.18	1,820.9	54	41.5	

Assay Class: High Sensitivity DNA Assay
 Data Path: C:\...ents and Settings\Bioanalyzer\2012-06-27\2012-06-27_002.xad

Created: 6/27/2012 10:17:00 AM
 Modified: 6/27/2012 10:58:20 AM

Electropherogram Summary Continued ...



Overall Results for sample 2 : #32 sRNA PCR 1:3 (6/25/12) 15 cyc

Number of peaks found: 36 Corr. Area 1: 2,630.3
 Noise: 0.4

Peak table for sample 2 : #32 sRNA PCR 1:3 (6/25/12) 15 cyc

Peak	Size [bp]	Conc. [pg/μl]	Molarity [pmol/l]	Observations
1	35	125.00	5,411.3	Lower Marker
2	42	993.82	35,568.0	
3	60	339.97	8,595.1	
4	78	949.00	18,357.8	
5	92	737.99	12,111.7	
6	113	150.17	2,008.4	
7	130	253.59	2,947.0	
8	146	135.15	1,401.9	
9	153	286.95	2,849.4	
10	164	219.52	2,029.7	
11	179	172.19	1,458.2	
12	195	1,764.00	13,712.9	
13	205	2,127.37	15,738.5	
14	219	408.97	2,829.8	
15	232	74.17	484.0	
16	242	89.64	560.9	
17	250	166.06	1,007.7	
18	259	532.33	3,112.6	
19	272	546.33	3,039.3	
20	280	528.67	2,861.6	
21	287	158.42	837.7	
22	295	165.02	848.8	
23	309	634.89	3,117.2	
24	332	252.14	1,150.6	
25	359	194.48	821.7	
26	385	263.24	1,035.5	

Assay Class: High Sensitivity DNA Assay
 Data Path: C:\...ents and Settings\Bioanalyzer\2012-06-27\2012-06-27_002.xad


Created: 6/27/2012 10:17:00 AM
 Modified: 6/27/2012 10:58:20 AM

Electropherogram Summary Continued ...

... Peak table for sample 2 : #32 sRNA PCR 1:3 (6/25/12) 15 cyc

Peak	Size [bp]	Conc. [pg/µl]	Molarity [pmol/l]	Observations
27	402	28.33	106.8	
28	423	39.50	141.6	
29	434	30.57	106.8	
30	470	13.53	43.6	
31	483	31.29	98.1	
32	500	19.57	59.3	
33	521	26.56	77.3	
34	553	10.11	27.7	
35	588	9.41	24.2	
36	648	71.72	167.7	
37	892	81.77	138.9	
38	10,380	75.00	10.9	Upper Marker

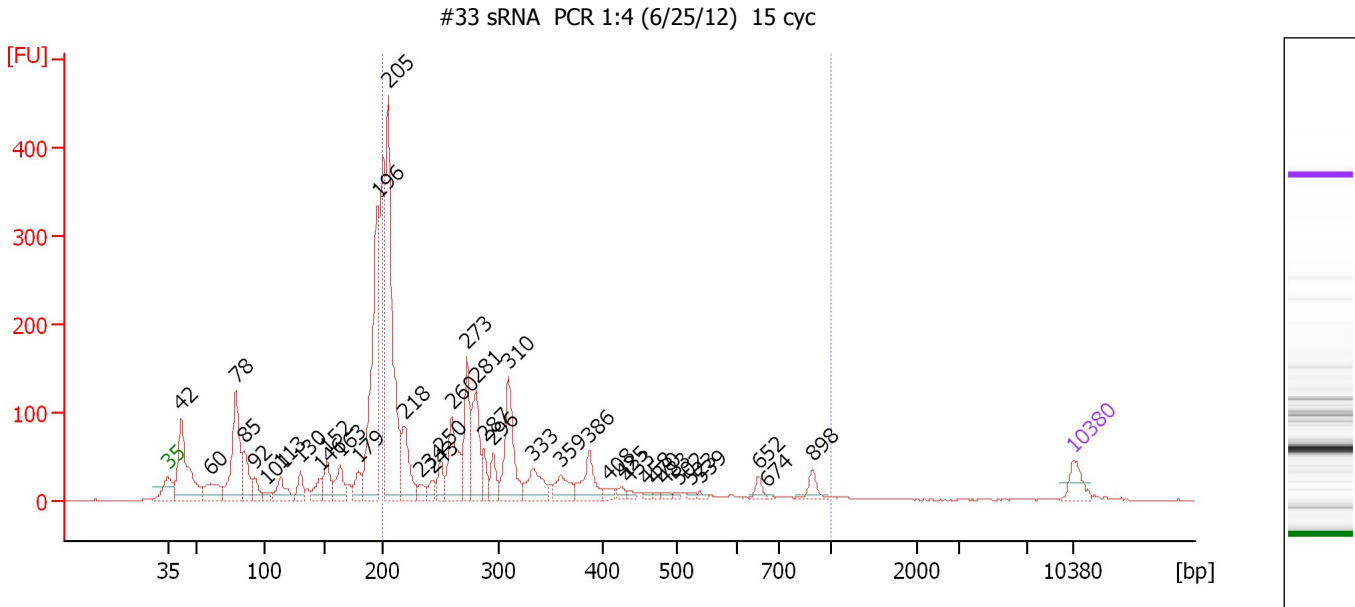
Region table for sample 2 : #32 sRNA PCR 1:3 (6/25/12) 15 cyc

From [bp]	To [bp]	Average Size [bp]	Molarity [pmol/l]	Conc. [pg/µl]	Corr. Area	% of Total	Size distribution in CV [%]	Color
200	1,000	304	42,743.3	7,422.56	2,630.3	56	45.5	

Assay Class: High Sensitivity DNA Assay
 Data Path: C:\...ents and Settings\Bioanalyzer\2012-06-27\2012-06-27_002.xad

Created: 6/27/2012 10:17:00 AM
 Modified: 6/27/2012 10:58:20 AM

Electropherogram Summary Continued ...



Overall Results for sample 3 : #33 sRNA PCR 1:4 (6/25/12) 15 cyc

Number of peaks found: 39 Corr. Area 1: 1,888.2
 Noise: 0.4

Peak table for sample 3 : #33 sRNA PCR 1:4 (6/25/12) 15 cyc

Peak	Size [bp]	Conc. [pg/μl]	Molarity [pmol/l]	Observations
1	35	125.00	5,411.3	Lower Marker
2	42	689.86	24,917.9	
3	60	196.02	4,922.8	
4	78	615.78	11,902.9	
5	85	224.04	4,015.3	
6	92	101.91	1,679.7	
7	101	31.82	479.1	
8	113	148.28	1,989.3	
9	130	98.24	1,145.1	
10	146	92.84	962.8	
11	152	154.85	1,545.4	
12	163	151.97	1,409.2	
13	179	107.08	904.8	
14	196	1,118.76	8,660.7	
15	205	1,397.34	10,332.2	
16	218	283.12	1,963.4	
17	234	51.22	332.4	
18	243	58.08	362.6	
19	250	99.86	605.3	
20	260	332.64	1,940.8	
21	273	325.59	1,808.5	
22	281	319.83	1,724.5	
23	287	94.77	499.8	
24	296	102.10	523.4	
25	310	404.15	1,978.4	
26	333	170.43	775.4	

Assay Class: High Sensitivity DNA Assay
 Data Path: C:\...ents and Settings\Bioanalyzer\2012-06-27\2012-06-27_002.xad

Created: 6/27/2012 10:17:00 AM
 Modified: 6/27/2012 10:58:20 AM

Electropherogram Summary Continued ...

... Peak table for sample 3 : #33 sRNA PCR 1:4 (6/25/12) 15 cyc

Peak	Size [bp]	Conc. [pg/μl]	Molarity [pmol/l]	Observations
27	359	121.67	513.2	
28	386	172.58	676.6	
29	408	33.65	124.9	
30	425	30.78	109.8	
31	433	17.69	61.9	
32	458	15.78	52.3	
33	470	13.44	43.3	
34	483	18.33	57.5	
35	502	12.87	38.8	
36	523	14.14	41.0	
37	539	14.76	41.5	
38	652	41.53	96.4	
39	674	7.89	17.7	
40	898	57.17	96.5	
41	▶ 10,380	75.00	10.9	Upper Marker

Region table for sample 3 : #33 sRNA PCR 1:4 (6/25/12) 15 cyc

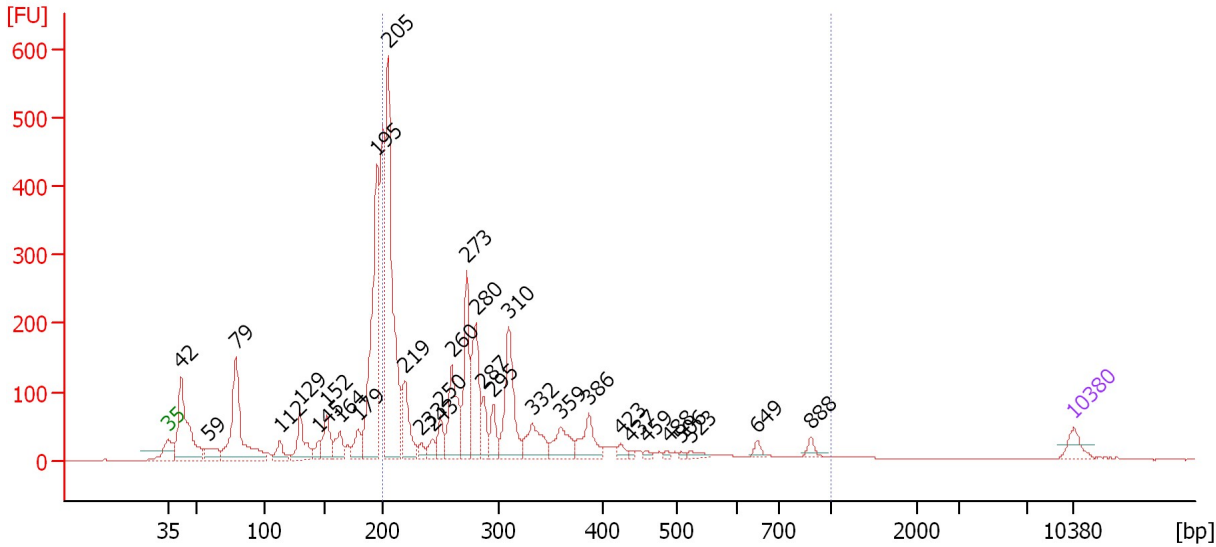
From [bp]	To [bp]	Average Size [bp]	Molarity [pmol/l]	Conc. [pg/μl]	Corr. Area	% of Total	Size distribution in CV [%]	Color
200	1,000	304	27,543.9	4,775.23	1,888.2	57	45.5	■

Assay Class: High Sensitivity DNA Assay
 Data Path: C:\...ents and Settings\Bioanalyzer\2012-06-27\2012-06-27_002.xad

Created: 6/27/2012 10:17:00 AM
 Modified: 6/27/2012 10:58:20 AM

Electropherogram Summary Continued ...

#19 sRNA PCR 1:4 (6/25/12) 15 cyc



Overall Results for sample 4 : #19 sRNA PCR 1:4 (6/25/12) 15 cyc

Number of peaks found: 32 Corr. Area 1: 2,640.7
 Noise: 0.4

Peak table for sample 4 : #19 sRNA PCR 1:4 (6/25/12) 15 cyc

Peak	Size [bp]	Conc. [pg/μl]	Molarity [pmol/l]	Observations
1	35	125.00	5,411.3	Lower Marker
2	42	879.02	31,848.1	
3	59	155.19	3,985.7	
4	79	925.51	17,808.7	
5	112	117.23	1,581.4	
6	129	270.85	3,173.7	
7	145	98.15	1,023.4	
8	152	222.67	2,224.7	
9	164	163.76	1,517.5	
10	179	146.06	1,237.5	
11	195	1,421.91	11,040.8	
12	205	1,876.15	13,897.8	
13	219	351.07	2,424.1	
14	233	55.55	360.7	
15	243	77.82	484.7	
16	250	142.13	862.4	
17	260	464.59	2,711.2	
18	273	528.43	2,937.7	
19	280	485.35	2,621.8	
20	287	149.34	788.6	
21	295	150.59	772.5	
22	310	563.03	2,754.6	
23	332	257.63	1,175.3	
24	359	209.89	884.6	
25	386	209.83	823.0	
26	423	41.88	149.9	

Assay Class: High Sensitivity DNA Assay
 Data Path: C:\...ents and Settings\Bioanalyzer\2012-06-27\2012-06-27_002.xad

Created: 6/27/2012 10:17:00 AM
 Modified: 6/27/2012 10:58:20 AM

Electropherogram Summary Continued ...

... Peak table for sample 4 : #19 sRNA PCR 1:4 (6/25/12) 15 cyc

Peak	Size [bp]	Conc. [pg/μl]	Molarity [pmol/l]	Observations
27	437	18.10	62.8	
28	459	18.21	60.1	
29	488	17.77	55.2	
30	506	14.60	43.7	
31	523	37.04	107.4	
32	649	37.30	87.0	
33	888	41.69	71.1	
34	▶ 10,380	75.00	10.9	Upper Marker

Region table for sample 4 : #19 sRNA PCR 1:4 (6/25/12) 15 cyc

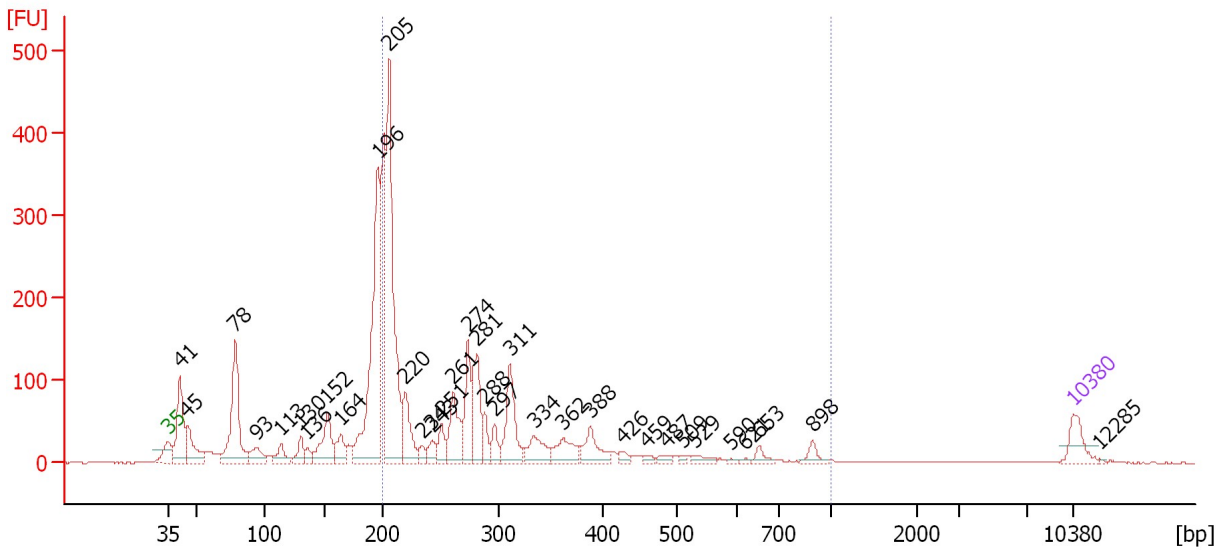
From [bp]	To [bp]	Average Size [bp]	Molarity [pmol/l]	Conc. [pg/μl]	Corr. Area	% of Total	Size distribution in CV [%]	Color
200	1,000	302	37,744.4	6,609.89	2,640.7	60	42.2	

Assay Class: High Sensitivity DNA Assay
 Data Path: C:\...ents and Settings\Bioanalyzer\2012-06-27\2012-06-27_002.xad

Created: 6/27/2012 10:17:00 AM
 Modified: 6/27/2012 10:58:20 AM

Electropherogram Summary Continued ...

#56 sRNA PCR 1:5 (6/25/12) 15 cyc



Overall Results for sample 5 : #56 sRNA PCR 1:5 (6/25/12) 15 cyc

Number of peaks found: 34 Corr. Area 1: 1,940.2
 Noise: 0.3

Peak table for sample 5 : #56 sRNA PCR 1:5 (6/25/12) 15 cyc

Peak	Size [bp]	Conc. [pg/μl]	Molarity [pmol/l]	Observations
1	35	125.00	5,411.3	Lower Marker
2	41	342.52	12,549.3	
3	45	202.28	6,812.8	
4	78	521.43	10,120.7	
5	93	97.65	1,589.7	
6	113	78.13	1,044.9	
7	130	77.81	906.0	
8	136	40.12	448.4	
9	152	213.39	2,120.7	
10	164	97.67	902.1	
11	196	962.32	7,445.4	
12	205	1,105.93	8,156.4	
13	220	209.11	1,442.6	
14	234	39.94	258.8	
15	243	55.40	345.5	
16	251	82.59	498.5	
17	261	219.17	1,274.0	
18	274	219.13	1,212.4	
19	281	243.55	1,311.2	
20	288	73.27	385.4	
21	297	68.97	352.3	
22	311	251.74	1,227.1	
23	334	122.10	554.3	
24	362	119.47	500.5	
25	388	120.77	471.7	
26	426	23.52	83.7	

Assay Class: High Sensitivity DNA Assay
 Data Path: C:\...ents and Settings\Bioanalyzer\2012-06-27\2012-06-27_002.xad

Created: 6/27/2012 10:17:00 AM
 Modified: 6/27/2012 10:58:20 AM

Electropherogram Summary Continued ...

... Peak table for sample 5 : #56 sRNA PCR 1:5 (6/25/12) 15 cyc

Peak	Size [bp]	Conc. [pg/μl]	Molarity [pmol/l]	Observations
27	459	14.20	46.8	
28	487	22.57	70.2	
29	509	10.12	30.1	
30	529	29.07	83.3	
31	590	6.71	17.2	
32	621	6.04	14.7	
33	653	30.12	69.8	
34	898	35.04	59.1	
35	10,380	75.00	10.9	Upper Marker
36	12,285	0.00	0.0	

Region table for sample 5 : #56 sRNA PCR 1:5 (6/25/12) 15 cyc

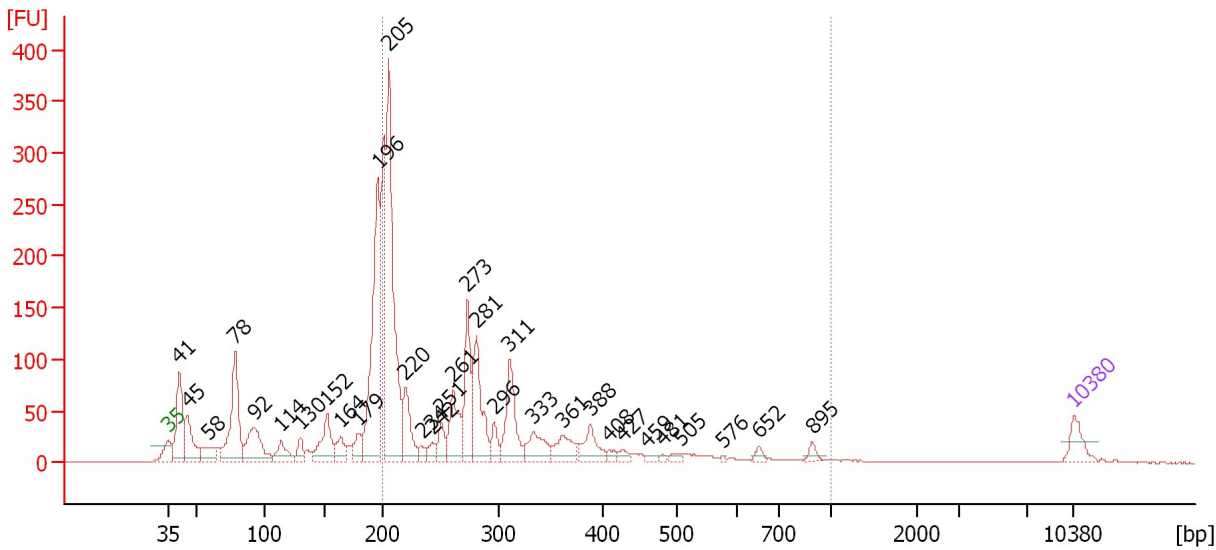
From [bp]	To [bp]	Average Size [bp]	Molarity [pmol/l]	Conc. [pg/μl]	Corr. Area	% of Total	Size distribution in CV [%]	Color
200	1,000	297	20,821.0	3,553.86	1,940.2	58	44.4	

Assay Class: High Sensitivity DNA Assay
 Data Path: C:\...ents and Settings\Bioanalyzer\2012-06-27\2012-06-27_002.xad

Created: 6/27/2012 10:17:00 AM
 Modified: 6/27/2012 10:58:20 AM

Electropherogram Summary Continued ...

#36 sRNA PCR 1:5 (6/25/12) 15 cyc



Overall Results for sample 6 : #36 sRNA PCR 1:5 (6/25/12) 15 cyc

Number of peaks found: 32 Corr. Area 1: 1,613.1
 Noise: 0.3

Peak table for sample 6 : #36 sRNA PCR 1:5 (6/25/12) 15 cyc

Peak	Size [bp]	Conc. [pg/μl]	Molarity [pmol/l]	Observations
1	35	125.00	5,411.3	Lower Marker
2	41	416.73	15,466.3	
3	45	249.37	8,374.6	
4	58	122.47	3,207.4	
5	78	551.62	10,737.2	
6	92	309.35	5,084.7	
7	114	123.12	1,642.9	
8	130	74.88	875.4	
9	152	240.06	2,389.6	
10	164	96.41	890.9	
11	179	95.49	807.0	
12	196	926.63	7,176.1	
13	205	1,262.09	9,310.8	
14	220	245.30	1,691.3	
15	234	41.96	272.1	
16	242	53.17	332.4	
17	251	93.17	563.4	
18	261	246.70	1,433.1	
19	273	322.66	1,789.8	
20	281	378.82	2,040.0	
21	296	80.09	409.6	
22	311	307.26	1,499.0	
23	333	153.85	699.6	
24	361	131.36	551.4	
25	388	132.31	517.3	
26	408	24.86	92.3	

Assay Class: High Sensitivity DNA Assay
Data Path: C:\...ents and Settings\Bioanalyzer\2012-06-27\2012-06-27_002.xad


Created: 6/27/2012 10:17:00 AM
Modified: 6/27/2012 10:58:20 AM

Electropherogram Summary Continued ...

... Peak table for sample 6 : #36 sRNA PCR 1:5 (6/25/12) 15 cyc

Peak	Size [bp]	Conc. [pg/μl]	Molarity [pmol/l]	Observations
27	427	28.27	100.4	
28	459	16.28	53.8	
29	481	9.85	31.0	
30	505	19.74	59.2	
31	576	5.28	13.9	
32	652	23.16	53.8	
33	895	27.14	45.9	
34	▶ 10,380	75.00	10.9	Upper Marker

Region table for sample 6 : #36 sRNA PCR 1:5 (6/25/12) 15 cyc

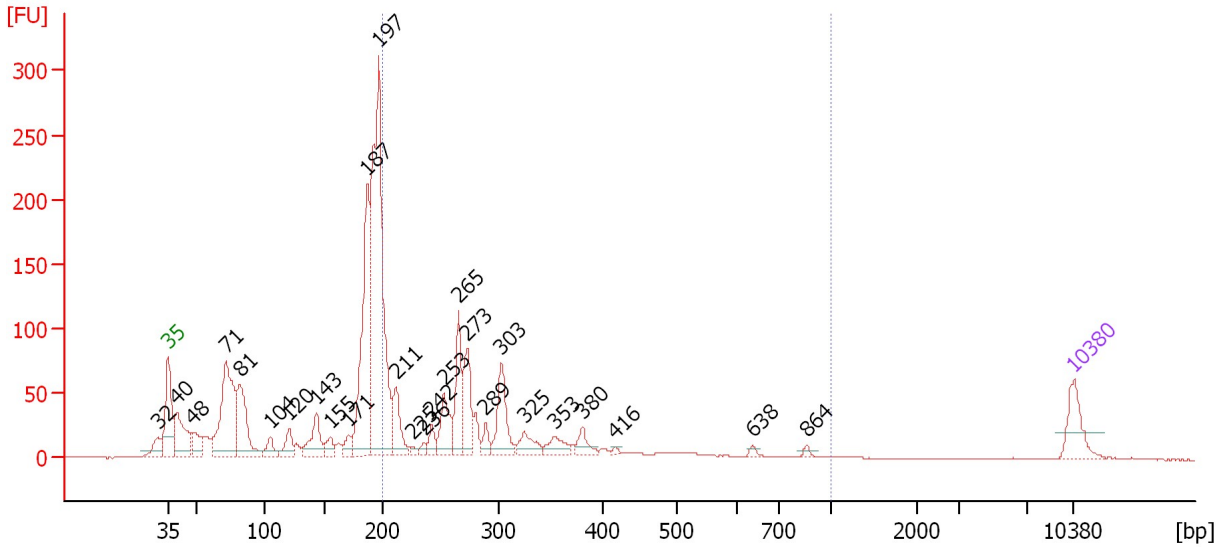
From [bp]	To [bp]	Average Size [bp]	Molarity [pmol/l]	Conc. [pg/μl]	Corr. Area	% of Total	Size distribution in CV [%]	Color
200	1,000	300	24,265.5	4,196.42	1,613.1	57	43.3	

Assay Class: High Sensitivity DNA Assay
 Data Path: C:\...ents and Settings\Bioanalyzer\2012-06-27\2012-06-27_002.xad

Created: 6/27/2012 10:17:00 AM
 Modified: 6/27/2012 10:58:20 AM

Electropherogram Summary Continued ...

#34 sRNA PCR 1:10 (6/25/12) 15 cyc



Overall Results for sample 7 : #34 sRNA PCR 1:10 (6/25/12) 15 cyc

Number of peaks found: 27 Corr. Area 1: 826.1
 Noise: 0.2

Peak table for sample 7 : #34 sRNA PCR 1:10 (6/25/12) 15 cyc

Peak	Size [bp]	Conc. [pg/μl]	Molarity [pmol/l]	Observations
1	32	0.00	0.0	
2	35	125.00	5,411.3	Lower Marker
3	40	188.40	7,192.1	
4	48	80.34	2,529.0	
5	71	417.91	8,881.7	
6	81	233.75	4,346.4	
7	104	43.34	630.1	
8	120	57.22	722.0	
9	143	110.31	1,167.9	
10	155	39.04	381.7	
11	171	35.89	318.7	
12	187	508.97	4,129.2	
13	197	960.34	7,398.7	
14	211	117.53	842.7	
15	225	12.22	82.1	
16	236	16.47	105.8	
17	242	36.11	225.9	
18	253	114.94	687.8	
19	265	158.92	907.8	
20	273	138.76	769.9	
21	289	33.60	176.3	
22	303	140.03	701.0	
23	325	56.63	264.3	
24	353	44.88	192.4	
25	380	37.77	150.6	
26	416	5.93	21.6	

Assay Class: High Sensitivity DNA Assay
 Data Path: C:\...ents and Settings\Bioanalyzer\2012-06-27\2012-06-27_002.xad

Created: 6/27/2012 10:17:00 AM
 Modified: 6/27/2012 10:58:20 AM

Electropherogram Summary Continued ...

... Peak table for sample 7 : #34 sRNA PCR 1:10 (6/25/12) 15 cyc

Peak	Size [bp]	Conc. [pg/μl]	Molarity [pmol/l]	Observations
27	638	7.22	17.1	
28	864	9.01	15.8	
29	10,380	75.00	10.9	Upper Marker

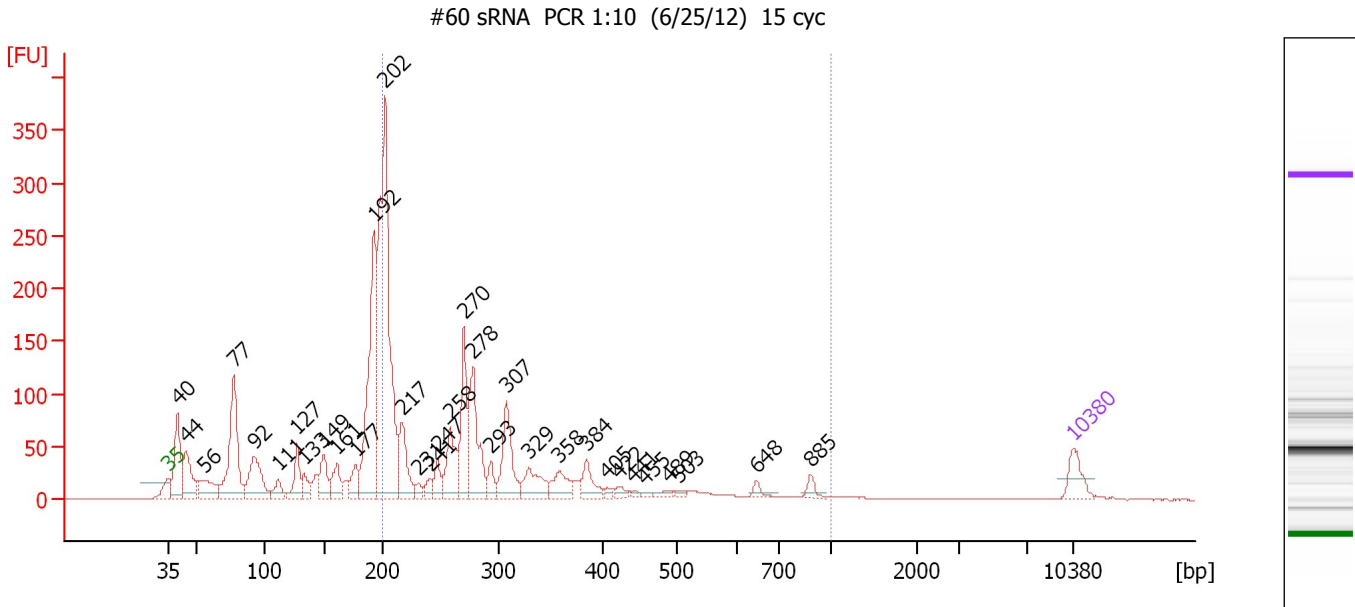
Region table for sample 7 : #34 sRNA PCR 1:10 (6/25/12) 15 cyc

From [bp]	To [bp]	Average Size [bp]	Molarity [pmol/l]	Conc. [pg/μl]	Corr. Area	% of Total	Size distribution in CV [%]	Color
200	1,000	315	7,898.7	1,445.33	826.1	38	41.0	

Assay Class: High Sensitivity DNA Assay
 Data Path: C:\...ents and Settings\Bioanalyzer\2012-06-27\2012-06-27_002.xad

Created: 6/27/2012 10:17:00 AM
 Modified: 6/27/2012 10:58:20 AM

Electropherogram Summary Continued ...



Overall Results for sample 8 : #60 sRNA PCR 1:10 (6/25/12) 15 cyc

Number of peaks found: 33 Corr. Area 1: 1,437.7
 Noise: 0.2

Peak table for sample 8 : #60 sRNA PCR 1:10 (6/25/12) 15 cyc

Peak	Size [bp]	Conc. [pg/μl]	Molarity [pmol/l]	Observations
1	35	125.00	5,411.3	Lower Marker
2	40	339.58	12,872.2	
3	44	234.43	8,014.5	
4	56	165.04	4,497.6	
5	77	556.92	10,934.1	
6	92	289.32	4,780.3	
7	111	70.89	969.9	
8	127	146.50	1,754.5	
9	133	78.18	893.2	
10	149	136.93	1,388.8	
11	161	117.46	1,107.0	
12	177	100.08	857.6	
13	192	813.62	6,408.9	
14	202	1,524.20	11,421.5	
15	217	219.74	1,536.0	
16	231	32.20	210.9	
17	241	44.49	280.0	
18	247	77.37	473.7	
19	258	209.26	1,227.1	
20	270	298.45	1,672.7	
21	278	354.60	1,931.7	
22	293	67.64	349.5	
23	307	259.72	1,279.9	
24	329	136.38	628.7	
25	358	109.32	462.8	
26	384	93.00	367.2	

Assay Class: High Sensitivity DNA Assay
 Data Path: C:\...ents and Settings\Bioanalyzer\2012-06-27\2012-06-27_002.xad

Created: 6/27/2012 10:17:00 AM
 Modified: 6/27/2012 10:58:20 AM

Electropherogram Summary Continued ...

... Peak table for sample 8 : #60 sRNA PCR 1:10 (6/25/12) 15 cyc

Peak	Size [bp]	Conc. [pg/μl]	Molarity [pmol/l]	Observations
27	405	18.29	68.4	
28	422	27.10	97.4	
29	441	11.99	41.3	
30	455	10.88	36.2	
31	489	21.53	66.8	
32	503	14.78	44.5	
33	648	25.12	58.8	
34	885	28.73	49.2	
35	▶ 10,380	75.00	10.9	Upper Marker

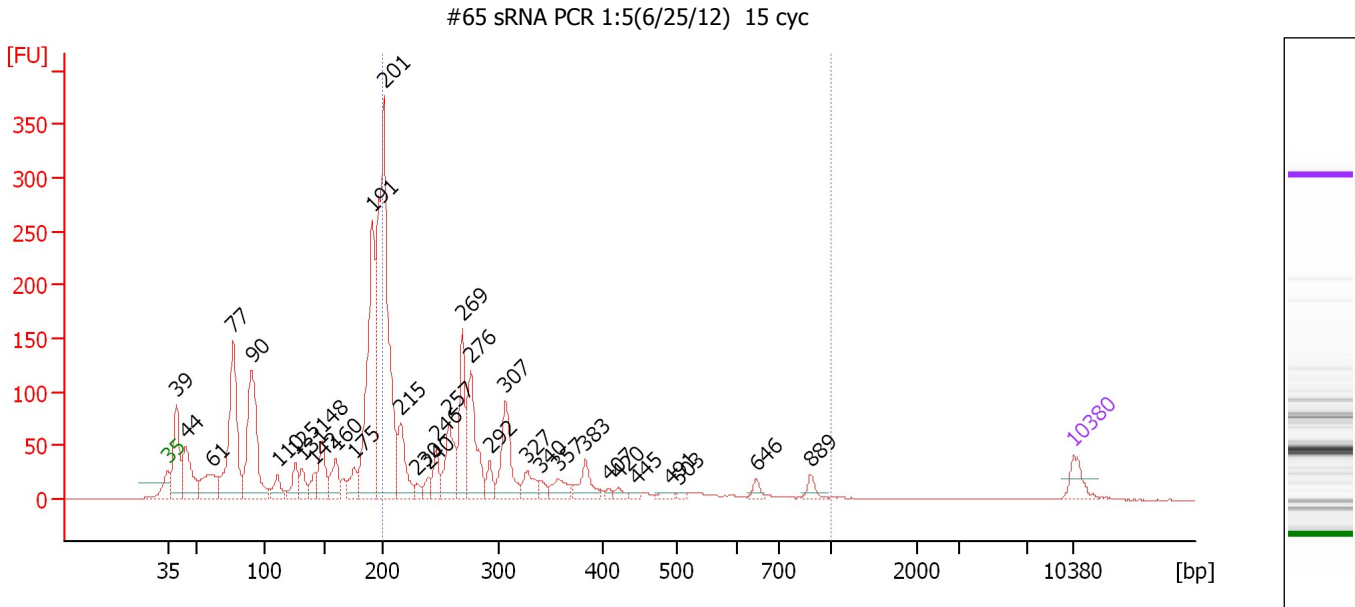
Region table for sample 8 : #60 sRNA PCR 1:10 (6/25/12) 15 cyc

From [bp]	To [bp]	Average Size [bp]	Molarity [pmol/l]	Conc. [pg/μl]	Corr. Area	% of Total	Size distribution in CV [%]	Color
200	1,000	309	18,876.8	3,334.66	1,437.7	51	44.2	

Assay Class: High Sensitivity DNA Assay
 Data Path: C:\...ents and Settings\Bioanalyzer\2012-06-27\2012-06-27_002.xad

Created: 6/27/2012 10:17:00 AM
 Modified: 6/27/2012 10:58:20 AM

Electropherogram Summary Continued ...



Overall Results for sample 9 : #65 sRNA PCR 1:5(6/25/12) 15 cyc

Number of peaks found: 34 Corr. Area 1: 1,327.6
 Noise: 0.3

Peak table for sample 9 : #65 sRNA PCR 1:5(6/25/12) 15 cyc

Peak	Size [bp]	Conc. [pg/μl]	Molarity [pmol/l]	Observations
1	35	125.00	5,411.3	Lower Marker
2	39	443.47	17,063.5	
3	44	352.96	12,135.1	
4	61	256.58	6,362.9	
5	77	869.50	17,196.5	
6	90	800.63	13,492.4	
7	110	105.52	1,448.9	
8	125	129.04	1,561.7	
9	131	97.90	1,133.8	
10	142	76.74	818.3	
11	148	215.98	2,215.5	
12	160	158.63	1,505.4	
13	175	113.27	979.1	
14	191	1,022.65	8,093.3	
15	201	1,838.77	13,872.1	
16	215	263.59	1,853.3	
17	230	37.48	247.3	
18	240	54.04	341.7	
19	246	111.42	686.6	
20	257	272.50	1,604.1	
21	269	348.08	1,961.2	
22	276	409.59	2,246.6	
23	292	80.11	415.0	
24	307	315.03	1,556.2	
25	327	101.42	469.2	
26	340	37.35	166.6	

Assay Class: High Sensitivity DNA Assay
 Data Path: C:\...ents and Settings\Bioanalyzer\2012-06-27\2012-06-27_002.xad


Created: 6/27/2012 10:17:00 AM
 Modified: 6/27/2012 10:58:20 AM

Electropherogram Summary Continued ...

... Peak table for sample 9 : #65 sRNA PCR 1:5(6/25/12) 15 cyc

Peak	Size [bp]	Conc. [pg/μl]	Molarity [pmol/l]	Observations
27	357	89.83	381.3	
28	383	125.01	494.6	
29	407	15.07	56.1	
30	420	26.19	94.5	
31	445	15.93	54.3	
32	491	21.19	65.4	
33	503	10.53	31.7	
34	646	29.78	69.9	
35	889	35.04	59.7	
36	▶ 10,380	75.00	10.9	Upper Marker

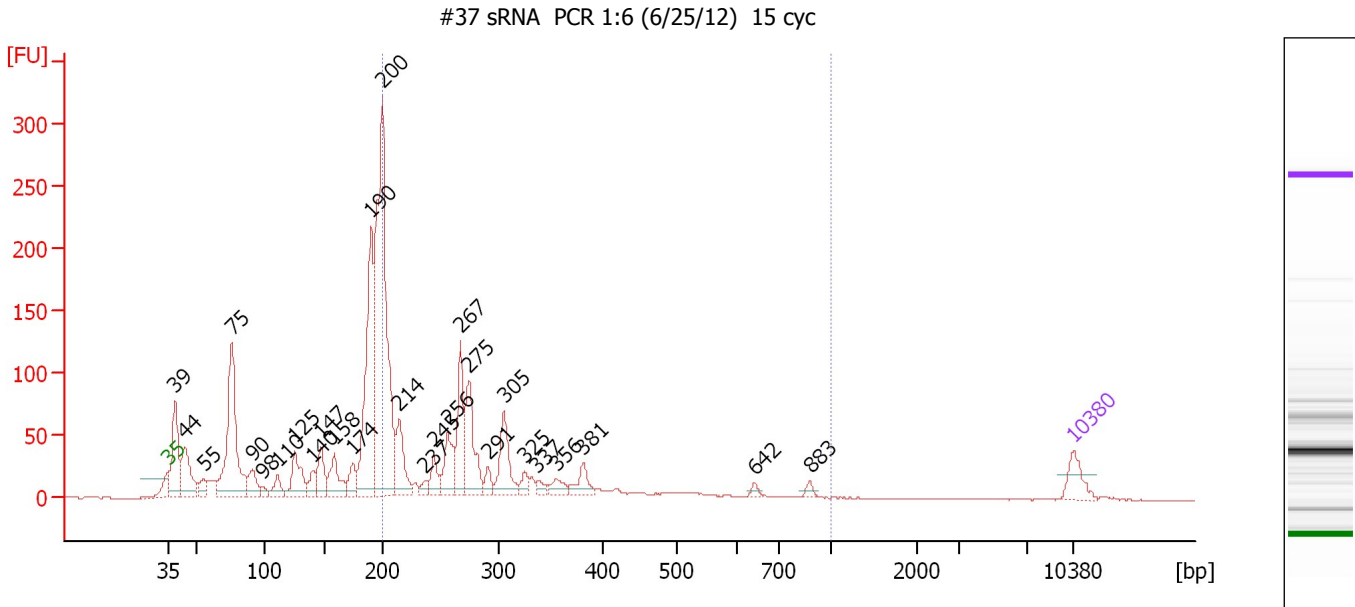
Region table for sample 9 : #65 sRNA PCR 1:5(6/25/12) 15 cyc

From [bp]	To [bp]	Average Size [bp]	Molarity [pmol/l]	Conc. [pg/μl]	Corr. Area	% of Total	Size distribution in CV [%]	Color
200	1,000	305	21,725.7	3,800.86	1,327.6	45	44.7	

Assay Class: High Sensitivity DNA Assay
 Data Path: C:\...ents and Settings\Bioanalyzer\2012-06-27\2012-06-27_002.xad

Created: 6/27/2012 10:17:00 AM
 Modified: 6/27/2012 10:58:20 AM

Electropherogram Summary Continued ...



Overall Results for sample 10 : #37 sRNA PCR 1:6 (6/25/12) 15 cyc

Number of peaks found: 28 Corr. Area 1: 1,008.2
 Noise: 0.2

Peak table for sample 10 : #37 sRNA PCR 1:6 (6/25/12) 15 cyc

Peak	Size [bp]	Conc. [pg/μl]	Molarity [pmol/l]	Observations
1	35	125.00	5,411.3	Lower Marker
2	39	369.97	14,472.7	
3	44	283.82	9,838.3	
4	55	73.96	2,030.5	
5	75	780.06	15,659.9	
6	90	113.34	1,898.2	
7	98	31.29	481.7	
8	110	77.85	1,068.8	
9	125	197.95	2,396.9	
10	140	78.24	844.3	
11	147	140.37	1,446.6	
12	158	164.14	1,570.4	
13	174	98.36	856.9	
14	190	790.92	6,307.4	
15	200	1,504.70	11,408.1	
16	214	220.06	1,555.0	
17	237	36.45	233.2	
18	245	83.94	519.8	
19	256	181.82	1,075.7	
20	267	277.08	1,572.2	
21	275	293.40	1,617.4	
22	291	48.71	253.6	
23	305	214.96	1,067.8	
24	325	42.06	196.0	
25	337	25.88	116.3	
26	356	49.19	209.6	

Assay Class: High Sensitivity DNA Assay
 Data Path: C:\...ents and Settings\Bioanalyzer\2012-06-27\2012-06-27_002.xad


Created: 6/27/2012 10:17:00 AM
 Modified: 6/27/2012 10:58:20 AM

Electropherogram Summary Continued ...

... Peak table for sample 10 : #37 sRNA PCR 1:6 (6/25/12) 15 cyc

Peak	Size [bp]	Conc. [pg/μl]	Molarity [pmol/l]	Observations
27	381	73.13	291.0	
28	642	16.62	39.2	
29	883	18.84	32.3	
30	10,380	75.00	10.9	Upper Marker

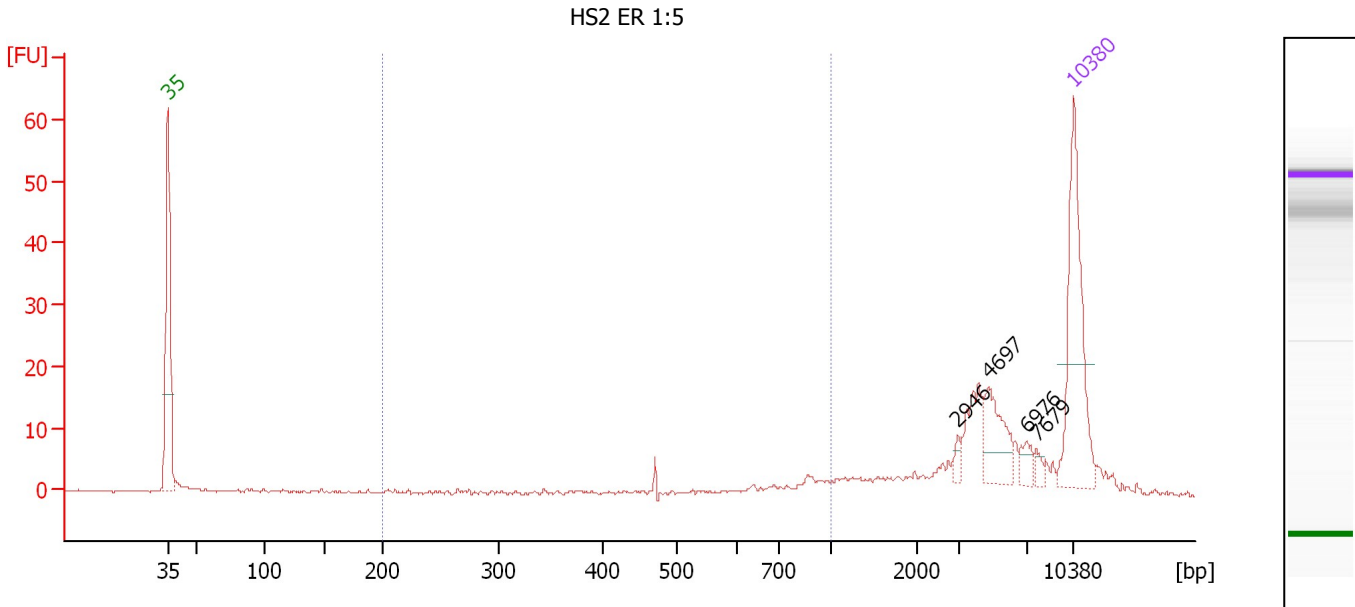
Region table for sample 10 : #37 sRNA PCR 1:6 (6/25/12) 15 cyc

From [bp]	To [bp]	Average Size [bp]	Molarity [pmol/l]	Conc. [pg/μl]	Corr. Area	% of Total	Size distribution in CV [%]	Color
200	1,000	301	15,872.1	2,773.54	1,008.2	44	42.6	

Assay Class: High Sensitivity DNA Assay
 Data Path: C:\...ents and Settings\Bioanalyzer\2012-06-27\2012-06-27_002.xad

Created: 6/27/2012 10:17:00 AM
 Modified: 6/27/2012 10:58:20 AM

Electropherogram Summary Continued ...



Overall Results for sample 11 : HS2 ER 1:5

Number of peaks found: 4 Corr. Area 1: 11.3
 Noise: 0.2

Peak table for sample 11 : HS2 ER 1:5

Peak	Size [bp]	Conc. [pg/μl]	Molarity [pmol/l]	Observations
1	35	125.00	5,411.3	Lower Marker
2	2,946	5.28	2.7	
3	4,697	30.33	9.8	
4	6,976	8.23	1.8	
5	7,679	4.20	0.8	
6	10,380	75.00	10.9	Upper Marker

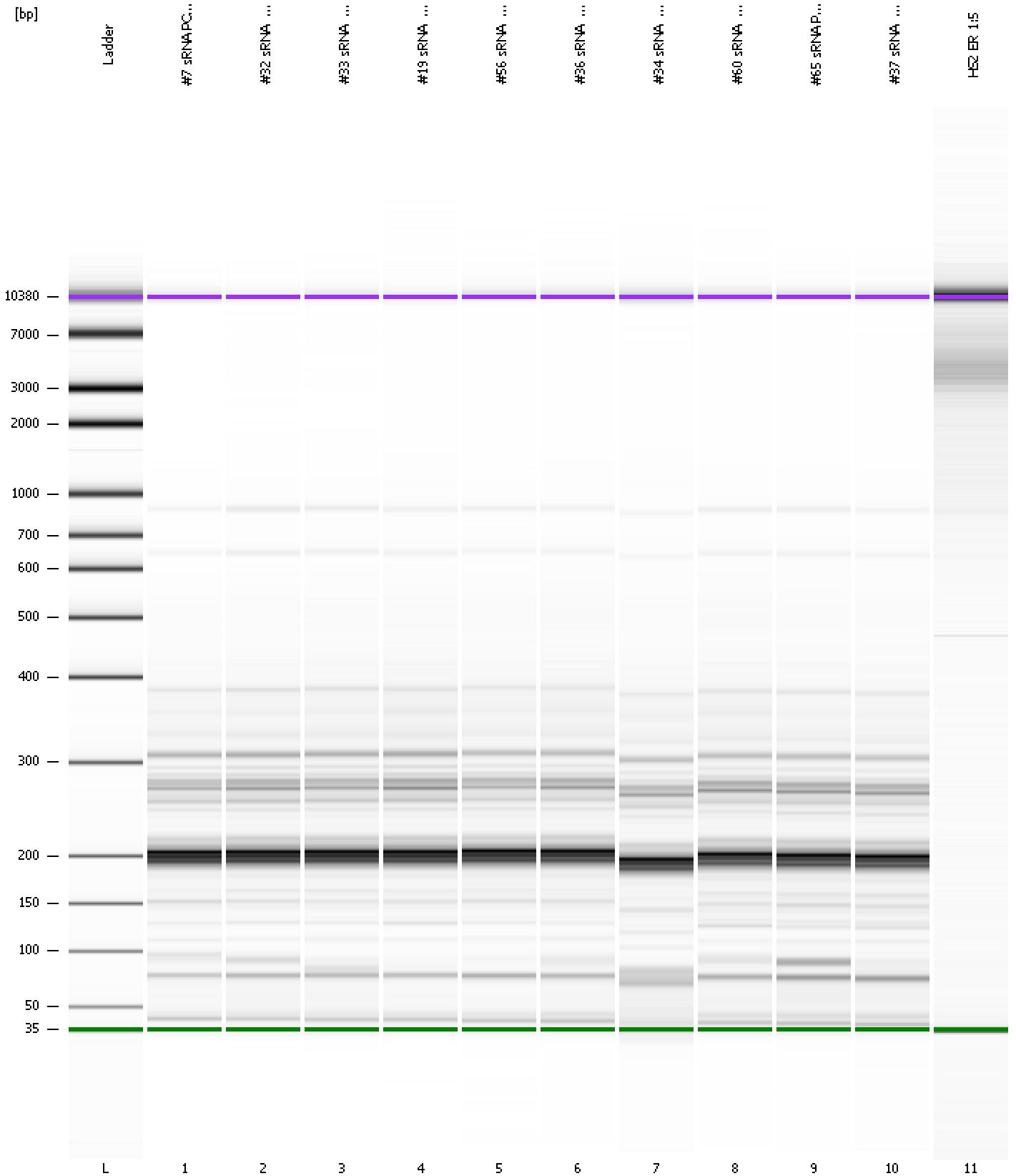
Region table for sample 11 : HS2 ER 1:5

From [bp]	To [bp]	Average Size [bp]	Molarity [pmol/l]	Conc. [pg/μl]	Corr. Area	% of Total	Size distribution in CV [%]	Color
200	1,000	747	38.6	16.71	11.3	9	24.7	Blue

Assay Class: High Sensitivity DNA Assay
Data Path: C:\...ents and Settings\Bioanalyzer\2012-06-27\2012-06-27_002.xad

Created: 6/27/2012 10:17:00 AM
Modified: 6/27/2012 10:58:20 AM

Gel Image



Assay Class: High Sensitivity DNA Assay
 Data Path: C:\...ents and Settings\Bioanalyzer\2012-06-27\2012-06-27_002.xad

Created: 6/27/2012 10:17:00 AM
 Modified: 6/27/2012 10:58:20 AM

Run Logbook

Description	Number	Source	Category	Sub Category	Time	Time Zone	User	Host
Run ended on port 1 (Number of wells acquired: 12)		Instrument	Run		6/27/2012 10:58:17 AM	(GMT --07:00) Pacific Standard Time	UC Davis	D8XSMGH1
Run started on port 1 (File: C:\Documents and Settings\Bioanalyzer\2012-06-27\2012-06-27_002.xad)		Instrument	Run		6/27/2012 10:17:06 AM	(GMT --07:00) Pacific Standard Time	UC Davis	D8XSMGH1
Product Number : G2938B		Instrument	Run		6/27/2012 10:17:06 AM	(GMT --07:00) Pacific Standard Time	UC Davis	D8XSMGH1
Name :		Instrument	Run		6/27/2012 10:17:06 AM	(GMT --07:00) Pacific Standard Time	UC Davis	D8XSMGH1
Vendor : Agilent Technologies		Instrument	Run		6/27/2012 10:17:06 AM	(GMT --07:00) Pacific Standard Time	UC Davis	D8XSMGH1
Serial# : DE13701086		Instrument	Run		6/27/2012 10:17:06 AM	(GMT --07:00) Pacific Standard Time	UC Davis	D8XSMGH1
Firmware : C.01.069		Instrument	Run		6/27/2012 10:17:06 AM	(GMT --07:00) Pacific Standard Time	UC Davis	D8XSMGH1
Cartridge : Electrode		Instrument	Run		6/27/2012 10:17:06 AM	(GMT --07:00) Pacific Standard Time	UC Davis	D8XSMGH1