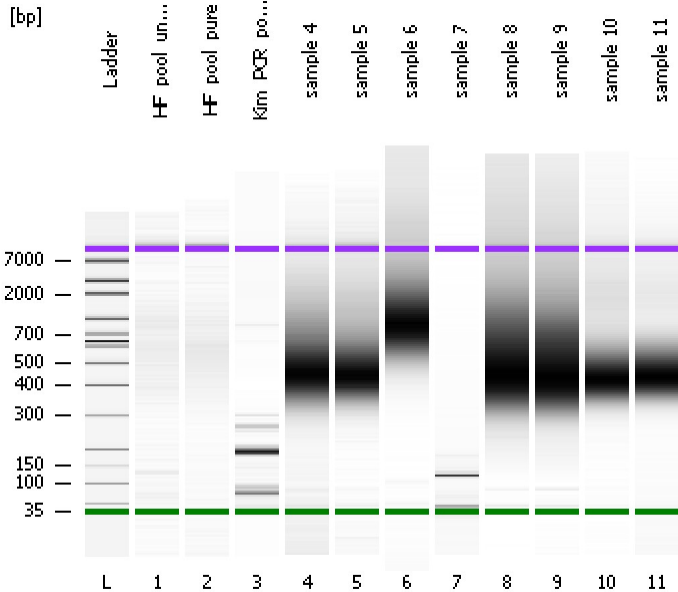


Assay Class: High Sensitivity DNA Assay  
Data Path: C:\...ents and Settings\Bioanalyzer\2012-06-27\2012-06-27\_006.xad

Created: 6/27/2012 3:22:22 PM  
Modified: 6/27/2012 4:05:24 PM

**Electrophoresis File Run Summary**



Instrument Information:

Instrument Name: DE13701086      Firmware: C.01.069  
Serial#: DE13701086      Type: G2938B

Assay Information:

Assay Origin Path: C:\Program Files\Agilent\2100 bioanalyzer\2100 expert\assays\dsDNA\High Sensitivity DNA.xsy  
Assay Class: High Sensitivity DNA Assay  
Version: 1.03  
Assay Comments: Copyright © 2003-2010 Agilent Technologies

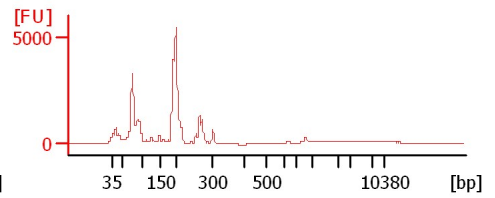
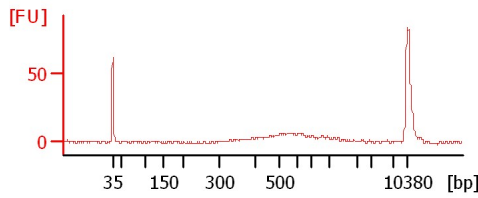
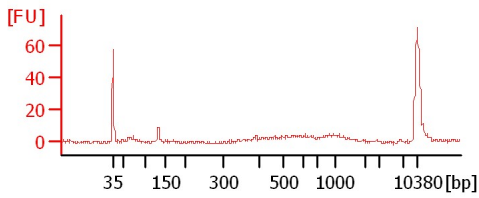
Chip Information:

Chip Lot #:   
Reagent Kit Lot #:   
Chip Comments:

HF\_pool\_unpure

HF\_pool\_pure

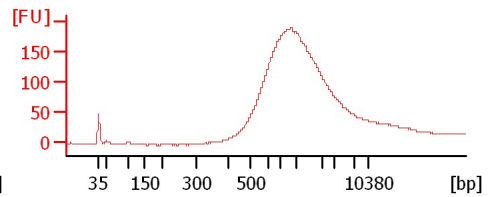
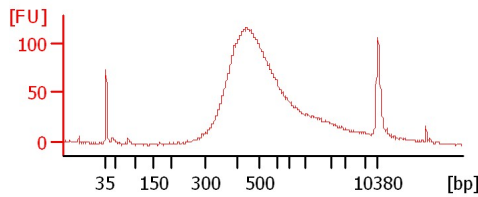
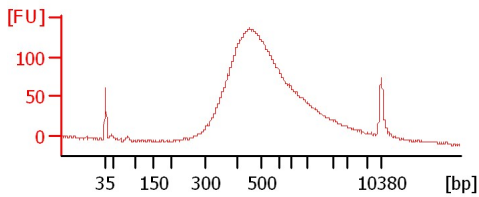
Kim\_PCR\_pool\_6/27/12



sample 4

sample 5

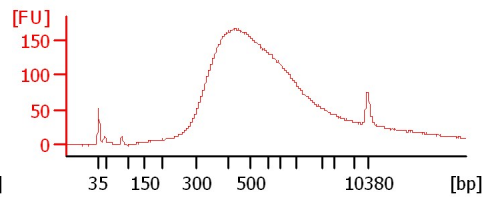
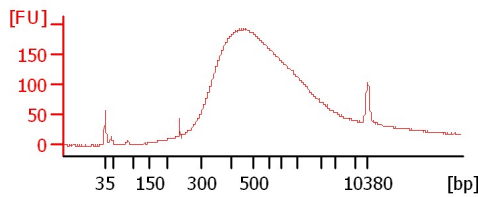
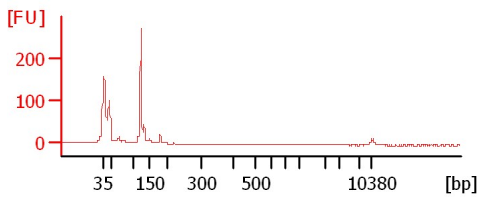
sample 6



sample 7

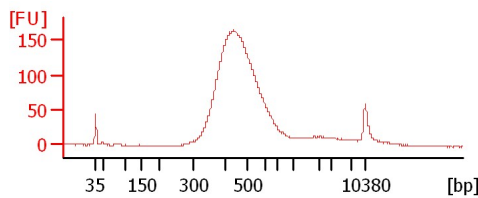
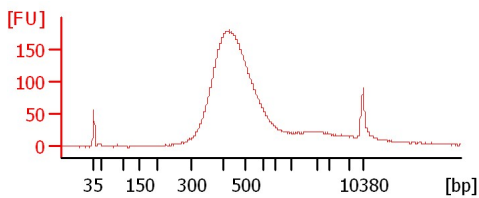
sample 8

sample 9



sample 10

sample 11



Assay Class: High Sensitivity DNA Assay  
 Data Path: C:\...ents and Settings\Bioanalyzer\2012-06-27\2012-06-27\_006.xad

Created: 6/27/2012 3:22:22 PM  
 Modified: 6/27/2012 4:05:24 PM

**Electrophoresis File Run Summary (Chip Summary)**

Sample Name	Sample Comment	Rest. Digest	Status	Observation	Result Label	Result Color
HF_pool_unpure		<input type="checkbox"/>	✓			
HF_pool_pure		<input type="checkbox"/>	✓			
Kim_PCR_pool_6/27/12		<input type="checkbox"/>	✓			
sample 4		<input type="checkbox"/>	✓			
sample 5		<input type="checkbox"/>	✓			
sample 6		<input type="checkbox"/>	✓			
sample 7		<input type="checkbox"/>	✓			
sample 8		<input type="checkbox"/>	✓			
sample 9		<input type="checkbox"/>	✓			
sample 10		<input type="checkbox"/>	✓			
sample 11		<input type="checkbox"/>	✓			
Ladder		<input type="checkbox"/>	✓			

**Chip Lot #**

**Reagent Kit Lot #**

**Chip Comments :**

Assay Class: High Sensitivity DNA Assay  
Data Path: C:\...ents and Settings\Bioanalyzer\2012-06-27\2012-06-27\_006.xad

Created: 6/27/2012 3:22:22 PM  
Modified: 6/27/2012 4:05:24 PM

## Electrophoresis Assay Details

### General Analysis Settings

Number of Available Sample and Ladder Wells (Max.) : 12  
Minimum Visible Range [s] : 32  
Maximum Visible Range [s] : 138  
Start Analysis Time Range [s] : 33  
End Analysis Time Range [s] : 137.5  
Ladder Concentration [pg/ $\mu$ l] : 1950  
Uses Standard Area for Ladder Fragments  
Lower Marker Concentration [pg/ $\mu$ l] : 125  
Upper Marker Concentration [pg/ $\mu$ l] : 75  
Used Upper Marker for Quantitation  
Standard Curve Fit is Point to Point  
Show Data Aligned to Lower and Upper Marker

### Integrator Settings

Integration Start Time [s] : 33.05  
Integration End Time [s] : 137  
Slope Threshold : 0.8  
Height Threshold [FU] : 5  
Area Threshold : 0.1  
Width Threshold [s] : 0.6  
Baseline Plateau [s] : 0.5

### Filter Settings

Filter Width [s] : 0.5  
Polynomial Order : 4

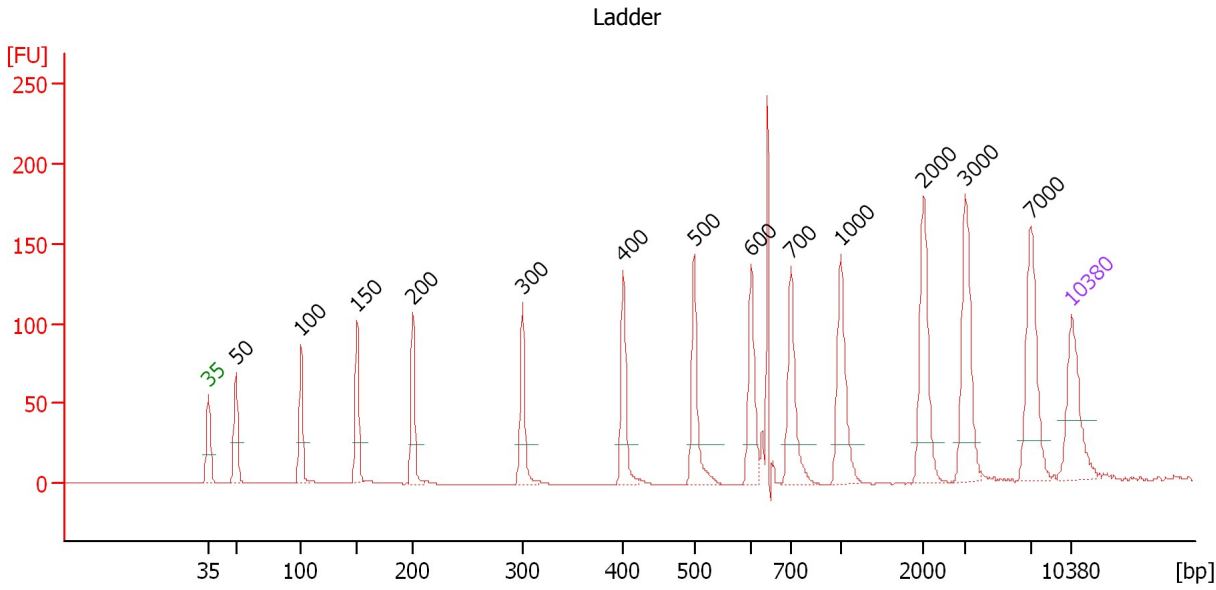
### Ladder

Ladder Peak	Size	Area
1	35	160
2	50	210
3	100	208
4	150	221
5	200	242
6	300	270
7	400	305
8	500	306
9	600	336
10	700	321
11	1000	366
12	2000	413
13	3000	411
14	7000	400
15	10380	214

Assay Class: High Sensitivity DNA Assay  
 Data Path: C:\...ents and Settings\Bioanalyzer\2012-06-27\2012-06-27\_006.xad

Created: 6/27/2012 3:22:22 PM  
 Modified: 6/27/2012 4:05:24 PM

**Electropherogram Summary**



**Overall Results for Ladder**

Noise: 0.1

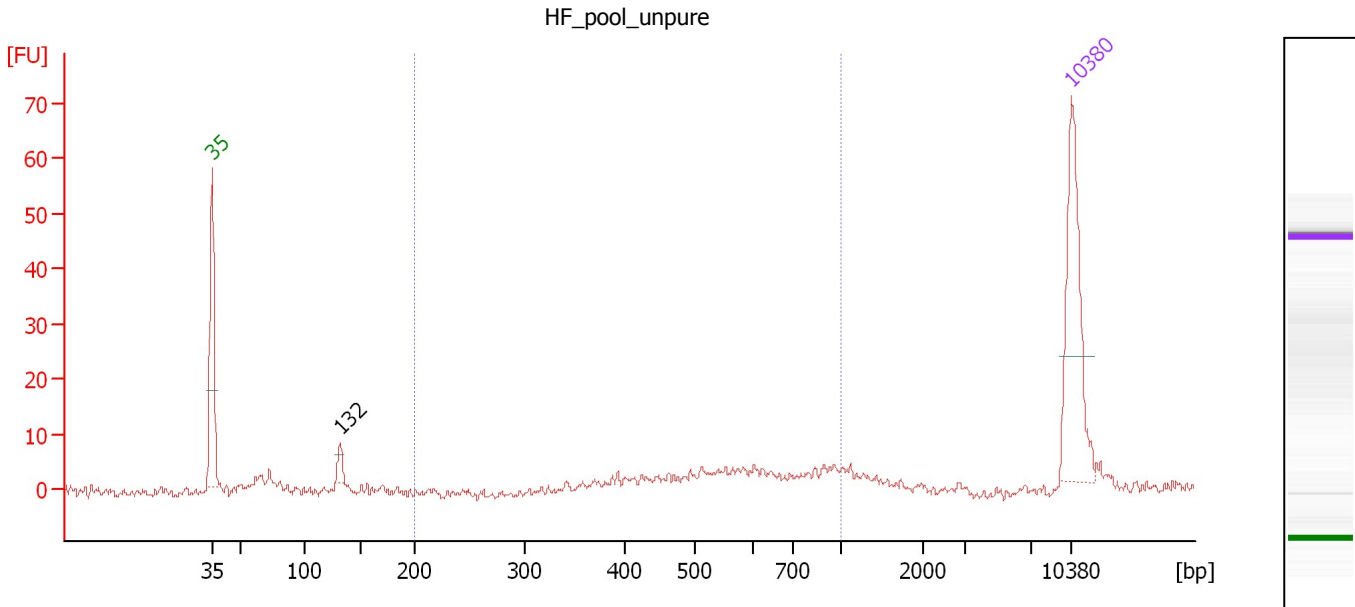
**Peak table for Ladder**

Peak	Size [bp]	Conc. [pg/μl]	Molarity [pmol/l]	Observations
1	35	125.00	5,411.3	Lower Marker
2	50	150.00	4,545.5	Ladder Peak
3	100	150.00	2,272.7	Ladder Peak
4	150	150.00	1,515.2	Ladder Peak
5	200	150.00	1,136.4	Ladder Peak
6	300	150.00	757.6	Ladder Peak
7	400	150.00	568.2	Ladder Peak
8	500	150.00	454.5	Ladder Peak
9	600	150.00	378.8	Ladder Peak
10	700	150.00	324.7	Ladder Peak
11	1,000	150.00	227.3	Ladder Peak
12	2,000	150.00	113.6	Ladder Peak
13	3,000	150.00	75.8	Ladder Peak
14	7,000	150.00	32.5	Ladder Peak
15	10,380	75.00	10.9	Upper Marker

Assay Class: High Sensitivity DNA Assay  
 Data Path: C:\...ents and Settings\Bioanalyzer\2012-06-27\2012-06-27\_006.xad

Created: 6/27/2012 3:22:22 PM  
 Modified: 6/27/2012 4:05:24 PM

**Electropherogram Summary Continued ...**



**Overall Results for sample 1 : HF\_pool\_unpure**

Number of peaks found: 1                      Corr. Area 1: 54.5  
 Noise: 1.0

**Peak table for sample 1 : HF\_pool\_unpure**

Peak	Size [bp]	Conc. [pg/μl]	Molarity [pmol/l]	Observations
1	35	125.00	5,411.3	Lower Marker
2	132	11.43	130.8	
3	10,380	75.00	10.9	Upper Marker

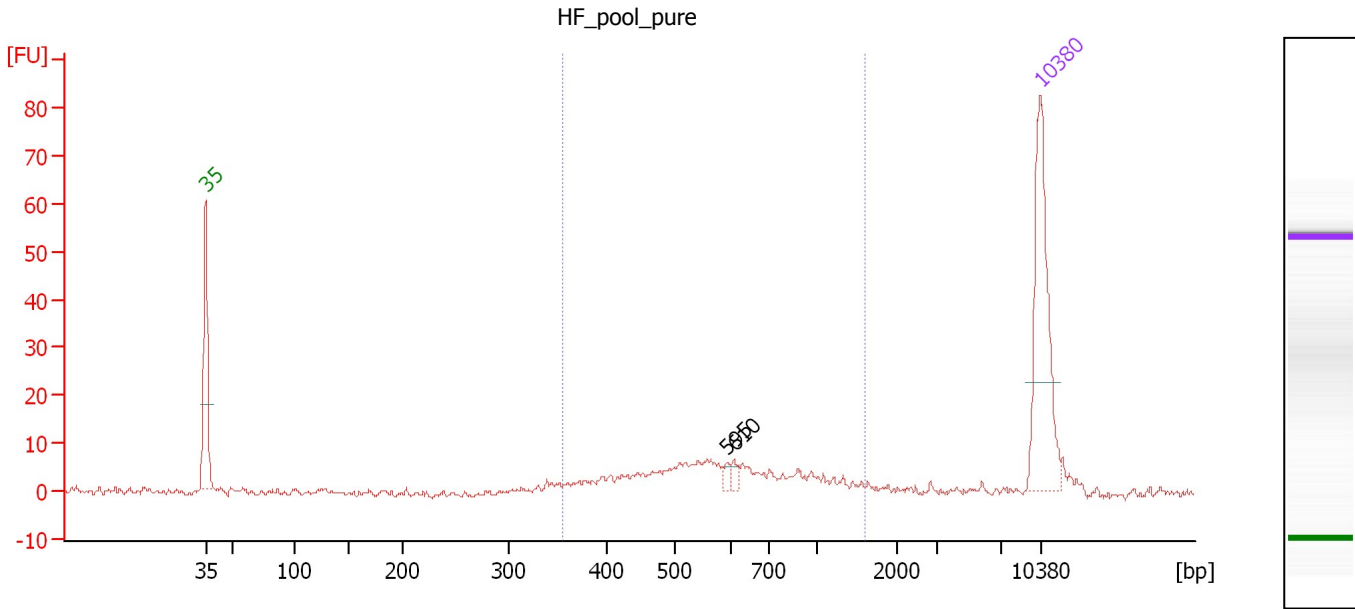
**Region table for sample 1 : HF\_pool\_unpure**

From [bp]	To [bp]	Average Size [bp]	Molarity [pmol/l]	Conc. [pg/μl]	Corr. Area	% of Total	Size distribution in CV [%]	Color
200	1,000	607	189.6	68.77	54.5	62	28.1	Blue

Assay Class: High Sensitivity DNA Assay  
 Data Path: C:\...ents and Settings\Bioanalyzer\2012-06-27\2012-06-27\_006.xad

Created: 6/27/2012 3:22:22 PM  
 Modified: 6/27/2012 4:05:24 PM

**Electropherogram Summary Continued ...**



**Overall Results for sample 2 : HF\_pool\_pure**

Number of peaks found: 2                      Corr. Area 1: 103.9  
 Noise: 0.6

**Peak table for sample 2 : HF\_pool\_pure**

Peak	Size [bp]	Conc. [pg/μl]	Molarity [pmol/l]	Observations
1	35	125.00	5,411.3	Lower Marker
2	595	3.64	9.3	
3	610	4.99	12.4	
4	10,380	75.00	10.9	Upper Marker

**Region table for sample 2 : HF\_pool\_pure**

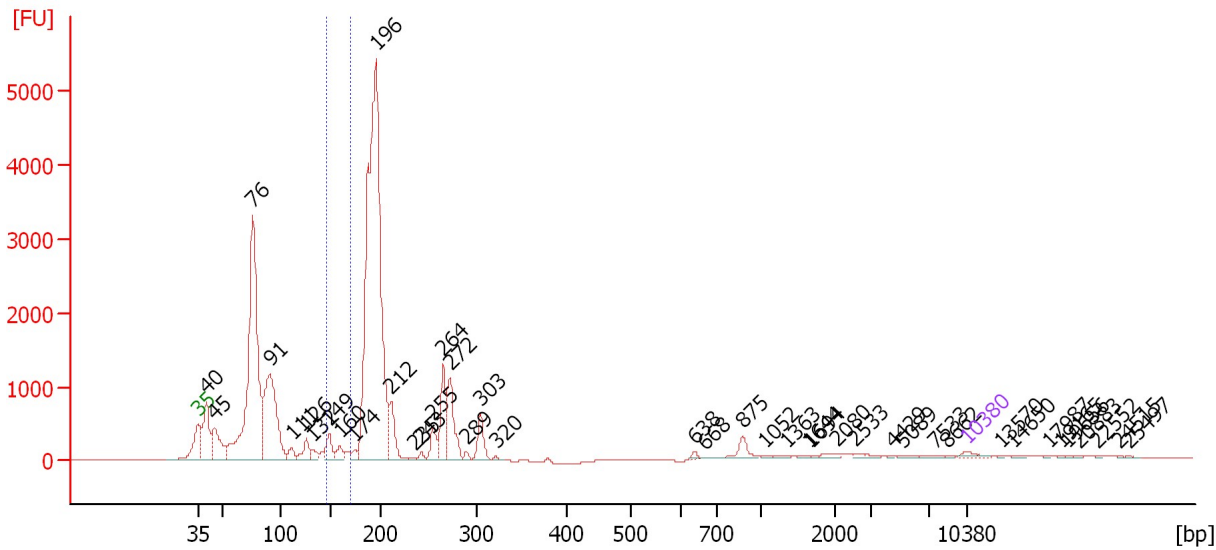
From [bp]	To [bp]	Average Size [bp]	Molarity [pmol/l]	Conc. [pg/μl]	Corr. Area	% of Total	Size distribution in CV [%]	Color
354	1,604	633	296.4	108.31	103.9	85	37.6	Blue

Assay Class: High Sensitivity DNA Assay  
 Data Path: C:\...ents and Settings\Bioanalyzer\2012-06-27\2012-06-27\_006.xad

Created: 6/27/2012 3:22:22 PM  
 Modified: 6/27/2012 4:05:24 PM

**Electropherogram Summary Continued ...**

Kim\_PCR\_pool\_6/27/12



**Overall Results for sample 3 : Kim PCR pool 6/27/12**

Number of peaks found: 42                      Corr. Area 1: 695.5  
 Noise: 0.9

**Peak table for sample 3 : Kim PCR pool 6/27/12**


Peak	Size [bp]	Conc. [pg/μl]	Molarity [pmol/l]	Observations
1	35	125.00	5,411.3	Lower Marker
2	40	1,389.05	52,405.4	
3	45	1,041.41	35,065.5	
4	76	7,760.13	154,938.3	
5	91	3,456.13	57,830.4	
6	111	223.20	3,050.8	
7	126	369.75	4,454.8	
8	132	170.48	1,962.6	
9	149	417.03	4,250.6	
10	160	224.15	2,123.6	
11	174	135.72	1,178.9	
12	196	12,249.95	94,464.9	
13	212	719.18	5,148.6	
14	235	29.90	192.8	
15	243	77.64	484.9	
16	255	385.84	2,296.9	
17	264	930.26	5,333.1	
18	272	1,033.00	5,756.6	
19	289	59.14	310.4	
20	303	470.68	2,353.0	
21	320	22.23	105.2	
22	638	50.38	119.6	
23	668	9.68	22.0	
24	875	237.84	412.0	
25	1,052	33.32	48.0	
26	1,363	43.82	48.7	

Assay Class: High Sensitivity DNA Assay  
 Data Path: C:\...ents and Settings\Bioanalyzer\2012-06-27\2012-06-27\_006.xad


Created: 6/27/2012 3:22:22 PM  
 Modified: 6/27/2012 4:05:24 PM

**Electropherogram Summary Continued ...**

**... Peak table for sample 3 : Kim PCR pool 6/27/12**

Peak	Size [bp]	Conc. [pg/μl]	Molarity [pmol/l]	Observations
27	1,644	36.10	33.3	
28	1,694	17.66	15.8	
29	2,080	56.05	40.8	
30	2,533	68.14	40.8	
31	4,429	14.97	5.1	
32	5,089	41.39	12.3	
33	7,533	42.66	8.6	
34	8,662	12.25	2.1	
35	 10,380	75.00	10.9	Upper Marker
36	13,570	0.00	0.0	
37	14,650	0.00	0.0	
38	17,987	0.00	0.0	
39	19,165	0.00	0.0	
40	19,656	0.00	0.0	
41	20,883	0.00	0.0	
42	22,552	0.00	0.0	
43	24,515	0.00	0.0	
44	25,497	0.00	0.0	

**Region table for sample 3 : Kim PCR pool 6/27/12**

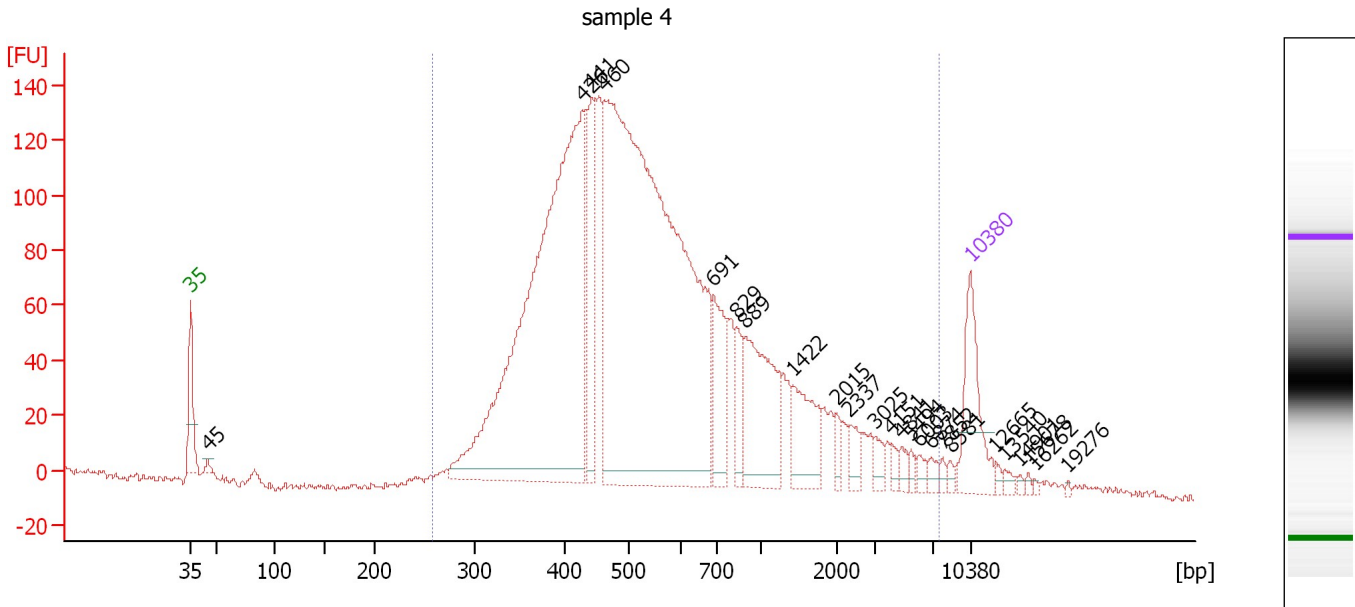
From [bp]	To [bp]	Average Size [bp]	Molarity [pmol/l]	Conc. [pg/μl]	Corr. Area	% of Total	Size distribution in CV [%]	Color
145	170	155	7,034.5	716.95	695.5	2	4.7	



Assay Class: High Sensitivity DNA Assay  
 Data Path: C:\...ents and Settings\Bioanalyzer\2012-06-27\2012-06-27\_006.xad

Created: 6/27/2012 3:22:22 PM  
 Modified: 6/27/2012 4:05:24 PM

**Electropherogram Summary Continued ...**



**Overall Results for sample 4 : sample 4**

Number of peaks found: 24                      Corr. Area 1: 3,288.6  
 Noise: 1.3

**Peak table for sample 4 : sample 4**

Peak	Size [bp]	Conc. [pg/μl]	Molarity [pmol/l]	Observations
1	35	125.00	5,411.3	Lower Marker
2	45	8.14	272.8	
3	426	944.50	3,357.8	
4	441	149.76	514.3	
5	460	1,284.06	4,226.5	
6	691	94.26	206.6	
7	829	39.45	72.1	
8	889	151.52	258.1	
9	1,422	72.15	76.9	
10	2,015	12.97	9.8	
11	2,337	17.22	11.2	
12	3,025	12.49	6.3	
13	4,151	8.72	3.2	
14	4,841	9.09	2.8	
15	5,494	6.56	1.8	
16	6,003	7.90	2.0	
17	6,874	8.54	1.9	
18	7,852	4.72	0.9	
19	8,581	5.06	0.9	
20	10,380	75.00	10.9	Upper Marker
21	12,665	0.00	0.0	
22	13,540	0.00	0.0	
23	14,901	0.00	0.0	
24	15,678	0.00	0.0	
25	16,262	0.00	0.0	
26	19,276	0.00	0.0	

Assay Class: High Sensitivity DNA Assay  
Data Path: C:\...ents and Settings\Bioanalyzer\2012-06-27\2012-06-27\_006.xad

Created: 6/27/2012 3:22:22 PM  
Modified: 6/27/2012 4:05:24 PM

**Electropherogram Summary Continued ...**

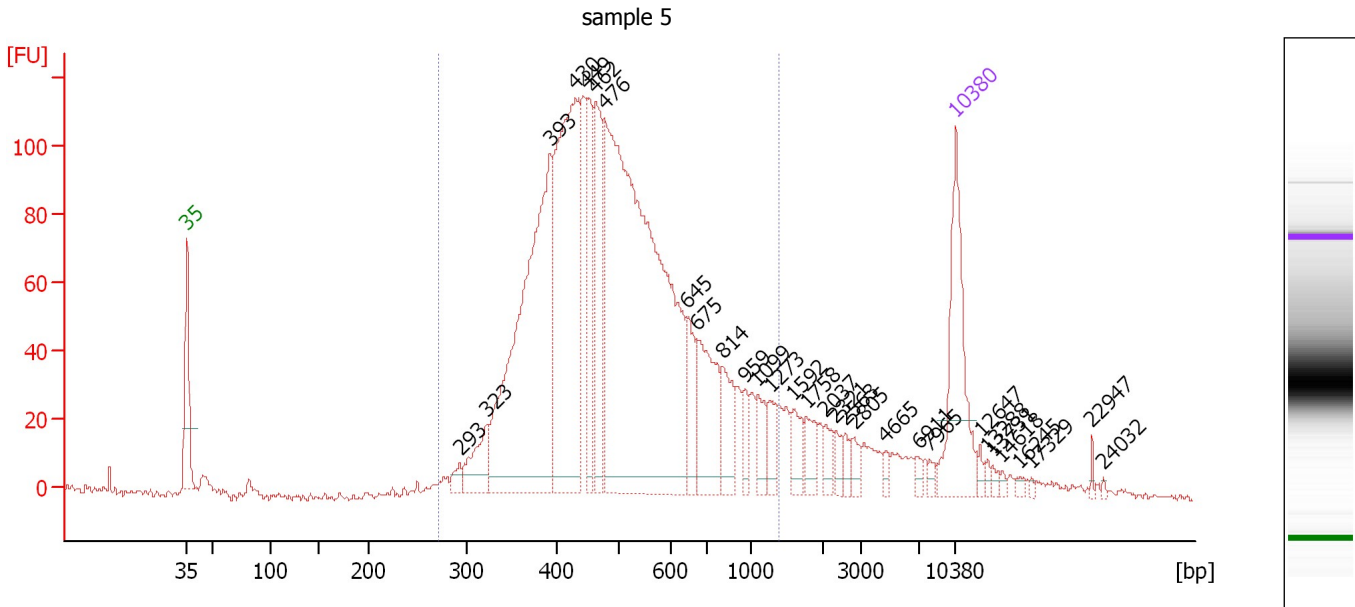
... Region table for sample 4 : sample 4

From [bp]	To [bp]	Average Size [bp]	Molarity [pmol/l]	Conc. [pg/ $\mu$ l]	Corr. Area	% of Total	Size distribution in CV [%]	Color
257	7,446	800	9,307.4	3,094.58	3,288.6	97	100.0	

Assay Class: High Sensitivity DNA Assay  
 Data Path: C:\...ents and Settings\Bioanalyzer\2012-06-27\2012-06-27\_006.xad

Created: 6/27/2012 3:22:22 PM  
 Modified: 6/27/2012 4:05:24 PM

**Electropherogram Summary Continued ...**



**Overall Results for sample 5 : sample 5**

Number of peaks found: 30                      Corr. Area 1: 2,197.5  
 Noise: 0.8

**Peak table for sample 5 : sample 5**

Peak	Size [bp]	Conc. [pg/μl]	Molarity [pmol/l]	Observations
1	35	125.00	5,411.3	Lower Marker
2	293	9.61	49.7	
3	323	38.70	181.7	
4	393	341.67	1,315.6	
5	430	274.48	968.1	
6	449	72.78	245.6	
7	462	92.18	302.5	
8	476	588.50	1,873.2	
9	645	37.43	87.9	
10	675	73.14	164.1	
11	814	36.96	68.8	
12	959	13.66	21.6	
13	1,099	17.78	24.5	
14	1,273	17.55	20.9	
15	1,592	17.31	16.5	
16	1,758	16.92	14.6	
17	2,037	10.08	7.5	
18	2,321	7.61	5.0	
19	2,563	7.58	4.5	
20	2,805	8.30	4.5	
21	4,665	4.54	1.5	
22	6,911	4.53	1.0	
23	7,965	3.68	0.7	
24	10,380	75.00	10.9	Upper Marker
25	12,647	0.00	0.0	
26	13,288	0.00	0.0	


Assay Class: High Sensitivity DNA Assay  
Data Path: C:\...ents and Settings\Bioanalyzer\2012-06-27\2012-06-27\_006.xad

Created: 6/27/2012 3:22:22 PM  
Modified: 6/27/2012 4:05:24 PM

**Electropherogram Summary Continued ...****... Peak table for sample 5 : sample 5**

Peak	Size [bp]	Conc. [pg/μl]	Molarity [pmol/l]	Observations
27	13,731	0.00	0.0	
28	14,618	0.00	0.0	
29	16,245	0.00	0.0	
30	17,329	0.00	0.0	
31	22,947	0.00	0.0	
32	24,032	0.00	0.0	

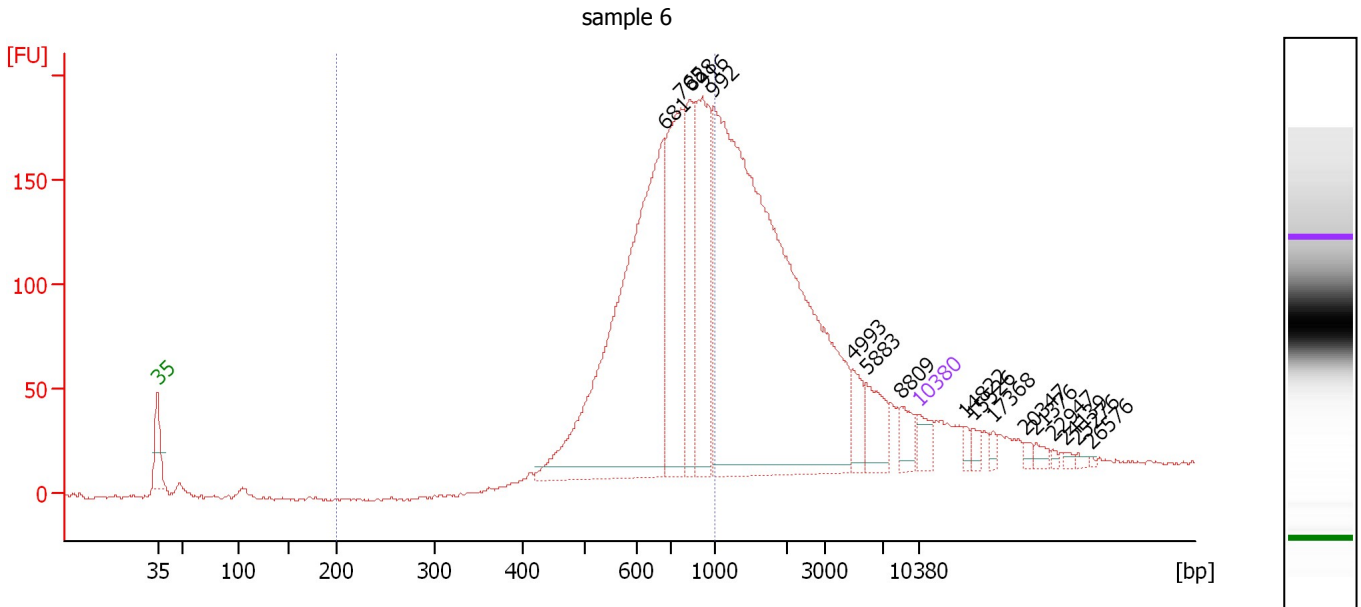
**Region table for sample 5 : sample 5**

From [bp]	To [bp]	Average Size [bp]	Molarity [pmol/l]	Conc. [pg/μl]	Corr. Area	% of Total	Size distribution in CV [%]	Color
270	1,384	527	5,534.4	1,712.42	2,197.5	88	35.9	

Assay Class: High Sensitivity DNA Assay  
 Data Path: C:\...ents and Settings\Bioanalyzer\2012-06-27\2012-06-27\_006.xad

Created: 6/27/2012 3:22:22 PM  
 Modified: 6/27/2012 4:05:24 PM

**Electropherogram Summary Continued ...**



**Overall Results for sample 6 : sample 6**

Number of peaks found: 17      Corr. Area 1: 1,671.5  
 Noise: 0.8

**Peak table for sample 6 : sample 6**

Peak	Size [bp]	Conc. [pg/μl]	Molarity [pmol/l]	Observations
1	35	125.00	5,411.3	Lower Marker
2	681	2,520.96	5,611.5	
3	765	878.93	1,741.4	
4	828	526.60	963.2	
5	916	738.67	1,221.9	
6	992	3,767.06	5,755.9	
7	4,993	115.24	35.0	
8	5,883	175.95	45.3	
9	8,809	87.15	15.0	
10	10,380	75.00	10.9	Upper Marker
11	14,822	0.00	0.0	
12	15,526	0.00	0.0	
13	17,368	0.00	0.0	
14	20,347	0.00	0.0	
15	21,376	0.00	0.0	
16	22,947	0.00	0.0	
17	24,139	0.00	0.0	
18	25,276	0.00	0.0	
19	26,576	0.00	0.0	

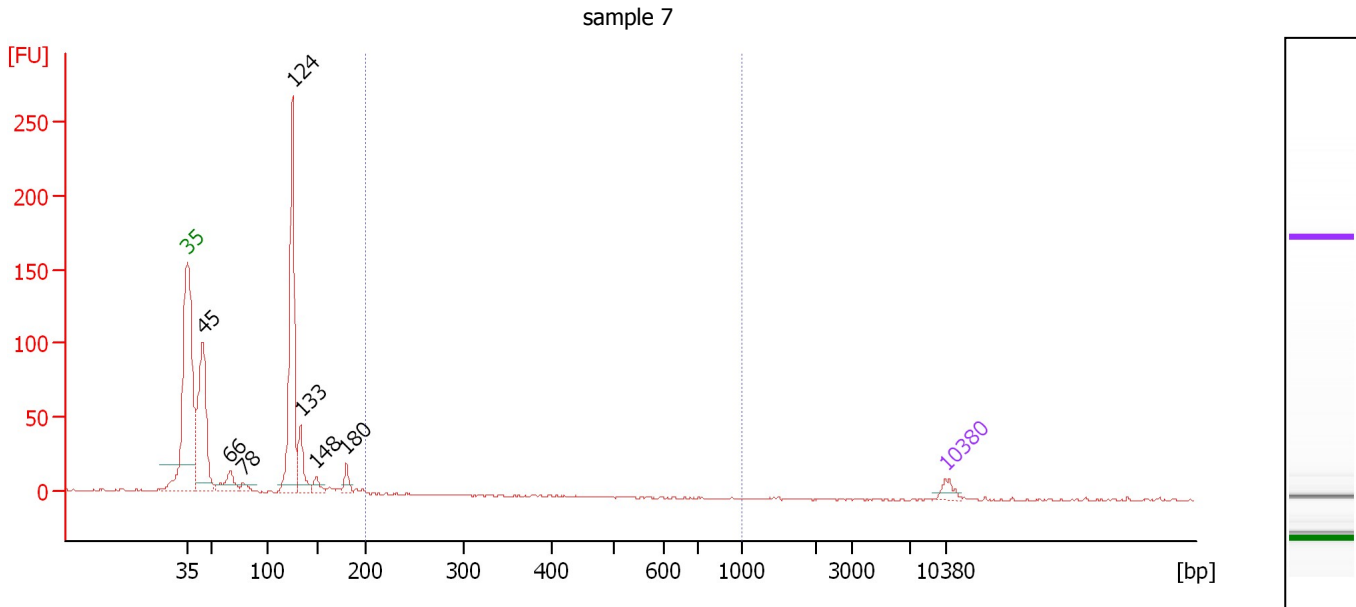
**Region table for sample 6 : sample 6**

From [bp]	To [bp]	Average Size [bp]	Molarity [pmol/l]	Conc. [pg/μl]	Corr. Area	% of Total	Size distribution in CV [%]	Color
200	1,000	711	10,989.8	4,900.86	1,671.5	50	20.4	Blue

Assay Class: High Sensitivity DNA Assay  
 Data Path: C:\...ents and Settings\Bioanalyzer\2012-06-27\2012-06-27\_006.xad

Created: 6/27/2012 3:22:22 PM  
 Modified: 6/27/2012 4:05:24 PM

**Electropherogram Summary Continued ...**



**Overall Results for sample 7 : sample 7**

Number of peaks found: 7                      Corr. Area 1: 0.0  
 Noise: 0.6

**Peak table for sample 7 : sample 7**

Peak	Size [bp]	Conc. [pg/μl]	Molarity [pmol/l]	Observations
1	35	125.00	5,411.3	Lower Marker
2	45	1,931.61	65,250.8	
3	66	299.41	6,823.5	
4	78	88.83	1,732.6	
5	124	2,359.91	28,722.0	
6	133	446.14	5,096.9	
7	148	120.97	1,235.6	
8	180	141.52	1,194.4	
9	10,380	75.00	10.9	Upper Marker

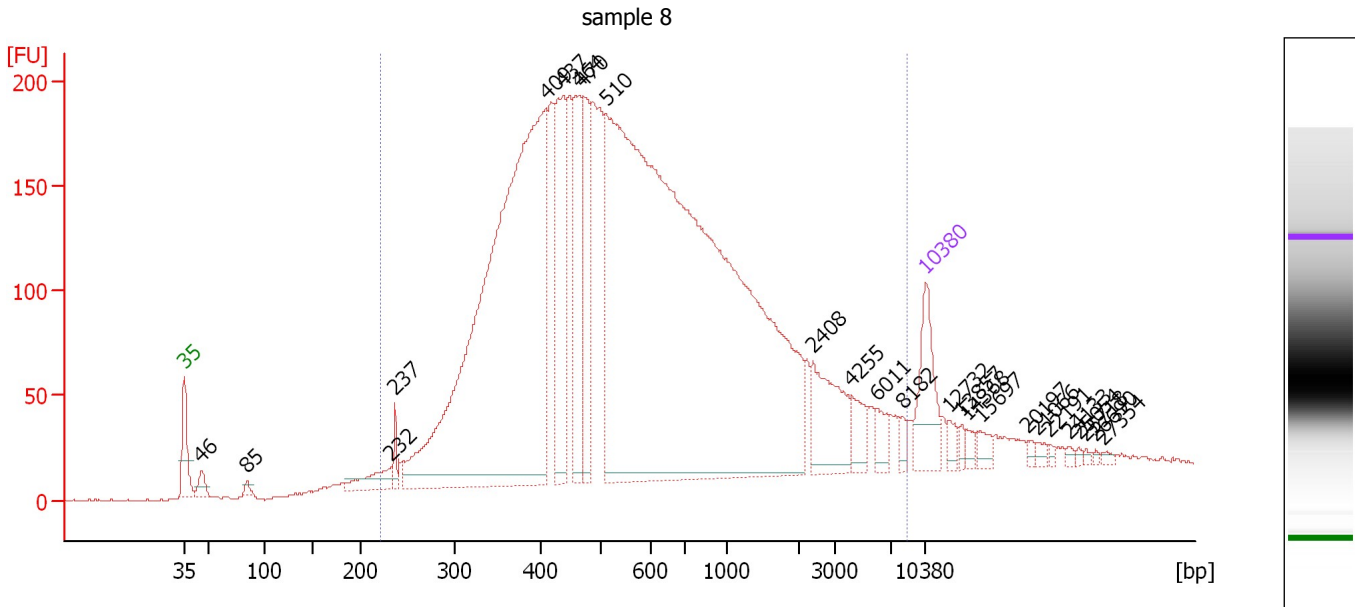
**Region table for sample 7 : sample 7**

From [bp]	To [bp]	Average Size [bp]	Molarity [pmol/l]	Conc. [pg/μl]	Corr. Area	% of Total	Size distribution in CV [%]	Color
200	1,000	199	1.0	0.14	0.0	0	0.1	Blue

Assay Class: High Sensitivity DNA Assay  
 Data Path: C:\...ents and Settings\Bioanalyzer\2012-06-27\2012-06-27\_006.xad

Created: 6/27/2012 3:22:22 PM  
 Modified: 6/27/2012 4:05:24 PM

**Electropherogram Summary Continued ...**



**Overall Results for sample 8 : sample 8**

Number of peaks found: 25                      Corr. Area 1: 5,626.7  
 Noise: 0.5

**Peak table for sample 8 : sample 8**

Peak	Size [bp]	Conc. [pg/μl]	Molarity [pmol/l]	Observations
1	35	125.00	5,411.3	Lower Marker
2	46	25.35	839.6	
3	85	9.36	166.8	
4	232	50.84	331.5	
5	237	21.44	136.8	
6	409	1,313.15	4,867.0	
7	437	217.92	755.9	
8	464	175.37	572.7	
9	470	144.51	465.8	
10	510	2,224.70	6,614.0	
11	2,408	101.67	64.0	
12	4,255	31.94	11.4	
13	6,011	23.26	5.9	
14	8,182	12.49	2.3	
15	10,380	75.00	10.9	Upper Marker
16	12,732	0.00	0.0	
17	13,857	0.00	0.0	
18	14,368	0.00	0.0	
19	15,697	0.00	0.0	
20	20,197	0.00	0.0	
21	21,066	0.00	0.0	
22	22,191	0.00	0.0	
23	24,133	0.00	0.0	
24	25,054	0.00	0.0	
25	25,718	0.00	0.0	
26	26,690	0.00	0.0	

Assay Class: High Sensitivity DNA Assay  
Data Path: C:\...ents and Settings\Bioanalyzer\2012-06-27\2012-06-27\_006.xad

Created: 6/27/2012 3:22:22 PM  
Modified: 6/27/2012 4:05:24 PM

**Electropherogram Summary Continued ...****... Peak table for sample 8 : sample 8**

Peak	Size [bp]	Conc. [pg/ $\mu$ l]	Molarity [pmol/l]	Observations
27	27,354	0.00	0.0	

**Region table for sample 8 : sample 8**

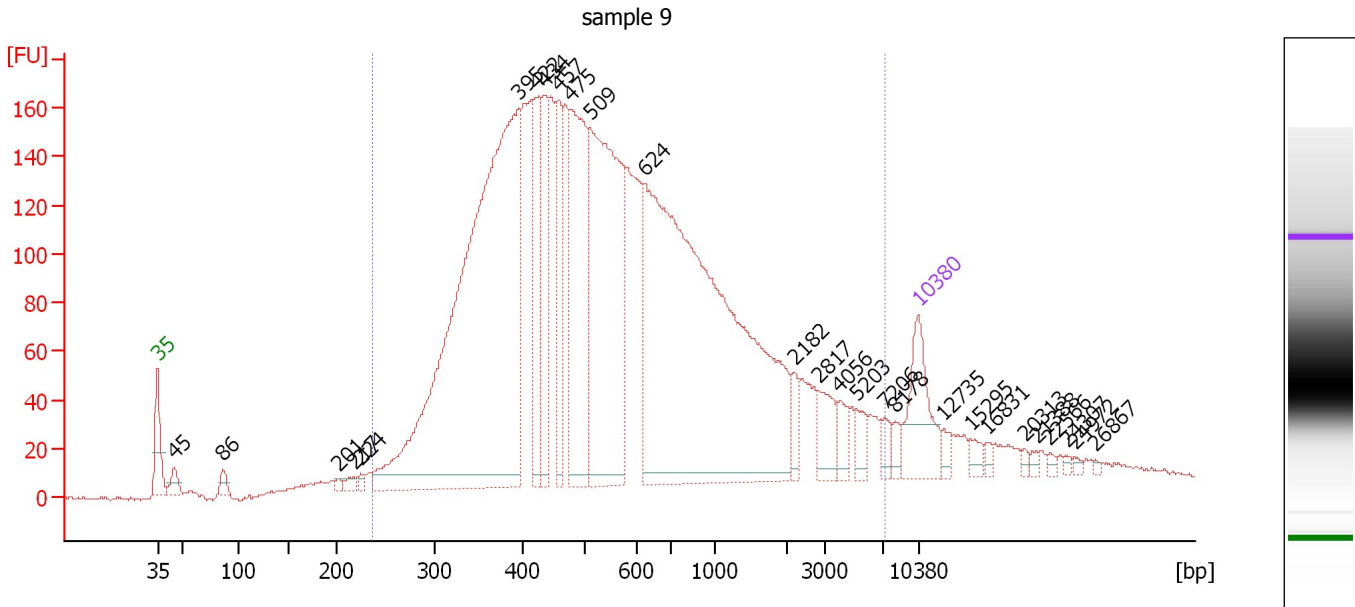
From [bp]	To [bp]	Average Size [bp]	Molarity [pmol/l]	Conc. [pg/ $\mu$ l]	Corr. Area	% of Total	Size distribution in CV [%]	Color
222	8,542	907	13,902.8	4,577.82	5,626.7	96	100.0	



Assay Class: High Sensitivity DNA Assay  
 Data Path: C:\...ents and Settings\Bioanalyzer\2012-06-27\2012-06-27\_006.xad

Created: 6/27/2012 3:22:22 PM  
 Modified: 6/27/2012 4:05:24 PM

**Electropherogram Summary Continued ...**



**Overall Results for sample 9 : sample 9**

Number of peaks found: 27      Corr. Area 1: 4,819.7  
 Noise: 0.8

**Peak table for sample 9 : sample 9**

Peak	Size [bp]	Conc. [pg/μl]	Molarity [pmol/l]	Observations
1	35	125.00	5,411.3	Lower Marker
2	45	25.89	863.6	
3	86	16.53	292.6	
4	201	6.27	47.3	
5	217	11.29	78.9	
6	224	7.35	49.7	
7	395	1,108.62	4,251.8	
8	422	124.81	448.2	
9	434	115.04	401.4	
10	457	111.04	368.1	
11	475	267.17	851.4	
12	509	482.19	1,436.2	
13	624	995.44	2,418.2	
14	2,182	18.10	12.6	
15	2,817	38.06	20.5	
16	4,056	20.39	7.6	
17	5,203	17.83	5.2	
18	7,206	14.76	3.1	
19	8,178	12.20	2.3	
20	10,380	75.00	10.9	Upper Marker
21	12,735	0.00	0.0	
22	15,295	0.00	0.0	
23	16,831	0.00	0.0	
24	20,313	0.00	0.0	
25	21,388	0.00	0.0	
26	22,566	0.00	0.0	


Assay Class: High Sensitivity DNA Assay  
Data Path: C:\...ents and Settings\Bioanalyzer\2012-06-27\2012-06-27\_006.xad

Created: 6/27/2012 3:22:22 PM  
Modified: 6/27/2012 4:05:24 PM

**Electropherogram Summary Continued ...****... Peak table for sample 9 : sample 9**

Peak	Size [bp]	Conc. [pg/ $\mu$ l]	Molarity [pmol/l]	Observations
27	24,307	0.00	0.0	
28	24,972	0.00	0.0	
29	26,867	0.00	0.0	

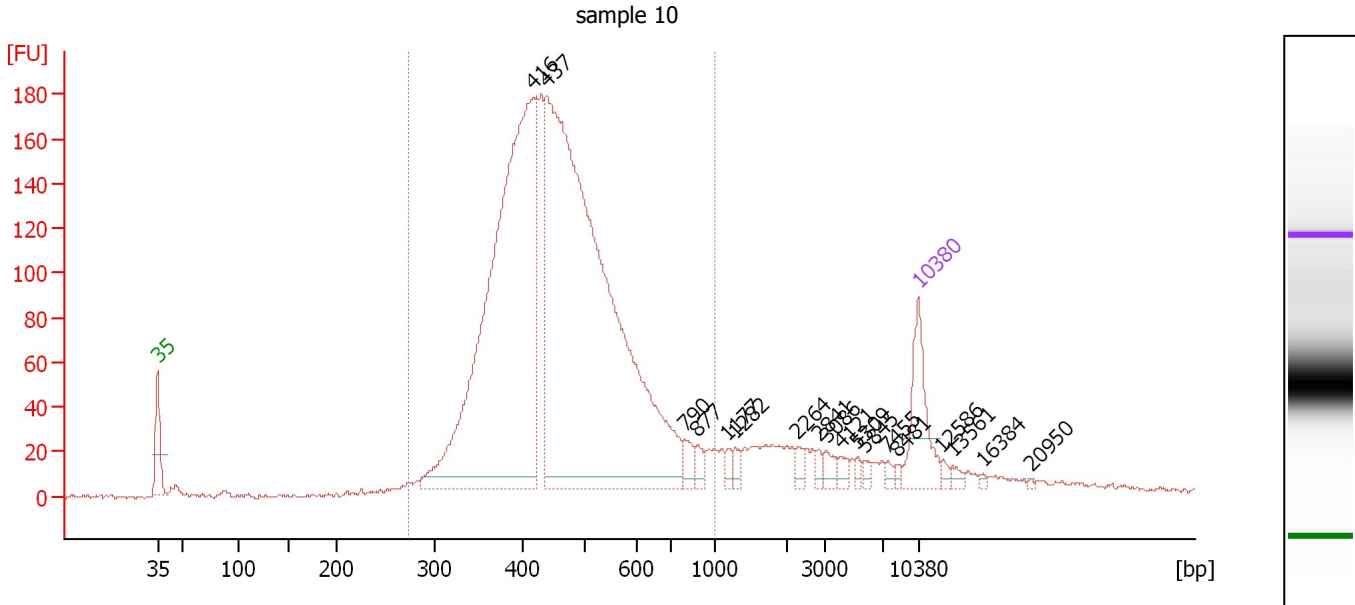
**Region table for sample 9 : sample 9**

From [bp]	To [bp]	Average Size [bp]	Molarity [pmol/l]	Conc. [pg/ $\mu$ l]	Corr. Area	% of Total	Size distribution in CV [%]	Color
235	7,290	855	12,410.2	4,022.92	4,819.7	94	100.0	

Assay Class: High Sensitivity DNA Assay  
 Data Path: C:\...ents and Settings\Bioanalyzer\2012-06-27\2012-06-27\_006.xad

Created: 6/27/2012 3:22:22 PM  
 Modified: 6/27/2012 4:05:24 PM

**Electropherogram Summary Continued ...**



**Overall Results for sample 10 : sample 10**

Number of peaks found: 18                      Corr. Area 1: 2,792.0  
 Noise: 1.0

**Peak table for sample 10 : sample 10**

Peak	Size [bp]	Conc. [pg/μl]	Molarity [pmol/l]	Observations
1	35	125.00	5,411.3	Lower Marker
2	416	1,005.27	3,659.5	
3	437	1,349.79	4,676.7	
4	790	20.50	39.3	
5	877	15.49	26.8	
6	1,177	9.12	11.7	
7	1,282	11.04	13.0	
8	2,264	10.72	7.2	
9	2,841	7.40	3.9	
10	3,086	13.32	6.5	
11	4,121	10.12	3.7	
12	5,309	5.73	1.6	
13	5,845	6.43	1.7	
14	7,455	5.91	1.2	
15	8,481	4.31	0.8	
16	10,380	75.00	10.9	Upper Marker
17	12,586	0.00	0.0	
18	13,561	0.00	0.0	
19	16,384	0.00	0.0	
20	20,950	0.00	0.0	

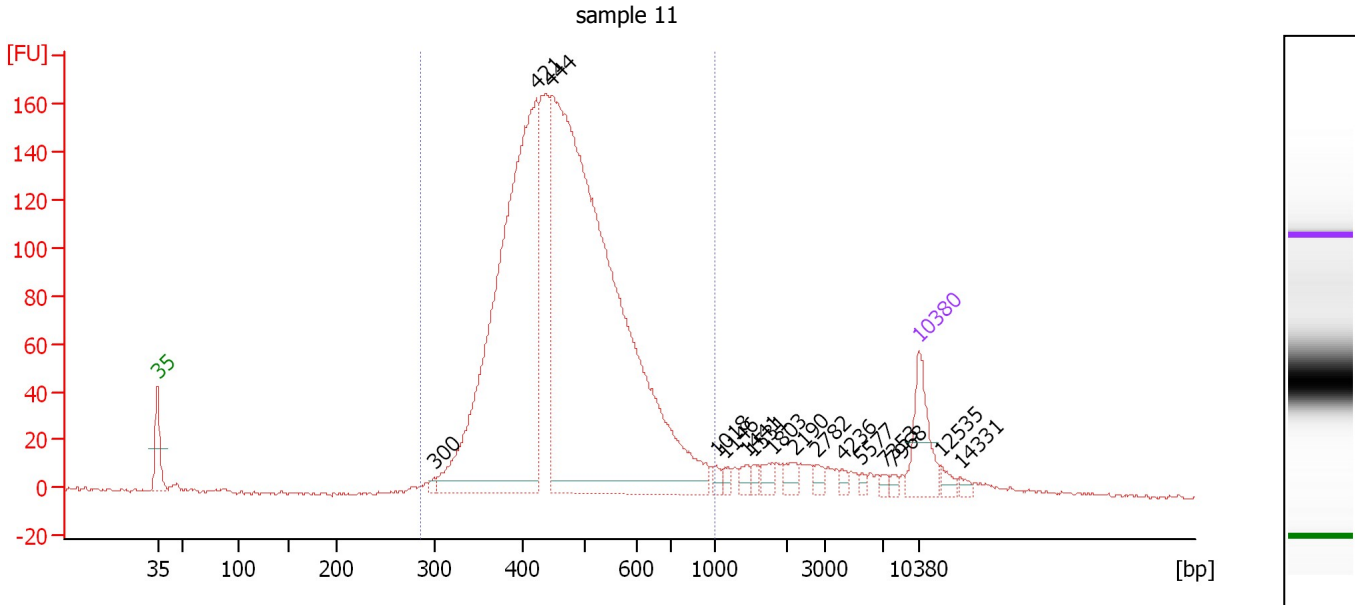
**Region table for sample 10 : sample 10**

From [bp]	To [bp]	Average Size [bp]	Molarity [pmol/l]	Conc. [pg/μl]	Corr. Area	% of Total	Size distribution in CV [%]	Color
273	1,000	469	8,918.5	2,594.95	2,792.0	88	24.0	Blue

Assay Class: High Sensitivity DNA Assay  
 Data Path: C:\...ents and Settings\Bioanalyzer\2012-06-27\2012-06-27\_006.xad

Created: 6/27/2012 3:22:22 PM  
 Modified: 6/27/2012 4:05:24 PM

**Electropherogram Summary Continued ...**



**Overall Results for sample 11 : sample 11**

Number of peaks found: 16                      Corr. Area 1: 2,502.8  
 Noise: 0.7

**Peak table for sample 11 : sample 11**

Peak	Size [bp]	Conc. [pg/μl]	Molarity [pmol/l]	Observations
1	35	125.00	5,411.3	Lower Marker
2	300	8.16	41.2	
3	421	1,134.12	4,076.9	
4	444	1,774.52	6,050.9	
5	1,018	10.08	15.0	
6	1,146	8.43	11.1	
7	1,441	12.82	13.5	
8	1,531	9.96	9.9	
9	1,803	16.69	14.0	
10	2,190	15.86	11.0	
11	2,782	12.14	6.6	
12	4,236	6.91	2.5	
13	5,577	5.55	1.5	
14	7,353	6.37	1.3	
15	7,968	6.24	1.2	
16	10,380	75.00	10.9	Upper Marker
17	12,535	0.00	0.0	
18	14,331	0.00	0.0	

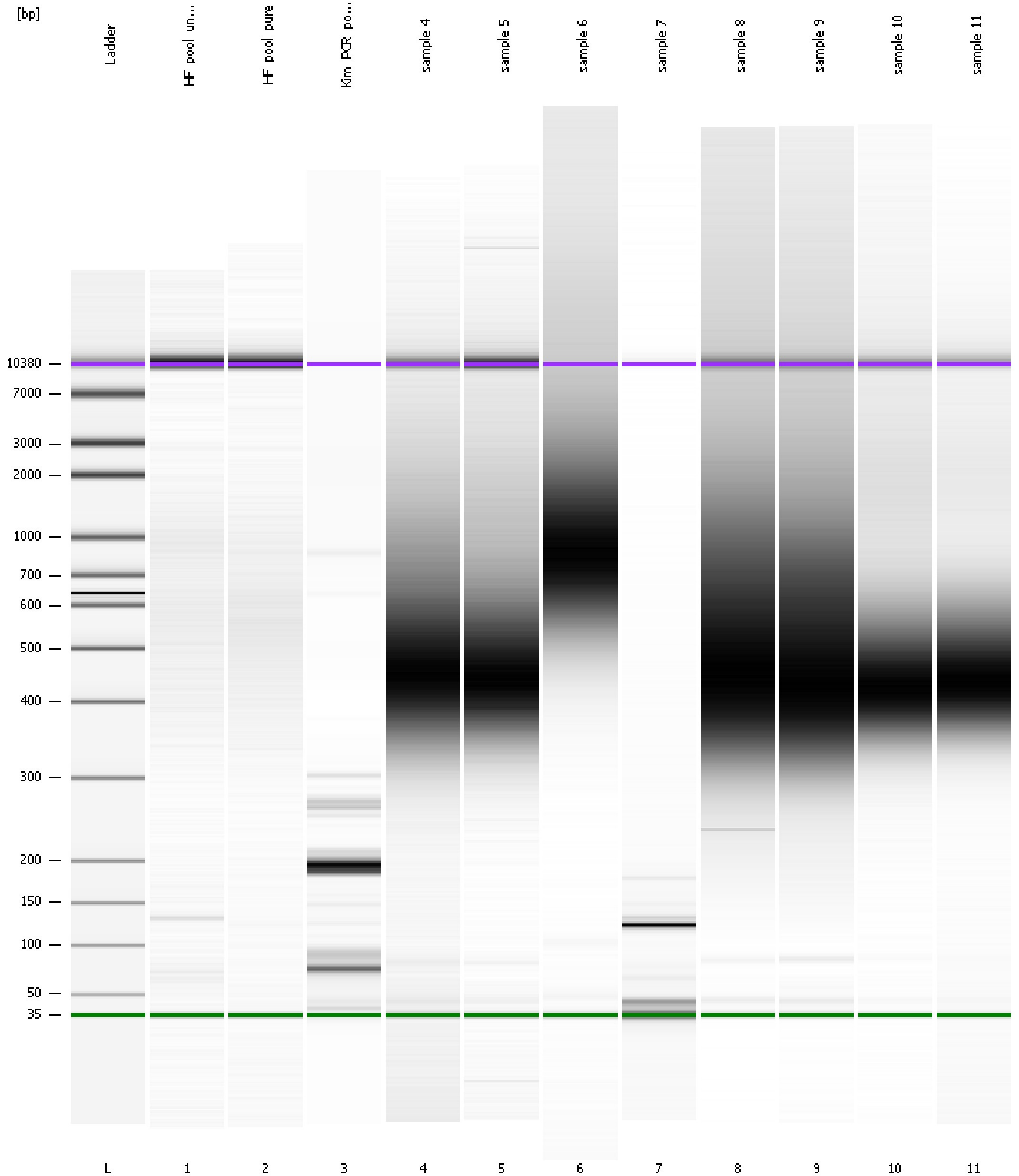
**Region table for sample 11 : sample 11**

From [bp]	To [bp]	Average Size [bp]	Molarity [pmol/l]	Conc. [pg/μl]	Corr. Area	% of Total	Size distribution in CV [%]	Color
286	1,000	476	10,476.9	3,123.41	2,502.8	91	21.9	Blue

Assay Class: High Sensitivity DNA Assay  
Data Path: C:\...ents and Settings\Bioanalyzer\2012-06-27\2012-06-27\_006.xad

Created: 6/27/2012 3:22:22 PM  
Modified: 6/27/2012 4:05:24 PM

**Gel Image**



Assay Class: High Sensitivity DNA Assay  
 Data Path: C:\...ents and Settings\Bioanalyzer\2012-06-27\2012-06-27\_006.xad

Created: 6/27/2012 3:22:22 PM  
 Modified: 6/27/2012 4:05:24 PM

**Run Logbook**

Description	Number	Source	Category	Sub Category	Time	Time Zone	User	Host
Run ended on port 1 (Number of wells acquired: 12)		Instrument	Run		6/27/2012 4:03:43 PM	(GMT --07:00) Pacific Standard Time	UC Davis	D8XSMGH1
Run started on port 1 (File: C:\Documents and Settings\Bioanalyzer\2012-06-27\2012-06-27_006.xad)		Instrument	Run		6/27/2012 3:22:28 PM	(GMT --07:00) Pacific Standard Time	UC Davis	D8XSMGH1
Product Number : G2938B		Instrument	Run		6/27/2012 3:22:28 PM	(GMT --07:00) Pacific Standard Time	UC Davis	D8XSMGH1
Name :		Instrument	Run		6/27/2012 3:22:28 PM	(GMT --07:00) Pacific Standard Time	UC Davis	D8XSMGH1
Vendor : Agilent Technologies		Instrument	Run		6/27/2012 3:22:28 PM	(GMT --07:00) Pacific Standard Time	UC Davis	D8XSMGH1
Serial# : DE13701086		Instrument	Run		6/27/2012 3:22:28 PM	(GMT --07:00) Pacific Standard Time	UC Davis	D8XSMGH1
Firmware : C.01.069		Instrument	Run		6/27/2012 3:22:28 PM	(GMT --07:00) Pacific Standard Time	UC Davis	D8XSMGH1
Cartridge : Electrode		Instrument	Run		6/27/2012 3:22:28 PM	(GMT --07:00) Pacific Standard Time	UC Davis	D8XSMGH1