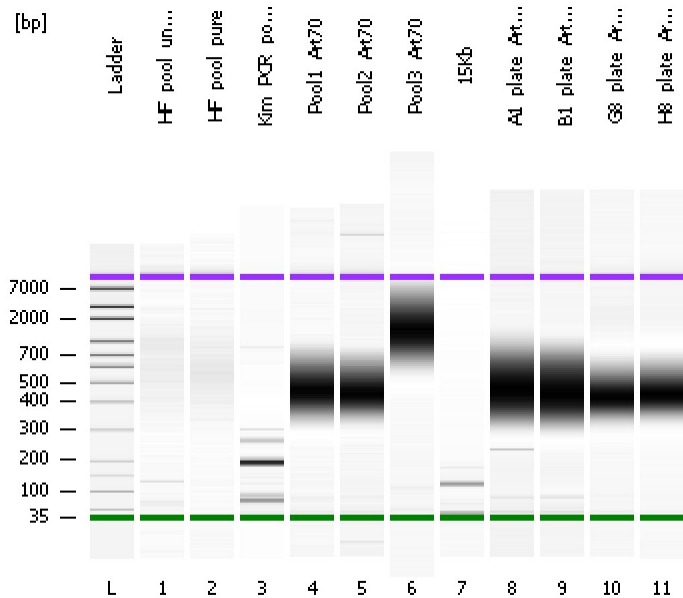


Assay Class: High Sensitivity DNA Assay
Data Path: C:\...ents and Settings\Bioanalyzer\2012-06-27\2012-06-27_006.xad

Created: 6/27/2012 3:22:22 PM
Modified: 7/20/2012 5:00:46 PM

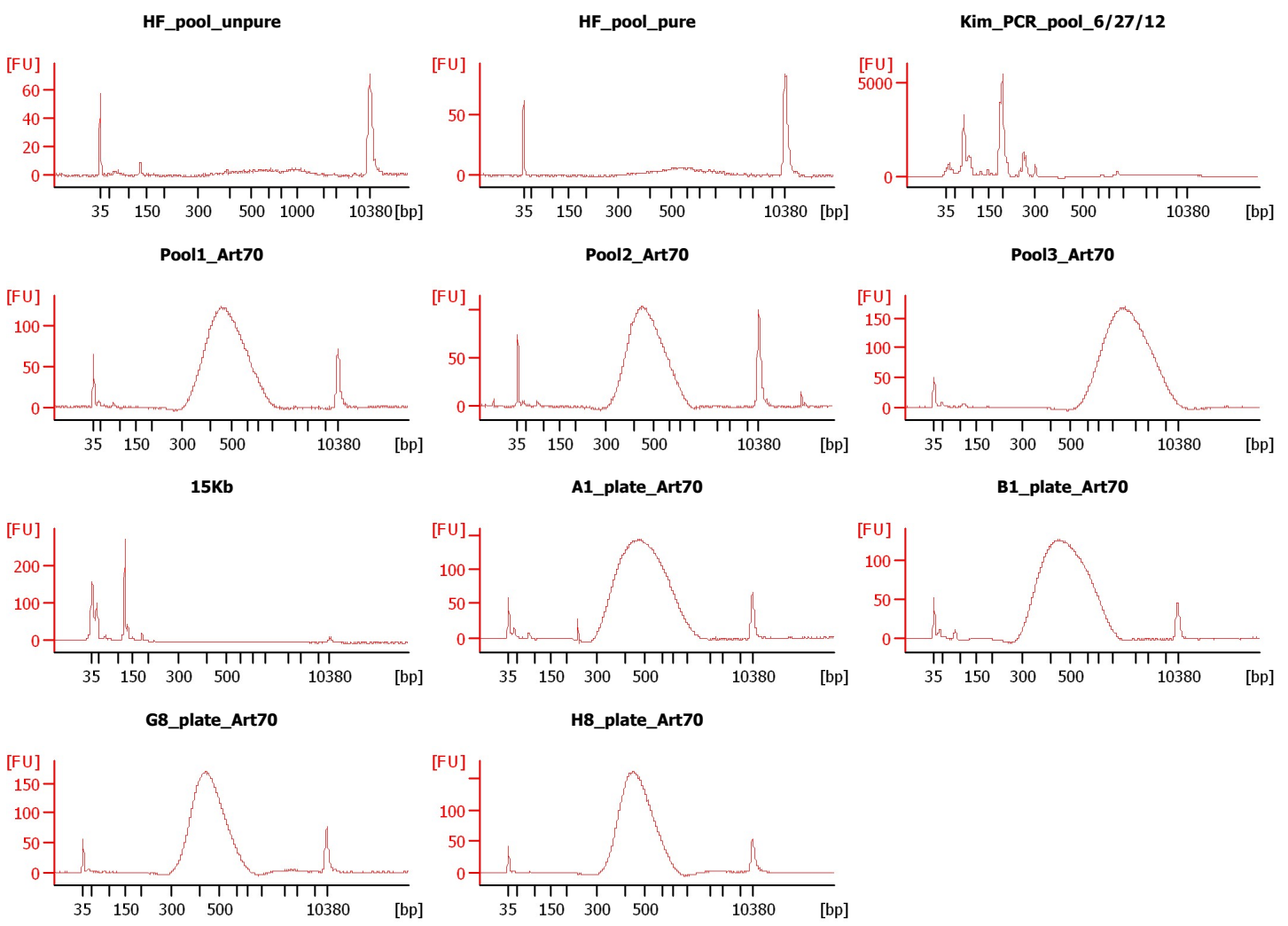
Electrophoresis File Run Summary



Instrument Information:
Instrument Name: DE13701086 Firmware: C.01.069
Serial#: DE13701086 Type: G2938B

Assay Information:
Assay Origin Path: C:\Program Files\Agilent\2100 bioanalyzer\2100 expert\assays\dsDNA\High Sensitivity DNA.xsy
Assay Class: High Sensitivity DNA Assay
Version: 1.03
Assay Comments: Copyright © 2003-2010 Agilent Technologies

Chip Information:
Chip Lot #: Reagent Kit Lot #: Chip Comments:



Assay Class: High Sensitivity DNA Assay
 Data Path: C:\...ents and Settings\Bioanalyzer\2012-06-27\2012-06-27_006.xad

Created: 6/27/2012 3:22:22 PM
 Modified: 7/20/2012 5:00:46 PM

Electrophoresis File Run Summary (Chip Summary)

Sample Name	Sample Comment	Rest. Digest	Status	Observation	Result Label	Result Color
HF_pool_unpure		<input type="checkbox"/>	✓			
HF_pool_pure		<input type="checkbox"/>	✓			
Kim_PCR_pool_6/27/12		<input type="checkbox"/>	✓			
Pool1_Art70		<input type="checkbox"/>	✓			
Pool2_Art70		<input type="checkbox"/>	✓			
Pool3_Art70		<input type="checkbox"/>	✓			
15Kb		<input type="checkbox"/>	✓			
A1_plate_Art70		<input type="checkbox"/>	✓			
B1_plate_Art70		<input type="checkbox"/>	✓			
G8_plate_Art70		<input type="checkbox"/>	✓			
H8_plate_Art70		<input type="checkbox"/>	✓			
Ladder		<input type="checkbox"/>	✓			

Chip Lot #

Reagent Kit Lot #

Chip Comments :

Assay Class: High Sensitivity DNA Assay
Data Path: C:\...ents and Settings\Bioanalyzer\2012-06-27\2012-06-27_006.xad

Created: 6/27/2012 3:22:22 PM
Modified: 7/20/2012 5:00:46 PM

Electrophoresis Assay Details

General Analysis Settings

Number of Available Sample and Ladder Wells (Max.) : 12
Minimum Visible Range [s] : 32
Maximum Visible Range [s] : 138
Start Analysis Time Range [s] : 33
End Analysis Time Range [s] : 137.5
Ladder Concentration [pg/μl] : 1950
Uses Standard Area for Ladder Fragments
Lower Marker Concentration [pg/μl] : 125
Upper Marker Concentration [pg/μl] : 75
Used Upper Marker for Quantitation
Standard Curve Fit is Point to Point
Show Data Aligned to Lower and Upper Marker

Integrator Settings

Integration Start Time [s] : 33.05
Integration End Time [s] : 137
Slope Threshold : 0.8
Height Threshold [FU] : 5
Area Threshold : 0.1
Width Threshold [s] : 0.6
Baseline Plateau [s] : 0.5

Filter Settings

Filter Width [s] : 0.5
Polynomial Order : 4

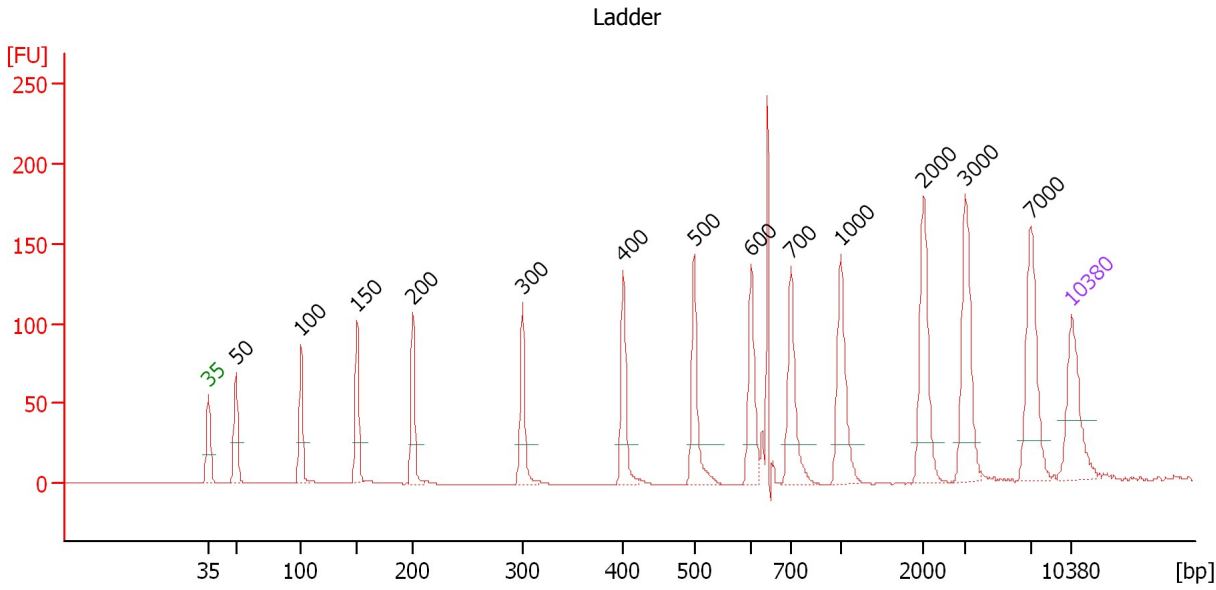
Ladder

Ladder Peak	Size	Area
1	35	160
2	50	210
3	100	208
4	150	221
5	200	242
6	300	270
7	400	305
8	500	306
9	600	336
10	700	321
11	1000	366
12	2000	413
13	3000	411
14	7000	400
15	10380	214

Assay Class: High Sensitivity DNA Assay
 Data Path: C:\...ents and Settings\Bioanalyzer\2012-06-27\2012-06-27_006.xad

Created: 6/27/2012 3:22:22 PM
 Modified: 7/20/2012 5:00:46 PM

Electropherogram Summary



Overall Results for Ladder

Noise: 0.1

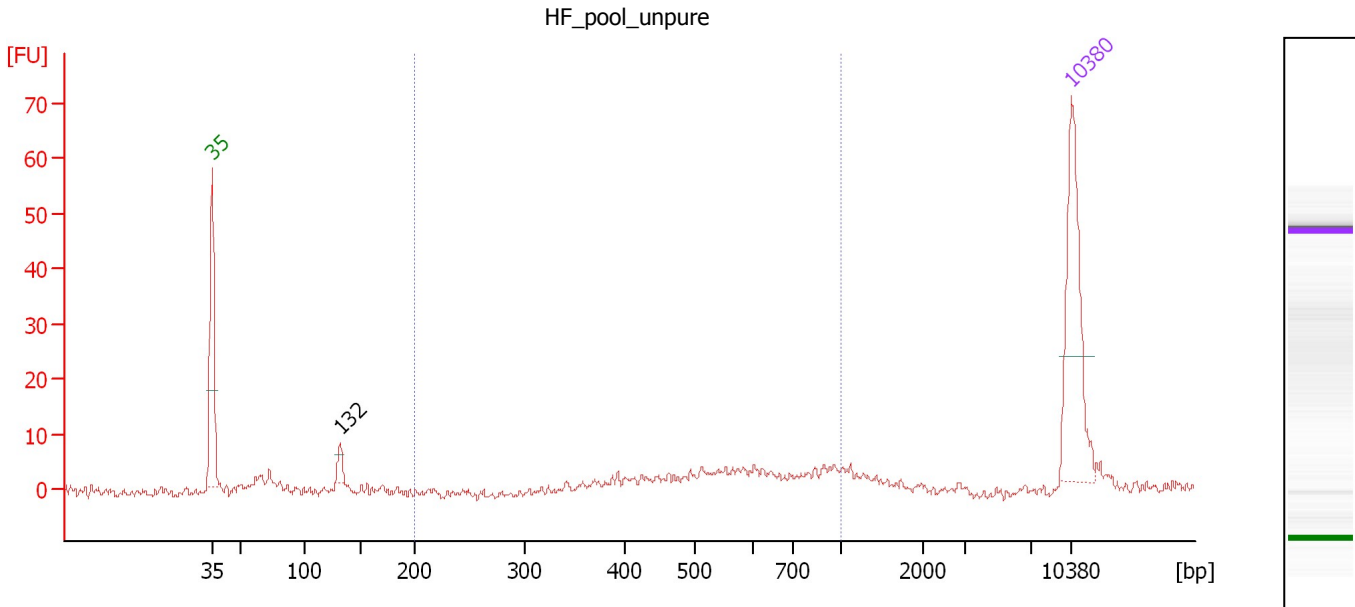
Peak table for Ladder

Peak	Size [bp]	Conc. [pg/μl]	Molarity [pmol/l]	Observations
1	35	125.00	5,411.3	Lower Marker
2	50	150.00	4,545.5	Ladder Peak
3	100	150.00	2,272.7	Ladder Peak
4	150	150.00	1,515.2	Ladder Peak
5	200	150.00	1,136.4	Ladder Peak
6	300	150.00	757.6	Ladder Peak
7	400	150.00	568.2	Ladder Peak
8	500	150.00	454.5	Ladder Peak
9	600	150.00	378.8	Ladder Peak
10	700	150.00	324.7	Ladder Peak
11	1,000	150.00	227.3	Ladder Peak
12	2,000	150.00	113.6	Ladder Peak
13	3,000	150.00	75.8	Ladder Peak
14	7,000	150.00	32.5	Ladder Peak
15	10,380	75.00	10.9	Upper Marker

Assay Class: High Sensitivity DNA Assay
 Data Path: C:\...ents and Settings\Bioanalyzer\2012-06-27\2012-06-27_006.xad

Created: 6/27/2012 3:22:22 PM
 Modified: 7/20/2012 5:00:46 PM

Electropherogram Summary Continued ...



Overall Results for sample 1 : HF_pool_unpure

Number of peaks found: 1 Corr. Area 1: 54.5
 Noise: 1.0

Peak table for sample 1 : HF_pool_unpure

Peak	Size [bp]	Conc. [pg/μl]	Molarity [pmol/l]	Observations
1	35	125.00	5,411.3	Lower Marker
2	132	11.43	130.8	
3	10,380	75.00	10.9	Upper Marker

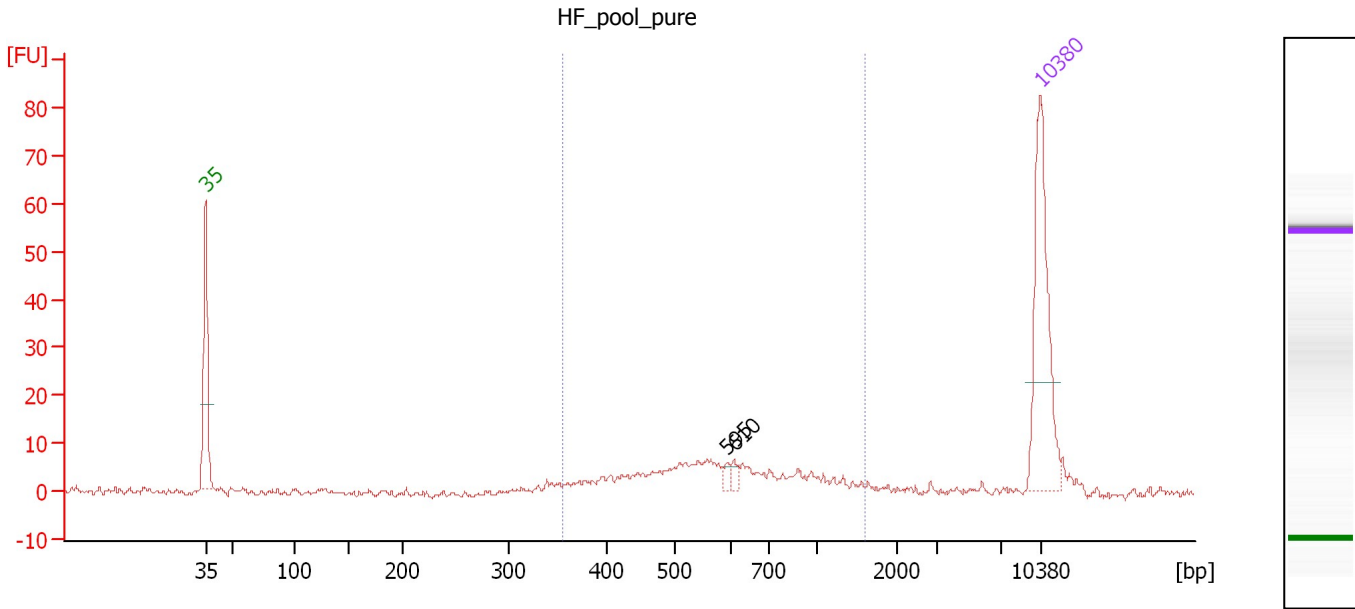
Region table for sample 1 : HF_pool_unpure

From [bp]	To [bp]	Average Size [bp]	Molarity [pmol/l]	Conc. [pg/μl]	Corr. Area	% of Total	Size distribution in CV [%]	Color
200	1,000	607	189.6	68.77	54.5	62	28.1	Blue

Assay Class: High Sensitivity DNA Assay
 Data Path: C:\...ents and Settings\Bioanalyzer\2012-06-27\2012-06-27_006.xad

Created: 6/27/2012 3:22:22 PM
 Modified: 7/20/2012 5:00:46 PM

Electropherogram Summary Continued ...



Overall Results for sample 2 : HF_pool_pure

Number of peaks found: 2 Corr. Area 1: 103.9
 Noise: 0.6

Peak table for sample 2 : HF_pool_pure

Peak	Size [bp]	Conc. [pg/μl]	Molarity [pmol/l]	Observations
1	35	125.00	5,411.3	Lower Marker
2	595	3.64	9.3	
3	610	4.99	12.4	
4	10,380	75.00	10.9	Upper Marker

Region table for sample 2 : HF_pool_pure

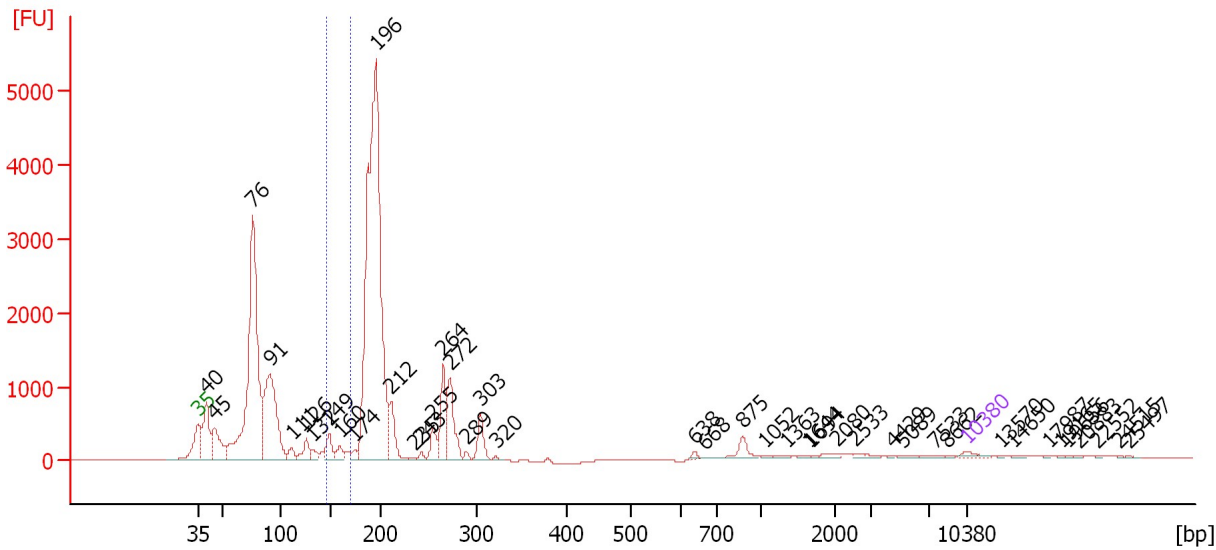
From [bp]	To [bp]	Average Size [bp]	Molarity [pmol/l]	Conc. [pg/μl]	Corr. Area	% of Total	Size distribution in CV [%]	Color
354	1,604	633	296.4	108.31	103.9	85	37.6	Blue

Assay Class: High Sensitivity DNA Assay
 Data Path: C:\...ents and Settings\Bioanalyzer\2012-06-27\2012-06-27_006.xad

Created: 6/27/2012 3:22:22 PM
 Modified: 7/20/2012 5:00:46 PM

Electropherogram Summary Continued ...

Kim_PCR_pool_6/27/12



Overall Results for sample 3 : Kim PCR pool 6/27/12

Number of peaks found: 42 Corr. Area 1: 695.5
 Noise: 0.9

Peak table for sample 3 : Kim PCR pool 6/27/12


Peak	Size [bp]	Conc. [pg/µl]	Molarity [pmol/l]	Observations
1	35	125.00	5,411.3	Lower Marker
2	40	1,389.05	52,405.4	
3	45	1,041.41	35,065.5	
4	76	7,760.13	154,938.3	
5	91	3,456.13	57,830.4	
6	111	223.20	3,050.8	
7	126	369.75	4,454.8	
8	132	170.48	1,962.6	
9	149	417.03	4,250.6	
10	160	224.15	2,123.6	
11	174	135.72	1,178.9	
12	196	12,249.95	94,464.9	
13	212	719.18	5,148.6	
14	235	29.90	192.8	
15	243	77.64	484.9	
16	255	385.84	2,296.9	
17	264	930.26	5,333.1	
18	272	1,033.00	5,756.6	
19	289	59.14	310.4	
20	303	470.68	2,353.0	
21	320	22.23	105.2	
22	638	50.38	119.6	
23	668	9.68	22.0	
24	875	237.84	412.0	
25	1,052	33.32	48.0	
26	1,363	43.82	48.7	

Assay Class: High Sensitivity DNA Assay
 Data Path: C:\...ents and Settings\Bioanalyzer\2012-06-27\2012-06-27_006.xad


Created: 6/27/2012 3:22:22 PM
 Modified: 7/20/2012 5:00:46 PM

Electropherogram Summary Continued ...

... Peak table for sample 3 : Kim PCR pool 6/27/12

Peak	Size [bp]	Conc. [pg/μl]	Molarity [pmol/l]	Observations
27	1,644	36.10	33.3	
28	1,694	17.66	15.8	
29	2,080	56.05	40.8	
30	2,533	68.14	40.8	
31	4,429	14.97	5.1	
32	5,089	41.39	12.3	
33	7,533	42.66	8.6	
34	8,662	12.25	2.1	
35	 10,380	75.00	10.9	Upper Marker
36	13,570	0.00	0.0	
37	14,650	0.00	0.0	
38	17,987	0.00	0.0	
39	19,165	0.00	0.0	
40	19,656	0.00	0.0	
41	20,883	0.00	0.0	
42	22,552	0.00	0.0	
43	24,515	0.00	0.0	
44	25,497	0.00	0.0	

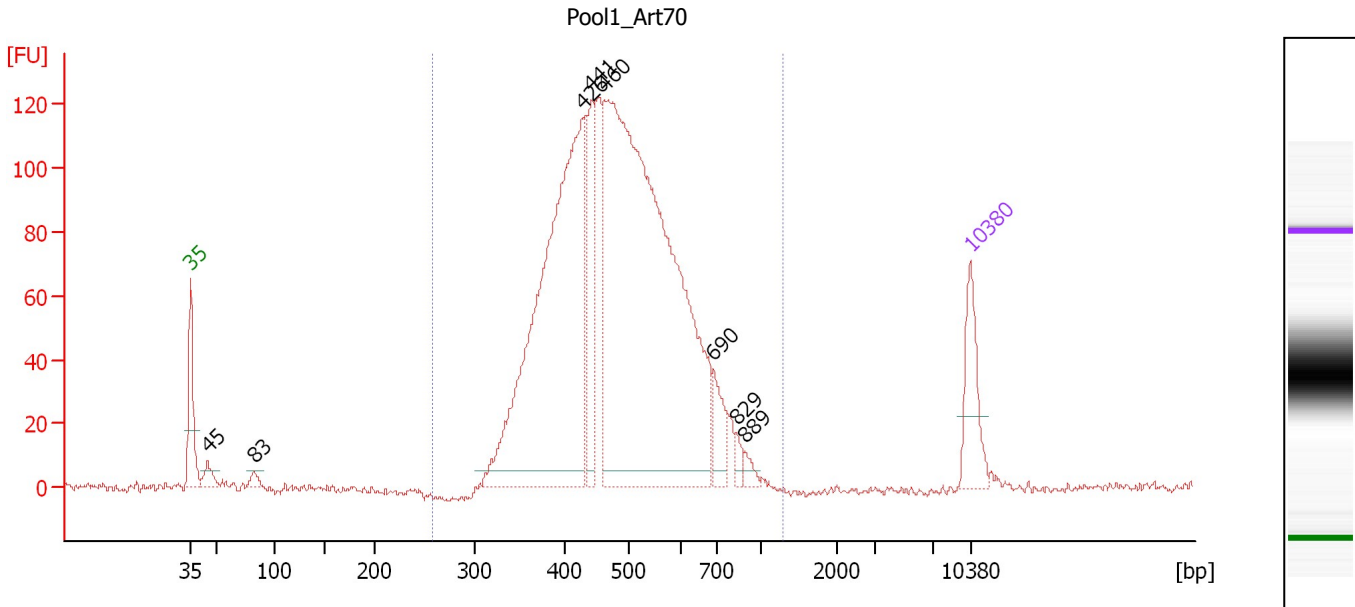
Region table for sample 3 : Kim PCR pool 6/27/12

From [bp]	To [bp]	Average Size [bp]	Molarity [pmol/l]	Conc. [pg/μl]	Corr. Area	% of Total	Size distribution in CV [%]	Color
145	170	155	7,034.5	716.95	695.5	2	4.7	

Assay Class: High Sensitivity DNA Assay
 Data Path: C:\...ents and Settings\Bioanalyzer\2012-06-27\2012-06-27_006.xad

Created: 6/27/2012 3:22:22 PM
 Modified: 7/20/2012 5:00:46 PM

Electropherogram Summary Continued ...



Overall Results for sample 4 : Pool1_Art70

Number of peaks found: 8 Corr. Area 1: 2,049.6
 Noise: 1.3

Peak table for sample 4 : Pool1_Art70

Peak	Size [bp]	Conc. [pg/μl]	Molarity [pmol/l]	Observations
1	35	125.00	5,411.3	Lower Marker
2	45	31.22	1,046.0	
3	83	15.77	288.8	
4	426	908.66	3,230.4	
5	441	177.27	608.8	
6	460	1,416.39	4,662.1	
7	690	59.23	130.1	
8	829	13.95	25.5	
9	889	13.66	23.3	
10	10,380	75.00	10.9	Upper Marker

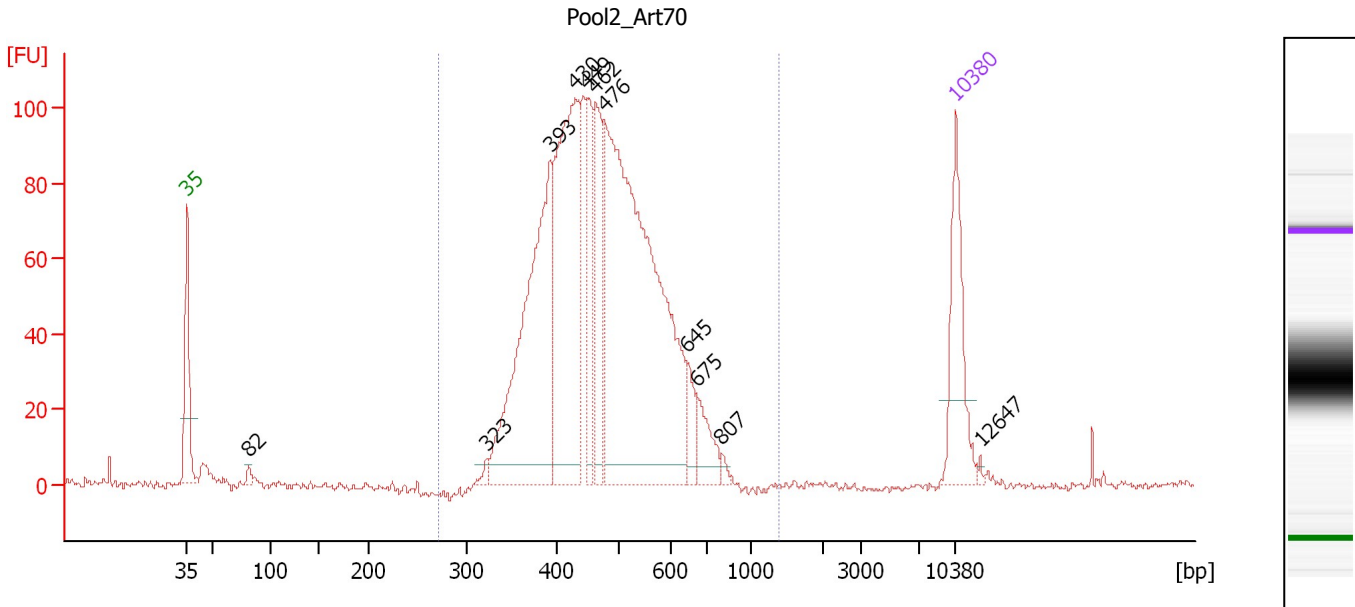
Region table for sample 4 : Pool1_Art70

From [bp]	To [bp]	Average Size [bp]	Molarity [pmol/l]	Conc. [pg/μl]	Corr. Area	% of Total	Size distribution in CV [%]	Color
257	1,281	492	8,921.6	2,736.40	2,049.6	97	21.9	Blue

Assay Class: High Sensitivity DNA Assay
 Data Path: C:\...ents and Settings\Bioanalyzer\2012-06-27\2012-06-27_006.xad

Created: 6/27/2012 3:22:22 PM
 Modified: 7/20/2012 5:00:46 PM

Electropherogram Summary Continued ...



Overall Results for sample 5 : Pool2_Art70

Number of peaks found: 11 Corr. Area 1: 1,572.9
 Noise: 0.8

Peak table for sample 5 : Pool2_Art70

Peak	Size [bp]	Conc. [pg/μl]	Molarity [pmol/l]	Observations
1	35	125.00	5,411.3	Lower Marker
2	82	6.50	120.0	
3	323	6.72	31.6	
4	393	330.23	1,271.5	
5	430	306.62	1,081.4	
6	449	82.08	277.0	
7	462	103.71	340.4	
8	476	614.15	1,954.8	
9	645	27.98	65.7	
10	675	35.65	80.0	
11	807	5.29	9.9	
12	10,380	75.00	10.9	Upper Marker
13	12,647	0.00	0.0	

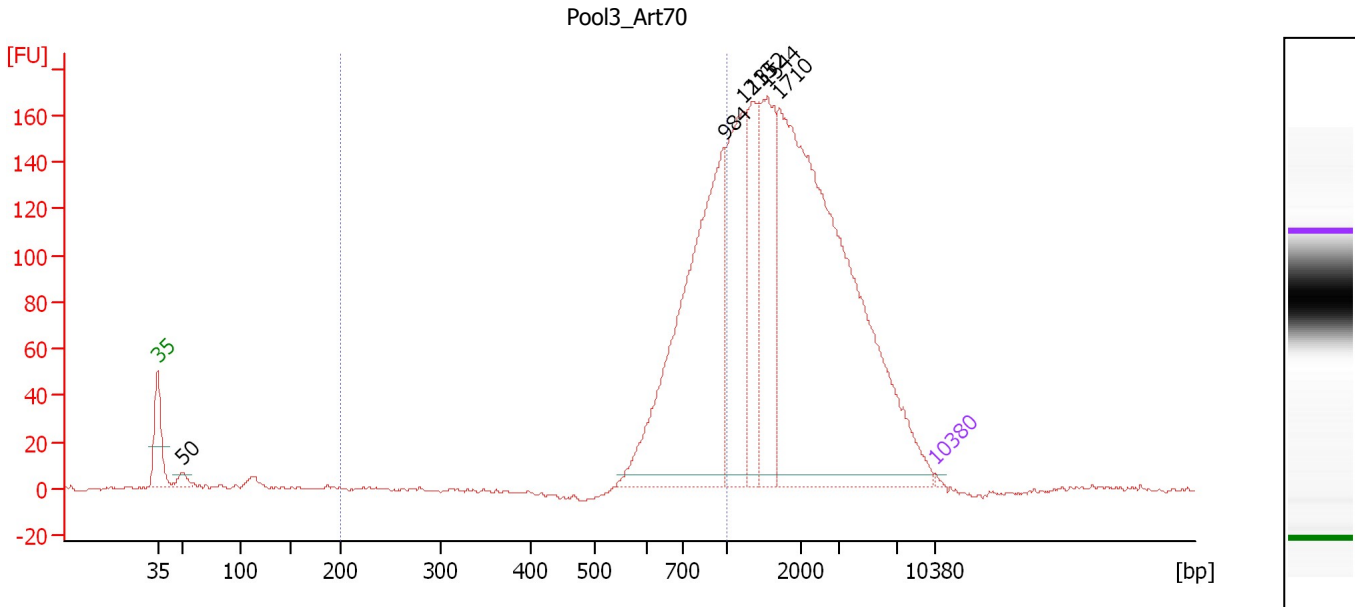
Region table for sample 5 : Pool2_Art70

From [bp]	To [bp]	Average Size [bp]	Molarity [pmol/l]	Conc. [pg/μl]	Corr. Area	% of Total	Size distribution in CV [%]	Color
270	1,384	476	5,236.2	1,574.47	1,572.9	98	18.7	Blue

Assay Class: High Sensitivity DNA Assay
 Data Path: C:\...ents and Settings\Bioanalyzer\2012-06-27\2012-06-27_006.xad

Created: 6/27/2012 3:22:22 PM
 Modified: 7/20/2012 5:00:46 PM

Electropherogram Summary Continued ...



Overall Results for sample 6 : Pool3 Art70

Number of peaks found: 6 Corr. Area 1: 642.8
 Noise: 0.8

Peak table for sample 6 : Pool3 Art70

Peak	Size [bp]	Conc. [pg/μl]	Molarity [pmol/l]	Observations
1	35	125.00	5,411.3	Lower Marker
2	50	695.95	21,168.4	
3	984	21,951.87	33,790.1	
4	1,213	9,278.58	11,592.0	
5	1,352	5,675.56	6,359.2	
6	1,544	8,094.67	7,943.0	
7	1,710	35,165.28	31,162.9	
8	10,380	75.00	10.9	Upper Marker

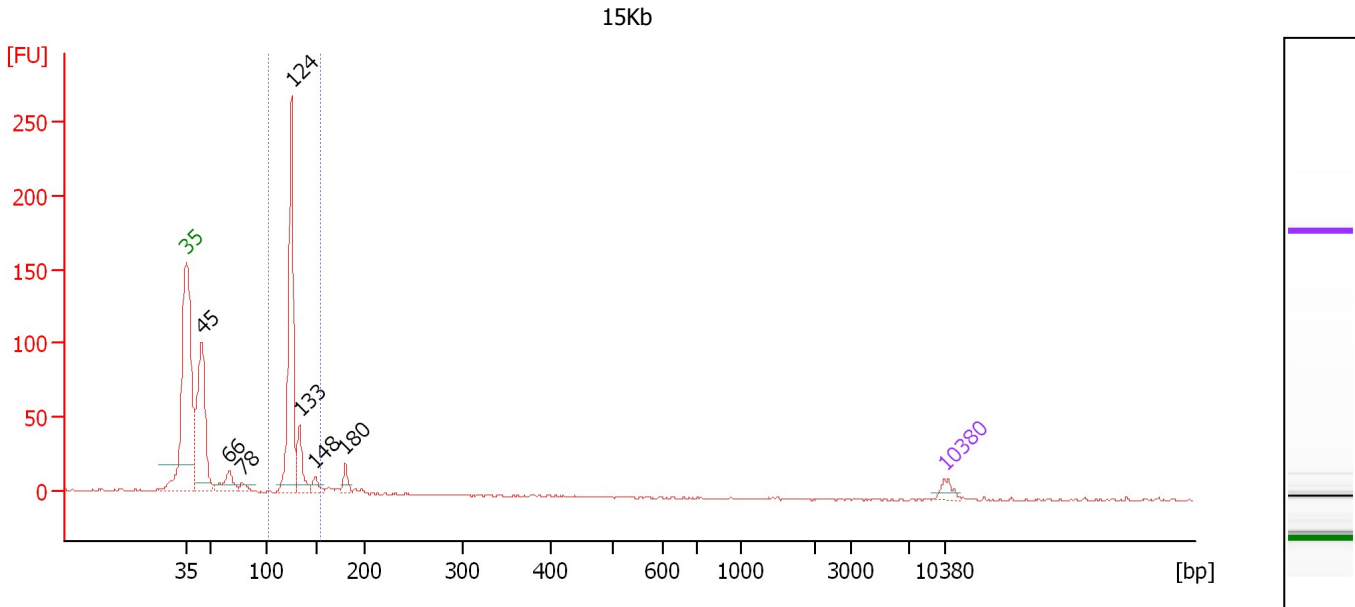
Region table for sample 6 : Pool3 Art70

From [bp]	To [bp]	Average Size [bp]	Molarity [pmol/l]	Conc. [pg/μl]	Corr. Area	% of Total	Size distribution in CV [%]	Color
200	1,000	800	47,334.9	24,375.99	642.8	27	15.5	Blue

Assay Class: High Sensitivity DNA Assay
 Data Path: C:\...ents and Settings\Bioanalyzer\2012-06-27\2012-06-27_006.xad

Created: 6/27/2012 3:22:22 PM
 Modified: 7/20/2012 5:00:46 PM

Electropherogram Summary Continued ...



Overall Results for sample 7 : 15Kb

Number of peaks found: 7 Corr. Area 1: 313.3
 Noise: 0.6

Peak table for sample 7 : 15Kb

Peak	Size [bp]	Conc. [pg/μl]	Molarity [pmol/l]	Observations
1	35	125.00	5,411.3	Lower Marker
2	45	1,931.61	65,250.8	
3	66	299.41	6,823.5	
4	78	88.83	1,732.6	
5	124	2,359.91	28,722.0	
6	133	446.14	5,096.9	
7	148	120.97	1,235.6	
8	180	141.52	1,194.4	
9	10,380	75.00	10.9	Upper Marker

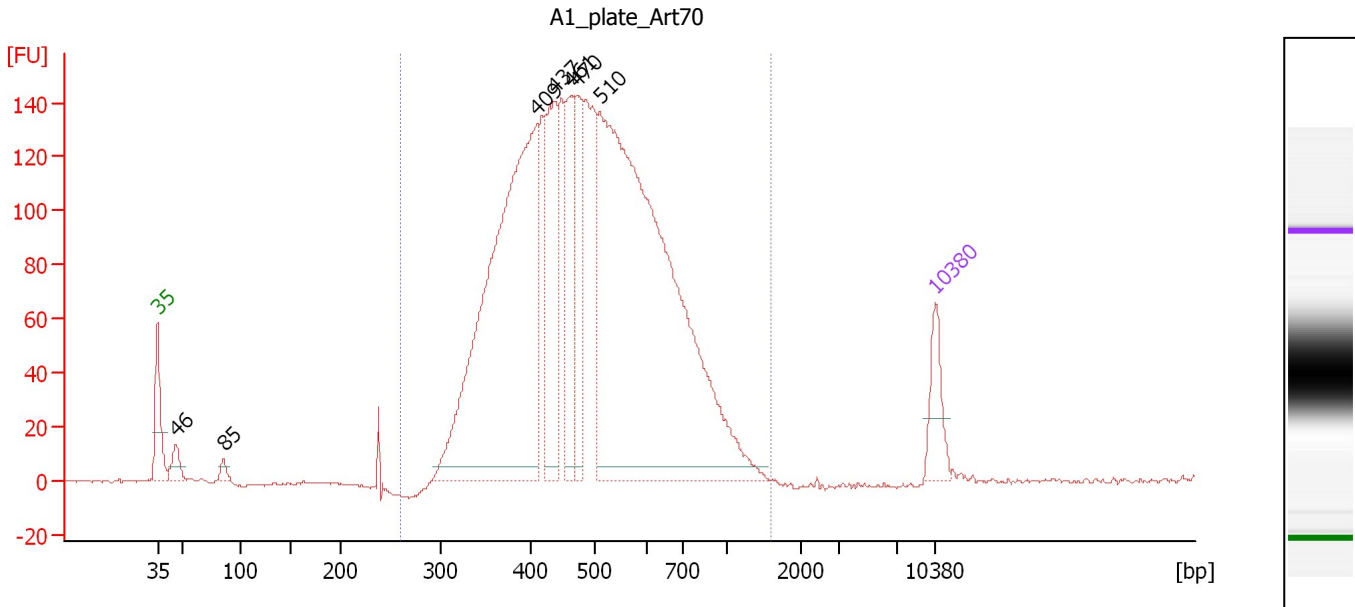
Region table for sample 7 : 15Kb

From [bp]	To [bp]	Average Size [bp]	Molarity [pmol/l]	Conc. [pg/μl]	Corr. Area	% of Total	Size distribution in CV [%]	Color
101	153	126	35,151.7	2,920.63	313.3	52	5.2	Blue

Assay Class: High Sensitivity DNA Assay
 Data Path: C:\...ents and Settings\Bioanalyzer\2012-06-27\2012-06-27_006.xad

Created: 6/27/2012 3:22:22 PM
 Modified: 7/20/2012 5:00:46 PM

Electropherogram Summary Continued ...



Overall Results for sample 8 : A1_plate Art70

Number of peaks found: 7 Corr. Area 1: 2,946.7
 Noise: 0.5

Peak table for sample 8 : A1_plate Art70

Peak	Size [bp]	Conc. [pg/μl]	Molarity [pmol/l]	Observations
1	35	125.00	5,411.3	Lower Marker
2	46	55.85	1,849.6	
3	85	21.40	381.5	
4	409	1,336.88	4,955.0	
5	437	303.82	1,053.8	
6	461	249.86	820.6	
7	470	206.79	666.5	
8	510	1,900.94	5,651.5	
9	10,380	75.00	10.9	Upper Marker

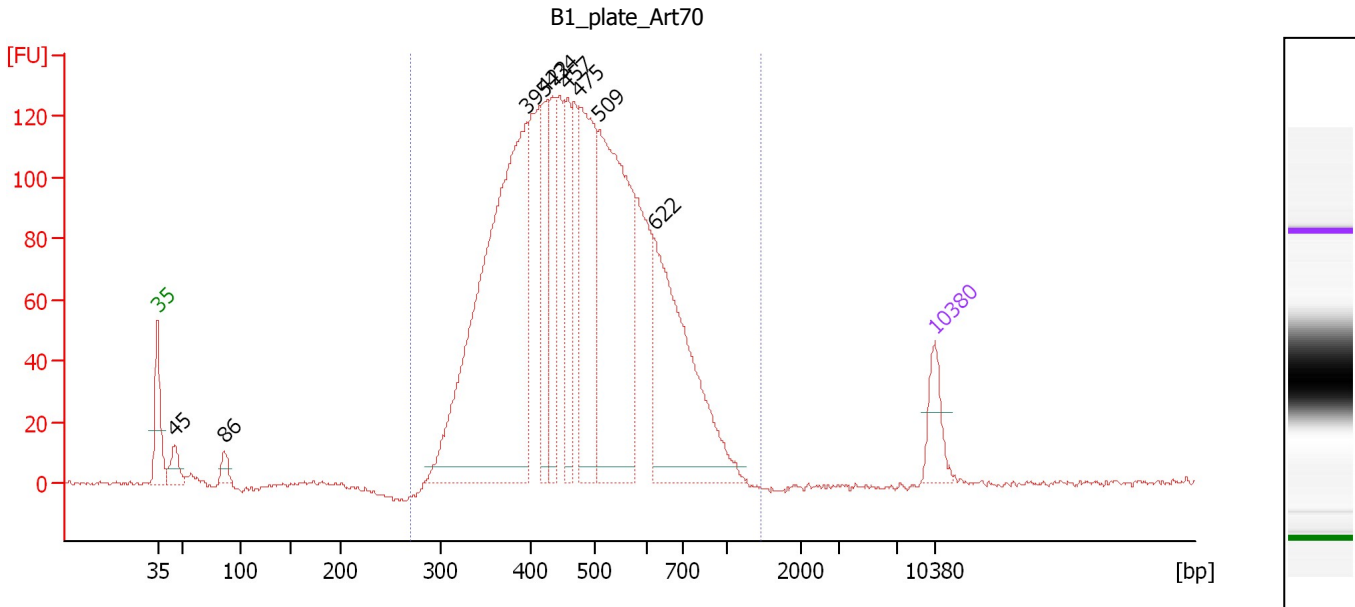
Region table for sample 8 : A1_plate Art70

From [bp]	To [bp]	Average Size [bp]	Molarity [pmol/l]	Conc. [pg/μl]	Corr. Area	% of Total	Size distribution in CV [%]	Color
260	1,604	511	14,807.1	4,567.63	2,946.7	99	29.2	Blue

Assay Class: High Sensitivity DNA Assay
 Data Path: C:\...ents and Settings\Bioanalyzer\2012-06-27\2012-06-27_006.xad

Created: 6/27/2012 3:22:22 PM
 Modified: 7/20/2012 5:00:46 PM

Electropherogram Summary Continued ...



Overall Results for sample 9 : B1_plate Art70

Number of peaks found: 9 Corr. Area 1: 2,625.1
 Noise: 0.8

Peak table for sample 9 : B1_plate Art70

Peak	Size [bp]	Conc. [pg/μl]	Molarity [pmol/l]	Observations
1	35	125.00	5,411.3	Lower Marker
2	45	75.14	2,506.1	
3	86	43.95	778.2	
4	395	1,486.22	5,699.9	
5	422	227.25	816.1	
6	434	211.06	736.5	
7	457	205.14	680.1	
8	475	492.79	1,570.5	
9	509	854.49	2,545.1	
10	622	621.41	1,513.3	
11	10,380	75.00	10.9	Upper Marker

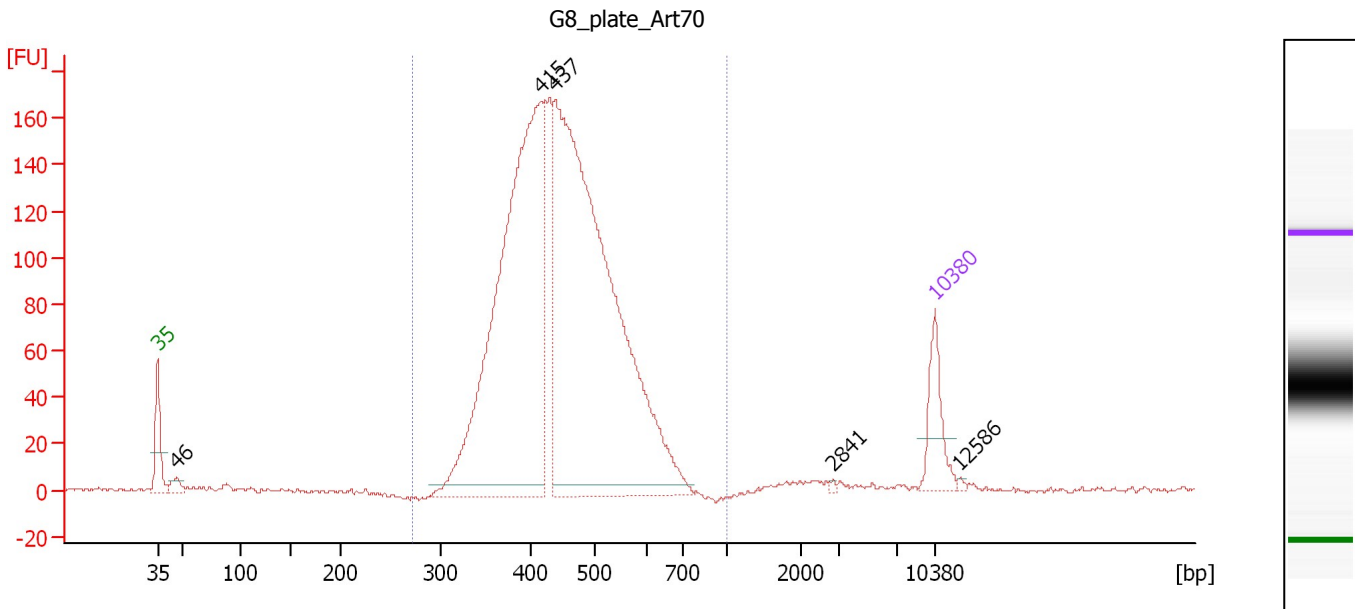
Region table for sample 9 : B1_plate Art70

From [bp]	To [bp]	Average Size [bp]	Molarity [pmol/l]	Conc. [pg/μl]	Corr. Area	% of Total	Size distribution in CV [%]	Color
269	1,449	491	17,597.9	5,267.56	2,625.1	98	26.3	Blue

Assay Class: High Sensitivity DNA Assay
 Data Path: C:\...ents and Settings\Bioanalyzer\2012-06-27\2012-06-27_006.xad

Created: 6/27/2012 3:22:22 PM
 Modified: 7/20/2012 5:00:46 PM

Electropherogram Summary Continued ...



Overall Results for sample 10 : G8_plate Art70

Number of peaks found: 5 Corr. Area 1: 2,321.8
 Noise: 1.0

Peak table for sample 10 : G8_plate Art70

Peak	Size [bp]	Conc. [pg/μl]	Molarity [pmol/l]	Observations
1	35	125.00	5,411.3	Lower Marker
2	46	27.95	911.4	
3	415	1,223.54	4,463.5	
4	437	1,536.81	5,324.6	
5	2,841	2.49	1.3	
6	10,380	75.00	10.9	Upper Marker
7	12,586	0.00	0.0	

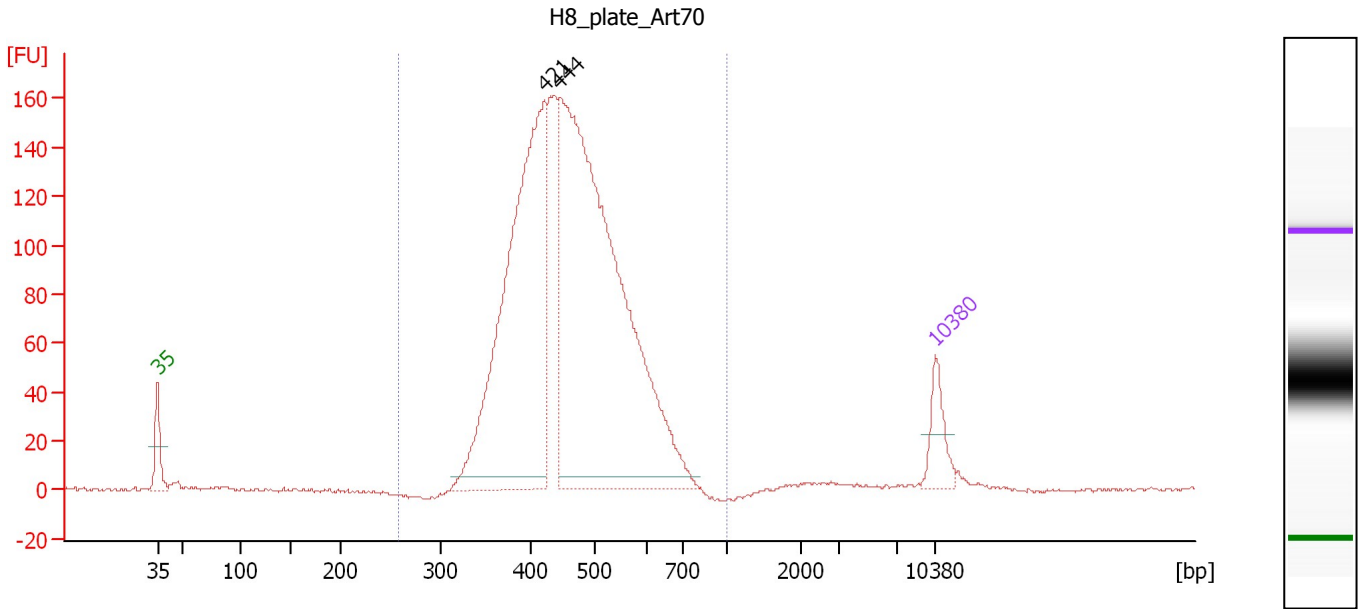
Region table for sample 10 : G8_plate Art70

From [bp]	To [bp]	Average Size [bp]	Molarity [pmol/l]	Conc. [pg/μl]	Corr. Area	% of Total	Size distribution in CV [%]	Color
273	1,000	450	9,789.0	2,812.56	2,321.8	98	16.4	Blue

Assay Class: High Sensitivity DNA Assay
 Data Path: C:\...ents and Settings\Bioanalyzer\2012-06-27\2012-06-27_006.xad

Created: 6/27/2012 3:22:22 PM
 Modified: 7/20/2012 5:00:46 PM

Electropherogram Summary Continued ...



Overall Results for sample 11 : H8_plate Art70

Number of peaks found: 2 Corr. Area 1: 2,229.3
 Noise: 0.7

Peak table for sample 11 : H8_plate Art70

Peak	Size [bp]	Conc. [pg/μl]	Molarity [pmol/l]	Observations
1	35	125.00	5,411.3	Lower Marker
2	421	1,307.21	4,699.1	
3	444	1,943.59	6,627.5	
4	10,380	75.00	10.9	Upper Marker

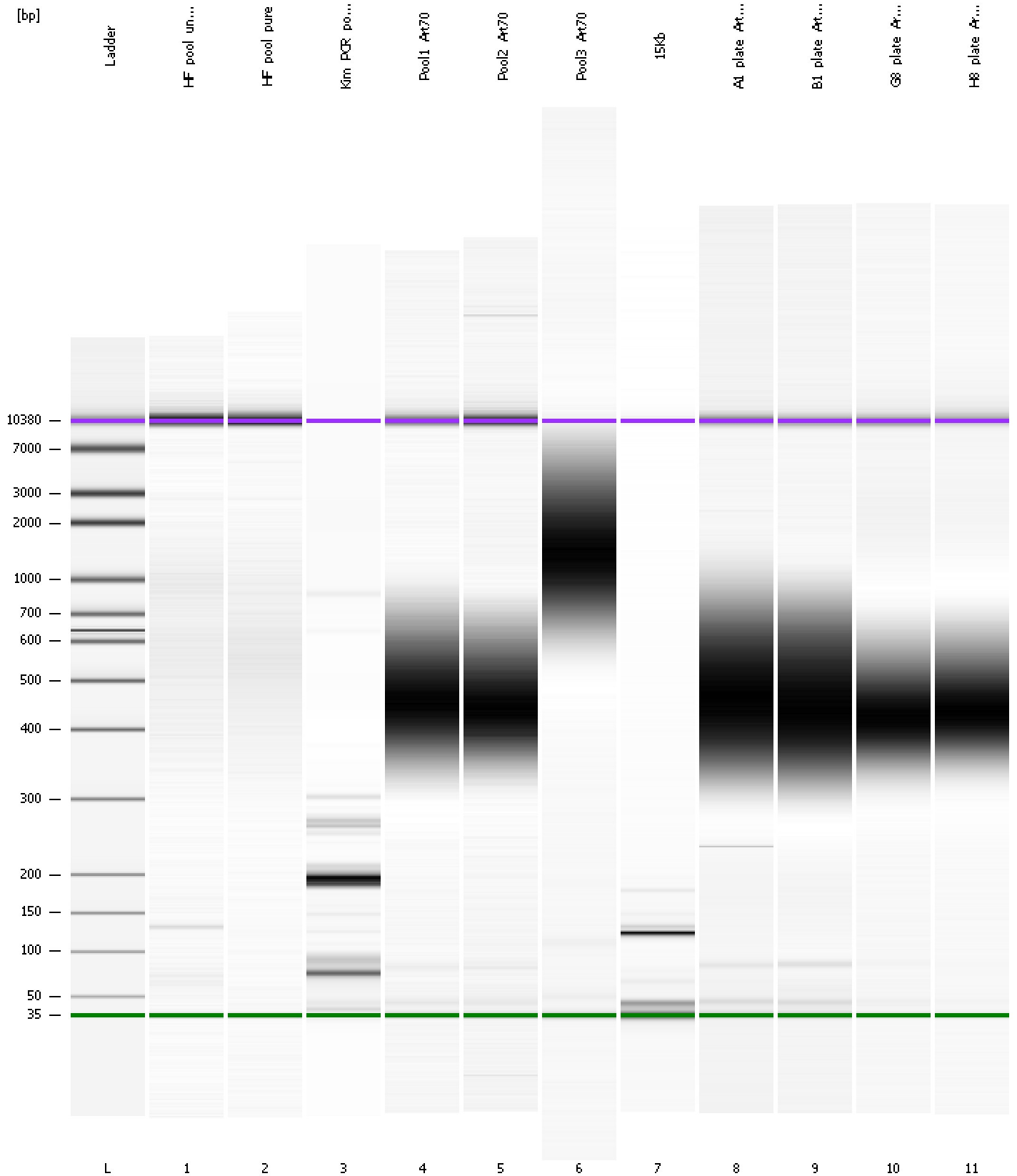
Region table for sample 11 : H8_plate Art70

From [bp]	To [bp]	Average Size [bp]	Molarity [pmol/l]	Conc. [pg/μl]	Corr. Area	% of Total	Size distribution in CV [%]	Color
259	1,000	464	11,920.4	3,524.54	2,229.3	97	16.8	Blue

Assay Class: High Sensitivity DNA Assay
Data Path: C:\...ents and Settings\Bioanalyzer\2012-06-27\2012-06-27_006.xad

Created: 6/27/2012 3:22:22 PM
Modified: 7/20/2012 5:00:46 PM

Gel Image



Assay Class: High Sensitivity DNA Assay
Data Path: C:\...ents and Settings\Bioanalyzer\2012-06-27\2012-06-27_006.xad

Created: 6/27/2012 3:22:22 PM
Modified: 7/20/2012 5:00:46 PM

Curves

Standard Curve

