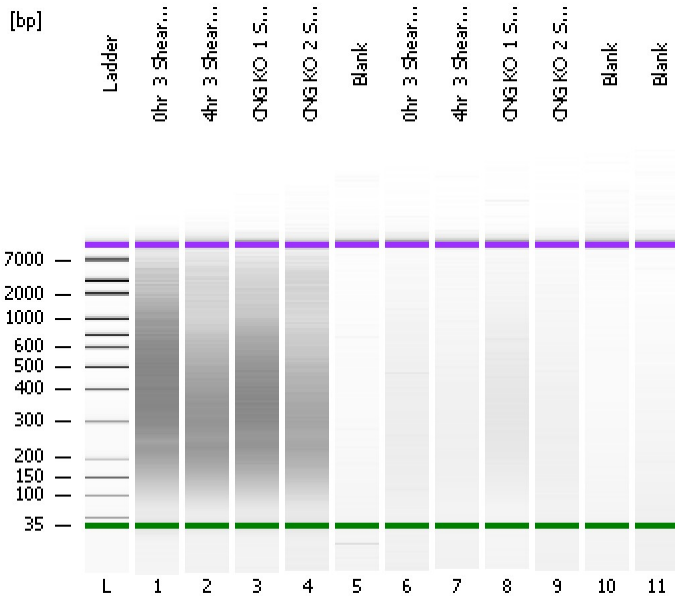


Assay Class: High Sensitivity DNA Assay
Data Path: C:\...ents and Settings\Bioanalyzer\2012-06-29\2012-06-29_001.xad

Created: 6/29/2012 12:12:12 PM
Modified: 6/29/2012 12:59:01 PM

Electrophoresis File Run Summary



Instrument Information:

Instrument Name: DE13701086 Firmware: C.01.069
Serial#: DE13701086 Type: G2938B

Assay Information:

Assay Origin Path: C:\Program Files\Agilent\2100 bioanalyzer\2100 expert\assays\dsDNA\High Sensitivity DNA.xsy
Assay Class: High Sensitivity DNA Assay
Version: 1.03
Assay Comments: Copyright © 2003-2010 Agilent Technologies

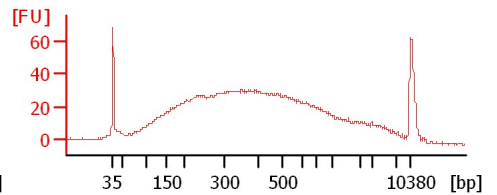
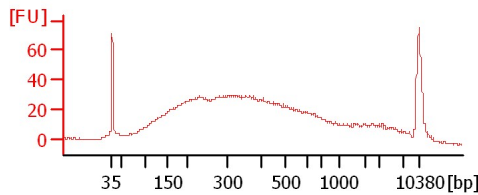
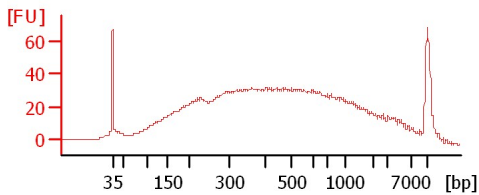
Chip Information:

Chip Lot #:
Reagent Kit Lot #:
Chip Comments:

0hr_3 Sheard DNA

4hr_3 Sheard DNA

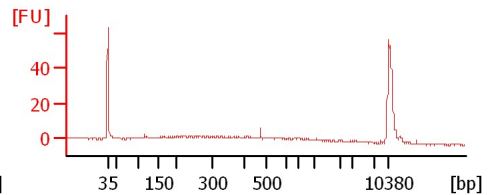
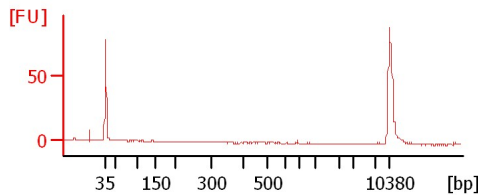
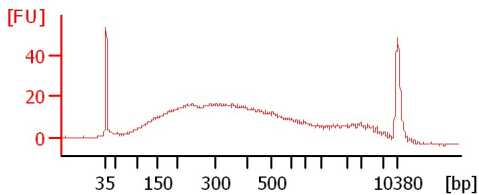
CNG KO_1 Sheared DNA



CNG KO_2 Sheared DNA

Blank

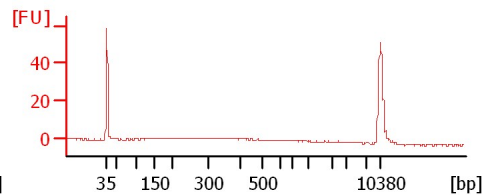
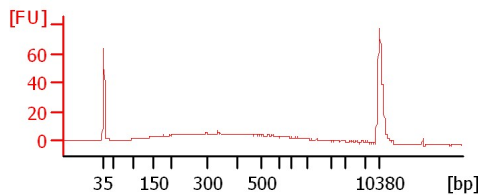
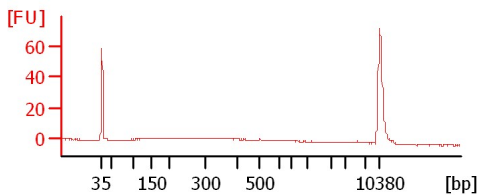
0hr_3 Sheard DNA_1:10



4hr_3 Sheard DNA_1:10

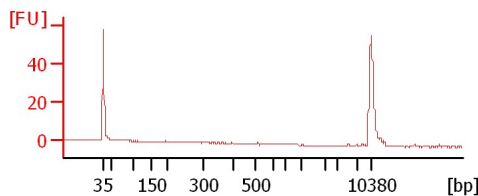
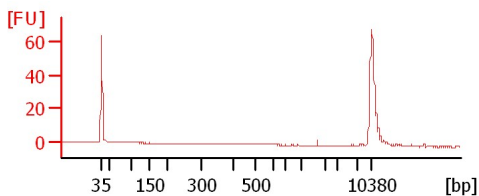
CNG KO_1 Sheared DNA_1:10

CNG KO_2 Sheared DNA_1:10



Blank

Blank



Assay Class: High Sensitivity DNA Assay
Data Path: C:\...ents and Settings\Bioanalyzer\2012-06-29\2012-06-29_001.xad

Created: 6/29/2012 12:12:12 PM
Modified: 6/29/2012 12:59:01 PM

Electrophoresis File Run Summary (Chip Summary)

Sample Name	Sample Comment	Rest. Digest	Status	Observation	Result Label	Result Color
0hr_3 Sheard DNA		<input type="checkbox"/>	✓			
4hr_3 Sheard DNA		<input type="checkbox"/>	✓			
CNG KO_1 Sheared DNA		<input type="checkbox"/>	✓			
CNG KO_2 Sheared DNA		<input type="checkbox"/>	✓			
Blank		<input type="checkbox"/>	✓			
0hr_3 Sheard DNA_1:10		<input type="checkbox"/>	✓			
4hr_3 Sheard DNA_1:10		<input type="checkbox"/>	✓			
CNG KO_1 Sheared DNA_1:10		<input type="checkbox"/>	✓			
CNG KO_2 Sheared DNA_1:10		<input type="checkbox"/>	✓			
Blank		<input type="checkbox"/>	✓			
Blank		<input type="checkbox"/>	✓			
Ladder		<input type="checkbox"/>	✓			

Chip Lot #

Reagent Kit Lot #

Chip Comments :

Assay Class: High Sensitivity DNA Assay
Data Path: C:\...ents and Settings\Bioanalyzer\2012-06-29\2012-06-29_001.xad

Created: 6/29/2012 12:12:12 PM
Modified: 6/29/2012 12:59:01 PM

Electrophoresis Assay Details

General Analysis Settings

Number of Available Sample and Ladder Wells (Max.) : 12
Minimum Visible Range [s] : 32
Maximum Visible Range [s] : 138
Start Analysis Time Range [s] : 33
End Analysis Time Range [s] : 137.5
Ladder Concentration [pg/μl] : 1950
Uses Standard Area for Ladder Fragments
Lower Marker Concentration [pg/μl] : 125
Upper Marker Concentration [pg/μl] : 75
Used Upper Marker for Quantitation
Standard Curve Fit is Point to Point
Show Data Aligned to Lower and Upper Marker

Integrator Settings

Integration Start Time [s] : 33.05
Integration End Time [s] : 137
Slope Threshold : 0.8
Height Threshold [FU] : 5
Area Threshold : 0.1
Width Threshold [s] : 0.6
Baseline Plateau [s] : 0.5

Filter Settings

Filter Width [s] : 0.5
Polynomial Order : 4

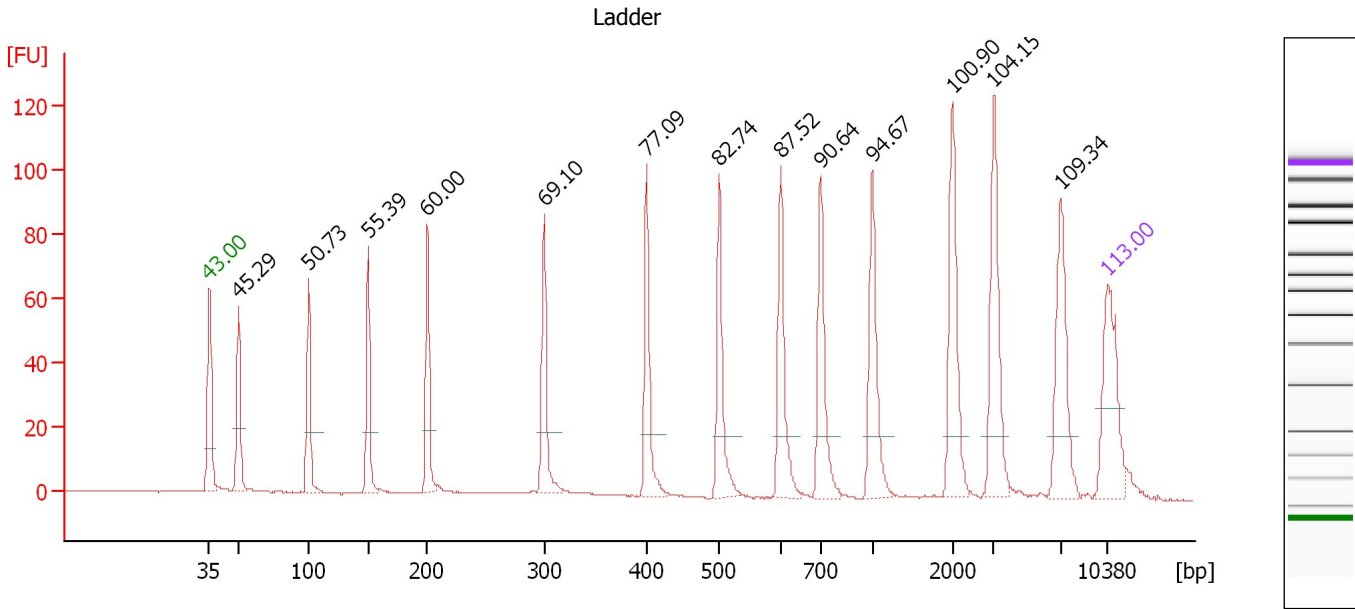
Ladder

Ladder Peak	Size	Area
1	35	160
2	50	210
3	100	208
4	150	221
5	200	242
6	300	270
7	400	305
8	500	306
9	600	336
10	700	321
11	1000	366
12	2000	413
13	3000	411
14	7000	400
15	10380	214

Assay Class: High Sensitivity DNA Assay
 Data Path: C:\...ents and Settings\Bioanalyzer\2012-06-29\2012-06-29_001.xad

Created: 6/29/2012 12:12:12 PM
 Modified: 6/29/2012 12:59:01 PM

Electropherogram Summary



Overall Results for Ladder

Noise: 0.1

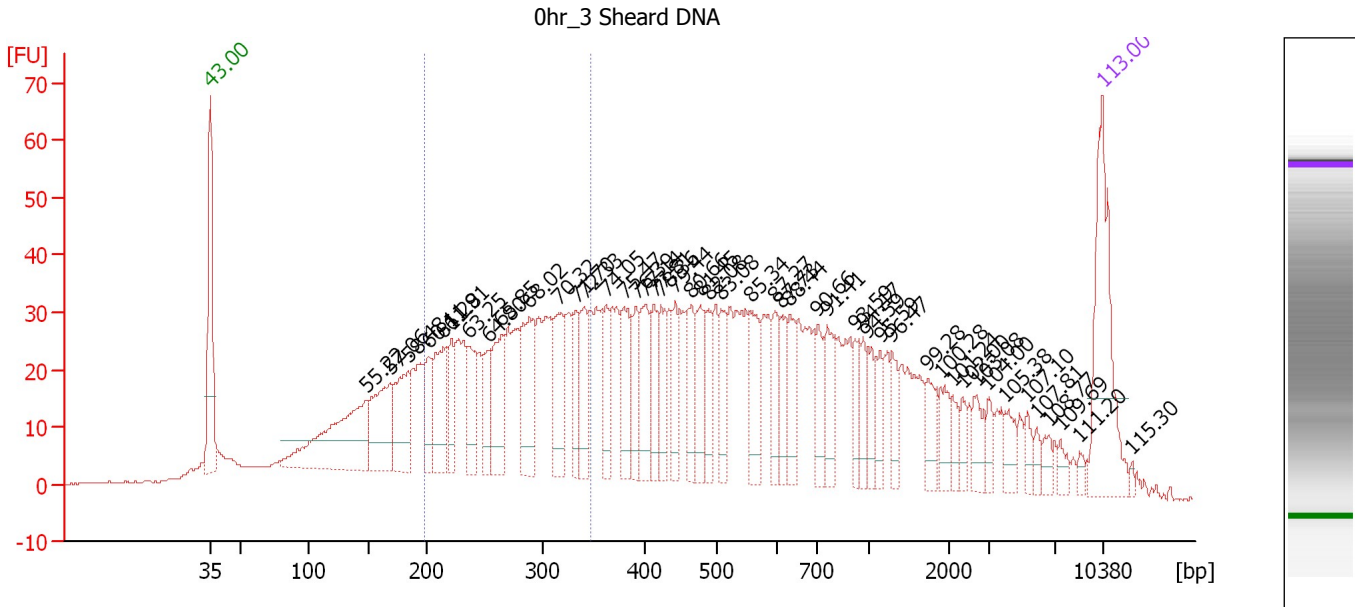
Peak table for Ladder

Peak	Size [bp]	Conc. [pg/μl]	Molarity [pmol/l]	Observations
1	35	125.00	5,411.3	Lower Marker
2	50	150.00	4,545.5	Ladder Peak
3	100	150.00	2,272.7	Ladder Peak
4	150	150.00	1,515.2	Ladder Peak
5	200	150.00	1,136.4	Ladder Peak
6	300	150.00	757.6	Ladder Peak
7	400	150.00	568.2	Ladder Peak
8	500	150.00	454.5	Ladder Peak
9	600	150.00	378.8	Ladder Peak
10	700	150.00	324.7	Ladder Peak
11	1,000	150.00	227.3	Ladder Peak
12	2,000	150.00	113.6	Ladder Peak
13	3,000	150.00	75.8	Ladder Peak
14	7,000	150.00	32.5	Ladder Peak
15	10,380	75.00	10.9	Upper Marker

Assay Class: High Sensitivity DNA Assay
 Data Path: C:\...ents and Settings\Bioanalyzer\2012-06-29\2012-06-29_001.xad

Created: 6/29/2012 12:12:12 PM
 Modified: 6/29/2012 12:59:01 PM

Electropherogram Summary Continued ...



Overall Results for sample 1 : 0hr_3 Sheard DNA

Number of peaks found: 48 Corr. Area 1: 572.7
 Noise: 0.2

Peak table for sample 1 : 0hr_3 Sheard DNA


Peak	Size [bp]	Conc. [pg/μl]	Molarity [pmol/l]	Observations
1	35	125.00	5,411.3	Lower Marker
2	148	146.81	1,501.1	
3	168	76.57	690.1	
4	184	61.99	511.8	
5	201	36.17	272.3	
6	214	60.45	427.8	
7	221	31.93	219.0	
8	236	36.40	234.0	
9	253	34.18	204.9	
10	264	56.63	324.8	
11	288	70.75	372.1	
12	315	48.24	231.8	
13	333	30.62	139.5	
14	340	37.49	166.8	
15	362	29.43	123.2	
16	380	45.13	180.1	
17	391	29.32	113.5	
18	401	41.77	157.8	
19	413	28.92	106.1	
20	422	30.52	109.4	
21	442	26.44	90.7	
22	463	33.82	110.6	
23	477	31.70	100.7	
24	488	25.29	78.5	
25	507	30.39	90.8	
26	554	38.26	104.5	

Assay Class: High Sensitivity DNA Assay
 Data Path: C:\...ents and Settings\Bioanalyzer\2012-06-29\2012-06-29_001.xad


Created: 6/29/2012 12:12:12 PM
 Modified: 6/29/2012 12:59:01 PM

Electropherogram Summary Continued ...

... Peak table for sample 1 : 0hr_3 Sheard DNA

Peak	Size [bp]	Conc. [pg/µl]	Molarity [pmol/l]	Observations
27	595	24.80	63.2	
28	607	22.60	56.4	
29	630	25.72	61.9	
30	702	23.92	51.7	
31	758	28.77	57.5	
32	919	16.35	26.9	
33	963	15.55	24.5	
34	994	15.62	23.8	
35	1,148	15.77	20.8	
36	1,289	15.92	18.7	
37	1,739	18.00	15.7	
38	1,900	15.72	12.5	
39	2,105	9.07	6.5	
40	2,337	8.32	5.4	
41	2,672	13.81	7.8	
42	2,956	9.45	4.8	
43	3,954	11.98	4.6	
44	5,274	7.68	2.2	
45	5,822	6.07	1.6	
46	6,563	7.07	1.6	
47	7,326	6.55	1.4	
48	8,718	3.93	0.7	
49	 10,380	75.00	10.9	Upper Marker
50	12,506	0.00	0.0	

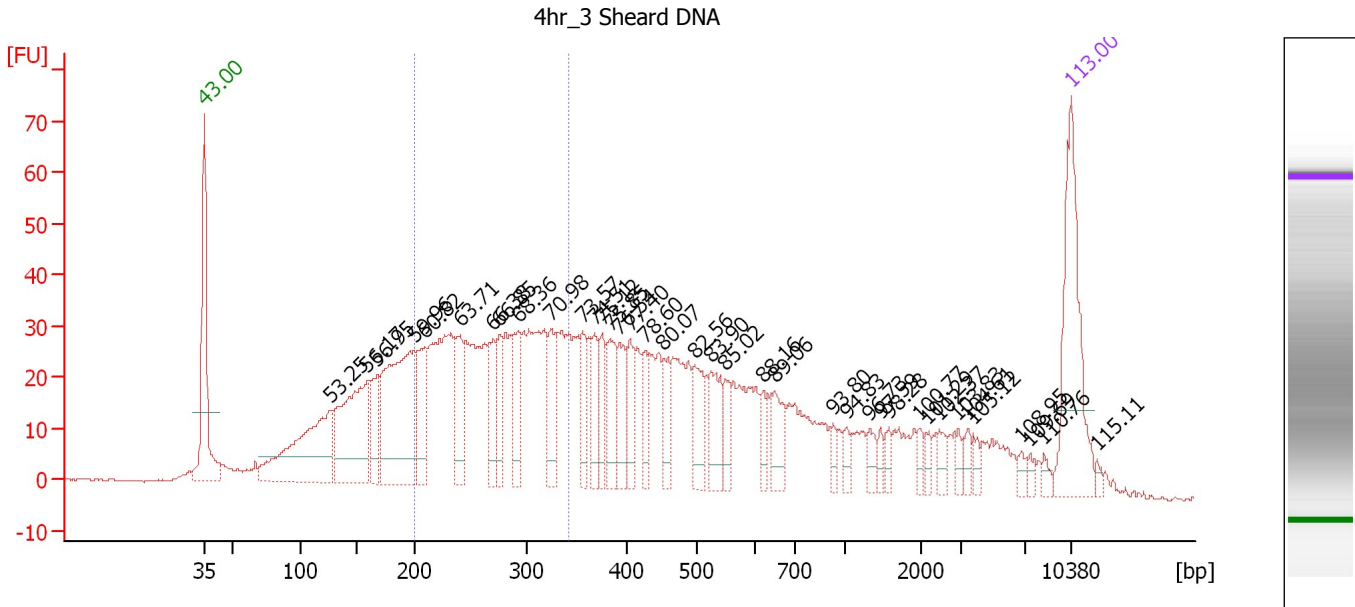
Region table for sample 1 : 0hr_3 Sheard DNA

From [bp]	To [bp]	Average Size [bp]	Molarity [pmol/l]	Conc. [pg/µl]	Corr. Area	% of Total	Size distribution in CV [%]	Color
197	346	273	4,568.2	804.52	572.7	27	15.5	

Assay Class: High Sensitivity DNA Assay
 Data Path: C:\...ents and Settings\Bioanalyzer\2012-06-29\2012-06-29_001.xad

Created: 6/29/2012 12:12:12 PM
 Modified: 6/29/2012 12:59:01 PM

Electropherogram Summary Continued ...



Overall Results for sample 2 : 4hr_3 Sheard DNA

Number of peaks found: 38 Corr. Area 1: 577.7
 Noise: 0.3

Peak table for sample 2 : 4hr_3 Sheard DNA

Peak	Size [bp]	Conc. [pg/μl]	Molarity [pmol/l]	Observations
1	35	125.00	5,411.3	Lower Marker
2	127	146.40	1,746.5	
3	159	133.88	1,279.6	
4	167	37.83	343.4	
5	200	165.96	1,260.0	
6	209	44.73	324.3	
7	241	41.91	263.8	
8	270	35.63	199.9	
9	275	31.49	173.4	
10	292	33.56	174.3	
11	324	42.39	198.5	
12	356	28.47	121.2	
13	368	25.43	104.8	
14	375	24.73	99.9	
15	384	36.51	143.9	
16	393	29.71	114.5	
17	406	24.16	90.3	
18	427	20.94	74.3	
19	453	23.90	80.0	
20	497	30.94	94.3	
21	524	35.21	101.8	
22	548	15.77	43.6	
23	621	12.08	29.5	
24	650	24.01	56.0	
25	935	7.13	11.5	
26	1,026	7.03	10.4	

Assay Class: High Sensitivity DNA Assay
 Data Path: C:\...ents and Settings\Bioanalyzer\2012-06-29\2012-06-29_001.xad

Created: 6/29/2012 12:12:12 PM
 Modified: 6/29/2012 12:59:01 PM

Electropherogram Summary Continued ...

... Peak table for sample 2 : 4hr_3 Sheard DNA

Peak	Size [bp]	Conc. [pg/µl]	Molarity [pmol/l]	Observations
27	1,330	8.55	9.7	
28	1,468	5.68	5.9	
29	1,579	6.22	6.0	
30	1,979	5.51	4.2	
31	2,119	5.15	3.7	
32	2,451	8.45	5.2	
33	2,903	5.48	2.9	
34	3,353	6.30	2.8	
35	3,751	4.98	2.0	
36	6,701	4.92	1.1	
37	7,317	3.07	0.6	
38	8,311	4.41	0.8	
39	10,380	75.00	10.9	Upper Marker
40	12,329	0.00	0.0	

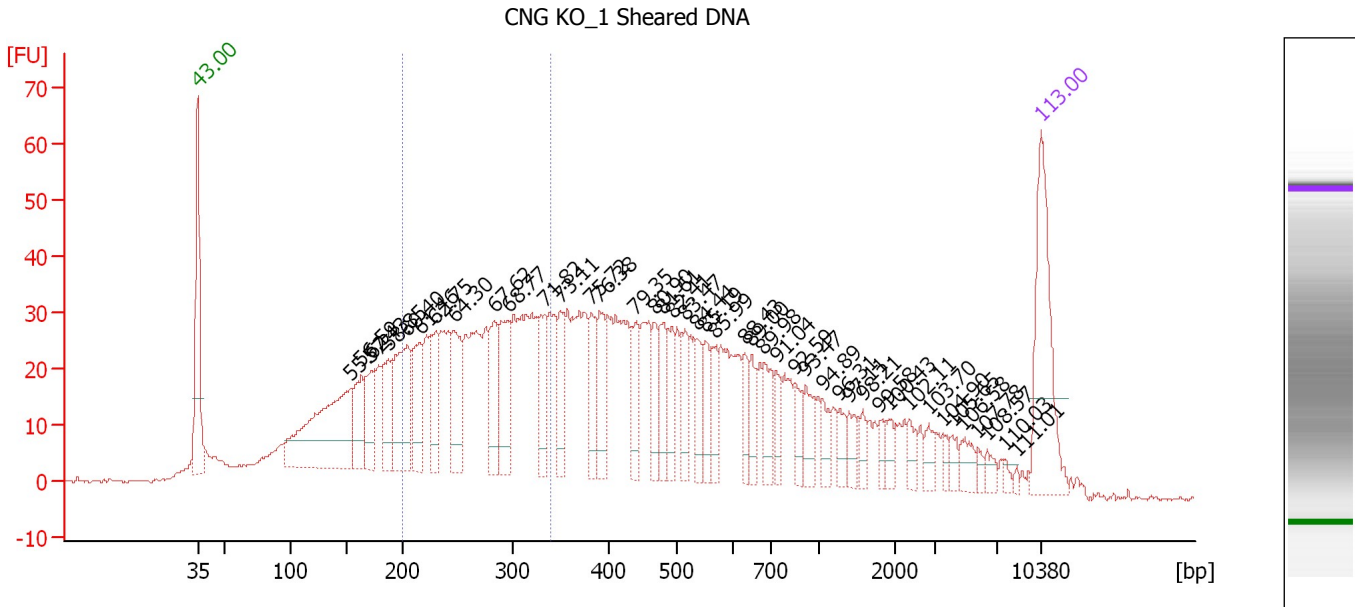
Region table for sample 2 : 4hr_3 Sheard DNA

From [bp]	To [bp]	Average Size [bp]	Molarity [pmol/l]	Conc. [pg/µl]	Corr. Area	% of Total	Size distribution in CV [%]	Color
200	341	270	4,044.0	705.74	577.7	32	15.0	■

Assay Class: High Sensitivity DNA Assay
 Data Path: C:\...ents and Settings\Bioanalyzer\2012-06-29\2012-06-29_001.xad

Created: 6/29/2012 12:12:12 PM
 Modified: 6/29/2012 12:59:01 PM

Electropherogram Summary Continued ...



Overall Results for sample 3 : CNG KO 1 Sheared DNA

Number of peaks found: 43 Corr. Area 1: 551.7
 Noise: 0.3

Peak table for sample 3 : CNG KO 1 Sheared DNA

Peak	Size [bp]	Conc. [pg/μl]	Molarity [pmol/l]	Observations
1	35	125.00	5,411.3	Lower Marker
2	153	183.05	1,818.6	
3	163	49.79	462.6	
4	172	43.37	381.7	
5	188	48.57	392.4	
6	204	93.22	691.0	
7	216	54.90	385.0	
8	230	46.27	304.6	
9	247	55.29	338.9	
10	284	49.17	262.6	
11	296	62.07	317.4	
12	334	41.32	187.4	
13	350	32.96	142.6	
14	383	32.62	129.1	
15	391	41.60	161.1	
16	440	31.20	107.4	
17	467	26.49	85.8	
18	480	34.20	107.9	
19	494	25.31	77.6	
20	515	27.78	81.7	
21	536	25.59	72.4	
22	551	22.82	62.7	
23	568	23.36	62.3	
24	629	18.16	43.7	
25	648	18.77	43.9	
26	679	27.06	60.4	

Assay Class: High Sensitivity DNA Assay
 Data Path: C:\...ents and Settings\Bioanalyzer\2012-06-29\2012-06-29_001.xad


Created: 6/29/2012 12:12:12 PM
 Modified: 6/29/2012 12:59:01 PM

Electropherogram Summary Continued ...

... Peak table for sample 3 : CNG KO 1 Sheared DNA

Peak	Size [bp]	Conc. [pg/μl]	Molarity [pmol/l]	Observations
27	730	16.87	35.0	
28	845	14.90	26.7	
29	911	19.00	31.6	
30	1,036	12.63	18.5	
31	1,263	11.79	14.1	
32	1,391	12.34	13.4	
33	1,568	8.41	8.1	
34	1,788	7.63	6.5	
35	1,923	9.40	7.4	
36	2,371	8.70	5.6	
37	2,863	9.48	5.0	
38	3,578	5.33	2.3	
39	4,158	7.37	2.7	
40	4,874	11.01	3.4	
41	5,794	4.43	1.2	
42	6,408	6.49	1.5	
43	7,639	3.29	0.7	
44	8,539	1.93	0.3	
45	10,380	75.00	10.9	Upper Marker

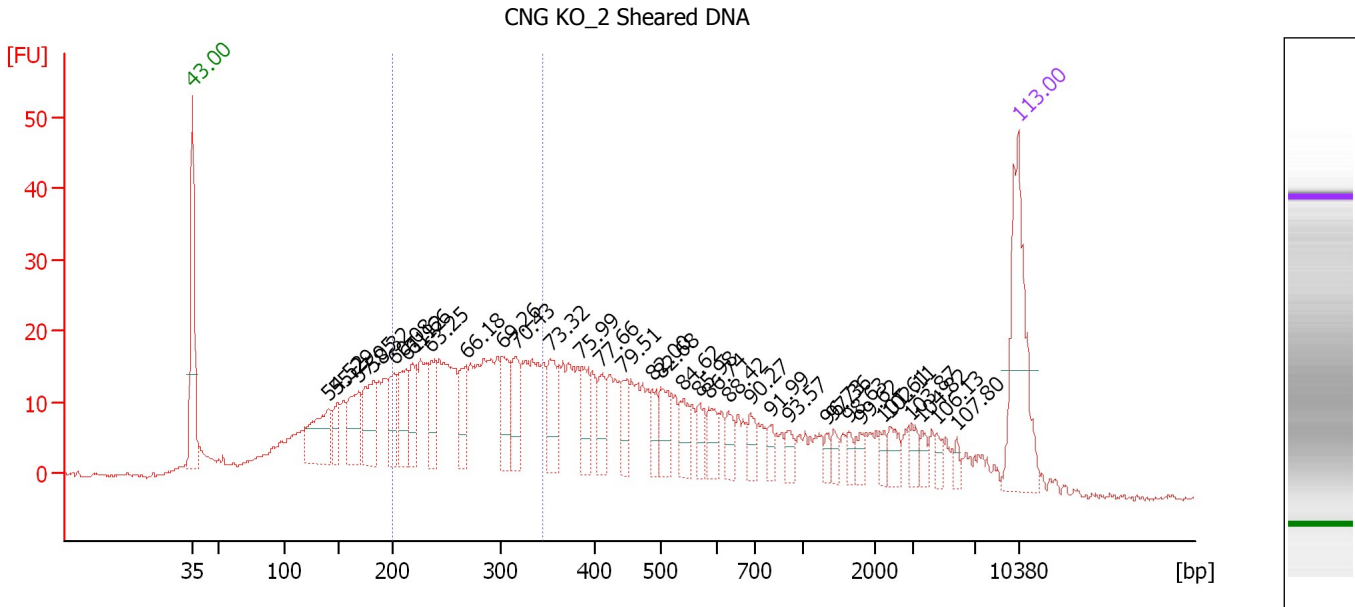
Region table for sample 3 : CNG KO 1 Sheared DNA

From [bp]	To [bp]	Average Size [bp]	Molarity [pmol/l]	Conc. [pg/μl]	Corr. Area	% of Total	Size distribution in CV [%]	Color
200	340	270	4,757.9	832.81	551.7	29	14.8	

Assay Class: High Sensitivity DNA Assay
 Data Path: C:\...ents and Settings\Bioanalyzer\2012-06-29\2012-06-29_001.xad

Created: 6/29/2012 12:12:12 PM
 Modified: 6/29/2012 12:59:01 PM

Electropherogram Summary Continued ...



Assay Class: High Sensitivity DNA Assay
 Data Path: C:\...ents and Settings\Bioanalyzer\2012-06-29\2012-06-29_001.xad


Created: 6/29/2012 12:12:12 PM
 Modified: 6/29/2012 12:59:01 PM

Electropherogram Summary Continued ...

... Peak table for sample 4 : CNG KO 2 Sheared DNA

Peak	Size [bp]	Conc. [pg/μl]	Molarity [pmol/l]	Observations
27	1,432	7.01	7.4	
28	1,635	6.33	5.9	
29	1,795	8.95	7.6	
30	2,218	5.46	3.7	
31	2,372	11.49	7.3	
32	2,915	8.56	4.4	
33	3,519	6.73	2.9	
34	4,528	5.88	2.0	
35	5,815	4.53	1.2	
36	▶ 10,380	75.00	10.9	Upper Marker

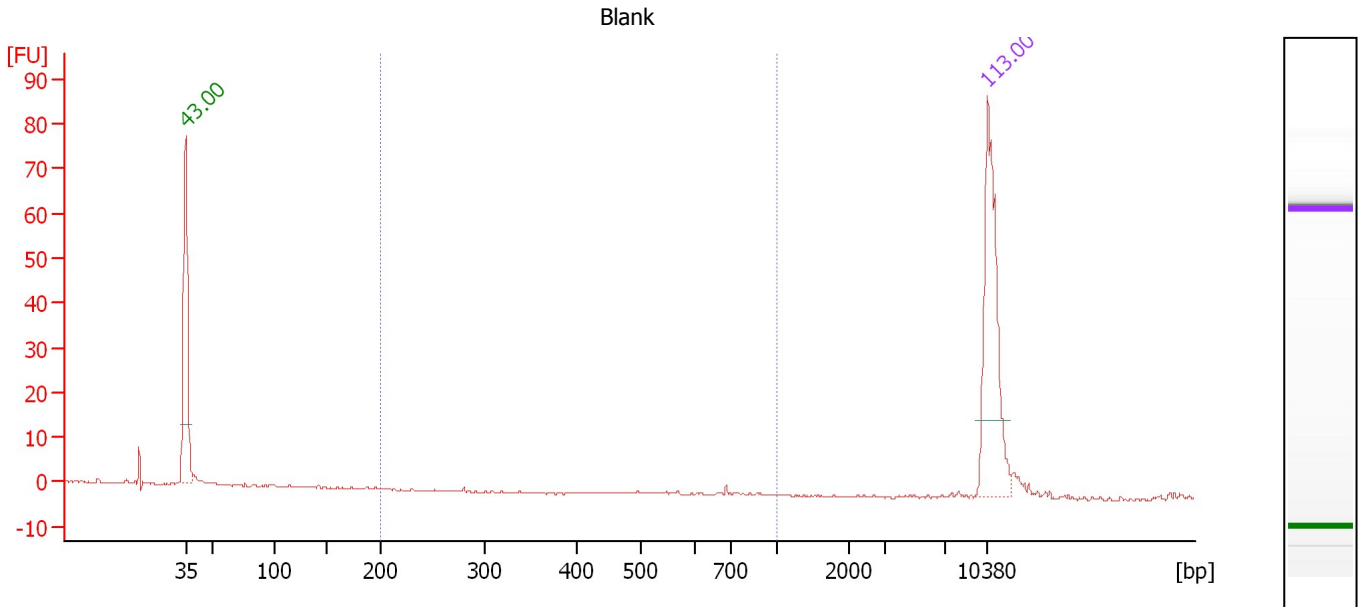
Region table for sample 4 : CNG KO 2 Sheared DNA

From [bp]	To [bp]	Average Size [bp]	Molarity [pmol/l]	Conc. [pg/μl]	Corr. Area	% of Total	Size distribution in CV [%]	Color
200	345	271	3,732.2	654.13	335.2	32	15.3	

Assay Class: High Sensitivity DNA Assay
 Data Path: C:\...ents and Settings\Bioanalyzer\2012-06-29\2012-06-29_001.xad

Created: 6/29/2012 12:12:12 PM
 Modified: 6/29/2012 12:59:01 PM

Electropherogram Summary Continued ...



Overall Results for sample 5 : Blank

Number of peaks found: 0 Corr. Area 1: 0.3
 Noise: 0.2

Peak table for sample 5 : Blank

Peak	Size [bp]	Conc. [pg/μl]	Molarity [pmol/l]	Observations
1	35	125.00	5,411.3	Lower Marker
2	10,380	75.00	10.9	Upper Marker

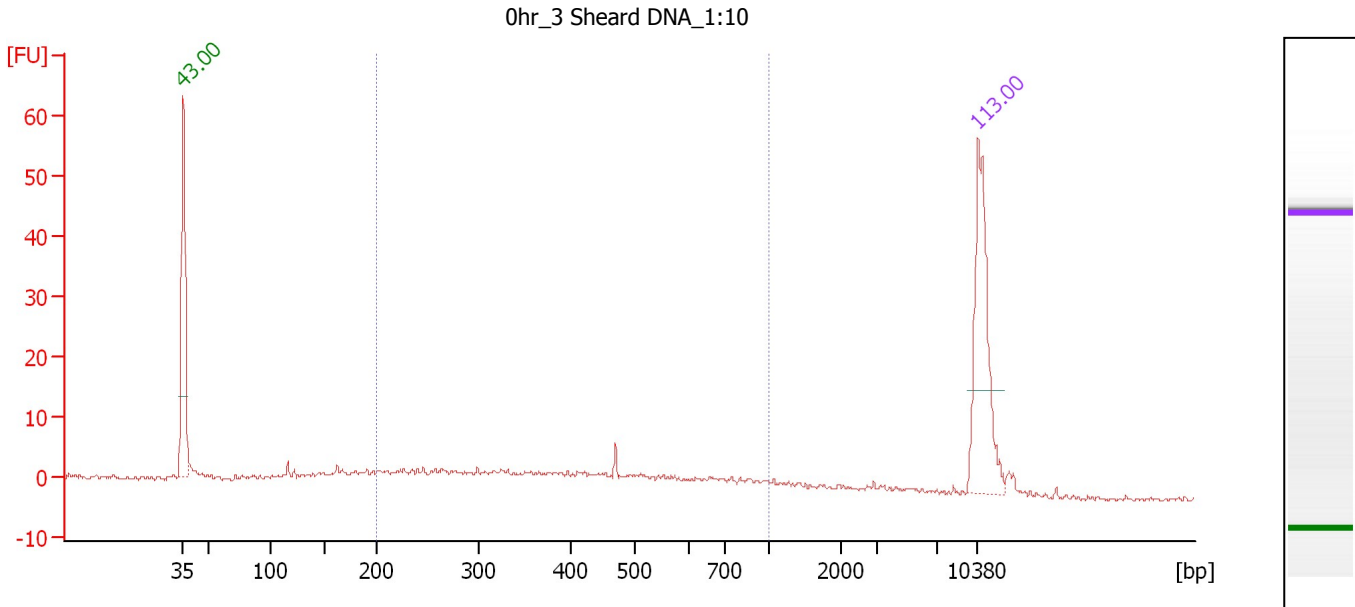
Region table for sample 5 : Blank

From [bp]	To [bp]	Average Size [bp]	Molarity [pmol/l]	Conc. [pg/μl]	Corr. Area	% of Total	Size distribution in CV [%]	Color
200	1,000	687	0.6	0.25	0.3	2	0.2	Blue

Assay Class: High Sensitivity DNA Assay
 Data Path: C:\...ents and Settings\Bioanalyzer\2012-06-29\2012-06-29_001.xad

Created: 6/29/2012 12:12:12 PM
 Modified: 6/29/2012 12:59:01 PM

Electropherogram Summary Continued ...



Overall Results for sample 6 : 0hr 3 Sheard DNA 1:10

Number of peaks found: 0 Corr. Area 1: 97.0
 Noise: 0.3

Peak table for sample 6 : 0hr 3 Sheard DNA 1:10

Peak	Size [bp]	Conc. [pg/μl]	Molarity [pmol/l]	Observations
1	35	125.00	5,411.3	Lower Marker
2	10,380	75.00	10.9	Upper Marker

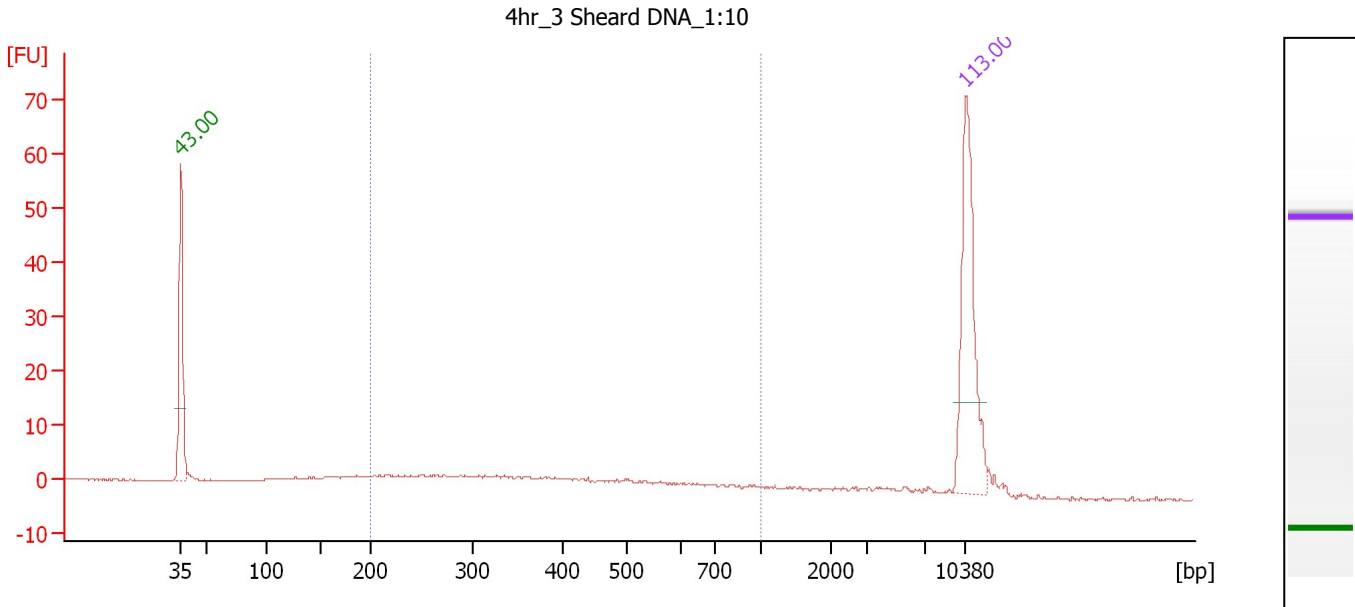
Region table for sample 6 : 0hr 3 Sheard DNA 1:10

From [bp]	To [bp]	Average Size [bp]	Molarity [pmol/l]	Conc. [pg/μl]	Corr. Area	% of Total	Size distribution in CV [%]	Color
200	1,000	440	660.3	152.67	97.0	63	41.9	Blue

Assay Class: High Sensitivity DNA Assay
 Data Path: C:\...ents and Settings\Bioanalyzer\2012-06-29\2012-06-29_001.xad

Created: 6/29/2012 12:12:12 PM
 Modified: 6/29/2012 12:59:01 PM

Electropherogram Summary Continued ...



Overall Results for sample 7 : 4hr 3 Sheard DNA 1:10

Number of peaks found: 0 Corr. Area 1: 77.3
 Noise: 0.2

Peak table for sample 7 : 4hr 3 Sheard DNA 1:10

Peak	Size [bp]	Conc. [pg/μl]	Molarity [pmol/l]	Observations
1	35	125.00	5,411.3	Lower Marker
2	10,380	75.00	10.9	Upper Marker

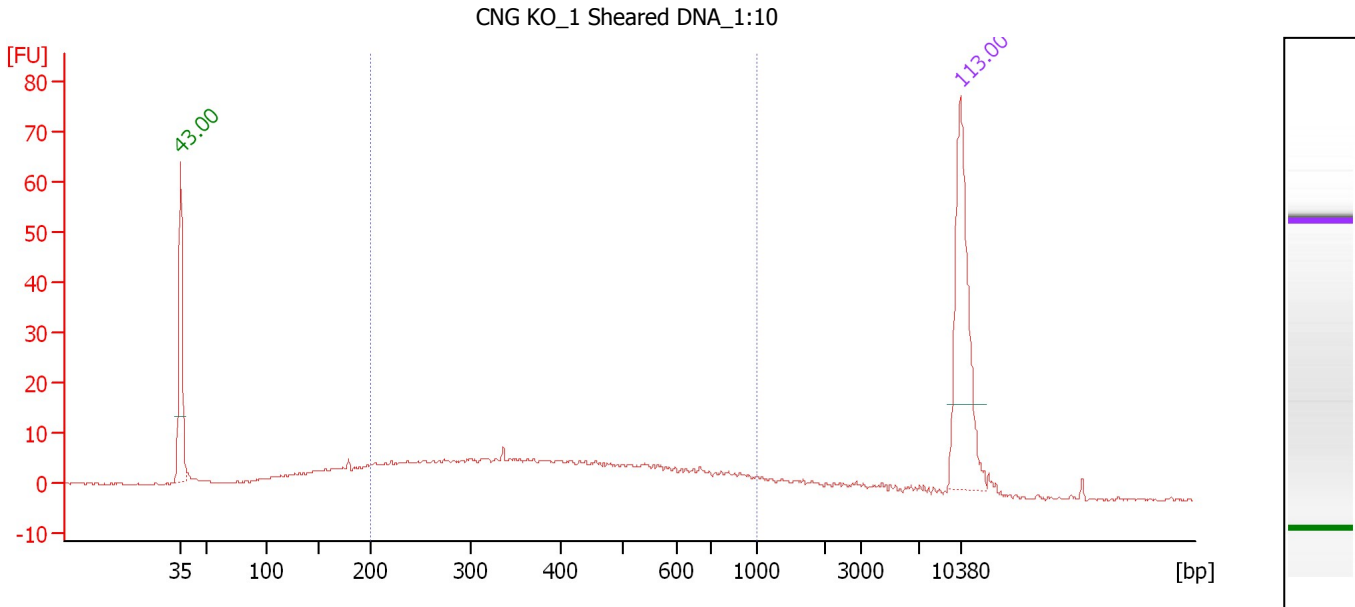
Region table for sample 7 : 4hr 3 Sheard DNA 1:10

From [bp]	To [bp]	Average Size [bp]	Molarity [pmol/l]	Conc. [pg/μl]	Corr. Area	% of Total	Size distribution in CV [%]	Color
200	1,000	421	450.0	100.92	77.3	61	41.8	Blue

Assay Class: High Sensitivity DNA Assay
 Data Path: C:\...ents and Settings\Bioanalyzer\2012-06-29\2012-06-29_001.xad

Created: 6/29/2012 12:12:12 PM
 Modified: 6/29/2012 12:59:01 PM

Electropherogram Summary Continued ...



Overall Results for sample 8 : CNG KO 1 Sheared DNA 1:10

Number of peaks found: 0 Corr. Area 1: 241.5
 Noise: 0.1

Peak table for sample 8 : CNG KO 1 Sheared DNA 1:10

Peak	Size [bp]	Conc. [pg/μl]	Molarity [pmol/l]	Observations
1	35	125.00	5,411.3	Lower Marker
2	10,380	75.00	10.9	Upper Marker

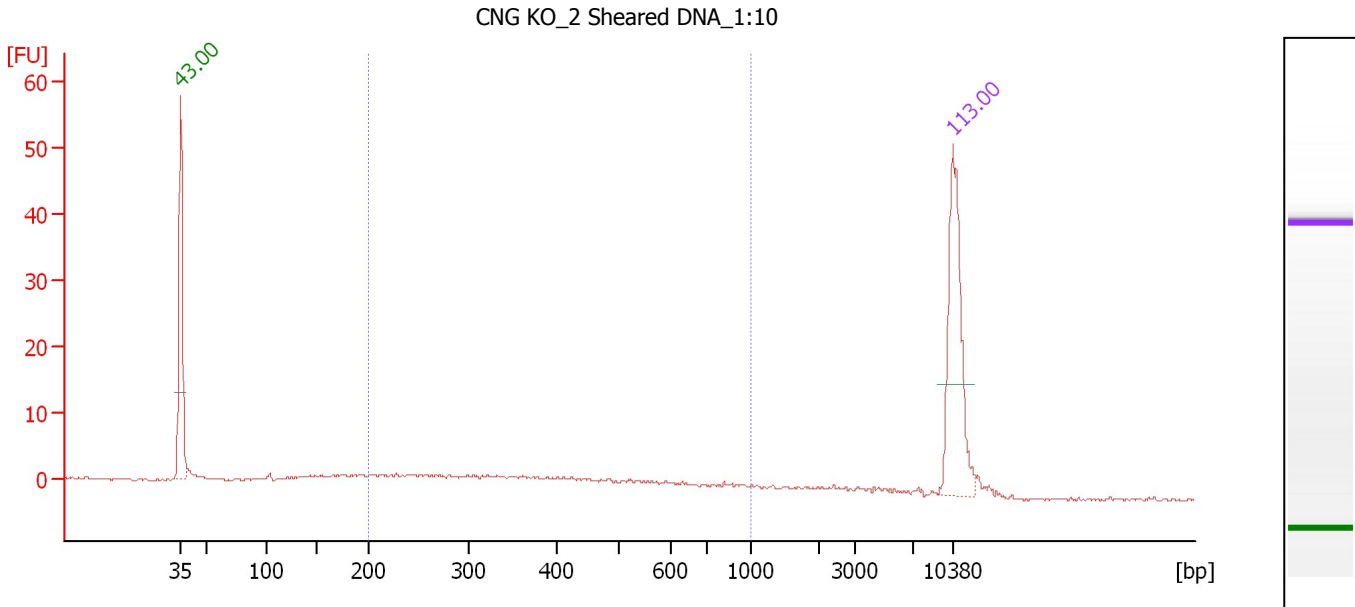
Region table for sample 8 : CNG KO 1 Sheared DNA 1:10

From [bp]	To [bp]	Average Size [bp]	Molarity [pmol/l]	Conc. [pg/μl]	Corr. Area	% of Total	Size distribution in CV [%]	Color
200	1,000	431	1,237.7	284.02	241.5	70	41.1	Blue

Assay Class: High Sensitivity DNA Assay
 Data Path: C:\...ents and Settings\Bioanalyzer\2012-06-29\2012-06-29_001.xad

Created: 6/29/2012 12:12:12 PM
 Modified: 6/29/2012 12:59:01 PM

Electropherogram Summary Continued ...



Overall Results for sample 9 : CNG KO 2 Sheared DNA 1:10

Number of peaks found: 0 Corr. Area 1: 59.6
 Noise: 0.2

Peak table for sample 9 : CNG KO 2 Sheared DNA 1:10

Peak	Size [bp]	Conc. [pg/μl]	Molarity [pmol/l]	Observations
1	35	125.00	5,411.3	Lower Marker
2	10,380	75.00	10.9	Upper Marker

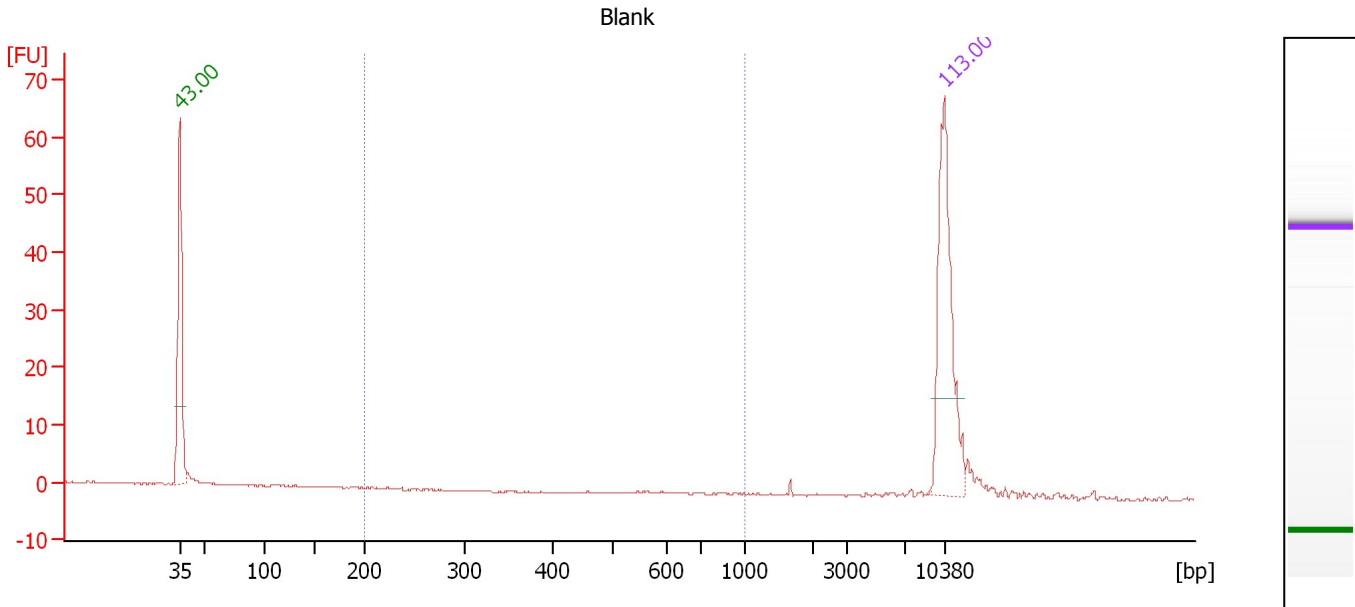
Region table for sample 9 : CNG KO 2 Sheared DNA 1:10

From [bp]	To [bp]	Average Size [bp]	Molarity [pmol/l]	Conc. [pg/μl]	Corr. Area	% of Total	Size distribution in CV [%]	Color
200	1,000	419	472.2	105.31	59.6	61	42.2	Blue

Assay Class: High Sensitivity DNA Assay
 Data Path: C:\...ents and Settings\Bioanalyzer\2012-06-29\2012-06-29_001.xad

Created: 6/29/2012 12:12:12 PM
 Modified: 6/29/2012 12:59:01 PM

Electropherogram Summary Continued ...



Overall Results for sample 10 : Blank

Number of peaks found: 0 Corr. Area 1: 0.0
 Noise: 0.1

Peak table for sample 10 : Blank

Peak	Size [bp]	Conc. [pg/μl]	Molarity [pmol/l]	Observations
1	35	125.00	5,411.3	Lower Marker
2	10,380	75.00	10.9	Upper Marker

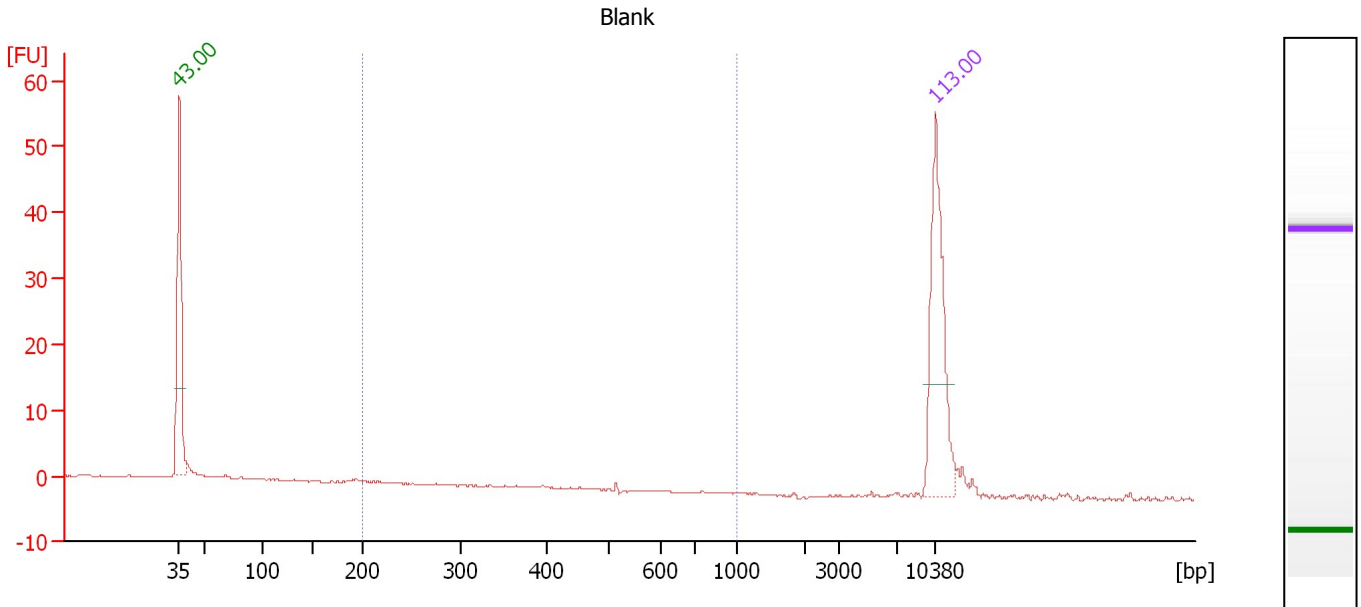
Region table for sample 10 : Blank

From [bp]	To [bp]	Average Size [bp]	Molarity [pmol/l]	Conc. [pg/μl]	Corr. Area	% of Total	Size distribution in CV [%]	Color
200	1,000	0	0.0	0.00	0.0	0	0.0	Blue

Assay Class: High Sensitivity DNA Assay
 Data Path: C:\...ents and Settings\Bioanalyzer\2012-06-29\2012-06-29_001.xad

Created: 6/29/2012 12:12:12 PM
 Modified: 6/29/2012 12:59:01 PM

Electropherogram Summary Continued ...



Overall Results for sample 11 : Blank

Number of peaks found: 0 Corr. Area 1: 0.3
 Noise: 0.1

Peak table for sample 11 : Blank

Peak	Size [bp]	Conc. [pg/μl]	Molarity [pmol/l]	Observations
1	35	125.00	5,411.3	Lower Marker
2	10,380	75.00	10.9	Upper Marker

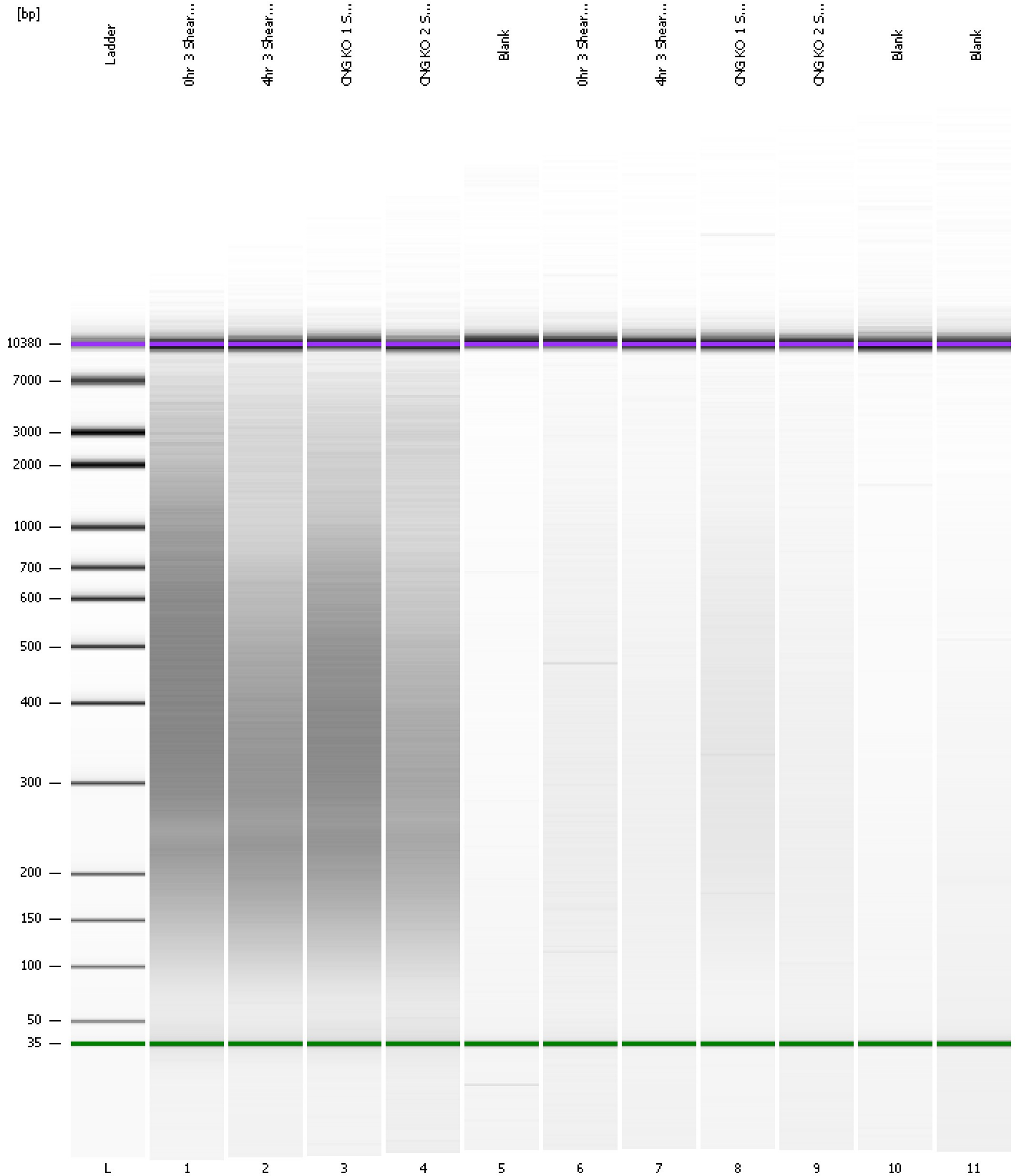
Region table for sample 11 : Blank

From [bp]	To [bp]	Average Size [bp]	Molarity [pmol/l]	Conc. [pg/μl]	Corr. Area	% of Total	Size distribution in CV [%]	Color
200	1,000	374	2.6	0.48	0.3	2	39.8	Blue

Assay Class: High Sensitivity DNA Assay
Data Path: C:\...ents and Settings\Bioanalyzer\2012-06-29\2012-06-29_001.xad

Created: 6/29/2012 12:12:12 PM
Modified: 6/29/2012 12:59:01 PM

Gel Image



Assay Class: High Sensitivity DNA Assay
 Data Path: C:\...ents and Settings\Bioanalyzer\2012-06-29\2012-06-29_001.xad

Created: 6/29/2012 12:12:12 PM
 Modified: 6/29/2012 12:59:01 PM

Run Logbook

Description	Number	Source	Category	Sub Category	Time	Time Zone	User	Host
Run ended on port 1 (Number of wells acquired: 12)		Instrument	Run		6/29/2012 12:53:34 PM	(GMT --07:00) Pacific Standard Time	UC Davis	D8XSMGH1
Run started on port 1 (File: C:\Documents and Settings\Bioanalyzer\2012-06-29\2012-06-29_001.xad)		Instrument	Run		6/29/2012 12:12:18 PM	(GMT --07:00) Pacific Standard Time	UC Davis	D8XSMGH1
Product Number : G2938B		Instrument	Run		6/29/2012 12:12:18 PM	(GMT --07:00) Pacific Standard Time	UC Davis	D8XSMGH1
Name :		Instrument	Run		6/29/2012 12:12:18 PM	(GMT --07:00) Pacific Standard Time	UC Davis	D8XSMGH1
Vendor : Agilent Technologies		Instrument	Run		6/29/2012 12:12:18 PM	(GMT --07:00) Pacific Standard Time	UC Davis	D8XSMGH1
Serial# : DE13701086		Instrument	Run		6/29/2012 12:12:18 PM	(GMT --07:00) Pacific Standard Time	UC Davis	D8XSMGH1
Firmware : C.01.069		Instrument	Run		6/29/2012 12:12:18 PM	(GMT --07:00) Pacific Standard Time	UC Davis	D8XSMGH1
Cartridge : Electrode		Instrument	Run		6/29/2012 12:12:18 PM	(GMT --07:00) Pacific Standard Time	UC Davis	D8XSMGH1