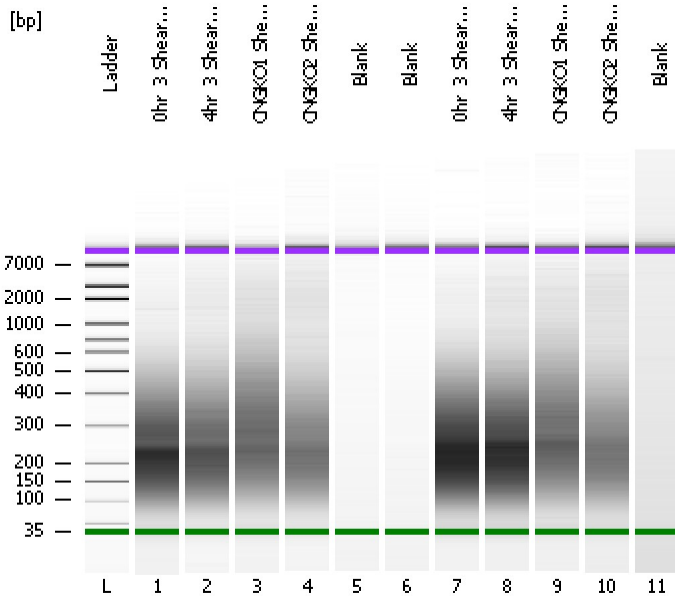


Assay Class: High Sensitivity DNA Assay  
Data Path: C:\...ents and Settings\Bioanalyzer\2012-06-29\2012-06-29\_002.xad

Created: 6/29/2012 4:08:13 PM  
Modified: 6/29/2012 4:49:59 PM

**Electrophoresis File Run Summary**



Instrument Information:

Instrument Name: DE13701086      Firmware: C.01.069  
Serial#: DE13701086      Type: G2938B

Assay Information:

Assay Origin Path: C:\Program Files\Agilent\2100 bioanalyzer\2100 expert\assays\dsDNA\High Sensitivity DNA.xsy  
Assay Class: High Sensitivity DNA Assay  
Version: 1.03  
Assay Comments: Copyright © 2003-2010 Agilent Technologies

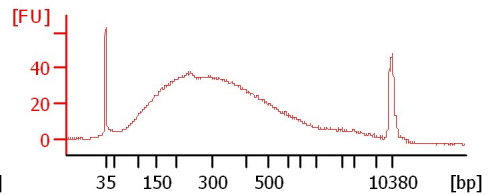
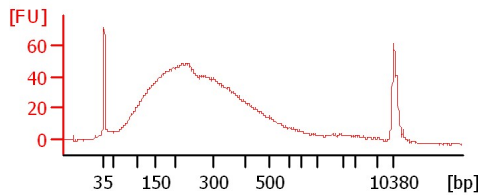
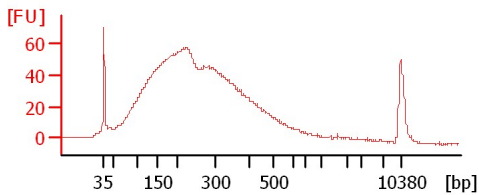
Chip Information:

Chip Lot #:  
Reagent Kit Lot #:  
Chip Comments:

**0hr\_3 Sheared DNA**

**4hr\_3 Sheared DNA**

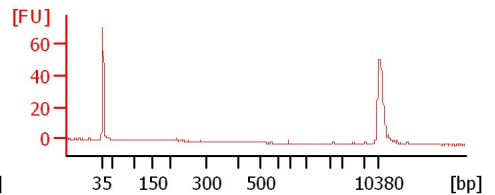
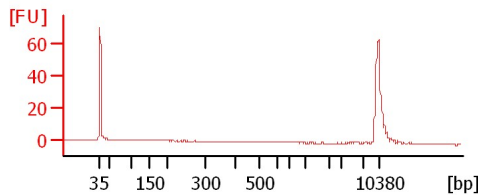
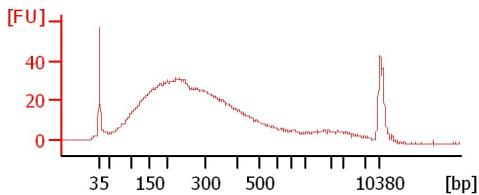
**CNGK01 Sheared DNA**



**CNGK02 Sheared DNA**

**Blank**

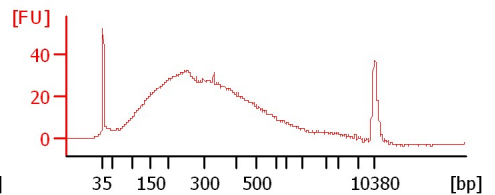
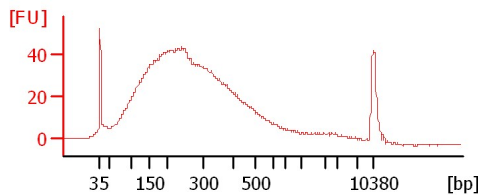
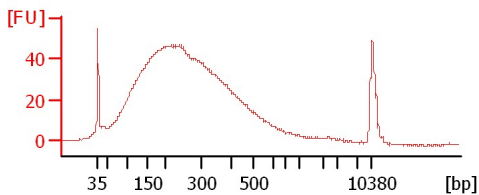
**Blank**



**0hr\_3 Sheared DNA**

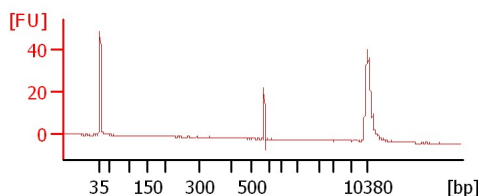
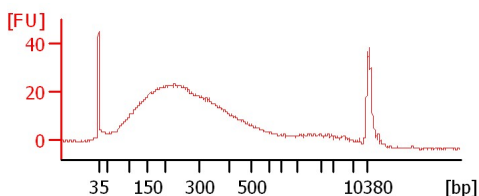
**4hr\_3 Sheared DNA**

**CNGK01 Sheared DNA**



**CNGK02 Sheared DNA**

**Blank**



Assay Class: High Sensitivity DNA Assay  
 Data Path: C:\...ents and Settings\Bioanalyzer\2012-06-29\2012-06-29\_002.xad

Created: 6/29/2012 4:08:13 PM  
 Modified: 6/29/2012 4:49:59 PM

**Electrophoresis File Run Summary (Chip Summary)**

Sample Name	Sample Comment	Rest. Digest	Status	Observation	Result Label	Result Color
0hr_3 Sheared DNA		<input type="checkbox"/>	✓			
4hr_3 Sheared DNA		<input type="checkbox"/>	✓			
CNGKO1 Sheared DNA		<input type="checkbox"/>	✓			
CNGKO2 Sheared DNA		<input type="checkbox"/>	✓			
Blank		<input type="checkbox"/>	✓			
Blank		<input type="checkbox"/>	✓			
0hr_3 Sheared DNA		<input type="checkbox"/>	✓			
4hr_3 Sheared DNA		<input type="checkbox"/>	✓			
CNGKO1 Sheared DNA		<input type="checkbox"/>	✓			
CNGKO2 Sheared DNA		<input type="checkbox"/>	✓			
Blank		<input type="checkbox"/>	✓			
Ladder		<input type="checkbox"/>	✓			

**Chip Lot #**

**Reagent Kit Lot #**

**Chip Comments :**

Assay Class: High Sensitivity DNA Assay  
Data Path: C:\...ents and Settings\Bioanalyzer\2012-06-29\2012-06-29\_002.xad

Created: 6/29/2012 4:08:13 PM  
Modified: 6/29/2012 4:49:59 PM

**Electrophoresis Assay Details**

**General Analysis Settings**

Number of Available Sample and Ladder Wells (Max.) : 12  
Minimum Visible Range [s] : 32  
Maximum Visible Range [s] : 138  
Start Analysis Time Range [s] : 33  
End Analysis Time Range [s] : 137.5  
Ladder Concentration [pg/μl] : 1950  
Uses Standard Area for Ladder Fragments  
Lower Marker Concentration [pg/μl] : 125  
Upper Marker Concentration [pg/μl] : 75  
Used Upper Marker for Quantitation  
Standard Curve Fit is Point to Point  
Show Data Aligned to Lower and Upper Marker

**Integrator Settings**

Integration Start Time [s] : 33.05  
Integration End Time [s] : 137  
Slope Threshold : 0.8  
Height Threshold [FU] : 5  
Area Threshold : 0.1  
Width Threshold [s] : 0.6  
Baseline Plateau [s] : 0.5

**Filter Settings**

Filter Width [s] : 0.5  
Polynomial Order : 4

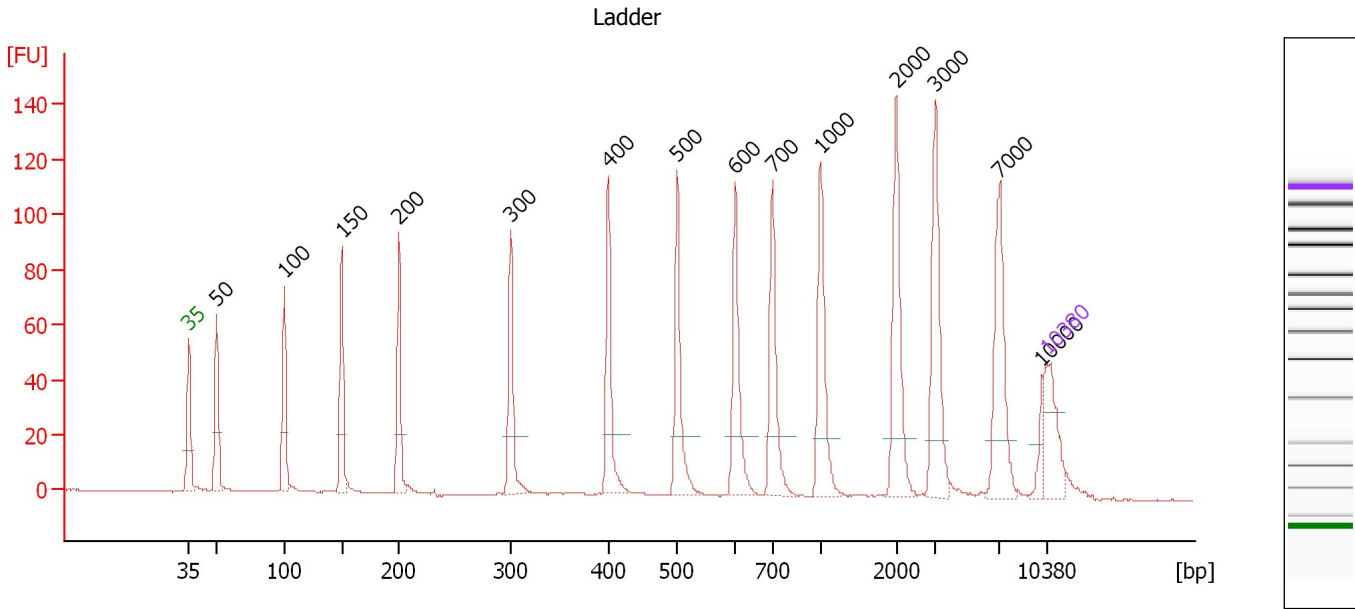
**Ladder**

Ladder Peak	Size	Area
1	35	160
2	50	210
3	100	208
4	150	221
5	200	242
6	300	270
7	400	305
8	500	306
9	600	336
10	700	321
11	1000	366
12	2000	413
13	3000	411
14	7000	400
15	10380	214

Assay Class: High Sensitivity DNA Assay  
 Data Path: C:\...ents and Settings\Bioanalyzer\2012-06-29\2012-06-29\_002.xad

Created: 6/29/2012 4:08:13 PM  
 Modified: 6/29/2012 4:49:59 PM

**Electropherogram Summary**



**Overall Results for Ladder**

Noise: 0.2

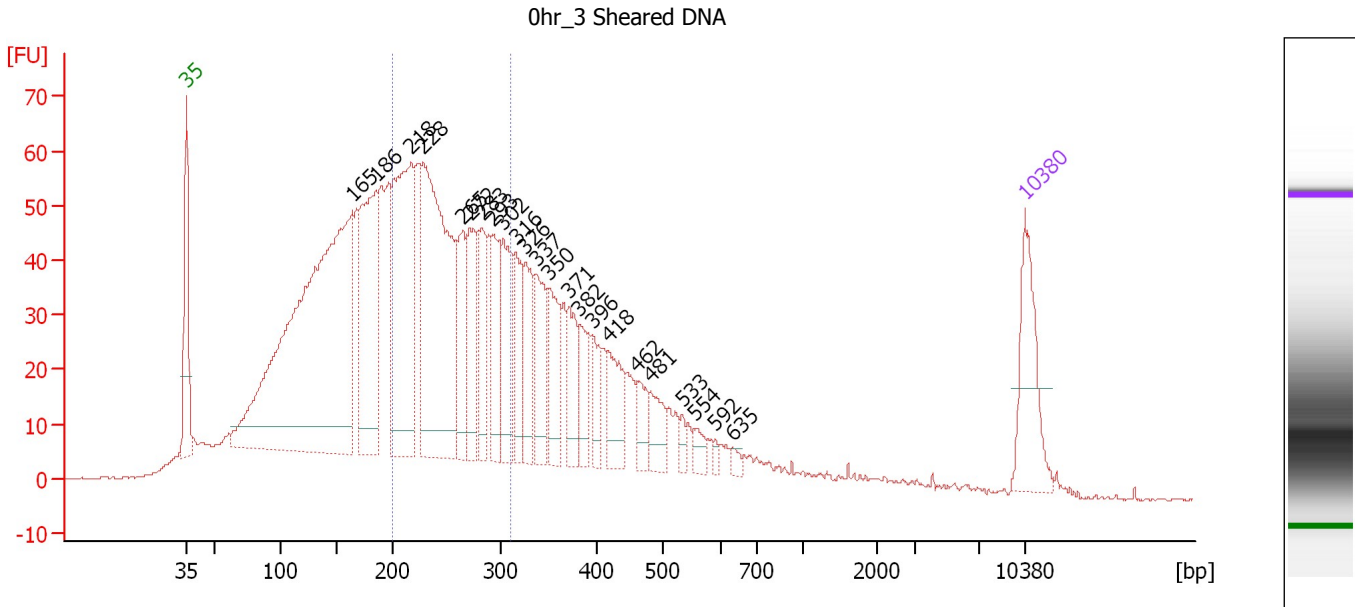
**Peak table for Ladder**

Peak	Size [bp]	Conc. [pg/μl]	Molarity [pmol/l]	Observations
1	35	125.00	5,411.3	Lower Marker
2	50	150.00	4,545.5	Ladder Peak
3	100	150.00	2,272.7	Ladder Peak
4	150	150.00	1,515.2	Ladder Peak
5	200	150.00	1,136.4	Ladder Peak
6	300	150.00	757.6	Ladder Peak
7	400	150.00	568.2	Ladder Peak
8	500	150.00	454.5	Ladder Peak
9	600	150.00	378.8	Ladder Peak
10	700	150.00	324.7	Ladder Peak
11	1,000	150.00	227.3	Ladder Peak
12	2,000	150.00	113.6	Ladder Peak
13	3,000	150.00	75.8	Ladder Peak
14	7,000	150.00	32.5	Ladder Peak
15	10,000	0.00	0.0	
16	10,380	75.00	10.9	Upper Marker

Assay Class: High Sensitivity DNA Assay  
 Data Path: C:\...ents and Settings\Bioanalyzer\2012-06-29\2012-06-29\_002.xad

Created: 6/29/2012 4:08:13 PM  
 Modified: 6/29/2012 4:49:59 PM

**Electropherogram Summary Continued ...**



**Overall Results for sample 1 : 0hr\_3 Sheared DNA**

Number of peaks found: 23                      Corr. Area 1: 824.7  
 Noise: 0.2

**Peak table for sample 1 : 0hr\_3 Sheared DNA**

Peak	Size [bp]	Conc. [pg/μl]	Molarity [pmol/l]	Observations
1	35	125.00	5,411.3	Lower Marker
2	165	915.52	8,420.9	
3	186	254.38	2,069.3	
4	218	314.92	2,186.8	
5	228	427.70	2,836.8	
6	265	97.32	557.5	
7	272	92.65	516.4	
8	283	75.39	403.6	
9	293	90.50	468.3	
10	302	89.76	449.8	
11	316	69.93	335.5	
12	326	72.78	338.4	
13	337	84.22	379.2	
14	350	75.01	324.7	
15	371	58.66	239.4	
16	382	45.14	178.9	
17	396	33.29	127.3	
18	418	59.39	215.3	
19	462	29.28	96.1	
20	481	35.50	111.9	
21	533	10.06	28.6	
22	554	14.97	40.9	
23	592	5.63	14.4	
24	635	7.19	17.1	
25	10,380	75.00	10.9	Upper Marker

Assay Class: High Sensitivity DNA Assay  
Data Path: C:\...ents and Settings\Bioanalyzer\2012-06-29\2012-06-29\_002.xad

Created: 6/29/2012 4:08:13 PM  
Modified: 6/29/2012 4:49:59 PM

**Electropherogram Summary Continued ...**

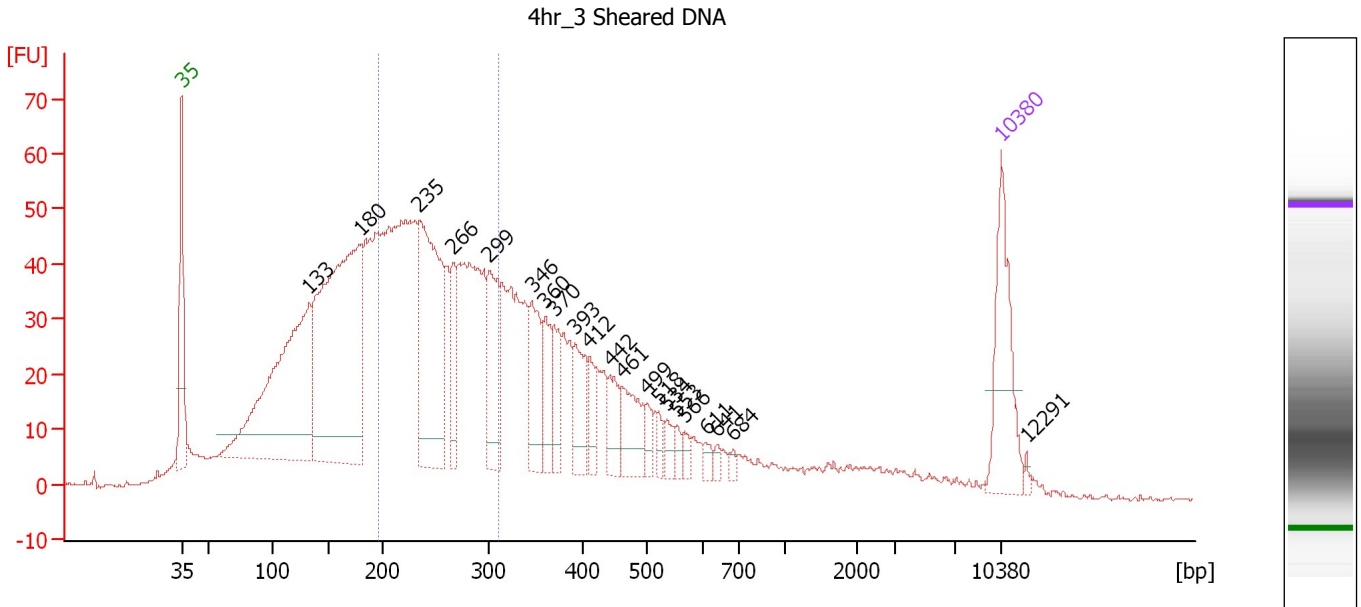
... Region table for sample 1 : 0hr\_3 Sheared DNA

From [bp]	To [bp]	Average Size [bp]	Molarity [pmol/l]	Conc. [pg/μl]	Corr. Area	% of Total	Size distribution in CV [%]	Color
200	309	251	8,800.6	1,450.48	824.7	33	12.6	■

Assay Class: High Sensitivity DNA Assay  
 Data Path: C:\...ents and Settings\Bioanalyzer\2012-06-29\2012-06-29\_002.xad

Created: 6/29/2012 4:08:13 PM  
 Modified: 6/29/2012 4:49:59 PM

**Electropherogram Summary Continued ...**



**Overall Results for sample 2 : 4hr\_3 Sheared DNA**

Number of peaks found: 21                      Corr. Area 1: 733.6  
 Noise: 0.2

**Peak table for sample 2 : 4hr\_3 Sheared DNA**

Peak	Size [bp]	Conc. [pg/μl]	Molarity [pmol/l]	Observations
1	35	125.00	5,411.3	Lower Marker
2	133	404.49	4,604.2	
3	180	482.83	4,053.8	
4	235	255.74	1,648.9	
5	266	54.22	308.3	
6	299	95.68	484.2	
7	346	65.78	287.8	
8	360	44.48	187.2	
9	370	39.08	159.9	
10	393	50.47	194.7	
11	412	21.63	79.7	
12	442	33.04	113.2	
13	461	49.19	161.6	
14	499	15.64	47.5	
15	518	10.87	31.8	
16	534	13.71	38.9	
17	553	8.45	23.2	
18	566	9.03	24.1	
19	611	7.54	18.7	
20	641	6.00	14.2	
21	684	4.50	10.0	
22	10,380	75.00	10.9	Upper Marker
23	12,291	0.00	0.0	

Assay Class: High Sensitivity DNA Assay  
Data Path: C:\...ents and Settings\Bioanalyzer\2012-06-29\2012-06-29\_002.xad

Created: 6/29/2012 4:08:13 PM  
Modified: 6/29/2012 4:49:59 PM

**Electropherogram Summary Continued ...**

... Region table for sample 2 : 4hr 3 Sheared DNA

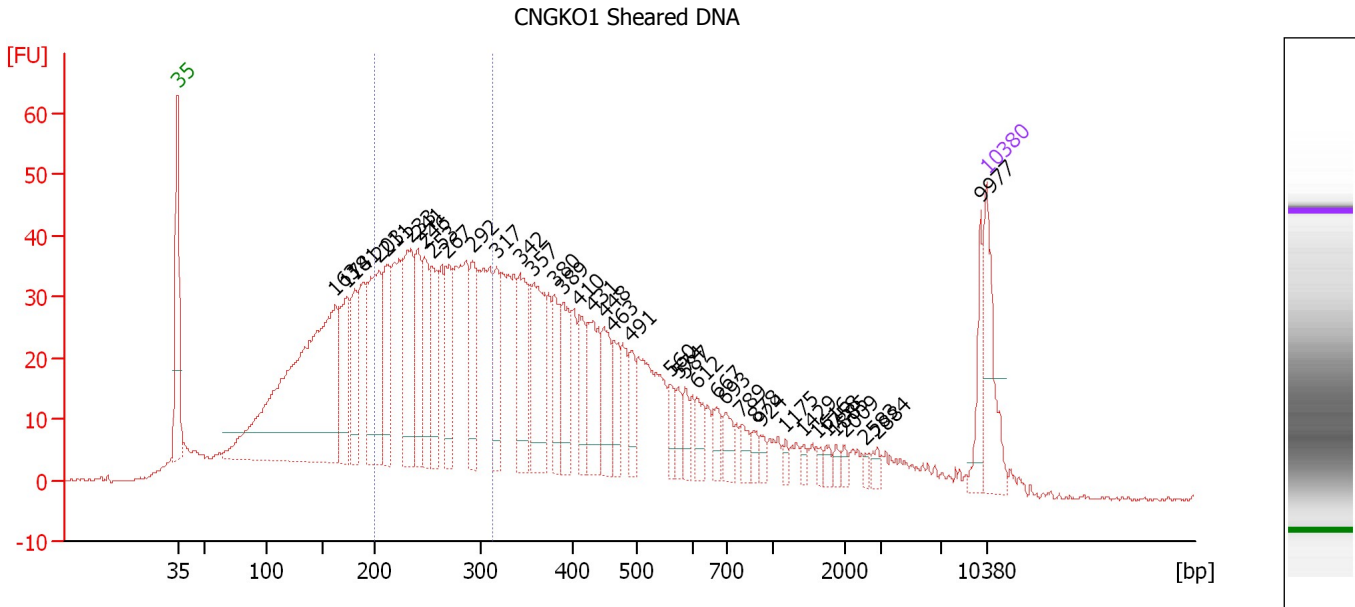
From [bp]	To [bp]	Average Size [bp]	Molarity [pmol/l]	Conc. [pg/μl]	Corr. Area	% of Total	Size distribution in CV [%]	Color
197	310	250	7,130.5	1,166.69	733.6	33	13.0	■



Assay Class: High Sensitivity DNA Assay  
 Data Path: C:\...ents and Settings\Bioanalyzer\2012-06-29\2012-06-29\_002.xad

Created: 6/29/2012 4:08:13 PM  
 Modified: 6/29/2012 4:49:59 PM

**Electropherogram Summary Continued ...**



**Overall Results for sample 3 : CNGK01 Sheared DNA**

Number of peaks found: 39                      Corr. Area 1: 600.6  
 Noise: 0.3

**Peak table for sample 3 : CNGK01 Sheared DNA**

Peak	Size [bp]	Conc. [pg/μl]	Molarity [pmol/l]	Observations
1	35	125.00	5,411.3	Lower Marker
2	163	741.06	6,901.8	
3	174	129.21	1,127.7	
4	181	91.72	767.7	
5	203	208.94	1,556.3	
6	211	96.46	692.7	
7	233	180.04	1,172.1	
8	241	102.79	646.8	
9	246	97.93	602.2	
10	253	99.33	593.8	
11	267	103.52	587.2	
12	292	92.88	481.3	
13	317	85.51	409.0	
14	342	108.29	479.4	
15	357	133.13	565.4	
16	380	72.23	288.0	
17	389	76.12	296.3	
18	410	57.96	214.1	
19	431	95.80	336.9	
20	448	64.50	218.1	
21	463	47.71	156.2	
22	491	34.85	107.6	
23	560	23.81	64.4	
24	574	22.23	58.7	
25	587	23.03	59.5	
26	612	27.57	68.2	

Assay Class: High Sensitivity DNA Assay  
 Data Path: C:\...ents and Settings\Bioanalyzer\2012-06-29\2012-06-29\_002.xad

Created: 6/29/2012 4:08:13 PM  
 Modified: 6/29/2012 4:49:59 PM

**Electropherogram Summary Continued ...**

**... Peak table for sample 3 : CNGKO1 Sheared DNA**

Peak	Size [bp]	Conc. [pg/μl]	Molarity [pmol/l]	Observations
27	667	22.45	51.0	
28	693	26.56	58.1	
29	789	18.04	34.6	
30	878	12.59	21.7	
31	924	10.46	17.2	
32	1,175	7.80	10.1	
33	1,429	7.19	7.6	
34	1,616	6.81	6.4	
35	1,758	8.63	7.4	
36	1,885	6.97	5.6	
37	2,009	7.29	5.5	
38	2,583	5.65	3.3	
39	2,884	9.07	4.8	
40	9,977	38.44	5.8	
41	▶ 10,380	75.00	10.9	Upper Marker

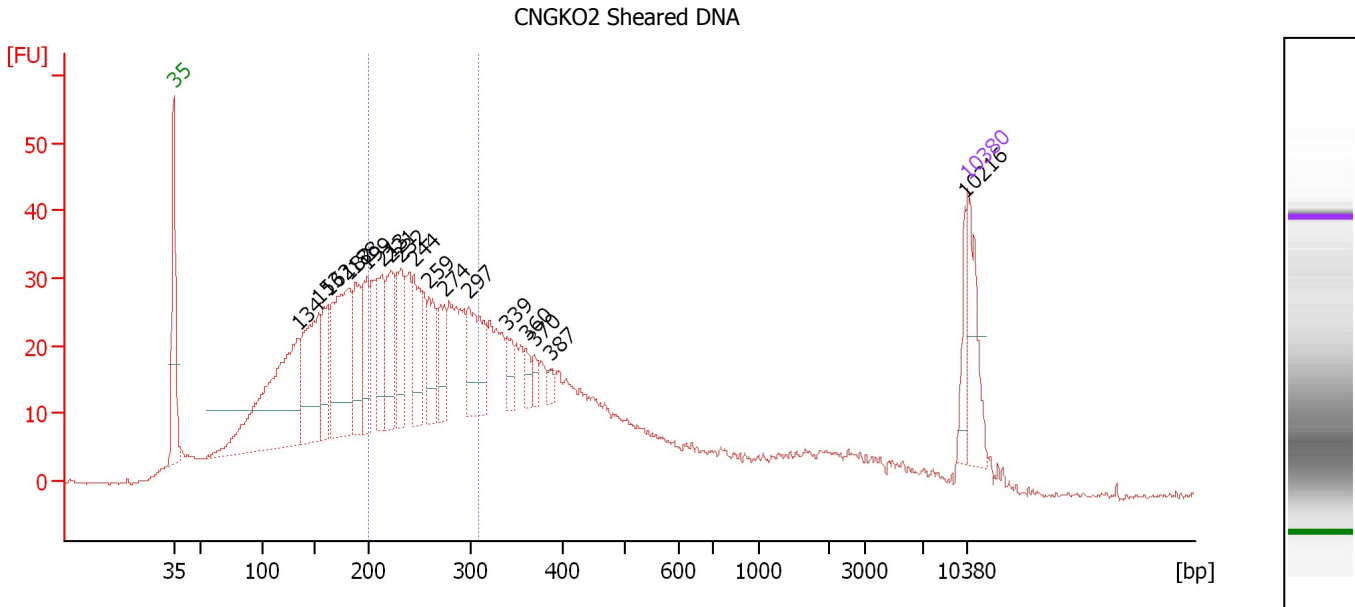
**Region table for sample 3 : CNGKO1 Sheared DNA**

From [bp]	To [bp]	Average Size [bp]	Molarity [pmol/l]	Conc. [pg/μl]	Corr. Area	% of Total	Size distribution in CV [%]	Color
200	313	255	9,766.5	1,633.36	600.6	30	12.6	■

Assay Class: High Sensitivity DNA Assay  
 Data Path: C:\...ents and Settings\Bioanalyzer\2012-06-29\2012-06-29\_002.xad

Created: 6/29/2012 4:08:13 PM  
 Modified: 6/29/2012 4:49:59 PM

**Electropherogram Summary Continued ...**



**Overall Results for sample 4 : CNGKO2 Sheared DNA**

Number of peaks found: 18                      Corr. Area 1: 455.9  
 Noise: 0.3

**Peak table for sample 4 : CNGKO2 Sheared DNA**

Peak	Size [bp]	Conc. [pg/μl]	Molarity [pmol/l]	Observations
1	35	125.00	5,411.3	Lower Marker
2	134	460.03	5,210.7	
3	153	236.83	2,340.5	
4	162	102.14	955.9	
5	182	280.60	2,341.0	
6	188	119.41	961.4	
7	199	103.31	787.4	
8	213	100.41	713.6	
9	221	119.60	818.4	
10	232	103.46	676.5	
11	244	101.89	632.5	
12	259	88.45	517.4	
13	274	63.89	352.7	
14	297	137.04	698.9	
15	339	33.54	149.8	
16	360	24.54	103.2	
17	370	18.34	75.1	
18	387	13.12	51.3	
19	10,216	36.84	5.5	
20	10,380	75.00	10.9	Upper Marker

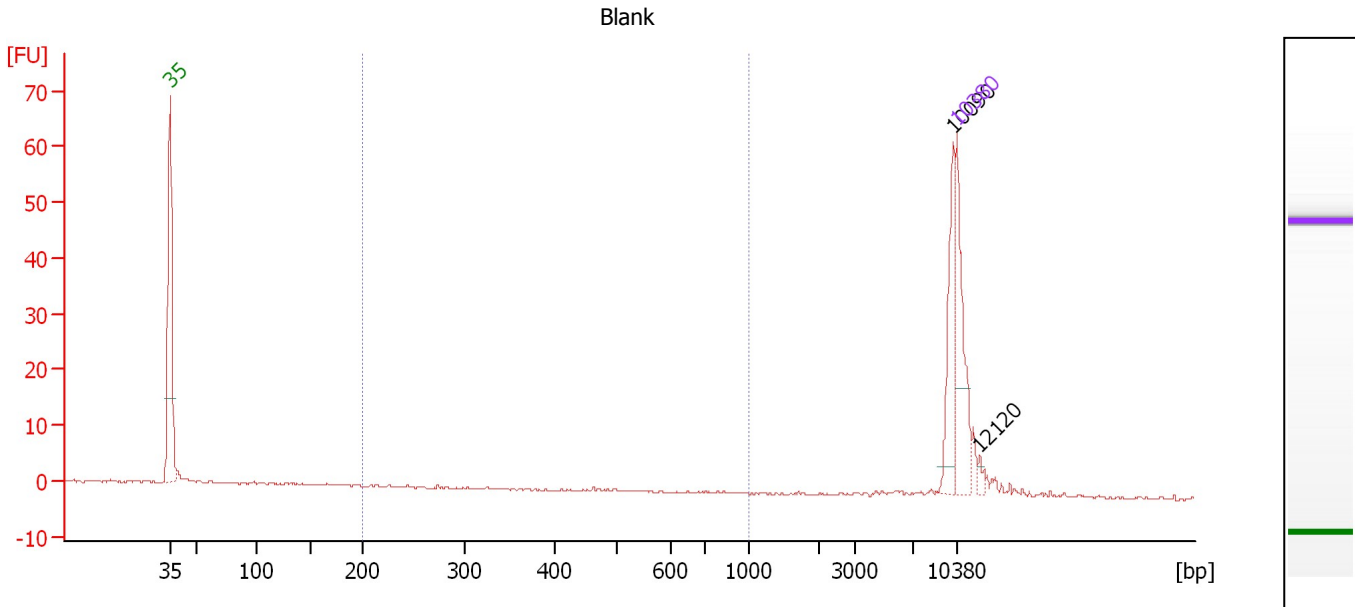
**Region table for sample 4 : CNGKO2 Sheared DNA**

From [bp]	To [bp]	Average Size [bp]	Molarity [pmol/l]	Conc. [pg/μl]	Corr. Area	% of Total	Size distribution in CV [%]	Color
200	308	251	9,711.3	1,602.24	455.9	31	12.4	Blue

Assay Class: High Sensitivity DNA Assay  
 Data Path: C:\...ents and Settings\Bioanalyzer\2012-06-29\2012-06-29\_002.xad

Created: 6/29/2012 4:08:13 PM  
 Modified: 6/29/2012 4:49:59 PM

**Electropherogram Summary Continued ...**



**Overall Results for sample 5 : Blank**

Number of peaks found: 2                      Corr. Area 1: 0.2  
 Noise: 0.2

**Peak table for sample 5 : Blank**

Peak	Size [bp]	Conc. [pg/μl]	Molarity [pmol/l]	Observations
1	35	125.00	5,411.3	Lower Marker
2	10,090	64.54	9.7	
3	10,380	75.00	10.9	Upper Marker
4	12,120	0.00	0.0	

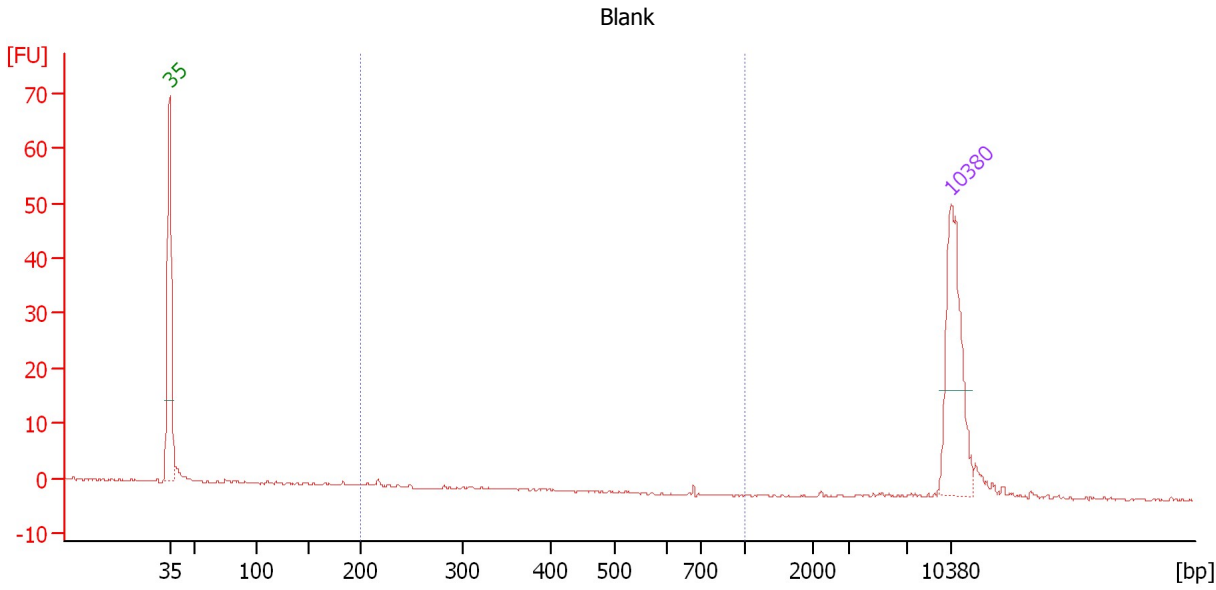
**Region table for sample 5 : Blank**

From [bp]	To [bp]	Average Size [bp]	Molarity [pmol/l]	Conc. [pg/μl]	Corr. Area	% of Total	Size distribution in CV [%]	Color
200	1,000	387	1.9	0.40	0.2	0	40.4	Blue

Assay Class: High Sensitivity DNA Assay  
 Data Path: C:\...ents and Settings\Bioanalyzer\2012-06-29\2012-06-29\_002.xad

Created: 6/29/2012 4:08:13 PM  
 Modified: 6/29/2012 4:49:59 PM

**Electropherogram Summary Continued ...**



**Overall Results for sample 6 : Blank**

Number of peaks found: 0                      Corr. Area 1: 0.4  
 Noise: 0.1

**Peak table for sample 6 : Blank**

Peak	Size [bp]	Conc. [pg/μl]	Molarity [pmol/l]	Observations
1	35	125.00	5,411.3	Lower Marker
2	10,380	75.00	10.9	Upper Marker

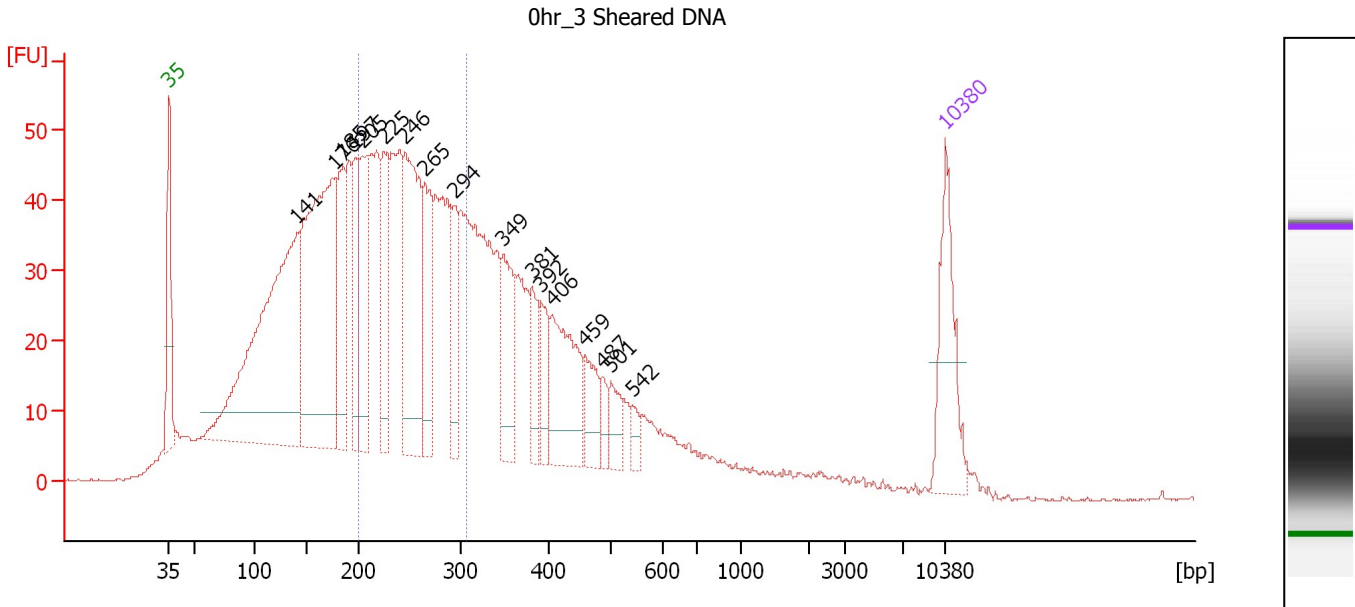
**Region table for sample 6 : Blank**

From [bp]	To [bp]	Average Size [bp]	Molarity [pmol/l]	Conc. [pg/μl]	Corr. Area	% of Total	Size distribution in CV [%]	Color
200	1,000	405	3.9	0.67	0.4	4	56.0	Blue

Assay Class: High Sensitivity DNA Assay  
 Data Path: C:\...ents and Settings\Bioanalyzer\2012-06-29\2012-06-29\_002.xad

Created: 6/29/2012 4:08:13 PM  
 Modified: 6/29/2012 4:49:59 PM

**Electropherogram Summary Continued ...**



**Overall Results for sample 7 : 0hr\_3 Sheared DNA**

Number of peaks found: 17                      Corr. Area 1: 700.9  
 Noise: 0.1

**Peak table for sample 7 : 0hr\_3 Sheared DNA**

Peak	Size [bp]	Conc. [pg/μl]	Molarity [pmol/l]	Observations
1	35	125.00	5,411.3	Lower Marker
2	141	534.18	5,760.4	
3	176	433.36	3,729.3	
4	185	123.39	1,011.4	
5	197	89.56	689.7	
6	205	115.87	858.2	
7	225	91.74	618.9	
8	246	208.59	1,286.6	
9	265	99.76	571.2	
10	294	64.26	331.1	
11	349	79.46	345.2	
12	381	37.90	150.5	
13	392	36.37	140.7	
14	406	117.40	437.9	
15	459	41.80	138.1	
16	487	17.76	55.3	
17	501	28.25	85.5	
18	542	13.73	38.4	
19	10,380	75.00	10.9	Upper Marker

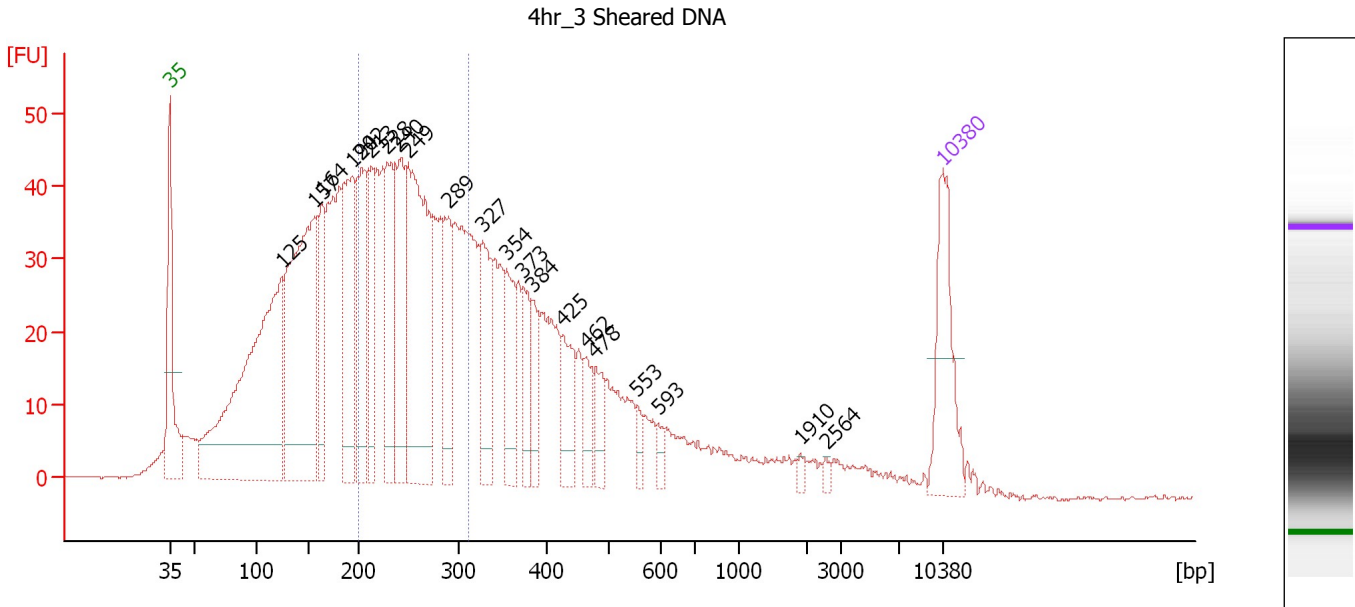
**Region table for sample 7 : 0hr\_3 Sheared DNA**

From [bp]	To [bp]	Average Size [bp]	Molarity [pmol/l]	Conc. [pg/μl]	Corr. Area	% of Total	Size distribution in CV [%]	Color
200	308	251	7,849.1	1,295.25	700.9	33	12.3	Blue

Assay Class: High Sensitivity DNA Assay  
 Data Path: C:\...ents and Settings\Bioanalyzer\2012-06-29\2012-06-29\_002.xad

Created: 6/29/2012 4:08:13 PM  
 Modified: 6/29/2012 4:49:59 PM

**Electropherogram Summary Continued ...**



**Overall Results for sample 8 : 4hr 3 Sheared DNA**

Number of peaks found: 21                      Corr. Area 1: 645.3  
 Noise: 0.2

**Peak table for sample 8 : 4hr 3 Sheared DNA**

Peak	Size [bp]	Conc. [pg/μl]	Molarity [pmol/l]	Observations
1	35	125.00	5,411.3	Lower Marker
2	125	500.19	6,051.8	
3	157	398.25	3,850.9	
4	164	99.05	915.3	
5	194	183.85	1,439.0	
6	202	148.41	1,110.6	
7	213	90.68	646.5	
8	228	128.59	853.0	
9	240	125.64	793.0	
10	249	291.33	1,776.1	
11	289	77.49	406.6	
12	327	94.06	436.4	
13	354	68.31	292.4	
14	373	46.54	189.2	
15	384	39.58	156.3	
16	425	55.35	197.3	
17	462	31.91	104.6	
18	478	32.01	101.5	
19	553	12.38	33.9	
20	593	11.39	29.1	
21	1,910	3.71	2.9	
22	2,564	3.76	2.2	
23	10,380	75.00	10.9	Upper Marker

Assay Class: High Sensitivity DNA Assay  
Data Path: C:\...ents and Settings\Bioanalyzer\2012-06-29\2012-06-29\_002.xad

Created: 6/29/2012 4:08:13 PM  
Modified: 6/29/2012 4:49:59 PM

**Electropherogram Summary Continued ...**

... Region table for sample 8 : 4hr 3 Sheared DNA

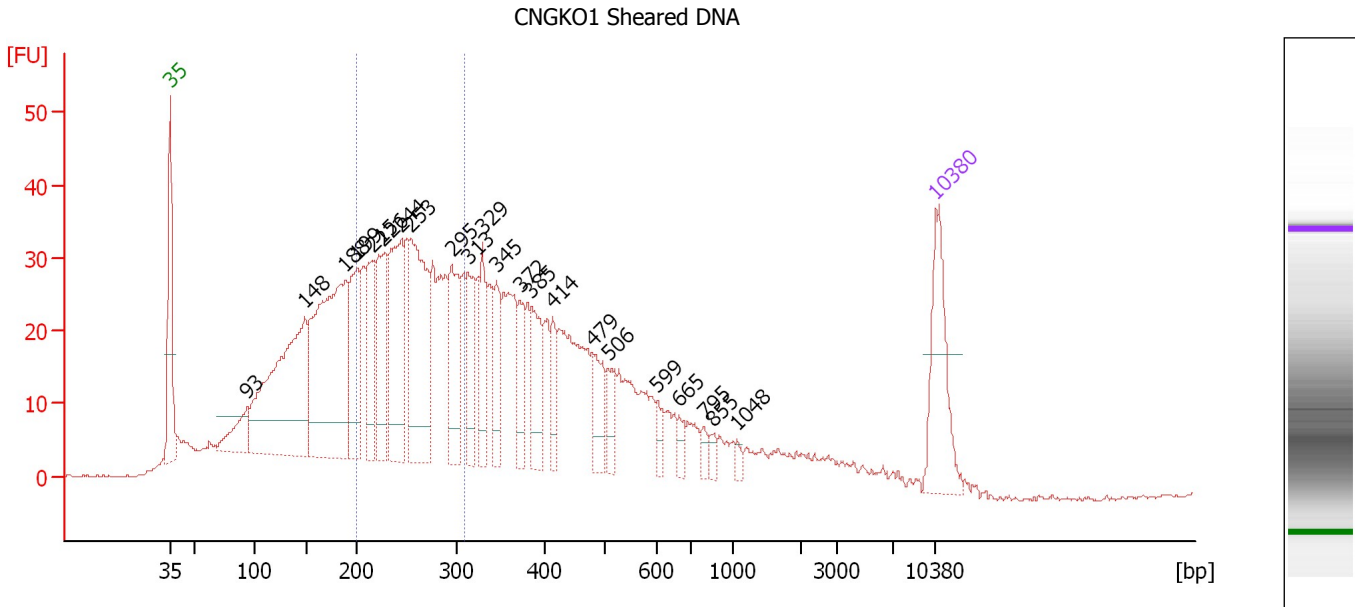
From [bp]	To [bp]	Average Size [bp]	Molarity [pmol/l]	Conc. [pg/μl]	Corr. Area	% of Total	Size distribution in CV [%]	Color
200	311	252	7,335.2	1,212.57	645.3	33	12.5	■



Assay Class: High Sensitivity DNA Assay  
 Data Path: C:\...ents and Settings\Bioanalyzer\2012-06-29\2012-06-29\_002.xad

Created: 6/29/2012 4:08:13 PM  
 Modified: 6/29/2012 4:49:59 PM

**Electropherogram Summary Continued ...**



**Overall Results for sample 9 : CNGK01 Sheared DNA**

Number of peaks found: 22                      Corr. Area 1: 478.1  
 Noise: 0.3

**Peak table for sample 9 : CNGK01 Sheared DNA**

Peak	Size [bp]	Conc. [pg/μl]	Molarity [pmol/l]	Observations
1	35	125.00	5,411.3	Lower Marker
2	93	56.03	908.1	
3	148	333.76	3,406.4	
4	188	342.25	2,754.5	
5	199	107.91	820.5	
6	215	73.45	518.3	
7	226	110.97	744.1	
8	244	158.70	985.1	
9	253	189.76	1,135.7	
10	295	95.80	492.4	
11	313	67.00	324.3	
12	329	51.28	236.2	
13	345	51.49	226.2	
14	372	41.84	170.5	
15	385	56.98	224.1	
16	414	31.75	116.2	
17	479	44.90	142.0	
18	506	29.19	87.4	
19	599	13.35	33.8	
20	665	10.41	23.7	
21	795	8.88	16.9	
22	855	7.78	13.8	
23	1,048	6.51	9.4	
24	10,380	75.00	10.9	Upper Marker

Assay Class: High Sensitivity DNA Assay  
Data Path: C:\...ents and Settings\Bioanalyzer\2012-06-29\2012-06-29\_002.xad

Created: 6/29/2012 4:08:13 PM  
Modified: 6/29/2012 4:49:59 PM

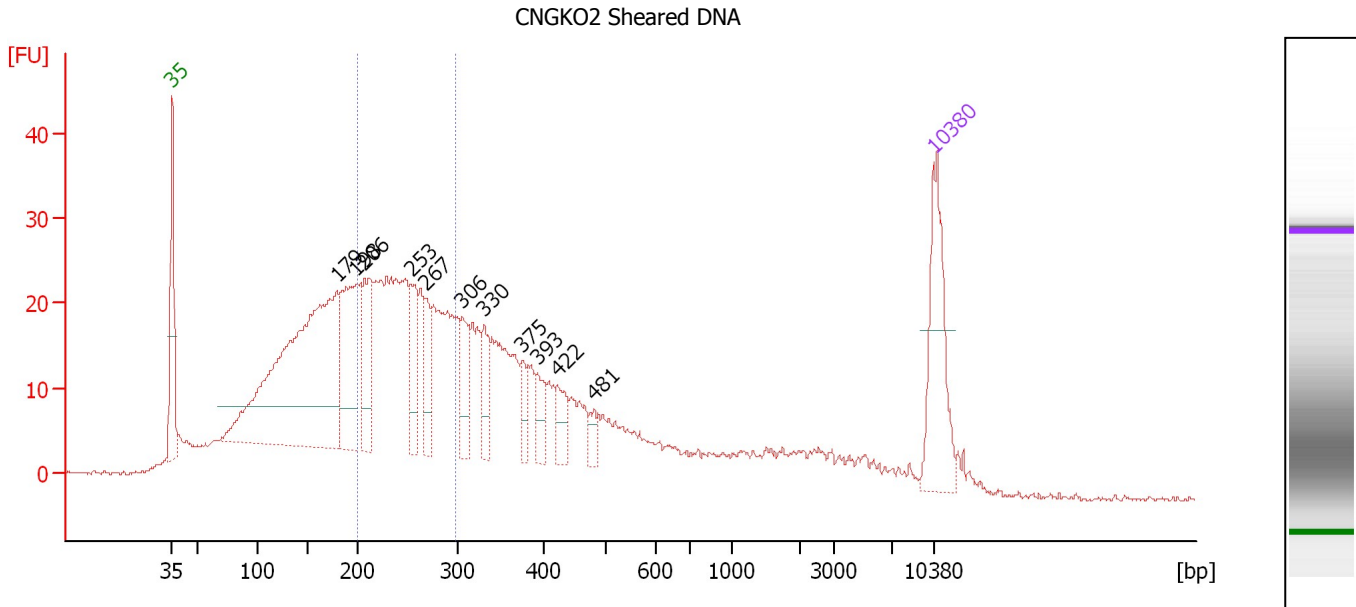
**Electropherogram Summary Continued ...****... Region table for sample 9 : CNGKO1 Sheared DNA**

<b>From [bp]</b>	<b>To [bp]</b>	<b>Average Size [bp]</b>	<b>Molarity [pmol/l]</b>	<b>Conc. [pg/μl]</b>	<b>Corr. Area</b>	<b>% of Total</b>	<b>Size distribution in CV [%]</b>	<b>Co lor</b>
200	309	253	6,506.5	1,080.93	478.1	31	12.3	■

Assay Class: High Sensitivity DNA Assay  
 Data Path: C:\...ents and Settings\Bioanalyzer\2012-06-29\2012-06-29\_002.xad

Created: 6/29/2012 4:08:13 PM  
 Modified: 6/29/2012 4:49:59 PM

**Electropherogram Summary Continued ...**



**Overall Results for sample 10 : CNGKO2 Sheared DNA**

Number of peaks found: 11      Corr. Area 1: 322.2  
 Noise: 0.3

**Peak table for sample 10 : CNGKO2 Sheared DNA**

Peak	Size [bp]	Conc. [pg/μl]	Molarity [pmol/l]	Observations
1	35	125.00	5,411.3	Lower Marker
2	179	481.72	4,084.7	
3	198	128.12	979.6	
4	206	79.89	587.1	
5	253	52.32	313.4	
6	267	40.13	227.8	
7	306	42.20	209.2	
8	330	34.99	160.5	
9	375	19.90	80.5	
10	393	26.55	102.5	
11	422	24.45	87.8	
12	481	11.75	37.0	
13	10,380	75.00	10.9	Upper Marker

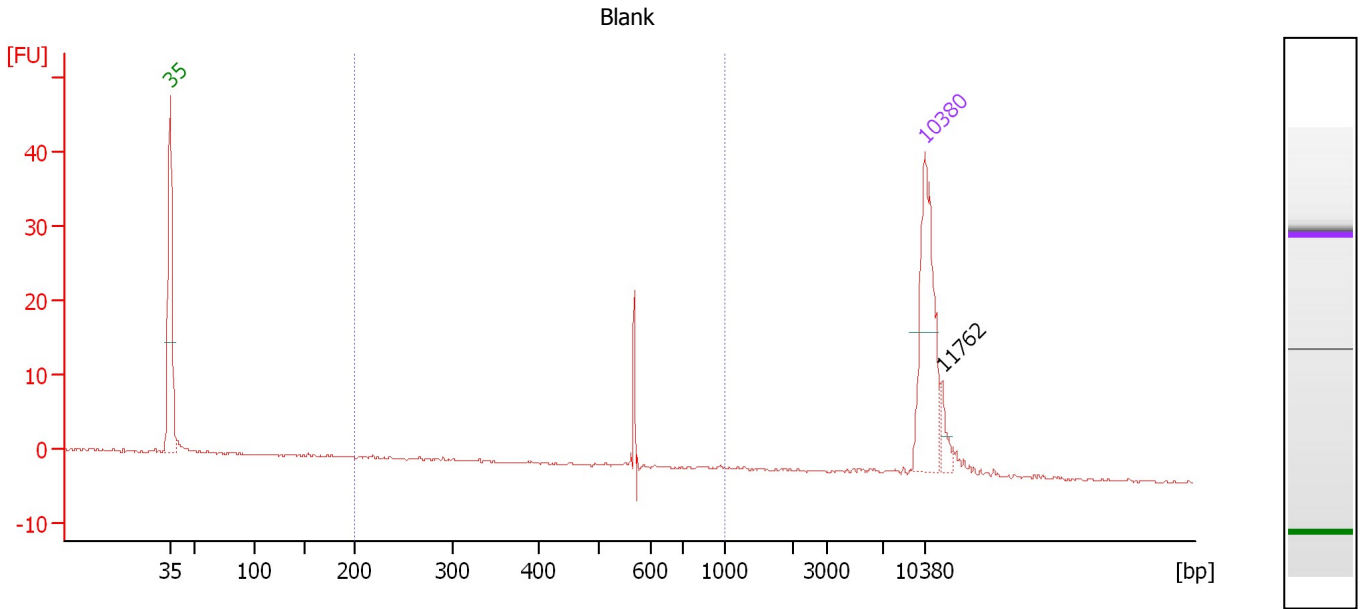
**Region table for sample 10 : CNGKO2 Sheared DNA**

From [bp]	To [bp]	Average Size [bp]	Molarity [pmol/l]	Conc. [pg/μl]	Corr. Area	% of Total	Size distribution in CV [%]	Color
200	299	247	4,501.8	733.65	322.2	29	11.4	Blue

Assay Class: High Sensitivity DNA Assay  
 Data Path: C:\...ents and Settings\Bioanalyzer\2012-06-29\2012-06-29\_002.xad

Created: 6/29/2012 4:08:13 PM  
 Modified: 6/29/2012 4:49:59 PM

**Electropherogram Summary Continued ...**



**Overall Results for sample 11 : Blank**

Number of peaks found: 1                      Corr. Area 1: 7.4  
 Noise: 0.1

**Peak table for sample 11 : Blank**

Peak	Size [bp]	Conc. [pg/μl]	Molarity [pmol/l]	Observations
1	35	125.00	5,411.3	Lower Marker
2	10,380	75.00	10.9	Upper Marker
3	11,762	0.00	0.0	

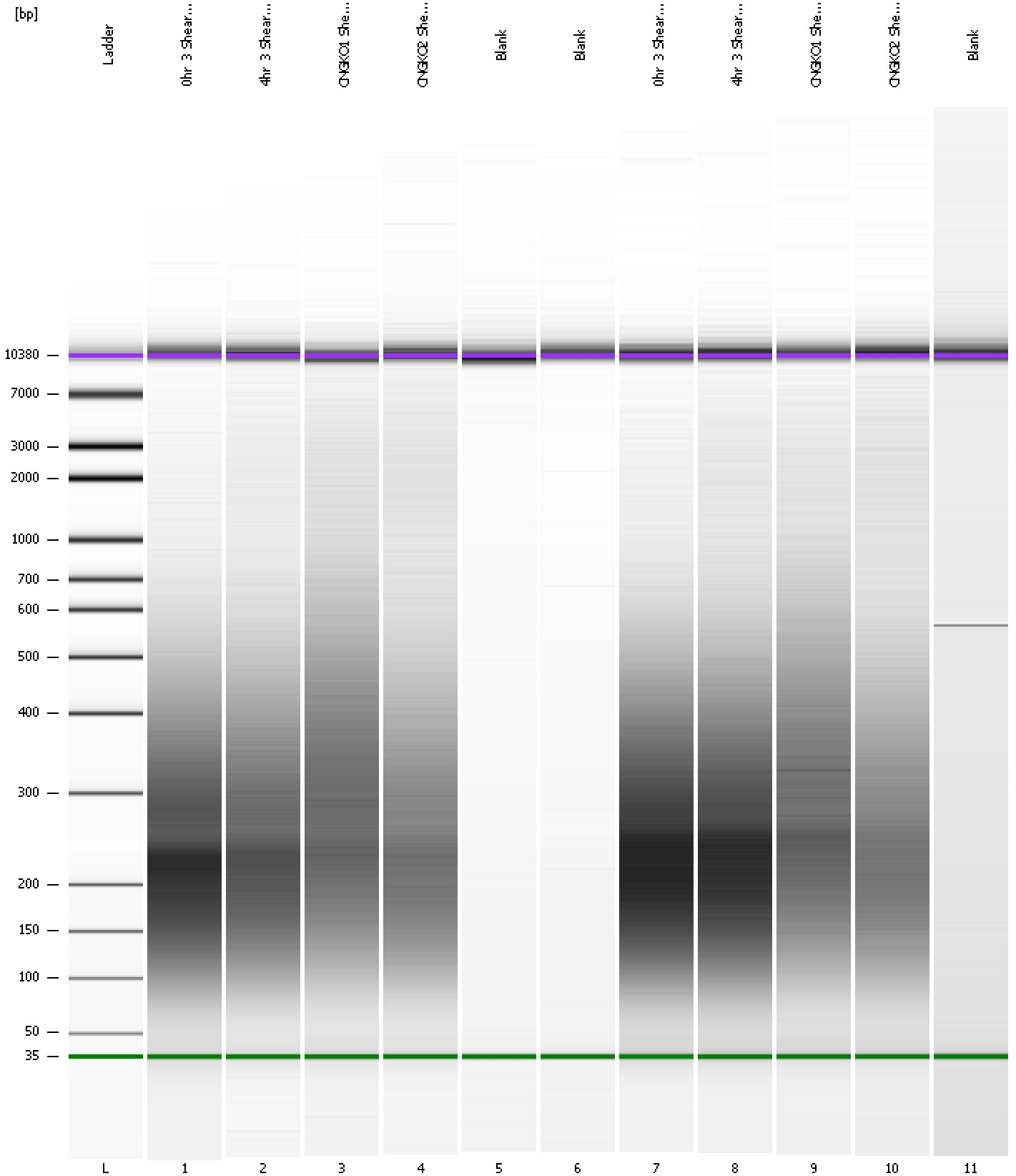
**Region table for sample 11 : Blank**

From [bp]	To [bp]	Average Size [bp]	Molarity [pmol/l]	Conc. [pg/μl]	Corr. Area	% of Total	Size distribution in CV [%]	Color
200	1,000	536	44.0	13.45	7.4	28	22.1	Blue

Assay Class: High Sensitivity DNA Assay  
Data Path: C:\...ents and Settings\Bioanalyzer\2012-06-29\2012-06-29\_002.xad

Created: 6/29/2012 4:08:13 PM  
Modified: 6/29/2012 4:49:59 PM

**Gel Image**



Assay Class: High Sensitivity DNA Assay  
 Data Path: C:\...ents and Settings\Bioanalyzer\2012-06-29\2012-06-29\_002.xad

Created: 6/29/2012 4:08:13 PM  
 Modified: 6/29/2012 4:49:59 PM

**Run Logbook**

Description	Number	Source	Category	Sub Category	Time	Time Zone	User	Host
Run ended on port 1 (Number of wells acquired: 12)		Instrument	Run		6/29/2012 4:49:32 PM	(GMT --07:00) Pacific Standard Time	UC Davis	D8XSMGH1
Run started on port 1 (File: C:\Documents and Settings\Bioanalyzer\2012-06-29\2012-06-29_002.xad)		Instrument	Run		6/29/2012 4:08:18 PM	(GMT --07:00) Pacific Standard Time	UC Davis	D8XSMGH1
Product Number : G2938B		Instrument	Run		6/29/2012 4:08:18 PM	(GMT --07:00) Pacific Standard Time	UC Davis	D8XSMGH1
Name :		Instrument	Run		6/29/2012 4:08:18 PM	(GMT --07:00) Pacific Standard Time	UC Davis	D8XSMGH1
Vendor : Agilent Technologies		Instrument	Run		6/29/2012 4:08:18 PM	(GMT --07:00) Pacific Standard Time	UC Davis	D8XSMGH1
Serial# : DE13701086		Instrument	Run		6/29/2012 4:08:18 PM	(GMT --07:00) Pacific Standard Time	UC Davis	D8XSMGH1
Firmware : C.01.069		Instrument	Run		6/29/2012 4:08:18 PM	(GMT --07:00) Pacific Standard Time	UC Davis	D8XSMGH1
Cartridge : Electrode		Instrument	Run		6/29/2012 4:08:18 PM	(GMT --07:00) Pacific Standard Time	UC Davis	D8XSMGH1