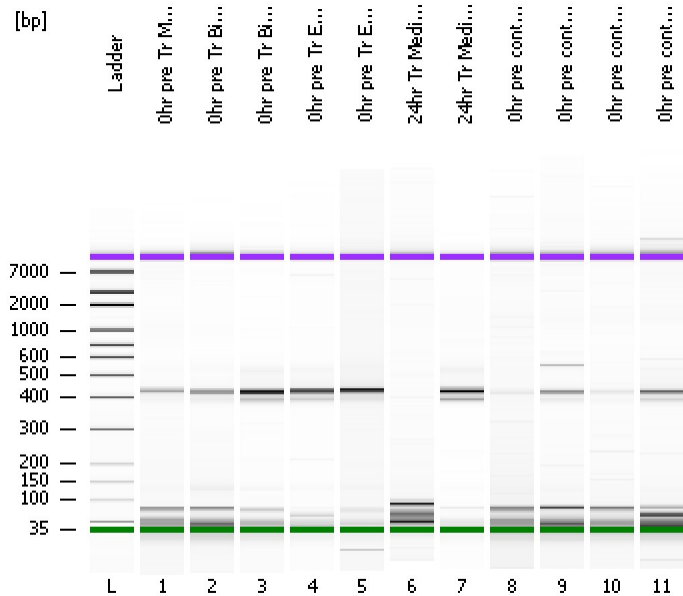


Assay Class: High Sensitivity DNA Assay  
 Data Path: C:\...ents and Settings\Bioanalyzer\2012-07-02\2012-07-02\_001.xad

Created: 7/2/2012 9:54:04 AM  
 Modified: 7/2/2012 10:39:30 AM

**Electrophoresis File Run Summary**



Instrument Information:

Instrument Name: DE13701086      Firmware: C.01.069  
 Serial#: DE13701086      Type: G2938B

Assay Information:

Assay Origin Path: C:\Program Files\Agilent\2100 bioanalyzer\2100 expert\assays\dsDNA\High Sensitivity DNA.xsy  
 Assay Class: High Sensitivity DNA Assay  
 Version: 1.03  
 Assay Comments: Copyright © 2003-2010 Agilent Technologies

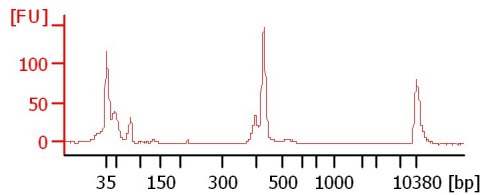
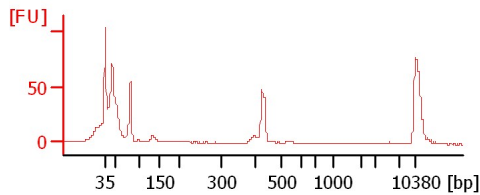
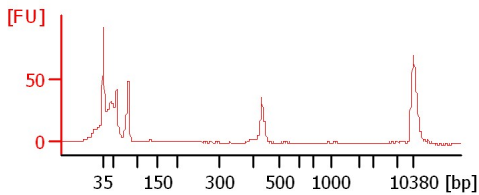
Chip Information:

Chip Lot #:   
 Reagent Kit Lot #:   
 Chip Comments:

**0hr pre Tr Media**

**0hr pre Tr Biofilm 1**

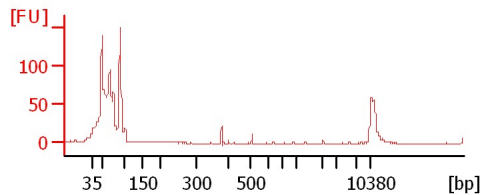
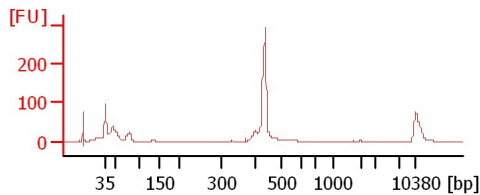
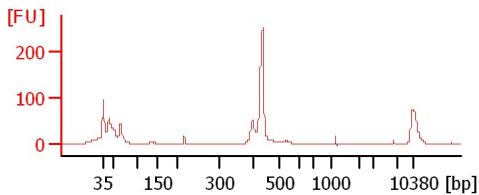
**0hr pre Tr Biofilm 2**



**0hr pre Tr Endo 1**

**0hr pre Tr Endo 2**

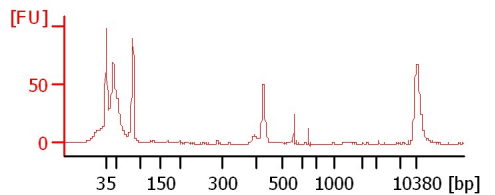
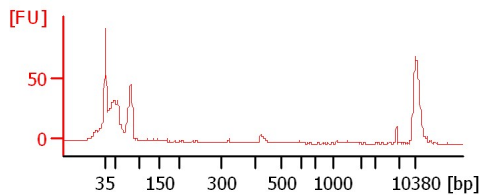
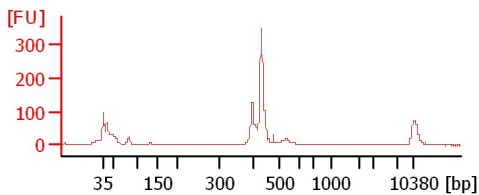
**24hr Tr Media 1**



**24hr Tr Media 2**

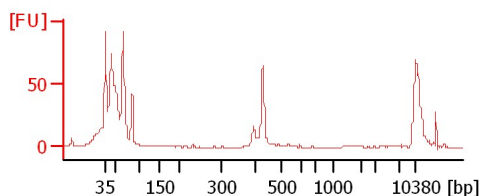
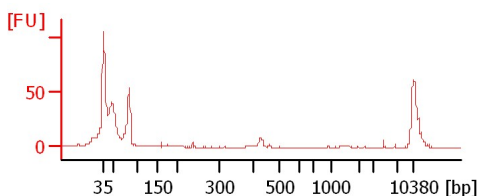
**0hr pre cont media**

**0hr pre cont biofilm 1**



**0hr pre cont biofilm 2**

**0hr pre cont Endo 1**



Assay Class: High Sensitivity DNA Assay  
Data Path: C:\...ents and Settings\Bioanalyzer\2012-07-02\2012-07-02\_001.xad

Created: 7/2/2012 9:54:04 AM  
Modified: 7/2/2012 10:39:30 AM

**Electrophoresis File Run Summary (Chip Summary)**

Sample Name	Sample Comment	Rest. Digest	Status	Observation	Result Label	Result Color
0hr pre Tr Media		<input type="checkbox"/>	✓			
0hr pre Tr Biofilm1		<input type="checkbox"/>	✓			
0hr pre Tr Biofilm 2		<input type="checkbox"/>	✓			
0hr pre Tr Endo 1		<input type="checkbox"/>	✓			
0hr pre Tr Endo 2		<input type="checkbox"/>	✓			
24hr Tr Media 1		<input type="checkbox"/>	✓			
24hr Tr Media 2		<input type="checkbox"/>	✓			
0hr pre cont media		<input type="checkbox"/>	✓			
0hr pre cont biofilm 1		<input type="checkbox"/>	✓			
0hr pre cont biofilm 2		<input type="checkbox"/>	✓			
0hr pre cont Endo 1		<input type="checkbox"/>	✓			
Ladder		<input type="checkbox"/>	✓			

**Chip Lot #**

**Reagent Kit Lot #**

**Chip Comments :**

Assay Class: High Sensitivity DNA Assay  
Data Path: C:\...ents and Settings\Bioanalyzer\2012-07-02\2012-07-02\_001.xad

Created: 7/2/2012 9:54:04 AM  
Modified: 7/2/2012 10:39:30 AM

**Electrophoresis Assay Details**

**General Analysis Settings**

Number of Available Sample and Ladder Wells (Max.) : 12  
Minimum Visible Range [s] : 32  
Maximum Visible Range [s] : 138  
Start Analysis Time Range [s] : 33  
End Analysis Time Range [s] : 137.5  
Ladder Concentration [pg/μl] : 1950  
Uses Standard Area for Ladder Fragments  
Lower Marker Concentration [pg/μl] : 125  
Upper Marker Concentration [pg/μl] : 75  
Used Upper Marker for Quantitation  
Standard Curve Fit is Point to Point  
Show Data Aligned to Lower and Upper Marker

**Integrator Settings**

Integration Start Time [s] : 33.05  
Integration End Time [s] : 137  
Slope Threshold : 0.8  
Height Threshold [FU] : 5  
Area Threshold : 0.1  
Width Threshold [s] : 0.6  
Baseline Plateau [s] : 0.5

**Filter Settings**

Filter Width [s] : 0.5  
Polynomial Order : 4

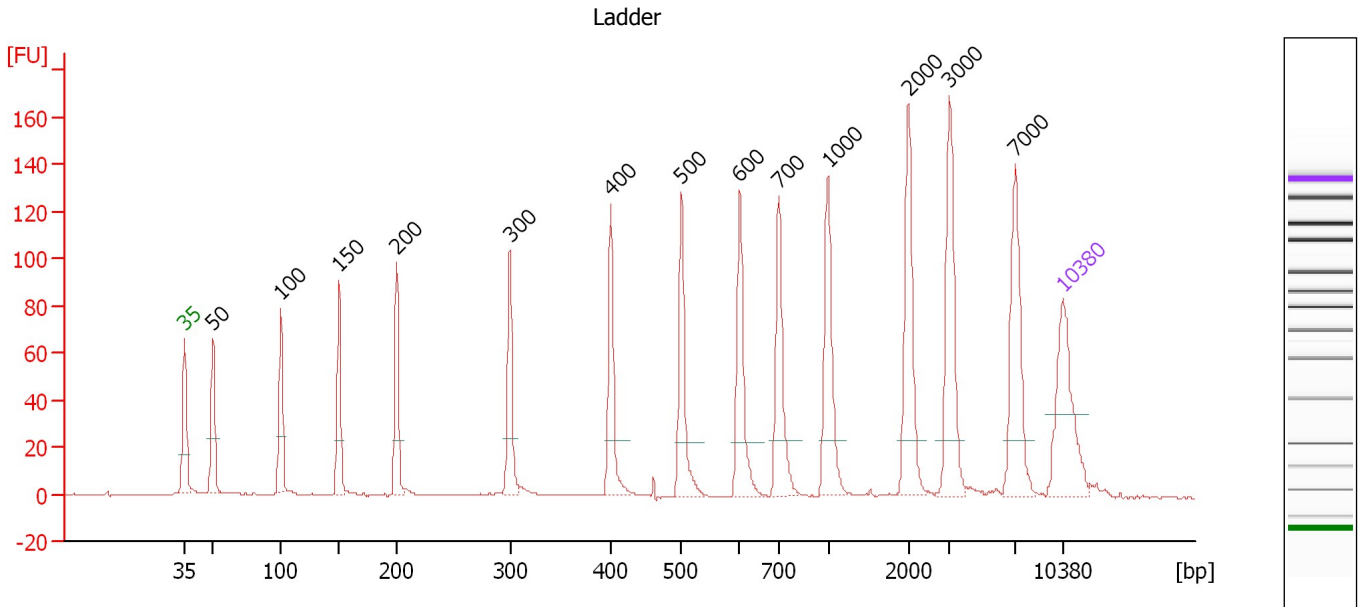
**Ladder**

Ladder Peak	Size	Area
1	35	160
2	50	210
3	100	208
4	150	221
5	200	242
6	300	270
7	400	305
8	500	306
9	600	336
10	700	321
11	1000	366
12	2000	413
13	3000	411
14	7000	400
15	10380	214

Assay Class: High Sensitivity DNA Assay  
 Data Path: C:\...ents and Settings\Bioanalyzer\2012-07-02\2012-07-02\_001.xad

Created: 7/2/2012 9:54:04 AM  
 Modified: 7/2/2012 10:39:30 AM

**Electropherogram Summary**



**Overall Results for Ladder**

Noise: 0.1

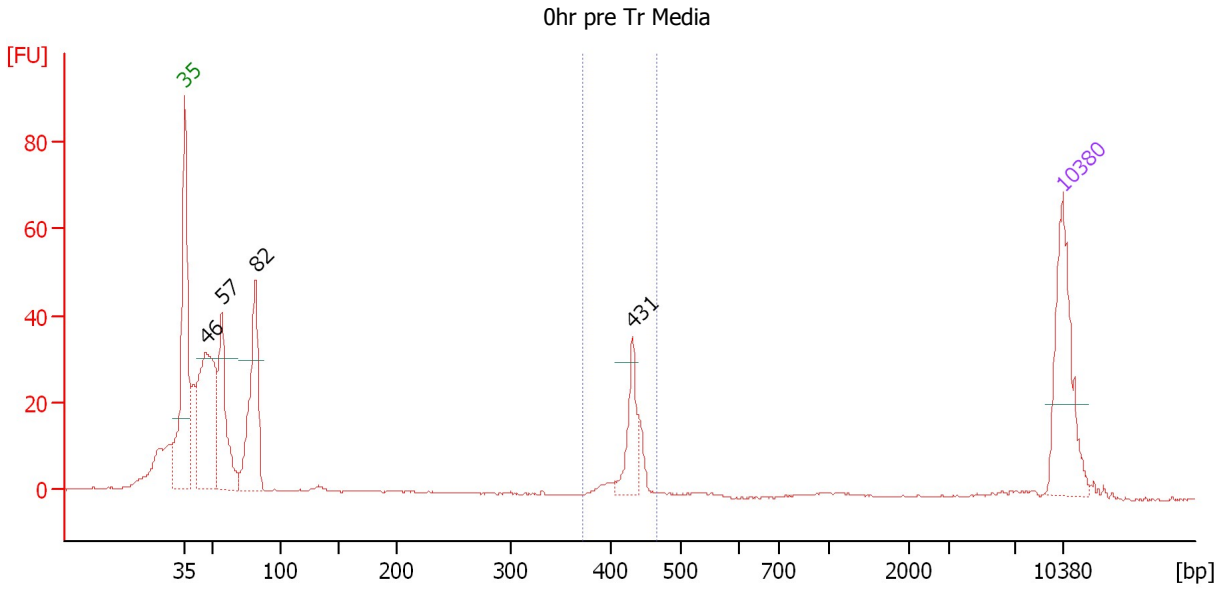
**Peak table for Ladder**

Peak	Size [bp]	Conc. [pg/μl]	Molarity [pmol/l]	Observations
1	35	125.00	5,411.3	Lower Marker
2	50	150.00	4,545.5	Ladder Peak
3	100	150.00	2,272.7	Ladder Peak
4	150	150.00	1,515.2	Ladder Peak
5	200	150.00	1,136.4	Ladder Peak
6	300	150.00	757.6	Ladder Peak
7	400	150.00	568.2	Ladder Peak
8	500	150.00	454.5	Ladder Peak
9	600	150.00	378.8	Ladder Peak
10	700	150.00	324.7	Ladder Peak
11	1,000	150.00	227.3	Ladder Peak
12	2,000	150.00	113.6	Ladder Peak
13	3,000	150.00	75.8	Ladder Peak
14	7,000	150.00	32.5	Ladder Peak
15	10,380	75.00	10.9	Upper Marker

Assay Class: High Sensitivity DNA Assay  
 Data Path: C:\...ents and Settings\Bioanalyzer\2012-07-02\2012-07-02\_001.xad

Created: 7/2/2012 9:54:04 AM  
 Modified: 7/2/2012 10:39:30 AM

**Electropherogram Summary Continued ...**



**Setpoint Deviations for sample 1 : 0hr pre Tr Media**

Height Threshold [FU] : 30

**Overall Results for sample 1 : 0hr pre Tr Media**

Number of peaks found: 4                      Corr. Area 1: 51.6  
 Noise: 0.2

**Peak table for sample 1 : 0hr pre Tr Media**

Peak	Size [bp]	Conc. [pg/µl]	Molarity [pmol/l]	Observations
1	35	125.00	5,411.3	Lower Marker
2	46	209.41	6,881.6	
3	57	115.26	3,082.9	
4	82	142.57	2,649.3	
5	431	43.02	151.3	
6	10,380	75.00	10.9	Upper Marker

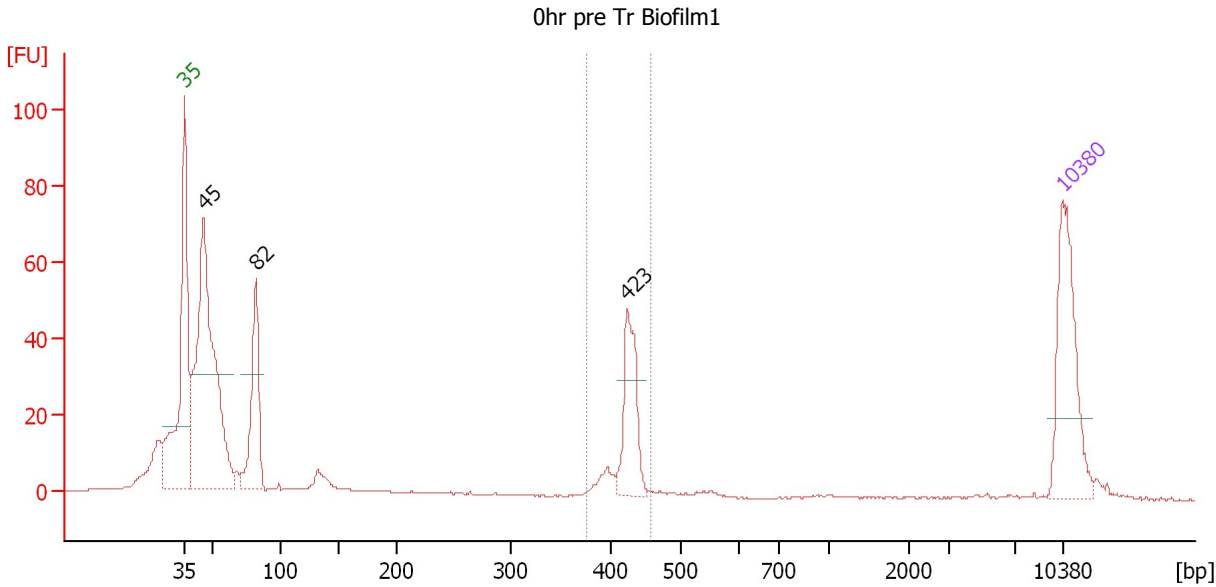
**Region table for sample 1 : 0hr pre Tr Media**

From [bp]	To [bp]	Average Size [bp]	Molarity [pmol/l]	Conc. [pg/µl]	Corr. Area	% of Total	Size distribution in CV [%]	Color
372	465	428	213.7	60.37	51.6	13	3.2	Blue

Assay Class: High Sensitivity DNA Assay  
 Data Path: C:\...ents and Settings\Bioanalyzer\2012-07-02\2012-07-02\_001.xad

Created: 7/2/2012 9:54:04 AM  
 Modified: 7/2/2012 10:39:30 AM

**Electropherogram Summary Continued ...**



**Setpoint Deviations for sample 2 : 0hr pre Tr Biofilm1**

Height Threshold [FU] : 30

**Overall Results for sample 2 : 0hr pre Tr Biofilm1**

Number of peaks found: 3                      Corr. Area 1: 90.0  
 Noise: 0.2

**Peak table for sample 2 : 0hr pre Tr Biofilm1**

Peak	Size [bp]	Conc. [pg/µl]	Molarity [pmol/l]	Observations
1	35	125.00	5,411.3	Lower Marker
2	45	363.69	12,225.4	
3	82	102.59	1,895.5	
4	423	68.16	244.2	
5	10,380	75.00	10.9	Upper Marker

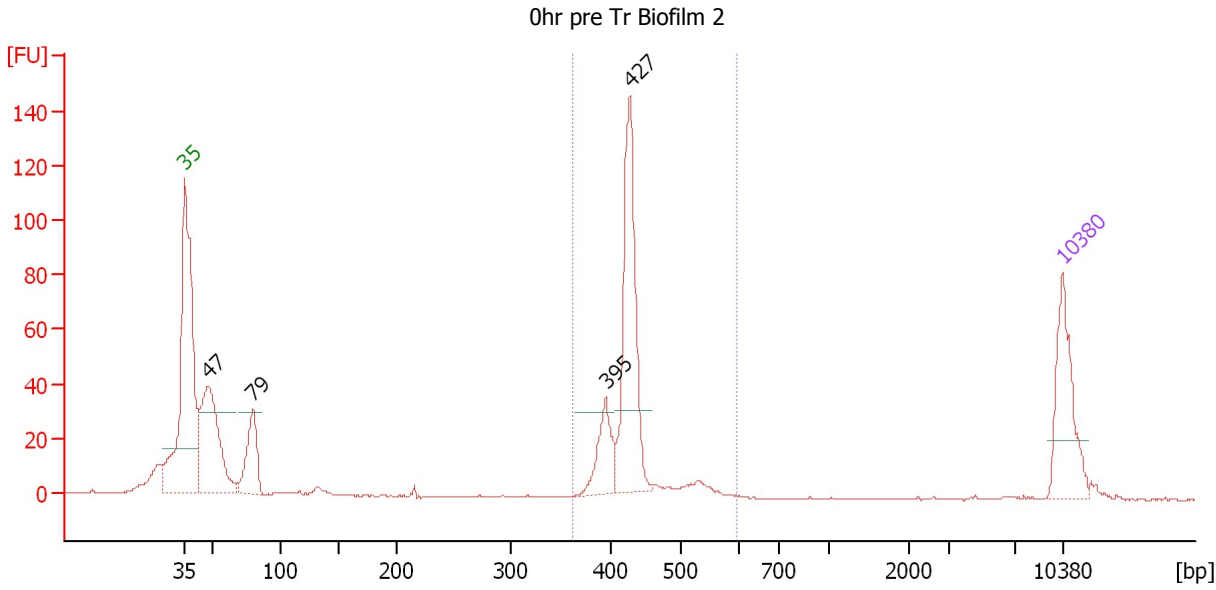
**Region table for sample 2 : 0hr pre Tr Biofilm1**

From [bp]	To [bp]	Average Size [bp]	Molarity [pmol/l]	Conc. [pg/µl]	Corr. Area	% of Total	Size distribution in CV [%]	Color
376	456	422	289.7	80.65	90.0	16	3.4	Blue

Assay Class: High Sensitivity DNA Assay  
 Data Path: C:\...ents and Settings\Bioanalyzer\2012-07-02\2012-07-02\_001.xad

Created: 7/2/2012 9:54:04 AM  
 Modified: 7/2/2012 10:39:30 AM

**Electropherogram Summary Continued ...**



**Setpoint Deviations for sample 3 : 0hr pre Tr Biofilm 2**

Height Threshold [FU] : 30

**Overall Results for sample 3 : 0hr pre Tr Biofilm 2**

Number of peaks found: 4                      Corr. Area 1: 309.4  
 Noise: 0.2

**Peak table for sample 3 : 0hr pre Tr Biofilm 2**

Peak	Size [bp]	Conc. [pg/μl]	Molarity [pmol/l]	Observations
1	35	125.00	5,411.3	Lower Marker
2	47	227.65	7,273.8	
3	79	90.55	1,726.1	
4	395	58.63	225.1	
5	427	209.12	741.9	
6	10,380	75.00	10.9	Upper Marker

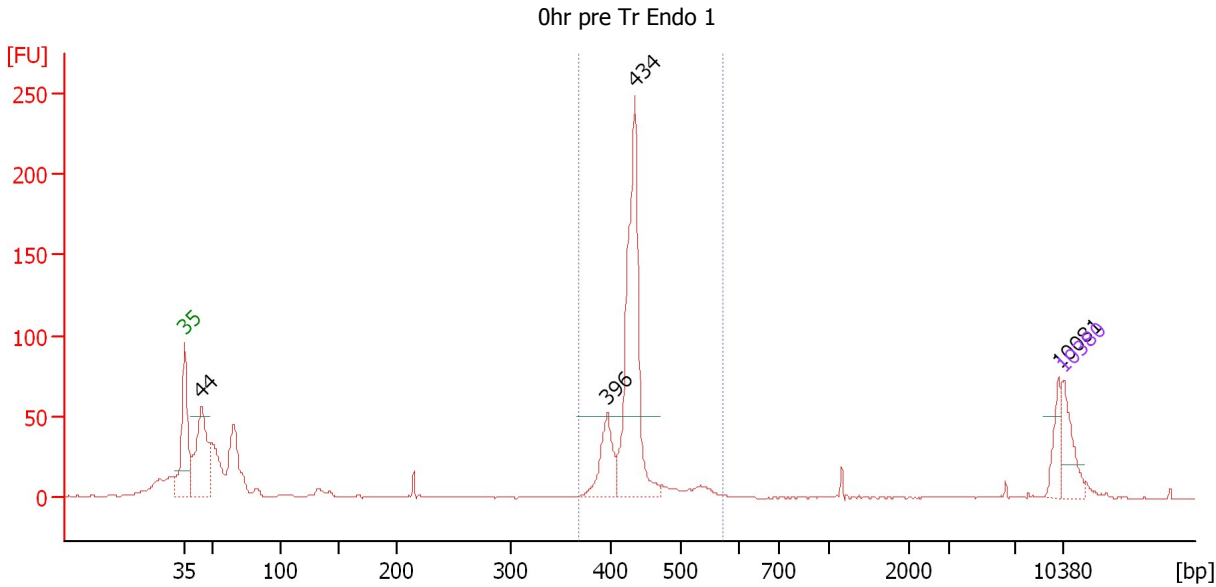
**Region table for sample 3 : 0hr pre Tr Biofilm 2**

From [bp]	To [bp]	Average Size [bp]	Molarity [pmol/l]	Conc. [pg/μl]	Corr. Area	% of Total	Size distribution in CV [%]	Color
363	595	428	1,087.8	305.35	309.4	52	7.7	Blue

Assay Class: High Sensitivity DNA Assay  
 Data Path: C:\...ents and Settings\Bioanalyzer\2012-07-02\2012-07-02\_001.xad

Created: 7/2/2012 9:54:04 AM  
 Modified: 7/2/2012 10:39:30 AM

**Electropherogram Summary Continued ...**



**Setpoint Deviations for sample 4 : 0hr pre Tr Endo 1**

Height Threshold [FU] : 50

**Overall Results for sample 4 : 0hr pre Tr Endo 1**

Number of peaks found: 4                      Corr. Area 1: 463.6  
 Noise: 0.2

**Peak table for sample 4 : 0hr pre Tr Endo 1**

Peak	Size [bp]	Conc. [pg/μl]	Molarity [pmol/l]	Observations
1	35	125.00	5,411.3	Lower Marker
2	44	321.70	11,113.4	
3	396	130.11	497.7	
4	434	545.87	1,905.9	
5	10,081	50.79	7.6	
6	10,380	75.00	10.9	Upper Marker

**Region table for sample 4 : 0hr pre Tr Endo 1**

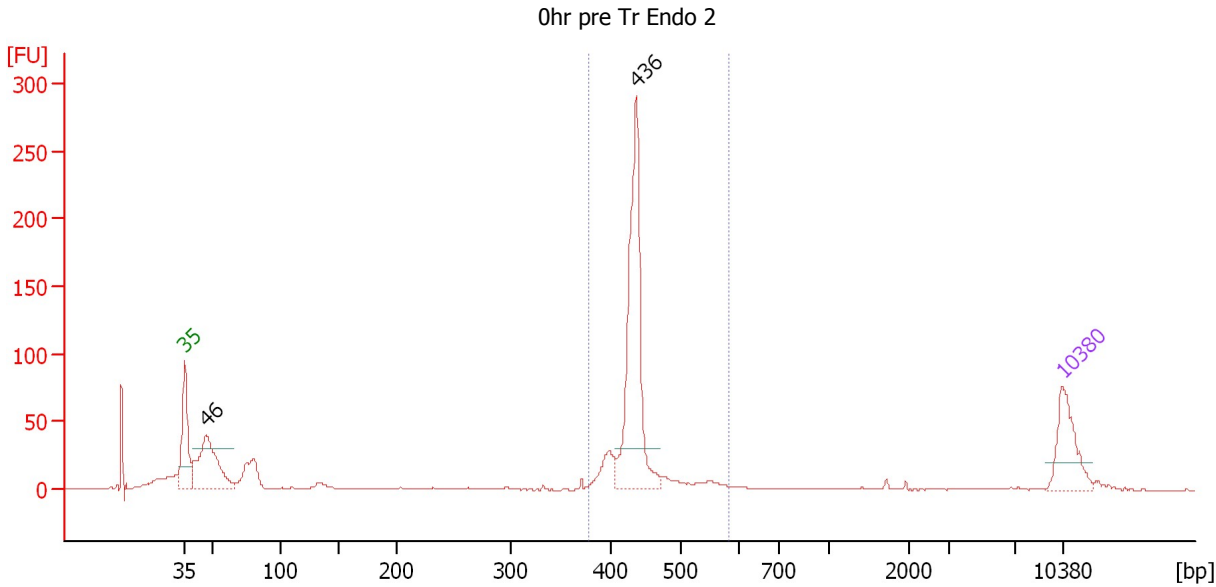
From [bp]	To [bp]	Average Size [bp]	Molarity [pmol/l]	Conc. [pg/μl]	Corr. Area	% of Total	Size distribution in CV [%]	Color
368	570	431	2,608.9	737.92	463.6	48	7.0	Blue



Assay Class: High Sensitivity DNA Assay  
 Data Path: C:\...ents and Settings\Bioanalyzer\2012-07-02\2012-07-02\_001.xad

Created: 7/2/2012 9:54:04 AM  
 Modified: 7/2/2012 10:39:30 AM

**Electropherogram Summary Continued ...**



**Setpoint Deviations for sample 5 : 0hr pre Tr Endo 2**

Height Threshold [FU] : 30

**Overall Results for sample 5 : 0hr pre Tr Endo 2**

Number of peaks found: 2                      Corr. Area 1: 498.4  
 Noise: 0.2

**Peak table for sample 5 : 0hr pre Tr Endo 2**

Peak	Size [bp]	Conc. [pg/μl]	Molarity [pmol/l]	Observations
1	35	125.00	5,411.3	Lower Marker
2	46	229.98	7,526.8	
3	436	375.42	1,305.9	
4	10,380	75.00	10.9	Upper Marker

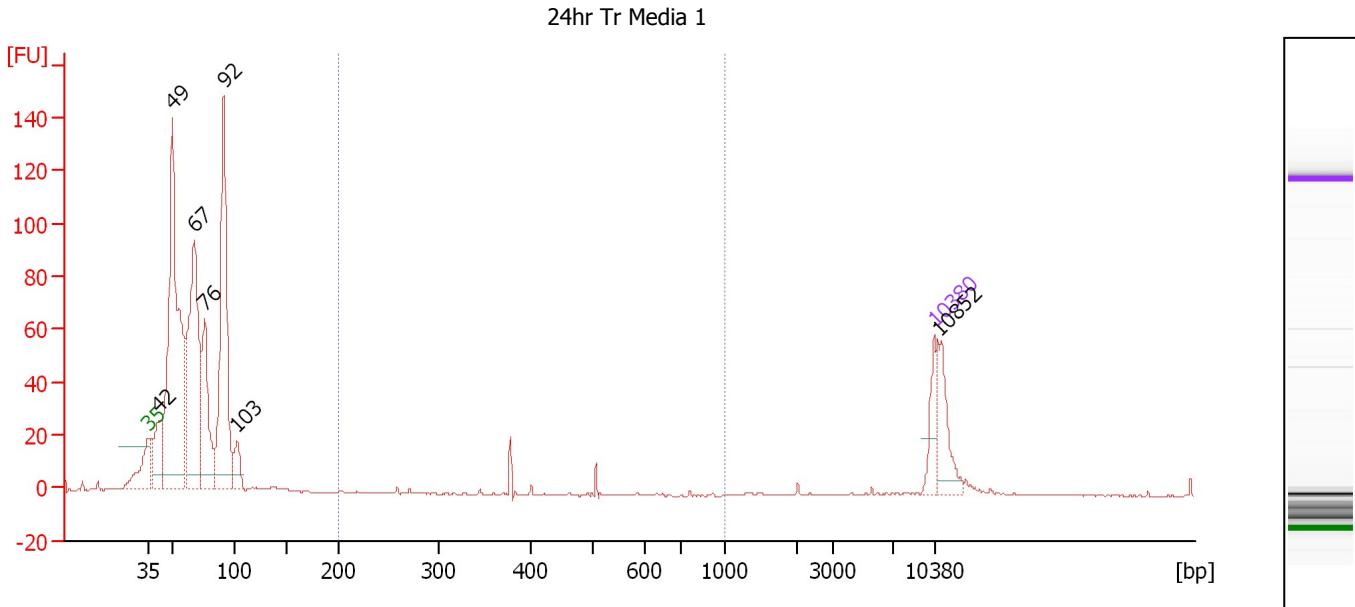
**Region table for sample 5 : 0hr pre Tr Endo 2**

From [bp]	To [bp]	Average Size [bp]	Molarity [pmol/l]	Conc. [pg/μl]	Corr. Area	% of Total	Size distribution in CV [%]	Color
379	582	437	1,621.4	465.02	498.4	55	6.9	Blue

Assay Class: High Sensitivity DNA Assay  
 Data Path: C:\...ents and Settings\Bioanalyzer\2012-07-02\2012-07-02\_001.xad

Created: 7/2/2012 9:54:04 AM  
 Modified: 7/2/2012 10:39:30 AM

**Electropherogram Summary Continued ...**



**Overall Results for sample 6 : 24hr Tr Media 1**

Number of peaks found: 7                      Corr. Area 1: 9.8  
 Noise: 0.2

**Peak table for sample 6 : 24hr Tr Media 1**

Peak	Size [bp]	Conc. [pg/μl]	Molarity [pmol/l]	Observations
1	35	125.00	5,411.3	Lower Marker
2	42	199.05	7,238.0	
3	49	1,363.25	41,909.3	
4	67	893.70	20,078.0	
5	76	383.76	7,673.2	
6	92	846.26	14,002.0	
7	103	90.42	1,330.7	
8	10,380	75.00	10.9	Upper Marker
9	10,852	0.00	0.0	

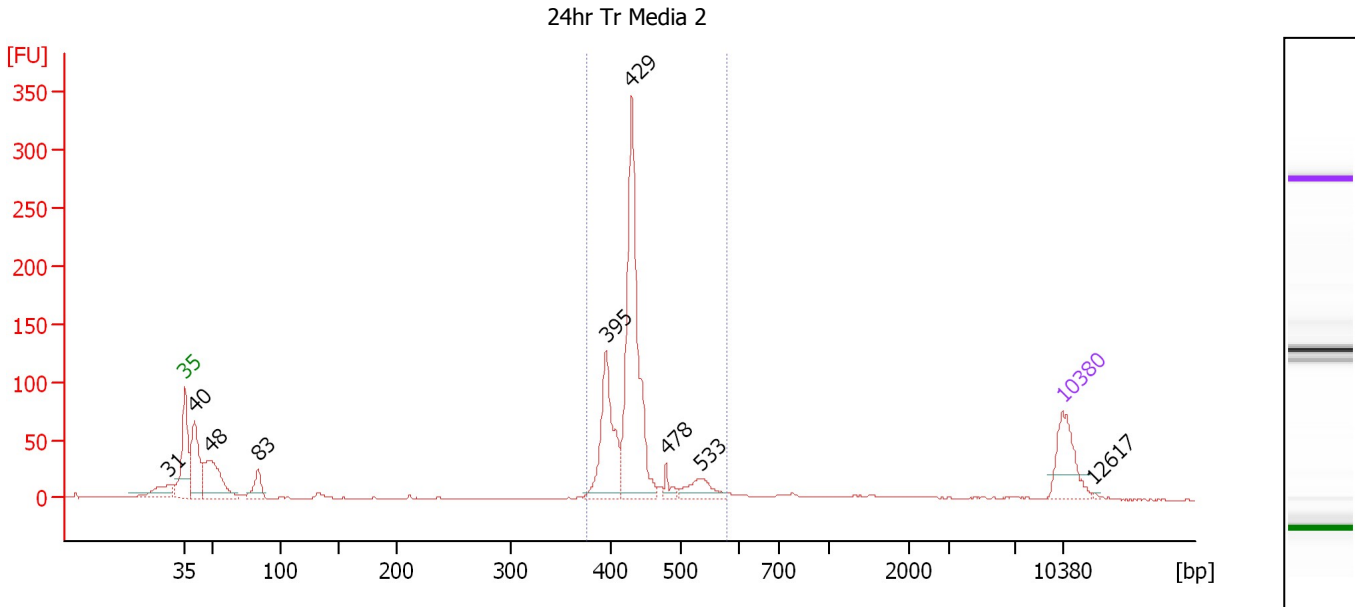
**Region table for sample 6 : 24hr Tr Media 1**

From [bp]	To [bp]	Average Size [bp]	Molarity [pmol/l]	Conc. [pg/μl]	Corr. Area	% of Total	Size distribution in CV [%]	Color
200	1,000	414	100.2	26.01	9.8	1	19.2	Blue

Assay Class: High Sensitivity DNA Assay  
 Data Path: C:\...ents and Settings\Bioanalyzer\2012-07-02\2012-07-02\_001.xad

Created: 7/2/2012 9:54:04 AM  
 Modified: 7/2/2012 10:39:30 AM

**Electropherogram Summary Continued ...**



**Overall Results for sample 7 : 24hr Tr Media 2**

Number of peaks found: 9                      Corr. Area 1: 720.2  
 Noise: 0.2

**Peak table for sample 7 : 24hr Tr Media 2**

Peak	Size [bp]	Conc. [pg/μl]	Molarity [pmol/l]	Observations
1	31	0.00	0.0	
2	35	125.00	5,411.3	Lower Marker
3	40	164.87	6,199.4	
4	48	169.44	5,322.3	
5	83	49.88	907.9	
6	395	187.88	720.5	
7	429	426.10	1,504.9	
8	478	17.95	56.9	
9	533	44.08	125.2	
10	10,380	75.00	10.9	Upper Marker
11	12,617	0.00	0.0	

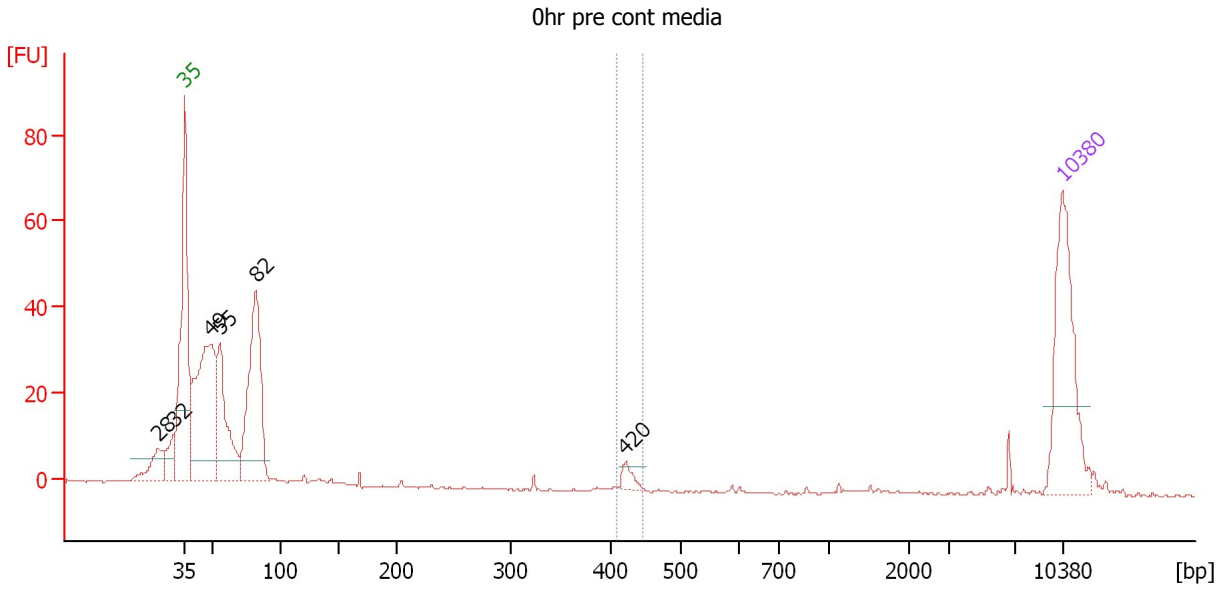
**Region table for sample 7 : 24hr Tr Media 2**

From [bp]	To [bp]	Average Size [bp]	Molarity [pmol/l]	Conc. [pg/μl]	Corr. Area	% of Total	Size distribution in CV [%]	Color
375	576	432	2,428.0	687.67	720.2	62	8.4	Blue

Assay Class: High Sensitivity DNA Assay  
 Data Path: C:\...ents and Settings\Bioanalyzer\2012-07-02\2012-07-02\_001.xad

Created: 7/2/2012 9:54:04 AM  
 Modified: 7/2/2012 10:39:30 AM

**Electropherogram Summary Continued ...**



**Overall Results for sample 8 : 0hr pre cont media**

Number of peaks found: 6                      Corr. Area 1: 8.1  
 Noise: 0.2

**Peak table for sample 8 : 0hr pre cont media**

Peak	Size [bp]	Conc. [pg/μl]	Molarity [pmol/l]	Observations
1	28	0.00	0.0	
2	32	0.00	0.0	
3	35	125.00	5,411.3	Lower Marker
4	49	189.57	5,869.2	
5	55	94.79	2,591.9	
6	82	154.10	2,862.9	
7	420	8.01	28.9	
8	10,380	75.00	10.9	Upper Marker

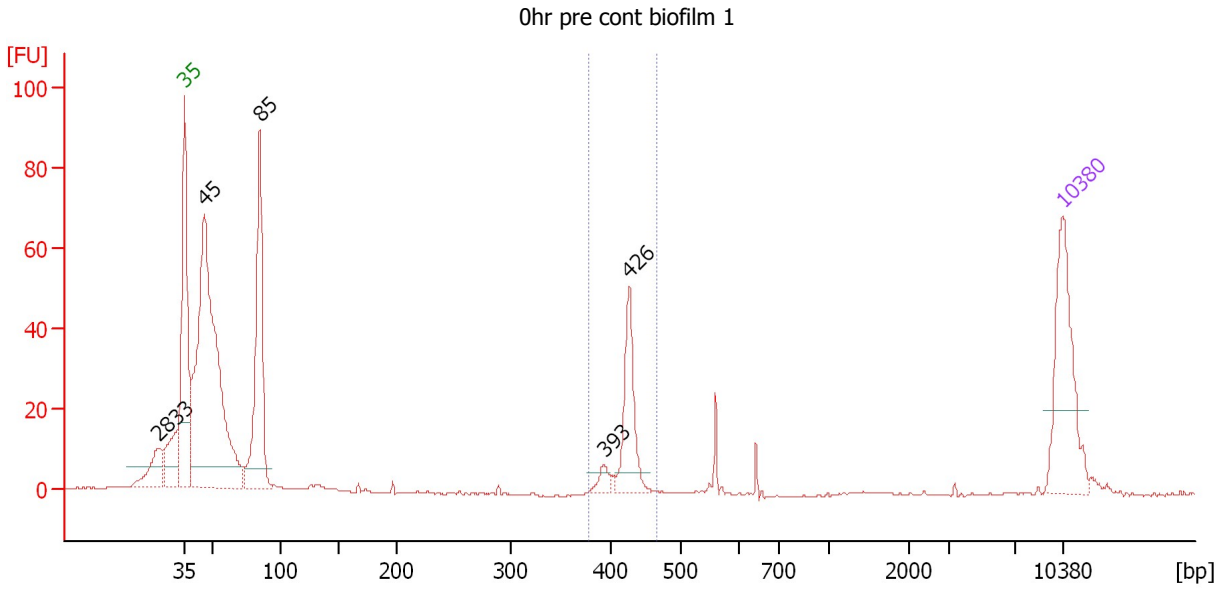
**Region table for sample 8 : 0hr pre cont media**

From [bp]	To [bp]	Average Size [bp]	Molarity [pmol/l]	Conc. [pg/μl]	Corr. Area	% of Total	Size distribution in CV [%]	Color
409	445	424	28.6	8.01	8.1	2	1.8	Blue

Assay Class: High Sensitivity DNA Assay  
 Data Path: C:\...ents and Settings\Bioanalyzer\2012-07-02\2012-07-02\_001.xad

Created: 7/2/2012 9:54:04 AM  
 Modified: 7/2/2012 10:39:30 AM

**Electropherogram Summary Continued ...**



**Overall Results for sample 9 : 0hr pre cont biofilm 1**

Number of peaks found: 6                      Corr. Area 1: 68.9  
 Noise: 0.2

**Peak table for sample 9 : 0hr pre cont biofilm 1**

Peak	Size [bp]	Conc. [pg/μl]	Molarity [pmol/l]	Observations
1	28	0.00	0.0	
2	33	0.00	0.0	
3	35	125.00	5,411.3	Lower Marker
4	45	462.11	15,435.1	
5	85	186.03	3,327.6	
6	393	9.84	37.9	
7	426	64.49	229.6	
8	10,380	75.00	10.9	Upper Marker

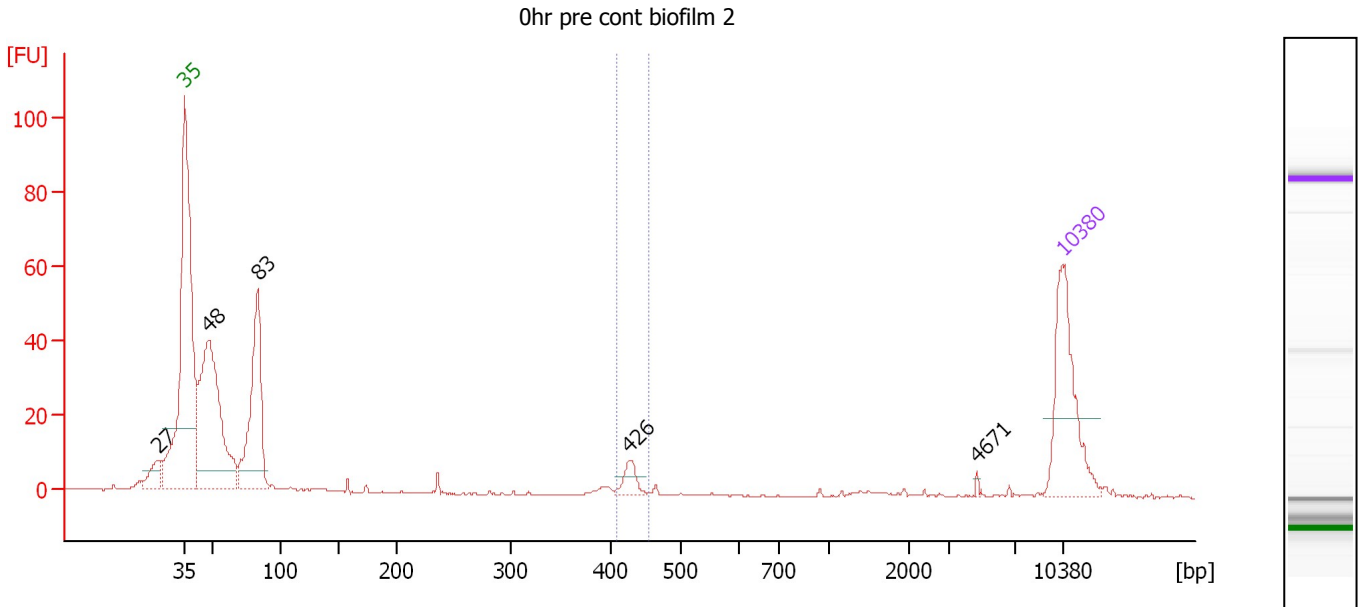
**Region table for sample 9 : 0hr pre cont biofilm 1**

From [bp]	To [bp]	Average Size [bp]	Molarity [pmol/l]	Conc. [pg/μl]	Corr. Area	% of Total	Size distribution in CV [%]	Color
379	463	421	271.1	75.32	68.9	12	3.2	Blue

Assay Class: High Sensitivity DNA Assay  
 Data Path: C:\...ents and Settings\Bioanalyzer\2012-07-02\2012-07-02\_001.xad

Created: 7/2/2012 9:54:04 AM  
 Modified: 7/2/2012 10:39:30 AM

**Electropherogram Summary Continued ...**



**Overall Results for sample 10 : 0hr pre cont biofilm 2**

Number of peaks found: 5                      Corr. Area 1: 13.0  
 Noise: 0.1

**Peak table for sample 10 : 0hr pre cont biofilm 2**

Peak	Size [bp]	Conc. [pg/μl]	Molarity [pmol/l]	Observations
1	27	0.00	0.0	
2	35	125.00	5,411.3	Lower Marker
3	48	266.41	8,440.8	
4	83	169.21	3,075.6	
5	426	14.87	52.9	
6	4,671	1.39	0.5	
7	10,380	75.00	10.9	Upper Marker

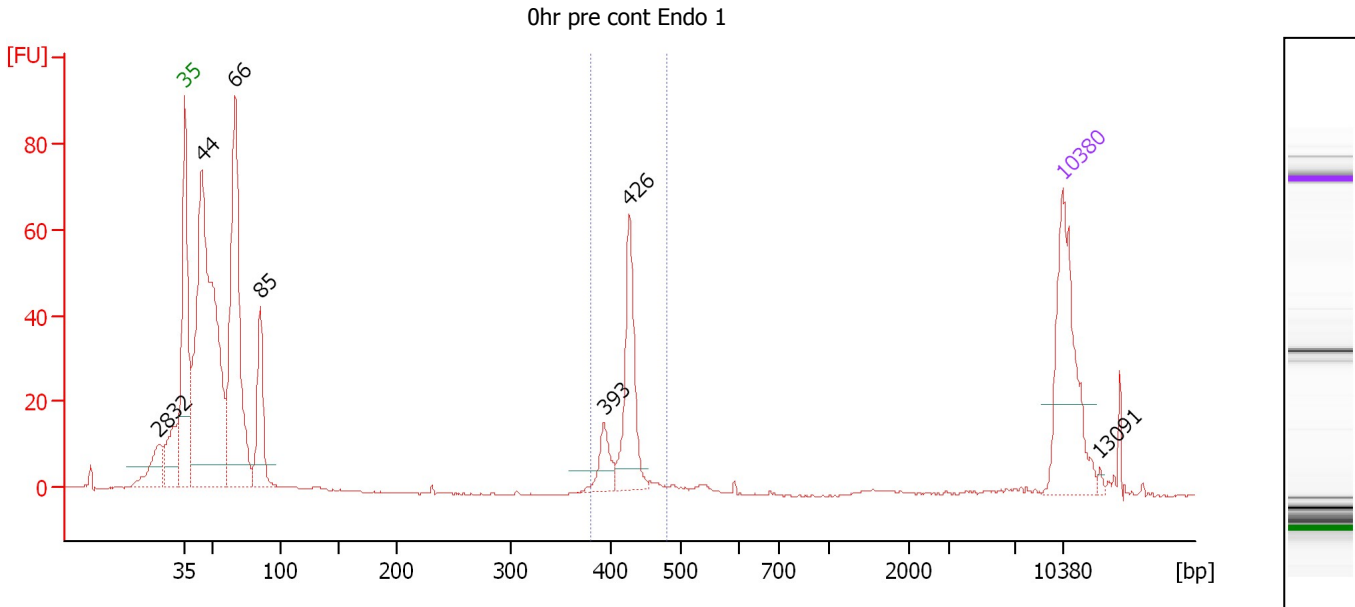
**Region table for sample 10 : 0hr pre cont biofilm 2**

From [bp]	To [bp]	Average Size [bp]	Molarity [pmol/l]	Conc. [pg/μl]	Corr. Area	% of Total	Size distribution in CV [%]	Color
409	453	427	49.5	13.95	13.0	4	1.9	Blue

Assay Class: High Sensitivity DNA Assay  
 Data Path: C:\...ents and Settings\Bioanalyzer\2012-07-02\2012-07-02\_001.xad

Created: 7/2/2012 9:54:04 AM  
 Modified: 7/2/2012 10:39:30 AM

**Electropherogram Summary Continued ...**



**Overall Results for sample 11 : 0hr pre cont Endo 1**

Number of peaks found: 8                      Corr. Area 1: 99.5  
 Noise: 0.2

**Peak table for sample 11 : 0hr pre cont Endo 1**

Peak	Size [bp]	Conc. [pg/μl]	Molarity [pmol/l]	Observations
1	28	0.00	0.0	
2	32	0.00	0.0	
3	35	125.00	5,411.3	Lower Marker
4	44	411.09	14,099.7	
5	66	238.73	5,449.6	
6	85	68.04	1,210.6	
7	393	22.20	85.6	
8	426	72.25	256.9	
9	10,380	75.00	10.9	Upper Marker
10	13,091	0.00	0.0	

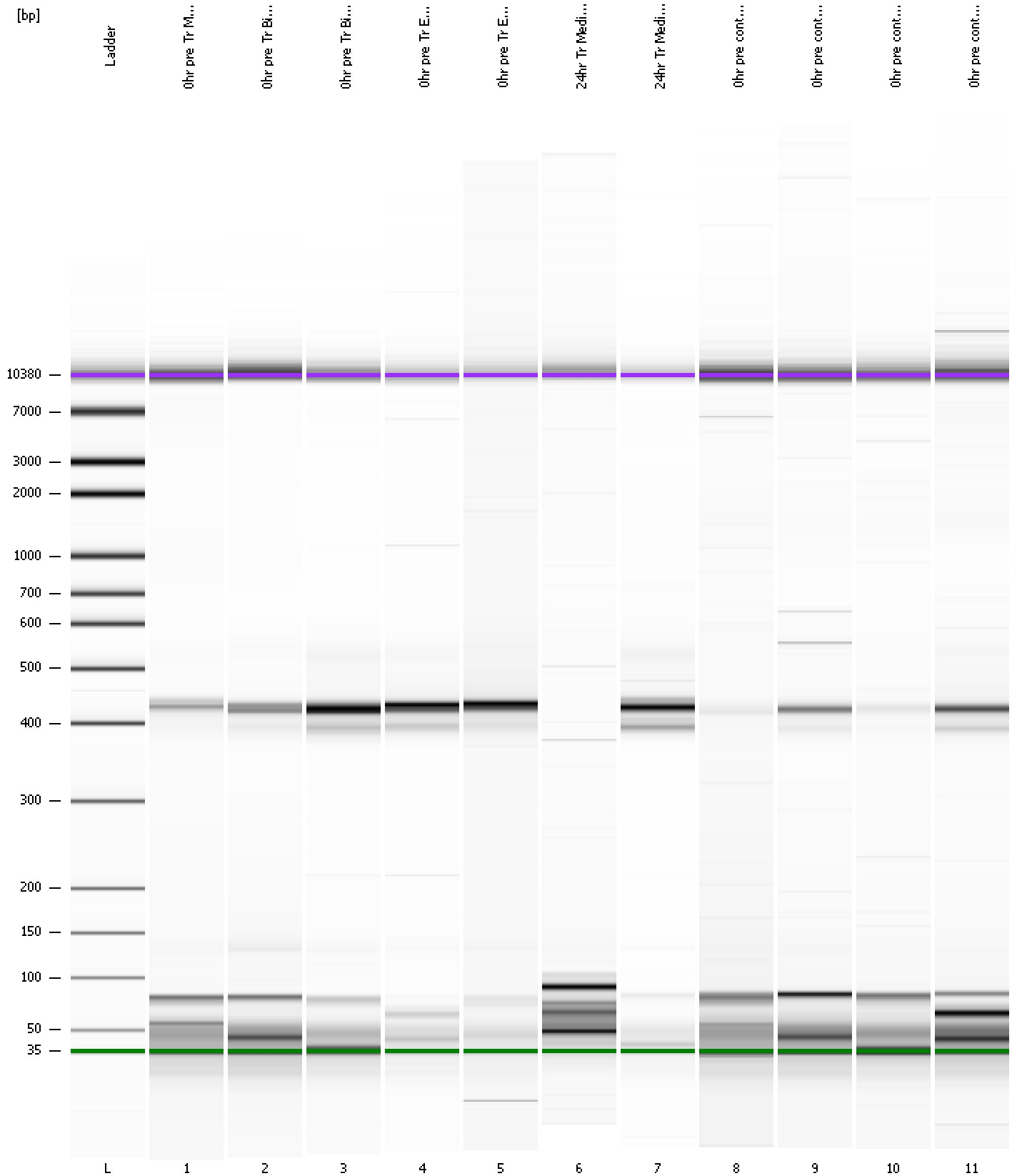
**Region table for sample 11 : 0hr pre cont Endo 1**

From [bp]	To [bp]	Average Size [bp]	Molarity [pmol/l]	Conc. [pg/μl]	Corr. Area	% of Total	Size distribution in CV [%]	Color
381	479	421	354.4	98.32	99.5	14	4.1	Blue

Assay Class: High Sensitivity DNA Assay  
Data Path: C:\...ents and Settings\Bioanalyzer\2012-07-02\2012-07-02\_001.xad

Created: 7/2/2012 9:54:04 AM  
Modified: 7/2/2012 10:39:30 AM

**Gel Image**





Assay Class: High Sensitivity DNA Assay  
 Data Path: C:\...ents and Settings\Bioanalyzer\2012-07-02\2012-07-02\_001.xad

Created: 7/2/2012 9:54:04 AM  
 Modified: 7/2/2012 10:39:30 AM

**Run Logbook**

Description	Number	Source	Category	Sub Category	Time	Time Zone	User	Host
Run ended on port 1 (Number of wells acquired: 12)		Instrument	Run		7/2/2012 10:35:23 AM	(GMT --07:00) Pacific Standard Time	UC Davis	D8XSMGH1
Run started on port 1 (File: C:\Documents and Settings\Bioanalyzer\2012-07-02\2012-07-02_001.xad)		Instrument	Run		7/2/2012 9:54:09 AM	(GMT --07:00) Pacific Standard Time	UC Davis	D8XSMGH1
Product Number : G2938B		Instrument	Run		7/2/2012 9:54:09 AM	(GMT --07:00) Pacific Standard Time	UC Davis	D8XSMGH1
Name :		Instrument	Run		7/2/2012 9:54:09 AM	(GMT --07:00) Pacific Standard Time	UC Davis	D8XSMGH1
Vendor : Agilent Technologies		Instrument	Run		7/2/2012 9:54:09 AM	(GMT --07:00) Pacific Standard Time	UC Davis	D8XSMGH1
Serial# : DE13701086		Instrument	Run		7/2/2012 9:54:09 AM	(GMT --07:00) Pacific Standard Time	UC Davis	D8XSMGH1
Firmware : C.01.069		Instrument	Run		7/2/2012 9:54:09 AM	(GMT --07:00) Pacific Standard Time	UC Davis	D8XSMGH1
Cartridge : Electrode		Instrument	Run		7/2/2012 9:54:09 AM	(GMT --07:00) Pacific Standard Time	UC Davis	D8XSMGH1