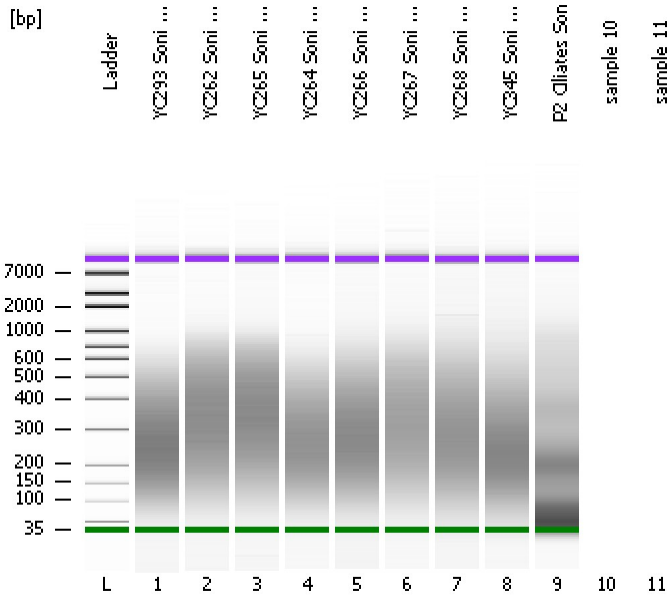


Assay Class: High Sensitivity DNA Assay
Data Path: C:\...ents and Settings\Bioanalyzer\2012-07-02\2012-07-02_002.xad

Created: 7/2/2012 11:20:47 AM
Modified: 7/2/2012 11:57:25 AM

Electrophoresis File Run Summary



Instrument Information:

Instrument Name: DE13701086 Firmware: C.01.069
Serial#: DE13701086 Type: G2938B

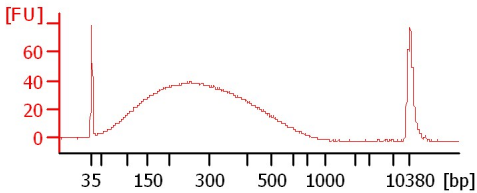
Assay Information:

Assay Origin Path: C:\Program Files\Agilent\2100 bioanalyzer\2100 expert\assays\dsDNA\High Sensitivity DNA.xsy
Assay Class: High Sensitivity DNA Assay
Version: 1.03
Assay Comments: Copyright © 2003-2010 Agilent Technologies

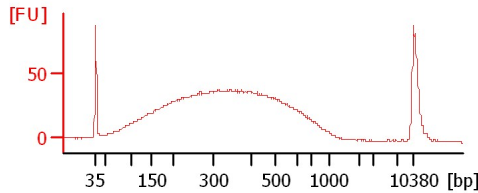
Chip Information:

Chip Lot #:
Reagent Kit Lot #:
Chip Comments:

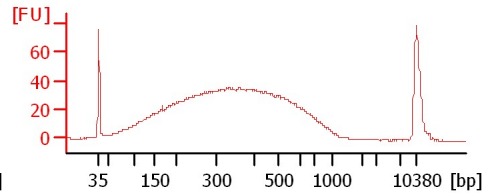
YC293 Soni 1:10



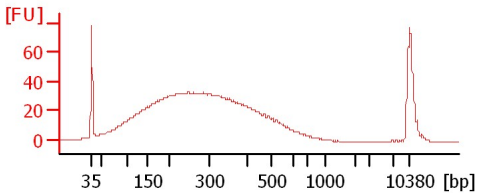
YC262 Soni 1:10



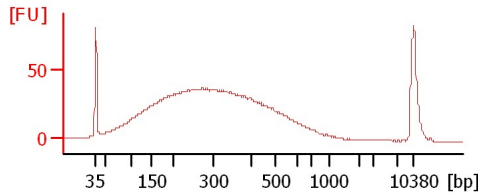
YC265 Soni 1:10



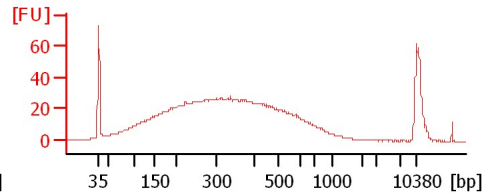
YC264 Soni 1:15



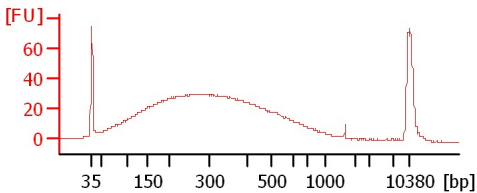
YC266 Soni 1:15



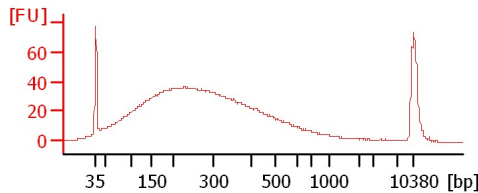
YC267 Soni 1:17



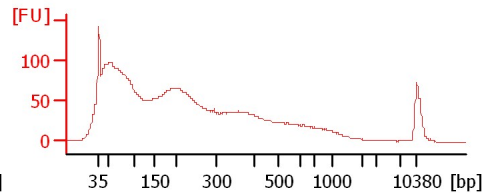
YC268 Soni 1:20



YC345 Soni 1:20



P2 Ciliates Son



Assay Class: High Sensitivity DNA Assay
 Data Path: C:\...ents and Settings\Bioanalyzer\2012-07-02\2012-07-02_002.xad

Created: 7/2/2012 11:20:47 AM
 Modified: 7/2/2012 11:57:25 AM

Electrophoresis File Run Summary (Chip Summary)

Sample Name	Sample Comment	Rest. Digest	Status	Observation	Result Label	Result Color
YC293 Soni 1:10		<input type="checkbox"/>	✓			
YC262 Soni 1:10		<input type="checkbox"/>	✓			
YC265 Soni 1:10		<input type="checkbox"/>	✓			
YC264 Soni 1:15		<input type="checkbox"/>	✓			
YC266 Soni 1:15		<input type="checkbox"/>	✓			
YC267 Soni 1:17		<input type="checkbox"/>	✓			
YC268 Soni 1:20		<input type="checkbox"/>	✓			
YC345 Soni 1:20		<input type="checkbox"/>	✓			
P2 Ciliates Son sample 10		<input type="checkbox"/>	✓			
sample 11		<input type="checkbox"/>				
Ladder		<input type="checkbox"/>	✓			

Chip Lot #

Reagent Kit Lot #

Chip Comments :

Assay Class: High Sensitivity DNA Assay
Data Path: C:\...ents and Settings\Bioanalyzer\2012-07-02\2012-07-02_002.xad

Created: 7/2/2012 11:20:47 AM
Modified: 7/2/2012 11:57:25 AM

Electrophoresis Assay Details

General Analysis Settings

Number of Available Sample and Ladder Wells (Max.) : 12
Minimum Visible Range [s] : 32
Maximum Visible Range [s] : 138
Start Analysis Time Range [s] : 33
End Analysis Time Range [s] : 137.5
Ladder Concentration [pg/μl] : 1950
Uses Standard Area for Ladder Fragments
Lower Marker Concentration [pg/μl] : 125
Upper Marker Concentration [pg/μl] : 75
Used Upper Marker for Quantitation
Standard Curve Fit is Point to Point
Show Data Aligned to Lower and Upper Marker

Integrator Settings

Integration Start Time [s] : 33.05
Integration End Time [s] : 137
Slope Threshold : 0.8
Height Threshold [FU] : 5
Area Threshold : 0.1
Width Threshold [s] : 0.6
Baseline Plateau [s] : 0.5

Filter Settings

Filter Width [s] : 0.5
Polynomial Order : 4

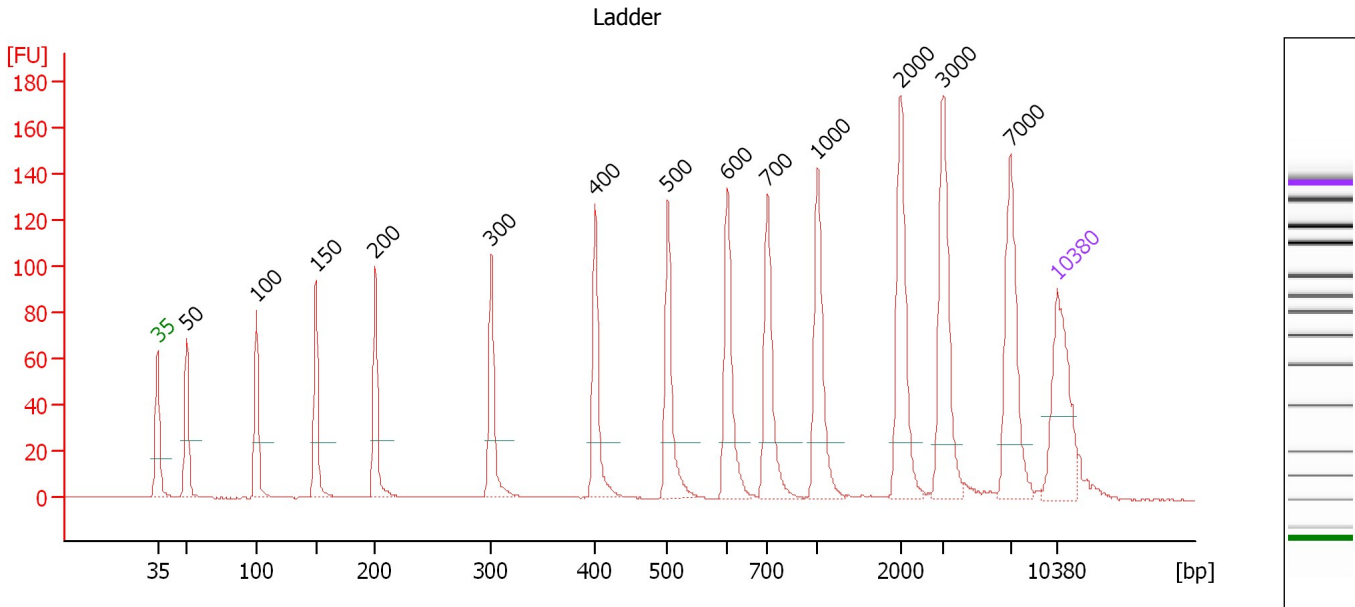
Ladder

Ladder Peak	Size	Area
1	35	160
2	50	210
3	100	208
4	150	221
5	200	242
6	300	270
7	400	305
8	500	306
9	600	336
10	700	321
11	1000	366
12	2000	413
13	3000	411
14	7000	400
15	10380	214

Assay Class: High Sensitivity DNA Assay
 Data Path: C:\...ents and Settings\Bioanalyzer\2012-07-02\2012-07-02_002.xad

Created: 7/2/2012 11:20:47 AM
 Modified: 7/2/2012 11:57:25 AM

Electropherogram Summary



Overall Results for Ladder

Noise: 0.1

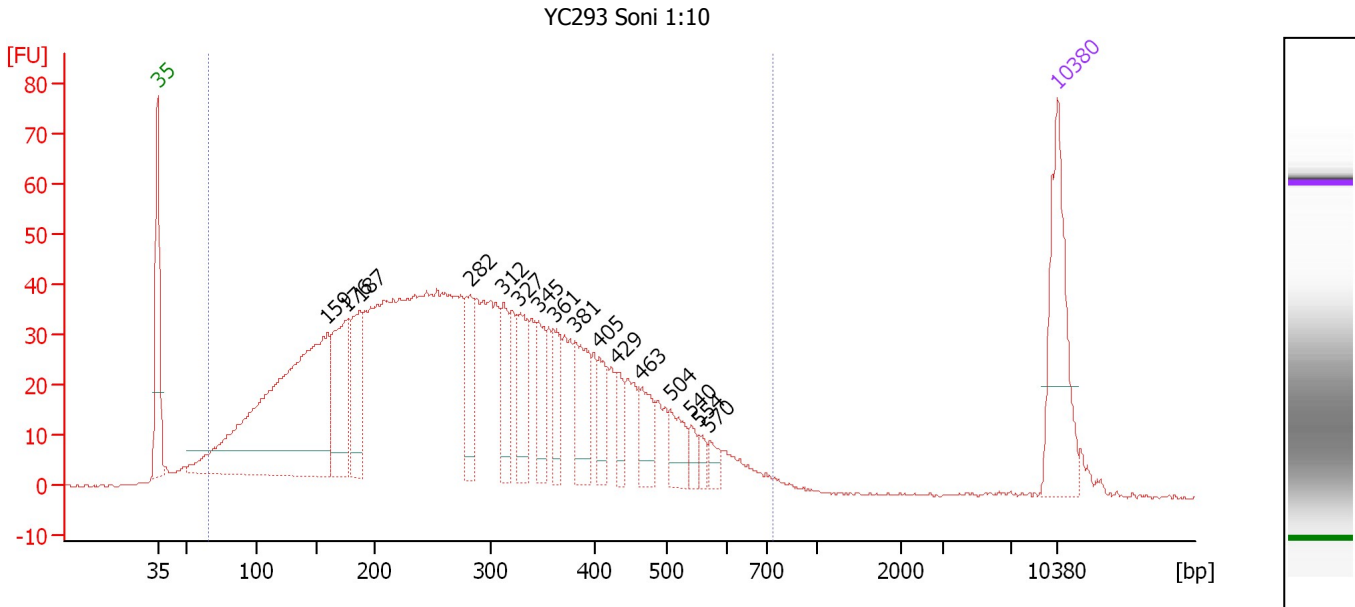
Peak table for Ladder

Peak	Size [bp]	Conc. [pg/μl]	Molarity [pmol/l]	Observations
1	35	125.00	5,411.3	Lower Marker
2	50	150.00	4,545.5	Ladder Peak
3	100	150.00	2,272.7	Ladder Peak
4	150	150.00	1,515.2	Ladder Peak
5	200	150.00	1,136.4	Ladder Peak
6	300	150.00	757.6	Ladder Peak
7	400	150.00	568.2	Ladder Peak
8	500	150.00	454.5	Ladder Peak
9	600	150.00	378.8	Ladder Peak
10	700	150.00	324.7	Ladder Peak
11	1,000	150.00	227.3	Ladder Peak
12	2,000	150.00	113.6	Ladder Peak
13	3,000	150.00	75.8	Ladder Peak
14	7,000	150.00	32.5	Ladder Peak
15	10,380	75.00	10.9	Upper Marker

Assay Class: High Sensitivity DNA Assay
 Data Path: C:\...ents and Settings\Bioanalyzer\2012-07-02\2012-07-02_002.xad

Created: 7/2/2012 11:20:47 AM
 Modified: 7/2/2012 11:57:25 AM

Electropherogram Summary Continued ...



Overall Results for sample 1 : YC293 Soni 1:10

Number of peaks found: 16 Corr. Area 1: 1,778.5
 Noise: 0.1

Peak table for sample 1 : YC293 Soni 1:10

Peak	Size [bp]	Conc. [pg/µl]	Molarity [pmol/l]	Observations
1	35	125.00	5,411.3	Lower Marker
2	159	424.88	4,042.9	
3	176	105.30	904.5	
4	187	77.67	630.4	
5	282	52.60	282.8	
6	312	46.19	224.5	
7	327	45.06	208.8	
8	345	36.35	159.4	
9	361	29.28	123.0	
10	381	54.26	215.9	
11	405	28.05	104.8	
12	429	20.48	72.2	
13	463	30.18	98.7	
14	504	26.36	79.3	
15	540	10.90	30.6	
16	554	7.62	20.8	
17	570	10.84	28.8	
18	10,380	75.00	10.9	Upper Marker

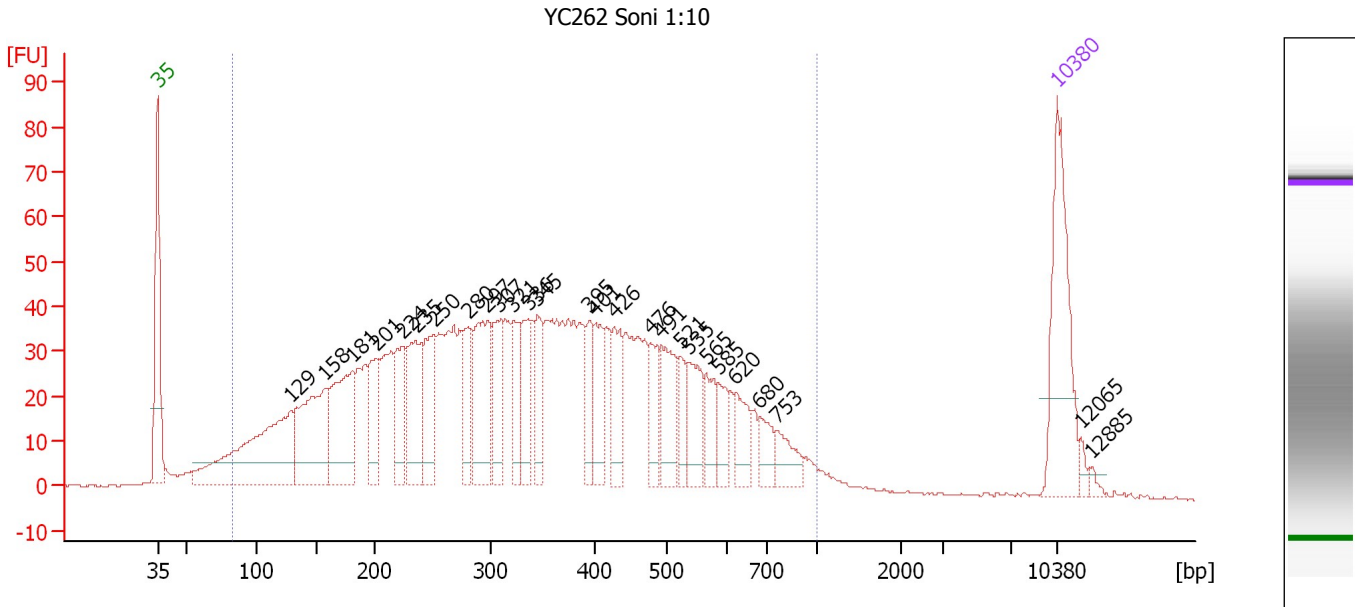
Region table for sample 1 : YC293 Soni 1:10

From [bp]	To [bp]	Average Size [bp]	Molarity [pmol/l]	Conc. [pg/µl]	Corr. Area	% of Total	Size distribution in CV [%]	Color
66	733	288	16,307.6	2,198.68	1,778.5	97	43.8	Blue

Assay Class: High Sensitivity DNA Assay
 Data Path: C:\...ents and Settings\Bioanalyzer\2012-07-02\2012-07-02_002.xad

Created: 7/2/2012 11:20:47 AM
 Modified: 7/2/2012 11:57:25 AM

Electropherogram Summary Continued ...



Overall Results for sample 2 : YC262 Soni 1:10

Number of peaks found: 27 Corr. Area 1: 1,852.0
 Noise: 0.2

Peak table for sample 2 : YC262 Soni 1:10

Peak	Size [bp]	Conc. [pg/μl]	Molarity [pmol/l]	Observations
1	35	125.00	5,411.3	Lower Marker
2	129	180.05	2,118.6	
3	158	117.62	1,130.0	
4	181	103.89	870.5	
5	201	46.79	352.8	
6	224	45.47	307.4	
7	235	65.05	419.6	
8	250	56.62	342.6	
9	280	34.80	188.5	
10	297	79.54	406.1	
11	307	41.94	206.8	
12	321	35.44	167.2	
13	336	36.86	166.2	
14	345	36.42	160.1	
15	395	27.47	105.4	
16	401	34.96	132.2	
17	426	38.95	138.5	
18	476	27.29	86.8	
19	491	45.13	139.3	
20	521	20.50	59.6	
21	535	36.36	103.0	
22	565	25.40	68.1	
23	585	18.79	48.7	
24	620	25.31	61.8	
25	680	17.66	39.3	
26	753	19.84	39.9	

Assay Class: High Sensitivity DNA Assay
 Data Path: C:\...ents and Settings\Bioanalyzer\2012-07-02\2012-07-02_002.xad


Created: 7/2/2012 11:20:47 AM
 Modified: 7/2/2012 11:57:25 AM

Electropherogram Summary Continued ...

... Peak table for sample 2 : YC262 Soni 1:10

Peak	Size [bp]	Conc. [pg/μl]	Molarity [pmol/l]	Observations
27	10,380	75.00	10.9	Upper Marker
28	12,065	0.00	0.0	
29	12,885	0.00	0.0	

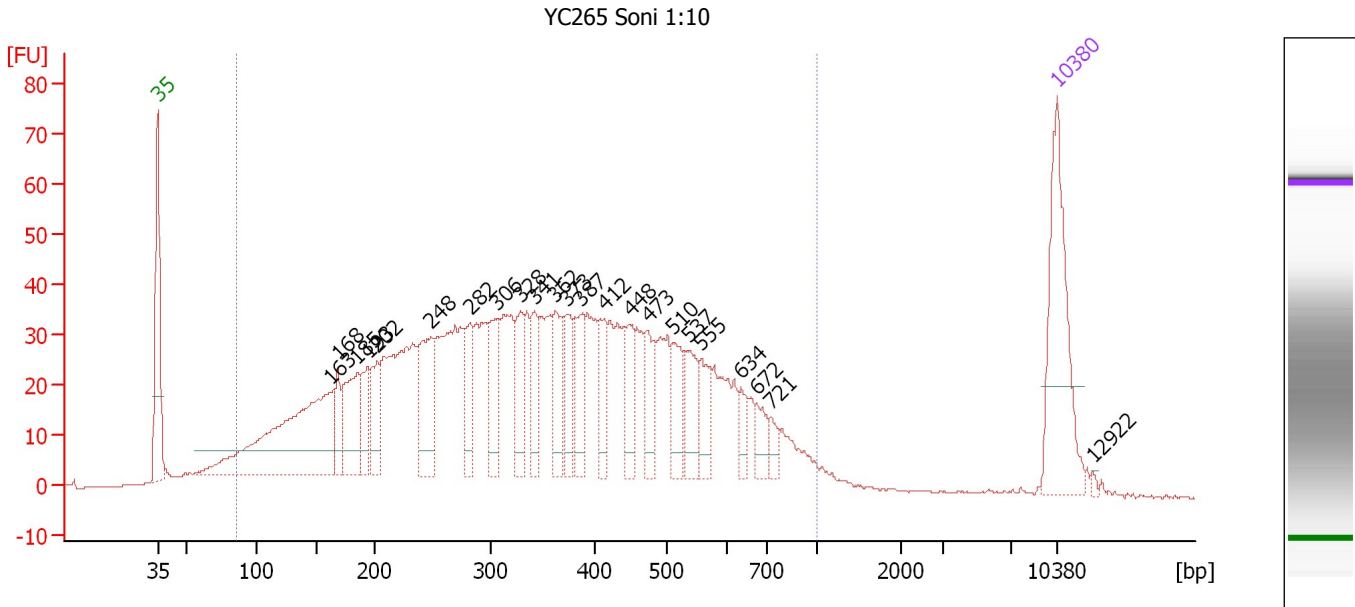
Region table for sample 2 : YC262 Soni 1:10

From [bp]	To [bp]	Average Size [bp]	Molarity [pmol/l]	Conc. [pg/μl]	Corr. Area	% of Total	Size distribution in CV [%]	Color
83	1,000	359	11,794.9	1,931.99	1,852.0	95	46.1	

Assay Class: High Sensitivity DNA Assay
 Data Path: C:\...ents and Settings\Bioanalyzer\2012-07-02\2012-07-02_002.xad

Created: 7/2/2012 11:20:47 AM
 Modified: 7/2/2012 11:57:25 AM

Electropherogram Summary Continued ...



Overall Results for sample 3 : YC265 Soni 1:10

Number of peaks found: 23 Corr. Area 1: 1,672.8
 Noise: 0.2

Peak table for sample 3 : YC265 Soni 1:10


Peak	Size [bp]	Conc. [pg/μl]	Molarity [pmol/l]	Observations
1	35	125.00	5,411.3	Lower Marker
2	163	210.02	1,953.9	
3	168	26.89	241.8	
4	185	58.81	482.2	
5	193	30.33	237.6	
6	202	33.37	250.8	
7	248	65.09	398.2	
8	282	36.71	197.1	
9	306	38.52	190.9	
10	328	33.09	152.9	
11	341	29.81	132.3	
12	362	37.16	155.6	
13	373	33.79	137.1	
14	387	36.88	144.4	
15	412	28.86	106.1	
16	448	30.62	103.6	
17	473	25.01	80.1	
18	510	28.25	84.0	
19	537	30.88	87.2	
20	555	22.93	62.6	
21	634	11.08	26.5	
22	672	14.37	32.4	
23	721	9.43	19.8	
24	10,380	75.00	10.9	Upper Marker
25	12,922	0.00	0.0	

Assay Class: High Sensitivity DNA Assay
Data Path: C:\...ents and Settings\Bioanalyzer\2012-07-02\2012-07-02_002.xad

Created: 7/2/2012 11:20:47 AM
Modified: 7/2/2012 11:57:25 AM

Electropherogram Summary Continued ...

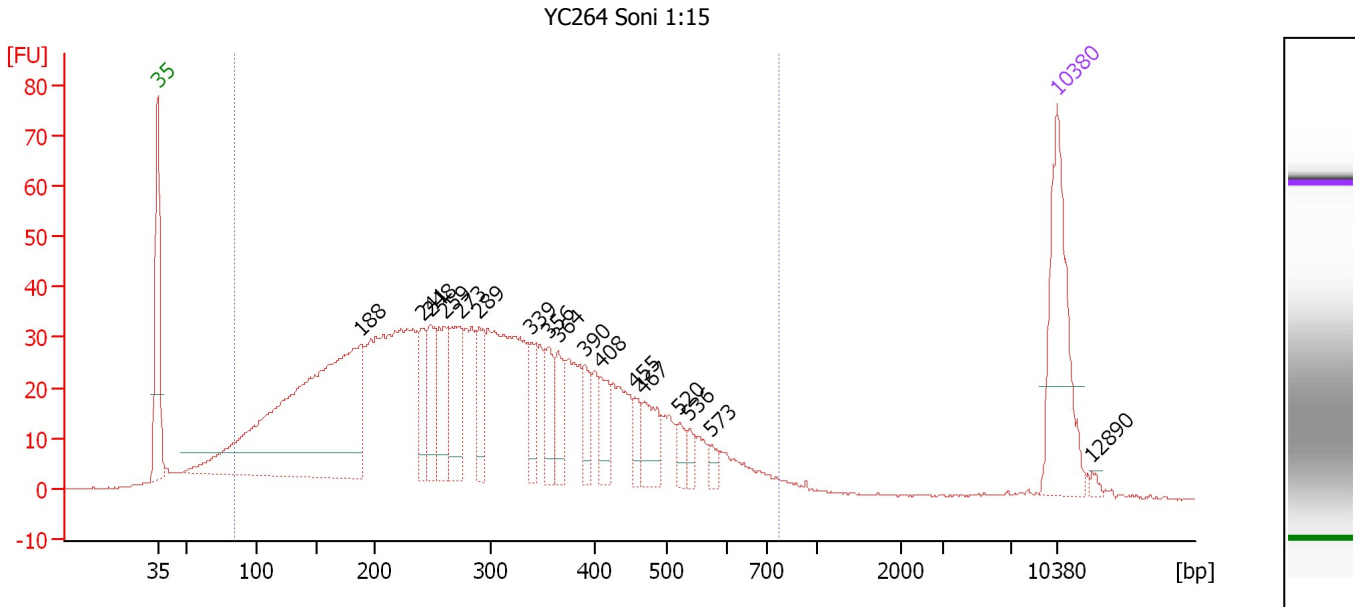
... Region table for sample 3 : YC265 Soni 1:10

From [bp]	To [bp]	Average Size [bp]	Molarity [pmol/l]	Conc. [pg/ μ l]	Corr. Area	% of Total	Size distribution in CV [%]	Color
86	1,000	367	10,812.8	1,832.40	1,672.8	95	45.3	

Assay Class: High Sensitivity DNA Assay
 Data Path: C:\...ents and Settings\Bioanalyzer\2012-07-02\2012-07-02_002.xad

Created: 7/2/2012 11:20:47 AM
 Modified: 7/2/2012 11:57:25 AM

Electropherogram Summary Continued ...



Overall Results for sample 4 : YC264 Soni 1:15

Number of peaks found: 17 Corr. Area 1: 1,454.0
 Noise: 0.2

Peak table for sample 4 : YC264 Soni 1:15

Peak	Size [bp]	Conc. [pg/μl]	Molarity [pmol/l]	Observations
1	35	125.00	5,411.3	Lower Marker
2	188	408.32	3,289.3	
3	241	35.92	225.6	
4	248	41.63	254.7	
5	259	48.23	281.7	
6	273	62.51	346.5	
7	289	37.25	195.1	
8	339	28.29	126.5	
9	356	27.59	117.6	
10	364	31.21	129.7	
11	390	19.45	75.5	
12	408	23.62	87.7	
13	455	13.53	45.1	
14	467	29.35	95.2	
15	520	11.15	32.5	
16	536	9.23	26.1	
17	573	7.17	19.0	
18	10,380	75.00	10.9	Upper Marker
19	12,890	0.00	0.0	

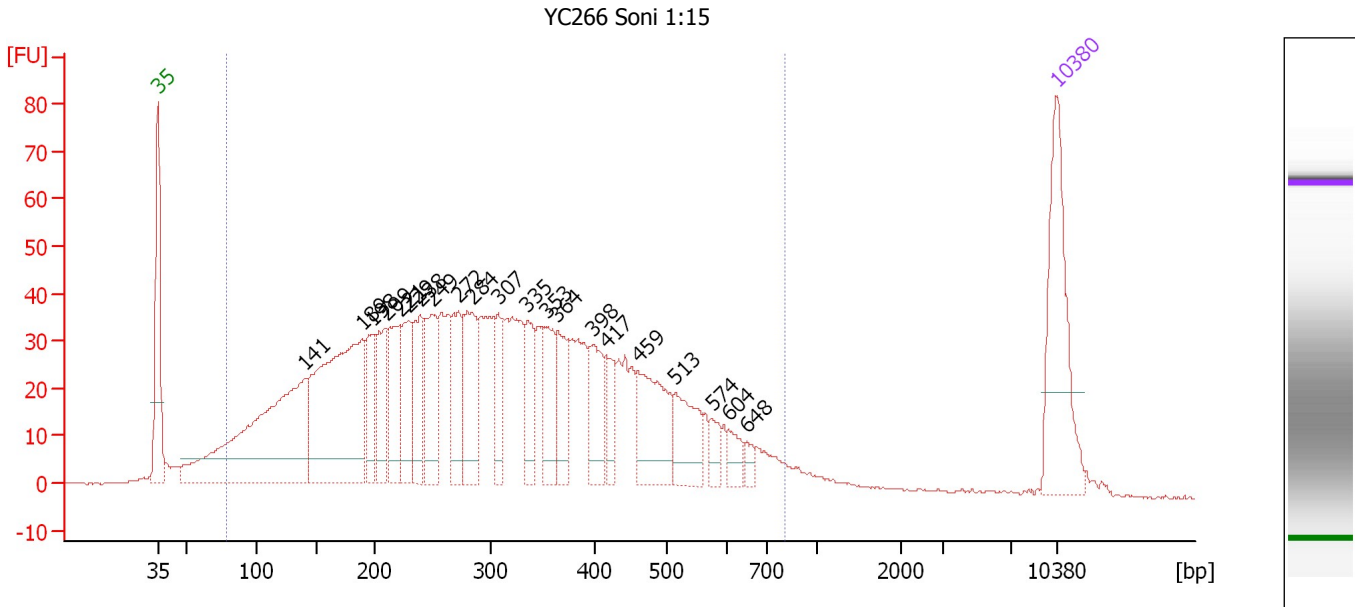
Region table for sample 4 : YC264 Soni 1:15

From [bp]	To [bp]	Average Size [bp]	Molarity [pmol/l]	Conc. [pg/μl]	Corr. Area	% of Total	Size distribution in CV [%]	Color
85	771	299	11,675.0	1,688.43	1,454.0	94	43.0	Blue

Assay Class: High Sensitivity DNA Assay
 Data Path: C:\...ents and Settings\Bioanalyzer\2012-07-02\2012-07-02_002.xad

Created: 7/2/2012 11:20:47 AM
 Modified: 7/2/2012 11:57:25 AM

Electropherogram Summary Continued ...



Overall Results for sample 5 : YC266 Soni 1:15

Number of peaks found: 21 Corr. Area 1: 1,700.7
 Noise: 0.2

Peak table for sample 5 : YC266 Soni 1:15

Peak	Size [bp]	Conc. [pg/μl]	Molarity [pmol/l]	Observations
1	35	125.00	5,411.3	Lower Marker
2	141	273.18	2,934.8	
3	189	237.57	1,903.2	
4	198	44.54	341.5	
5	209	53.53	388.1	
6	221	53.44	366.6	
7	229	53.68	355.1	
8	238	53.42	339.7	
9	249	61.76	375.7	
10	272	50.69	282.5	
11	284	68.41	365.2	
12	307	35.75	176.5	
13	335	38.77	175.5	
14	353	44.54	190.9	
15	364	39.65	165.2	
16	398	38.42	146.1	
17	417	21.37	77.7	
18	459	69.09	228.0	
19	513	42.21	124.6	
20	574	11.73	30.9	
21	604	12.28	30.8	
22	648	6.54	15.3	
23	10,380	75.00	10.9	Upper Marker

Assay Class: High Sensitivity DNA Assay
Data Path: C:\...ents and Settings\Bioanalyzer\2012-07-02\2012-07-02_002.xad

Created: 7/2/2012 11:20:47 AM
Modified: 7/2/2012 11:57:25 AM

Electropherogram Summary Continued ...

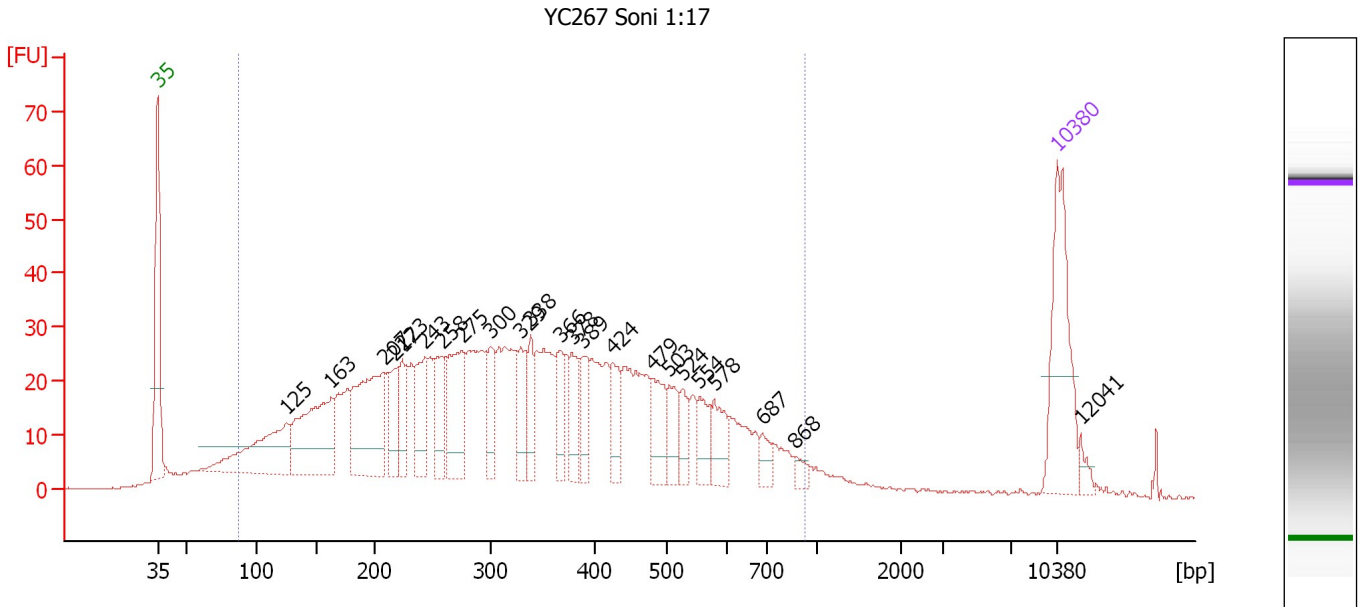
... Region table for sample 5 : YC266 Soni 1:15

From [bp]	To [bp]	Average Size [bp]	Molarity [pmol/l]	Conc. [pg/μl]	Corr. Area	% of Total	Size distribution in CV [%]	Color
79	801	315	11,992.5	1,771.30	1,700.7	94	44.3	■

Assay Class: High Sensitivity DNA Assay
 Data Path: C:\...ents and Settings\Bioanalyzer\2012-07-02\2012-07-02_002.xad

Created: 7/2/2012 11:20:47 AM
 Modified: 7/2/2012 11:57:25 AM

Electropherogram Summary Continued ...



Overall Results for sample 6 : YC267 Soni 1:17

Number of peaks found: 23 Corr. Area 1: 1,253.9
 Noise: 0.2

Peak table for sample 6 : YC267 Soni 1:17

Peak	Size [bp]	Conc. [pg/μl]	Molarity [pmol/l]	Observations
1	35	125.00	5,411.3	Lower Marker
2	125	111.76	1,353.0	
3	163	125.60	1,167.4	
4	207	128.46	939.4	
5	217	33.64	235.4	
6	223	37.72	256.1	
7	243	50.04	312.1	
8	258	47.56	279.5	
9	275	78.18	431.0	
10	300	33.40	168.9	
11	329	35.70	164.4	
12	338	31.13	139.5	
13	366	28.17	116.4	
14	378	32.91	131.9	
15	389	29.94	116.7	
16	424	30.32	108.3	
17	479	35.72	112.9	
18	503	24.93	75.2	
19	524	19.09	55.2	
20	554	24.55	67.2	
21	578	26.40	69.2	
22	687	12.13	26.8	
23	868	7.18	12.5	
24	10,380	75.00	10.9	Upper Marker
25	12,041	0.00	0.0	

Assay Class: High Sensitivity DNA Assay
Data Path: C:\...ents and Settings\Bioanalyzer\2012-07-02\2012-07-02_002.xad

Created: 7/2/2012 11:20:47 AM
Modified: 7/2/2012 11:57:25 AM

Electropherogram Summary Continued ...

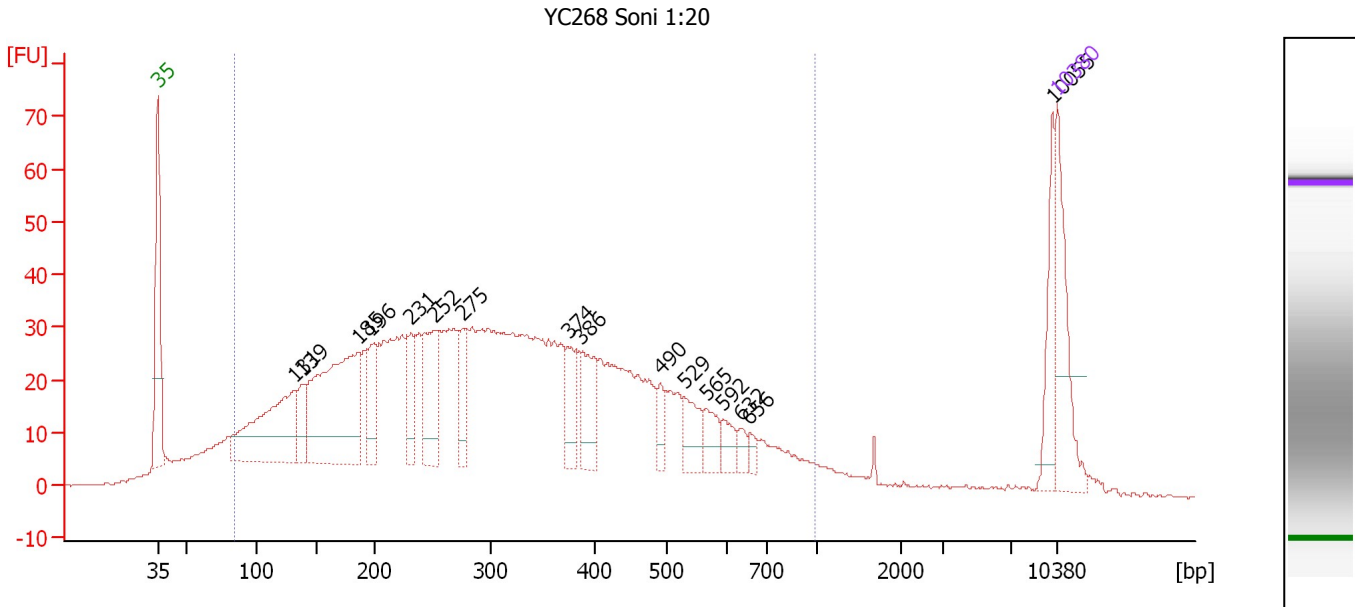
... Region table for sample 6 : YC267 Soni 1:17

From [bp]	To [bp]	Average Size [bp]	Molarity [pmol/l]	Conc. [pg/μl]	Corr. Area	% of Total	Size distribution in CV [%]	Color
88	929	349	11,280.0	1,825.45	1,253.9	92	45.5	■

Assay Class: High Sensitivity DNA Assay
 Data Path: C:\...ents and Settings\Bioanalyzer\2012-07-02\2012-07-02_002.xad

Created: 7/2/2012 11:20:47 AM
 Modified: 7/2/2012 11:57:25 AM

Electropherogram Summary Continued ...



Overall Results for sample 7 : YC268 Soni 1:20

Number of peaks found: 16 Corr. Area 1: 1,459.7
 Noise: 0.2

Peak table for sample 7 : YC268 Soni 1:20

Peak	Size [bp]	Conc. [pg/μl]	Molarity [pmol/l]	Observations
1	35	125.00	5,411.3	Lower Marker
2	131	195.65	2,258.2	
3	139	39.68	433.2	
4	185	276.90	2,266.1	
5	196	50.61	390.3	
6	231	50.63	332.5	
7	252	98.68	593.8	
8	275	47.86	263.6	
9	374	40.96	165.8	
10	386	63.77	250.3	
11	490	21.96	68.0	
12	529	37.54	107.5	
13	565	26.70	71.5	
14	592	18.91	48.4	
15	632	10.89	26.1	
16	656	8.50	19.6	
17	10,055	46.13	7.0	
18	10,380	75.00	10.9	Upper Marker

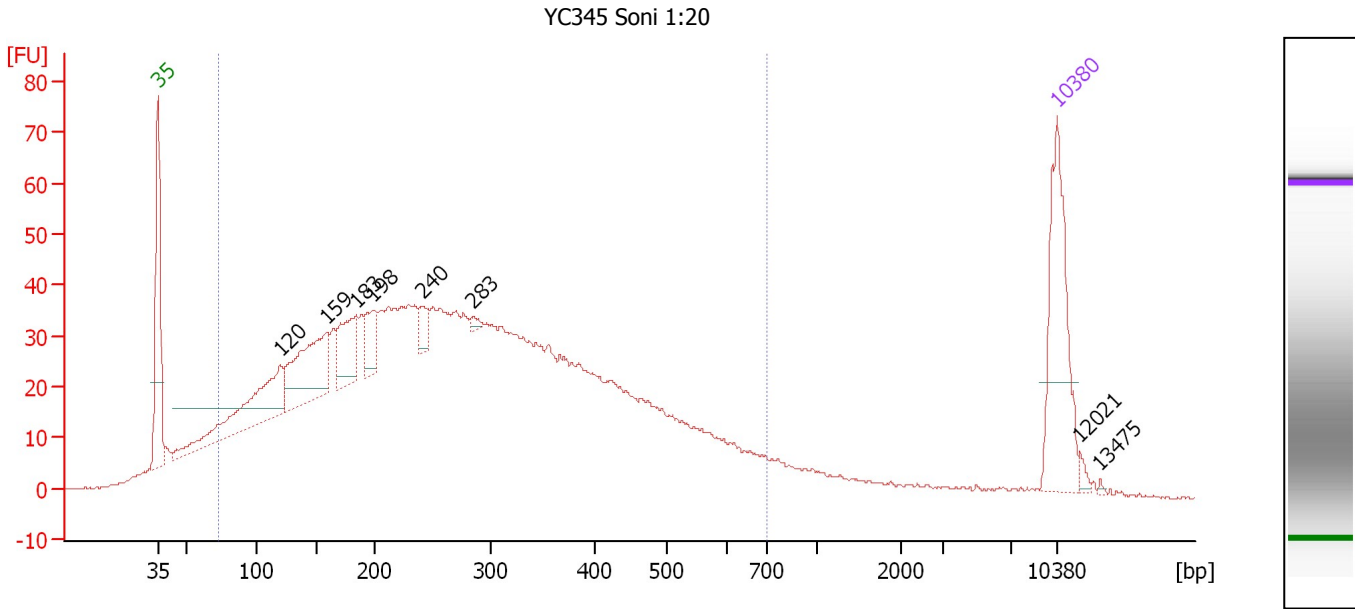
Region table for sample 7 : YC268 Soni 1:20

From [bp]	To [bp]	Average Size [bp]	Molarity [pmol/l]	Conc. [pg/μl]	Corr. Area	% of Total	Size distribution in CV [%]	Color
84	983	331	17,940.4	2,699.70	1,459.7	89	48.7	Blue

Assay Class: High Sensitivity DNA Assay
 Data Path: C:\...ents and Settings\Bioanalyzer\2012-07-02\2012-07-02_002.xad

Created: 7/2/2012 11:20:47 AM
 Modified: 7/2/2012 11:57:25 AM

Electropherogram Summary Continued ...



Setpoint Deviations for sample 8 : YC345 Soni 1:20

Height Threshold [FU] : 1

Overall Results for sample 8 : YC345 Soni 1:20

Number of peaks found: 8 Corr. Area 1: 1,646.4
 Noise: 0.2

Peak table for sample 8 : YC345 Soni 1:20

Peak	Size [bp]	Conc. [pg/μl]	Molarity [pmol/l]	Observations
1	35	125.00	5,411.3	Lower Marker
2	120	108.15	1,366.6	
3	159	97.60	927.5	
4	183	48.45	400.1	
5	198	27.01	207.1	
6	240	13.51	85.3	
7	283	3.52	18.9	
8	10,380	75.00	10.9	Upper Marker
9	12,021	0.00	0.0	
10	13,475	0.00	0.0	

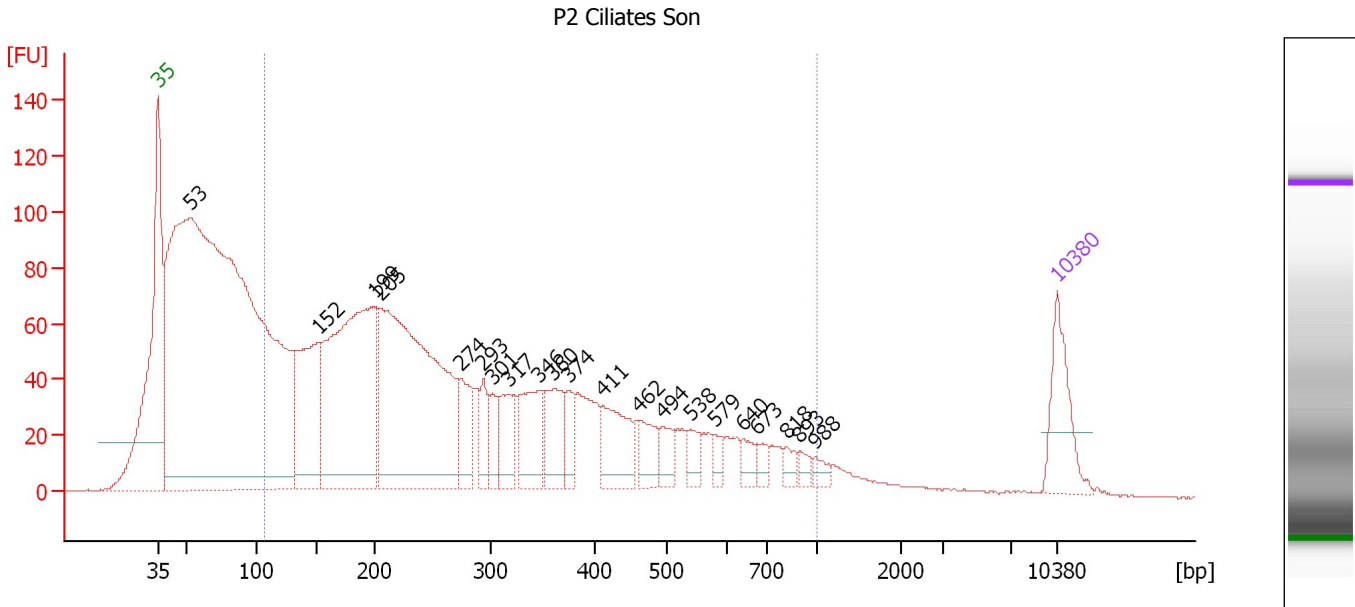
Region table for sample 8 : YC345 Soni 1:20

From [bp]	To [bp]	Average Size [bp]	Molarity [pmol/l]	Conc. [pg/μl]	Corr. Area	% of Total	Size distribution in CV [%]	Color
73	698	286	15,947.4	2,092.98	1,646.4	90	46.6	Blue

Assay Class: High Sensitivity DNA Assay
 Data Path: C:\...ents and Settings\Bioanalyzer\2012-07-02\2012-07-02_002.xad

Created: 7/2/2012 11:20:47 AM
 Modified: 7/2/2012 11:57:25 AM

Electropherogram Summary Continued ...



Overall Results for sample 9 : P2 Ciliates Son

Number of peaks found: 21 Corr. Area 1: 2,459.7
 Noise: 0.3

Peak table for sample 9 : P2 Ciliates Son

Peak	Size [bp]	Conc. [pg/μl]	Molarity [pmol/l]	Observations
1	35	125.00	5,411.3	Lower Marker
2	53	2,690.19	76,879.2	
3	152	274.72	2,743.8	
4	199	599.41	4,564.0	
5	205	720.08	5,330.7	
6	274	80.57	445.2	
7	293	47.08	243.4	
8	301	39.56	199.0	
9	317	70.37	336.3	
10	346	103.85	454.3	
11	360	80.59	339.4	
12	374	39.75	161.2	
13	411	95.67	353.0	
14	462	50.13	164.5	
15	494	31.64	97.0	
16	538	26.76	75.3	
17	579	17.64	46.2	
18	640	21.79	51.6	
19	673	16.98	38.2	
20	818	15.41	28.5	
21	893	11.66	19.8	
22	988	13.20	20.3	
23	10,380	75.00	10.9	Upper Marker

Assay Class: High Sensitivity DNA Assay
Data Path: C:\...ents and Settings\Bioanalyzer\2012-07-02\2012-07-02_002.xad

Created: 7/2/2012 11:20:47 AM
Modified: 7/2/2012 11:57:25 AM

Electropherogram Summary Continued ...

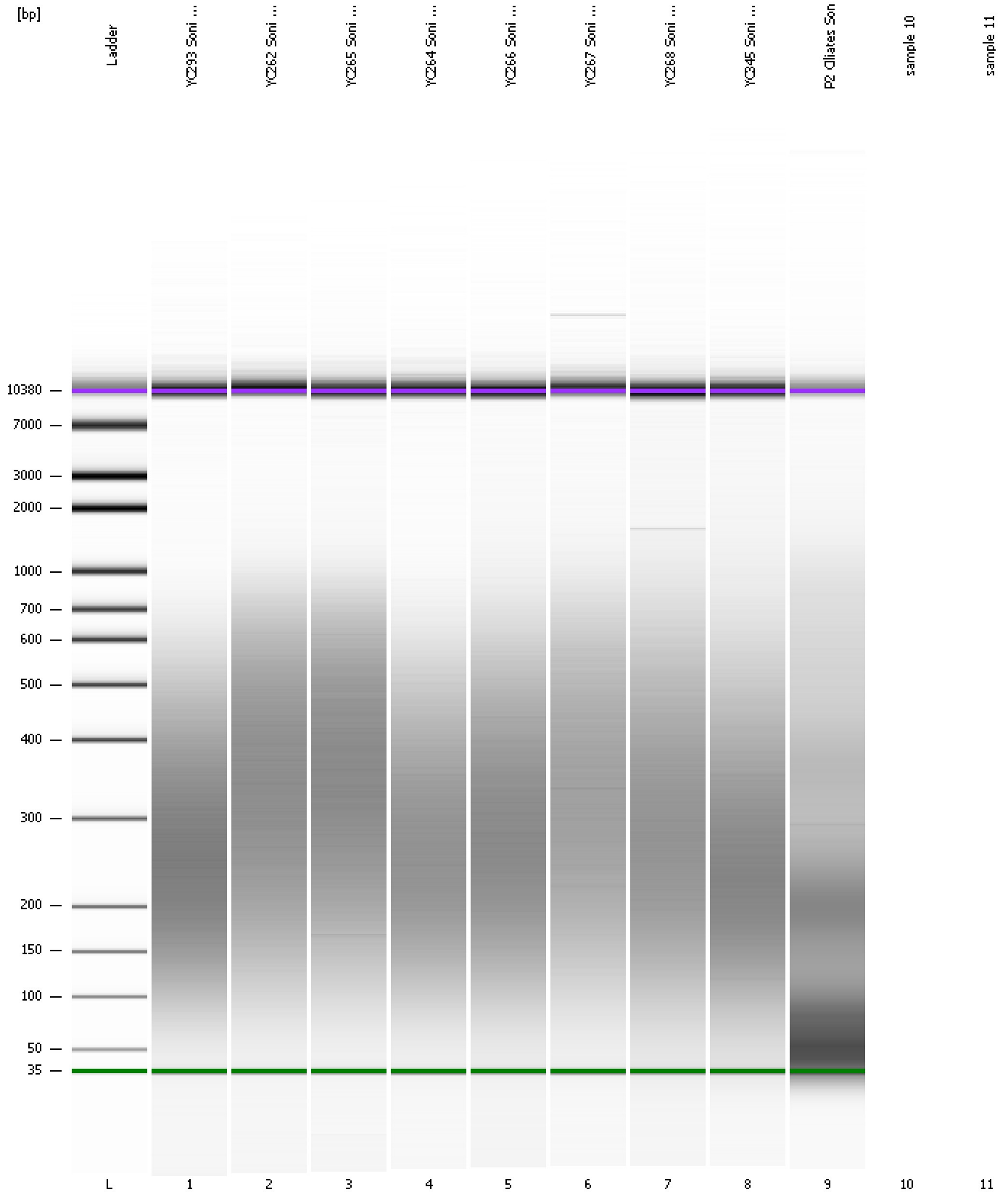
... Region table for sample 9 : P2 Ciliates Son

From [bp]	To [bp]	Average Size [bp]	Molarity [pmol/l]	Conc. [pg/μl]	Corr. Area	% of Total	Size distribution in CV [%]	Color
108	1,000	314	22,237.9	3,158.14	2,459.7	62	55.8	■

Assay Class: High Sensitivity DNA Assay
Data Path: C:\...ents and Settings\Bioanalyzer\2012-07-02\2012-07-02_002.xad

Created: 7/2/2012 11:20:47 AM
Modified: 7/2/2012 11:57:25 AM

Gel Image



Assay Class: High Sensitivity DNA Assay
Data Path: C:\...ents and Settings\Bioanalyzer\2012-07-02\2012-07-02_002.xad

Created: 7/2/2012 11:20:47 AM
Modified: 7/2/2012 11:57:25 AM

Invalid Samples

Sample 10 has not been run, no results available.

Sample 11 has not been run, no results available.

Assay Class: High Sensitivity DNA Assay
 Data Path: C:\...ents and Settings\Bioanalyzer\2012-07-02\2012-07-02_002.xad

Created: 7/2/2012 11:20:47 AM
 Modified: 7/2/2012 11:57:25 AM

Run Logbook

Description	Number	Source	Category	Sub Category	Time	Time Zone	User	Host
Run ended on port 1 (Number of wells acquired: 10)		Instrument	Run		7/2/2012 11:56:23 AM	(GMT --07:00) Pacific Standard Time	UC Davis	D8XSMGH1
Run started on port 1 (File: C:\Documents and Settings\Bioanalyzer\2012-07-02\2012-07-02_002.xad)		Instrument	Run		7/2/2012 11:20:53 AM	(GMT --07:00) Pacific Standard Time	UC Davis	D8XSMGH1
Product Number : G2938B		Instrument	Run		7/2/2012 11:20:53 AM	(GMT --07:00) Pacific Standard Time	UC Davis	D8XSMGH1
Name :		Instrument	Run		7/2/2012 11:20:53 AM	(GMT --07:00) Pacific Standard Time	UC Davis	D8XSMGH1
Vendor : Agilent Technologies		Instrument	Run		7/2/2012 11:20:53 AM	(GMT --07:00) Pacific Standard Time	UC Davis	D8XSMGH1
Serial# : DE13701086		Instrument	Run		7/2/2012 11:20:53 AM	(GMT --07:00) Pacific Standard Time	UC Davis	D8XSMGH1
Firmware : C.01.069		Instrument	Run		7/2/2012 11:20:53 AM	(GMT --07:00) Pacific Standard Time	UC Davis	D8XSMGH1
Cartridge : Electrode		Instrument	Run		7/2/2012 11:20:53 AM	(GMT --07:00) Pacific Standard Time	UC Davis	D8XSMGH1