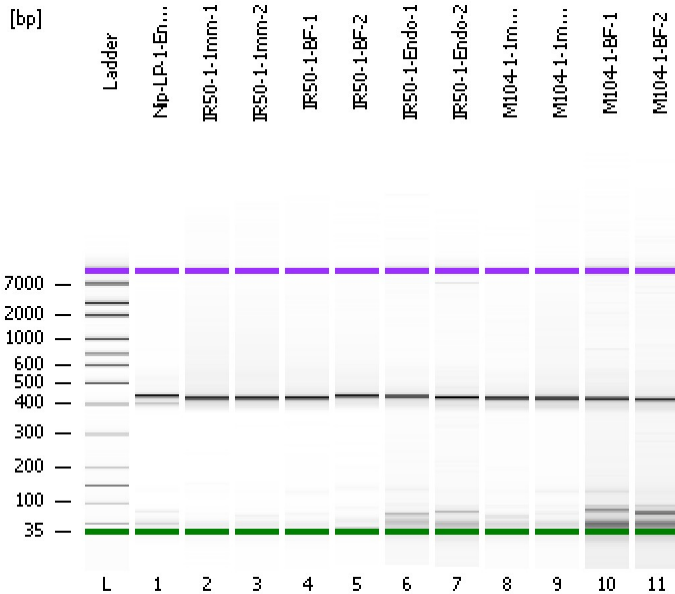


Assay Class: High Sensitivity DNA Assay  
Data Path: C:\...ents and Settings\Bioanalyzer\2012-07-30\2012-07-30\_004.xad

Created: 7/30/2012 2:26:19 PM  
Modified: 7/30/2012 3:07:41 PM

**Electrophoresis File Run Summary**



Instrument Information:

Instrument Name: DE13701086      Firmware: C.01.069  
Serial#: DE13701086      Type: G2938B

Assay Information:

Assay Origin Path: C:\Program Files\Agilent\2100 bioanalyzer\2100 expert\assays\dsDNA\High Sensitivity DNA.xsy  
Assay Class: High Sensitivity DNA Assay  
Version: 1.03  
Assay Comments: Copyright © 2003-2010 Agilent Technologies

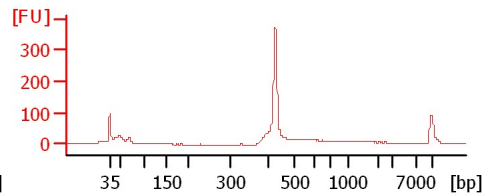
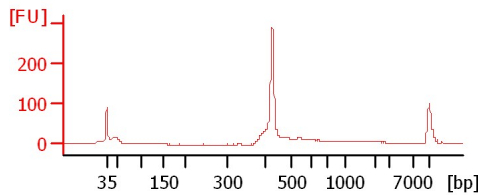
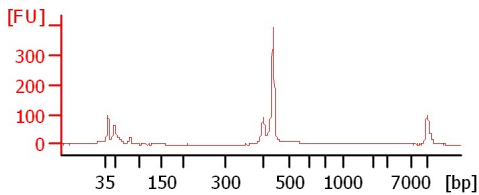
Chip Information:

Chip Lot #:  
Reagent Kit Lot #:  
Chip Comments:

**Nip-LP-1-Endo-2**

**IR50-1-1mm-1**

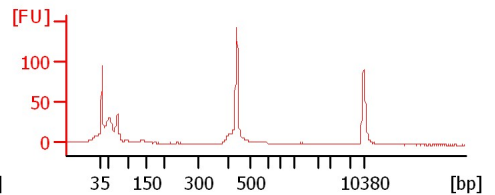
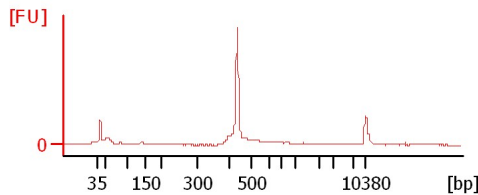
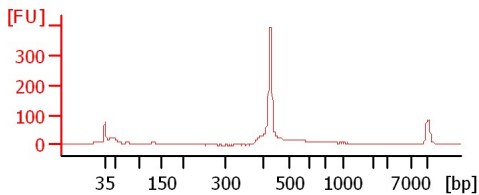
**IR50-1-1mm-2**



**IR50-1-BF-1**

**IR50-1-BF-2**

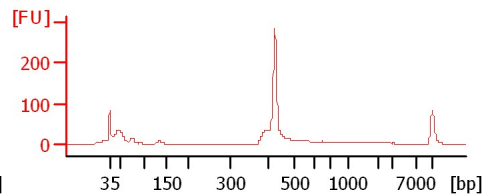
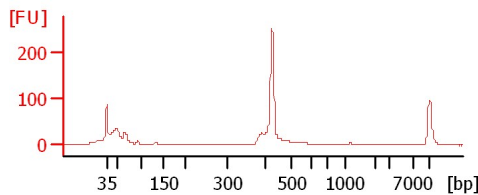
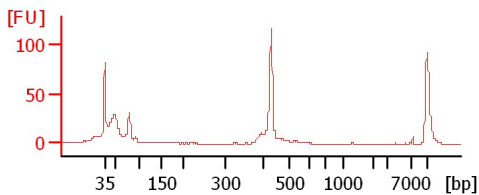
**IR50-1-Endo-1**



**IR50-1-Endo-2**

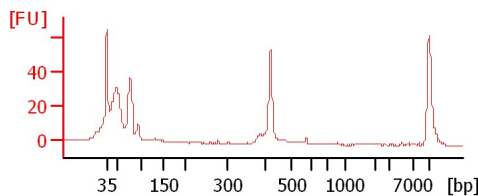
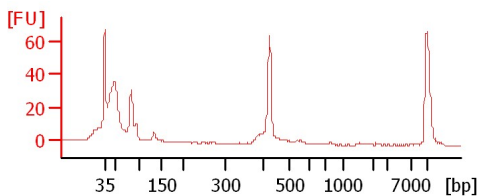
**M104-1-1mm-1**

**M104-1-1mm-2**



**M104-1-BF-1**

**M104-1-BF-2**



Assay Class: High Sensitivity DNA Assay  
 Data Path: C:\...ents and Settings\Bioanalyzer\2012-07-30\2012-07-30\_004.xad

Created: 7/30/2012 2:26:19 PM  
 Modified: 7/30/2012 3:07:41 PM

**Electrophoresis File Run Summary (Chip Summary)**

Sample Name	Sample Comment	Rest. Digest	Status	Observation	Result Label	Result Color
Nip-LP-1-Endo-2		<input type="checkbox"/>	✓			
IR50-1-1mm-1		<input type="checkbox"/>	✓			
IR50-1-1mm-2		<input type="checkbox"/>	✓			
IR50-1-BF-1		<input type="checkbox"/>	✓			
IR50-1-BF-2		<input type="checkbox"/>	✓			
IR50-1-Endo-1		<input type="checkbox"/>	✓			
IR50-1-Endo-2		<input type="checkbox"/>	✓			
M104-1-1mm-1		<input type="checkbox"/>	✓			
M104-1-1mm-2		<input type="checkbox"/>	✓			
M104-1-BF-1		<input type="checkbox"/>	✓			
M104-1-BF-2		<input type="checkbox"/>	✓			
Ladder		<input type="checkbox"/>	✓			

**Chip Lot #**

**Reagent Kit Lot #**

**Chip Comments :**

Assay Class: High Sensitivity DNA Assay  
Data Path: C:\...ents and Settings\Bioanalyzer\2012-07-30\2012-07-30\_004.xad

Created: 7/30/2012 2:26:19 PM  
Modified: 7/30/2012 3:07:41 PM

**Electrophoresis Assay Details**

**General Analysis Settings**

Number of Available Sample and Ladder Wells (Max.) : 12  
Minimum Visible Range [s] : 32  
Maximum Visible Range [s] : 138  
Start Analysis Time Range [s] : 33  
End Analysis Time Range [s] : 137.5  
Ladder Concentration [pg/μl] : 1950  
Uses Standard Area for Ladder Fragments  
Lower Marker Concentration [pg/μl] : 125  
Upper Marker Concentration [pg/μl] : 75  
Used Upper Marker for Quantitation  
Standard Curve Fit is Point to Point  
Show Data Aligned to Lower and Upper Marker

**Integrator Settings**

Integration Start Time [s] : 33.05  
Integration End Time [s] : 137  
Slope Threshold : 0.8  
Height Threshold [FU] : 5  
Area Threshold : 0.1  
Width Threshold [s] : 0.6  
Baseline Plateau [s] : 0.5

**Filter Settings**

Filter Width [s] : 0.5  
Polynomial Order : 4

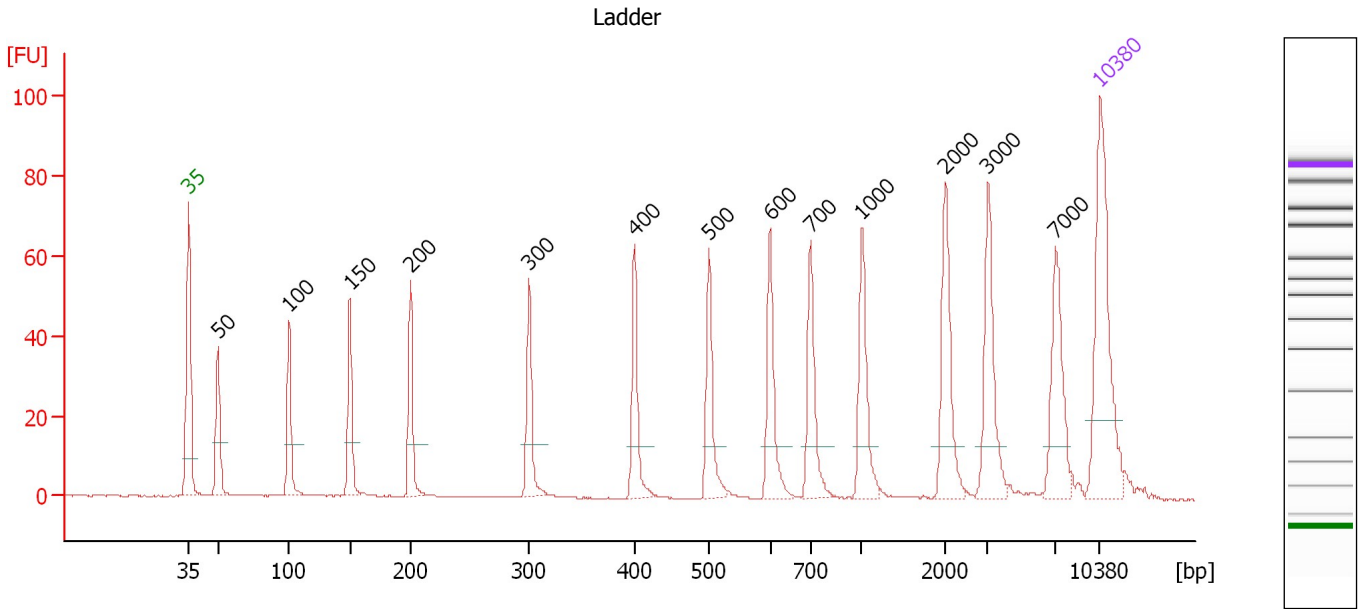
**Ladder**

Ladder Peak	Size	Area
1	35	160
2	50	210
3	100	208
4	150	221
5	200	242
6	300	270
7	400	305
8	500	306
9	600	336
10	700	321
11	1000	366
12	2000	413
13	3000	411
14	7000	400
15	10380	214

Assay Class: High Sensitivity DNA Assay  
 Data Path: C:\...ents and Settings\Bioanalyzer\2012-07-30\2012-07-30\_004.xad

Created: 7/30/2012 2:26:19 PM  
 Modified: 7/30/2012 3:07:41 PM

**Electropherogram Summary**



**Overall Results for Ladder**

Noise: 0.1

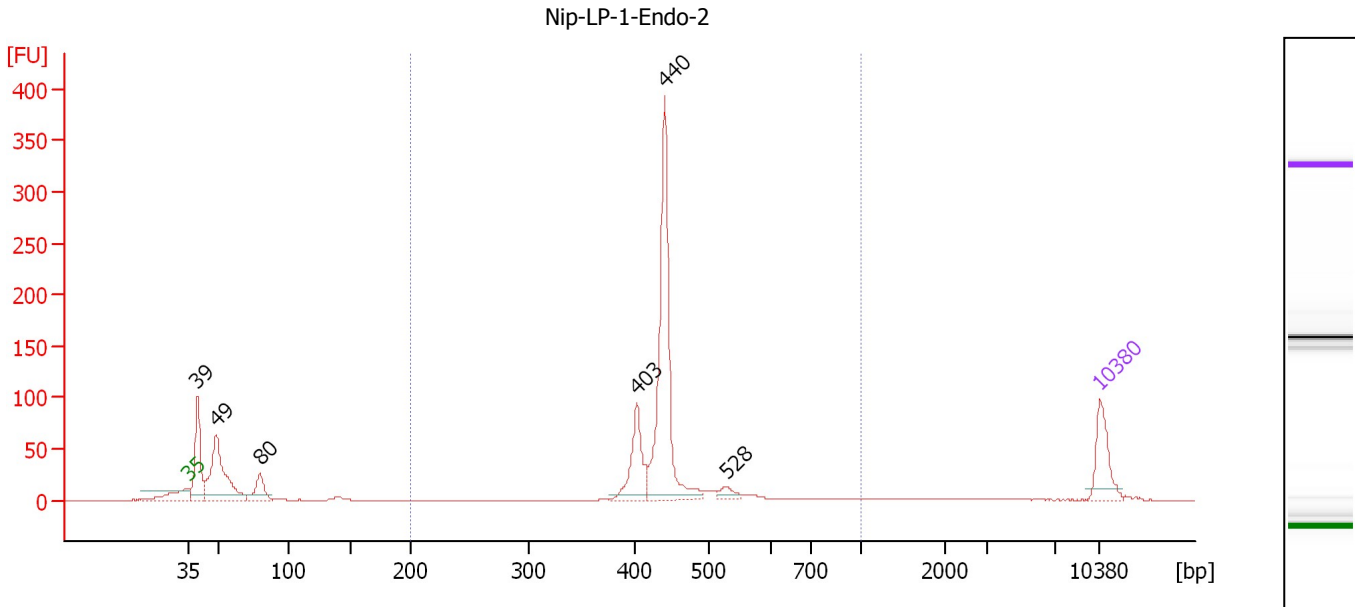
**Peak table for Ladder**

Peak	Size [bp]	Conc. [pg/μl]	Molarity [pmol/l]	Observations
1	35	125.00	5,411.3	Lower Marker
2	50	150.00	4,545.5	Ladder Peak
3	100	150.00	2,272.7	Ladder Peak
4	150	150.00	1,515.2	Ladder Peak
5	200	150.00	1,136.4	Ladder Peak
6	300	150.00	757.6	Ladder Peak
7	400	150.00	568.2	Ladder Peak
8	500	150.00	454.5	Ladder Peak
9	600	150.00	378.8	Ladder Peak
10	700	150.00	324.7	Ladder Peak
11	1,000	150.00	227.3	Ladder Peak
12	2,000	150.00	113.6	Ladder Peak
13	3,000	150.00	75.8	Ladder Peak
14	7,000	150.00	32.5	Ladder Peak
15	10,380	75.00	10.9	Upper Marker

Assay Class: High Sensitivity DNA Assay  
 Data Path: C:\...ents and Settings\Bioanalyzer\2012-07-30\2012-07-30\_004.xad

Created: 7/30/2012 2:26:19 PM  
 Modified: 7/30/2012 3:07:41 PM

**Electropherogram Summary Continued ...**



**Overall Results for sample 1 : Nip-LP-1-Endo-2**

Number of peaks found: 6                      Corr. Area 1: 642.2  
 Noise: 0.2

**Peak table for sample 1 : Nip-LP-1-Endo-2**

Peak	Size [bp]	Conc. [pg/μl]	Molarity [pmol/l]	Observations
1	35	125.00	5,411.3	Lower Marker
2	39	203.69	7,829.9	
3	49	306.35	9,448.5	
4	80	72.95	1,389.7	
5	403	133.14	500.9	
6	440	483.89	1,665.3	
7	528	21.59	61.9	
8	10,380	75.00	10.9	Upper Marker

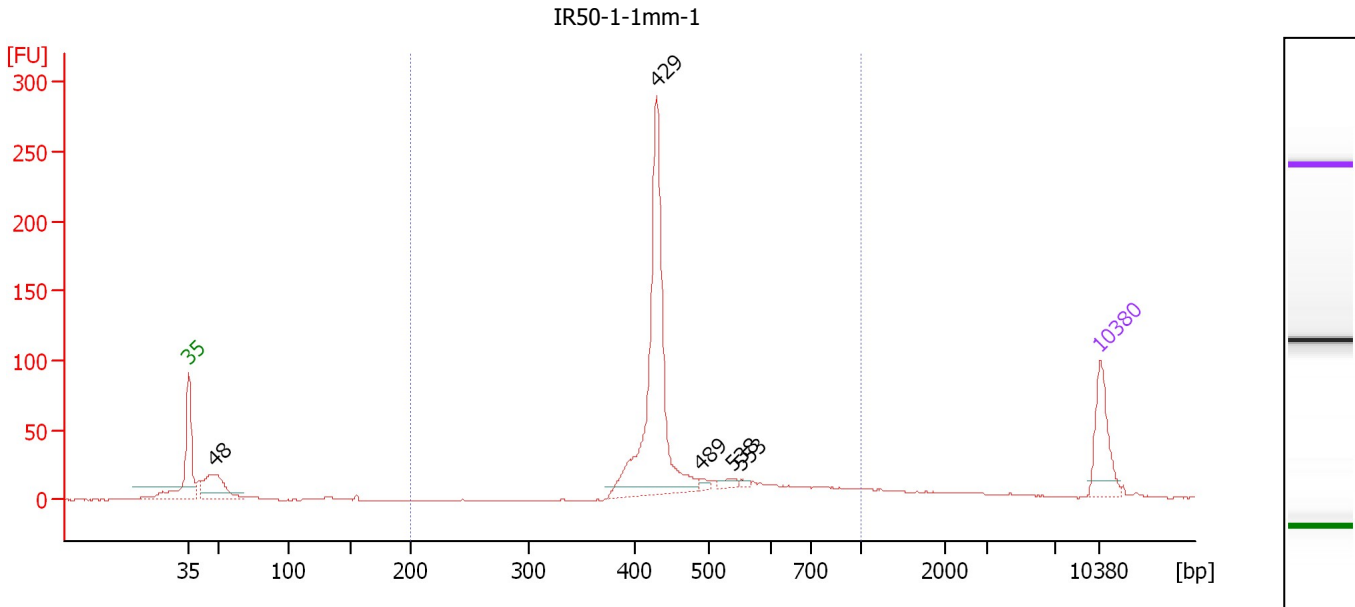
**Region table for sample 1 : Nip-LP-1-Endo-2**

From [bp]	To [bp]	Average Size [bp]	Molarity [pmol/l]	Conc. [pg/μl]	Corr. Area	% of Total	Size distribution in CV [%]	Color
200	1,000	451	2,380.6	695.49	642.2	61	15.0	Blue

Assay Class: High Sensitivity DNA Assay  
 Data Path: C:\...ents and Settings\Bioanalyzer\2012-07-30\2012-07-30\_004.xad

Created: 7/30/2012 2:26:19 PM  
 Modified: 7/30/2012 3:07:41 PM

**Electropherogram Summary Continued ...**



**Overall Results for sample 2 : IR50-1-1mm-1**

Number of peaks found: 5                      Corr. Area 1: 655.2  
 Noise: 0.2

**Peak table for sample 2 : IR50-1-1mm-1**

Peak	Size [bp]	Conc. [pg/μl]	Molarity [pmol/l]	Observations
1	35	125.00	5,411.3	Lower Marker
2	48	127.35	4,037.4	
3	429	506.03	1,785.2	
4	489	9.40	29.1	
5	538	12.83	36.1	
6	553	4.59	12.6	
7	10,380	75.00	10.9	Upper Marker

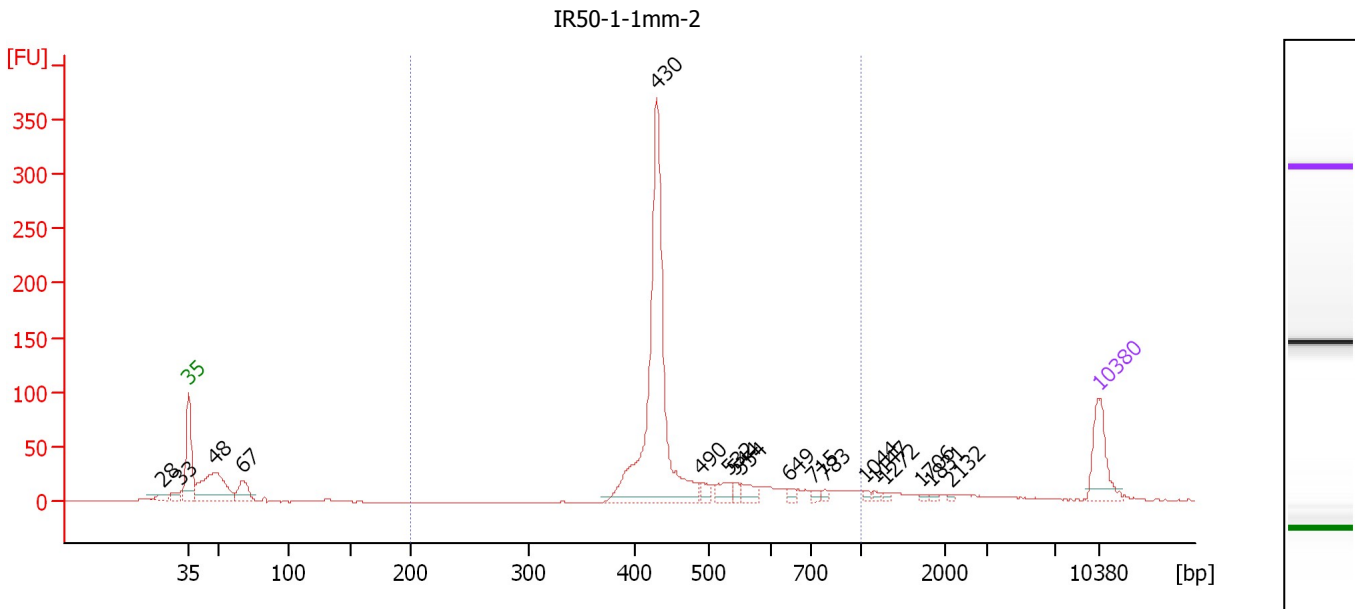
**Region table for sample 2 : IR50-1-1mm-1**

From [bp]	To [bp]	Average Size [bp]	Molarity [pmol/l]	Conc. [pg/μl]	Corr. Area	% of Total	Size distribution in CV [%]	Color
200	1,000	480	2,294.2	692.85	655.2	78	23.7	Blue

Assay Class: High Sensitivity DNA Assay  
 Data Path: C:\...ents and Settings\Bioanalyzer\2012-07-30\2012-07-30\_004.xad

Created: 7/30/2012 2:26:19 PM  
 Modified: 7/30/2012 3:07:41 PM

**Electropherogram Summary Continued ...**



**Overall Results for sample 3 : IR50-1-1mm-2**

Number of peaks found: 18      Corr. Area 1: 800.8  
 Noise: 0.3

**Peak table for sample 3 : IR50-1-1mm-2**

Peak	Size [bp]	Conc. [pg/μl]	Molarity [pmol/l]	Observations
1	28	0.00	0.0	
2	33	0.00	0.0	
3	35	125.00	5,411.3	Lower Marker
4	48	197.52	6,183.6	
5	67	60.04	1,351.5	
6	430	658.90	2,322.5	
7	490	16.74	51.7	
8	532	28.06	80.0	
9	544	13.14	36.6	
10	554	25.84	70.7	
11	649	10.60	24.7	
12	715	9.57	20.3	
13	783	7.11	13.7	
14	1,044	5.50	8.0	
15	1,147	5.37	7.1	
16	1,272	5.14	6.1	
17	1,706	3.91	3.5	
18	1,831	3.78	3.1	
19	2,132	2.81	2.0	
20	10,380	75.00	10.9	Upper Marker

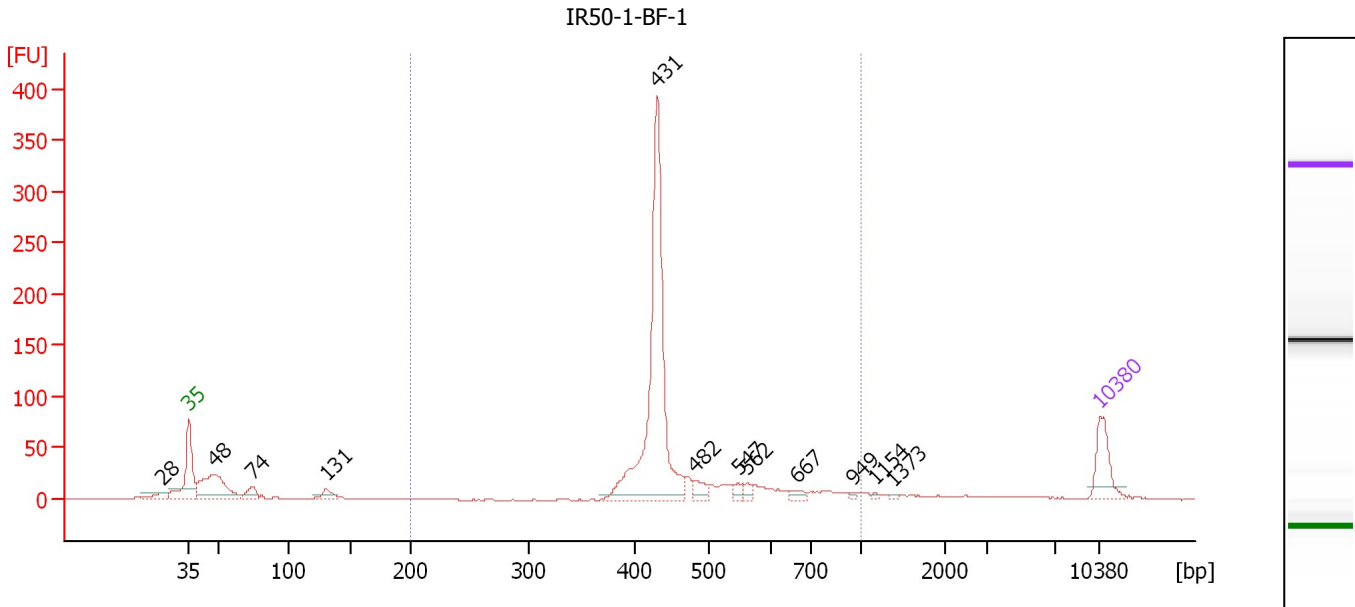
**Region table for sample 3 : IR50-1-1mm-2**

From [bp]	To [bp]	Average Size [bp]	Molarity [pmol/l]	Conc. [pg/μl]	Corr. Area	% of Total	Size distribution in CV [%]	Color
200	1,000	482	2,755.7	833.90	800.8	71	24.0	Blue

Assay Class: High Sensitivity DNA Assay  
 Data Path: C:\...ents and Settings\Bioanalyzer\2012-07-30\2012-07-30\_004.xad

Created: 7/30/2012 2:26:19 PM  
 Modified: 7/30/2012 3:07:41 PM

**Electropherogram Summary Continued ...**



**Overall Results for sample 4 : IR50-1-BF-1**

Number of peaks found: 12                      Corr. Area 1: 764.3  
 Noise: 0.4

**Peak table for sample 4 : IR50-1-BF-1**

Peak	Size [bp]	Conc. [pg/μl]	Molarity [pmol/l]	Observations
1	28	0.00	0.0	
2	35	125.00	5,411.3	Lower Marker
3	48	222.04	6,988.5	
4	74	41.77	852.8	
5	131	34.29	397.4	
6	431	732.24	2,575.5	
7	482	30.60	96.2	
8	547	17.04	47.2	
9	562	14.52	39.2	
10	667	14.25	32.3	
11	949	4.73	7.6	
12	1,154	4.10	5.4	
13	1,373	4.01	4.4	
14	10,380	75.00	10.9	Upper Marker

**Region table for sample 4 : IR50-1-BF-1**

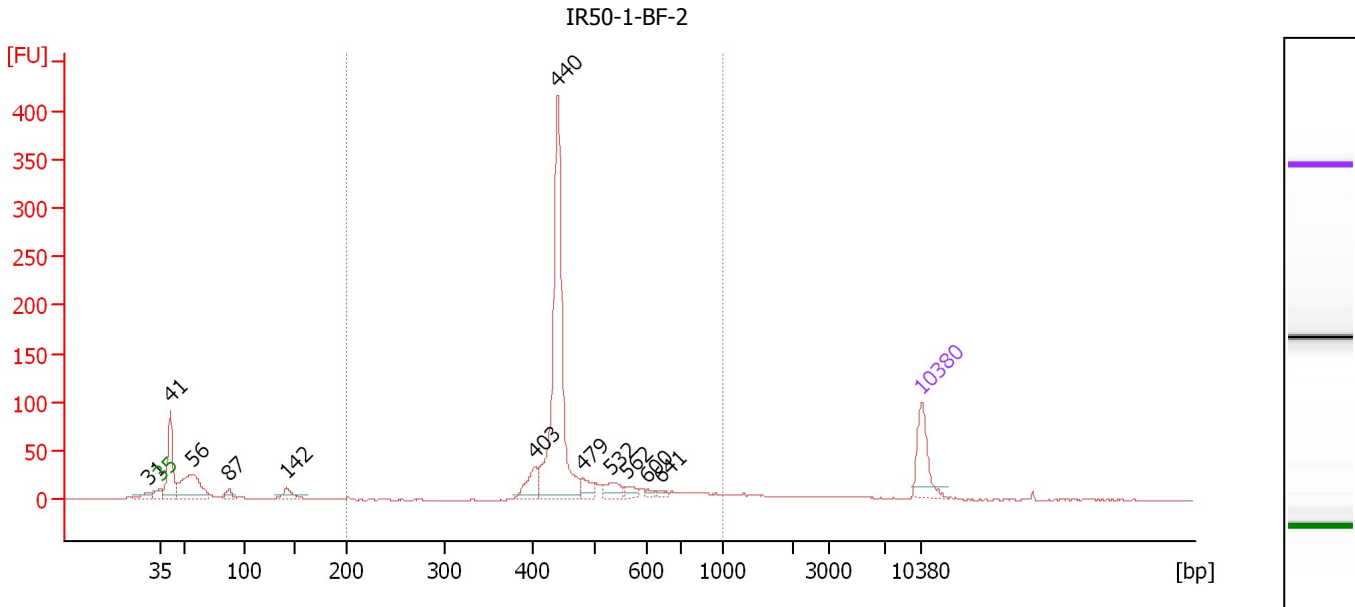
From [bp]	To [bp]	Average Size [bp]	Molarity [pmol/l]	Conc. [pg/μl]	Corr. Area	% of Total	Size distribution in CV [%]	Color
200	1,000	472	3,140.9	939.36	764.3	74	21.8	Blue



Assay Class: High Sensitivity DNA Assay  
 Data Path: C:\...ents and Settings\Bioanalyzer\2012-07-30\2012-07-30\_004.xad

Created: 7/30/2012 2:26:19 PM  
 Modified: 7/30/2012 3:07:41 PM

**Electropherogram Summary Continued ...**



**Overall Results for sample 5 : IR50-1-BF-2**

Number of peaks found: 12                      Corr. Area 1: 786.3  
 Noise: 0.3

**Peak table for sample 5 : IR50-1-BF-2**

Peak	Size [bp]	Conc. [pg/μl]	Molarity [pmol/l]	Observations
1	31	0.00	0.0	
2	35	125.00	5,411.3	Lower Marker
3	41	186.71	6,930.9	
4	56	196.48	5,304.8	
5	87	23.54	411.2	
6	142	36.66	392.2	
7	403	57.64	216.5	
8	440	571.48	1,970.1	
9	479	31.16	98.6	
10	532	34.75	99.0	
11	562	17.67	47.6	
12	600	7.42	18.7	
13	641	7.55	17.9	
14	10,380	75.00	10.9	Upper Marker

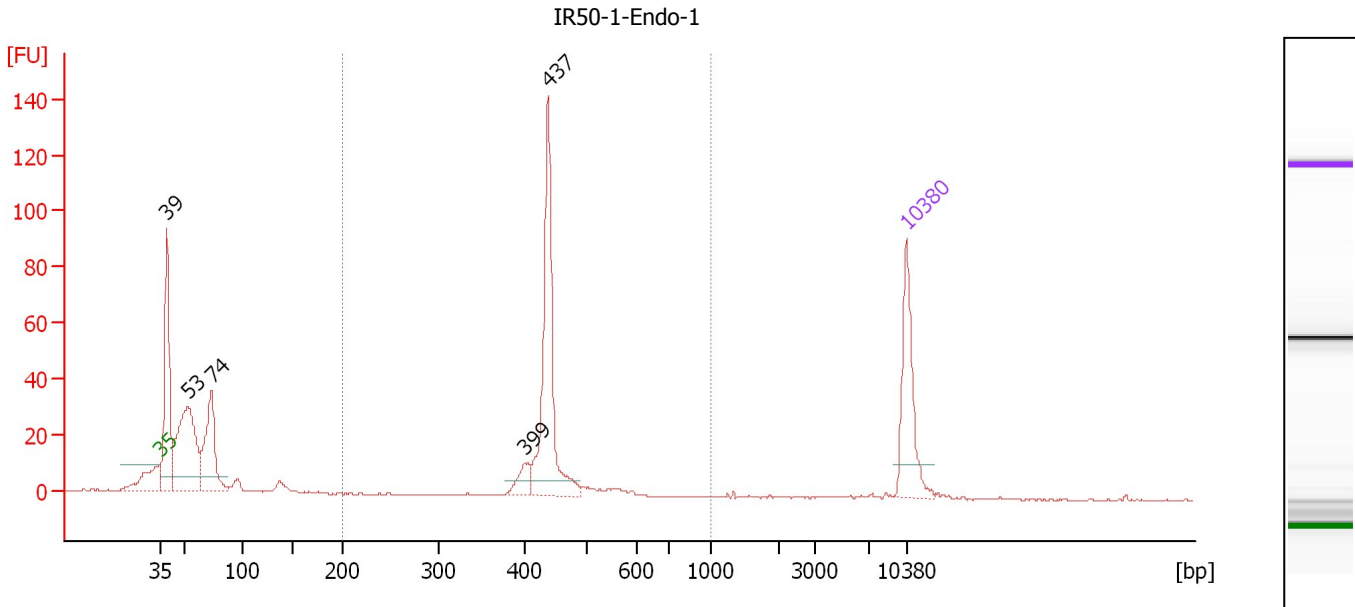
**Region table for sample 5 : IR50-1-BF-2**

From [bp]	To [bp]	Average Size [bp]	Molarity [pmol/l]	Conc. [pg/μl]	Corr. Area	% of Total	Size distribution in CV [%]	Color
200	1,000	478	2,706.9	821.21	786.3	65	20.9	Blue

Assay Class: High Sensitivity DNA Assay  
 Data Path: C:\...ents and Settings\Bioanalyzer\2012-07-30\2012-07-30\_004.xad

Created: 7/30/2012 2:26:19 PM  
 Modified: 7/30/2012 3:07:41 PM

**Electropherogram Summary Continued ...**



**Overall Results for sample 6 : IR50-1-Endo-1**

Number of peaks found: 5                      Corr. Area 1: 211.9  
 Noise: 0.2

**Peak table for sample 6 : IR50-1-Endo-1**

Peak	Size [bp]	Conc. [pg/μl]	Molarity [pmol/l]	Observations
1	35	125.00	5,411.3	Lower Marker
2	39	203.67	7,855.0	
3	53	226.96	6,490.4	
4	74	133.27	2,741.6	
5	399	24.50	93.0	
6	437	206.12	714.0	
7	10,380	75.00	10.9	Upper Marker

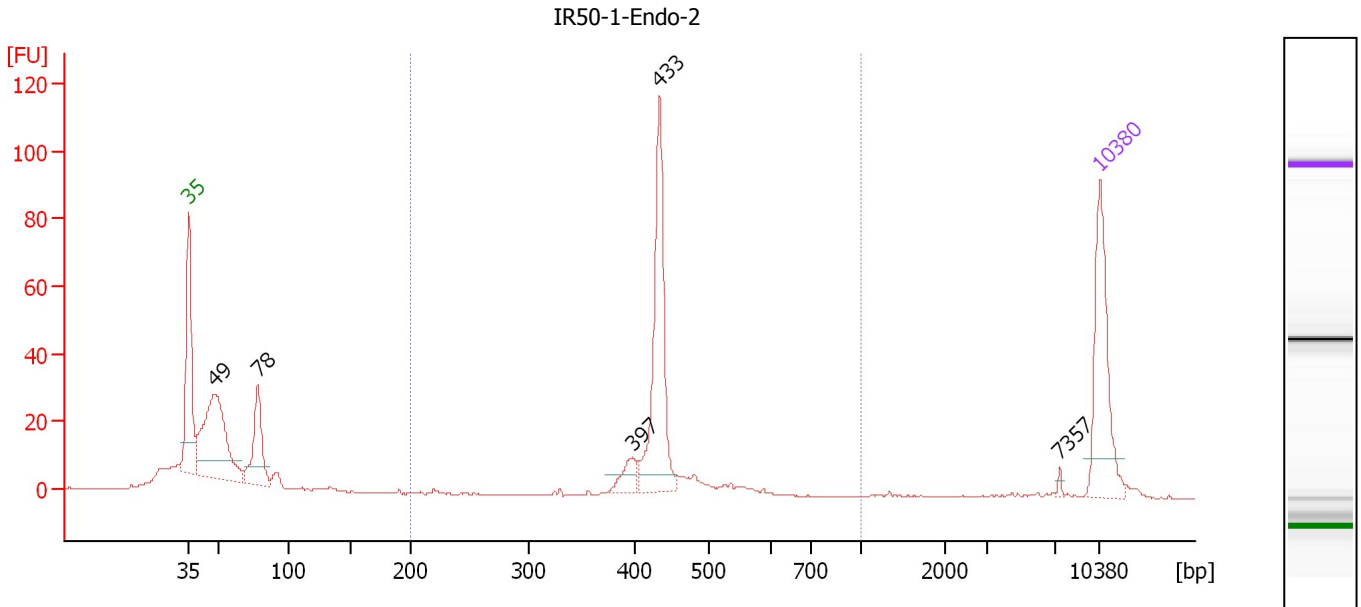
**Region table for sample 6 : IR50-1-Endo-1**

From [bp]	To [bp]	Average Size [bp]	Molarity [pmol/l]	Conc. [pg/μl]	Corr. Area	% of Total	Size distribution in CV [%]	Color
200	1,000	442	838.9	243.12	211.9	37	7.6	Blue

Assay Class: High Sensitivity DNA Assay  
 Data Path: C:\...ents and Settings\Bioanalyzer\2012-07-30\2012-07-30\_004.xad

Created: 7/30/2012 2:26:19 PM  
 Modified: 7/30/2012 3:07:41 PM

**Electropherogram Summary Continued ...**



**Overall Results for sample 7 : IR50-1-Endo-2**

Number of peaks found: 5                      Corr. Area 1: 181.0  
 Noise: 0.1

**Peak table for sample 7 : IR50-1-Endo-2**

Peak	Size [bp]	Conc. [pg/μl]	Molarity [pmol/l]	Observations
1	35	125.00	5,411.3	Lower Marker
2	49	188.25	5,880.6	
3	78	77.22	1,499.6	
4	397	20.13	76.7	
5	433	149.46	522.9	
6	7,357	2.06	0.4	
7	10,380	75.00	10.9	Upper Marker

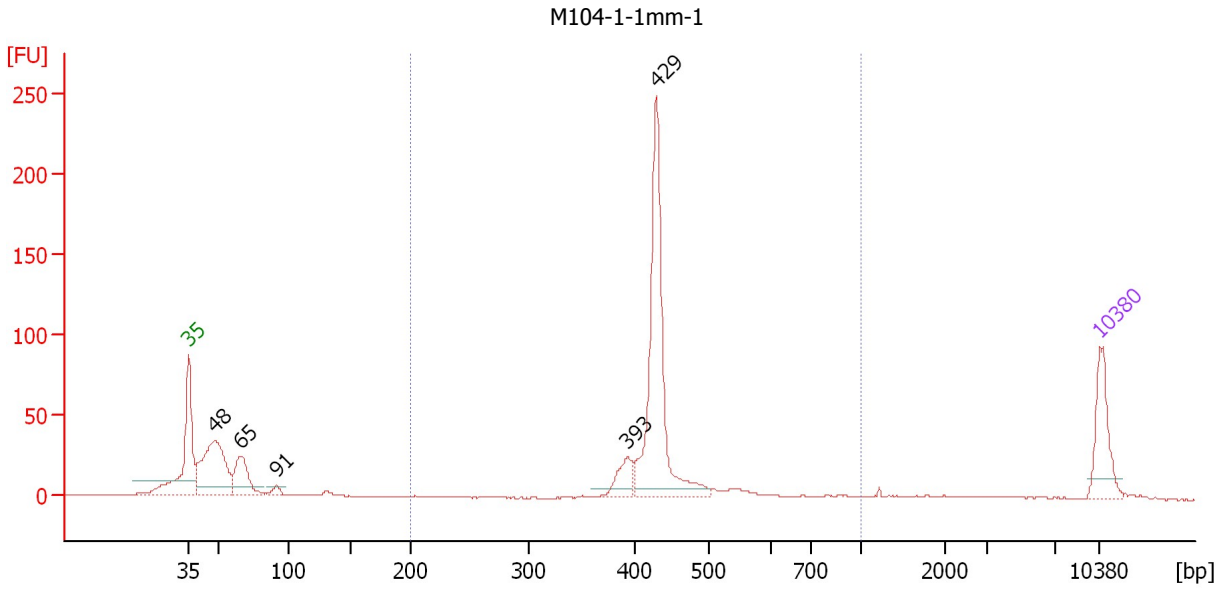
**Region table for sample 7 : IR50-1-Endo-2**

From [bp]	To [bp]	Average Size [bp]	Molarity [pmol/l]	Conc. [pg/μl]	Corr. Area	% of Total	Size distribution in CV [%]	Color
200	1,000	437	710.8	203.62	181.0	41	8.2	Blue

Assay Class: High Sensitivity DNA Assay  
 Data Path: C:\...ents and Settings\Bioanalyzer\2012-07-30\2012-07-30\_004.xad

Created: 7/30/2012 2:26:19 PM  
 Modified: 7/30/2012 3:07:41 PM

**Electropherogram Summary Continued ...**



**Overall Results for sample 8 : M104-1-1mm-1**

Number of peaks found: 5                      Corr. Area 1: 434.2  
 Noise: 0.2

**Peak table for sample 8 : M104-1-1mm-1**

Peak	Size [bp]	Conc. [pg/μl]	Molarity [pmol/l]	Observations
1	35	125.00	5,411.3	Lower Marker
2	48	254.66	7,991.5	
3	65	105.15	2,444.8	
4	91	14.21	235.9	
5	393	49.01	189.0	
6	429	400.53	1,415.5	
7	10,380	75.00	10.9	Upper Marker

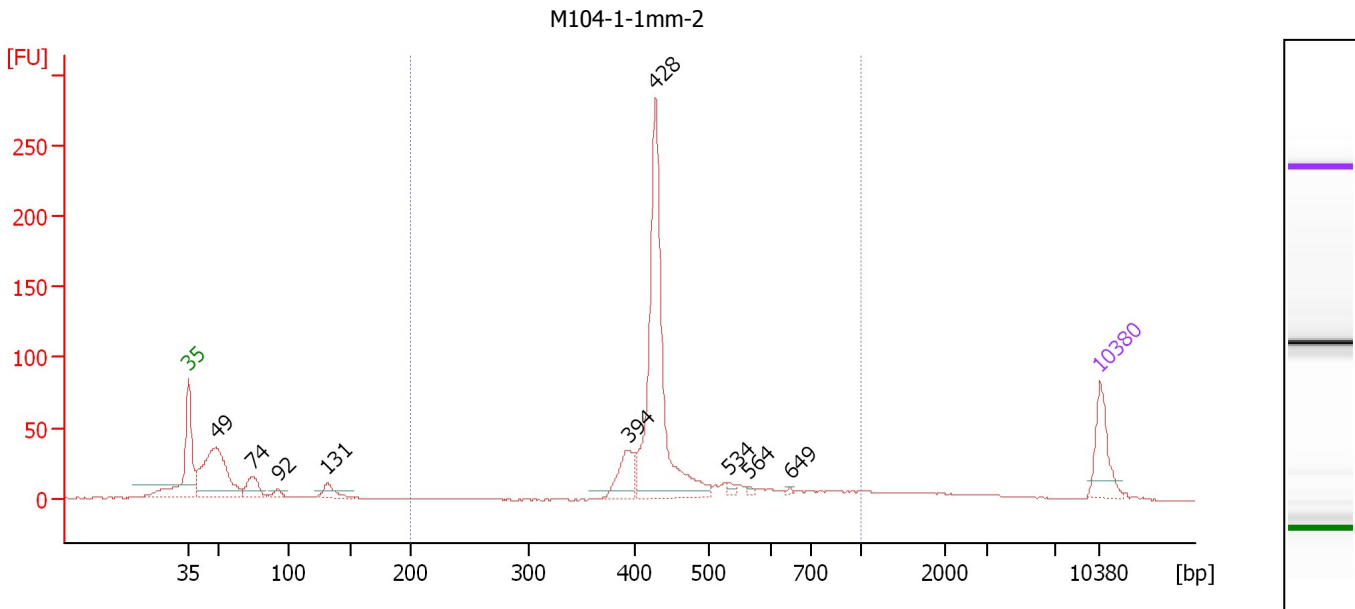
**Region table for sample 8 : M104-1-1mm-1**

From [bp]	To [bp]	Average Size [bp]	Molarity [pmol/l]	Conc. [pg/μl]	Corr. Area	% of Total	Size distribution in CV [%]	Color
200	1,000	442	1,720.0	493.36	434.2	61	14.8	Blue

Assay Class: High Sensitivity DNA Assay  
 Data Path: C:\...ents and Settings\Bioanalyzer\2012-07-30\2012-07-30\_004.xad

Created: 7/30/2012 2:26:19 PM  
 Modified: 7/30/2012 3:07:41 PM

**Electropherogram Summary Continued ...**



**Overall Results for sample 9 : M104-1-1mm-2**

Number of peaks found: 9                      Corr. Area 1: 620.6  
 Noise: 0.2

**Peak table for sample 9 : M104-1-1mm-2**

Peak	Size [bp]	Conc. [pg/μl]	Molarity [pmol/l]	Observations
1	35	125.00	5,411.3	Lower Marker
2	49	338.91	10,529.9	
3	74	66.54	1,368.0	
4	92	17.45	287.7	
5	131	40.26	464.6	
6	394	87.43	336.3	
7	428	583.69	2,066.4	
8	534	9.19	26.1	
9	564	5.46	14.7	
10	649	2.81	6.6	
11	10,380	75.00	10.9	Upper Marker

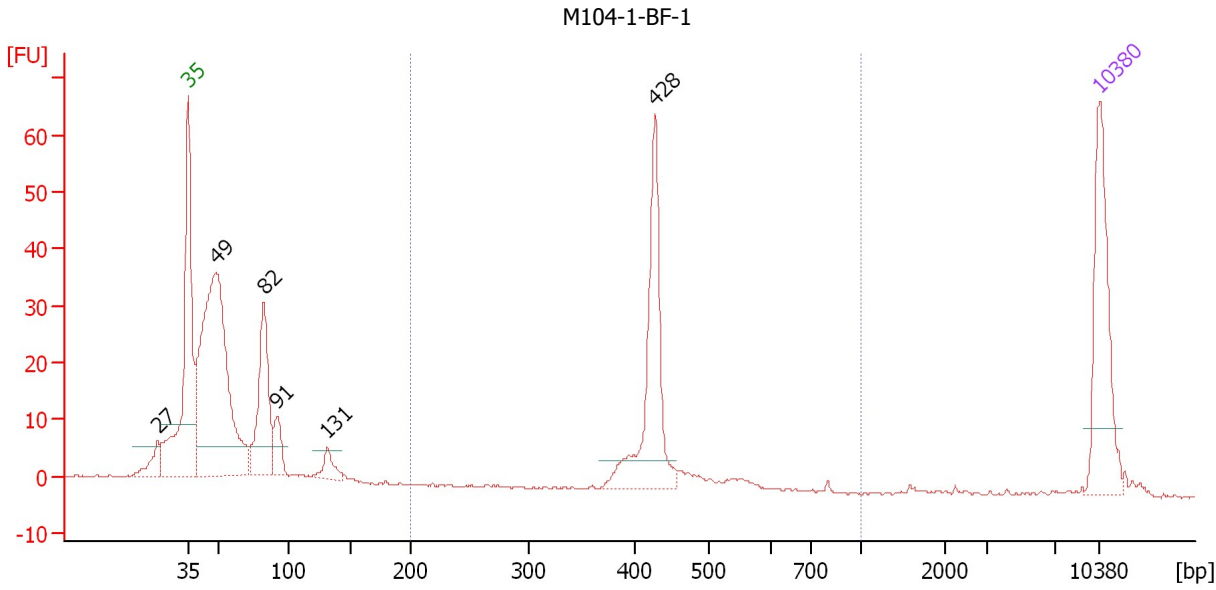
**Region table for sample 9 : M104-1-1mm-2**

From [bp]	To [bp]	Average Size [bp]	Molarity [pmol/l]	Conc. [pg/μl]	Corr. Area	% of Total	Size distribution in CV [%]	Color
200	1,000	470	2,810.8	832.89	620.6	63	23.2	Blue

Assay Class: High Sensitivity DNA Assay  
 Data Path: C:\...ents and Settings\Bioanalyzer\2012-07-30\2012-07-30\_004.xad

Created: 7/30/2012 2:26:19 PM  
 Modified: 7/30/2012 3:07:41 PM

**Electropherogram Summary Continued ...**



**Overall Results for sample 10 : M104-1-BF-1**

Number of peaks found: 6                      Corr. Area 1: 102.2  
 Noise: 0.2

**Peak table for sample 10 : M104-1-BF-1**

Peak	Size [bp]	Conc. [pg/μl]	Molarity [pmol/l]	Observations
1	27	0.00	0.0	
2	35	125.00	5,411.3	Lower Marker
3	49	371.34	11,490.9	
4	82	115.13	2,124.3	
5	91	25.70	426.2	
6	131	17.33	200.1	
7	428	132.83	470.5	
8	10,380	75.00	10.9	Upper Marker

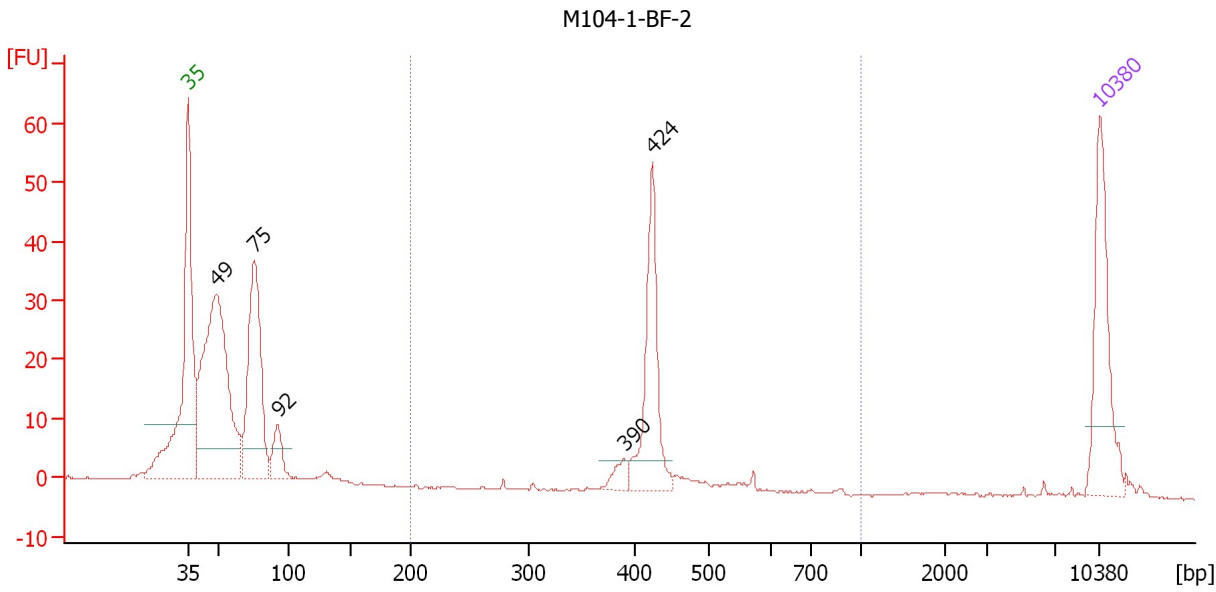
**Region table for sample 10 : M104-1-BF-1**

From [bp]	To [bp]	Average Size [bp]	Molarity [pmol/l]	Conc. [pg/μl]	Corr. Area	% of Total	Size distribution in CV [%]	Color
200	1,000	432	501.8	142.24	102.2	25	8.9	Blue

Assay Class: High Sensitivity DNA Assay  
 Data Path: C:\...ents and Settings\Bioanalyzer\2012-07-30\2012-07-30\_004.xad

Created: 7/30/2012 2:26:19 PM  
 Modified: 7/30/2012 3:07:41 PM

**Electropherogram Summary Continued ...**



**Overall Results for sample 11 : M104-1-BF-2**

Number of peaks found: 5                      Corr. Area 1: 83.2  
 Noise: 0.1

**Peak table for sample 11 : M104-1-BF-2**

Peak	Size [bp]	Conc. [pg/μl]	Molarity [pmol/l]	Observations
1	35	125.00	5,411.3	Lower Marker
2	49	347.17	10,701.1	
3	75	197.03	3,956.5	
4	92	33.51	550.6	
5	390	13.15	51.1	
6	424	111.72	399.1	
7	10,380	75.00	10.9	Upper Marker

**Region table for sample 11 : M104-1-BF-2**

From [bp]	To [bp]	Average Size [bp]	Molarity [pmol/l]	Conc. [pg/μl]	Corr. Area	% of Total	Size distribution in CV [%]	Color
200	1,000	427	471.0	131.94	83.2	24	8.4	Blue

Assay Class: High Sensitivity DNA Assay  
Data Path: C:\...ents and Settings\Bioanalyzer\2012-07-30\2012-07-30\_004.xad

Created: 7/30/2012 2:26:19 PM  
Modified: 7/30/2012 3:07:41 PM

**Gel Image**

