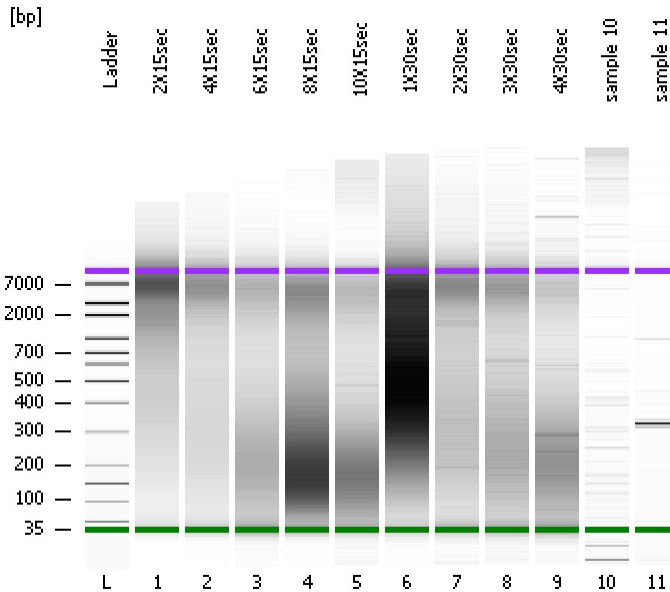


Assay Class: High Sensitivity DNA Assay
Data Path: C:\...ents and Settings\Bioanalyzer\2012-07-31\2012-07-31_001.xad

Created: 7/31/2012 11:20:24 AM
Modified: 7/31/2012 12:05:13 PM

Electrophoresis File Run Summary



Instrument Information:

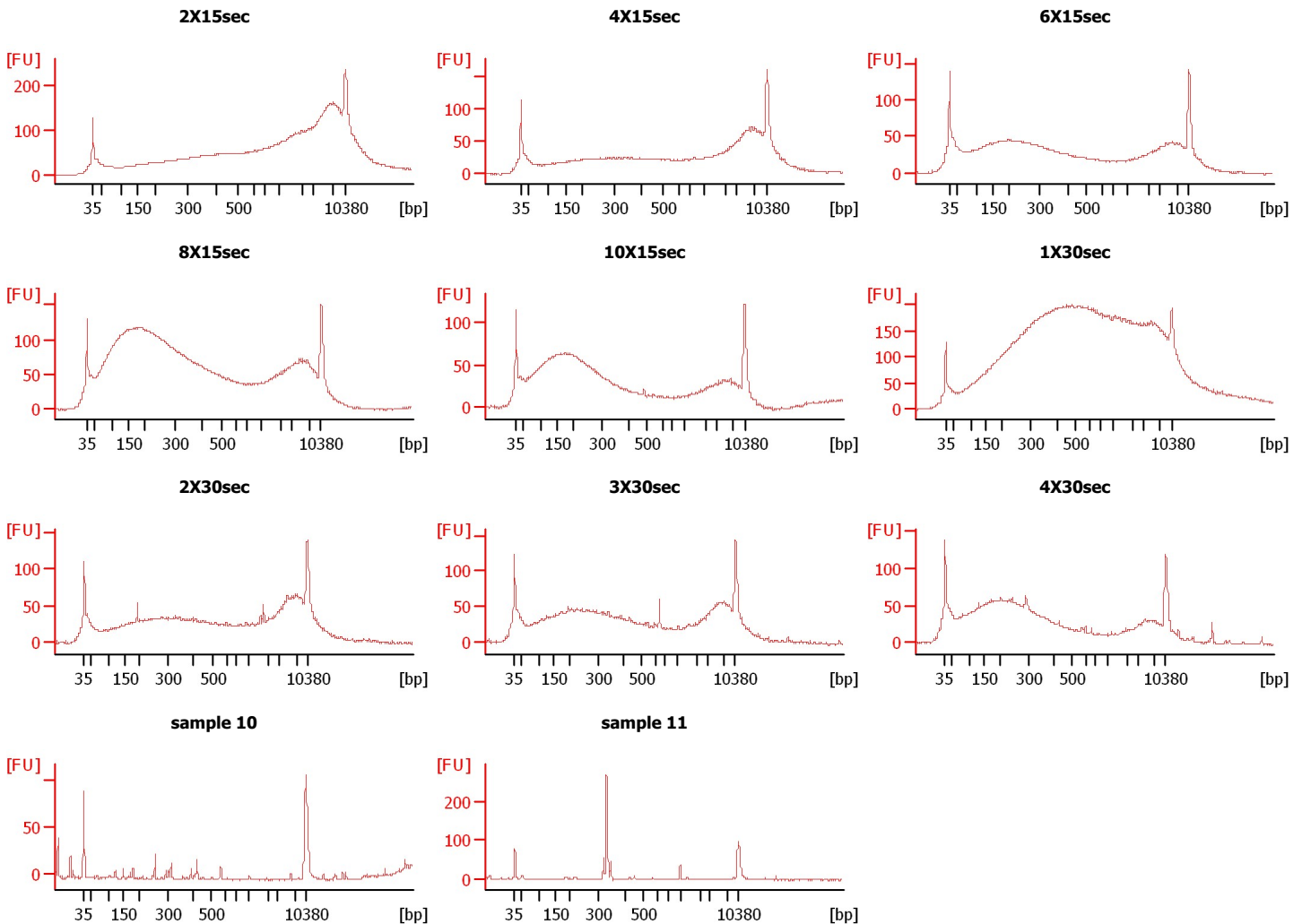
Instrument Name: DE13701086 Firmware: C.01.069
Serial#: DE13701086 Type: G2938B

Assay Information:

Assay Origin Path: C:\Program Files\Agilent\2100 bioanalyzer\2100 expert\assays\dsDNA\High Sensitivity DNA.xsy
Assay Class: High Sensitivity DNA Assay
Version: 1.03
Assay Comments: Copyright © 2003-2010 Agilent Technologies

Chip Information:

Chip Lot #: Reagent Kit Lot #:
Chip Comments:



Assay Class: High Sensitivity DNA Assay
 Data Path: C:\...ents and Settings\Bioanalyzer\2012-07-31\2012-07-31_001.xad

Created: 7/31/2012 11:20:24 AM
 Modified: 7/31/2012 12:05:13 PM

Electrophoresis File Run Summary (Chip Summary)

Sample Name	Sample Comment	Rest. Digest	Status	Observation	Result Label	Result Color
2X15sec		<input type="checkbox"/>	✓			
4X15sec		<input type="checkbox"/>	✓			
6X15sec		<input type="checkbox"/>	✓			
8X15sec		<input type="checkbox"/>	✓			
10X15sec		<input type="checkbox"/>	✓			
1X30sec		<input type="checkbox"/>	✓			
2X30sec		<input type="checkbox"/>	✓			
3X30sec		<input type="checkbox"/>	✓			
4X30sec		<input type="checkbox"/>	✓			
sample 10		<input type="checkbox"/>	✓			
sample 11		<input type="checkbox"/>	✓			
Ladder		<input type="checkbox"/>	✓			

Chip Lot #

Reagent Kit Lot #

Chip Comments :

Assay Class: High Sensitivity DNA Assay
Data Path: C:\...ents and Settings\Bioanalyzer\2012-07-31\2012-07-31_001.xad

Created: 7/31/2012 11:20:24 AM
Modified: 7/31/2012 12:05:13 PM

Electrophoresis Assay Details

General Analysis Settings

Number of Available Sample and Ladder Wells (Max.) : 12
Minimum Visible Range [s] : 32
Maximum Visible Range [s] : 138
Start Analysis Time Range [s] : 33
End Analysis Time Range [s] : 137.5
Ladder Concentration [pg/μl] : 1950
Uses Standard Area for Ladder Fragments
Lower Marker Concentration [pg/μl] : 125
Upper Marker Concentration [pg/μl] : 75
Used Upper Marker for Quantitation
Standard Curve Fit is Point to Point
Show Data Aligned to Lower and Upper Marker

Integrator Settings

Integration Start Time [s] : 33.05
Integration End Time [s] : 137
Slope Threshold : 0.8
Height Threshold [FU] : 5
Area Threshold : 0.1
Width Threshold [s] : 0.6
Baseline Plateau [s] : 0.5

Filter Settings

Filter Width [s] : 0.5
Polynomial Order : 4

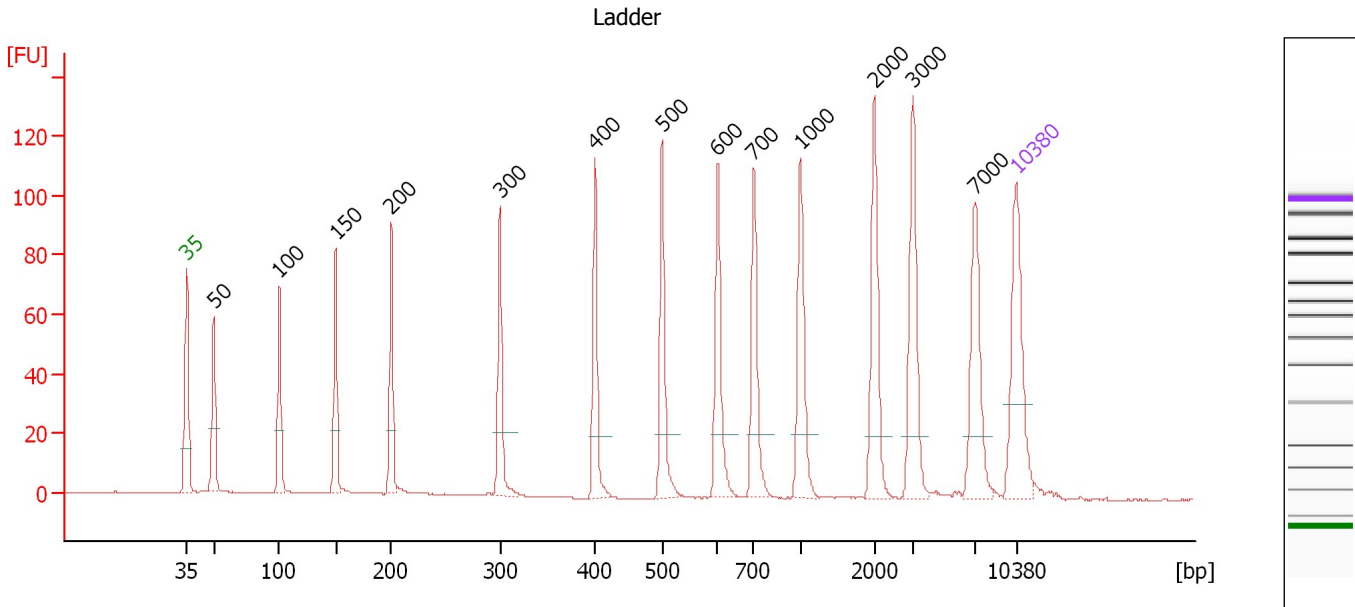
Ladder

Ladder Peak	Size	Area
1	35	160
2	50	210
3	100	208
4	150	221
5	200	242
6	300	270
7	400	305
8	500	306
9	600	336
10	700	321
11	1000	366
12	2000	413
13	3000	411
14	7000	400
15	10380	214

Assay Class: High Sensitivity DNA Assay
 Data Path: C:\...ents and Settings\Bioanalyzer\2012-07-31\2012-07-31_001.xad

Created: 7/31/2012 11:20:24 AM
 Modified: 7/31/2012 12:05:13 PM

Electropherogram Summary



Overall Results for Ladder

Noise: 0.1

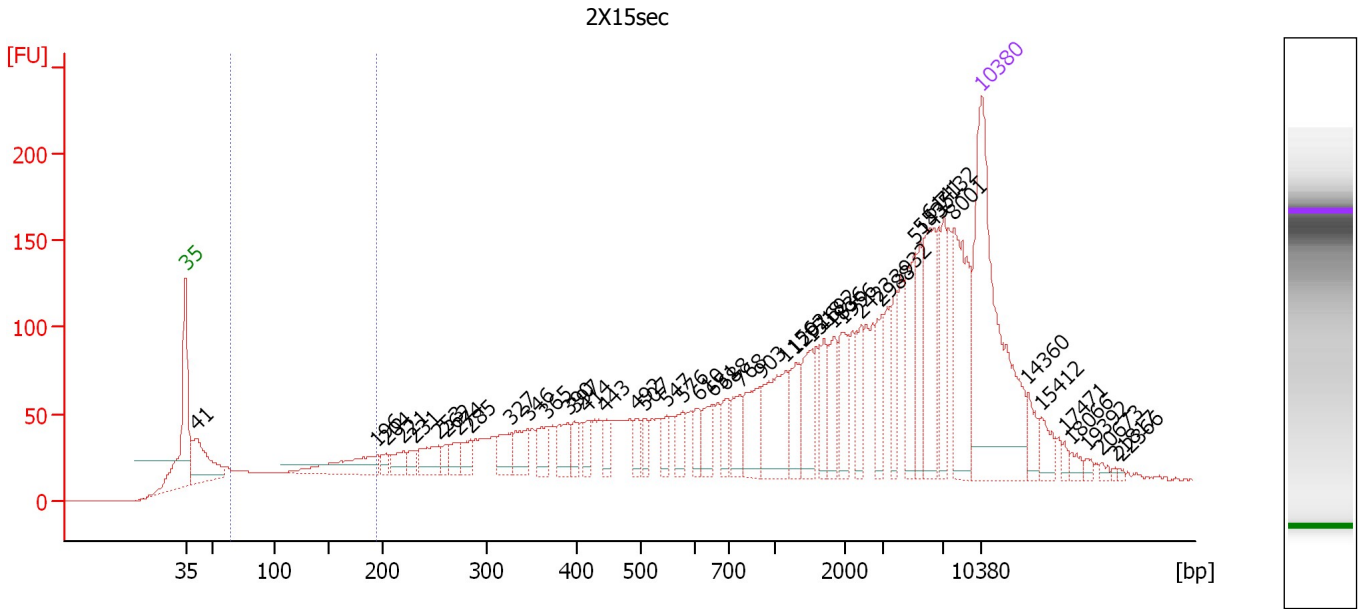
Peak table for Ladder

Peak	Size [bp]	Conc. [pg/μl]	Molarity [pmol/l]	Observations
1	35	125.00	5,411.3	Lower Marker
2	50	150.00	4,545.5	Ladder Peak
3	100	150.00	2,272.7	Ladder Peak
4	150	150.00	1,515.2	Ladder Peak
5	200	150.00	1,136.4	Ladder Peak
6	300	150.00	757.6	Ladder Peak
7	400	150.00	568.2	Ladder Peak
8	500	150.00	454.5	Ladder Peak
9	600	150.00	378.8	Ladder Peak
10	700	150.00	324.7	Ladder Peak
11	1,000	150.00	227.3	Ladder Peak
12	2,000	150.00	113.6	Ladder Peak
13	3,000	150.00	75.8	Ladder Peak
14	7,000	150.00	32.5	Ladder Peak
15	10,380	75.00	10.9	Upper Marker

Assay Class: High Sensitivity DNA Assay
 Data Path: C:\...ents and Settings\Bioanalyzer\2012-07-31\2012-07-31_001.xad

Created: 7/31/2012 11:20:24 AM
 Modified: 7/31/2012 12:05:13 PM

Electropherogram Summary Continued ...



Overall Results for sample 1 : 2X15sec

Number of peaks found: 47 Corr. Area 1: 430.3
 Noise: 0.2

Peak table for sample 1 : 2X15sec


Peak	Size [bp]	Conc. [pg/μl]	Molarity [pmol/l]	Observations
1	35	125.00	5,411.3	Lower Marker
2	41	35.49	1,297.8	
3	196	24.12	186.7	
4	204	4.32	32.1	
5	221	8.39	57.6	
6	231	5.12	33.5	
7	253	12.55	75.0	
8	262	4.29	24.8	
9	274	6.85	37.9	
10	285	7.44	39.6	
11	327	11.21	52.0	
12	346	12.85	56.3	
13	365	10.36	43.0	
14	390	11.77	45.7	
15	397	6.03	23.0	
16	414	6.09	22.3	
17	443	5.67	19.4	
18	492	6.41	19.8	
19	507	5.47	16.4	
20	547	6.19	17.1	
21	576	7.95	20.9	
22	610	6.47	16.1	
23	651	9.91	23.1	
24	688	8.46	18.6	
25	768	11.51	22.7	
26	903	16.42	27.6	

Assay Class: High Sensitivity DNA Assay
 Data Path: C:\...ents and Settings\Bioanalyzer\2012-07-31\2012-07-31_001.xad


Created: 7/31/2012 11:20:24 AM
 Modified: 7/31/2012 12:05:13 PM

Electropherogram Summary Continued ...

... Peak table for sample 1 : 2X15sec

Peak	Size [bp]	Conc. [pg/µl]	Molarity [pmol/l]	Observations
27	1,156	26.57	34.8	
28	1,292	13.14	15.4	
29	1,518	15.80	15.8	
30	1,692	9.63	8.6	
31	1,836	11.53	9.5	
32	1,956	13.07	10.1	
33	2,423	9.31	5.8	
34	2,988	11.95	6.1	
35	3,932	11.09	4.3	
36	5,143	19.41	5.7	
37	5,535	13.02	3.6	
38	6,141	26.63	6.6	
39	7,132	15.22	3.2	
40	8,001	34.63	6.6	
41	 10,380	75.00	10.9	Upper Marker
42	14,360	0.00	0.0	
43	15,412	0.00	0.0	
44	17,471	0.00	0.0	
45	18,066	0.00	0.0	
46	19,392	0.00	0.0	
47	20,673	0.00	0.0	
48	21,817	0.00	0.0	
49	22,366	0.00	0.0	

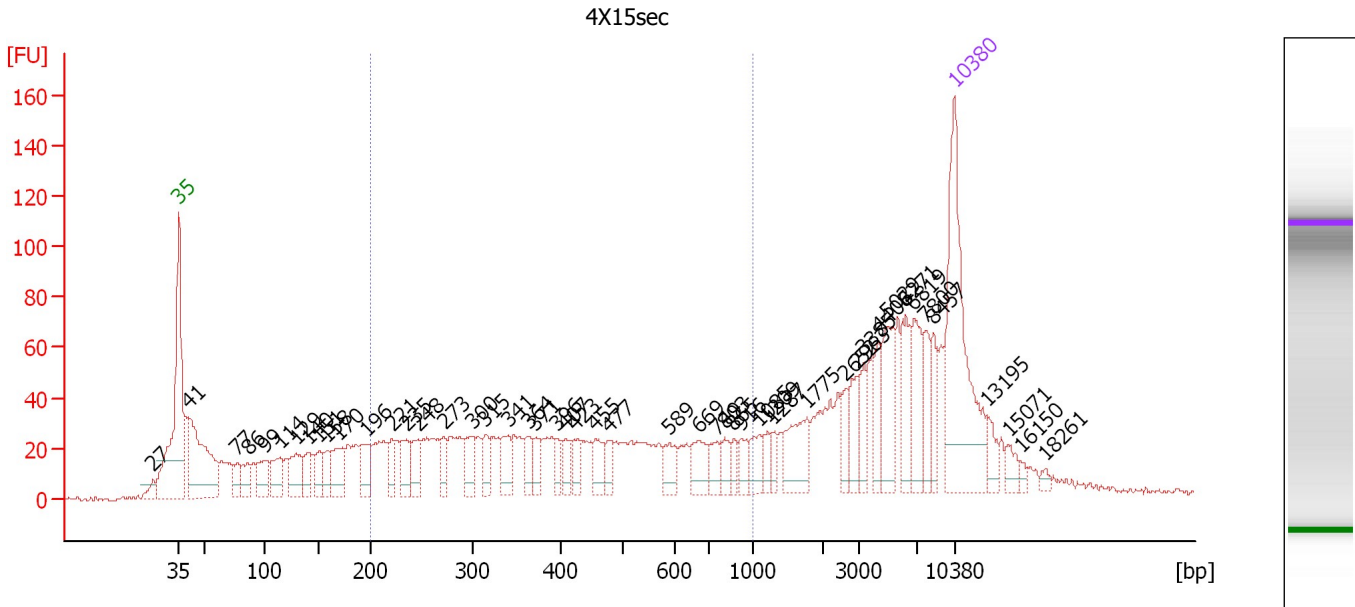
Region table for sample 1 : 2X15sec

From [bp]	To [bp]	Average Size [bp]	Molarity [pmol/l]	Conc. [pg/µl]	Corr. Area	% of Total	Size distribution in CV [%]	Color
65	196	134	1,712.9	133.69	430.3	10	29.2	

Assay Class: High Sensitivity DNA Assay
 Data Path: C:\...ents and Settings\Bioanalyzer\2012-07-31\2012-07-31_001.xad

Created: 7/31/2012 11:20:24 AM
 Modified: 7/31/2012 12:05:13 PM

Electropherogram Summary Continued ...



Overall Results for sample 2 : 4X15sec

Number of peaks found: 49 Corr. Area 1: 1,044.6
 Noise: 0.9

Peak table for sample 2 : 4X15sec


Peak	Size [bp]	Conc. [pg/μl]	Molarity [pmol/l]	Observations
1	27	0.00	0.0	
2	35	125.00	5,411.3	Lower Marker
3	41	92.67	3,427.1	
4	77	11.11	219.6	
5	86	14.86	262.7	
6	99	18.36	281.6	
7	114	21.34	284.4	
8	129	23.02	270.8	
9	140	13.97	151.3	
10	151	13.02	131.0	
11	158	12.13	116.2	
12	170	22.55	201.5	
13	196	19.51	151.0	
14	221	12.18	83.4	
15	235	16.17	104.0	
16	248	14.76	90.4	
17	273	11.00	61.1	
18	300	16.83	85.0	
19	315	11.67	56.1	
20	341	15.33	68.2	
21	364	10.96	45.6	
22	371	9.24	37.8	
23	396	7.93	30.3	
24	407	10.10	37.6	
25	423	9.97	35.7	
26	455	13.91	46.3	

Assay Class: High Sensitivity DNA Assay
 Data Path: C:\...ents and Settings\Bioanalyzer\2012-07-31\2012-07-31_001.xad


Created: 7/31/2012 11:20:24 AM
 Modified: 7/31/2012 12:05:13 PM

Electropherogram Summary Continued ...

... Peak table for sample 2 : 4X15sec

Peak	Size [bp]	Conc. [pg/μl]	Molarity [pmol/l]	Observations
27	477	8.20	26.1	
28	589	11.52	29.6	
29	669	14.70	33.3	
30	749	9.92	20.1	
31	803	8.32	15.7	
32	865	5.50	9.6	
33	916	7.44	12.3	
34	1,085	11.02	15.4	
35	1,209	5.90	7.4	
36	1,287	5.50	6.5	
37	1,775	22.58	19.3	
38	2,652	8.59	4.9	
39	2,963	12.64	6.5	
40	3,385	10.88	4.9	
41	4,408	13.53	4.7	
42	5,029	23.69	7.1	
43	6,271	17.80	4.3	
44	6,819	23.25	5.2	
45	7,800	12.57	2.4	
46	8,457	10.91	2.0	
47	 10,380	75.00	10.9	Upper Marker
48	13,195	0.00	0.0	
49	15,071	0.00	0.0	
50	16,150	0.00	0.0	
51	18,261	0.00	0.0	

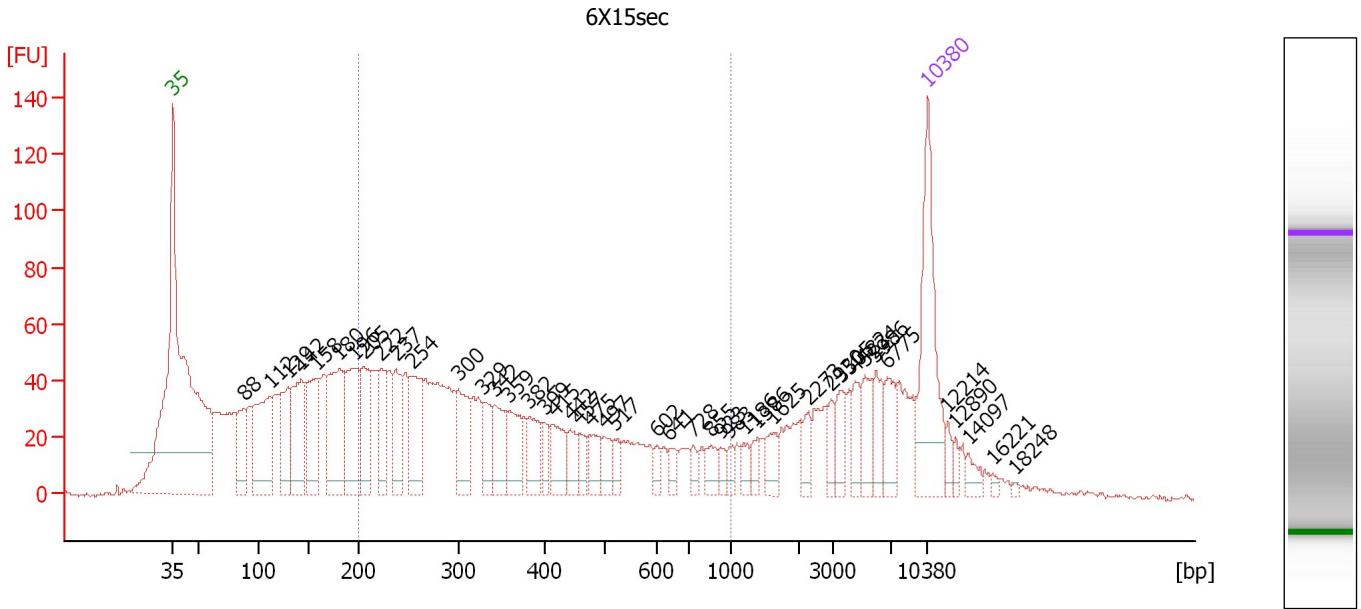
Region table for sample 2 : 4X15sec

From [bp]	To [bp]	Average Size [bp]	Molarity [pmol/l]	Conc. [pg/μl]	Corr. Area	% of Total	Size distribution in CV [%]	Color
200	1,000	444	2,058.2	473.51	1,044.6	41	43.5	

Assay Class: High Sensitivity DNA Assay
 Data Path: C:\...ents and Settings\Bioanalyzer\2012-07-31\2012-07-31_001.xad

Created: 7/31/2012 11:20:24 AM
 Modified: 7/31/2012 12:05:13 PM

Electropherogram Summary Continued ...



Overall Results for sample 3 : 6X15sec

Number of peaks found: 44 Corr. Area 1: 1,349.1
 Noise: 0.8

Peak table for sample 3 : 6X15sec


Peak	Size [bp]	Conc. [pg/μl]	Molarity [pmol/l]	Observations
1	35	125.00	5,411.3	Lower Marker
2	88	43.04	738.8	
3	112	103.18	1,398.1	
4	129	59.16	692.5	
5	142	75.96	808.2	
6	158	74.61	714.9	
7	180	94.60	794.8	
8	196	83.14	642.1	
9	205	53.38	395.0	
10	222	34.47	235.3	
11	237	44.84	286.6	
12	254	59.85	356.5	
13	300	49.51	249.9	
14	329	26.76	123.2	
15	342	36.97	163.7	
16	359	36.92	155.6	
17	382	30.55	121.1	
18	399	13.89	52.7	
19	415	26.61	97.1	
20	442	16.14	55.3	
21	457	14.52	48.1	
22	475	18.82	60.1	
23	497	14.74	44.9	
24	517	10.38	30.4	
25	602	6.94	17.5	
26	641	9.30	22.0	

Assay Class: High Sensitivity DNA Assay
 Data Path: C:\...ents and Settings\Bioanalyzer\2012-07-31\2012-07-31_001.xad


Created: 7/31/2012 11:20:24 AM
 Modified: 7/31/2012 12:05:13 PM

Electropherogram Summary Continued ...

... Peak table for sample 3 : 6X15sec

Peak	Size [bp]	Conc. [pg/μl]	Molarity [pmol/l]	Observations
27	728	8.32	17.3	
28	855	11.75	20.8	
29	923	7.38	12.1	
30	983	6.45	9.9	
31	1,186	8.40	10.7	
32	1,386	8.68	9.5	
33	1,625	13.78	12.8	
34	2,273	11.18	7.5	
35	2,930	10.06	5.2	
36	3,505	15.59	6.7	
37	4,482	14.37	4.9	
38	5,234	18.55	5.4	
39	5,986	19.55	4.9	
40	6,775	20.68	4.6	
41	 10,380	75.00	10.9	Upper Marker
42	12,214	0.00	0.0	
43	12,890	0.00	0.0	
44	14,097	0.00	0.0	
45	16,221	0.00	0.0	
46	18,248	0.00	0.0	

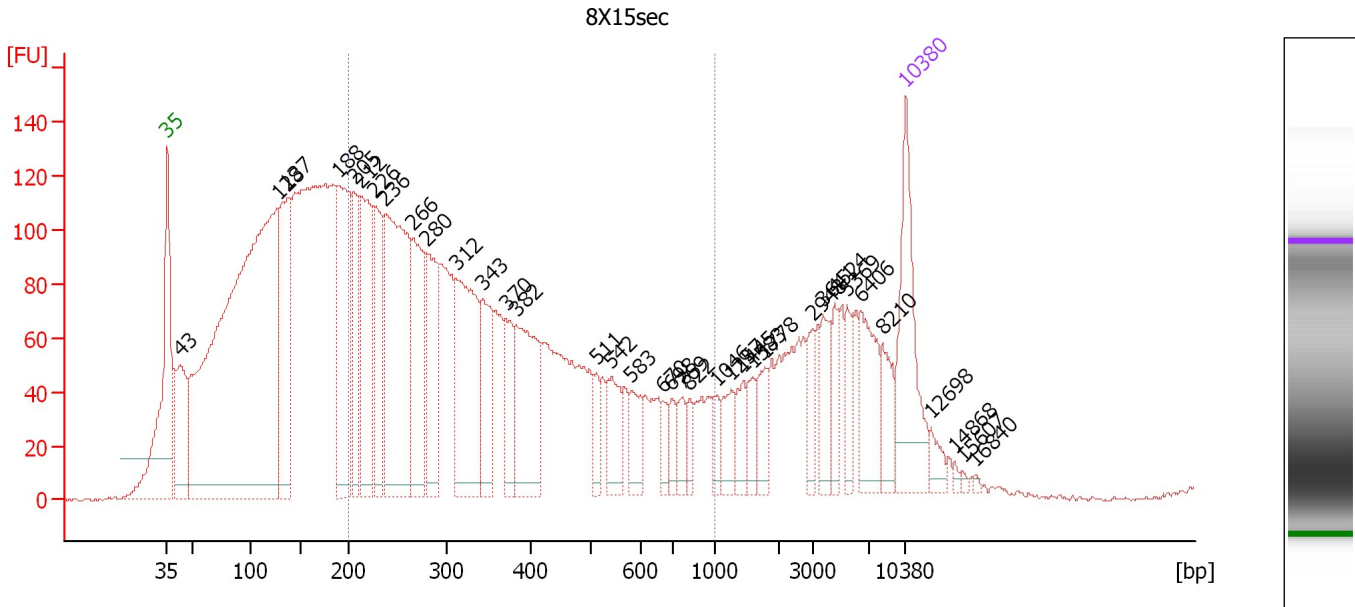
Region table for sample 3 : 6X15sec

From [bp]	To [bp]	Average Size [bp]	Molarity [pmol/l]	Conc. [pg/μl]	Corr. Area	% of Total	Size distribution in CV [%]	Color
200	1,000	390	4,317.6	894.96	1,349.1	47	45.0	

Assay Class: High Sensitivity DNA Assay
 Data Path: C:\...ents and Settings\Bioanalyzer\2012-07-31\2012-07-31_001.xad

Created: 7/31/2012 11:20:24 AM
 Modified: 7/31/2012 12:05:13 PM

Electropherogram Summary Continued ...



Overall Results for sample 4 : 8X15sec

Number of peaks found: 36 Corr. Area 1: 3,101.8
 Noise: 0.8

Peak table for sample 4 : 8X15sec

Peak	Size [bp]	Conc. [pg/µl]	Molarity [pmol/l]	Observations
1	35	125.00	5,411.3	Lower Marker
2	43	114.67	4,078.3	
3	128	917.26	10,889.9	
4	137	174.73	1,937.7	
5	188	166.59	1,341.0	
6	205	80.86	599.1	
7	212	137.32	982.9	
8	226	94.41	632.9	
9	236	266.39	1,706.9	
10	266	114.36	652.3	
11	280	88.80	480.6	
12	312	150.31	730.5	
13	343	67.26	297.4	
14	370	42.96	175.7	
15	382	108.27	428.9	
16	511	18.16	53.9	
17	542	36.30	101.4	
18	583	26.41	68.6	
19	670	13.38	30.2	
20	698	13.52	29.3	
21	769	16.90	33.3	
22	822	11.70	21.6	
23	1,046	11.75	17.0	
24	1,257	22.39	27.0	
25	1,445	18.04	18.9	
26	1,583	16.07	15.4	

Assay Class: High Sensitivity DNA Assay
 Data Path: C:\...ents and Settings\Bioanalyzer\2012-07-31\2012-07-31_001.xad


Created: 7/31/2012 11:20:24 AM
 Modified: 7/31/2012 12:05:13 PM

Electropherogram Summary Continued ...

... Peak table for sample 4 : 8X15sec

Peak	Size [bp]	Conc. [pg/μl]	Molarity [pmol/l]	Observations
27	1,778	21.12	18.0	
28	2,948	19.26	9.9	
29	3,641	25.49	10.6	
30	4,524	19.06	6.4	
31	5,369	20.12	5.7	
32	6,406	45.17	10.7	
33	8,210	24.25	4.5	
34	10,380	75.00	10.9	Upper Marker
35	12,698	0.00	0.0	
36	14,868	0.00	0.0	
37	15,607	0.00	0.0	
38	16,840	0.00	0.0	

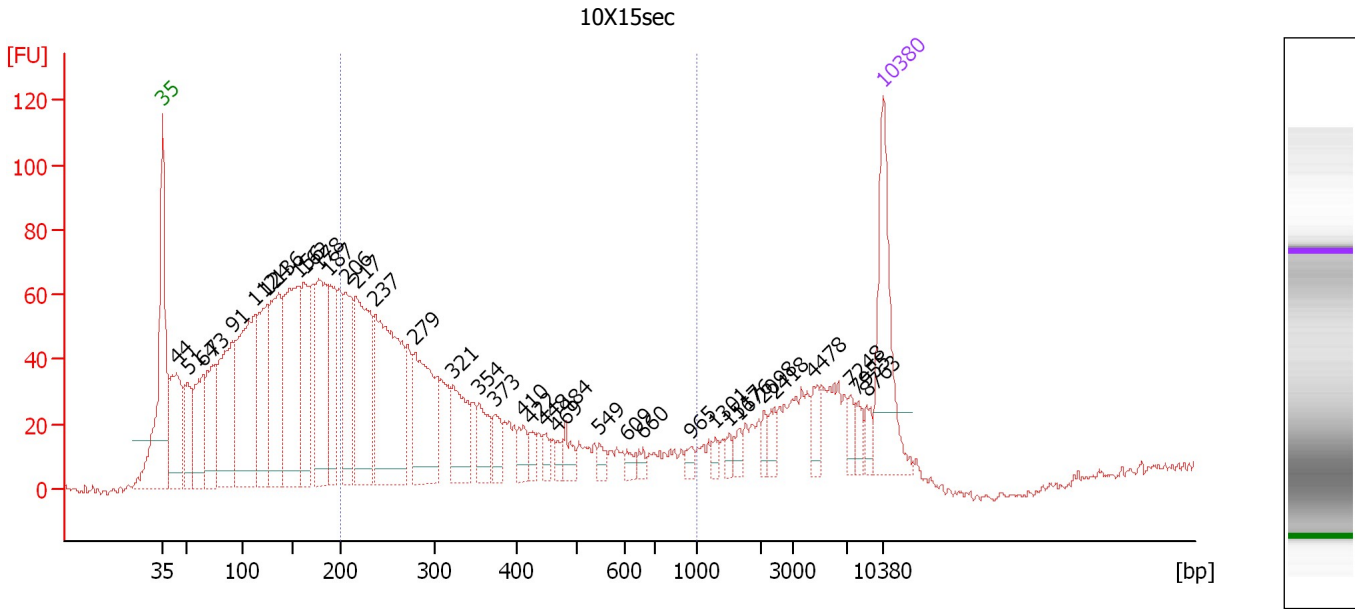
Region table for sample 4 : 8X15sec

From [bp]	To [bp]	Average Size [bp]	Molarity [pmol/l]	Conc. [pg/μl]	Corr. Area	% of Total	Size distribution in CV [%]	Color
200	1,000	382	8,674.5	1,776.05	3,101.8	45	44.6	

Assay Class: High Sensitivity DNA Assay
 Data Path: C:\...ents and Settings\Bioanalyzer\2012-07-31\2012-07-31_001.xad

Created: 7/31/2012 11:20:24 AM
 Modified: 7/31/2012 12:05:13 PM

Electropherogram Summary Continued ...



Overall Results for sample 5 : 10X15sec

Number of peaks found: 37 Corr. Area 1: 1,144.1
 Noise: 1.0

Peak table for sample 5 : 10X15sec

Peak	Size [bp]	Conc. [pg/μl]	Molarity [pmol/l]	Observations
1	35	125.00	5,411.3	Lower Marker
2	44	116.20	4,019.7	
3	51	58.95	1,742.6	
4	64	94.91	2,234.5	
5	73	86.55	1,790.4	
6	91	166.78	2,790.6	
7	112	211.51	2,851.6	
8	124	118.92	1,449.2	
9	136	145.14	1,620.2	
10	156	198.70	1,924.0	
11	162	97.10	908.1	
12	178	131.22	1,120.0	
13	187	93.10	752.5	
14	206	88.75	653.3	
15	217	153.45	1,073.6	
16	237	208.12	1,331.3	
17	279	119.30	648.8	
18	321	61.41	289.5	
19	354	32.73	140.2	
20	373	21.05	85.5	
21	410	17.55	64.8	
22	422	10.41	37.3	
23	448	8.67	29.3	
24	469	7.53	24.3	
25	484	15.29	47.9	
26	549	8.06	22.3	

Assay Class: High Sensitivity DNA Assay
 Data Path: C:\...ents and Settings\Bioanalyzer\2012-07-31\2012-07-31_001.xad

Created: 7/31/2012 11:20:24 AM
 Modified: 7/31/2012 12:05:13 PM

Electropherogram Summary Continued ...

... Peak table for sample 5 : 10X15sec

Peak	Size [bp]	Conc. [pg/μl]	Molarity [pmol/l]	Observations
27	609	7.10	17.7	
28	660	6.56	15.1	
29	965	6.02	9.5	
30	1,301	4.78	5.6	
31	1,517	5.73	5.7	
32	1,676	6.96	6.3	
33	2,098	6.91	5.0	
34	2,418	10.05	6.3	
35	4,478	13.92	4.7	
36	7,248	9.45	2.0	
37	7,955	8.30	1.6	
38	8,763	8.11	1.4	
39	▶ 10,380	75.00	10.9	Upper Marker

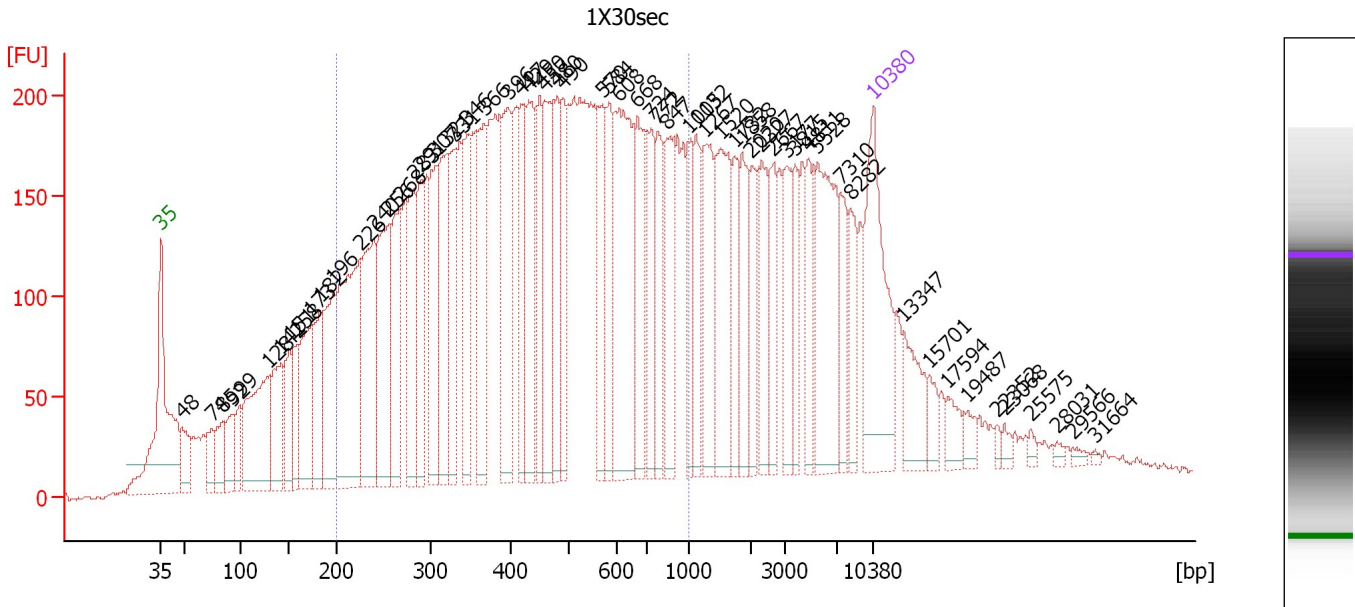
Region table for sample 5 : 10X15sec

From [bp]	To [bp]	Average Size [bp]	Molarity [pmol/l]	Conc. [pg/μl]	Corr. Area	% of Total	Size distribution in CV [%]	Color
200	1,000	339	5,078.4	959.32	1,144.1	38	44.2	■

Assay Class: High Sensitivity DNA Assay
 Data Path: C:\...ents and Settings\Bioanalyzer\2012-07-31\2012-07-31_001.xad

Created: 7/31/2012 11:20:24 AM
 Modified: 7/31/2012 12:05:13 PM

Electropherogram Summary Continued ...



Overall Results for sample 6 : 1X30sec

Number of peaks found: 62 Corr. Area 1: 7,458.7
 Noise: 1.2

Peak table for sample 6 : 1X30sec


Peak	Size [bp]	Conc. [pg/μl]	Molarity [pmol/l]	Observations
1	35	125.00	5,411.3	Lower Marker
2	48	32.91	1,030.7	
3	74	22.03	449.5	
4	85	28.34	506.9	
5	92	32.93	540.7	
6	99	24.52	373.9	
7	128	112.07	1,322.2	
8	142	59.05	629.3	
9	151	39.32	394.6	
10	158	38.55	370.3	
11	173	73.97	646.3	
12	182	54.72	454.6	
13	196	72.16	556.8	
14	226	158.16	1,060.3	
15	240	103.93	655.3	
16	256	88.27	521.8	
17	268	68.41	386.3	
18	283	74.54	399.7	
19	291	55.91	291.5	
20	307	68.54	338.4	
21	321	80.71	380.6	
22	331	52.30	239.3	
23	346	56.52	247.4	
24	366	67.34	278.4	
25	396	73.49	281.2	
26	417	53.71	195.0	

Assay Class: High Sensitivity DNA Assay
 Data Path: C:\...ents and Settings\Bioanalyzer\2012-07-31\2012-07-31_001.xad


Created: 7/31/2012 11:20:24 AM
 Modified: 7/31/2012 12:05:13 PM

Electropherogram Summary Continued ...

... Peak table for sample 6 : 1X30sec

Peak	Size [bp]	Conc. [pg/µl]	Molarity [pmol/l]	Observations
27	429	68.61	242.1	
28	450	52.80	177.9	
29	457	67.48	223.7	
30	480	51.76	163.3	
31	490	47.61	147.4	
32	570	48.28	128.3	
33	584	44.03	114.3	
34	608	117.07	291.9	
35	668	52.85	119.9	
36	724	39.74	83.1	
37	772	43.60	85.6	
38	847	49.33	88.2	
39	1,005	30.53	46.0	
40	1,132	34.35	46.0	
41	1,267	50.49	60.4	
42	1,520	65.81	65.6	
43	1,732	29.06	25.4	
44	1,858	35.56	29.0	
45	2,020	23.34	17.5	
46	2,327	33.75	22.0	
47	2,667	28.09	16.0	
48	3,177	31.24	14.9	
49	3,815	22.39	8.9	
50	4,811	27.85	8.8	
51	5,528	74.34	20.4	
52	7,310	24.13	5.0	
53	8,282	24.69	4.5	
54	 10,380	75.00	10.9	Upper Marker
55	13,347	0.00	0.0	
56	15,701	0.00	0.0	
57	17,594	0.00	0.0	
58	19,487	0.00	0.0	
59	22,352	0.00	0.0	
60	23,068	0.00	0.0	
61	25,575	0.00	0.0	
62	28,031	0.00	0.0	
63	29,566	0.00	0.0	
64	31,664	0.00	0.0	

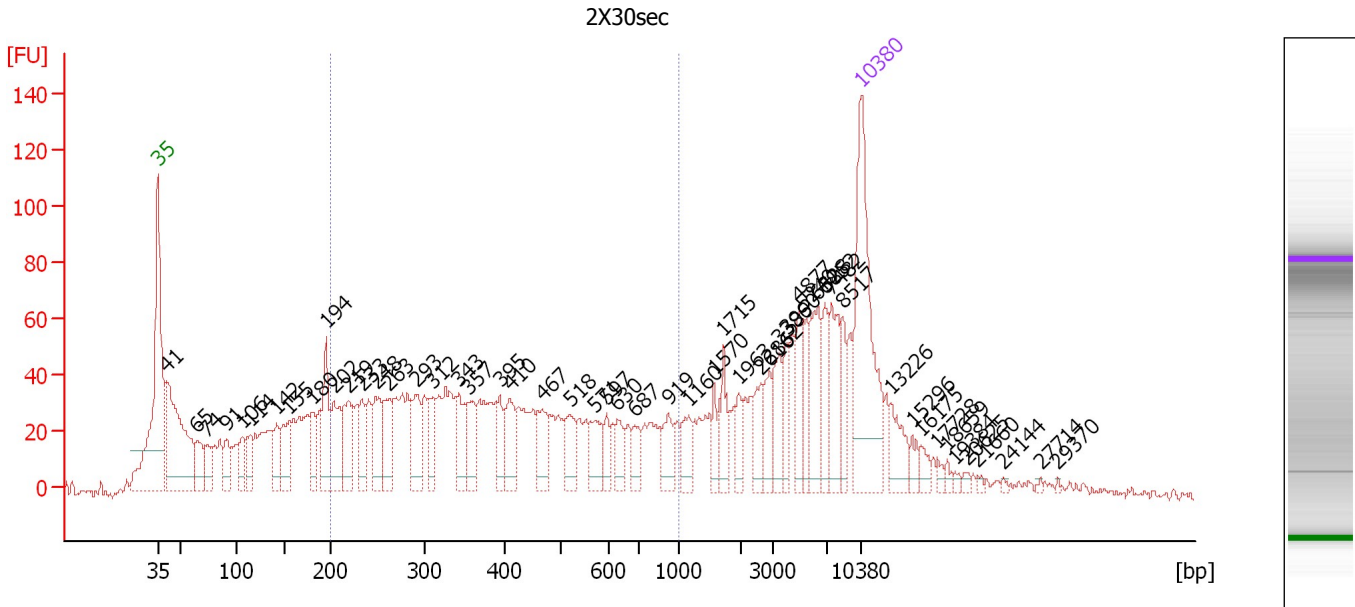
Region table for sample 6 : 1X30sec

From [bp]	To [bp]	Average Size [bp]	Molarity [pmol/l]	Conc. [pg/µl]	Corr. Area	% of Total	Size distribution in CV [%]	Color
200	1,000	466	9,625.0	2,369.16	7,458.7	61	40.3	

Assay Class: High Sensitivity DNA Assay
 Data Path: C:\...ents and Settings\Bioanalyzer\2012-07-31\2012-07-31_001.xad

Created: 7/31/2012 11:20:24 AM
 Modified: 7/31/2012 12:05:13 PM

Electropherogram Summary Continued ...



Overall Results for sample 7 : 2X30sec

Number of peaks found: 53 Corr. Area 1: 1,347.9
 Noise: 1.6

Peak table for sample 7 : 2X30sec


Peak	Size [bp]	Conc. [pg/μl]	Molarity [pmol/l]	Observations
1	35	125.00	5,411.3	Lower Marker
2	41	124.81	4,624.3	
3	65	24.74	579.2	
4	74	16.48	338.1	
5	91	19.39	322.6	
6	106	17.49	249.2	
7	114	18.09	240.2	
8	142	19.64	209.7	
9	155	27.04	264.7	
10	180	20.82	175.5	
11	194	41.13	320.4	
12	202	34.09	255.2	
13	219	35.15	243.6	
14	233	20.35	132.3	
15	248	31.33	191.3	
16	263	25.64	148.0	
17	293	27.13	140.2	
18	312	17.80	86.4	
19	343	23.77	105.0	
20	357	23.41	99.3	
21	395	15.11	58.0	
22	410	22.75	84.0	
23	467	22.56	73.3	
24	518	17.60	51.4	
25	571	18.02	47.9	
26	597	8.90	22.6	

Assay Class: High Sensitivity DNA Assay
 Data Path: C:\...ents and Settings\Bioanalyzer\2012-07-31\2012-07-31_001.xad


Created: 7/31/2012 11:20:24 AM
 Modified: 7/31/2012 12:05:13 PM

Electropherogram Summary Continued ...

... Peak table for sample 7 : 2X30sec

Peak	Size [bp]	Conc. [pg/μl]	Molarity [pmol/l]	Observations
27	630	11.83	28.5	
28	687	11.20	24.7	
29	919	14.96	24.7	
30	1,160	12.51	16.3	
31	1,570	10.09	9.7	
32	1,715	13.66	12.1	
33	1,963	8.21	6.3	
34	2,616	13.05	7.6	
35	2,862	12.15	6.4	
36	3,386	17.12	7.7	
37	3,990	12.31	4.7	
38	4,877	15.57	4.8	
39	5,240	14.49	4.2	
40	6,328	26.45	6.3	
41	6,852	15.31	3.4	
42	7,482	24.86	5.0	
43	8,517	13.32	2.4	
44	 10,380	75.00	10.9	Upper Marker
45	13,226	0.00	0.0	
46	15,296	0.00	0.0	
47	16,175	0.00	0.0	
48	17,728	0.00	0.0	
49	18,659	0.00	0.0	
50	19,384	0.00	0.0	
51	20,625	0.00	0.0	
52	21,660	0.00	0.0	
53	24,144	0.00	0.0	
54	27,714	0.00	0.0	
55	29,370	0.00	0.0	

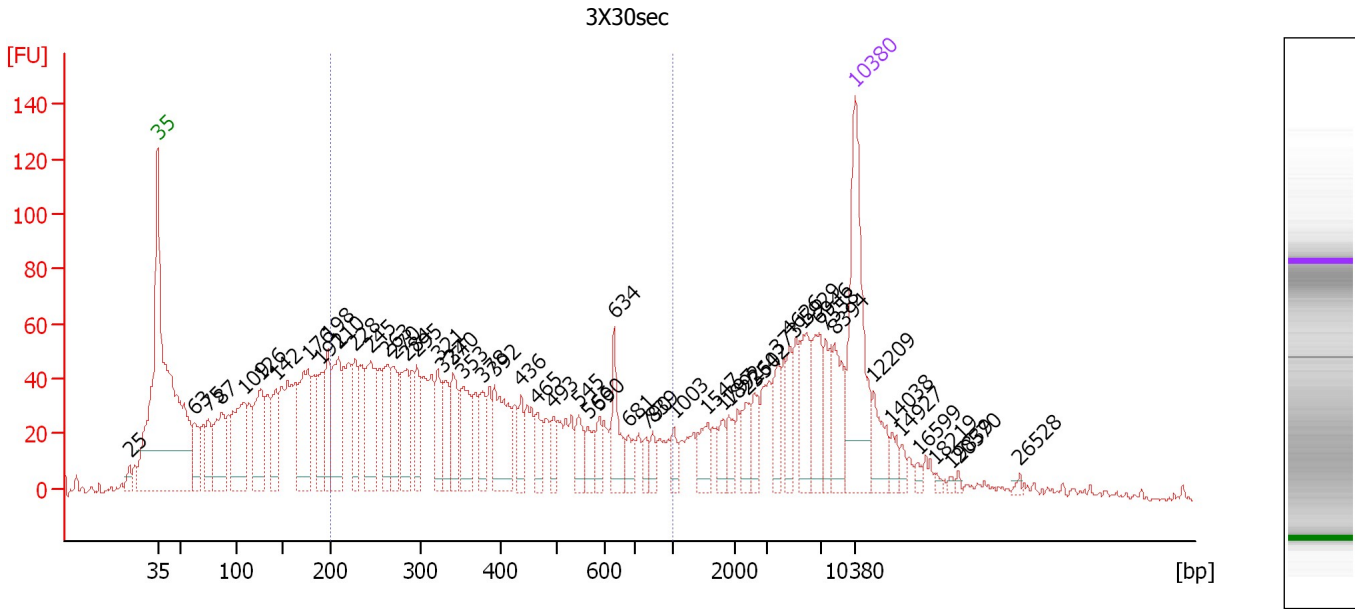
Region table for sample 7 : 2X30sec

From [bp]	To [bp]	Average Size [bp]	Molarity [pmol/l]	Conc. [pg/μl]	Corr. Area	% of Total	Size distribution in CV [%]	Color
200	1,000	429	3,137.6	708.15	1,347.9	45	43.3	

Assay Class: High Sensitivity DNA Assay
 Data Path: C:\...ents and Settings\Bioanalyzer\2012-07-31\2012-07-31_001.xad

Created: 7/31/2012 11:20:24 AM
 Modified: 7/31/2012 12:05:13 PM

Electropherogram Summary Continued ...



Overall Results for sample 8 : 3X30sec

Number of peaks found: 53 Corr. Area 1: 1,547.5
 Noise: 1.2

Peak table for sample 8 : 3X30sec


Peak	Size [bp]	Conc. [pg/μl]	Molarity [pmol/l]	Observations
1	25	0.00	0.0	
2	35	125.00	5,411.3	Lower Marker
3	63	28.60	691.5	
4	75	31.04	625.1	
5	87	58.36	1,017.9	
6	109	75.67	1,052.8	
7	126	65.07	780.5	
8	142	35.10	374.4	
9	176	73.87	635.2	
10	191	35.94	284.9	
11	198	41.43	317.1	
12	210	56.50	408.5	
13	228	35.39	235.5	
14	245	61.12	378.6	
15	263	38.65	222.9	
16	270	32.66	183.1	
17	284	39.75	212.3	
18	295	27.98	143.5	
19	321	25.17	118.9	
20	327	27.28	126.5	
21	340	31.75	141.4	
22	353	34.83	149.5	
23	378	20.44	82.0	
24	392	48.79	188.4	
25	436	15.67	54.5	
26	465	13.19	43.0	

Assay Class: High Sensitivity DNA Assay
 Data Path: C:\...ents and Settings\Bioanalyzer\2012-07-31\2012-07-31_001.xad


Created: 7/31/2012 11:20:24 AM
 Modified: 7/31/2012 12:05:13 PM

Electropherogram Summary Continued ...

... Peak table for sample 8 : 3X30sec

Peak	Size [bp]	Conc. [pg/μl]	Molarity [pmol/l]	Observations
27	493	13.33	41.0	
28	545	14.45	40.1	
29	566	13.28	35.6	
30	590	12.48	32.0	
31	634	27.14	64.9	
32	681	11.70	26.0	
33	790	7.51	14.4	
34	839	8.10	14.6	
35	1,003	8.14	12.3	
36	1,547	15.02	14.7	
37	1,797	9.11	7.7	
38	1,892	9.53	7.6	
39	2,354	12.42	8.0	
40	2,602	12.03	7.0	
41	3,731	16.19	6.6	
42	4,626	14.18	4.6	
43	5,929	25.08	6.4	
44	6,946	28.42	6.2	
45	7,558	17.74	3.6	
46	8,394	25.95	4.7	
47	 10,380	75.00	10.9	Upper Marker
48	12,209	0.00	0.0	
49	14,038	0.00	0.0	
50	14,927	0.00	0.0	
51	16,599	0.00	0.0	
52	18,219	0.00	0.0	
53	19,839	0.00	0.0	
54	20,570	0.00	0.0	
55	26,528	0.00	0.0	

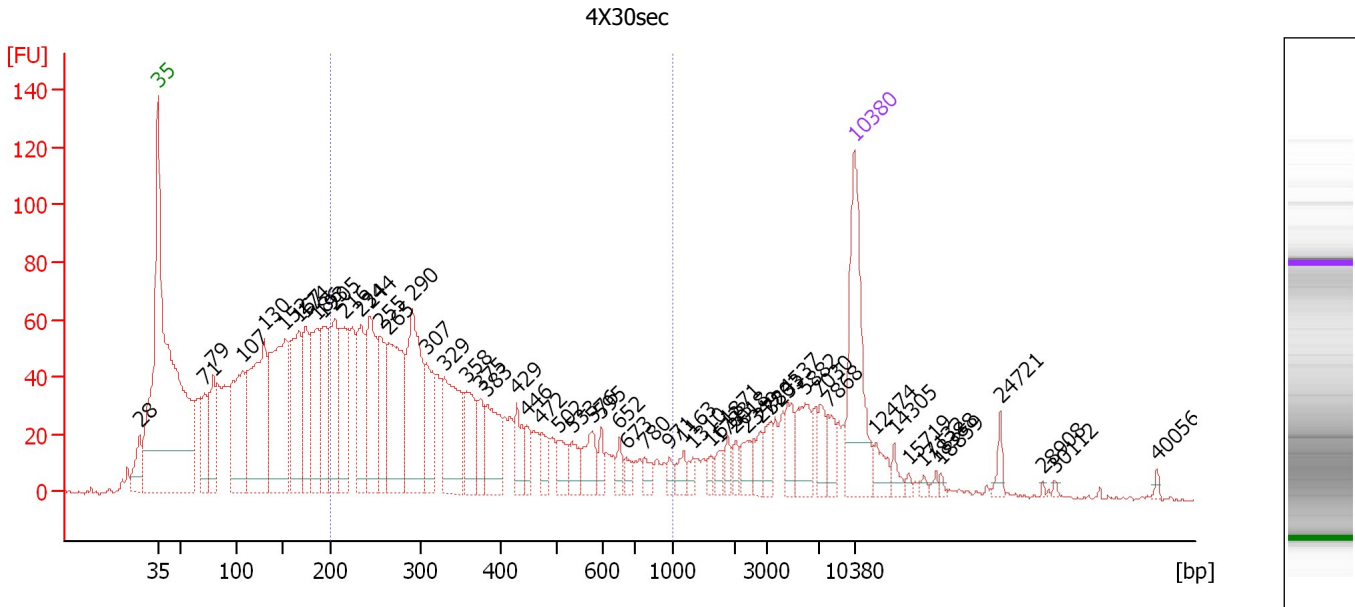
Region table for sample 8 : 3X30sec

From [bp]	To [bp]	Average Size [bp]	Molarity [pmol/l]	Conc. [pg/μl]	Corr. Area	% of Total	Size distribution in CV [%]	Color
200	1,000	401	4,418.1	945.02	1,547.5	49	43.5	

Assay Class: High Sensitivity DNA Assay
 Data Path: C:\...ents and Settings\Bioanalyzer\2012-07-31\2012-07-31_001.xad

Created: 7/31/2012 11:20:24 AM
 Modified: 7/31/2012 12:05:13 PM

Electropherogram Summary Continued ...



Overall Results for sample 9 : 4X30sec

Number of peaks found: 56 Corr. Area 1: 1,557.6
 Noise: 0.8

Peak table for sample 9 : 4X30sec


Peak	Size [bp]	Conc. [pg/μl]	Molarity [pmol/l]	Observations
1	28	0.00	0.0	
2	35	125.00	5,411.3	Lower Marker
3	71	48.80	1,035.0	
4	79	61.30	1,172.9	
5	107	124.36	1,764.5	
6	130	185.52	2,164.8	
7	152	174.30	1,739.5	
8	167	107.38	975.9	
9	174	66.35	579.1	
10	186	86.19	701.3	
11	193	63.66	501.0	
12	205	84.67	625.1	
13	216	76.33	536.1	
14	234	72.26	468.2	
15	244	90.70	563.6	
16	255	63.86	378.7	
17	265	109.28	625.2	
18	290	121.56	635.1	
19	307	45.95	226.6	
20	329	79.54	365.9	
21	358	46.81	198.4	
22	375	22.72	91.8	
23	383	48.50	191.9	
24	429	24.10	85.1	
25	446	13.83	47.0	
26	472	16.64	53.4	

Assay Class: High Sensitivity DNA Assay
 Data Path: C:\...ents and Settings\Bioanalyzer\2012-07-31\2012-07-31_001.xad


Created: 7/31/2012 11:20:24 AM
 Modified: 7/31/2012 12:05:13 PM

Electropherogram Summary Continued ...

... Peak table for sample 9 : 4X30sec

Peak	Size [bp]	Conc. [pg/μl]	Molarity [pmol/l]	Observations
27	502	19.25	58.1	
28	533	14.54	41.3	
29	576	21.81	57.4	
30	595	9.62	24.5	
31	652	9.10	21.2	
32	673	7.07	15.9	
33	780	9.63	18.7	
34	971	5.47	8.5	
35	1,163	9.50	12.4	
36	1,310	5.28	6.1	
37	1,612	5.40	5.1	
38	1,733	7.25	6.3	
39	1,871	7.14	5.8	
40	2,018	6.77	5.1	
41	2,349	12.50	8.1	
42	2,780	10.02	5.5	
43	3,233	10.27	4.8	
44	4,537	15.32	5.1	
45	5,882	25.52	6.6	
46	7,030	14.02	3.0	
47	7,868	11.00	2.1	
48	 10,380	75.00	10.9	Upper Marker
49	12,474	0.00	0.0	
50	14,305	0.00	0.0	
51	15,719	0.00	0.0	
52	17,132	0.00	0.0	
53	18,388	0.00	0.0	
54	18,859	0.00	0.0	
55	24,721	0.00	0.0	
56	28,908	0.00	0.0	
57	30,112	0.00	0.0	
58	40,056	0.00	0.0	

Region table for sample 9 : 4X30sec

From [bp]	To [bp]	Average Size [bp]	Molarity [pmol/l]	Conc. [pg/μl]	Corr. Area	% of Total	Size distribution in CV [%]	Color
200	1,000	362	6,001.4	1,198.07	1,557.6	48	42.8	

Assay Class: High Sensitivity DNA Assay
Data Path: C:\...ents and Settings\Bioanalyzer\2012-07-31\2012-07-31_001.xad

Created: 7/31/2012 11:20:24 AM
Modified: 7/31/2012 12:05:13 PM

Gel Image

