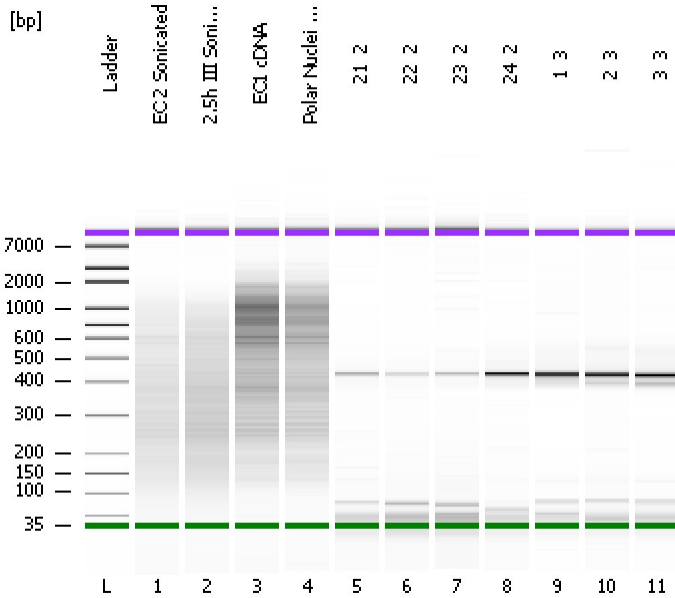


Assay Class: High Sensitivity DNA Assay
Data Path: C:\...ents and Settings\Bioanalyzer\2012-08-01\2012-08-01_001.xad

Created: 8/1/2012 10:17:55 AM
Modified: 8/1/2012 11:00:09 AM

Electrophoresis File Run Summary



Instrument Information:

Instrument Name: DE13701086 Firmware: C.01.069
Serial#: DE13701086 Type: G2938B

Assay Information:

Assay Origin Path: C:\Program Files\Agilent\2100 bioanalyzer\2100 expert\assays\dsDNA\High Sensitivity DNA.xsy
Assay Class: High Sensitivity DNA Assay
Version: 1.03
Assay Comments: Copyright © 2003-2010 Agilent Technologies

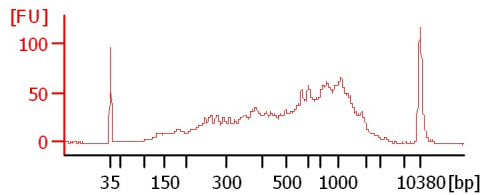
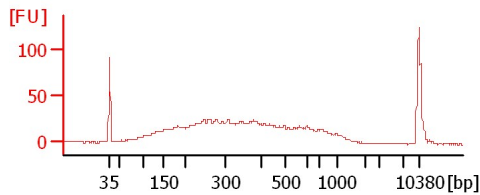
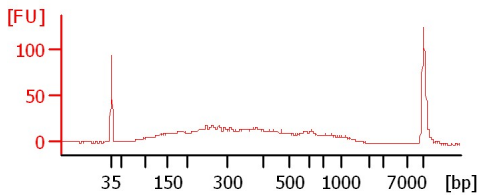
Chip Information:

Chip Lot #:
Reagent Kit Lot #:
Chip Comments:

EC 2 Sonicated

2.5h III Sonicated

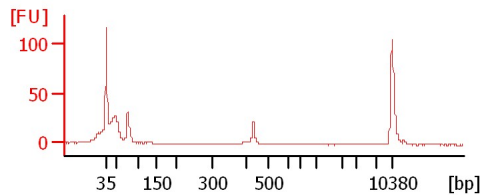
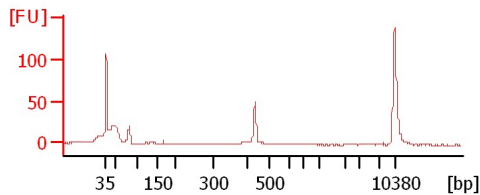
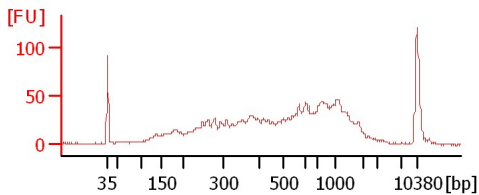
EC1 cDNA



Polar Nuclei cDNA

21_2

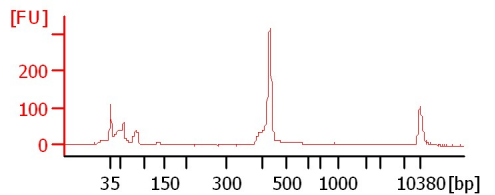
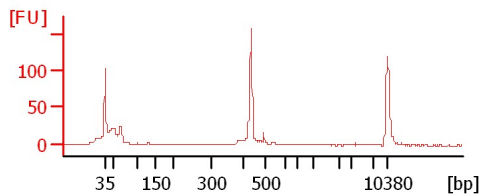
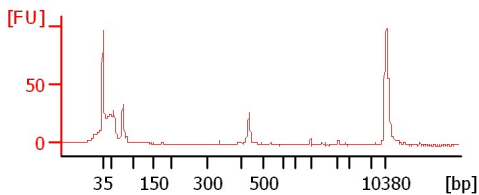
22_2



23_2

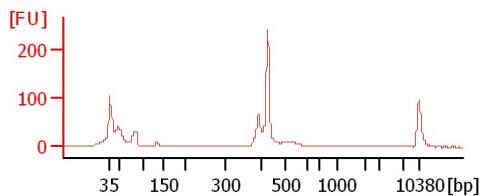
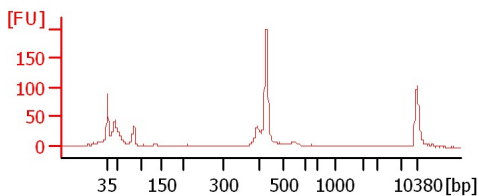
24_2

1_3



2_3

3_3



Assay Class: High Sensitivity DNA Assay
Data Path: C:\...ents and Settings\Bioanalyzer\2012-08-01\2012-08-01_001.xad

Created: 8/1/2012 10:17:55 AM
Modified: 8/1/2012 11:00:09 AM

Electrophoresis File Run Summary (Chip Summary)

Sample Name	Sample Comment	Rest. Digest	Status	Observation	Result Label	Result Color
EC 2 Sonicated		<input type="checkbox"/>	✓			
2.5h III Sonicated		<input type="checkbox"/>	✓			
EC1 cDNA		<input type="checkbox"/>	✓			
Polar Nuclei cDNA		<input type="checkbox"/>	✓			
21_2		<input type="checkbox"/>	✓			
22_2		<input type="checkbox"/>	✓			
23_2		<input type="checkbox"/>	✓			
24_2		<input type="checkbox"/>	✓			
1_3		<input type="checkbox"/>	✓			
2_3		<input type="checkbox"/>	✓			
3_3		<input type="checkbox"/>	✓			
Ladder		<input type="checkbox"/>	✓			

Chip Lot #

Reagent Kit Lot #

Chip Comments :

Assay Class: High Sensitivity DNA Assay
Data Path: C:\...ents and Settings\Bioanalyzer\2012-08-01\2012-08-01_001.xad

Created: 8/1/2012 10:17:55 AM
Modified: 8/1/2012 11:00:09 AM

Electrophoresis Assay Details

General Analysis Settings

Number of Available Sample and Ladder Wells (Max.) : 12
Minimum Visible Range [s] : 32
Maximum Visible Range [s] : 138
Start Analysis Time Range [s] : 33
End Analysis Time Range [s] : 137.5
Ladder Concentration [pg/μl] : 1950
Uses Standard Area for Ladder Fragments
Lower Marker Concentration [pg/μl] : 125
Upper Marker Concentration [pg/μl] : 75
Used Upper Marker for Quantitation
Standard Curve Fit is Point to Point
Show Data Aligned to Lower and Upper Marker

Integrator Settings

Integration Start Time [s] : 33.05
Integration End Time [s] : 137
Slope Threshold : 0.8
Height Threshold [FU] : 5
Area Threshold : 0.1
Width Threshold [s] : 0.6
Baseline Plateau [s] : 0.5

Filter Settings

Filter Width [s] : 0.5
Polynomial Order : 4

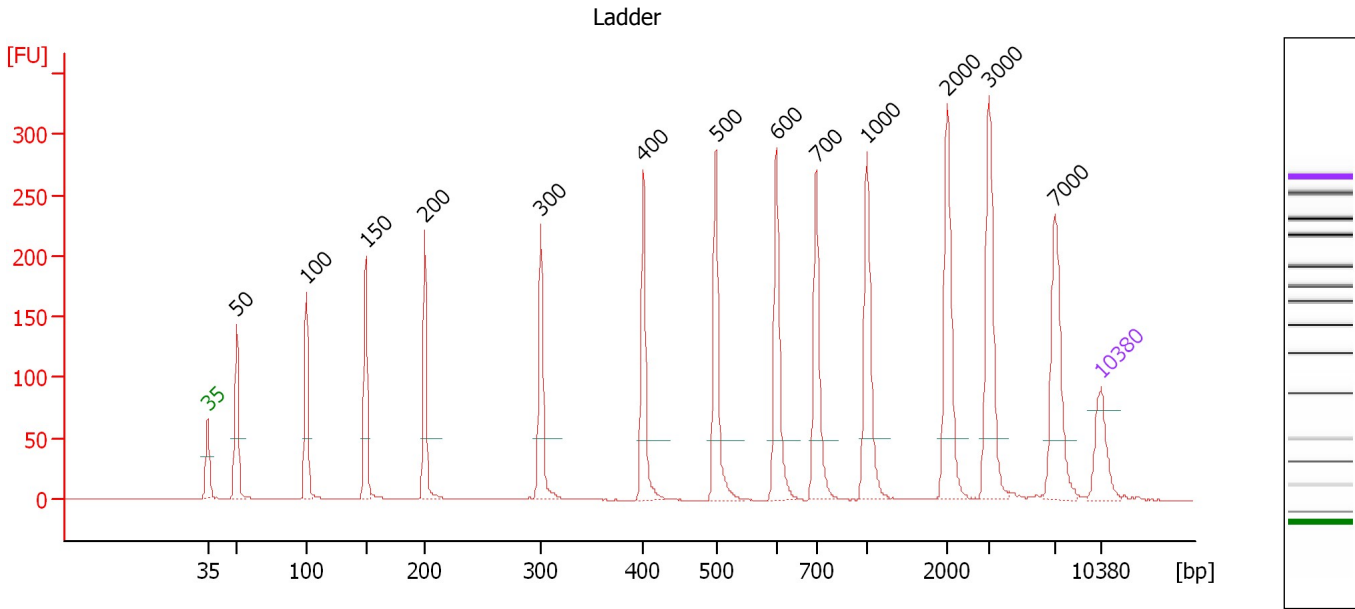
Ladder

Ladder Peak	Size	Area
1	35	160
2	50	210
3	100	208
4	150	221
5	200	242
6	300	270
7	400	305
8	500	306
9	600	336
10	700	321
11	1000	366
12	2000	413
13	3000	411
14	7000	400
15	10380	214

Assay Class: High Sensitivity DNA Assay
 Data Path: C:\...ents and Settings\Bioanalyzer\2012-08-01\2012-08-01_001.xad

Created: 8/1/2012 10:17:55 AM
 Modified: 8/1/2012 11:00:09 AM

Electropherogram Summary



Overall Results for Ladder

Noise: 0.2

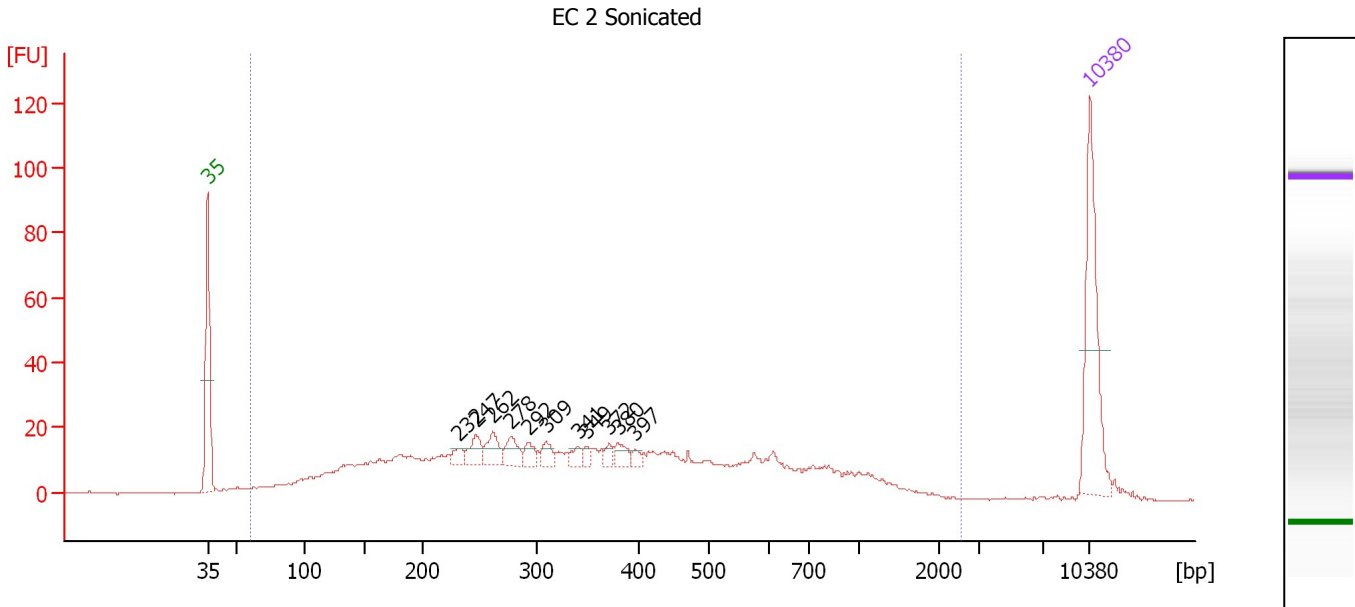
Peak table for Ladder

Peak	Size [bp]	Conc. [pg/μl]	Molarity [pmol/l]	Observations
1	35	125.00	5,411.3	Lower Marker
2	50	150.00	4,545.5	Ladder Peak
3	100	150.00	2,272.7	Ladder Peak
4	150	150.00	1,515.2	Ladder Peak
5	200	150.00	1,136.4	Ladder Peak
6	300	150.00	757.6	Ladder Peak
7	400	150.00	568.2	Ladder Peak
8	500	150.00	454.5	Ladder Peak
9	600	150.00	378.8	Ladder Peak
10	700	150.00	324.7	Ladder Peak
11	1,000	150.00	227.3	Ladder Peak
12	2,000	150.00	113.6	Ladder Peak
13	3,000	150.00	75.8	Ladder Peak
14	7,000	150.00	32.5	Ladder Peak
15	10,380	75.00	10.9	Upper Marker

Assay Class: High Sensitivity DNA Assay
 Data Path: C:\...ents and Settings\Bioanalyzer\2012-08-01\2012-08-01_001.xad

Created: 8/1/2012 10:17:55 AM
 Modified: 8/1/2012 11:00:09 AM

Electropherogram Summary Continued ...



Overall Results for sample 1 : EC 2 Sonicated

Number of peaks found: 11 Corr. Area 1: 848.3
 Noise: 0.2

Peak table for sample 1 : EC 2 Sonicated

Peak	Size [bp]	Conc. [pg/μl]	Molarity [pmol/l]	Observations
1	35	125.00	5,411.3	Lower Marker
2	232	10.74	70.3	
3	247	18.64	114.3	
4	262	20.74	120.0	
5	278	18.62	101.6	
6	292	10.91	56.6	
7	309	10.67	52.4	
8	341	7.76	34.5	
9	349	5.25	22.8	
10	372	6.31	25.7	
11	380	11.26	44.9	
12	397	4.82	18.4	
13	10,380	75.00	10.9	Upper Marker

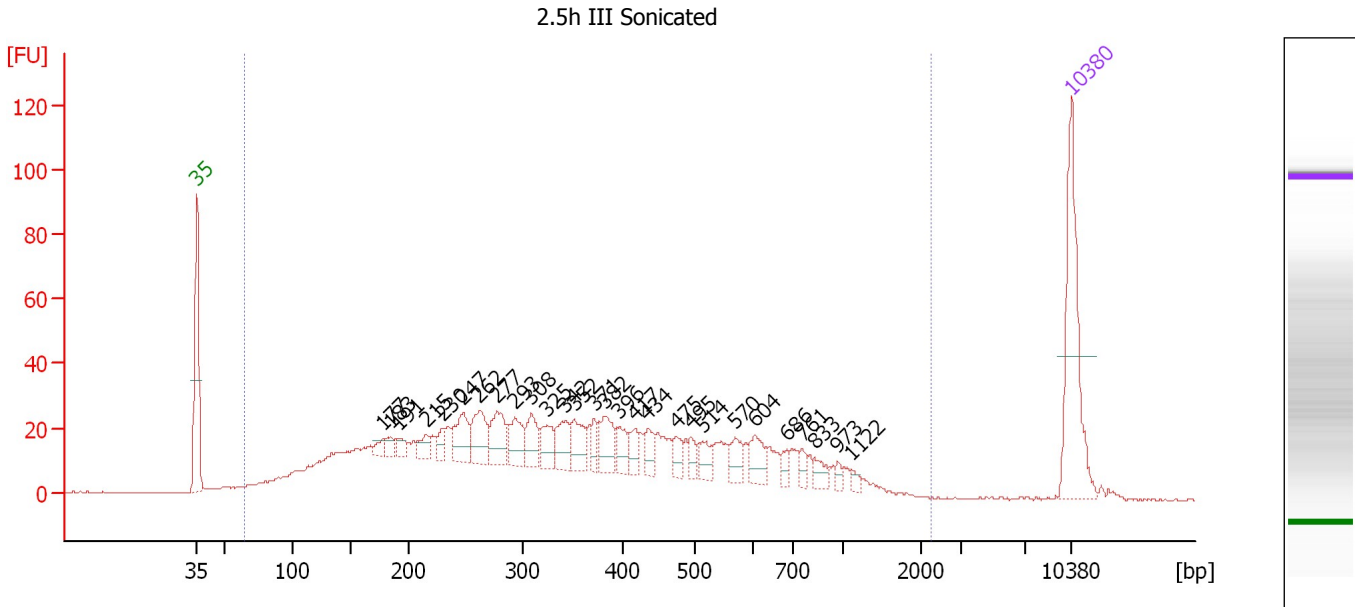
Region table for sample 1 : EC 2 Sonicated

From [bp]	To [bp]	Average Size [bp]	Molarity [pmol/l]	Conc. [pg/μl]	Corr. Area	% of Total	Size distribution in CV [%]	Color
61	2,555	417	5,771.4	918.01	848.3	97	69.4	Blue

Assay Class: High Sensitivity DNA Assay
 Data Path: C:\...ents and Settings\Bioanalyzer\2012-08-01\2012-08-01_001.xad

Created: 8/1/2012 10:17:55 AM
 Modified: 8/1/2012 11:00:09 AM

Electropherogram Summary Continued ...



Overall Results for sample 2 : 2.5h III Sonicated

Number of peaks found: 28 Corr. Area 1: 1,229.8
 Noise: 0.2

Peak table for sample 2 : 2.5h III Sonicated

Peak	Size [bp]	Conc. [pg/μl]	Molarity [pmol/l]	Observations
1	35	125.00	5,411.3	Lower Marker
2	177	8.08	69.1	
3	183	8.23	68.0	
4	191	9.33	74.0	
5	215	12.75	89.8	
6	230	9.82	64.7	
7	247	32.76	200.9	
8	262	34.24	198.2	
9	277	33.60	183.8	
10	293	27.14	140.5	
11	308	24.85	122.1	
12	325	20.61	96.2	
13	342	25.41	112.4	
14	352	22.90	98.7	
15	371	11.22	45.8	
16	382	27.91	110.8	
17	396	16.12	61.6	
18	417	13.33	48.4	
19	434	14.05	49.0	
20	475	12.13	38.7	
21	495	9.43	28.8	
22	514	14.01	41.3	
23	570	14.96	39.8	
24	604	18.37	46.1	
25	686	6.70	14.8	
26	761	6.74	13.4	

Assay Class: High Sensitivity DNA Assay
 Data Path: C:\...ents and Settings\Bioanalyzer\2012-08-01\2012-08-01_001.xad


Created: 8/1/2012 10:17:55 AM
 Modified: 8/1/2012 11:00:09 AM

Electropherogram Summary Continued ...

... Peak table for sample 2 : 2.5h III Sonicated

Peak	Size [bp]	Conc. [pg/μl]	Molarity [pmol/l]	Observations
27	833	8.82	16.1	
28	973	3.93	6.1	
29	1,122	3.52	4.8	
30	10,380	75.00	10.9	Upper Marker

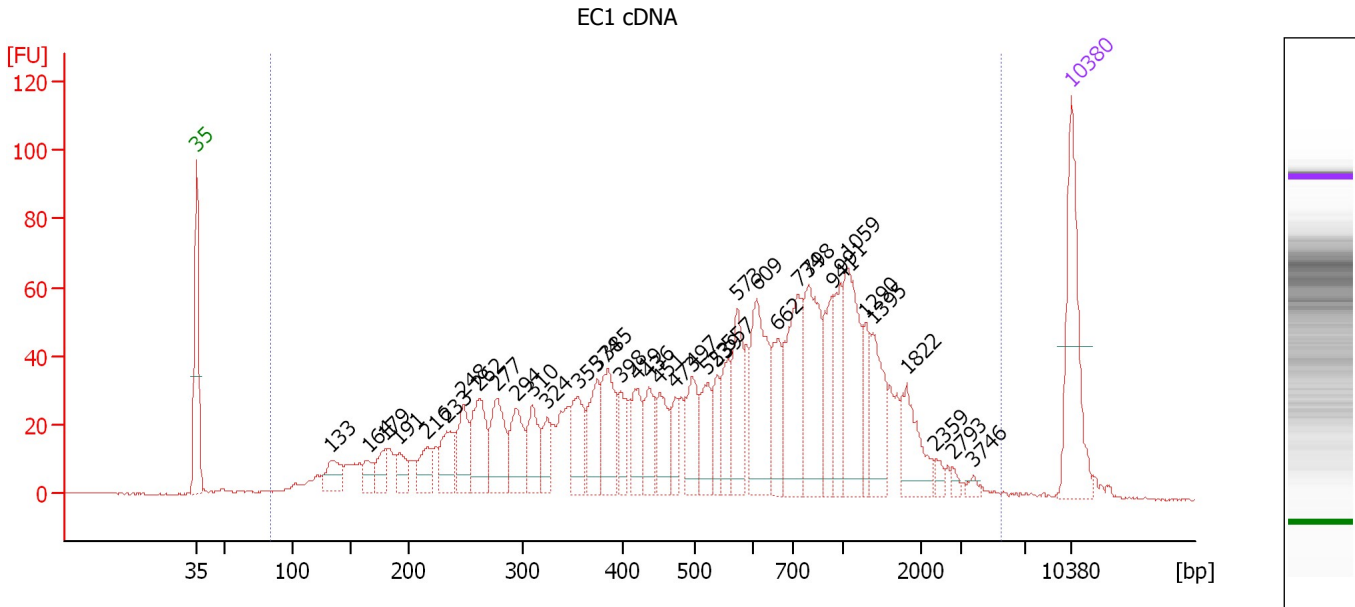
Region table for sample 2 : 2.5h III Sonicated

From [bp]	To [bp]	Average Size [bp]	Molarity [pmol/l]	Conc. [pg/μl]	Corr. Area	% of Total	Size distribution in CV [%]	Color
64	2,263	400	7,597.6	1,227.41	1,229.8	98	62.0	

Assay Class: High Sensitivity DNA Assay
 Data Path: C:\...ents and Settings\Bioanalyzer\2012-08-01\2012-08-01_001.xad

Created: 8/1/2012 10:17:55 AM
 Modified: 8/1/2012 11:00:09 AM

Electropherogram Summary Continued ...



Overall Results for sample 3 : EC1 cDNA

Number of peaks found: 38 Corr. Area 1: 1,952.2
 Noise: 0.1

Peak table for sample 3 : EC1 cDNA

Peak	Size [bp]	Conc. [pg/μl]	Molarity [pmol/l]	Observations
1	35	125.00	5,411.3	Lower Marker
2	133	32.08	366.0	
3	164	19.68	181.5	
4	179	22.73	192.4	
5	191	21.58	170.9	
6	216	27.74	194.7	
7	233	39.96	259.4	
8	248	43.82	267.8	
9	262	61.11	353.4	
10	277	59.90	327.6	
11	294	48.74	251.2	
12	310	40.16	196.5	
13	324	24.55	114.8	
14	355	45.98	196.3	
15	374	45.38	183.8	
16	385	57.34	225.9	
17	398	21.04	80.2	
18	419	36.55	132.1	
19	436	34.70	120.5	
20	451	37.99	127.6	
21	473	20.11	64.4	
22	497	40.28	122.8	
23	523	36.95	107.1	
24	539	24.31	68.3	
25	557	33.89	92.1	
26	573	49.92	132.0	

Assay Class: High Sensitivity DNA Assay
 Data Path: C:\...ents and Settings\Bioanalyzer\2012-08-01\2012-08-01_001.xad

Created: 8/1/2012 10:17:55 AM
 Modified: 8/1/2012 11:00:09 AM

Electropherogram Summary Continued ...

... Peak table for sample 3 : EC1 cDNA

Peak	Size [bp]	Conc. [pg/μl]	Molarity [pmol/l]	Observations
27	609	87.01	216.5	
28	662	37.65	86.1	
29	734	84.07	173.4	
30	798	84.76	161.0	
31	941	45.01	72.4	
32	991	36.14	55.2	
33	1,059	79.24	113.4	
34	1,290	22.66	26.6	
35	1,395	46.65	50.7	
36	1,822	39.68	33.0	
37	2,359	5.58	3.6	
38	2,793	3.92	2.1	
39	3,746	3.70	1.5	
40	▶ 10,380	75.00	10.9	Upper Marker

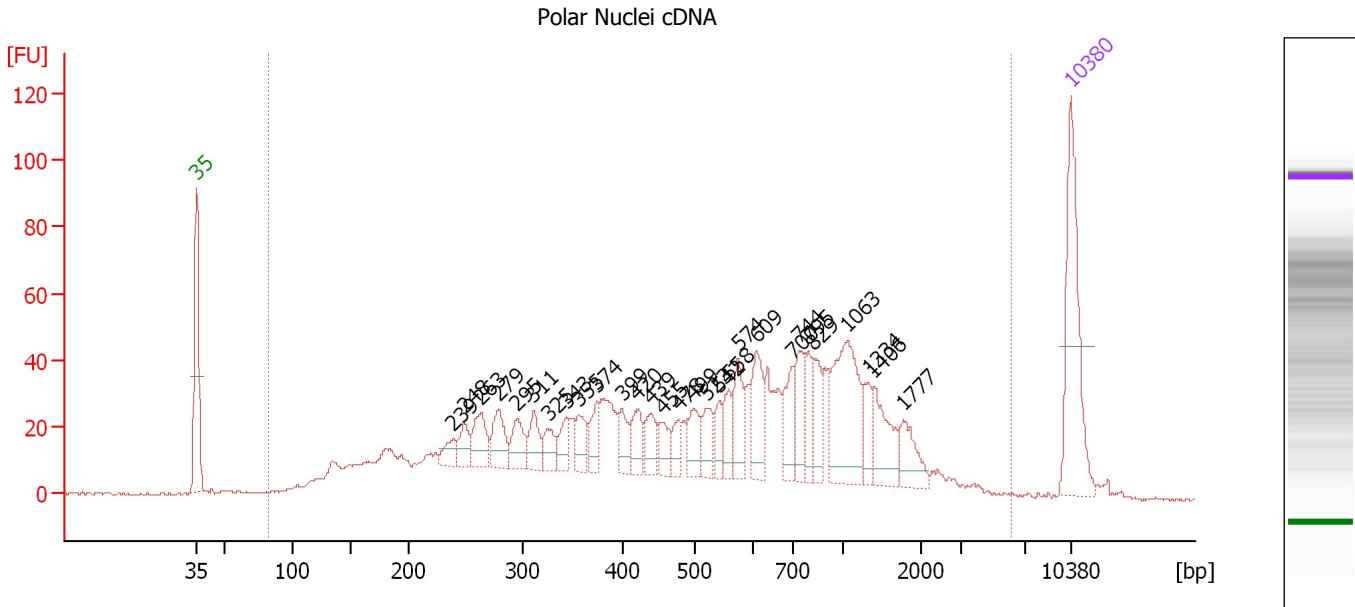
Region table for sample 3 : EC1 cDNA

From [bp]	To [bp]	Average Size [bp]	Molarity [pmol/l]	Conc. [pg/μl]	Corr. Area	% of Total	Size distribution in CV [%]	Color
84	5,482	725	7,254.1	1,801.74	1,952.2	99	77.6	■

Assay Class: High Sensitivity DNA Assay
 Data Path: C:\...ents and Settings\Bioanalyzer\2012-08-01\2012-08-01_001.xad

Created: 8/1/2012 10:17:55 AM
 Modified: 8/1/2012 11:00:09 AM

Electropherogram Summary Continued ...



Overall Results for sample 4 : Polar Nuclei cDNA

Number of peaks found: 29 Corr. Area 1: 1,549.5
 Noise: 0.2

Peak table for sample 4 : Polar Nuclei cDNA

Peak	Size [bp]	Conc. [pg/μl]	Molarity [pmol/l]	Observations
1	35	125.00	5,411.3	Lower Marker
2	239	16.18	102.5	
3	248	19.83	120.9	
4	263	32.63	188.1	
5	279	31.07	168.6	
6	295	25.95	133.3	
7	311	22.80	111.2	
8	325	18.17	84.6	
9	343	19.44	85.8	
10	355	21.15	90.3	
11	374	18.58	75.2	
12	399	18.82	71.5	
13	420	22.48	81.1	
14	439	21.50	74.2	
15	455	17.98	59.9	
16	478	13.77	43.7	
17	499	24.70	75.0	
18	523	20.33	58.9	
19	542	15.37	43.0	
20	558	19.45	52.8	
21	574	30.41	80.2	
22	609	38.44	95.6	
23	700	28.06	60.8	
24	744	30.76	62.7	
25	795	20.49	39.1	
26	829	23.31	42.6	

Assay Class: High Sensitivity DNA Assay
 Data Path: C:\...ents and Settings\Bioanalyzer\2012-08-01\2012-08-01_001.xad


Created: 8/1/2012 10:17:55 AM
 Modified: 8/1/2012 11:00:09 AM

Electropherogram Summary Continued ...

... Peak table for sample 4 : Polar Nuclei cDNA

Peak	Size [bp]	Conc. [pg/μl]	Molarity [pmol/l]	Observations
27	1,063	82.08	117.0	
28	1,334	16.56	18.8	
29	1,406	33.45	36.0	
30	1,777	21.89	18.7	
31	10,380	75.00	10.9	Upper Marker

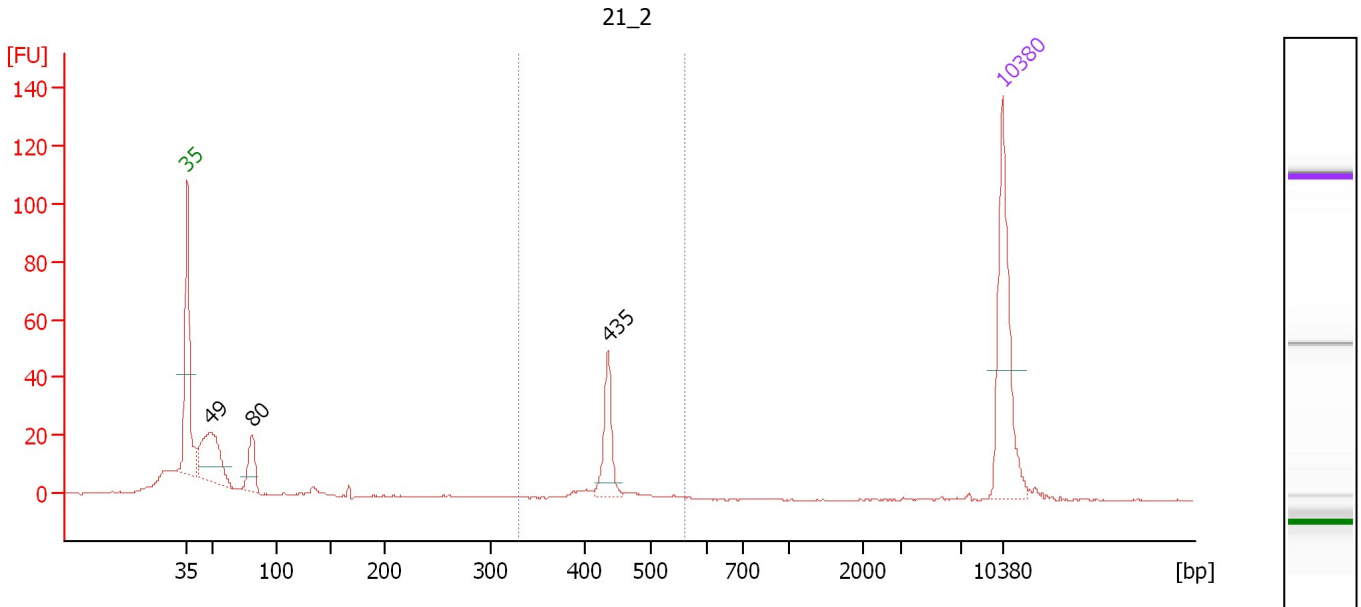
Region table for sample 4 : Polar Nuclei cDNA

From [bp]	To [bp]	Average Size [bp]	Molarity [pmol/l]	Conc. [pg/μl]	Corr. Area	% of Total	Size distribution in CV [%]	Color
82	6,147	694	5,983.7	1,400.57	1,549.5	99	83.9	

Assay Class: High Sensitivity DNA Assay
 Data Path: C:\...ents and Settings\Bioanalyzer\2012-08-01\2012-08-01_001.xad

Created: 8/1/2012 10:17:55 AM
 Modified: 8/1/2012 11:00:09 AM

Electropherogram Summary Continued ...



Overall Results for sample 5 : 21_2

Number of peaks found: 3 Corr. Area 1: 60.8
 Noise: 0.2

Peak table for sample 5 : 21_2

Peak	Size [bp]	Conc. [pg/μl]	Molarity [pmol/l]	Observations
1	35	125.00	5,411.3	Lower Marker
2	49	86.59	2,694.9	
3	80	33.03	622.7	
4	435	40.70	141.7	
5	10,380	75.00	10.9	Upper Marker

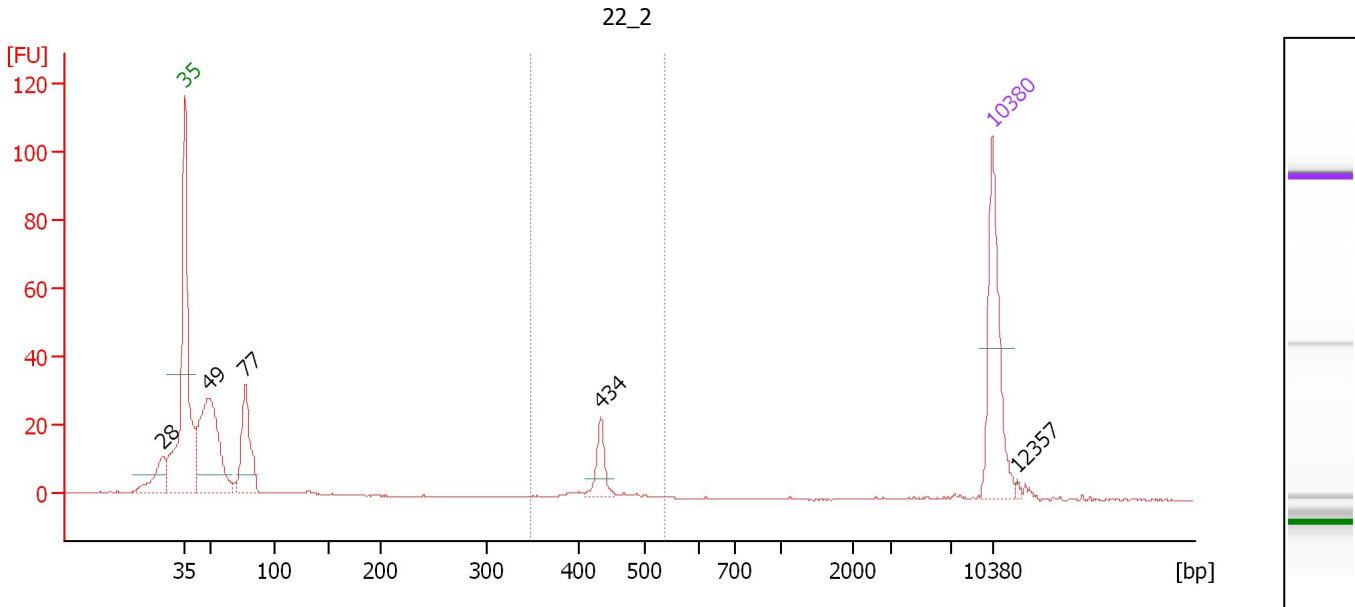
Region table for sample 5 : 21_2

From [bp]	To [bp]	Average Size [bp]	Molarity [pmol/l]	Conc. [pg/μl]	Corr. Area	% of Total	Size distribution in CV [%]	Color
328	560	434	166.4	47.62	60.8	23	4.3	Blue

Assay Class: High Sensitivity DNA Assay
 Data Path: C:\...ents and Settings\Bioanalyzer\2012-08-01\2012-08-01_001.xad

Created: 8/1/2012 10:17:55 AM
 Modified: 8/1/2012 11:00:09 AM

Electropherogram Summary Continued ...



Overall Results for sample 6 : 22_2

Number of peaks found: 5 Corr. Area 1: 28.9
 Noise: 0.2

Peak table for sample 6 : 22_2

Peak	Size [bp]	Conc. [pg/μl]	Molarity [pmol/l]	Observations
1	28	0.00	0.0	
2	35	125.00	5,411.3	Lower Marker
3	49	190.23	5,940.3	
4	77	88.87	1,746.4	
5	434	25.17	87.9	
6	10,380	75.00	10.9	Upper Marker
7	12,357	0.00	0.0	

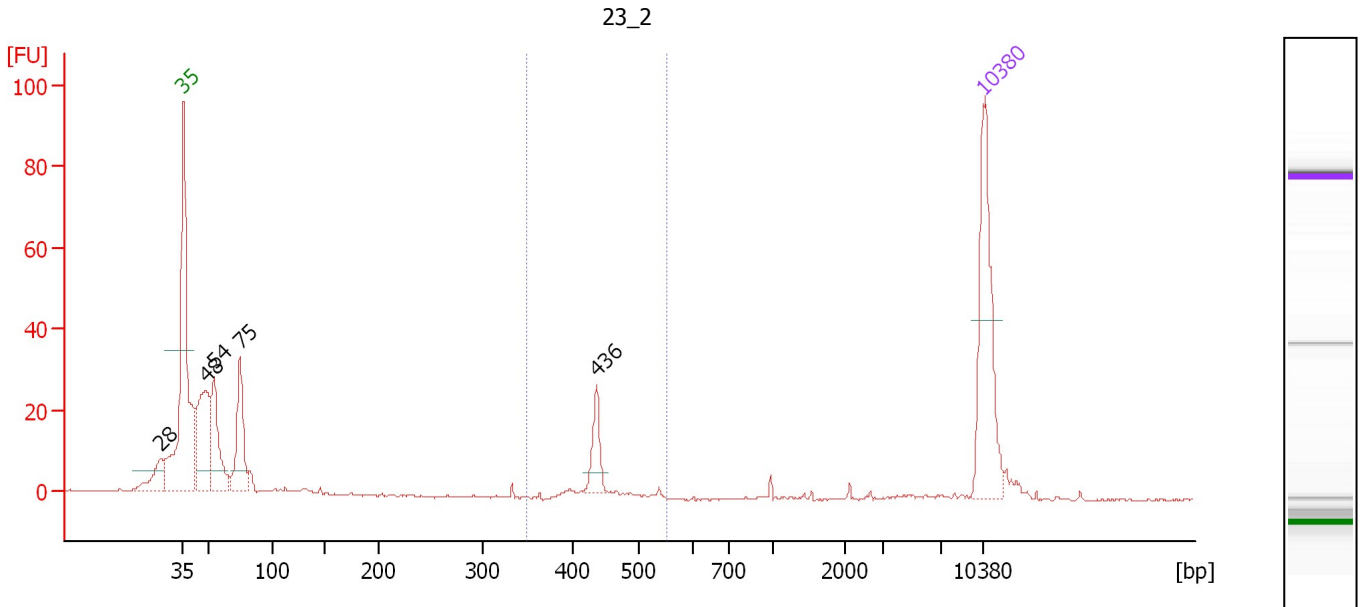
Region table for sample 6 : 22_2

From [bp]	To [bp]	Average Size [bp]	Molarity [pmol/l]	Conc. [pg/μl]	Corr. Area	% of Total	Size distribution in CV [%]	Color
347	539	433	102.5	29.25	28.9	10	4.1	Blue

Assay Class: High Sensitivity DNA Assay
 Data Path: C:\...ents and Settings\Bioanalyzer\2012-08-01\2012-08-01_001.xad

Created: 8/1/2012 10:17:55 AM
 Modified: 8/1/2012 11:00:09 AM

Electropherogram Summary Continued ...



Overall Results for sample 7 : 23_2

Number of peaks found: 5 Corr. Area 1: 30.8
 Noise: 0.3

Peak table for sample 7 : 23_2

Peak	Size [bp]	Conc. [pg/μl]	Molarity [pmol/l]	Observations
1	28	0.00	0.0	
2	35	125.00	5,411.3	Lower Marker
3	48	102.64	3,237.9	
4	54	72.88	2,040.7	
5	75	68.87	1,399.4	
6	436	24.20	84.2	
7	10,380	75.00	10.9	Upper Marker

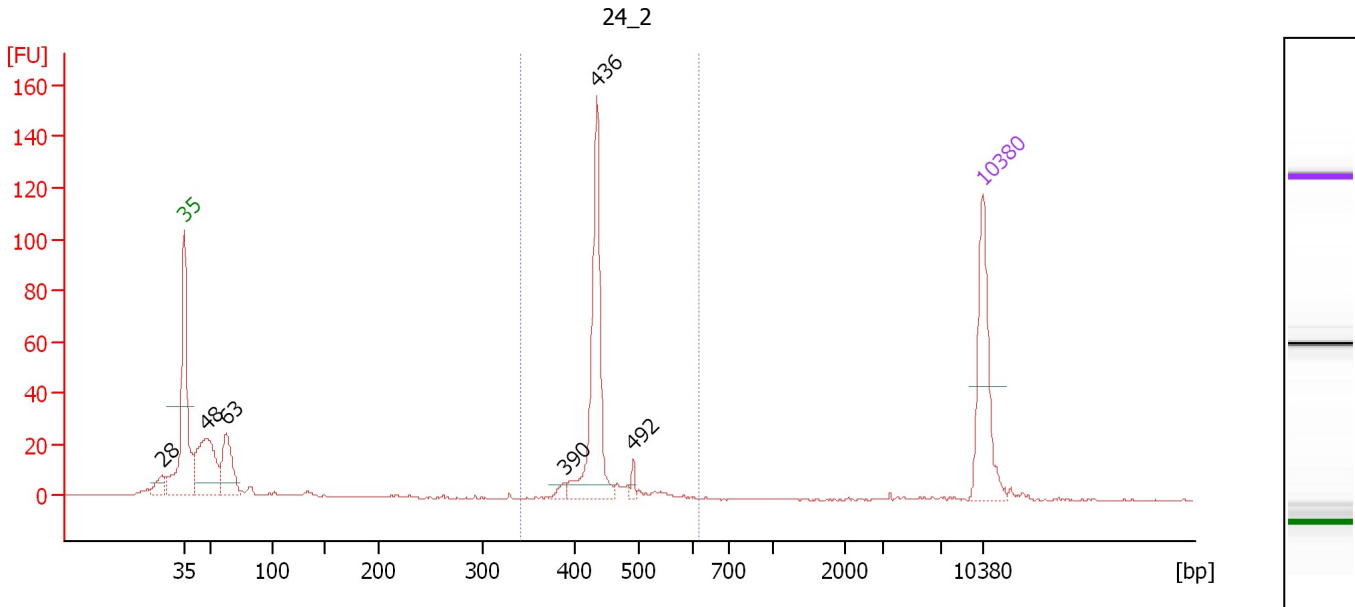
Region table for sample 7 : 23_2

From [bp]	To [bp]	Average Size [bp]	Molarity [pmol/l]	Conc. [pg/μl]	Corr. Area	% of Total	Size distribution in CV [%]	Color
348	554	436	104.3	29.94	30.8	12	4.6	Blue

Assay Class: High Sensitivity DNA Assay
 Data Path: C:\...ents and Settings\Bioanalyzer\2012-08-01\2012-08-01_001.xad

Created: 8/1/2012 10:17:55 AM
 Modified: 8/1/2012 11:00:09 AM

Electropherogram Summary Continued ...



Overall Results for sample 8 : 24_2

Number of peaks found: 6 Corr. Area 1: 210.4
 Noise: 0.3

Peak table for sample 8 : 24_2

Peak	Size [bp]	Conc. [pg/μl]	Molarity [pmol/l]	Observations
1	28	0.00	0.0	
2	35	125.00	5,411.3	Lower Marker
3	48	124.84	3,936.9	
4	63	71.62	1,719.5	
5	390	6.24	24.2	
6	436	159.10	553.4	
7	492	5.75	17.7	
8	10,380	75.00	10.9	Upper Marker

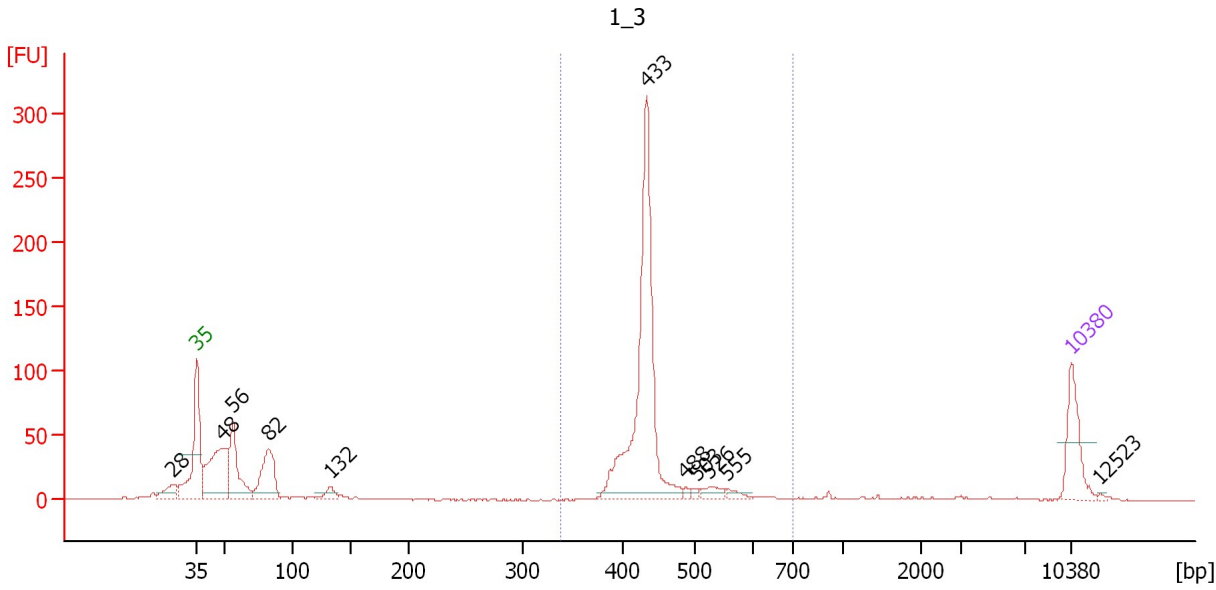
Region table for sample 8 : 24_2

From [bp]	To [bp]	Average Size [bp]	Molarity [pmol/l]	Conc. [pg/μl]	Corr. Area	% of Total	Size distribution in CV [%]	Color
341	615	439	648.4	187.25	210.4	49	6.8	Blue

Assay Class: High Sensitivity DNA Assay
 Data Path: C:\...ents and Settings\Bioanalyzer\2012-08-01\2012-08-01_001.xad

Created: 8/1/2012 10:17:55 AM
 Modified: 8/1/2012 11:00:09 AM

Electropherogram Summary Continued ...



Overall Results for sample 9 : 1_3

Number of peaks found: 11 Corr. Area 1: 590.5
 Noise: 0.3

Peak table for sample 9 : 1_3

Peak	Size [bp]	Conc. [pg/μl]	Molarity [pmol/l]	Observations
1	28	0.00	0.0	
2	35	125.00	5,411.3	Lower Marker
3	48	233.65	7,307.5	
4	56	157.83	4,268.1	
5	82	144.16	2,670.1	
6	132	24.48	281.5	
7	433	519.26	1,815.8	
8	488	5.92	18.4	
9	503	5.64	17.0	
10	526	18.42	53.0	
11	555	10.36	28.3	
12	10,380	75.00	10.9	Upper Marker
13	12,523	0.00	0.0	

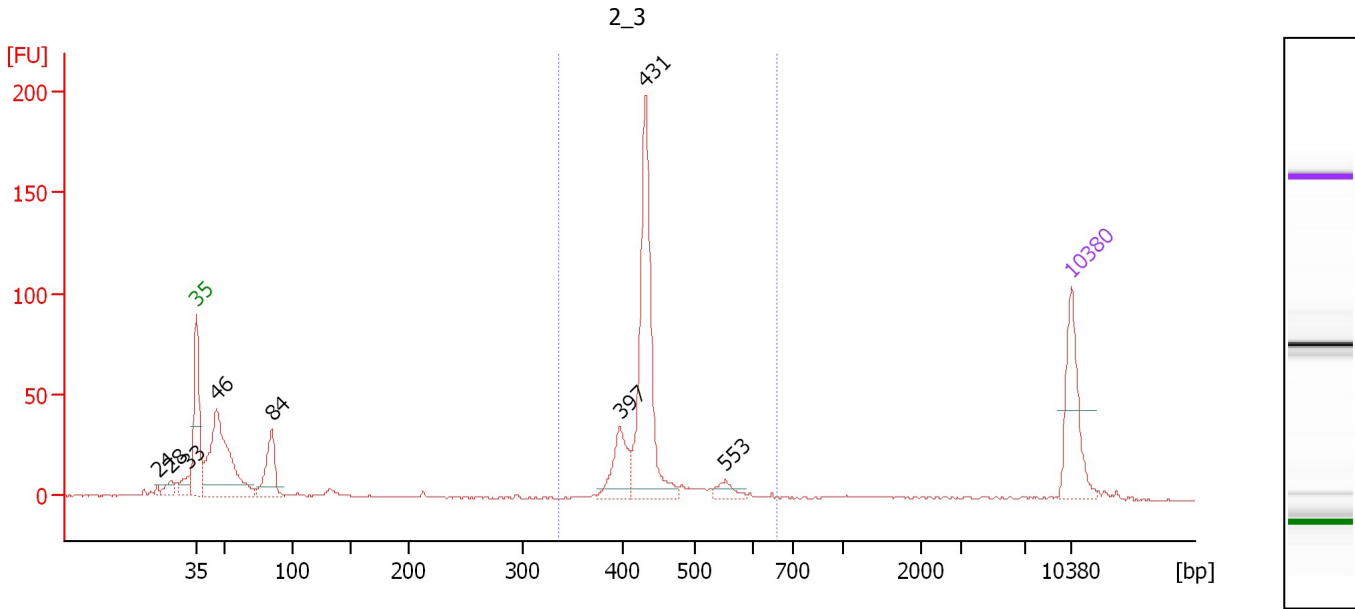
Region table for sample 9 : 1_3

From [bp]	To [bp]	Average Size [bp]	Molarity [pmol/l]	Conc. [pg/μl]	Corr. Area	% of Total	Size distribution in CV [%]	Color
339	701	440	2,037.6	586.15	590.5	55	9.6	Blue

Assay Class: High Sensitivity DNA Assay
 Data Path: C:\...ents and Settings\Bioanalyzer\2012-08-01\2012-08-01_001.xad

Created: 8/1/2012 10:17:55 AM
 Modified: 8/1/2012 11:00:09 AM

Electropherogram Summary Continued ...



Overall Results for sample 10 : 2_3

Number of peaks found: 8 Corr. Area 1: 332.8
 Noise: 0.3

Peak table for sample 10 : 2_3

Peak	Size [bp]	Conc. [pg/μl]	Molarity [pmol/l]	Observations
1	24	0.00	0.0	
2	28	0.00	0.0	
3	33	0.00	0.0	
4	35	125.00	5,411.3	Lower Marker
5	46	267.55	8,873.8	
6	84	83.77	1,507.2	
7	397	64.09	244.7	
8	431	260.80	916.2	
9	553	15.47	42.3	
10	10,380	75.00	10.9	Upper Marker

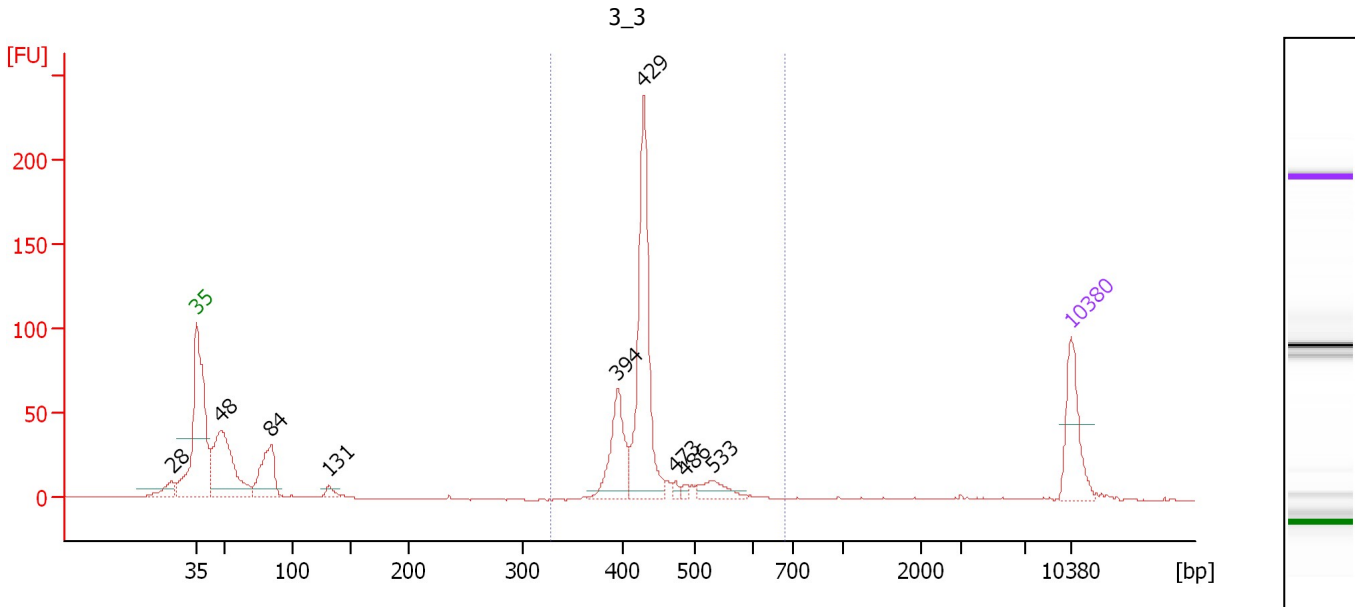
Region table for sample 10 : 2_3

From [bp]	To [bp]	Average Size [bp]	Molarity [pmol/l]	Conc. [pg/μl]	Corr. Area	% of Total	Size distribution in CV [%]	Color
335	661	432	1,159.7	329.30	332.8	53	7.0	Blue

Assay Class: High Sensitivity DNA Assay
 Data Path: C:\...ents and Settings\Bioanalyzer\2012-08-01\2012-08-01_001.xad

Created: 8/1/2012 10:17:55 AM
 Modified: 8/1/2012 11:00:09 AM

Electropherogram Summary Continued ...



Overall Results for sample 11 : 3 3

Number of peaks found: 9 Corr. Area 1: 484.0
 Noise: 0.2

Peak table for sample 11 : 3 3

Peak	Size [bp]	Conc. [pg/μl]	Molarity [pmol/l]	Observations
1	28	0.00	0.0	
2	35	125.00	5,411.3	Lower Marker
3	48	259.95	8,163.1	
4	84	123.48	2,227.3	
5	131	14.99	173.8	
6	394	121.72	467.6	
7	429	311.41	1,100.2	
8	473	7.91	25.3	
9	486	6.69	20.8	
10	533	34.09	96.9	
11	10,380	75.00	10.9	Upper Marker

Region table for sample 11 : 3 3

From [bp]	To [bp]	Average Size [bp]	Molarity [pmol/l]	Conc. [pg/μl]	Corr. Area	% of Total	Size distribution in CV [%]	Color
327	681	434	1,763.2	500.08	484.0	59	9.8	Blue

Assay Class: High Sensitivity DNA Assay
Data Path: C:\...ents and Settings\Bioanalyzer\2012-08-01\2012-08-01_001.xad

Created: 8/1/2012 10:17:55 AM
Modified: 8/1/2012 11:00:09 AM

Gel Image

