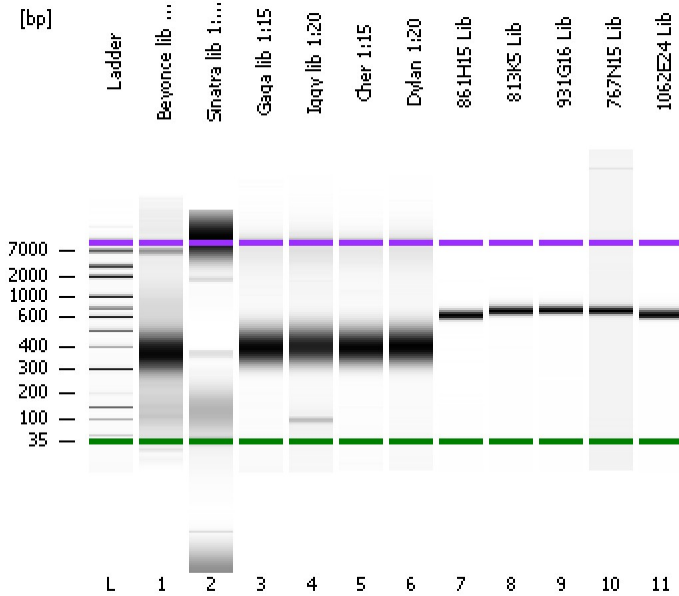


Assay Class: High Sensitivity DNA Assay
Data Path: C:\...ents and Settings\Bioanalyzer\2012-08-01\2012-08-01_003.xad

Created: 8/1/2012 1:03:17 PM
Modified: 8/1/2012 4:32:06 PM

Electrophoresis File Run Summary



Instrument Information:

Instrument Name: DE13701086 Firmware: C.01.069
Serial#: DE13701086 Type: G2938B

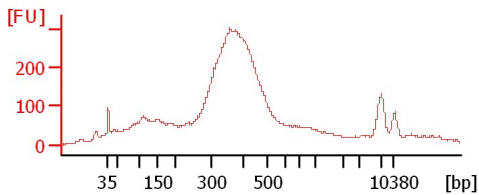
Assay Information:

Assay Origin Path: C:\Program Files\Agilent\2100 bioanalyzer\2100 expert\assays\dsDNA\High Sensitivity DNA.xsy
Assay Class: High Sensitivity DNA Assay
Version: 1.03
Assay Comments: Copyright © 2003-2010 Agilent Technologies

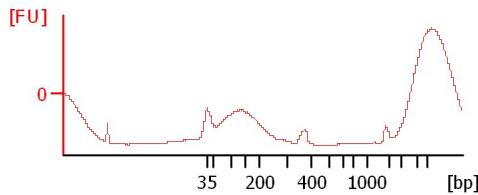
Chip Information:

Chip Lot #:
Reagent Kit Lot #:
Chip Comments:

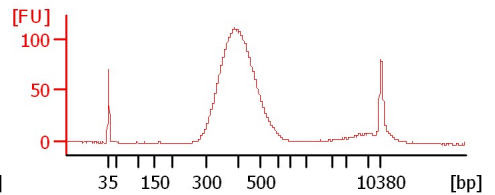
Beyonce lib 1:15



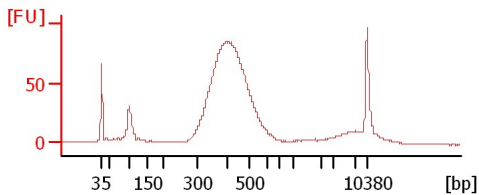
Sinatra lib 1:15



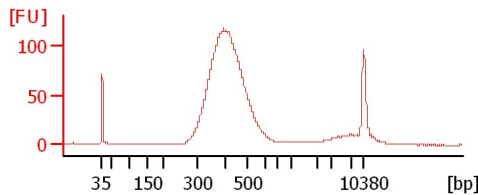
Gaga lib 1:15



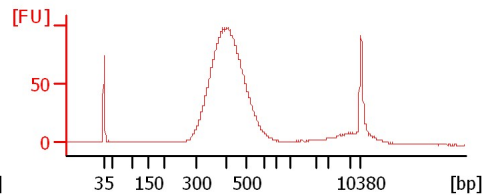
Iggy lib 1:20



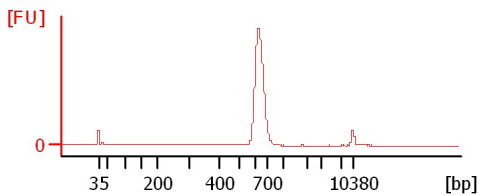
Cher 1:15



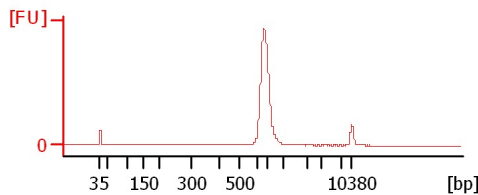
Dylan 1:20



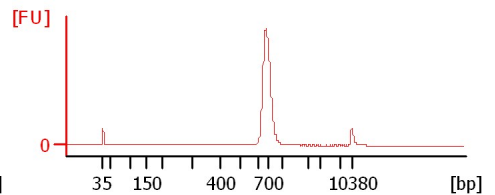
861H15 Lib



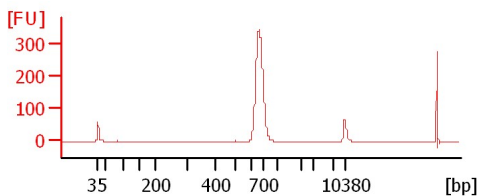
813K5 Lib



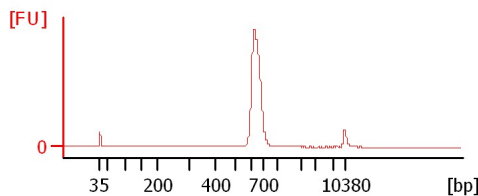
931G16 Lib



767N15 Lib



1062E24 Lib



Assay Class: High Sensitivity DNA Assay
 Data Path: C:\...ents and Settings\Bioanalyzer\2012-08-01\2012-08-01_003.xad

Created: 8/1/2012 1:03:17 PM
 Modified: 8/1/2012 4:32:06 PM

Electrophoresis File Run Summary (Chip Summary)

Sample Name	Sample Comment	Rest. Digest	Status	Observation	Result Label	Result Color
Beyonce lib 1:15		<input type="checkbox"/>	✓			
Sinatra lib 1:15		<input type="checkbox"/>	✓			
Gaga lib 1:15		<input type="checkbox"/>	✓			
Iggy lib 1:20		<input type="checkbox"/>	✓			
Cher 1:15		<input type="checkbox"/>	✓			
Dylan 1:20		<input type="checkbox"/>	✓			
861H15 Lib		<input type="checkbox"/>	✓			
813K5 Lib		<input type="checkbox"/>	✓			
931G16 Lib		<input type="checkbox"/>	✓			
767N15 Lib		<input type="checkbox"/>	✓			
1062E24 Lib		<input type="checkbox"/>	✓			
Ladder		<input type="checkbox"/>	✓			

Chip Lot #

Reagent Kit Lot #

Chip Comments :

Assay Class: High Sensitivity DNA Assay
Data Path: C:\...ents and Settings\Bioanalyzer\2012-08-01\2012-08-01_003.xad

Created: 8/1/2012 1:03:17 PM
Modified: 8/1/2012 4:32:06 PM

Electrophoresis Assay Details

General Analysis Settings

Number of Available Sample and Ladder Wells (Max.) : 12
Minimum Visible Range [s] : 32
Maximum Visible Range [s] : 138
Start Analysis Time Range [s] : 33
End Analysis Time Range [s] : 137.5
Ladder Concentration [pg/μl] : 1950
Uses Standard Area for Ladder Fragments
Lower Marker Concentration [pg/μl] : 125
Upper Marker Concentration [pg/μl] : 75
Used Upper Marker for Quantitation
Standard Curve Fit is Point to Point
Show Data Aligned to Lower and Upper Marker

Integrator Settings

Integration Start Time [s] : 33.05
Integration End Time [s] : 137
Slope Threshold : 0.8
Height Threshold [FU] : 5
Area Threshold : 0.1
Width Threshold [s] : 0.6
Baseline Plateau [s] : 0.5

Filter Settings

Filter Width [s] : 0.5
Polynomial Order : 4

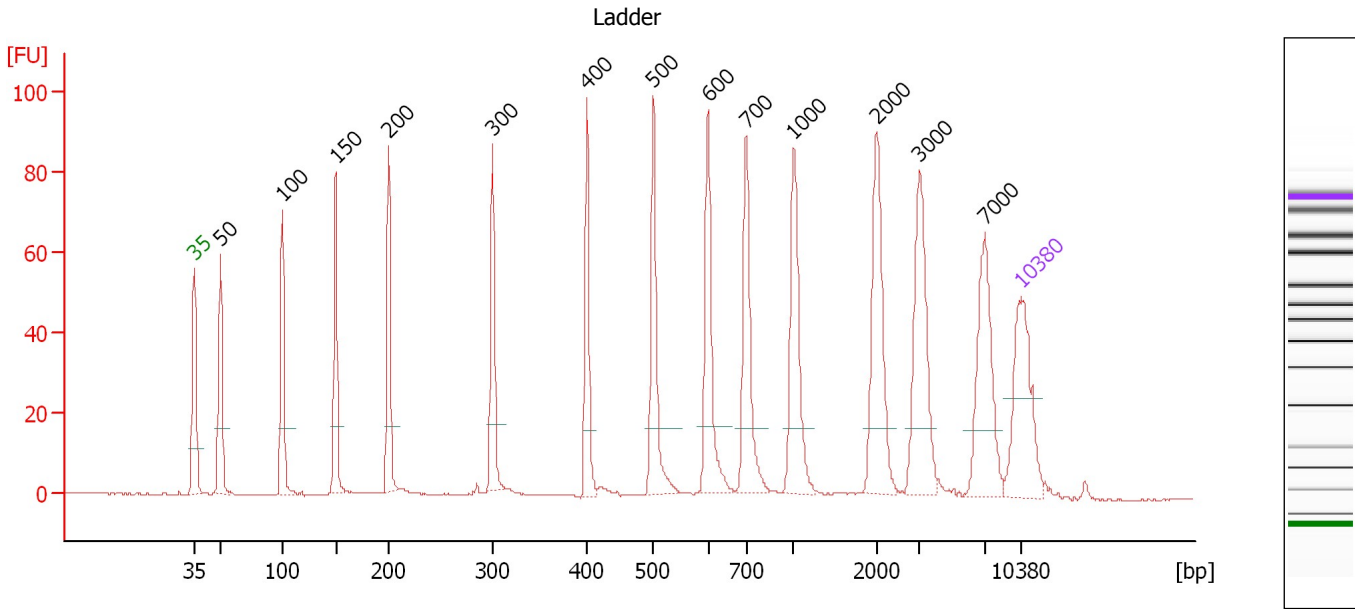
Ladder

Ladder Peak	Size	Area
1	35	160
2	50	210
3	100	208
4	150	221
5	200	242
6	300	270
7	400	305
8	500	306
9	600	336
10	700	321
11	1000	366
12	2000	413
13	3000	411
14	7000	400
15	10380	214

Assay Class: High Sensitivity DNA Assay
 Data Path: C:\...ents and Settings\Bioanalyzer\2012-08-01\2012-08-01_003.xad

Created: 8/1/2012 1:03:17 PM
 Modified: 8/1/2012 4:32:06 PM

Electropherogram Summary



Overall Results for Ladder

Noise: 0.1

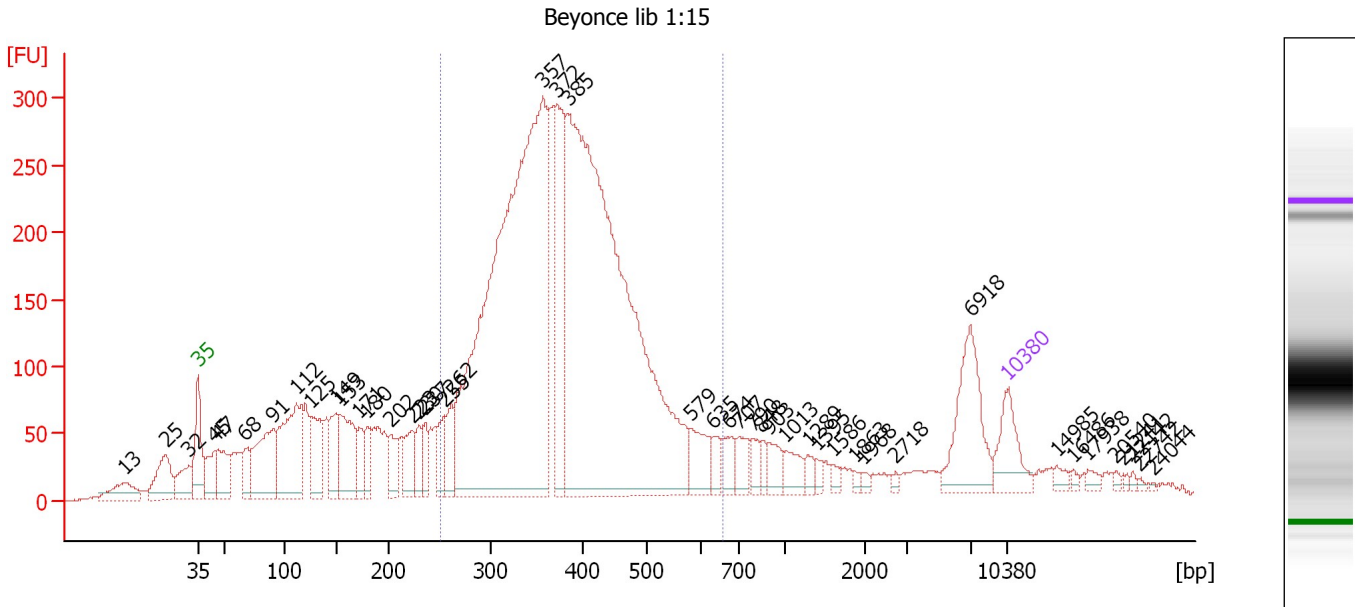
Peak table for Ladder

Peak	Size [bp]	Conc. [pg/μl]	Molarity [pmol/l]	Observations
1	35	125.00	5,411.3	Lower Marker
2	50	150.00	4,545.5	Ladder Peak
3	100	150.00	2,272.7	Ladder Peak
4	150	150.00	1,515.2	Ladder Peak
5	200	150.00	1,136.4	Ladder Peak
6	300	150.00	757.6	Ladder Peak
7	400	150.00	568.2	Ladder Peak
8	500	150.00	454.5	Ladder Peak
9	600	150.00	378.8	Ladder Peak
10	700	150.00	324.7	Ladder Peak
11	1,000	150.00	227.3	Ladder Peak
12	2,000	150.00	113.6	Ladder Peak
13	3,000	150.00	75.8	Ladder Peak
14	7,000	150.00	32.5	Ladder Peak
15	10,380	75.00	10.9	Upper Marker

Assay Class: High Sensitivity DNA Assay
 Data Path: C:\...ents and Settings\Bioanalyzer\2012-08-01\2012-08-01_003.xad

Created: 8/1/2012 1:03:17 PM
 Modified: 8/1/2012 4:32:06 PM

Electropherogram Summary Continued ...



Overall Results for sample 1 : Beyonce lib 1:15

Number of peaks found: 45 Corr. Area 1: 5,360.1
 Noise: 1.2

Peak table for sample 1 : Beyonce lib 1:15


Peak	Size [bp]	Conc. [pg/μl]	Molarity [pmol/l]	Observations
1	13	0.00	0.0	
2	25	0.00	0.0	
3	32	0.00	0.0	
4	35	125.00	5,411.3	Lower Marker
5	45	98.43	3,336.7	
6	47	110.86	3,606.6	
7	68	72.79	1,630.6	
8	91	255.54	4,276.6	
9	112	347.64	4,724.1	
10	125	153.12	1,851.6	
11	149	104.14	1,056.8	
12	153	181.55	1,792.9	
13	171	61.83	546.3	
14	180	65.12	548.9	
15	202	71.68	536.4	
16	223	78.46	532.0	
17	230	55.70	366.5	
18	237	52.10	333.7	
19	255	66.58	395.0	
20	262	75.12	434.1	
21	357	1,955.60	8,297.8	
22	372	333.88	1,361.7	
23	385	1,974.37	7,774.2	
24	579	77.80	203.4	
25	635	37.14	88.7	
26	674	38.53	86.6	

Assay Class: High Sensitivity DNA Assay
 Data Path: C:\...ents and Settings\Bioanalyzer\2012-08-01\2012-08-01_003.xad


Created: 8/1/2012 1:03:17 PM
 Modified: 8/1/2012 4:32:06 PM

Electropherogram Summary Continued ...

... Peak table for sample 1 : Beyonce lib 1:15

Peak	Size [bp]	Conc. [pg/μl]	Molarity [pmol/l]	Observations
27	707	46.82	100.3	
28	790	30.41	58.3	
29	848	19.28	34.4	
30	903	39.99	67.1	
31	1,013	39.34	58.9	
32	1,289	17.03	20.0	
33	1,395	12.72	13.8	
34	1,586	14.03	13.4	
35	1,863	6.58	5.3	
36	1,968	7.23	5.6	
37	2,718	5.69	3.2	
38	6,918	167.39	36.7	
39	 10,380	75.00	10.9	Upper Marker
40	14,985	0.00	0.0	
41	16,486	0.00	0.0	
42	17,938	0.00	0.0	
43	20,540	0.00	0.0	
44	21,241	0.00	0.0	
45	22,142	0.00	0.0	
46	22,742	0.00	0.0	
47	24,044	0.00	0.0	

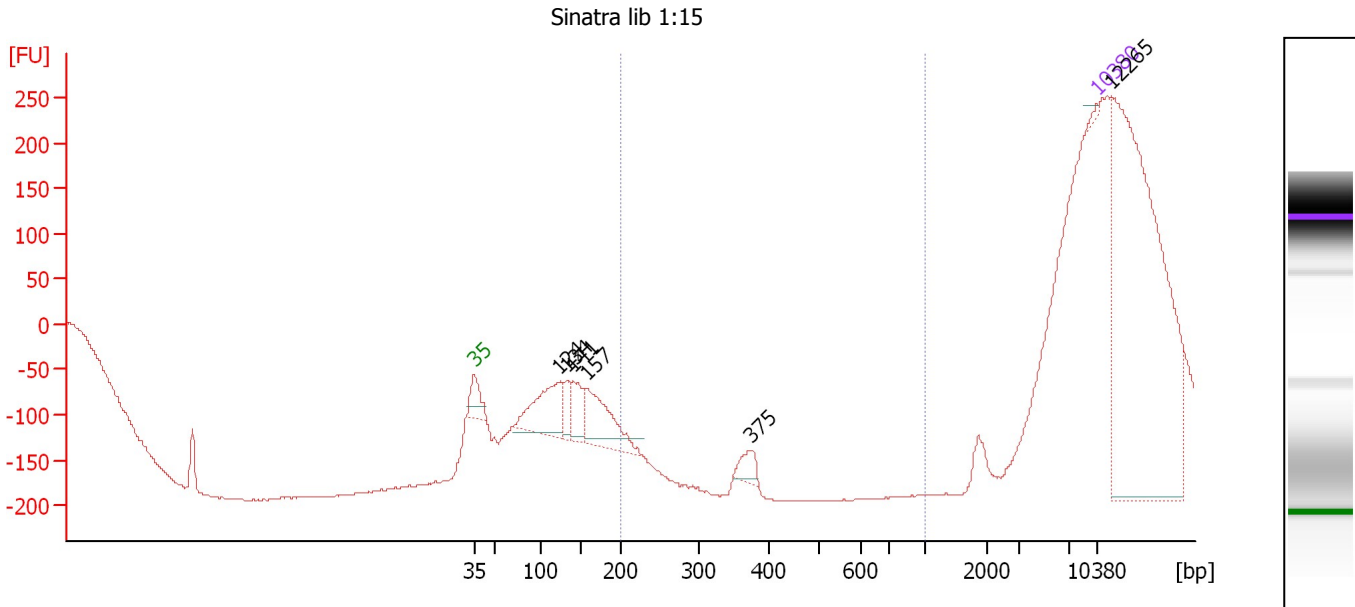
Region table for sample 1 : Beyonce lib 1:15

From [bp]	To [bp]	Average Size [bp]	Molarity [pmol/l]	Conc. [pg/μl]	Corr. Area	% of Total	Size distribution in CV [%]	Color
252	656	390	19,109.0	4,657.12	5,360.1	63	20.4	

Assay Class: High Sensitivity DNA Assay
 Data Path: C:\...ents and Settings\Bioanalyzer\2012-08-01\2012-08-01_003.xad

Created: 8/1/2012 1:03:17 PM
 Modified: 8/1/2012 4:32:06 PM

Electropherogram Summary Continued ...



Overall Results for sample 2 : Sinatra lib 1:15

Number of peaks found: 6 Corr. Area 1: 0.0
 Noise: 0.5

Peak table for sample 2 : Sinatra lib 1:15

Peak	Size [bp]	Conc. [pg/μl]	Molarity [pmol/l]	Observations
1	35	125.00	5,411.3	Lower Marker
2	124	2,914.75	35,718.3	
3	134	750.27	8,509.3	
4	141	1,356.48	14,587.7	
5	157	2,930.74	28,305.2	
6	375	600.32	2,427.4	
7	10,380	75.00	10.9	Upper Marker
8	12,265	0.00	0.0	

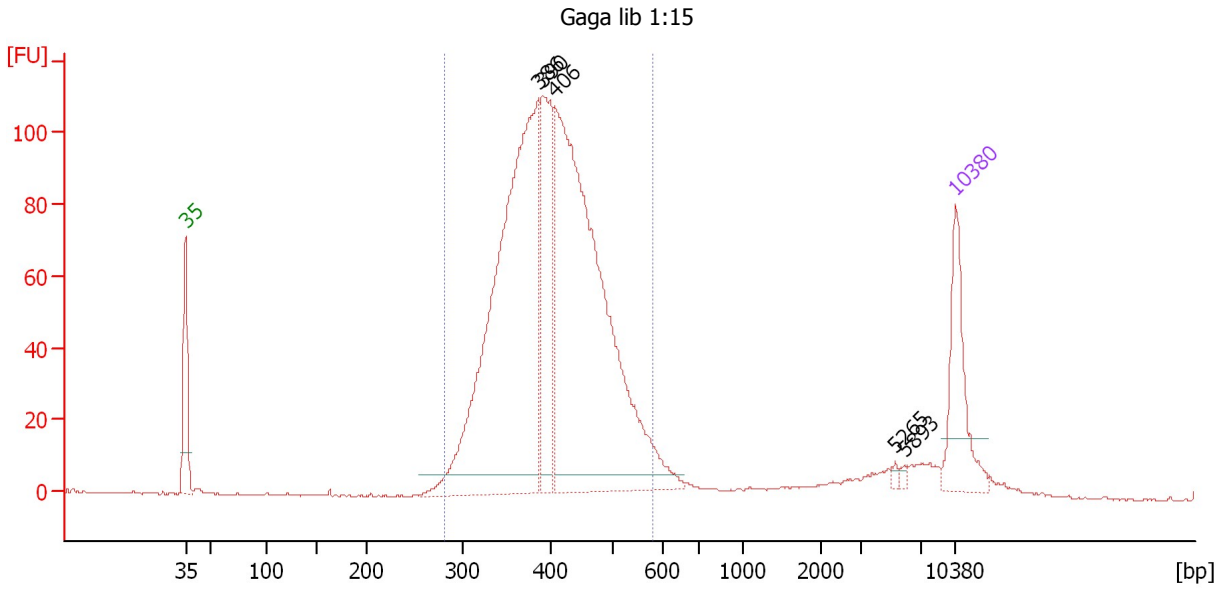
Region table for sample 2 : Sinatra lib 1:15

From [bp]	To [bp]	Average Size [bp]	Molarity [pmol/l]	Conc. [pg/μl]	Corr. Area	% of Total	Size distribution in CV [%]	Color
200	1,000	0	0.0	0.00	0.0	0	0.0	Blue

Assay Class: High Sensitivity DNA Assay
 Data Path: C:\...ents and Settings\Bioanalyzer\2012-08-01\2012-08-01_003.xad

Created: 8/1/2012 1:03:17 PM
 Modified: 8/1/2012 4:32:06 PM

Electropherogram Summary Continued ...



Overall Results for sample 3 : Gaga lib 1:15

Number of peaks found: 5 Corr. Area 1: 1,547.3
 Noise: 0.3

Peak table for sample 3 : Gaga lib 1:15

Peak	Size [bp]	Conc. [pg/μl]	Molarity [pmol/l]	Observations
1	35	125.00	5,411.3	Lower Marker
2	386	688.14	2,703.7	
3	390	182.99	710.0	
4	406	728.75	2,717.8	
5	5,265	3.15	0.9	
6	5,893	3.55	0.9	
7	10,380	75.00	10.9	Upper Marker

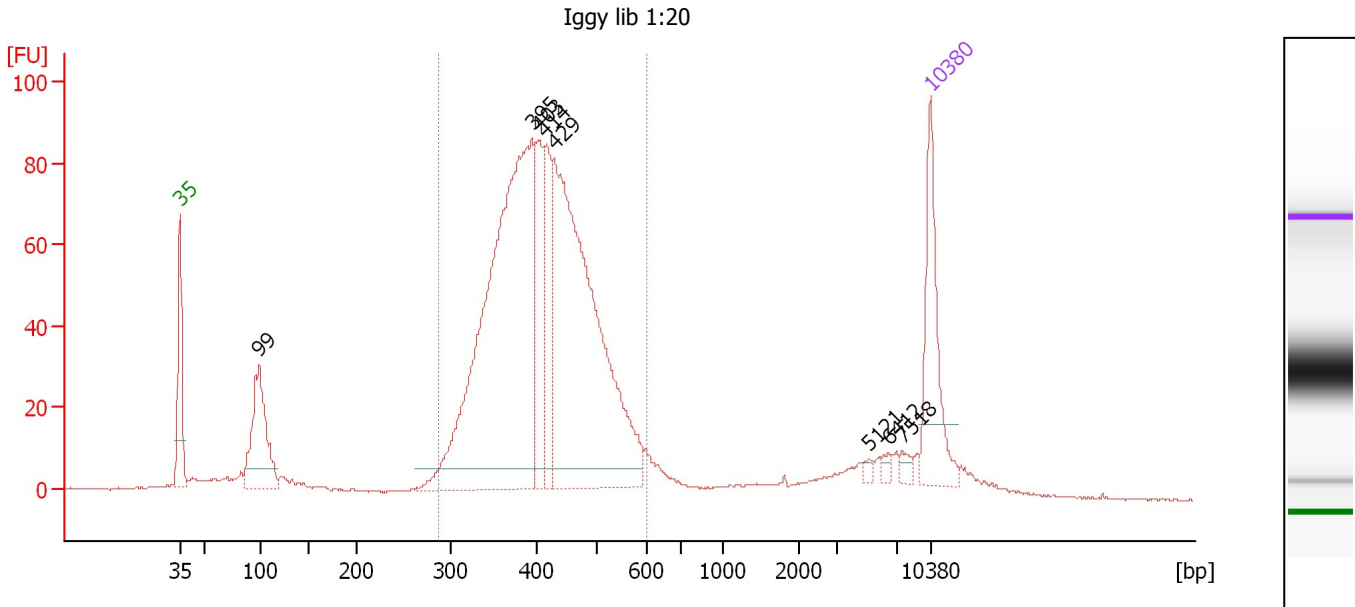
Region table for sample 3 : Gaga lib 1:15

From [bp]	To [bp]	Average Size [bp]	Molarity [pmol/l]	Conc. [pg/μl]	Corr. Area	% of Total	Size distribution in CV [%]	Color
282	577	407	6,160.1	1,612.19	1,547.3	91	14.8	Blue

Assay Class: High Sensitivity DNA Assay
 Data Path: C:\...ents and Settings\Bioanalyzer\2012-08-01\2012-08-01_003.xad

Created: 8/1/2012 1:03:17 PM
 Modified: 8/1/2012 4:32:06 PM

Electropherogram Summary Continued ...



Overall Results for sample 4 : Iggg lib 1:20

Number of peaks found: 8 Corr. Area 1: 1,257.7
 Noise: 0.2

Peak table for sample 4 : Iggg lib 1:20

Peak	Size [bp]	Conc. [pg/μl]	Molarity [pmol/l]	Observations
1	35	125.00	5,411.3	Lower Marker
2	99	135.19	2,064.8	
3	395	578.84	2,219.1	
4	403	89.31	335.8	
5	414	86.70	317.7	
6	429	472.53	1,667.3	
7	5,121	3.83	1.1	
8	6,412	4.49	1.1	
9	7,518	6.19	1.2	
10	10,380	75.00	10.9	Upper Marker

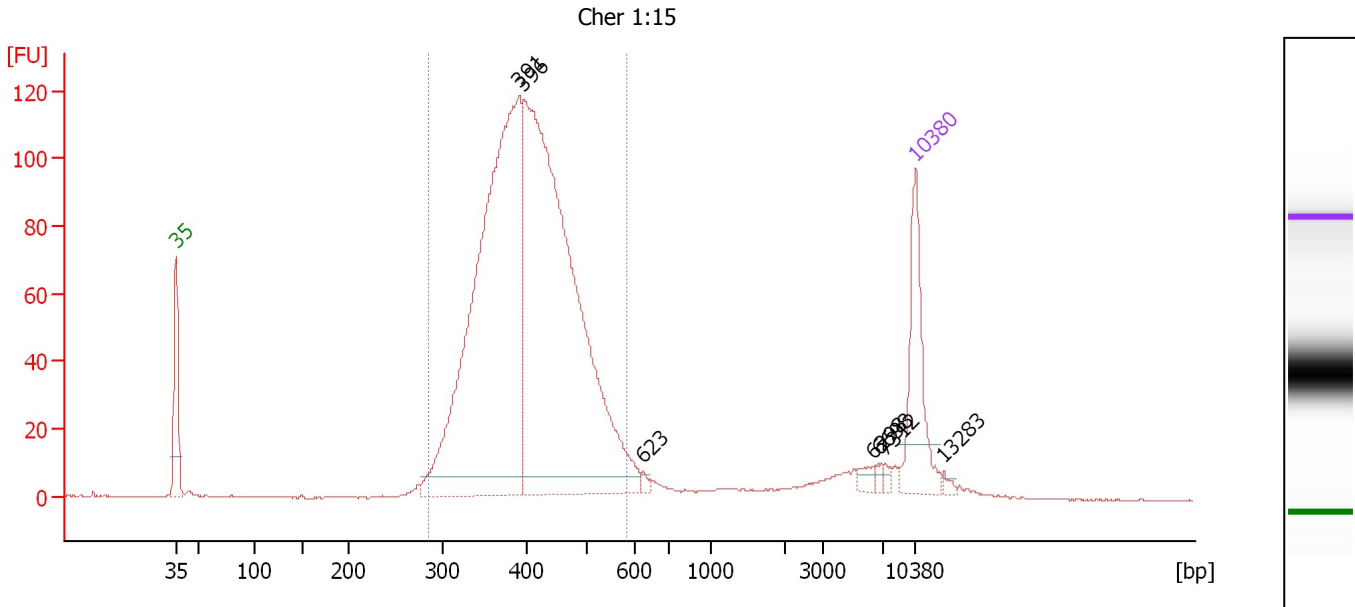
Region table for sample 4 : Iggg lib 1:20

From [bp]	To [bp]	Average Size [bp]	Molarity [pmol/l]	Conc. [pg/μl]	Corr. Area	% of Total	Size distribution in CV [%]	Color
287	601	417	4,810.3	1,285.09	1,257.7	80	15.7	Blue

Assay Class: High Sensitivity DNA Assay
 Data Path: C:\...ents and Settings\Bioanalyzer\2012-08-01\2012-08-01_003.xad

Created: 8/1/2012 1:03:17 PM
 Modified: 8/1/2012 4:32:06 PM

Electropherogram Summary Continued ...



Overall Results for sample 5 : Cher 1:15

Number of peaks found: 7 Corr. Area 1: 1,618.5
 Noise: 0.2

Peak table for sample 5 : Cher 1:15

Peak	Size [bp]	Conc. [pg/μl]	Molarity [pmol/l]	Observations
1	35	125.00	5,411.3	Lower Marker
2	391	694.49	2,690.9	
3	396	779.67	2,982.4	
4	623	3.99	9.7	
5	6,298	7.51	1.8	
6	6,698	3.36	0.8	
7	7,312	3.98	0.8	
8	10,380	75.00	10.9	Upper Marker
9	13,283	0.00	0.0	

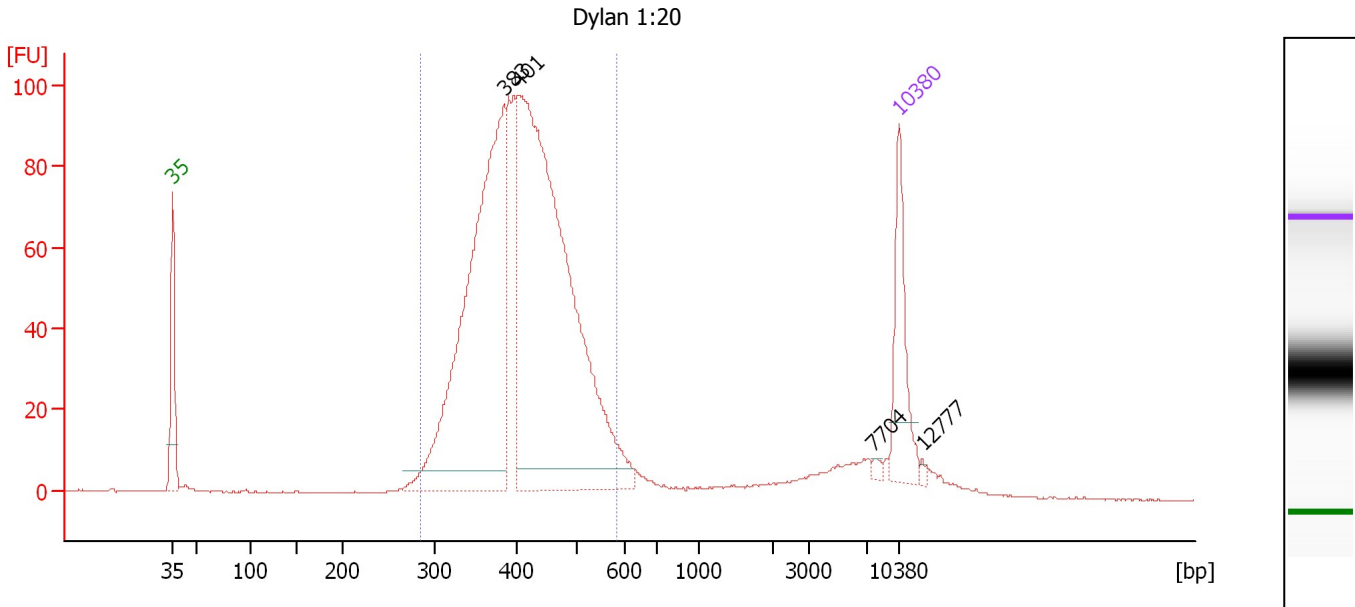
Region table for sample 5 : Cher 1:15

From [bp]	To [bp]	Average Size [bp]	Molarity [pmol/l]	Conc. [pg/μl]	Corr. Area	% of Total	Size distribution in CV [%]	Color
285	583	409	5,679.7	1,493.86	1,618.5	90	14.9	Blue

Assay Class: High Sensitivity DNA Assay
 Data Path: C:\...ents and Settings\Bioanalyzer\2012-08-01\2012-08-01_003.xad

Created: 8/1/2012 1:03:17 PM
 Modified: 8/1/2012 4:32:06 PM

Electropherogram Summary Continued ...



Overall Results for sample 6 : Dylan 1:20

Number of peaks found: 4 Corr. Area 1: 1,369.1
 Noise: 0.2

Peak table for sample 6 : Dylan 1:20

Peak	Size [bp]	Conc. [pg/μl]	Molarity [pmol/l]	Observations
1	35	125.00	5,411.3	Lower Marker
2	383	622.93	2,461.6	
3	401	854.00	3,225.9	
4	7,704	4.08	0.8	
5	10,380	75.00	10.9	Upper Marker
6	12,777	0.00	0.0	

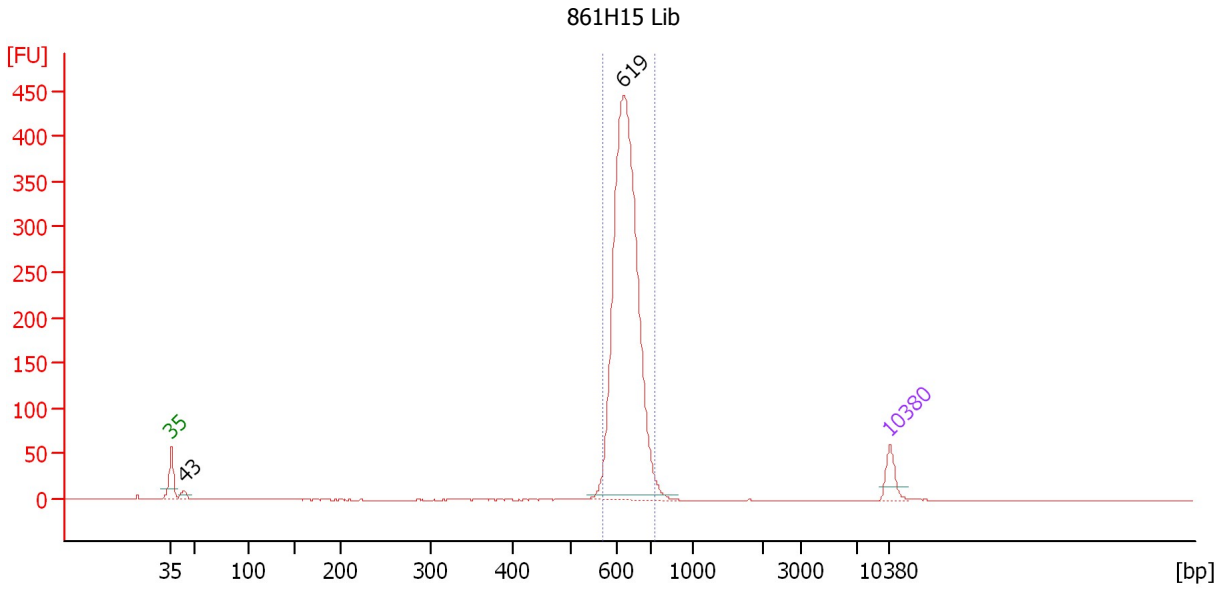
Region table for sample 6 : Dylan 1:20

From [bp]	To [bp]	Average Size [bp]	Molarity [pmol/l]	Conc. [pg/μl]	Corr. Area	% of Total	Size distribution in CV [%]	Color
285	586	414	6,113.7	1,624.44	1,369.1	89	15.1	Blue

Assay Class: High Sensitivity DNA Assay
 Data Path: C:\...ents and Settings\Bioanalyzer\2012-08-01\2012-08-01_003.xad

Created: 8/1/2012 1:03:17 PM
 Modified: 8/1/2012 4:32:06 PM

Electropherogram Summary Continued ...



Overall Results for sample 7 : 861H15 Lib

Number of peaks found: 2 Corr. Area 1: 1,373.3
 Noise: 0.1

Peak table for sample 7 : 861H15 Lib

Peak	Size [bp]	Conc. [pg/μl]	Molarity [pmol/l]	Observations
1	35	125.00	5,411.3	Lower Marker
2	43	42.21	1,471.8	
3	619	2,466.01	6,033.8	
4	10,380	75.00	10.9	Upper Marker

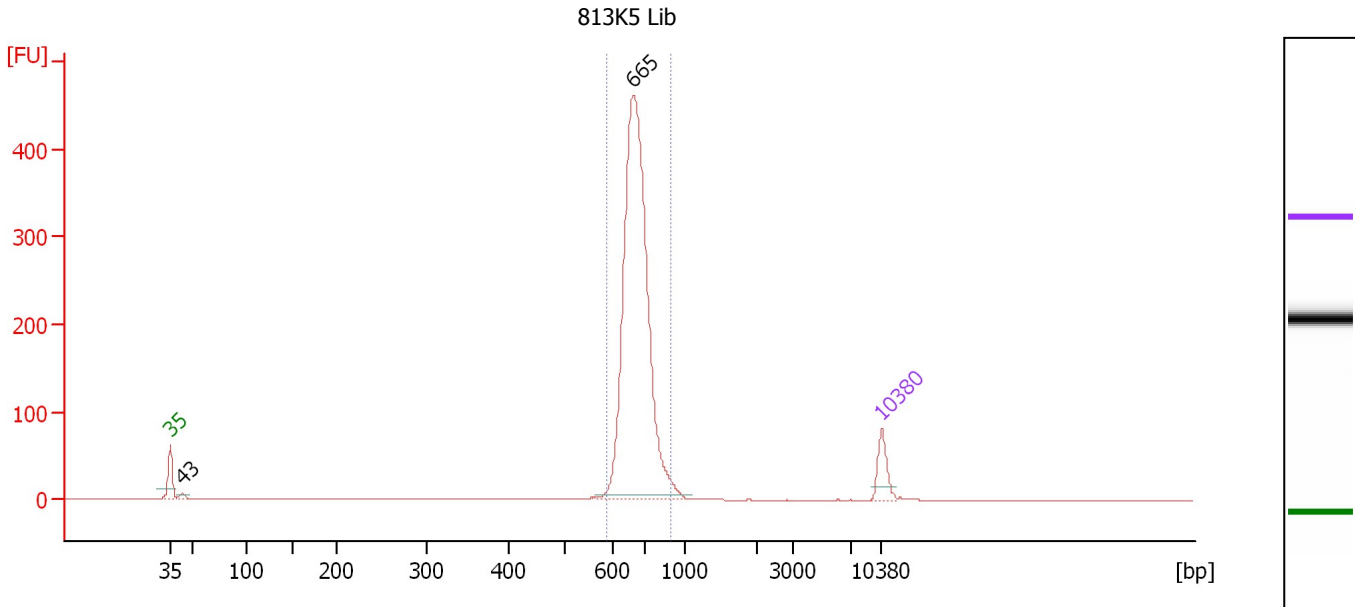
Region table for sample 7 : 861H15 Lib

From [bp]	To [bp]	Average Size [bp]	Molarity [pmol/l]	Conc. [pg/μl]	Corr. Area	% of Total	Size distribution in CV [%]	Color
571	725	628	5,842.0	2,416.04	1,373.3	95	4.8	Blue

Assay Class: High Sensitivity DNA Assay
 Data Path: C:\...ents and Settings\Bioanalyzer\2012-08-01\2012-08-01_003.xad

Created: 8/1/2012 1:03:17 PM
 Modified: 8/1/2012 4:32:06 PM

Electropherogram Summary Continued ...



Overall Results for sample 8 : 813K5 Lib

Number of peaks found: 2 Corr. Area 1: 1,394.6
 Noise: 0.1

Peak table for sample 8 : 813K5 Lib

Peak	Size [bp]	Conc. [pg/μl]	Molarity [pmol/l]	Observations
1	35	125.00	5,411.3	Lower Marker
2	43	21.58	757.1	
3	665	1,864.76	4,250.5	
4	10,380	75.00	10.9	Upper Marker

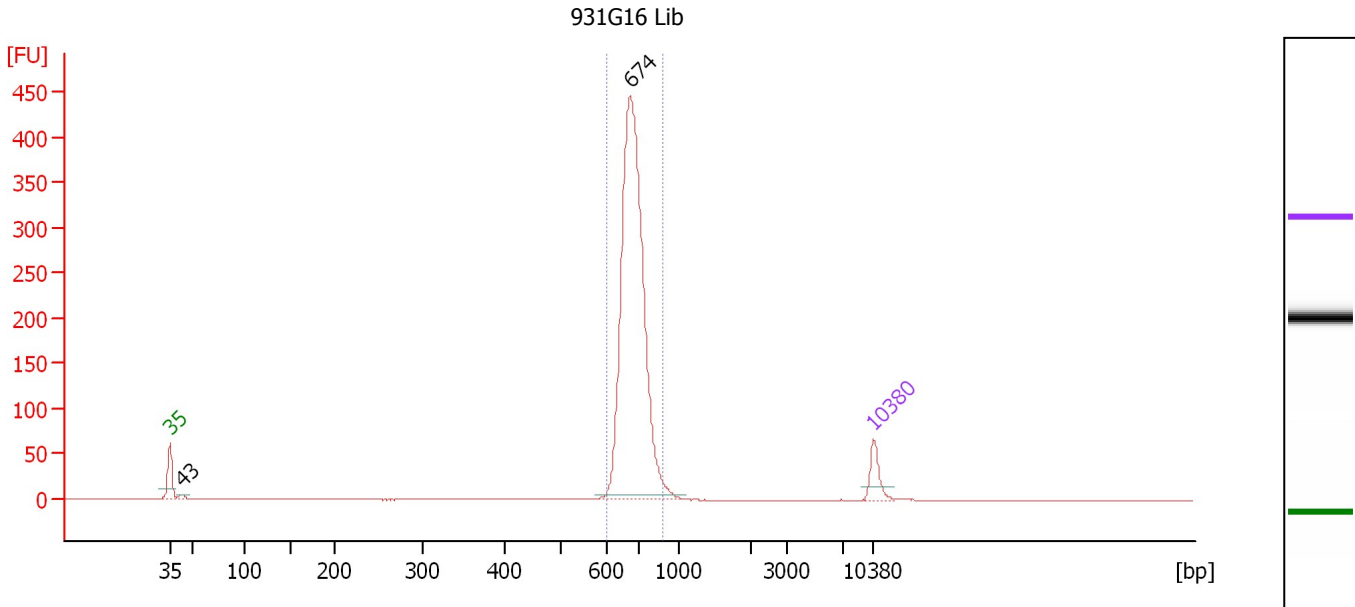
Region table for sample 8 : 813K5 Lib

From [bp]	To [bp]	Average Size [bp]	Molarity [pmol/l]	Conc. [pg/μl]	Corr. Area	% of Total	Size distribution in CV [%]	Color
588	891	681	4,108.4	1,839.55	1,394.6	94	7.1	Blue

Assay Class: High Sensitivity DNA Assay
 Data Path: C:\...ents and Settings\Bioanalyzer\2012-08-01\2012-08-01_003.xad

Created: 8/1/2012 1:03:17 PM
 Modified: 8/1/2012 4:32:06 PM

Electropherogram Summary Continued ...



Overall Results for sample 9 : 931G16 Lib

Number of peaks found: 2 Corr. Area 1: 1,237.1
 Noise: 0.1

Peak table for sample 9 : 931G16 Lib

Peak	Size [bp]	Conc. [pg/μl]	Molarity [pmol/l]	Observations
1	35	125.00	5,411.3	Lower Marker
2	43	22.21	777.7	
3	674	2,046.39	4,603.2	
4	10,380	75.00	10.9	Upper Marker

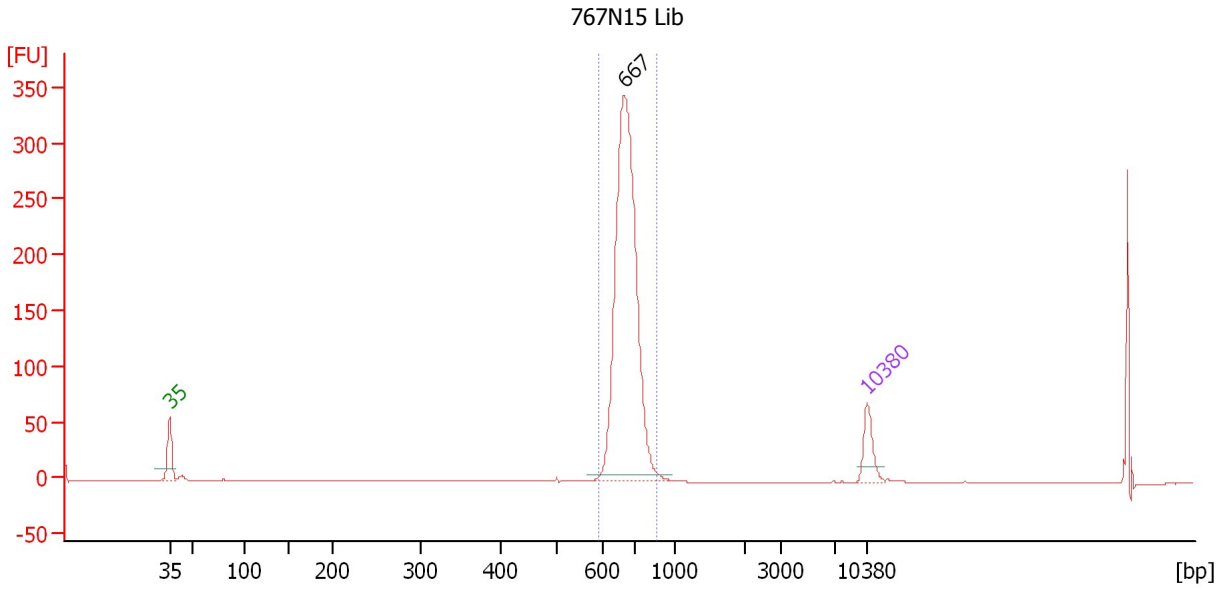
Region table for sample 9 : 931G16 Lib

From [bp]	To [bp]	Average Size [bp]	Molarity [pmol/l]	Conc. [pg/μl]	Corr. Area	% of Total	Size distribution in CV [%]	Color
599	868	688	4,420.3	2,001.75	1,237.1	95	6.5	Blue

Assay Class: High Sensitivity DNA Assay
 Data Path: C:\...ents and Settings\Bioanalyzer\2012-08-01\2012-08-01_003.xad

Created: 8/1/2012 1:03:17 PM
 Modified: 8/1/2012 4:32:06 PM

Electropherogram Summary Continued ...



Overall Results for sample 10 : 767N15 Lib

Number of peaks found: 1 Corr. Area 1: 932.6
 Noise: 0.1

Peak table for sample 10 : 767N15 Lib

Peak	Size [bp]	Conc. [pg/μl]	Molarity [pmol/l]	Observations
1	35	125.00	5,411.3	Lower Marker
2	667	1,402.28	3,183.9	
3	10,380	75.00	10.9	Upper Marker

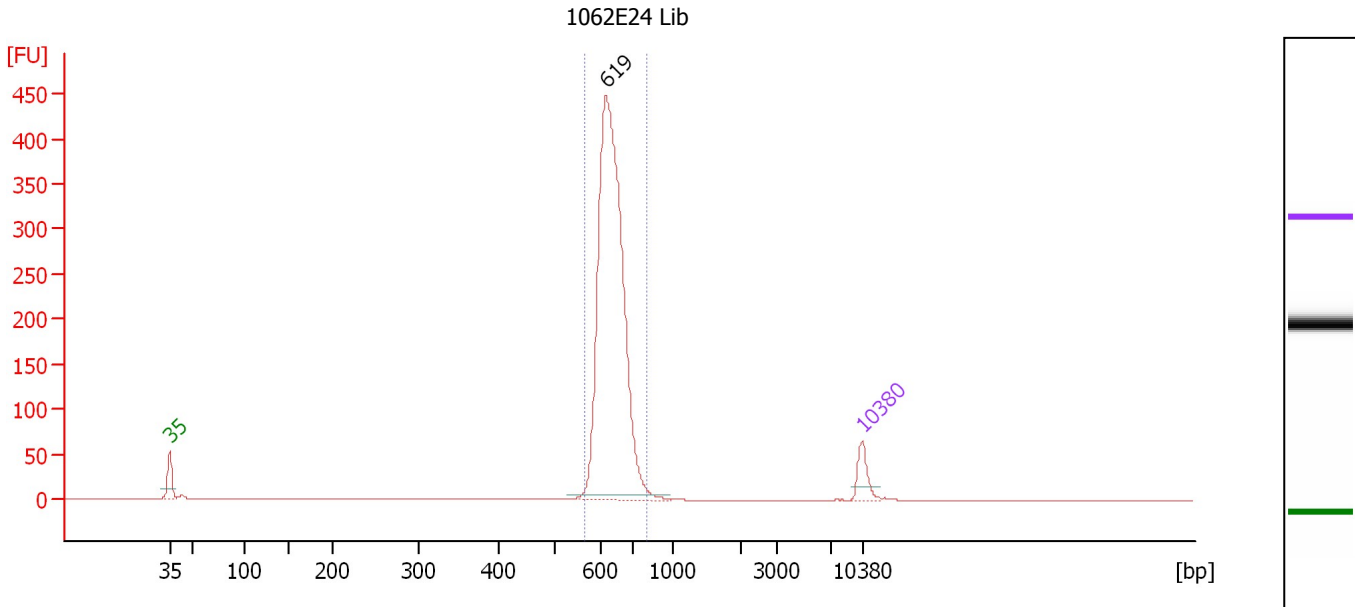
Region table for sample 10 : 767N15 Lib

From [bp]	To [bp]	Average Size [bp]	Molarity [pmol/l]	Conc. [pg/μl]	Corr. Area	% of Total	Size distribution in CV [%]	Color
591	859	679	3,119.7	1,393.97	932.6	89	5.8	Blue

Assay Class: High Sensitivity DNA Assay
 Data Path: C:\...ents and Settings\Bioanalyzer\2012-08-01\2012-08-01_003.xad

Created: 8/1/2012 1:03:17 PM
 Modified: 8/1/2012 4:32:06 PM

Electropherogram Summary Continued ...



Overall Results for sample 11 : 1062E24 Lib

Number of peaks found: 1 Corr. Area 1: 1,434.9
 Noise: 0.1

Peak table for sample 11 : 1062E24 Lib

Peak	Size [bp]	Conc. [pg/μl]	Molarity [pmol/l]	Observations
1	35	125.00	5,411.3	Lower Marker
2	619	2,159.60	5,286.0	
3	10,380	75.00	10.9	Upper Marker

Region table for sample 11 : 1062E24 Lib

From [bp]	To [bp]	Average Size [bp]	Molarity [pmol/l]	Conc. [pg/μl]	Corr. Area	% of Total	Size distribution in CV [%]	Color
566	815	638	5,123.7	2,151.96	1,434.9	97	5.7	Blue

Assay Class: High Sensitivity DNA Assay
Data Path: C:\...ents and Settings\Bioanalyzer\2012-08-01\2012-08-01_003.xad

Created: 8/1/2012 1:03:17 PM
Modified: 8/1/2012 4:32:06 PM

Gel Image

