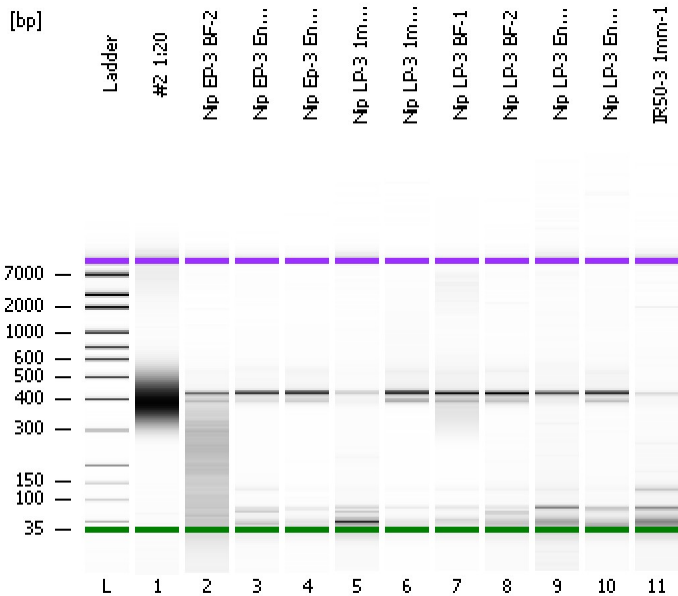


Assay Class: High Sensitivity DNA Assay
Data Path: C:\...ents and Settings\Bioanalyzer\2012-08-01\2012-08-01_004.xad

Created: 8/1/2012 2:06:01 PM
Modified: 8/1/2012 2:51:19 PM

Electrophoresis File Run Summary



Instrument Information:

Instrument Name: DE13701086 Firmware: C.01.069
Serial#: DE13701086 Type: G2938B

Assay Information:

Assay Origin Path: C:\Program Files\Agilent\2100 bioanalyzer\2100 expert\assays\dsDNA\High Sensitivity DNA.xsy
Assay Class: High Sensitivity DNA Assay
Version: 1.03
Assay Comments: Copyright © 2003-2010 Agilent Technologies

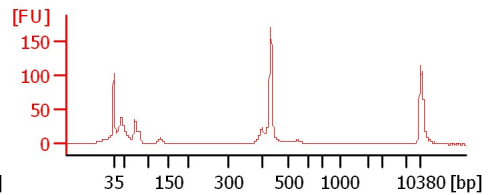
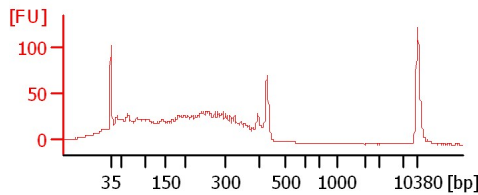
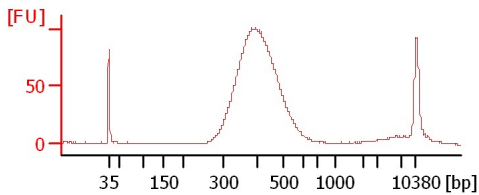
Chip Information:

Chip Lot #:
Reagent Kit Lot #:
Chip Comments:

#2 1:20

Nip EP-3 BF-2

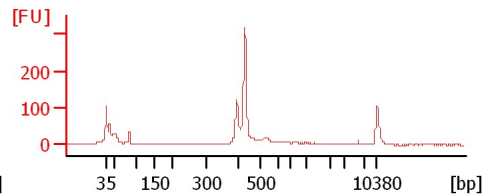
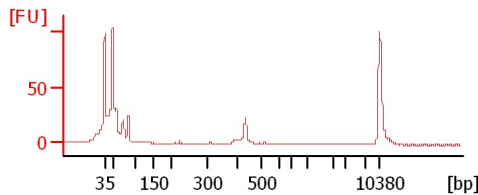
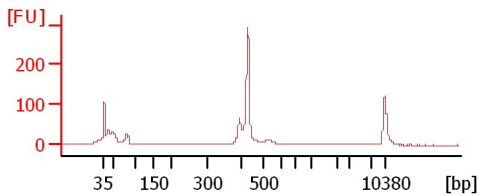
Nip EP-3 Endo-1



Nip Ep-3 Endo-2

Nip LP-3 1mm-1

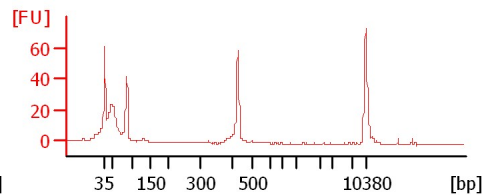
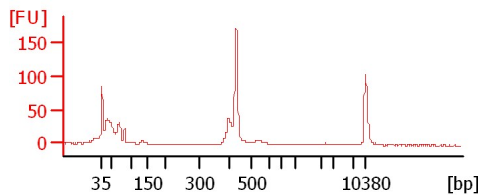
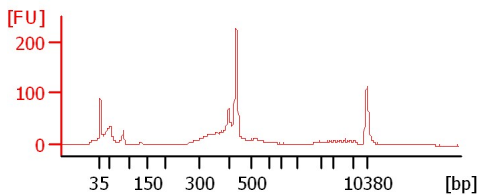
Nip LP-3 1mm-2



Nip LP-3 BF-1

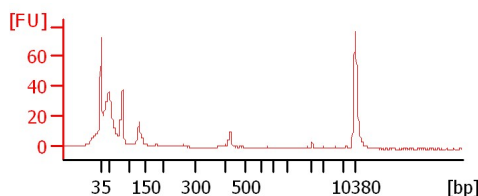
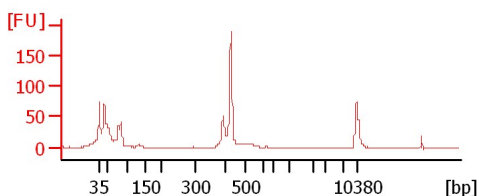
Nip LP-3 BF-2

Nip LP-3 Endo-1



Nip LP-3 Endo-2

IR50-3 1mm-1



Assay Class: High Sensitivity DNA Assay
Data Path: C:\...ents and Settings\Bioanalyzer\2012-08-01\2012-08-01_004.xad

Created: 8/1/2012 2:06:01 PM
Modified: 8/1/2012 2:51:19 PM

Electrophoresis File Run Summary (Chip Summary)

Sample Name	Sample Comment	Rest. Digest	Status	Observation	Result Label	Result Color
#2 1:20		<input type="checkbox"/>	✓			
Nip EP-3 BF-2		<input type="checkbox"/>	✓			
Nip EP-3 Endo-1		<input type="checkbox"/>	✓			
Nip Ep-3 Endo-2		<input type="checkbox"/>	✓			
Nip LP-3 1mm-1		<input type="checkbox"/>	✓			
Nip LP-3 1mm-2		<input type="checkbox"/>	✓			
Nip LP-3 BF-1		<input type="checkbox"/>	✓			
Nip LP-3 BF-2		<input type="checkbox"/>	✓			
Nip LP-3 Endo-1		<input type="checkbox"/>	✓			
Nip LP-3 Endo-2		<input type="checkbox"/>	✓			
IR50-3 1mm-1		<input type="checkbox"/>	✓			
Ladder		<input type="checkbox"/>	✓			

Chip Lot #

Reagent Kit Lot #

Chip Comments :

Assay Class: High Sensitivity DNA Assay
Data Path: C:\...ents and Settings\Bioanalyzer\2012-08-01\2012-08-01_004.xad

Created: 8/1/2012 2:06:01 PM
Modified: 8/1/2012 2:51:19 PM

Electrophoresis Assay Details

General Analysis Settings

Number of Available Sample and Ladder Wells (Max.) : 12
Minimum Visible Range [s] : 32
Maximum Visible Range [s] : 138
Start Analysis Time Range [s] : 33
End Analysis Time Range [s] : 137.5
Ladder Concentration [pg/μl] : 1950
Uses Standard Area for Ladder Fragments
Lower Marker Concentration [pg/μl] : 125
Upper Marker Concentration [pg/μl] : 75
Used Upper Marker for Quantitation
Standard Curve Fit is Point to Point
Show Data Aligned to Lower and Upper Marker

Integrator Settings

Integration Start Time [s] : 33.05
Integration End Time [s] : 137
Slope Threshold : 0.8
Height Threshold [FU] : 5
Area Threshold : 0.1
Width Threshold [s] : 0.6
Baseline Plateau [s] : 0.5

Filter Settings

Filter Width [s] : 0.5
Polynomial Order : 4

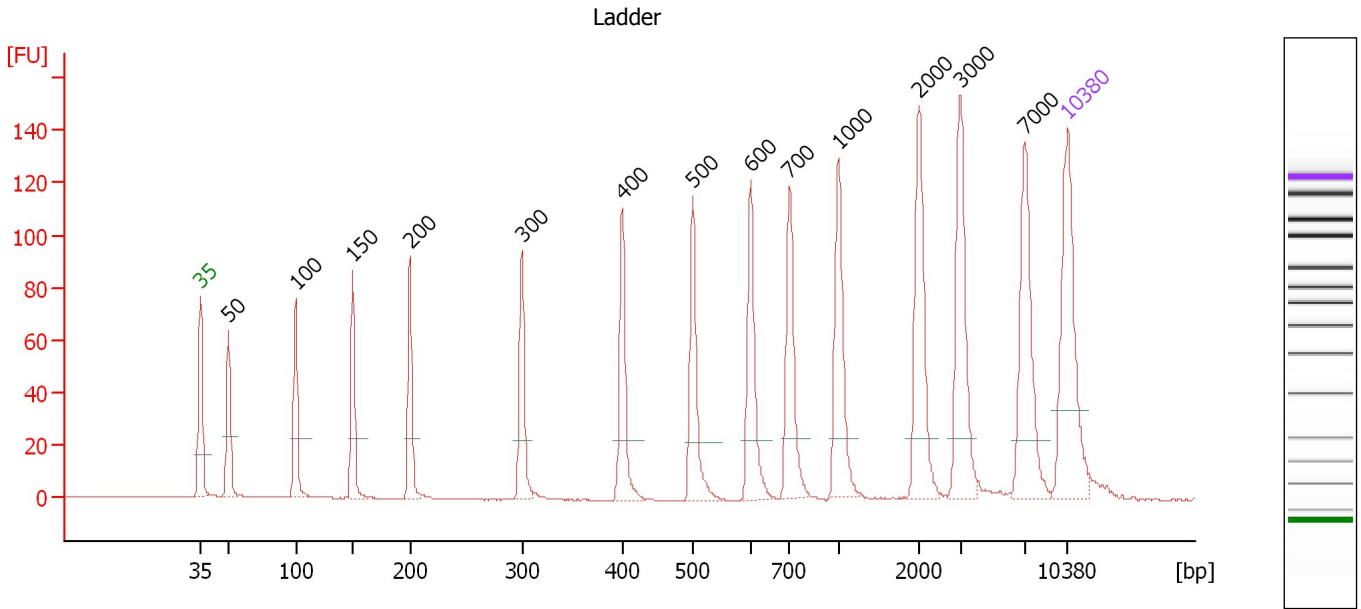
Ladder

Ladder Peak	Size	Area
1	35	160
2	50	210
3	100	208
4	150	221
5	200	242
6	300	270
7	400	305
8	500	306
9	600	336
10	700	321
11	1000	366
12	2000	413
13	3000	411
14	7000	400
15	10380	214

Assay Class: High Sensitivity DNA Assay
 Data Path: C:\...ents and Settings\Bioanalyzer\2012-08-01\2012-08-01_004.xad

Created: 8/1/2012 2:06:01 PM
 Modified: 8/1/2012 2:51:19 PM

Electropherogram Summary



Overall Results for Ladder

Noise: 0.2

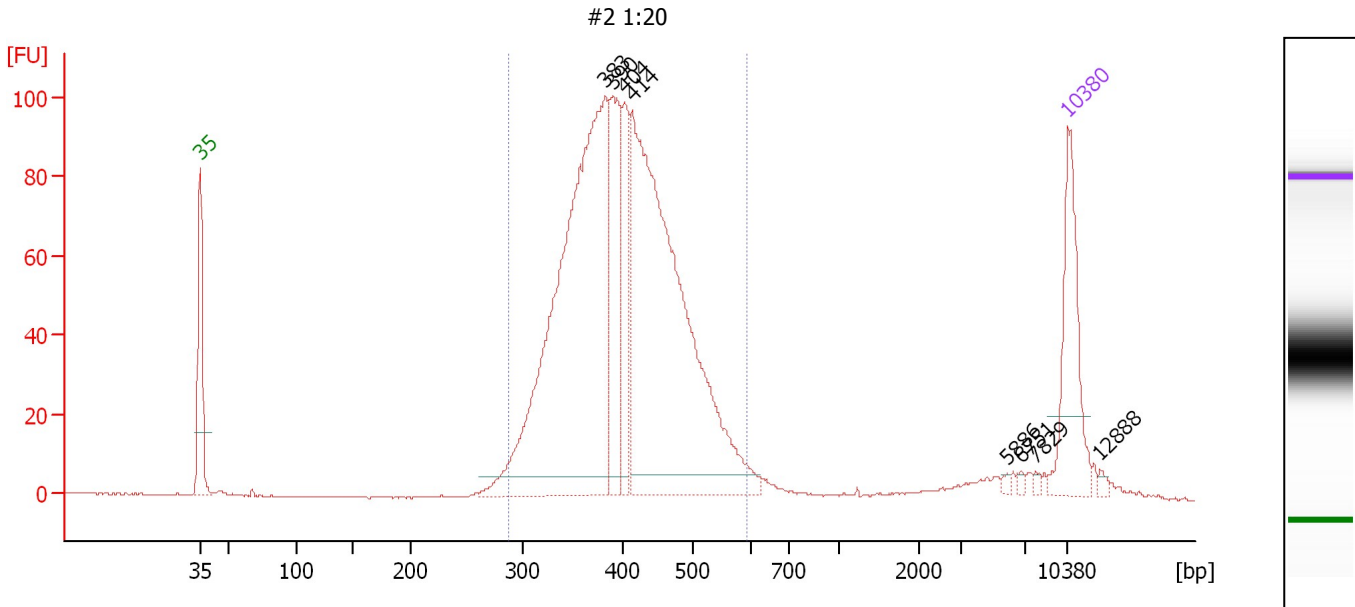
Peak table for Ladder

Peak	Size [bp]	Conc. [pg/μl]	Molarity [pmol/l]	Observations
1	35	125.00	5,411.3	Lower Marker
2	50	150.00	4,545.5	Ladder Peak
3	100	150.00	2,272.7	Ladder Peak
4	150	150.00	1,515.2	Ladder Peak
5	200	150.00	1,136.4	Ladder Peak
6	300	150.00	757.6	Ladder Peak
7	400	150.00	568.2	Ladder Peak
8	500	150.00	454.5	Ladder Peak
9	600	150.00	378.8	Ladder Peak
10	700	150.00	324.7	Ladder Peak
11	1,000	150.00	227.3	Ladder Peak
12	2,000	150.00	113.6	Ladder Peak
13	3,000	150.00	75.8	Ladder Peak
14	7,000	150.00	32.5	Ladder Peak
15	10,380	75.00	10.9	Upper Marker

Assay Class: High Sensitivity DNA Assay
 Data Path: C:\...ents and Settings\Bioanalyzer\2012-08-01\2012-08-01_004.xad

Created: 8/1/2012 2:06:01 PM
 Modified: 8/1/2012 2:51:19 PM

Electropherogram Summary Continued ...



Overall Results for sample 1 : #2 1:20

Number of peaks found: 8 Corr. Area 1: 1,467.8
 Noise: 0.2

Peak table for sample 1 : #2 1:20

Peak	Size [bp]	Conc. [pg/μl]	Molarity [pmol/l]	Observations
1	35	125.00	5,411.3	Lower Marker
2	383	579.55	2,291.2	
3	390	115.06	446.7	
4	404	78.75	295.5	
5	414	552.00	2,021.6	
6	5,886	2.40	0.6	
7	6,751	2.13	0.5	
8	7,829	2.14	0.4	
9	10,380	75.00	10.9	Upper Marker
10	12,888	0.00	0.0	

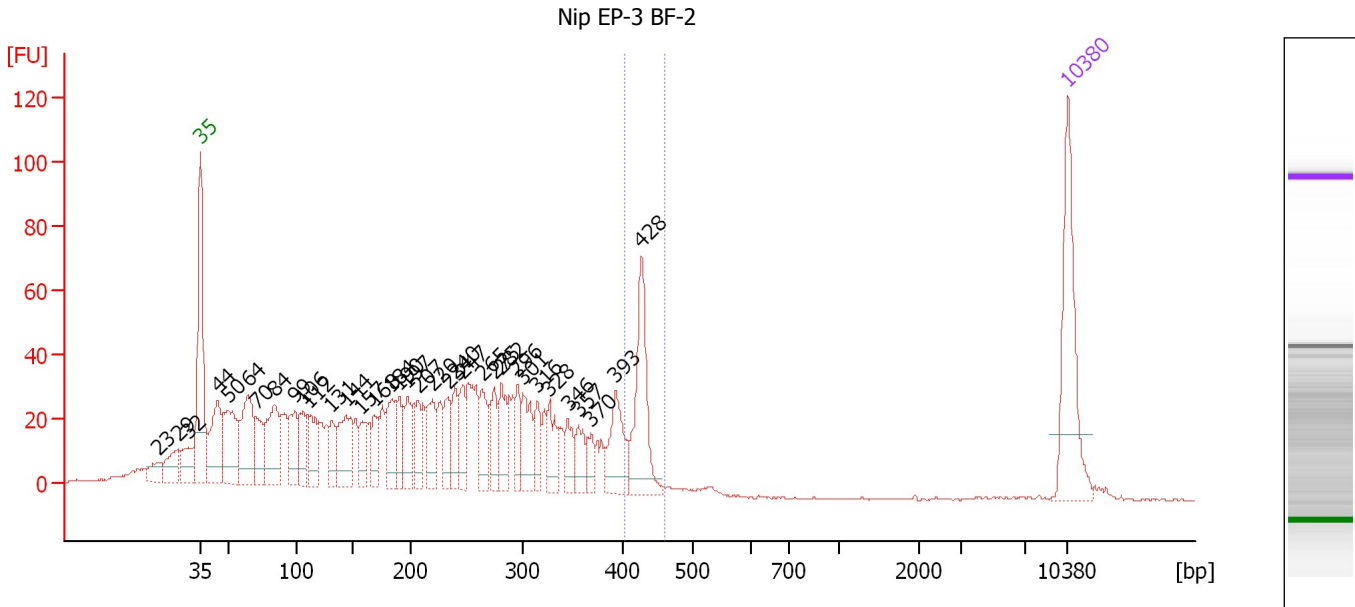
Region table for sample 1 : #2 1:20

From [bp]	To [bp]	Average Size [bp]	Molarity [pmol/l]	Conc. [pg/μl]	Corr. Area	% of Total	Size distribution in CV [%]	Color
289	595	408	5,170.7	1,355.66	1,467.8	93	15.2	Blue

Assay Class: High Sensitivity DNA Assay
 Data Path: C:\...ents and Settings\Bioanalyzer\2012-08-01\2012-08-01_004.xad

Created: 8/1/2012 2:06:01 PM
 Modified: 8/1/2012 2:51:19 PM

Electropherogram Summary Continued ...



Overall Results for sample 2 : Nip EP-3 BF-2

Number of peaks found: 35 Corr. Area 1: 99.9
 Noise: 0.2

Peak table for sample 2 : Nip EP-3 BF-2

Peak	Size [bp]	Conc. [pg/μl]	Molarity [pmol/l]	Observations
1	23	0.00	0.0	
2	29	0.00	0.0	
3	32	0.00	0.0	
4	35	125.00	5,411.3	Lower Marker
5	44	82.64	2,828.6	
6	50	86.61	2,643.6	
7	64	86.37	2,031.5	
8	70	40.95	883.5	
9	84	78.79	1,415.8	
10	99	44.73	683.0	
11	106	41.93	600.1	
12	112	42.54	574.6	
13	131	27.39	316.6	
14	144	64.23	677.5	
15	157	25.89	250.3	
16	168	28.78	258.8	
17	184	43.20	356.4	
18	190	31.07	247.8	
19	197	41.50	318.7	
20	207	28.64	209.4	
21	220	40.64	279.7	
22	234	30.36	196.5	
23	240	32.31	204.3	
24	247	30.58	187.5	
25	265	36.11	206.8	
26	275	28.57	157.4	

Assay Class: High Sensitivity DNA Assay
 Data Path: C:\...ents and Settings\Bioanalyzer\2012-08-01\2012-08-01_004.xad


Created: 8/1/2012 2:06:01 PM
 Modified: 8/1/2012 2:51:19 PM

Electropherogram Summary Continued ...

... Peak table for sample 2 : Nip EP-3 BF-2

Peak	Size [bp]	Conc. [pg/μl]	Molarity [pmol/l]	Observations
27	282	36.86	198.1	
28	296	27.88	142.5	
29	301	39.37	198.2	
30	316	22.73	109.0	
31	328	27.51	127.2	
32	346	22.37	98.0	
33	357	21.79	92.5	
34	370	12.53	51.3	
35	393	48.90	188.3	
36	428	84.36	298.7	
37	▶ 10,380	75.00	10.9	Upper Marker

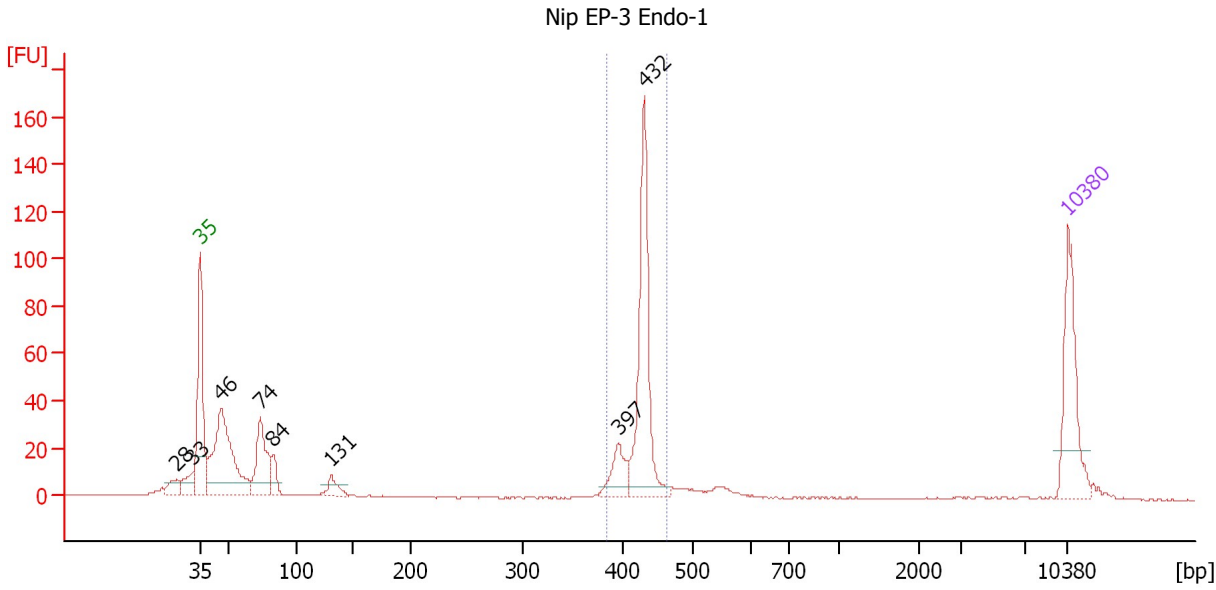
Region table for sample 2 : Nip EP-3 BF-2

From [bp]	To [bp]	Average Size [bp]	Molarity [pmol/l]	Conc. [pg/μl]	Corr. Area	% of Total	Size distribution in CV [%]	Color
405	459	426	307.7	86.51	99.9	6	2.2	

Assay Class: High Sensitivity DNA Assay
 Data Path: C:\...ents and Settings\Bioanalyzer\2012-08-01\2012-08-01_004.xad

Created: 8/1/2012 2:06:01 PM
 Modified: 8/1/2012 2:51:19 PM

Electropherogram Summary Continued ...



Overall Results for sample 3 : Nip EP-3 Endo-1

Number of peaks found: 8 Corr. Area 1: 229.6
 Noise: 0.2

Peak table for sample 3 : Nip EP-3 Endo-1

Peak	Size [bp]	Conc. [pg/μl]	Molarity [pmol/l]	Observations
1	28	0.00	0.0	
2	33	0.00	0.0	
3	35	125.00	5,411.3	Lower Marker
4	46	211.24	6,954.9	
5	74	91.88	1,887.2	
6	84	23.79	431.5	
7	131	20.36	235.8	
8	397	37.63	143.7	
9	432	180.92	634.9	
10	10,380	75.00	10.9	Upper Marker

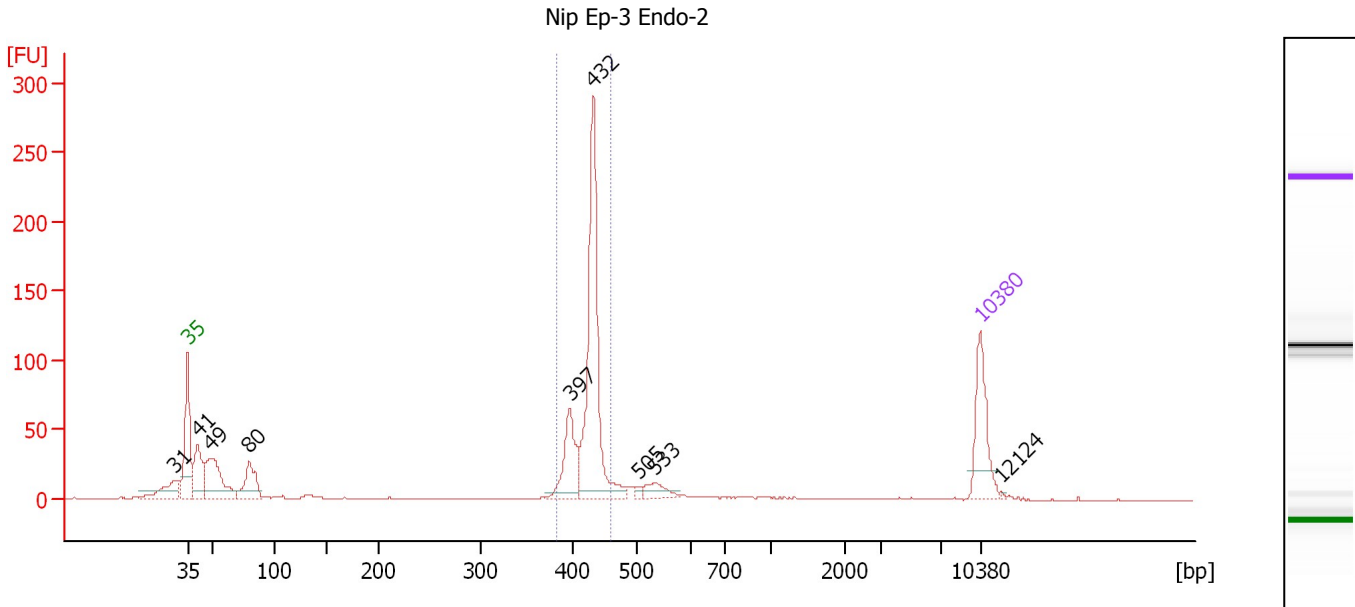
Region table for sample 3 : Nip EP-3 Endo-1

From [bp]	To [bp]	Average Size [bp]	Molarity [pmol/l]	Conc. [pg/μl]	Corr. Area	% of Total	Size distribution in CV [%]	Color
384	464	425	769.8	215.86	229.6	38	3.5	Blue

Assay Class: High Sensitivity DNA Assay
 Data Path: C:\...ents and Settings\Bioanalyzer\2012-08-01\2012-08-01_004.xad

Created: 8/1/2012 2:06:01 PM
 Modified: 8/1/2012 2:51:19 PM

Electropherogram Summary Continued ...



Overall Results for sample 4 : Nip Ep-3 Endo-2

Number of peaks found: 9 Corr. Area 1: 458.7
 Noise: 0.2

Peak table for sample 4 : Nip Ep-3 Endo-2

Peak	Size [bp]	Conc. [pg/μl]	Molarity [pmol/l]	Observations
1	31	0.00	0.0	
2	35	125.00	5,411.3	Lower Marker
3	41	99.60	3,685.0	
4	49	148.80	4,621.4	
5	80	81.96	1,560.1	
6	397	93.05	355.5	
7	432	329.60	1,156.9	
8	505	6.35	19.1	
9	533	23.69	67.4	
10	10,380	75.00	10.9	Upper Marker
11	12,124	0.00	0.0	

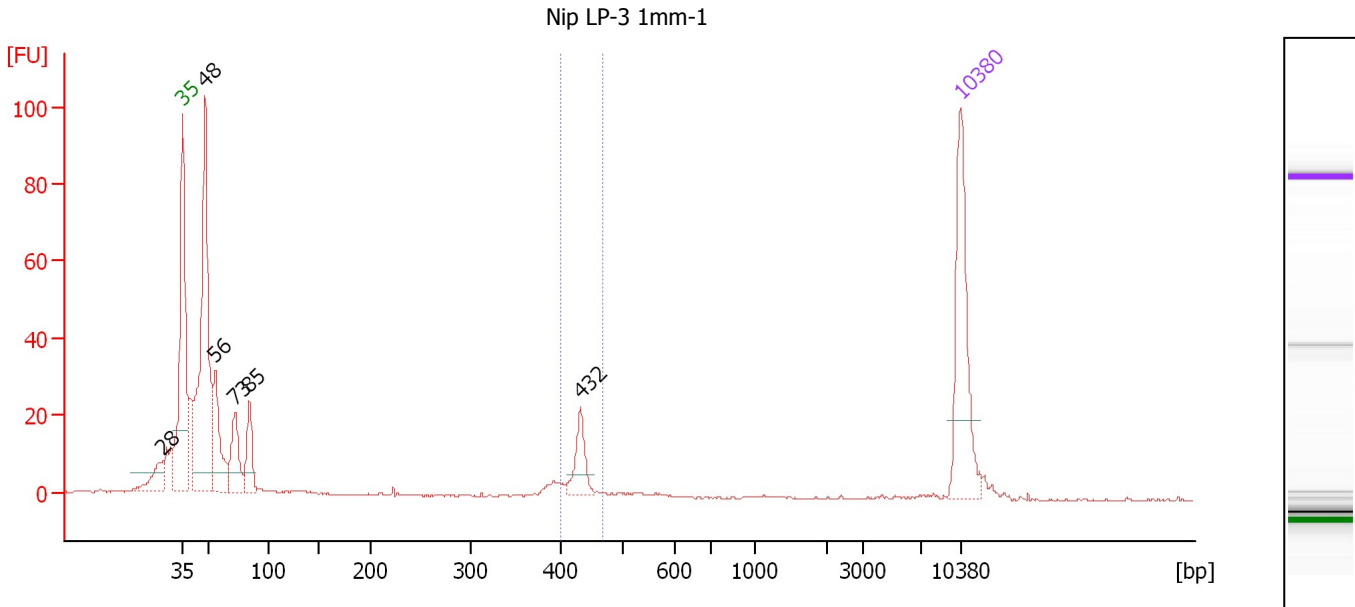
Region table for sample 4 : Nip Ep-3 Endo-2

From [bp]	To [bp]	Average Size [bp]	Molarity [pmol/l]	Conc. [pg/μl]	Corr. Area	% of Total	Size distribution in CV [%]	Color
383	460	424	1,446.9	403.92	458.7	53	3.8	Blue

Assay Class: High Sensitivity DNA Assay
 Data Path: C:\...ents and Settings\Bioanalyzer\2012-08-01\2012-08-01_004.xad

Created: 8/1/2012 2:06:01 PM
 Modified: 8/1/2012 2:51:19 PM

Electropherogram Summary Continued ...



Overall Results for sample 5 : Nip LP-3 1mm-1

Number of peaks found: 6 Corr. Area 1: 32.0
 Noise: 0.2

Peak table for sample 5 : Nip LP-3 1mm-1

Peak	Size [bp]	Conc. [pg/μl]	Molarity [pmol/l]	Observations
1	28	0.00	0.0	
2	35	125.00	5,411.3	Lower Marker
3	48	274.75	8,597.4	
4	56	76.26	2,055.1	
5	73	52.99	1,105.6	
6	85	40.71	729.3	
7	432	28.07	98.5	
8	10,380	75.00	10.9	Upper Marker

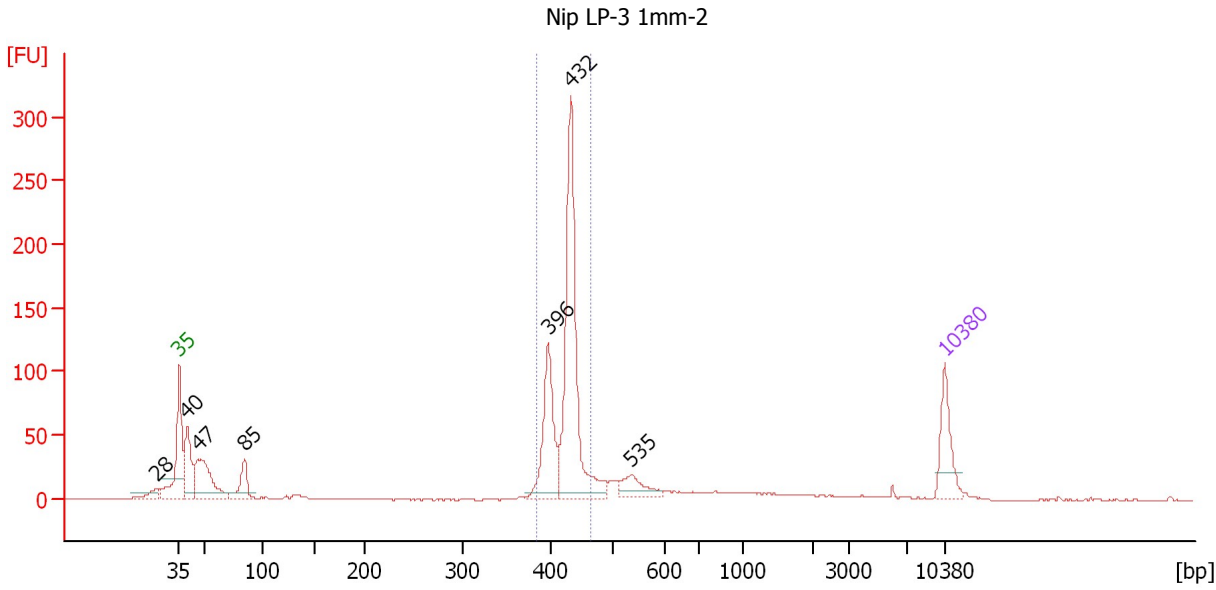
Region table for sample 5 : Nip LP-3 1mm-1

From [bp]	To [bp]	Average Size [bp]	Molarity [pmol/l]	Conc. [pg/μl]	Corr. Area	% of Total	Size distribution in CV [%]	Color
400	468	430	113.3	32.12	32.0	7	2.7	Blue

Assay Class: High Sensitivity DNA Assay
 Data Path: C:\...ents and Settings\Bioanalyzer\2012-08-01\2012-08-01_004.xad

Created: 8/1/2012 2:06:01 PM
 Modified: 8/1/2012 2:51:19 PM

Electropherogram Summary Continued ...



Overall Results for sample 6 : Nip LP-3 1mm-2

Number of peaks found: 7 Corr. Area 1: 590.7
 Noise: 0.3

Peak table for sample 6 : Nip LP-3 1mm-2

Peak	Size [bp]	Conc. [pg/μl]	Molarity [pmol/l]	Observations
1	28	0.00	0.0	
2	35	125.00	5,411.3	Lower Marker
3	40	152.11	5,781.0	
4	47	202.29	6,566.0	
5	85	78.83	1,412.9	
6	396	195.17	746.0	
7	432	483.29	1,695.9	
8	535	53.47	151.5	
9	10,380	75.00	10.9	Upper Marker

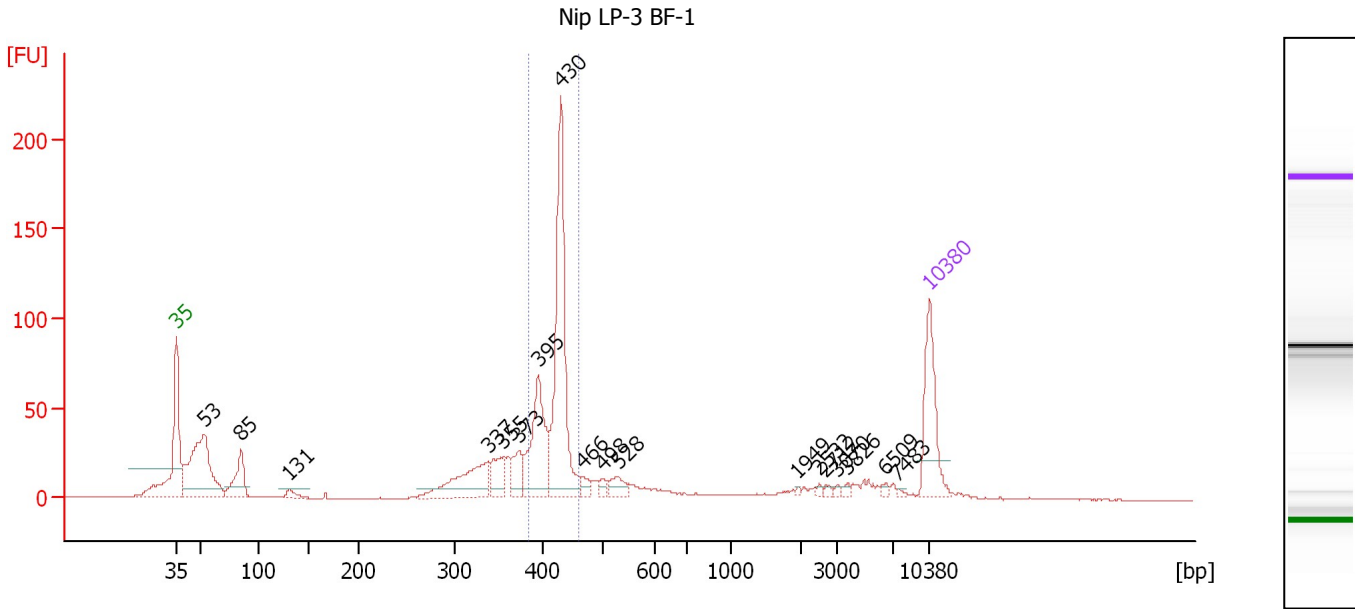
Region table for sample 6 : Nip LP-3 1mm-2

From [bp]	To [bp]	Average Size [bp]	Molarity [pmol/l]	Conc. [pg/μl]	Corr. Area	% of Total	Size distribution in CV [%]	Color
384	462	422	2,312.4	643.25	590.7	51	4.2	■

Assay Class: High Sensitivity DNA Assay
 Data Path: C:\...ents and Settings\Bioanalyzer\2012-08-01\2012-08-01_004.xad

Created: 8/1/2012 2:06:01 PM
 Modified: 8/1/2012 2:51:19 PM

Electropherogram Summary Continued ...



Overall Results for sample 7 : Nip LP-3 BF-1

Number of peaks found: 18 Corr. Area 1: 393.0
 Noise: 0.2

Peak table for sample 7 : Nip LP-3 BF-1

Peak	Size [bp]	Conc. [pg/μl]	Molarity [pmol/l]	Observations
1	35	125.00	5,411.3	Lower Marker
2	53	238.17	6,812.0	
3	85	67.66	1,212.9	
4	131	13.33	154.7	
5	337	98.70	443.6	
6	355	38.08	162.6	
7	373	36.07	146.7	
8	395	125.44	480.9	
9	430	264.61	932.8	
10	466	11.29	36.7	
11	498	8.56	26.0	
12	528	19.72	56.6	
13	1,949	1.86	1.4	
14	2,532	2.56	1.5	
15	2,712	3.15	1.8	
16	3,070	2.92	1.4	
17	3,826	3.23	1.3	
18	6,509	4.01	0.9	
19	7,483	1.87	0.4	
20	10,380	75.00	10.9	Upper Marker

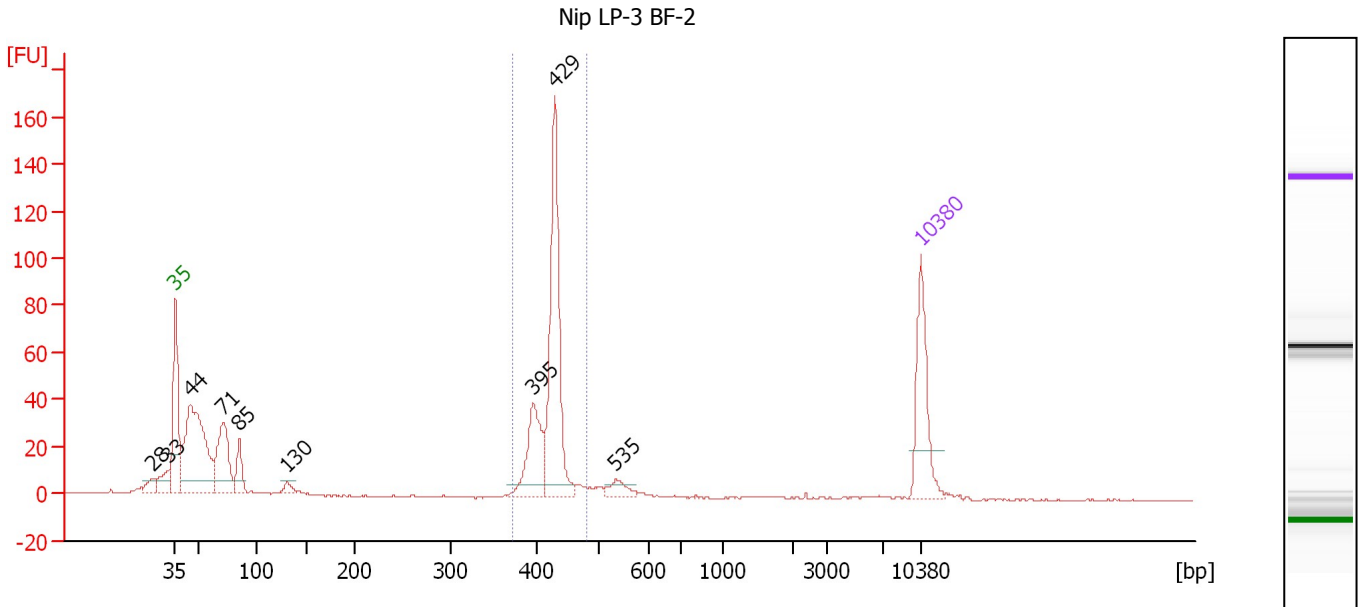
Region table for sample 7 : Nip LP-3 BF-1

From [bp]	To [bp]	Average Size [bp]	Molarity [pmol/l]	Conc. [pg/μl]	Corr. Area	% of Total	Size distribution in CV [%]	Color
385	458	420	1,351.4	374.08	393.0	37	4.0	Blue

Assay Class: High Sensitivity DNA Assay
 Data Path: C:\...ents and Settings\Bioanalyzer\2012-08-01\2012-08-01_004.xad

Created: 8/1/2012 2:06:01 PM
 Modified: 8/1/2012 2:51:19 PM

Electropherogram Summary Continued ...



Overall Results for sample 8 : Nip LP-3 BF-2

Number of peaks found: 9 Corr. Area 1: 297.8
 Noise: 0.3

Peak table for sample 8 : Nip LP-3 BF-2

Peak	Size [bp]	Conc. [pg/μl]	Molarity [pmol/l]	Observations
1	28	0.00	0.0	
2	33	0.00	0.0	
3	35	125.00	5,411.3	Lower Marker
4	44	290.41	9,925.8	
5	71	118.83	2,543.4	
6	85	39.93	714.7	
7	130	11.02	128.3	
8	395	86.69	332.8	
9	429	223.58	790.3	
10	535	17.88	50.6	
11	10,380	75.00	10.9	Upper Marker

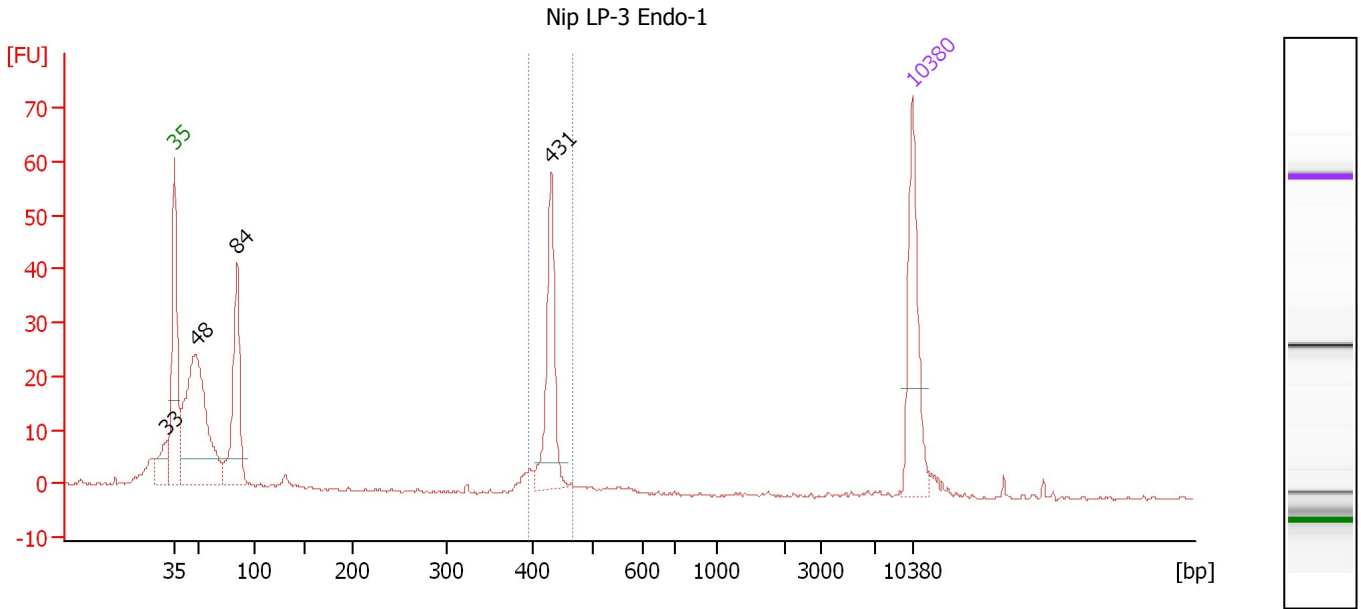
Region table for sample 8 : Nip LP-3 BF-2

From [bp]	To [bp]	Average Size [bp]	Molarity [pmol/l]	Conc. [pg/μl]	Corr. Area	% of Total	Size distribution in CV [%]	Color
371	480	421	1,133.2	314.27	297.8	42	4.4	Blue

Assay Class: High Sensitivity DNA Assay
 Data Path: C:\...ents and Settings\Bioanalyzer\2012-08-01\2012-08-01_004.xad

Created: 8/1/2012 2:06:01 PM
 Modified: 8/1/2012 2:51:19 PM

Electropherogram Summary Continued ...



Overall Results for sample 9 : Nip LP-3 Endo-1

Number of peaks found: 4 Corr. Area 1: 71.8
 Noise: 0.2

Peak table for sample 9 : Nip LP-3 Endo-1

Peak	Size [bp]	Conc. [pg/μl]	Molarity [pmol/l]	Observations
1	33	0.00	0.0	
2	35	125.00	5,411.3	Lower Marker
3	48	285.11	8,913.5	
4	84	145.75	2,620.3	
5	431	101.83	358.3	
6	10,380	75.00	10.9	Upper Marker

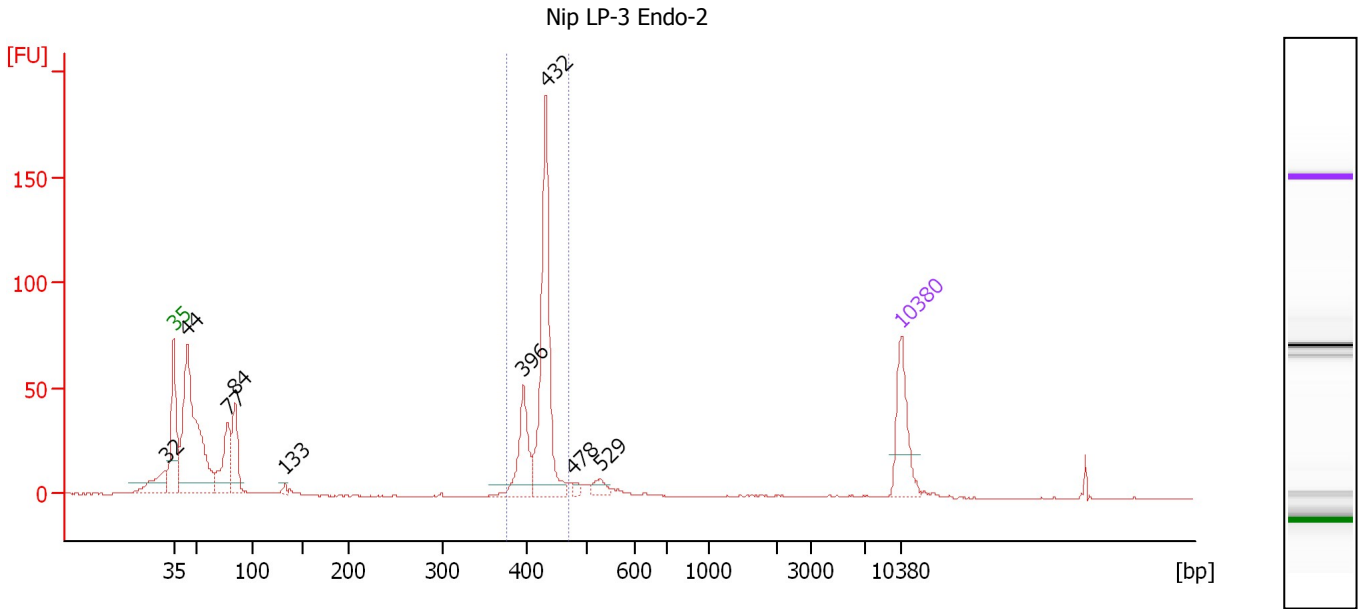
Region table for sample 9 : Nip LP-3 Endo-1

From [bp]	To [bp]	Average Size [bp]	Molarity [pmol/l]	Conc. [pg/μl]	Corr. Area	% of Total	Size distribution in CV [%]	Color
396	466	428	383.3	108.35	71.8	22	2.5	Blue

Assay Class: High Sensitivity DNA Assay
 Data Path: C:\...ents and Settings\Bioanalyzer\2012-08-01\2012-08-01_004.xad

Created: 8/1/2012 2:06:01 PM
 Modified: 8/1/2012 2:51:19 PM

Electropherogram Summary Continued ...



Overall Results for sample 10 : Nip LP-3 Endo-2

Number of peaks found: 9 Corr. Area 1: 294.8
 Noise: 0.2

Peak table for sample 10 : Nip LP-3 Endo-2

Peak	Size [bp]	Conc. [pg/μl]	Molarity [pmol/l]	Observations
1	32	0.00	0.0	
2	35	125.00	5,411.3	Lower Marker
3	44	486.28	16,922.7	
4	77	123.06	2,420.5	
5	84	101.67	1,841.3	
6	133	8.20	93.4	
7	396	99.30	380.3	
8	432	292.73	1,027.6	
9	478	8.63	27.4	
10	529	17.36	49.7	
11	10,380	75.00	10.9	Upper Marker

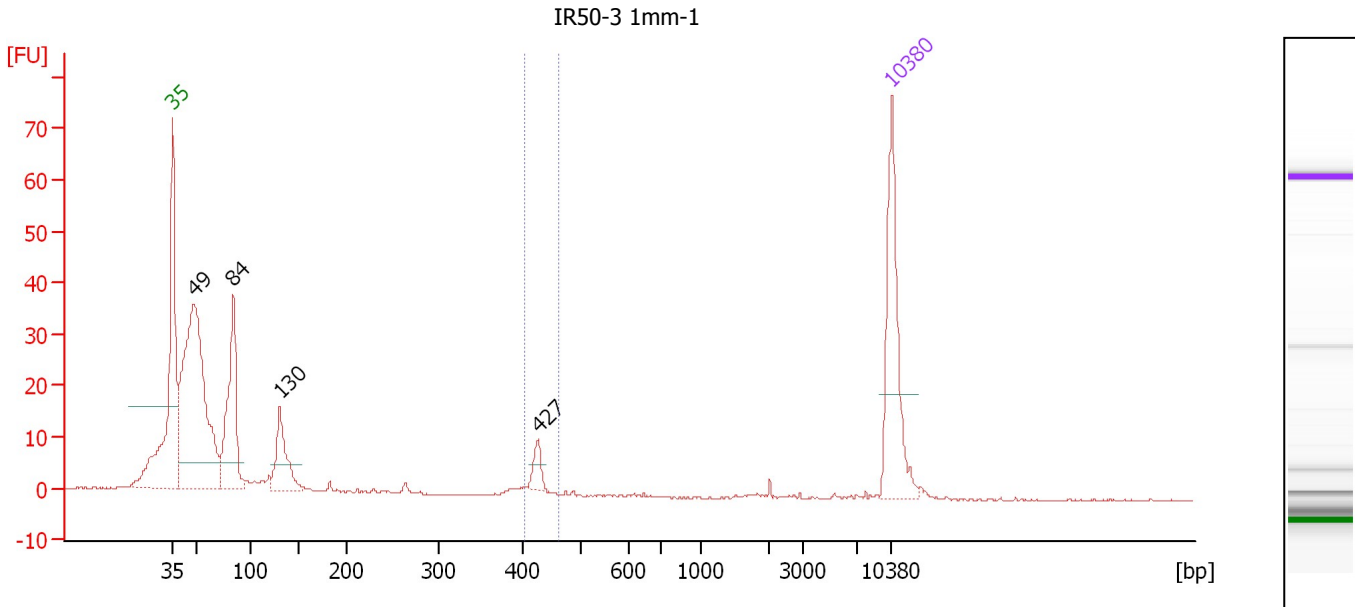
Region table for sample 10 : Nip LP-3 Endo-2

From [bp]	To [bp]	Average Size [bp]	Molarity [pmol/l]	Conc. [pg/μl]	Corr. Area	% of Total	Size distribution in CV [%]	Color
375	471	423	1,402.7	390.61	294.8	38	4.2	Blue

Assay Class: High Sensitivity DNA Assay
 Data Path: C:\...ents and Settings\Bioanalyzer\2012-08-01\2012-08-01_004.xad

Created: 8/1/2012 2:06:01 PM
 Modified: 8/1/2012 2:51:19 PM

Electropherogram Summary Continued ...



Overall Results for sample 11 : IR50-3 1mm-1

Number of peaks found: 4 Corr. Area 1: 13.2
 Noise: 0.2

Peak table for sample 11 : IR50-3 1mm-1

Peak	Size [bp]	Conc. [pg/μl]	Molarity [pmol/l]	Observations
1	35	125.00	5,411.3	Lower Marker
2	49	369.62	11,472.9	
3	84	133.47	2,413.4	
4	130	60.23	703.4	
5	427	13.51	48.0	
6	10,380	75.00	10.9	Upper Marker

Region table for sample 11 : IR50-3 1mm-1

From [bp]	To [bp]	Average Size [bp]	Molarity [pmol/l]	Conc. [pg/μl]	Corr. Area	% of Total	Size distribution in CV [%]	Color
403	463	425	60.8	17.03	13.2	4	2.0	Blue

Assay Class: High Sensitivity DNA Assay
Data Path: C:\...ents and Settings\Bioanalyzer\2012-08-01\2012-08-01_004.xad

Created: 8/1/2012 2:06:01 PM
Modified: 8/1/2012 2:51:19 PM

Gel Image

