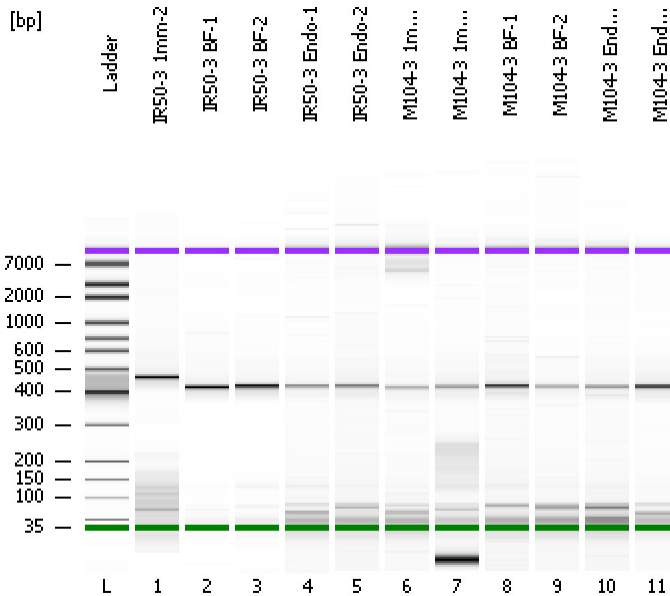


Assay Class: High Sensitivity DNA Assay
Data Path: C:\...ents and Settings\Bioanalyzer\2012-08-01\2012-08-01_005.xad

Created: 8/1/2012 3:04:39 PM
Modified: 8/1/2012 3:46:53 PM

Electrophoresis File Run Summary



Instrument Information:

Instrument Name: DE13701086 Firmware: C.01.069
Serial#: DE13701086 Type: G2938B

Assay Information:

Assay Origin Path: C:\Program Files\Agilent\2100 bioanalyzer\2100 expert\assays\dsDNA\High Sensitivity DNA.xsy
Assay Class: High Sensitivity DNA Assay
Version: 1.03
Assay Comments: Copyright © 2003-2010 Agilent Technologies

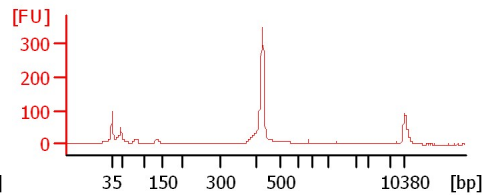
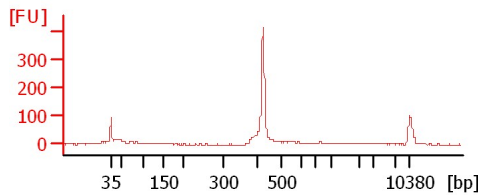
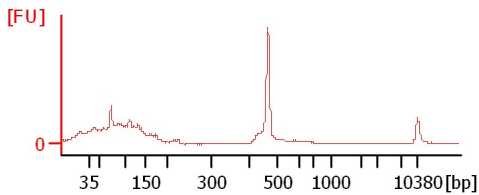
Chip Information:

Chip Lot #:
Reagent Kit Lot #:
Chip Comments:

IR50-3 1mm-2

IR50-3 BF-1

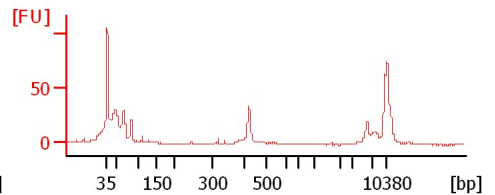
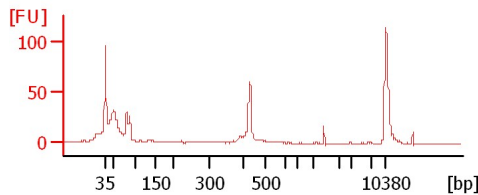
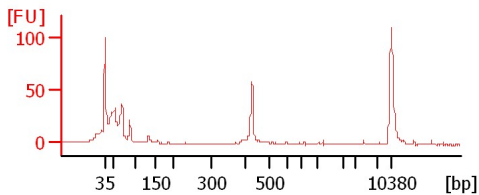
IR50-3 BF-2



IR50-3 Endo-1

IR50-3 Endo-2

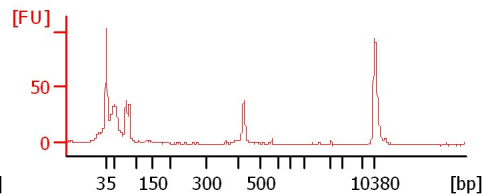
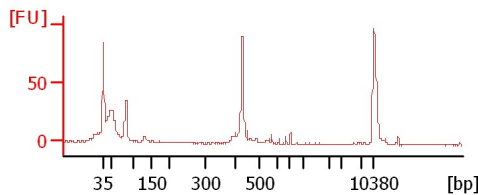
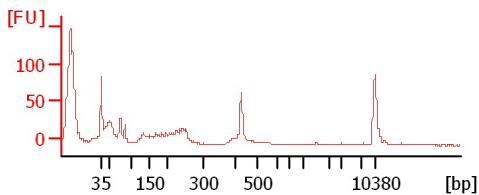
M104-3 1mm-1



M104-3 1mm-2

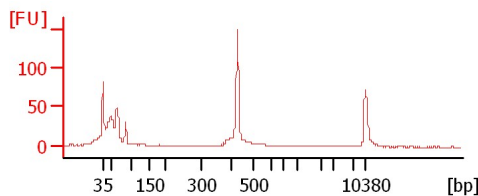
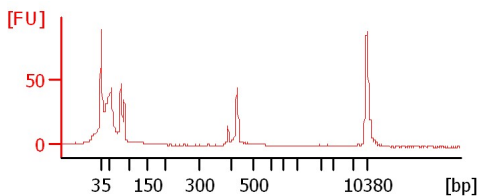
M104-3 BF-1

M104-3 BF-2



M104-3 Endo-1

M104-3 Endo-2



Assay Class: High Sensitivity DNA Assay
 Data Path: C:\...ents and Settings\Bioanalyzer\2012-08-01\2012-08-01_005.xad

Created: 8/1/2012 3:04:39 PM
 Modified: 8/1/2012 3:46:53 PM

Electrophoresis File Run Summary (Chip Summary)

Sample Name	Sample Comment	Rest. Digest	Status	Observation	Result Label	Result Color
IR50-3 1mm-2		<input type="checkbox"/>	✓			
IR50-3 BF-1		<input type="checkbox"/>	✓			
IR50-3 BF-2		<input type="checkbox"/>	✓			
IR50-3 Endo-1		<input type="checkbox"/>	✓			
IR50-3 Endo-2		<input type="checkbox"/>	✓			
M104-3 1mm-1		<input type="checkbox"/>	✓			
M104-3 1mm-2		<input type="checkbox"/>	✓			
M104-3 BF-1		<input type="checkbox"/>	✓			
M104-3 BF-2		<input type="checkbox"/>	✓			
M104-3 Endo-1		<input type="checkbox"/>	✓			
M104-3 Endo-2		<input type="checkbox"/>	✓			
Ladder		<input type="checkbox"/>	✓			

Chip Lot #

Reagent Kit Lot #

Chip Comments :

Assay Class: High Sensitivity DNA Assay
 Data Path: C:\...ents and Settings\Bioanalyzer\2012-08-01\2012-08-01_005.xad

Created: 8/1/2012 3:04:39 PM
 Modified: 8/1/2012 3:46:53 PM

Electrophoresis Assay Details

General Analysis Settings

Number of Available Sample and Ladder Wells (Max.) : 12
 Minimum Visible Range [s] : 32
 Maximum Visible Range [s] : 138
 Start Analysis Time Range [s] : 33
 End Analysis Time Range [s] : 137.5
 Ladder Concentration [pg/μl] : 1950
 Uses Standard Area for Ladder Fragments
 Lower Marker Concentration [pg/μl] : 125
 Upper Marker Concentration [pg/μl] : 75
 Used Upper Marker for Quantitation
 Standard Curve Fit is Point to Point
 Show Data Aligned to Lower and Upper Marker

Integrator Settings

Integration Start Time [s] : 33.05
 Integration End Time [s] : 137
 Slope Threshold : 0.8
 Height Threshold [FU] : 5
 Area Threshold : 0.1
 Width Threshold [s] : 0.6
 Baseline Plateau [s] : 0.5

Filter Settings

Filter Width [s] : 0.5
 Polynomial Order : 4

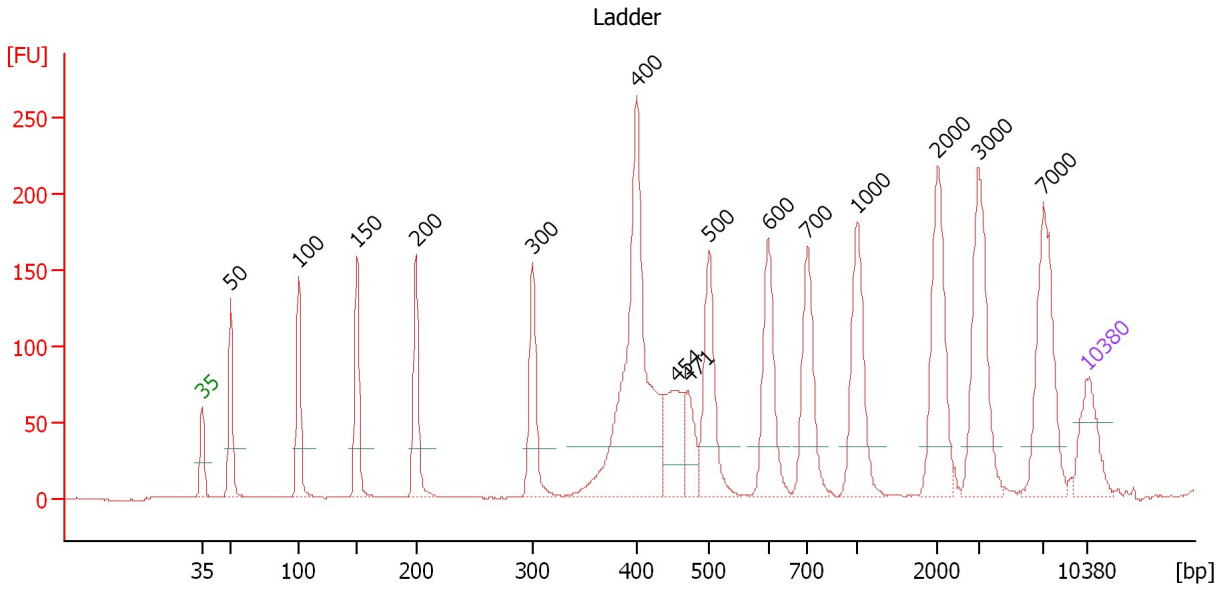
Ladder

Ladder Peak	Size	Area
1	35	160
2	50	210
3	100	208
4	150	221
5	200	242
6	300	270
7	400	305
8	500	306
9	600	336
10	700	321
11	1000	366
12	2000	413
13	3000	411
14	7000	400
15	10380	214

Assay Class: High Sensitivity DNA Assay
 Data Path: C:\...ents and Settings\Bioanalyzer\2012-08-01\2012-08-01_005.xad

Created: 8/1/2012 3:04:39 PM
 Modified: 8/1/2012 3:46:53 PM

Electropherogram Summary



Overall Results for Ladder

Noise: 0.2

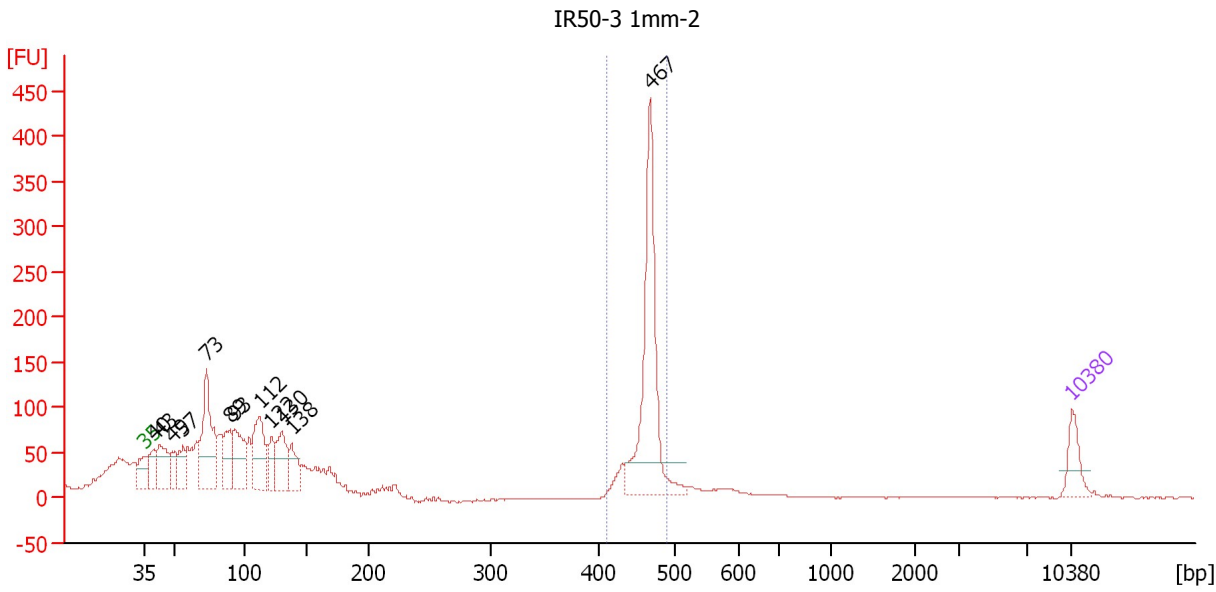
Peak table for Ladder

Peak	Size [bp]	Conc. [pg/μl]	Molarity [pmol/l]	Observations
1	35	125.00	5,411.3	Lower Marker
2	50	150.00	4,545.5	Ladder Peak
3	100	150.00	2,272.7	Ladder Peak
4	150	150.00	1,515.2	Ladder Peak
5	200	150.00	1,136.4	Ladder Peak
6	300	150.00	757.6	Ladder Peak
7	400	150.00	568.2	Ladder Peak
8	454	0.00	0.0	
9	471	0.00	0.0	
10	500	150.00	454.5	Ladder Peak
11	600	150.00	378.8	Ladder Peak
12	700	150.00	324.7	Ladder Peak
13	1,000	150.00	227.3	Ladder Peak
14	2,000	150.00	113.6	Ladder Peak
15	3,000	150.00	75.8	Ladder Peak
16	7,000	150.00	32.5	Ladder Peak
17	10,380	75.00	10.9	Upper Marker

Assay Class: High Sensitivity DNA Assay
 Data Path: C:\...ents and Settings\Bioanalyzer\2012-08-01\2012-08-01_005.xad

Created: 8/1/2012 3:04:39 PM
 Modified: 8/1/2012 3:46:53 PM

Electropherogram Summary Continued ...



Setpoint Deviations for sample 1 : IR50-3 1mm-2

Height Threshold [FU] : 35

Overall Results for sample 1 : IR50-3 1mm-2

Number of peaks found: 12 Corr. Area 1: 626.9
 Noise: 0.6

Peak table for sample 1 : IR50-3 1mm-2

Peak	Size [bp]	Conc. [pg/μl]	Molarity [pmol/l]	Observations
1	35	125.00	5,411.3	Lower Marker
2	40	141.04	5,362.2	
3	43	232.46	8,174.6	
4	49	110.73	3,404.0	
5	57	131.09	3,515.3	
6	73	516.49	10,719.9	
7	89	188.36	3,188.9	
8	93	280.35	4,573.7	
9	112	315.35	4,261.7	
10	122	119.66	1,490.5	
11	130	221.60	2,576.9	
12	138	135.68	1,488.7	
13	467	714.29	2,319.0	
14	10,380	75.00	10.9	Upper Marker

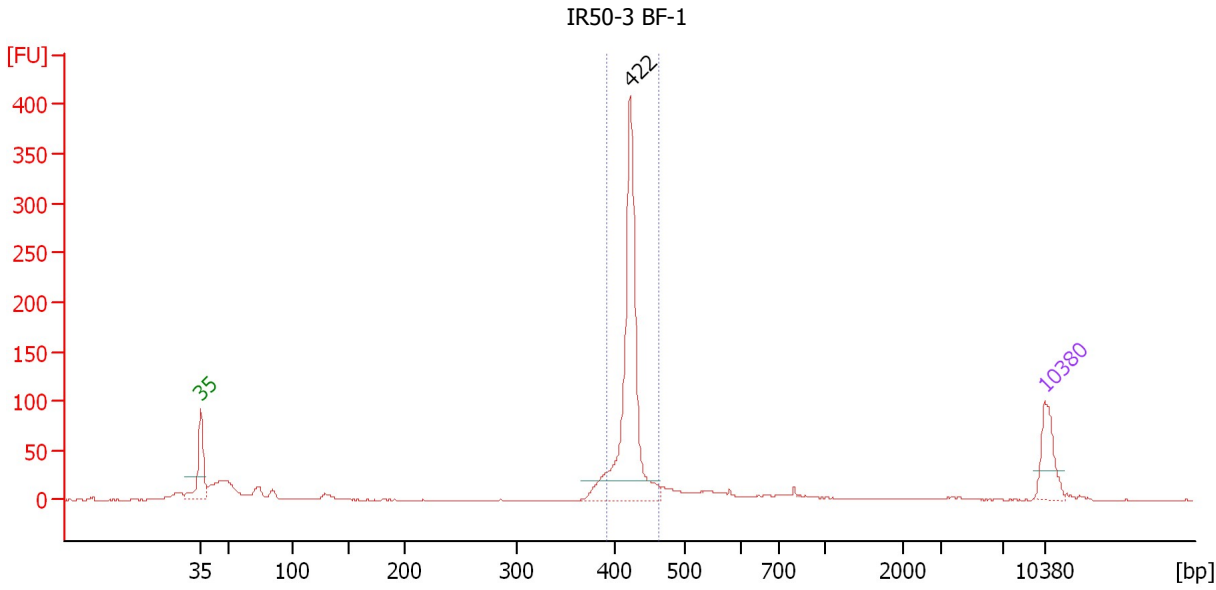
Region table for sample 1 : IR50-3 1mm-2

From [bp]	To [bp]	Average Size [bp]	Molarity [pmol/l]	Conc. [pg/μl]	Corr. Area	% of Total	Size distribution in CV [%]	Color
409	488	462	2,346.1	715.25	626.9	22	2.8	Blue

Assay Class: High Sensitivity DNA Assay
 Data Path: C:\...ents and Settings\Bioanalyzer\2012-08-01\2012-08-01_005.xad

Created: 8/1/2012 3:04:39 PM
 Modified: 8/1/2012 3:46:53 PM

Electropherogram Summary Continued ...



Setpoint Deviations for sample 2 : IR50-3 BF-1

Height Threshold [FU] : 20

Overall Results for sample 2 : IR50-3 BF-1

Number of peaks found: 1 Corr. Area 1: 573.4
 Noise: 0.3

Peak table for sample 2 : IR50-3 BF-1

Peak	Size [bp]	Conc. [pg/μl]	Molarity [pmol/l]	Observations
1	35	125.00	5,411.3	Lower Marker
2	422	592.58	2,128.5	
3	10,380	75.00	10.9	Upper Marker

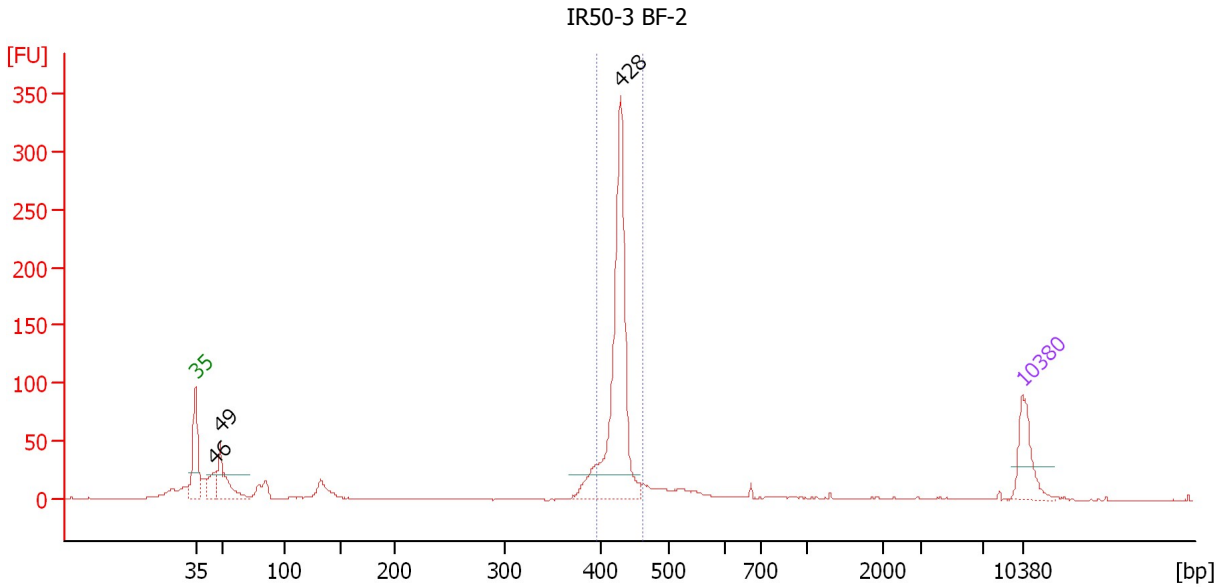
Region table for sample 2 : IR50-3 BF-1

From [bp]	To [bp]	Average Size [bp]	Molarity [pmol/l]	Conc. [pg/μl]	Corr. Area	% of Total	Size distribution in CV [%]	Color
391	464	422	2,001.0	556.90	573.4	58	2.9	Blue

Assay Class: High Sensitivity DNA Assay
 Data Path: C:\...ents and Settings\Bioanalyzer\2012-08-01\2012-08-01_005.xad

Created: 8/1/2012 3:04:39 PM
 Modified: 8/1/2012 3:46:53 PM

Electropherogram Summary Continued ...



Setpoint Deviations for sample 3 : IR50-3 BF-2

Height Threshold [FU] : 20

Overall Results for sample 3 : IR50-3 BF-2

Number of peaks found: 3 Corr. Area 1: 505.6
 Noise: 0.2

Peak table for sample 3 : IR50-3 BF-2

Peak	Size [bp]	Conc. [pg/μl]	Molarity [pmol/l]	Observations
1	35	125.00	5,411.3	Lower Marker
2	46	70.43	2,310.0	
3	49	127.21	3,940.1	
4	428	564.89	2,000.1	
5	10,380	75.00	10.9	Upper Marker

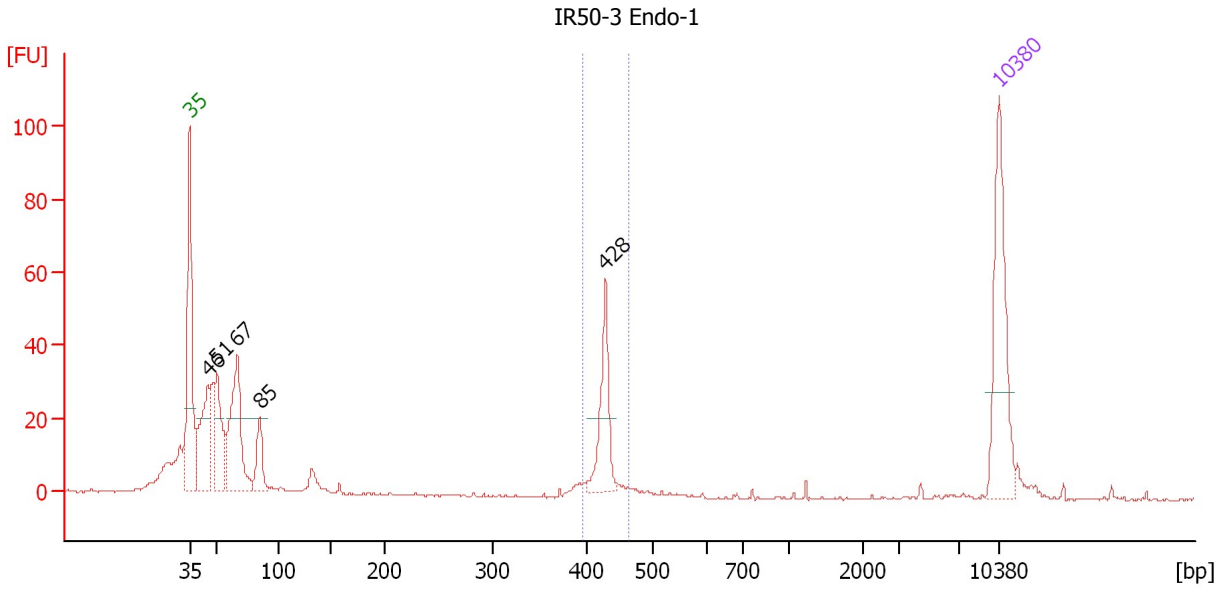
Region table for sample 3 : IR50-3 BF-2

From [bp]	To [bp]	Average Size [bp]	Molarity [pmol/l]	Conc. [pg/μl]	Corr. Area	% of Total	Size distribution in CV [%]	Color
395	462	425	1,869.1	524.42	505.6	58	2.6	Blue

Assay Class: High Sensitivity DNA Assay
 Data Path: C:\...ents and Settings\Bioanalyzer\2012-08-01\2012-08-01_005.xad

Created: 8/1/2012 3:04:39 PM
 Modified: 8/1/2012 3:46:53 PM

Electropherogram Summary Continued ...



Setpoint Deviations for sample 4 : IR50-3 Endo-1

Height Threshold [FU] : 20

Overall Results for sample 4 : IR50-3 Endo-1

Number of peaks found: 5 Corr. Area 1: 68.7
 Noise: 0.2

Peak table for sample 4 : IR50-3 Endo-1

Peak	Size [bp]	Conc. [pg/μl]	Molarity [pmol/l]	Observations
1	35	125.00	5,411.3	Lower Marker
2	46	97.59	3,227.0	
3	51	73.81	2,190.0	
4	67	121.92	2,740.6	
5	85	33.85	600.0	
6	428	57.67	204.2	
7	10,380	75.00	10.9	Upper Marker

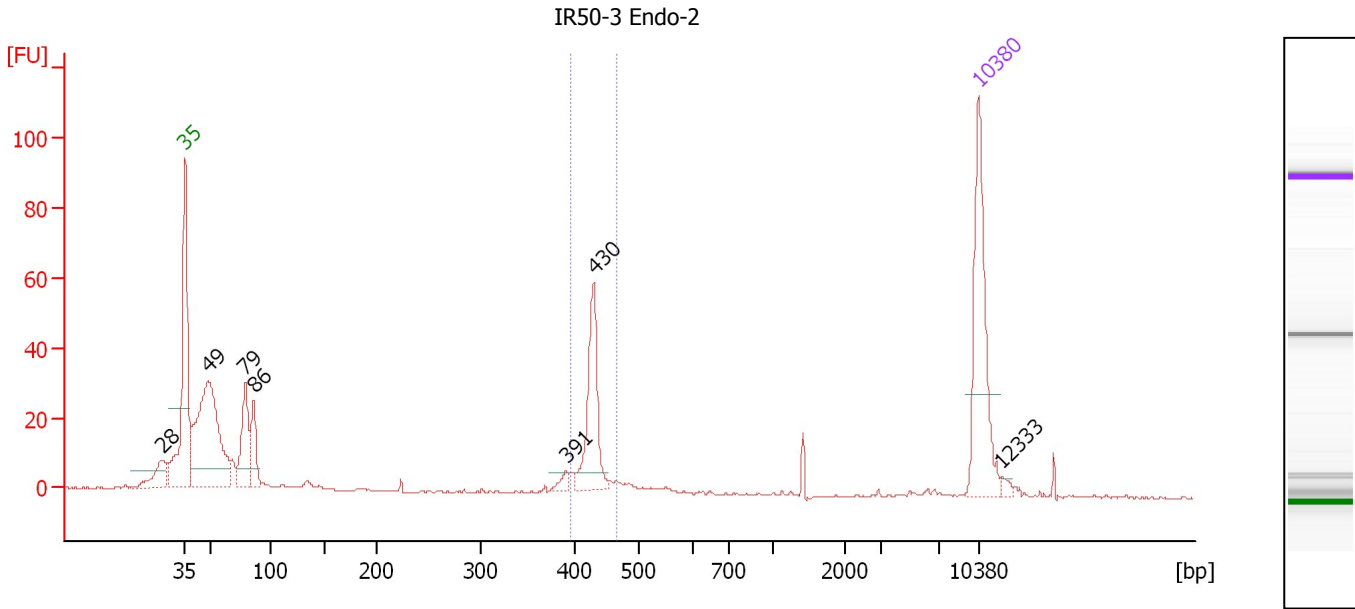
Region table for sample 4 : IR50-3 Endo-1

From [bp]	To [bp]	Average Size [bp]	Molarity [pmol/l]	Conc. [pg/μl]	Corr. Area	% of Total	Size distribution in CV [%]	Color
396	464	426	233.9	65.75	68.7	16	2.6	Blue

Assay Class: High Sensitivity DNA Assay
 Data Path: C:\...ents and Settings\Bioanalyzer\2012-08-01\2012-08-01_005.xad

Created: 8/1/2012 3:04:39 PM
 Modified: 8/1/2012 3:46:53 PM

Electropherogram Summary Continued ...



Overall Results for sample 5 : IR50-3 Endo-2

Number of peaks found: 7 Corr. Area 1: 86.1
 Noise: 0.2

Peak table for sample 5 : IR50-3 Endo-2

Peak	Size [bp]	Conc. [pg/μl]	Molarity [pmol/l]	Observations
1	28	0.00	0.0	
2	35	125.00	5,411.3	Lower Marker
3	49	215.82	6,690.4	
4	79	60.74	1,169.3	
5	86	37.80	668.1	
6	391	5.89	22.8	
7	430	70.22	247.5	
8	10,380	75.00	10.9	Upper Marker
9	12,333	0.00	0.0	

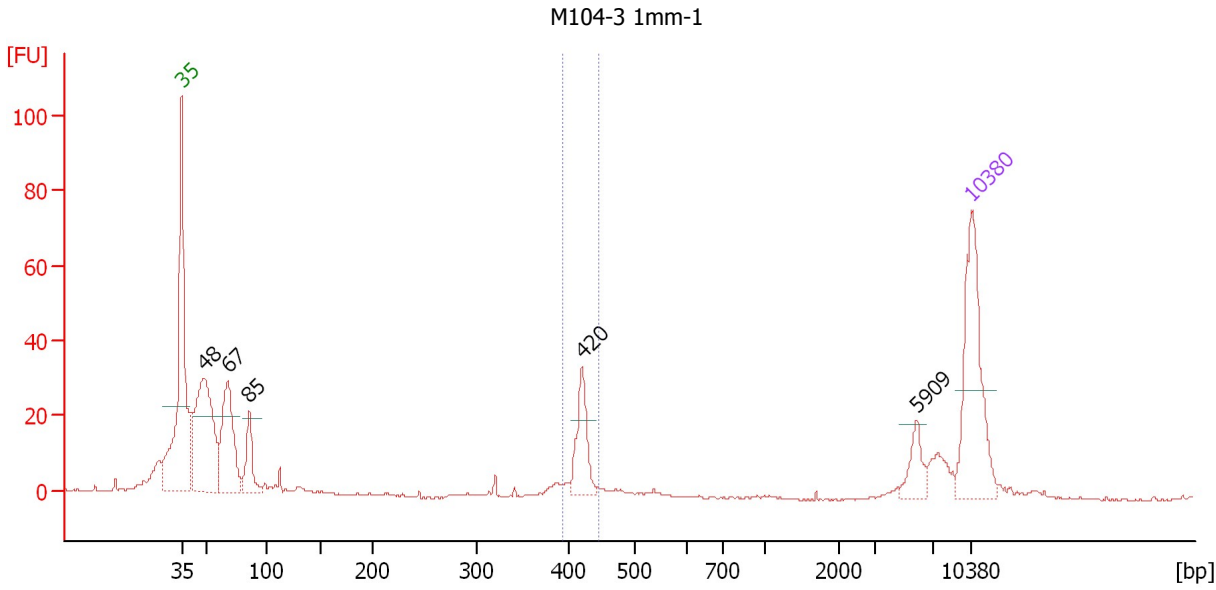
Region table for sample 5 : IR50-3 Endo-2

From [bp]	To [bp]	Average Size [bp]	Molarity [pmol/l]	Conc. [pg/μl]	Corr. Area	% of Total	Size distribution in CV [%]	Color
397	464	427	280.5	79.07	86.1	20	2.8	Blue

Assay Class: High Sensitivity DNA Assay
 Data Path: C:\...ents and Settings\Bioanalyzer\2012-08-01\2012-08-01_005.xad

Created: 8/1/2012 3:04:39 PM
 Modified: 8/1/2012 3:46:53 PM

Electropherogram Summary Continued ...



Setpoint Deviations for sample 6 : M104-3 1mm-1

Height Threshold [FU] : 20

Overall Results for sample 6 : M104-3 1mm-1

Number of peaks found: 5 Corr. Area 1: 47.3
 Noise: 0.2

Peak table for sample 6 : M104-3 1mm-1

Peak	Size [bp]	Conc. [pg/μl]	Molarity [pmol/l]	Observations
1	35	125.00	5,411.3	Lower Marker
2	48	168.48	5,283.3	
3	67	103.33	2,334.4	
4	85	38.63	687.4	
5	420	41.35	149.1	
6	5,909	16.71	4.3	
7	10,380	75.00	10.9	Upper Marker

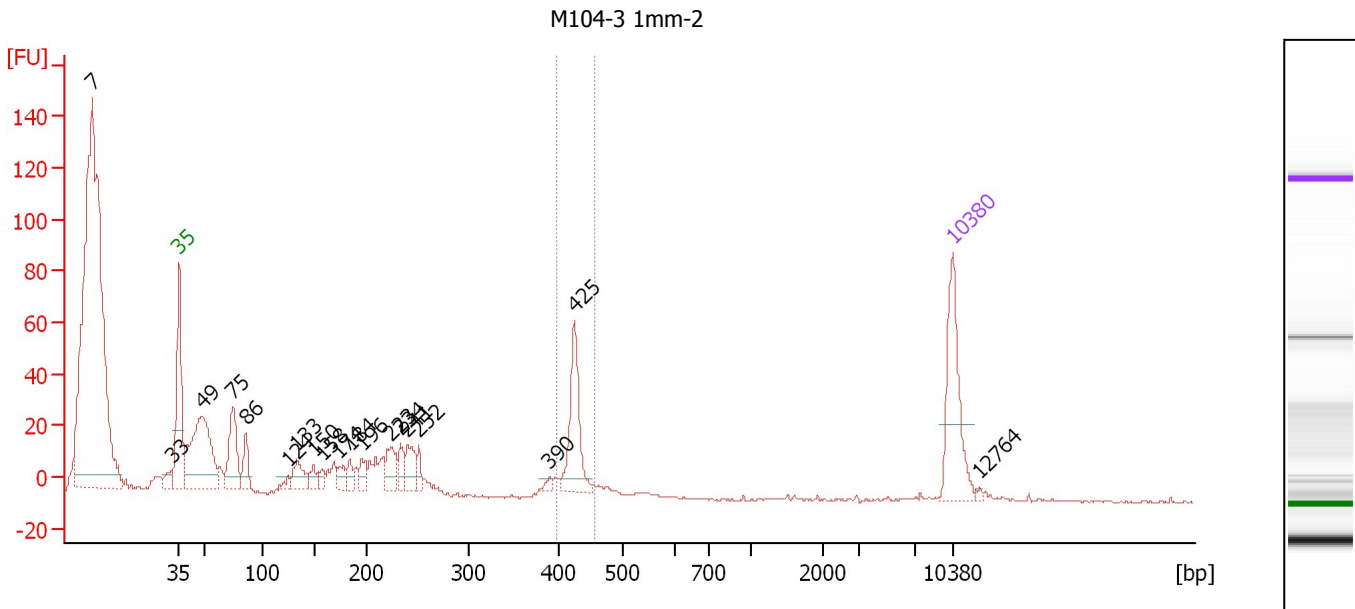
Region table for sample 6 : M104-3 1mm-1

From [bp]	To [bp]	Average Size [bp]	Molarity [pmol/l]	Conc. [pg/μl]	Corr. Area	% of Total	Size distribution in CV [%]	Color
394	445	419	155.5	43.00	47.3	12	2.2	Blue

Assay Class: High Sensitivity DNA Assay
 Data Path: C:\...ents and Settings\Bioanalyzer\2012-08-01\2012-08-01_005.xad

Created: 8/1/2012 3:04:39 PM
 Modified: 8/1/2012 3:46:53 PM

Electropherogram Summary Continued ...



Overall Results for sample 7 : M104-3 1mm-2

Number of peaks found: 19 Corr. Area 1: 59.0
 Noise: 0.2

Peak table for sample 7 : M104-3 1mm-2

Peak	Size [bp]	Conc. [pg/μl]	Molarity [pmol/l]	Observations
1	7	0.00	0.0	
2	33	0.00	0.0	
3	35	125.00	5,411.3	Lower Marker
4	49	198.07	6,136.5	
5	75	82.25	1,671.1	
6	86	33.97	599.7	
7	124	8.47	103.4	
8	133	33.07	376.8	
9	150	17.10	173.2	
10	158	11.95	114.7	
11	174	15.51	135.0	
12	184	14.55	119.6	
13	196	18.47	142.5	
14	223	33.03	224.0	
15	234	18.94	122.7	
16	241	32.53	204.8	
17	252	12.85	77.2	
18	390	5.69	22.1	
19	425	82.64	294.7	
20	10,380	75.00	10.9	Upper Marker
21	12,764	0.00	0.0	

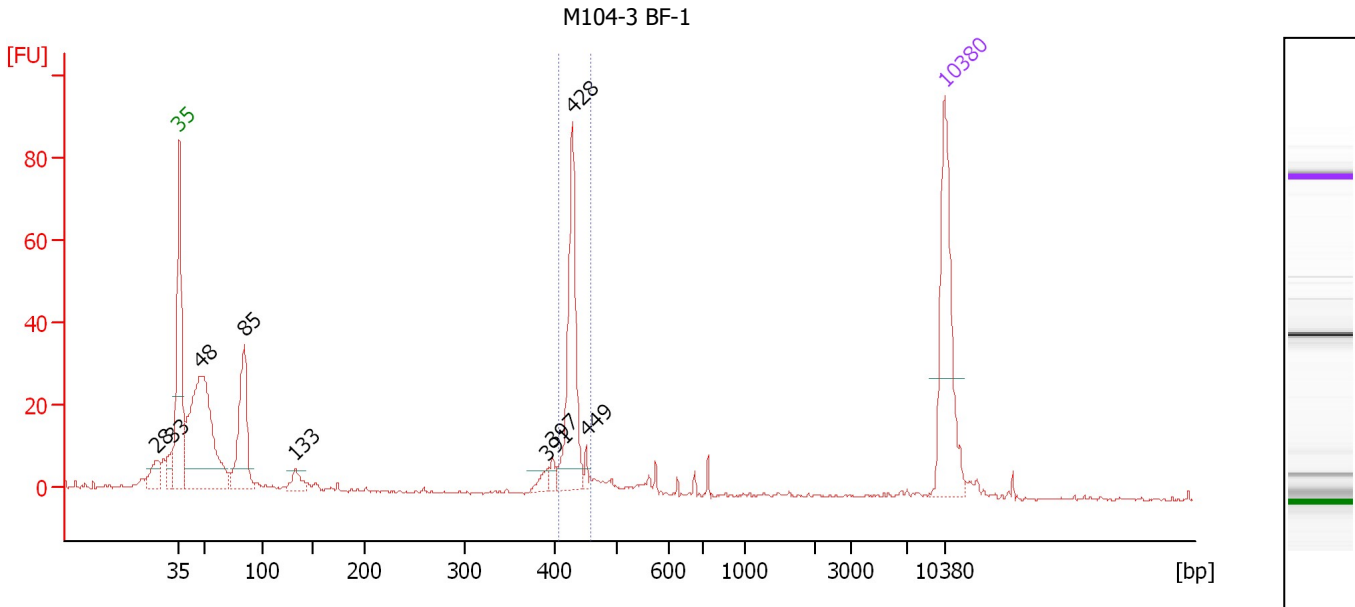
Region table for sample 7 : M104-3 1mm-2

From [bp]	To [bp]	Average Size [bp]	Molarity [pmol/l]	Conc. [pg/μl]	Corr. Area	% of Total	Size distribution in CV [%]	Color
398	456	425	207.6	58.20	59.0	7	1.3	Blue

Assay Class: High Sensitivity DNA Assay
 Data Path: C:\...ents and Settings\Bioanalyzer\2012-08-01\2012-08-01_005.xad

Created: 8/1/2012 3:04:39 PM
 Modified: 8/1/2012 3:46:53 PM

Electropherogram Summary Continued ...



Overall Results for sample 8 : M104-3 BF-1

Number of peaks found: 9 Corr. Area 1: 100.3
 Noise: 0.3

Peak table for sample 8 : M104-3 BF-1

Peak	Size [bp]	Conc. [pg/μl]	Molarity [pmol/l]	Observations
1	28	0.00	0.0	
2	33	0.00	0.0	
3	35	125.00	5,411.3	Lower Marker
4	48	232.97	7,293.3	
5	85	97.29	1,742.6	
6	133	14.13	161.5	
7	391	7.60	29.5	
8	397	5.90	22.5	
9	428	98.96	350.3	
10	449	4.51	15.2	
11	10,380	75.00	10.9	Upper Marker

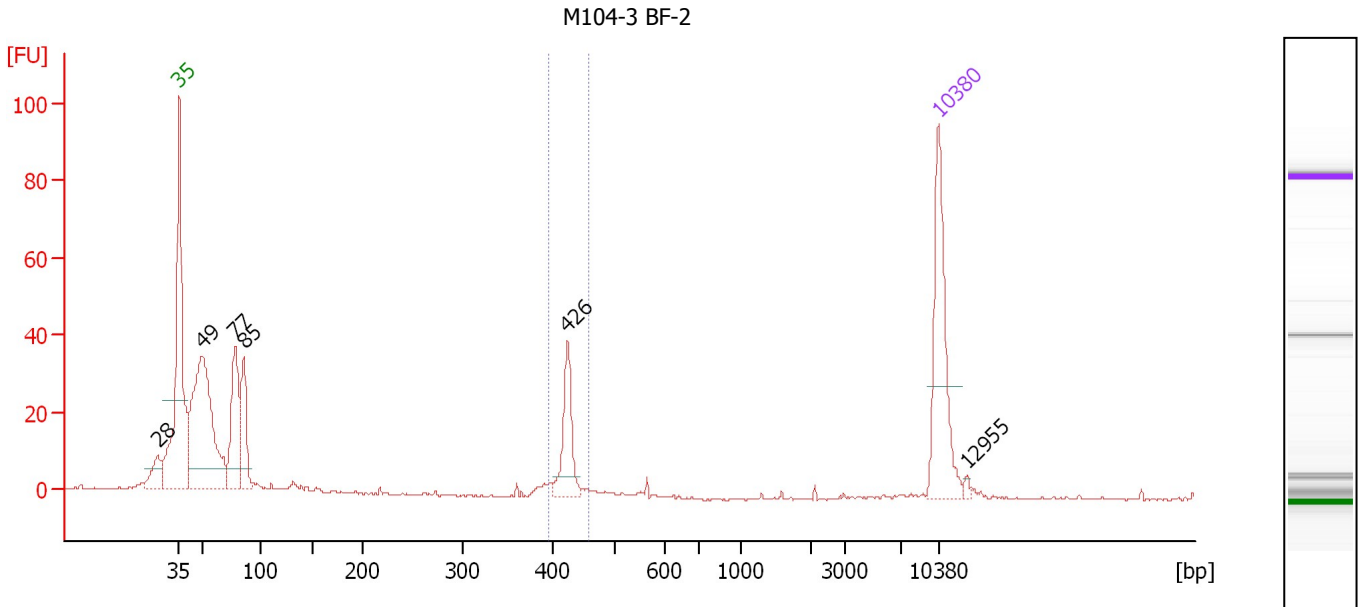
Region table for sample 8 : M104-3 BF-1

From [bp]	To [bp]	Average Size [bp]	Molarity [pmol/l]	Conc. [pg/μl]	Corr. Area	% of Total	Size distribution in CV [%]	Color
405	458	428	364.8	102.95	100.3	25	2.0	Blue

Assay Class: High Sensitivity DNA Assay
 Data Path: C:\...ents and Settings\Bioanalyzer\2012-08-01\2012-08-01_005.xad

Created: 8/1/2012 3:04:39 PM
 Modified: 8/1/2012 3:46:53 PM

Electropherogram Summary Continued ...



Overall Results for sample 9 : M104-3 BF-2

Number of peaks found: 6 Corr. Area 1: 47.0
 Noise: 0.2

Peak table for sample 9 : M104-3 BF-2

Peak	Size [bp]	Conc. [pg/μl]	Molarity [pmol/l]	Observations
1	28	0.00	0.0	
2	35	125.00	5,411.3	Lower Marker
3	49	247.56	7,577.8	
4	77	90.96	1,783.7	
5	85	64.37	1,146.6	
6	426	48.85	173.9	
7	10,380	75.00	10.9	Upper Marker
8	12,955	0.00	0.0	

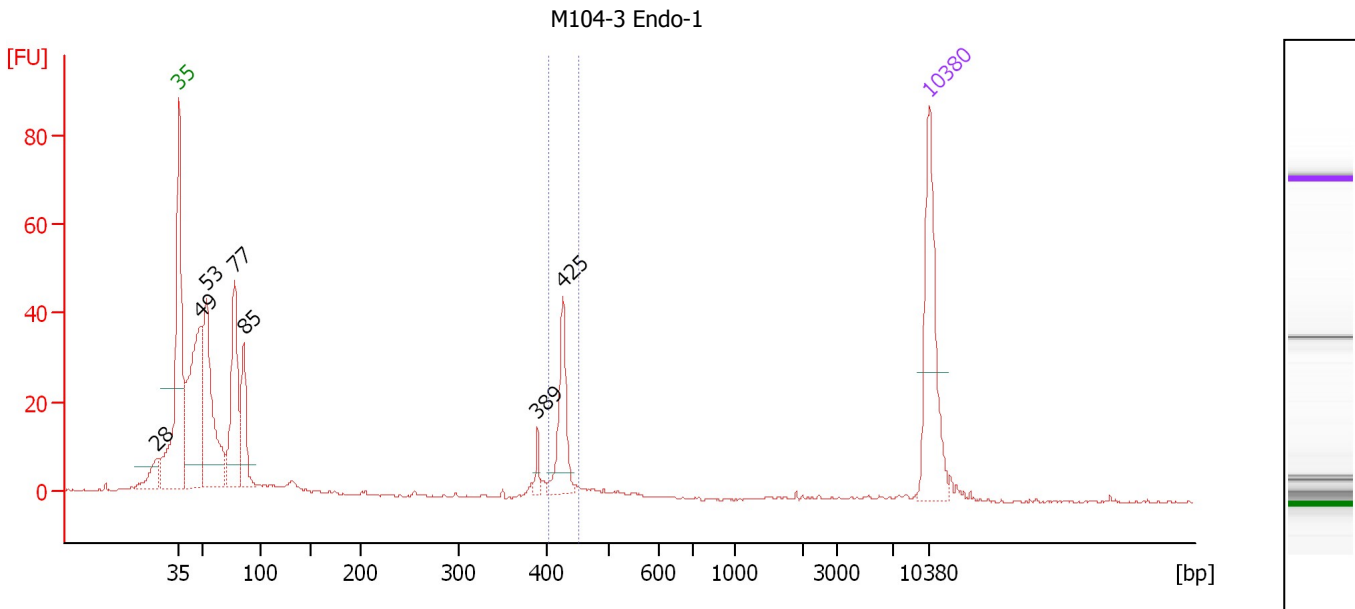
Region table for sample 9 : M104-3 BF-2

From [bp]	To [bp]	Average Size [bp]	Molarity [pmol/l]	Conc. [pg/μl]	Corr. Area	% of Total	Size distribution in CV [%]	Color
395	459	424	171.5	48.02	47.0	13	2.3	Blue

Assay Class: High Sensitivity DNA Assay
 Data Path: C:\...ents and Settings\Bioanalyzer\2012-08-01\2012-08-01_005.xad

Created: 8/1/2012 3:04:39 PM
 Modified: 8/1/2012 3:46:53 PM

Electropherogram Summary Continued ...



Overall Results for sample 10 : M104-3 Endo-1

Number of peaks found: 7 Corr. Area 1: 49.7
 Noise: 0.2

Peak table for sample 10 : M104-3 Endo-1

Peak	Size [bp]	Conc. [pg/μl]	Molarity [pmol/l]	Observations
1	28	0.00	0.0	
2	35	125.00	5,411.3	Lower Marker
3	49	182.79	5,690.0	
4	53	165.44	4,706.6	
5	77	116.59	2,282.8	
6	85	63.40	1,126.6	
7	389	7.86	30.7	
8	425	54.86	195.4	
9	10,380	75.00	10.9	Upper Marker

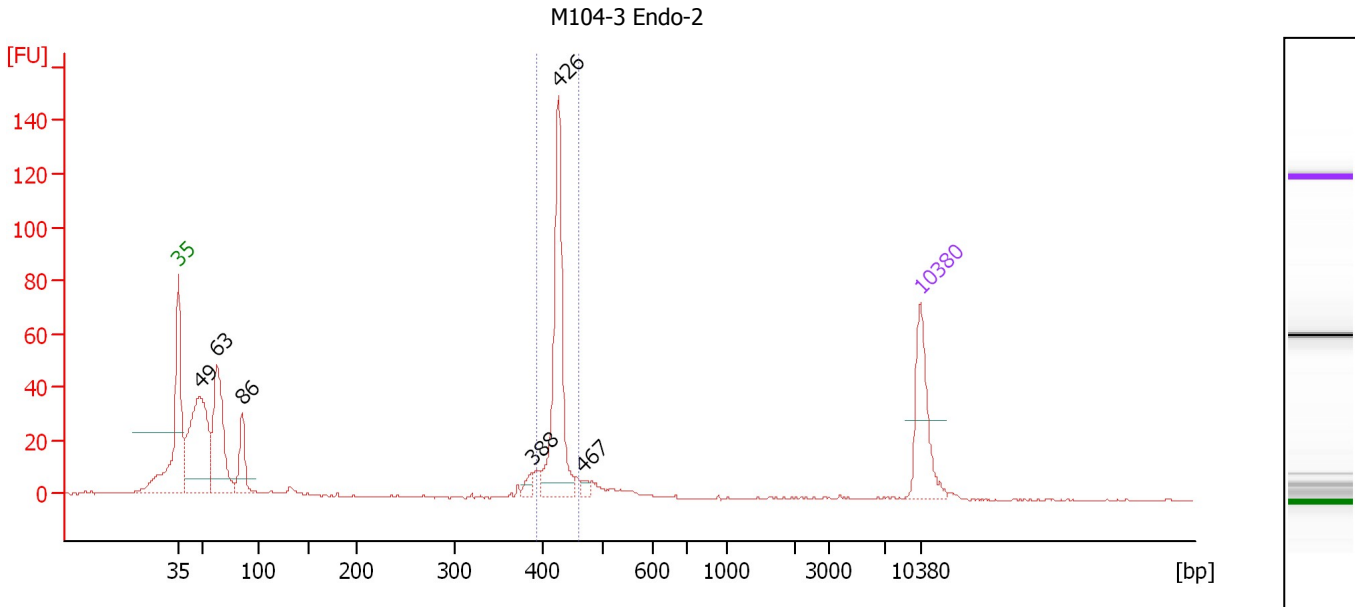
Region table for sample 10 : M104-3 Endo-1

From [bp]	To [bp]	Average Size [bp]	Molarity [pmol/l]	Conc. [pg/μl]	Corr. Area	% of Total	Size distribution in CV [%]	Color
401	451	424	204.9	57.41	49.7	11	2.0	Blue

Assay Class: High Sensitivity DNA Assay
 Data Path: C:\...ents and Settings\Bioanalyzer\2012-08-01\2012-08-01_005.xad

Created: 8/1/2012 3:04:39 PM
 Modified: 8/1/2012 3:46:53 PM

Electropherogram Summary Continued ...



Overall Results for sample 11 : M104-3 Endo-2

Number of peaks found: 6 Corr. Area 1: 187.6
 Noise: 0.2

Peak table for sample 11 : M104-3 Endo-2

Peak	Size [bp]	Conc. [pg/μl]	Molarity [pmol/l]	Observations
1	35	125.00	5,411.3	Lower Marker
2	49	297.64	9,239.0	
3	63	203.62	4,870.6	
4	86	66.93	1,181.4	
5	388	11.53	45.0	
6	426	223.08	792.8	
7	467	7.25	23.5	
8	10,380	75.00	10.9	Upper Marker

Region table for sample 11 : M104-3 Endo-2

From [bp]	To [bp]	Average Size [bp]	Molarity [pmol/l]	Conc. [pg/μl]	Corr. Area	% of Total	Size distribution in CV [%]	Color
393	461	425	838.1	234.77	187.6	32	2.7	Blue

Assay Class: High Sensitivity DNA Assay
Data Path: C:\...ents and Settings\Bioanalyzer\2012-08-01\2012-08-01_005.xad

Created: 8/1/2012 3:04:39 PM
Modified: 8/1/2012 3:46:53 PM

Gel Image

