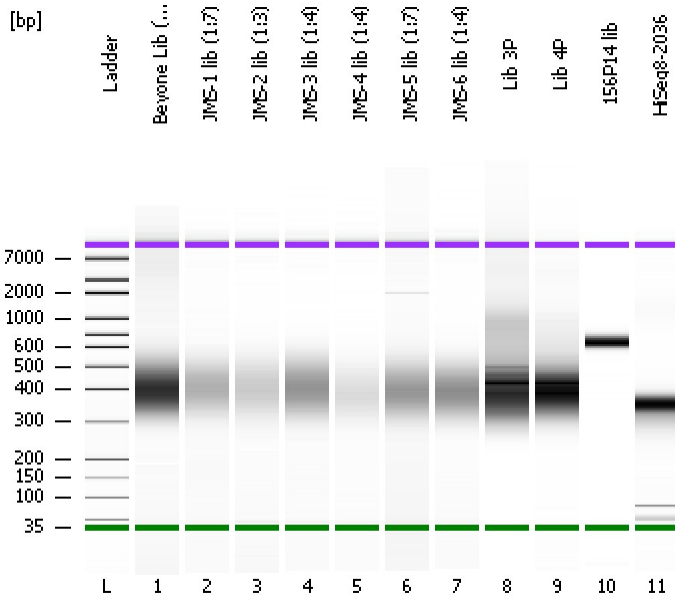


Assay Class: High Sensitivity DNA Assay
Data Path: C:\...ents and Settings\Bioanalyzer\2012-08-02\2012-08-02_001.xad

Created: 8/2/2012 10:26:45 AM
Modified: 8/2/2012 11:09:05 AM

Electrophoresis File Run Summary



Instrument Information:

Instrument Name: DE13701086 Firmware: C.01.069
Serial#: DE13701086 Type: G2938B

Assay Information:

Assay Origin Path: C:\Program Files\Agilent\2100 bioanalyzer\2100 expert\assays\dsDNA\High Sensitivity DNA.xsy
Assay Class: High Sensitivity DNA Assay
Version: 1.03
Assay Comments: Copyright © 2003-2010 Agilent Technologies

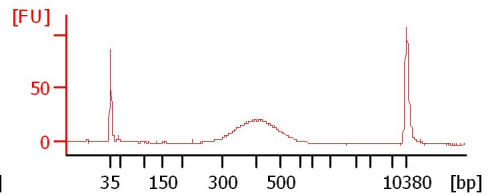
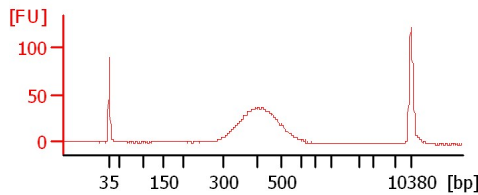
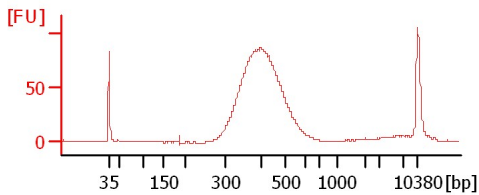
Chip Information:

Chip Lot #:
Reagent Kit Lot #:
Chip Comments:

Beyond Lib (1:25)

JMS-1 lib (1:7)

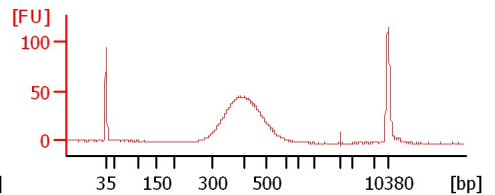
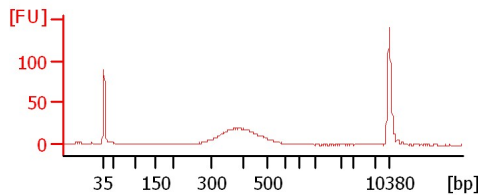
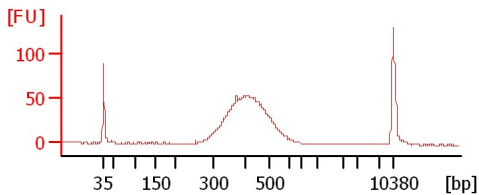
JMS-2 lib (1:3)



JMS-3 lib (1:4)

JMS-4 lib (1:4)

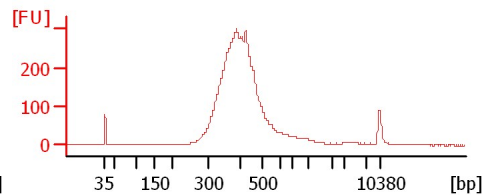
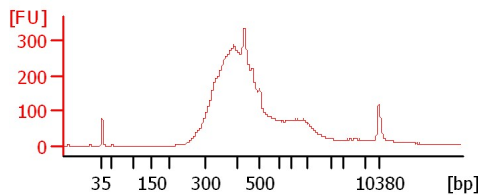
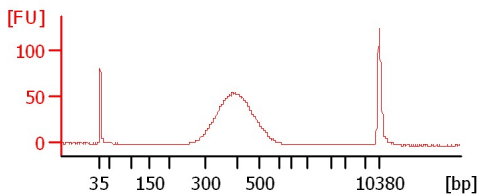
JMS-5 lib (1:7)



JMS-6 lib (1:4)

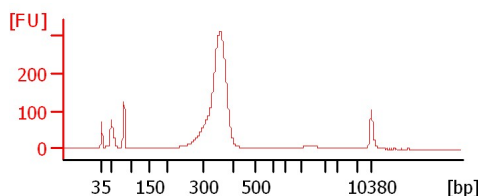
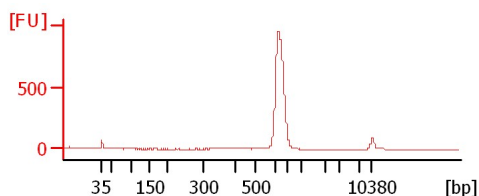
Lib 3P

Lib 4P



156P14 lib

HiSeq8-2036



Assay Class: High Sensitivity DNA Assay
Data Path: C:\...ents and Settings\Bioanalyzer\2012-08-02\2012-08-02_001.xad

Created: 8/2/2012 10:26:45 AM
Modified: 8/2/2012 11:09:05 AM

Electrophoresis File Run Summary (Chip Summary)

Sample Name	Sample Comment	Rest. Digest	Status	Observation	Result Label	Result Color
Beyone Lib (1:25)		<input type="checkbox"/>	✓			
JMS-1 lib (1:7)		<input type="checkbox"/>	✓			
JMS-2 lib (1:3)		<input type="checkbox"/>	✓			
JMS-3 lib (1:4)		<input type="checkbox"/>	✓			
JMS-4 lib (1:4)		<input type="checkbox"/>	✓			
JMS-5 lib (1:7)		<input type="checkbox"/>	✓			
JMS-6 lib (1:4)		<input type="checkbox"/>	✓			
Lib 3P		<input type="checkbox"/>	✓			
Lib 4P		<input type="checkbox"/>	✓			
156P14 lib		<input type="checkbox"/>	✓			
HiSeq8-2036		<input type="checkbox"/>	✓			
Ladder		<input type="checkbox"/>	✓			

Chip Lot #

Reagent Kit Lot #

Chip Comments :

Assay Class: High Sensitivity DNA Assay
 Data Path: C:\...ents and Settings\Bioanalyzer\2012-08-02\2012-08-02_001.xad

Created: 8/2/2012 10:26:45 AM
 Modified: 8/2/2012 11:09:05 AM

Electrophoresis Assay Details

General Analysis Settings

Number of Available Sample and Ladder Wells (Max.) : 12
 Minimum Visible Range [s] : 32
 Maximum Visible Range [s] : 138
 Start Analysis Time Range [s] : 33
 End Analysis Time Range [s] : 137.5
 Ladder Concentration [pg/μl] : 1950
 Uses Standard Area for Ladder Fragments
 Lower Marker Concentration [pg/μl] : 125
 Upper Marker Concentration [pg/μl] : 75
 Used Upper Marker for Quantitation
 Standard Curve Fit is Point to Point
 Show Data Aligned to Lower and Upper Marker

Integrator Settings

Integration Start Time [s] : 33.05
 Integration End Time [s] : 137
 Slope Threshold : 0.8
 Height Threshold [FU] : 5
 Area Threshold : 0.1
 Width Threshold [s] : 0.6
 Baseline Plateau [s] : 0.5

Filter Settings

Filter Width [s] : 0.5
 Polynomial Order : 4

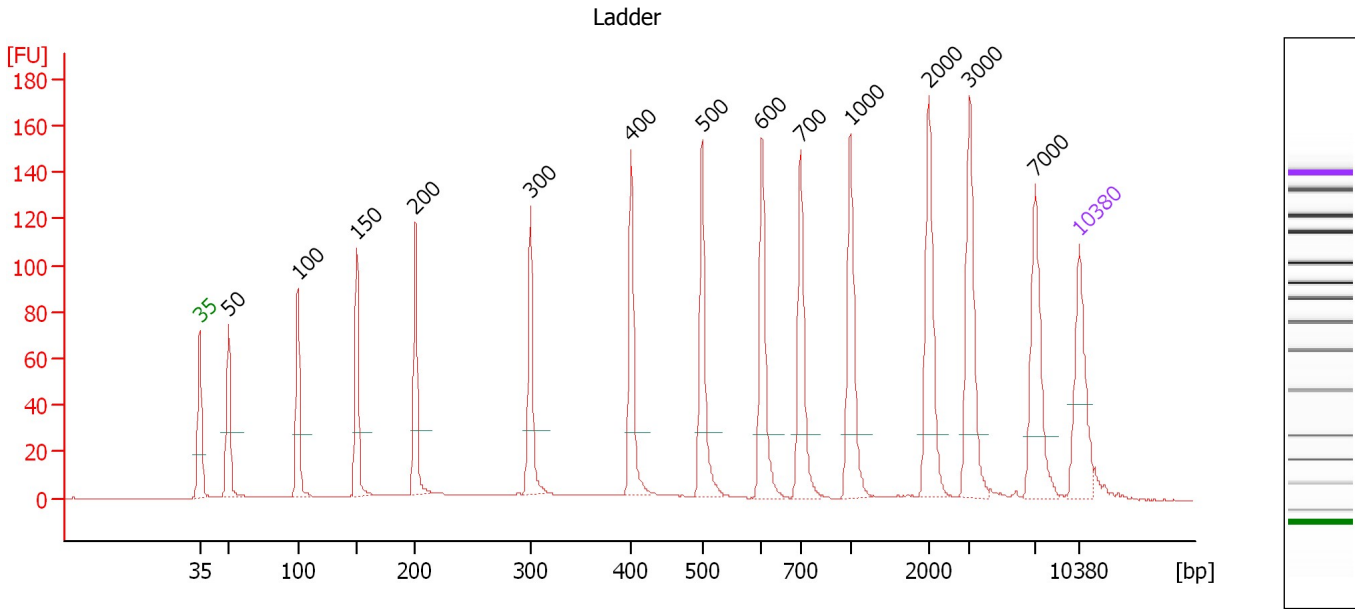
Ladder

Ladder Peak	Size	Area
1	35	160
2	50	210
3	100	208
4	150	221
5	200	242
6	300	270
7	400	305
8	500	306
9	600	336
10	700	321
11	1000	366
12	2000	413
13	3000	411
14	7000	400
15	10380	214

Assay Class: High Sensitivity DNA Assay
 Data Path: C:\...ents and Settings\Bioanalyzer\2012-08-02\2012-08-02_001.xad

Created: 8/2/2012 10:26:45 AM
 Modified: 8/2/2012 11:09:05 AM

Electropherogram Summary



Overall Results for Ladder

Noise: 0.1

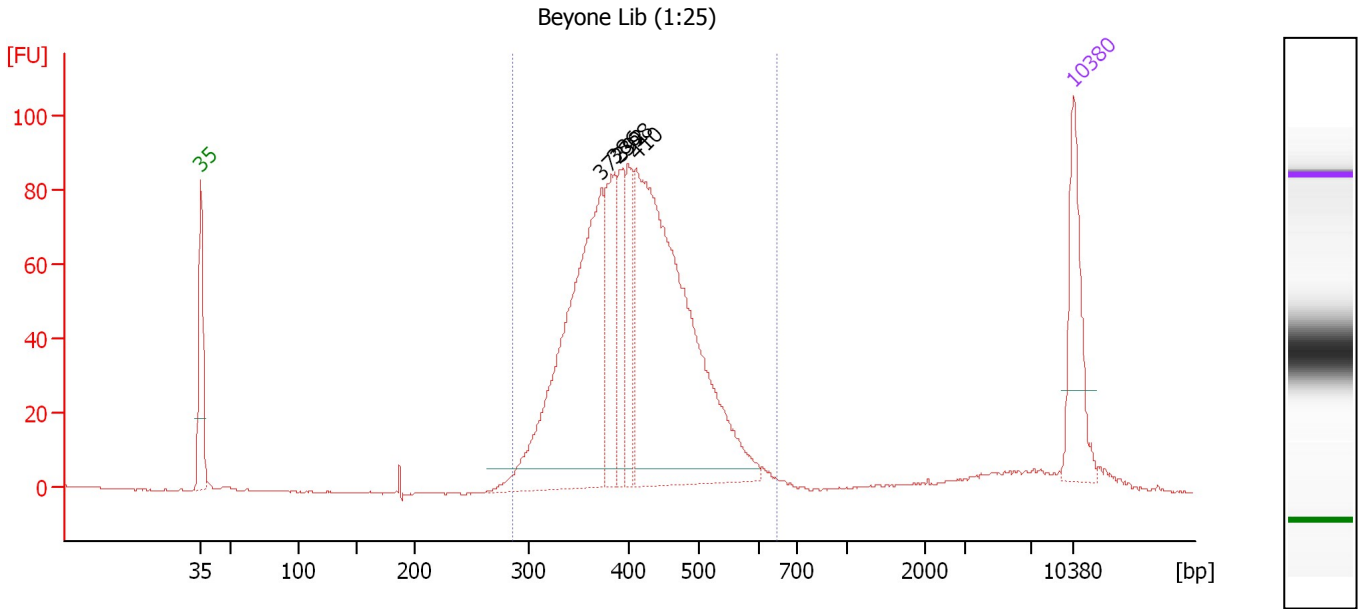
Peak table for Ladder

Peak	Size [bp]	Conc. [pg/μl]	Molarity [pmol/l]	Observations
1	35	125.00	5,411.3	Lower Marker
2	50	150.00	4,545.5	Ladder Peak
3	100	150.00	2,272.7	Ladder Peak
4	150	150.00	1,515.2	Ladder Peak
5	200	150.00	1,136.4	Ladder Peak
6	300	150.00	757.6	Ladder Peak
7	400	150.00	568.2	Ladder Peak
8	500	150.00	454.5	Ladder Peak
9	600	150.00	378.8	Ladder Peak
10	700	150.00	324.7	Ladder Peak
11	1,000	150.00	227.3	Ladder Peak
12	2,000	150.00	113.6	Ladder Peak
13	3,000	150.00	75.8	Ladder Peak
14	7,000	150.00	32.5	Ladder Peak
15	10,380	75.00	10.9	Upper Marker

Assay Class: High Sensitivity DNA Assay
 Data Path: C:\...ents and Settings\Bioanalyzer\2012-08-02\2012-08-02_001.xad

Created: 8/2/2012 10:26:45 AM
 Modified: 8/2/2012 11:09:05 AM

Electropherogram Summary Continued ...



Overall Results for sample 1 : Beyond Lib (1:25)

Number of peaks found: 5 Corr. Area 1: 1,285.9
 Noise: 0.2

Peak table for sample 1 : Beyond Lib (1:25)

Peak	Size [bp]	Conc. [pg/μl]	Molarity [pmol/l]	Observations
1	35	125.00	5,411.3	Lower Marker
2	372	419.06	1,705.8	
3	386	114.00	448.0	
4	392	70.28	271.3	
5	398	74.85	284.7	
6	410	558.24	2,064.2	
7	10,380	75.00	10.9	Upper Marker

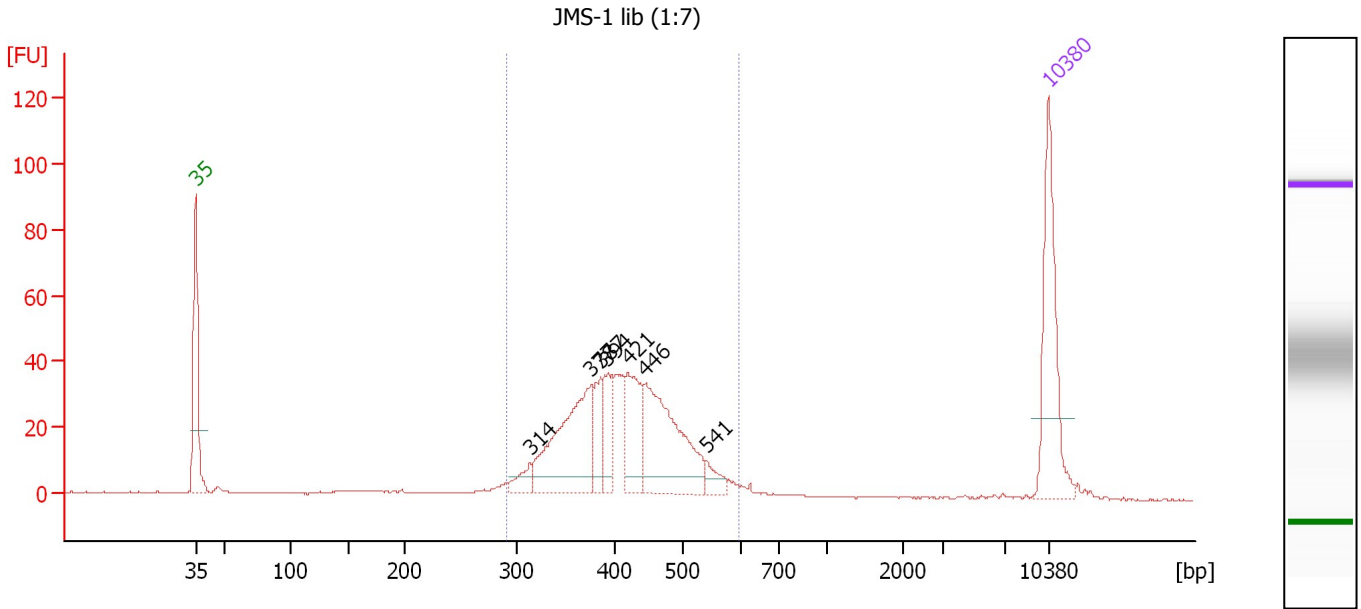
Region table for sample 1 : Beyond Lib (1:25)

From [bp]	To [bp]	Average Size [bp]	Molarity [pmol/l]	Conc. [pg/μl]	Corr. Area	% of Total	Size distribution in CV [%]	Color
286	645	414	4,865.2	1,290.22	1,285.9	94	15.7	Blue

Assay Class: High Sensitivity DNA Assay
 Data Path: C:\...ents and Settings\Bioanalyzer\2012-08-02\2012-08-02_001.xad

Created: 8/2/2012 10:26:45 AM
 Modified: 8/2/2012 11:09:05 AM

Electropherogram Summary Continued ...



Overall Results for sample 2 : JMS-1 lib (1:7)

Number of peaks found: 7 Corr. Area 1: 552.4
 Noise: 0.2

Peak table for sample 2 : JMS-1 lib (1:7)

Peak	Size [bp]	Conc. [pg/μl]	Molarity [pmol/l]	Observations
1	35	125.00	5,411.3	Lower Marker
2	314	15.46	74.6	
3	377	125.26	502.9	
4	387	28.12	110.2	
5	394	32.95	126.8	
6	421	60.87	219.3	
7	446	124.14	421.6	
8	541	12.47	34.9	
9	10,380	75.00	10.9	Upper Marker

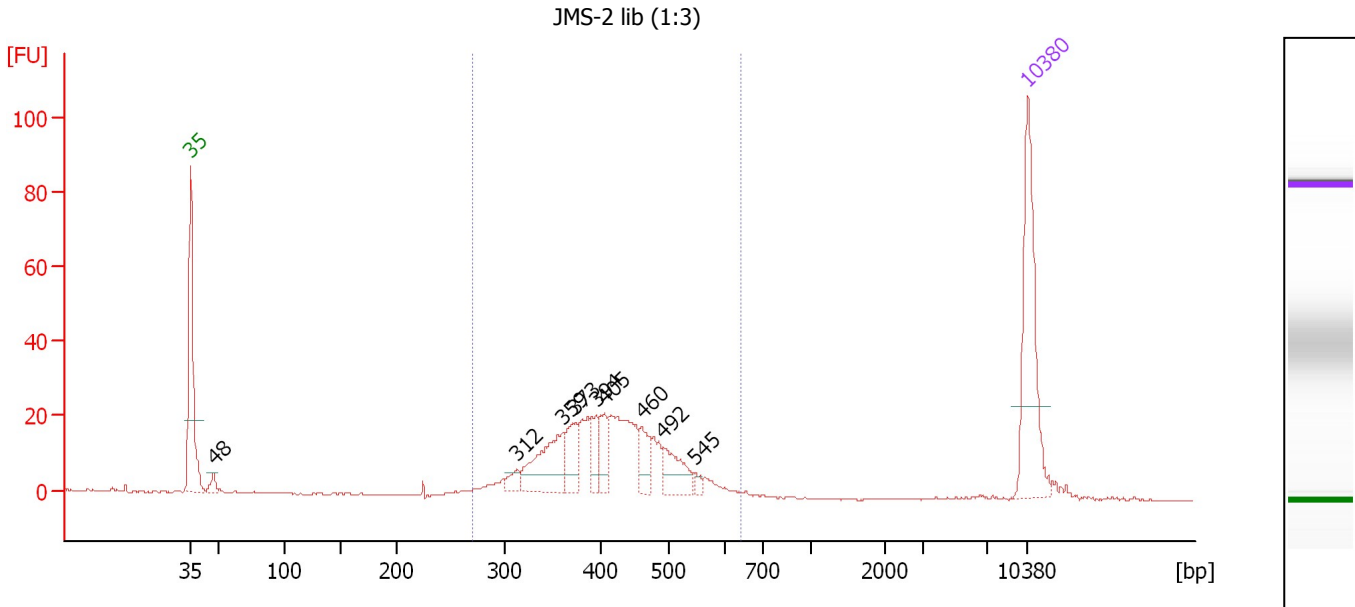
Region table for sample 2 : JMS-1 lib (1:7)

From [bp]	To [bp]	Average Size [bp]	Molarity [pmol/l]	Conc. [pg/μl]	Corr. Area	% of Total	Size distribution in CV [%]	Color
292	598	418	1,772.3	474.69	552.4	90	15.2	Blue

Assay Class: High Sensitivity DNA Assay
 Data Path: C:\...ents and Settings\Bioanalyzer\2012-08-02\2012-08-02_001.xad

Created: 8/2/2012 10:26:45 AM
 Modified: 8/2/2012 11:09:05 AM

Electropherogram Summary Continued ...



Overall Results for sample 3 : JMS-2 lib (1:3)

Number of peaks found: 9 Corr. Area 1: 340.3
 Noise: 0.1

Peak table for sample 3 : JMS-2 lib (1:3)

Peak	Size [bp]	Conc. [pg/μl]	Molarity [pmol/l]	Observations
1	35	125.00	5,411.3	Lower Marker
2	48	8.90	283.6	
3	312	9.58	46.5	
4	359	57.88	244.1	
5	373	27.63	112.2	
6	394	19.24	73.9	
7	405	21.59	80.7	
8	460	20.19	66.5	
9	492	28.48	87.7	
10	545	4.11	11.4	
11	10,380	75.00	10.9	Upper Marker

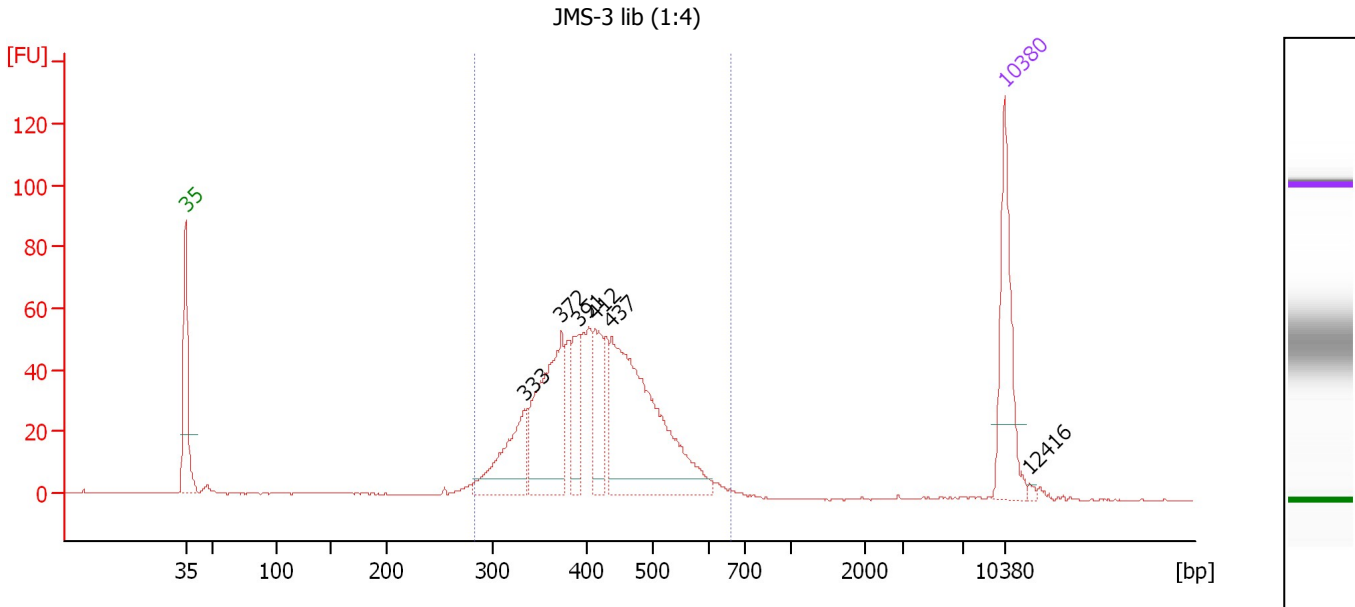
Region table for sample 3 : JMS-2 lib (1:3)

From [bp]	To [bp]	Average Size [bp]	Molarity [pmol/l]	Conc. [pg/μl]	Corr. Area	% of Total	Size distribution in CV [%]	Color
270	641	416	1,258.2	333.29	340.3	94	16.7	Blue

Assay Class: High Sensitivity DNA Assay
 Data Path: C:\...ents and Settings\Bioanalyzer\2012-08-02\2012-08-02_001.xad

Created: 8/2/2012 10:26:45 AM
 Modified: 8/2/2012 11:09:05 AM

Electropherogram Summary Continued ...



Overall Results for sample 4 : JMS-3 lib (1:4)

Number of peaks found: 6 Corr. Area 1: 862.0
 Noise: 0.2

Peak table for sample 4 : JMS-3 lib (1:4)

Peak	Size [bp]	Conc. [pg/μl]	Molarity [pmol/l]	Observations
1	35	125.00	5,411.3	Lower Marker
2	333	87.80	399.2	
3	372	153.87	626.0	
4	391	47.23	183.0	
5	412	60.95	224.3	
6	437	266.61	925.1	
7	10,380	75.00	10.9	Upper Marker
8	12,416	0.00	0.0	

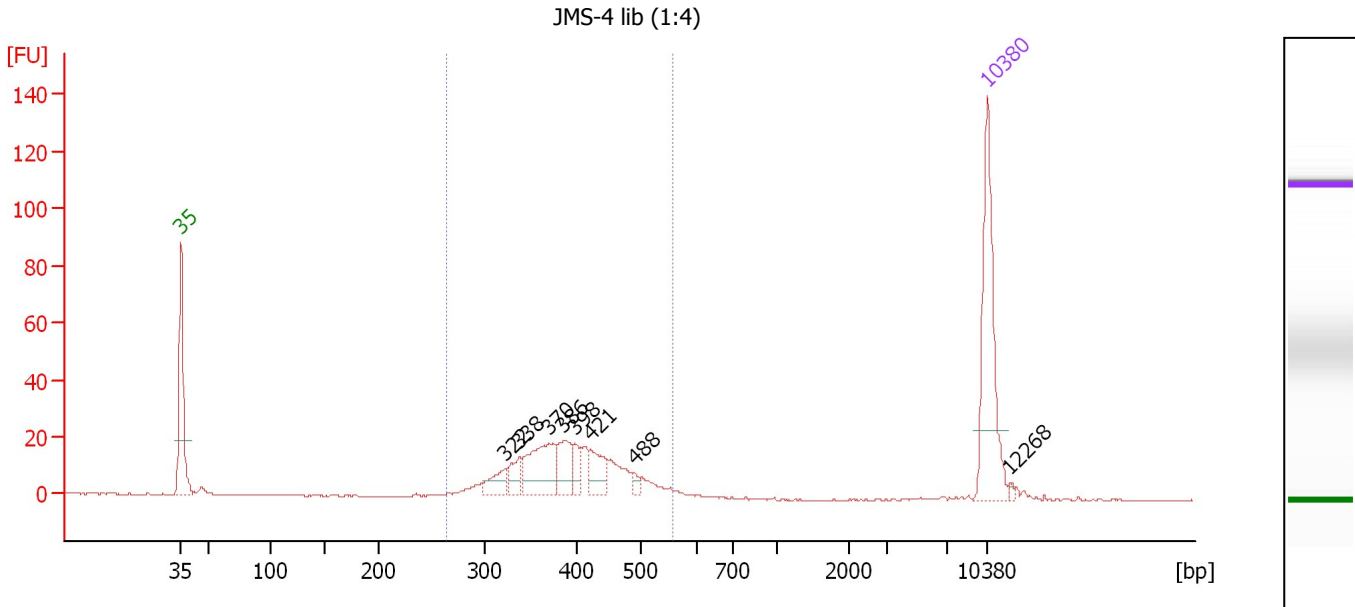
Region table for sample 4 : JMS-3 lib (1:4)

From [bp]	To [bp]	Average Size [bp]	Molarity [pmol/l]	Conc. [pg/μl]	Corr. Area	% of Total	Size distribution in CV [%]	Color
283	662	419	2,826.6	754.97	862.0	95	16.9	Blue

Assay Class: High Sensitivity DNA Assay
 Data Path: C:\...ents and Settings\Bioanalyzer\2012-08-02\2012-08-02_001.xad

Created: 8/2/2012 10:26:45 AM
 Modified: 8/2/2012 11:09:05 AM

Electropherogram Summary Continued ...



Overall Results for sample 5 : JMS-4 lib (1:4)

Number of peaks found: 8 Corr. Area 1: 279.5
 Noise: 0.2

Peak table for sample 5 : JMS-4 lib (1:4)

Peak	Size [bp]	Conc. [pg/μl]	Molarity [pmol/l]	Observations
1	35	125.00	5,411.3	Lower Marker
2	322	17.96	84.5	
3	338	16.10	72.2	
4	370	53.65	219.6	
5	386	24.93	97.9	
6	398	11.88	45.2	
7	421	22.90	82.3	
8	488	5.10	15.8	
9	10,380	75.00	10.9	Upper Marker
10	12,268	0.00	0.0	

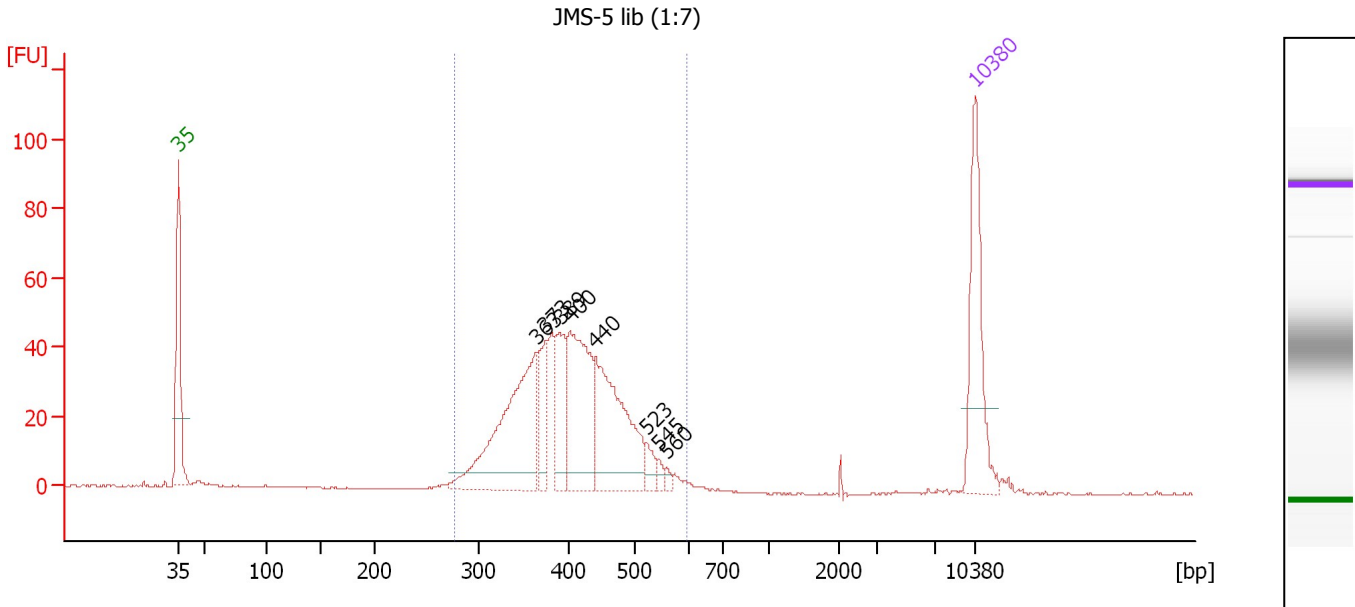
Region table for sample 5 : JMS-4 lib (1:4)

From [bp]	To [bp]	Average Size [bp]	Molarity [pmol/l]	Conc. [pg/μl]	Corr. Area	% of Total	Size distribution in CV [%]	Color
264	557	395	882.7	223.62	279.5	93	15.1	Blue

Assay Class: High Sensitivity DNA Assay
 Data Path: C:\...ents and Settings\Bioanalyzer\2012-08-02\2012-08-02_001.xad

Created: 8/2/2012 10:26:45 AM
 Modified: 8/2/2012 11:09:05 AM

Electropherogram Summary Continued ...



Overall Results for sample 6 : JMS-5 lib (1:7)

Number of peaks found: 8 Corr. Area 1: 660.0
 Noise: 0.2

Peak table for sample 6 : JMS-5 lib (1:7)

Peak	Size [bp]	Conc. [pg/μl]	Molarity [pmol/l]	Observations
1	35	125.00	5,411.3	Lower Marker
2	363	178.28	744.2	
3	373	42.20	171.2	
4	389	54.23	211.1	
5	400	121.64	460.2	
6	440	135.85	467.5	
7	523	12.50	36.2	
8	545	5.56	15.4	
9	560	3.99	10.8	
10	10,380	75.00	10.9	Upper Marker

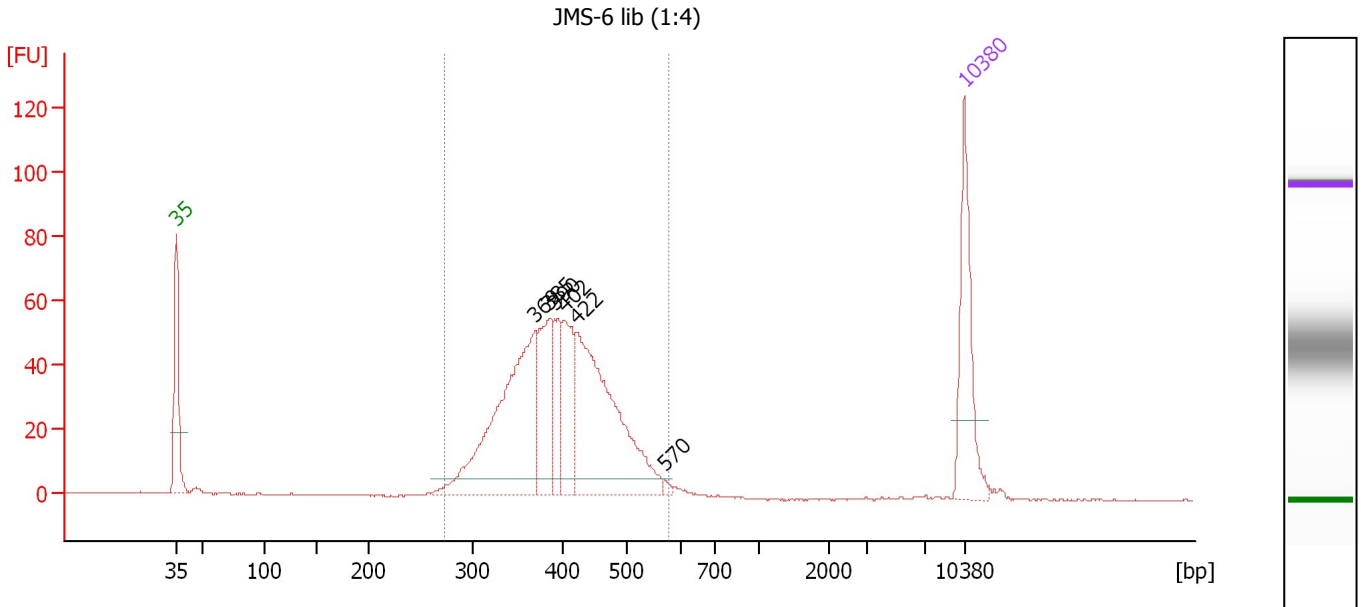
Region table for sample 6 : JMS-5 lib (1:7)

From [bp]	To [bp]	Average Size [bp]	Molarity [pmol/l]	Conc. [pg/μl]	Corr. Area	% of Total	Size distribution in CV [%]	Color
277	597	406	2,320.2	603.79	660.0	96	15.4	Blue

Assay Class: High Sensitivity DNA Assay
 Data Path: C:\...ents and Settings\Bioanalyzer\2012-08-02\2012-08-02_001.xad

Created: 8/2/2012 10:26:45 AM
 Modified: 8/2/2012 11:09:05 AM

Electropherogram Summary Continued ...



Overall Results for sample 7 : JMS-6 lib (1:4)

Number of peaks found: 6 Corr. Area 1: 807.3
 Noise: 0.2

Peak table for sample 7 : JMS-6 lib (1:4)

Peak	Size [bp]	Conc. [pg/μl]	Molarity [pmol/l]	Observations
1	35	125.00	5,411.3	Lower Marker
2	369	254.47	1,044.2	
3	385	91.82	361.2	
4	390	46.72	181.3	
5	402	73.96	279.0	
6	422	238.89	858.3	
7	570	3.28	8.7	
8	10,380	75.00	10.9	Upper Marker

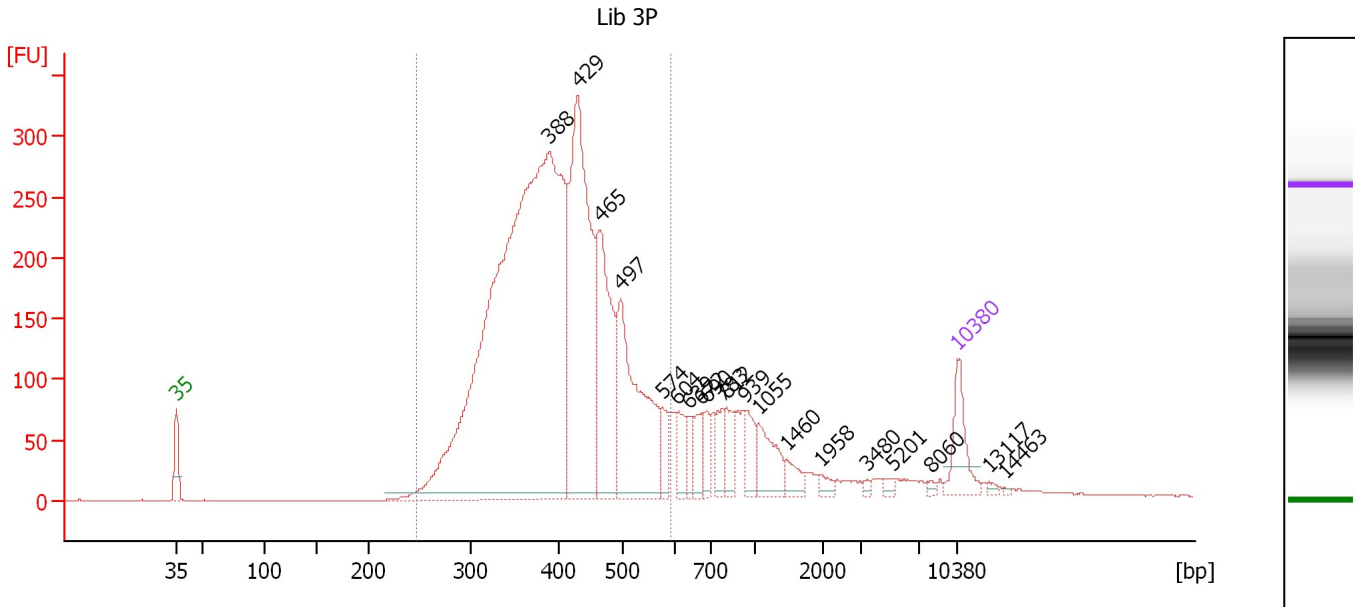
Region table for sample 7 : JMS-6 lib (1:4)

From [bp]	To [bp]	Average Size [bp]	Molarity [pmol/l]	Conc. [pg/μl]	Corr. Area	% of Total	Size distribution in CV [%]	Color
272	578	402	2,840.2	731.41	807.3	96	15.2	Blue

Assay Class: High Sensitivity DNA Assay
 Data Path: C:\...ents and Settings\Bioanalyzer\2012-08-02\2012-08-02_001.xad

Created: 8/2/2012 10:26:45 AM
 Modified: 8/2/2012 11:09:05 AM

Electropherogram Summary Continued ...



Overall Results for sample 8 : Lib 3P

Number of peaks found: 20 Corr. Area 1: 4,812.8
 Noise: 0.1

Peak table for sample 8 : Lib 3P

Peak	Size [bp]	Conc. [pg/μl]	Molarity [pmol/l]	Observations
1	35	125.00	5,411.3	Lower Marker
2	388	2,393.05	9,338.9	
3	429	734.99	2,595.8	
4	465	355.01	1,157.9	
5	497	411.27	1,254.5	
6	574	56.91	150.1	
7	604	55.24	138.6	
8	639	36.71	87.0	
9	672	51.92	117.1	
10	690	41.54	91.2	
11	783	45.95	89.0	
12	812	54.20	101.2	
13	939	54.19	87.5	
14	1,055	86.56	124.4	
15	1,460	30.78	31.9	
16	1,958	12.95	10.0	
17	3,480	5.54	2.4	
18	5,201	7.68	2.2	
19	8,060	5.69	1.1	
20	10,380	75.00	10.9	Upper Marker
21	13,117	0.00	0.0	
22	14,463	0.00	0.0	

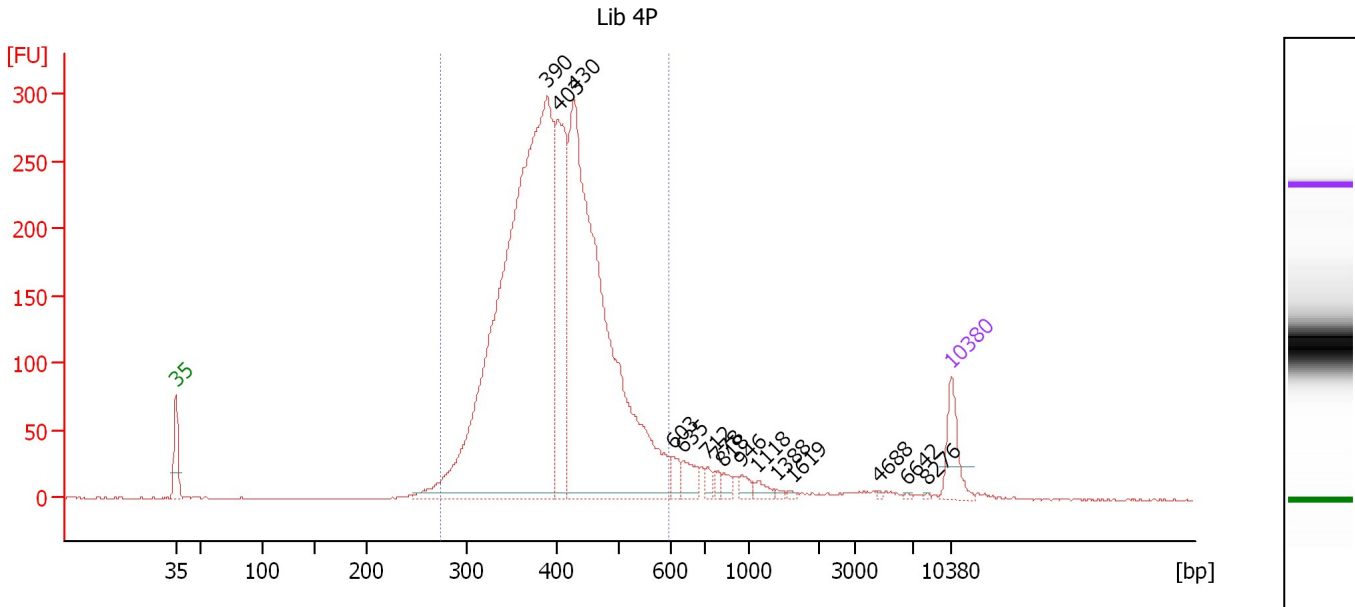
Region table for sample 8 : Lib 3P

From [bp]	To [bp]	Average Size [bp]	Molarity [pmol/l]	Conc. [pg/μl]	Corr. Area	% of Total	Size distribution in CV [%]	Color
247	591	404	15,990.4	4,095.62	4,812.8	83	17.6	Blue

Assay Class: High Sensitivity DNA Assay
 Data Path: C:\...ents and Settings\Bioanalyzer\2012-08-02\2012-08-02_001.xad

Created: 8/2/2012 10:26:45 AM
 Modified: 8/2/2012 11:09:05 AM

Electropherogram Summary Continued ...



Overall Results for sample 9 : Lib 4P

Number of peaks found: 15 Corr. Area 1: 4,035.2
 Noise: 0.5

Peak table for sample 9 : Lib 4P

Peak	Size [bp]	Conc. [pg/μl]	Molarity [pmol/l]	Observations
1	35	125.00	5,411.3	Lower Marker
2	390	2,415.31	9,378.7	
3	403	454.78	1,709.3	
4	430	1,662.41	5,863.6	
5	603	32.71	82.3	
6	635	50.69	120.9	
7	712	21.57	45.9	
8	778	15.69	30.6	
9	818	19.52	36.2	
10	946	23.00	36.8	
11	1,118	19.25	26.1	
12	1,388	6.46	7.1	
13	1,619	4.34	4.1	
14	4,688	3.09	1.0	
15	6,642	2.68	0.6	
16	8,276	2.17	0.4	
17	10,380	75.00	10.9	Upper Marker

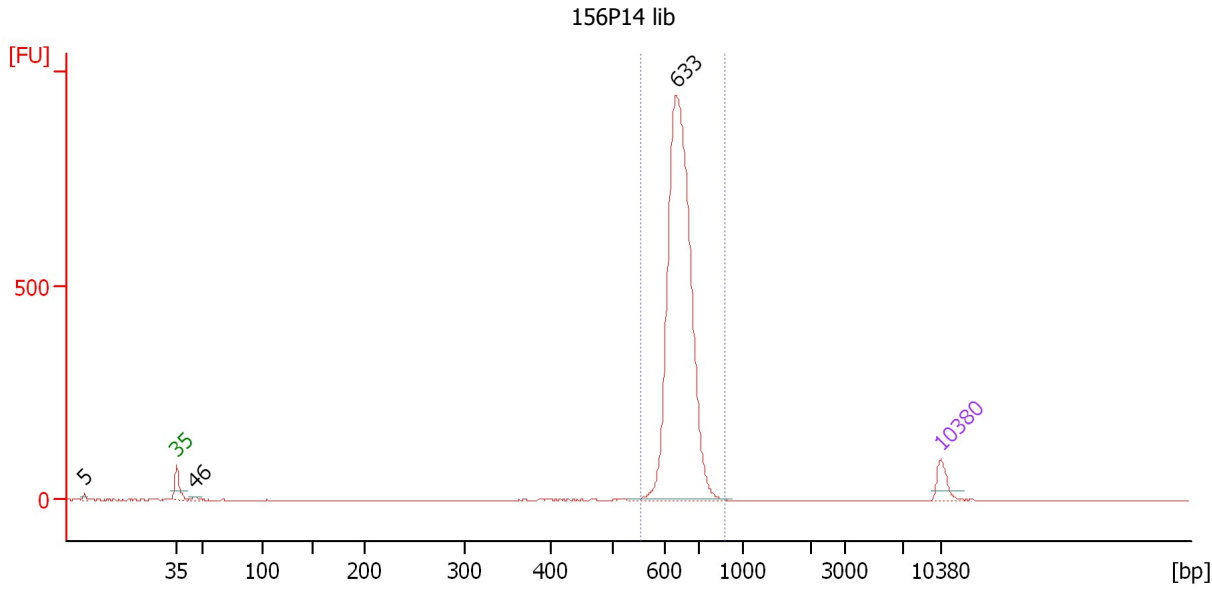
Region table for sample 9 : Lib 4P

From [bp]	To [bp]	Average Size [bp]	Molarity [pmol/l]	Conc. [pg/μl]	Corr. Area	% of Total	Size distribution in CV [%]	Color
273	594	405	17,811.2	4,630.59	4,035.2	93	15.3	Blue

Assay Class: High Sensitivity DNA Assay
 Data Path: C:\...ents and Settings\Bioanalyzer\2012-08-02\2012-08-02_001.xad

Created: 8/2/2012 10:26:45 AM
 Modified: 8/2/2012 11:09:05 AM

Electropherogram Summary Continued ...



Overall Results for sample 10 : 156P14 lib

Number of peaks found: 3 Corr. Area 1: 2,682.3
 Noise: 0.4

Peak table for sample 10 : 156P14 lib

Peak	Size [bp]	Conc. [pg/μl]	Molarity [pmol/l]	Observations
1	5	0.00	0.0	
2	35	125.00	5,411.3	Lower Marker
3	46	19.04	629.8	
4	633	2,777.94	6,651.0	
5	10,380	75.00	10.9	Upper Marker

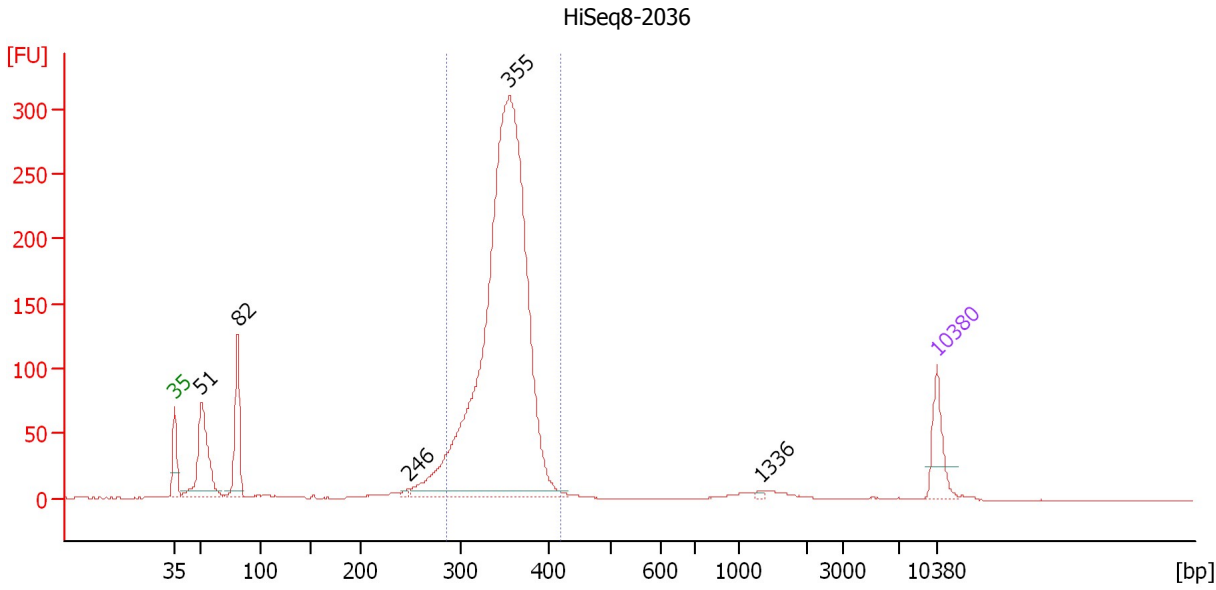
Region table for sample 10 : 156P14 lib

From [bp]	To [bp]	Average Size [bp]	Molarity [pmol/l]	Conc. [pg/μl]	Corr. Area	% of Total	Size distribution in CV [%]	Color
555	877	645	6,552.2	2,784.78	2,682.3	97	5.3	Blue

Assay Class: High Sensitivity DNA Assay
 Data Path: C:\...ents and Settings\Bioanalyzer\2012-08-02\2012-08-02_001.xad

Created: 8/2/2012 10:26:45 AM
 Modified: 8/2/2012 11:09:05 AM

Electropherogram Summary Continued ...



Overall Results for sample 11 : HiSeq8-2036

Number of peaks found: 5 Corr. Area 1: 1,899.3
 Noise: 0.2

Peak table for sample 11 : HiSeq8-2036

Peak	Size [bp]	Conc. [pg/μl]	Molarity [pmol/l]	Observations
1	35	125.00	5,411.3	Lower Marker
2	51	303.27	8,935.8	
3	82	222.06	4,123.1	
4	246	9.47	58.2	
5	355	2,309.58	9,846.6	
6	1,336	4.28	4.9	
7	10,380	75.00	10.9	Upper Marker

Region table for sample 11 : HiSeq8-2036

From [bp]	To [bp]	Average Size [bp]	Molarity [pmol/l]	Conc. [pg/μl]	Corr. Area	% of Total	Size distribution in CV [%]	Color
286	418	349	9,900.9	2,271.73	1,899.3	77	6.9	Blue

Assay Class: High Sensitivity DNA Assay
Data Path: C:\...ents and Settings\Bioanalyzer\2012-08-02\2012-08-02_001.xad

Created: 8/2/2012 10:26:45 AM
Modified: 8/2/2012 11:09:05 AM

Gel Image

