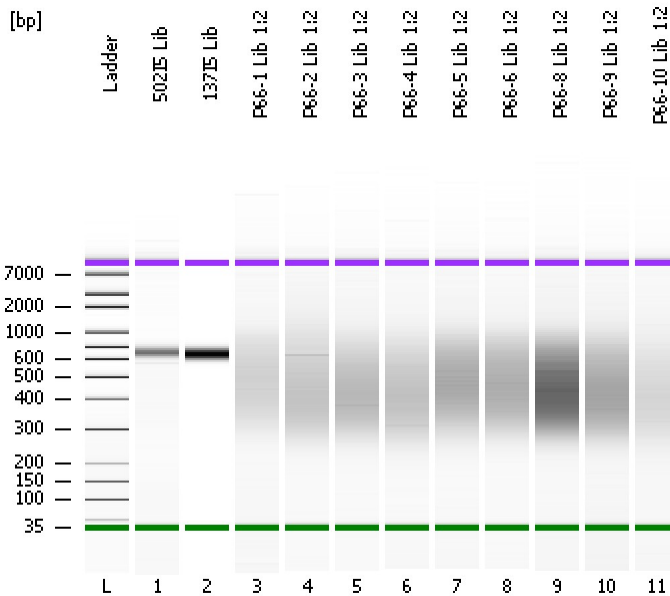


Assay Class: High Sensitivity DNA Assay
Data Path: C:\...ents and Settings\Bioanalyzer\2012-08-02\2012-08-02_002.xad

Created: 8/2/2012 2:10:10 PM
Modified: 8/2/2012 2:52:27 PM

Electrophoresis File Run Summary



Instrument Information:

Instrument Name: DE13701086 Firmware: C.01.069
Serial#: DE13701086 Type: G2938B

Assay Information:

Assay Origin Path: C:\Program Files\Agilent\2100 bioanalyzer\2100 expert\assays\dsDNA\High Sensitivity DNA.xsy
Assay Class: High Sensitivity DNA Assay
Version: 1.03
Assay Comments: Copyright © 2003-2010 Agilent Technologies

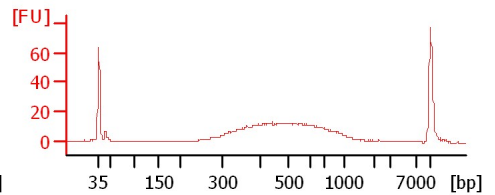
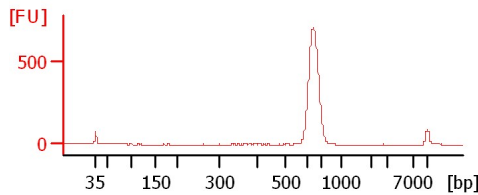
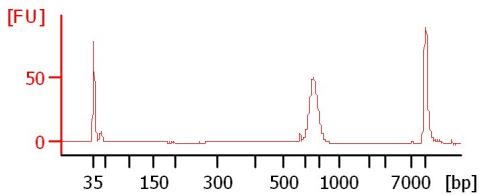
Chip Information:

Chip Lot #:
Reagent Kit Lot #:
Chip Comments:

50215 Lib

13715 Lib

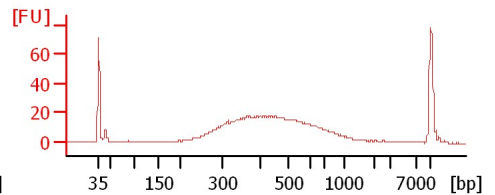
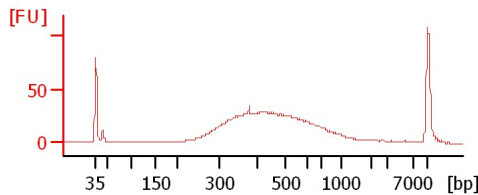
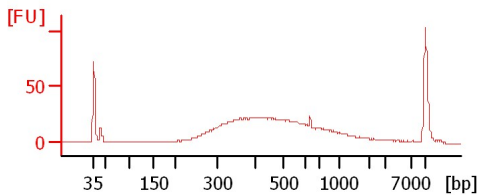
P66-1 Lib 1:2



P66-2 Lib 1:2

P66-3 Lib 1:2

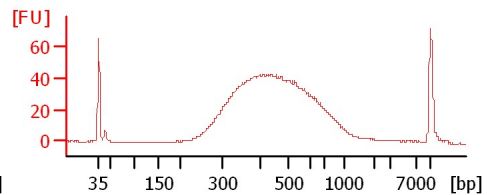
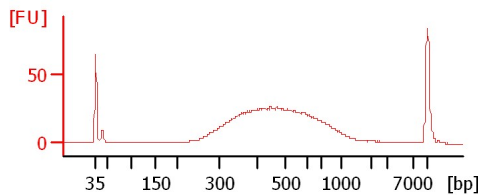
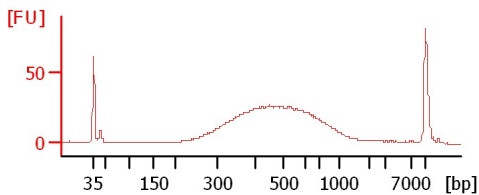
P66-4 Lib 1:2



P66-5 Lib 1:2

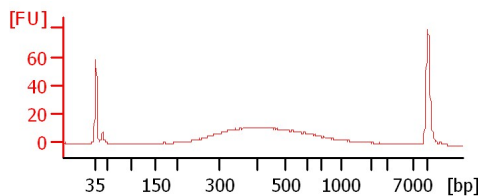
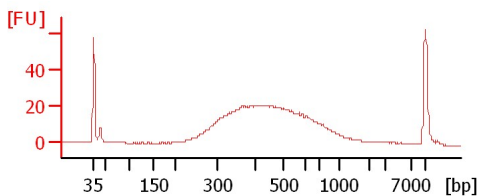
P66-6 Lib 1:2

P66-8 Lib 1:2



P66-9 Lib 1:2

P66-10 Lib 1:2



Assay Class: High Sensitivity DNA Assay
Data Path: C:\...ents and Settings\Bioanalyzer\2012-08-02\2012-08-02_002.xad

Created: 8/2/2012 2:10:10 PM
Modified: 8/2/2012 2:52:27 PM

Electrophoresis File Run Summary (Chip Summary)

Sample Name	Sample Comment	Rest. Digest	Status	Observation	Result Label	Result Color
502I5 Lib		<input type="checkbox"/>	✓			
137I5 Lib		<input type="checkbox"/>	✓			
P66-1 Lib 1:2		<input type="checkbox"/>	✓			
P66-2 Lib 1:2		<input type="checkbox"/>	✓			
P66-3 Lib 1:2		<input type="checkbox"/>	✓			
P66-4 Lib 1:2		<input type="checkbox"/>	✓			
P66-5 Lib 1:2		<input type="checkbox"/>	✓			
P66-6 Lib 1:2		<input type="checkbox"/>	✓			
P66-8 Lib 1:2		<input type="checkbox"/>	✓			
P66-9 Lib 1:2		<input type="checkbox"/>	✓			
P66-10 Lib 1:2		<input type="checkbox"/>	✓			
Ladder		<input type="checkbox"/>	✓			

Chip Lot #

Reagent Kit Lot #

Chip Comments :

Assay Class: High Sensitivity DNA Assay
Data Path: C:\...ents and Settings\Bioanalyzer\2012-08-02\2012-08-02_002.xad

Created: 8/2/2012 2:10:10 PM
Modified: 8/2/2012 2:52:27 PM

Electrophoresis Assay Details

General Analysis Settings

Number of Available Sample and Ladder Wells (Max.) : 12
Minimum Visible Range [s] : 32
Maximum Visible Range [s] : 138
Start Analysis Time Range [s] : 33
End Analysis Time Range [s] : 137.5
Ladder Concentration [pg/μl] : 1950
Uses Standard Area for Ladder Fragments
Lower Marker Concentration [pg/μl] : 125
Upper Marker Concentration [pg/μl] : 75
Used Upper Marker for Quantitation
Standard Curve Fit is Point to Point
Show Data Aligned to Lower and Upper Marker

Integrator Settings

Integration Start Time [s] : 33.05
Integration End Time [s] : 137
Slope Threshold : 0.8
Height Threshold [FU] : 5
Area Threshold : 0.1
Width Threshold [s] : 0.6
Baseline Plateau [s] : 0.5

Filter Settings

Filter Width [s] : 0.5
Polynomial Order : 4

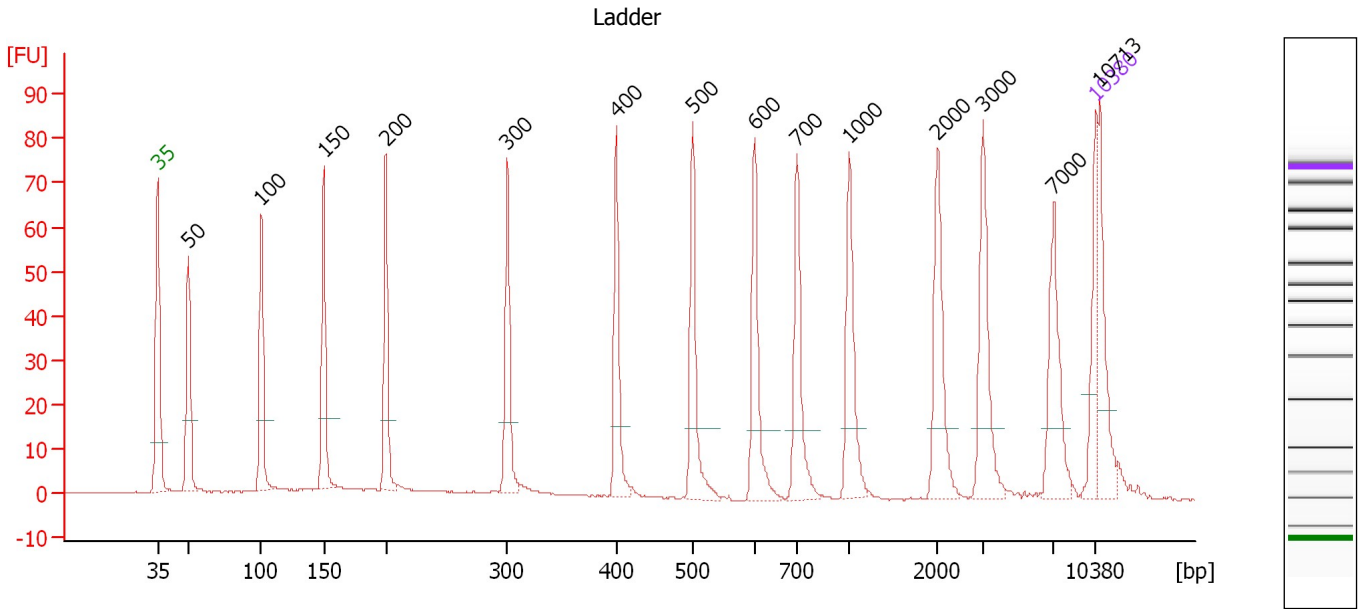
Ladder

Ladder Peak	Size	Area
1	35	160
2	50	210
3	100	208
4	150	221
5	200	242
6	300	270
7	400	305
8	500	306
9	600	336
10	700	321
11	1000	366
12	2000	413
13	3000	411
14	7000	400
15	10380	214

Assay Class: High Sensitivity DNA Assay
 Data Path: C:\...ents and Settings\Bioanalyzer\2012-08-02\2012-08-02_002.xad

Created: 8/2/2012 2:10:10 PM
 Modified: 8/2/2012 2:52:27 PM

Electropherogram Summary



Overall Results for Ladder

Noise: 0.1

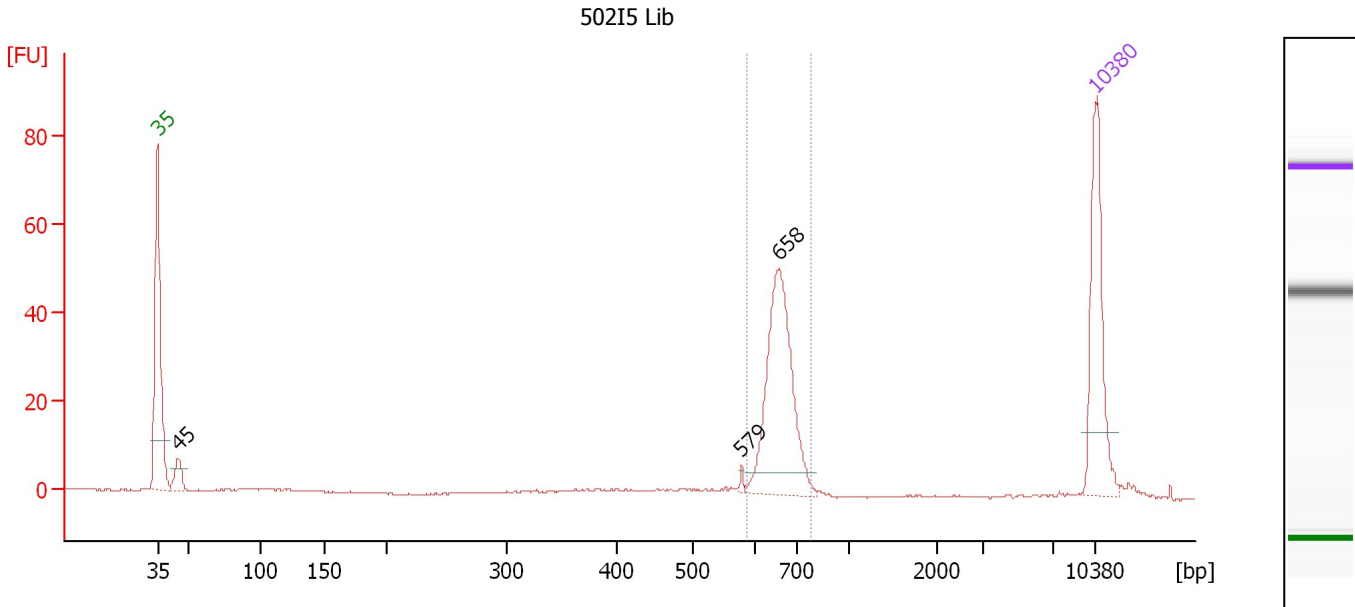
Peak table for Ladder

Peak	Size [bp]	Conc. [pg/μl]	Molarity [pmol/l]	Observations
1	35	125.00	5,411.3	Lower Marker
2	50	150.00	4,545.5	Ladder Peak
3	100	150.00	2,272.7	Ladder Peak
4	150	150.00	1,515.2	Ladder Peak
5	200	150.00	1,136.4	Ladder Peak
6	300	150.00	757.6	Ladder Peak
7	400	150.00	568.2	Ladder Peak
8	500	150.00	454.5	Ladder Peak
9	600	150.00	378.8	Ladder Peak
10	700	150.00	324.7	Ladder Peak
11	1,000	150.00	227.3	Ladder Peak
12	2,000	150.00	113.6	Ladder Peak
13	3,000	150.00	75.8	Ladder Peak
14	7,000	150.00	32.5	Ladder Peak
15	10,380	75.00	10.9	Upper Marker
16	10,713	0.00	0.0	

Assay Class: High Sensitivity DNA Assay
 Data Path: C:\...ents and Settings\Bioanalyzer\2012-08-02\2012-08-02_002.xad

Created: 8/2/2012 2:10:10 PM
 Modified: 8/2/2012 2:52:27 PM

Electropherogram Summary Continued ...



Overall Results for sample 1 : 502I5 Lib

Number of peaks found: 3 Corr. Area 1: 130.5
 Noise: 0.1

Peak table for sample 1 : 502I5 Lib

Peak	Size [bp]	Conc. [pg/μl]	Molarity [pmol/l]	Observations
1	35	125.00	5,411.3	Lower Marker
2	45	20.58	695.3	
3	579	2.12	5.5	
4	658	158.18	364.1	
5	10,380	75.00	10.9	Upper Marker

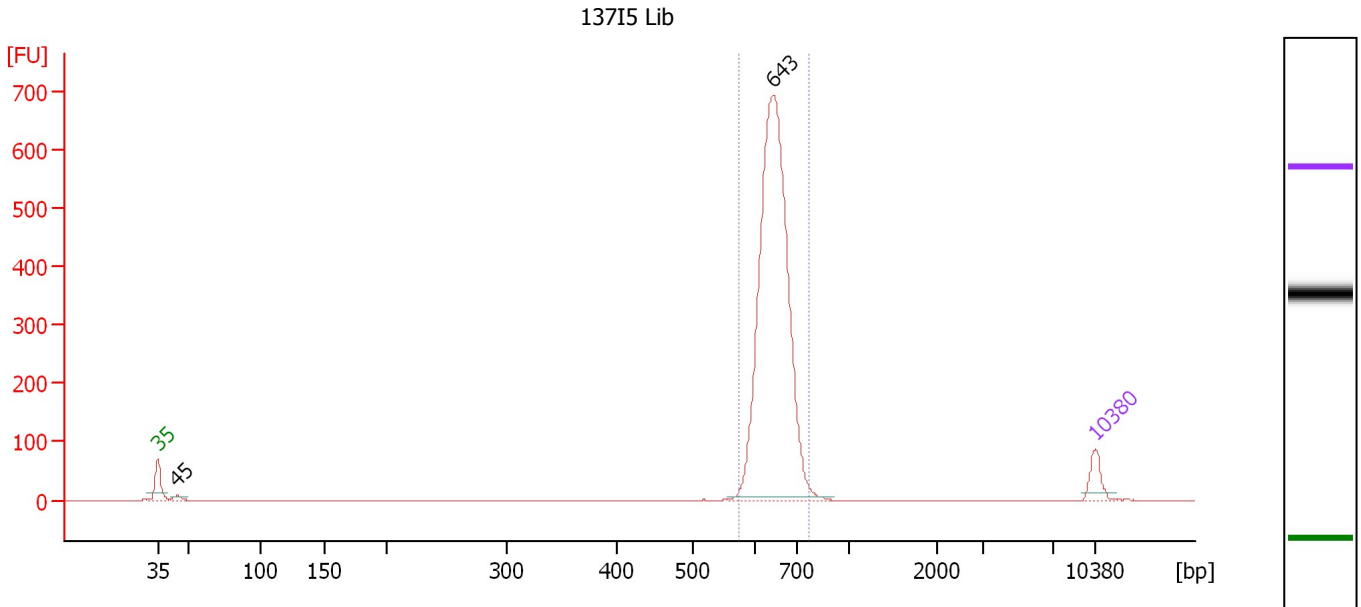
Region table for sample 1 : 502I5 Lib

From [bp]	To [bp]	Average Size [bp]	Molarity [pmol/l]	Conc. [pg/μl]	Corr. Area	% of Total	Size distribution in CV [%]	Color
586	785	660	366.1	159.27	130.5	70	4.8	Blue

Assay Class: High Sensitivity DNA Assay
 Data Path: C:\...ents and Settings\Bioanalyzer\2012-08-02\2012-08-02_002.xad

Created: 8/2/2012 2:10:10 PM
 Modified: 8/2/2012 2:52:27 PM

Electropherogram Summary Continued ...



Overall Results for sample 2 : 13715 Lib

Number of peaks found: 2 Corr. Area 1: 1,992.6
 Noise: 0.1

Peak table for sample 2 : 13715 Lib

Peak	Size [bp]	Conc. [pg/μl]	Molarity [pmol/l]	Observations
1	35	125.00	5,411.3	Lower Marker
2	45	23.36	794.5	
3	643	2,542.13	5,987.1	
4	10,380	75.00	10.9	Upper Marker

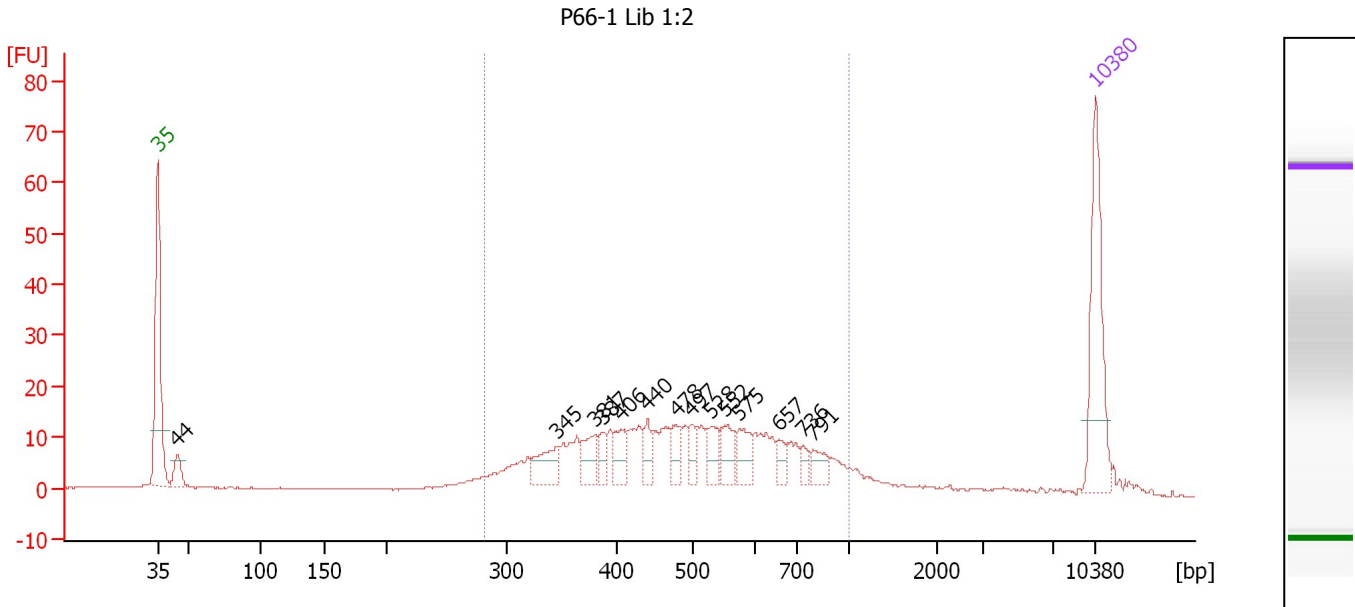
Region table for sample 2 : 13715 Lib

From [bp]	To [bp]	Average Size [bp]	Molarity [pmol/l]	Conc. [pg/μl]	Corr. Area	% of Total	Size distribution in CV [%]	Color
574	771	646	5,926.1	2,522.85	1,992.6	97	4.8	Blue

Assay Class: High Sensitivity DNA Assay
 Data Path: C:\...ents and Settings\Bioanalyzer\2012-08-02\2012-08-02_002.xad

Created: 8/2/2012 2:10:10 PM
 Modified: 8/2/2012 2:52:27 PM

Electropherogram Summary Continued ...



Overall Results for sample 3 : P66-1 Lib 1:2

Number of peaks found: 14 Corr. Area 1: 348.6
 Noise: 0.1

Peak table for sample 3 : P66-1 Lib 1:2

Peak	Size [bp]	Conc. [pg/μl]	Molarity [pmol/l]	Observations
1	35	125.00	5,411.3	Lower Marker
2	44	22.43	764.0	
3	345	32.73	143.9	
4	381	25.70	102.3	
5	387	13.94	54.6	
6	406	22.79	85.0	
7	440	16.21	55.8	
8	478	18.90	59.9	
9	497	14.42	43.9	
10	528	19.51	55.9	
11	552	24.58	67.5	
12	575	21.46	56.5	
13	657	11.42	26.3	
14	736	8.36	17.2	
15	791	14.38	27.6	
16	10,380	75.00	10.9	Upper Marker

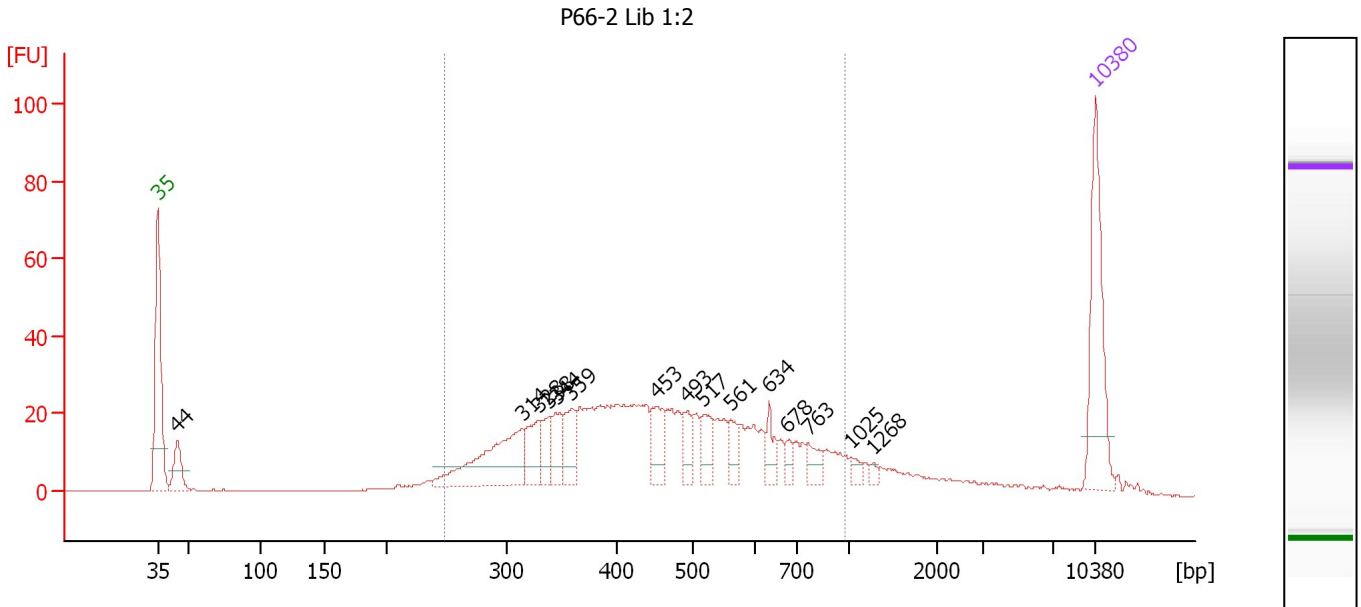
Region table for sample 3 : P66-1 Lib 1:2

From [bp]	To [bp]	Average Size [bp]	Molarity [pmol/l]	Conc. [pg/μl]	Corr. Area	% of Total	Size distribution in CV [%]	Color
281	1,004	510	1,879.6	563.82	348.6	79	30.5	Blue

Assay Class: High Sensitivity DNA Assay
 Data Path: C:\...ents and Settings\Bioanalyzer\2012-08-02\2012-08-02_002.xad

Created: 8/2/2012 2:10:10 PM
 Modified: 8/2/2012 2:52:27 PM

Electropherogram Summary Continued ...



Overall Results for sample 4 : P66-2 Lib 1:2

Number of peaks found: 15 Corr. Area 1: 662.5
 Noise: 0.2

Peak table for sample 4 : P66-2 Lib 1:2

Peak	Size [bp]	Conc. [pg/μl]	Molarity [pmol/l]	Observations
1	35	125.00	5,411.3	Lower Marker
2	44	37.00	1,261.4	
3	314	105.12	507.5	
4	328	38.68	178.6	
5	338	22.13	99.1	
6	344	28.25	124.3	
7	359	33.50	141.6	
8	453	34.79	116.5	
9	493	19.26	59.1	
10	517	25.49	74.7	
11	561	17.48	47.2	
12	634	17.28	41.3	
13	678	9.96	22.2	
14	763	15.22	30.2	
15	1,025	6.08	9.0	
16	1,268	3.34	4.0	
17	10,380	75.00	10.9	Upper Marker

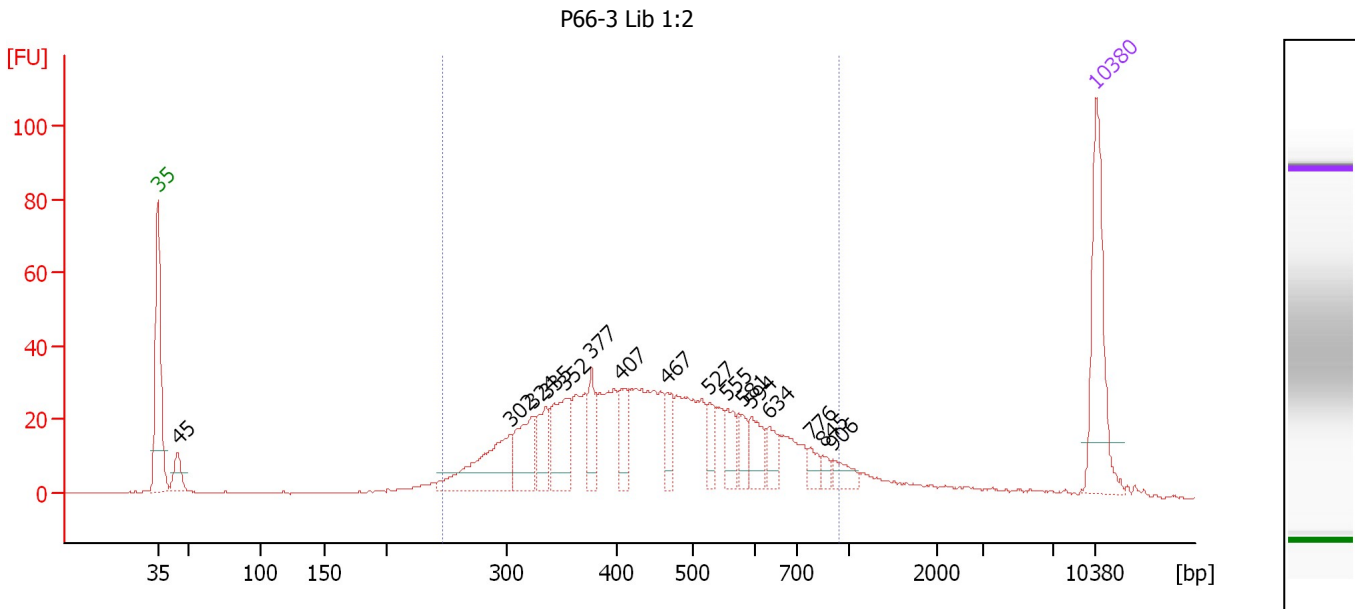
Region table for sample 4 : P66-2 Lib 1:2

From [bp]	To [bp]	Average Size [bp]	Molarity [pmol/l]	Conc. [pg/μl]	Corr. Area	% of Total	Size distribution in CV [%]	Color
248	972	472	3,074.7	838.48	662.5	81	32.5	Blue

Assay Class: High Sensitivity DNA Assay
 Data Path: C:\...ents and Settings\Bioanalyzer\2012-08-02\2012-08-02_002.xad

Created: 8/2/2012 2:10:10 PM
 Modified: 8/2/2012 2:52:27 PM

Electropherogram Summary Continued ...



Overall Results for sample 5 : P66-3 Lib 1:2

Number of peaks found: 16 Corr. Area 1: 791.3
 Noise: 0.1

Peak table for sample 5 : P66-3 Lib 1:2

Peak	Size [bp]	Conc. [pg/μl]	Molarity [pmol/l]	Observations
1	35	125.00	5,411.3	Lower Marker
2	45	25.35	860.2	
3	302	85.47	428.3	
4	324	52.39	245.3	
5	335	35.49	160.4	
6	352	57.26	246.3	
7	377	28.26	113.7	
8	407	29.13	108.5	
9	467	22.97	74.6	
10	527	19.16	55.1	
11	555	21.86	59.7	
12	581	17.48	45.5	
13	594	26.91	68.6	
14	634	18.19	43.5	
15	776	11.10	21.7	
16	845	6.65	11.9	
17	906	12.70	21.2	
18	10,380	75.00	10.9	Upper Marker

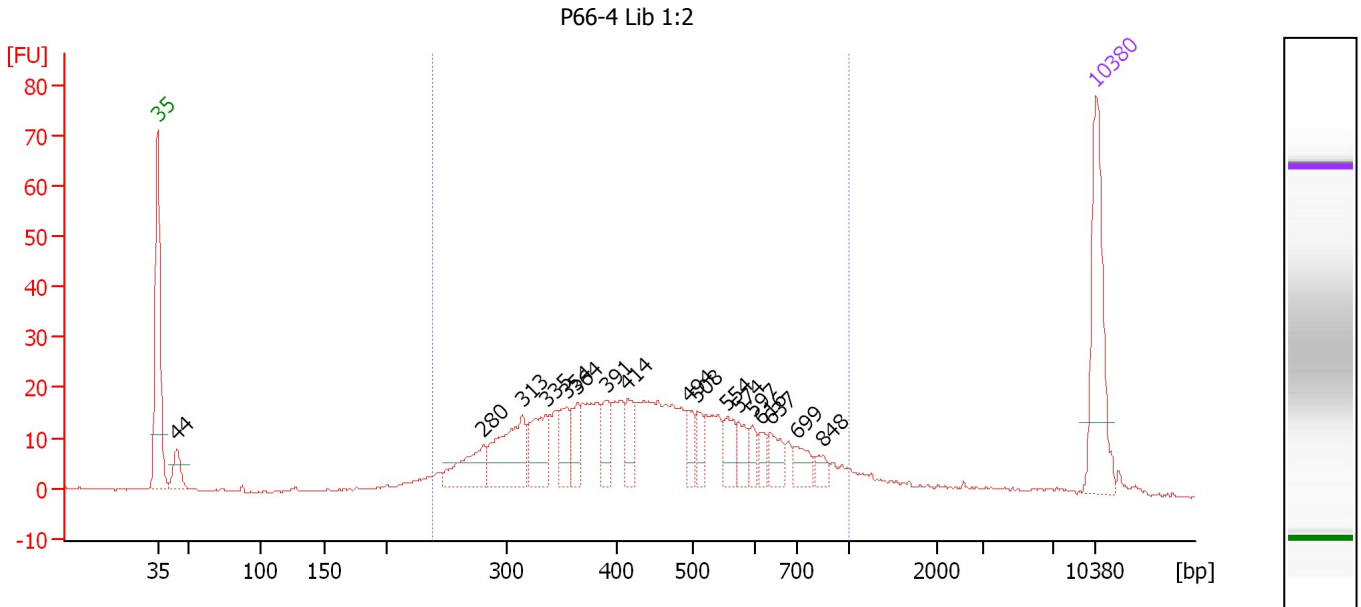
Region table for sample 5 : P66-3 Lib 1:2

From [bp]	To [bp]	Average Size [bp]	Molarity [pmol/l]	Conc. [pg/μl]	Corr. Area	% of Total	Size distribution in CV [%]	Color
247	943	464	3,237.2	882.07	791.3	85	30.2	Blue

Assay Class: High Sensitivity DNA Assay
 Data Path: C:\...ents and Settings\Bioanalyzer\2012-08-02\2012-08-02_002.xad

Created: 8/2/2012 2:10:10 PM
 Modified: 8/2/2012 2:52:27 PM

Electropherogram Summary Continued ...



Overall Results for sample 6 : P66-4 Lib 1:2

Number of peaks found: 17 Corr. Area 1: 514.7
 Noise: 0.2

Peak table for sample 6 : P66-4 Lib 1:2

Peak	Size [bp]	Conc. [pg/μl]	Molarity [pmol/l]	Observations
1	35	125.00	5,411.3	Lower Marker
2	44	27.41	933.9	
3	280	47.39	256.6	
4	313	78.18	378.0	
5	335	47.94	216.8	
6	354	28.73	123.1	
7	364	23.98	99.8	
8	391	27.19	105.4	
9	414	23.23	85.0	
10	494	17.85	54.8	
11	508	17.12	51.1	
12	554	21.23	58.0	
13	574	16.04	42.3	
14	597	11.92	30.3	
15	616	11.04	27.1	
16	637	18.61	44.3	
17	699	16.91	36.6	
18	848	9.57	17.1	
19	10,380	75.00	10.9	Upper Marker

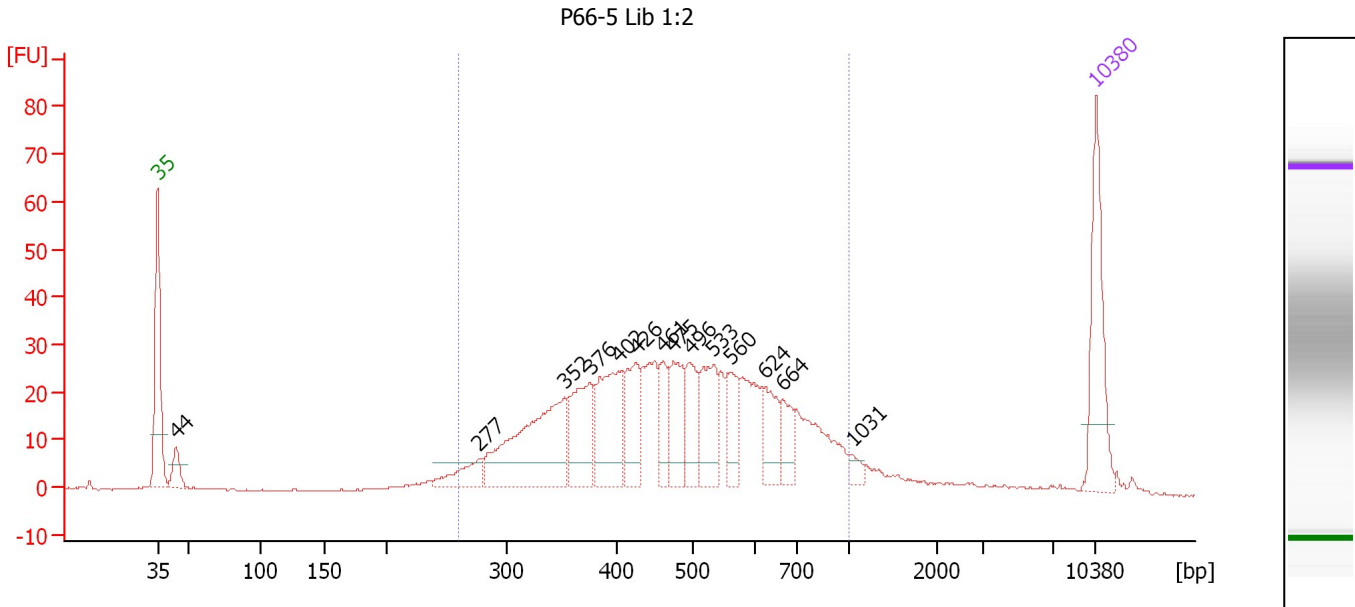
Region table for sample 6 : P66-4 Lib 1:2

From [bp]	To [bp]	Average Size [bp]	Molarity [pmol/l]	Conc. [pg/μl]	Corr. Area	% of Total	Size distribution in CV [%]	Color
238	1,000	462	2,931.3	782.85	514.7	88	32.4	Blue

Assay Class: High Sensitivity DNA Assay
 Data Path: C:\...ents and Settings\Bioanalyzer\2012-08-02\2012-08-02_002.xad

Created: 8/2/2012 2:10:10 PM
 Modified: 8/2/2012 2:52:27 PM

Electropherogram Summary Continued ...



Overall Results for sample 7 : P66-5 Lib 1:2

Number of peaks found: 14 Corr. Area 1: 699.4
 Noise: 0.1

Peak table for sample 7 : P66-5 Lib 1:2

Peak	Size [bp]	Conc. [pg/μl]	Molarity [pmol/l]	Observations
1	35	125.00	5,411.3	Lower Marker
2	44	26.97	923.7	
3	277	33.82	185.0	
4	352	166.54	716.0	
5	376	78.78	317.8	
6	402	93.96	354.4	
7	426	62.67	223.0	
8	461	33.78	111.1	
9	475	49.84	159.0	
10	496	46.05	140.6	
11	533	61.97	176.2	
12	560	37.06	100.2	
13	624	41.36	100.4	
14	664	27.00	61.6	
15	1,031	8.59	12.6	
16	10,380	75.00	10.9	Upper Marker

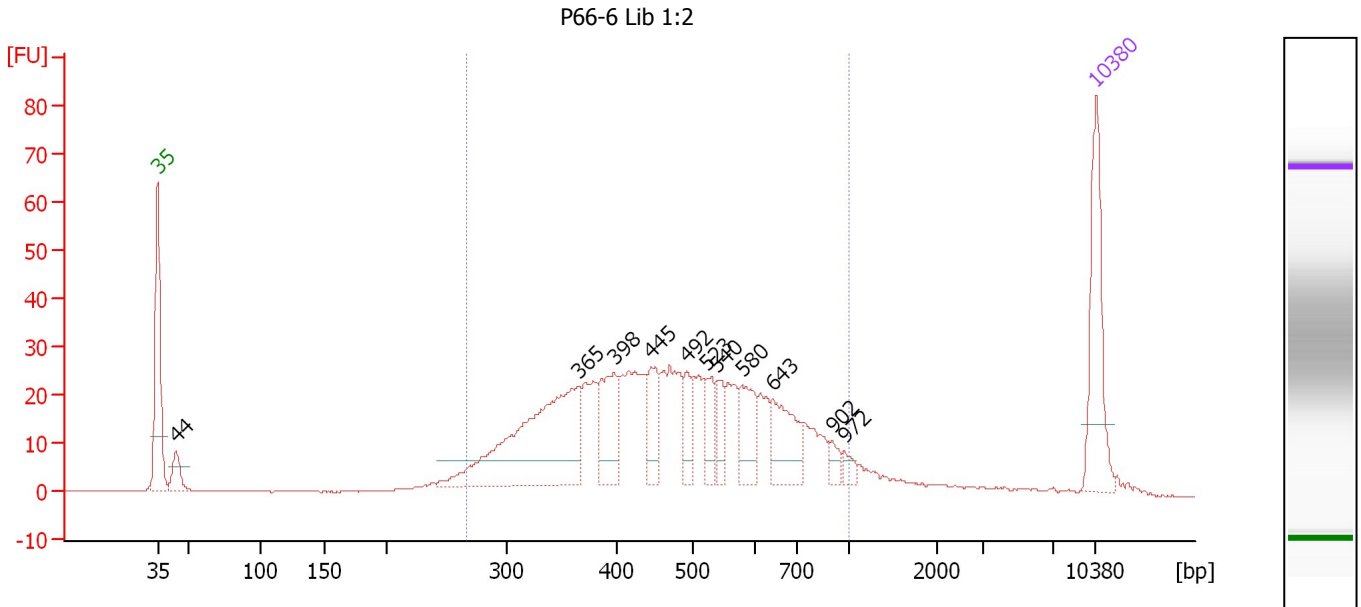
Region table for sample 7 : P66-5 Lib 1:2

From [bp]	To [bp]	Average Size [bp]	Molarity [pmol/l]	Conc. [pg/μl]	Corr. Area	% of Total	Size distribution in CV [%]	Color
260	1,000	494	3,609.2	1,045.89	699.4	88	30.5	Blue

Assay Class: High Sensitivity DNA Assay
 Data Path: C:\...ents and Settings\Bioanalyzer\2012-08-02\2012-08-02_002.xad

Created: 8/2/2012 2:10:10 PM
 Modified: 8/2/2012 2:52:27 PM

Electropherogram Summary Continued ...



Overall Results for sample 8 : P66-6 Lib 1:2

Number of peaks found: 11 Corr. Area 1: 676.7
 Noise: 0.1

Peak table for sample 8 : P66-6 Lib 1:2

Peak	Size [bp]	Conc. [pg/μl]	Molarity [pmol/l]	Observations
1	35	125.00	5,411.3	Lower Marker
2	44	26.42	911.3	
3	365	228.51	947.5	
4	398	65.78	250.4	
5	445	42.77	145.8	
6	492	27.09	83.4	
7	523	30.74	89.0	
8	540	23.69	66.5	
9	580	44.67	116.8	
10	643	56.44	133.0	
11	902	10.34	17.4	
12	972	8.49	13.2	
13	10,380	75.00	10.9	Upper Marker

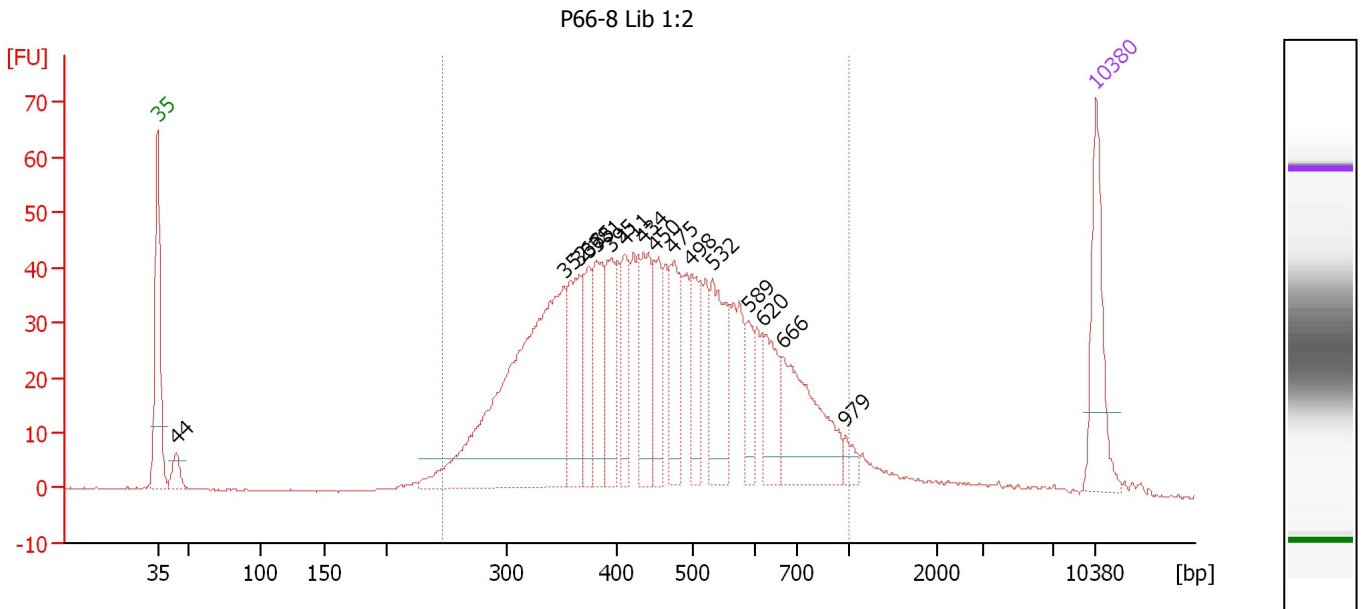
Region table for sample 8 : P66-6 Lib 1:2

From [bp]	To [bp]	Average Size [bp]	Molarity [pmol/l]	Conc. [pg/μl]	Corr. Area	% of Total	Size distribution in CV [%]	Color
266	1,000	489	3,481.1	999.27	676.7	88	30.8	Blue

Assay Class: High Sensitivity DNA Assay
 Data Path: C:\...ents and Settings\Bioanalyzer\2012-08-02\2012-08-02_002.xad

Created: 8/2/2012 2:10:10 PM
 Modified: 8/2/2012 2:52:27 PM

Electropherogram Summary Continued ...



Overall Results for sample 9 : P66-8 Lib 1:2

Number of peaks found: 16 Corr. Area 1: 1,104.6
 Noise: 0.1

Peak table for sample 9 : P66-8 Lib 1:2

Peak	Size [bp]	Conc. [pg/μl]	Molarity [pmol/l]	Observations
1	35	125.00	5,411.3	Lower Marker
2	44	23.27	801.2	
3	352	462.83	1,993.6	
4	366	102.10	423.1	
5	375	61.95	250.6	
6	381	81.81	324.9	
7	395	75.65	290.4	
8	411	60.98	225.0	
9	434	97.19	339.2	
10	450	58.24	195.9	
11	475	68.74	219.4	
12	498	59.99	182.4	
13	532	100.78	286.8	
14	589	35.20	90.5	
15	620	60.93	148.9	
16	666	132.22	301.0	
17	979	11.65	18.0	
18	10,380	75.00	10.9	Upper Marker

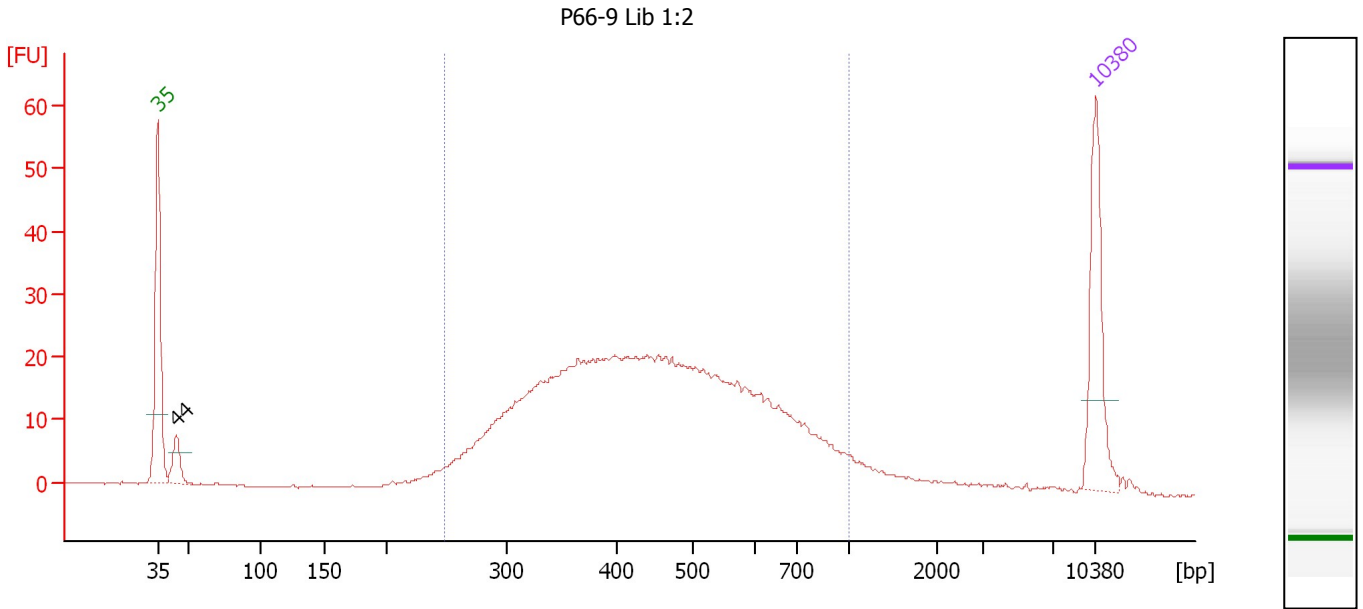
Region table for sample 9 : P66-8 Lib 1:2

From [bp]	To [bp]	Average Size [bp]	Molarity [pmol/l]	Conc. [pg/μl]	Corr. Area	% of Total	Size distribution in CV [%]	Color
247	1,000	470	6,991.4	1,932.50	1,104.6	94	30.5	Blue

Assay Class: High Sensitivity DNA Assay
 Data Path: C:\...ents and Settings\Bioanalyzer\2012-08-02\2012-08-02_002.xad

Created: 8/2/2012 2:10:10 PM
 Modified: 8/2/2012 2:52:27 PM

Electropherogram Summary Continued ...



Overall Results for sample 10 : P66-9 Lib 1:2

Number of peaks found: 1 Corr. Area 1: 570.1
 Noise: 0.1

Peak table for sample 10 : P66-9 Lib 1:2

Peak	Size [bp]	Conc. [pg/μl]	Molarity [pmol/l]	Observations
1	35	125.00	5,411.3	Lower Marker
2	44	32.53	1,118.7	
3	10,380	75.00	10.9	Upper Marker

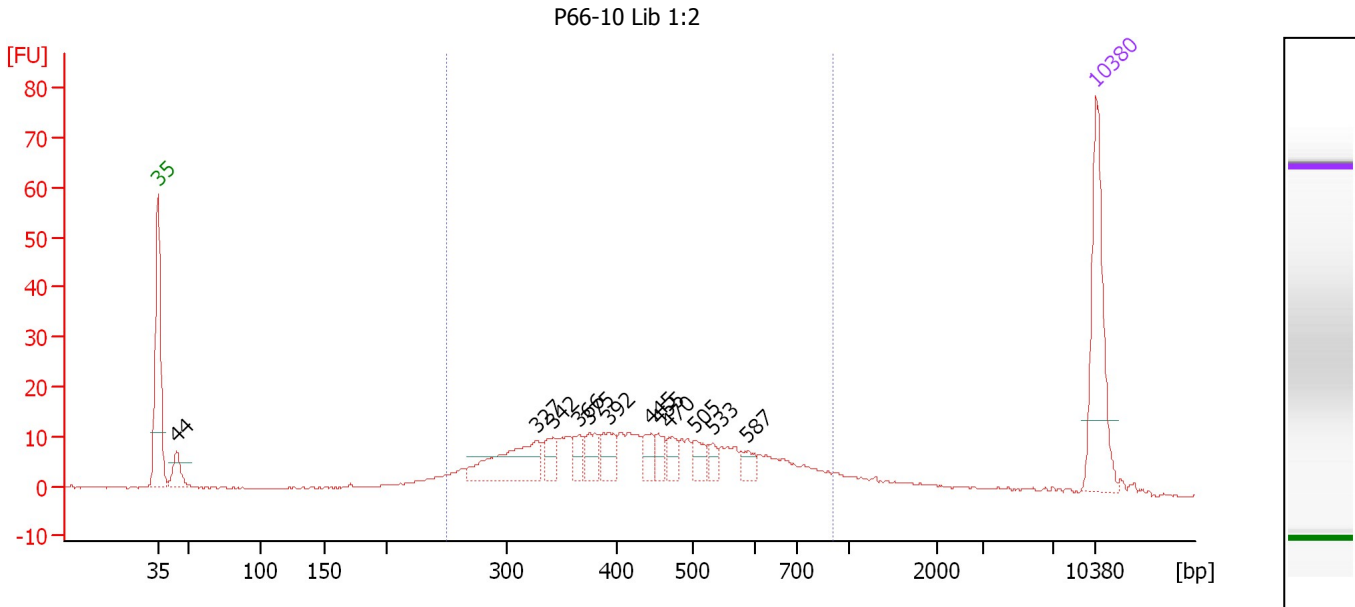
Region table for sample 10 : P66-9 Lib 1:2

From [bp]	To [bp]	Average Size [bp]	Molarity [pmol/l]	Conc. [pg/μl]	Corr. Area	% of Total	Size distribution in CV [%]	Color
248	1,000	469	3,984.8	1,090.47	570.1	91	31.5	Blue

Assay Class: High Sensitivity DNA Assay
 Data Path: C:\...ents and Settings\Bioanalyzer\2012-08-02\2012-08-02_002.xad

Created: 8/2/2012 2:10:10 PM
 Modified: 8/2/2012 2:52:27 PM

Electropherogram Summary Continued ...



Overall Results for sample 11 : P66-10 Lib 1:2

Number of peaks found: 12 Corr. Area 1: 322.8
 Noise: 0.1

Peak table for sample 11 : P66-10 Lib 1:2

Peak	Size [bp]	Conc. [pg/μl]	Molarity [pmol/l]	Observations
1	35	125.00	5,411.3	Lower Marker
2	44	25.72	882.4	
3	327	67.95	314.4	
4	342	18.19	80.5	
5	366	15.69	65.0	
6	375	19.92	80.5	
7	392	22.43	86.7	
8	445	15.51	52.8	
9	455	12.34	41.1	
10	470	12.47	40.2	
11	505	14.54	43.7	
12	533	8.41	23.9	
13	587	10.51	27.1	
14	10,380	75.00	10.9	Upper Marker

Region table for sample 11 : P66-10 Lib 1:2

From [bp]	To [bp]	Average Size [bp]	Molarity [pmol/l]	Conc. [pg/μl]	Corr. Area	% of Total	Size distribution in CV [%]	Color
249	909	452	1,886.3	500.19	322.8	78	30.2	Blue

Assay Class: High Sensitivity DNA Assay
Data Path: C:\...ents and Settings\Bioanalyzer\2012-08-02\2012-08-02_002.xad

Created: 8/2/2012 2:10:10 PM
Modified: 8/2/2012 2:52:27 PM

Gel Image

