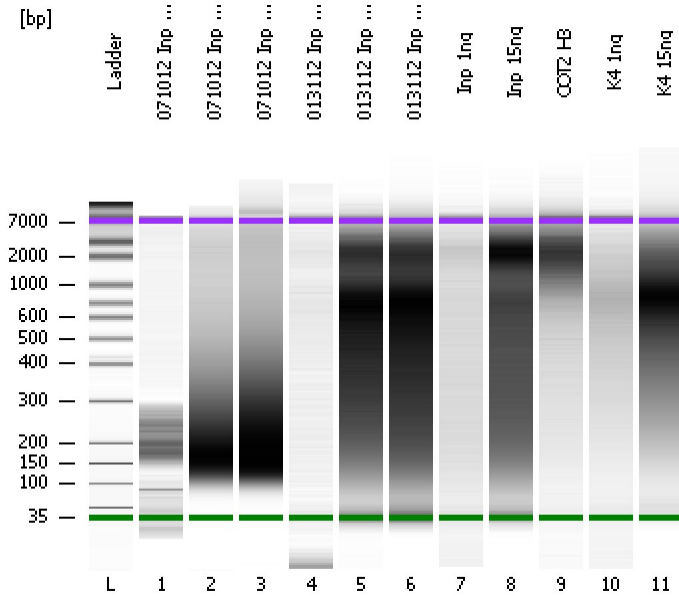


Assay Class: High Sensitivity DNA Assay
Data Path: C:\...ents and Settings\Bioanalyzer\2012-08-02\2012-08-02_003.xad

Created: 8/2/2012 3:17:38 PM
Modified: 8/2/2012 4:02:22 PM

Electrophoresis File Run Summary



Instrument Information:

Instrument Name: DE13701086 Firmware: C.01.069
Serial#: DE13701086 Type: G2938B

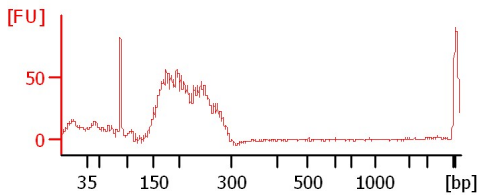
Assay Information:

Assay Origin Path: C:\Program Files\Agilent\2100 bioanalyzer\2100 expert\assays\dsDNA\High Sensitivity DNA.xsy
Assay Class: High Sensitivity DNA Assay
Version: 1.03
Assay Comments: Copyright © 2003-2010 Agilent Technologies

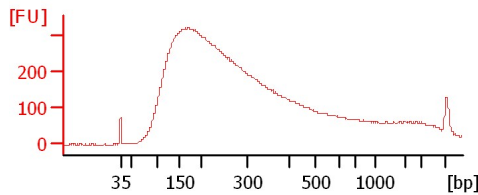
Chip Information:

Chip Lot #:
Reagent Kit Lot #:
Chip Comments:

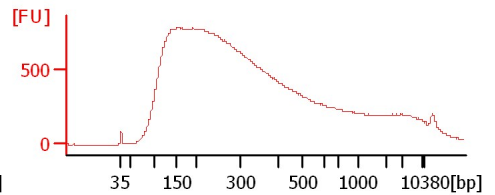
071012 Inp 1ng



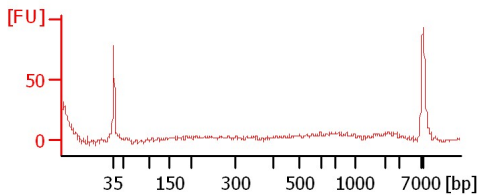
071012 Inp 15ng



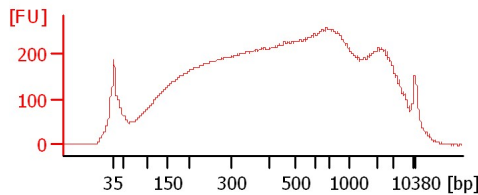
071012 Inp 40ng



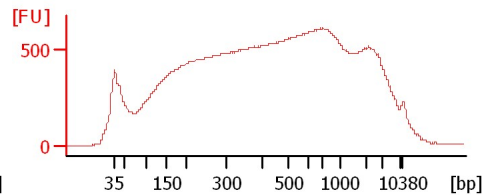
013112 Inp 1ng



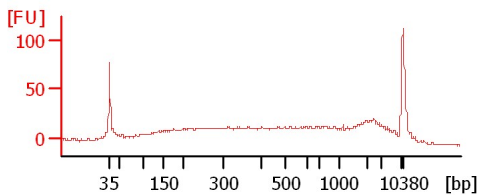
013112 Inp 15ng



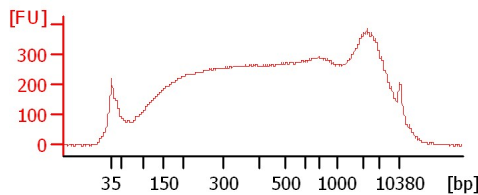
013112 Inp 40ng



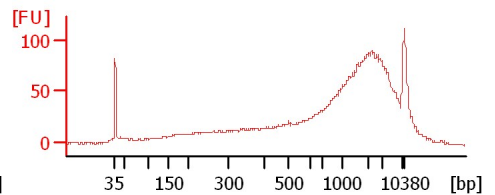
Inp 1ng



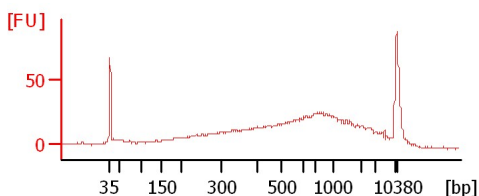
Inp 15ng



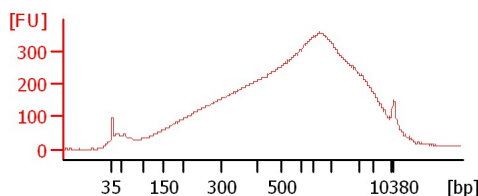
COT2 H3



K4 1ng



K4 15ng



Assay Class: High Sensitivity DNA Assay
Data Path: C:\...ents and Settings\Bioanalyzer\2012-08-02\2012-08-02_003.xad

Created: 8/2/2012 3:17:38 PM
Modified: 8/2/2012 4:02:22 PM

Electrophoresis File Run Summary (Chip Summary)

Sample Name	Sample Comment	Rest. Digest	Status	Observation	Result Label	Result Color
071012 Inp 1ng		<input type="checkbox"/>	✓			
071012 Inp 15ng		<input type="checkbox"/>	✓			
071012 Inp 40ng		<input type="checkbox"/>	✓			
013112 Inp 1ng		<input type="checkbox"/>	✓			
013112 Inp 15ng		<input type="checkbox"/>	✓			
013112 Inp 40ng		<input type="checkbox"/>	✓			
Inp 1ng		<input type="checkbox"/>	✓			
Inp 15ng		<input type="checkbox"/>	✓			
COT2 H3		<input type="checkbox"/>	✓			
K4 1ng		<input type="checkbox"/>	✓			
K4 15ng		<input type="checkbox"/>	✓			
Ladder		<input type="checkbox"/>	✓			

Chip Lot #

Reagent Kit Lot #

Chip Comments :

Assay Class: High Sensitivity DNA Assay
Data Path: C:\...ents and Settings\Bioanalyzer\2012-08-02\2012-08-02_003.xad

Created: 8/2/2012 3:17:38 PM
Modified: 8/2/2012 4:02:22 PM

Electrophoresis Assay Details

General Analysis Settings

Number of Available Sample and Ladder Wells (Max.) : 12
Minimum Visible Range [s] : 32
Maximum Visible Range [s] : 138
Start Analysis Time Range [s] : 33
End Analysis Time Range [s] : 137.5
Ladder Concentration [pg/μl] : 1950
Uses Standard Area for Ladder Fragments
Lower Marker Concentration [pg/μl] : 125
Upper Marker Concentration [pg/μl] : 75
Used Upper Marker for Quantitation
Standard Curve Fit is Point to Point
Show Data Aligned to Lower and Upper Marker

Integrator Settings

Integration Start Time [s] : 33.05
Integration End Time [s] : 137
Slope Threshold : 0.8
Height Threshold [FU] : 5
Area Threshold : 0.1
Width Threshold [s] : 0.6
Baseline Plateau [s] : 0.5

Filter Settings

Filter Width [s] : 0.5
Polynomial Order : 4

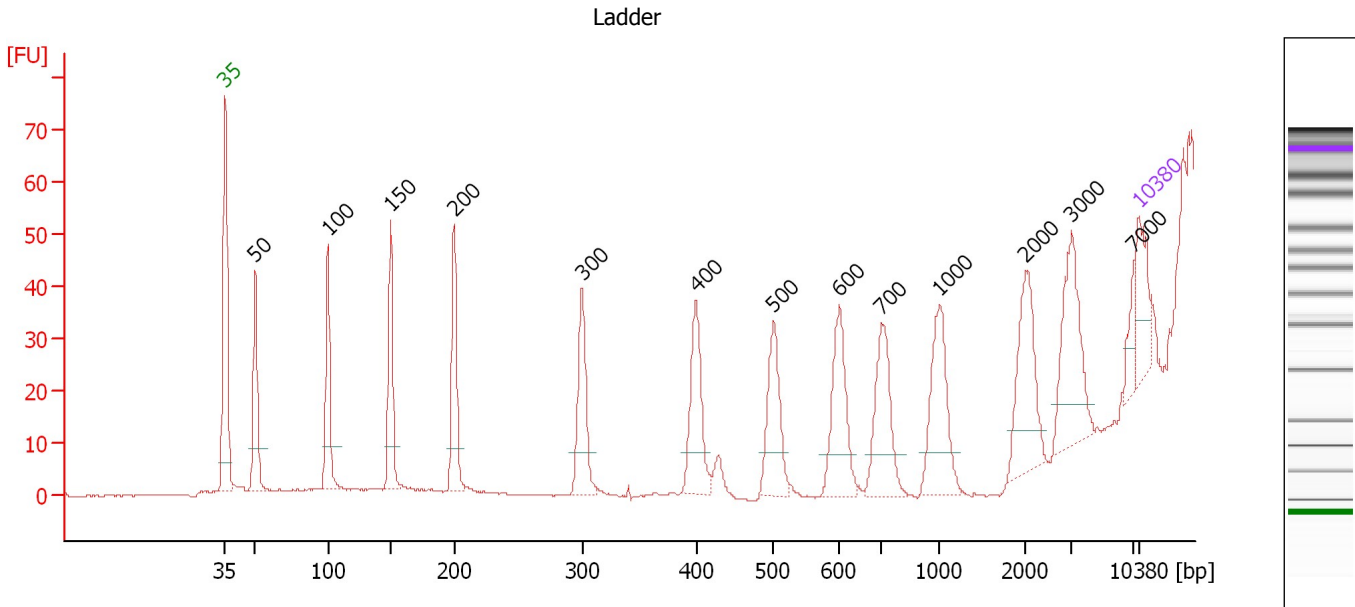
Ladder

Ladder Peak	Size	Area
1	35	160
2	50	210
3	100	208
4	150	221
5	200	242
6	300	270
7	400	305
8	500	306
9	600	336
10	700	321
11	1000	366
12	2000	413
13	3000	411
14	7000	400
15	10380	214

Assay Class: High Sensitivity DNA Assay
 Data Path: C:\...ents and Settings\Bioanalyzer\2012-08-02\2012-08-02_003.xad

Created: 8/2/2012 3:17:38 PM
 Modified: 8/2/2012 4:02:22 PM

Electropherogram Summary



Overall Results for Ladder

Noise: 0.1

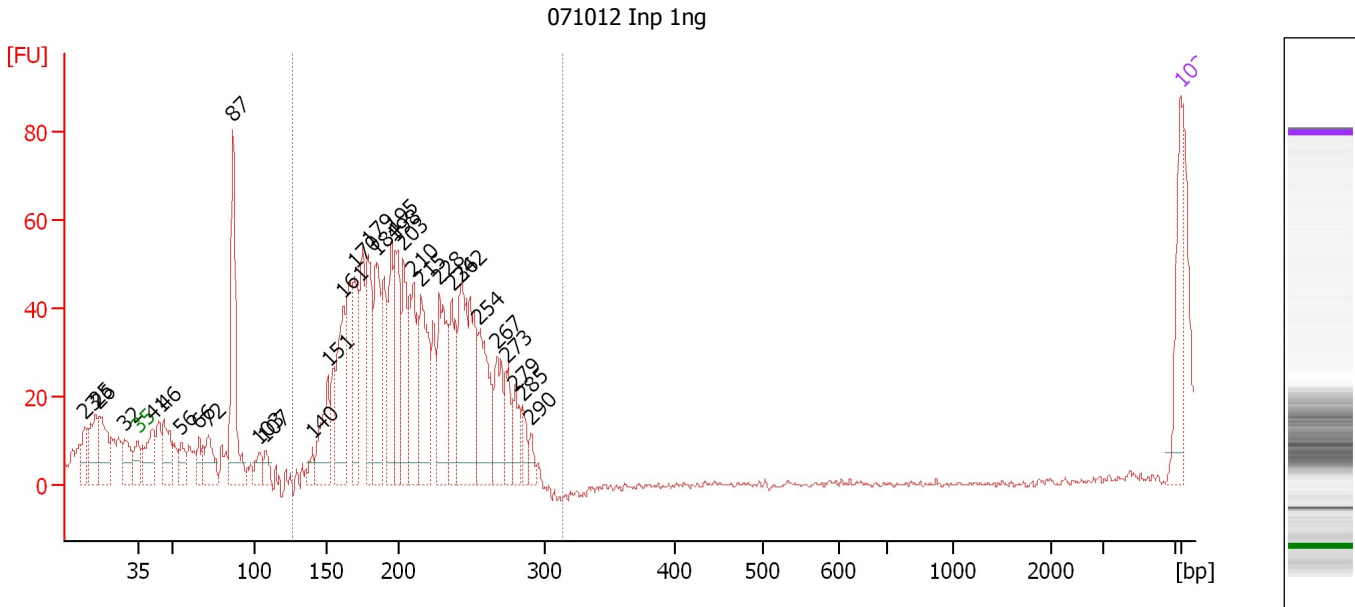
Peak table for Ladder

Peak	Size [bp]	Conc. [pg/μl]	Molarity [pmol/l]	Observations
1	35	125.00	5,411.3	Lower Marker
2	50	150.00	4,545.5	Ladder Peak
3	100	150.00	2,272.7	Ladder Peak
4	150	150.00	1,515.2	Ladder Peak
5	200	150.00	1,136.4	Ladder Peak
6	300	150.00	757.6	Ladder Peak
7	400	150.00	568.2	Ladder Peak
8	500	150.00	454.5	Ladder Peak
9	600	150.00	378.8	Ladder Peak
10	700	150.00	324.7	Ladder Peak
11	1,000	150.00	227.3	Ladder Peak
12	2,000	150.00	113.6	Ladder Peak
13	3,000	150.00	75.8	Ladder Peak
14	7,000	150.00	32.5	Ladder Peak
15	10,380	75.00	10.9	Upper Marker

Assay Class: High Sensitivity DNA Assay
 Data Path: C:\...ents and Settings\Bioanalyzer\2012-08-02\2012-08-02_003.xad

Created: 8/2/2012 3:17:38 PM
 Modified: 8/2/2012 4:02:22 PM

Electropherogram Summary Continued ...



Overall Results for sample 1 : 071012 Inp 1ng

Number of peaks found: 32 Corr. Area 1: 442.2
 Noise: 0.6

Peak table for sample 1 : 071012 Inp 1ng


Peak	Size [bp]	Conc. [pg/μl]	Molarity [pmol/l]	Observations
1	23	0.00	0.0	
2	25	0.00	0.0	
3	26	0.00	0.0	
4	32	0.00	0.0	
5	35	125.00	5,411.3	Lower Marker
6	41	117.46	4,305.4	
7	46	108.87	3,565.3	
8	56	47.66	1,301.0	
9	66	47.85	1,090.9	
10	72	85.76	1,806.5	
11	87	314.74	5,497.0	
12	103	35.47	522.2	
13	107	30.85	435.3	
14	140	27.37	296.1	
15	151	127.45	1,280.5	
16	161	190.55	1,787.8	
17	170	156.91	1,401.9	
18	179	161.33	1,367.1	
19	184	188.88	1,555.8	
20	195	154.20	1,198.2	
21	198	151.41	1,161.2	
22	203	155.13	1,157.5	
23	210	150.87	1,090.4	
24	215	199.19	1,403.0	
25	228	187.02	1,245.4	
26	236	112.47	721.2	

Assay Class: High Sensitivity DNA Assay
 Data Path: C:\...ents and Settings\Bioanalyzer\2012-08-02\2012-08-02_003.xad


Created: 8/2/2012 3:17:38 PM
 Modified: 8/2/2012 4:02:22 PM

Electropherogram Summary Continued ...

... Peak table for sample 1 : 071012 Inp 1ng

Peak	Size [bp]	Conc. [pg/μl]	Molarity [pmol/l]	Observations
27	242	326.74	2,041.5	
28	254	169.59	1,010.9	
29	267	107.43	610.6	
30	273	62.10	344.5	
31	279	53.24	289.1	
32	285	33.55	178.3	
33	290	23.00	120.2	
34	 10,380	75.00	10.9	Upper Marker

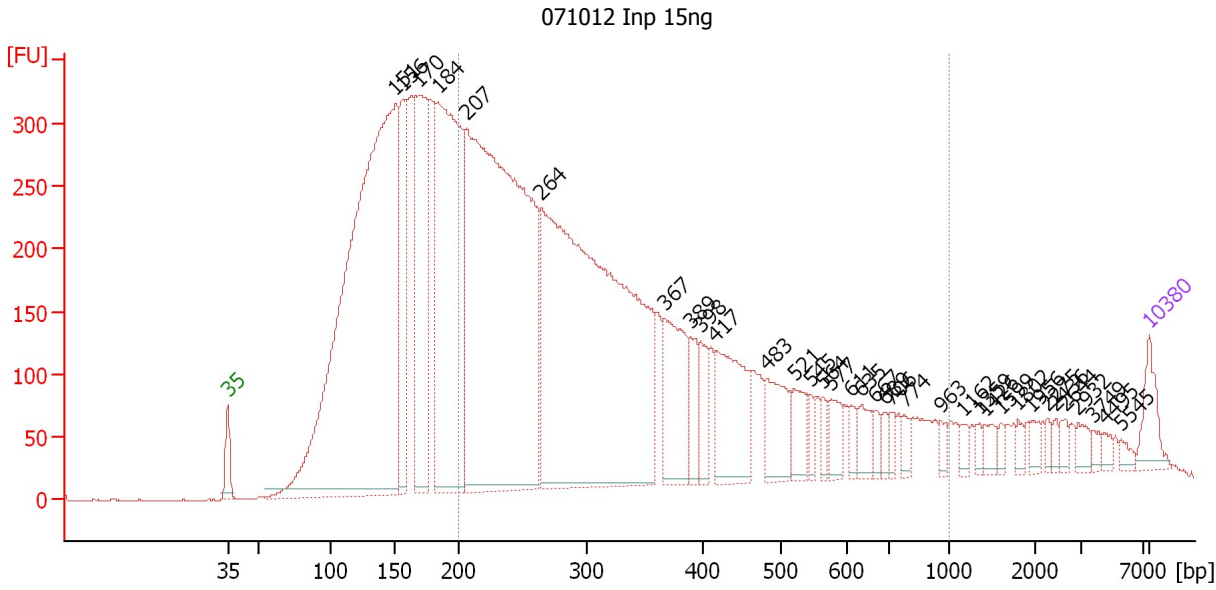
Region table for sample 1 : 071012 Inp 1ng

From [bp]	To [bp]	Average Size [bp]	Molarity [pmol/l]	Conc. [pg/μl]	Corr. Area	% of Total	Size distribution in CV [%]	Color
127	314	201	10,291.3	1,330.52	442.2	79	14.1	

Assay Class: High Sensitivity DNA Assay
 Data Path: C:\...ents and Settings\Bioanalyzer\2012-08-02\2012-08-02_003.xad

Created: 8/2/2012 3:17:38 PM
 Modified: 8/2/2012 4:02:22 PM

Electropherogram Summary Continued ...



Overall Results for sample 2 : 071012 Inp 15ng

Number of peaks found: 35 Corr. Area 1: 7,347.1
 Noise: 0.4

Peak table for sample 2 : 071012 Inp 15ng


Peak	Size [bp]	Conc. [pg/μl]	Molarity [pmol/l]	Observations
1	35	125.00	5,411.3	Lower Marker
2	151	3,505.55	35,186.2	
3	156	439.82	4,261.8	
4	170	755.83	6,748.5	
5	184	1,475.50	12,159.4	
6	207	3,031.51	22,220.6	
7	264	2,782.09	15,959.6	
8	367	335.24	1,384.9	
9	389	121.70	474.0	
10	398	102.74	390.8	
11	417	327.02	1,189.4	
12	483	189.17	593.5	
13	521	97.98	285.0	
14	545	38.80	107.8	
15	564	36.07	97.0	
16	577	75.76	199.1	
17	611	35.24	87.4	
18	635	65.88	157.3	
19	667	34.81	79.1	
20	689	29.58	65.0	
21	706	27.30	58.6	
22	774	30.26	59.2	
23	963	26.94	42.4	
24	1,162	24.13	31.5	
25	1,359	16.84	18.8	
26	1,426	32.37	34.4	

Assay Class: High Sensitivity DNA Assay
 Data Path: C:\...ents and Settings\Bioanalyzer\2012-08-02\2012-08-02_003.xad

Created: 8/2/2012 3:17:38 PM
 Modified: 8/2/2012 4:02:22 PM

Electropherogram Summary Continued ...

... Peak table for sample 2 : 071012 Inp 15ng

Peak	Size [bp]	Conc. [pg/μl]	Molarity [pmol/l]	Observations
27	1,599	16.86	16.0	
28	1,802	20.09	16.9	
29	1,956	24.63	19.1	
30	2,275	15.19	10.1	
31	2,436	14.72	9.2	
32	2,644	21.19	12.1	
33	2,932	29.63	15.3	
34	3,749	15.47	6.3	
35	4,495	16.55	5.6	
36	5,545	16.83	4.6	
37	 10,380	75.00	10.9	Upper Marker

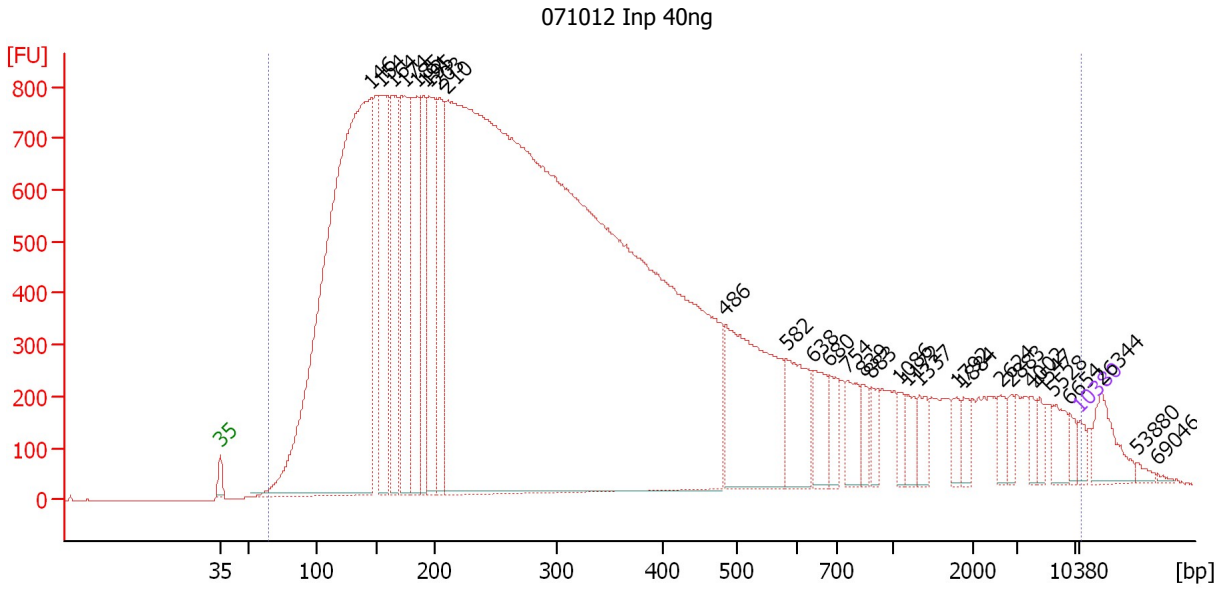
Region table for sample 2 : 071012 Inp 15ng

From [bp]	To [bp]	Average Size [bp]	Molarity [pmol/l]	Conc. [pg/μl]	Corr. Area	% of Total	Size distribution in CV [%]	Color
200	1,000	357	39,364.4	7,698.28	7,347.1	55	43.5	

Assay Class: High Sensitivity DNA Assay
 Data Path: C:\...ents and Settings\Bioanalyzer\2012-08-02\2012-08-02_003.xad

Created: 8/2/2012 3:17:38 PM
 Modified: 8/2/2012 4:02:22 PM

Electropherogram Summary Continued ...



Overall Results for sample 3 : 071012 Inp 40ng

Number of peaks found: 30 Corr. Area 1: 39,507.5
 Noise: 0.7

Peak table for sample 3 : 071012 Inp 40ng

Peak	Size [bp]	Conc. [pg/μl]	Molarity [pmol/l]	Observations
1	35	125.00	5,411.3	Lower Marker
2	146	10,177.56	105,567.5	
3	154	1,980.98	19,472.1	
4	164	1,719.04	15,928.5	
5	174	1,929.68	16,823.6	
6	185	1,589.66	13,022.8	
7	191	1,126.09	8,944.4	
8	195	1,363.96	10,610.3	
9	203	1,238.59	9,234.1	
10	210	30,530.77	220,414.6	
11	486	1,954.60	6,096.3	
12	582	613.89	1,598.9	
13	638	350.14	831.1	
14	680	235.99	526.2	
15	754	308.38	619.4	
16	839	142.45	257.2	
17	883	161.59	277.3	
18	1,086	109.33	152.6	
19	1,172	156.05	201.8	
20	1,337	156.88	177.8	
21	1,792	115.22	97.4	
22	1,884	106.24	85.4	
23	2,624	116.37	67.2	
24	2,883	85.85	45.1	
25	4,002	88.70	33.6	
26	4,547	101.78	33.9	

Assay Class: High Sensitivity DNA Assay
 Data Path: C:\...ents and Settings\Bioanalyzer\2012-08-02\2012-08-02_003.xad

Created: 8/2/2012 3:17:38 PM
 Modified: 8/2/2012 4:02:22 PM

Electropherogram Summary Continued ...

... Peak table for sample 3 : 071012 Inp 40ng

Peak	Size [bp]	Conc. [pg/μl]	Molarity [pmol/l]	Observations
27	5,528	158.34	43.4	
28	6,654	71.94	16.4	
29	10,380	75.00	10.9	Upper Marker
30	26,344	0.00	0.0	
31	53,880	0.00	0.0	
32	69,046	0.00	0.0	

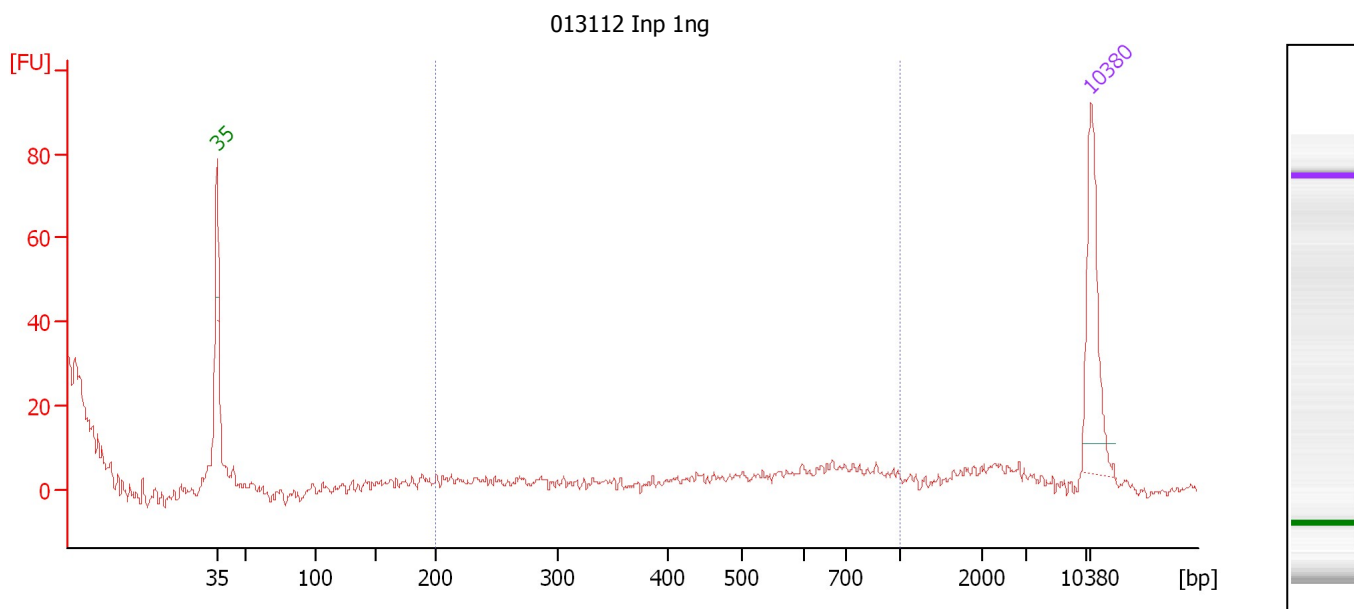
Region table for sample 3 : 071012 Inp 40ng

From [bp]	To [bp]	Average Size [bp]	Molarity [pmol/l]	Conc. [pg/μl]	Corr. Area	% of Total	Size distribution in CV [%]	Color
65	11,688	557	383,143.6	53,587.99	39,507.5	99	100.0	

Assay Class: High Sensitivity DNA Assay
 Data Path: C:\...ents and Settings\Bioanalyzer\2012-08-02\2012-08-02_003.xad

Created: 8/2/2012 3:17:38 PM
 Modified: 8/2/2012 4:02:22 PM

Electropherogram Summary Continued ...



Setpoint Deviations for sample 4 : 013112 Inp 1ng

Slope Threshold : 0.1 Width Threshold [s] : 0.1
 Height Threshold [FU] : 1

Overall Results for sample 4 : 013112 Inp 1ng

Number of peaks found: 0 Corr. Area 1: 0.0
 Noise: 1.4

Peak table for sample 4 : 013112 Inp 1ng

Peak	Size [bp]	Conc. [pg/µl]	Molarity [pmol/l]	Observations
1	35	125.00	5,411.3	Lower Marker
2	10,380	75.00	10.9	Upper Marker

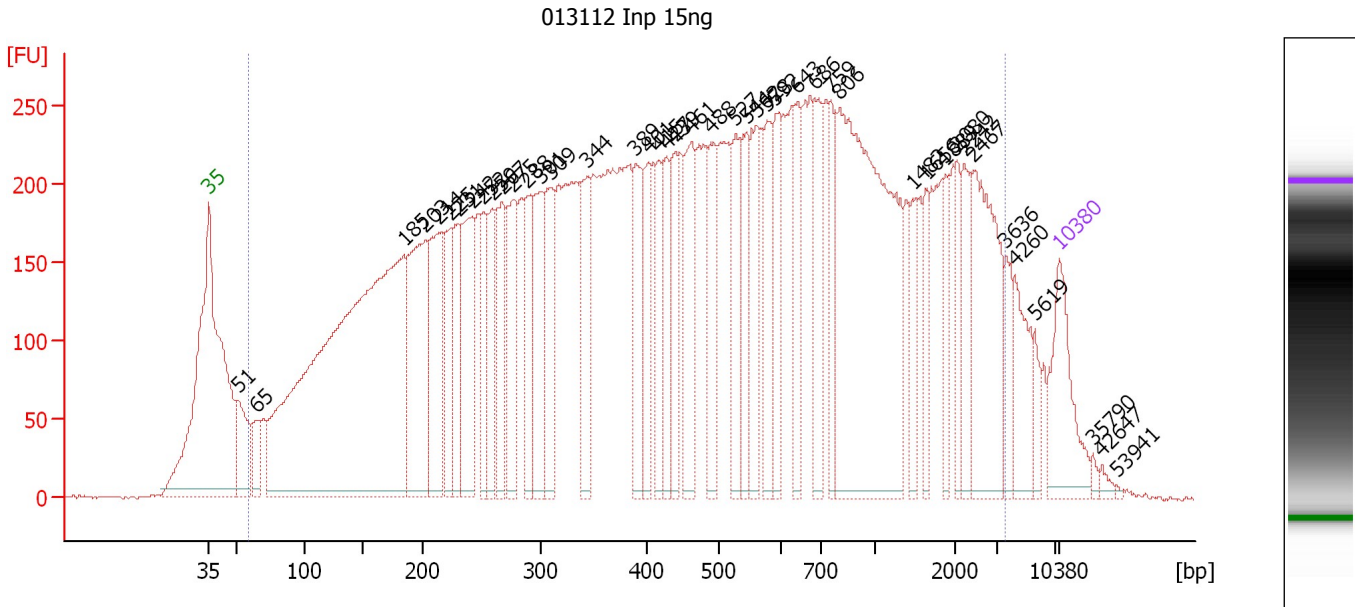
Region table for sample 4 : 013112 Inp 1ng

From [bp]	To [bp]	Average Size [bp]	Molarity [pmol/l]	Conc. [pg/µl]	Corr. Area	% of Total	Size distribution in CV [%]	Color
200	1,000	0	0.0	0.00	0.0	0	0.0	■

Assay Class: High Sensitivity DNA Assay
 Data Path: C:\...ents and Settings\Bioanalyzer\2012-08-02\2012-08-02_003.xad

Created: 8/2/2012 3:17:38 PM
 Modified: 8/2/2012 4:02:22 PM

Electropherogram Summary Continued ...



Overall Results for sample 5 : 013112 Inp 15ng

Number of peaks found: 44 Corr. Area 1: 15,417.7
 Noise: 1.1

Peak table for sample 5 : 013112 Inp 15ng


Peak	Size [bp]	Conc. [pg/μl]	Molarity [pmol/l]	Observations
1	35	125.00	5,411.3	Lower Marker
2	51	89.19	2,643.0	
3	65	48.19	1,124.1	
4	185	1,116.12	9,145.6	
5	203	251.00	1,874.1	
6	214	167.88	1,187.9	
7	225	86.30	581.5	
8	231	104.94	689.3	
9	242	152.89	957.8	
10	252	79.19	476.7	
11	259	90.30	527.6	
12	267	107.79	610.8	
13	275	130.51	718.0	
14	288	99.78	525.0	
15	301	114.97	579.6	
16	309	119.52	585.9	
17	344	108.05	476.3	
18	389	95.78	373.2	
19	401	73.92	279.1	
20	415	64.00	233.8	
21	427	73.63	261.5	
22	439	73.97	255.2	
23	461	113.42	372.5	
24	488	87.85	272.7	
25	527	80.15	230.5	
26	544	83.19	231.6	

Assay Class: High Sensitivity DNA Assay
 Data Path: C:\...ents and Settings\Bioanalyzer\2012-08-02\2012-08-02_003.xad


Created: 8/2/2012 3:17:38 PM
 Modified: 8/2/2012 4:02:22 PM

Electropherogram Summary Continued ...

... Peak table for sample 5 : 013112 Inp 15ng

Peak	Size [bp]	Conc. [pg/µl]	Molarity [pmol/l]	Observations
27	562	87.01	234.6	
28	578	77.43	203.1	
29	592	72.61	185.7	
30	643	64.98	153.0	
31	686	84.84	187.3	
32	759	58.31	116.5	
33	806	480.02	902.6	
34	1,482	37.64	38.5	
35	1,656	37.33	34.2	
36	1,889	35.10	28.2	
37	2,080	35.40	25.8	
38	2,242	50.93	34.4	
39	2,467	144.47	88.7	
40	3,636	33.23	13.8	
41	4,260	54.79	19.5	
42	5,619	16.22	4.4	
43	 10,380	75.00	10.9	Upper Marker
44	35,790	0.00	0.0	
45	42,647	0.00	0.0	
46	53,941	0.00	0.0	

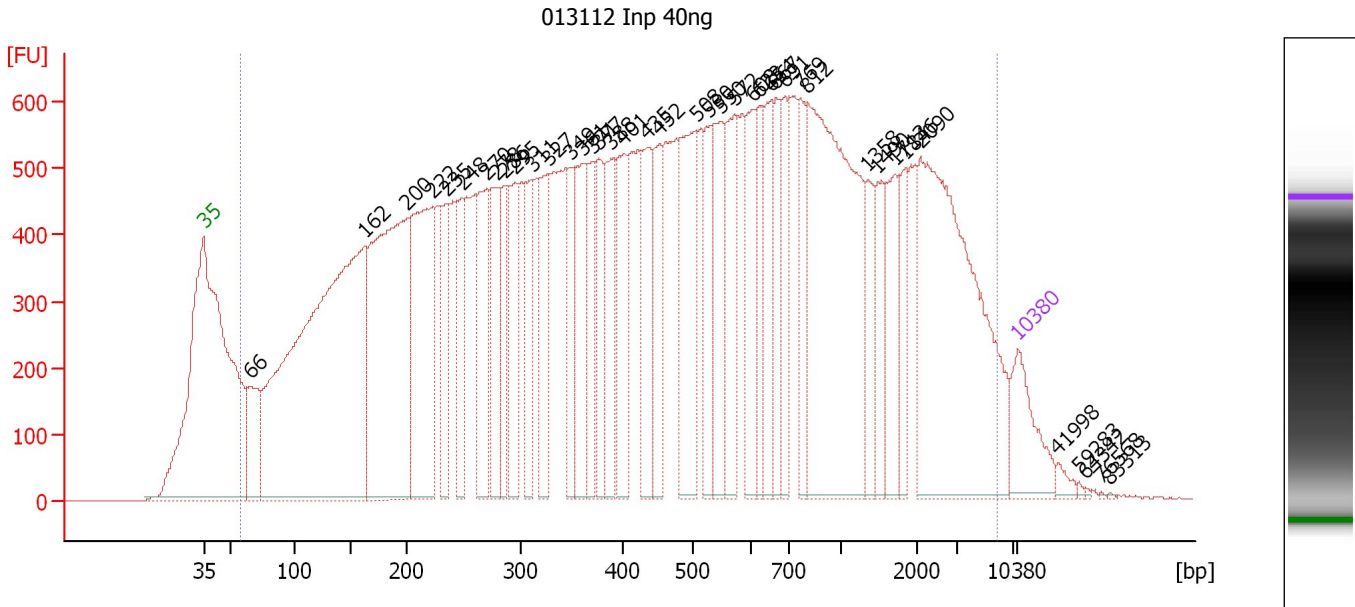
Region table for sample 5 : 013112 Inp 15ng

From [bp]	To [bp]	Average Size [bp]	Molarity [pmol/l]	Conc. [pg/µl]	Corr. Area	% of Total	Size distribution in CV [%]	Color
59	3,602	696	37,440.9	6,598.69	15,417.7	96	96.3	

Assay Class: High Sensitivity DNA Assay
 Data Path: C:\...ents and Settings\Bioanalyzer\2012-08-02\2012-08-02_003.xad

Created: 8/2/2012 3:17:38 PM
 Modified: 8/2/2012 4:02:22 PM

Electropherogram Summary Continued ...



Overall Results for sample 6 : 013112 Inp 40ng

Number of peaks found: 41 Corr. Area 1: 38,858.9
 Noise: 1.0

Peak table for sample 6 : 013112 Inp 40ng


Peak	Size [bp]	Conc. [pg/μl]	Molarity [pmol/l]	Observations
1	35	125.00	5,411.3	Lower Marker
2	66	143.16	3,300.0	
3	162	1,385.14	12,939.9	
4	200	707.68	5,363.3	
5	222	428.07	2,916.7	
6	235	132.18	853.9	
7	248	129.80	792.7	
8	270	192.84	1,081.8	
9	278	141.51	772.5	
10	286	106.56	565.5	
11	295	137.02	704.0	
12	311	109.68	535.2	
13	327	144.92	670.9	
14	349	96.54	419.4	
15	361	166.76	699.1	
16	371	100.19	409.3	
17	377	113.44	456.4	
18	388	131.26	512.4	
19	401	149.82	566.0	
20	435	141.96	494.3	
21	452	120.93	405.2	
22	508	231.39	690.8	
23	530	110.67	316.2	
24	550	140.43	386.6	
25	572	156.12	413.3	
26	608	122.24	304.7	

Assay Class: High Sensitivity DNA Assay
 Data Path: C:\...ents and Settings\Bioanalyzer\2012-08-02\2012-08-02_003.xad


Created: 8/2/2012 3:17:38 PM
 Modified: 8/2/2012 4:02:22 PM

Electropherogram Summary Continued ...

... Peak table for sample 6 : 013112 Inp 40ng

Peak	Size [bp]	Conc. [pg/µl]	Molarity [pmol/l]	Observations
27	623	86.76	210.9	
28	654	112.93	261.5	
29	667	101.25	230.0	
30	691	82.89	181.8	
31	769	91.08	179.4	
32	812	582.65	1,086.7	
33	1,358	74.69	83.4	
34	1,490	76.53	77.8	
35	1,713	89.48	79.1	
36	1,846	59.50	48.8	
37	2,090	473.72	343.5	
38	 10,380	75.00	10.9	Upper Marker
39	41,998	0.00	0.0	
40	59,283	0.00	0.0	
41	64,342	0.00	0.0	
42	76,568	0.00	0.0	
43	83,313	0.00	0.0	

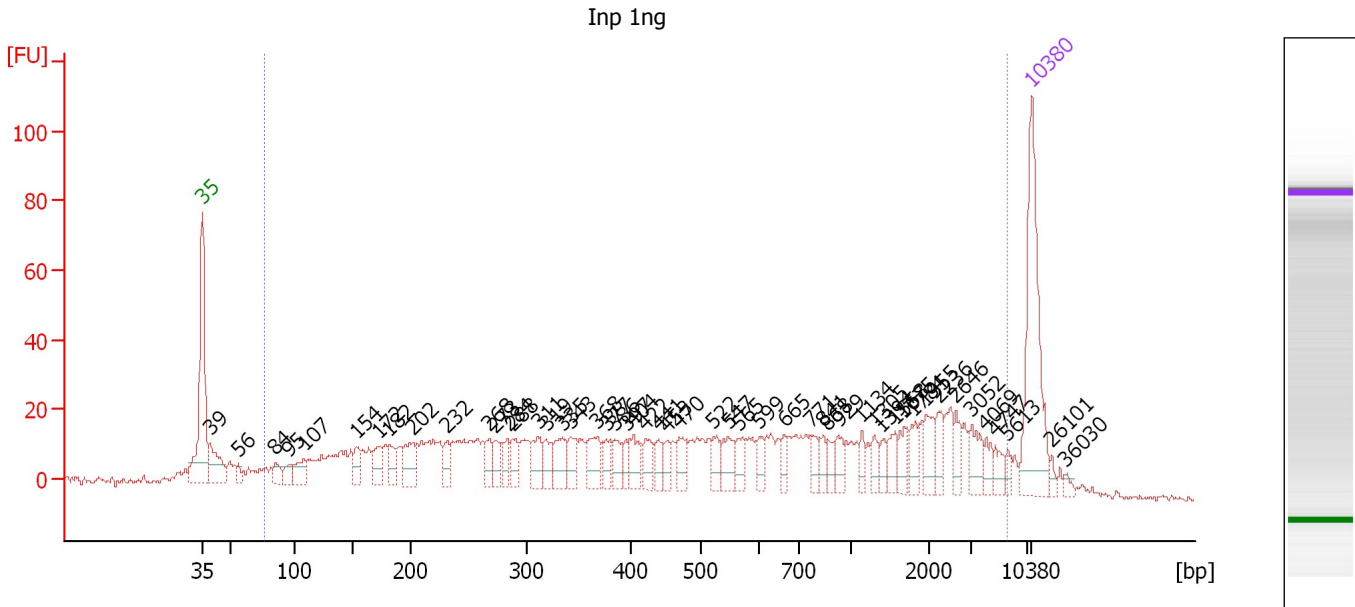
Region table for sample 6 : 013112 Inp 40ng

From [bp]	To [bp]	Average Size [bp]	Molarity [pmol/l]	Conc. [pg/µl]	Corr. Area	% of Total	Size distribution in CV [%]	Color
57	5,922	792	54,433.7	9,252.11	38,858.9	99	100.0	

Assay Class: High Sensitivity DNA Assay
 Data Path: C:\...ents and Settings\Bioanalyzer\2012-08-02\2012-08-02_003.xad

Created: 8/2/2012 3:17:38 PM
 Modified: 8/2/2012 4:02:22 PM

Electropherogram Summary Continued ...



Overall Results for sample 7 : Inp 1ng

Number of peaks found: 51 Corr. Area 1: 1,094.4
 Noise: 0.9

Peak table for sample 7 : Inp 1ng


Peak	Size [bp]	Conc. [pg/µl]	Molarity [pmol/l]	Observations
1	35	125.00	5,411.3	Lower Marker
2	39	39.31	1,522.2	
3	56	7.34	198.1	
4	84	11.44	205.2	
5	95	10.70	170.6	
6	107	19.62	277.0	
7	154	15.85	156.0	
8	172	18.64	163.8	
9	182	14.64	122.1	
10	202	27.89	209.1	
11	232	13.03	85.1	
12	268	13.60	76.8	
13	273	12.21	67.7	
14	284	12.03	64.1	
15	288	15.13	79.6	
16	311	19.78	96.3	
17	319	14.53	69.0	
18	335	22.99	103.9	
19	343	15.62	69.1	
20	368	23.53	96.8	
21	377	11.65	46.8	
22	386	12.68	49.8	
23	397	10.27	39.2	
24	404	16.32	61.2	
25	422	13.67	49.1	
26	441	10.53	36.2	

Assay Class: High Sensitivity DNA Assay
 Data Path: C:\...ents and Settings\Bioanalyzer\2012-08-02\2012-08-02_003.xad


Created: 8/2/2012 3:17:38 PM
 Modified: 8/2/2012 4:02:22 PM

Electropherogram Summary Continued ...

... Peak table for sample 7 : Inp 1ng

Peak	Size [bp]	Conc. [pg/μl]	Molarity [pmol/l]	Observations
27	453	10.54	35.3	
28	470	14.63	47.1	
29	522	12.64	36.7	
30	547	17.91	49.6	
31	565	12.58	33.7	
32	599	9.63	24.4	
33	665	8.71	19.8	
34	771	11.59	22.8	
35	841	7.83	14.1	
36	868	7.85	13.7	
37	929	11.86	19.3	
38	1,134	6.87	9.2	
39	1,305	8.60	10.0	
40	1,394	6.30	6.8	
41	1,558	10.96	10.7	
42	1,675	10.64	9.6	
43	1,784	10.67	9.1	
44	1,955	15.54	12.0	
45	2,236	10.72	7.3	
46	2,646	9.22	5.3	
47	3,052	13.91	6.9	
48	4,069	7.24	2.7	
49	4,747	7.36	2.3	
50	5,613	4.69	1.3	
51	 10,380	75.00	10.9	Upper Marker
52	26,101	0.00	0.0	
53	36,030	0.00	0.0	

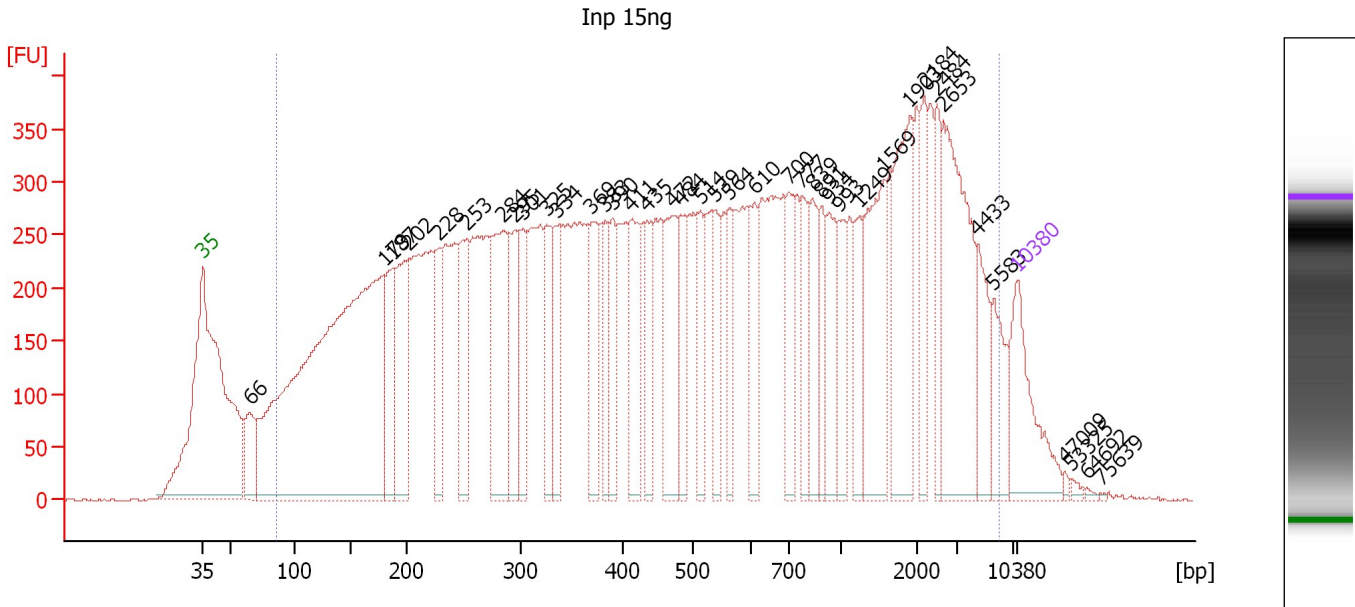
Region table for sample 7 : Inp 1ng

From [bp]	To [bp]	Average Size [bp]	Molarity [pmol/l]	Conc. [pg/μl]	Corr. Area	% of Total	Size distribution in CV [%]	Color
77	5,536	941	5,331.8	1,021.63	1,094.4	92	100.0	

Assay Class: High Sensitivity DNA Assay
Data Path: C:\...ents and Settings\Bioanalyzer\2012-08-02\2012-08-02_003.xad

Created: 8/2/2012 3:17:38 PM
Modified: 8/2/2012 4:02:22 PM

Electropherogram Summary Continued ...



Overall Results for sample 8 : Inp 15ng

Number of peaks found: 40 Corr. Area 1: 20,198.7
Noise: 0.7

Peak table for sample 8 : Inp 15ng


Peak	Size [bp]	Conc. [pg/μl]	Molarity [pmol/l]	Observations
1	35	125.00	5,411.3	Lower Marker
2	66	70.38	1,623.6	
3	179	942.85	7,961.7	
4	187	112.71	913.4	
5	202	144.26	1,084.4	
6	228	82.02	545.7	
7	253	115.88	694.2	
8	284	170.23	908.9	
9	295	88.43	454.2	
10	301	67.97	341.9	
11	325	74.15	345.4	
12	334	63.68	288.7	
13	369	80.23	329.2	
14	383	53.21	210.6	
15	390	52.52	203.9	
16	411	90.03	331.8	
17	435	65.25	227.2	
18	472	102.16	327.8	
19	484	60.40	189.2	
20	514	51.58	152.1	
21	539	46.14	129.7	
22	564	48.30	129.8	
23	610	53.19	132.1	
24	700	55.76	120.7	
25	777	55.50	108.2	
26	839	55.82	100.8	

Assay Class: High Sensitivity DNA Assay
 Data Path: C:\...ents and Settings\Bioanalyzer\2012-08-02\2012-08-02_003.xad


Created: 8/2/2012 3:17:38 PM
 Modified: 8/2/2012 4:02:22 PM

Electropherogram Summary Continued ...

... Peak table for sample 8 : Inp 15ng

Peak	Size [bp]	Conc. [pg/μl]	Molarity [pmol/l]	Observations
27	891	38.11	64.8	
28	934	61.64	100.0	
29	993	45.50	69.4	
30	1,249	43.40	52.7	
31	1,569	117.88	113.8	
32	1,903	115.71	92.1	
33	2,184	46.67	32.4	
34	2,484	42.06	25.7	
35	2,653	163.05	93.1	
36	4,433	48.62	16.6	
37	5,583	42.85	11.6	
38	 10,380	75.00	10.9	Upper Marker
39	47,009	0.00	0.0	
40	53,325	0.00	0.0	
41	64,692	0.00	0.0	
42	75,639	0.00	0.0	

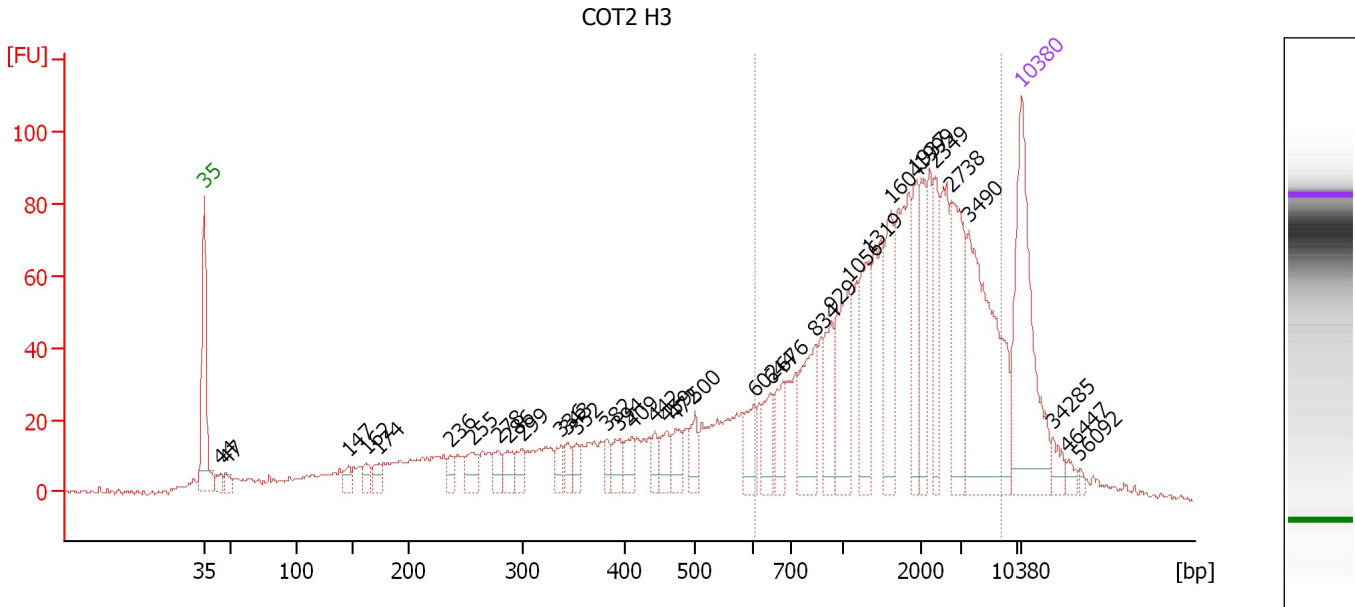
Region table for sample 8 : Inp 15ng

From [bp]	To [bp]	Average Size [bp]	Molarity [pmol/l]	Conc. [pg/μl]	Corr. Area	% of Total	Size distribution in CV [%]	Color
86	5,895	919	28,068.6	5,373.44	20,198.7	97	100.0	

Assay Class: High Sensitivity DNA Assay
 Data Path: C:\...ents and Settings\Bioanalyzer\2012-08-02\2012-08-02_003.xad

Created: 8/2/2012 3:17:38 PM
 Modified: 8/2/2012 4:02:22 PM

Electropherogram Summary Continued ...



Overall Results for sample 9 : COT2 H3

Number of peaks found: 36 Corr. Area 1: 1,236.0
 Noise: 0.8

Peak table for sample 9 : COT2 H3


Peak	Size [bp]	Conc. [pg/μl]	Molarity [pmol/l]	Observations
1	35	125.00	5,411.3	Lower Marker
2	44	7.02	240.4	
3	47	6.66	213.3	
4	147	7.79	80.3	
5	162	9.00	84.3	
6	174	10.08	88.0	
7	236	7.39	47.5	
8	255	15.44	91.6	
9	278	10.24	55.8	
10	286	12.24	64.7	
11	299	10.71	54.3	
12	336	9.45	42.5	
13	343	8.62	38.0	
14	352	7.82	33.7	
15	382	7.89	31.3	
16	394	11.53	44.4	
17	409	13.42	49.6	
18	442	8.25	28.3	
19	459	12.36	40.8	
20	472	13.49	43.3	
21	500	12.79	38.7	
22	602	17.55	44.2	
23	644	17.52	41.2	
24	676	18.76	42.1	
25	834	39.49	71.7	
26	929	24.19	39.4	

Assay Class: High Sensitivity DNA Assay
 Data Path: C:\...ents and Settings\Bioanalyzer\2012-08-02\2012-08-02_003.xad


Created: 8/2/2012 3:17:38 PM
 Modified: 8/2/2012 4:02:22 PM

Electropherogram Summary Continued ...

... Peak table for sample 9 : COT2 H3

Peak	Size [bp]	Conc. [pg/μl]	Molarity [pmol/l]	Observations
27	1,056	42.25	60.6	
28	1,319	35.82	41.1	
29	1,604	33.78	31.9	
30	1,937	25.38	19.9	
31	1,999	27.33	20.7	
32	2,349	23.29	15.0	
33	2,738	46.46	25.7	
34	3,490	92.07	40.0	
35	 10,380	75.00	10.9	Upper Marker
36	34,285	0.00	0.0	
37	46,447	0.00	0.0	
38	56,092	0.00	0.0	

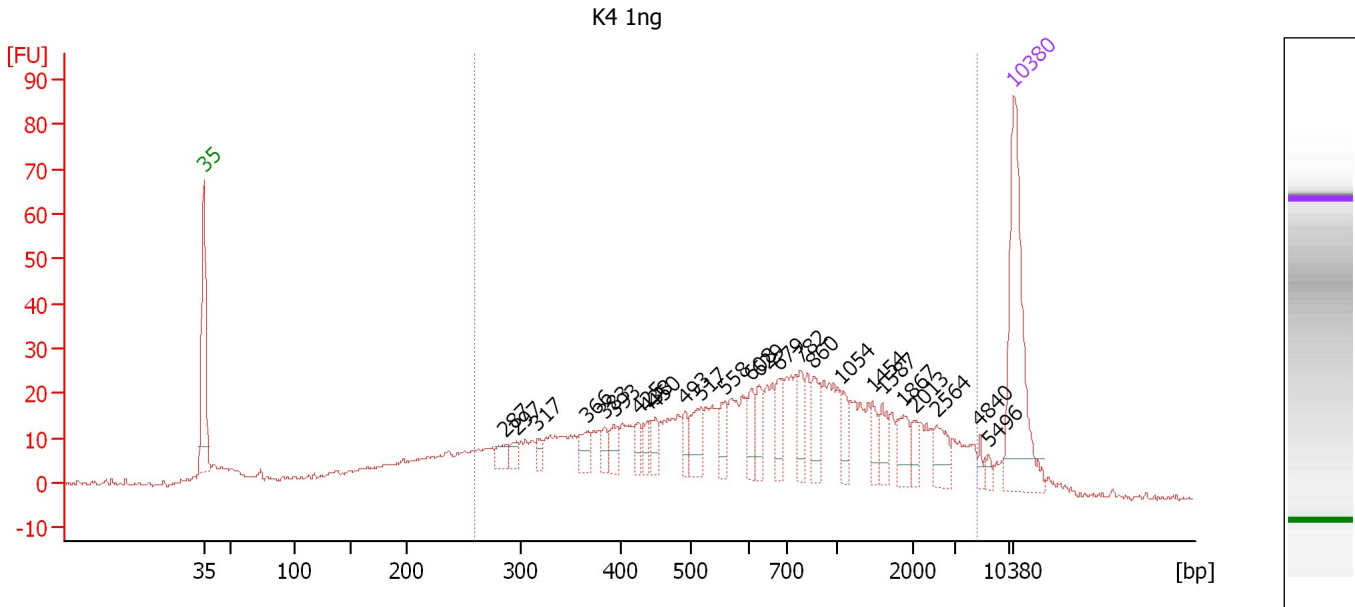
Region table for sample 9 : COT2 H3

From [bp]	To [bp]	Average Size [bp]	Molarity [pmol/l]	Conc. [pg/μl]	Corr. Area	% of Total	Size distribution in CV [%]	Color
606	5,772	2,039	674.1	626.23	1,236.0	60	58.7	

Assay Class: High Sensitivity DNA Assay
 Data Path: C:\...ents and Settings\Bioanalyzer\2012-08-02\2012-08-02_003.xad

Created: 8/2/2012 3:17:38 PM
 Modified: 8/2/2012 4:02:22 PM

Electropherogram Summary Continued ...



Overall Results for sample 10 : K4 1ng

Number of peaks found: 25 Corr. Area 1: 831.0
 Noise: 0.5

Peak table for sample 10 : K4 1ng

Peak	Size [bp]	Conc. [pg/μl]	Molarity [pmol/l]	Observations
1	35	125.00	5,411.3	Lower Marker
2	287	10.62	56.1	
3	297	7.22	36.8	
4	317	6.53	31.2	
5	366	13.52	56.0	
6	383	8.00	31.6	
7	393	11.96	46.2	
8	425	8.60	30.7	
9	438	8.77	30.3	
10	450	11.30	38.1	
11	493	10.02	30.8	
12	517	21.46	62.9	
13	558	13.46	36.5	
14	608	13.94	34.8	
15	629	14.66	35.3	
16	679	16.16	36.0	
17	782	14.37	27.8	
18	860	18.97	33.4	
19	1,054	11.09	15.9	
20	1,454	8.88	9.3	
21	1,587	11.27	10.8	
22	1,867	13.91	11.3	
23	2,013	7.28	5.5	
24	2,564	13.73	8.1	
25	4,840	3.61	1.1	
26	5,496	3.73	1.0	


Assay Class: High Sensitivity DNA Assay
Data Path: C:\...ents and Settings\Bioanalyzer\2012-08-02\2012-08-02_003.xad

Created: 8/2/2012 3:17:38 PM
Modified: 8/2/2012 4:02:22 PM

Electropherogram Summary Continued ...**... Peak table for sample 10 : K4 1ng**

Peak	Size [bp]	Conc. [pg/ μ l]	Molarity [pmol/l]	Observations
27	10,380	75.00	10.9	Upper Marker

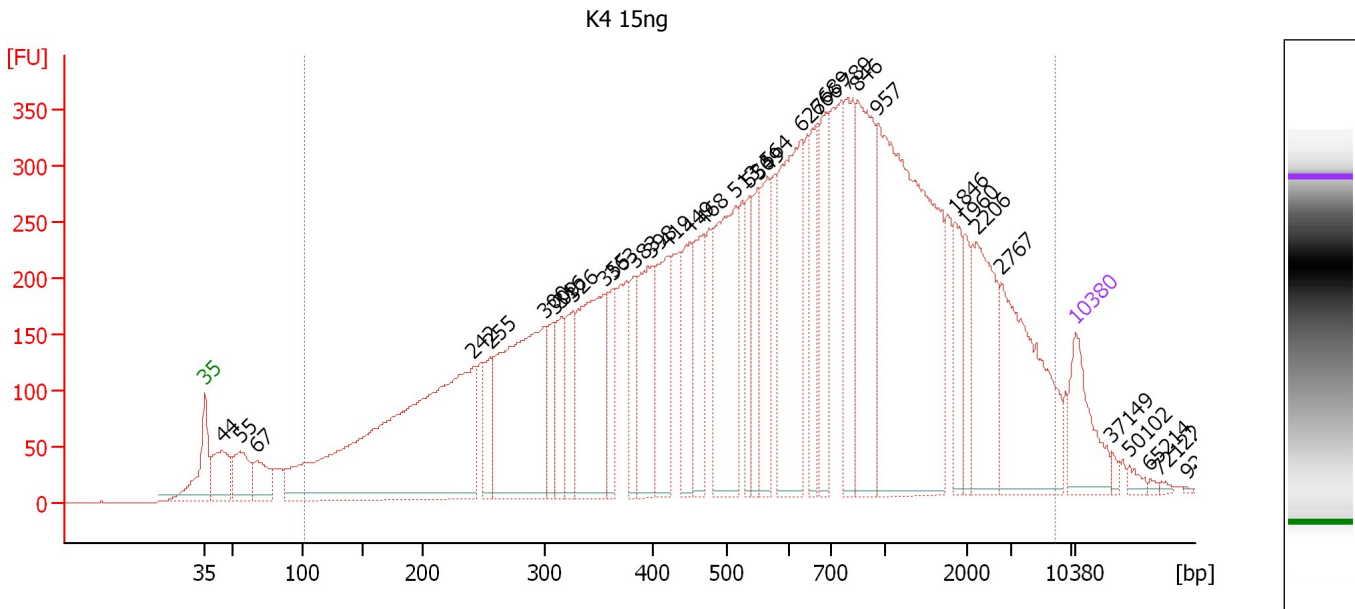
Region table for sample 10 : K4 1ng

From [bp]	To [bp]	Average Size [bp]	Molarity [pmol/l]	Conc. [pg/ μ l]	Corr. Area	% of Total	Size distribution in CV [%]	Color
260	4,613	944	2,235.9	790.19	831.0	80	83.5	

Assay Class: High Sensitivity DNA Assay
 Data Path: C:\...ents and Settings\Bioanalyzer\2012-08-02\2012-08-02_003.xad

Created: 8/2/2012 3:17:38 PM
 Modified: 8/2/2012 4:02:22 PM

Electropherogram Summary Continued ...



Overall Results for sample 11 : K4 15ng

Number of peaks found: 36 Corr. Area 1: 13,707.4
 Noise: 0.6

Peak table for sample 11 : K4 15ng


Peak	Size [bp]	Conc. [pg/μl]	Molarity [pmol/l]	Observations
1	35	125.00	5,411.3	Lower Marker
2	44	97.22	3,352.9	
3	55	88.66	2,433.9	
4	67	67.63	1,528.6	
5	242	828.30	5,194.5	
6	255	75.40	447.1	
7	300	402.14	2,034.0	
8	309	72.89	357.8	
9	316	78.45	376.6	
10	326	88.55	411.8	
11	355	263.71	1,126.0	
12	363	70.88	295.9	
13	383	71.74	283.6	
14	398	148.66	565.4	
15	419	141.24	510.7	
16	449	97.46	328.8	
17	468	115.67	374.4	
18	513	250.00	738.5	
19	536	76.04	214.8	
20	549	82.11	226.5	
21	564	112.51	302.1	
22	627	279.89	676.3	
23	666	99.00	225.3	
24	689	109.53	240.9	
25	789	128.33	246.3	
26	846	228.17	408.5	

Assay Class: High Sensitivity DNA Assay
 Data Path: C:\...ents and Settings\Bioanalyzer\2012-08-02\2012-08-02_003.xad

Created: 8/2/2012 3:17:38 PM
 Modified: 8/2/2012 4:02:22 PM

Electropherogram Summary Continued ...

... Peak table for sample 11 : K4 15ng

Peak	Size [bp]	Conc. [pg/μl]	Molarity [pmol/l]	Observations
27	957	592.28	937.6	
28	1,846	62.03	50.9	
29	1,960	48.26	37.3	
30	2,206	137.30	94.3	
31	2,767	203.61	111.5	
32	 10,380	75.00	10.9	Upper Marker
33	37,149	0.00	0.0	
34	50,102	0.00	0.0	
35	65,214	0.00	0.0	
36	72,122	0.00	0.0	
37	92,415	0.00	0.0	
38	102,346	0.00	0.0	

Region table for sample 11 : K4 15ng

From [bp]	To [bp]	Average Size [bp]	Molarity [pmol/l]	Conc. [pg/μl]	Corr. Area	% of Total	Size distribution in CV [%]	Color
102	5,914	923	21,827.7	5,692.89	13,707.4	95	100.0	

Assay Class: High Sensitivity DNA Assay
Data Path: C:\...ents and Settings\Bioanalyzer\2012-08-02\2012-08-02_003.xad

Created: 8/2/2012 3:17:38 PM
Modified: 8/2/2012 4:02:22 PM

Gel Image

