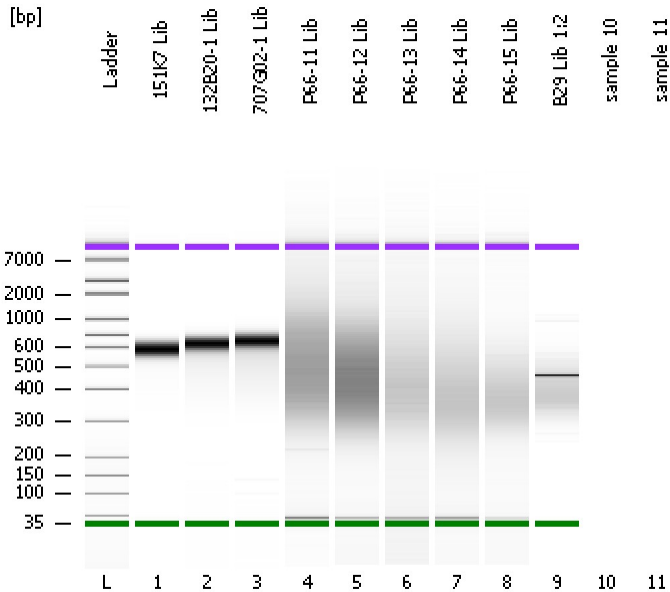


Assay Class: High Sensitivity DNA Assay
Data Path: C:\...ents and Settings\Bioanalyzer\2012-08-03\2012-08-03_002.xad

Created: 8/3/2012 10:53:33 AM
Modified: 8/3/2012 11:32:07 AM

Electrophoresis File Run Summary



Instrument Information:

Instrument Name: DE13701086 Firmware: C.01.069
Serial#: DE13701086 Type: G2938B

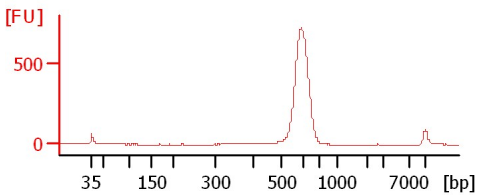
Assay Information:

Assay Origin Path: C:\Program Files\Agilent\2100 bioanalyzer\2100 expert\assays\dsDNA\High Sensitivity DNA.xsy
Assay Class: High Sensitivity DNA Assay
Version: 1.03
Assay Comments: Copyright © 2003-2010 Agilent Technologies

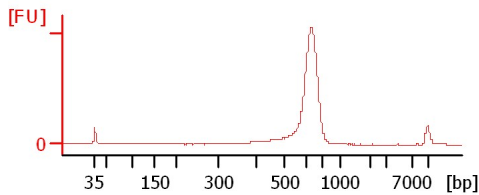
Chip Information:

Chip Lot #: Reagent Kit Lot #: Chip Comments:

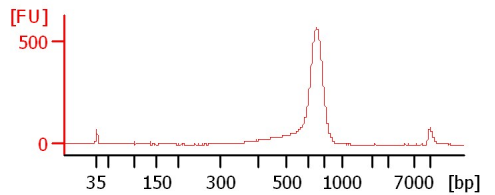
151K7 Lib



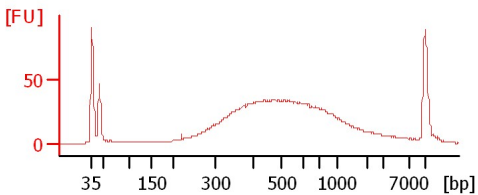
132B20-1 Lib



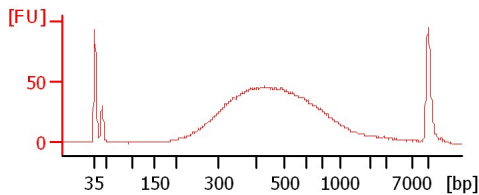
707G02-1 Lib



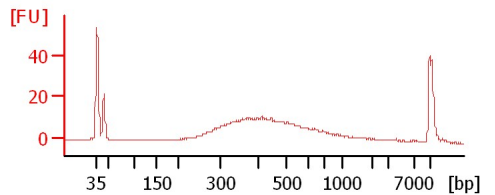
P66-11 Lib



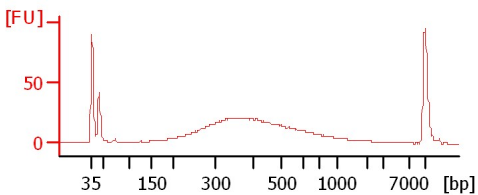
P66-12 Lib



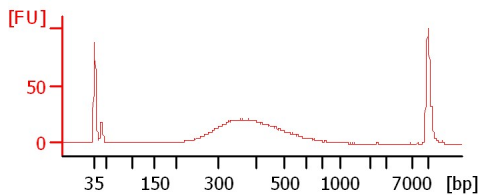
P66-13 Lib



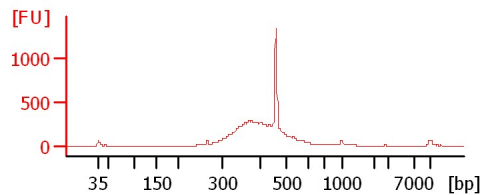
P66-14 Lib



P66-15 Lib



B29 Lib 1:2



Assay Class: High Sensitivity DNA Assay
Data Path: C:\...ents and Settings\Bioanalyzer\2012-08-03\2012-08-03_002.xad

Created: 8/3/2012 10:53:33 AM
Modified: 8/3/2012 11:32:07 AM

Electrophoresis File Run Summary (Chip Summary)

Sample Name	Sample Comment	Rest. Digest	Status	Observation	Result Label	Result Color
151K7 Lib		<input type="checkbox"/>	✓			
132B20-1 Lib		<input type="checkbox"/>	✓			
707G02-1 Lib		<input type="checkbox"/>	✓			
P66-11 Lib		<input type="checkbox"/>	✓			
P66-12 Lib		<input type="checkbox"/>	✓			
P66-13 Lib		<input type="checkbox"/>	✓			
P66-14 Lib		<input type="checkbox"/>	✓			
P66-15 Lib		<input type="checkbox"/>	✓			
B29 Lib 1:2		<input type="checkbox"/>	✓			
sample 10		<input type="checkbox"/>				
sample 11		<input type="checkbox"/>				
Ladder		<input type="checkbox"/>	✓			

Chip Lot #

Reagent Kit Lot #

Chip Comments :

Assay Class: High Sensitivity DNA Assay
Data Path: C:\...ents and Settings\Bioanalyzer\2012-08-03\2012-08-03_002.xad

Created: 8/3/2012 10:53:33 AM
Modified: 8/3/2012 11:32:07 AM

Electrophoresis Assay Details

General Analysis Settings

Number of Available Sample and Ladder Wells (Max.) : 12
Minimum Visible Range [s] : 32
Maximum Visible Range [s] : 138
Start Analysis Time Range [s] : 33
End Analysis Time Range [s] : 137.5
Ladder Concentration [pg/μl] : 1950
Uses Standard Area for Ladder Fragments
Lower Marker Concentration [pg/μl] : 125
Upper Marker Concentration [pg/μl] : 75
Used Upper Marker for Quantitation
Standard Curve Fit is Point to Point
Show Data Aligned to Lower and Upper Marker

Integrator Settings

Integration Start Time [s] : 33.05
Integration End Time [s] : 137
Slope Threshold : 0.8
Height Threshold [FU] : 5
Area Threshold : 0.1
Width Threshold [s] : 0.6
Baseline Plateau [s] : 0.5

Filter Settings

Filter Width [s] : 0.5
Polynomial Order : 4

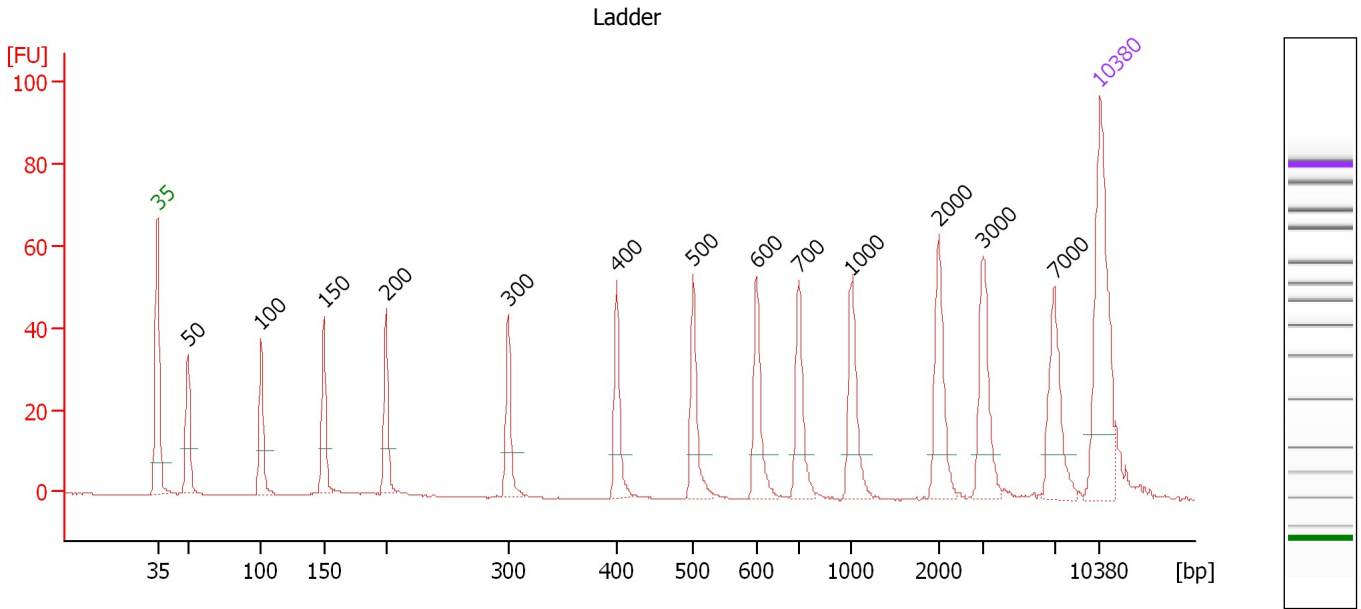
Ladder

Ladder Peak	Size	Area
1	35	160
2	50	210
3	100	208
4	150	221
5	200	242
6	300	270
7	400	305
8	500	306
9	600	336
10	700	321
11	1000	366
12	2000	413
13	3000	411
14	7000	400
15	10380	214

Assay Class: High Sensitivity DNA Assay
 Data Path: C:\...ents and Settings\Bioanalyzer\2012-08-03\2012-08-03_002.xad

Created: 8/3/2012 10:53:33 AM
 Modified: 8/3/2012 11:32:07 AM

Electropherogram Summary



Overall Results for Ladder

Noise: 0.1

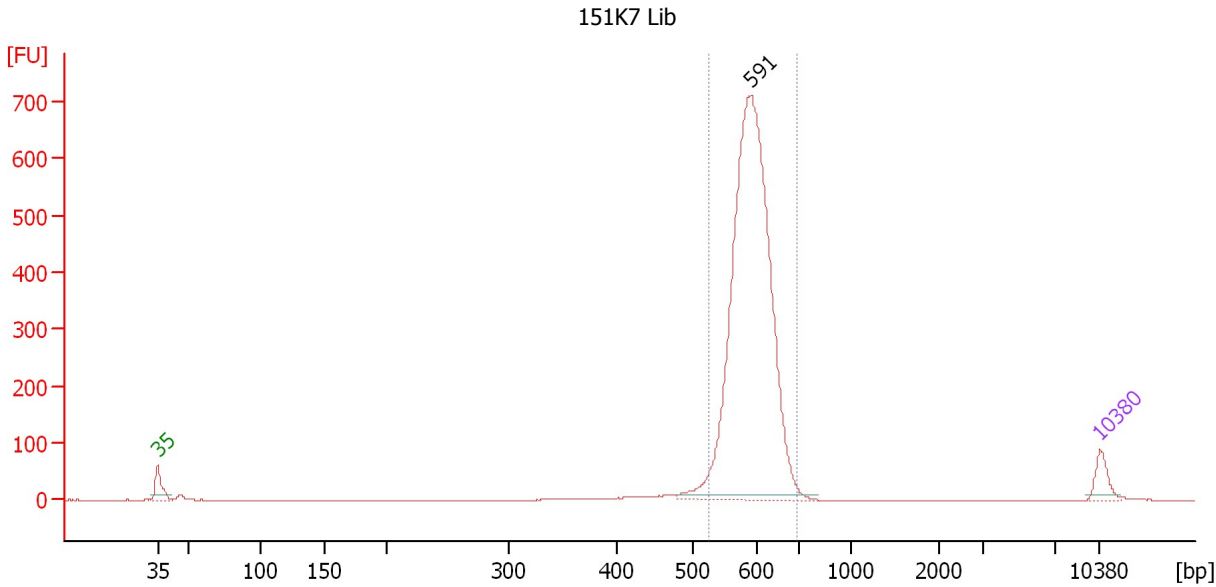
Peak table for Ladder

Peak	Size [bp]	Conc. [pg/μl]	Molarity [pmol/l]	Observations
1	35	125.00	5,411.3	Lower Marker
2	50	150.00	4,545.5	Ladder Peak
3	100	150.00	2,272.7	Ladder Peak
4	150	150.00	1,515.2	Ladder Peak
5	200	150.00	1,136.4	Ladder Peak
6	300	150.00	757.6	Ladder Peak
7	400	150.00	568.2	Ladder Peak
8	500	150.00	454.5	Ladder Peak
9	600	150.00	378.8	Ladder Peak
10	700	150.00	324.7	Ladder Peak
11	1,000	150.00	227.3	Ladder Peak
12	2,000	150.00	113.6	Ladder Peak
13	3,000	150.00	75.8	Ladder Peak
14	7,000	150.00	32.5	Ladder Peak
15	10,380	75.00	10.9	Upper Marker

Assay Class: High Sensitivity DNA Assay
 Data Path: C:\...ents and Settings\Bioanalyzer\2012-08-03\2012-08-03_002.xad

Created: 8/3/2012 10:53:33 AM
 Modified: 8/3/2012 11:32:07 AM

Electropherogram Summary Continued ...



Setpoint Deviations for sample 1 : 151K7 Lib

Height Threshold [FU] : 10

Overall Results for sample 1 : 151K7 Lib

Number of peaks found: 1 Corr. Area 1: 2,794.7
 Noise: 0.2

Peak table for sample 1 : 151K7 Lib

Peak	Size [bp]	Conc. [pg/μl]	Molarity [pmol/l]	Observations
1	35	125.00	5,411.3	Lower Marker
2	591	3,114.60	7,985.0	
3	10,380	75.00	10.9	Upper Marker

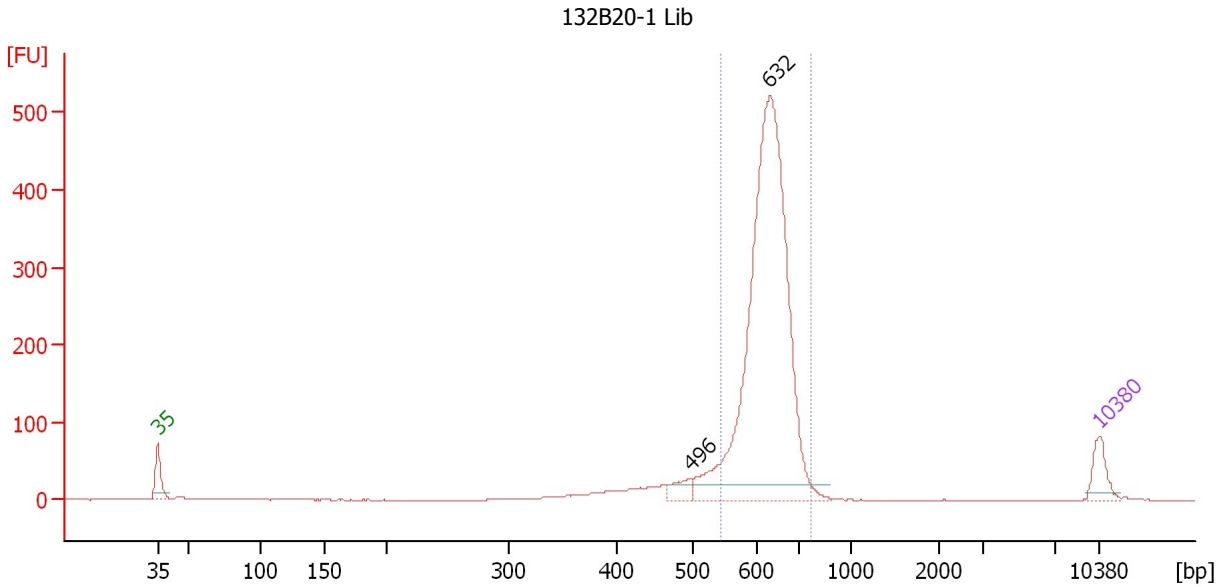
Region table for sample 1 : 151K7 Lib

From [bp]	To [bp]	Average Size [bp]	Molarity [pmol/l]	Conc. [pg/μl]	Corr. Area	% of Total	Size distribution in CV [%]	Color
525	697	596	7,870.2	3,086.15	2,794.7	94	5.3	Blue

Assay Class: High Sensitivity DNA Assay
 Data Path: C:\...ents and Settings\Bioanalyzer\2012-08-03\2012-08-03_002.xad

Created: 8/3/2012 10:53:33 AM
 Modified: 8/3/2012 11:32:07 AM

Electropherogram Summary Continued ...



Setpoint Deviations for sample 2 : 132B20-1 Lib

Height Threshold [FU] : 20

Overall Results for sample 2 : 132B20-1 Lib

Number of peaks found: 2 Corr. Area 1: 1,940.3
 Noise: 0.2

Peak table for sample 2 : 132B20-1 Lib

Peak	Size [bp]	Conc. [pg/µl]	Molarity [pmol/l]	Observations
1	35	125.00	5,411.3	Lower Marker
2	496	65.79	200.9	
3	632	2,214.17	5,310.8	
4	10,380	75.00	10.9	Upper Marker

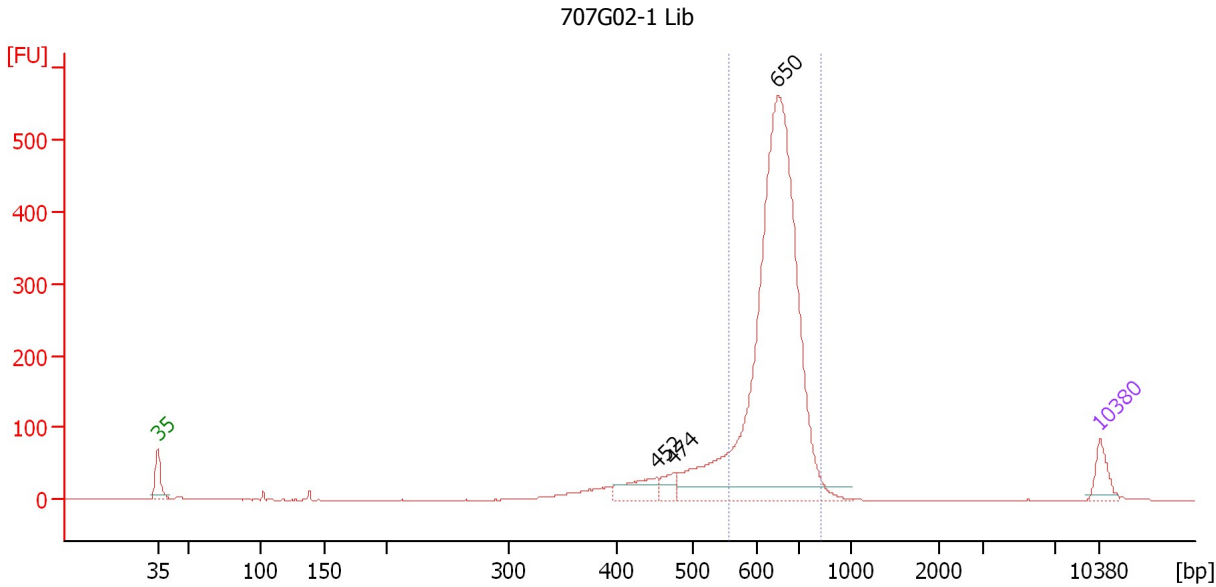
Region table for sample 2 : 132B20-1 Lib

From [bp]	To [bp]	Average Size [bp]	Molarity [pmol/l]	Conc. [pg/µl]	Corr. Area	% of Total	Size distribution in CV [%]	Color
543	768	629	5,138.4	2,127.29	1,940.3	84	6.0	Blue

Assay Class: High Sensitivity DNA Assay
 Data Path: C:\...ents and Settings\Bioanalyzer\2012-08-03\2012-08-03_002.xad

Created: 8/3/2012 10:53:33 AM
 Modified: 8/3/2012 11:32:07 AM

Electropherogram Summary Continued ...



Setpoint Deviations for sample 3 : 707G02-1 Lib

Height Threshold [FU] : 20

Overall Results for sample 3 : 707G02-1 Lib

Number of peaks found: 3 Corr. Area 1: 2,128.2
 Noise: 0.2

Peak table for sample 3 : 707G02-1 Lib

Peak	Size [bp]	Conc. [pg/µl]	Molarity [pmol/l]	Observations
1	35	125.00	5,411.3	Lower Marker
2	452	150.76	504.8	
3	474	71.50	228.5	
4	650	2,889.64	6,740.5	
5	10,380	75.00	10.9	Upper Marker

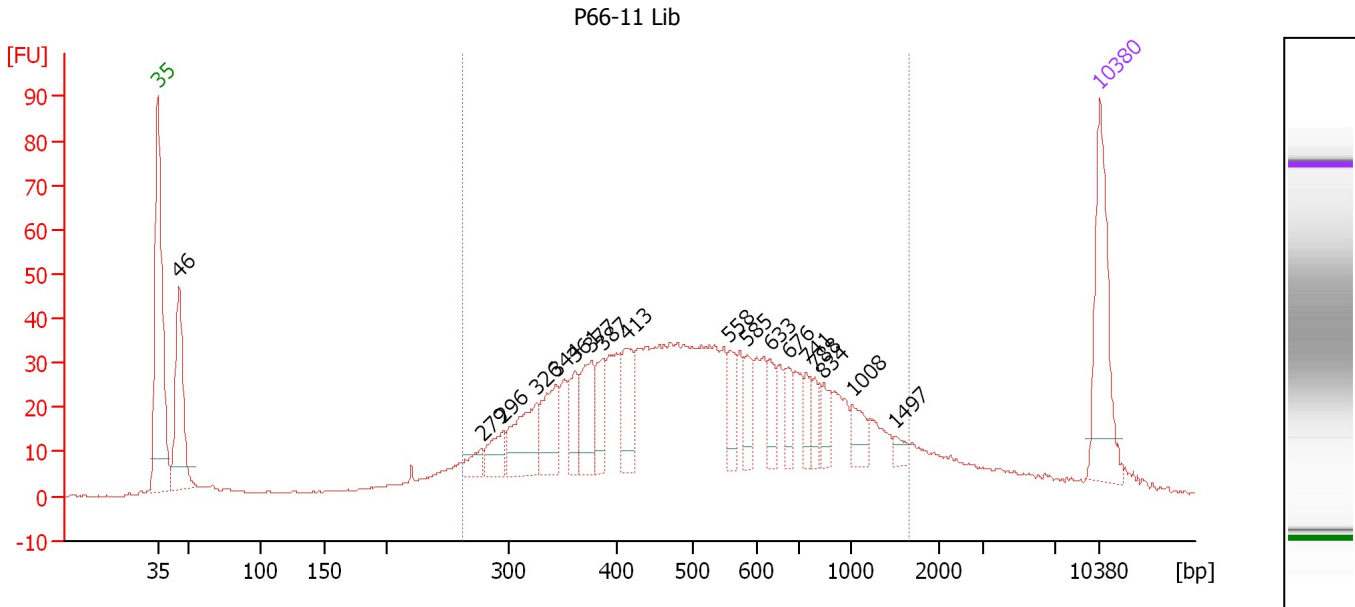
Region table for sample 3 : 707G02-1 Lib

From [bp]	To [bp]	Average Size [bp]	Molarity [pmol/l]	Conc. [pg/µl]	Corr. Area	% of Total	Size distribution in CV [%]	Color
556	828	652	6,076.8	2,603.39	2,128.2	79	7.1	Blue

Assay Class: High Sensitivity DNA Assay
 Data Path: C:\...ents and Settings\Bioanalyzer\2012-08-03\2012-08-03_002.xad

Created: 8/3/2012 10:53:33 AM
 Modified: 8/3/2012 11:32:07 AM

Electropherogram Summary Continued ...



Overall Results for sample 4 : P66-11 Lib

Number of peaks found: 18 Corr. Area 1: 1,069.0
 Noise: 0.2

Peak table for sample 4 : P66-11 Lib

Peak	Size [bp]	Conc. [pg/μl]	Molarity [pmol/l]	Observations
1	35	125.00	5,411.3	Lower Marker
2	46	131.13	4,344.3	
3	279	16.76	91.1	
4	296	28.12	144.0	
5	326	61.92	288.0	
6	344	49.74	219.1	
7	361	31.63	132.6	
8	377	49.05	197.3	
9	387	30.03	117.5	
10	413	41.93	153.7	
11	558	24.22	65.8	
12	585	23.79	61.6	
13	633	20.57	49.2	
14	676	17.90	40.1	
15	741	16.25	33.2	
16	788	14.96	28.8	
17	834	16.36	29.7	
18	1,008	18.11	27.2	
19	1,497	6.88	7.0	
20	10,380	75.00	10.9	Upper Marker

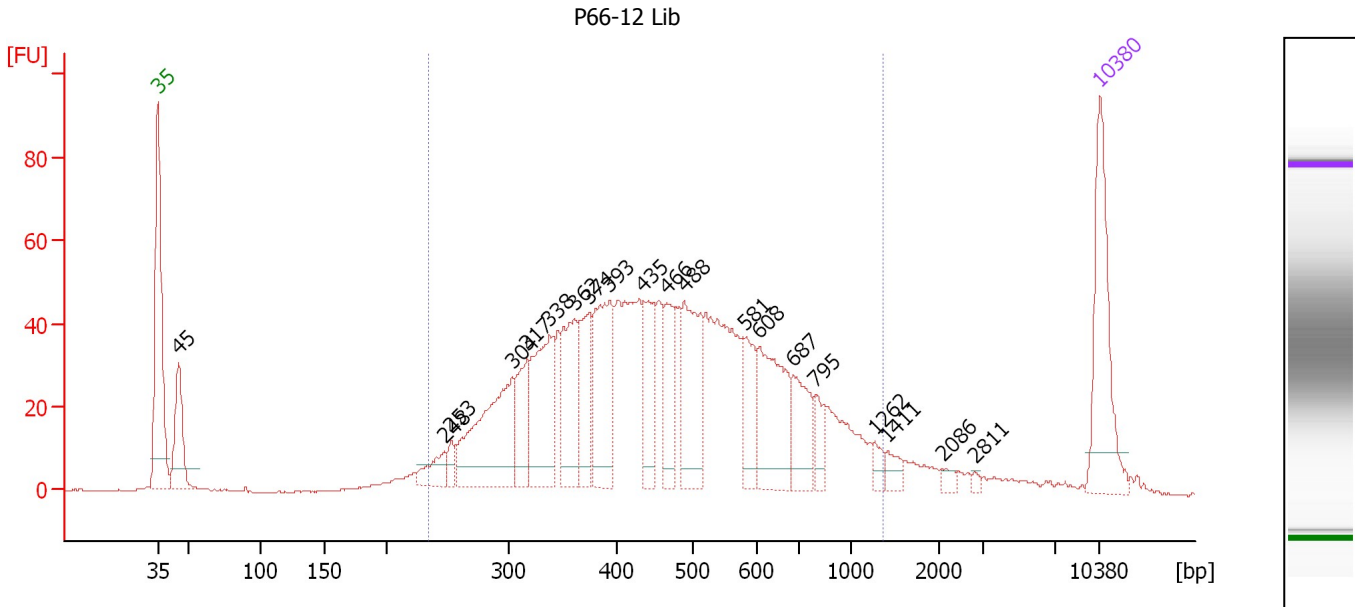
Region table for sample 4 : P66-11 Lib

From [bp]	To [bp]	Average Size [bp]	Molarity [pmol/l]	Conc. [pg/μl]	Corr. Area	% of Total	Size distribution in CV [%]	Color
263	1,661	575	4,200.3	1,280.53	1,069.0	79	47.7	Blue

Assay Class: High Sensitivity DNA Assay
 Data Path: C:\...ents and Settings\Bioanalyzer\2012-08-03\2012-08-03_002.xad

Created: 8/3/2012 10:53:33 AM
 Modified: 8/3/2012 11:32:07 AM

Electropherogram Summary Continued ...



Overall Results for sample 5 : P66-12 Lib

Number of peaks found: 20 Corr. Area 1: 1,373.0
 Noise: 0.2

Peak table for sample 5 : P66-12 Lib

Peak	Size [bp]	Conc. [pg/μl]	Molarity [pmol/l]	Observations
1	35	125.00	5,411.3	Lower Marker
2	45	71.44	2,388.9	
3	248	24.25	148.2	
4	253	11.86	70.9	
5	304	136.36	678.9	
6	317	47.99	229.0	
7	338	97.07	434.7	
8	362	76.18	319.1	
9	374	54.71	221.5	
10	393	96.35	371.2	
11	435	51.86	180.5	
12	466	49.81	162.0	
13	488	90.02	279.6	
14	581	38.22	99.7	
15	608	86.31	215.2	
16	687	45.50	100.3	
17	795	19.42	37.0	
18	1,262	8.06	9.7	
19	1,411	9.57	10.3	
20	2,086	4.25	3.1	
21	2,811	2.05	1.1	
22	10,380	75.00	10.9	Upper Marker

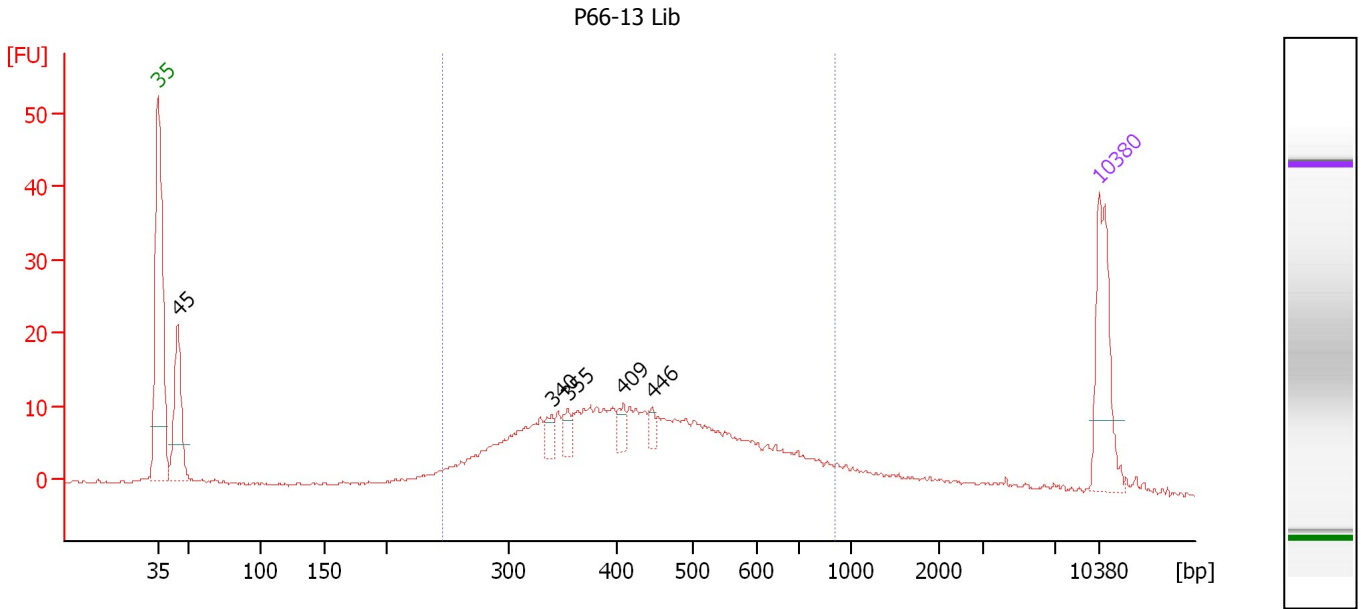
Region table for sample 5 : P66-12 Lib

From [bp]	To [bp]	Average Size [bp]	Molarity [pmol/l]	Conc. [pg/μl]	Corr. Area	% of Total	Size distribution in CV [%]	Color
235	1,358	495	5,163.8	1,428.67	1,373.0	88	38.9	Blue

Assay Class: High Sensitivity DNA Assay
 Data Path: C:\...ents and Settings\Bioanalyzer\2012-08-03\2012-08-03_002.xad

Created: 8/3/2012 10:53:33 AM
 Modified: 8/3/2012 11:32:07 AM

Electropherogram Summary Continued ...



Overall Results for sample 6 : P66-13 Lib

Number of peaks found: 5 Corr. Area 1: 301.0
 Noise: 0.2

Peak table for sample 6 : P66-13 Lib

Peak	Size [bp]	Conc. [pg/μl]	Molarity [pmol/l]	Observations
1	35	125.00	5,411.3	Lower Marker
2	45	113.22	3,803.3	
3	340	16.49	73.4	
4	355	14.94	63.7	
5	409	15.29	56.7	
6	446	10.02	34.0	
7	10,380	75.00	10.9	Upper Marker

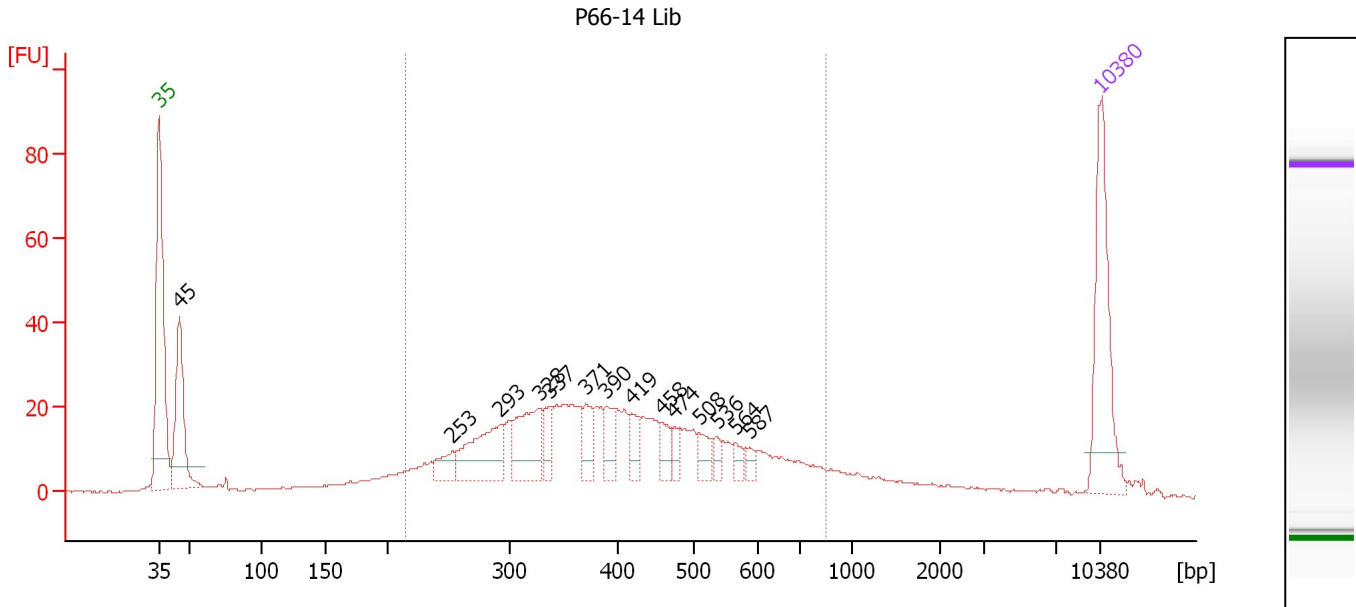
Region table for sample 6 : P66-13 Lib

From [bp]	To [bp]	Average Size [bp]	Molarity [pmol/l]	Conc. [pg/μl]	Corr. Area	% of Total	Size distribution in CV [%]	Color
246	909	449	2,895.8	764.89	301.0	74	30.0	Blue

Assay Class: High Sensitivity DNA Assay
 Data Path: C:\...ents and Settings\Bioanalyzer\2012-08-03\2012-08-03_002.xad

Created: 8/3/2012 10:53:33 AM
 Modified: 8/3/2012 11:32:07 AM

Electropherogram Summary Continued ...



Overall Results for sample 7 : P66-14 Lib

Number of peaks found: 14 Corr. Area 1: 607.5
 Noise: 0.2

Peak table for sample 7 : P66-14 Lib

Peak	Size [bp]	Conc. [pg/μl]	Molarity [pmol/l]	Observations
1	35	125.00	5,411.3	Lower Marker
2	45	110.45	3,697.8	
3	253	19.72	118.0	
4	293	68.86	356.0	
5	328	61.44	284.0	
6	337	19.03	85.5	
7	371	22.08	90.2	
8	390	21.99	85.5	
9	419	17.91	64.8	
10	458	14.77	48.9	
11	474	11.33	36.2	
12	508	14.38	42.9	
13	536	8.34	23.6	
14	564	7.76	20.8	
15	587	7.70	19.9	
16	10,380	75.00	10.9	Upper Marker

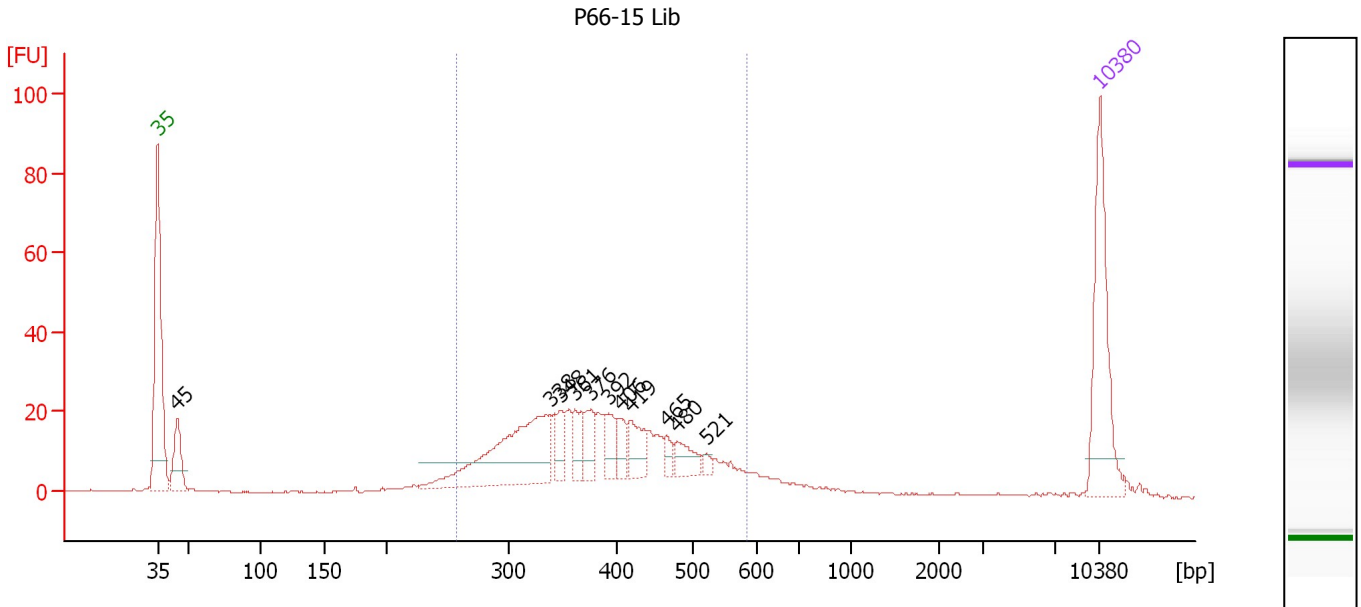
Region table for sample 7 : P66-14 Lib

From [bp]	To [bp]	Average Size [bp]	Molarity [pmol/l]	Conc. [pg/μl]	Corr. Area	% of Total	Size distribution in CV [%]	Color
214	849	415	2,941.4	709.03	607.5	75	31.0	Blue

Assay Class: High Sensitivity DNA Assay
 Data Path: C:\...ents and Settings\Bioanalyzer\2012-08-03\2012-08-03_002.xad

Created: 8/3/2012 10:53:33 AM
 Modified: 8/3/2012 11:32:07 AM

Electropherogram Summary Continued ...



Overall Results for sample 8 : P66-15 Lib

Number of peaks found: 11 Corr. Area 1: 429.6
 Noise: 0.2

Peak table for sample 8 : P66-15 Lib

Peak	Size [bp]	Conc. [pg/μl]	Molarity [pmol/l]	Observations
1	35	125.00	5,411.3	Lower Marker
2	45	43.79	1,487.2	
3	338	134.81	603.6	
4	348	24.06	104.9	
5	361	20.48	85.9	
6	376	23.78	95.9	
7	392	20.93	80.8	
8	406	14.77	55.1	
9	419	26.90	97.3	
10	465	9.06	29.5	
11	480	18.39	58.1	
12	521	4.03	11.7	
13	10,380	75.00	10.9	Upper Marker

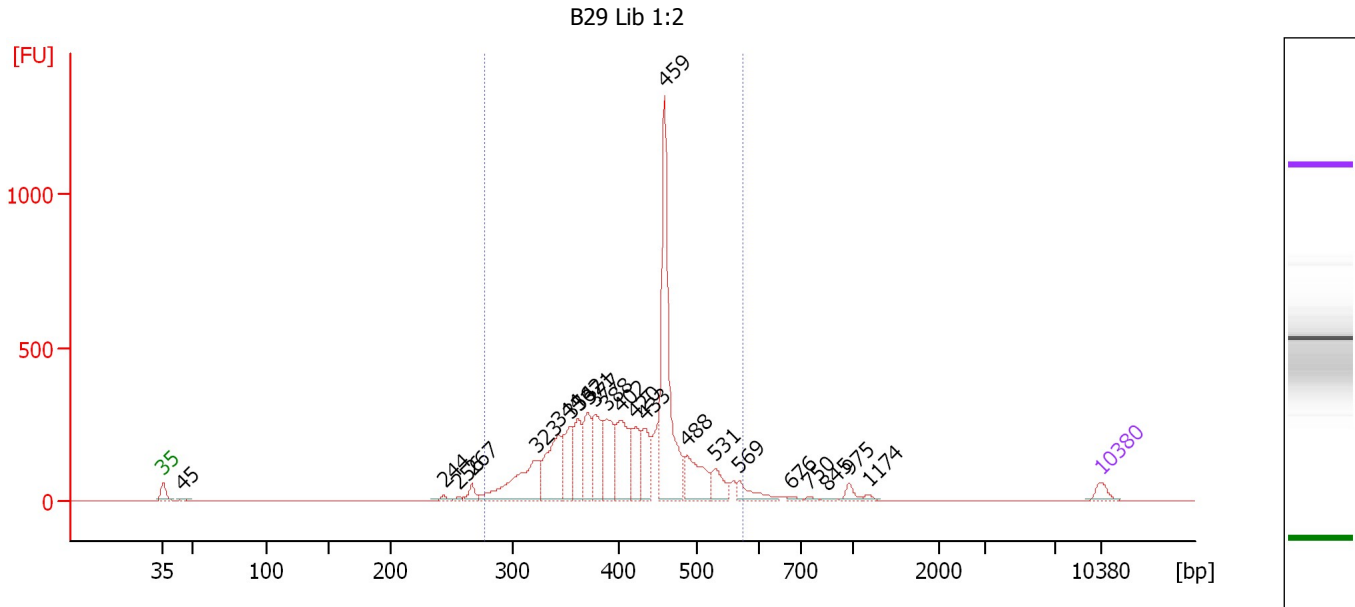
Region table for sample 8 : P66-15 Lib

From [bp]	To [bp]	Average Size [bp]	Molarity [pmol/l]	Conc. [pg/μl]	Corr. Area	% of Total	Size distribution in CV [%]	Color
258	584	390	2,033.7	495.76	429.6	79	19.9	Blue

Assay Class: High Sensitivity DNA Assay
 Data Path: C:\...ents and Settings\Bioanalyzer\2012-08-03\2012-08-03_002.xad

Created: 8/3/2012 10:53:33 AM
 Modified: 8/3/2012 11:32:07 AM

Electropherogram Summary Continued ...



Overall Results for sample 9 : B29 Lib 1:2

Number of peaks found: 23 Corr. Area 1: 4,828.8
 Noise: 0.1

Peak table for sample 9 : B29 Lib 1:2

Peak	Size [bp]	Conc. [pg/μl]	Molarity [pmol/l]	Observations
1	35	125.00	5,411.3	Lower Marker
2	45	25.42	855.3	
3	244	42.34	262.9	
4	256	27.47	162.4	
5	267	104.58	593.0	
6	323	895.15	4,203.6	
7	344	755.48	3,324.3	
8	354	482.67	2,064.5	
9	362	427.74	1,791.9	
10	371	482.59	1,971.1	
11	377	503.86	2,024.1	
12	388	595.36	2,323.1	
13	402	644.05	2,428.2	
14	420	433.39	1,562.4	
15	433	386.92	1,355.2	
16	459	1,994.07	6,583.7	
17	488	507.32	1,575.6	
18	531	234.98	670.5	
19	569	184.52	491.1	
20	676	23.12	51.8	
21	750	18.01	36.4	
22	845	11.09	19.9	
23	975	71.71	111.4	
24	1,174	24.16	31.2	
25	10,380	75.00	10.9	Upper Marker

Assay Class: High Sensitivity DNA Assay
Data Path: C:\...ents and Settings\Bioanalyzer\2012-08-03\2012-08-03_002.xad

Created: 8/3/2012 10:53:33 AM
Modified: 8/3/2012 11:32:07 AM

Electropherogram Summary Continued ...

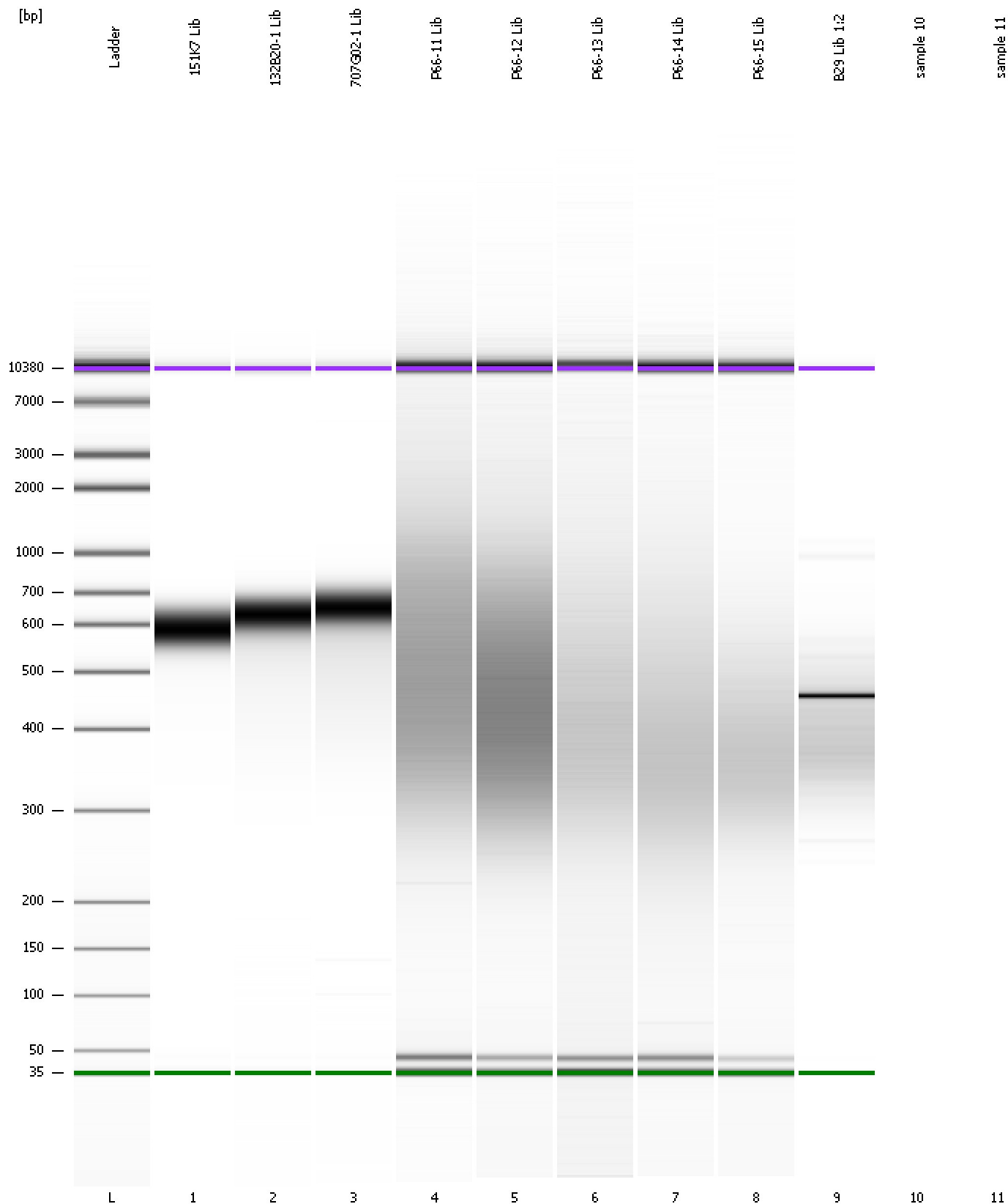
... Region table for sample 9 : B29 Lib 1:2

From [bp]	To [bp]	Average Size [bp]	Molarity [pmol/l]	Conc. [pg/μl]	Corr. Area	% of Total	Size distribution in CV [%]	Color
277	575	413	33,565.2	8,861.07	4,828.8	94	15.2	■

Assay Class: High Sensitivity DNA Assay
Data Path: C:\...ents and Settings\Bioanalyzer\2012-08-03\2012-08-03_002.xad

Created: 8/3/2012 10:53:33 AM
Modified: 8/3/2012 11:32:07 AM

Gel Image



Assay Class: High Sensitivity DNA Assay
Data Path: C:\...ents and Settings\Bioanalyzer\2012-08-03\2012-08-03_002.xad

Created: 8/3/2012 10:53:33 AM
Modified: 8/3/2012 11:32:07 AM

Invalid Samples

Sample 10 has not been run, no results available.

Sample 11 has not been run, no results available.