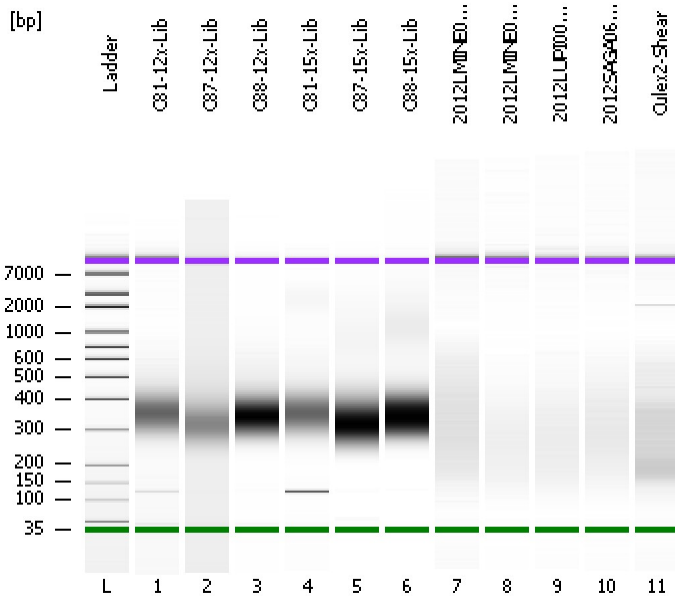


Assay Class: High Sensitivity DNA Assay
Data Path: C:\...ents and Settings\Bioanalyzer\2012-08-03\2012-08-03_004.xad

Created: 8/3/2012 2:10:49 PM
Modified: 8/3/2012 2:52:46 PM

Electrophoresis File Run Summary



Instrument Information:

Instrument Name: DE13701086 Firmware: C.01.069
Serial#: DE13701086 Type: G2938B

Assay Information:

Assay Origin Path: C:\Program Files\Agilent\2100 bioanalyzer\2100 expert\assays\dsDNA\High Sensitivity DNA.xsy
Assay Class: High Sensitivity DNA Assay
Version: 1.03
Assay Comments: Copyright © 2003-2010 Agilent Technologies

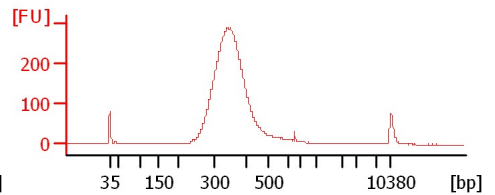
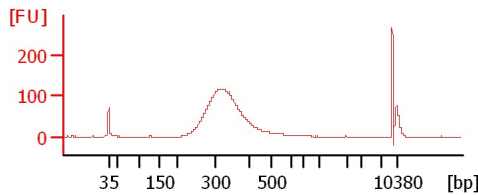
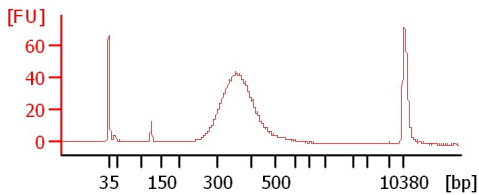
Chip Information:

Chip Lot #:
Reagent Kit Lot #:
Chip Comments:

C81-12x-Lib

C87-12x-Lib

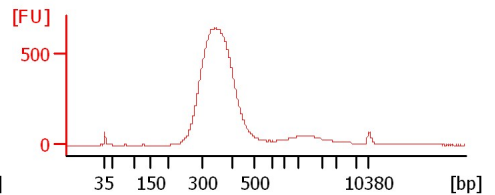
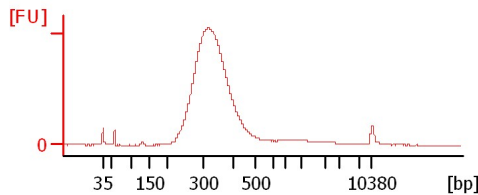
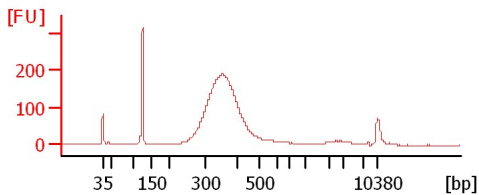
C88-12x-Lib



C81-15x-Lib

C87-15x-Lib

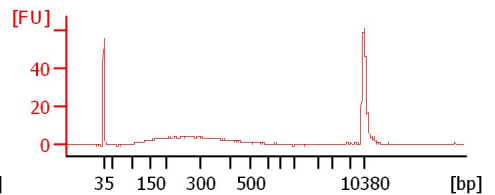
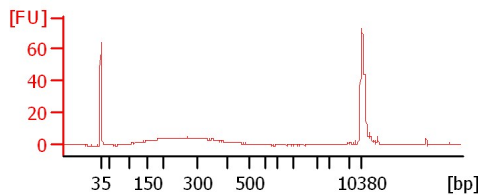
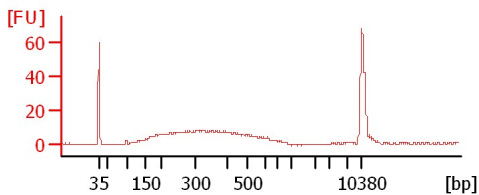
C88-15x-Lib



2012LMINE003-Shear

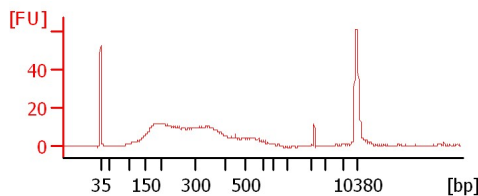
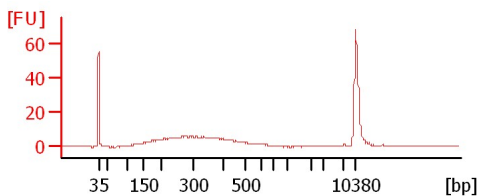
2012LMINE006-Shear

2012LUP1005-Shear



2012SAGA060-Shear

Culex2-Shear



Assay Class: High Sensitivity DNA Assay
Data Path: C:\...ents and Settings\Bioanalyzer\2012-08-03\2012-08-03_004.xad

Created: 8/3/2012 2:10:49 PM
Modified: 8/3/2012 2:52:46 PM

Electrophoresis File Run Summary (Chip Summary)

Sample Name	Sample Comment	Rest. Digest	Status	Observation	Result Label	Result Color
C81-12x-Lib		<input type="checkbox"/>	✓			
C87-12x-Lib		<input type="checkbox"/>	✓			
C88-12x-Lib		<input type="checkbox"/>	✓			
C81-15x-Lib		<input type="checkbox"/>	✓			
C87-15x-Lib		<input type="checkbox"/>	✓			
C88-15x-Lib		<input type="checkbox"/>	✓			
2012LMINE003-Shear		<input type="checkbox"/>	✓			
2012LMINE006-Shear		<input type="checkbox"/>	✓			
2012LUPI005-Shear		<input type="checkbox"/>	✓			
2012SAGA060-Shear		<input type="checkbox"/>	✓			
Culex2-Shear		<input type="checkbox"/>	✓			
Ladder		<input type="checkbox"/>	✓			

Chip Lot #

Reagent Kit Lot #

Chip Comments :

Assay Class: High Sensitivity DNA Assay
Data Path: C:\...ents and Settings\Bioanalyzer\2012-08-03\2012-08-03_004.xad

Created: 8/3/2012 2:10:49 PM
Modified: 8/3/2012 2:52:46 PM

Electrophoresis Assay Details

General Analysis Settings

Number of Available Sample and Ladder Wells (Max.) : 12
Minimum Visible Range [s] : 32
Maximum Visible Range [s] : 138
Start Analysis Time Range [s] : 33
End Analysis Time Range [s] : 137.5
Ladder Concentration [pg/μl] : 1950
Uses Standard Area for Ladder Fragments
Lower Marker Concentration [pg/μl] : 125
Upper Marker Concentration [pg/μl] : 75
Used Upper Marker for Quantitation
Standard Curve Fit is Point to Point
Show Data Aligned to Lower and Upper Marker

Integrator Settings

Integration Start Time [s] : 33.05
Integration End Time [s] : 137
Slope Threshold : 0.8
Height Threshold [FU] : 5
Area Threshold : 0.1
Width Threshold [s] : 0.6
Baseline Plateau [s] : 0.5

Filter Settings

Filter Width [s] : 0.5
Polynomial Order : 4

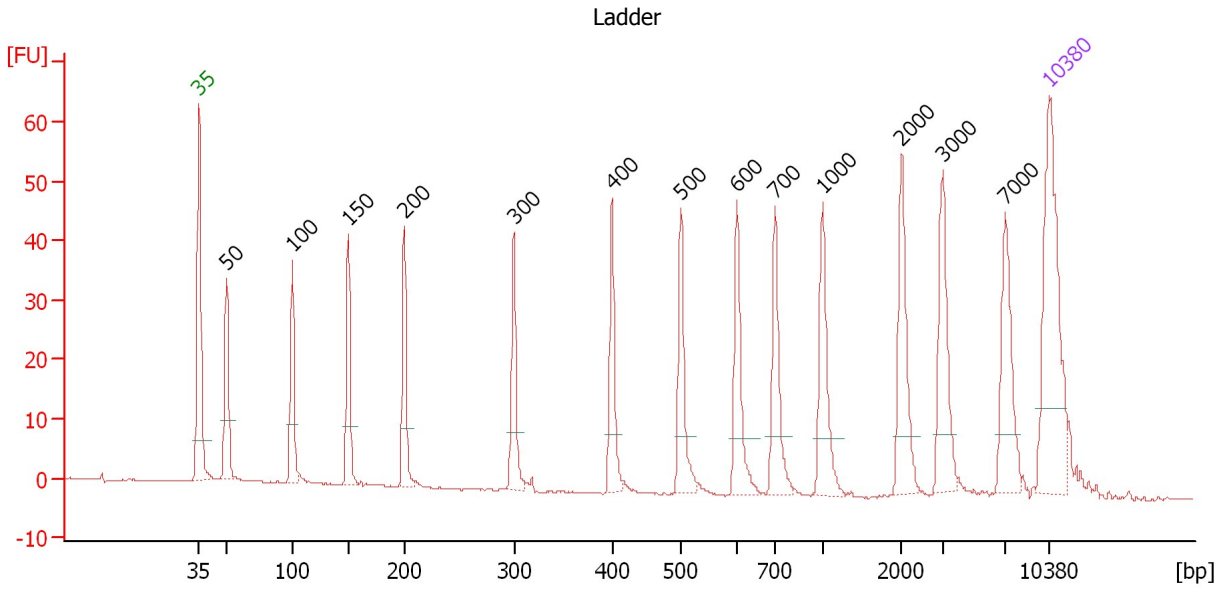
Ladder

Ladder Peak	Size	Area
1	35	160
2	50	210
3	100	208
4	150	221
5	200	242
6	300	270
7	400	305
8	500	306
9	600	336
10	700	321
11	1000	366
12	2000	413
13	3000	411
14	7000	400
15	10380	214

Assay Class: High Sensitivity DNA Assay
 Data Path: C:\...ents and Settings\Bioanalyzer\2012-08-03\2012-08-03_004.xad

Created: 8/3/2012 2:10:49 PM
 Modified: 8/3/2012 2:52:46 PM

Electropherogram Summary



Overall Results for Ladder

Noise: 0.1

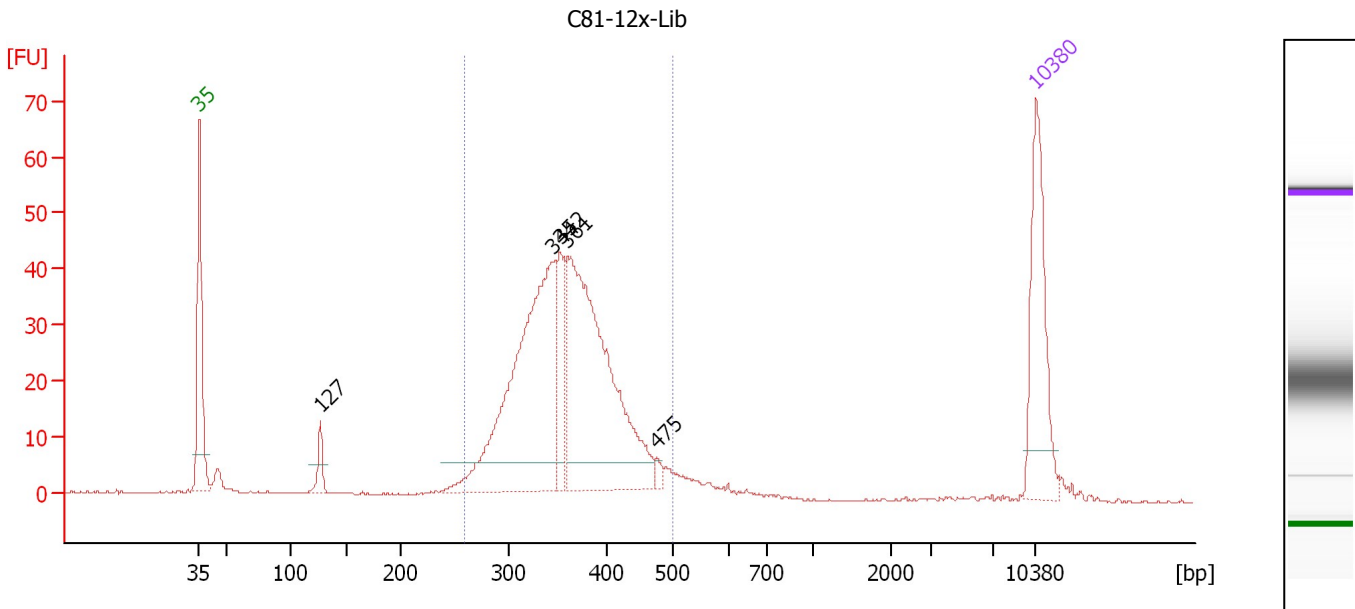
Peak table for Ladder

Peak	Size [bp]	Conc. [pg/μl]	Molarity [pmol/l]	Observations
1	35	125.00	5,411.3	Lower Marker
2	50	150.00	4,545.5	Ladder Peak
3	100	150.00	2,272.7	Ladder Peak
4	150	150.00	1,515.2	Ladder Peak
5	200	150.00	1,136.4	Ladder Peak
6	300	150.00	757.6	Ladder Peak
7	400	150.00	568.2	Ladder Peak
8	500	150.00	454.5	Ladder Peak
9	600	150.00	378.8	Ladder Peak
10	700	150.00	324.7	Ladder Peak
11	1,000	150.00	227.3	Ladder Peak
12	2,000	150.00	113.6	Ladder Peak
13	3,000	150.00	75.8	Ladder Peak
14	7,000	150.00	32.5	Ladder Peak
15	10,380	75.00	10.9	Upper Marker

Assay Class: High Sensitivity DNA Assay
 Data Path: C:\...ents and Settings\Bioanalyzer\2012-08-03\2012-08-03_004.xad

Created: 8/3/2012 2:10:49 PM
 Modified: 8/3/2012 2:52:46 PM

Electropherogram Summary Continued ...



Overall Results for sample 1 : C81-12x-Lib

Number of peaks found: 5 Corr. Area 1: 554.1
 Noise: 0.2

Peak table for sample 1 : C81-12x-Lib

Peak	Size [bp]	Conc. [pg/μl]	Molarity [pmol/l]	Observations
1	35	125.00	5,411.3	Lower Marker
2	127	19.43	232.5	
3	344	306.35	1,349.0	
4	352	50.95	219.1	
5	361	302.00	1,268.8	
6	475	5.21	16.6	
7	10,380	75.00	10.9	Upper Marker

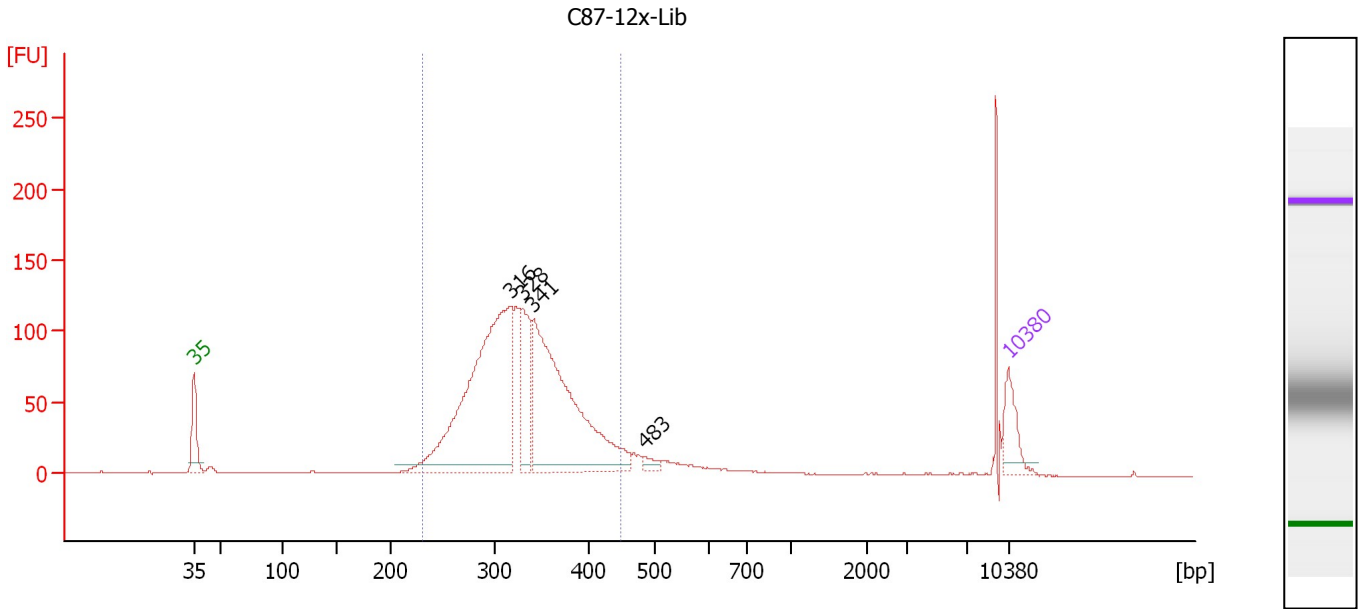
Region table for sample 1 : C81-12x-Lib

From [bp]	To [bp]	Average Size [bp]	Molarity [pmol/l]	Conc. [pg/μl]	Corr. Area	% of Total	Size distribution in CV [%]	Color
258	498	360	3,032.6	706.00	554.1	89	13.1	Blue

Assay Class: High Sensitivity DNA Assay
 Data Path: C:\...ents and Settings\Bioanalyzer\2012-08-03\2012-08-03_004.xad

Created: 8/3/2012 2:10:49 PM
 Modified: 8/3/2012 2:52:46 PM

Electropherogram Summary Continued ...



Overall Results for sample 2 : C87-12x-Lib

Number of peaks found: 4 Corr. Area 1: 1,609.2
 Noise: 0.2

Peak table for sample 2 : C87-12x-Lib

Peak	Size [bp]	Conc. [pg/μl]	Molarity [pmol/l]	Observations
1	35	125.00	5,411.3	Lower Marker
2	316	1,073.91	5,147.1	
3	328	235.38	1,087.2	
4	341	843.32	3,752.5	
5	483	20.61	64.7	
6	10,380	75.00	10.9	Upper Marker

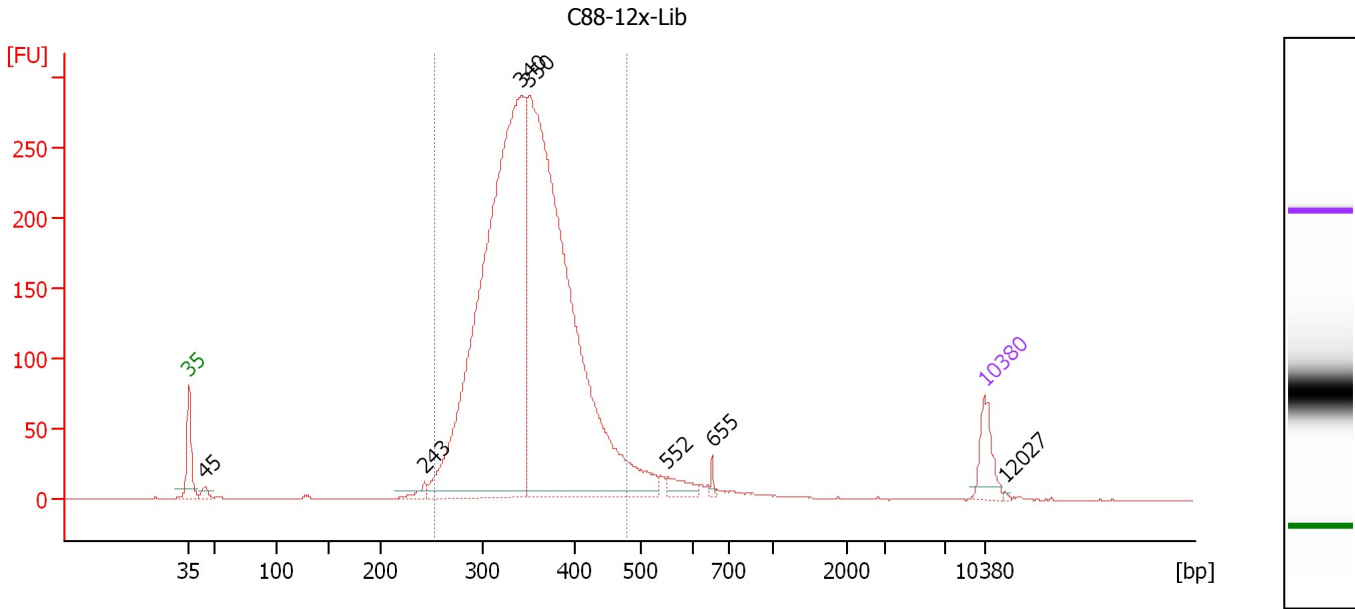
Region table for sample 2 : C87-12x-Lib

From [bp]	To [bp]	Average Size [bp]	Molarity [pmol/l]	Conc. [pg/μl]	Corr. Area	% of Total	Size distribution in CV [%]	Color
231	446	327	10,959.7	2,313.00	1,609.2	88	13.5	Blue

Assay Class: High Sensitivity DNA Assay
 Data Path: C:\...ents and Settings\Bioanalyzer\2012-08-03\2012-08-03_004.xad

Created: 8/3/2012 2:10:49 PM
 Modified: 8/3/2012 2:52:46 PM

Electropherogram Summary Continued ...



Overall Results for sample 3 : C88-12x-Lib

Number of peaks found: 7 Corr. Area 1: 3,527.6
 Noise: 0.2

Peak table for sample 3 : C88-12x-Lib

Peak	Size [bp]	Conc. [pg/μl]	Molarity [pmol/l]	Observations
1	35	125.00	5,411.3	Lower Marker
2	45	26.98	913.8	
3	243	26.68	166.7	
4	340	2,473.16	11,020.1	
5	350	2,450.88	10,613.2	
6	552	45.17	124.0	
7	655	11.16	25.8	
8	10,380	75.00	10.9	Upper Marker
9	12,027	0.00	0.0	

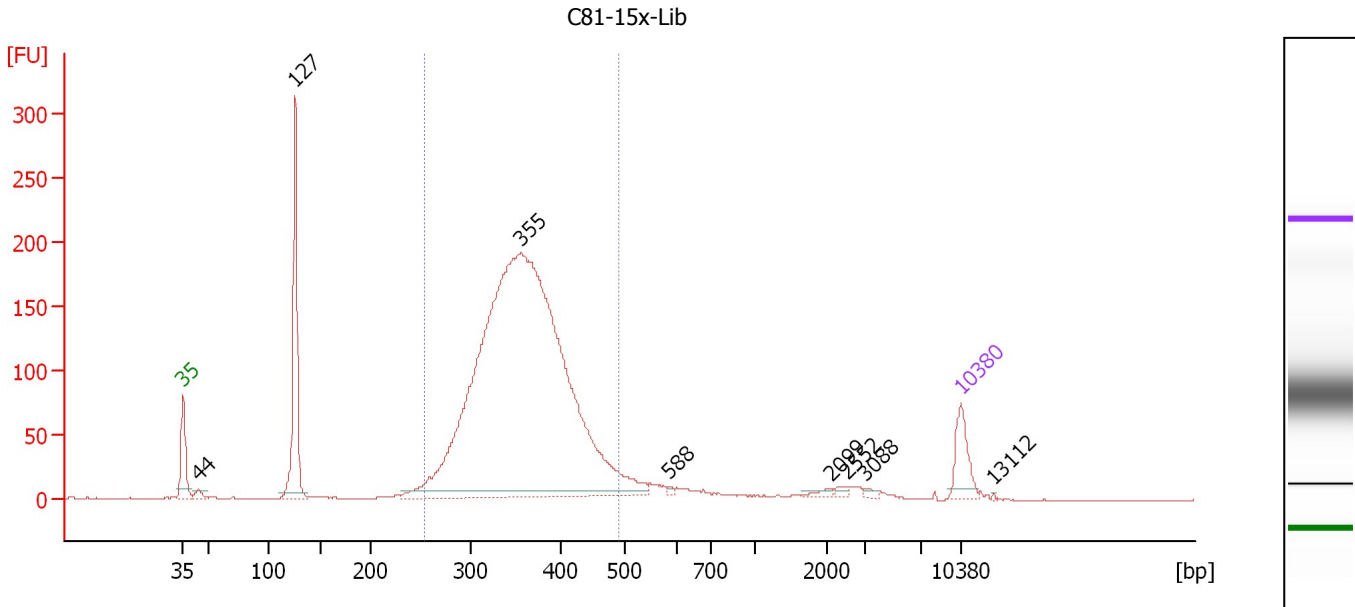
Region table for sample 3 : C88-12x-Lib

From [bp]	To [bp]	Average Size [bp]	Molarity [pmol/l]	Conc. [pg/μl]	Corr. Area	% of Total	Size distribution in CV [%]	Color
252	480	349	21,470.0	4,854.99	3,527.6	93	12.5	Blue

Assay Class: High Sensitivity DNA Assay
 Data Path: C:\...ents and Settings\Bioanalyzer\2012-08-03\2012-08-03_004.xad

Created: 8/3/2012 2:10:49 PM
 Modified: 8/3/2012 2:52:46 PM

Electropherogram Summary Continued ...



Overall Results for sample 4 : C81-15x-Lib

Number of peaks found: 8 Corr. Area 1: 2,413.2
 Noise: 0.2

Peak table for sample 4 : C81-15x-Lib

Peak	Size [bp]	Conc. [pg/μl]	Molarity [pmol/l]	Observations
1	35	125.00	5,411.3	Lower Marker
2	44	20.91	715.0	
3	127	483.25	5,787.2	
4	355	3,177.93	13,552.0	
5	588	5.12	13.2	
6	2,099	10.15	7.3	
7	2,552	10.49	6.2	
8	3,088	8.07	4.0	
9	10,380	75.00	10.9	Upper Marker
10	13,112	0.00	0.0	

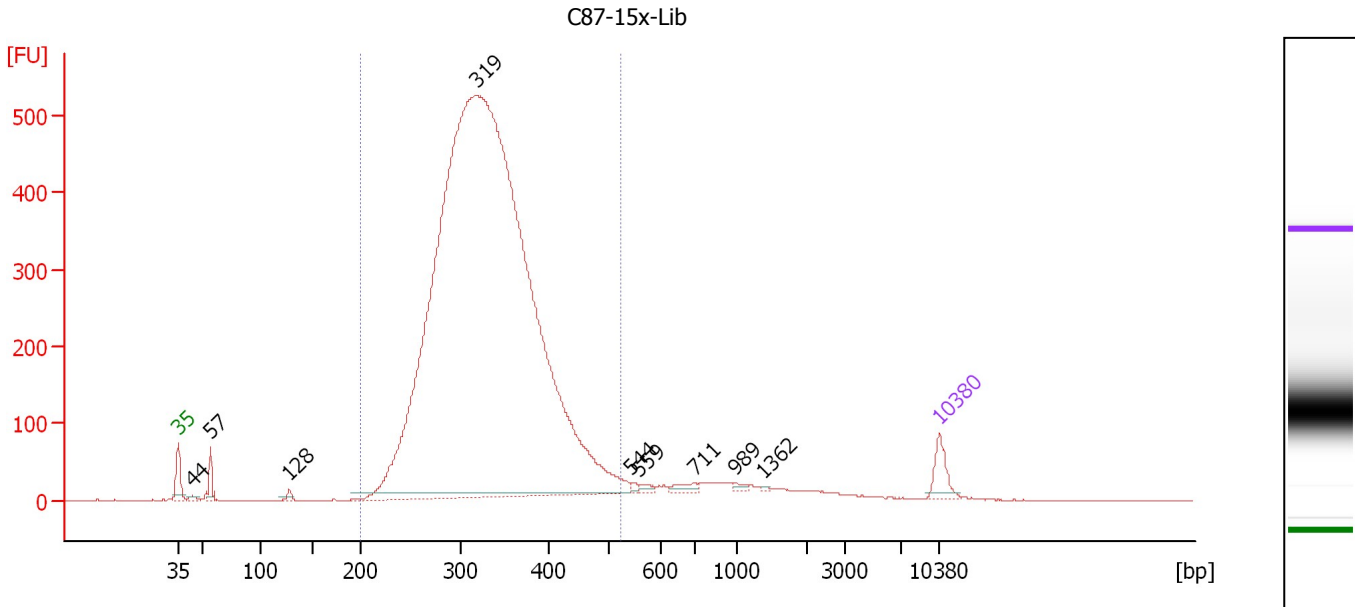
Region table for sample 4 : C81-15x-Lib

From [bp]	To [bp]	Average Size [bp]	Molarity [pmol/l]	Conc. [pg/μl]	Corr. Area	% of Total	Size distribution in CV [%]	Color
254	492	359	13,712.3	3,180.85	2,413.2	82	12.9	Blue

Assay Class: High Sensitivity DNA Assay
 Data Path: C:\...ents and Settings\Bioanalyzer\2012-08-03\2012-08-03_004.xad

Created: 8/3/2012 2:10:49 PM
 Modified: 8/3/2012 2:52:46 PM

Electropherogram Summary Continued ...



Overall Results for sample 5 : C87-15x-Lib

Number of peaks found: 9 Corr. Area 1: 7,818.1
 Noise: 0.2

Peak table for sample 5 : C87-15x-Lib

Peak	Size [bp]	Conc. [pg/μl]	Molarity [pmol/l]	Observations
1	35	125.00	5,411.3	Lower Marker
2	44	16.25	557.1	
3	57	66.97	1,782.5	
4	128	19.14	226.8	
5	319	9,799.11	46,562.9	
6	544	11.29	31.5	
7	559	21.54	58.3	
8	711	34.01	72.5	
9	989	13.66	20.9	
10	1,362	3.68	4.1	
11	10,380	75.00	10.9	Upper Marker

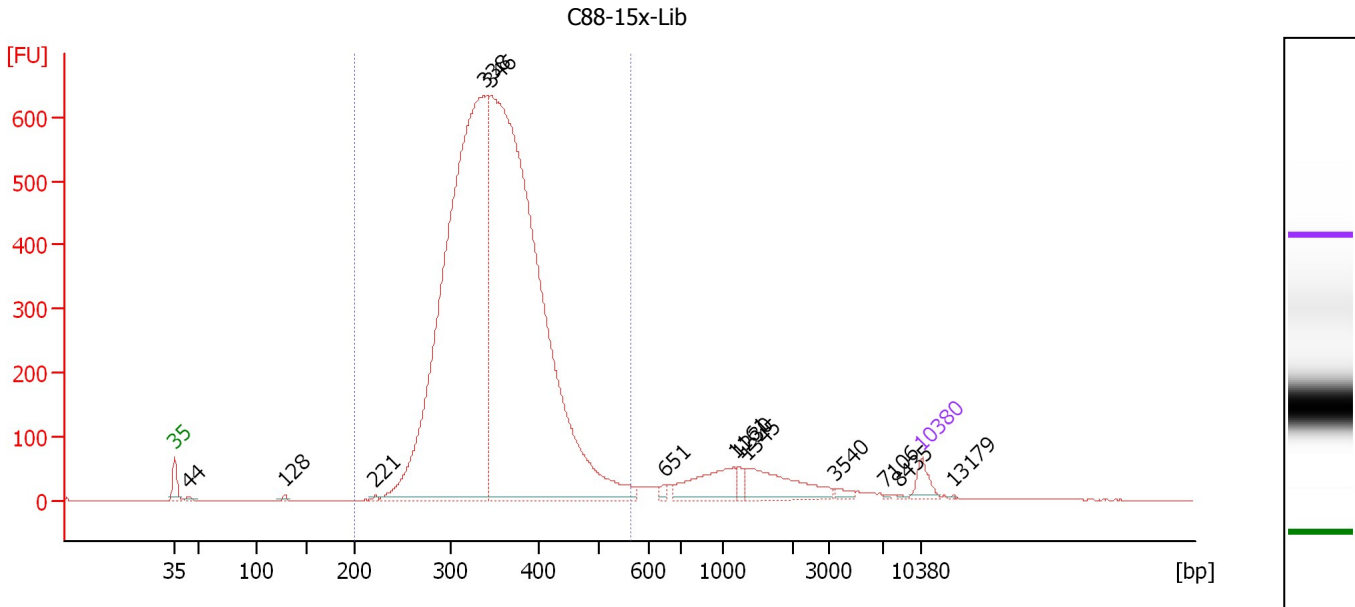
Region table for sample 5 : C87-15x-Lib

From [bp]	To [bp]	Average Size [bp]	Molarity [pmol/l]	Conc. [pg/μl]	Corr. Area	% of Total	Size distribution in CV [%]	Color
200	522	332	46,052.1	9,782.30	7,818.1	94	16.1	Blue

Assay Class: High Sensitivity DNA Assay
 Data Path: C:\...ents and Settings\Bioanalyzer\2012-08-03\2012-08-03_004.xad

Created: 8/3/2012 2:10:49 PM
 Modified: 8/3/2012 2:52:46 PM

Electropherogram Summary Continued ...



Overall Results for sample 6 : C88-15x-Lib

Number of peaks found: 13 Corr. Area 1: 9,001.9
 Noise: 0.2

Peak table for sample 6 : C88-15x-Lib

Peak	Size [bp]	Conc. [pg/μl]	Molarity [pmol/l]	Observations
1	35	125.00	5,411.3	Lower Marker
2	44	22.81	784.9	
3	128	15.09	178.0	
4	221	12.67	86.8	
5	338	5,925.54	26,532.4	
6	346	7,001.57	30,678.1	
7	651	23.78	55.4	
8	1,161	262.84	343.1	
9	1,230	45.77	56.4	
10	1,345	303.48	341.9	
11	3,540	26.74	11.4	
12	7,106	4.91	1.0	
13	8,435	5.72	1.0	
14	10,380	75.00	10.9	Upper Marker
15	13,179	0.00	0.0	

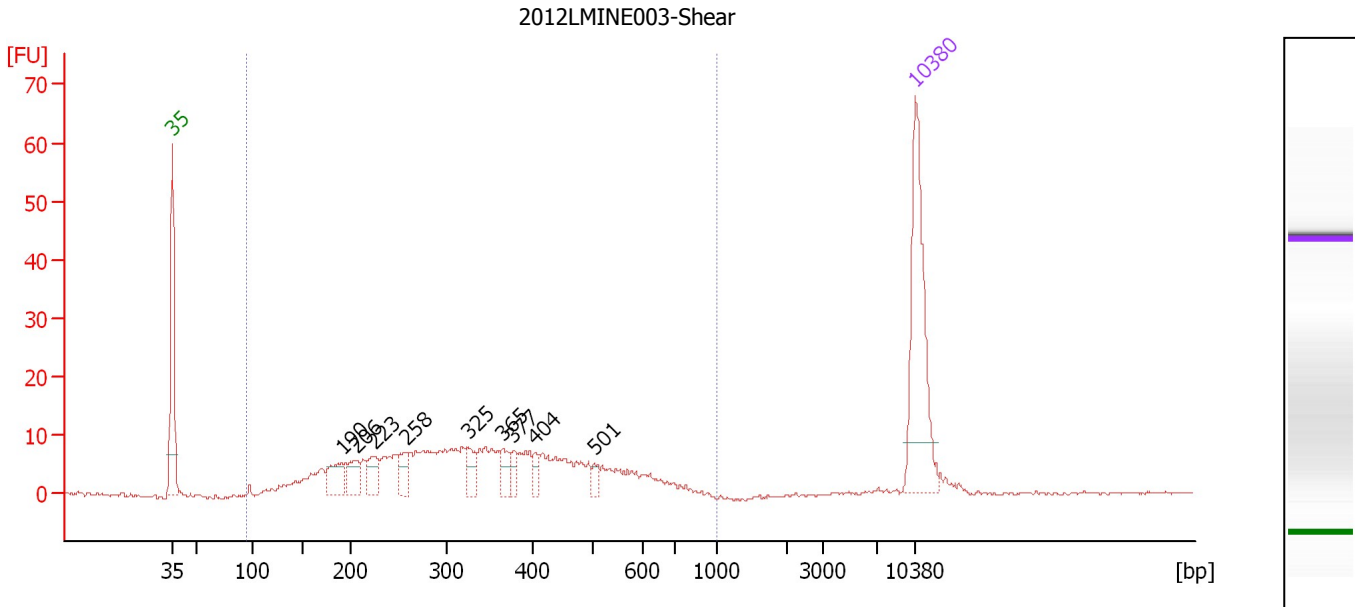
Region table for sample 6 : C88-15x-Lib

From [bp]	To [bp]	Average Size [bp]	Molarity [pmol/l]	Conc. [pg/μl]	Corr. Area	% of Total	Size distribution in CV [%]	Color
200	565	353	56,842.5	12,889.73	9,001.9	92	14.8	Blue

Assay Class: High Sensitivity DNA Assay
 Data Path: C:\...ents and Settings\Bioanalyzer\2012-08-03\2012-08-03_004.xad

Created: 8/3/2012 2:10:49 PM
 Modified: 8/3/2012 2:52:46 PM

Electropherogram Summary Continued ...



Overall Results for sample 7 : 2012LMINE003-Shear

Number of peaks found: 9 Corr. Area 1: 290.8
 Noise: 0.2

Peak table for sample 7 : 2012LMINE003-Shear

Peak	Size [bp]	Conc. [pg/μl]	Molarity [pmol/l]	Observations
1	35	125.00	5,411.3	Lower Marker
2	190	23.60	187.9	
3	206	19.95	146.9	
4	223	17.94	121.6	
5	258	16.88	99.2	
6	325	14.82	69.1	
7	365	12.41	51.5	
8	377	9.29	37.3	
9	404	7.75	29.1	
10	501	6.07	18.3	
11	10,380	75.00	10.9	Upper Marker

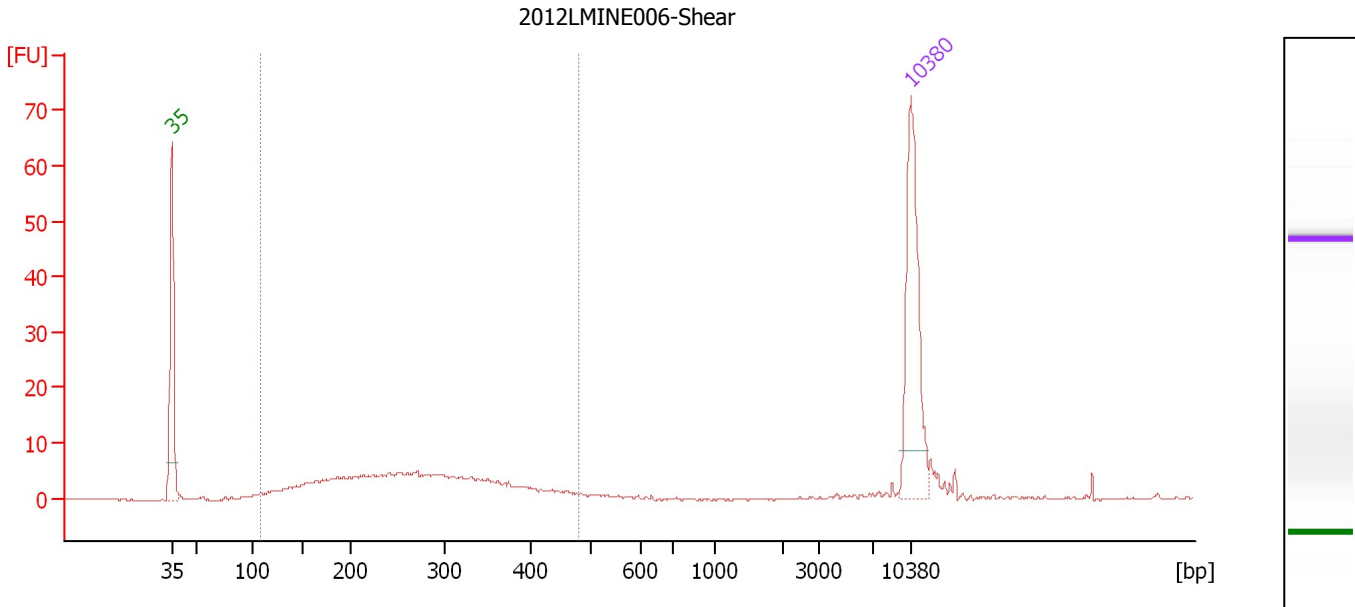
Region table for sample 7 : 2012LMINE003-Shear

From [bp]	To [bp]	Average Size [bp]	Molarity [pmol/l]	Conc. [pg/μl]	Corr. Area	% of Total	Size distribution in CV [%]	Color
95	1,000	347	2,265.1	412.86	290.8	98	37.9	Blue

Assay Class: High Sensitivity DNA Assay
 Data Path: C:\...ents and Settings\Bioanalyzer\2012-08-03\2012-08-03_004.xad

Created: 8/3/2012 2:10:49 PM
 Modified: 8/3/2012 2:52:46 PM

Electropherogram Summary Continued ...



Overall Results for sample 8 : 2012LMINE006-Shear

Number of peaks found: 0 Corr. Area 1: 134.9
 Noise: 0.1

Peak table for sample 8 : 2012LMINE006-Shear

Peak	Size [bp]	Conc. [pg/μl]	Molarity [pmol/l]	Observations
1	35	125.00	5,411.3	Lower Marker
2	10,380	75.00	10.9	Upper Marker

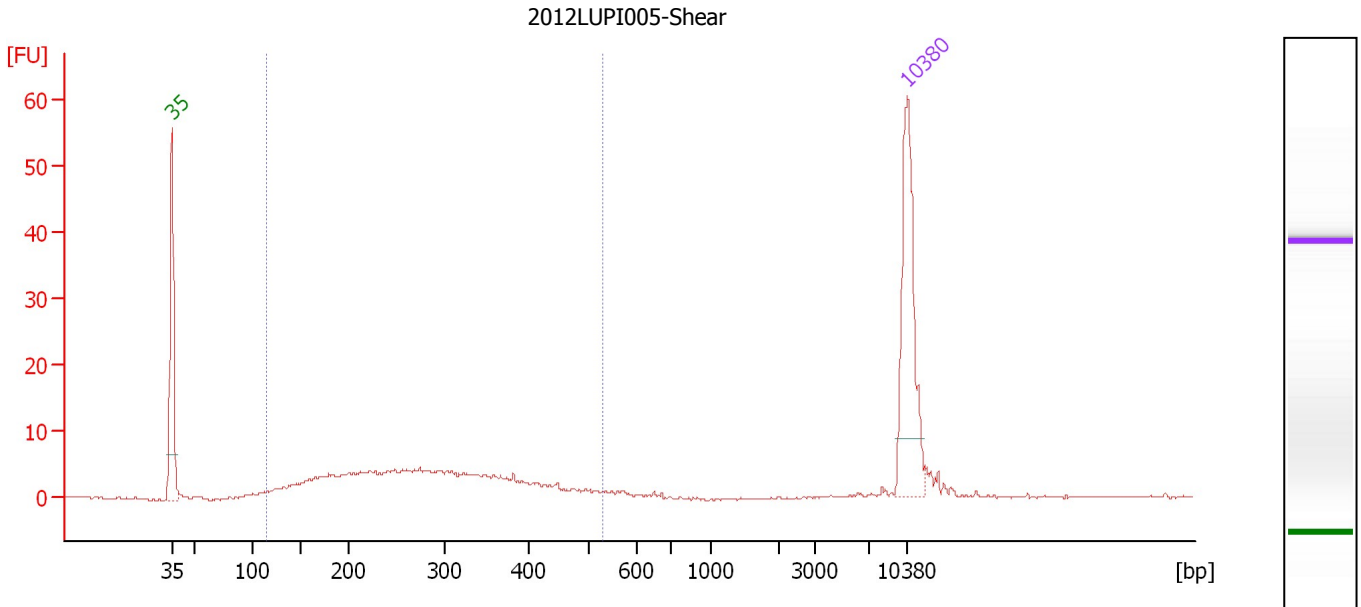
Region table for sample 8 : 2012LMINE006-Shear

From [bp]	To [bp]	Average Size [bp]	Molarity [pmol/l]	Conc. [pg/μl]	Corr. Area	% of Total	Size distribution in CV [%]	Color
108	480	267	1,332.1	200.91	134.9	90	30.7	Blue

Assay Class: High Sensitivity DNA Assay
 Data Path: C:\...ents and Settings\Bioanalyzer\2012-08-03\2012-08-03_004.xad

Created: 8/3/2012 2:10:49 PM
 Modified: 8/3/2012 2:52:46 PM

Electropherogram Summary Continued ...



Overall Results for sample 9 : 2012LUPI005-Shear

Number of peaks found: 0 Corr. Area 1: 133.9
 Noise: 0.1

Peak table for sample 9 : 2012LUPI005-Shear

Peak	Size [bp]	Conc. [pg/μl]	Molarity [pmol/l]	Observations
1	35	125.00	5,411.3	Lower Marker
2	10,380	75.00	10.9	Upper Marker

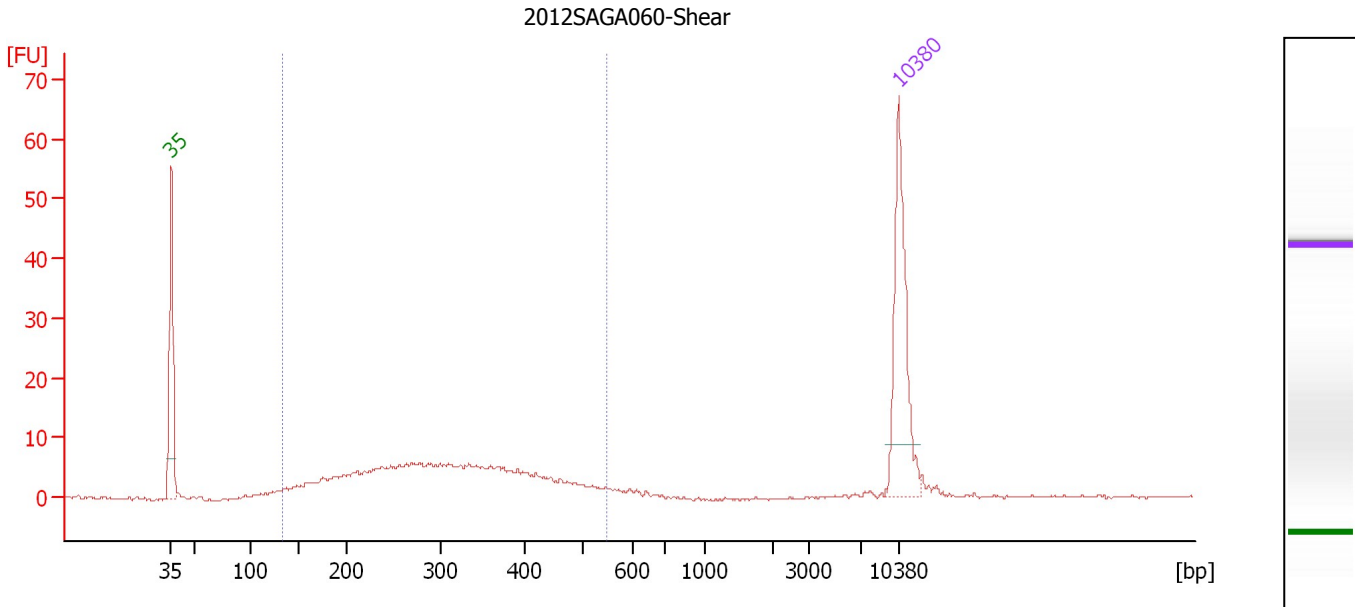
Region table for sample 9 : 2012LUPI005-Shear

From [bp]	To [bp]	Average Size [bp]	Molarity [pmol/l]	Conc. [pg/μl]	Corr. Area	% of Total	Size distribution in CV [%]	Color
114	528	281	1,484.1	232.35	133.9	90	32.4	Blue

Assay Class: High Sensitivity DNA Assay
 Data Path: C:\...ents and Settings\Bioanalyzer\2012-08-03\2012-08-03_004.xad

Created: 8/3/2012 2:10:49 PM
 Modified: 8/3/2012 2:52:46 PM

Electropherogram Summary Continued ...



Overall Results for sample 10 : 2012SAGA060-Shear

Number of peaks found: 0 Corr. Area 1: 176.0
 Noise: 0.1

Peak table for sample 10 : 2012SAGA060-Shear

Peak	Size [bp]	Conc. [pg/μl]	Molarity [pmol/l]	Observations
1	35	125.00	5,411.3	Lower Marker
2	10,380	75.00	10.9	Upper Marker

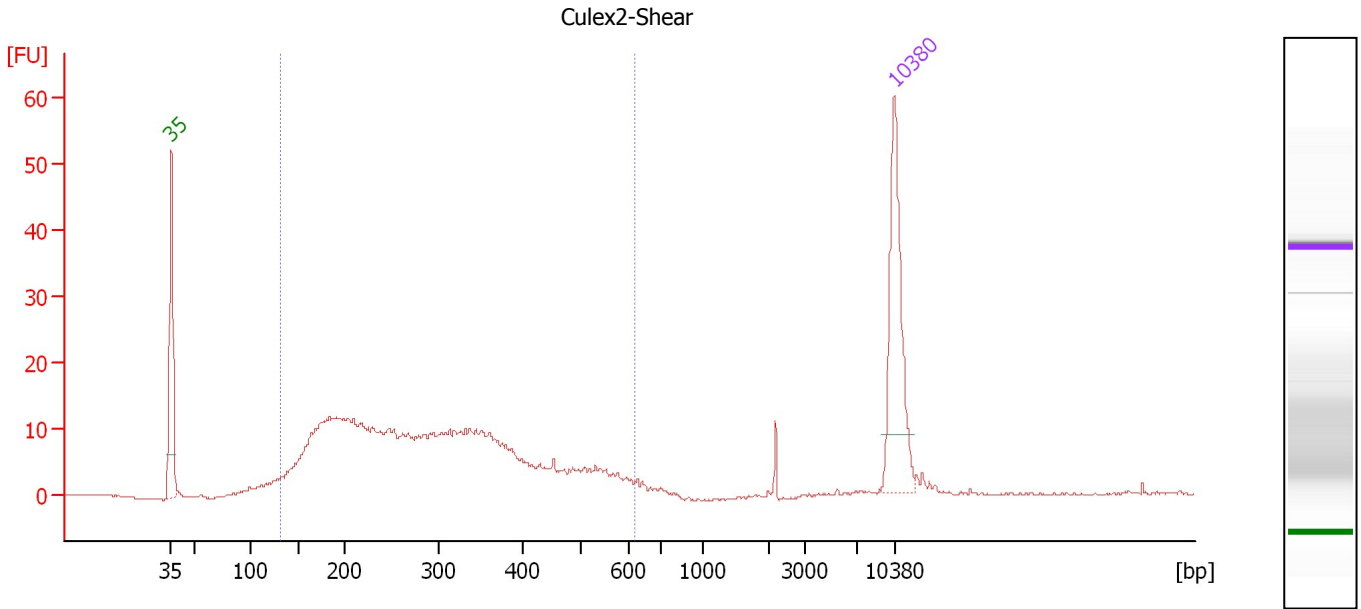
Region table for sample 10 : 2012SAGA060-Shear

From [bp]	To [bp]	Average Size [bp]	Molarity [pmol/l]	Conc. [pg/μl]	Corr. Area	% of Total	Size distribution in CV [%]	Color
132	549	309	1,659.7	290.73	176.0	92	30.4	Blue

Assay Class: High Sensitivity DNA Assay
 Data Path: C:\...ents and Settings\Bioanalyzer\2012-08-03\2012-08-03_004.xad

Created: 8/3/2012 2:10:49 PM
 Modified: 8/3/2012 2:52:46 PM

Electropherogram Summary Continued ...



Overall Results for sample 11 : Culex2-Shear

Number of peaks found: 0 Corr. Area 1: 360.7
 Noise: 0.1

Peak table for sample 11 : Culex2-Shear

Peak	Size [bp]	Conc. [pg/μl]	Molarity [pmol/l]	Observations
1	35	125.00	5,411.3	Lower Marker
2	10,380	75.00	10.9	Upper Marker

Region table for sample 11 : Culex2-Shear

From [bp]	To [bp]	Average Size [bp]	Molarity [pmol/l]	Conc. [pg/μl]	Corr. Area	% of Total	Size distribution in CV [%]	Color
132	615	298	3,999.8	652.11	360.7	94	36.3	Blue

Assay Class: High Sensitivity DNA Assay
Data Path: C:\...ents and Settings\Bioanalyzer\2012-08-03\2012-08-03_004.xad

Created: 8/3/2012 2:10:49 PM
Modified: 8/3/2012 2:52:46 PM

Gel Image