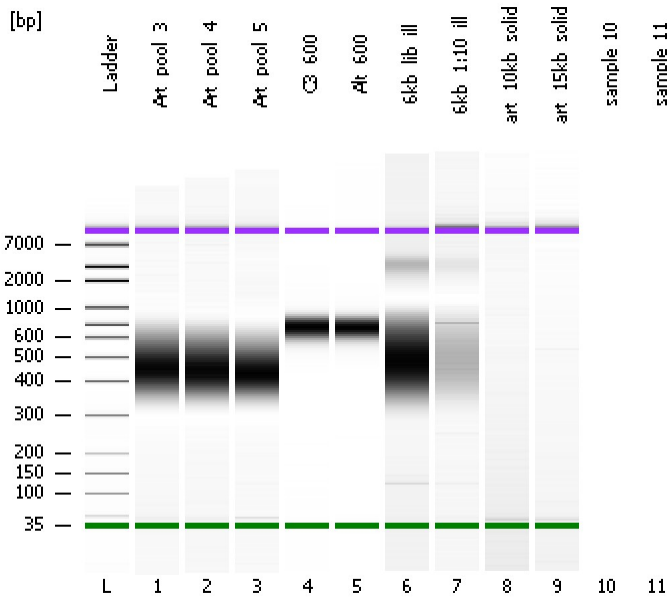


Assay Class: High Sensitivity DNA Assay  
 Data Path: C:\...ents and Settings\Bioanalyzer\2012-08-06\2012-08-06\_001.xad

Created: 8/6/2012 9:30:05 AM  
 Modified: 8/6/2012 10:05:48 AM

**Electrophoresis File Run Summary**



Instrument Information:

Instrument Name: DE13701086      Firmware: C.01.069  
 Serial#: DE13701086      Type: G2938B

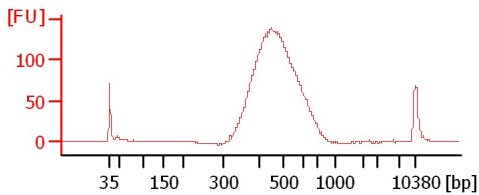
Assay Information:

Assay Origin Path: C:\Program Files\Agilent\2100 bioanalyzer\2100 expert\assays\dsDNA\High Sensitivity DNA.xsy  
 Assay Class: High Sensitivity DNA Assay  
 Version: 1.03  
 Assay Comments: Copyright © 2003-2010 Agilent Technologies

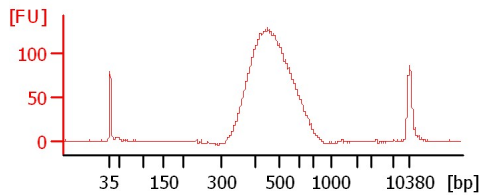
Chip Information:

Chip Lot #:      Reagent Kit Lot #:  
 Chip Comments:

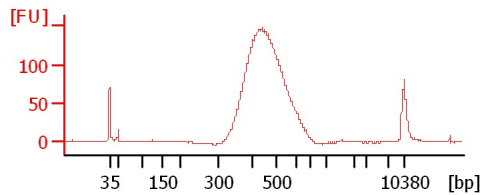
**Art\_pool\_3**



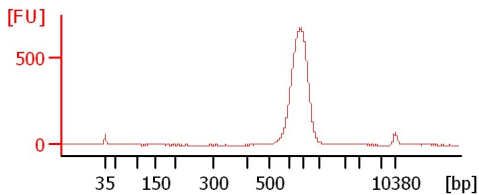
**Art\_pool\_4**



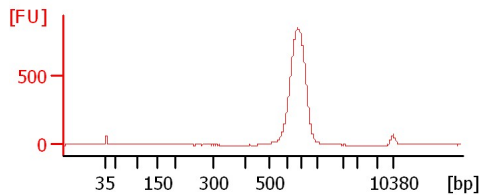
**Art\_pool\_5**



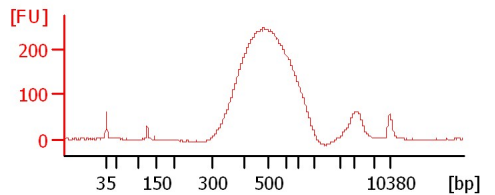
**C3\_600**



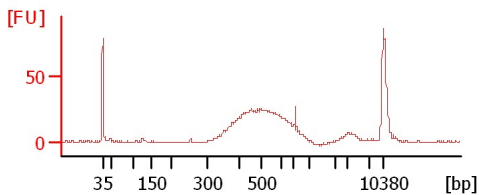
**Alt\_600**



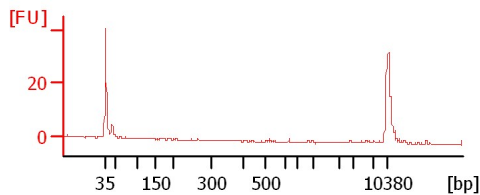
**6kb\_lib\_ill**



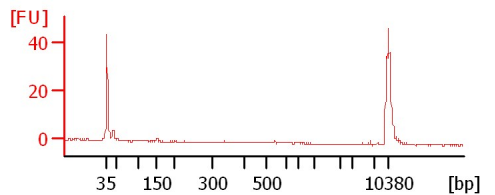
**6kb\_1:10\_ill**



**art\_10kb\_solid**



**art\_15kb\_solid**



Assay Class: High Sensitivity DNA Assay  
 Data Path: C:\...ents and Settings\Bioanalyzer\2012-08-06\2012-08-06\_001.xad

Created: 8/6/2012 9:30:05 AM  
 Modified: 8/6/2012 10:05:48 AM

**Electrophoresis File Run Summary (Chip Summary)**

Sample Name	Sample Comment	Rest. Digest	Status	Observation	Result Label	Result Color
Art_pool_3		<input type="checkbox"/>	✓			
Art_pool_4		<input type="checkbox"/>	✓			
Art_pool_5		<input type="checkbox"/>	✓			
C3_600		<input type="checkbox"/>	✓			
Alt_600		<input type="checkbox"/>	✓			
6kb_lib_ill		<input type="checkbox"/>	✓			
6kb_1:10_ill		<input type="checkbox"/>	✓			
art_10kb_solid		<input type="checkbox"/>	✓			
art_15kb_solid		<input type="checkbox"/>	✓			
sample 10		<input type="checkbox"/>				
sample 11		<input type="checkbox"/>				
Ladder		<input type="checkbox"/>	✓			

**Chip Lot #**

**Reagent Kit Lot #**

**Chip Comments :**

Assay Class: High Sensitivity DNA Assay  
 Data Path: C:\...ents and Settings\Bioanalyzer\2012-08-06\2012-08-06\_001.xad

Created: 8/6/2012 9:30:05 AM  
 Modified: 8/6/2012 10:05:48 AM

**Electrophoresis Assay Details**

**General Analysis Settings**

Number of Available Sample and Ladder Wells (Max.) : 12  
 Minimum Visible Range [s] : 32  
 Maximum Visible Range [s] : 138  
 Start Analysis Time Range [s] : 33  
 End Analysis Time Range [s] : 137.5  
 Ladder Concentration [pg/μl] : 1950  
 Uses Standard Area for Ladder Fragments  
 Lower Marker Concentration [pg/μl] : 125  
 Upper Marker Concentration [pg/μl] : 75  
 Used Upper Marker for Quantitation  
 Standard Curve Fit is Point to Point  
 Show Data Aligned to Lower and Upper Marker

**Integrator Settings**

Integration Start Time [s] : 33.05  
 Integration End Time [s] : 137  
 Slope Threshold : 0.8  
 Height Threshold [FU] : 5  
 Area Threshold : 0.1  
 Width Threshold [s] : 0.6  
 Baseline Plateau [s] : 0.5

**Filter Settings**

Filter Width [s] : 0.5  
 Polynomial Order : 4

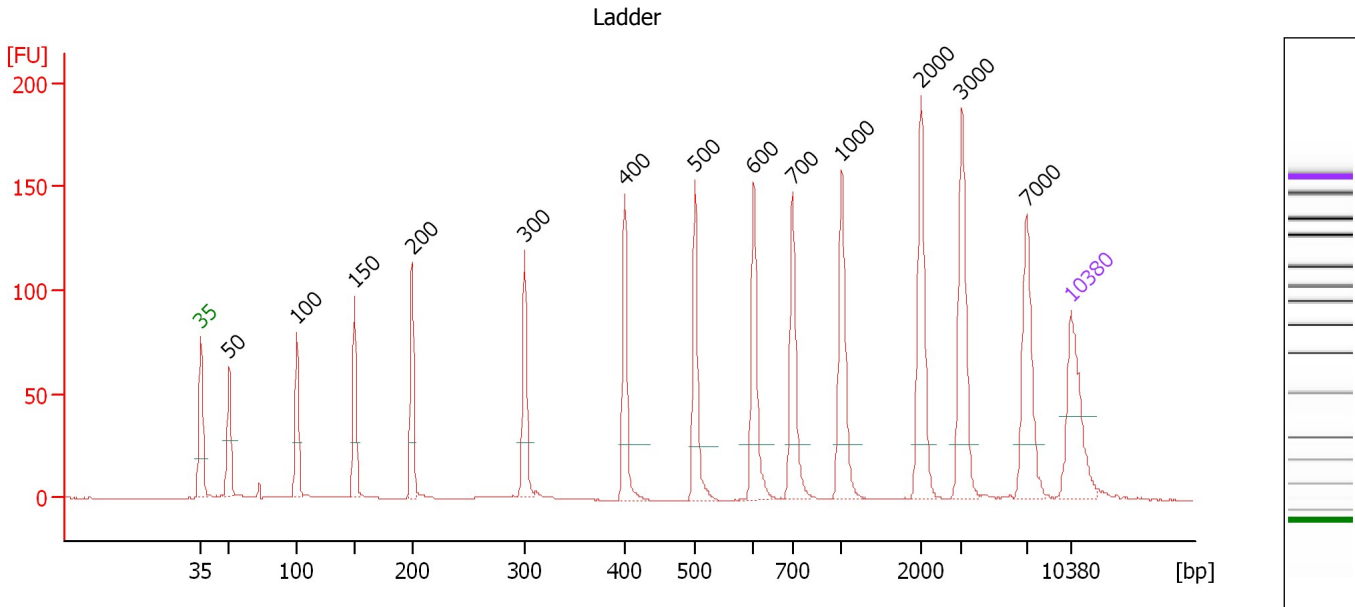
**Ladder**

Ladder Peak	Size	Area
1	35	160
2	50	210
3	100	208
4	150	221
5	200	242
6	300	270
7	400	305
8	500	306
9	600	336
10	700	321
11	1000	366
12	2000	413
13	3000	411
14	7000	400
15	10380	214

Assay Class: High Sensitivity DNA Assay  
 Data Path: C:\...ents and Settings\Bioanalyzer\2012-08-06\2012-08-06\_001.xad

Created: 8/6/2012 9:30:05 AM  
 Modified: 8/6/2012 10:05:48 AM

**Electropherogram Summary**



**Overall Results for Ladder**

Noise: 0.2

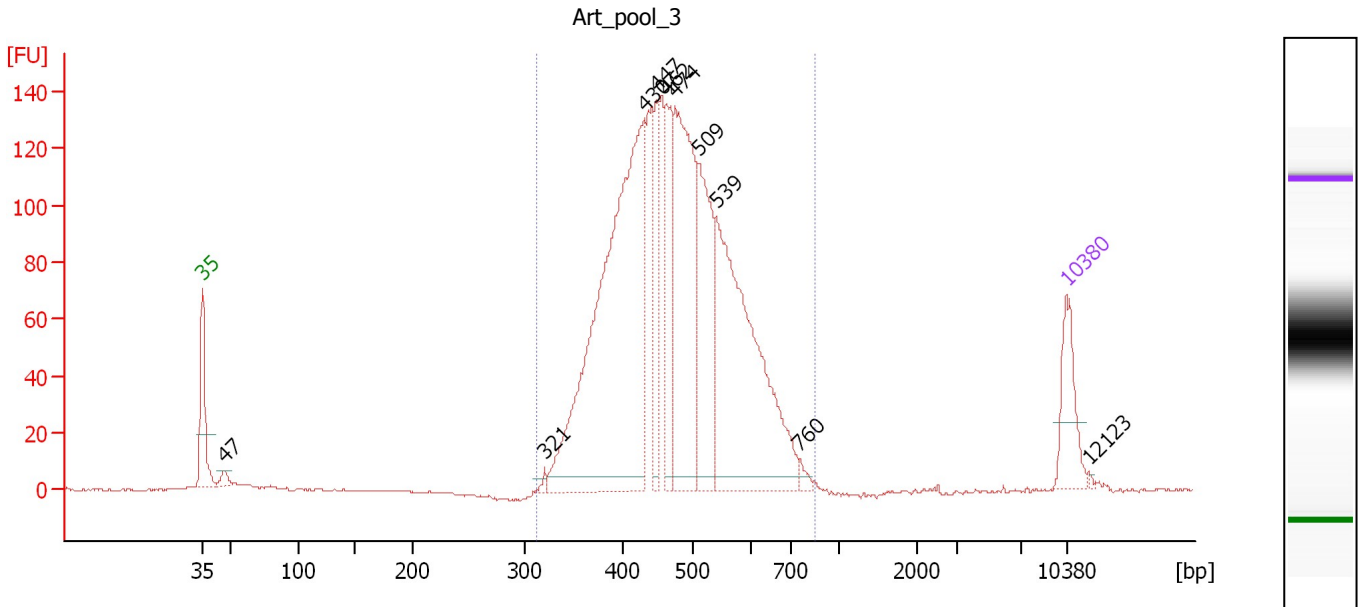
**Peak table for Ladder**

Peak	Size [bp]	Conc. [pg/µl]	Molarity [pmol/l]	Observations
1	35	125.00	5,411.3	Lower Marker
2	50	150.00	4,545.5	Ladder Peak
3	100	150.00	2,272.7	Ladder Peak
4	150	150.00	1,515.2	Ladder Peak
5	200	150.00	1,136.4	Ladder Peak
6	300	150.00	757.6	Ladder Peak
7	400	150.00	568.2	Ladder Peak
8	500	150.00	454.5	Ladder Peak
9	600	150.00	378.8	Ladder Peak
10	700	150.00	324.7	Ladder Peak
11	1,000	150.00	227.3	Ladder Peak
12	2,000	150.00	113.6	Ladder Peak
13	3,000	150.00	75.8	Ladder Peak
14	7,000	150.00	32.5	Ladder Peak
15	10,380	75.00	10.9	Upper Marker

Assay Class: High Sensitivity DNA Assay  
 Data Path: C:\...ents and Settings\Bioanalyzer\2012-08-06\2012-08-06\_001.xad

Created: 8/6/2012 9:30:05 AM  
 Modified: 8/6/2012 10:05:48 AM

**Electropherogram Summary Continued ...**



**Overall Results for sample 1 : Art\_pool\_3**

Number of peaks found: 10      Corr. Area 1: 2,069.2  
 Noise: 0.2

**Peak table for sample 1 : Art\_pool\_3**

Peak	Size [bp]	Conc. [pg/μl]	Molarity [pmol/l]	Observations
1	35	125.00	5,411.3	Lower Marker
2	47	17.64	572.5	
3	321	7.56	35.7	
4	430	955.63	3,370.0	
5	447	135.68	459.7	
6	462	153.90	505.1	
7	474	418.86	1,339.1	
8	509	239.66	713.4	
9	539	571.62	1,606.2	
10	760	11.40	22.7	
11	10,380	75.00	10.9	Upper Marker
12	12,123	0.00	0.0	

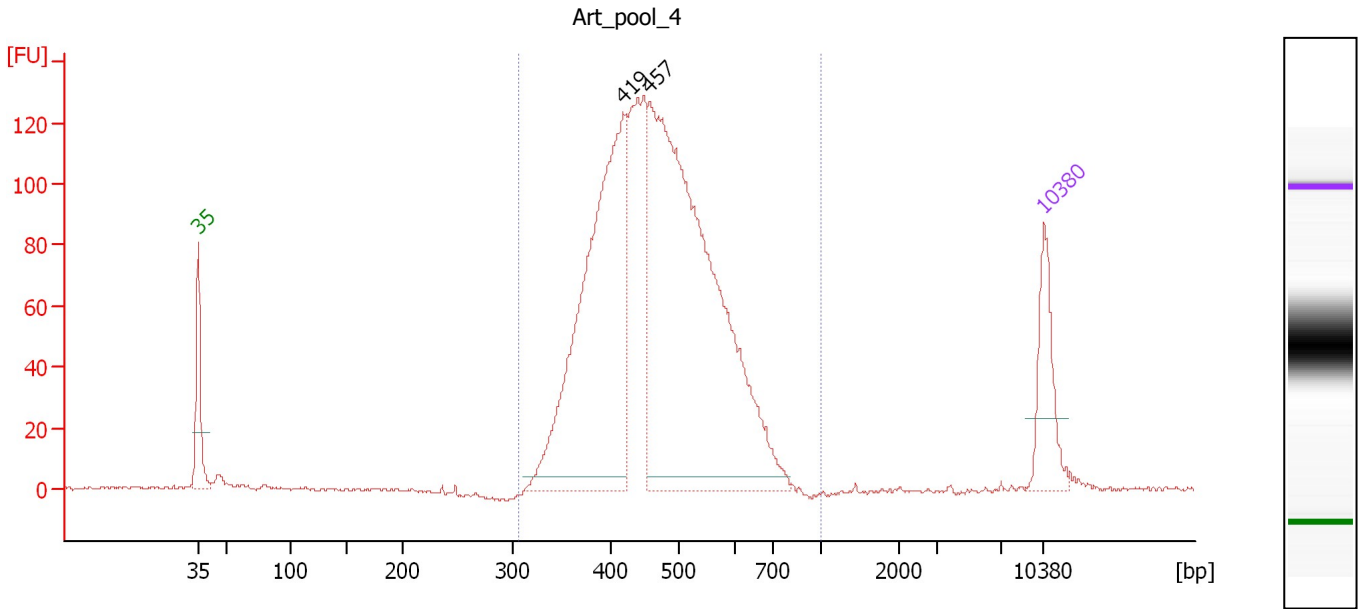
**Region table for sample 1 : Art\_pool\_3**

From [bp]	To [bp]	Average Size [bp]	Molarity [pmol/l]	Conc. [pg/μl]	Corr. Area	% of Total	Size distribution in CV [%]	Color
312	849	478	9,080.0	2,754.32	2,069.2	98	17.6	Blue

Assay Class: High Sensitivity DNA Assay  
 Data Path: C:\...ents and Settings\Bioanalyzer\2012-08-06\2012-08-06\_001.xad

Created: 8/6/2012 9:30:05 AM  
 Modified: 8/6/2012 10:05:48 AM

**Electropherogram Summary Continued ...**



**Overall Results for sample 2 : Art\_pool\_4**

Number of peaks found: 2                      Corr. Area 1: 1,914.5  
 Noise: 0.6

**Peak table for sample 2 : Art\_pool\_4**

Peak	Size [bp]	Conc. [pg/μl]	Molarity [pmol/l]	Observations
1	35	125.00	5,411.3	Lower Marker
2	419	671.35	2,427.5	
3	457	1,016.32	3,367.9	
4	10,380	75.00	10.9	Upper Marker

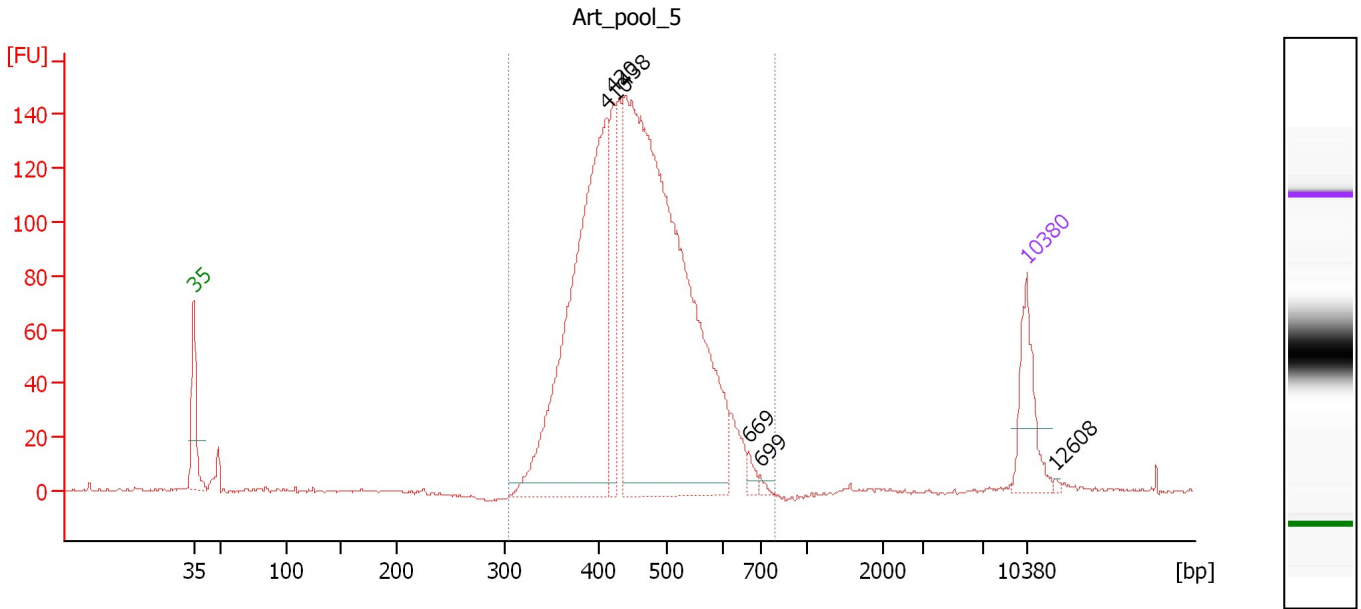
**Region table for sample 2 : Art\_pool\_4**

From [bp]	To [bp]	Average Size [bp]	Molarity [pmol/l]	Conc. [pg/μl]	Corr. Area	% of Total	Size distribution in CV [%]	Color
306	1,000	470	6,367.7	1,905.00	1,914.5	98	17.1	Blue

Assay Class: High Sensitivity DNA Assay  
 Data Path: C:\...ents and Settings\Bioanalyzer\2012-08-06\2012-08-06\_001.xad

Created: 8/6/2012 9:30:05 AM  
 Modified: 8/6/2012 10:05:48 AM

**Electropherogram Summary Continued ...**



**Overall Results for sample 3 : Art\_pool\_5**

Number of peaks found: 6                      Corr. Area 1: 2,014.9  
 Noise: 0.5

**Peak table for sample 3 : Art\_pool\_5**

Peak	Size [bp]	Conc. [pg/μl]	Molarity [pmol/l]	Observations
1	35	125.00	5,411.3	Lower Marker
2	410	752.86	2,779.7	
3	420	123.08	444.1	
4	438	1,244.47	4,304.2	
5	669	13.09	29.6	
6	699	5.44	11.8	
7	10,380	75.00	10.9	Upper Marker
8	12,608	0.00	0.0	

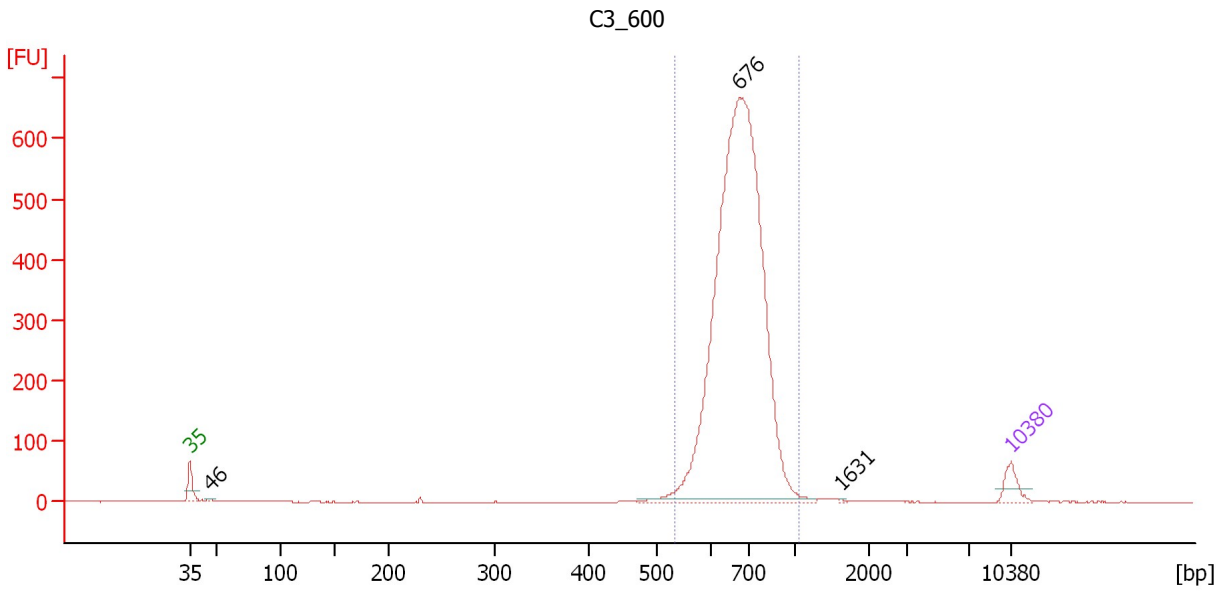
**Region table for sample 3 : Art\_pool\_5**

From [bp]	To [bp]	Average Size [bp]	Molarity [pmol/l]	Conc. [pg/μl]	Corr. Area	% of Total	Size distribution in CV [%]	Color
305	787	458	7,496.5	2,196.74	2,014.9	98	15.9	Blue

Assay Class: High Sensitivity DNA Assay  
 Data Path: C:\...ents and Settings\Bioanalyzer\2012-08-06\2012-08-06\_001.xad

Created: 8/6/2012 9:30:05 AM  
 Modified: 8/6/2012 10:05:48 AM

**Electropherogram Summary Continued ...**



**Overall Results for sample 4 : C3\_600**

Number of peaks found: 3                      Corr. Area 1: 3,599.2  
 Noise: 0.3

**Peak table for sample 4 : C3\_600**

Peak	Size [bp]	Conc. [pg/μl]	Molarity [pmol/l]	Observations
1	35	125.00	5,411.3	Lower Marker
2	46	13.68	446.9	
3	676	4,529.67	10,150.2	
4	1,631	3.12	2.9	
5	10,380	75.00	10.9	Upper Marker

**Region table for sample 4 : C3\_600**

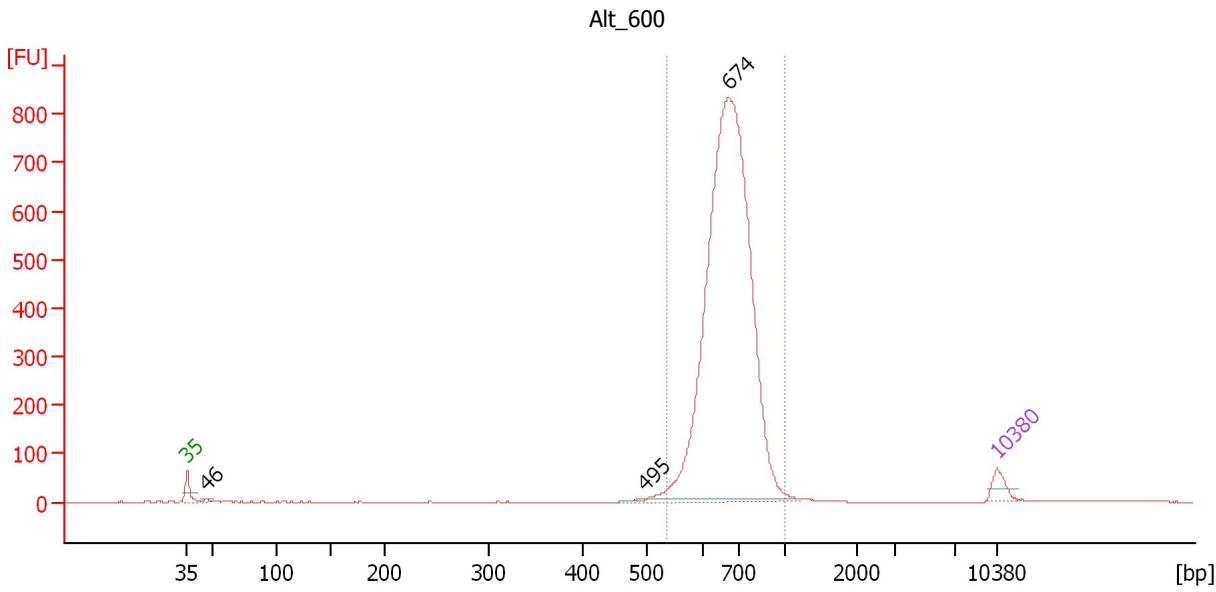
From [bp]	To [bp]	Average Size [bp]	Molarity [pmol/l]	Conc. [pg/μl]	Corr. Area	% of Total	Size distribution in CV [%]	Color
534	1,057	691	9,778.3	4,405.76	3,599.2	97	11.8	Blue



Assay Class: High Sensitivity DNA Assay  
 Data Path: C:\...ents and Settings\Bioanalyzer\2012-08-06\2012-08-06\_001.xad

Created: 8/6/2012 9:30:05 AM  
 Modified: 8/6/2012 10:05:48 AM

**Electropherogram Summary Continued ...**



**Overall Results for sample 5 : Alt\_600**

Number of peaks found: 3                      Corr. Area 1: 4,262.8  
 Noise: 0.3

**Peak table for sample 5 : Alt\_600**

Peak	Size [bp]	Conc. [pg/μl]	Molarity [pmol/l]	Observations
1	35	125.00	5,411.3	Lower Marker
2	46	18.46	608.7	
3	495	18.79	57.5	
4	674	5,479.17	12,321.1	
5	10,380	75.00	10.9	Upper Marker

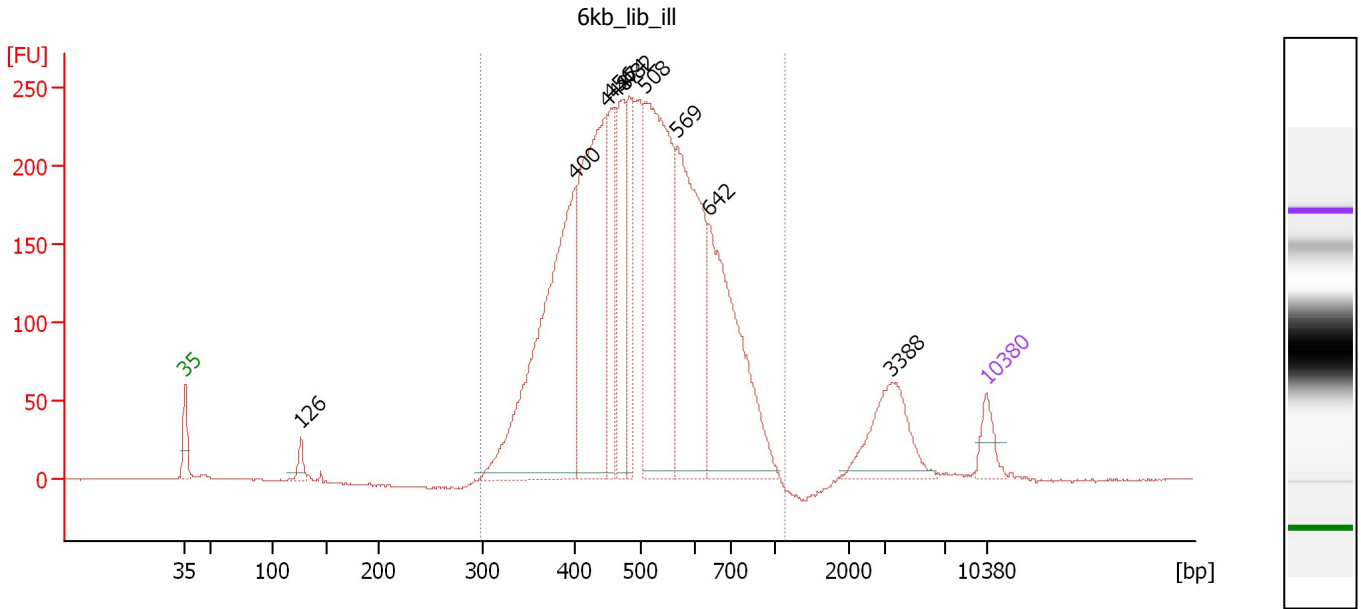
**Region table for sample 5 : Alt\_600**

From [bp]	To [bp]	Average Size [bp]	Molarity [pmol/l]	Conc. [pg/μl]	Corr. Area	% of Total	Size distribution in CV [%]	Color
534	1,000	688	11,981.4	5,376.35	4,262.8	97	11.3	Blue

Assay Class: High Sensitivity DNA Assay  
 Data Path: C:\...ents and Settings\Bioanalyzer\2012-08-06\2012-08-06\_001.xad

Created: 8/6/2012 9:30:05 AM  
 Modified: 8/6/2012 10:05:48 AM

**Electropherogram Summary Continued ...**



**Overall Results for sample 6 : 6kb lib ill**

Number of peaks found: 10                      Corr. Area 1: 4,642.0  
 Noise: 0.3

**Peak table for sample 6 : 6kb lib ill**

Peak	Size [bp]	Conc. [pg/μl]	Molarity [pmol/l]	Observations
1	35	125.00	5,411.3	Lower Marker
2	126	63.63	766.7	
3	400	1,500.05	5,683.3	
4	448	1,247.62	4,215.7	
5	456	378.65	1,258.7	
6	474	428.02	1,368.4	
7	482	334.00	1,049.6	
8	508	1,294.27	3,859.0	
9	569	993.21	2,643.0	
10	642	955.99	2,257.6	
11	3,388	294.03	131.5	
12	10,380	75.00	10.9	Upper Marker

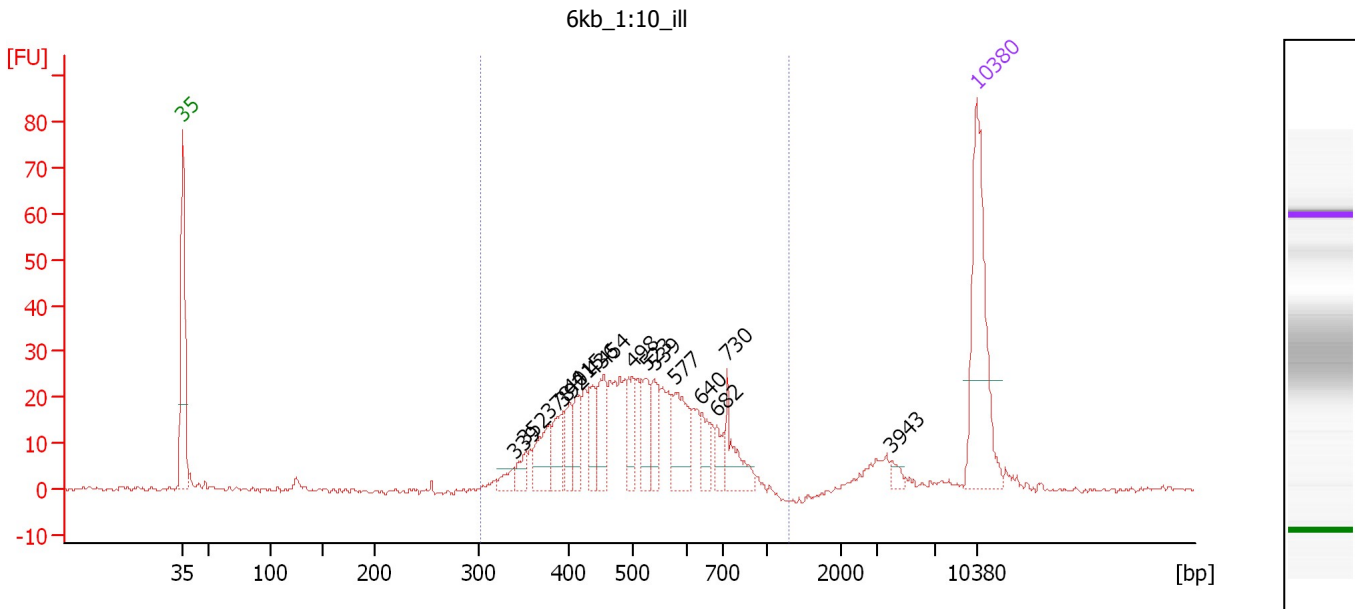
**Region table for sample 6 : 6kb lib ill**

From [bp]	To [bp]	Average Size [bp]	Molarity [pmol/l]	Conc. [pg/μl]	Corr. Area	% of Total	Size distribution in CV [%]	Color
299	1,123	513	23,987.7	7,604.74	4,642.0	94	23.3	Blue

Assay Class: High Sensitivity DNA Assay  
 Data Path: C:\...ents and Settings\Bioanalyzer\2012-08-06\2012-08-06\_001.xad

Created: 8/6/2012 9:30:05 AM  
 Modified: 8/6/2012 10:05:48 AM

**Electropherogram Summary Continued ...**



**Overall Results for sample 7 : 6kb 1:10 ill**

Number of peaks found: 16      Corr. Area 1: 460.9  
 Noise: 0.5

**Peak table for sample 7 : 6kb 1:10 ill**

Peak	Size [bp]	Conc. [pg/μl]	Molarity [pmol/l]	Observations
1	35	125.00	5,411.3	Lower Marker
2	339	8.56	38.2	
3	352	10.08	43.4	
4	378	27.38	109.9	
5	392	21.42	82.9	
6	401	18.61	70.4	
7	415	20.38	74.5	
8	436	20.86	72.4	
9	454	30.53	102.0	
10	498	25.87	78.7	
11	523	24.56	71.1	
12	539	20.80	58.4	
13	577	36.61	96.1	
14	640	13.44	31.8	
15	682	11.74	26.1	
16	730	25.78	53.5	
17	3,943	4.49	1.7	
18	10,380	75.00	10.9	Upper Marker

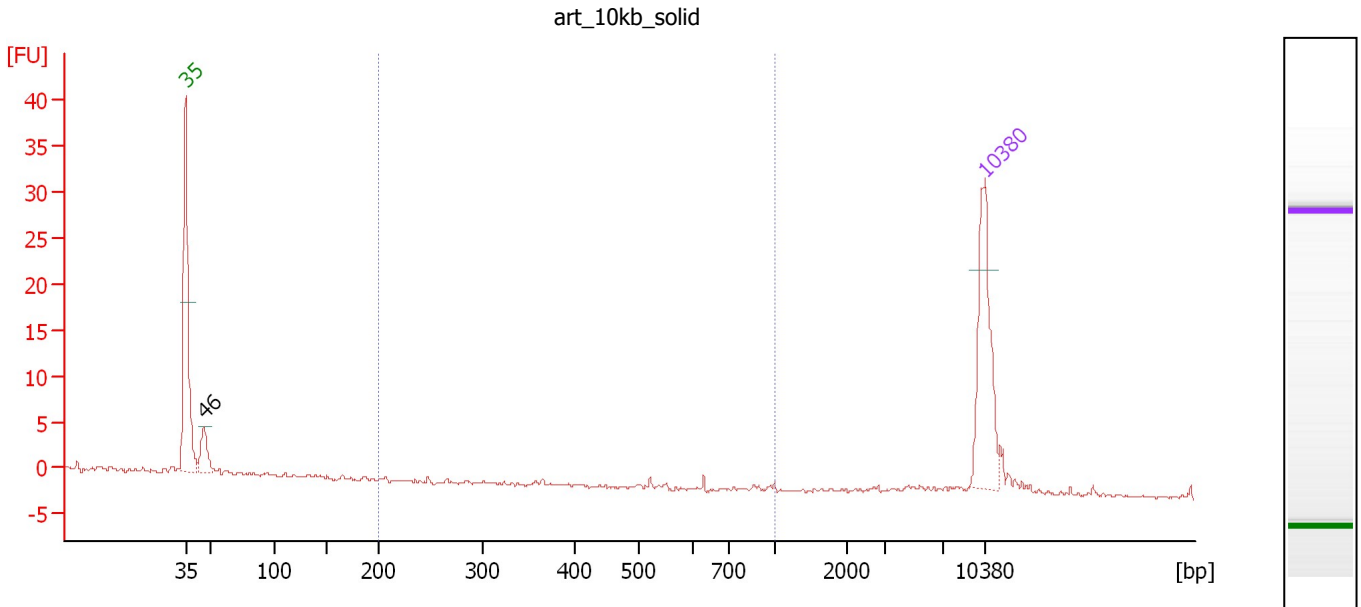
**Region table for sample 7 : 6kb 1:10 ill**

From [bp]	To [bp]	Average Size [bp]	Molarity [pmol/l]	Conc. [pg/μl]	Corr. Area	% of Total	Size distribution in CV [%]	Color
303	1,300	515	1,441.8	458.59	460.9	90	23.1	Blue

Assay Class: High Sensitivity DNA Assay  
 Data Path: C:\...ents and Settings\Bioanalyzer\2012-08-06\2012-08-06\_001.xad

Created: 8/6/2012 9:30:05 AM  
 Modified: 8/6/2012 10:05:48 AM

**Electropherogram Summary Continued ...**



**Overall Results for sample 8 : art\_10kb\_solid**

Number of peaks found: 1                      Corr. Area 1: 0.2  
 Noise: 0.2

**Peak table for sample 8 : art\_10kb\_solid**

Peak	Size [bp]	Conc. [pg/μl]	Molarity [pmol/l]	Observations
1	35	125.00	5,411.3	Lower Marker
2	46	33.30	1,102.0	
3	10,380	75.00	10.9	Upper Marker

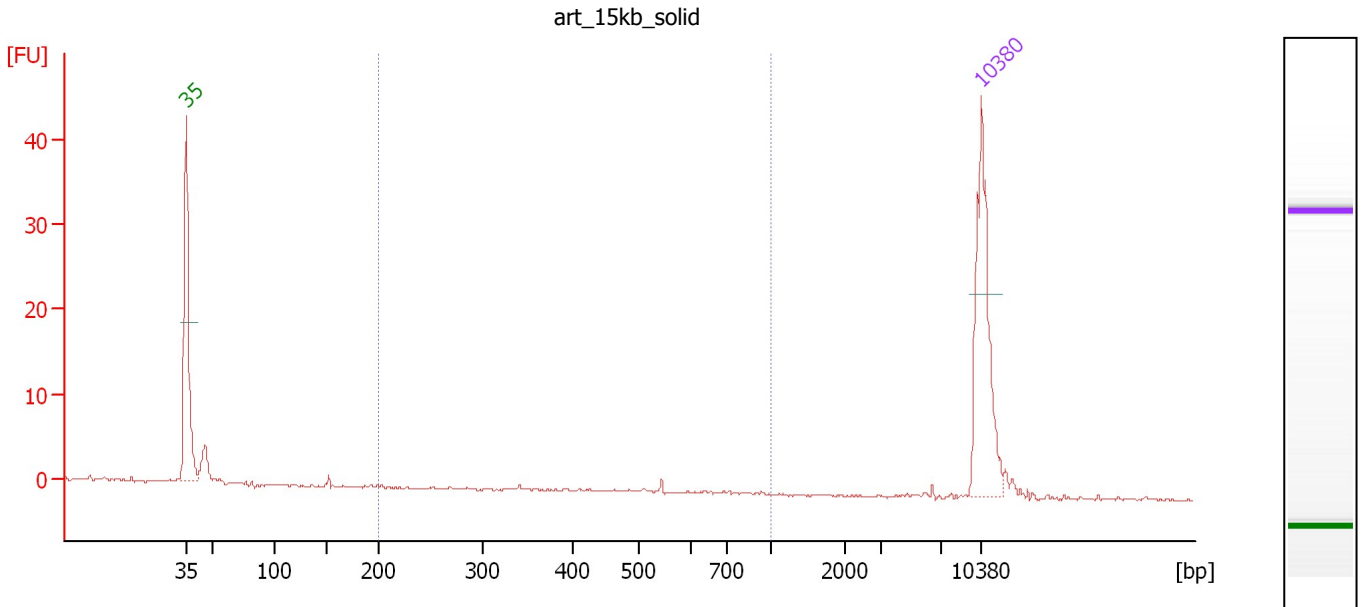
**Region table for sample 8 : art\_10kb\_solid**

From [bp]	To [bp]	Average Size [bp]	Molarity [pmol/l]	Conc. [pg/μl]	Corr. Area	% of Total	Size distribution in CV [%]	Color
200	1,000	587	1.3	0.49	0.2	1	9.1	Blue

Assay Class: High Sensitivity DNA Assay  
 Data Path: C:\...ents and Settings\Bioanalyzer\2012-08-06\2012-08-06\_001.xad

Created: 8/6/2012 9:30:05 AM  
 Modified: 8/6/2012 10:05:48 AM

**Electropherogram Summary Continued ...**



**Overall Results for sample 9 : art\_15kb\_solid**

Number of peaks found: 0                      Corr. Area 1: 0.5  
 Noise: 0.1

**Peak table for sample 9 : art\_15kb\_solid**

Peak	Size [bp]	Conc. [pg/μl]	Molarity [pmol/l]	Observations
1	35	125.00	5,411.3	Lower Marker
2	10,380	75.00	10.9	Upper Marker

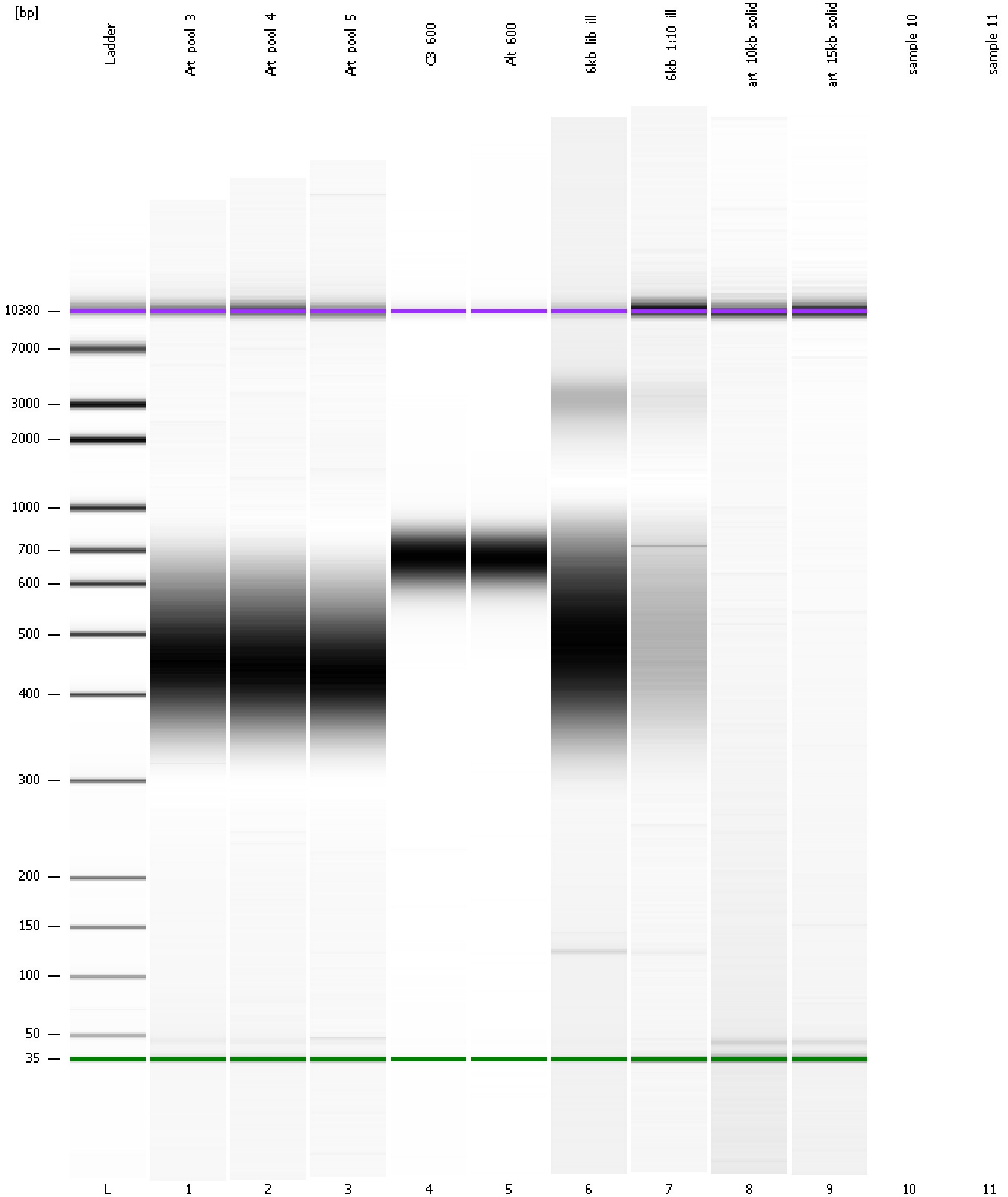
**Region table for sample 9 : art\_15kb\_solid**

From [bp]	To [bp]	Average Size [bp]	Molarity [pmol/l]	Conc. [pg/μl]	Corr. Area	% of Total	Size distribution in CV [%]	Color
200	1,000	543	2.8	0.93	0.5	3	19.5	Blue

Assay Class: High Sensitivity DNA Assay  
Data Path: C:\...ents and Settings\Bioanalyzer\2012-08-06\2012-08-06\_001.xad

Created: 8/6/2012 9:30:05 AM  
Modified: 8/6/2012 10:05:48 AM

**Gel Image**



Assay Class: High Sensitivity DNA Assay  
Data Path: C:\...ents and Settings\Bioanalyzer\2012-08-06\2012-08-06\_001.xad

Created: 8/6/2012 9:30:05 AM  
Modified: 8/6/2012 10:05:48 AM

**Invalid Samples**

Sample 10 has not been run, no results available.

Sample 11 has not been run, no results available.