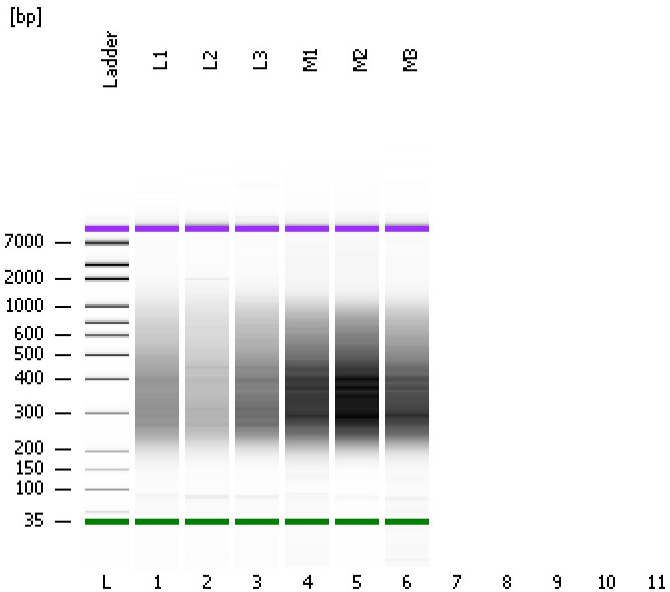


Assay Class: High Sensitivity DNA Assay  
Data Path: C:\...ents and Settings\Bioanalyzer\2012-08-06\2012-08-06\_002.xad

Created: 8/6/2012 11:42:40 AM  
Modified: 8/6/2012 1:23:55 PM

**Electrophoresis File Run Summary**



Instrument Information:

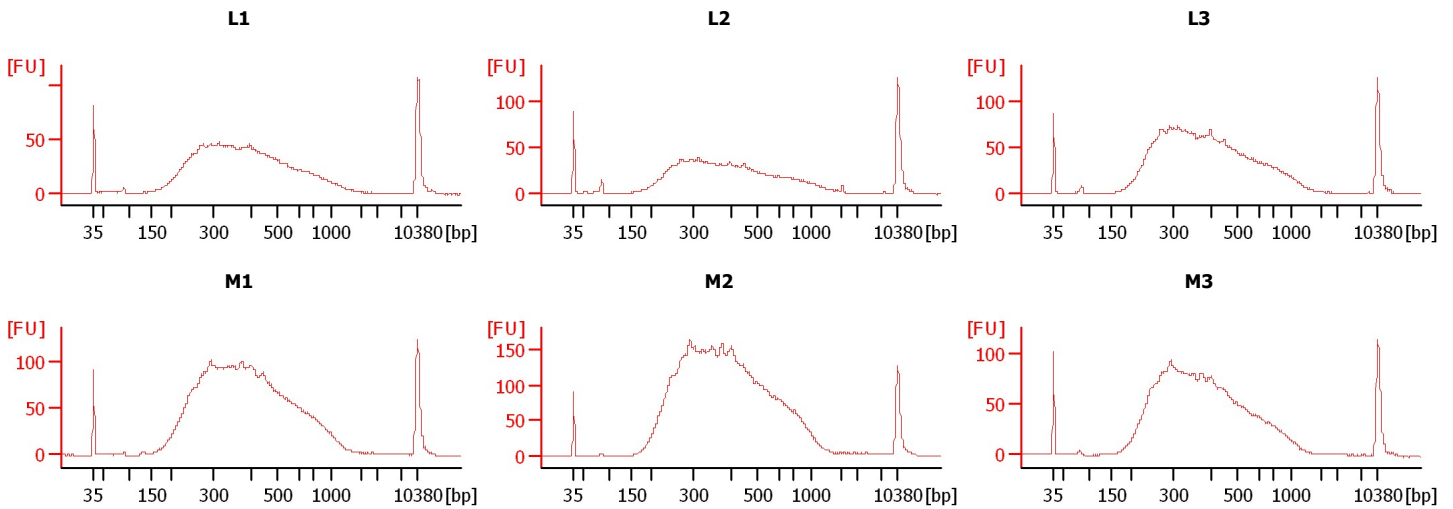
Instrument Name: DE13701086      Firmware: C.01.069  
Serial#: DE13701086      Type: G2938B

Assay Information:

Assay Origin Path: C:\Program Files\Agilent\2100 bioanalyzer\2100 expert\assays\dsDNA\High Sensitivity DNA.xsy  
Assay Class: High Sensitivity DNA Assay  
Version: 1.03  
Assay Comments: Copyright © 2003-2010 Agilent Technologies

Chip Information:

Chip Lot #:  
Reagent Kit Lot #:  
Chip Comments:



Assay Class: High Sensitivity DNA Assay  
 Data Path: C:\...ents and Settings\Bioanalyzer\2012-08-06\2012-08-06\_002.xad

Created: 8/6/2012 11:42:40 AM  
 Modified: 8/6/2012 1:23:55 PM

**Electrophoresis File Run Summary (Chip Summary)**

Sample Name	Sample Comment	Rest. Digest	Status	Observation	Result Label	Result Color
L1		<input type="checkbox"/>	✓			
L2		<input type="checkbox"/>	✓			
L3		<input type="checkbox"/>	✓			
M1		<input type="checkbox"/>	✓			
M2		<input type="checkbox"/>	✓			
M3		<input type="checkbox"/>	✓			
		<input type="checkbox"/>				
		<input type="checkbox"/>				
		<input type="checkbox"/>				
		<input type="checkbox"/>				
Ladder		<input type="checkbox"/>	✓			

**Chip Lot #**

**Reagent Kit Lot #**

**Chip Comments :**

Assay Class: High Sensitivity DNA Assay  
Data Path: C:\...ents and Settings\Bioanalyzer\2012-08-06\2012-08-06\_002.xad

Created: 8/6/2012 11:42:40 AM  
Modified: 8/6/2012 1:23:55 PM

**Electrophoresis Assay Details**

**General Analysis Settings**

Number of Available Sample and Ladder Wells (Max.) : 12  
Minimum Visible Range [s] : 32  
Maximum Visible Range [s] : 138  
Start Analysis Time Range [s] : 33  
End Analysis Time Range [s] : 137.5  
Ladder Concentration [pg/μl] : 1950  
Uses Standard Area for Ladder Fragments  
Lower Marker Concentration [pg/μl] : 125  
Upper Marker Concentration [pg/μl] : 75  
Used Upper Marker for Quantitation  
Standard Curve Fit is Point to Point  
Show Data Aligned to Lower and Upper Marker

**Integrator Settings**

Integration Start Time [s] : 33.05  
Integration End Time [s] : 137  
Slope Threshold : 0.8  
Height Threshold [FU] : 5  
Area Threshold : 0.1  
Width Threshold [s] : 0.6  
Baseline Plateau [s] : 0.5

**Filter Settings**

Filter Width [s] : 0.5  
Polynomial Order : 4

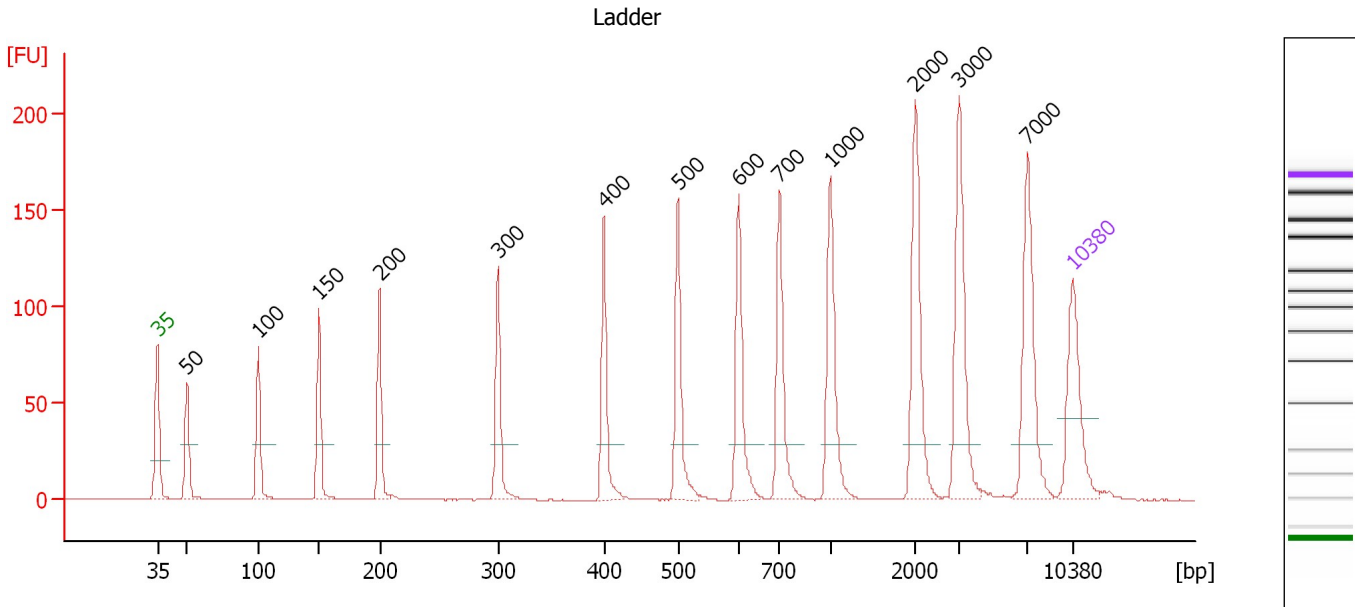
**Ladder**

Ladder Peak	Size	Area
1	35	160
2	50	210
3	100	208
4	150	221
5	200	242
6	300	270
7	400	305
8	500	306
9	600	336
10	700	321
11	1000	366
12	2000	413
13	3000	411
14	7000	400
15	10380	214

Assay Class: High Sensitivity DNA Assay  
 Data Path: C:\...ents and Settings\Bioanalyzer\2012-08-06\2012-08-06\_002.xad

Created: 8/6/2012 11:42:40 AM  
 Modified: 8/6/2012 1:23:55 PM

**Electropherogram Summary**



**Overall Results for Ladder**

Noise: 0.1

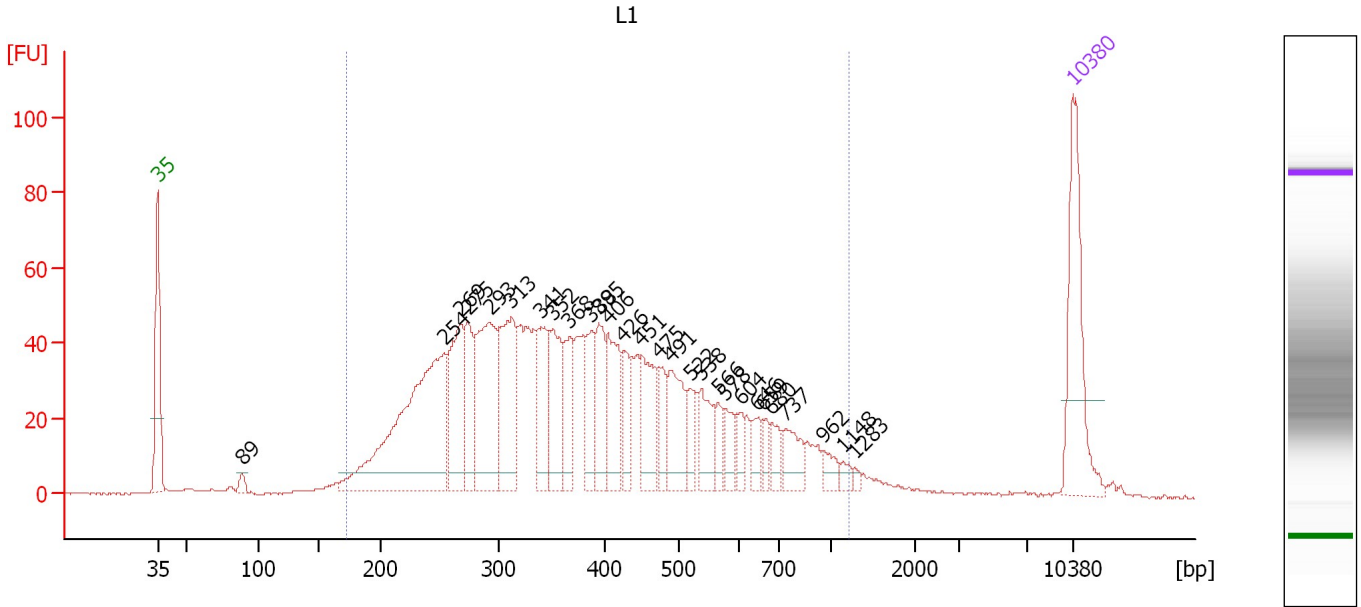
**Peak table for Ladder**

Peak	Size [bp]	Conc. [pg/μl]	Molarity [pmol/l]	Observations
1	35	125.00	5,411.3	Lower Marker
2	50	150.00	4,545.5	Ladder Peak
3	100	150.00	2,272.7	Ladder Peak
4	150	150.00	1,515.2	Ladder Peak
5	200	150.00	1,136.4	Ladder Peak
6	300	150.00	757.6	Ladder Peak
7	400	150.00	568.2	Ladder Peak
8	500	150.00	454.5	Ladder Peak
9	600	150.00	378.8	Ladder Peak
10	700	150.00	324.7	Ladder Peak
11	1,000	150.00	227.3	Ladder Peak
12	2,000	150.00	113.6	Ladder Peak
13	3,000	150.00	75.8	Ladder Peak
14	7,000	150.00	32.5	Ladder Peak
15	10,380	75.00	10.9	Upper Marker

Assay Class: High Sensitivity DNA Assay  
 Data Path: C:\...ents and Settings\Bioanalyzer\2012-08-06\2012-08-06\_002.xad

Created: 8/6/2012 11:42:40 AM  
 Modified: 8/6/2012 1:23:55 PM

**Electropherogram Summary Continued ...**



**Overall Results for sample 1 : L1**

Number of peaks found: 28                      Corr. Area 1: 1,613.1  
 Noise: 0.2

**Peak table for sample 1 : L1**

Peak	Size [bp]	Conc. [pg/μl]	Molarity [pmol/l]	Observations
1	35	125.00	5,411.3	Lower Marker
2	89	8.01	136.9	
3	254	273.41	1,629.0	
4	269	89.79	505.9	
5	275	59.94	330.6	
6	293	127.86	660.7	
7	313	106.11	513.6	
8	341	56.51	251.0	
9	352	60.85	261.9	
10	368	42.12	173.6	
11	388	46.90	183.0	
12	395	47.24	181.1	
13	406	60.46	225.8	
14	426	32.83	116.8	
15	451	50.57	170.0	
16	475	24.30	77.5	
17	491	51.05	157.7	
18	522	20.54	59.7	
19	538	34.11	96.1	
20	566	14.16	37.9	
21	578	17.79	46.6	
22	604	12.12	30.4	
23	646	13.09	30.7	
24	659	11.11	25.5	
25	680	15.03	33.5	
26	737	25.55	52.5	


Assay Class: High Sensitivity DNA Assay  
Data Path: C:\...ents and Settings\Bioanalyzer\2012-08-06\2012-08-06\_002.xad

Created: 8/6/2012 11:42:40 AM  
Modified: 8/6/2012 1:23:55 PM

**Electropherogram Summary Continued ...****... Peak table for sample 1 : L1**

Peak	Size [bp]	Conc. [pg/μl]	Molarity [pmol/l]	Observations
27	962	11.02	17.3	
28	1,148	5.92	7.8	
29	1,283	3.18	3.8	
30	10,380	75.00	10.9	Upper Marker

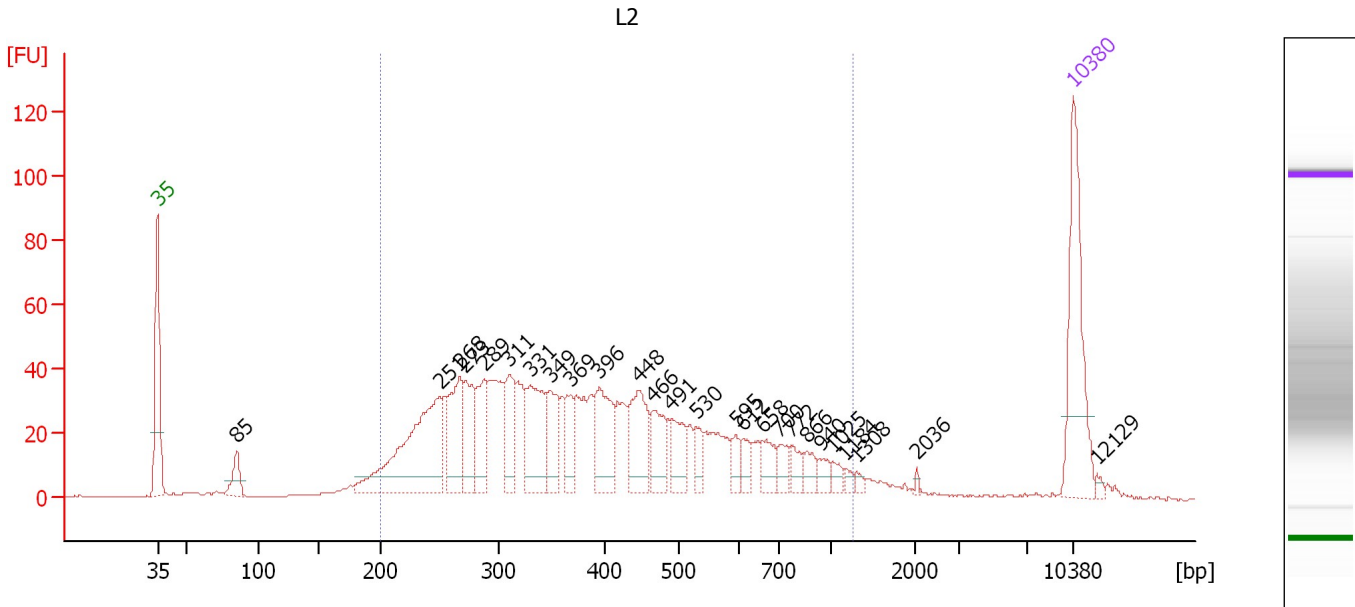
**Region table for sample 1 : L1**

From [bp]	To [bp]	Average Size [bp]	Molarity [pmol/l]	Conc. [pg/μl]	Corr. Area	% of Total	Size distribution in CV [%]	Color
173	1,215	410	7,388.8	1,644.41	1,613.1	95	41.8	

Assay Class: High Sensitivity DNA Assay  
 Data Path: C:\...ents and Settings\Bioanalyzer\2012-08-06\2012-08-06\_002.xad

Created: 8/6/2012 11:42:40 AM  
 Modified: 8/6/2012 1:23:55 PM

**Electropherogram Summary Continued ...**



**Overall Results for sample 2 : L2**

Number of peaks found: 26                      Corr. Area 1: 1,257.3  
 Noise: 0.1

**Peak table for sample 2 : L2**

Peak	Size [bp]	Conc. [pg/μl]	Molarity [pmol/l]	Observations
1	35	125.00	5,411.3	Lower Marker
2	85	23.53	419.1	
3	251	157.22	947.9	
4	268	61.93	350.5	
5	273	49.01	272.3	
6	289	45.16	237.1	
7	311	42.49	207.0	
8	331	67.54	309.2	
9	349	40.71	176.6	
10	369	24.73	101.7	
11	396	52.74	201.9	
12	448	51.28	173.4	
13	466	35.68	116.1	
14	491	28.25	87.2	
15	530	14.49	41.5	
16	595	11.27	28.7	
17	612	11.42	28.3	
18	658	17.28	39.8	
19	700	12.79	27.7	
20	772	12.20	23.9	
21	866	10.43	18.2	
22	940	8.97	14.5	
23	1,025	6.23	9.2	
24	1,184	3.50	4.5	
25	1,308	3.46	4.0	
26	2,036	1.31	1.0	


Assay Class: High Sensitivity DNA Assay  
Data Path: C:\...ents and Settings\Bioanalyzer\2012-08-06\2012-08-06\_002.xad

Created: 8/6/2012 11:42:40 AM  
Modified: 8/6/2012 1:23:55 PM

**Electropherogram Summary Continued ...****... Peak table for sample 2 : L2**

Peak	Size [bp]	Conc. [pg/ $\mu$ l]	Molarity [pmol/l]	Observations
27	10,380	75.00	10.9	Upper Marker
28	12,129	0.00	0.0	

**Region table for sample 2 : L2**

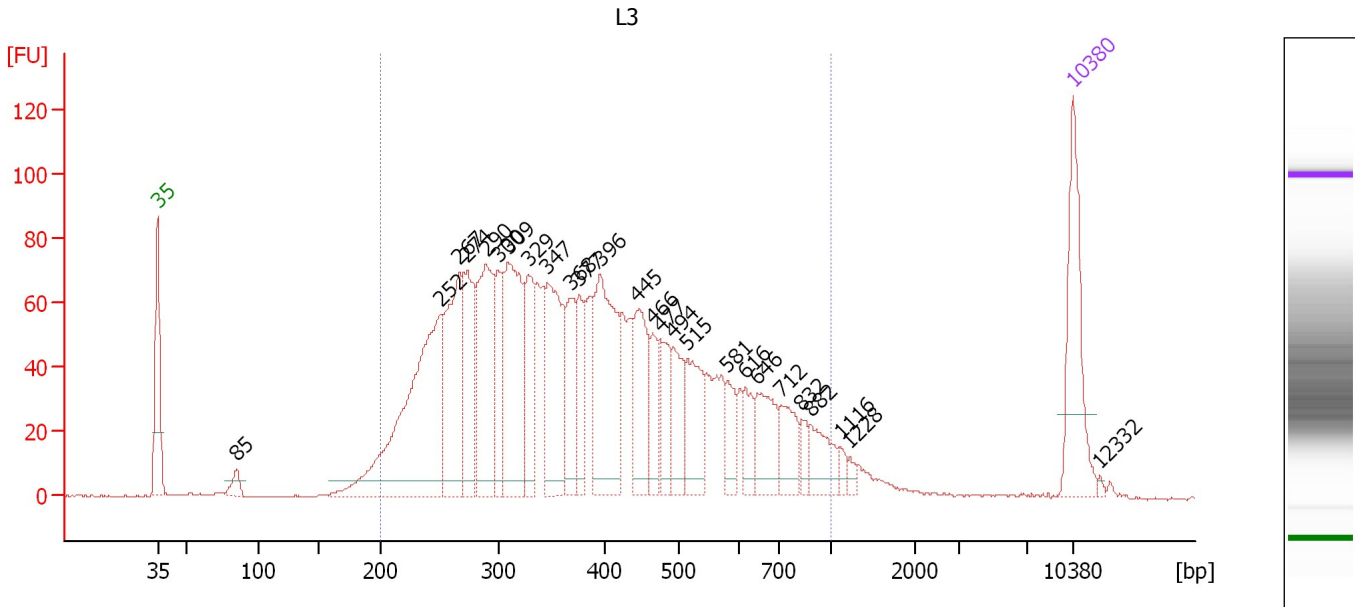
From [bp]	To [bp]	Average Size [bp]	Molarity [pmol/l]	Conc. [pg/ $\mu$ l]	Corr. Area	% of Total	Size distribution in CV [%]	Color
200	1,274	427	4,897.8	1,124.20	1,257.3	90	44.1	



Assay Class: High Sensitivity DNA Assay  
 Data Path: C:\...ents and Settings\Bioanalyzer\2012-08-06\2012-08-06\_002.xad

Created: 8/6/2012 11:42:40 AM  
 Modified: 8/6/2012 1:23:55 PM

**Electropherogram Summary Continued ...**



**Overall Results for sample 3 : L3**

Number of peaks found: 26                      Corr. Area 1: 2,303.4  
 Noise: 0.2

**Peak table for sample 3 : L3**

Peak	Size [bp]	Conc. [pg/μl]	Molarity [pmol/l]	Observations
1	35	125.00	5,411.3	Lower Marker
2	85	15.54	278.2	
3	252	299.34	1,797.3	
4	267	148.43	840.8	
5	274	95.94	530.4	
6	290	145.94	761.9	
7	300	64.51	325.4	
8	309	158.63	777.0	
9	329	74.93	345.1	
10	347	122.79	536.2	
11	368	58.24	239.9	
12	377	43.95	176.8	
13	396	143.33	547.9	
14	445	80.69	274.8	
15	466	34.48	112.1	
16	477	41.95	133.2	
17	494	47.05	144.3	
18	515	63.17	185.7	
19	581	27.60	71.9	
20	616	25.32	62.3	
21	646	50.39	118.1	
22	712	38.63	82.2	
23	832	12.44	22.6	
24	882	34.78	59.8	
25	1,116	7.03	9.5	
26	1,228	5.06	6.2	


Assay Class: High Sensitivity DNA Assay  
Data Path: C:\...ents and Settings\Bioanalyzer\2012-08-06\2012-08-06\_002.xad

Created: 8/6/2012 11:42:40 AM  
Modified: 8/6/2012 1:23:55 PM

**Electropherogram Summary Continued ...****... Peak table for sample 3 : L3**

Peak	Size [bp]	Conc. [pg/ $\mu$ l]	Molarity [pmol/l]	Observations
27	10,380	75.00	10.9	Upper Marker
28	12,332	0.00	0.0	

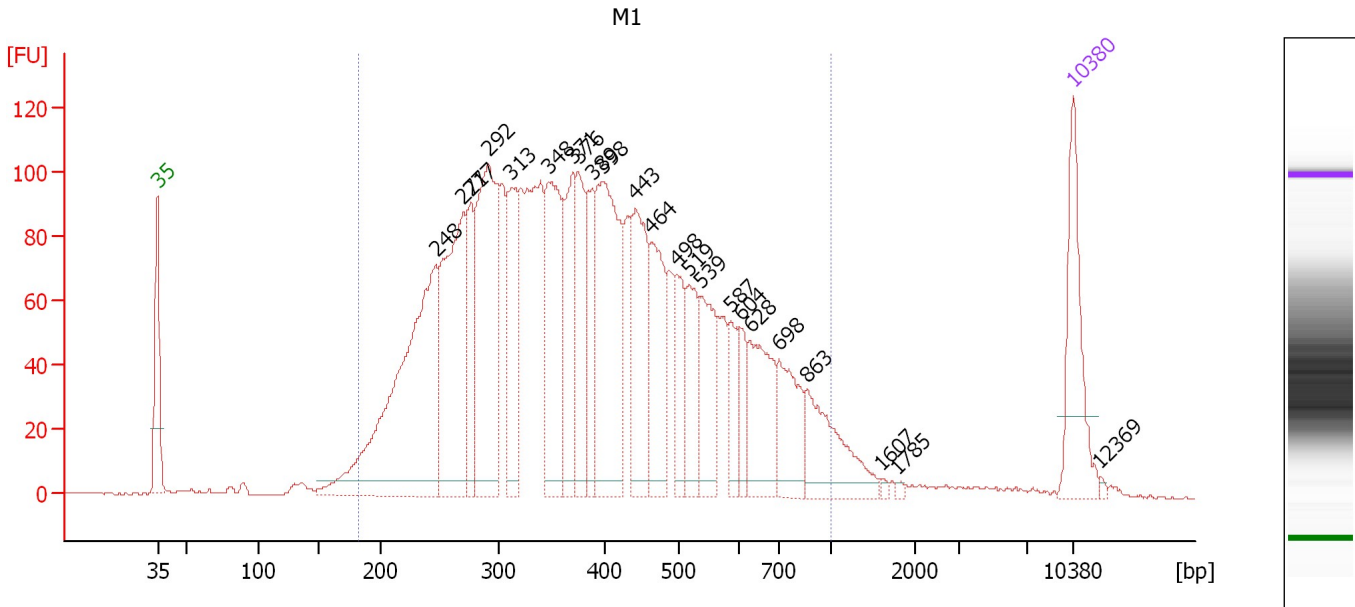
**Region table for sample 3 : L3**

From [bp]	To [bp]	Average Size [bp]	Molarity [pmol/l]	Conc. [pg/ $\mu$ l]	Corr. Area	% of Total	Size distribution in CV [%]	Color
200	1,000	409	9,165.2	2,091.43	2,303.4	94	37.9	

Assay Class: High Sensitivity DNA Assay  
 Data Path: C:\...ents and Settings\Bioanalyzer\2012-08-06\2012-08-06\_002.xad

Created: 8/6/2012 11:42:40 AM  
 Modified: 8/6/2012 1:23:55 PM

**Electropherogram Summary Continued ...**



**Overall Results for sample 4 : M1**

Number of peaks found: 23                      Corr. Area 1: 3,368.8  
 Noise: 0.2

**Peak table for sample 4 : M1**

Peak	Size [bp]	Conc. [pg/μl]	Molarity [pmol/l]	Observations
1	35	125.00	5,411.3	Lower Marker
2	248	402.25	2,462.0	
3	271	246.27	1,378.4	
4	277	78.07	427.2	
5	292	245.10	1,270.5	
6	313	105.60	511.8	
7	348	167.57	729.4	
8	371	97.96	400.1	
9	376	88.47	357.0	
10	389	68.49	267.0	
11	398	214.47	815.6	
12	443	128.60	439.9	
13	464	104.64	341.4	
14	498	56.56	172.1	
15	519	61.22	178.8	
16	539	81.04	228.0	
17	587	37.12	95.9	
18	604	26.41	66.3	
19	628	86.03	207.7	
20	698	70.84	153.9	
21	863	83.00	145.6	
22	1,607	2.43	2.3	
23	1,785	2.06	1.7	
24	10,380	75.00	10.9	Upper Marker
25	12,369	0.00	0.0	

Assay Class: High Sensitivity DNA Assay  
Data Path: C:\...ents and Settings\Bioanalyzer\2012-08-06\2012-08-06\_002.xad

Created: 8/6/2012 11:42:40 AM  
Modified: 8/6/2012 1:23:55 PM

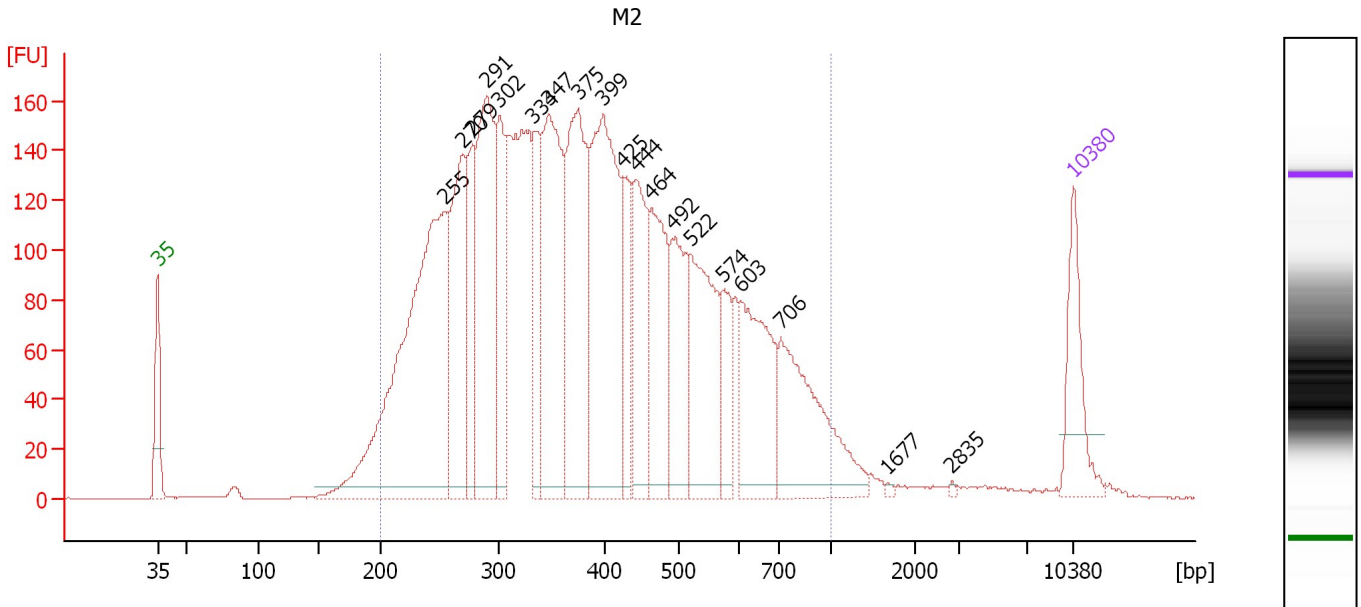
**Electropherogram Summary Continued ...****... Region table for sample 4 : M1**

<b>From [bp]</b>	<b>To [bp]</b>	<b>Average Size [bp]</b>	<b>Molarity [pmol/l]</b>	<b>Conc. [pg/μl]</b>	<b>Corr. Area</b>	<b>% of Total</b>	<b>Size distribution in CV [%]</b>	<b>Co lor</b>
183	1,000	410	12,670.1	2,883.34	3,368.8	95	37.5	

Assay Class: High Sensitivity DNA Assay  
 Data Path: C:\...ents and Settings\Bioanalyzer\2012-08-06\2012-08-06\_002.xad

Created: 8/6/2012 11:42:40 AM  
 Modified: 8/6/2012 1:23:55 PM

**Electropherogram Summary Continued ...**



**Overall Results for sample 5 : M2**

Number of peaks found: 19                      Corr. Area 1: 5,063.6  
 Noise: 0.2

**Peak table for sample 5 : M2**

Peak	Size [bp]	Conc. [pg/μl]	Molarity [pmol/l]	Observations
1	35	125.00	5,411.3	Lower Marker
2	255	682.52	4,054.5	
3	270	239.54	1,343.3	
4	279	136.85	744.5	
5	291	320.90	1,673.6	
6	302	138.75	696.9	
7	334	117.18	532.3	
8	347	316.37	1,379.6	
9	375	298.31	1,204.3	
10	399	370.71	1,407.4	
11	425	92.14	328.2	
12	444	156.87	535.6	
13	464	174.99	571.7	
14	492	142.60	439.0	
15	522	199.87	580.3	
16	574	59.91	158.3	
17	603	171.05	429.8	
18	706	205.33	440.8	
19	1,677	2.30	2.1	
20	2,835	1.77	0.9	
21	10,380	75.00	10.9	Upper Marker

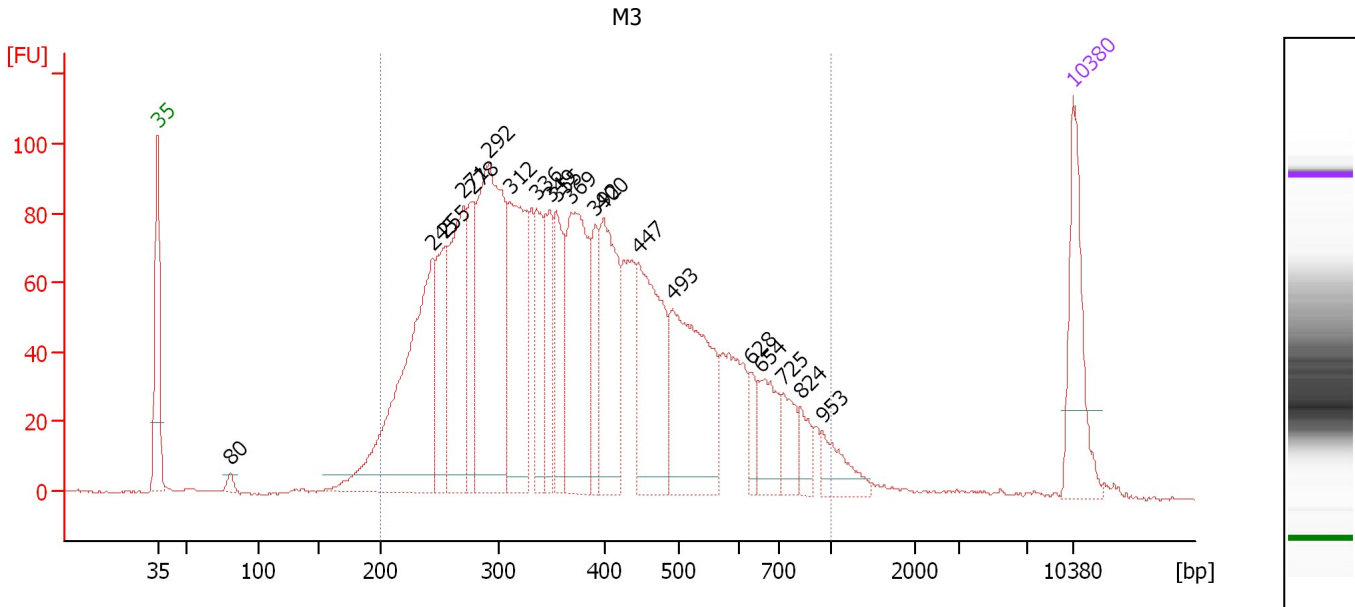
**Region table for sample 5 : M2**

From [bp]	To [bp]	Average Size [bp]	Molarity [pmol/l]	Conc. [pg/μl]	Corr. Area	% of Total	Size distribution in CV [%]	Color
200	1,000	409	18,204.3	4,177.03	5,063.6	95	37.0	Blue

Assay Class: High Sensitivity DNA Assay  
 Data Path: C:\...ents and Settings\Bioanalyzer\2012-08-06\2012-08-06\_002.xad

Created: 8/6/2012 11:42:40 AM  
 Modified: 8/6/2012 1:23:55 PM

**Electropherogram Summary Continued ...**



**Overall Results for sample 6 : M3**

Number of peaks found: 20                      Corr. Area 1: 2,735.5  
 Noise: 0.3

**Peak table for sample 6 : M3**

Peak	Size [bp]	Conc. [pg/μl]	Molarity [pmol/l]	Observations
1	35	125.00	5,411.3	Lower Marker
2	80	8.21	154.8	
3	245	328.48	2,031.9	
4	255	97.11	576.0	
5	271	183.57	1,027.4	
6	278	79.84	435.1	
7	292	321.03	1,664.3	
8	312	184.87	898.2	
9	336	72.29	326.2	
10	349	74.90	324.9	
11	355	90.29	385.2	
12	369	180.96	743.9	
13	392	59.75	230.9	
14	400	141.94	538.2	
15	447	168.33	570.1	
16	493	196.80	605.1	
17	628	19.69	47.5	
18	654	51.93	120.3	
19	725	33.48	70.0	
20	824	21.45	39.4	
21	953	32.17	51.1	
22	10,380	75.00	10.9	Upper Marker

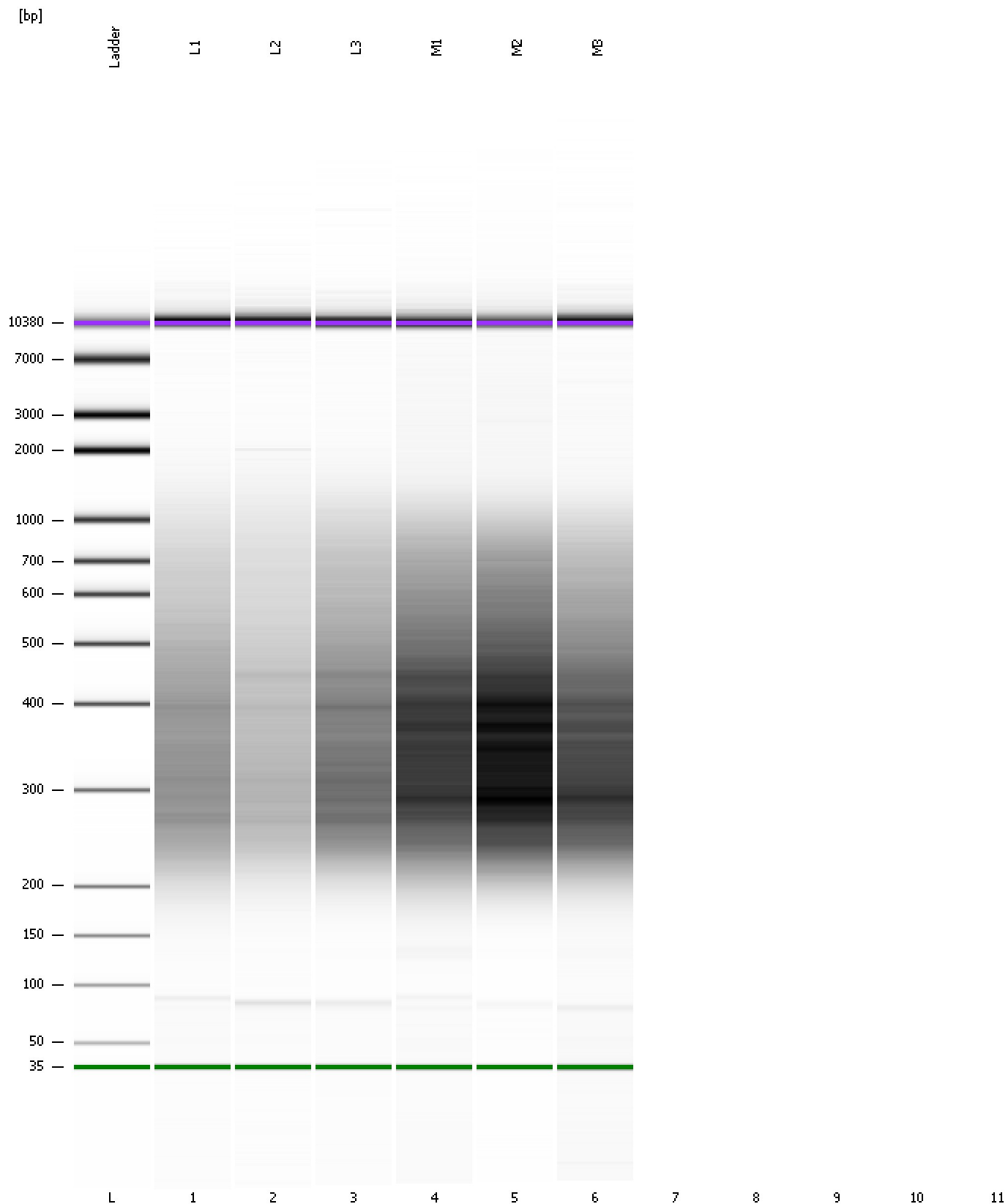
**Region table for sample 6 : M3**

From [bp]	To [bp]	Average Size [bp]	Molarity [pmol/l]	Conc. [pg/μl]	Corr. Area	% of Total	Size distribution in CV [%]	Color
200	1,000	400	11,328.6	2,551.76	2,735.5	96	37.0	Blue

Assay Class: High Sensitivity DNA Assay  
Data Path: C:\...ents and Settings\Bioanalyzer\2012-08-06\2012-08-06\_002.xad

Created: 8/6/2012 11:42:40 AM  
Modified: 8/6/2012 1:23:55 PM

**Gel Image**



Assay Class: High Sensitivity DNA Assay  
Data Path: C:\...ents and Settings\Bioanalyzer\2012-08-06\2012-08-06\_002.xad

Created: 8/6/2012 11:42:40 AM  
Modified: 8/6/2012 1:23:55 PM

**Invalid Samples**

Sample 7 has not been run, no results available.

Sample 8 has not been run, no results available.

Sample 9 has not been run, no results available.

Sample 10 has not been run, no results available.

Sample 11 has not been run, no results available.