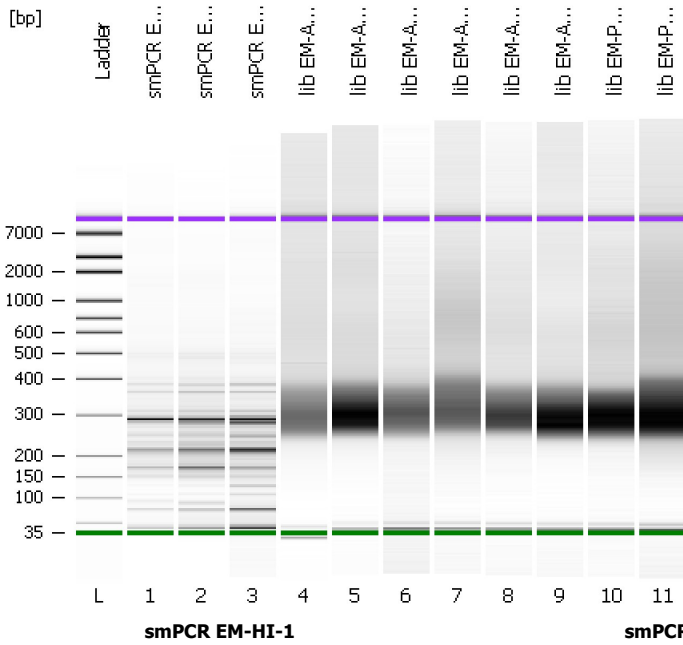


Assay Class: High Sensitivity DNA Assay
Data Path: C:\...ents and Settings\Bioanalyzer\2012-08-07\2012-08-07_001.xad

Created: 8/7/2012 10:08:15 AM
Modified: 8/7/2012 10:49:40 AM

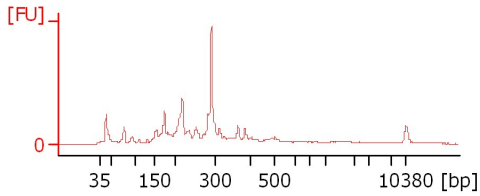
Electrophoresis File Run Summary



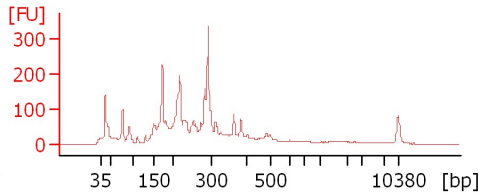
Instrument Information:
Instrument Name: DE13701086 Firmware: C.01.069
Serial#: DE13701086 Type: G2938B

Assay Information:
Assay Origin Path: C:\Program Files\Agilent\2100 bioanalyzer\2100 expert\assays\dsDNA\High Sensitivity DNA.xsy
Assay Class: High Sensitivity DNA Assay
Version: 1.03
Assay Comments: Copyright © 2003-2010 Agilent Technologies

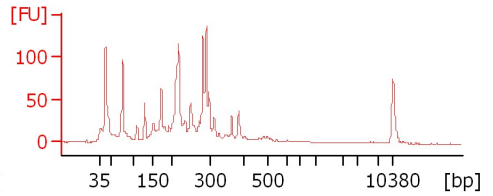
Chip Information:
Chip Lot #: Reagent Kit Lot #: Chip Comments:



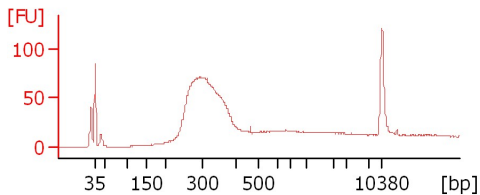
lib EM-Ax-ST-1



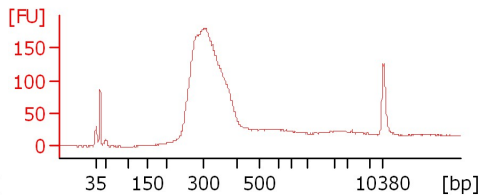
lib EM-Ax-ST-2



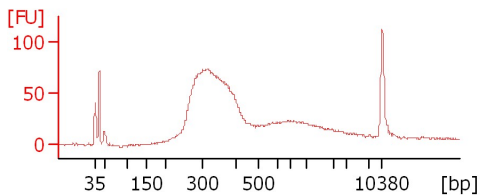
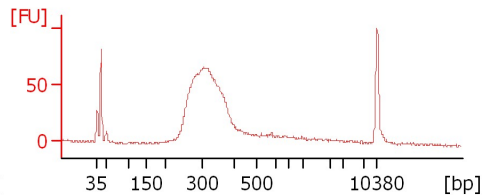
lib EM-Ax-ST-3



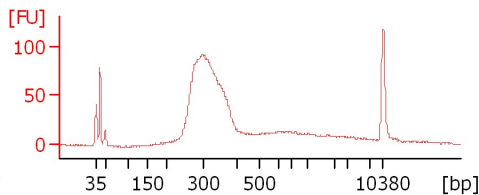
lib EM-Ax-VS-2



lib EM-Ax-VS-3



lib EM-PL-2



Assay Class: High Sensitivity DNA Assay
 Data Path: C:\...ents and Settings\Bioanalyzer\2012-08-07\2012-08-07_001.xad

Created: 8/7/2012 10:08:15 AM
 Modified: 8/7/2012 10:49:40 AM

Electrophoresis File Run Summary (Chip Summary)

Sample Name	Sample Comment	Rest. Digest	Status	Observation	Result Label	Result Color
smPCR EM-HI-1		<input type="checkbox"/>	✓			
smPCR EM-HI-2		<input type="checkbox"/>	✓			
smPCR EM-RT-2		<input type="checkbox"/>	✓			
lib EM-Ax-ST-1		<input type="checkbox"/>	✓			
lib EM-Ax-ST-2		<input type="checkbox"/>	✓			
lib EM-Ax-ST-3		<input type="checkbox"/>	✓			
lib EM-Ax-VS-1		<input type="checkbox"/>	✓			
lib EM-Ax-VS-2		<input type="checkbox"/>	✓			
lib EM-Ax-VS-3		<input type="checkbox"/>	✓			
lib EM-PL-1		<input type="checkbox"/>	✓			
lib EM-PL-2		<input type="checkbox"/>	✓			
Ladder		<input type="checkbox"/>	✓			

Chip Lot #

Reagent Kit Lot #

Chip Comments :

Assay Class: High Sensitivity DNA Assay
Data Path: C:\...ents and Settings\Bioanalyzer\2012-08-07\2012-08-07_001.xad

Created: 8/7/2012 10:08:15 AM
Modified: 8/7/2012 10:49:40 AM

Electrophoresis Assay Details

General Analysis Settings

Number of Available Sample and Ladder Wells (Max.) : 12
Minimum Visible Range [s] : 32
Maximum Visible Range [s] : 138
Start Analysis Time Range [s] : 33
End Analysis Time Range [s] : 137.5
Ladder Concentration [pg/ μ l] : 1950
Uses Standard Area for Ladder Fragments
Lower Marker Concentration [pg/ μ l] : 125
Upper Marker Concentration [pg/ μ l] : 75
Used Upper Marker for Quantitation
Standard Curve Fit is Point to Point
Show Data Aligned to Lower and Upper Marker

Integrator Settings

Integration Start Time [s] : 33.05
Integration End Time [s] : 137
Slope Threshold : 0.8
Height Threshold [FU] : 5
Area Threshold : 0.1
Width Threshold [s] : 0.6
Baseline Plateau [s] : 0.5

Filter Settings

Filter Width [s] : 0.5
Polynomial Order : 4

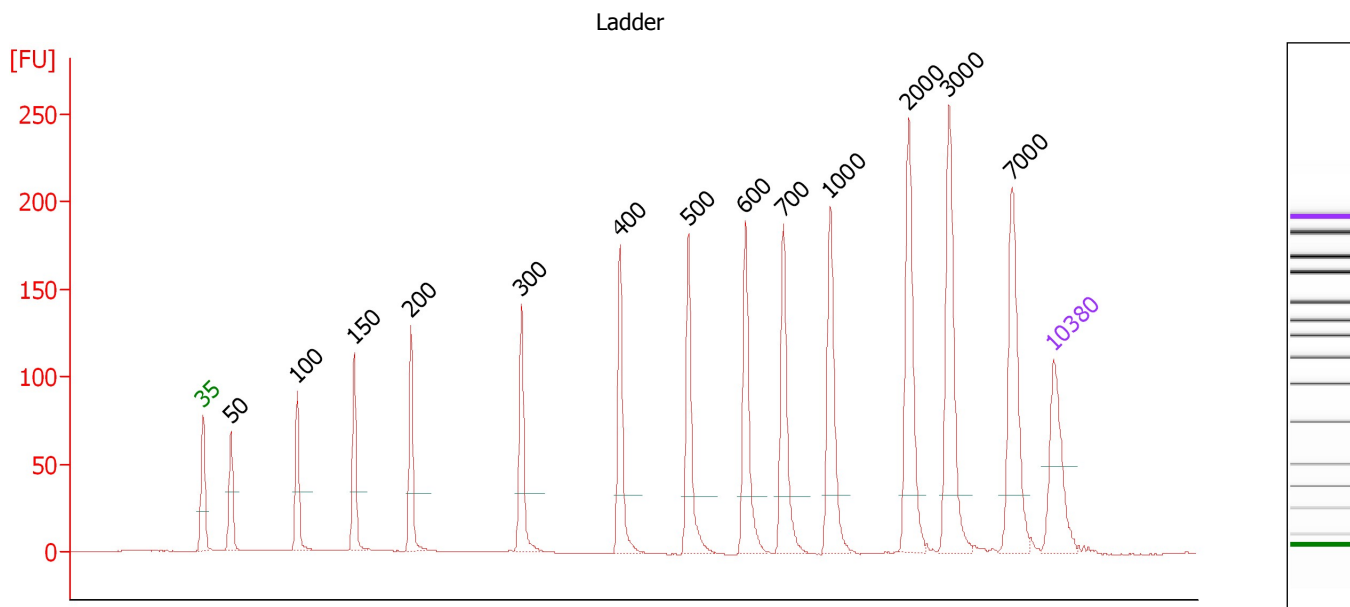
Ladder

Ladder Peak	Size	Area
1	35	160
2	50	210
3	100	208
4	150	221
5	200	242
6	300	270
7	400	305
8	500	306
9	600	336
10	700	321
11	1000	366
12	2000	413
13	3000	411
14	7000	400
15	10380	214

Assay Class: High Sensitivity DNA Assay
 Data Path: C:\...ents and Settings\Bioanalyzer\2012-08-07\2012-08-07_001.xad

Created: 8/7/2012 10:08:15 AM
 Modified: 8/7/2012 10:49:40 AM

Electropherogram Summary



Overall Results for Ladder

Noise: 0.2

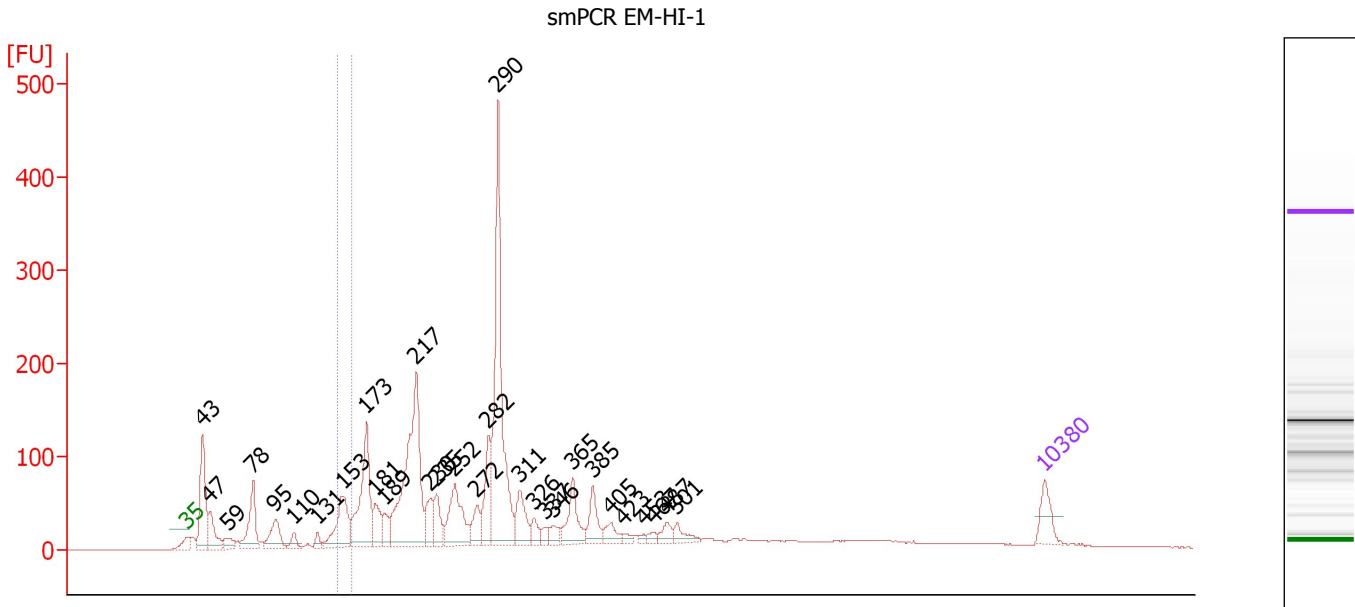
Peak table for Ladder

Peak	Size [bp]	Conc. [pg/μl]	Molarity [pmol/l]	Observations
1	35	125.00	5,411.3	Lower Marker
2	50	150.00	4,545.5	Ladder Peak
3	100	150.00	2,272.7	Ladder Peak
4	150	150.00	1,515.2	Ladder Peak
5	200	150.00	1,136.4	Ladder Peak
6	300	150.00	757.6	Ladder Peak
7	400	150.00	568.2	Ladder Peak
8	500	150.00	454.5	Ladder Peak
9	600	150.00	378.8	Ladder Peak
10	700	150.00	324.7	Ladder Peak
11	1,000	150.00	227.3	Ladder Peak
12	2,000	150.00	113.6	Ladder Peak
13	3,000	150.00	75.8	Ladder Peak
14	7,000	150.00	32.5	Ladder Peak
15	10,380	75.00	10.9	Upper Marker

Assay Class: High Sensitivity DNA Assay
 Data Path: C:\...ents and Settings\Bioanalyzer\2012-08-07\2012-08-07_001.xad

Created: 8/7/2012 10:08:15 AM
 Modified: 8/7/2012 10:49:40 AM

Electropherogram Summary Continued ...



Overall Results for sample 1 : smPCR EM-HI-1

Number of peaks found: 30 Corr. Area 1: 105.3
 Noise: 0.3

Peak table for sample 1 : smPCR EM-HI-1

Peak	Size [bp]	Conc. [pg/μl]	Molarity [pmol/l]	Observations
1	35	125.00	5,411.3	Lower Marker
2	43	428.27	15,136.0	
3	47	162.49	5,260.1	
4	59	63.97	1,632.1	
5	78	269.39	5,255.6	
6	95	164.76	2,634.7	
7	110	49.45	680.5	
8	131	33.75	391.8	
9	153	298.85	2,962.8	
10	173	494.02	4,315.6	
11	181	143.81	1,204.2	
12	189	79.97	639.9	
13	217	922.26	6,431.9	
14	230	122.09	805.6	
15	235	127.50	821.0	
16	252	285.44	1,716.6	
17	272	101.41	565.1	
18	282	224.66	1,207.5	
19	290	946.83	4,939.4	
20	311	155.73	758.1	
21	326	54.03	251.2	
22	337	30.49	137.0	
23	346	49.17	215.4	
24	365	161.46	670.8	
25	385	112.99	444.4	
26	405	60.45	226.1	

Assay Class: High Sensitivity DNA Assay
 Data Path: C:\...ents and Settings\Bioanalyzer\2012-08-07\2012-08-07_001.xad

Created: 8/7/2012 10:08:15 AM
 Modified: 8/7/2012 10:49:40 AM

Electropherogram Summary Continued ...

... Peak table for sample 1 : smPCR EM-HI-1

Peak	Size [bp]	Conc. [pg/ μ l]	Molarity [pmol/l]	Observations
27	423	20.17	72.3	
28	453	13.18	44.1	
29	467	20.97	68.0	
30	487	46.94	146.1	
31	501	51.08	154.6	
32	10,380	75.00	10.9	Upper Marker

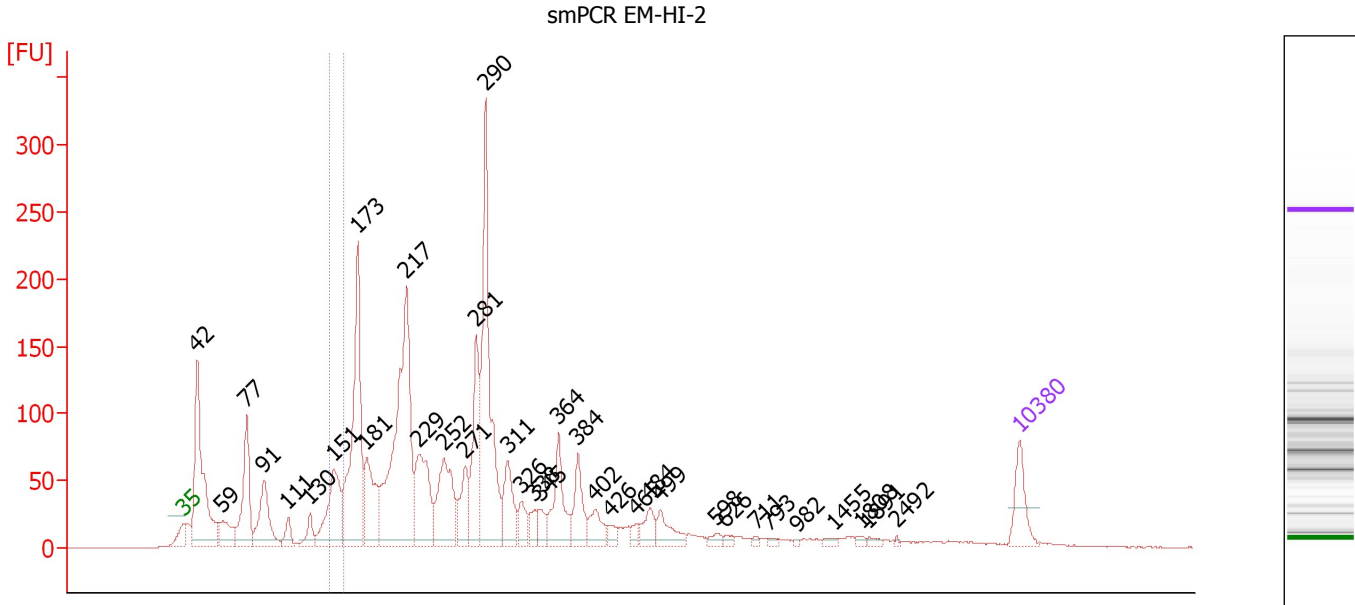
Region table for sample 1 : smPCR EM-HI-1

From [bp]	To [bp]	Average Size [bp]	Molarity [pmol/l]	Conc. [pg/ μ l]	Corr. Area	% of Total	Size distribution in CV [%]	Color
147	160	153	2,485.7	250.76	105.3	3	2.3	

Assay Class: High Sensitivity DNA Assay
 Data Path: C:\...ents and Settings\Bioanalyzer\2012-08-07\2012-08-07_001.xad

Created: 8/7/2012 10:08:15 AM
 Modified: 8/7/2012 10:49:40 AM

Electropherogram Summary Continued ...



Overall Results for sample 2 : smPCR EM-HI-2

Number of peaks found: 35 Corr. Area 1: 114.6
 Noise: 0.3

Peak table for sample 2 : smPCR EM-HI-2

Peak	Size [bp]	Conc. [pg/μl]	Molarity [pmol/l]	Observations
1	35	125.00	5,411.3	Lower Marker
2	42	612.40	21,987.0	
3	59	110.14	2,851.6	
4	77	290.86	5,735.3	
5	91	223.96	3,742.0	
6	111	50.47	691.9	
7	130	56.98	664.0	
8	151	279.14	2,801.8	
9	173	640.39	5,607.4	
10	181	233.06	1,954.0	
11	217	865.19	6,042.0	
12	229	279.69	1,853.3	
13	252	274.05	1,650.8	
14	271	130.07	727.1	
15	281	269.90	1,456.5	
16	290	618.03	3,234.3	
17	311	139.25	677.7	
18	326	61.37	285.5	
19	338	40.13	179.7	
20	345	45.51	200.2	
21	364	168.07	699.8	
22	384	110.39	435.8	
23	402	68.76	259.1	
24	426	23.85	84.8	
25	465	18.78	61.2	
26	484	56.76	177.9	

Assay Class: High Sensitivity DNA Assay
 Data Path: C:\...ents and Settings\Bioanalyzer\2012-08-07\2012-08-07_001.xad


Created: 8/7/2012 10:08:15 AM
 Modified: 8/7/2012 10:49:40 AM

Electropherogram Summary Continued ...

... Peak table for sample 2 : smPCR EM-HI-2

Peak	Size [bp]	Conc. [pg/μl]	Molarity [pmol/l]	Observations
27	499	70.06	212.6	
28	598	17.84	45.2	
29	626	11.95	28.9	
30	711	7.86	16.8	
31	793	9.06	17.3	
32	982	3.94	6.1	
33	1,455	10.03	10.4	
34	1,808	6.99	5.9	
35	1,891	9.32	7.5	
36	2,492	3.44	2.1	
37	▶ 10,380	75.00	10.9	Upper Marker

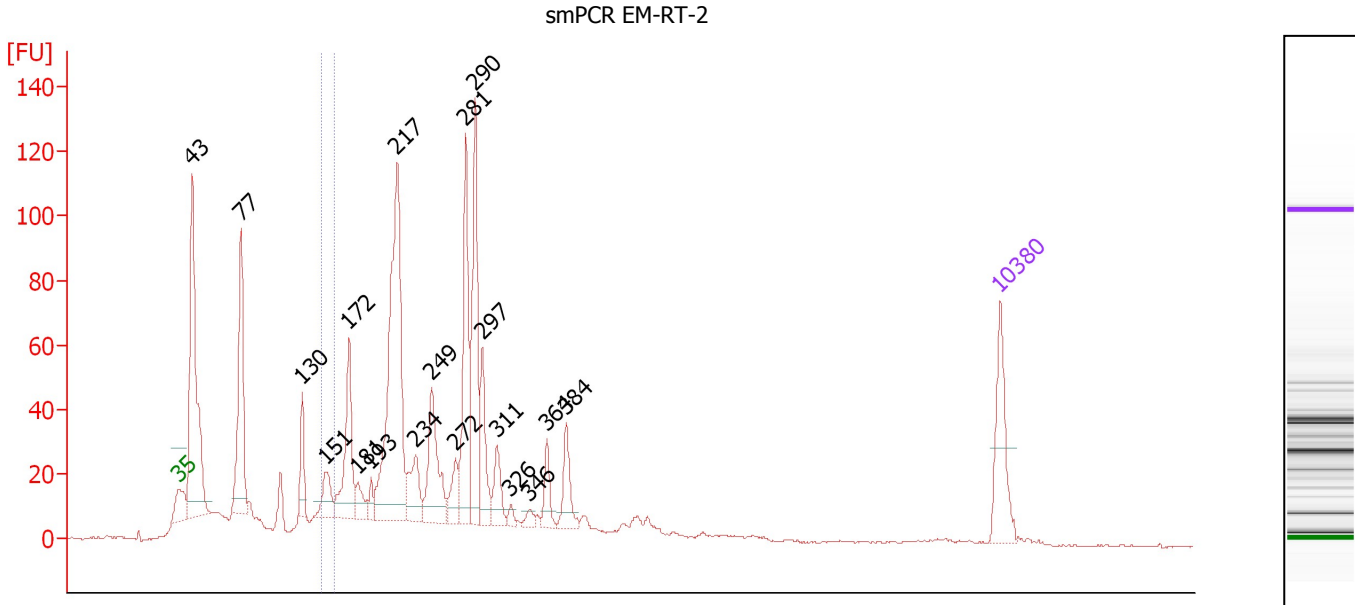
Region table for sample 2 : smPCR EM-HI-2

From [bp]	To [bp]	Average Size [bp]	Molarity [pmol/l]	Conc. [pg/μl]	Corr. Area	% of Total	Size distribution in CV [%]	Color
147	160	153	2,262.3	228.45	114.6	3	2.4	

Assay Class: High Sensitivity DNA Assay
 Data Path: C:\...ents and Settings\Bioanalyzer\2012-08-07\2012-08-07_001.xad

Created: 8/7/2012 10:08:15 AM
 Modified: 8/7/2012 10:49:40 AM

Electropherogram Summary Continued ...



Overall Results for sample 3 : smPCR EM-RT-2

Number of peaks found: 19 Corr. Area 1: 38.4
 Noise: 0.3

Peak table for sample 3 : smPCR EM-RT-2

Peak	Size [bp]	Conc. [pg/μl]	Molarity [pmol/l]	Observations
1	35	125.00	5,411.3	Lower Marker
2	43	431.30	15,330.8	
3	77	240.95	4,723.1	
4	130	60.35	705.3	
5	151	53.47	534.9	
6	172	149.49	1,313.2	
7	181	35.58	298.2	
8	193	19.74	155.3	
9	217	460.24	3,218.0	
10	234	68.85	445.7	
11	249	132.60	807.1	
12	272	41.12	229.3	
13	281	195.53	1,053.7	
14	290	194.26	1,014.7	
15	297	83.62	427.3	
16	311	46.99	228.7	
17	326	9.52	44.3	
18	346	10.89	47.7	
19	364	34.43	143.2	
20	384	51.07	201.2	
21	10,380	75.00	10.9	Upper Marker

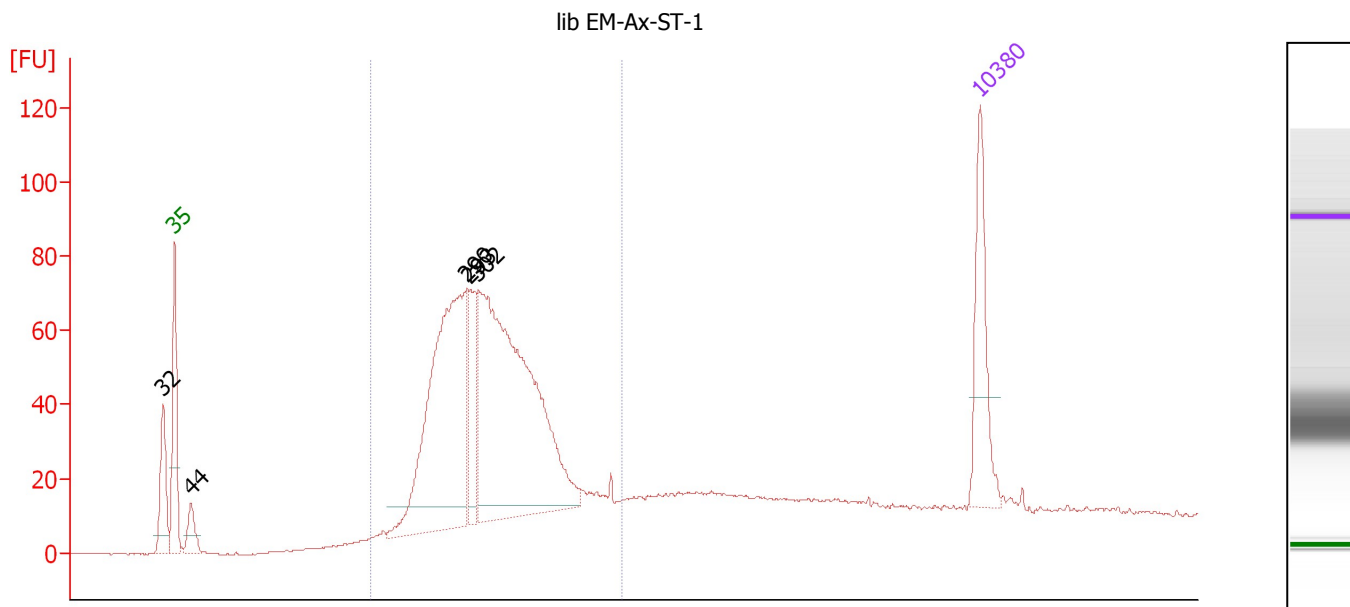
Region table for sample 3 : smPCR EM-RT-2

From [bp]	To [bp]	Average Size [bp]	Molarity [pmol/l]	Conc. [pg/μl]	Corr. Area	% of Total	Size distribution in CV [%]	Color
146	159	152	872.6	87.49	38.4	2	2.2	Blue

Assay Class: High Sensitivity DNA Assay
 Data Path: C:\...ents and Settings\Bioanalyzer\2012-08-07\2012-08-07_001.xad

Created: 8/7/2012 10:08:15 AM
 Modified: 8/7/2012 10:49:40 AM

Electropherogram Summary Continued ...



Overall Results for sample 4 : lib EM-Ax-ST-1

Number of peaks found: 5 Corr. Area 1: 1,070.3
 Noise: 0.2

Peak table for sample 4 : lib EM-Ax-ST-1

Peak	Size [bp]	Conc. [pg/μl]	Molarity [pmol/l]	Observations
1	32	0.00	0.0	
2	35	125.00	5,411.3	Lower Marker
3	44	34.29	1,169.8	
4	290	405.72	2,116.1	
5	293	72.12	372.8	
6	302	545.79	2,738.0	
7	10,380	75.00	10.9	Upper Marker

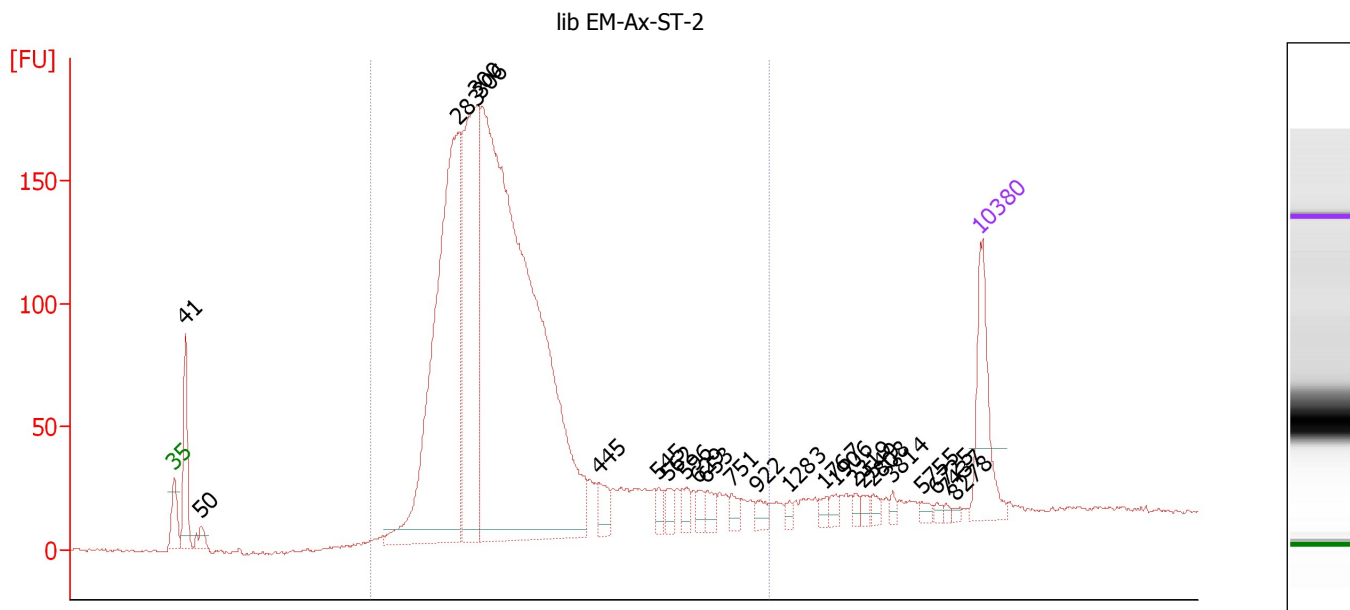
Region table for sample 4 : lib EM-Ax-ST-1

From [bp]	To [bp]	Average Size [bp]	Molarity [pmol/l]	Conc. [pg/μl]	Corr. Area	% of Total	Size distribution in CV [%]	Color
200	481	319	5,920.1	1,204.08	1,070.3	74	16.4	Blue

Assay Class: High Sensitivity DNA Assay
 Data Path: C:\...ents and Settings\Bioanalyzer\2012-08-07\2012-08-07_001.xad

Created: 8/7/2012 10:08:15 AM
 Modified: 8/7/2012 10:49:40 AM

Electropherogram Summary Continued ...



Overall Results for sample 5 : lib EM-Ax-ST-2

Number of peaks found: 24 Corr. Area 1: 2,692.4
 Noise: 0.5

Peak table for sample 5 : lib EM-Ax-ST-2

Peak	Size [bp]	Conc. [pg/μl]	Molarity [pmol/l]	Observations
1	35	125.00	5,411.3	Lower Marker
2	41	114.14	4,176.4	
3	50	18.53	562.2	
4	283	658.06	3,520.4	
5	306	408.10	2,059.2	
6	306	1,327.28	6,581.6	
7	445	26.94	91.6	
8	545	11.16	31.0	
9	562	14.02	37.8	
10	596	14.63	37.2	
11	629	11.71	28.2	
12	653	13.95	32.4	
13	751	11.73	23.7	
14	922	11.17	18.4	
15	1,283	5.59	6.6	
16	1,767	7.06	6.1	
17	1,906	6.93	5.5	
18	2,319	5.65	3.7	
19	2,549	6.15	3.7	
20	2,808	6.50	3.5	
21	3,814	4.95	2.0	
22	5,755	5.59	1.5	
23	6,725	3.89	0.9	
24	7,437	3.01	0.6	
25	8,278	2.64	0.5	
26	10,380	75.00	10.9	Upper Marker

Assay Class: High Sensitivity DNA Assay
Data Path: C:\...ents and Settings\Bioanalyzer\2012-08-07\2012-08-07_001.xad

Created: 8/7/2012 10:08:15 AM
Modified: 8/7/2012 10:49:40 AM

Electropherogram Summary Continued ...

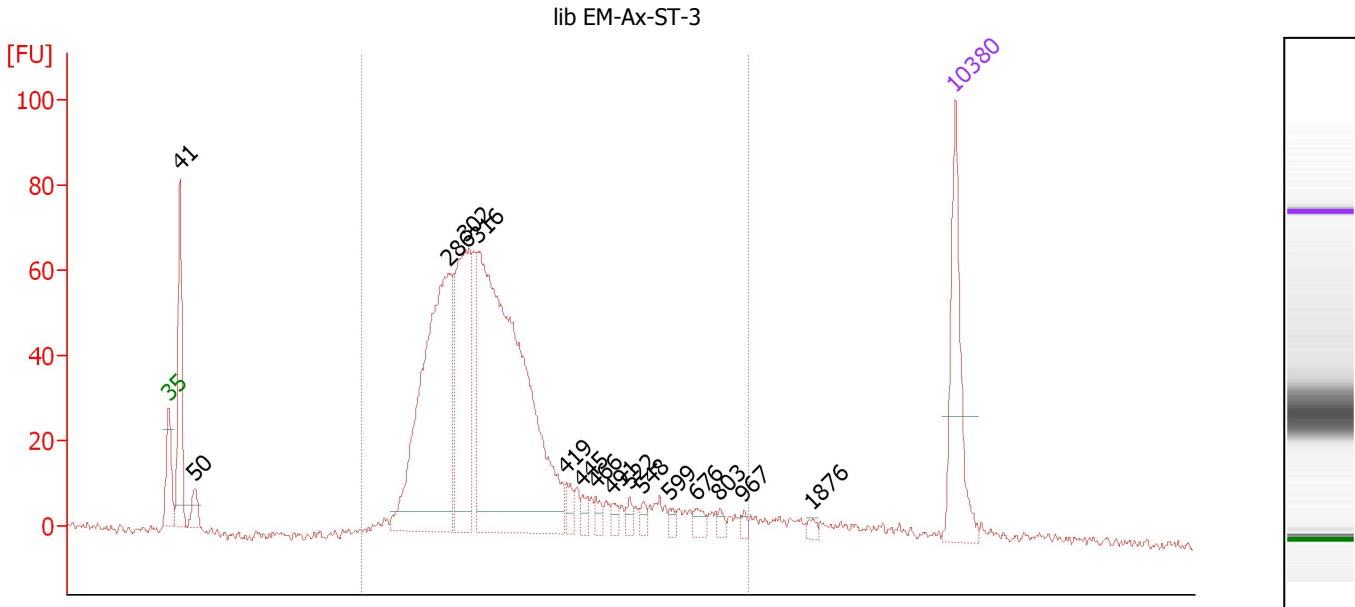
... Region table for sample 5 : lib EM-Ax-ST-2

From [bp]	To [bp]	Average Size [bp]	Molarity [pmol/l]	Conc. [pg/μl]	Corr. Area	% of Total	Size distribution in CV [%]	Color
200	1,000	352	11,794.8	2,516.12	2,692.4	90	32.1	

Assay Class: High Sensitivity DNA Assay
 Data Path: C:\...ents and Settings\Bioanalyzer\2012-08-07\2012-08-07_001.xad

Created: 8/7/2012 10:08:15 AM
 Modified: 8/7/2012 10:49:40 AM

Electropherogram Summary Continued ...



Overall Results for sample 6 : lib EM-Ax-ST-3

Number of peaks found: 16 Corr. Area 1: 1,097.0
 Noise: 1.2

Peak table for sample 6 : lib EM-Ax-ST-3

Peak	Size [bp]	Conc. [pg/μl]	Molarity [pmol/l]	Observations
1	35	125.00	5,411.3	Lower Marker
2	41	137.82	5,039.7	
3	50	21.15	640.7	
4	286	384.22	2,032.7	
5	302	203.67	1,021.2	
6	316	562.10	2,692.5	
7	419	12.66	45.8	
8	445	7.90	26.9	
9	466	8.49	27.6	
10	491	7.67	23.6	
11	522	7.21	20.9	
12	548	6.67	18.4	
13	599	4.97	12.6	
14	676	8.78	19.7	
15	803	5.91	11.2	
16	967	3.42	5.4	
17	1,876	4.08	3.3	
18	10,380	75.00	10.9	Upper Marker

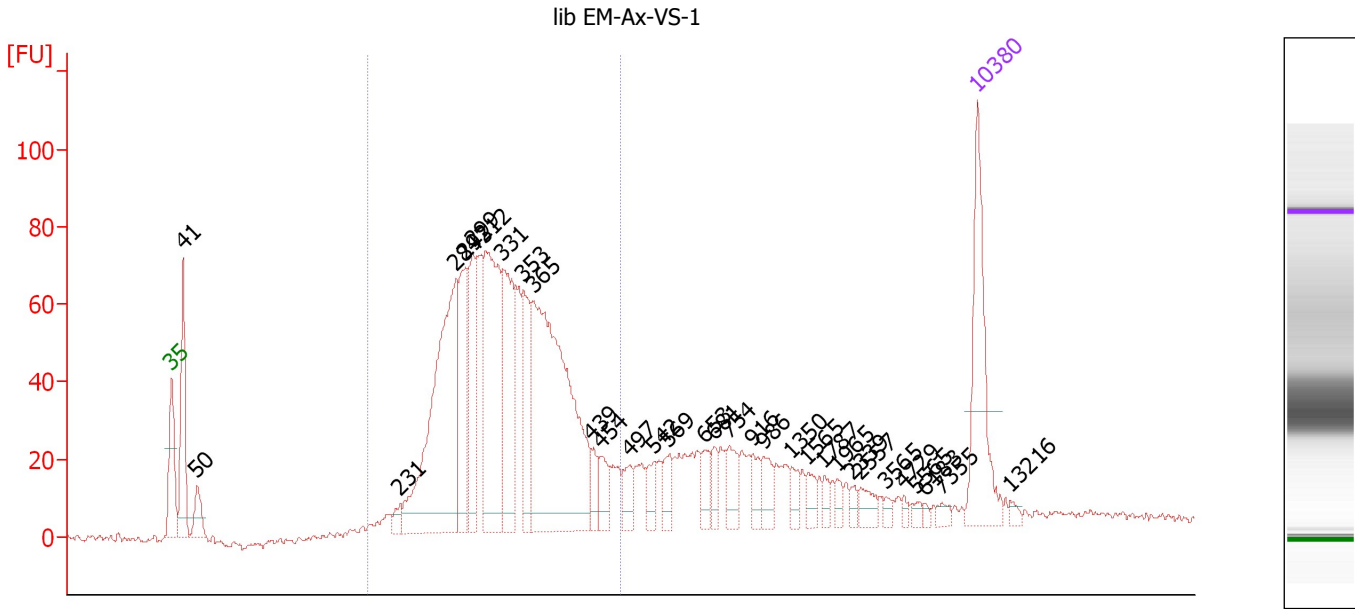
Region table for sample 6 : lib EM-Ax-ST-3

From [bp]	To [bp]	Average Size [bp]	Molarity [pmol/l]	Conc. [pg/μl]	Corr. Area	% of Total	Size distribution in CV [%]	Color
200	1,000	355	6,233.5	1,332.70	1,097.0	87	32.7	Blue

Assay Class: High Sensitivity DNA Assay
 Data Path: C:\...ents and Settings\Bioanalyzer\2012-08-07\2012-08-07_001.xad

Created: 8/7/2012 10:08:15 AM
 Modified: 8/7/2012 10:49:40 AM

Electropherogram Summary Continued ...



Overall Results for sample 7 : lib EM-Ax-VS-1

Number of peaks found: 32 Corr. Area 1: 1,250.2
 Noise: 1.0

Peak table for sample 7 : lib EM-Ax-VS-1

Peak	Size [bp]	Conc. [pg/μl]	Molarity [pmol/l]	Observations
1	35	125.00	5,411.3	Lower Marker
2	41	103.17	3,768.4	
3	50	26.91	823.5	
4	231	9.21	60.5	
5	284	271.91	1,452.0	
6	292	89.33	463.4	
7	299	80.99	409.8	
8	312	177.53	861.1	
9	331	116.67	533.5	
10	353	61.37	263.2	
11	365	309.43	1,284.1	
12	439	15.52	53.6	
13	454	22.18	74.0	
14	497	17.17	52.3	
15	542	15.97	44.7	
16	569	15.99	42.6	
17	653	16.55	38.4	
18	681	13.01	28.9	
19	754	23.07	46.4	
20	916	13.45	22.2	
21	986	16.09	24.7	
22	1,350	8.69	9.8	
23	1,565	10.38	10.0	
24	1,787	6.59	5.6	
25	1,965	6.00	4.6	
26	2,339	4.79	3.1	

Assay Class: High Sensitivity DNA Assay
 Data Path: C:\...ents and Settings\Bioanalyzer\2012-08-07\2012-08-07_001.xad


Created: 8/7/2012 10:08:15 AM
 Modified: 8/7/2012 10:49:40 AM

Electropherogram Summary Continued ...

... Peak table for sample 7 : lib EM-Ax-VS-1

Peak	Size [bp]	Conc. [pg/ μ l]	Molarity [pmol/l]	Observations
27	2,557	11.03	6.5	
28	3,565	4.09	1.7	
29	4,729	2.95	0.9	
30	5,565	3.93	1.1	
31	6,183	2.28	0.6	
32	7,355	5.07	1.0	
33	10,380	75.00	10.9	Upper Marker
34	13,216	0.00	0.0	

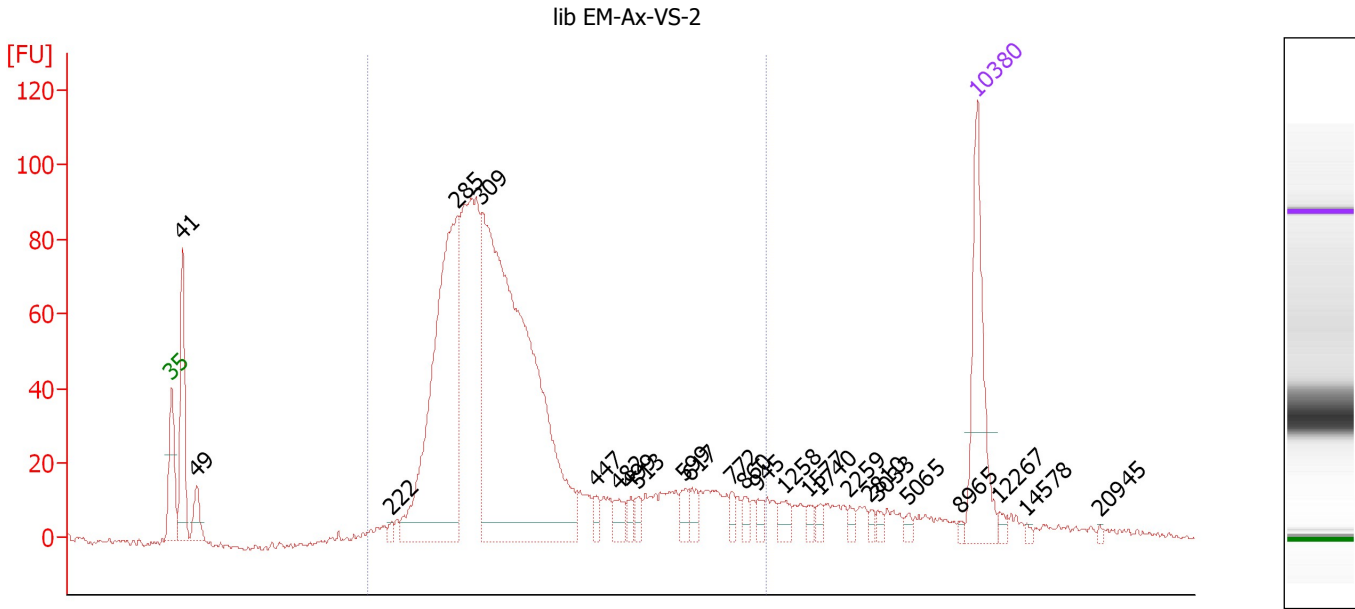
Region table for sample 7 : lib EM-Ax-VS-1

From [bp]	To [bp]	Average Size [bp]	Molarity [pmol/l]	Conc. [pg/ μ l]	Corr. Area	% of Total	Size distribution in CV [%]	Color
200	484	336	5,981.5	1,278.55	1,250.2	70	16.5	

Assay Class: High Sensitivity DNA Assay
 Data Path: C:\...ents and Settings\Bioanalyzer\2012-08-07\2012-08-07_001.xad

Created: 8/7/2012 10:08:15 AM
 Modified: 8/7/2012 10:49:40 AM

Electropherogram Summary Continued ...



Overall Results for sample 8 : lib EM-Ax-VS-2

Number of peaks found: 25 Corr. Area 1: 1,455.7
 Noise: 0.8

Peak table for sample 8 : lib EM-Ax-VS-2

Peak	Size [bp]	Conc. [pg/μl]	Molarity [pmol/l]	Observations
1	35	125.00	5,411.3	Lower Marker
2	41	109.11	4,016.4	
3	49	28.93	891.5	
4	222	5.31	36.3	
5	285	365.62	1,945.4	
6	309	634.01	3,105.8	
7	447	9.27	31.5	
8	482	12.66	39.8	
9	499	7.95	24.2	
10	513	8.62	25.4	
11	599	11.44	28.9	
12	617	11.40	28.0	
13	772	7.98	15.7	
14	860	7.35	12.9	
15	945	6.83	11.0	
16	1,258	9.46	11.4	
17	1,577	5.82	5.6	
18	1,740	4.76	4.1	
19	2,259	4.65	3.1	
20	2,810	3.50	1.9	
21	3,033	3.34	1.7	
22	5,065	3.76	1.1	
23	8,965	2.13	0.4	
24	10,380	75.00	10.9	Upper Marker
25	12,267	0.00	0.0	
26	14,578	0.00	0.0	


Assay Class: High Sensitivity DNA Assay
Data Path: C:\...ents and Settings\Bioanalyzer\2012-08-07\2012-08-07_001.xad

Created: 8/7/2012 10:08:15 AM
Modified: 8/7/2012 10:49:40 AM

Electropherogram Summary Continued ...**... Peak table for sample 8 : lib EM-Ax-VS-2**

Peak	Size [bp]	Conc. [pg/ μ l]	Molarity [pmol/l]	Observations
27	20,945	0.00	0.0	

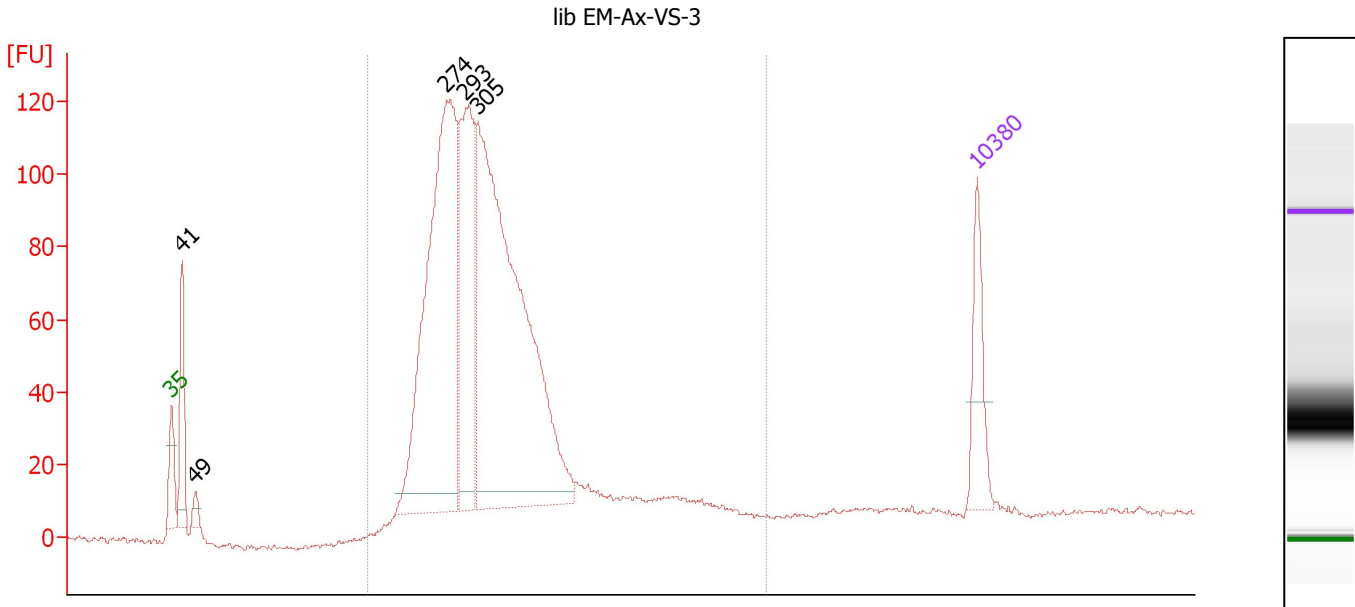
Region table for sample 8 : lib EM-Ax-VS-2

From [bp]	To [bp]	Average Size [bp]	Molarity [pmol/l]	Conc. [pg/ μ l]	Corr. Area	% of Total	Size distribution in CV [%]	Color
200	1,000	369	6,570.2	1,422.05	1,455.7	84	37.4	

Assay Class: High Sensitivity DNA Assay
 Data Path: C:\...ents and Settings\Bioanalyzer\2012-08-07\2012-08-07_001.xad

Created: 8/7/2012 10:08:15 AM
 Modified: 8/7/2012 10:49:40 AM

Electropherogram Summary Continued ...



Overall Results for sample 9 : lib EM-Ax-VS-3

Number of peaks found: 5 Corr. Area 1: 1,727.7
 Noise: 0.6

Peak table for sample 9 : lib EM-Ax-VS-3

Peak	Size [bp]	Conc. [pg/μl]	Molarity [pmol/l]	Observations
1	35	125.00	5,411.3	Lower Marker
2	41	138.52	5,137.3	
3	49	21.89	683.2	
4	274	794.50	4,388.0	
5	293	358.09	1,854.5	
6	305	1,000.84	4,978.9	
7	10,380	75.00	10.9	Upper Marker

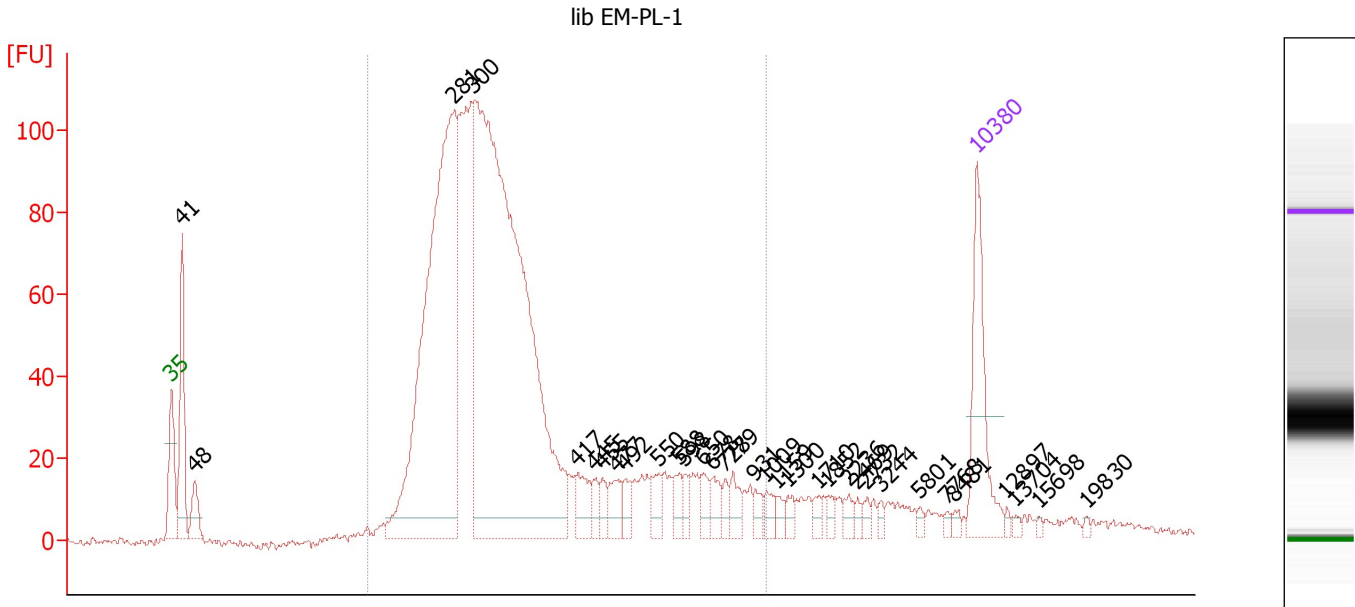
Region table for sample 9 : lib EM-Ax-VS-3

From [bp]	To [bp]	Average Size [bp]	Molarity [pmol/l]	Conc. [pg/μl]	Corr. Area	% of Total	Size distribution in CV [%]	Color
200	1,000	329	12,088.7	2,466.18	1,727.7	92	27.1	Blue

Assay Class: High Sensitivity DNA Assay
 Data Path: C:\...ents and Settings\Bioanalyzer\2012-08-07\2012-08-07_001.xad

Created: 8/7/2012 10:08:15 AM
 Modified: 8/7/2012 10:49:40 AM

Electropherogram Summary Continued ...



Overall Results for sample 10 : lib EM-PL-1

Number of peaks found: 33 Corr. Area 1: 1,775.3
 Noise: 1.0

Peak table for sample 10 : lib EM-PL-1

Peak	Size [bp]	Conc. [pg/μl]	Molarity [pmol/l]	Observations
1	35	125.00	5,411.3	Lower Marker
2	41	126.04	4,669.9	
3	48	33.06	1,043.0	
4	281	622.75	3,353.5	
5	300	956.76	4,827.6	
6	417	30.88	112.1	
7	445	12.24	41.7	
8	455	13.66	45.5	
9	477	22.39	71.1	
10	492	13.59	41.9	
11	550	18.25	50.3	
12	588	14.65	37.7	
13	598	11.11	28.1	
14	650	14.32	33.4	
15	678	16.31	36.5	
16	728	9.44	19.7	
17	779	16.91	32.9	
18	931	9.17	14.9	
19	1,009	10.00	15.0	
20	1,159	7.55	9.9	
21	1,300	7.25	8.4	
22	1,710	7.29	6.5	
23	1,852	6.78	5.5	
24	2,236	7.69	5.2	
25	2,469	4.43	2.7	
26	2,732	5.73	3.2	

Assay Class: High Sensitivity DNA Assay
 Data Path: C:\...ents and Settings\Bioanalyzer\2012-08-07\2012-08-07_001.xad

Created: 8/7/2012 10:08:15 AM
 Modified: 8/7/2012 10:49:40 AM

Electropherogram Summary Continued ...

... Peak table for sample 10 : lib EM-PL-1

Peak	Size [bp]	Conc. [pg/ μ l]	Molarity [pmol/l]	Observations
27	3,244	4.15	1.9	
28	5,801	3.73	1.0	
29	7,768	2.85	0.6	
30	8,481	4.10	0.7	
31	10,380	75.00	10.9	Upper Marker
32	12,897	0.00	0.0	
33	13,704	0.00	0.0	
34	15,698	0.00	0.0	
35	19,830	0.00	0.0	

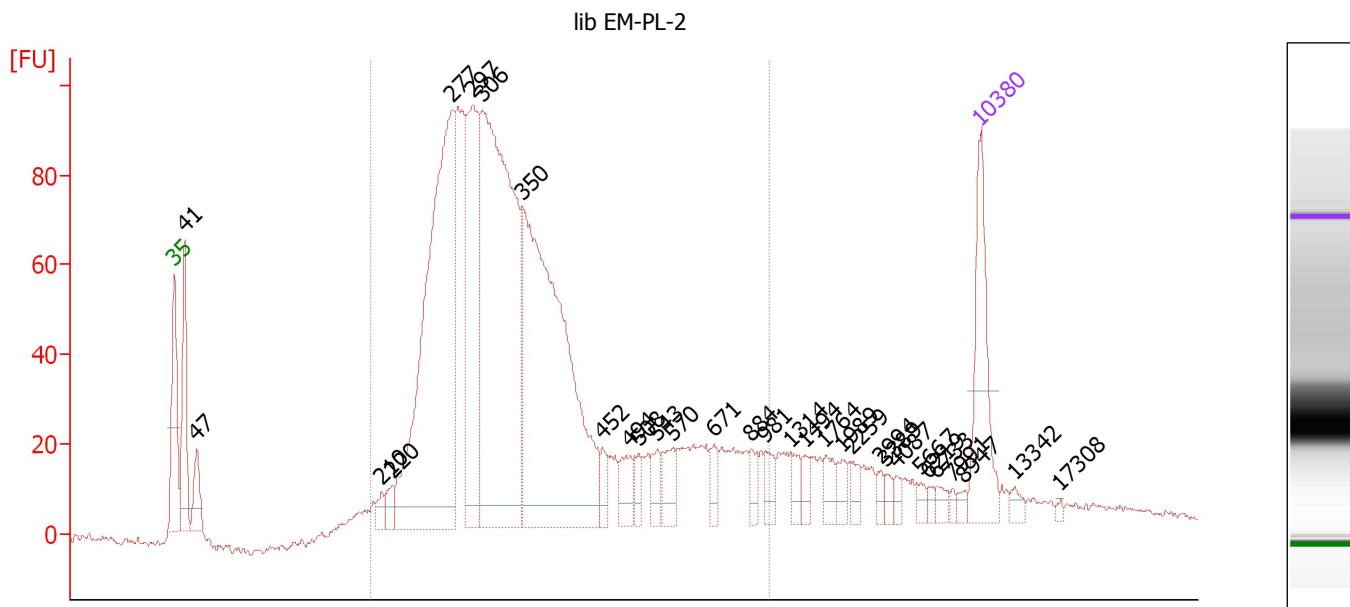
Region table for sample 10 : lib EM-PL-1

From [bp]	To [bp]	Average Size [bp]	Molarity [pmol/l]	Conc. [pg/ μ l]	Corr. Area	% of Total	Size distribution in CV [%]	Color
200	1,000	362	9,958.5	2,110.71	1,775.3	86	37.5	

Assay Class: High Sensitivity DNA Assay
 Data Path: C:\...ents and Settings\Bioanalyzer\2012-08-07\2012-08-07_001.xad

Created: 8/7/2012 10:08:15 AM
 Modified: 8/7/2012 10:49:40 AM

Electropherogram Summary Continued ...



Overall Results for sample 11 : lib EM-PL-2

Number of peaks found: 31 Corr. Area 1: 1,924.7
 Noise: 0.7

Peak table for sample 11 : lib EM-PL-2

Peak	Size [bp]	Conc. [pg/μl]	Molarity [pmol/l]	Observations
1	35	125.00	5,411.3	Lower Marker
2	41	110.70	4,129.4	
3	47	40.83	1,302.9	
4	210	13.11	94.5	
5	220	16.77	115.3	
6	277	530.95	2,907.3	
7	297	205.30	1,048.2	
8	306	551.20	2,724.9	
9	350	501.26	2,168.5	
10	452	16.09	54.0	
11	494	26.61	81.6	
12	508	14.36	42.8	
13	543	17.33	48.3	
14	570	26.22	69.7	
15	671	15.00	33.9	
16	884	12.76	21.9	
17	981	15.57	24.0	
18	1,314	11.95	13.8	
19	1,494	10.08	10.2	
20	1,764	14.02	12.0	
21	1,989	11.26	8.6	
22	2,259	9.59	6.4	
23	2,994	6.25	3.2	
24	3,389	6.22	2.8	
25	4,087	5.60	2.1	
26	5,667	6.25	1.7	

Assay Class: High Sensitivity DNA Assay
 Data Path: C:\...ents and Settings\Bioanalyzer\2012-08-07\2012-08-07_001.xad

Created: 8/7/2012 10:08:15 AM
 Modified: 8/7/2012 10:49:40 AM

Electropherogram Summary Continued ...

... Peak table for sample 11 : lib EM-PL-2

Peak	Size [bp]	Conc. [pg/μl]	Molarity [pmol/l]	Observations
27	6,219	4.00	1.0	
28	6,733	6.76	1.5	
29	7,991	3.41	0.6	
30	8,947	4.68	0.8	
31	10,380	75.00	10.9	Upper Marker
32	13,342	0.00	0.0	
33	17,308	0.00	0.0	

Region table for sample 11 : lib EM-PL-2

From [bp]	To [bp]	Average Size [bp]	Molarity [pmol/l]	Conc. [pg/μl]	Corr. Area	% of Total	Size distribution in CV [%]	Color
200	1,000	376	10,792.4	2,338.81	1,924.7	83	38.9	

Assay Class: High Sensitivity DNA Assay
Data Path: C:\...ents and Settings\Bioanalyzer\2012-08-07\2012-08-07_001.xad

Created: 8/7/2012 10:08:15 AM
Modified: 8/7/2012 10:49:40 AM

Gel Image

