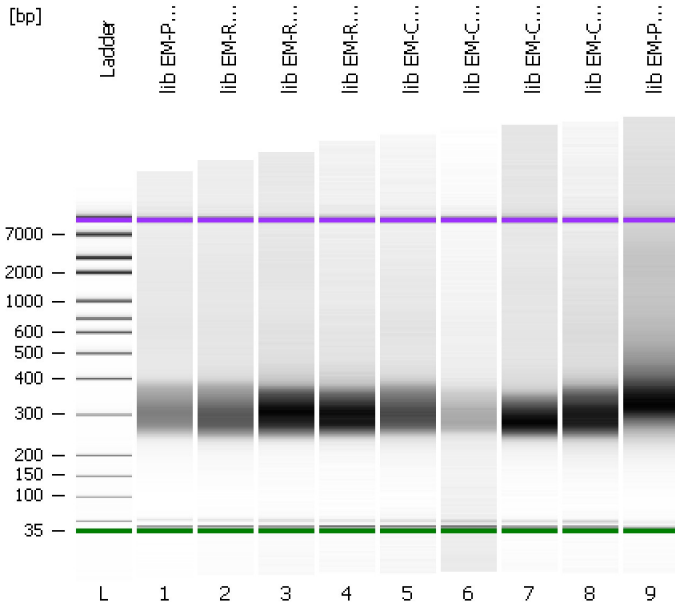


Assay Class: High Sensitivity DNA Assay  
Data Path: C:\...nts and Settings\Bioanalyzer\2012-08-07\2012-08-07\_002A.xad

Created: 8/7/2012 10:55:07 AM  
Modified: 8/7/2012 11:33:46 AM

Electrophoresis File Run Summary



Instrument Information:

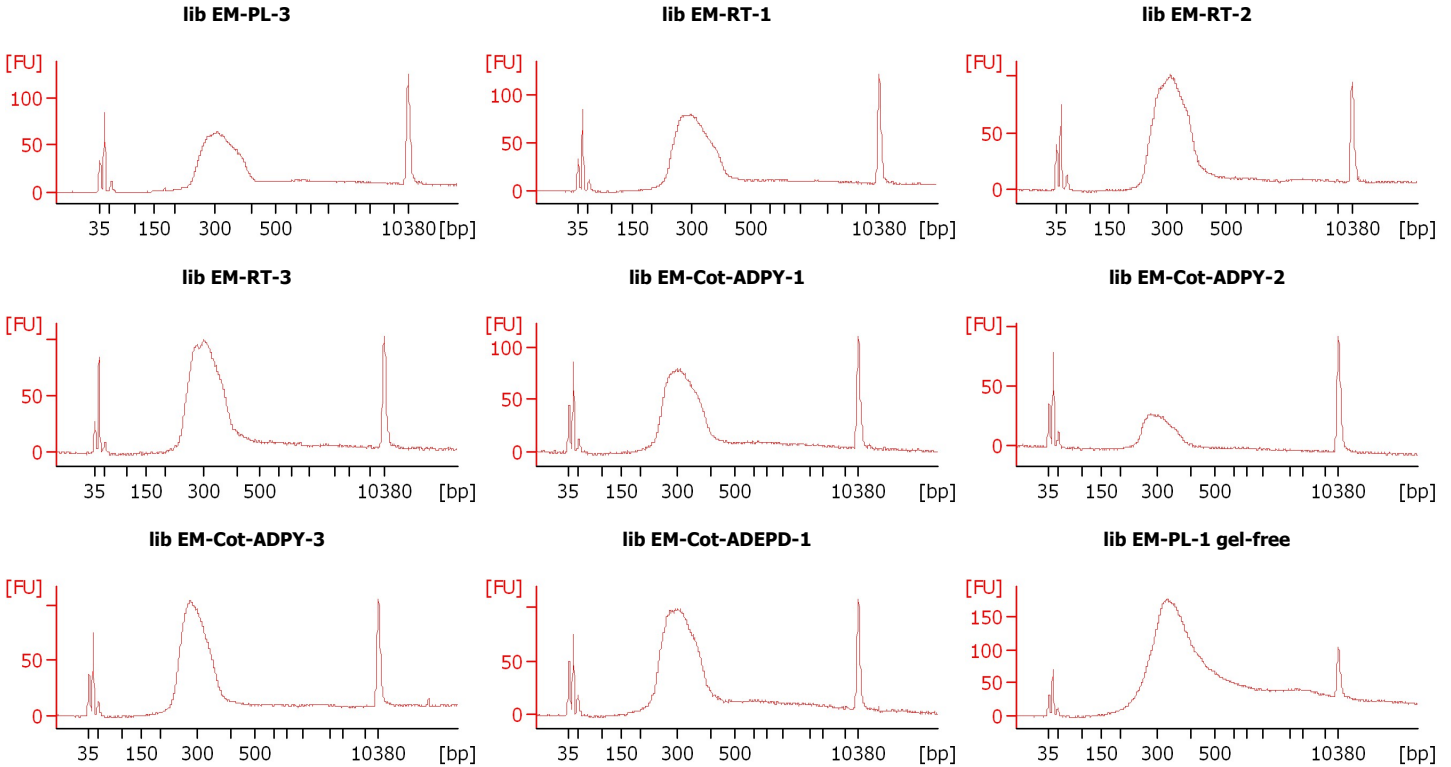
Instrument Name: DE13701086      Firmware: C.01.069  
Serial#: DE13701086      Type: G2938B

Assay Information:

Assay Origin Path: C:\Program Files\Agilent\2100 bioanalyzer\2100 expert\assays\dsDNA\High Sensitivity DNA.xsy  
Assay Class: High Sensitivity DNA Assay  
Version: 1.03  
Assay Comments: Copyright © 2003-2010 Agilent Technologies

Chip Information:

Chip Lot #:   
Reagent Kit Lot #:   
Chip Comments:



Assay Class: High Sensitivity DNA Assay  
 Data Path: C:\...nts and Settings\Bioanalyzer\2012-08-07\2012-08-07\_002A.xad

Created: 8/7/2012 10:55:07 AM  
 Modified: 8/7/2012 11:33:46 AM

**Electrophoresis File Run Summary (Chip Summary)**

Sample Name	Sample Comment	Rest. Digest	Status	Observation	Result Label	Result Color
lib EM-PL-3		<input type="checkbox"/>	✓			
lib EM-RT-1		<input type="checkbox"/>	✓			
lib EM-RT-2		<input type="checkbox"/>	✓			
lib EM-RT-3		<input type="checkbox"/>	✓			
lib EM-Cot-ADPY-1		<input type="checkbox"/>	✓			
lib EM-Cot-ADPY-2		<input type="checkbox"/>	✓			
lib EM-Cot-ADPY-3		<input type="checkbox"/>	✓			
lib EM-Cot-ADEPD-1		<input type="checkbox"/>	✓			
lib EM-PL-1 gel-free		<input type="checkbox"/>	✓			
Ladder		<input type="checkbox"/>	✓			

Chip Lot #

Reagent Kit Lot #

Chip Comments :

Assay Class: High Sensitivity DNA Assay  
Data Path: C:\...nts and Settings\Bioanalyzer\2012-08-07\2012-08-07\_002A.xad

Created: 8/7/2012 10:55:07 AM  
Modified: 8/7/2012 11:33:46 AM

## Electrophoresis Assay Details

### General Analysis Settings

Number of Available Sample and Ladder Wells (Max.) : 12  
Minimum Visible Range [s] : 32  
Maximum Visible Range [s] : 138  
Start Analysis Time Range [s] : 33  
End Analysis Time Range [s] : 137.5  
Ladder Concentration [pg/ $\mu$ l] : 1950  
Uses Standard Area for Ladder Fragments  
Lower Marker Concentration [pg/ $\mu$ l] : 125  
Upper Marker Concentration [pg/ $\mu$ l] : 75  
Used Upper Marker for Quantitation  
Standard Curve Fit is Point to Point  
Show Data Aligned to Lower and Upper Marker

### Integrator Settings

Integration Start Time [s] : 33.05  
Integration End Time [s] : 137  
Slope Threshold : 0.8  
Height Threshold [FU] : 5  
Area Threshold : 0.1  
Width Threshold [s] : 0.6  
Baseline Plateau [s] : 0.5

### Filter Settings

Filter Width [s] : 0.5  
Polynomial Order : 4

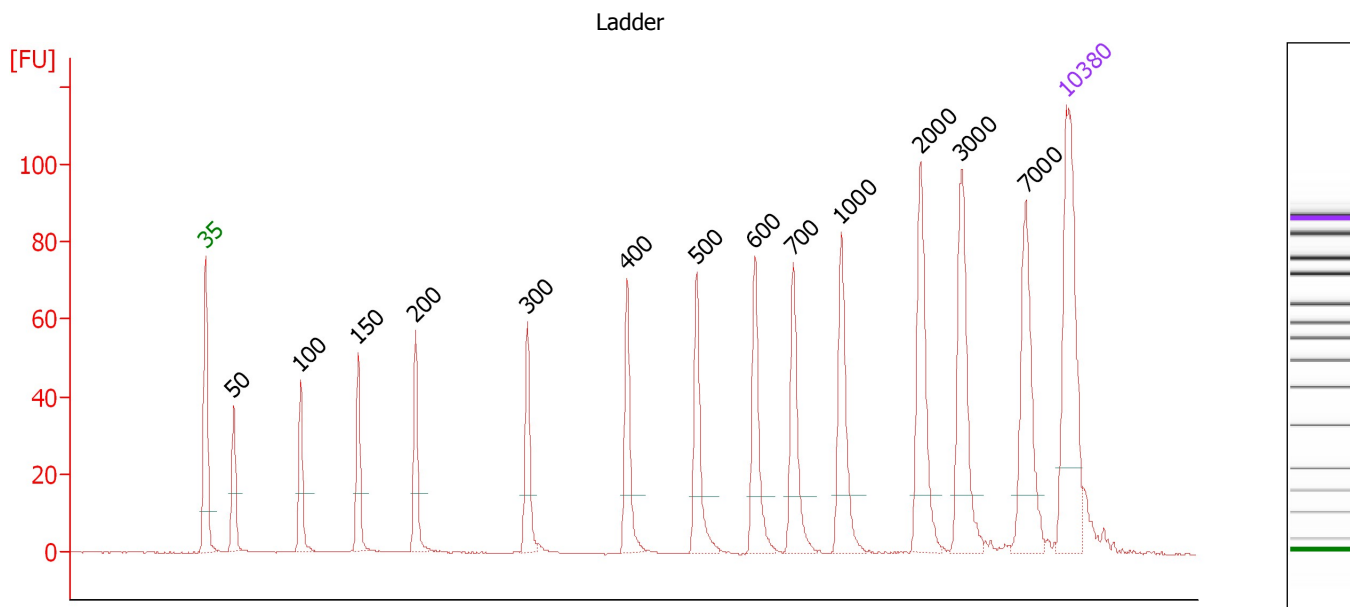
### Ladder

Ladder Peak	Size	Area
1	35	160
2	50	210
3	100	208
4	150	221
5	200	242
6	300	270
7	400	305
8	500	306
9	600	336
10	700	321
11	1000	366
12	2000	413
13	3000	411
14	7000	400
15	10380	214

Assay Class: High Sensitivity DNA Assay  
 Data Path: C:\...nts and Settings\Bioanalyzer\2012-08-07\2012-08-07\_002A.xad

Created: 8/7/2012 10:55:07 AM  
 Modified: 8/7/2012 11:33:46 AM

**Electropherogram Summary**



**Overall Results for Ladder**

Noise: 0.2

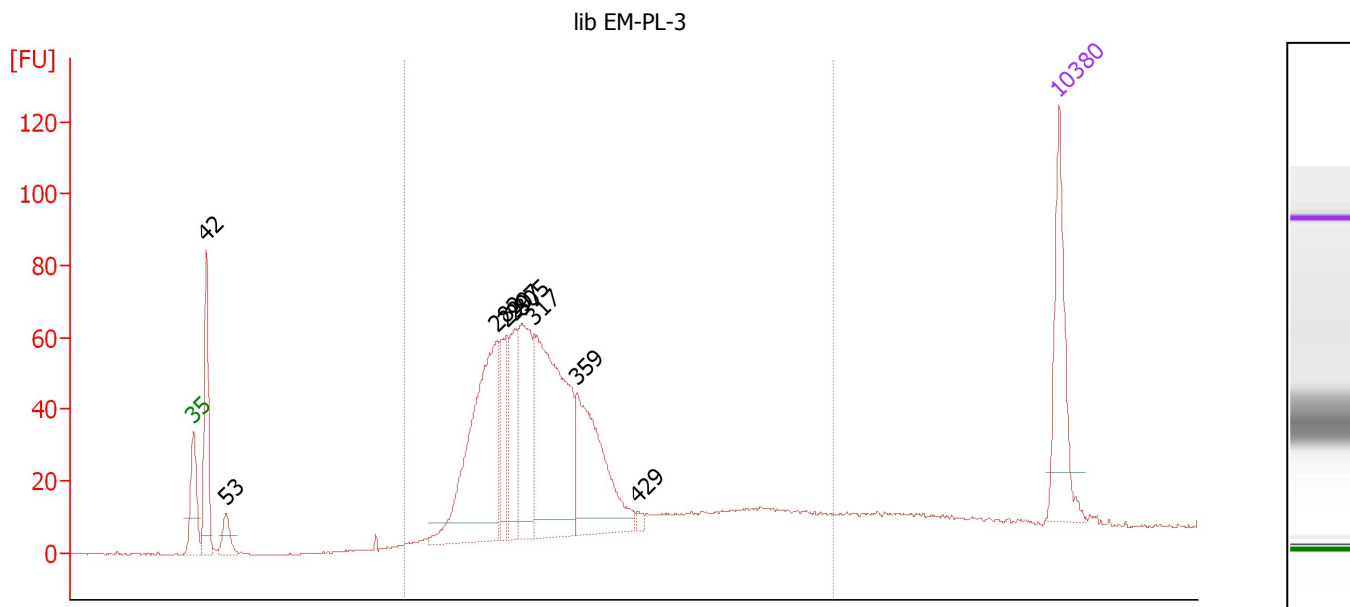
**Peak table for Ladder**

Peak	Size [bp]	Conc. [pg/μl]	Molarity [pmol/l]	Observations
1	35	125.00	5,411.3	Lower Marker
2	50	150.00	4,545.5	Ladder Peak
3	100	150.00	2,272.7	Ladder Peak
4	150	150.00	1,515.2	Ladder Peak
5	200	150.00	1,136.4	Ladder Peak
6	300	150.00	757.6	Ladder Peak
7	400	150.00	568.2	Ladder Peak
8	500	150.00	454.5	Ladder Peak
9	600	150.00	378.8	Ladder Peak
10	700	150.00	324.7	Ladder Peak
11	1,000	150.00	227.3	Ladder Peak
12	2,000	150.00	113.6	Ladder Peak
13	3,000	150.00	75.8	Ladder Peak
14	7,000	150.00	32.5	Ladder Peak
15	10,380	75.00	10.9	Upper Marker

Assay Class: High Sensitivity DNA Assay  
 Data Path: C:\...nts and Settings\Bioanalyzer\2012-08-07\2012-08-07\_002A.xad

Created: 8/7/2012 10:55:07 AM  
 Modified: 8/7/2012 11:33:46 AM

**Electropherogram Summary Continued ...**



**Overall Results for sample 1 : lib EM-PL-3**

Number of peaks found: 9                      Corr. Area 1: 1,060.8  
 Noise: 0.2

**Peak table for sample 1 : lib EM-PL-3**

Peak	Size [bp]	Conc. [pg/μl]	Molarity [pmol/l]	Observations
1	35	125.00	5,411.3	Lower Marker
2	42	135.90	4,931.3	
3	53	30.38	868.2	
4	282	275.54	1,480.9	
5	290	59.69	312.0	
6	297	74.24	378.1	
7	305	137.95	686.2	
8	317	281.83	1,347.8	
9	359	162.30	685.3	
10	429	4.01	14.2	
11	10,380	75.00	10.9	Upper Marker

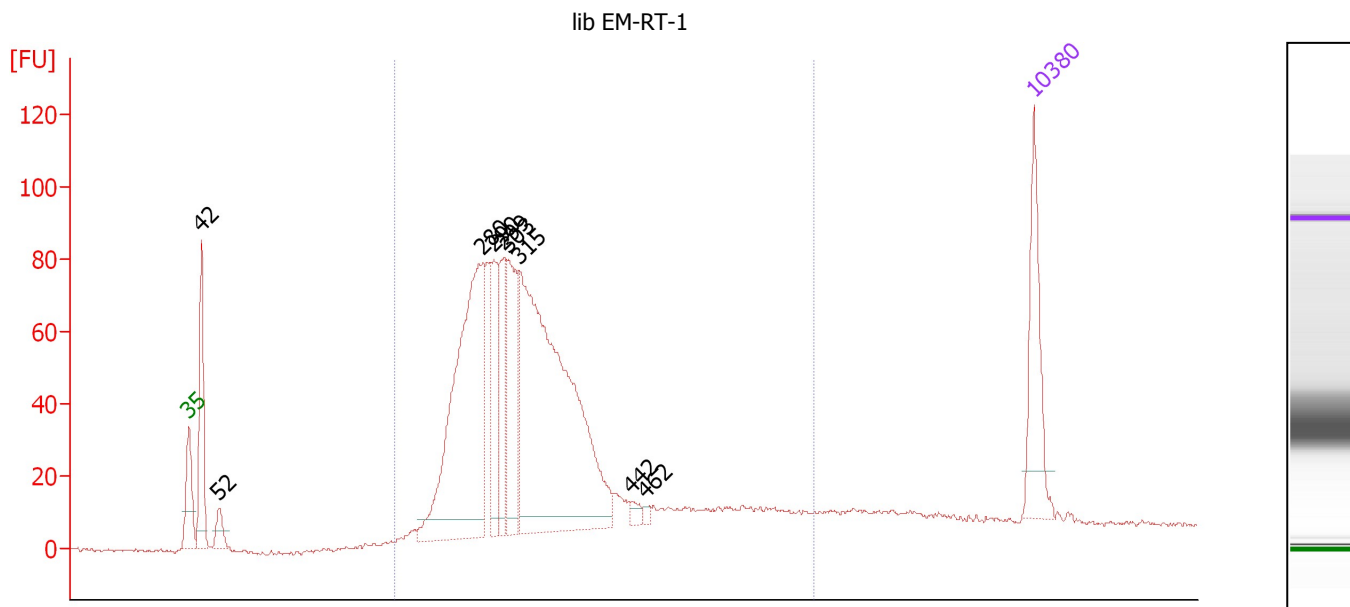
**Region table for sample 1 : lib EM-PL-3**

From [bp]	To [bp]	Average Size [bp]	Molarity [pmol/l]	Conc. [pg/μl]	Corr. Area	% of Total	Size distribution in CV [%]	Color
200	1,000	365	5,601.3	1,208.69	1,060.8	85	36.1	Blue

Assay Class: High Sensitivity DNA Assay  
 Data Path: C:\...nts and Settings\Bioanalyzer\2012-08-07\2012-08-07\_002A.xad

Created: 8/7/2012 10:55:07 AM  
 Modified: 8/7/2012 11:33:46 AM

**Electropherogram Summary Continued ...**



**Overall Results for sample 2 : lib EM-RT-1**

Number of peaks found: 9                      Corr. Area 1: 1,368.0  
 Noise: 0.4

**Peak table for sample 2 : lib EM-RT-1**

Peak	Size [bp]	Conc. [pg/μl]	Molarity [pmol/l]	Observations
1	35	125.00	5,411.3	Lower Marker
2	42	141.66	5,120.7	
3	52	26.61	781.5	
4	280	435.03	2,352.9	
5	290	90.96	475.6	
6	299	89.27	452.4	
7	303	123.17	616.6	
8	315	596.10	2,870.7	
9	442	9.96	34.1	
10	462	4.43	14.5	
11	10,380	75.00	10.9	Upper Marker

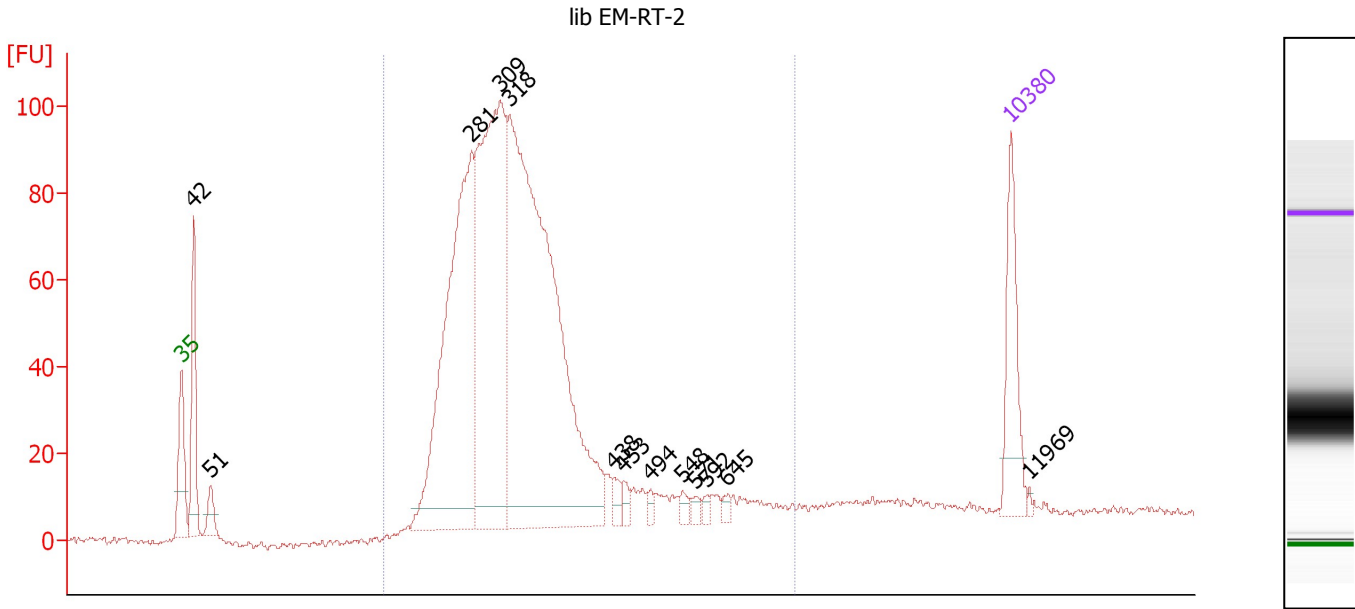
**Region table for sample 2 : lib EM-RT-1**

From [bp]	To [bp]	Average Size [bp]	Molarity [pmol/l]	Conc. [pg/μl]	Corr. Area	% of Total	Size distribution in CV [%]	Color
200	1,000	350	7,750.5	1,625.78	1,368.0	87	34.0	Blue

Assay Class: High Sensitivity DNA Assay  
 Data Path: C:\...nts and Settings\Bioanalyzer\2012-08-07\2012-08-07\_002A.xad

Created: 8/7/2012 10:55:07 AM  
 Modified: 8/7/2012 11:33:46 AM

**Electropherogram Summary Continued ...**



**Overall Results for sample 3 : lib EM-RT-2**

Number of peaks found: 13      Corr. Area 1: 1,556.6  
 Noise: 0.8

**Peak table for sample 3 : lib EM-RT-2**

Peak	Size [bp]	Conc. [pg/μl]	Molarity [pmol/l]	Observations
1	35	125.00	5,411.3	Lower Marker
2	42	143.22	5,197.4	
3	51	30.15	892.4	
4	281	549.30	2,959.9	
5	309	555.77	2,727.7	
6	318	899.33	4,283.0	
7	438	13.81	47.7	
8	453	11.35	38.0	
9	494	7.19	22.1	
10	548	8.60	23.8	
11	571	7.00	18.6	
12	592	6.22	15.9	
13	645	6.56	15.4	
14	10,380	75.00	10.9	Upper Marker
15	11,969	0.00	0.0	

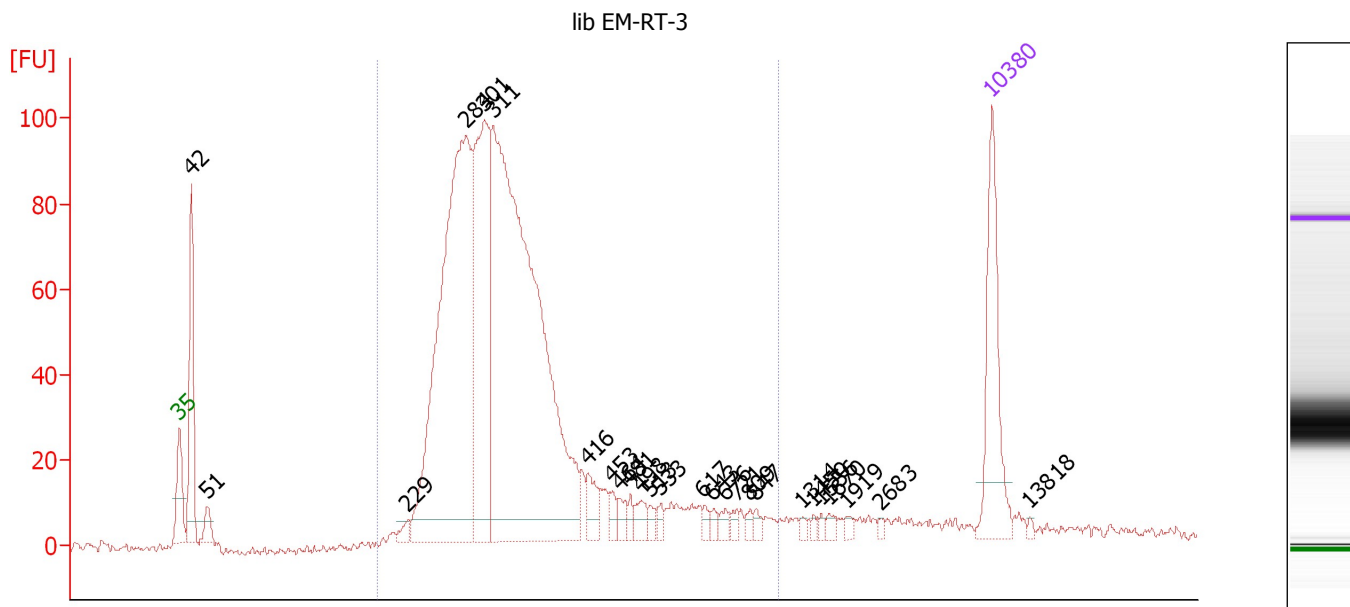
**Region table for sample 3 : lib EM-RT-2**

From [bp]	To [bp]	Average Size [bp]	Molarity [pmol/l]	Conc. [pg/μl]	Corr. Area	% of Total	Size distribution in CV [%]	Color
200	1,000	343	10,366.3	2,181.19	1,556.6	89	29.8	Blue

Assay Class: High Sensitivity DNA Assay  
 Data Path: C:\...nts and Settings\Bioanalyzer\2012-08-07\2012-08-07\_002A.xad

Created: 8/7/2012 10:55:07 AM  
 Modified: 8/7/2012 11:33:46 AM

**Electropherogram Summary Continued ...**



**Overall Results for sample 4 : lib EM-RT-3**

Number of peaks found: 26                      Corr. Area 1: 1,555.1  
 Noise: 1.0

**Peak table for sample 4 : lib EM-RT-3**

Peak	Size [bp]	Conc. [pg/μl]	Molarity [pmol/l]	Observations
1	35	125.00	5,411.3	Lower Marker
2	42	130.66	4,725.0	
3	51	18.55	553.0	
4	229	8.38	55.5	
5	284	554.39	2,952.9	
6	301	262.12	1,318.7	
7	311	748.31	3,648.0	
8	416	21.76	79.3	
9	453	9.90	33.1	
10	464	10.75	35.1	
11	481	7.09	22.4	
12	498	13.21	40.2	
13	513	5.98	17.6	
14	533	5.72	16.3	
15	617	5.36	13.2	
16	643	5.23	12.3	
17	676	7.13	16.0	
18	721	5.16	10.8	
19	809	4.62	8.7	
20	847	4.90	8.8	
21	1,314	2.88	3.3	
22	1,450	2.85	3.0	
23	1,556	2.84	2.8	
24	1,670	4.37	4.0	
25	1,919	3.21	2.5	
26	2,683	2.32	1.3	



Assay Class: High Sensitivity DNA Assay  
Data Path: C:\...nts and Settings\Bioanalyzer\2012-08-07\2012-08-07\_002A.xad

Created: 8/7/2012 10:55:07 AM  
Modified: 8/7/2012 11:33:46 AM

**Electropherogram Summary Continued ...****... Peak table for sample 4 : lib EM-RT-3**

Peak	Size [bp]	Conc. [pg/ $\mu$ l]	Molarity [pmol/l]	Observations
27	10,380	75.00	10.9	Upper Marker
28	13,818	0.00	0.0	

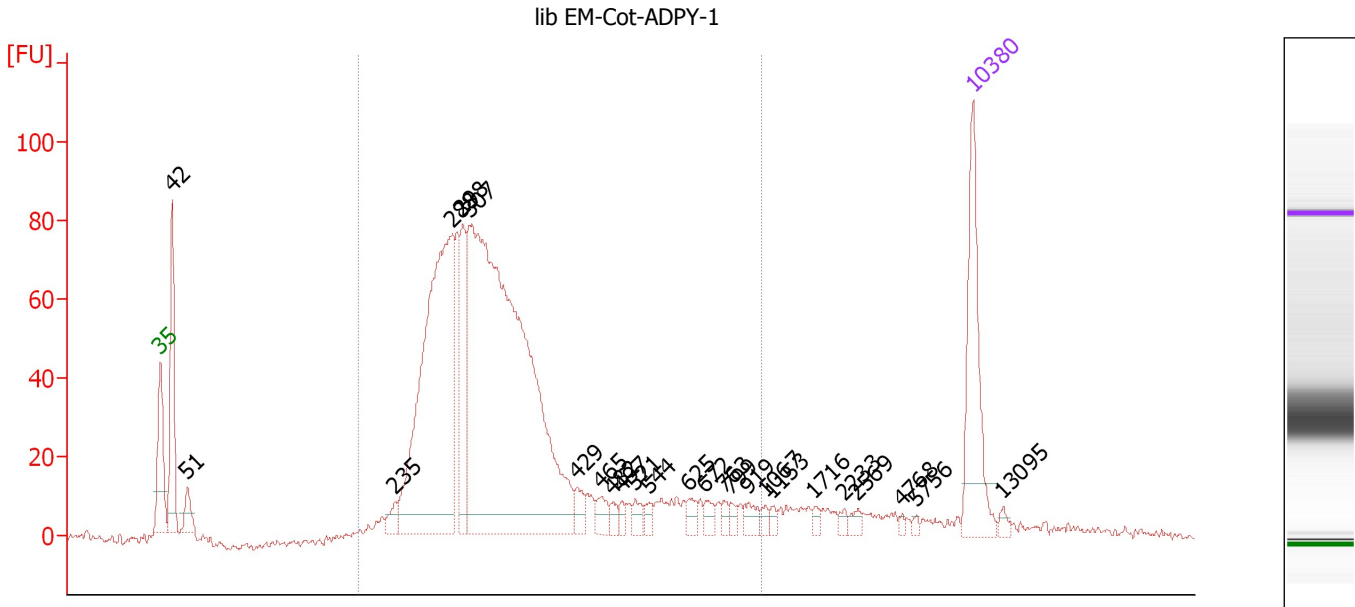
**Region table for sample 4 : lib EM-RT-3**

From [bp]	To [bp]	Average Size [bp]	Molarity [pmol/l]	Conc. [pg/ $\mu$ l]	Corr. Area	% of Total	Size distribution in CV [%]	Color
200	1,000	346	8,276.2	1,735.80	1,555.1	88	31.8	

Assay Class: High Sensitivity DNA Assay  
 Data Path: C:\...nts and Settings\Bioanalyzer\2012-08-07\2012-08-07\_002A.xad

Created: 8/7/2012 10:55:07 AM  
 Modified: 8/7/2012 11:33:46 AM

**Electropherogram Summary Continued ...**



**Overall Results for sample 5 : lib EM-Cot-ADPY-1**

Number of peaks found: 25                      Corr. Area 1: 1,322.7  
 Noise: 1.1

**Peak table for sample 5 : lib EM-Cot-ADPY-1**

Peak	Size [bp]	Conc. [pg/μl]	Molarity [pmol/l]	Observations
1	35	125.00	5,411.3	Lower Marker
2	42	124.08	4,508.5	
3	51	23.10	689.9	
4	235	12.50	80.6	
5	288	411.21	2,162.5	
6	298	80.28	407.8	
7	307	753.24	3,721.0	
8	429	12.91	45.6	
9	465	13.59	44.3	
10	482	7.29	22.9	
11	497	6.02	18.4	
12	521	9.01	26.2	
13	544	6.94	19.3	
14	625	8.97	21.7	
15	672	8.82	19.9	
16	763	5.26	10.4	
17	799	4.83	9.2	
18	919	9.46	15.6	
19	1,067	4.69	6.7	
20	1,153	4.32	5.7	
21	1,716	4.14	3.7	
22	2,233	3.95	2.7	
23	2,569	4.88	2.9	
24	4,768	2.13	0.7	
25	5,756	2.48	0.7	
26	10,380	75.00	10.9	Upper Marker

Assay Class: High Sensitivity DNA Assay  
Data Path: C:\...nts and Settings\Bioanalyzer\2012-08-07\2012-08-07\_002A.xad

Created: 8/7/2012 10:55:07 AM  
Modified: 8/7/2012 11:33:46 AM

**Electropherogram Summary Continued ...****... Peak table for sample 5 : lib EM-Cot-ADPY-1**

Peak	Size [bp]	Conc. [pg/ $\mu$ l]	Molarity [pmol/l]	Observations
27	13,095	0.00	0.0	

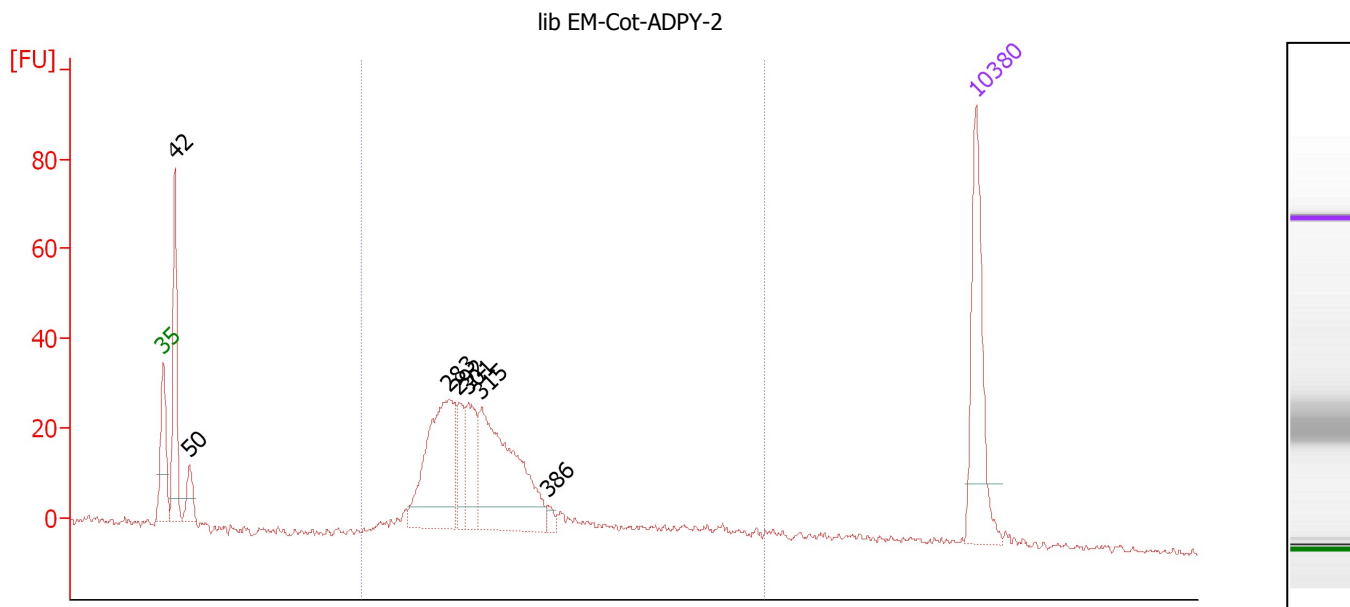
**Region table for sample 5 : lib EM-Cot-ADPY-1**

From [bp]	To [bp]	Average Size [bp]	Molarity [pmol/l]	Conc. [pg/ $\mu$ l]	Corr. Area	% of Total	Size distribution in CV [%]	Color
200	1,000	359	6,641.1	1,422.89	1,322.7	86	34.8	

Assay Class: High Sensitivity DNA Assay  
 Data Path: C:\...nts and Settings\Bioanalyzer\2012-08-07\2012-08-07\_002A.xad

Created: 8/7/2012 10:55:07 AM  
 Modified: 8/7/2012 11:33:46 AM

**Electropherogram Summary Continued ...**



**Overall Results for sample 6 : lib EM-Cot-ADPY-2**

Number of peaks found: 7                      Corr. Area 1: 388.8  
 Noise: 0.5

**Peak table for sample 6 : lib EM-Cot-ADPY-2**

Peak	Size [bp]	Conc. [pg/μl]	Molarity [pmol/l]	Observations
1	35	125.00	5,411.3	Lower Marker
2	42	131.91	4,785.5	
3	50	29.16	887.9	
4	283	164.53	882.0	
5	292	32.80	169.9	
6	301	55.41	278.6	
7	315	180.47	867.3	
8	386	6.69	26.3	
9	10,380	75.00	10.9	Upper Marker

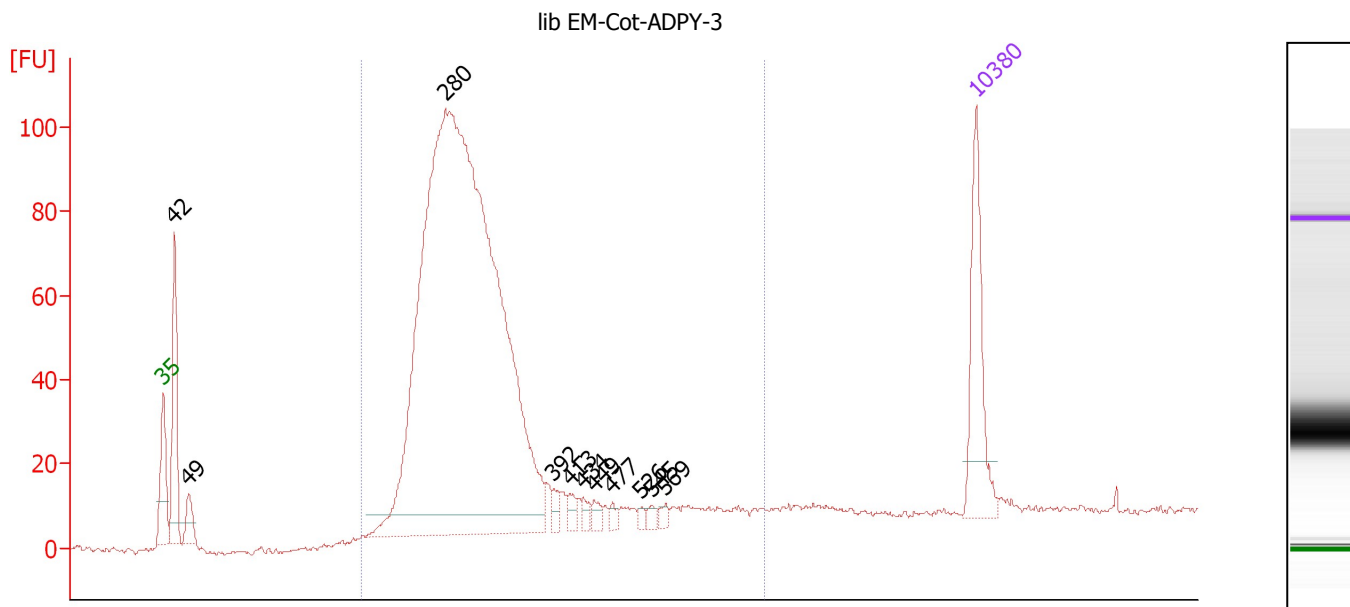
**Region table for sample 6 : lib EM-Cot-ADPY-2**

From [bp]	To [bp]	Average Size [bp]	Molarity [pmol/l]	Conc. [pg/μl]	Corr. Area	% of Total	Size distribution in CV [%]	Color
200	1,000	331	2,304.4	473.77	388.8	79	27.4	Blue

Assay Class: High Sensitivity DNA Assay  
 Data Path: C:\...nts and Settings\Bioanalyzer\2012-08-07\2012-08-07\_002A.xad

Created: 8/7/2012 10:55:07 AM  
 Modified: 8/7/2012 11:33:46 AM

**Electropherogram Summary Continued ...**



**Overall Results for sample 7 : lib EM-Cot-ADPY-3**

Number of peaks found: 11      Corr. Area 1: 1,301.1  
 Noise: 0.4

**Peak table for sample 7 : lib EM-Cot-ADPY-3**

Peak	Size [bp]	Conc. [pg/μl]	Molarity [pmol/l]	Observations
1	35	125.00	5,411.3	Lower Marker
2	42	127.27	4,643.4	
3	49	28.53	876.8	
4	280	1,561.53	8,454.7	
5	392	10.00	38.7	
6	413	9.58	35.1	
7	434	8.40	29.3	
8	449	8.90	30.0	
9	477	5.97	19.0	
10	526	4.13	11.9	
11	545	5.65	15.7	
12	569	5.83	15.5	
13	10,380	75.00	10.9	Upper Marker

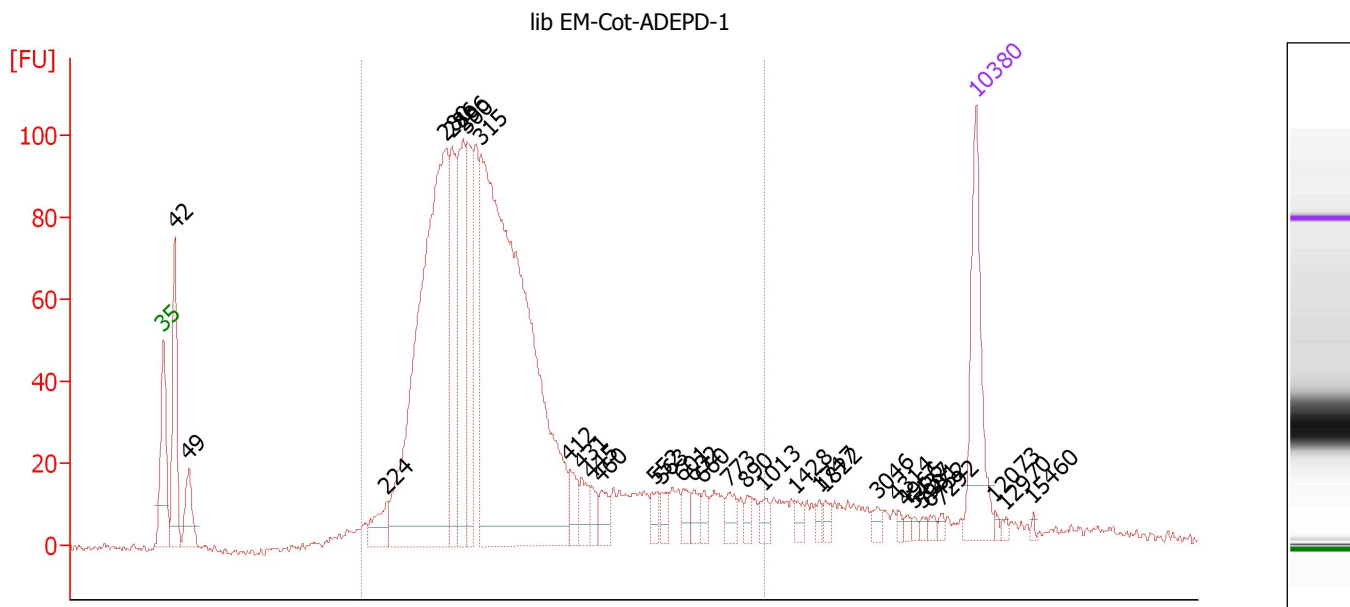
**Region table for sample 7 : lib EM-Cot-ADPY-3**

From [bp]	To [bp]	Average Size [bp]	Molarity [pmol/l]	Conc. [pg/μl]	Corr. Area	% of Total	Size distribution in CV [%]	Color
200	1,000	324	8,123.5	1,623.25	1,301.1	90	29.9	Blue

Assay Class: High Sensitivity DNA Assay  
 Data Path: C:\...nts and Settings\Bioanalyzer\2012-08-07\2012-08-07\_002A.xad

Created: 8/7/2012 10:55:07 AM  
 Modified: 8/7/2012 11:33:46 AM

**Electropherogram Summary Continued ...**



**Overall Results for sample 8 : lib EM-Cot-ADEPD-1**

Number of peaks found: 33                      Corr. Area 1: 1,752.1  
 Noise: 1.1

**Peak table for sample 8 : lib EM-Cot-ADEPD-1**

Peak	Size [bp]	Conc. [pg/μl]	Molarity [pmol/l]	Observations
1	35	125.00	5,411.3	Lower Marker
2	42	124.99	4,555.9	
3	49	48.95	1,501.6	
4	224	34.17	230.7	
5	280	568.91	3,079.5	
6	286	114.00	604.7	
7	296	147.04	753.6	
8	300	111.95	565.8	
9	315	782.07	3,767.0	
10	412	21.19	77.9	
11	431	18.38	64.6	
12	445	11.68	39.8	
13	460	17.27	56.8	
14	552	12.46	34.2	
15	563	11.58	31.2	
16	601	12.10	30.5	
17	632	12.32	29.6	
18	660	8.60	19.8	
19	773	14.11	27.6	
20	890	7.16	12.2	
21	1,013	9.98	14.9	
22	1,428	7.11	7.5	
23	1,747	5.04	4.4	
24	1,822	6.07	5.0	
25	3,046	6.24	3.1	
26	4,314	3.46	1.2	

Assay Class: High Sensitivity DNA Assay  
 Data Path: C:\...nts and Settings\Bioanalyzer\2012-08-07\2012-08-07\_002A.xad


Created: 8/7/2012 10:55:07 AM  
 Modified: 8/7/2012 11:33:46 AM

### Electropherogram Summary Continued ...

#### ... Peak table for sample 8 : lib EM-Cot-ADEPD-1

Peak	Size [bp]	Conc. [pg/μl]	Molarity [pmol/l]	Observations
27	4,966	2.93	0.9	
28	5,437	2.67	0.7	
29	5,981	2.90	0.7	
30	6,452	3.78	0.9	
31	7,292	3.18	0.7	
32	10,380	75.00	10.9	Upper Marker
33	12,073	0.00	0.0	
34	12,970	0.00	0.0	
35	15,460	0.00	0.0	

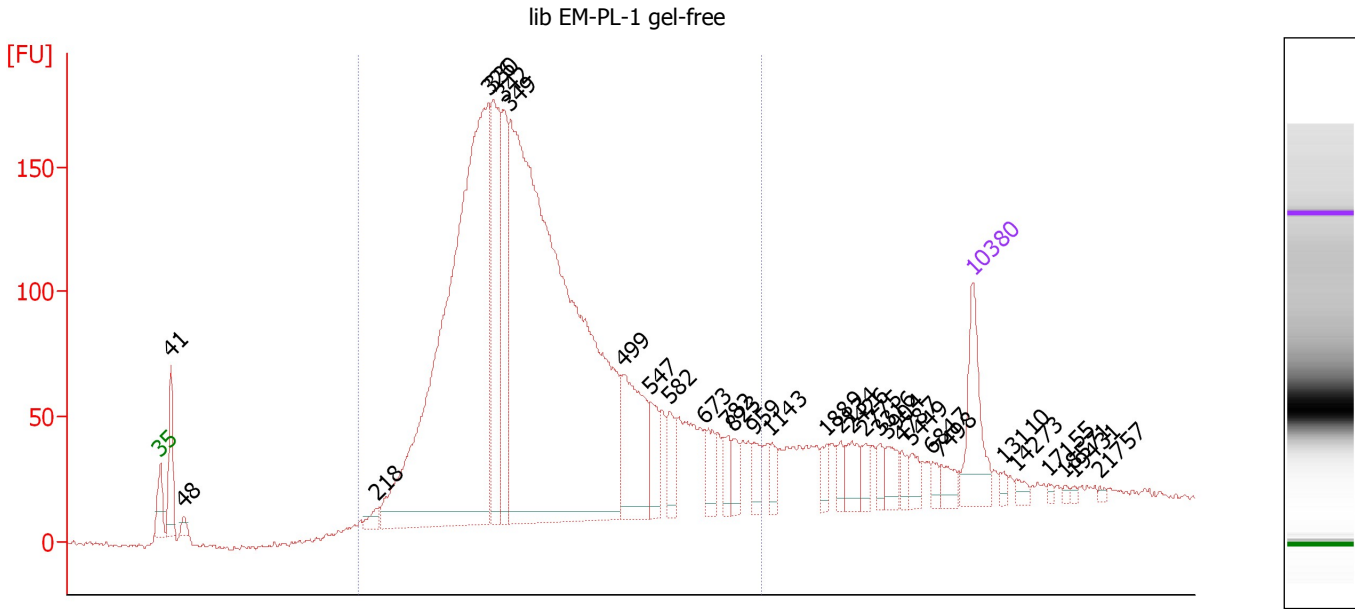
#### Region table for sample 8 : lib EM-Cot-ADEPD-1

From [bp]	To [bp]	Average Size [bp]	Molarity [pmol/l]	Conc. [pg/μl]	Corr. Area	% of Total	Size distribution in CV [%]	Color
200	1,000	358	9,770.4	2,060.96	1,752.1	86	36.5	

Assay Class: High Sensitivity DNA Assay  
 Data Path: C:\...nts and Settings\Bioanalyzer\2012-08-07\2012-08-07\_002A.xad

Created: 8/7/2012 10:55:07 AM  
 Modified: 8/7/2012 11:33:46 AM

**Electropherogram Summary Continued ...**



**Overall Results for sample 9 : lib EM-PL-1 gel-free**

Number of peaks found: 31                      Corr. Area 1: 3,411.2  
 Noise: 1.1

**Peak table for sample 9 : lib EM-PL-1 gel-free**

Peak	Size [bp]	Conc. [pg/μl]	Molarity [pmol/l]	Observations
1	35	125.00	5,411.3	Lower Marker
2	41	103.63	3,826.7	
3	48	13.83	433.6	
4	218	16.89	117.3	
5	326	1,208.14	5,619.8	
6	330	250.19	1,149.0	
7	342	162.88	721.8	
8	349	1,531.51	6,646.5	
9	499	161.84	491.7	
10	547	46.61	129.0	
11	582	36.05	93.8	
12	673	34.70	78.1	
13	782	25.64	49.7	
14	823	22.47	41.4	
15	959	20.85	32.9	
16	1,143	16.86	22.3	
17	1,889	16.13	12.9	
18	2,134	15.04	10.7	
19	2,426	27.62	17.3	
20	2,775	14.42	7.9	
21	3,316	13.97	6.4	
22	3,904	22.96	8.9	
23	4,787	11.16	3.5	
24	5,449	15.54	4.3	
25	6,847	10.06	2.2	
26	7,498	17.60	3.6	



Assay Class: High Sensitivity DNA Assay  
 Data Path: C:\...nts and Settings\Bioanalyzer\2012-08-07\2012-08-07\_002A.xad

Created: 8/7/2012 10:55:07 AM  
 Modified: 8/7/2012 11:33:46 AM

### Electropherogram Summary Continued ...

#### ... Peak table for sample 9 : lib EM-PL-1 gel-free

Peak	Size [bp]	Conc. [pg/μl]	Molarity [pmol/l]	Observations
27	10,380	75.00	10.9	Upper Marker
28	13,110	0.00	0.0	
29	14,273	0.00	0.0	
30	17,155	0.00	0.0	
31	18,571	0.00	0.0	
32	19,431	0.00	0.0	
33	21,757	0.00	0.0	

#### Region table for sample 9 : lib EM-PL-1 gel-free

From [bp]	To [bp]	Average Size [bp]	Molarity [pmol/l]	Conc. [pg/μl]	Corr. Area	% of Total	Size distribution in CV [%]	Color
200	1,000	408	15,498.9	3,697.70	3,411.2	85	34.4	

Assay Class: High Sensitivity DNA Assay  
Data Path: C:\...nts and Settings\Bioanalyzer\2012-08-07\2012-08-07\_002A.xad

Created: 8/7/2012 10:55:07 AM  
Modified: 8/7/2012 11:33:46 AM

**Gel Image**

