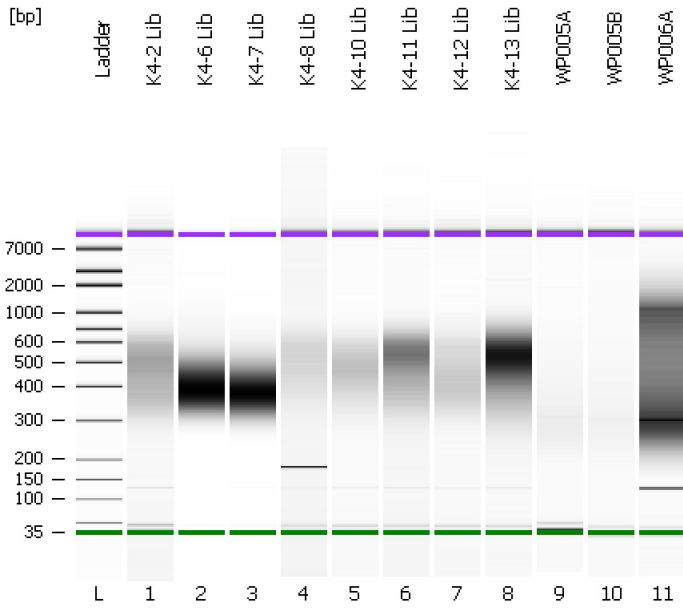


Assay Class: High Sensitivity DNA Assay
Data Path: C:\...ents and Settings\Bioanalyzer\2012-08-07\2012-08-07_003.xad

Created: 8/7/2012 11:57:26 AM
Modified: 8/7/2012 12:39:36 PM

Electrophoresis File Run Summary



Instrument Information:

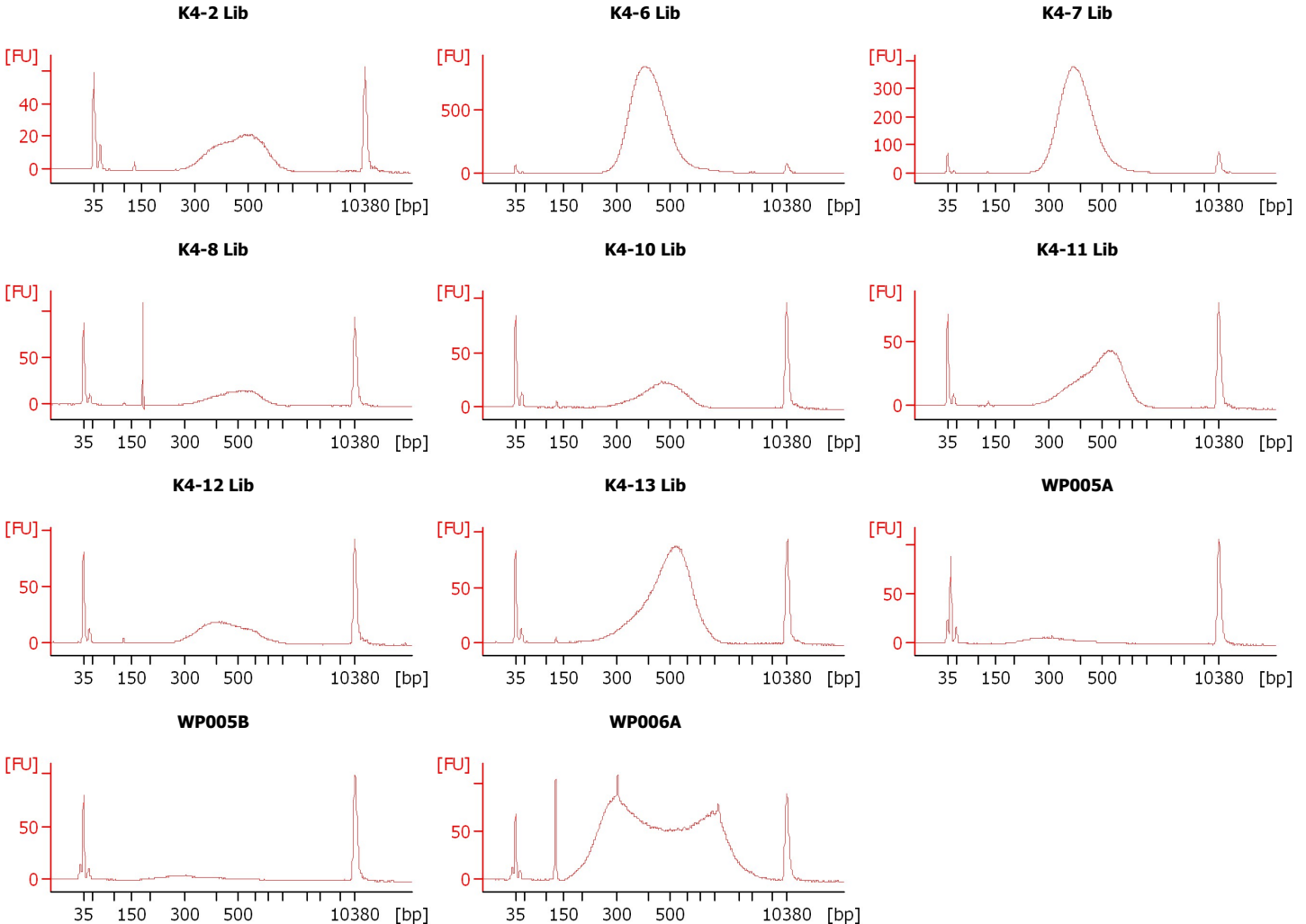
Instrument Name: DE13701086 Firmware: C.01.069
Serial#: DE13701086 Type: G2938B

Assay Information:

Assay Origin Path: C:\Program Files\Agilent\2100 bioanalyzer\2100 expert\assays\dsDNA\High Sensitivity DNA.xsy
Assay Class: High Sensitivity DNA Assay
Version: 1.03
Assay Comments: Copyright © 2003-2010 Agilent Technologies

Chip Information:

Chip Lot #:
Reagent Kit Lot #:
Chip Comments:



Assay Class: High Sensitivity DNA Assay
 Data Path: C:\...ents and Settings\Bioanalyzer\2012-08-07\2012-08-07_003.xad

Created: 8/7/2012 11:57:26 AM
 Modified: 8/7/2012 12:39:36 PM

Electrophoresis File Run Summary (Chip Summary)

Sample Name	Sample Comment	Rest. Digest	Status	Observation	Result Label	Result Color
K4-2 Lib		<input type="checkbox"/>	✓			
K4-6 Lib		<input type="checkbox"/>	✓			
K4-7 Lib		<input type="checkbox"/>	✓			
K4-8 Lib		<input type="checkbox"/>	✓			
K4-10 Lib		<input type="checkbox"/>	✓			
K4-11 Lib		<input type="checkbox"/>	✓			
K4-12 Lib		<input type="checkbox"/>	✓			
K4-13 Lib		<input type="checkbox"/>	✓			
WP005A		<input type="checkbox"/>	✓			
WP005B		<input type="checkbox"/>	✓			
WP006A		<input type="checkbox"/>	✓			
Ladder		<input type="checkbox"/>	✓			

Chip Lot #

Reagent Kit Lot #

Chip Comments :

Assay Class: High Sensitivity DNA Assay
Data Path: C:\...ents and Settings\Bioanalyzer\2012-08-07\2012-08-07_003.xad

Created: 8/7/2012 11:57:26 AM
Modified: 8/7/2012 12:39:36 PM

Electrophoresis Assay Details

General Analysis Settings

Number of Available Sample and Ladder Wells (Max.) : 12
Minimum Visible Range [s] : 32
Maximum Visible Range [s] : 138
Start Analysis Time Range [s] : 33
End Analysis Time Range [s] : 137.5
Ladder Concentration [pg/ μ l] : 1950
Uses Standard Area for Ladder Fragments
Lower Marker Concentration [pg/ μ l] : 125
Upper Marker Concentration [pg/ μ l] : 75
Used Upper Marker for Quantitation
Standard Curve Fit is Point to Point
Show Data Aligned to Lower and Upper Marker

Integrator Settings

Integration Start Time [s] : 33.05
Integration End Time [s] : 137
Slope Threshold : 0.8
Height Threshold [FU] : 5
Area Threshold : 0.1
Width Threshold [s] : 0.6
Baseline Plateau [s] : 0.5

Filter Settings

Filter Width [s] : 0.5
Polynomial Order : 4

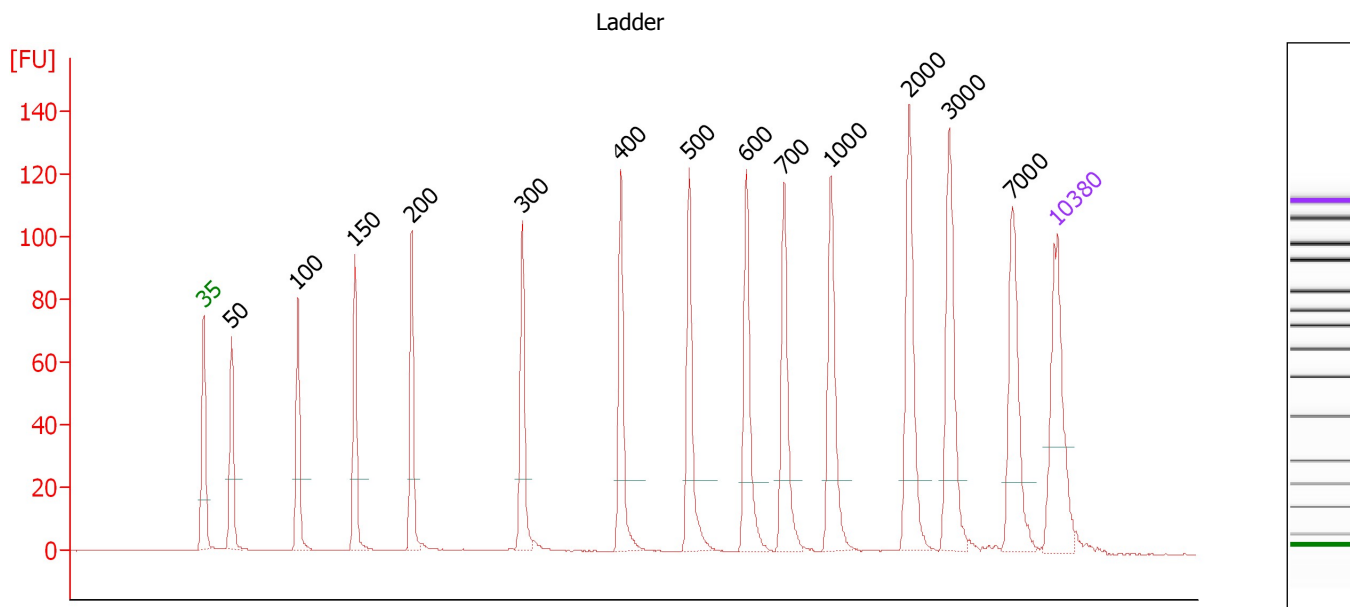
Ladder

Ladder Peak	Size	Area
1	35	160
2	50	210
3	100	208
4	150	221
5	200	242
6	300	270
7	400	305
8	500	306
9	600	336
10	700	321
11	1000	366
12	2000	413
13	3000	411
14	7000	400
15	10380	214

Assay Class: High Sensitivity DNA Assay
 Data Path: C:\...ents and Settings\Bioanalyzer\2012-08-07\2012-08-07_003.xad

Created: 8/7/2012 11:57:26 AM
 Modified: 8/7/2012 12:39:36 PM

Electropherogram Summary



Overall Results for Ladder

Noise: 0.1

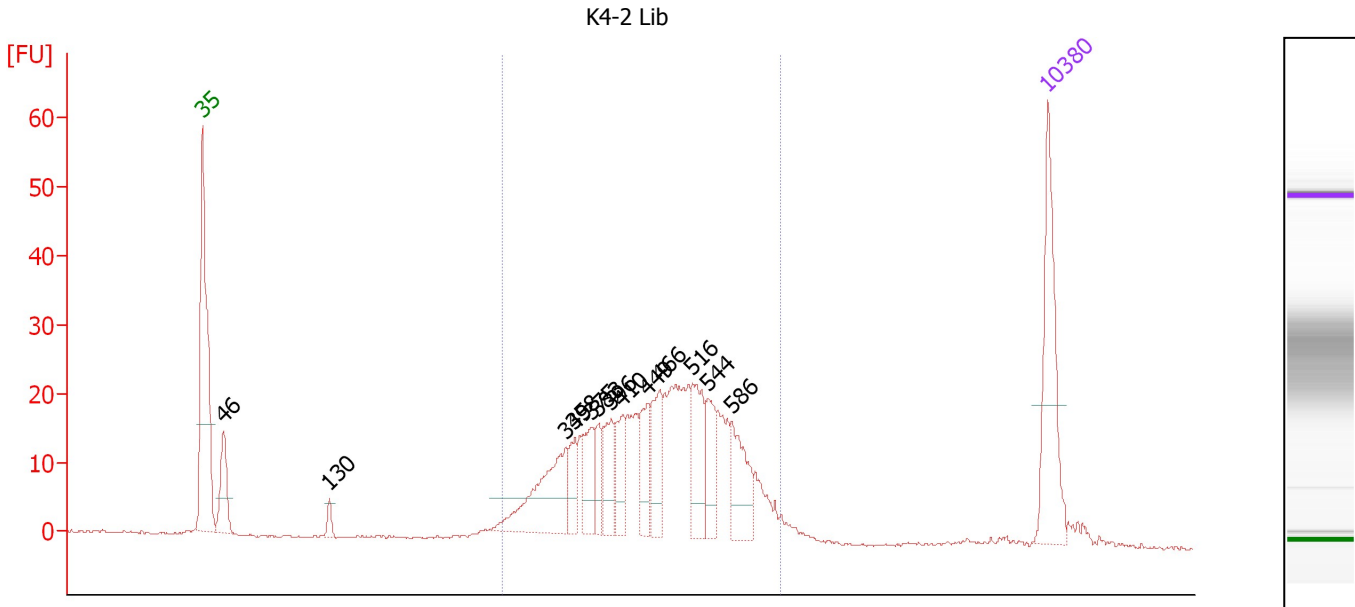
Peak table for Ladder

Peak	Size [bp]	Conc. [pg/μl]	Molarity [pmol/l]	Observations
1	35	125.00	5,411.3	Lower Marker
2	50	150.00	4,545.5	Ladder Peak
3	100	150.00	2,272.7	Ladder Peak
4	150	150.00	1,515.2	Ladder Peak
5	200	150.00	1,136.4	Ladder Peak
6	300	150.00	757.6	Ladder Peak
7	400	150.00	568.2	Ladder Peak
8	500	150.00	454.5	Ladder Peak
9	600	150.00	378.8	Ladder Peak
10	700	150.00	324.7	Ladder Peak
11	1,000	150.00	227.3	Ladder Peak
12	2,000	150.00	113.6	Ladder Peak
13	3,000	150.00	75.8	Ladder Peak
14	7,000	150.00	32.5	Ladder Peak
15	10,380	75.00	10.9	Upper Marker

Assay Class: High Sensitivity DNA Assay
 Data Path: C:\...ents and Settings\Bioanalyzer\2012-08-07\2012-08-07_003.xad

Created: 8/7/2012 11:57:26 AM
 Modified: 8/7/2012 12:39:36 PM

Electropherogram Summary Continued ...



Overall Results for sample 1 : K4-2 Lib

Number of peaks found: 13 Corr. Area 1: 442.6
 Noise: 0.2

Peak table for sample 1 : K4-2 Lib

Peak	Size [bp]	Conc. [pg/μl]	Molarity [pmol/l]	Observations
1	35	125.00	5,411.3	Lower Marker
2	46	56.74	1,854.6	
3	130	9.96	116.1	
4	349	94.87	412.0	
5	358	25.63	108.4	
6	375	36.27	146.5	
7	383	22.07	87.4	
8	396	37.43	143.3	
9	410	31.50	116.3	
10	449	37.29	125.9	
11	466	46.20	150.2	
12	516	52.55	154.2	
13	544	37.37	104.0	
14	586	49.16	127.2	
15	10,380	75.00	10.9	Upper Marker

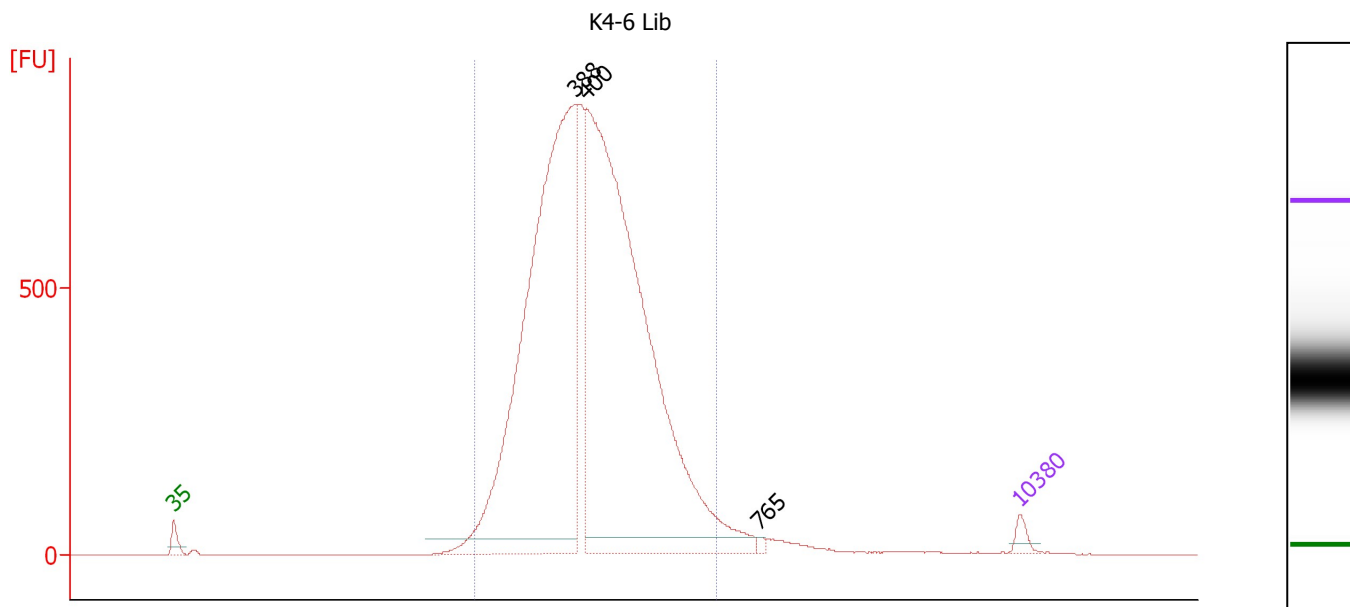
Region table for sample 1 : K4-2 Lib

From [bp]	To [bp]	Average Size [bp]	Molarity [pmol/l]	Conc. [pg/μl]	Corr. Area	% of Total	Size distribution in CV [%]	Color
285	722	465	2,674.0	772.46	442.6	87	20.4	Blue

Assay Class: High Sensitivity DNA Assay
 Data Path: C:\...ents and Settings\Bioanalyzer\2012-08-07\2012-08-07_003.xad

Created: 8/7/2012 11:57:26 AM
 Modified: 8/7/2012 12:39:36 PM

Electropherogram Summary Continued ...



Setpoint Deviations for sample 2 : K4-6 Lib

Height Threshold [FU] : 30

Overall Results for sample 2 : K4-6 Lib

Number of peaks found: 3 Corr. Area 1: 12,290.0
 Noise: 0.1

Peak table for sample 2 : K4-6 Lib

Peak	Size [bp]	Conc. [pg/μl]	Molarity [pmol/l]	Observations
1	35	125.00	5,411.3	Lower Marker
2	388	8,269.75	32,294.5	
3	400	9,595.20	36,360.4	
4	765	34.58	68.5	
5	10,380	75.00	10.9	Upper Marker

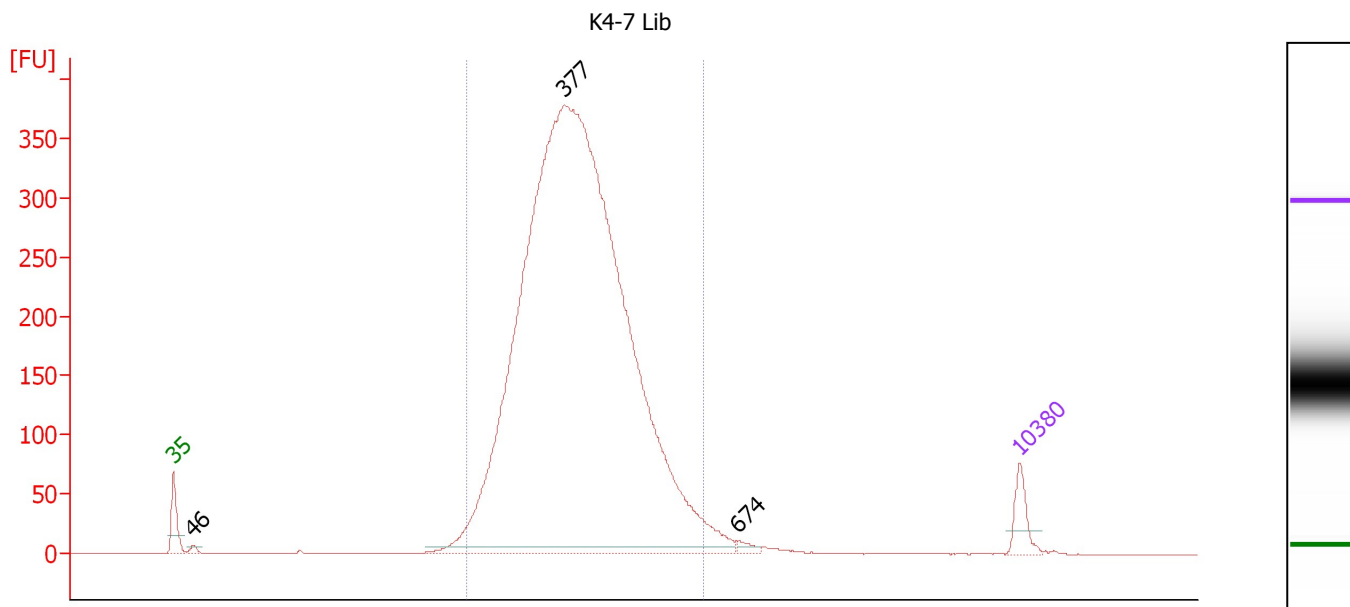
Region table for sample 2 : K4-6 Lib

From [bp]	To [bp]	Average Size [bp]	Molarity [pmol/l]	Conc. [pg/μl]	Corr. Area	% of Total	Size distribution in CV [%]	Color
287	613	412	70,550.2	18,629.95	12,290.0	96	15.5	Blue

Assay Class: High Sensitivity DNA Assay
 Data Path: C:\...ents and Settings\Bioanalyzer\2012-08-07\2012-08-07_003.xad

Created: 8/7/2012 11:57:26 AM
 Modified: 8/7/2012 12:39:36 PM

Electropherogram Summary Continued ...



Overall Results for sample 3 : K4-7 Lib

Number of peaks found: 3 Corr. Area 1: 5,166.5
 Noise: 0.2

Peak table for sample 3 : K4-7 Lib

Peak	Size [bp]	Conc. [pg/μl]	Molarity [pmol/l]	Observations
1	35	125.00	5,411.3	Lower Marker
2	46	22.30	733.7	
3	377	7,491.39	30,113.6	
4	674	23.65	53.1	
5	10,380	75.00	10.9	Upper Marker

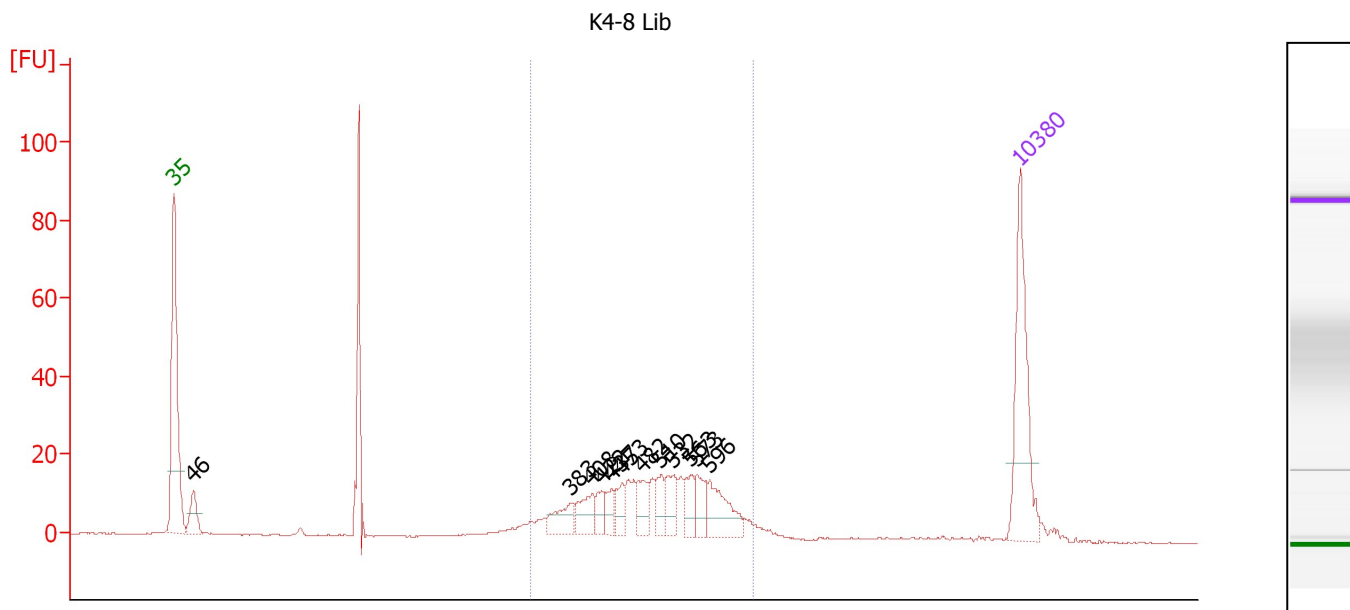
Region table for sample 3 : K4-7 Lib

From [bp]	To [bp]	Average Size [bp]	Molarity [pmol/l]	Conc. [pg/μl]	Corr. Area	% of Total	Size distribution in CV [%]	Color
280	584	396	28,755.2	7,326.27	5,166.5	96	14.9	Blue

Assay Class: High Sensitivity DNA Assay
 Data Path: C:\...ents and Settings\Bioanalyzer\2012-08-07\2012-08-07_003.xad

Created: 8/7/2012 11:57:26 AM
 Modified: 8/7/2012 12:39:36 PM

Electropherogram Summary Continued ...



Overall Results for sample 4 : K4-8 Lib

Number of peaks found: 12 Corr. Area 1: 261.9
 Noise: 0.2

Peak table for sample 4 : K4-8 Lib

Peak	Size [bp]	Conc. [pg/μl]	Molarity [pmol/l]	Observations
1	35	125.00	5,411.3	Lower Marker
2	46	28.77	947.8	
3	383	22.79	90.1	
4	408	22.47	83.4	
5	422	13.32	47.8	
6	437	13.73	47.6	
7	453	14.14	47.3	
8	482	19.38	60.9	
9	510	15.22	45.2	
10	532	21.11	60.1	
11	563	18.19	48.9	
12	573	18.52	48.9	
13	596	37.02	94.2	
14	10,380	75.00	10.9	Upper Marker

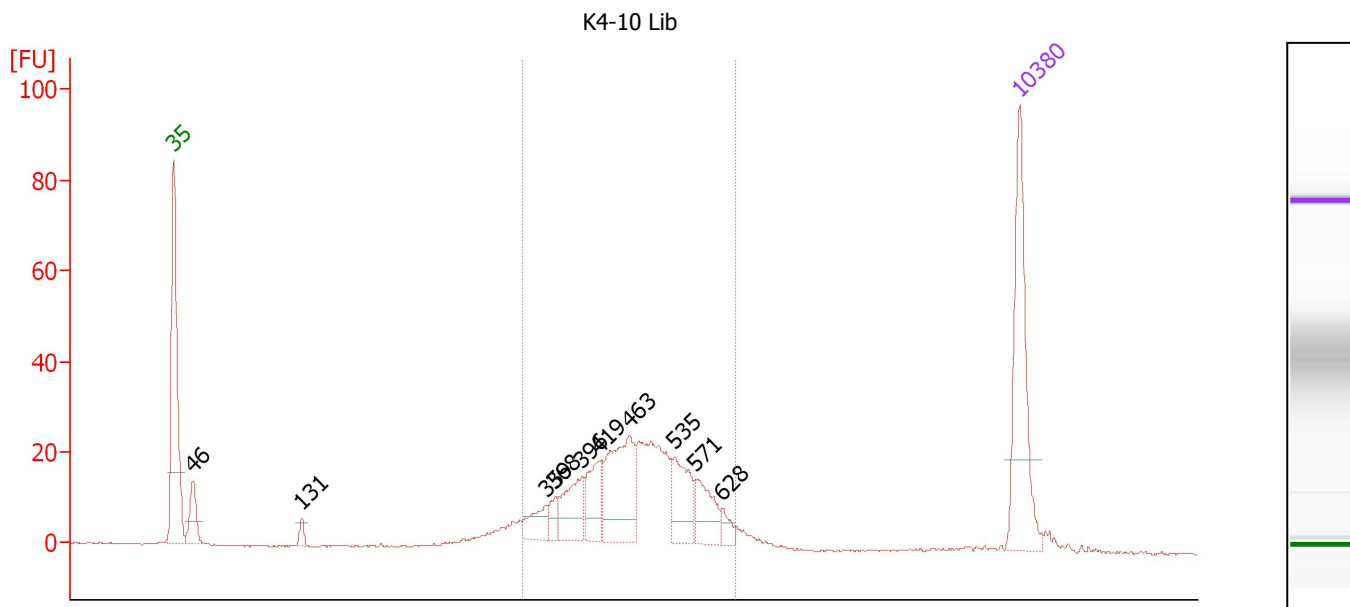
Region table for sample 4 : K4-8 Lib

From [bp]	To [bp]	Average Size [bp]	Molarity [pmol/l]	Conc. [pg/μl]	Corr. Area	% of Total	Size distribution in CV [%]	Color
342	732	501	955.6	302.86	261.9	68	17.6	Blue

Assay Class: High Sensitivity DNA Assay
 Data Path: C:\...ents and Settings\Bioanalyzer\2012-08-07\2012-08-07_003.xad

Created: 8/7/2012 11:57:26 AM
 Modified: 8/7/2012 12:39:36 PM

Electropherogram Summary Continued ...



Overall Results for sample 5 : K4-10 Lib

Number of peaks found: 10 Corr. Area 1: 352.7
 Noise: 0.2

Peak table for sample 5 : K4-10 Lib

Peak	Size [bp]	Conc. [pg/μl]	Molarity [pmol/l]	Observations
1	35	125.00	5,411.3	Lower Marker
2	46	32.74	1,090.0	
3	131	7.42	86.0	
4	359	19.54	82.5	
5	368	11.17	46.0	
6	396	37.05	141.9	
7	419	32.69	118.3	
8	463	78.47	256.7	
9	535	41.82	118.5	
10	571	29.90	79.3	
11	628	8.27	19.9	
12	10,380	75.00	10.9	Upper Marker

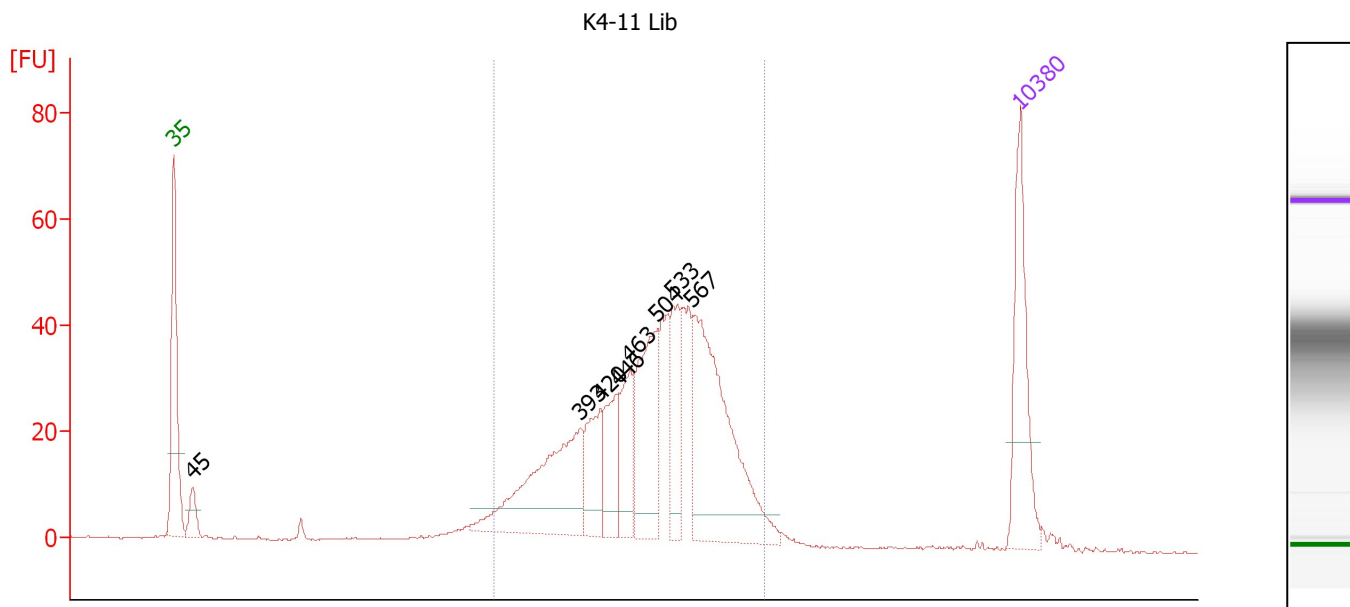
Region table for sample 5 : K4-10 Lib

From [bp]	To [bp]	Average Size [bp]	Molarity [pmol/l]	Conc. [pg/μl]	Corr. Area	% of Total	Size distribution in CV [%]	Color
335	666	474	1,280.8	386.73	352.7	81	16.2	Blue

Assay Class: High Sensitivity DNA Assay
 Data Path: C:\...ents and Settings\Bioanalyzer\2012-08-07\2012-08-07_003.xad

Created: 8/7/2012 11:57:26 AM
 Modified: 8/7/2012 12:39:36 PM

Electropherogram Summary Continued ...



Overall Results for sample 6 : K4-11 Lib

Number of peaks found: 8 Corr. Area 1: 704.6
 Noise: 0.2

Peak table for sample 6 : K4-11 Lib

Peak	Size [bp]	Conc. [pg/μl]	Molarity [pmol/l]	Observations
1	35	125.00	5,411.3	Lower Marker
2	45	25.34	847.0	
3	393	157.67	608.3	
4	420	54.85	197.9	
5	446	52.12	177.1	
6	463	54.96	179.7	
7	504	107.56	323.5	
8	533	56.12	159.6	
9	567	209.43	559.7	
10	10,380	75.00	10.9	Upper Marker

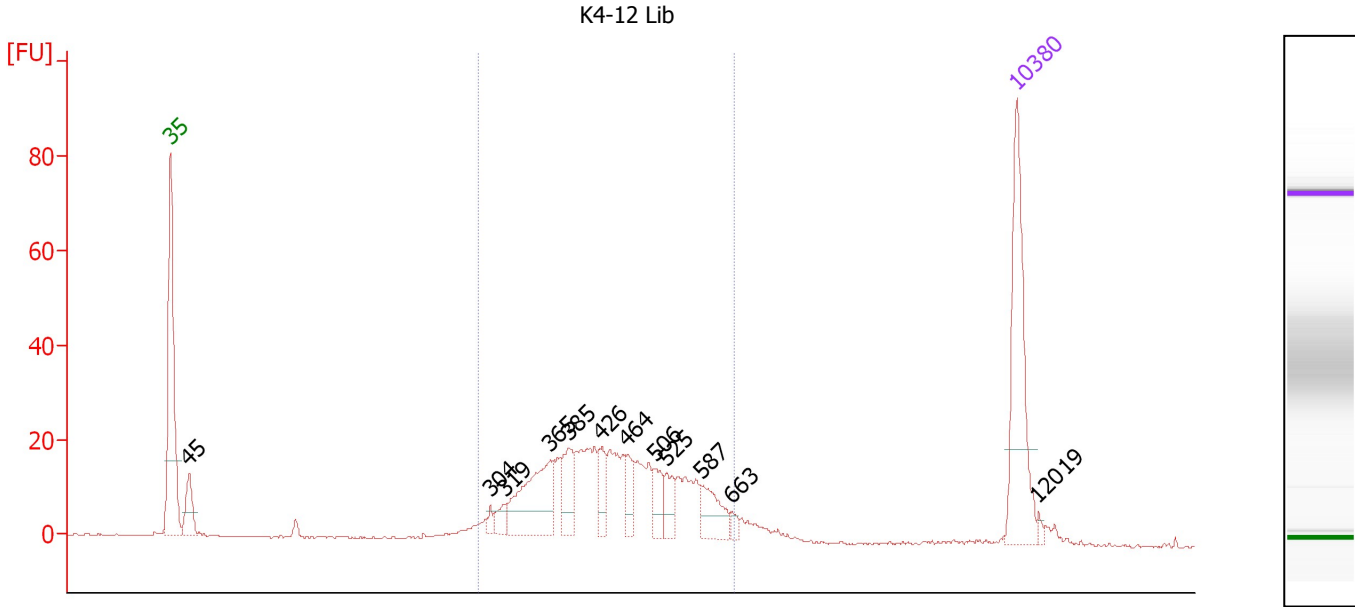
Region table for sample 6 : K4-11 Lib

From [bp]	To [bp]	Average Size [bp]	Molarity [pmol/l]	Conc. [pg/μl]	Corr. Area	% of Total	Size distribution in CV [%]	Color
306	801	500	2,795.6	871.14	704.6	89	19.8	Blue

Assay Class: High Sensitivity DNA Assay
 Data Path: C:\...ents and Settings\Bioanalyzer\2012-08-07\2012-08-07_003.xad

Created: 8/7/2012 11:57:26 AM
 Modified: 8/7/2012 12:39:36 PM

Electropherogram Summary Continued ...



Overall Results for sample 7 : K4-12 Lib

Number of peaks found: 12 Corr. Area 1: 372.3
 Noise: 0.2

Peak table for sample 7 : K4-12 Lib

Peak	Size [bp]	Conc. [pg/μl]	Molarity [pmol/l]	Observations
1	35	125.00	5,411.3	Lower Marker
2	45	31.85	1,069.5	
3	304	5.29	26.3	
4	319	9.88	47.0	
5	365	69.97	290.2	
6	385	28.22	110.9	
7	426	18.43	65.6	
8	464	16.51	53.9	
9	506	17.05	51.1	
10	525	15.40	44.4	
11	587	24.99	64.5	
12	663	4.98	11.4	
13	10,380	75.00	10.9	Upper Marker
14	12,019	0.00	0.0	

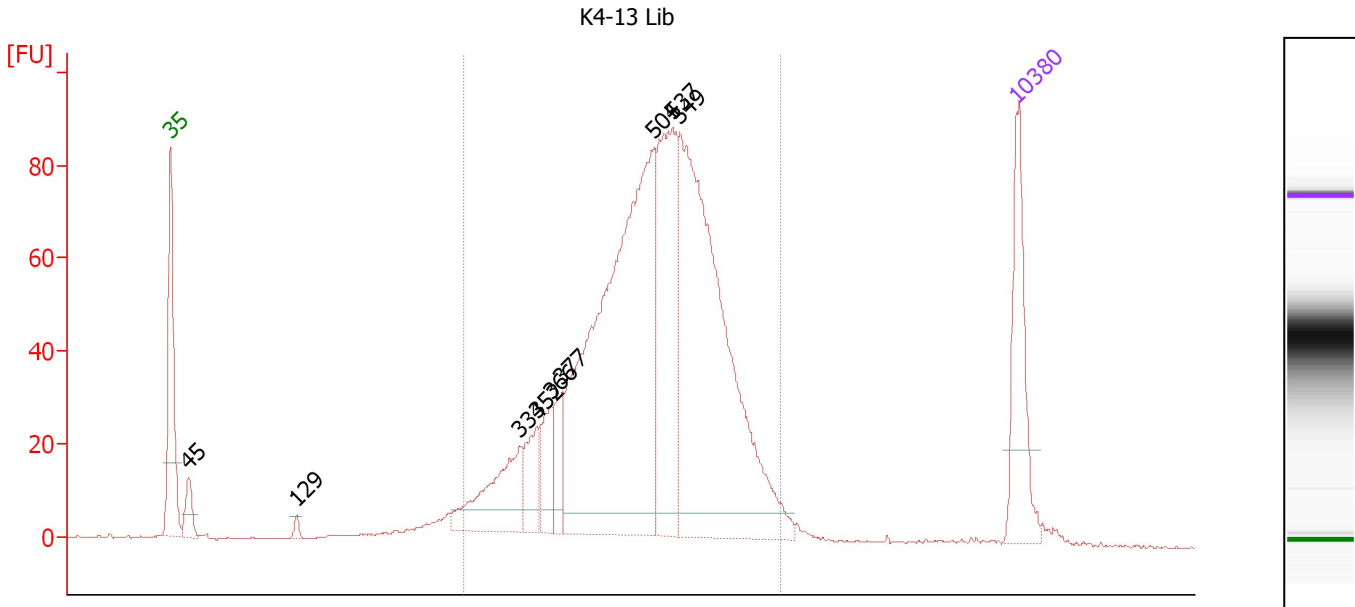
Region table for sample 7 : K4-12 Lib

From [bp]	To [bp]	Average Size [bp]	Molarity [pmol/l]	Conc. [pg/μl]	Corr. Area	% of Total	Size distribution in CV [%]	Color
292	671	447	1,516.2	424.36	372.3	83	19.9	Blue

Assay Class: High Sensitivity DNA Assay
 Data Path: C:\...ents and Settings\Bioanalyzer\2012-08-07\2012-08-07_003.xad

Created: 8/7/2012 11:57:26 AM
 Modified: 8/7/2012 12:39:36 PM

Electropherogram Summary Continued ...



Overall Results for sample 8 : K4-13 Lib

Number of peaks found: 9 Corr. Area 1: 1,412.4
 Noise: 0.2

Peak table for sample 8 : K4-13 Lib

Peak	Size [bp]	Conc. [pg/μl]	Molarity [pmol/l]	Observations
1	35	125.00	5,411.3	Lower Marker
2	45	31.16	1,052.7	
3	129	6.51	76.5	
4	334	98.73	447.5	
5	352	42.11	181.5	
6	366	40.70	168.3	
7	377	36.56	146.8	
8	504	560.52	1,684.9	
9	537	191.58	540.8	
10	549	470.88	1,298.6	
11	10,380	75.00	10.9	Upper Marker

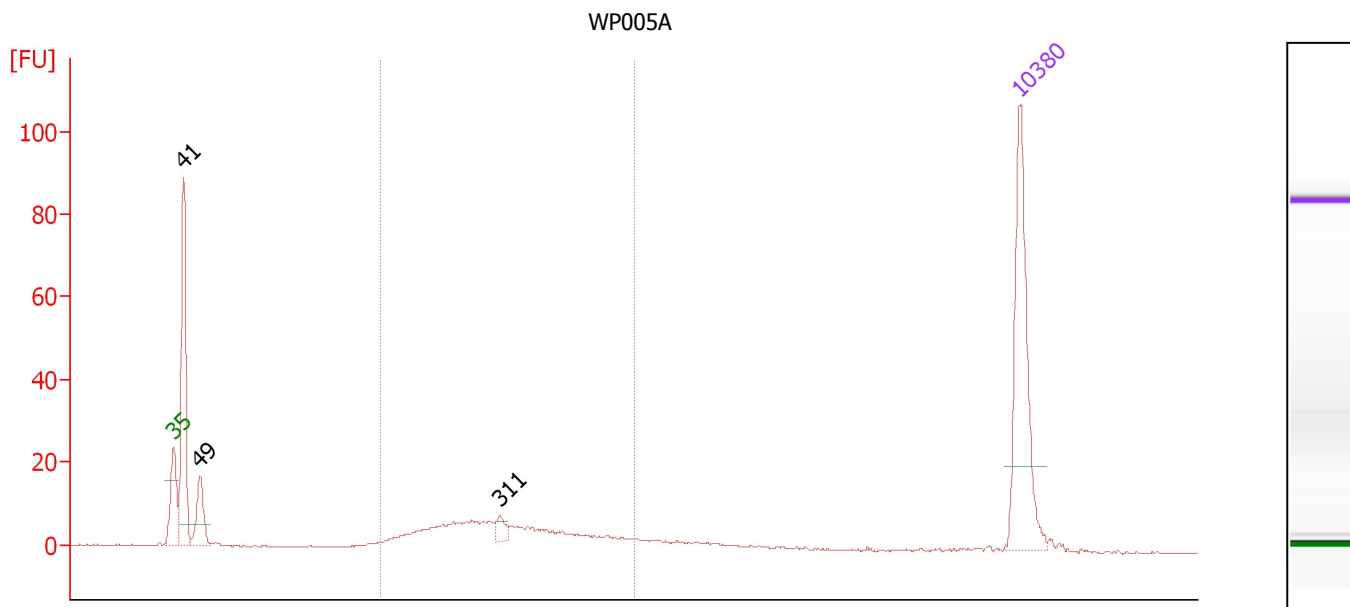
Region table for sample 8 : K4-13 Lib

From [bp]	To [bp]	Average Size [bp]	Molarity [pmol/l]	Conc. [pg/μl]	Corr. Area	% of Total	Size distribution in CV [%]	Color
279	919	505	4,838.1	1,503.82	1,412.4	93	22.0	Blue

Assay Class: High Sensitivity DNA Assay
 Data Path: C:\...ents and Settings\Bioanalyzer\2012-08-07\2012-08-07_003.xad

Created: 8/7/2012 11:57:26 AM
 Modified: 8/7/2012 12:39:36 PM

Electropherogram Summary Continued ...



Overall Results for sample 9 : WP005A

Number of peaks found: 3 Corr. Area 1: 134.2
 Noise: 0.2

Peak table for sample 9 : WP005A

Peak	Size [bp]	Conc. [pg/μl]	Molarity [pmol/l]	Observations
1	35	125.00	5,411.3	Lower Marker
2	41	134.47	5,023.5	
3	49	35.51	1,089.4	
4	311	8.65	42.2	
5	10,380	75.00	10.9	Upper Marker

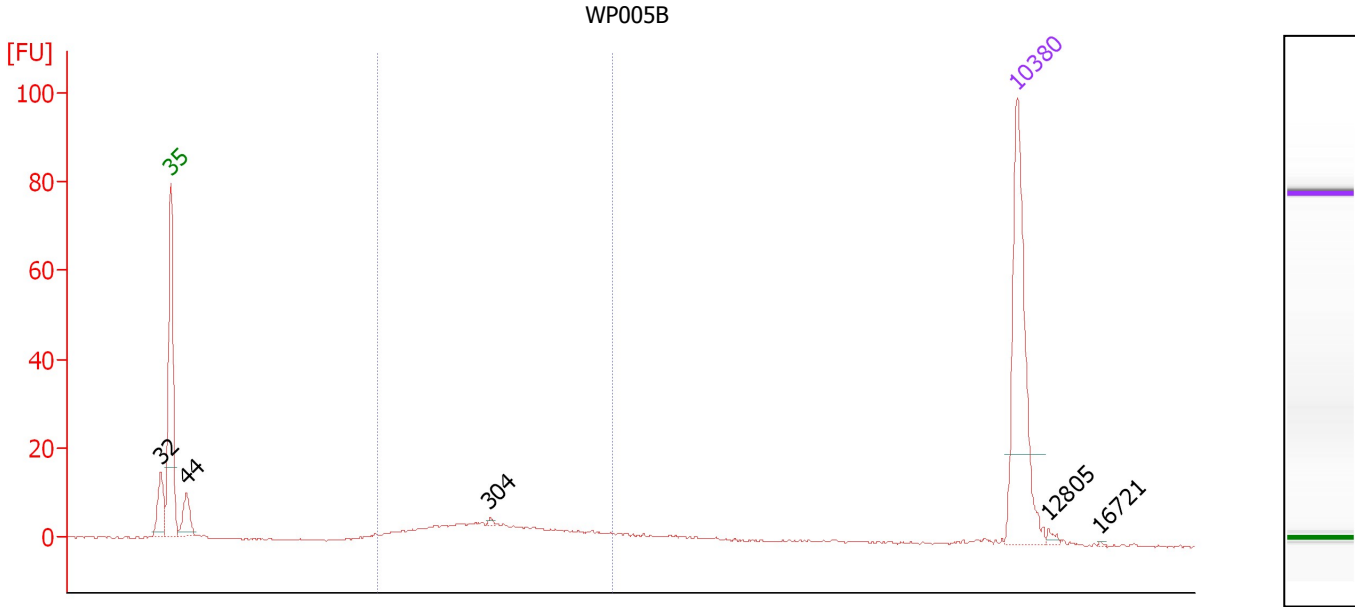
Region table for sample 9 : WP005A

From [bp]	To [bp]	Average Size [bp]	Molarity [pmol/l]	Conc. [pg/μl]	Corr. Area	% of Total	Size distribution in CV [%]	Color
200	470	316	711.9	140.81	134.2	45	20.4	Blue

Assay Class: High Sensitivity DNA Assay
 Data Path: C:\...ents and Settings\Bioanalyzer\2012-08-07\2012-08-07_003.xad

Created: 8/7/2012 11:57:26 AM
 Modified: 8/7/2012 12:39:36 PM

Electropherogram Summary Continued ...



Setpoint Deviations for sample 10 : WP005B

Height Threshold [FU] : 1

Overall Results for sample 10 : WP005B

Number of peaks found: 5 Corr. Area 1: 78.8
 Noise: 0.1

Peak table for sample 10 : WP005B

Peak	Size [bp]	Conc. [pg/μl]	Molarity [pmol/l]	Observations
1	32	0.00	0.0	
2	35	125.00	5,411.3	Lower Marker
3	44	22.43	777.8	
4	304	1.36	6.8	
5	10,380	75.00	10.9	Upper Marker
6	12,805	0.00	0.0	
7	16,721	0.00	0.0	

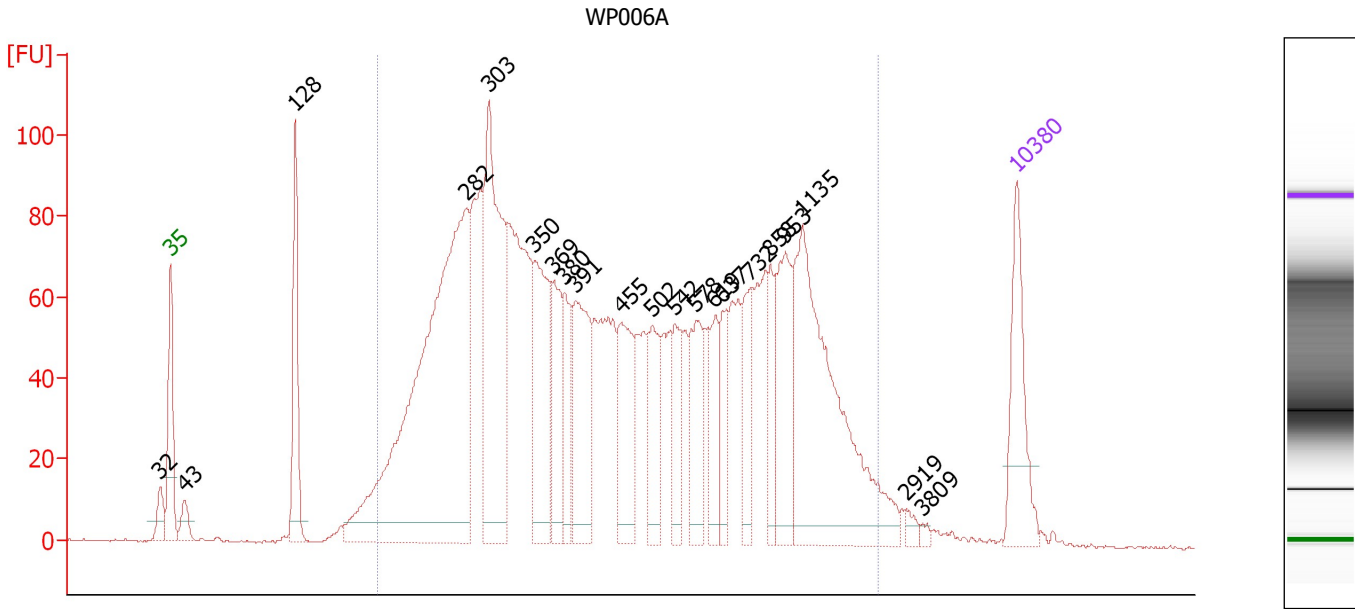
Region table for sample 10 : WP005B

From [bp]	To [bp]	Average Size [bp]	Molarity [pmol/l]	Conc. [pg/μl]	Corr. Area	% of Total	Size distribution in CV [%]	Color
200	441	310	453.0	88.56	78.8	51	19.1	Blue

Assay Class: High Sensitivity DNA Assay
 Data Path: C:\...ents and Settings\Bioanalyzer\2012-08-07\2012-08-07_003.xad

Created: 8/7/2012 11:57:26 AM
 Modified: 8/7/2012 12:39:36 PM

Electropherogram Summary Continued ...



Overall Results for sample 11 : WP006A

Number of peaks found: 21 Corr. Area 1: 2,999.6
 Noise: 0.2

Peak table for sample 11 : WP006A

Peak	Size [bp]	Conc. [pg/μl]	Molarity [pmol/l]	Observations
1	32	0.00	0.0	
2	35	125.00	5,411.3	Lower Marker
3	43	25.45	902.2	
4	128	133.20	1,576.6	
5	282	723.65	3,889.1	
6	303	299.60	1,498.0	
7	350	154.88	671.0	
8	369	86.55	355.1	
9	380	67.00	267.1	
10	391	133.98	518.7	
11	455	101.48	337.6	
12	502	72.51	218.9	
13	542	56.16	157.0	
14	578	75.90	199.1	
15	619	53.10	130.0	
16	637	42.45	101.0	
17	732	59.37	122.8	
18	858	46.04	81.3	
19	953	96.98	154.2	
20	1,135	295.70	394.8	
21	2,919	6.59	3.4	
22	3,809	3.52	1.4	
23	10,380	75.00	10.9	Upper Marker

Assay Class: High Sensitivity DNA Assay
Data Path: C:\...ents and Settings\Bioanalyzer\2012-08-07\2012-08-07_003.xad

Created: 8/7/2012 11:57:26 AM
Modified: 8/7/2012 12:39:36 PM

Electropherogram Summary Continued ...

... Region table for sample 11 : WP006A

From [bp]	To [bp]	Average Size [bp]	Molarity [pmol/l]	Conc. [pg/μl]	Corr. Area	% of Total	Size distribution in CV [%]	Color
200	2,186	576	12,846.8	3,289.28	2,999.6	93	65.6	

Assay Class: High Sensitivity DNA Assay
Data Path: C:\...ents and Settings\Bioanalyzer\2012-08-07\2012-08-07_003.xad

Created: 8/7/2012 11:57:26 AM
Modified: 8/7/2012 12:39:36 PM

Gel Image

